



# Welcome to the World of Standards



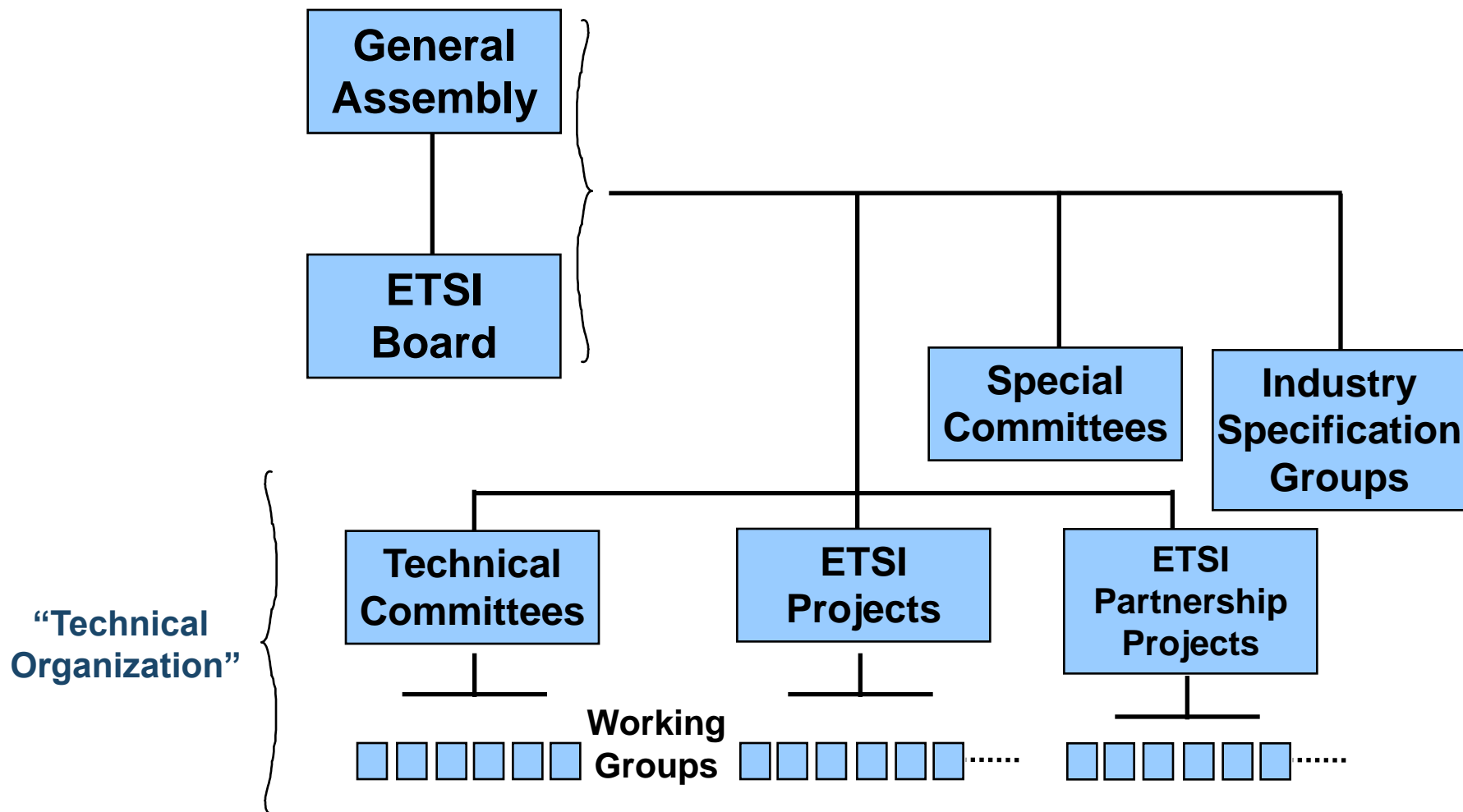
## ETSI GOVERNANCE AND DECISION MAKING

ETSI Seminar



# ETSI GOVERNANCE

# The ETSI structure



The ETSI Secretariat gives support to all the different entities in the Organization

## Tasks

- Appointments
- Rules & Regulations
- Membership
- Budget & financial matters
- Annual Report
- Final point of approval
- Appeals



## Powers and functions (1)


- Work Programme
- Application of financial resources
  - including for STFs within agreed financial framework
- Advice to GA on finance/resource issues
- Creating/closing TCs , EPs and SCs
- Appointing TC and EP Chairmen
- Standstill
- Resolving drafting problems
- Standardization policy & performance
- Communication
- ...

## Powers and functions (2)

- Resource framework for Technical Organization
- Overseeing Technical Organization
- External relations
- Technical Working Procedures (TWP)
- Disputes/appeals/complaints
  - on procedural matters
  - in Technical Organization
  - from non-members



***New Board elections  
Nov 2014  
for a 3-year period***



***Currently 29 members  
including 1 SME &  
1 User representative\****

\* RoP Annex 7: Number of Board members between 15 and 30

# Who's who in ETSI Governance



Simon Hicks, GA chairman



Luis Jorge Romero, ETSI DG



Dirk Weiler, Board chairman

- ETSI Statutes
- ETSI Rules of Procedure (RoP)
- Guidelines on Annex 2 of RoP (financial contributions)
- ETSI Guide on Intellectual Property Rights
- ETSI Guidelines for Antitrust Compliance
- ETSI Board Working Procedures
- Powers and Functions of the Board
- ETSI Financial Regulations
- Terms of Reference of the Operational Co-ordination Group (OCG)
- Guidelines about former elected officials & former ETSI staff
- ETSI Technical Working Procedures (TWP)
- ETSI Drafting Rules


<http://portal.etsi.org/Directives/home.asp>





# DECISION MAKING

- Voting in a TB
- Approval of ETSI Standards and ETSI Guides
- Election of officials to General Assembly
- Election of Board members and Board Chairman
- Selection of Director-General
- Matters relating to European Union (Full Members only)

-  Vote weighted in accordance to member's Units of Contribution
  - Effectively, according to membership fee

# Membership contributions

## - other than Administrations



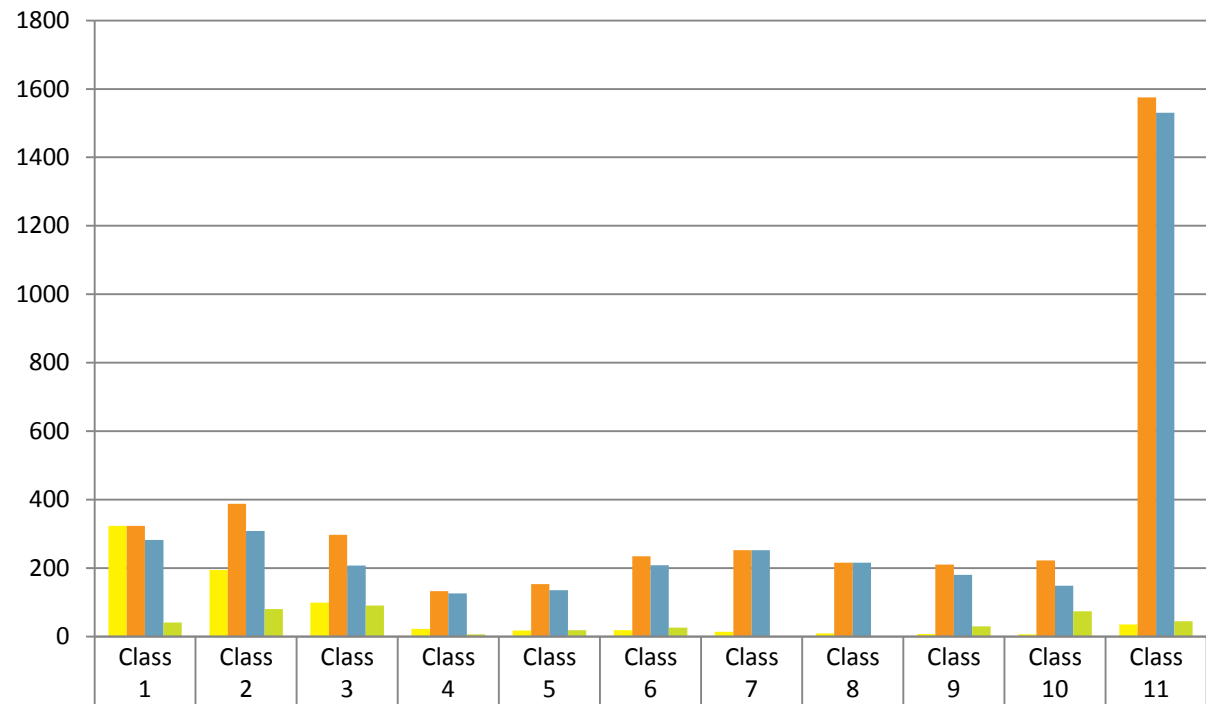
ECRT in 10 <sup>6</sup> euro	Number of Units	Fees
SME, User, “Additional membership”	1	2k/3k/6k
up to 135	2	9 380
136 to 200	3	12 760
201 to 450	6	22 900
451 to 700	9	33 040
701 to 1350	13	46 560
1351 to 2000	18	63 460
2001 to 3500	24	83 740
3501 to 5000	30	104 020
5001 to 8000	37	127 680
above 8000	45	154 720

*ECRT: Global electronics communications-related turnover*

# Membership voting weights by membership class



(Class 1 to 11 – see <http://www.etsi.org/membership/fees>)



	Class 1	Class 2	Class 3	Class 4	Class 5	Class 6	Class 7	Class 8	Class 9	Class 10	Class 11
■ Number of Members	323	194	99	22	17	18	14	9	7	6	35
■ All Members' voting weights	323	388	297	132	153	234	252	216	210	222	1575
■ Full Members' voting weights	282	308	207	126	135	208	252	216	180	148	1530
■ Associate Members' voting weights	41	80	90	6	18	26	0	0	30	74	45

(GA#64 November 2014)

- Success = 71% of votes cast are in favour
- In General Assembly:
  - proxy voting permitted
  - quorum of 50% of weighted votes
- Otherwise:
  - no quorum specified
- Vote splitting
  - in general, vote splitting is not permitted
    - because each Member has only one vote, which is weighted
    - the only exception is for the election of Board members
      - Each ETSI Member (Full, Assoc) may use as many votes as its individual weight
      - And may split those votes on as many candidates as it has votes (see Annex 7 of the Rules of Procedure)

- Approval of EN
- Changes to Statutes and Rules
- Establishment of national weightings
  
- Not available to countries of Associate Members
- Only available to countries having a Member in the Administration, Other Governmental Bodies, or National Standards Organizations category which contributes to ETSI according to the country's Gross Domestic Product (GDP)

- Head of National Delegation votes
  - taking account of views of national members
- Weighting determined when nation joins ETSI
- Quorum of 50% of weighted votes
- Proxy voting permitted
- Success = 71% of weighted votes in favour



# National weightings *(March 2014)*



<b>GERMANY</b>	<b>29</b>
<b>UNITED KINGDOM</b>	<b>29</b>
<b>FRANCE</b>	<b>29</b>
<b>ITALY</b>	<b>29</b>
<b>SPAIN</b>	<b>27</b>
<b>POLAND</b>	<b>27</b>
<b>ROMANIA</b>	<b>14</b>
<b>NETHERLANDS</b>	<b>13</b>
<b>RUSSIA</b>	<b>12</b>
<b>TURKEY</b>	<b>12</b>
<b>GREECE</b>	<b>12</b>
<b>PORTUGAL</b>	<b>12</b>
<b>BELGIUM</b>	<b>12</b>
<b>CZECH REPUBLIC</b>	<b>12</b>
<b>HUNGARY</b>	<b>12</b>
<b>UKRAINE</b>	<b>10</b>
<b>SWEDEN</b>	<b>10</b>
<b>AUSTRIA</b>	<b>10</b>
<b>BULGARIA</b>	<b>10</b>
<b>SWITZERLAND</b>	<b>10</b>

<b>SLOVAK REPUBLIC</b>	<b>7</b>
<b>DENMARK</b>	<b>7</b>
<b>FINLAND</b>	<b>7</b>
<b>NORWAY</b>	<b>7</b>
<b>IRELAND</b>	<b>7</b>
<b>SERBIA</b>	<b>7</b>
<b>CROATIA</b>	<b>7</b>
<b>LITHUANIA</b>	<b>7</b>
<b>ALBANIA</b>	<b>4</b>
<b>LATVIA</b>	<b>4</b>
<b>SLOVENIA</b>	<b>4</b>
<b>GEORGIA</b>	<b>4</b>
<b>ESTONIA</b>	<b>4</b>
<b>CYPRUS</b>	<b>4</b>
<b>LUXEMBOURG</b>	<b>4</b>
<b>MALTA</b>	<b>3</b>
<b>ICELAND</b>	<b>3</b>
<b>BOSNIA &amp; HERZEGOVINA</b>	<b>3</b>
<b>FYR OF MACEDONIA</b>	<b>3</b>
<b>MOLDOVA</b>	<b>3</b>