



**LTE;
Evolved Universal Terrestrial
Radio Access Network (E-UTRAN)
and Wireless Local Area Network (WLAN);
Xw interface user plane protocol
(3GPP TS 36.465 version 14.2.0 Release 14)**



Reference

RTS/TSGR-0336465vE20

Keywords

LTE

ETSI

650 Route des Lucioles
F-06921 Sophia Antipolis Cedex - FRANCE

Tel.: +33 4 92 94 42 00 Fax: +33 4 93 65 47 16

Siret N° 348 623 562 00017 - NAF 742 C
Association à but non lucratif enregistrée à la
Sous-Préfecture de Grasse (06) N° 7803/88

Important notice

The present document can be downloaded from:

<http://www.etsi.org/standards-search>

The present document may be made available in electronic versions and/or in print. The content of any electronic and/or print versions of the present document shall not be modified without the prior written authorization of ETSI. In case of any existing or perceived difference in contents between such versions and/or in print, the only prevailing document is the print of the Portable Document Format (PDF) version kept on a specific network drive within ETSI Secretariat.

Users of the present document should be aware that the document may be subject to revision or change of status.

Information on the current status of this and other ETSI documents is available at

<https://portal.etsi.org/TB/ETSIDeliverableStatus.aspx>

If you find errors in the present document, please send your comment to one of the following services:

<https://portal.etsi.org/People/CommiteeSupportStaff.aspx>

Copyright Notification

No part may be reproduced or utilized in any form or by any means, electronic or mechanical, including photocopying and microfilm except as authorized by written permission of ETSI.

The content of the PDF version shall not be modified without the written authorization of ETSI.

The copyright and the foregoing restriction extend to reproduction in all media.

© ETSI 2018.

All rights reserved.

DECT™, **PLUGTESTS™**, **UMTS™** and the ETSI logo are trademarks of ETSI registered for the benefit of its Members.

3GPP™ and **LTE™** are trademarks of ETSI registered for the benefit of its Members and of the 3GPP Organizational Partners.

oneM2M logo is protected for the benefit of its Members.

GSM® and the GSM logo are trademarks registered and owned by the GSM Association.

Intellectual Property Rights

Essential patents

IPRs essential or potentially essential to normative deliverables may have been declared to ETSI. The information pertaining to these essential IPRs, if any, is publicly available for **ETSI members and non-members**, and can be found in ETSI SR 000 314: *"Intellectual Property Rights (IPRs); Essential, or potentially Essential, IPRs notified to ETSI in respect of ETSI standards"*, which is available from the ETSI Secretariat. Latest updates are available on the ETSI Web server (<https://ipr.etsi.org/>).

Pursuant to the ETSI IPR Policy, no investigation, including IPR searches, has been carried out by ETSI. No guarantee can be given as to the existence of other IPRs not referenced in ETSI SR 000 314 (or the updates on the ETSI Web server) which are, or may be, or may become, essential to the present document.

Trademarks

The present document may include trademarks and/or tradenames which are asserted and/or registered by their owners. ETSI claims no ownership of these except for any which are indicated as being the property of ETSI, and conveys no right to use or reproduce any trademark and/or tradename. Mention of those trademarks in the present document does not constitute an endorsement by ETSI of products, services or organizations associated with those trademarks.

Foreword

This Technical Specification (TS) has been produced by ETSI 3rd Generation Partnership Project (3GPP).

The present document may refer to technical specifications or reports using their 3GPP identities, UMTS identities or GSM identities. These should be interpreted as being references to the corresponding ETSI deliverables.

The cross reference between GSM, UMTS, 3GPP and ETSI identities can be found under <http://webapp.etsi.org/key/queryform.asp>.

Modal verbs terminology

In the present document "**shall**", "**shall not**", "**should**", "**should not**", "**may**", "**need not**", "**will**", "**will not**", "**can**" and "**cannot**" are to be interpreted as described in clause 3.2 of the [ETSI Drafting Rules](#) (Verbal forms for the expression of provisions).

"**must**" and "**must not**" are **NOT** allowed in ETSI deliverables except when used in direct citation.

Contents

Intellectual Property Rights	2
Foreword.....	2
Modal verbs terminology.....	2
Foreword.....	4
1 Scope	5
2 References	5
3 Definitions and abbreviations.....	5
3.1 Definitions	5
3.2 Abbreviations	6
4 General	6
4.1 General aspects.....	6
5 Xw user plane protocol.....	6
5.1 General	6
5.2 Xw user plane protocol layer services	6
5.3 Services expected from the Xw Transport Network Layer	7
5.4 Elementary procedures	8
5.4.1 Transfer of Downlink User Data.....	8
5.4.1.1 Successful operation.....	8
5.4.1.2 Unsuccessful operation	8
5.4.2 Downlink Data Delivery Status	8
5.4.2.1 Successful operation.....	8
5.4.2.2 Unsuccessful operation	9
5.5 Elements for the Xw user plane protocol	10
5.5.1 General.....	10
5.5.2 Frame format for the Xw user plane protocol.....	11
5.5.2.1 DL USER DATA (PDU Type 0)	11
5.5.2.2 DL DATA DELIVERY STATUS (PDU Type 1).....	12
5.5.3 Coding of information elements in frames	13
5.5.3.1 PDU Type	13
5.5.3.2 Spare	13
5.5.3.3 Xw-U Sequence Number	13
5.5.3.4 Lost Packet Report	13
5.5.3.5 Final Frame Indication	13
5.5.3.6 Highest successfully delivered Xw-U Sequence Number	13
5.5.3.7 Desired buffer size for the E-RAB or UE	14
5.5.3.8 Minimum desired buffer size for the UE.....	14
5.5.3.9 Number of lost Xw-U Sequence Number ranges reported	14
5.5.3.10 Start of lost Xw-U Sequence Number range	14
5.5.3.11 End of lost Xw-U Sequence Number range	14
5.5.3.12 Spare extension	14
5.5.4 Timers	15
Annex A (informative): Change history	16
History	17

Foreword

This Technical Specification has been produced by the 3rd Generation Partnership Project (3GPP).

The contents of the present document are subject to continuing work within the TSG and may change following formal TSG approval. Should the TSG modify the contents of the present document, it will be re-released by the TSG with an identifying change of release date and an increase in version number as follows:

Version x.y.z

where:

- x the first digit:
 - 1 presented to TSG for information;
 - 2 presented to TSG for approval;
 - 3 or greater indicates TSG approved document under change control.
- y the second digit is incremented for all changes of substance, i.e. technical enhancements, corrections, updates, etc.
- z the third digit is incremented when editorial only changes have been incorporated in the document.

1 Scope

The present document specifies the Xw user plane protocol being used over the Xw interface for LTE/WLAN Aggregation (LWA) and LTE WLAN Radio Level Integration with IPsec Tunnel (LWIP).

2 References

The following documents contain provisions which, through reference in this text, constitute provisions of the present document.

- References are either specific (identified by date of publication, edition number, version number, etc.) or non-specific.
- For a specific reference, subsequent revisions do not apply.
- For a non-specific reference, the latest version applies. In the case of a reference to a 3GPP document (including a GSM document), a non-specific reference implicitly refers to the latest version of that document *in the same Release as the present document*.

- [1] 3GPP TR 21.905: "Vocabulary for 3GPP Specifications".
 - [2] 3GPP TS 36.300: "Evolved Universal Terrestrial Radio Access (E-UTRA) and Evolved Universal Terrestrial Radio Access Network (E-UTRAN); Overall description; Stage 2".
 - [3] 3GPP TS 29.281: "General Packet Radio System (GPRS) Tunnelling Protocol User Plane (GTPv1-U)".
-

3 Definitions and abbreviations

3.1 Definitions

For the purposes of the present document, the terms and definitions given in 3GPP TR 21.905 [1] and the following apply. A term defined in the present document takes precedence over the definition of the same term, if any, in 3GPP TR 21.905 [1].

LTE-WLAN Aggregation: Defined in TS 36.300 [2].

LWA bearer: Defined in TS 36.300 [2].

LWA PDU: in LTE-WLAN Aggregation, a PDU with DRB ID generated by LWAAP entity for transmission over WLAN.

LWIP bearer: Defined in TS 36.300 [2].

LWIP option: Defined in TS 36.300 [2].

LWIP PDU: in LTE WLAN Radio Level Integration with IPsec Tunnel, a PDU generated by LWIPEP entity for transmission over WLAN

WLAN Termination: Defined in TS 36.300 [2].

Xw: logical interface between eNB and WT.

3.2 Abbreviations

For the purposes of the present document, the abbreviations given in 3GPP TR 21.905 [1] and the following apply. An abbreviation defined in the present document takes precedence over the definition of the same abbreviation, if any, in 3GPP TR 21.905 [1].

eNB	E-UTRAN Node
LWA	LTE-WLAN Aggregation
LWIP	LTE WLAN Radio Level Integration with IPsec Tunnel
WT	WLAN Termination

4 General

4.1 General aspects

The Xw user plane (Xw UP) protocol is located in the User Plane of the Radio Network layer over the Xw interface.

In LWA option, the Xw UP protocol is used to convey control information related to the user data flow management of E-RABs. The WT flow control feedback may support indication of successful transmission towards a UE, or successful delivery to the UE, as defined in TS 36.300 [2].

In LWIP option, the Xw UP protocol is used to convey control information related to the user data flow management of each UE. The WT flow control feedback may support indication of successful transmission towards a UE, as defined in TS 36.300 [2].

Each Xw UP protocol instance is associated to one E-RAB only.

This version of the present document defines the Xw UP protocol in the context of LTE-WLAN Aggregation and LWIP option, more specifically, for UE user data setup for LWIP operation or for Xw user data bearers setup for E-RABs configured with the LWA bearer option.

If configured, Xw UP protocol instances exist at the eNB and the WT between which the Xw user data bearers are setup.

In this version of the present document, Xw UP protocol data is conveyed by GTP-U protocol means, more specifically, by means of the “Xw RAN Container” GTP-U extension header as defined in TS 29.281 [3].

5 Xw user plane protocol

5.1 General

The Xw UP protocol layer is using services of the transport network layer in order to allow flow control of user data packets transferred over the Xw interface.

5.2 Xw user plane protocol layer services

For LWA option, the following functions are provided by the Xw UP protocol:

- Provision of Xw UP specific sequence number information for user data transferred from the eNB to the WT for a specific E-RAB configured with the LWA bearer option;
- Information of successful transmission towards or in sequence delivery to the UE of LWA PDUs from WT for user data associated with a specific E-RAB configured with the LWA bearer option;
- Information of LWA PDUs that were not transferred towards or not delivered to the UE;
- Information of the currently desired buffer size at the WT for transmitting to the UE user data associated with a specific E-RAB configured with the LWA bearer option;

- Information of the currently minimum desired buffer size at the WT for transmitting to the UE user data associated with all E-RABs configured with the LWA bearer option.

For LWIP option, the following functions are provided by the Xw UP protocol:

- Provision of Xw UP specific sequence number information for user data transferred from the eNB to the WT for a specific UE configured with the LWIP bearer option;
- Information of successful transmission towards the UE of LWIP PDUs from WT for user data of a UE configured with the LWIP bearer option;
- Information of LWIP PDUs that were not transferred towards the UE;
- Information of the currently desired buffer size at the WT for transmitting to the UE user data for a specific UE configured with the LWIP bearer option;
- Information of the currently minimum desired buffer size at the WT for transmitting to the UE user data for UEs configured with the LWIP bearer option.

5.3 Services expected from the Xw Transport Network Layer

The Xw user plane protocol layer expects the following services from the Transport Network Layer:

- Transfer of user data.

5.4 Elementary procedures

5.4.1 Transfer of Downlink User Data

5.4.1.1 Successful operation

The purpose of the Transfer of Downlink User Data procedure is to provide Xw-U specific sequence number information at the transfer of user data carrying a DL LWA PDU or DL LWIP PDU from the eNB to the WT via the Xw-U interface.

In LWA option, an Xw user plane instance making use of the Transfer of Downlink User Data procedure is associated to a single E-RAB only. The Transfer of Downlink User Data procedure is invoked whenever user data for that particular E-RAB needs to be sent across the Xw-U interface.

In LWIP option, an Xw user plane instance making use of the Transfer of Downlink User Data procedure is associated to a single UE only. The Transfer of Downlink User Data procedure is invoked whenever user data for that particular UE needs to be sent across the Xw-U interface.

The eNB shall assign consecutive Xw-U sequence numbers to each transferred Xw-U packet.

The WT shall detect whether an Xw-U packet was lost and memorise the respective sequence number after it has declared the respective Xw-U packet as being “lost”.

In LWA option, the WT shall transfer the remaining LWA PDUs towards the UE and memorise the highest Xw-U sequence number of the PDCP PDU that was successfully transferred towards or delivered to the UE.

NOTE: For LWA option, the Transfer of Downlink User Data procedure and the associated feedback of lost Xw-U packets assist the eNB in avoiding PDCP HFN de-synchronisation. If an E-UTRAN deployment decides to not use the Transfer of Downlink User Data procedure, PDCP HFN synchronization should be ensured by other means, e.g. UE feedback.

In LWIP option, the WT shall transfer the remaining LWIP PDUs towards the UE and memorise the highest Xw-U sequence number of the LWIP PDU that was successfully transferred towards the UE.

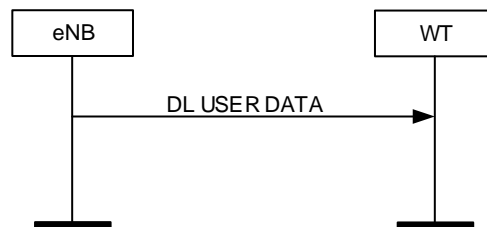


Figure 5.4.1.1-1: Successful Transfer of Downlink User Data

5.4.1.2 Unsuccessful operation

Void.

5.4.2 Downlink Data Delivery Status

5.4.2.1 Successful operation

The purpose of the Downlink Data Delivery Status procedure is to provide feedback from the WT to the eNB to allow the eNB to control the downlink user data flow via the WT for the respective E-RAB in LWA option or for respective UE in LWIP option. The WT may also transfer uplink user data for the concerned E-RAB to the eNB together with a DL DATA DELIVERY STATUS frame within the same GTP-U PDU.

When the WT decides to trigger the Feedback for Downlink Data Delivery procedure it shall report:

- a) the highest Xw-U sequence number successfully transferred towards or delivered to the UE among those PDUs received from the eNB;
- b) the desired buffer size in bytes for:
 - for LWA option: the concerned E-RAB;
 - for LWIP option: the concerned UE;
- c) the minimum desired buffer size in bytes for the UE;
- d) the Xw-U packets that were declared as being “lost” by the WT and have not yet been reported to the eNB within the DL DATA DELIVERY STATUS frame.

NOTE: If an E-UTRAN deployment has decided not to use the Transfer of Downlink User Data procedure, d) above is not applicable.

The DL DATA DELIVERY STATUS frame shall also include an indication whether the frame is the last DL status report received in the course of releasing a bearer from the WT. When receiving such indication, if applicable, the eNB considers that no more UL data is to be expected from the WT.

The eNB, when receiving the DL DATA DELIVERY STATUS frame:

- regards the desired buffer size under b) and c) above as the amount of data desired from the WT being declared;
- for the LWA option: from the Xw-U sequence number reported under a) above within the same frame, as well as from the most recently reported Xw-U sequence number(s) of all other E-RABs established for the UE;
- as the momentary desired buffer sizes, independent of buffer sizes indicated in the past.
- is allowed to remove the buffered PDCP or LWIP PDUs according to the feedback of successfully delivered PDCP or LWIP PDUs;
- decides upon the actions necessary to take for PDCP or LWIP PDUs reported other than successfully delivered.

After being reported to the eNB, the WT removes the respective Xw-U sequence numbers.



Figure 5.4.2.1-1: Successful Downlink Data Delivery Status

5.4.2.2 Unsuccessful operation

Void.

5.5 Elements for the Xw user plane protocol

5.5.1 General

In the present document the structure of frames are specified by using figures similar to figure 5.5.1-1.

Bits								Number of Octets	
7	6	5	4	3	2	1	0		
Field 1				Field 2				1	Octet 1
Field 3						Field 4		2	Octet 2
Field 4 continue				Spare					Octet 3
Field 6								2	Octet 4
Field 6 continue				Padding					Octet 5
Spare extension								0-m	

Figure 5.5.1-1: Example frame format

Unless otherwise indicated, fields which consist of multiple bits within an octet have the most significant bit located at the higher bit position (indicated above frame in figure 5.5.1-1). In addition, if a field spans several octets, most significant bits are located in lower numbered octets (right of frame in figure 5.5.1-1).

On the Xw interface, the frame is transmitted starting from the lowest numbered octet. Within each octet, the bits are sent according to decreasing bit position (bit position 7 first).

Spare bits should be set to “0” by the sender and should not be checked by the receiver.

The header part of the frame is always an integer number of octets. The payload part is octet aligned (by adding ‘Padding’ when needed). The total size of the frame shall not exceed 1018 octets (see TS 29.281 [3]).

The receiver should be able to remove an additional spare extension field that may be present at the end of a frame. See description of Spare extension field.

5.5.2 Frame format for the Xw user plane protocol

5.5.2.1 DL USER DATA (PDU Type 0)

This frame format is defined to allow the WT to detect lost Xw-U packets and is associated with the transfer of a Downlink LWA PDU over the Xw-U interface.

The following shows the respective DL USER DATA frame.

Bits								Number of Octets
7	6	5	4	3	2	1	0	
PDU Type (=0)				spare				1
Xw-U Sequence Number								3
Spare extension								0-4

Figure 5.5.2.1-1: DL USER DATA (PDU Type 0) Format

5.5.2.2 DL DATA DELIVERY STATUS (PDU Type 1)

This frame format is defined to transfer feedback to allow the receiving eNB to control the downlink user data flow via the WT.

Bits								Number of Octets
7	6	5	4	3	2	1	0	
PDU Type (=1)				Spare		Final Frame Ind.	Lost Packet Report	1
Highest successfully delivered Xw-U Sequence Number								3
Desired buffer size for the E-RAB or UE								4
Minimum desired buffer size for the UE								4
Number of lost Xw-U Sequence Number ranges reported								1
Start of lost Xw-U Sequence Number range								6* (Number of reported lost Xw-u SN ranges)
End of lost Xw-U Sequence Number range								
Spare extension								0-4

Figure 5.5.2.2-1: DL DATA DELIVERY STATUS (PDU Type 1) Format

5.5.3 Coding of information elements in frames

5.5.3.1 PDU Type

Description: The PDU Type indicates the structure of the Xw UP frame. The field takes the value of the PDU Type it identifies; i.e. “0” for PDU Type 0. The PDU type is in bit 4 to bit 7 in the first octet of the frame.

Value range: {0=DL USER DATA, 1=DL DATA DELIVERY STATUS, 2-15=reserved for future PDU type extensions}

Field length: 4 bits

5.5.3.2 Spare

Description: The spare field is set to “0” by the sender and should not be interpreted by the receiver. This field is reserved for later versions.

Value range: (0–2ⁿ–1).

Field Length: n bits.

5.5.3.3 Xw-U Sequence Number

Description: This parameter indicates the Xw-U sequence number as assigned by the respective eNB.

Value range: {0..2²⁴–1}.

NOTE: For LWA PDUs there should be one-to-one mapping between PDCP SN and Xw-U SN.

Field length: 3 octets.

5.5.3.4 Lost Packet Report

Description: This parameter indicates the presence of a list of lost Xw-U packets in the respective Xw UP frame.

Value range: {0=Lost Frame List not present, 1=Lost Frame List present}.

Field length: 1 bit.

5.5.3.5 Final Frame Indication

Description: This parameter indicates whether the frame is the last DL status report as described in clause 5.4.2.1.

Value range: {0=Frame is not final, 1= Frame is final}.

Field length: 1 bit.

5.5.3.6 Highest successfully delivered Xw-U Sequence Number

Description:

In case of the LWA option, this parameter indicates feedback about the in-sequence delivery status of LWA PDUs at the WT towards, or to the UE.

In case of the LWIP option, this parameter indicates feedback about the in-sequence transmission status of LWIP PDUs at the WT towards the UE.

Value range: {0..2²⁴–1}.

Field length: 3 octets.

5.5.3.7 Desired buffer size for the E-RAB or UE

Description:

In case of the LWA option, this parameter indicates the desired buffer size for the concerned E-RAB as specified in clause 5.4.2.1.

In case of the LWIP option, this parameter indicates the desired buffer size for the concerned UE as specified in clause 5.4.2.1.

Value range: $\{0..2^{32}-1\}$.

Field length: 4 octets.

5.5.3.8 Minimum desired buffer size for the UE

Description:

In case of the LWA option, this parameter indicates the minimum desired buffer size for all E-RABs established for the UE as specified in clause 5.4.2.1.

In case of the LWIP option, this parameter indicates the minimum desired buffer size for the UE as specified in clause 5.4.2.1.

Value range: $\{0..2^{32}-1\}$.

Field length: 4 octets.

5.5.3.9 Number of lost Xw-U Sequence Number ranges reported

Description: This parameter indicates the number of Xw-U Sequence Number ranges reported to be lost.

Value range: $\{1..167\}$.

Field length: 1 octet.

5.5.3.10 Start of lost Xw-U Sequence Number range

Description: This parameter indicates the start of an Xw-U sequence number range.

Value range: $\{0..2^{18}-1\}$.

Field length: 3 octets.

5.5.3.11 End of lost Xw-U Sequence Number range

Description: This parameter indicates the end of an Xw-U sequence number range.

Value range: $\{0..2^{18}-1\}$.

Field length: 3 octets.

5.5.3.12 Spare extension

Description: The spare extension field shall not be sent. The receiver should be capable of receiving a spare extension. The spare extension should not be interpreted by the receiver, since in later versions of the present document additional new fields might be added in place of the spare extension. The spare extension can be an integer number of octets carrying new fields or additional information; the maximum length of the spare extension field (m) depends on the PDU type.

Value range: $0-2^{m*8}-1$.

Field Length: 0–m octets. For the PDU Types defined in the present document m=4.

5.5.4 Timers

Not applicable.

Annex A (informative): Change history

Change history							
Date	Meeting	TDoc.	CR	Rev	Cat	Subject/Comment	New Version
2015-08	RAN3#89	R3-151597				Draft skeleton TR	0.0.1
2015-09	RAN3#89 0bis	R3-152214				TR number update	0.0.2
2015-11	RAN3#90	R3-152420				TR number update	0.1.0
2015-11	RAN3#90	R3-152907				Agreements from RAN3#90	0.2.0
2016-01	RAN3#A H	R3-160007				TR number update	1.1.0
2016-02	RAN3#A H	R3-160150				Agreements from RAN3#AH	1.2.0
2016-02	RAN3#91	R3-160158				TR number update	1.3.0
2016-02	RAN#91	R3-160546				Agreements from RAN3#91	1.5.0
2016-03	71	RP-160437				MCC cleanup and submission for approval	2.0.0
2016-03	71					Upgraded to Rel-13 and placed under change control	13.0.0
2016-06	72	RP-161046	1	1	F	TS 36.465 correction for LWA	13.1.0
2016-06	72	RP-161046	3	2	F	Correction to the description of the Xw UP protocol services and Xw-U Sequence Number	13.1.0
2016-06	72	RP-161046	4	1	F	Correction to the range of the Xw-U Sequence Number	13.1.0
2017-03	RAN#75	RP-170535	0011		B	Enabling uplink data bearers	14.0.0
2017-03	RAN#75	RP-170543	0012	1	B	Enabling LWIP support over Xw	14.0.0
2017-09	RP-77	RP-171982	0017	1	A	Change of the name of the GTP container	14.1.0
2018-03	RP-79	RP-180473	0018	1	F	Avoiding exceeding the max size of the NR RAN Container	14.2.0

History

Document history		
V14.0.0	April 2017	Publication
V14.1.0	October 2017	Publication
V14.2.0	April 2018	Publication