

ETSI TS 136 463 V13.0.0 (2016-04)



TECHNICAL SPECIFICATION

**LTE;
Evolved Universal Terrestrial
Radio Access Network (E-UTRAN) and Wireless LAN (WLAN);
Xw application protocol (XwAP)
(3GPP TS 36.463 version 13.0.0 Release 13)**



Reference

DTS/TSGR-0336463vd00

Keywords

LTE

ETSI

650 Route des Lucioles
F-06921 Sophia Antipolis Cedex - FRANCE

Tel.: +33 4 92 94 42 00 Fax: +33 4 93 65 47 16

Siret N° 348 623 562 00017 - NAF 742 C
Association à but non lucratif enregistrée à la
Sous-Préfecture de Grasse (06) N° 7803/88

Important notice

The present document can be downloaded from:
<http://www.etsi.org/standards-search>

The present document may be made available in electronic versions and/or in print. The content of any electronic and/or print versions of the present document shall not be modified without the prior written authorization of ETSI. In case of any existing or perceived difference in contents between such versions and/or in print, the only prevailing document is the print of the Portable Document Format (PDF) version kept on a specific network drive within ETSI Secretariat.

Users of the present document should be aware that the document may be subject to revision or change of status. Information on the current status of this and other ETSI documents is available at
<http://portal.etsi.org/tb/status/status.asp>

If you find errors in the present document, please send your comment to one of the following services:
<https://portal.etsi.org/People/CommitteeSupportStaff.aspx>

Copyright Notification

No part may be reproduced or utilized in any form or by any means, electronic or mechanical, including photocopying and microfilm except as authorized by written permission of ETSI.

The content of the PDF version shall not be modified without the written authorization of ETSI.
The copyright and the foregoing restriction extend to reproduction in all media.

© European Telecommunications Standards Institute 2016.
All rights reserved.

DECT™, **PLUGTESTS™**, **UMTS™** and the ETSI logo are Trade Marks of ETSI registered for the benefit of its Members.
3GPP™ and **LTE™** are Trade Marks of ETSI registered for the benefit of its Members and of the 3GPP Organizational Partners.
GSM® and the GSM logo are Trade Marks registered and owned by the GSM Association.

Intellectual Property Rights

IPRs essential or potentially essential to the present document may have been declared to ETSI. The information pertaining to these essential IPRs, if any, is publicly available for **ETSI members and non-members**, and can be found in ETSI SR 000 314: *"Intellectual Property Rights (IPRs); Essential, or potentially Essential, IPRs notified to ETSI in respect of ETSI standards"*, which is available from the ETSI Secretariat. Latest updates are available on the ETSI Web server (<https://ipr.etsi.org>).

Pursuant to the ETSI IPR Policy, no investigation, including IPR searches, has been carried out by ETSI. No guarantee can be given as to the existence of other IPRs not referenced in ETSI SR 000 314 (or the updates on the ETSI Web server) which are, or may be, or may become, essential to the present document.

Foreword

This Technical Specification (TS) has been produced by ETSI 3rd Generation Partnership Project (3GPP).

The present document may refer to technical specifications or reports using their 3GPP identities, UMTS identities or GSM identities. These should be interpreted as being references to the corresponding ETSI deliverables.

The cross reference between GSM, UMTS, 3GPP and ETSI identities can be found under <http://webapp.etsi.org/key/queryform.asp>.

Modal verbs terminology

In the present document "**shall**", "**shall not**", "**should**", "**should not**", "**may**", "**need not**", "**will**", "**will not**", "**can**" and "**cannot**" are to be interpreted as described in clause 3.2 of the [ETSI Drafting Rules](#) (Verbal forms for the expression of provisions).

"**must**" and "**must not**" are **NOT** allowed in ETSI deliverables except when used in direct citation.

Contents

Intellectual Property Rights	2
Foreword.....	2
Modal verbs terminology.....	2
Foreword.....	6
1 Scope	7
2 References	7
3 Definitions, symbols and abbreviations	8
3.1 Definitions	8
3.2 Abbreviations	8
4 General	8
4.1 Procedure specification principles.....	8
4.2 Forwards and backwards compatibility	9
4.3 Specification notations	9
5 XwAP services	9
5.1 General	9
5.2 XwAP procedures.....	9
5.3 Parallel transactions.....	10
6 Services expected from signalling transport.....	10
7 Functions of XwAP	10
8 XwAP procedures	10
8.1 Elementary procedures	10
8.2 Xw Setup	11
8.2.1 General.....	11
8.2.2 Successful Operation	11
8.2.3 Unsuccessful Operation	12
8.2.4 Abnormal Conditions.....	12
8.3 WT Configuration Update.....	12
8.3.1 General.....	12
8.3.2 Successful Operation	12
8.3.3 Unsuccessful Operation	13
8.3.4 Abnormal Conditions.....	13
8.4 WT Status Reporting Initiation	13
8.4.1 General.....	13
8.4.2 Successful Operation	13
8.4.3 Unsuccessful Operation	14
8.4.4 Abnormal Conditions.....	14
8.5 WT Status Reporting	14
8.5.1 General.....	14
8.5.2 Successful Operation	14
8.5.3 Unsuccessful Operation	14
8.5.4 Abnormal Conditions.....	14
8.6 Error Indication	15
8.6.1 General.....	15
8.6.2 Successful Operation	15
8.6.3 Unsuccessful Operation	15
8.6.4 Abnormal Conditions.....	15
8.7 Reset.....	16
8.7.1 General.....	16

8.7.2	Successful Operation	16
8.7.3	Unsuccessful Operation	16
8.7.4	Abnormal Conditions.....	16
8.8	WT Addition Preparation	17
8.8.1	General.....	17
8.8.2	Successful Operation	17
8.8.3	Unsuccessful Operation	18
8.8.4	Abnormal Conditions.....	18
8.9	eNB Initiated WT Modification Preparation	18
8.9.1	General.....	18
8.9.2	Successful Operation	18
8.9.3	Unsuccessful Operation	19
8.9.4	Abnormal Conditions.....	20
8.10	WT Initiated WT Modification	20
8.10.1	General.....	20
8.10.2	Successful Operation	20
8.10.3	Unsuccessful Operation	21
8.10.4	Abnormal Conditions.....	21
8.11	eNB Initiated WT Release.....	21
8.11.1	General.....	21
8.11.2	Successful Operation	21
8.11.3	Unsuccessful Operation	22
8.11.4	Abnormal Conditions.....	22
8.12	WT Initiated WT Release	22
8.12.1	General.....	22
8.12.2	Successful Operation	22
8.12.3	Unsuccessful Operation	22
8.12.4	Abnormal Conditions.....	22
8.13	WT Association Confirmation	23
8.13.1	General.....	23
8.13.2	Successful Operation	23
8.13.3	Unsuccessful Operation	23
8.13.4	Abnormal Conditions.....	23
9	Elements for XwAP Communication.....	23
9.0	General	23
9.1	Message Functional Definition and Content	23
9.1.1	Xw SETUP REQUEST	23
9.1.2	Xw SETUP RESPONSE	24
9.1.3	Xw SETUP FAILURE.....	24
9.1.4	WT CONFIGURATION UPDATE.....	24
9.1.5	WT CONFIGURATION UPDATE ACKNOWLEDGE.....	25
9.1.6	WT CONFIGURATION UPDATE FAILURE.....	25
9.1.7	WT STATUS REQUEST	25
9.1.8	WT STATUS RESPONSE	26
9.1.9	WT STATUS FAILURE	28
9.1.10	WT STATUS REPORT.....	29
9.1.11	ERROR INDICATION.....	29
9.1.12	RESET	29
9.1.13	RESET RESPONSE	30
9.1.14	WT ADDITION REQUEST	30
9.1.15	WT ADDITION REQUEST ACKNOWLEDGE	30
9.1.16	WT ADDITION REQUEST REJECT.....	31
9.1.17	WT MODIFICATION REQUEST	31
9.1.18	WT MODIFICATION REQUEST ACKNOWLEDGE	32
9.1.19	WT MODIFICATION REQUEST REJECT	33
9.1.20	WT MODIFICATION REQUIRED.....	34
9.1.21	WT MODIFICATION CONFIRM.....	34
9.1.22	WT MODIFICATION REFUSE	35
9.1.23	WT RELEASE REQUEST	35
9.1.24	WT RELEASE REQUIRED.....	35
9.1.25	WT RELEASE CONFIRM	36

9.1.26	WT ASSOCIATION CONFIRMATION	36
9.2	Information Element definitions.....	36
9.2.0	General.....	36
9.2.1	Message Type	37
9.2.2	Global eNB ID.....	37
9.2.3	PLMN Identity.....	37
9.2.4	Cause	38
9.2.5	Criticality Diagnostics	41
9.2.6	WT ID.....	41
9.2.7	WLAN Information	42
9.2.8	BSSID.....	42
9.2.9	SSID.....	43
9.2.10	HESSID	43
9.2.11	BSS Load.....	43
9.2.12	WAN Metrics.....	43
9.2.13	WLAN Band Information.....	44
9.2.14	Channel Utilization.....	44
9.2.15	WLAN Backhaul Rate	44
9.2.16	UE Identity.....	44
9.2.17	Bit Rate	44
9.2.18	E-RAB ID	45
9.2.19	E-RAB Level QoS Parameters.....	45
9.2.20	Allocation and Retention Priority	45
9.2.21	GBR QoS Information	46
9.2.22	GTP Tunnel Endpoint.....	47
9.2.23	E-RAB List	47
9.2.24	UE XwAP ID.....	47
9.2.25	Station Count	47
9.2.26	Available Channel Utilization.....	47
9.2.27	WLAN Security Information	48
9.2.28	Mobility Set	48
9.3	Message and Information Element Abstract Syntax (with ASN.1).....	49
9.3.1	General.....	49
9.3.2	Usage of Private Message Mechanism for Non-standard Use.....	49
9.3.3	Elementary Procedure Definitions.....	49
9.3.4	PDU Definitions	54
9.3.5	Information Element definitions	72
9.3.6	Common definitions	83
9.3.7	Constant definitions	84
9.3.8	Container definitions.....	87
9.4	Message transfer syntax	91
10	Handling of unknown, unforeseen and erroneous protocol data.....	91
Annex A (informative): Change history		92
History		93

Foreword

This Technical Specification has been produced by the 3rd Generation Partnership Project (3GPP).

The contents of the present document are subject to continuing work within the TSG and may change following formal TSG approval. Should the TSG modify the contents of the present document, it will be re-released by the TSG with an identifying change of release date and an increase in version number as follows:

Version x.y.z

where:

- x the first digit:
 - 1 presented to TSG for information;
 - 2 presented to TSG for approval;
 - 3 or greater indicates TSG approved document under change control.
- y the second digit is incremented for all changes of substance, i.e. technical enhancements, corrections, updates, etc.
- z the third digit is incremented when editorial only changes have been incorporated in the document.

1 Scope

The present document specifies the signalling procedures of the control plane between an eNB and WLAN Termination (WT). XwAP supports the functions of Xw interface by signalling procedures defined in this document.

2 References

The following documents contain provisions which, through reference in this text, constitute provisions of the present document.

- References are either specific (identified by date of publication, edition number, version number, etc.) or non-specific.
- For a specific reference, subsequent revisions do not apply.
- For a non-specific reference, the latest version applies. In the case of a reference to a 3GPP document (including a GSM document), a non-specific reference implicitly refers to the latest version of that document *in the same Release as the present document*.

- [1] 3GPP TR 21.905: "Vocabulary for 3GPP Specifications".
- [2] 3GPP TS 36.300: "Evolved Universal Terrestrial Radio Access (E-UTRA) and Evolved Universal Terrestrial Radio Access Network (E-UTRAN); Overall description; Stage 2".
- [3] 3GPP TS 29.281: "General Packet Radio System (GPRS) Tunnelling Protocol User Plane (GTPv1-U)".
- [4] 3GPP TS 36.462: 'Evolved Universal Terrestrial Radio Access Network (E-UTRAN) and Wireless LAN (WLAN); Xw signalling support'
- [5] ITU-T Recommendation X.691 (2002-07): "Information technology - ASN.1 encoding rules - Specification of Packed Encoding Rules (PER) ".
- [6] ITU-T Recommendation X.680 (07/2002): "Information technology – Abstract Syntax Notation One (ASN.1): Specification of basic notation".
- [7] ITU-T Recommendation X.681 (07/2002): "Information technology – Abstract Syntax Notation One (ASN.1): Information object specification".
- [8] 3GPP TS 36.413: "Evolved Universal Terrestrial Radio Access Network (E-UTRAN); S1 Application Protocol (S1AP)".
- [9] 3GPP TS 36.401: "Evolved Universal Terrestrial Radio Access Network (E-UTRAN); Architecture description".
- [10] Wi-Fi Alliance® Technical Committee, Hotspot 2.0 Technical Task Group Hotspot 2.0 (Release 2) Technical Specification Version 3.11.
- [11] IEEE Std 802.11™-2012, IEEE Standard for Information technology-Telecommunications and information exchange between systems-Local and metropolitan area network.
- [12] 3GPP TR 25.921: 'Guidelines and principles for protocol description and error handling'
- [13] 3GPP TS 23.203: 'Numbering, addressing and identification'
- [14] 3GPP TS 23.401: 'General Packet Radio Service (GPRS) enhancements for Evolved Universal Terrestrial Radio Access Network (E-UTRAN) access'
- [15] 3GPP TS 36.464: 'Evolved Universal Terrestrial Radio Access Network (E-UTRAN) and Wireless LAN (WLAN); Xw data transport'

- [16] 3GPP TS 29.281: 'General Packet Radio System (GPRS) Tunnelling Protocol User Plane (GTPv1-U)'
- [17] 3GPP TS 33.401: '3GPP System Architecture Evolution (SAE); Security architecture'

3 Definitions, symbols and abbreviations

3.1 Definitions

For the purposes of the present document, the terms and definitions given in TR 21.905 [1] and the following apply. A term defined in the present document takes precedence over the definition of the same term, if any, in TR 21.905 [1].

Elementary Procedure: XwAP protocol consists of Elementary Procedures (EPs). An XwAP Elementary Procedure is a unit of interaction between an eNB and WT. An EP consists of an initiating message and possibly a response message. Two kinds of EPs are used:

- **Class 1:** Elementary Procedures with response (success or failure),
- **Class 2:** Elementary Procedures without response.

E-RAB: Defined in TS 36.401 [9].

WT: Defined in TS 36.300 [2].

3.2 Abbreviations

For the purposes of the present document, the abbreviations given in TR 21.905 [1] and the following apply. An abbreviation defined in the present document takes precedence over the definition of the same abbreviation, if any, in TR 21.905 [1].

DL	Downlink
eNB	E-UTRAN NodeB
EP	Elementary Procedure
EPC	Evolved Packet Core
E-RAB	E-UTRAN Radio Access Bearer
E-UTRAN	Evolved UTRAN
IE	Information Element
LWA	LTE/WLAN Aggregation
PDCP	Packet Data Convergence Protocol
RCLWI	RAN Controlled LTE-WLAN Interworking
SN	Sequence Number
TAC	Tracking Area Code
UE	User Equipment
UL	Uplink
WT	WLAN Termination
Xw UP	Xw User Plane

4 General

4.1 Procedure specification principles

The principle for specifying the procedure logic is to specify the functional behaviour of the terminating eNB exactly and completely. Any rule that specifies the behaviour of the originating eNB shall be possible to be verified with information that is visible within the system.

The following specification principles have been applied for the procedure text in clause 8:

- The procedure text discriminates between:

- 1) Functionality which "shall" be executed

The procedure text indicates that the receiving node "shall" perform a certain function Y under a certain condition. If the receiving node supports procedure X but cannot perform functionality Y requested in the initiating message of a Class 1 EP, the receiving node shall respond with the message used to report unsuccessful outcome for this procedure, containing an appropriate cause value.

- 2) Functionality which "shall, if supported" be executed

The procedure text indicates that the receiving node "shall, if supported," perform a certain function Y under a certain condition. If the receiving node supports procedure X, but does not support functionality Y, the receiving node shall proceed with the execution of the EP, possibly informing the requesting node about the not supported functionality.

- Any required inclusion of an optional IE in a response message is explicitly indicated in the procedure text. If the procedure text does not explicitly indicate that an optional IE shall be included in a response message, the optional IE shall not be included. For requirements on including *Criticality Diagnostics* IE, see section 10.

4.2 Forwards and backwards compatibility

The forwards and backwards compatibility of the protocol is assured by a mechanism where all current and future messages, and IEs or groups of related IEs, include ID and criticality fields that are coded in a standard format that will not be changed in the future. These parts can always be decoded regardless of the standard version.

4.3 Specification notations

For the purposes of the present document, the following notations apply:

Procedure	When referring to an elementary procedure in the specification the Procedure Name is written with the first letters in each word in upper case characters followed by the word "procedure", e.g. Handover Preparation procedure.
Message	When referring to a message in the specification the MESSAGE NAME is written with all letters in upper case characters followed by the word "message", e.g. HANDOVER REQUEST message.
IE	When referring to an information element (IE) in the specification the <i>Information Element Name</i> is written with the first letters in each word in upper case characters and all letters in Italic font followed by the abbreviation "IE", e.g. <i>E-RAB ID</i> IE.
Value of an IE	When referring to the value of an information element (IE) in the specification the "Value" is written as it is specified in sub clause 9.2 enclosed by quotation marks, e.g. "Value".

5 XwAP services

5.1 General

The present clause describes the services offered between an eNB and WT.

5.2 XwAP procedures

The Xw interface XwAP procedures may be UE-associated or non UE-associated. UE-associated XwAP procedures are used to handle the configuration and modification to support LWA for a specific UE. Non UE-associated procedures support LWA and RCLWI, and are not related to a specific UE.

5.3 Parallel transactions

Unless explicitly indicated in the procedure specification, at any instance in time one protocol peer shall have a maximum of one ongoing XwAP procedure related to a certain UE.

6 Services expected from signalling transport

The signalling connection shall provide in sequence delivery of XwAP messages. XwAP shall be notified if the signalling connection breaks.

Xw signalling transport is described in TS 36.462 [4].

7 Functions of XwAP

The XwAP protocol provides the following functions:

- Setting up the Xw. This function is used to exchange the necessary data for the eNB and the WT to set up the Xw interface and implicitly perform an Xw Reset.
- WT Configuration Update. This function allows updating of application level data needed for the eNB and the WT to interoperate correctly on the Xw interface.
- WLAN Status Reporting. This function allows the eNB to configure reporting of load-related information from the WT.
- LTE-WLAN Aggregation. This function allows the eNB to request a WT to provide radio resources for a certain UE while keeping responsibility for that UE.
- Reporting of General Error Situations. This function allows reporting of general error situations, for which function specific error messages have not been defined.
- Resetting the Xw. This function is used to reset the Xw interface.

The mapping between the above functions and Xw EPs is shown in the table below.

Table 7-1: Mapping between XwAP functions and XwAP EPs

Function	Elementary Procedure(s)
WLAN Status Reporting	a) WT Status Reporting Initiation b) WT Status Reporting
Setting up the Xw	Xw Setup
WT Configuration Update	WT Configuration Update
LTE-WLAN Aggregation	a) WT Addition Preparation b) WT Association Confirmation c) eNB Initiated WT Modification d) WT Initiated WT Modification e) eNB Initiated WT Release f) WT Initiated WT Release
Reporting of General Error Situations	Error Indication
Resetting the Xw	Reset

8 XwAP procedures

8.1 Elementary procedures

In the following tables, all EPs are divided into Class 1 and Class 2 EPs.

Table 8.1-1: Class 1 Elementary Procedures

Elementary Procedure	Initiating Message	Successful Outcome	Unsuccessful Outcome
		Response message	Response message
Xw Setup	Xw SETUP REQUEST	Xw SETUP RESPONSE	Xw SETUP FAILURE
WT Configuration Update	WT CONFIGURATION UPDATE	WT CONFIGURATION UPDATE ACKNOWLEDGE	WT CONFIGURATION UPDATE FAILURE
WT Status Reporting Initiation	WT STATUS REQUEST	WT STATUS RESPONSE	WT STATUS FAILURE
WT Addition Preparation	WT ADDITION REQUEST	WT ADDITION REQUEST ACKNOWLEDGE	WT ADDITION REQUEST REJECT
eNB Initiated WT Modification	WT MODIFICATION REQUEST	WT MODIFICATION REQUEST ACKNOWLEDGE	WT MODIFICATION REQUEST REJECT
WT Initiated WT Modification	WT MODIFICATION REQUIRED	WT MODIFICATION CONFIRM	WT MODIFICATION REFUSE
WT Initiated WT Release	WT RELEASE REQUEST	WT RELEASE CONFIRM	
Reset	RESET REQUEST	RESET RESPONSE	

Table 8.1-2: Class 2 Elementary Procedures

Elementary Procedure	Initiating Message
WT Status Reporting	WT STATUS REPORT
Error Indication	ERROR INDICATION
WT Association Confirmation	WT ASSOCIATION CONFIRMATION
eNB Initiated WT Release	WT RELEASE REQUEST

8.2 Xw Setup

8.2.1 General

The purpose of the Xw Setup procedure is to exchange application level configuration data needed for the eNB and the WT to interoperate correctly over the Xw interface. This procedure erases any existing application level configuration data in the two nodes and replaces it by the one received. This procedure also resets the Xw interface.

The procedure uses non-UE-associated signalling.

8.2.2 Successful Operation

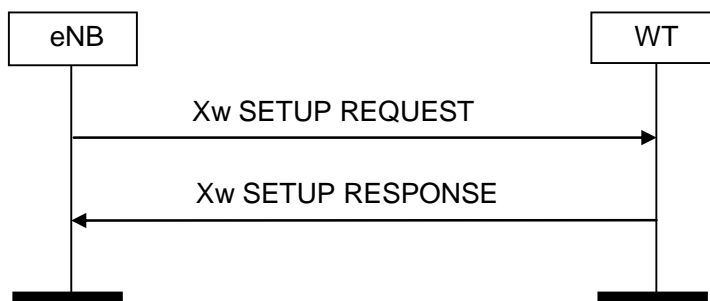


Figure 8.2.2-1: Xw Setup, successful operation

An eNB initiates the procedure by sending the Xw SETUP REQUEST message to a candidate WT. The candidate WT replies with the Xw SETUP RESPONSE message. The candidate WT shall reply with a list of relevant WLAN identifiers.

8.2.3 Unsuccessful Operation

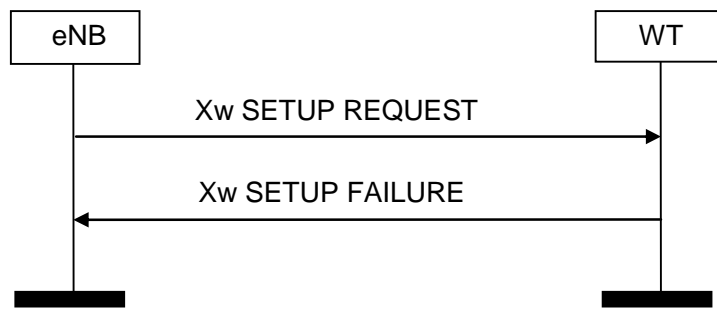


Figure 8.2.3-1: Xw Setup, unsuccessful operation

If the candidate WT cannot accept the setup, it shall respond with an Xw SETUP FAILURE message with an appropriate cause value.

8.2.4 Abnormal Conditions

If the first message received for a specific TNL association is not an Xw SETUP REQUEST, Xw SETUP RESPONSE, or Xw SETUP FAILURE message, then this shall be treated as a logical error.

8.3 WT Configuration Update

8.3.1 General

The purpose of the WT Configuration Update procedure is to update application level configuration data needed for an eNB and a WT to interoperate correctly over the Xw interface.

The procedure uses non-UE-associated signalling.

8.3.2 Successful Operation

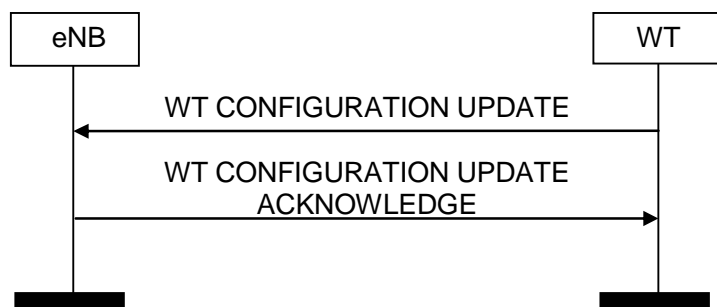


Figure 8.3.2-1: WT Configuration Update, successful operation

A WT initiates the procedure by sending a WT CONFIGURATION UPDATE message to an eNB. Such message shall include an appropriate set of up-to-date configuration data, including, but not limited to, relevant lists of added, modified and deleted WLAN identifiers that the WT has just taken into operational use.

8.3.3 Unsuccessful Operation

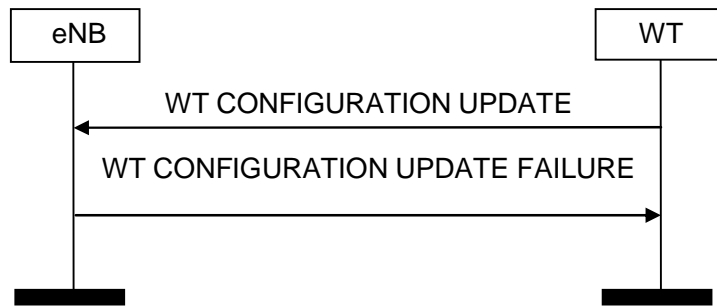


Figure 8.3.3-1: WT Configuration Update, successful operation

If the eNB cannot accept the update, it shall respond with a WT CONFIGURATION UPDATE FAILURE message with an appropriate cause value.

8.3.4 Abnormal Conditions

Not applicable.

8.4 WT Status Reporting Initiation

8.4.1 General

This procedure is used by an eNB to request the reporting of load measurements to a WT.

The procedure uses non-UE-associated signalling.

8.4.2 Successful Operation

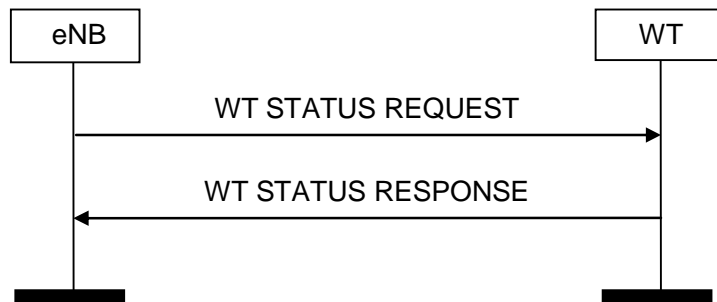


Figure 8.4.2-1: WT Status Reporting Initiation procedure, successful operation

The procedure is initiated with a WT STATUS REQUEST message sent from the eNB to the WT.

8.4.3 Unsuccessful Operation

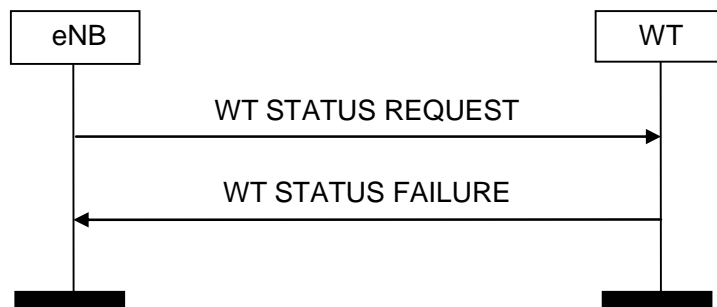


Figure 8.4.3-1: WT Status Reporting Initiation procedure, unsuccessful operation

If none of the requested measurements can be initiated, the WT shall send a WT STATUS FAILURE message. The *Cause* IE shall be set to an appropriate value for each requested measurement object.

8.4.4 Abnormal Conditions

Not applicable.

8.5 WT Status Reporting

8.5.1 General

This procedure is initiated by the WT to report the result of measurements admitted by the WT following a successful WT Status Reporting Initiation procedure.

The procedure uses non-UE-associated signalling.

8.5.2 Successful Operation

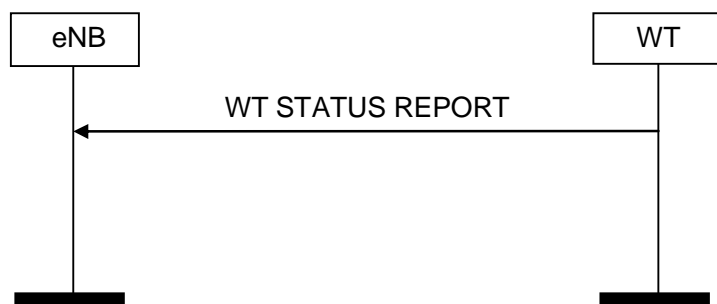


Figure 8.5.2-1: WT Status Reporting procedure, successful operation

The WT shall report the results of the admitted measurements in the WT STATUS REPORT message. The admitted measurements are the measurements that were successfully initiated during the preceding WT Status Reporting Initiation procedure.

8.5.3 Unsuccessful Operation

Not applicable.

8.5.4 Abnormal Conditions

Not applicable.

8.6 Error Indication

8.6.1 General

The Error Indication procedure is initiated by a node to report detected errors in one incoming message, provided they cannot be reported by an appropriate failure message.

If the error situation arises due to reception of a message which used UE-associated signalling, then the Error Indication procedure uses UE-associated signalling. Otherwise the procedure uses non UE-associated signalling.

8.6.2 Successful Operation



Figure 8.6.2-1: Error Indication procedure, eNB originated. Successful operation.



Figure 8.6.2-2: Error Indication procedure, WT originated. Successful operation.

When the conditions defined in clause 10 are fulfilled, the Error Indication procedure is initiated by an ERROR INDICATION message sent from the receiving node.

The ERROR INDICATION message shall contain at least either the *Cause IE* or the *Criticality Diagnostics IE*. In case the Error Indication procedure is triggered by UE associated signalling, the eNB *UE XwAP ID IE* and the WT *UE XwAP ID IE* shall be included in the ERROR INDICATION message. If one or both of eNB *UE XwAP ID IE* and the WT *UE XwAP ID IE* are not correct, the cause shall be set to an appropriate value, e.g., 'Unknown eNB UE XwAP ID', 'Unknown WT UE XwAP ID' or 'Unknown pair of UE XwAP ID'.

8.6.3 Unsuccessful Operation

Not applicable.

8.6.4 Abnormal Conditions

Not applicable.

8.7 Reset

8.7.1 General

The purpose of the Reset procedure is to align the resources in the eNB and in the WT in the event of an abnormal failure. The procedure resets the Xw interface. This procedure does not affect the application level configuration data exchanged during, e.g., the Xw Setup procedure.

The procedure uses non UE-associated signalling.

8.7.2 Successful Operation

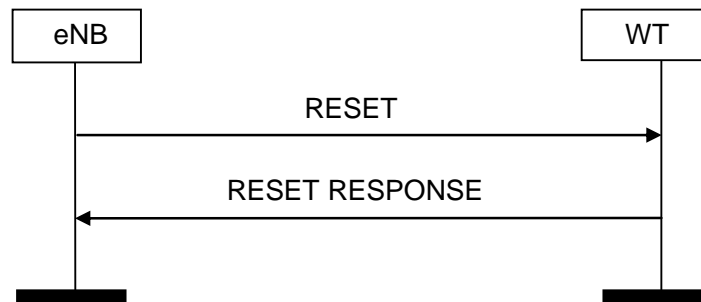


Figure 8.7.2-1: Reset, eNB-initiated. Successful operation.

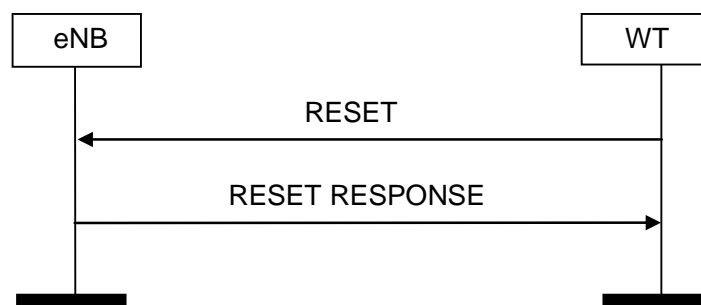


Figure 8.7.2-2: Reset, WT-initiated. Successful operation.

The procedure is initiated with a RESET message sent from the initiating node. Upon receipt of this message, the receiving node shall abort any other ongoing procedures (except another Reset procedure) over Xw with the initiating node. The receiving node shall delete all the context information related to the initiating node, except the application level configuration data exchanged during Xw Setup or WT Configuration Update procedures, and release the corresponding resources. After completing the release of the resources, the receiving node shall respond with a RESET RESPONSE message.

8.7.3 Unsuccessful Operation

Not applicable.

8.7.4 Abnormal Conditions

Not applicable.

8.8 WT Addition Preparation

8.8.1 General

The purpose of the WT Addition Preparation procedure is to request the WT to allocate resources for LTE-WLAN aggregation operation for a specific UE.

The procedure uses UE-associated signalling.

8.8.2 Successful Operation

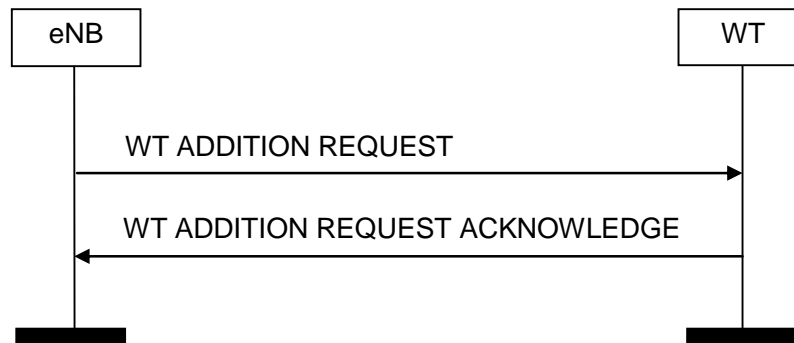


Figure 8.8.2-1: WT Addition Preparation, successful operation

The eNB initiates the procedure by sending the WT ADDITION REQUEST message to the WT.

The allocation of resources according to the values of the *Allocation and Retention Priority* IE included in the *E-RAB Level QoS Parameters* IE shall follow the principles described for the E-RAB Setup Procedure in TS 36.413 [8].

NOTE: Due to inherent features of the WLAN radio interface, it may not always be possible to guarantee a bit rate. If the *GBR QoS Information* IE is present in the WT ADDITION REQUEST, the WT may accept the request even though it may not be able to guarantee the bit rate signalled in the *GBR QoS Information* IE. The eNB may therefore need to monitor the bit rate of offloaded GBR bearers.

If the WT ADDITION REQUEST message contains the *Serving PLMN* IE, the WT may take it into account for the allocation of resources for LWA.

At reception of the WT ADDITION REQUEST message the WT shall:

- use the information included in the *Mobility Set* IE as the WLAN Mobility Set configured for LWA, as defined in TS 36.300 [2];
- store the *WLAN Security Information* IE, if included, and use it to establish the required security relation towards the UE.

The WT shall report to the eNB, in the WT ADDITION REQUEST ACKNOWLEDGE message, the result for all the requested E-RABs in the following way:

- A list of E-RABs which are successfully established shall be included in the *E-RABs Admitted To Be Added List* IE.
- A list of E-RABs which failed to be established shall be included in the *E-RABs Not Admitted List* IE.

8.8.3 Unsuccessful Operation

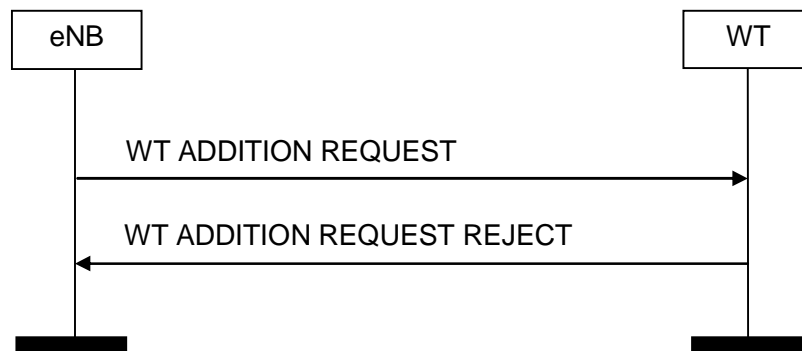


Figure 8.8.3-1: WT Addition Preparation, unsuccessful operation

If the WT is not able to accept any of the bearers or a failure occurs during the WT Addition Preparation, the WT sends the WT ADDITION REQUEST REJECT message with an appropriate cause value to the eNB.

8.8.4 Abnormal Conditions

If the WT receives a WT ADDITION REQUEST message containing multiple *E-RAB ID* IEs (in the *E-RABs To Be Added List* IE) set to the same value, the WT shall consider the establishment of the corresponding E-RAB as failed.

If the WT receives a WT ADDITION REQUEST message containing an *E-RAB Level QoS Parameters* IE which contains a *QCI* IE indicating a GBR bearer (as defined in TS 23.203 [13]), and which does not contain the *GBR QoS Information* IE, the WT shall consider the establishment of the corresponding E-RAB as failed.

8.9 eNB Initiated WT Modification Preparation

8.9.1 General

This procedure is used to enable an eNB to request a WT to modify the UE context at the WT.

The procedure uses UE-associated signalling.

8.9.2 Successful Operation

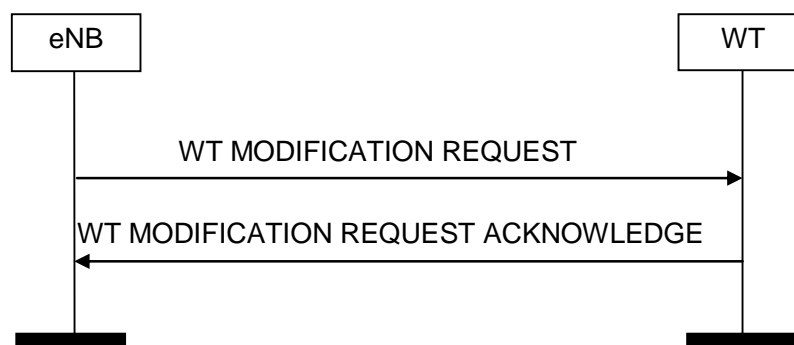


Figure 8.9.2-1: eNB initiated WT Modification, successful operation

The eNB initiates the procedure by sending the WT MODIFICATION REQUEST message to the WT.

The WT MODIFICATION REQUEST message may contain within the *UE Context Information* IE:

- E-RABs to be added within the *E-RABs To Be Added Item* IE;
- E-RABs to be modified within the *E-RABs To Be Modified Item* IE;

- E-RABs to be released within the *E-RABs To Be Released Item IE*;
- WLAN security information in the *WLAN Security Information IE*.

If the *WLAN Security Information IE* is included in the WT MODIFICATION REQUEST message the WT shall store the information contained in this IE, and use it to establish the required security relation towards the UE.

The allocation of resources according to the values of the *Allocation and Retention Priority IE* included in the *E-RAB Level QoS Parameters IE* shall follow the principles described for the E-RAB Setup procedure in TS 36.413 [8].

NOTE: Due to inherent features of the WLAN radio interface, it may not always be possible to guarantee a bit rate. If the *GBR QoS Information IE* is present in the WT MODIFICATION REQUEST, the WT may accept the request even though it may not be able to guarantee the bit rate signalled in the *GBR QoS Information IE*. The eNB may therefore need to monitor the bit rate of offloaded GBR bearers.

If the WT MODIFICATION REQUEST message contains the *Serving PLMN IE*, the WT may take it into account for the allocation of resources for LWA.

If at least one of the requested modifications is admitted by the WT, the WT shall modify the related part of the UE context accordingly and send the WT MODIFICATION REQUEST ACKNOWLEDGE message back to the eNB.

The WT shall include the E-RABs for which resources have been either added or modified or released at the WT either in the *E-RABs Admitted To Be Added List IE* or the *E-RABs Admitted To Be Modified List IE* or the *E-RABs Admitted To Be Released List IE*. The WT shall include the E-RABs that have not been admitted in the *E-RABs Not Admitted List IE* with an appropriate cause value.

For each E-RAB to be modified, if the WT MODIFICATION REQUEST message includes the *eNB GTP Tunnel Endpoint IE* in the *E-RABs To Be Modified Item IE*, the WT shall act as specified in TS 36.300 [2].

For each E-RAB to be released, if applicable, the eNB may provide the *DL Forwarding GTP Tunnel Endpoint IE* within the *E-RABs To Be Released Item IE* of the WT MODIFICATION REQUEST message.

If the *E-RAB level QoS parameter IE* is included in the WT MODIFICATION REQUEST message for an E-RAB to be modified, the WT shall allocate respective resources as described in TS 36.300 [2].

For an E-RAB to be modified, the WT may include in the WT MODIFICATION REQUEST ACKNOWLEDGE message the *WT GTP Tunnel Endpoint IE*.

If the *Mobility Set IE* is included in the WT MODIFICATION REQUEST message, the WT shall use the information included in this IE as the WLAN Mobility Set configured for LWA, as defined in TS 36.300 [2].

8.9.3 Unsuccessful Operation

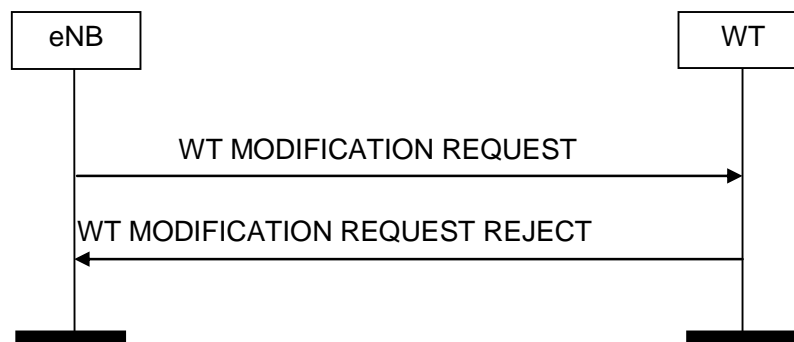


Figure 8.9.3-1: eNB initiated WT Modification, unsuccessful operation

If the WT does not admit any modification requested by the eNB, or a failure occurs during the eNB initiated WT Modification, the WT shall send the WT MODIFICATION REQUEST REJECT message to the eNB. The message shall contain the *Cause IE* with an appropriate value.

8.9.4 Abnormal Conditions

If the WT receives a WT MODIFICATION REQUEST message containing multiple *E-RAB ID* IEs (in the *E-RABs To Be Added List* IE and/or the *E-RABs To Be Modified List* IE) set to the same value, the WT shall not admit the action requested for the corresponding E-RABs.

If the WT receives a WT MODIFICATION REQUEST message containing multiple *E-RAB ID* IEs (in the *E-RAB To Be Released List* IE) set to the same value, the WT shall initiate the release of one corresponding E-RAB and ignore the duplication of the instances of the selected corresponding E-RABs.

If the WT receives a WT MODIFICATION REQUEST message containing a *E-RAB Level QoS Parameters* IE which contains a *QCI* IE indicating a GBR bearer (as defined in TS 23.203 [13]), and which does not contain the *GBR QoS Information* IE, the WT shall not admit the corresponding E-RAB.

Interaction with the WT initiated WT Modification procedure:

If the eNB, after having initiated the eNB initiated WT Modification procedure, receives the WT MODIFICATION REQUIRED message, the eNB shall refuse the WT initiated WT Modification procedure with an appropriate cause value in the *Cause* IE.

8.10 WT Initiated WT Modification

8.10.1 General

This procedure is used by the WT to modify the UE context in the WT. In particular, in this Release of the specification, this procedure is used to request to the eNB the release of LWA bearers, or change their WT GTP Tunnel Endpoints.

The procedure uses UE-associated signalling.

8.10.2 Successful Operation

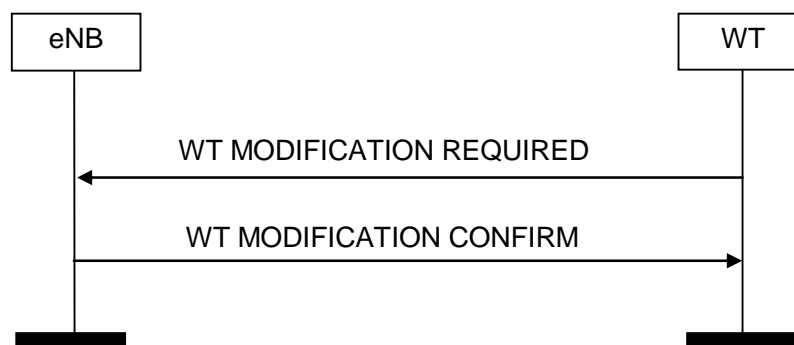


Figure 8.10.2-1: WT initiated WT Modification, successful operation

The WT initiates the procedure by sending the WT MODIFICATION REQUIRED message to the eNB.

The WT MODIFICATION REQUIRED message may contain

- E-RABs to be released within the *E-RABs To Be Released Item* IE;
- E-RABs to be modified within the *E-RABs To Be Modified Item* IE.

If the *WT GTP Tunnel Endpoint* IE is present in the *E-RABs To Be Modified Item* IE for a particular E-RAB, the eNB should use this information to change the Xw transport bearer associated to the concerned E-RAB.

If the eNB is able to perform the modifications requested by the WT, the eNB shall send the WT MODIFICATION CONFIRM message to the WT. If applicable, the eNB may provide for data forwarding of an E-RAB released the *DL Forwarding GTP Tunnel Endpoint* IE within the *E-RABs Confirmed To Be Released Item* IE.

8.10.3 Unsuccessful Operation

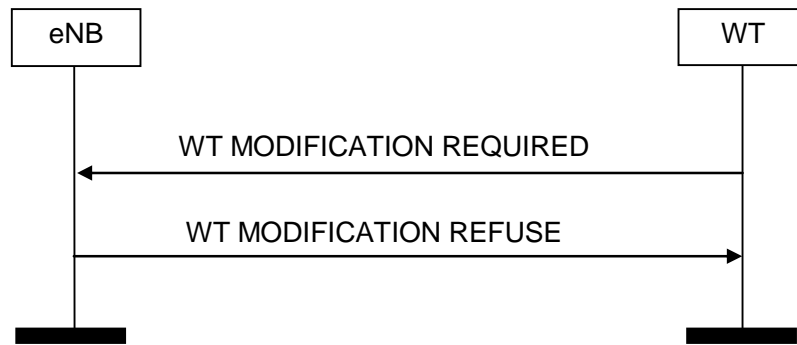


Figure 8.10.3-1: WT initiated WT Modification, unsuccessful operation

In case the requested modification cannot be performed successfully the eNB shall respond with the WT MODIFICATION REFUSE message to the WT with an appropriate cause value in the *Cause* IE.

8.10.4 Abnormal Conditions

If the value received in the *E-RAB ID* IE of any of the *E-RABs To Be Released Item* IE or of the *E-RABs To Be Modified Item* IE is not known at the eNB, the eNB shall regard the procedure as failed and may take appropriate actions like triggering the eNB initiated WT Release procedure.

Interaction with the eNB initiated WT Modification Preparation procedure:

If the WT, after having initiated the WT initiated WT Modification procedure, receives the WT MODIFICATION REQUEST message including other IEs than applicable forwarding addresses, the WT shall

- regard the WT initiated WT Modification Procedure as being failed,
- be prepared to receive the WT MODIFICATION REFUSE message from the eNB, and
- continue with the eNB initiated WT Modification procedure as specified in Section 8.9.

8.11 eNB Initiated WT Release

8.11.1 General

The eNB initiated WT Release procedure is triggered by the eNB to initiate the release of the resources for a specific UE.

The procedure uses UE-associated signalling.

8.11.2 Successful Operation



Figure 8.11.2-1: eNB initiated WT Release, successful operation

The eNB initiates the procedure by sending the WT RELEASE REQUEST message. Upon reception of the WT RELEASE REQUEST message the WT shall stop providing user data to the UE. The eNB may provide appropriate information within the *Cause IE*.

For each bearer for which the eNB requests forwarding of downlink data, the eNB includes the *DL Forwarding GTP Tunnel Endpoint IE* within the *E-RABs To Be Released Item IE* of the WT RELEASE REQUEST message to indicate that the WT should perform data forwarding of downlink packets for that bearer.

8.11.3 Unsuccessful Operation

Not applicable.

8.11.4 Abnormal Conditions

Not applicable.

8.12 WT Initiated WT Release

8.12.1 General

This procedure is triggered by the WT to initiate the release of the resources for a specific UE.

The procedure uses UE-associated signalling.

8.12.2 Successful Operation

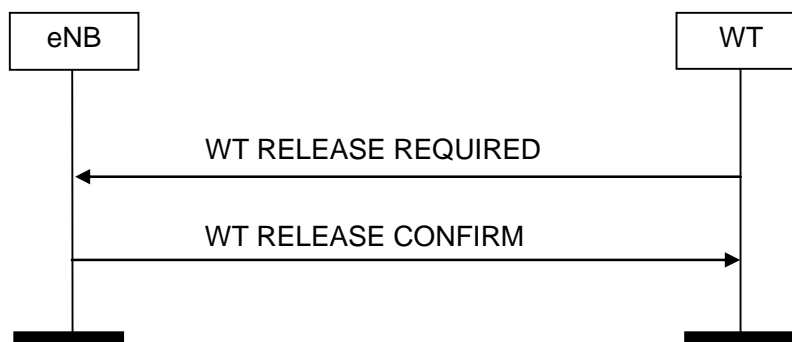


Figure 8.12.2-1: WT initiated WT Release, successful operation

The WT initiates the procedure by sending the WT RELEASE REQUIRED message to the eNB.

Upon reception of the WT RELEASE REQUIRED message, the eNB replies with the WT RELEASE CONFIRM message. For each E-RAB, the eNB may include the *DL Forwarding GTP Tunnel Endpoint IE* within the *E-RABs To Be Released Item IE* to indicate that it requests data forwarding of downlink packets to be performed for that bearer.

The WT may start data forwarding and stop providing user data to the UE upon reception of the WT RELEASE CONFIRM message.

8.12.3 Unsuccessful Operation

Not applicable.

8.12.4 Abnormal Conditions

Not applicable.

8.13 WT Association Confirmation

8.13.1 General

This procedure is initiated by the WT to give confirmation to the eNB that a certain UE successfully associated with the WLAN following a successful WT Addition Preparation procedure.

The procedure uses UE-associated signalling.

8.13.2 Successful Operation



Figure 8.13.2-1: WT Association Confirm procedure, successful operation

The WT initiates the procedure by sending the WT ASSOCIATION CONFIRMATION message to the eNB.

Upon reception of the WT ASSOCIATION CONFIRMATION message, the eNB shall consider that the UE is associated with the WLAN, and that user plane data for that UE may be sent to the WT.

8.13.3 Unsuccessful Operation

Not applicable.

8.13.4 Abnormal Conditions

Not applicable.

9 Elements for XwAP Communication

9.0 General

Sub clauses 9.1 and 9.2 describe the structure of the messages and information elements required for the XwAP protocol in tabular format. Sub clause 9.3 provides the corresponding ASN.1 definition.

The following attributes are used for the tabular description of the messages and information elements: Presence, Range Criticality and Assigned Criticality. Their definition and use can be found in TS 36.413 [8].

NOTE: The messages have been defined in accordance to the guidelines specified in TR 25.921 [12].

9.1 Message Functional Definition and Content

9.1.1 Xw SETUP REQUEST

This message is sent by an eNB to a WT to transfer the initialization information for a TNL association.

Direction: eNB → WT.

IE/Group Name	Presence	Range	IE type and reference	Semantics description	Criticality	Assigned Criticality
Message Type	M		9.2.1		YES	reject
Global eNB ID	M		9.2.2		YES	reject

9.1.2 Xw SETUP RESPONSE

This message is sent by a WT to a requesting eNB to transfer the initialization information for a TNL association.

Direction: WT → eNB.

IE/Group Name	Presence	Range	IE type and reference	Semantics description	Criticality	Assigned Criticality
Message Type	M		9.2.1		YES	reject
WT ID	M		9.2.6		YES	reject
WLAN Identifier List		1		List of identifiers supported by the WT	YES	reject
>WLAN Identifier Item		1..<maxnoofWLANIdentifierItems>				
>>WLAN Information	M		9.2.7			
Criticality Diagnostics	O		9.2.5		YES	ignore

Range bound	Explanation
maxnoofWLANIdentifierItems	Maximum number of WLAN Identifier Items. The value is 4096.

9.1.3 Xw SETUP FAILURE

This message is sent by the WT to indicate Xw Setup failure.

Direction: WT → eNB.

IE/Group Name	Presence	Range	IE type and reference	Semantics description	Criticality	Assigned Criticality
Message Type	M		9.2.1		YES	reject
Cause	M		9.2.4		YES	ignore
Criticality Diagnostics	O		9.2.5		YES	ignore

9.1.4 WT CONFIGURATION UPDATE

This message is sent by a WT to an eNB to transfer updated information for a TNL association.

Direction: WT → eNB.

IE/Group Name	Presence	Range	IE type and reference	Semantics description	Criticality	Assigned Criticality
Message Type	M		9.2.1		YES	reject
WLAN Identifiers To Add List		0..1		List of identifiers added by the WT	GLOBAL	reject
>WLAN Identifiers To Add Item		0..<maxnoofWLANIdentifierItems>				
>>WLAN Information	M		9.2.7			
WLAN Identifiers To Modify List		0..1		List of identifiers modified by the WT	GLOBAL	reject
>WLAN Identifiers To Modify Item		0..<maxnoofWLANIdentifierItems>				
>>WLAN Information	M		9.2.7			
WLAN Identifiers To Delete List		0..1		List of identifiers deleted by the WT	GLOBAL	reject
>WLAN Identifiers To Delete Item		0..<maxnoofBSSs>				
>>Old BSSID	M		BSSID 9.2.8			

Range bound	Explanation
maxnoofWLANIdentifierItems	Maximum number of WLAN Identifier Items. The value is 4096.
maxnoofBSSs	Maximum number of BSS Items in a list. The value is 4096.

9.1.5 WT CONFIGURATION UPDATE ACKNOWLEDGE

This message is sent by an eNB to a WT to acknowledge update of information for a TNL association.

Direction: eNB → WT.

IE/Group Name	Presence	Range	IE type and reference	Semantics description	Criticality	Assigned Criticality
Message Type	M		9.2.1		YES	reject
Criticality Diagnostics	O		9.2.5		YES	ignore

9.1.6 WT CONFIGURATION UPDATE FAILURE

This message is sent by an eNB to a WT to indicate WT Configuration Update Failure.

Direction: eNB → WT.

IE/Group Name	Presence	Range	IE type and reference	Semantics description	Criticality	Assigned Criticality
Message Type	M		9.2.1		YES	reject
Cause	M		9.2.4		YES	ignore
Criticality Diagnostics	O		9.2.5		YES	ignore

9.1.7 WT STATUS REQUEST

This message is sent by an eNB to a WT to initiate the requested measurement according to the parameters given in the message.

Direction: eNB → WT.

IE/Group Name	Presence	Range	IE type and reference	Semantics description	Criticality	Assigned Criticality
Message Type	M		9.2.1		YES	reject
eNB Measurement ID	M		INTEGER (1..4095,...)	Allocated by the eNB	YES	reject
WT Measurement ID	C- ifRegistrati onRequest Stop		INTEGER (1..4095,...)	Allocated by the WT	YES	ignore
Registration Request	M		ENUMERATED(start, stop, ...)	A value set to 'stop', indicates a request to stop all BSS measurements.	YES	reject
Report Characteristics	O		BITSTRING (SIZE(32))	Each position in the bitmap indicates measurement object the WT is requested to report. First Bit = BSS Load, Second Bit = WAN Metrics, Third bit = Available Channel Utilization. Other bits shall be ignored by the WT.	YES	reject
BSS To Report List		1		List of BSSs for which measurement is needed	YES	ignore
>BSS To Report Item		1 .. <maxnoofBSSs>			EACH	ignore
>>BSSID	M		9.2.8		–	–
Reporting Periodicity	O		ENUMERATED(10ms, 50ms, 100ms, 200ms, 500ms, 1s, 5s, 10s, ...)		YES	ignore
Partial Success Indicator	O		ENUMERATED(partial success allowed, ...)	Included if partial success is allowed	YES	ignore

Range bound	Explanation
maxnoofBSSs	Maximum number of BSS Items in a list. The value is 4096.

Condition	Explanation
ifRegistrationRequestStop	This IE shall be present if the <i>Registration Request</i> IE is set to the value 'stop'.

9.1.8 WT STATUS RESPONSE

This message is sent by the WT to indicate that the requested measurement, for all or for a subset of the measurement objects included in the measurement request, is successfully initiated.

Direction: WT → eNB.

IE/Group Name	Presence	Range	IE type and reference	Semantics description	Criticality	Assigned Criticality
Message Type	M		9.2.1		YES	reject
eNB Measurement ID	M		INTEGER (1..4095,...)	Allocated by the eNB	YES	reject
WT Measurement ID	M		INTEGER (1..4095,...)	Allocated by the WT	YES	reject
Measurement Initiation Result List		0..1		List of all BSSs in which measurement objects were requested, included when indicating partial success	YES	ignore
>Measurement Initiation Result Item		1 .. <maxnoofBSSs>			EACH	ignore
>>BSSID	M		9.2.8		–	–
>>Measurement Failure Cause List		0..1		Indicates that WT could not initiate the measurement for at least one of the requested measurement objects in the BSS	–	–
>>>Measurement Failure Cause Item		1 .. <maxnoofFailed MeasObjects>			EACH	ignore
>>>>Measurement Failed Report Characteristics	M		BITSTRING (SIZE(32))	Each position in the bitmap indicates measurement object that failed to be initiated in the WT. First Bit = BSS Load, Second Bit = WAN Metrics, Third Bit = Available Channel Utilization. Other bits shall be ignored by the eNB.	–	–
>>>>Cause	M		9.2.4	Failure cause for measurement objects for which the measurement cannot be initiated	–	–
Criticality Diagnostics	O		9.2.5		YES	ignore

Range bound	Explanation
maxnoofBSSs	Maximum number of BSSs Items in a list. The value is 4096.
maxnoofFailedMeasObjects	Maximum number of measurement objects that can fail per measurement. Value is 32.

9.1.9 WT STATUS FAILURE

This message is sent by the WT to indicate that none of the requested measurements can be initiated.

Direction: WT → eNB

IE/Group Name	Presence	Range	IE type and reference	Semantics description	Criticality	Assigned Criticality
Message Type	M		9.2.1		YES	reject
eNB Measurement ID	M		INTEGER (1..4095,...)	Allocated by the eNB	YES	reject
WT Measurement ID	M		INTEGER (1..4095,...)	Allocated by the WT	YES	reject
Complete Failure Cause Information List		0..1		Complete list of failure causes for all requested cells	YES	ignore
>Complete Failure Cause Information Item		1 .. <maxnoofBSSs>			EACH	ignore
>>BSSID	M		9.2.8		–	–
>>Measurement Failure Cause List		1			–	–
>>>Measurement Failure Cause Item		1 .. <maxnoofFailed MeasObjects>			EACH	ignore
>>>>Measurement Failed Report Characteristics	M		BITSTRING (SIZE(32))	Each position in the bitmap indicates measurement object that failed to be initiated in the WT. First Bit = BSS Load, Second Bit = WAN Metrics, Third Bit = Available Channel Utilization. Other bits shall be ignored by the eNB.	–	–
>>>>Cause	M		9.2.4	Failure cause for measurements that cannot be initiated	–	–
Cause	M		9.2.4	Ignored by the receiver when the <i>Complete Failure Cause Information</i> IE is included	YES	ignore
Criticality Diagnostics	O		9.2.5		YES	ignore

Range bound	Explanation
maxnoofBSSs	Maximum number of BSS Items in a list. The value is 4096.
maxnoofFailedMeasObjects	Maximum number of measurement objects that can fail per measurement. Value is 32.

9.1.10 WT STATUS REPORT

This message is sent by the WT to the eNB to report the results of the requested measurements.

Direction: WT → eNB.

IE/Group Name	Presence	Range	IE type and reference	Semantics description	Criticality	Assigned Criticality
Message Type	M		9.2.1		YES	ignore
eNB Measurement ID	M		INTEGER (1..4095,...)	Allocated by the eNB	YES	reject
WT Measurement ID	M		INTEGER (1..4095,...)	Allocated by the WT	YES	reject
BSS Measurement Result List		1			YES	ignore
>BSS Measurement Result Item		1 .. <maxnoofBSSs>			EACH	ignore
>>BSSID	M		9.2.8			
>>BSS Load	O		9.2.11			
>>WAN Metrics	O		9.2.12			
>>Available Channel Utilization	O		9.2.26			

Range bound	Explanation
maxnoofBSSs	Maximum number of BSS Items in a list. The value is 4096.

9.1.11 ERROR INDICATION

This message is used to indicate that some error has been detected in the originating node.

Direction: eNB → WT and WT → eNB.

IE/Group Name	Presence	Range	IE type and reference	Semantics description	Criticality	Assigned Criticality
Message Type	M		9.2.1		YES	ignore
eNB UE XwAP ID	O		UE XwAP ID 9.2.24	Assigned by the eNB	YES	ignore
WT UE XwAP ID	O		UE XwAP ID 9.2.24	Assigned by the WT	YES	ignore
Cause	O		9.2.4		YES	ignore
Criticality Diagnostics	O		9.2.5		YES	ignore

9.1.12 RESET

This message is used to request the Xw interface to be reset.

Direction: eNB → WT and WT → eNB.

IE/Group Name	Presence	Range	IE type and reference	Semantics description	Criticality	Assigned Criticality
Message Type	M		9.2.1		YES	reject
Cause	M		9.2.4		YES	ignore

9.1.13 RESET RESPONSE

This message is sent as a response to a RESET message.

Direction: WT → eNB and eNB → WT.

IE/Group Name	Presence	Range	IE type and reference	Semantics description	Criticality	Assigned Criticality
Message Type	M		9.2.1		YES	reject
Criticality Diagnostics	O		9.2.5		YES	ignore

9.1.14 WT ADDITION REQUEST

This message is sent by the eNB to the WT to request the preparation of resources for LTE-WLAN aggregation for a specific UE

Direction: eNB → WT.

IE/Group Name	Presence	Range	IE type and reference	Semantics description	Criticality	Assigned Criticality
Message Type	M		9.2.1		YES	reject
eNB UE XwAP ID	M		UE XwAP ID 9.2.24	Assigned by the eNB	YES	reject
UE Identity	M		9.2.16		YES	reject
WLAN Security Information	O		9.2.27		YES	reject
Serving PLMN	O		PLMN Identity 9.2.3	The serving PLMN for the UE.	YES	ignore
E-RABs To Be Added List		1			YES	reject
>E-RABs To Be Added Item		1 .. <maxnoof Bearers>			EACH	reject
>>E-RAB ID	M		9.2.18		–	–
>>E-RAB Level QoS Parameters	M		9.2.19	Includes necessary QoS parameters	–	–
>> eNB GTP Tunnel Endpoint	M		GTP Tunnel Endpoint 9.2.22	Endpoint of the Xw transport bearer at the eNB	–	–
Mobility Set	M		9.2.28		YES	reject

Range bound	Explanation
maxnoofBearers	Maximum no. of E-RABs. Value is 256

9.1.15 WT ADDITION REQUEST ACKNOWLEDGE

This message is sent by the WT to confirm the eNB about the WT addition preparation.

Direction: WT → eNB.

IE/Group Name	Presence	Range	IE type and reference	Semantics description	Criticality	Assigned Criticality
Message Type	M		9.2.1		YES	reject
eNB UE XwAP ID	M		UE XwAP ID 9.2.24	Assigned by the eNB	YES	ignore
WT UE XwAP ID	M		UE XwAP ID 9.2.24	Assigned by the WT	YES	ignore
E-RABs Admitted To Be Added List		1			YES	ignore
>E-RABs Admitted To Be Added Item		1 .. <maxnoof Bearers>			EACH	ignore
>>E-RAB ID	M		9.2.18		–	–
>>WT GTP Tunnel Endpoint	M		GTP Tunnel Endpoint 9.2.22	Endpoint of the Xw transport bearer at the WT.	–	–
E-RABs Not Admitted List	O		E-RAB List 9.2.23	A value for <i>E-RAB ID</i> shall only be present once in <i>E-RABs Admitted List</i> IE and in <i>E-RABs Not Admitted List</i> IE.	YES	ignore
Criticality Diagnostics	O		9.2.5		YES	ignore

Range bound	Explanation
maxnoofBearers	Maximum no. of E-RABs. Value is 256

9.1.16 WT ADDITION REQUEST REJECT

This message is sent by the WT to inform the eNB that the WT Addition Preparation has failed.

Direction: WT → eNB.

IE/Group Name	Presence	Range	IE type and reference	Semantics description	Criticality	Assigned Criticality
Message Type	M		9.2.1		YES	reject
eNB UE XwAP ID	M		UE XwAP ID 9.2.24	Assigned by the eNB	YES	ignore
Cause	M		9.2.4		YES	ignore
Criticality Diagnostics	O		9.2.5		YES	ignore

9.1.17 WT MODIFICATION REQUEST

This message is sent by the eNB to the WT to request the preparation to modify WT resources for a specific UE.

Direction: eNB → WT.

IE/Group Name	Presence	Range	IE type and reference	Semantics description	Criticality	Assigned Criticality
Message Type	M		9.2.1		YES	reject
eNB UE XwAP ID	M		UE XwAP ID 9.2.24	Assigned by the eNB	YES	reject
WT UE XwAP ID	M		UE XwAP ID 9.2.24	Assigned by the WT	YES	reject
Cause	M		9.2.4		YES	ignore
Serving PLMN	O		PLMN Identity 9.2.3	The serving PLMN for the UE.	YES	ignore
UE Context Information		<i>0..1</i>			YES	reject
>WLAN Security Information	O		9.2.27			
>E-RABs To Be Added List		<i>0..1</i>			–	–
>>E-RABs To Be Added Item		<i>1 .. <maxnoof Bearers></i>			EACH	ignore
>>>E-RAB ID	M		9.2.18		–	–
>>>E-RAB Level QoS Parameters	M		9.2.19	Includes necessary QoS parameters	–	–
>>> eNB GTP Tunnel Endpoint	M		GTP Tunnel Endpoint 9.2.22	Endpoint of the Xw transport bearer at the eNB	–	–
>E-RABs To Be Modified List		<i>0..1</i>			–	–
>>E-RABs To Be Modified Item		<i>1 .. <maxnoof Bearers></i>			EACH	ignore
>>>E-RAB ID	M		9.2.18		–	–
>>>E-RAB Level QoS Parameters	O		9.2.19	Includes QoS parameters to be modified	–	–
>>> eNB GTP Tunnel Endpoint	O		GTP Tunnel Endpoint 9.2.22	Endpoint of the Xw transport bearer at the eNB	–	–
>E-RABs To Be Released List		<i>0..1</i>			–	–
>>E-RABs To Be Released Item		<i>1 .. <maxnoof Bearers></i>			EACH	ignore
>>>E-RAB ID	M		9.2.18		–	–
>>>DL Forwarding GTP Tunnel Endpoint	O		GTP Tunnel Endpoint 9.2.22	Identifies the Xw transport bearer used for forwarding of DL PDUs	–	–
Mobility Set	O		9.2.28		YES	reject

Range bound	Explanation
maxnoofBearers	Maximum no. of E-RABs. Value is 256

9.1.18 WT MODIFICATION REQUEST ACKNOWLEDGE

This message is sent by the WT to confirm the eNB's request to modify the WT resources for a specific UE.

Direction: WT → eNB.

IE/Group Name	Presence	Range	IE type and reference	Semantics description	Criticality	Assigned Criticality
Message Type	M		9.2.1		YES	reject
eNB UE XwAP ID	M		UE XwAP ID 9.2.24	Assigned by the eNB	YES	ignore
WT UE XwAP ID	M		UE XwAP ID 9.2.24	Assigned by the WT	YES	ignore
E-RABs Admitted List		0..1			YES	ignore
>E-RABs Admitted To Be Added List		0..1			–	–
>>E-RABs Admitted To Be Added Item		1 .. <maxnoof Bearers>			EACH	ignore
>>>E-RAB ID	M		9.2.18		–	–
>>>WT GTP Tunnel Endpoint	M		GTP Tunnel Endpoint 9.2.22	Endpoint of the Xw transport bearer at the WT.	–	–
>E-RABs Admitted To Be Modified List		0..1			–	–
>>E-RABs Admitted To Be Modified Item		1 .. <maxnoof Bearers>			EACH	ignore
>>>E-RAB ID	M		9.2.18		–	–
>>>WT GTP Tunnel Endpoint	O		GTP Tunnel Endpoint 9.2.22	Endpoint of the Xw transport bearer at the WT.	–	–
>E-RABs Admitted To Be Released List		0..1			–	–
>>E-RABs Admitted To Be Released Item		1 .. <maxnoof Bearers>			EACH	ignore
>>>E-RAB ID	M		9.2.18		–	–
E-RABs Not Admitted List	O		E-RAB List 9.2.23	A value for <i>E-RAB ID</i> shall only be present once in <i>E-RABs Admitted List</i> IE and in <i>E-RABs Not Admitted List</i> IE.	YES	ignore
Criticality Diagnostics	O		9.2.5		YES	ignore

Range bound	Explanation
maxnoofBearers	Maximum no. of E-RABs. Value is 256

9.1.19 WT MODIFICATION REQUEST REJECT

This message is sent by the WT to inform the eNB that the eNB initiated WT Modification has failed.

Direction: WT → eNB.

IE/Group Name	Presence	Range	IE type and reference	Semantics description	Criticality	Assigned Criticality
Message Type	M		9.2.1		YES	reject
eNB UE XwAP ID	M		UE XwAP ID 9.2.24	Assigned by the eNB	YES	ignore
WT UE XwAP ID	M		UE XwAP ID 9.2.24	Assigned by the WT	YES	ignore
Cause	M		9.2.4		YES	ignore
Criticality Diagnostics	O		9.2.5		YES	ignore

9.1.20 WT MODIFICATION REQUIRED

This message is sent by the WT to the eNB to request the release or modification of LWA bearers for a specific UE.

Direction: WT → eNB.

IE/Group Name	Presence	Range	IE type and reference	Semantics description	Criticality	Assigned Criticality
Message Type	M		9.2.1		YES	reject
eNB UE XwAP ID	M		UE XwAP ID 9.2.24	Assigned by the eNB	YES	reject
WT UE XwAP ID	M		UE XwAP ID 9.2.24	Assigned by the WT	YES	reject
Cause	M		9.2.4		YES	ignore
E-RABs To Be Released List		0..1			YES	ignore
>E-RABs To Be Released Item		1 .. <maxnoof Bearers>			EACH	ignore
>>E-RAB ID	M		9.2.18		–	–
>>Cause	M		9.2.4		–	–
E-RABs To Be Modified List		0..1			–	–
>E-RABs To Be Modified Item		1 .. <maxnoof Bearers>			EACH	ignore
>>E-RAB ID	M		9.2.18		–	–
>>WT GTP Tunnel Endpoint	O		GTP Tunnel Endpoint 9.2.22	Endpoint of the Xw transport bearer at the WT	–	–

Range bound	Explanation
maxnoofBearers	Maximum no. of E-RABs. Value is 256

9.1.21 WT MODIFICATION CONFIRM

This message is sent by the eNB to inform the WT that the WT initiated WT Modification was successful.

Direction: eNB → WT.

IE/Group Name	Presence	Range	IE type and reference	Semantics description	Criticality	Assigned Criticality
Message Type	M		9.2.1		YES	reject
eNB UE XwAP ID	M		UE XwAP ID 9.2.24	Assigned by the eNB	YES	ignore
WT UE XwAP ID	M		UE XwAP ID 9.2.24	Assigned by the WT	YES	ignore
E-RABs Confirmed To Be Released List		0..1			–	–
>E-RABs Confirmed To Be Released Item		1 .. <maxnoof Bearers>			EACH	ignore
>>E-RAB ID	M		9.2.18		–	–
>>DL Forwarding GTP Tunnel Endpoint	O		GTP Tunnel Endpoint 9.2.22	Identifies the Xw transport bearer used for forwarding of DL PDUs	–	–
E-RABs Confirmed To Be Modified List		0..1			–	–
>E-RABs Confirmed To Be Modified Item		1 .. <maxnoof Bearers>			EACH	ignore
>>E-RAB ID	M		9.2.18		–	–
Criticality Diagnostics	O		9.2.5		YES	ignore

Range bound	Explanation
maxnoofBearers	Maximum no. of E-RABs. Value is 256

9.1.22 WT MODIFICATION REFUSE

This message is sent by the eNB to inform the WT that the WT initiated WT Modification has failed.

Direction: eNB → WT.

IE/Group Name	Presence	Range	IE type and reference	Semantics description	Criticality	Assigned Criticality
Message Type	M		9.2.1		YES	reject
eNB UE XwAP ID	M		UE XwAP ID 9.2.24	Assigned by the eNB	YES	ignore
WT UE XwAP ID	M		UE XwAP ID 9.2.24	Assigned by the WT	YES	ignore
Cause	M		9.2.4		YES	ignore
Criticality Diagnostics	O		9.2.5		YES	ignore

9.1.23 WT RELEASE REQUEST

This message is sent by the eNB to the WT to request the release of resources.

Direction: eNB → WT.

IE/Group Name	Presence	Range	IE type and reference	Semantics description	Criticality	Assigned Criticality
Message Type	M		9.2.1		YES	ignore
eNB UE XwAP ID	M		UE XwAP ID 9.2.24	Assigned by the eNB	YES	reject
WT UE XwAP ID	M		UE XwAP ID 9.2.24	Assigned by the WT	YES	reject
Cause	O		9.2.4		YES	ignore
E-RABs To Be Released List		0..1			YES	ignore
>E-RABs To Be Released Item		1 .. <maxnoof Bearers>			EACH	ignore
>>E-RAB ID	M		9.2.18		–	–
>>DL Forwarding GTP Tunnel Endpoint	O		GTP Tunnel Endpoint 9.2.22	Identifies the Xw transport bearer. used for forwarding of DL PDUs	–	–

Range bound	Explanation
maxnoofBearers	Maximum no. of E-RABs. Value is 256

9.1.24 WT RELEASE REQUIRED

This message is sent by the WT to request the release of all resources for a specific UE at the WT.

Direction: WT → eNB.

IE/Group Name	Presence	Range	IE type and reference	Semantics description	Criticality	Assigned Criticality
Message Type	M		9.2.1		YES	reject
eNB UE XwAP ID	M		UE XwAP ID 9.2.24	Assigned by the eNB	YES	reject
WT UE XwAP ID	M		UE XwAP ID 9.2.24	Assigned by the WT	YES	reject
Cause	M		9.2.4		YES	ignore

9.1.25 WT RELEASE CONFIRM

This message is sent by the eNB to confirm the release of all resources for a specific UE at the WT.

Direction: eNB → WT.

IE/Group Name	Presence	Range	IE type and reference	Semantics description	Criticality	Assigned Criticality
Message Type	M		9.2.1		YES	reject
eNB UE XwAP ID	M		UE XwAP ID 9.2.24	Assigned by the eNB	YES	ignore
WT UE XwAP ID	M		UE XwAP ID 9.2.24	Assigned by the WT	YES	ignore
E-RABs to be Released List		<i>0..1</i>			YES	ignore
>E-RABs To Be Released Item		<i>1 .. <maxnoof Bearers></i>			–	–
>>E-RAB ID	M		9.2.18		–	–
>>DL Forwarding GTP Tunnel Endpoint	O		GTP Tunnel Endpoint 9.2.22	Identifies the Xw transport bearer used for forwarding of DL PDUs	–	–
Criticality Diagnostics	O		9.2.5		YES	ignore

Range bound	Explanation
maxnoofBearers	Maximum no. of E-RABs. Value is 256

9.1.26 WT ASSOCIATION CONFIRMATION

This message is sent by the WT to the eNB to confirm that a certain UE successfully associated with the WLAN.

Direction: WT → eNB.

IE/Group Name	Presence	Range	IE type and reference	Semantics description	Criticality	Assigned Criticality
Message Type	M		9.2.1		YES	ignore
eNB UE XwAP ID	M		UE XwAP ID 9.2.24	Assigned by the eNB	YES	ignore
WT UE XwAP ID	M		UE XwAP ID 9.2.24	Assigned by the WT	YES	ignore

9.2 Information Element definitions

9.2.0 General

When specifying information elements which are to be represented by bit strings, if not otherwise specifically stated in the semantics description of the concerned IE or elsewhere, the following principle applies with regards to the ordering of bits:

- The first bit (leftmost bit) contains the most significant bit (MSB);
- The last bit (rightmost bit) contains the least significant bit (LSB);
- When importing bit strings from other specifications, the first bit of the bit string contains the first bit of the concerned information.

9.2.1 Message Type

This IE uniquely identifies the message being sent. It is mandatory for all messages.

IE/Group Name	Presence	Range	IE type and reference	Semantics description
Procedure Code	M		INTEGER (0..255)	"0" = Xw Setup "1" = WT Configuration Update "2" = WT Status Reporting Initiation "3" = WT Status Reporting "4" = Error Indication "5" = Reset "6" = WT Addition Preparation "7" = eNB Initiated WT Modification "8" = WT Initiated WT Modification "9" = eNB Initiated WT Release "10" = WT Initiated WT Release "11" = WT Association Confirmation "12" = Private Message
Type of Message	M		CHOICE (Initiating Message, Successful Outcome, Unsuccessful Outcome, ...)	

9.2.2 Global eNB ID

This IE is used to globally identify an eNB (see TS 36.401 [9]).

IE/Group Name	Presence	Range	IE type and reference	Semantics description
PLMN Identity	M		9.2.3	
CHOICE <i>eNB ID</i>	M			
> <i>Macro eNB ID</i>				
>>Macro eNB ID	M		BIT STRING (20)	Equal to the 20 leftmost bits of the value of the <i>E-UTRAN Cell Identifier</i> IE contained in the <i>ECGI</i> IE (see section 9.2.14) identifying each cell controlled by the eNB
> <i>Other eNB ID</i>				
>>Other eNB ID	M		Protocol IE Container	

9.2.3 PLMN Identity

This IE indicates the PLMN Identity.

IE/Group Name	Presence	Range	IE type and reference	Semantics description
PLMN Identity	M		OCTET STRING (SIZE(3))	<ul style="list-style-type: none">- digits 0 to 9, encoded 0000 to 1001,- 1111 used as filler digit, two digits per octet,- bits 4 to 1 of octet n encoding digit 2n-1- bits 8 to 5 of octet n encoding digit 2n <p>-The PLMN identity consists of 3 digits from MCC followed by either</p> <ul style="list-style-type: none">-a filler digit plus 2 digits from MNC (in case of 2 digit MNC)or-3 digits from MNC (in case of a 3 digit MNC).

9.2.4 Cause

The purpose of this IE is to indicate the reason for a particular event for the whole protocol.

IE/Group Name	Presence	Range	IE Type and Reference	Semantics Description
CHOICE Cause Group	M			
>Radio Network Layer				
>>Radio Network Layer Cause	M		ENUMERATED (Unknown eNB UE XwAP ID, Unknown WT UE XwAP ID, Unknown Pair of UE XwAP ID, WLAN not Available, Security Failure, ReportCharacteristicsEmpty, ExistingMeasurement ID, Unknown Measurement ID, Measurement Temporarily not Available, Unspecified, Multiple E-RAB ID instances, Switch Off Ongoing, Not supported QCI value, Measurement not supported for the object, Reduce Load, Resource Optimisation, Target not Allowed, No Radio Resources Available, Invalid QoS combination, Procedure cancelled, Radio Connection With UE Lost, Failure in the Radio Interface Procedure,...)	
>Transport Layer				
>>Transport Layer Cause	M		ENUMERATED (Transport Resource Unavailable, Unspecified,...)	
>Protocol				
>>Protocol Cause	M		ENUMERATED (Transfer Syntax Error, Abstract Syntax Error (Reject), Abstract Syntax Error (Ignore and Notify), Message not Compatible with Receiver State, Semantic Error, Unspecified, Abstract Syntax Error (Falsely Constructed Message),...)	
>Misc				
>>Miscellaneous Cause	M		ENUMERATED (Control Processing Overload, Hardware Failure, O&M Intervention, Not enough User Plane Processing Resources, Unspecified,...)	

The meaning of the different cause values is described in the following table. In general, "not supported" cause values indicate that the concerned capability is missing. On the other hand, "not available" cause values indicate that the concerned capability is present, but insufficient resources were available to perform the requested action.

Radio Network Layer cause	Meaning
WLAN not Available	The concerned WLAN is not available.
Unknown eNB UE XwAP ID	The action failed because the eNB UE XwAP ID is unknown.
Unknown WT UE XwAP ID	The action failed because the WT UE XwAP ID is unknown.
Unknown Pair of UE XwAP ID	The action failed because the pair of UE XwAP IDs is unknown.
Security Failure	The action is requested (or a previous request by the receiving node failed) due to a failure in security procedures.
ReportCharacteristicsEmpty	The action failed because there is no characteristic reported.
Existing Measurement ID	The action failed because Measurement ID is already used.
Unknown Measurement ID	The action failed because some eNB or WT Measurement ID is unknown.
Measurement Temporarily not Available	The WT can temporarily not provide the requested measurement object.
Multiple E-RAB ID Instances	The action failed because multiple instances of the same E-RAB had been provided to the WT.
Switch Off Ongoing	The reason for the action is an ongoing switch off i.e. either the sending node, or nodes whose actions the sending node triggers or monitors, will be switched off and not be available. It aids the receiving node in taking subsequent actions.
Not supported QCI value	The action failed because the requested QCI is not supported.
Unspecified	Sent when none of the above cause values applies but still the cause is Radio Network Layer related.
Measurement not Supported For The Object	At least one of the concerned cell(s) does not support the requested measurement.
Reduce Load	The action is requested in order to reduce load in an element controlled by the sending node.
Resource Optimisation	The reason for requesting this action is to improve the load distribution.
Target not Allowed	Requested action towards the indicated target is not allowed for the UE in question.
No Radio Resources Available	The action failed because of insufficient radio resources in the requested node.
Invalid QoS combination	The action was failed because of invalid QoS combination.
Procedure cancelled	The sending node cancelled the procedure due to other urgent actions to be performed.
Radio Connection With UE Lost	The action is requested due to losing the radio connection to the UE.
Failure in the Radio Interface Procedure	Radio interface procedure has failed.

Transport Network Layer cause	Meaning
Transport resource unavailable	The required transport resources are not available.
Unspecified	Sent when none of the above cause values applies but still the cause is Transport Network Layer related

Protocol cause	Meaning
Abstract Syntax Error (Reject)	The received message included an abstract syntax error and the concerned criticality indicated "reject" (see sub clause 10.3 of TS 36.413 [8]).
Abstract Syntax Error (Ignore and Notify)	The received message included an abstract syntax error and the concerned criticality indicated "ignore and notify" (see sub clause 10.3 of TS 36.413 [8]).
Abstract Syntax Error (falsely constructed message)	The received message contained IEs or IE groups in wrong order or with too many occurrences (see sub clause 10.3 of TS 36.413 [8]).
Message not Compatible with Receiver State	The received message was not compatible with the receiver state (see sub clause 10.4 of TS 36.413 [8]).
Semantic Error	The received message included a semantic error (see sub clause 10.4 of TS 36.413 [8]).
Transfer Syntax Error	The received message included a transfer syntax error (see sub clause 10.2 of TS 36.413 [8]).
Unspecified	Sent when none of the above cause values applies but still the cause is Protocol related

Miscellaneous cause	Meaning
Control Processing Overload	eNB or WT control processing overload
Hardware Failure	eNB or WT hardware failure
Not enough User Plane Processing Resources	eNB or WT has insufficient user plane processing resources available.
O&M Intervention	Operation and Maintenance intervention
Unspecified	Sent when none of the above cause values applies and the cause is not related to any of the categories Radio Network Layer, Transport Network Layer or Protocol

9.2.5 Criticality Diagnostics

The *Criticality Diagnostics* IE is sent by the eNB and the WT when parts of a received message have not been comprehended or were missing, or if the message contained logical errors. When applicable, it contains information about which IEs were not comprehended or were missing.

IE/Group Name	Presence	Range	IE type and reference	Semantics description
Procedure Code	O		INTEGER (0..255)	Procedure Code is to be used if Criticality Diagnostics is part of Error Indication procedure, and not within the response message of the same procedure that caused the error.
Triggering Message	O		ENUMERATED(initiating message, successful outcome, unsuccessful outcome)	The Triggering Message is used only if the Criticality Diagnostics is part of Error Indication procedure.
Procedure Criticality	O		ENUMERATED(reject, ignore, notify)	This Procedure Criticality is used for reporting the Criticality of the Triggering message (Procedure).
Information Element Criticality Diagnostics		<i>0..<maxnoofErrors></i>		
>IE Criticality	M		ENUMERATED(reject, ignore, notify)	The IE Criticality is used for reporting the criticality of the triggering IE. The value "ignore" shall not be used.
>IE ID	M		INTEGER (0..65535)	The IE ID of the not understood or missing IE
>Type Of Error	M		ENUMERATED(not understood, missing, ...)	

Range bound	Explanation
maxnoofErrors	Maximum no. of IE errors allowed to be reported with a single message. The value for maxnooferrors is 256.

9.2.6 WT ID

This IE is used to identify a WT.

IE/Group Name	Presence	Range	IE type and reference	Semantics description
CHOICE <i>WT ID Type</i>	M			
> <i>WT ID Type 1</i>				
>>PLMN ID	M		PLMN Identity 9.2.3	
>>Short WT ID	M		BIT STRING (24)	
> <i>WT ID Type 2</i>				
>>Long WT ID	M		BIT STRING (48)	

9.2.7 WLAN Information

This IE contains WLAN configuration information that an eNB may need for the Xw interface. It shall contain at least one of the *BSSID*, the *SSID*, and/or the *HESSID* IEs.

IE/Group Name	Presence	Range	IE type and reference	Semantics description	Criticality	Assigned Criticality
BSS Item	O					
>BSSID	M		9.2.8			
>WLAN Operating Class	O		INTEGER (0..255)	Indicates the Operating Class of WLAN as defined in IEEE 802.11™ [11].		
>WLAN Country Code	O		ENUMERATED (unitedStates, europe, japan, global, ...)	Indicates the country code of WLAN as defined in IEEE 802.11™ [11].		
>Maximum Capacity	O		Bit Rate 9.2.17	The maximum supported data rate corresponding to this BSSID.		
>WLAN Band Information List		0..1				
>>WLAN Band Information Item		1..<maxno ofBands>			EACH	ignore
>>>WLAN Band Information			9.2.13			
SSID	O		9.2.9			
HESSID	O		9.2.10			

Range bound	Explanation
maxnoofBands	Maximum number of WLAN Band Information Items per BSSID. The value of maxnoofBands is 256.

9.2.8 BSSID

This IE contains the BSSID.

IE/Group Name	Presence	Range	IE type and reference	Semantics description
BSSID	M		OCTET STRING (SIZE(6))	Includes the BSSID field as defined in subclause 8.2.4.3.4 of IEEE 802.11™ [11].

9.2.9 SSID

This IE contains the SSID.

IE/Group Name	Presence	Range	IE type and reference	Semantics description
SSID	M		OCTET STRING (SIZE(1..32))	Includes the SSID field as defined in subclause 8.4.2.2 of IEEE 802.11™ [11].

9.2.10 HESSID

This IE contains the HESSID.

IE/Group Name	Presence	Range	IE type and reference	Semantics description
HESSID	M		OCTET STRING (SIZE(6))	Includes the HESSID field as defined in subclause 8.4.2.94 of IEEE 802.11™ [11].

9.2.11 BSS Load

This IE contains the BSS Load.

IE/Group Name	Presence	Range	IE type and reference	Semantics description
Channel Utilization	M		9.2.14	Channel Utilization field of the BSS Load element defined in subclause 8.4.2.30 of IEEE 802.11™ [11].
Station Count	O		9.2.25	The <i>stationcount</i> field of the BSS Load element defined in subclause 8.4.2.30 of IEEE 802.11™ [11].

9.2.12 WAN Metrics

This IE contains the WAN Metrics.

IE/Group Name	Presence	Range	IE type and reference	Semantics description
WLAN Backhaul Rate DL	M		WLAN Backhaul Rate 9.2.15	Downlink Speed field of the WAN Metrics element defined in subclause 4.4 of Hotspot 2.0 (Release 2) [10]
WLAN Backhaul Rate UL	M		WLAN Backhaul Rate 9.2.15	Uplink Speed field of the WAN Metrics element defined in subclause 4.4 of Hotspot 2.0 (Release 2) [10]
WAN Channel Utilization DL	M		Channel Utilization 9.2.14	Downlink Load field of the WAN Metrics element defined in subclause 4.4 of Hotspot 2.0 (Release 2) [10]
WAN Channel Utilization UL	M		Channel Utilization 9.2.14	Uplink Load field of the WAN Metrics element defined in subclause 4.4 of Hotspot 2.0 (Release 2) [10]

9.2.13 WLAN Band Information

This IE describes the WLAN band information.

IE/Group Name	Presence	Range	IE type and reference	Semantics description
CHOICE <i>WLAN Band Information</i>				
> <i>Band</i>				
>>WLAN Band	M		ENUMERATED (band2dot4, band5, ...)	Indicates the band of the WLAN as defined in IEEE 802.11™ [11].
> <i>Channel Number</i>				
>>WLAN Channel Number	M		INTEGER (0..255)	Indicates the channel number of the WLAN channel as defined in IEEE 802.11™ [11].

9.2.14 Channel Utilization

This IE indicates the utilization level of a channel.

IE/Group Name	Presence	Range	IE type and reference	Semantics description
Channel Utilization	M		INTEGER (0..255)	

9.2.15 WLAN Backhaul Rate

This IE identifies a WLAN Backhaul Rate.

IE/Group Name	Presence	Range	IE type and reference	Semantics description
WLAN Backhaul Rate	M		ENUMERATED (r0, r4, r8, r16, r32, r64, r128, r256, r512, r1024, r2048, r4096, r8192, r16384, r32768, r65536, r131072, r262144, r524288, r1048576, r2097152, r4194304, r8388608, r16777216, r33554432, r67108864, r134217728, r268435456, r536870912, r1073741824, r2147483648, r4294967296)	

9.2.16 UE Identity

This IE represents the WLAN MAC address of the UE.

IE/Group Name	Presence	Range	IE type and reference	Semantics description
UE Identity	M		OCTET STRING (SIZE(6))	This corresponds to the WLAN MAC address of the UE

9.2.17 Bit Rate

This IE indicates the number of bits delivered within a period of time, divided by the duration of the period. It is used, for example, to indicate the maximum or guaranteed bit rate for a GBR E-RAB.

IE/Group Name	Presence	Range	IE type and reference	Semantics description
Bit Rate	M		INTEGER (0..10,000,000,000)	The unit is: bit/s

9.2.18 E-RAB ID

This IE uniquely identifies an E-RAB for a UE.

IE/Group Name	Presence	Range	IE type and reference	Semantics description
E-RAB ID	M		INTEGER (0..15, ...)	

9.2.19 E-RAB Level QoS Parameters

This IE defines the QoS to be applied to an E-RAB.

IE/Group Name	Presence	Range	IE type and reference	Semantics description	Criticality	Assigned Criticality
QCI	M		INTEGER (0..255)	QoS Class Identifier defined in TS 23.401 [14]. Logical range and coding specified in TS 23.203 [13].	–	–
Allocation and Retention Priority	M		9.2.20		–	–
GBR QoS Information	O		9.2.21	This IE applies to GBR bearers only and shall be ignored otherwise.	–	–

9.2.20 Allocation and Retention Priority

This IE specifies the relative importance compared to other E-RABs for allocation and retention of the E-UTRAN Radio Access Bearer.

IE/Group Name	Presence	Range	IE type and reference	Semantics description
Priority Level	M		INTEGER (0..15)	Desc.: This IE should be understood as 'priority of allocation and retention' (see TS 23.401 [14]). Usage: Value 15 means 'no priority'. Values between 1 and 14 are ordered in decreasing order of priority, i.e. 1 is the highest and 14 the lowest. Value 0 shall be treated as a logical error if received.
Pre-emption Capability	M		ENUMERATED(sh all not trigger pre-emption, may trigger pre-emption)	Descr.: This IE indicates the pre-emption capability of the request on other E-RABs Usage: The E-RAB shall not pre-empt other E-RABs or, the E-RAB may pre-empt other E-RABs The Pre-emption Capability indicator applies to the allocation of resources for an E-RAB and as such it provides the trigger to the pre-emption procedures/processes of the eNB.
Pre-emption Vulnerability	M		ENUMERATED(not pre-emptable, pre-emptable)	Desc.: This IE indicates the vulnerability of the E-RAB to pre-emption of other E-RABs. Usage: The E-RAB shall not be pre-empted by other E-RABs or the E-RAB may be pre-empted by other RABs. Pre-emption Vulnerability indicator applies to the entire duration of the E-RAB, unless modified, and as such indicates whether the E-RAB is a target of the pre-emption procedures/processes of the eNB.

9.2.21 GBR QoS Information

This IE indicates the maximum and guaranteed bit rates of a GBR E-RAB for downlink.

NOTE: The WT shall regard the *GBR QoS Information* IE as an E-RAB level parameter for E-RABs configured with the LWA bearer, although the bit rates signalled by the eNB are typically not equal to the bit rates signalled by the MME for that E-RAB (see TS 36.300 [2]).

IE/Group Name	Presence	Range	IE type and reference	Semantics description	Criticality	Assigned Criticality
E-RAB Maximum Bit Rate Downlink	M		Bit Rate 9.2.17	Maximum Bit Rate in DL (i.e. from EPC to E-UTRAN) for the bearer. Details in TS 23.401 [14].	–	–
E-RAB Guaranteed Bit Rate Downlink	M		Bit Rate 9.2.17	Guaranteed Bit Rate (provided that there is data to deliver) in DL (i.e. from EPC to E-UTRAN) for the bearer. Details in TS 23.401 [14].	–	–

9.2.22 GTP Tunnel Endpoint

The *GTP Tunnel Endpoint* IE identifies an Xw transport bearer associated to an E-RAB. It contains a Transport Layer Address and a GTP Tunnel Endpoint Identifier. The Transport Layer Address is an IP address to be used for the Xw user plane transport (see TS 36.464 [15]). The GTP Tunnel Endpoint Identifier is to be used for the user plane transport between the eNB and the WT.

IE/Group Name	Presence	Range	IE type and reference	Semantics description	Criticality	Assigned Criticality
Transport Layer Address	M		BIT STRING (1..160, ...)	For details on the Transport Layer Address, see TS 36.464 [15]	–	–
GTP TEID	M		OCTET STRING (4)	For details and range, see TS 29.281 [16]	–	–

9.2.23 E-RAB List

The IE contains a list of E-RAB identities with a cause value. It is used for example to indicate not admitted bearers.

IE/Group Name	Presence	Range	IE type and reference	Semantics description	Criticality	Assigned Criticality
E-RAB List Item		<i>1..<maxnoofBearers></i>			EACH	ignore
>E-RAB ID	M		9.2.18		–	–
>Cause	M		9.2.4		–	–

Range bound	Explanation
maxnoofBearers	Maximum no. of E-RABs. Value is 256.

9.2.24 UE XwAP ID

This information element uniquely identifies a UE over the Xw interface.

The eNB UE XwAP ID is allocated by the eNB, and the WT UE XwAP ID is allocated by the WT.

IE/Group Name	Presence	Range	IE type and reference	Semantics description
UE XwAP ID	M		OCTET STRING (SIZE(3))	

9.2.25 Station Count

The *Station Count* IE indicates the total number of stations associated with the BSS.

IE/Group Name	Presence	Range	IE type and reference	Semantics description
Station Count	M		INTEGER (0..65535)	Defined in subclause 8.4.2.30 of IEEE 802.11™ [11]

9.2.26 Available Channel Utilization

The *Available Channel Utilization* IE indicates the amount of WLAN channel utilization time that is available for LWA services relative to the total channel busy time period, as defined in [11]. The available channel utilization should be measured and reported so that the minimum channel utilization time needed for existing services is reserved according to implementation.

IE/Group Name	Presence	Range	IE type and reference	Semantics description	Criticality	Assigned Criticality
Capacity Value	M		INTEGER (0..100)	Value 0 shall indicate no available channel utilization time, and 100 shall indicate that all the channel utilization time is available. Available Channel Utilization should be measured on a linear scale.	-	-

9.2.27 WLAN Security Information

The *WLAN Security Information* IE is used to establish WLAN security as defined in TS 33.401 [17].

IE/Group Name	Presence	Range	IE Type and Reference	Semantics Description
WT Security Key	M		BIT STRING (SIZE(256))	The S-K _{WT} which is provided by the eNB, see TS 33.401 [17].

9.2.28 Mobility Set

The *Mobility Set* IE contains the mobility set configured for a UE, as defined in TS 36.300 [2]. It shall contain at least one of the *BSSID*, the *SSID*, and/or the *HESSID* IEs.

IE/Group Name	Presence	Range	IE type and reference	Semantics description
Mobility Set Item		<i>1..<maxnoofMobilitySetItems></i>		
>BSSID	O		9.2.8	
>SSID	O		9.2.9	
>HESSID	O		9.2.10	

Range bound	Explanation
maxnoofMobilitySetItems	Maximum number of mobility set items in the Mobility Set. The value is 1024.

9.3 Message and Information Element Abstract Syntax (with ASN.1)

9.3.1 General

XwAP ASN.1 definition conforms to ITU-T Rec. X.680 [6] and ITU-T Rec. X.681 [7].

Sub clause 9.3 presents the Abstract Syntax of the XwAP protocol with ASN.1. In case there is contradiction between the ASN.1 definition in this sub clause and the tabular format in sub clause 9.1 and 9.2, the ASN.1 shall take precedence, except for the definition of conditions for the presence of conditional elements, in which the tabular format shall take precedence.

The ASN.1 definition specifies the structure and content of XwAP messages. XwAP messages can contain any IEs specified in the object set definitions for that message without the order or number of occurrence being restricted by ASN.1. However, for this version of the standard, a sending entity shall construct an XwAP message according to the PDU definitions module and with the following additional rules:

- IEs shall be ordered (in an IE container) in the order they appear in object set definitions.
- Object set definitions specify how many times IEs may appear. An IE shall appear exactly once if the presence field in an object has value "mandatory". An IE may appear at most once if the presence field in an object has value "optional" or "conditional". If in a tabular format there is multiplicity specified for an IE (i.e. an IE list) then in the corresponding ASN.1 definition the list definition is separated into two parts. The first part defines an IE container list in which the list elements reside. The second part defines list elements. The IE container list appears as an IE of its own. For this version of the standard an IE container list may contain only one kind of list elements.

NOTE: In the above, "IE" means an IE in the object set with an explicit ID. If one IE needs to appear more than once in one object set, then the different occurrences have different IE IDs.

If an XwAP message that is not constructed as defined above is received, this shall be considered as Abstract Syntax Error, and the message shall be handled as defined for Abstract Syntax Error in clause 10.

9.3.2 Usage of Private Message Mechanism for Non-standard Use

The private message mechanism for non-standard use may be used:

- for special operator (and/or vendor) specific features considered not to be part of the basic functionality, i.e. the functionality required for a complete and high-quality specification in order to guarantee multivendor inter-operability.
- by vendors for research purposes, e.g. to implement and evaluate new algorithms/features before such features are proposed for standardisation.

The private message mechanism shall not be used for basic functionality. Such functionality shall be standardised.

9.3.3 Elementary Procedure Definitions

-- *****

```
--
-- Elementary Procedure definitions for XwAP
--
-- *****

XwAP-PDU-Descriptions {
itu-t (0) identified-organization (4) etsi (0) mobileDomain (0)
eps-Access (21) modules (3) xwap (8) version1 (1) xwap-PDU-Descriptions (0)}

DEFINITIONS AUTOMATIC TAGS ::=

BEGIN

-- *****
--
-- IE parameter types from other modules
--
-- *****

IMPORTS
    Criticality,
    ProcedureCode

FROM XwAP-CommonDataTypes

    ErrorIndication,
    PrivateMessage,
    Reset,
    ResetResponse,
    XwSetupRequest,
    XwSetupResponse,
    XwSetupFailure,
    WtAdditionRequest,
    WtAdditionRequestAcknowledge,
    WtAdditionRequestReject,
    WtAssociationConfirmation,
    WtConfigurationUpdate,
    WtConfigurationUpdateAcknowledge,
    WtConfigurationUpdateFailure,
    WtModificationRequest,
    WtModificationRequestAcknowledge,
    WtModificationRequestReject,
    WtModificationRequired,
    WtModificationConfirm,
    WtModificationRefuse,
    WtReleaseRequest,
    WtReleaseRequired,
    WtReleaseConfirm,
    WtStatusRequest,
    WtStatusResponse,
    WtStatusFailure,
    WtStatusReport
```

```

FROM XwAP-PDU-Contents

    id-eNBInitiatedWTModification,
    id-eNBInitiatedWTRelease,
    id-errorIndication,
    id-privateMessage,
    id-reset,
    id-xwSetup,
    id-wTAdditionPreparation,
    id-wTAssociationConfirmation,
    id-wTConfigurationUpdate,
    id-wTInitiatedWTModification,
    id-wTInitiatedWTRelease,
    id-wTStatusReporting,
    id-wTStatusReportingInitiation

FROM XwAP-Constants;

-- *****
--
-- Interface Elementary Procedure Class
--
-- *****

XWAP-ELEMENTARY-PROCEDURE ::= CLASS {
    &InitiatingMessage          ,
    &SuccessfulOutcome          OPTIONAL,
    &UnsuccessfulOutcome        OPTIONAL,
    &procedureCode              ProcedureCode UNIQUE,
    &criticality                 Criticality   DEFAULT ignore
}
WITH SYNTAX {
    INITIATING MESSAGE          &InitiatingMessage
    [SUCCESSFUL OUTCOME         &SuccessfulOutcome]
    [UNSUCCESSFUL OUTCOME       &UnsuccessfulOutcome]
    PROCEDURE CODE              &procedureCode
    [CRITICALITY                &criticality]
}

-- *****
--
-- Interface PDU Definition
--
-- *****

XwAP-PDU ::= CHOICE {
    initiatingMessage    InitiatingMessage,
    successfulOutcome    SuccessfulOutcome,
    unsuccessfulOutcome  UnsuccessfulOutcome,
    ...
}

InitiatingMessage ::= SEQUENCE {

```

```

    procedureCode    XWAP-ELEMENTARY-PROCEDURE.&procedureCode    ( {XWAP-ELEMENTARY-PROCEDURES} ),
    criticality      XWAP-ELEMENTARY-PROCEDURE.&criticality      ( {XWAP-ELEMENTARY-PROCEDURES}{@procedureCode} ),
    value           XWAP-ELEMENTARY-PROCEDURE.&InitiatingMessage ( {XWAP-ELEMENTARY-PROCEDURES}{@procedureCode} )
}

SuccessfulOutcome ::= SEQUENCE {
    procedureCode    XWAP-ELEMENTARY-PROCEDURE.&procedureCode    ( {XWAP-ELEMENTARY-PROCEDURES} ),
    criticality      XWAP-ELEMENTARY-PROCEDURE.&criticality      ( {XWAP-ELEMENTARY-PROCEDURES}{@procedureCode} ),
    value           XWAP-ELEMENTARY-PROCEDURE.&SuccessfulOutcome ( {XWAP-ELEMENTARY-PROCEDURES}{@procedureCode} )
}

UnsuccessfulOutcome ::= SEQUENCE {
    procedureCode    XWAP-ELEMENTARY-PROCEDURE.&procedureCode    ( {XWAP-ELEMENTARY-PROCEDURES} ),
    criticality      XWAP-ELEMENTARY-PROCEDURE.&criticality      ( {XWAP-ELEMENTARY-PROCEDURES}{@procedureCode} ),
    value           XWAP-ELEMENTARY-PROCEDURE.&UnsuccessfulOutcome ( {XWAP-ELEMENTARY-PROCEDURES}{@procedureCode} )
}

-- *****
--
-- Interface Elementary Procedure List
--
-- *****

XWAP-ELEMENTARY-PROCEDURES XWAP-ELEMENTARY-PROCEDURE ::= {
    XWAP-ELEMENTARY-PROCEDURES-CLASS-1
    XWAP-ELEMENTARY-PROCEDURES-CLASS-2,
    ...
}

XWAP-ELEMENTARY-PROCEDURES-CLASS-1 XWAP-ELEMENTARY-PROCEDURE ::= {
    xwSetup
    wTConfigurationUpdate
    wTStatusReportingInitiation
    reset
    wTAdditionPreparation
    eNBInitiatedWTModification
    wTInitiatedWTModification
    wTInitiatedWTRelease
    ,
    ...
}

XWAP-ELEMENTARY-PROCEDURES-CLASS-2 XWAP-ELEMENTARY-PROCEDURE ::= {
    wTStatusReporting
    errorIndication
    eNBInitiatedWTRelease
    wTAssociationConfirmation
    privateMessage
    ,
    ...
}

-- *****
--

```

```

-- Interface Elementary Procedures
--
-- *****

xwSetup                XWAP-ELEMENTARY-PROCEDURE ::= {
  INITIATING MESSAGE   XwSetupRequest
  SUCCESSFUL OUTCOME    XwSetupResponse
  UNSUCCESSFUL OUTCOME XwSetupFailure
  PROCEDURE CODE        id-xwSetup
  CRITICALITY           reject
}

wtConfigurationUpdate  XWAP-ELEMENTARY-PROCEDURE ::= {
  INITIATING MESSAGE   WTConfigurationUpdate
  SUCCESSFUL OUTCOME    WTConfigurationUpdateAcknowledge
  UNSUCCESSFUL OUTCOME WTConfigurationUpdateFailure
  PROCEDURE CODE        id-wtConfigurationUpdate
  CRITICALITY           reject
}

wtStatusReportingInitiation XWAP-ELEMENTARY-PROCEDURE ::= {
  INITIATING MESSAGE   WTStatusRequest
  SUCCESSFUL OUTCOME    WTStatusResponse
  UNSUCCESSFUL OUTCOME WTStatusFailure
  PROCEDURE CODE        id-wtStatusReportingInitiation
  CRITICALITY           reject
}

wtStatusReporting      XWAP-ELEMENTARY-PROCEDURE ::= {
  INITIATING MESSAGE   WTStatusReport
  PROCEDURE CODE        id-wtStatusReporting
  CRITICALITY           ignore
}

errorIndication        XWAP-ELEMENTARY-PROCEDURE ::= {
  INITIATING MESSAGE   ErrorIndication
  PROCEDURE CODE        id-errorIndication
  CRITICALITY           ignore
}

reset                  XWAP-ELEMENTARY-PROCEDURE ::= {
  INITIATING MESSAGE   Reset
  SUCCESSFUL OUTCOME    ResetResponse
  PROCEDURE CODE        id-reset
  CRITICALITY           reject
}

wtAdditionPreparation  XWAP-ELEMENTARY-PROCEDURE ::= {
  INITIATING MESSAGE   WTAdditionRequest
  SUCCESSFUL OUTCOME    WTAdditionRequestAcknowledge
  UNSUCCESSFUL OUTCOME WTAdditionRequestReject
  PROCEDURE CODE        id-wtAdditionPreparation
  CRITICALITY           reject
}

```

```

eNBInitiatedWTModification  XWAP-ELEMENTARY-PROCEDURE ::= {
  INITIATING MESSAGE      WTModificationRequest
  SUCCESSFUL OUTCOME      WTModificationRequestAcknowledge
  UNSUCCESSFUL OUTCOME   WTModificationRequestReject
  PROCEDURE CODE          id-eNBInitiatedWTModification
  CRITICALITY             reject
}

wTInitiatedWTModification   XWAP-ELEMENTARY-PROCEDURE ::= {
  INITIATING MESSAGE      WTModificationRequired
  SUCCESSFUL OUTCOME      WTModificationConfirm
  UNSUCCESSFUL OUTCOME   WTModificationRefuse
  PROCEDURE CODE          id-wTInitiatedWTModification
  CRITICALITY             reject
}

eNBInitiatedWTRelease      XWAP-ELEMENTARY-PROCEDURE ::= {
  INITIATING MESSAGE      WTReleaseRequest
  PROCEDURE CODE          id-eNBInitiatedWTRelease
  CRITICALITY             ignore
}

wTInitiatedWTRelease       XWAP-ELEMENTARY-PROCEDURE ::= {
  INITIATING MESSAGE      WTReleaseRequired
  SUCCESSFUL OUTCOME      WTReleaseConfirm
  PROCEDURE CODE          id-wTInitiatedWTRelease
  CRITICALITY             reject
}

wTAssociationConfirmation  XWAP-ELEMENTARY-PROCEDURE ::= {
  INITIATING MESSAGE      WTAssociationConfirmation
  PROCEDURE CODE          id-wTAssociationConfirmation
  CRITICALITY             ignore
}

privateMessage             XWAP-ELEMENTARY-PROCEDURE ::= {
  INITIATING MESSAGE      PrivateMessage
  PROCEDURE CODE          id-privateMessage
  CRITICALITY             ignore
}

END

```

9.3.4 PDU Definitions

```

-- *****
--
-- PDU definitions for XwAP.
--
-- *****

```

```
XwAP-PDU-Contents {  
itu-t (0) identified-organization (4) etsi (0) mobileDomain (0)  
eps-Access (21) modules (3) xwap (8) version1 (1) xwap-PDU-Contents (1) }
```

```
DEFINITIONS AUTOMATIC TAGS ::=
```

```
BEGIN
```

```
-- *****  
--  
-- IE parameter types from other modules.  
--  
-- *****
```

```
IMPORTS
```

```
    BSSMeasurementResult-List,  
    BSSToReport-List,  
    Cause,  
    CompleteFailureCauseInformation-List,  
    CriticalityDiagnostics,  
    E-RAB-ID,  
    E-RAB-List,  
    E-RAB-QoS-Parameters,  
    Global-ENB-ID,  
    GTPtunnelEndpoint,  
    Measurement-ID,  
    MeasurementInitiationResult-List,  
    MobilitySet,  
    PartialSuccessIndicator,  
    PLMN-Identity,  
    Registration-Request,  
    ReportCharacteristics,  
    ReportingPeriodicity,  
    UE-Identity,  
    UE-XwAP-ID,  
    WLANIdentifier-List,  
    WLANIdentifiersToDelete-List,  
    WLANSecurityInfo,  
    WTID
```

```
FROM XwAP-IEs
```

```
    PrivateIE-Container{},  
    ProtocolExtensionContainer{},  
    ProtocolIE-Container{},  
    ProtocolIE-ContainerList{},  
    ProtocolIE-ContainerPair{},  
    ProtocolIE-ContainerPairList{},  
    ProtocolIE-SingleContainer{},  
    XWAP-PRIVATE-IES,  
    XWAP-PROTOCOL-EXTENSION,  
    XWAP-PROTOCOL-IES,  
    XWAP-PROTOCOL-IES-PAIR
```


FROM XwAP-Containers

id-BSSMeasurementResult-List,
id-BSSToReport-List,
id-Cause,
id-CompleteFailureCauseInformation-List,
id-UE-ContextInformationWTModReq,
id-CriticalityDiagnostics,
id-ENB-Measurement-ID,
id-ENB-UE-XwAP-ID,
id-E-RABs-Admitted-ToBeAdded-Item,
id-E-RABs-Admitted-ToBeAdded-List,
id-E-RABs-Admitted-ToBeAdded-ModAckItem,
id-E-RABs-Admitted-ToBeAdded-ModAckList,
id-E-RABs-Admitted-ToBeModified-ModAckItem,
id-E-RABs-Admitted-ToBeModified-ModAckList,
id-E-RABs-Admitted-ToBeReleased-ModAckItem,
id-E-RABs-Admitted-ToBeReleased-ModAckList,
id-E-RABs-Confirmed-ToBeModified-ModReqdList,
id-E-RABs-Confirmed-ToBeModified-ModReqdItem,
id-E-RABs-Confirmed-ToBeReleased-ModReqdList,
id-E-RABs-Confirmed-ToBeReleased-ModReqdItem,
id-E-RABs-NotAdmitted-List,
id-E-RABs-ToBeAdded-Item,
id-E-RABs-ToBeAdded-List,
id-E-RABs-ToBeAdded-ModReqItem,
id-E-RABs-ToBeModified-ModReqItem,
id-E-RABs-ToBeModified-ModReqdList,
id-E-RABs-ToBeModified-ModReqdItem,
id-E-RABs-ToBeReleased-ModReqItem,
id-E-RABs-ToBeReleased-List-RelConf,
id-E-RABs-ToBeReleased-RelConfItem,
id-E-RABs-ToBeReleased-List-RelReq,
id-E-RABs-ToBeReleased-RelReqItem,
id-E-RABs-ToBeReleased-ModReqdList,
id-E-RABs-ToBeReleased-ModReqdItem,
id-Global-ENB-ID,
id-MeasurementInitiationResult-List,
id-MobilitySet,
id-PartialSuccessIndicator,
id-ServingPLMN,
id-Registration-Request,
id-ReportCharacteristics,
id-ReportingPeriodicity,
id-UE-Identity,
id-WLANIdentifier-List,
id-WLANIdentifiersToAdd-List,
id-WLANIdentifiersToDelete-List,
id-WLANIdentifiersToModify-List,
id-WLANSecurityInfo,
id-WTID,
id-WT-Measurement-ID,
id-WT-UE-XwAP-ID,

```

maxnoofBearers
FROM XwAP-Constants;

-- *****
--
-- Xw SETUP ELEMENTARY PROCEDURE
--
-- *****

-- *****
--
-- Xw Setup Request
--
-- *****

XwSetupRequest ::= SEQUENCE {
    protocolIEs          ProtocolIE-Container          { {XwSetupRequestIEs} },
    ...
}

XwSetupRequestIEs XWAP-PROTOCOL-IES ::= {
    { ID id-Global-ENB-ID    CRITICALITY reject  TYPE Global-ENB-ID    PRESENCE mandatory },
    ...
}

-- *****
--
-- Xw Setup Response
--
-- *****

XwSetupResponse ::= SEQUENCE {
    protocolIEs          ProtocolIE-Container          { {XwSetupResponseIEs} },
    ...
}

XwSetupResponseIEs XWAP-PROTOCOL-IES ::= {
    { ID id-WTID              CRITICALITY reject  TYPE WTID              PRESENCE mandatory}|
    { ID id-WLANIdentifier-List CRITICALITY reject  TYPE WLANIdentifier-List PRESENCE mandatory}|
    { ID id-CriticalityDiagnostics CRITICALITY ignore TYPE CriticalityDiagnostics PRESENCE optional},
    ...
}

-- *****
--
-- Xw Setup Failure
--
-- *****

XwSetupFailure ::= SEQUENCE {
    protocolIEs          ProtocolIE-Container          { {XwSetupFailureIEs} },
    ...
}

```

```

}

XwSetupFailureIEs XWAP-PROTOCOL-IES ::= {
  { ID id-Cause          CRITICALITY ignore  TYPE Cause          PRESENCE mandatory}|
  { ID id-CriticalityDiagnostics CRITICALITY ignore  TYPE CriticalityDiagnostics PRESENCE optional},
  ...
}

-- *****
--
-- WT CONFIGURATION UPDATE ELEMENTARY PROCEDURE
--
-- *****

-- *****
--
-- WT Configuration Update
--
-- *****

WTConfigurationUpdate ::= SEQUENCE {
  protocolIEs          ProtocolIE-Container    { {WTConfigurationUpdateIEs} },
  ...
}

WTConfigurationUpdateIEs XWAP-PROTOCOL-IES ::= {
  { ID id-WLANIdentifiersToAdd-List   CRITICALITY reject  TYPE WLANIdentifier-List   PRESENCE optional}|
  { ID id-WLANIdentifiersToModify-List CRITICALITY reject  TYPE WLANIdentifier-List   PRESENCE optional}|
  { ID id-WLANIdentifiersToDelete-List CRITICALITY reject  TYPE WLANIdentifiersToDelete-List PRESENCE optional},
  ...
}

-- *****
--
-- WT Configuration Update Acknowledge
--
-- *****

WTConfigurationUpdateAcknowledge ::= SEQUENCE {
  protocolIEs          ProtocolIE-Container    { {WTConfigurationUpdateAcknowledgeIEs} },
  ...
}

WTConfigurationUpdateAcknowledgeIEs XWAP-PROTOCOL-IES ::= {
  { ID id-CriticalityDiagnostics      CRITICALITY ignore  TYPE CriticalityDiagnostics PRESENCE optional},
  ...
}

-- *****
--
-- WT Configuration Update Failure
--
-- *****

```

```

WTConfigurationUpdateFailure ::= SEQUENCE {
    protocolIEs          ProtocolIE-Container      { {WTConfigurationUpdateFailureIEs} },
    ...
}

WTConfigurationUpdateFailureIEs XWAP-PROTOCOL-IES ::= {
    { ID id-Cause          CRITICALITY ignore  TYPE Cause          PRESENCE mandatory}|
    { ID id-CriticalityDiagnostics  CRITICALITY ignore  TYPE CriticalityDiagnostics  PRESENCE optional},
    ...
}

-- *****
--
-- WT STATUS REPORTING INITIATION ELEMENTARY PROCEDURE
--
-- *****
--
-- *****
--
-- WT Status Request
--
-- *****

WTStatusRequest ::= SEQUENCE {
    protocolIEs          ProtocolIE-Container      {{WTStatusRequest-IEs}},
    ...
}

WTStatusRequest-IEs XWAP-PROTOCOL-IES ::= {
    { ID id-ENB-Measurement-ID      CRITICALITY reject  TYPE Measurement-ID      PRESENCE mandatory}|
    { ID id-WT-Measurement-ID      CRITICALITY ignore  TYPE Measurement-ID      PRESENCE conditional}|
-- The IE shall be present if the Registration Request IE is set to 'Stop'--
    { ID id-Registration-Request    CRITICALITY reject  TYPE Registration-Request  PRESENCE mandatory}|
    { ID id-ReportCharacteristics   CRITICALITY reject  TYPE ReportCharacteristics  PRESENCE optional}|
    { ID id-BSSToReport-List       CRITICALITY ignore  TYPE BSSToReport-List     PRESENCE mandatory}|
    { ID id-ReportingPeriodicity    CRITICALITY ignore  TYPE ReportingPeriodicity  PRESENCE optional}|
    { ID id-PartialSuccessIndicator CRITICALITY ignore  TYPE PartialSuccessIndicator  PRESENCE optional},
    ...
}

-- *****
--
-- WT Status Response
--
-- *****

WTStatusResponse ::= SEQUENCE {
    protocolIEs          ProtocolIE-Container      {{WTStatusResponse-IEs}},
    ...
}

WTStatusResponse-IEs XWAP-PROTOCOL-IES ::= {
    { ID id-ENB-Measurement-ID      CRITICALITY reject  TYPE Measurement-ID      PRESENCE mandatory}|

```

```

    { ID id-WT-Measurement-ID                CRITICALITY reject TYPE Measurement-ID                PRESENCE mandatory}|
    { ID id-MeasurementInitiationResult-List CRITICALITY ignore TYPE MeasurementInitiationResult-List PRESENCE optional}|
    { ID id-CriticalityDiagnostics           CRITICALITY ignore TYPE CriticalityDiagnostics           PRESENCE optional},
    ...
}

-- *****
--
-- WT Status Failure
--
-- *****

WTStatusFailure ::= SEQUENCE {
    protocolIEs      ProtocolIE-Container    {{WTStatusFailure-IEs}},
    ...
}

WTStatusFailure-IEs XWAP-PROTOCOL-IES ::= {
    { ID id-ENB-Measurement-ID                CRITICALITY reject TYPE Measurement-ID                PRESENCE mandatory}|
    { ID id-WT-Measurement-ID                CRITICALITY reject TYPE Measurement-ID                PRESENCE mandatory}|
    { ID id-CompleteFailureCauseInformation-List CRITICALITY ignore TYPE CompleteFailureCauseInformation-List PRESENCE optional}|
    { ID id-Cause                            CRITICALITY ignore TYPE Cause                            PRESENCE mandatory}|
    { ID id-CriticalityDiagnostics           CRITICALITY ignore TYPE CriticalityDiagnostics           PRESENCE optional},
    ...
}

-- *****
--
-- WT STATUS REPORTING ELEMENTARY PROCEDURE
--
-- *****
--
-- WT Status Report
--
-- *****

WTStatusReport ::= SEQUENCE {
    protocolIEs      ProtocolIE-Container    {{WTStatusReport-IEs}},
    ...
}

WTStatusReport-IEs XWAP-PROTOCOL-IES ::= {
    { ID id-ENB-Measurement-ID                CRITICALITY reject TYPE Measurement-ID                PRESENCE mandatory}|
    { ID id-WT-Measurement-ID                CRITICALITY reject TYPE Measurement-ID                PRESENCE mandatory}|
    { ID id-BSSMeasurementResult-List        CRITICALITY ignore TYPE BSSMeasurementResult-List        PRESENCE mandatory},
    ...
}

-- *****
--
-- ERROR INDICATION ELEMENTARY PROCEDURE
--

```

```

-- *****
-- *****
--
-- Error Indication
--
-- *****

ErrorIndication ::= SEQUENCE {
    protocolIEs      ProtocolIE-Container    {{ErrorIndication-IEs}},
    ...
}

ErrorIndication-IEs XWAP-PROTOCOL-IES ::= {
    { ID id-ENB-UE-XwAP-ID          CRITICALITY ignore  TYPE UE-XwAP-ID          PRESENCE optional}|
    { ID id-WT-UE-XwAP-ID          CRITICALITY ignore  TYPE UE-XwAP-ID          PRESENCE optional}|
    { ID id-Cause                   CRITICALITY ignore  TYPE Cause               PRESENCE optional}|
    { ID id-CriticalityDiagnostics  CRITICALITY ignore  TYPE CriticalityDiagnostics PRESENCE optional},
    ...
}

-- *****
--
-- RESET ELEMENTARY PROCEDURE
--
-- *****

-- *****
--
-- Reset
--
-- *****

Reset ::= SEQUENCE {
    protocolIEs      ProtocolIE-Container    {{Reset-IEs}},
    ...
}

Reset-IEs XWAP-PROTOCOL-IES ::= {
    { ID id-Cause                  CRITICALITY ignore  TYPE Cause               PRESENCE mandatory},
    ...
}

-- *****
--
-- Reset Response
--
-- *****

ResetResponse ::= SEQUENCE {
    protocolIEs      ProtocolIE-Container    {{ResetResponse-IEs}},
    ...
}

```

```

ResetResponse-IEs XWAP-PROTOCOL-IES ::= {
  { ID id-CriticalityDiagnostics      CRITICALITY ignore  TYPE CriticalityDiagnostics      PRESENCE optional},
  ...
}

-- *****
--
-- WT ADDITION PREPARATION ELEMENTARY PROCEDURE
--
-- *****

-- *****
--
-- WT Addition Request
--
-- *****

WTAdditionRequest ::= SEQUENCE {
  protocolIEs      ProtocolIE-Container      { {WTAdditionRequestIEs} },
  ...
}

WTAdditionRequestIEs XWAP-PROTOCOL-IES ::= {
  { ID id-ENB-UE-XwAP-ID      CRITICALITY reject  TYPE UE-XwAP-ID      PRESENCE mandatory}|
  { ID id-UE-Identity         CRITICALITY reject  TYPE UE-Identity     PRESENCE mandatory}|
  { ID id-WLANSecurityInfo    CRITICALITY reject  TYPE WLANSecurityInfo PRESENCE optional}|
  { ID id-ServingPLMN         CRITICALITY ignore  TYPE PLMN-Identity   PRESENCE optional}|
  { ID id-E-RABs-ToBeAdded-List CRITICALITY reject  TYPE E-RABs-ToBeAdded-List PRESENCE mandatory}|
  { ID id-MobilitySet         CRITICALITY reject  TYPE MobilitySet      PRESENCE mandatory},
  ...
}

E-RABs-ToBeAdded-List ::= SEQUENCE (SIZE(1..maxnoofBearers)) OF ProtocolIE-SingleContainer { {E-RABs-ToBeAdded-ItemIEs} }

E-RABs-ToBeAdded-ItemIEs XWAP-PROTOCOL-IES ::= {
  { ID id-E-RABs-ToBeAdded-Item CRITICALITY reject  TYPE E-RABs-ToBeAdded-Item PRESENCE mandatory},
  ...
}

E-RABs-ToBeAdded-Item ::= SEQUENCE {
  e-RAB-ID          E-RAB-ID,
  e-RAB-QoS-Parameters E-RAB-QoS-Parameters,
  eNB-GTPTunnelEndpoint GTPTunnelEndpoint,
  iE-Extensions     ProtocolExtensionContainer { {E-RABs-ToBeAdded-ItemExtIEs} } OPTIONAL,
  ...
}

E-RABs-ToBeAdded-ItemExtIEs XWAP-PROTOCOL-EXTENSION ::= {
  ...
}

-- *****
--

```

```

-- WT Addition Request Acknowledge
--
-- *****
WTAdditionRequestAcknowledge ::= SEQUENCE {
    protocolIEs          ProtocolIE-Container      { { WTAdditionRequestAcknowledgeIEs } },
    ...
}

WTAdditionRequestAcknowledgeIEs XWAP-PROTOCOL-IES ::= {
    { ID id-ENB-UE-XwAP-ID          CRITICALITY ignore TYPE UE-XwAP-ID          PRESENCE mandatory } |
    { ID id-WT-UE-XwAP-ID          CRITICALITY ignore TYPE UE-XwAP-ID          PRESENCE mandatory } |
    { ID id-E-RABs-Admitted-ToBeAdded-List CRITICALITY ignore TYPE E-RABs-Admitted-ToBeAdded-List PRESENCE mandatory } |
    { ID id-E-RABs-NotAdmitted-List CRITICALITY ignore TYPE E-RAB-List          PRESENCE optional } |
    { ID id-CriticalityDiagnostics CRITICALITY ignore TYPE CriticalityDiagnostics PRESENCE optional },
    ...
}

E-RABs-Admitted-ToBeAdded-List ::= SEQUENCE (SIZE (1..maxnoofBearers)) OF ProtocolIE-SingleContainer { {E-RABs-Admitted-ToBeAdded-ItemIEs} }

E-RABs-Admitted-ToBeAdded-ItemIEs XWAP-PROTOCOL-IES ::= {
    { ID id-E-RABs-Admitted-ToBeAdded-Item CRITICALITY ignore TYPE E-RABs-Admitted-ToBeAdded-Item PRESENCE mandatory }
}

E-RABs-Admitted-ToBeAdded-Item ::= SEQUENCE {
    e-RAB-ID          E-RAB-ID,
    wT-GTPtunnelEndpoint GTPtunnelEndpoint,
    iE-Extensions     ProtocolExtensionContainer { {E-RABs-Admitted-ToBeAdded-ItemExtIEs} } OPTIONAL,
    ...
}

E-RABs-Admitted-ToBeAdded-ItemExtIEs XWAP-PROTOCOL-EXTENSION ::= {
    ...
}

-- *****
--
-- WT Addition Request Reject
--
-- *****
WTAdditionRequestReject ::= SEQUENCE {
    protocolIEs          ProtocolIE-Container      { { WTAdditionRequestRejectIEs } },
    ...
}

WTAdditionRequestRejectIEs XWAP-PROTOCOL-IES ::= {
    { ID id-ENB-UE-XwAP-ID          CRITICALITY ignore TYPE UE-XwAP-ID          PRESENCE mandatory } |
    { ID id-Cause                   CRITICALITY ignore TYPE Cause              PRESENCE mandatory } |
    { ID id-CriticalityDiagnostics CRITICALITY ignore TYPE CriticalityDiagnostics PRESENCE optional },
    ...
}

```



```

-- *****
--
-- eNB INITIATED WT MODIFICATION ELEMENTARY PROCEDURE
--
-- *****
--
-- *****
--
-- WT Modification Request
--
-- *****

WTModificationRequest ::= SEQUENCE {
    protocolIEs          ProtocolIE-Container          { { WTModificationRequestIEs } },
    ...
}

WTModificationRequestIEs XWAP-PROTOCOL-IES ::= {
    { ID id-ENB-UE-XwAP-ID          CRITICALITY reject TYPE UE-XwAP-ID          PRESENCE mandatory } |
    { ID id-WT-UE-XwAP-ID          CRITICALITY reject TYPE UE-XwAP-ID          PRESENCE mandatory } |
    { ID id-Cause                   CRITICALITY ignore TYPE Cause                PRESENCE mandatory } |
    { ID id-ServingPLMN             CRITICALITY ignore TYPE PLMN-Identity        PRESENCE optional } |
    { ID id-UE-ContextInformationWTModReq CRITICALITY reject TYPE UE-ContextInformationWTModReq PRESENCE optional } |
    { ID id-MobilitySet             CRITICALITY reject TYPE MobilitySet          PRESENCE optional },
    ...
}

UE-ContextInformationWTModReq ::= SEQUENCE {
    wlanSecurityInfo          WLANSecurityInfo          OPTIONAL,
    e-RABs-ToBeAdded          E-RABs-ToBeAdded-List-ModReq          OPTIONAL,
    e-RABs-ToBeModified        E-RABs-ToBeModified-List-ModReq          OPTIONAL,
    e-RABs-ToBeReleased        E-RABs-ToBeReleased-List-ModReq          OPTIONAL,
    iE-Extensions              ProtocolExtensionContainer { { UE-ContextInformationWTModReqExtIEs } } OPTIONAL,
    ...
}

UE-ContextInformationWTModReqExtIEs XWAP-PROTOCOL-EXTENSION ::= {
    ...
}

E-RABs-ToBeAdded-List-ModReq ::= SEQUENCE (SIZE(1..maxnoofBearers)) OF ProtocolIE-SingleContainer { {E-RABs-ToBeAdded-ModReqItemIEs} }

E-RABs-ToBeAdded-ModReqItemIEs XWAP-PROTOCOL-IES ::= {
    { ID id-E-RABs-ToBeAdded-ModReqItem CRITICALITY ignore TYPE E-RABs-ToBeAdded-ModReqItem PRESENCE mandatory },
    ...
}

E-RABs-ToBeAdded-ModReqItem ::= SEQUENCE {
    e-RAB-ID                  E-RAB-ID,
    e-RAB-QoS-Parameters      E-RAB-QoS-Parameters,
    eNB-GTPtunnelEndpoint     GTPtunnelEndpoint,
    iE-Extensions              ProtocolExtensionContainer { {E-RABs-ToBeAdded-ModReqItemExtIEs} } OPTIONAL,
    ...
}

```

```

}
E-RABs-ToBeAdded-ModReqItemExtIEs XWAP-PROTOCOL-EXTENSION ::= {
  ...
}
E-RABs-ToBeModified-List-ModReq ::= SEQUENCE (SIZE(1..maxnoofBearers)) OF ProtocolIE-SingleContainer { {E-RABs-ToBeModified-ModReqItemIEs} }
E-RABs-ToBeModified-ModReqItemIEs XWAP-PROTOCOL-IES ::= {
  { ID id-E-RABs-ToBeModified-ModReqItem CRITICALITY ignore TYPE E-RABs-ToBeModified-ModReqItem PRESENCE mandatory},
  ...
}
E-RABs-ToBeModified-ModReqItem ::= SEQUENCE {
  e-RAB-ID E-RAB-ID,
  e-RAB-QoS-Parameters E-RAB-QoS-Parameters OPTIONAL,
  eNB-GTPtunnelEndpoint GTPtunnelEndpoint OPTIONAL,
  iE-Extensions ProtocolExtensionContainer { {E-RABs-ToBeModified-ModReqItemExtIEs} } OPTIONAL,
  ...
}
E-RABs-ToBeModified-ModReqItemExtIEs XWAP-PROTOCOL-EXTENSION ::= {
  ...
}
E-RABs-ToBeReleased-List-ModReq ::= SEQUENCE (SIZE(1..maxnoofBearers)) OF ProtocolIE-SingleContainer { {E-RABs-ToBeReleased-ModReqItemIEs} }
E-RABs-ToBeReleased-ModReqItemIEs XWAP-PROTOCOL-IES ::= {
  { ID id-E-RABs-ToBeReleased-ModReqItem CRITICALITY ignore TYPE E-RABs-ToBeReleased-ModReqItem PRESENCE mandatory},
  ...
}
E-RABs-ToBeReleased-ModReqItem ::= SEQUENCE {
  e-RAB-ID E-RAB-ID,
  dL-GTPtunnelEndpoint GTPtunnelEndpoint OPTIONAL,
  iE-Extensions ProtocolExtensionContainer { {E-RABs-ToBeReleased-ModReqItemExtIEs} } OPTIONAL,
  ...
}
E-RABs-ToBeReleased-ModReqItemExtIEs XWAP-PROTOCOL-EXTENSION ::= {
  ...
}

-- *****
--
-- WT Modification Request Acknowledge
--
-- *****

WTModificationRequestAcknowledge ::= SEQUENCE {
  protocolIEs ProtocolIE-Container { { WTModificationRequestAcknowledgeIEs} },
  ...
}

```

```

WModificationRequestAcknowledgeIEs XWAP-PROTOCOL-IES ::= {
  { ID id-ENB-UE-XwAP-ID          CRITICALITY ignore TYPE UE-XwAP-ID          PRESENCE mandatory} |
  { ID id-WT-UE-XwAP-ID          CRITICALITY ignore TYPE UE-XwAP-ID          PRESENCE mandatory} |
  { ID id-E-RABs-Admitted-ToBeAdded-ModAckList CRITICALITY ignore TYPE E-RABs-Admitted-ToBeAdded-ModAckList PRESENCE optional} |
  { ID id-E-RABs-Admitted-ToBeModified-ModAckList CRITICALITY ignore TYPE E-RABs-Admitted-ToBeModified-ModAckList PRESENCE optional} |
  { ID id-E-RABs-Admitted-ToBeReleased-ModAckList CRITICALITY ignore TYPE E-RABs-Admitted-ToBeReleased-ModAckList PRESENCE optional} |
  { ID id-E-RABs-NotAdmitted-List CRITICALITY ignore TYPE E-RAB-List          PRESENCE optional} |
  { ID id-CriticalityDiagnostics CRITICALITY ignore TYPE CriticalityDiagnostics PRESENCE optional},
  ...
}

E-RABs-Admitted-ToBeAdded-ModAckList ::= SEQUENCE (SIZE (1..maxnoofBearers)) OF ProtocolIE-SingleContainer { {E-RABs-Admitted-ToBeAdded-ModAckItemIEs} }

E-RABs-Admitted-ToBeAdded-ModAckItemIEs XWAP-PROTOCOL-IES ::= {
  { ID id-E-RABs-Admitted-ToBeAdded-ModAckItem CRITICALITY ignore TYPE E-RABs-Admitted-ToBeAdded-ModAckItem PRESENCE mandatory}
}

E-RABs-Admitted-ToBeAdded-ModAckItem ::= SEQUENCE {
  e-RAB-ID E-RAB-ID,
  wT-GTPTunnelEndpoint GTPtunnelEndpoint,
  iE-Extensions ProtocolExtensionContainer { {E-RABs-Admitted-ToBeAdded-ModAckItemExtIEs} } OPTIONAL,
  ...
}

E-RABs-Admitted-ToBeAdded-ModAckItemExtIEs XWAP-PROTOCOL-EXTENSION ::= {
  ...
}

E-RABs-Admitted-ToBeModified-ModAckList ::= SEQUENCE (SIZE (1..maxnoofBearers)) OF ProtocolIE-SingleContainer { {E-RABs-Admitted-ToBeModified-ModAckItemIEs} }

E-RABs-Admitted-ToBeModified-ModAckItemIEs XWAP-PROTOCOL-IES ::= {
  { ID id-E-RABs-Admitted-ToBeModified-ModAckItem CRITICALITY ignore TYPE E-RABs-Admitted-ToBeModified-ModAckItem PRESENCE mandatory}
}

E-RABs-Admitted-ToBeModified-ModAckItem ::= SEQUENCE {
  e-RAB-ID E-RAB-ID,
  wT-GTPTunnelEndpoint GTPtunnelEndpoint OPTIONAL,
  iE-Extensions ProtocolExtensionContainer { {E-RABs-Admitted-ToBeModified-ModAckItemExtIEs} } OPTIONAL,
  ...
}

E-RABs-Admitted-ToBeModified-ModAckItemExtIEs XWAP-PROTOCOL-EXTENSION ::= {
  ...
}

E-RABs-Admitted-ToBeReleased-ModAckList ::= SEQUENCE (SIZE (1..maxnoofBearers)) OF ProtocolIE-SingleContainer { {E-RABs-Admitted-ToBeReleased-ModAckItemIEs} }

E-RABs-Admitted-ToBeReleased-ModAckItemIEs XWAP-PROTOCOL-IES ::= {
  { ID id-E-RABs-Admitted-ToBeReleased-ModAckItem CRITICALITY ignore TYPE E-RABs-Admitted-ToBeReleased-ModAckItem PRESENCE mandatory}
}

```

```

E-RABS-Admitted-ToBeReleased-ModAckItem ::= SEQUENCE {
    e-RAB-ID          E-RAB-ID,
    iE-Extensions     ProtocolExtensionContainer { {E-RABS-Admitted-ToBeReleased-ModAckItemExtIEs} } OPTIONAL,
    ...
}

E-RABS-Admitted-ToBeReleased-ModAckItemExtIEs XWAP-PROTOCOL-EXTENSION ::= {
    ...
}

-- *****
--
-- WT Modification Request Reject
--
-- *****

WTModificationRequestReject ::= SEQUENCE {
    protocolIEs      ProtocolIE-Container      { { WTModificationRequestRejectIEs} },
    ...
}

WTModificationRequestRejectIEs XWAP-PROTOCOL-IES ::= {
    { ID id-ENB-UE-XwAP-ID          CRITICALITY ignore TYPE UE-XwAP-ID          PRESENCE mandatory}|
    { ID id-WT-UE-XwAP-ID          CRITICALITY ignore TYPE UE-XwAP-ID          PRESENCE mandatory}|
    { ID id-Cause                   CRITICALITY ignore TYPE Cause                PRESENCE mandatory}|
    { ID id-CriticalityDiagnostics  CRITICALITY ignore TYPE CriticalityDiagnostics PRESENCE optional},
    ...
}

-- *****
--
-- WT INITIATED WT MODIFICATION ELEMENTARY PROCEDURE
--
-- *****
--
-- WT Modification Required
--
-- *****

WTModificationRequired ::= SEQUENCE {
    protocolIEs      ProtocolIE-Container      { { WTModificationRequiredIEs} },
    ...
}

WTModificationRequiredIEs XWAP-PROTOCOL-IES ::= {
    { ID id-ENB-UE-XwAP-ID          CRITICALITY reject TYPE UE-XwAP-ID          PRESENCE mandatory}|
    { ID id-WT-UE-XwAP-ID          CRITICALITY reject TYPE UE-XwAP-ID          PRESENCE mandatory}|
    { ID id-Cause                   CRITICALITY ignore TYPE Cause                PRESENCE mandatory}|
    { ID id-E-RABS-ToBeReleased-ModReqdList CRITICALITY ignore TYPE E-RABS-ToBeReleased-ModReqdList PRESENCE optional}|
    { ID id-E-RABS-ToBeModified-ModReqdList CRITICALITY ignore TYPE E-RABS-ToBeModified-ModReqdList PRESENCE optional},
}

```

```

}
...
E-RABs-ToBeReleased-ModReqdList ::= SEQUENCE (SIZE (1..maxnoofBearers)) OF ProtocolIE-SingleContainer { {E-RABs-ToBeReleased-ModReqdItemIEs} }

E-RABs-ToBeReleased-ModReqdItemIEs XWAP-PROTOCOL-IES ::= {
  { ID id-E-RABs-ToBeReleased-ModReqdItem CRITICALITY ignore TYPE E-RABs-ToBeReleased-ModReqdItem PRESENCE mandatory},
  ...
}

E-RABs-ToBeReleased-ModReqdItem ::= SEQUENCE {
  e-RAB-ID E-RAB-ID,
  cause Cause,
  iE-Extensions ProtocolExtensionContainer { {E-RABs-ToBeReleased-ModReqdItemExtIEs} } OPTIONAL,
  ...
}

E-RABs-ToBeReleased-ModReqdItemExtIEs XWAP-PROTOCOL-EXTENSION ::= {
  ...
}

E-RABs-ToBeModified-ModReqdList ::= SEQUENCE (SIZE (1..maxnoofBearers)) OF ProtocolIE-SingleContainer { {E-RABs-ToBeModified-ModReqdItemIEs} }

E-RABs-ToBeModified-ModReqdItemIEs XWAP-PROTOCOL-IES ::= {
  { ID id-E-RABs-ToBeModified-ModReqdItem CRITICALITY ignore TYPE E-RABs-ToBeModified-ModReqdItem PRESENCE mandatory},
  ...
}

E-RABs-ToBeModified-ModReqdItem ::= SEQUENCE {
  e-RAB-ID E-RAB-ID,
  wT-GTPtunnelEndpoint GTPtunnelEndpoint OPTIONAL,
  iE-Extensions ProtocolExtensionContainer { {E-RABs-ToBeModified-ModReqdItemExtIEs} } OPTIONAL,
  ...
}

E-RABs-ToBeModified-ModReqdItemExtIEs XWAP-PROTOCOL-EXTENSION ::= {
  ...
}

-- *****
--
-- WT Modification Confirm
--
-- *****

WTModificationConfirm ::= SEQUENCE {
  protocolIEs ProtocolIE-Container { { WTModificationConfirmIEs} },
  ...
}

WTModificationConfirmIEs XWAP-PROTOCOL-IES ::= {
  { ID id-ENB-UE-XwAP-ID CRITICALITY ignore TYPE UE-XwAP-ID PRESENCE mandatory}|
  { ID id-WT-UE-XwAP-ID CRITICALITY ignore TYPE UE-XwAP-ID PRESENCE mandatory}|
  { ID id-E-RABs-Confirmed-ToBeReleased-ModReqdList CRITICALITY ignore TYPE E-RABs-Confirmed-ToBeReleased-ModReqdList PRESENCE optional}|

```

```

    { ID id-E-RABs-Confirmed-ToBeModified-ModReqdList  CRITICALITY ignore  TYPE E-RABs-Confirmed-ToBeModified-ModReqdList  PRESENCE optional}|
    { ID id-CriticalityDiagnostics                    CRITICALITY ignore  TYPE CriticalityDiagnostics                    PRESENCE optional},
    ...
}

E-RABs-Confirmed-ToBeReleased-ModReqdList ::= SEQUENCE (SIZE(1..maxnoofBearers)) OF ProtocolIE-SingleContainer { {E-RABs-Confirmed-ToBeReleased-ModReqdItemIEs} }

E-RABs-Confirmed-ToBeReleased-ModReqdItemIEs XWAP-PROTOCOL-IES ::= {
    { ID id-E-RABs-Confirmed-ToBeReleased-ModReqdItem  CRITICALITY ignore  TYPE E-RABs-Confirmed-ToBeReleased-ModReqdItem  PRESENCE mandatory},
    ...
}

E-RABs-Confirmed-ToBeReleased-ModReqdItem ::= SEQUENCE {
    e-RAB-ID                E-RAB-ID,
    dL-GTPTunnelEndpoint    GTPtunnelEndpoint                                OPTIONAL,
    iE-Extensions           ProtocolExtensionContainer { {E-RABs-Confirmed-ToBeReleased-ModReqdItemExtIEs} }  OPTIONAL,
    ...
}

E-RABs-Confirmed-ToBeReleased-ModReqdItemExtIEs XWAP-PROTOCOL-EXTENSION ::= {
    ...
}

E-RABs-Confirmed-ToBeModified-ModReqdList ::= SEQUENCE (SIZE(1..maxnoofBearers)) OF ProtocolIE-SingleContainer { {E-RABs-Confirmed-ToBeModified-ModReqdItemIEs} }

E-RABs-Confirmed-ToBeModified-ModReqdItemIEs XWAP-PROTOCOL-IES ::= {
    { ID id-E-RABs-Confirmed-ToBeModified-ModReqdItem  CRITICALITY ignore  TYPE E-RABs-Confirmed-ToBeModified-ModReqdItem  PRESENCE mandatory},
    ...
}

E-RABs-Confirmed-ToBeModified-ModReqdItem ::= SEQUENCE {
    e-RAB-ID                E-RAB-ID,
    iE-Extensions           ProtocolExtensionContainer { {E-RABs-Confirmed-ToBeModified-ModReqdItemExtIEs} }  OPTIONAL,
    ...
}

E-RABs-Confirmed-ToBeModified-ModReqdItemExtIEs XWAP-PROTOCOL-EXTENSION ::= {
    ...
}

-- *****
--
-- WT Modification Refuse
--
-- *****

WTModificationRefuse ::= SEQUENCE {
    protocolIEs           ProtocolIE-Container          { { WTModificationRefuseIEs } },
    ...
}

WTModificationRefuseIEs XWAP-PROTOCOL-IES ::= {

```

```

    { ID id-ENB-UE-XwAP-ID          CRITICALITY ignore TYPE UE-XwAP-ID          PRESENCE mandatory} |
    { ID id-WT-UE-XwAP-ID          CRITICALITY ignore TYPE UE-XwAP-ID          PRESENCE mandatory} |
    { ID id-Cause                  CRITICALITY ignore TYPE Cause                PRESENCE mandatory} |
    { ID id-CriticalityDiagnostics CRITICALITY ignore TYPE CriticalityDiagnostics PRESENCE optional},
    ...
}

-- *****
--
-- eNB INITIATED WT RELEASE ELEMENTARY PROCEDURE
--
-- *****

-- *****
--
-- WT Release Request
--
-- *****

WTReleaseRequest ::= SEQUENCE {
    protocolIEs      ProtocolIE-Container    {{ WTReleaseRequest-IEs}},
    ...
}

WTReleaseRequest-IEs XWAP-PROTOCOL-IES ::= {
    { ID id-ENB-UE-XwAP-ID          CRITICALITY reject TYPE UE-XwAP-ID          PRESENCE mandatory} |
    { ID id-WT-UE-XwAP-ID          CRITICALITY reject TYPE UE-XwAP-ID          PRESENCE mandatory} |
    { ID id-Cause                  CRITICALITY ignore TYPE Cause                PRESENCE optional} |
    { ID id-E-RABs-ToBeReleased-List-RelReq CRITICALITY ignore TYPE E-RABs-ToBeReleased-List-RelReq PRESENCE optional},
    ...
}

E-RABs-ToBeReleased-List-RelReq ::= SEQUENCE (SIZE(1..maxnoofBearers)) OF ProtocolIE-SingleContainer { {E-RABs-ToBeReleased-RelReqItemIEs} }

E-RABs-ToBeReleased-RelReqItemIEs XWAP-PROTOCOL-IES ::= {
    { ID id-E-RABs-ToBeReleased-RelReqItem CRITICALITY ignore TYPE E-RABs-ToBeReleased-RelReqItem PRESENCE mandatory},
    ...
}

E-RABs-ToBeReleased-RelReqItem ::= SEQUENCE {
    e-RAB-ID          E-RAB-ID,
    wT-GTPTunnelEndpoint GTPTunnelEndpoint OPTIONAL,
    iE-Extensions     ProtocolExtensionContainer { {E-RABs-ToBeReleased-RelReqItemExtIEs} } OPTIONAL,
    ...
}

E-RABs-ToBeReleased-RelReqItemExtIEs XWAP-PROTOCOL-EXTENSION ::= {
    ...
}

-- *****
--

```

```

-- WT INITIATED WT RELEASE ELEMENTARY PROCEDURE
--
-- *****
-- *****
--
-- WT Release Required
--
-- *****

WTReleaseRequired ::= SEQUENCE {
    protocolIEs          ProtocolIE-Container          { { WTReleaseRequiredIEs } },
    ...
}

WTReleaseRequiredIEs XWAP-PROTOCOL-IES ::= {
    { ID id-ENB-UE-XwAP-ID          CRITICALITY reject  TYPE UE-XwAP-ID          PRESENCE mandatory}|
    { ID id-WT-UE-XwAP-ID          CRITICALITY reject  TYPE UE-XwAP-ID          PRESENCE mandatory}|
    { ID id-Cause                    CRITICALITY ignore  TYPE Cause                PRESENCE mandatory},
    ...
}

-- *****
--
-- WT Release Confirm
--
-- *****

WTReleaseConfirm ::= SEQUENCE {
    protocolIEs          ProtocolIE-Container          { { WTReleaseConfirmIEs } },
    ...
}

WTReleaseConfirmIEs XWAP-PROTOCOL-IES ::= {
    { ID id-ENB-UE-XwAP-ID          CRITICALITY ignore  TYPE UE-XwAP-ID          PRESENCE mandatory}|
    { ID id-WT-UE-XwAP-ID          CRITICALITY ignore  TYPE UE-XwAP-ID          PRESENCE mandatory}|
    { ID id-E-RABs-ToBeReleased-List-RelConf  CRITICALITY ignore  TYPE E-RABs-ToBeReleased-List-RelConf  PRESENCE optional}|
    { ID id-CriticalityDiagnostics  CRITICALITY ignore  TYPE CriticalityDiagnostics  PRESENCE optional},
    ...
}

E-RABs-ToBeReleased-List-RelConf ::= SEQUENCE (SIZE(1..maxnoofBearers)) OF ProtocolIE-SingleContainer { {E-RABs-ToBeReleased-RelConfItemIEs} }

E-RABs-ToBeReleased-RelConfItemIEs XWAP-PROTOCOL-IES ::= {
    { ID id-E-RABs-ToBeReleased-RelConfItem  CRITICALITY ignore  TYPE E-RABs-ToBeReleased-RelConfItem  PRESENCE mandatory},
    ...
}

E-RABs-ToBeReleased-RelConfItem ::= SEQUENCE {
    e-RAB-ID                E-RAB-ID,
    wT-GTPTunnelEndpoint    GTPtunnelEndpoint                                OPTIONAL,
    iE-Extensions           ProtocolExtensionContainer { {E-RABs-ToBeReleased-RelConfItemExtIEs} } OPTIONAL,
    ...
}

```



```

E-RABS-ToBeReleased-RelConfItemExtIEs XWAP-PROTOCOL-EXTENSION ::= {
  ...
}

-- *****
--
-- WT ASSOCIATION CONFIRMATION ELEMENTARY PROCEDURE
--
-- *****
--
-- WT Association Confirmation
--
-- *****

WTAssociationConfirmation ::= SEQUENCE {
  protocolIEs          ProtocolIE-Container          { {WTAssociationConfirmationIEs} },
  ...
}

WTAssociationConfirmationIEs XWAP-PROTOCOL-IES ::= {
  { ID id-ENB-UE-XwAP-ID  CRITICALITY ignore  TYPE UE-XwAP-ID  PRESENCE mandatory}|
  { ID id-WT-UE-XwAP-ID   CRITICALITY ignore  TYPE UE-XwAP-ID  PRESENCE mandatory},
  ...
}

-- *****
--
-- PRIVATE MESSAGE
--
-- *****

PrivateMessage ::= SEQUENCE {
  privateIEs          PrivateIE-Container {{PrivateMessage-IEs}},
  ...
}

PrivateMessage-IEs XWAP-PRIVATE-IES ::= {
  ...
}

END

```

9.3.5 Information Element definitions

```

-- *****
--
-- Information Element Definitions

```

```

--
-- *****
XwAP-IEs {
itu-t (0) identified-organization (4) etsi (0) mobileDomain (0)
eps-Access (21) modules (3) xwap (8) version1 (1) xwap-IEs (2) }

DEFINITIONS AUTOMATIC TAGS ::=

BEGIN

IMPORTS
    id-BSSMeasurementResult-Item,
    id-BSSToReport-Item,
    id-E-RAB-Item,
    id-CompleteFailureCauseInformation-Item,
    id-MeasurementInitiationResult-Item,
    id-MeasurementFailureCause-Item,
    id-wLANBandInformation,
    id-WLANIdentifier-Item,
    id-WLANIdentifiersToDelete-Item,

    maxnoofBands,
    maxnoofBearers,
    maxnoofBSSs,
    maxnoofErrors,
    maxnoofFailedMeasObjects,
    maxnoofMobilitySetItems,
    maxnoofWLANIdentifierItems
FROM XwAP-Constants

    Criticality,
    ProcedureCode,
    ProtocolIE-ID,
    TriggeringMessage
FROM XwAP-CommonDataTypes

    ProtocolExtensionContainer{},
    XWAP-PROTOCOL-EXTENSION,
    ProtocolIE-SingleContainer{},
    XWAP-PROTOCOL-IES
FROM XwAP-Containers;

-- A

AllocationAndRetentionPriority ::= SEQUENCE {
    priorityLevel          PriorityLevel,
    pre-emptionCapability  Pre-emptionCapability,
    pre-emptionVulnerability  Pre-emptionVulnerability,
    iE-Extensions         ProtocolExtensionContainer { {AllocationAndRetentionPriority-ExtIEs} } OPTIONAL,
    ...
}

AllocationAndRetentionPriority-ExtIEs XWAP-PROTOCOL-EXTENSION ::= {

```

```

}
...
}
AvailableChUtilization ::= SEQUENCE {
    capacityValue          CapacityValue,
    iE-Extensions          ProtocolExtensionContainer { { AvailableChUtilization-ExtIEs} } OPTIONAL,
    ...
}

AvailableChUtilization-ExtIEs XWAP-PROTOCOL-EXTENSION ::= {
    ...
}

-- B

BitRate ::= INTEGER (0..10000000000)

BSSID ::= OCTET STRING (SIZE(6))

BSSLoad ::= SEQUENCE {
    channelUtilization      ChannelUtilization,
    stationCount            StationCount          OPTIONAL,
    iE-Extensions           ProtocolExtensionContainer { {BSSLoad-Item-ExtIEs} }    OPTIONAL,
    ...
}

BSSLoad-Item-ExtIEs XWAP-PROTOCOL-EXTENSION ::= {
    ...
}

BSS-Item ::= SEQUENCE {
    bSSID                   BSSID,
    wlanOperatingClass      WLANOperatingClass      OPTIONAL,
    wlanCountryCode         WLANCountryCode         OPTIONAL,
    maximumCapacity         BitRate                 OPTIONAL,
    wlanBandInformationList WLANBandInformationList OPTIONAL,
    iE-Extensions           ProtocolExtensionContainer { {BSS-Item-ExtIEs} } OPTIONAL,
    ...
}

BSS-Item-ExtIEs XWAP-PROTOCOL-EXTENSION ::= {
    ...
}

BSSMeasurementResult-List ::= SEQUENCE (SIZE (1..maxnoofBSSs)) OF ProtocolIE-SingleContainer { {BSSMeasurementResult-ItemIEs} }

BSSMeasurementResult-ItemIEs XWAP-PROTOCOL-IES ::= {
    { ID id-BSSMeasurementResult-Item CRITICALITY ignore TYPE BSSMeasurementResult-Item PRESENCE mandatory},
    ...
}

BSSMeasurementResult-Item ::= SEQUENCE {
    bSSID                   BSSID,
    bSSLoad                 BSSLoad                 OPTIONAL,

```

```

    wANMetrics           WANMetrics           OPTIONAL,
    availableChUtilizati AvailableChUtilizati OPTIONAL,
    iE-Extensions        ProtocolExtensionContainer { {BSSMeasurementResult-Item-ExtIEs} } OPTIONAL,
    ...
}

BSSMeasurementResult-Item-ExtIEs XWAP-PROTOCOL-EXTENSION ::= {
    ...
}

BSSToReport-List ::= SEQUENCE (SIZE (1.. maxnoofBSSs)) OF ProtocolIE-SingleContainer { {BSSToReport-ItemIEs} }

BSSToReport-ItemIEs XWAP-PROTOCOL-IES ::= {
    { ID id-BSSToReport-Item    CRITICALITY ignore    TYPE BSSToReport-Item    PRESENCE mandatory}
}

BSSToReport-Item ::= SEQUENCE {
    bSSID                    BSSID,
    iE-Extensions           ProtocolExtensionContainer { {BSSToReport-Item-ExtIEs} } OPTIONAL,
    ...
}

BSSToReport-Item-ExtIEs XWAP-PROTOCOL-EXTENSION ::= {
    ...
}

-- C

CapacityValue ::= INTEGER (0..100)

Cause ::= CHOICE {
    radioNetwork           CauseRadioNetwork,
    transport              CauseTransport,
    protocol               CauseProtocol,
    misc                   CauseMisc,
    ...
}

CauseMisc ::= ENUMERATED {
    control-processing-overload,
    hardware-failure,
    om-intervention,
    not-enough-user-plane-processing-resources,
    unspecified,
    ...
}

CauseProtocol ::= ENUMERATED {
    transfer-syntax-error,
    abstract-syntax-error-reject,
    abstract-syntax-error-ignore-and-notify,
    message-not-compatible-with-receiver-state,
    semantic-error,
}

```

```

    unspecified,
    abstract-syntax-error-falsely-constructed-message,
    ...
}

CauseRadioNetwork ::= ENUMERATED {
    unknown-eNB-UE-XwAP-ID,
    unknown-WT-UE-XwAP-ID,
    unknown-pair-of-UE-XwAP-ID,
    wLAN-not-available,
    security-failure,
    reportCharacteristicsEmpty,
    existing-Measurement-ID,
    unknown-Measurement-ID,
    measurement-temporarily-not-available,
    unspecified,
    multiple-E-RAB-ID-instances,
    switch-off-ongoing,
    not-supported-QCI-value,
    measurement-not-supported-for-the-object,
    reduce-load,
    resource-optimisation,
    target-not-allowed,
    no-radio-resources-available,
    invalid-QoS-combination,
    procedure-cancelled,
    radio-connection-with-UE-lost,
    failure-in-the-radio-interface-procedure,
    ...
}

CauseTransport ::= ENUMERATED {
    transport-resource-unavailable,
    unspecified,
    ...
}

ChannelUtilization ::= INTEGER (0..255)

CompleteFailureCauseInformation-List ::= SEQUENCE (SIZE (1..maxnoofBSSs)) OF ProtocolIE-SingleContainer { {CompleteFailureCauseInformation-ItemIEs}
}

CompleteFailureCauseInformation-ItemIEs XWAP-PROTOCOL-IES ::= {
    { ID id-CompleteFailureCauseInformation-Item    CRITICALITY ignore    TYPE CompleteFailureCauseInformation-Item    PRESENCE mandatory}
}

CompleteFailureCauseInformation-Item ::= SEQUENCE {
    bSSID                                     BSSID,
    measurementFailureCause-List             MeasurementFailureCause-List,
    iE-Extensions                             ProtocolExtensionContainer { { CompleteFailureCauseInformation-Item-ExtIEs} } OPTIONAL,
    ...
}

CompleteFailureCauseInformation-Item-ExtIEs XWAP-PROTOCOL-EXTENSION ::= {

```

```

}
...
}
CriticalityDiagnostics ::= SEQUENCE {
  procedureCode          ProcedureCode          OPTIONAL,
  triggeringMessage      TriggeringMessage      OPTIONAL,
  procedureCriticality   Criticality            OPTIONAL,
  iEsCriticalityDiagnostics CriticalityDiagnostics-IE-List OPTIONAL,
  iE-Extensions         ProtocolExtensionContainer {{CriticalityDiagnostics-ExtIEs}} OPTIONAL,
  ...
}
CriticalityDiagnostics-ExtIEs XWAP-PROTOCOL-EXTENSION ::= {
  ...
}
CriticalityDiagnostics-IE-List ::= SEQUENCE (SIZE (1.. maxnoofErrors)) OF CriticalityDiagnostics-IE-Item
CriticalityDiagnostics-IE-Item ::= SEQUENCE {
  iECriticality          Criticality,
  iE-ID                  ProtocolIE-ID,
  typeOfError            TypeOfError,
  iE-Extensions         ProtocolExtensionContainer {{CriticalityDiagnostics-IE-Item-ExtIEs}} OPTIONAL,
  ...
}
CriticalityDiagnostics-IE-Item-ExtIEs XWAP-PROTOCOL-EXTENSION ::= {
  ...
}
-- E
ENB-ID ::= CHOICE {
  macroENB-ID           BIT STRING (SIZE(20)),
  otherENB-ID           ProtocolIE-SingleContainer { {OtherENB-IDIEs} },
  ...
}
E-RAB-ID ::= INTEGER (0..15, ...)
E-RAB-List ::= SEQUENCE (SIZE(1.. maxnoofBearers)) OF ProtocolIE-SingleContainer { {E-RAB-ItemIEs} }
E-RAB-ItemIEs XWAP-PROTOCOL-IES ::= {
  { ID id-E-RAB-Item  CRITICALITY ignore  TYPE E-RAB-Item  PRESENCE mandatory },
  ...
}
E-RAB-Item ::= SEQUENCE {
  e-RAB-ID              E-RAB-ID,
  cause                 Cause,
  iE-Extensions         ProtocolExtensionContainer { {E-RAB-Item-ExtIEs} } OPTIONAL,
  ...
}

```

```

E-RAB-Item-ExtIEs XWAP-PROTOCOL-EXTENSION ::= {
    ...
}

E-RAB-QoS-Parameters ::= SEQUENCE {
    qCI                               QCI,
    allocationRetentionPriority       AllocationAndRetentionPriority,
    gbrQosInformation                 GBR-QosInformation OPTIONAL,
    iE-Extensions                     ProtocolExtensionContainer { {E-RAB-QoS-Parameters-ExtIEs} } OPTIONAL,
    ...
}

E-RAB-QoS-Parameters-ExtIEs XWAP-PROTOCOL-EXTENSION ::= {
    ...
}

-- G

GBR-QosInformation ::= SEQUENCE {
    e-RAB-MaximumBitrateDL           BitRate,
    e-RAB-GuaranteedBitrateDL        BitRate,
    iE-Extensions                     ProtocolExtensionContainer { { GBR-QosInformation-ExtIEs} } OPTIONAL,
    ...
}

GBR-QosInformation-ExtIEs XWAP-PROTOCOL-EXTENSION ::= {
    ...
}

Global-ENB-ID ::= SEQUENCE {
    plMNidentity                      PLMN-Identity,
    eNB-ID                             ENB-ID,
    iE-Extensions                     ProtocolExtensionContainer { {GlobalENB-ID-ExtIEs} } OPTIONAL,
    ...
}

GlobalENB-ID-ExtIEs XWAP-PROTOCOL-EXTENSION ::= {
    ...
}

GTPtunnelEndpoint ::= SEQUENCE {
    transportLayerAddress             TransportLayerAddress,
    gTP-TEID                          GTP-TEID,
    iE-Extensions                     ProtocolExtensionContainer { {GTPtunnelEndpoint-ExtIEs} } OPTIONAL,
    ...
}

GTPtunnelEndpoint-ExtIEs XWAP-PROTOCOL-EXTENSION ::= {
    ...
}

GTP-TEID ::= OCTET STRING (SIZE (4))

```

```

-- H
HESSID ::= OCTET STRING (SIZE(6))

-- M
Measurement-ID ::= INTEGER (1..4095, ...)

MeasurementInitiationResult-List ::= SEQUENCE (SIZE (1.. maxnoofBSSs)) OF ProtocolIE-SingleContainer { { MeasurementInitiationResult-ItemIEs } }

MeasurementInitiationResult-ItemIEs XWAP-PROTOCOL-IES ::= {
  { ID id-MeasurementInitiationResult-Item    CRITICALITY ignore  TYPE MeasurementInitiationResult-Item  PRESENCE mandatory}
}

MeasurementInitiationResult-Item ::= SEQUENCE {
  bSSID                BSSID,
  measurementFailureCause-List      MeasurementFailureCause-List  OPTIONAL,
  iE-Extensions        ProtocolExtensionContainer { { MeasurementInitiationResult-Item-ExtIEs } }  OPTIONAL,
  ...
}

MeasurementInitiationResult-Item-ExtIEs XWAP-PROTOCOL-EXTENSION ::= {
  ...
}

MeasurementFailureCause-List ::= SEQUENCE (SIZE (1..maxnoofFailedMeasObjects)) OF ProtocolIE-SingleContainer { { MeasurementFailureCause-ItemIEs } }

MeasurementFailureCause-ItemIEs XWAP-PROTOCOL-IES ::= {
  { ID id-MeasurementFailureCause-Item    CRITICALITY ignore  TYPE MeasurementFailureCause-Item  PRESENCE mandatory}
}

MeasurementFailureCause-Item ::= SEQUENCE {
  measurementFailedReportCharacteristics      ReportCharacteristics,
  cause                                       Cause,
  iE-Extensions        ProtocolExtensionContainer { { MeasurementFailureCause-Item-ExtIEs } }  OPTIONAL,
  ...
}

MeasurementFailureCause-Item-ExtIEs XWAP-PROTOCOL-EXTENSION ::= {
  ...
}

MobilitySet ::= SEQUENCE (SIZE (1..maxnoofMobilitySetItems)) OF MobilitySetItem

MobilitySetItem ::= SEQUENCE {
  bSSID                BSSID                OPTIONAL,
  sSID                 SSID                  OPTIONAL,
  hESSID               HESSID               OPTIONAL,
  iE-Extensions        ProtocolExtensionContainer { { MobilitySetItem-ExtIEs } }  OPTIONAL,
  ...
}

MobilitySetItem-ExtIEs XWAP-PROTOCOL-EXTENSION ::= {

```



```
    ...
}

-- O
OtherENB-IDIEs XWAP-PROTOCOL-IES ::= {
    ...
}

-- P

PartialSuccessIndicator ::= ENUMERATED {
    partial-success-allowed, ...
}

PLMN-Identity ::= OCTET STRING (SIZE(3))

Pre-emptionCapability ::= ENUMERATED {
    shall-not-trigger-pre-emption,
    may-trigger-pre-emption
}

Pre-emptionVulnerability ::= ENUMERATED {
    not-pre-emptable,
    pre-emptable
}

PriorityLevel ::= INTEGER { spare (0), highest (1), lowest (14), no-priority (15) } (0..15)

-- Q

QCI ::= INTEGER (0..255)

-- R

Registration-Request ::= ENUMERATED {
    start,
    stop,
    ...
}

ReportCharacteristics ::= BIT STRING (SIZE (32))

ReportingPeriodicity ::= ENUMERATED {
    ms10, ms50, ms100, ms200, ms500, s1, s5, s10, ...
}

-- S

SSID ::= OCTET STRING (SIZE (1..32))

StationCount ::= INTEGER (0..65535)
```

```

-- T
TransportLayerAddress ::= BIT STRING (SIZE(1..160, ...))

TypeOfError ::= ENUMERATED {
    not-understood,
    missing,
    ...
}

-- U
UE-Identity ::= OCTET STRING (SIZE (6))
UE-XwAP-ID ::= OCTET STRING (SIZE (3))

-- W
WANMetrics ::= SEQUENCE {
    wlan-Backhaul-Rate-DL      WLAN-Backhaul-Rate,
    wlan-Backhaul-Rate-UL      WLAN-Backhaul-Rate,
    wanChannelUtilization-DL   ChannelUtilization,
    wanChannelUtilization-UL   ChannelUtilization,
    iE-Extensions              ProtocolExtensionContainer { { WANMetrics-Item-ExtIEs } } OPTIONAL,
    ...
}

WANMetrics-Item-ExtIEs XWAP-PROTOCOL-EXTENSION ::= {
    ...
}

WLAN-Backhaul-Rate ::= ENUMERATED {r0, r4, r8, r16, r32, r64, r128, r256, r512, r1024, r2048, r4096, r8192, r16384, r32768, r65536, r131072,
r262144, r524288, r1048576, r2097152, r4194304, r8388608, r16777216, r33554432, r67108864, r134217728, r268435456, r536870912, r1073741824,
r2147483648, r4294967296}

WLANband ::= ENUMERATED {band2dot4, band5, ...}

WLANBandInformationList ::= SEQUENCE (SIZE (1..maxnoofBands)) OF ProtocolIE-SingleContainer { { WLANBandInformation-ItemIEs } }

WLANBandInformation-ItemIEs XWAP-PROTOCOL-IES ::= {
    { ID id-wLANBandInformation    CRITICALITY ignore    TYPE WLANBandInformation    PRESENCE mandatory},
    ...
}

WLANBandInformation ::= CHOICE {
    band                WLANband,
    channelnumber       WLANchannelnumber,
    ...
}

WLANchannelnumber ::= INTEGER (0..255)
WLANOperatingClass ::= INTEGER (0..255)

```

```

WLANCountryCode ::= ENUMERATED {
    unitedStates,
    europe,
    japan,
    global,
    ...
}

WLANIdentifier-List ::= SEQUENCE (SIZE (1.. maxnoofWLANIdentifierItems)) OF ProtocolIE-SingleContainer { { WLANIdentifier-ItemIEs} }

WLANIdentifier-ItemIEs XWAP-PROTOCOL-IES ::= {
    { ID id-WLANIdentifier-Item CRITICALITY ignore TYPE WLANIdentifier-Item PRESENCE mandatory},
    ...
}

WLANIdentifier-Item ::= SEQUENCE {
    wlanInformation WLANInformation,
    iE-Extensions ProtocolExtensionContainer { { WLANIdentifier-Item-ExtIEs} } OPTIONAL,
    ...
}

WLANIdentifier-Item-ExtIEs XWAP-PROTOCOL-EXTENSION ::= {
    ...
}

WLANIdentifiersToDelete-List ::= SEQUENCE (SIZE (1.. maxnoofWLANIdentifierItems)) OF ProtocolIE-SingleContainer { { WLANIdentifiersToDelete-ItemIEs} }

WLANIdentifiersToDelete-ItemIEs XWAP-PROTOCOL-IES ::= {
    { ID id-WLANIdentifiersToDelete-Item CRITICALITY ignore TYPE WLANIdentifiersToDelete-Item PRESENCE mandatory}
}

WLANIdentifiersToDelete-Item ::= SEQUENCE {
    bSSID BSSID,
    iE-Extensions ProtocolExtensionContainer { { WLANIdentifiersToDelete-Item-ExtIEs} } OPTIONAL,
    ...
}

WLANIdentifiersToDelete-Item-ExtIEs XWAP-PROTOCOL-EXTENSION ::= {
    ...
}

WLANInformation ::= SEQUENCE {
    bSS-Item BSS-Item OPTIONAL,
    sSID SSID OPTIONAL,
    hESSID HESSID OPTIONAL,
    iE-Extensions ProtocolExtensionContainer { { WLANInformation-ExtIEs} } OPTIONAL,
    ...
}

WLANInformation-ExtIEs XWAP-PROTOCOL-EXTENSION ::= {
    ...
}

```

```

WLANSecurityInfo ::= SEQUENCE {
    wT-Security-Key      BIT STRING (SIZE(256)),
    iE-Extensions       ProtocolExtensionContainer { { WLANSecurityInfo-Item-ExtIEs } } OPTIONAL,
    ...
}

WLANSecurityInfo-Item-ExtIEs XWAP-PROTOCOL-EXTENSION ::= {
    ...
}

WTID ::= CHOICE {
    wTID-Type1          WTID-Type1,
    wTID-Type2          WTID-Long-Type2,
    ...
}

WTID-Type1 ::= SEQUENCE {
    pLMN-Identity       PLMN-Identity,
    shortWTID           BIT STRING (SIZE(24)),
    ...
}

WTID-Long-Type2 ::= BIT STRING (SIZE(48))

END

```

9.3.6 Common definitions

```

-- *****
--
-- Common definitions
--
-- *****

XwAP-CommonDataTypes {
itu-t (0) identified-organization (4) etsi (0) mobileDomain (0)
eps-Access (21) modules (3) xwap (8) version1 (1) xwap-CommonDataTypes (3) }

DEFINITIONS AUTOMATIC TAGS ::=

BEGIN

-- *****
--
-- IE parameter types from other modules.
--
-- *****

IMPORTS
    maxPrivateIEs,

```

```

    maxProtocolExtensions,
    maxProtocolIEs

FROM XwAP-Constants;

-- *****
--
-- Common Data Types
--
-- *****

Criticality ::= ENUMERATED { reject, ignore, notify }

Presence ::= ENUMERATED { optional, conditional, mandatory }

PrivateIE-ID ::= CHOICE {
    local          INTEGER (0.. maxPrivateIEs),
    global         OBJECT IDENTIFIER
}

ProcedureCode ::= INTEGER (0..255)

ProtocolExtensionID ::= INTEGER (0.. maxProtocolExtensions)

ProtocolIE-ID ::= INTEGER (0.. maxProtocolIEs)

TriggeringMessage ::= ENUMERATED { initiating-message, successful-outcome, unsuccessful-outcome }
END

```

9.3.7 Constant definitions

```

-- *****
--
-- Constant definitions
--
-- *****

XwAP-Constants {
itu-t (0) identified-organization (4) etsi (0) mobileDomain (0)
eps-Access (21) modules (3) xwap (8) version1 (1) xwap-Constants (4) }

DEFINITIONS AUTOMATIC TAGS ::=

BEGIN

-- *****
--
-- IE parameter types from other modules.
--
-- *****

IMPORTS
    ProcedureCode,

```

```
ProtocolIE-ID
FROM XwAP-CommonDataTypes;

-- *****
--
-- Elementary Procedures
--
-- *****

id-xwSetup                ProcedureCode ::= 0
id-wTConfigurationUpdate  ProcedureCode ::= 1
id-wTStatusReportingInitiation ProcedureCode ::= 2
id-wTStatusReporting      ProcedureCode ::= 3
id-errorIndication        ProcedureCode ::= 4
id-reset                  ProcedureCode ::= 5
id-wTAdditionPreparation  ProcedureCode ::= 6
id-eNBInitiatedWTModification ProcedureCode ::= 7
id-wTInitiatedWTModification ProcedureCode ::= 8
id-eNBInitiatedWTRelease  ProcedureCode ::= 9
id-wTInitiatedWTRelease   ProcedureCode ::= 10
id-wTAssociationConfirmation ProcedureCode ::= 11
id-privateMessage         ProcedureCode ::= 12

-- *****
--
-- Extension constants
--
-- *****

maxPrivateIEs             INTEGER ::= 65535
maxProtocolExtensions     INTEGER ::= 65535
maxProtocolIEs           INTEGER ::= 65535

-- *****
--
-- Lists
--
-- *****

maxnoofBands              INTEGER ::= 256
maxnoofBearers            INTEGER ::= 256
maxnoofBSSs               INTEGER ::= 4096
maxnoofErrors             INTEGER ::= 256
maxnoofFailedMeasObjects  INTEGER ::= 32
maxnoofMobilitySetItems   INTEGER ::= 1024
maxnoofWLANIdentifierItems INTEGER ::= 4096

-- *****
--
```

```
-- IEs
--
-- *****

id-BSSMeasurementResult-Item          ProtocolIE-ID ::= 0
id-BSSMeasurementResult-List          ProtocolIE-ID ::= 1
id-BSSToReport-Item                   ProtocolIE-ID ::= 2
id-BSSToReport-List                   ProtocolIE-ID ::= 3
id-Cause                              ProtocolIE-ID ::= 4
id-CompleteFailureCauseInformation-Item ProtocolIE-ID ::= 5
id-CompleteFailureCauseInformation-List ProtocolIE-ID ::= 6
id-CriticalityDiagnostics              ProtocolIE-ID ::= 7
id-ENB-Measurement-ID                 ProtocolIE-ID ::= 8
id-Global-ENB-ID                      ProtocolIE-ID ::= 9
id-MeasurementFailureCause-Item        ProtocolIE-ID ::= 10
id-MeasurementInitiationResult-Item     ProtocolIE-ID ::= 11
id-MeasurementInitiationResult-List     ProtocolIE-ID ::= 12
id-PartialSuccessIndicator             ProtocolIE-ID ::= 13
id-Registration-Request                ProtocolIE-ID ::= 14
id-ReportCharacteristics                ProtocolIE-ID ::= 15
id-ReportingPeriodicity                ProtocolIE-ID ::= 16
id-WLANIdentifier-Item                 ProtocolIE-ID ::= 17
id-WLANIdentifier-List                 ProtocolIE-ID ::= 18
id-WLANIdentifiersToAdd-List           ProtocolIE-ID ::= 19
id-WLANIdentifiersToDelete-Item        ProtocolIE-ID ::= 20
id-WLANIdentifiersToDelete-List        ProtocolIE-ID ::= 21
id-WLANIdentifiersToModify-List        ProtocolIE-ID ::= 22
id-WTID                                ProtocolIE-ID ::= 23
id-WT-Measurement-ID                   ProtocolIE-ID ::= 24
id-ENB-UE-XwAP-ID                      ProtocolIE-ID ::= 25
id-WT-UE-XwAP-ID                       ProtocolIE-ID ::= 26
id-BSS-Item                             ProtocolIE-ID ::= 27
id-E-RABs-ToBeAdded-List               ProtocolIE-ID ::= 28
id-E-RABs-ToBeAdded-Item               ProtocolIE-ID ::= 29
id-UE-Identity                          ProtocolIE-ID ::= 30
id-WLANSecurityInfo                    ProtocolIE-ID ::= 31
id-E-RABs-Admitted-ToBeAdded-List      ProtocolIE-ID ::= 32
id-E-RABs-Admitted-ToBeAdded-Item      ProtocolIE-ID ::= 33
id-E-RABs-NotAdmitted-List             ProtocolIE-ID ::= 34
id-E-RAB-Item                           ProtocolIE-ID ::= 35
id-UE-ContextInformationWTModReq        ProtocolIE-ID ::= 36
id-E-RABs-ToBeAdded-ModReqItem          ProtocolIE-ID ::= 37
id-E-RABs-ToBeModified-ModReqItem       ProtocolIE-ID ::= 38
id-E-RABs-ToBeReleased-ModReqItem       ProtocolIE-ID ::= 39
id-E-RABs-Admitted-ToBeAdded-ModAckList ProtocolIE-ID ::= 40
id-E-RABs-Admitted-ToBeAdded-ModAckItem ProtocolIE-ID ::= 41
id-E-RABs-Admitted-ToBeModified-ModAckList ProtocolIE-ID ::= 42
id-E-RABs-Admitted-ToBeModified-ModAckItem ProtocolIE-ID ::= 43
id-E-RABs-Admitted-ToBeReleased-ModAckList ProtocolIE-ID ::= 44
id-E-RABs-Admitted-ToBeReleased-ModAckItem ProtocolIE-ID ::= 45
id-E-RABs-ToBeReleased-ModReqdList      ProtocolIE-ID ::= 46
id-E-RABs-ToBeReleased-ModReqdItem      ProtocolIE-ID ::= 47
id-E-RABs-ToBeReleased-List-RelReq      ProtocolIE-ID ::= 48
id-E-RABs-ToBeReleased-RelReqItem       ProtocolIE-ID ::= 49
```

```

id-E-RABs-ToBeReleased-List-RelConf      ProtocolIE-ID ::= 50
id-E-RABs-ToBeReleased-RelConfItem       ProtocolIE-ID ::= 51
id-E-RABs-Confirmed-ToBeReleased-ModReqdList ProtocolIE-ID ::= 52
id-E-RABs-Confirmed-ToBeReleased-ModReqdItem ProtocolIE-ID ::= 53
id-MobilitySet                            ProtocolIE-ID ::= 54
id-ServingPLMN                            ProtocolIE-ID ::= 55
id-E-RABs-ToBeModified-ModReqdList       ProtocolIE-ID ::= 56
id-E-RABs-ToBeModified-ModReqdItem       ProtocolIE-ID ::= 57
id-E-RABs-Confirmed-ToBeModified-ModReqdList ProtocolIE-ID ::= 58
id-E-RABs-Confirmed-ToBeModified-ModReqdItem ProtocolIE-ID ::= 59
id-wLANBandInformation                   ProtocolIE-ID ::= 60

```

END

9.3.8 Container definitions

```

-- *****
--
-- Container definitions
--
-- *****

XwAP-Containers {
itu-t (0) identified-organization (4) etsi (0) mobileDomain (0)
eps-Access (21) modules (3) xwap (8) version1 (1) xwap-Containers (5) }

DEFINITIONS AUTOMATIC TAGS ::=

BEGIN

-- *****
--
-- IE parameter types from other modules.
--
-- *****

IMPORTS
    Criticality,
    Presence,
    PrivateIE-ID,
    ProtocolExtensionID,
    ProtocolIE-ID
FROM XwAP-CommonDataTypes

    maxPrivateIEs,
    maxProtocolExtensions,
    maxProtocolIEs
FROM XwAP-Constants;

-- *****
--
-- Class Definition for Protocol IEs
--

```



```

-- *****
XWAP-PROTOCOL-IES ::= CLASS {
    &id          ProtocolIE-ID          UNIQUE,
    &criticality Criticality,
    &Value,
    &presence    Presence
}
WITH SYNTAX {
    ID          &id
    CRITICALITY &criticality
    TYPE       &Value
    PRESENCE   &presence
}

-- *****
--
-- Class Definition for Protocol IEs
--
-- *****

XWAP-PROTOCOL-IES-PAIR ::= CLASS {
    &id          ProtocolIE-ID          UNIQUE,
    &firstCriticality Criticality,
    &FirstValue,
    &secondCriticality Criticality,
    &SecondValue,
    &presence    Presence
}
WITH SYNTAX {
    ID          &id
    FIRST CRITICALITY &firstCriticality
    FIRST TYPE      &FirstValue
    SECOND CRITICALITY &secondCriticality
    SECOND TYPE     &SecondValue
    PRESENCE       &presence
}

-- *****
--
-- Class Definition for Protocol Extensions
--
-- *****

XWAP-PROTOCOL-EXTENSION ::= CLASS {
    &id          ProtocolExtensionID    UNIQUE,
    &criticality Criticality,
    &Extension,
    &presence    Presence
}
WITH SYNTAX {
    ID          &id
    CRITICALITY &criticality
    EXTENSION   &Extension
}

```

```

    PRESENCE      &presence
}
-- *****
--
-- Class Definition for Private IES
--
-- *****

XWAP-PRIVATE-IES ::= CLASS {
    &id            PrivateIE-ID,
    &criticality   Criticality,
    &Value,
    &presence      Presence
}
WITH SYNTAX {
    ID             &id
    CRITICALITY    &criticality
    TYPE           &Value
    PRESENCE       &presence
}
-- *****
--
-- Container for Protocol IES
--
-- *****

ProtocolIE-Container { XWAP-PROTOCOL-IES : IESSetParam } ::=
    SEQUENCE (SIZE (0..maxProtocolIES)) OF
        ProtocolIE-Field {{IESSetParam}}

ProtocolIE-SingleContainer { XWAP-PROTOCOL-IES : IESSetParam } ::=
    ProtocolIE-Field {{IESSetParam}}

ProtocolIE-Field { XWAP-PROTOCOL-IES : IESSetParam } ::= SEQUENCE {
    id                XWAP-PROTOCOL-IES.&id                ({IESSetParam}),
    criticality       XWAP-PROTOCOL-IES.&criticality        ({IESSetParam}@id}),
    value             XWAP-PROTOCOL-IES.&Value              ({IESSetParam}@id)}
}
-- *****
--
-- Container for Protocol IE Pairs
--
-- *****

ProtocolIE-ContainerPair { XWAP-PROTOCOL-IES-PAIR : IESSetParam } ::=
    SEQUENCE (SIZE (0..maxProtocolIES)) OF
        ProtocolIE-FieldPair {{IESSetParam}}

ProtocolIE-FieldPair { XWAP-PROTOCOL-IES-PAIR : IESSetParam } ::= SEQUENCE {
    id                XWAP-PROTOCOL-IES-PAIR.&id            ({IESSetParam}),
    firstCriticality  XWAP-PROTOCOL-IES-PAIR.&firstCriticality ({IESSetParam}@id)},

```

```

    firstValue      XWAP-PROTOCOL-IES-PAIR.&FirstValue      ({IEsSetParam}{@id}),
    secondCriticality XWAP-PROTOCOL-IES-PAIR.&secondCriticality ({IEsSetParam}{@id}),
    secondValue      XWAP-PROTOCOL-IES-PAIR.&SecondValue      ({IEsSetParam}{@id})
}

-- *****
--
-- Container Lists for Protocol IE Containers
--
-- *****

ProtocolIE-ContainerList { INTEGER : lowerBound, INTEGER : upperBound, XWAP-PROTOCOL-IES : IEsSetParam } ::=
    SEQUENCE (SIZE (lowerBound..upperBound)) OF
        ProtocolIE-SingleContainer {{IEsSetParam}}

ProtocolIE-ContainerPairList { INTEGER : lowerBound, INTEGER : upperBound, XWAP-PROTOCOL-IES-PAIR : IEsSetParam } ::=
    SEQUENCE (SIZE (lowerBound..upperBound)) OF
        ProtocolIE-ContainerPair {{IEsSetParam}}

-- *****
--
-- Container for Protocol Extensions
--
-- *****

ProtocolExtensionContainer { XWAP-PROTOCOL-EXTENSION : ExtensionSetParam } ::=
    SEQUENCE (SIZE (1..maxProtocolExtensions)) OF
        ProtocolExtensionField {{ExtensionSetParam}}

ProtocolExtensionField { XWAP-PROTOCOL-EXTENSION : ExtensionSetParam } ::= SEQUENCE {
    id                XWAP-PROTOCOL-EXTENSION.&id                ({ExtensionSetParam}),
    criticality        XWAP-PROTOCOL-EXTENSION.&criticality        ({ExtensionSetParam}{@id}),
    extensionValue     XWAP-PROTOCOL-EXTENSION.&Extension         ({ExtensionSetParam}{@id})
}

-- *****
--
-- Container for Private IEs
--
-- *****

PrivateIE-Container { XWAP-PRIVATE-IES : IEsSetParam } ::=
    SEQUENCE (SIZE (1.. maxPrivateIEs)) OF
        PrivateIE-Field {{IEsSetParam}}

PrivateIE-Field { XWAP-PRIVATE-IES : IEsSetParam } ::= SEQUENCE {
    id                XWAP-PRIVATE-IES.&id                ({IEsSetParam}),
    criticality        XWAP-PRIVATE-IES.&criticality        ({IEsSetParam}{@id}),
    value              XWAP-PRIVATE-IES.&Value              ({IEsSetParam}{@id})
}
END

```

9.4 Message transfer syntax

XwAP shall use the ASN.1 Basic Packed Encoding Rules (BASIC-PER) Aligned Variant as transfer syntax, as specified in ITU-T Rec. X.691 [5].

10 Handling of unknown, unforeseen and erroneous protocol data

Section 10 of TS 36.413 [8] is applicable for the purposes of the present document.

Annex A (informative): Change history

Change history							
Date	TSG #	TSG Doc.	CR	Rev	Cat	Subject/Comment	New
9/2015						Initial skeleton	0.0.1
10/2015						Inclusion of text proposals agreed at RAN WG3#89bis	0.0.2
11/2015						Editorial revisions and corrections	0.0.3
11/2015						Inclusion of text proposals agreed at RAN WG3#90	0.0.4
12/2015	RAN#70					Presentation to RAN#70 for information	1.0.0
01/2016						Editorial revisions and corrections	1.1.0
01/2016						Inclusion of text proposals agreed at RAN WG3 Adhoc NBIoT	1.2.0
02/2016						Editorial revisions and corrections	1.3.0
02/2016						Inclusion of text proposals agreed at RAN WG3#91	1.4.0
03/2016	RAN#71					Presentation to RAN#71 for approval	2.0.0
03/2016	RAN#71					Upgraded to Rel-13 and placed under change control	13.0.0

History

Document history		
V13.0.0	April 2016	Publication