

ETSI TS 136 459 V18.0.0 (2024-05)



**LTE;
Evolved Universal Terrestrial
Radio Access Network (E-UTRAN);
SLm interface Application Protocol (SLmAP)
(3GPP TS 36.459 version 18.0.0 Release 18)**



Reference

RTS/TSGR-0336459vi00

Keywords

LTE

ETSI

650 Route des Lucioles
F-06921 Sophia Antipolis Cedex - FRANCE

Tel.: +33 4 92 94 42 00 Fax: +33 4 93 65 47 16

Siret N° 348 623 562 00017 - APE 7112B
Association à but non lucratif enregistrée à la
Sous-Préfecture de Grasse (06) N° w061004871

Important notice

The present document can be downloaded from:

<https://www.etsi.org/standards-search>

The present document may be made available in electronic versions and/or in print. The content of any electronic and/or print versions of the present document shall not be modified without the prior written authorization of ETSI. In case of any existing or perceived difference in contents between such versions and/or in print, the prevailing version of an ETSI deliverable is the one made publicly available in PDF format at www.etsi.org/deliver.

Users of the present document should be aware that the document may be subject to revision or change of status.

Information on the current status of this and other ETSI documents is available at

<https://portal.etsi.org/TB/ETSIDeliverableStatus.aspx>

If you find errors in the present document, please send your comment to one of the following services:

<https://portal.etsi.org/People/CommitteeSupportStaff.aspx>

If you find a security vulnerability in the present document, please report it through our
Coordinated Vulnerability Disclosure Program:

<https://www.etsi.org/standards/coordinated-vulnerability-disclosure>

Notice of disclaimer & limitation of liability

The information provided in the present deliverable is directed solely to professionals who have the appropriate degree of experience to understand and interpret its content in accordance with generally accepted engineering or other professional standard and applicable regulations.

No recommendation as to products and services or vendors is made or should be implied.

No representation or warranty is made that this deliverable is technically accurate or sufficient or conforms to any law and/or governmental rule and/or regulation and further, no representation or warranty is made of merchantability or fitness for any particular purpose or against infringement of intellectual property rights.

In no event shall ETSI be held liable for loss of profits or any other incidental or consequential damages.

Any software contained in this deliverable is provided "AS IS" with no warranties, express or implied, including but not limited to, the warranties of merchantability, fitness for a particular purpose and non-infringement of intellectual property rights and ETSI shall not be held liable in any event for any damages whatsoever (including, without limitation, damages for loss of profits, business interruption, loss of information, or any other pecuniary loss) arising out of or related to the use of or inability to use the software.

Copyright Notification

No part may be reproduced or utilized in any form or by any means, electronic or mechanical, including photocopying and microfilm except as authorized by written permission of ETSI.

The content of the PDF version shall not be modified without the written authorization of ETSI.

The copyright and the foregoing restriction extend to reproduction in all media.

© ETSI 2024.
All rights reserved.

Intellectual Property Rights

Essential patents

IPRs essential or potentially essential to normative deliverables may have been declared to ETSI. The declarations pertaining to these essential IPRs, if any, are publicly available for **ETSI members and non-members**, and can be found in ETSI SR 000 314: "*Intellectual Property Rights (IPRs); Essential, or potentially Essential, IPRs notified to ETSI in respect of ETSI standards*", which is available from the ETSI Secretariat. Latest updates are available on the ETSI Web server (<https://ipr.etsi.org/>).

Pursuant to the ETSI Directives including the ETSI IPR Policy, no investigation regarding the essentiality of IPRs, including IPR searches, has been carried out by ETSI. No guarantee can be given as to the existence of other IPRs not referenced in ETSI SR 000 314 (or the updates on the ETSI Web server) which are, or may be, or may become, essential to the present document.

Trademarks

The present document may include trademarks and/or tradenames which are asserted and/or registered by their owners. ETSI claims no ownership of these except for any which are indicated as being the property of ETSI, and conveys no right to use or reproduce any trademark and/or tradename. Mention of those trademarks in the present document does not constitute an endorsement by ETSI of products, services or organizations associated with those trademarks.

DECT™, **PLUGTESTS™**, **UMTS™** and the ETSI logo are trademarks of ETSI registered for the benefit of its Members. **3GPP™** and **LTE™** are trademarks of ETSI registered for the benefit of its Members and of the 3GPP Organizational Partners. **oneM2M™** logo is a trademark of ETSI registered for the benefit of its Members and of the oneM2M Partners. **GSM®** and the GSM logo are trademarks registered and owned by the GSM Association.

Legal Notice

This Technical Specification (TS) has been produced by ETSI 3rd Generation Partnership Project (3GPP).

The present document may refer to technical specifications or reports using their 3GPP identities. These shall be interpreted as being references to the corresponding ETSI deliverables.

The cross reference between 3GPP and ETSI identities can be found under <https://webapp.etsi.org/key/queryform.asp>.

Modal verbs terminology

In the present document "**shall**", "**shall not**", "**should**", "**should not**", "**may**", "**need not**", "**will**", "**will not**", "**can**" and "**cannot**" are to be interpreted as described in clause 3.2 of the [ETSI Drafting Rules](#) (Verbal forms for the expression of provisions).

"**must**" and "**must not**" are **NOT** allowed in ETSI deliverables except when used in direct citation.

Contents

Intellectual Property Rights	2
Legal Notice	2
Modal verbs terminology.....	2
Foreword.....	5
1 Scope	6
2 References	6
3 Definitions, symbols and abbreviations	6
3.1 Definitions	6
3.2 Symbols.....	7
3.3 Abbreviations	7
4 General	7
4.1 Procedure Specification Principles.....	7
4.2 Forwards and Backwards Compatibility	8
4.3 Specification Notations	8
5 SLMAP Services	8
6 Services Expected from Signalling Transport.....	8
7 Functions of SLMAP	9
8 SLMAP Procedures	9
8.1 List of SLMAP Elementary procedures.....	9
8.2 Measurement Procedures	10
8.2.1 Measurement.....	10
8.2.1.1 General	10
8.2.1.2 Successful Operation.....	10
8.2.1.3 Unsuccessful Operation	10
8.2.1.4 Abnormal Conditions	10
8.2.2 Measurement Update	11
8.2.2.1 General	11
8.2.2.2 Successful Operation.....	11
8.2.2.3 Unsuccessful Operation	11
8.2.2.4 Abnormal Conditions	11
8.2.3 Measurement Abort	11
8.2.3.1 General	11
8.2.3.2 Successful Operation.....	12
8.2.3.3 Unsuccessful Operation	12
8.2.3.4 Abnormal Conditions	12
8.3 Management procedures.....	12
8.3.1 SLM Setup	12
8.3.1.1 General	12
8.3.1.2 Successful Operation.....	12
8.3.1.3 Unsuccessful Operation	13
8.3.1.4 Abnormal Conditions	13
8.3.2 Reset	13
8.3.2.1 General	13
8.3.2.2 Successful Operation.....	13
8.3.2.2.1 Reset Procedure Initiated from the E-SMLC.....	13
8.3.2.2.2 Reset Procedure Initiated from the LMU	14
8.3.2.4 Abnormal Conditions	14
8.3.3 Error Indication.....	14
8.3.3.1 General	14
8.3.3.2 Successful Operation.....	15
9 Elements for SLMAP Communication.....	15

9.1	Message Functional Definition and Content	15
9.1.1	MEASUREMENT REQUEST	15
9.1.2	MEASUREMENT RESPONSE	15
9.1.3	MEASUREMENT FAILURE	15
9.1.4	SLm SETUP REQUEST	16
9.1.5	SLm SETUP RESPONSE	16
9.1.6	SLm SETUP FAILURE.....	16
9.1.7	RESET REQUEST	16
9.1.8	RESET ACKNOWLEDGE	17
9.1.9	MEASUREMENT ABORT	17
9.1.10	MEASUREMENT UPDATE	17
9.1.11	ERROR INDICATION.....	17
9.2	Information Element Definitions.....	18
9.2.1	General.....	18
9.2.2	Message Type	18
9.2.3	SLmAP Transaction ID	18
9.2.4	UL RTOA Measurement Configuration	18
9.2.5	UL RTOA Measurements.....	20
9.2.6	LMU ID	20
9.2.7	E-SMLC ID	21
9.2.8	LMU Information	21
9.2.9	LMU Position	21
9.2.10	Cause	22
9.2.11	Criticality Diagnostics	23
9.2.12	E-SMLC Measurement ID.....	24
9.3	Message and Information Element Abstract Syntax (with ASN.1).....	25
9.3.1	General.....	25
9.3.2	Usage of Private Message Mechanism for Non-standard Use.....	25
9.3.3	Elementary Procedure Definitions	25
9.3.4	PDU Definitions	29
9.3.5	Information Element definitions	34
9.3.6	Common definitions	39
9.3.7	Constant definitions	40
9.3.8	Container definitions.....	42
9.4	Message Transfer Syntax	45
9.5	Timers	45
10	Handling of Unknown, Unforeseen and Erroneous Protocol Data	46
Annex A (informative): Change history		47
History		48

Foreword

This Technical Specification has been produced by the 3rd Generation Partnership Project (3GPP).

The contents of the present document are subject to continuing work within the TSG and may change following formal TSG approval. Should the TSG modify the contents of the present document, it will be re-released by the TSG with an identifying change of release date and an increase in version number as follows:

Version x.y.z

where:

- x the first digit:
 - 1 presented to TSG for information;
 - 2 presented to TSG for approval;
 - 3 or greater indicates TSG approved document under change control.
- y the second digit is incremented for all changes of substance, i.e., technical enhancements, corrections, updates, etc.
- z the third digit is incremented when editorial only changes have been incorporated in the document.

1 Scope

The present document specifies the E-UTRAN radio network layer signalling protocol for the SLM interface. The SLM Application Protocol (SLM-AP) supports the functions of the SLM interface by signalling procedures defined in this document. SLM-AP is developed in accordance to the general principles stated in TS 36.305 [2] and TS 36.456 [3].

2 References

The following documents contain provisions which, through reference in this text, constitute provisions of the present document.

- References are either specific (identified by date of publication, edition number, version number, etc.) or non-specific.
- For a specific reference, subsequent revisions do not apply.
- For a non-specific reference, the latest version applies. In the case of a reference to a 3GPP document (including a GSM document), a non-specific reference implicitly refers to the latest version of that document *in the same Release as the present document*.

- [1] 3GPP TR 21.905: "Vocabulary for 3GPP Specifications".
- [2] 3GPP TS 36.305: "Stage 2 functional specification of User Equipment (UE) positioning in E-UTRAN".
- [3] 3GPP TS 36.456: "Evolved Universal Terrestrial Radio Access Network (E-UTRAN); SLM interface general aspects and principles".
- [4] 3GPP TS 36.455: "LTE Positioning Protocol A (LPPa)".
- [5] 3GPP TS 36.101: "User Equipment (UE) radio transmission and reception".
- [6] 3GPP TS 23.032: "Universal Geographical Area Description (GAD)".
- [7] 3GPP TS 36.413: " Evolved Universal Terrestrial Radio Access Network (E-UTRAN); S1 Application Protocol".
- [8] ITU-T Recommendation X.691 (2002-07): "Information technology - ASN.1 encoding rules - Specification of Packed Encoding Rules (PER)".
- [9] 3GPP TS 36.111: "Location Measurement Unit (LMU) performance specification; User Equipment (UE) positioning in E-UTRAN".
- [10] 3GPP TS 36.104: "Evolved Universal Terrestrial Radio Access Network (E-UTRAN); Base Station (BS) radio transmission and reception".
- [11] 3GPP TS 36.211: "Evolved Universal Terrestrial Radio Access Network (E-UTRAN); Physical Channels and Modulation".

3 Definitions, symbols and abbreviations

3.1 Definitions

For the purposes of the present document, the terms and definitions given in TR 21.905 [1] and the following apply. A term defined in the present document takes precedence over the definition of the same term, if any, in TR 21.905 [1].

Elementary Procedure: SLM-AP consists of Elementary Procedures (EPs). An Elementary Procedure is a unit of interaction between LMUs in the E-UTRAN and E-SMLCs in the EPC. These Elementary Procedures are defined separately and are intended to be used to build up complete sequences in a flexible manner. If the independence

between some EPs is restricted, it is described under the relevant EP description. Unless otherwise stated by the restrictions, the EPs may be invoked independently of each other as standalone procedures, which can be active in parallel. The usage of several SLmAP EPs together or together with EPs from other interfaces is specified in stage 2 specifications (e.g., TS 23.305 [2]).

An EP consists of an initiating message and possibly a response message. Two kinds of EPs are used:

- **Class 1:** Elementary Procedures with response (success and/or failure).
- **Class 2:** Elementary Procedures without response.

For Class 1 EPs, the types of responses can be as follows:

Successful:

- A signalling message explicitly indicates that the elementary procedure successfully completed with the receipt of the response.

Unsuccessful:

- A signalling message explicitly indicates that the EP failed.
- On time supervision expiry (i.e., absence of expected response).

Successful and Unsuccessful:

- One signalling message reports both successful and unsuccessful outcome for the different included requests. The response message used is the one defined for successful outcome.

Class 2 EPs are considered always successful.

3.2 Symbols

-

3.3 Abbreviations

For the purposes of the present document, the abbreviations given in TR 21.905 [1] and the following apply. An abbreviation defined in the present document takes precedence over the definition of the same abbreviation, if any, in TR 21.905 [1].

LMU	Location Measurement Unit
SLmAP	SLm Interface Application Protocol
SRS	Sounding Reference Signal
TNL	Transport Network Layer
UL RTOA	Uplink Relative Time of Arrival
UTDOA	Uplink Time Difference of Arrival

4 General

4.1 Procedure Specification Principles

The principle for specifying the procedure logic is to specify the functional behaviour of the terminating node exactly and completely. Any rule that specifies the behaviour of the originating node shall be possible to be verified with information that is visible within the system.

The following specification principles have been applied for the procedure text in clause 8:

- The procedure text discriminates between:

1) Functionality which "shall" be executed

The procedure text indicates that the receiving node "shall" perform a certain function Y under a certain condition. If the receiving node supports procedure X but cannot perform functionality Y requested in the REQUEST message of a Class 1 EP, the receiving node shall respond with the message used to report unsuccessful outcome for this procedure, containing an appropriate cause value.

2) Functionality which "shall, if supported" be executed

The procedure text indicates that the receiving node "shall, if supported," perform a certain function Y under a certain condition. If the receiving node supports procedure X, but does not support functionality Y, the receiving node shall proceed with the execution of the EP, possibly informing the requesting node about the not supported functionality.

- Any required inclusion of an optional IE in a response message is explicitly indicated in the procedure text. If the procedure text does not explicitly indicate that an optional IE shall be included in a response message, the optional IE shall not be included. For requirements on including *Criticality Diagnostics* IE, see clause 10.

4.2 Forwards and Backwards Compatibility

The forwards and backwards compatibility of the protocol is assured by mechanism where all current and future messages, and IEs or groups of related IEs, include ID and criticality fields that are coded in a standard format that will not be changed in the future. These parts can always be decoded regardless of the standard version.

4.3 Specification Notations

For the purposes of the present document, the following notations apply:

Procedure	When referring to an elementary procedure in the specification the Procedure Name is written with the first letters in each word in upper case characters followed by the word "procedure", e.g., E-RAB procedure.
Message	When referring to a message in the specification the MESSAGE NAME is written with all letters in upper case characters followed by the word "message", e.g., MESSAGE NAME message.
IE	When referring to an information element (IE) in the specification the <i>Information Element Name</i> is written with the first letters in each word in upper case characters and all letters in <i>Italic font</i> followed by the abbreviation "IE", e.g., <i>Information Element</i> IE.
Value of an IE	When referring to the value of an information element (IE) in the specification the "Value" is written as it is specified in subclause 9.2 enclosed by quotation marks, e.g., "Value".

5 SLmAP Services

SLmAP provides the signalling service between E-SMLC and the Location Measurement Unit (LMU) that is required to fulfil the SLmAP functions described in clause 7. The procedures are divided into two groups:

1. UTDOA Measurement Information Transfer procedures;
2. SLm Interface Management procedures.

6 Services Expected from Signalling Transport

The signalling connection shall provide in sequence delivery of SLmAP messages. SLmAP shall be notified if the signalling connection breaks.

7 Functions of SLmAP

The SLmAP protocol has the following functions:

- Measurement Information Transfer. This function allows the E-SMLC to exchange measurement information with the LMU for the purpose of UTDOA positioning.
- SLm interface management. This function allows initialization of the SLm interface and exchange of capability information between the E-SMLC and LMU.
- Reporting of general error situations. This function allows proper error reporting and handling.

Table 7.1: Mapping between SLmAP functions and LPPa EPs

Function	Elementary Procedure(s)
Measurement Information Transfer	a) Measurement b) Measurement Update c) Measurement Abort
SLm Interface Management	a) SLm Setup b) Reset
Reporting of general error situations	Error Indication

8 SLmAP Procedures

8.1 List of SLmAP Elementary procedures

In the following tables, all EPs are divided into Class 1 and Class 2 EPs (see subclause 3.1 for explanation of the different classes):

Table 8.1.1: Class 1 procedures

Elementary Procedure	Initiating Message	Successful Outcome	Unsuccessful Outcome
		Response message	Response message
Measurement	MEASUREMENT REQUEST	MEASUREMENT RESPONSE	MEASUREMENT FAILURE
SLm Setup	SLm SETUP REQUEST	SLm SETUP RESPONSE	SLm SETUP FAILURE
Reset	RESET REQUEST	RESET ACKNOWLEDGE	

Table 8.1.2: Class 2 procedures

Elementary Procedure	Message
Measurement Update	MEASUREMENT UPDATE
Measurement Abort	MEASUREMENT ABORT
Error Indication	ERROR INDICATION

The following applies concerning interference between Elementary Procedures:

- The Reset procedure takes precedence over all other EPs.

8.2 Measurement Procedures

8.2.1 Measurement

8.2.1.1 General

The purpose of the Measurement procedure is to allow the E-SMLC to request the LMU to perform and report UL RTOA measurements for the purpose of UTDOA positioning.

8.2.1.2 Successful Operation

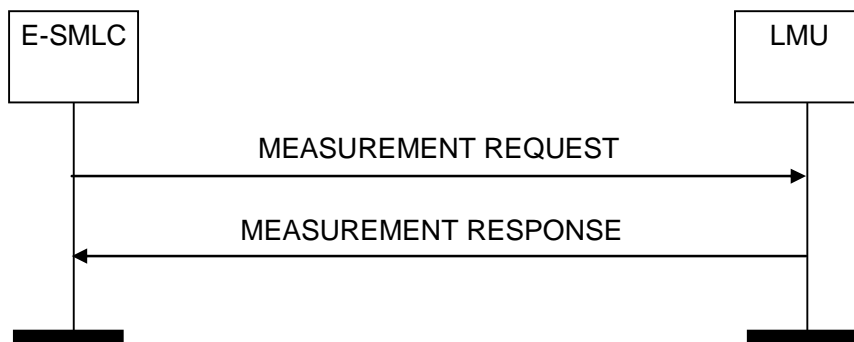


Figure 8.2.1.2.1: Measurement procedure. Successful operation.

The E-SMLC initiates the procedure by sending a MEASUREMENT REQUEST message to the LMU. The E-SMLC shall include the *deltaSS* IE in the MEASUREMENT REQUEST message if SRS sequence hopping is enabled for that particular measurement. If the *deltaSS* IE is included in the MEASUREMENT REQUEST message, the LMU shall consider that SRS sequence hopping is enabled for the measurement being requested. If the requested measurement has been successful, the LMU shall reply with a MEASUREMENT RESPONSE message.

8.2.1.3 Unsuccessful Operation

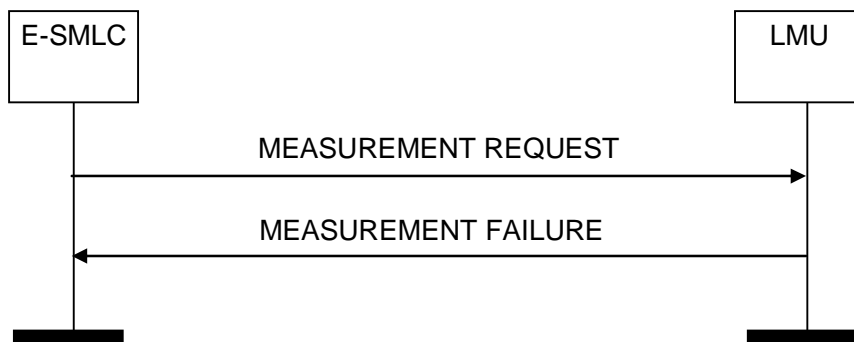


Figure 8.2.1.3.1: Measurement procedure. Unsuccessful operation.

If the LMU cannot successfully measure the UL RTOA for the target UE, it shall respond with a MEASUREMENT FAILURE message indicating the cause of the failure.

8.2.1.4 Abnormal Conditions

Not applicable.

8.2.2 Measurement Update

8.2.2.1 General

The purpose of the Measurement Update Procedure is to notify the LMU of a change in the previously signalled measurement configuration for one or more cells for the UE being positioned.

8.2.2.2 Successful Operation

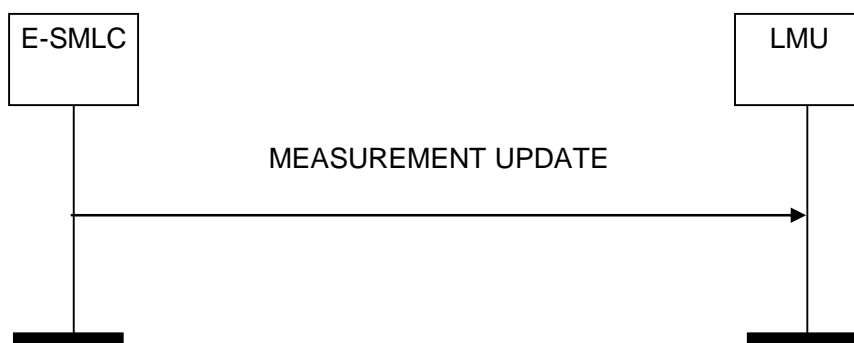


Figure 8.2.2.2.1: Measurement Update: Successful Operation.

The E-SMLC initiates the procedure by sending a MEASUREMENT UPDATE message. The E-SMLC shall include the *deltaSS* IE in the MEASUREMENT UPDATE message if SRS sequence hopping is enabled for that particular measurement. If the *deltaSS* IE is included in the MEASUREMENT UPDATE message, the LMU shall consider that SRS sequence hopping is enabled for the measurement.

Upon receiving the *UL RTOA Measurement Configuration* IE, the LMU shall overwrite the previously received measurement configuration information.

8.2.2.3 Unsuccessful Operation

Not applicable.

8.2.2.4 Abnormal Conditions

If the LMU cannot identify the previously requested measurement to be modified, it shall ignore the MEASUREMENT UPDATE message without taking further action.

8.2.3 Measurement Abort

8.2.3.1 General

The purpose of the Measurement Abort Procedure is to enable the E-SMLC to abort an on-going measurement identified by the E-SMLC Measurement ID.

8.2.3.2 Successful Operation



Figure 8.2.3.2.1: Measurement Abort Procedure: Successful Operation.

The E-SMLC initiates the procedure by sending a MEASUREMENT ABORT message.

Upon receiving this message, the LMU shall terminate the on-going measurement identified by the E-SMLC Measurement ID and may release any resources previously allocated for the same measurement.

8.2.3.3 Unsuccessful Operation

Not applicable.

8.2.3.4 Abnormal Conditions

If the LMU cannot identify the previously requested measurement to be aborted, it shall ignore the MEASUREMENT ABORT message without taking further action.

8.3 Management procedures

The following paragraphs describe the SLMAP interface management procedures.

8.3.1 SLM Setup

8.3.1.1 General

The purpose of the Setup procedure is to exchange application level data needed for the E-SMLC and the LMU to correctly interoperate on the SLM interface. This procedure shall be the first SLMAP procedure triggered after the TNL association has become operational.

8.3.1.2 Successful Operation

Figure 8.3.1.2.1: SLM Setup procedure: Successful Operation.

The LMU initiates the procedure by sending the SLM SETUP REQUEST message to the E-SMLC including the appropriate data. The E-SMLC responds with an SLM SETUP RESPONSE message.

The exchanged data shall be stored in respective node and used for the duration of the TNL association. When this procedure is finished, the SLM interface is operational and other SLMAP messages can be exchanged.

8.3.1.3 Unsuccessful Operation

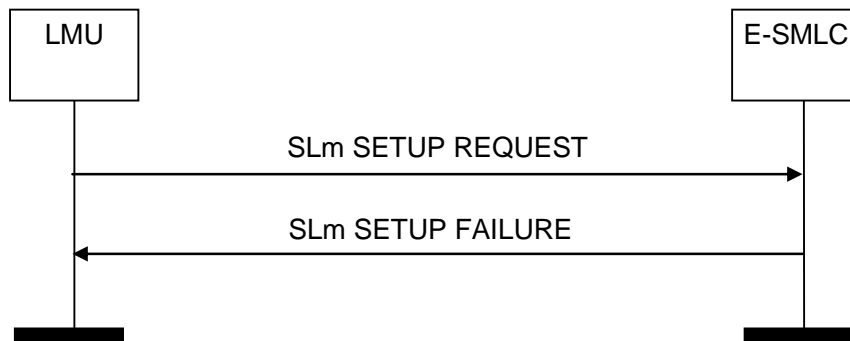


Figure 8.3.1.3.1: SLM Setup procedure: Unsuccessful Operation.

If the E-SMLC cannot accept the setup, it shall respond with an SLM SETUP FAILURE with an appropriate cause value.

8.3.1.4 Abnormal Conditions

Not applicable.

8.3.2 Reset

8.3.2.1 General

The purpose of the Reset procedure is to initialise or re-initialise the LMU SLMAP contexts in the event of a failure in either the LMU or E-SMLC. This procedure does not affect the application level configuration data exchanged during, e.g., the SLM Setup procedure.

8.3.2.2 Successful Operation

8.3.2.2.1 Reset Procedure Initiated from the E-SMLC

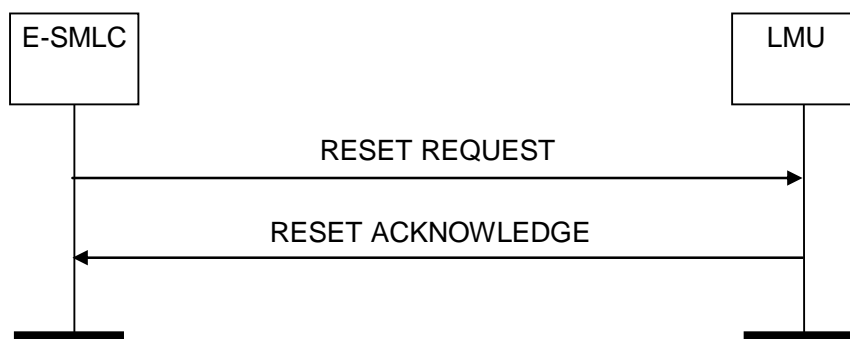


Figure 8.3.2.2.1.1: Reset procedure initiated from the E-SMLC.

In the event of a failure at the E-SMLC, which has resulted in the loss of some or all transaction reference information, a RESET REQUEST message should be sent to the LMU.

At reception of the RESET REQUEST message the LMU shall abort any other ongoing procedure (except another Reset procedure) on the same SLM interface, delete any measurement information related to the E-SMLC, release associated resources, and respond with the RESET ACKNOWLEDGE message.

8.3.2.2.2 Reset Procedure Initiated from the LMU

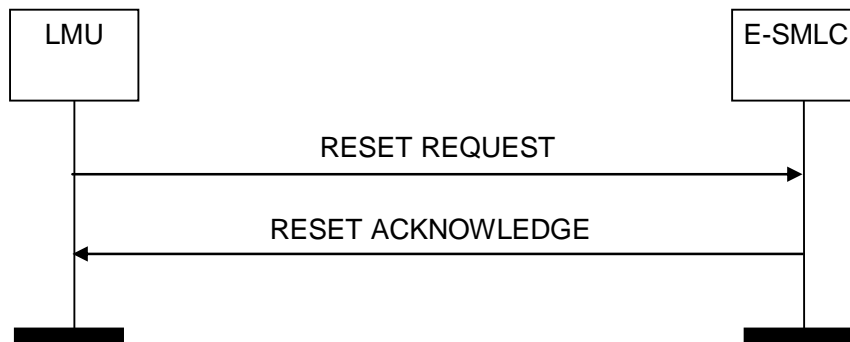


Figure 8.3.2.2.1: Reset procedure initiated from the LMU.

In the event of a failure at the LMU, which has resulted in the loss of some or all transaction reference information, a RESET REQUEST message shall be sent to the E-SMLC.

At reception of the RESET REQUEST message the E-SMLC shall abort any other ongoing procedure (except another Reset procedure) on the same SLM interface, delete any measurement information related to the LMU, release associated resources, and respond with the RESET ACKNOWLEDGE message.

8.3.2.3 Unsuccessful Operation

Void.

8.3.2.4 Abnormal Conditions

If a Reset procedure is ongoing in the LMU concerning one requesting E-SMLC and the LMU receives a RESET message from the same E-SMLC, the LMU shall respond with the RESET ACKNOWLEDGE message as described in 8.3.2.2.1.

If a Reset procedure is ongoing in the E-SMLC concerning one requesting LMU and the E-SMLC receives a RESET message from the same LMU, the E-SMLC shall respond with the RESET ACKNOWLEDGE message as described in 8.3.2.2.2.

If the requesting entity does not receive RESET ACKNOWLEDGE message, the requesting entity may reinitiate the Reset procedure towards the same receiving entity provided that the content of the new RESET REQUEST message is identical to the content of the previously unacknowledged RESET REQUEST message.

8.3.3 Error Indication

8.3.3.1 General

The Error Indication procedure is initiated by a node in order to report detected errors in one incoming message, provided they cannot be reported by an appropriate failure message.

8.3.3.2 Successful Operation

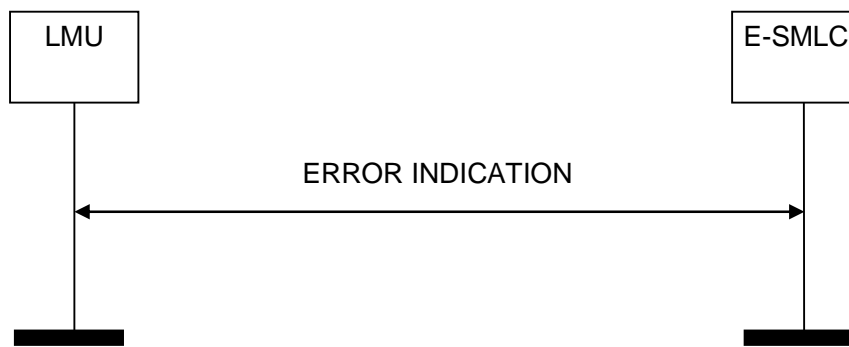


Figure 8.3.3.2.1: Error Indication procedure

When the conditions defined in clause 10 are fulfilled, the Error Indication procedure is initiated by an ERROR INDICATION message sent from the receiving node.

The ERROR INDICATION message shall contain at least either the *Cause IE* or the *Criticality Diagnostics IE*.

9 Elements for SLMAP Communication

9.1 Message Functional Definition and Content

9.1.1 MEASUREMENT REQUEST

This message is sent by the E-SMLC to request the LMU to make a UL RTOA measurement.

Direction: E-SMLC → LMU.

IE/Group Name	Presence	Range	IE type and reference	Semantics description	Criticality	Assigned Criticality
Message Type	M		9.2.2		YES	reject
SLMAP Transaction ID	M		9.2.3		-	
E-SMLC Measurement ID	M		9.2.12		YES	reject
UL RTOA Measurement Configuration	M		9.2.4		YES	reject

9.1.2 MEASUREMENT RESPONSE

This message is sent by the LMU to report UL RTOA measurements for the target UE.

Direction: LMU → E-SMLC.

IE/Group Name	Presence	Range	IE type and reference	Semantics description	Criticality	Assigned Criticality
Message Type	M		9.2.2		YES	reject
SLMAP Transaction ID	M		9.2.3		-	
E-SMLC Measurement ID	M		9.2.12		YES	reject
UL RTOA measurements	M		9.2.5		YES	reject
Criticality Diagnostics	O		9.2.11		YES	ignore

9.1.3 MEASUREMENT FAILURE

This message is sent by the LMU to report measurement failure.

Direction: LMU → E-SMLC.

IE/Group Name	Presence	Range	IE type and reference	Semantics description	Criticality	Assigned Criticality
Message Type	M		9.2.2		YES	reject
SLmAP Transaction ID	M		9.2.3		-	
E-SMLC Measurement ID	M		9.2.12		YES	reject
Cause	M		9.2.10		YES	ignore
Criticality Diagnostics	O		9.2.11		YES	ignore

9.1.4 SLm SETUP REQUEST

This message is sent by the LMU to setup SLm with E-SMLC.

Direction: LMU → E-SMLC

IE/Group Name	Presence	Range	IE type and reference	Semantics description	Criticality	Assigned Criticality
Message Type	M		9.2.2		YES	reject
SLmAP Transaction ID	M		9.2.3		-	
LMU ID	M		9.2.6		YES	ignore
LMU Information	O		9.2.8		YES	ignore

9.1.5 SLm SETUP RESPONSE

This message is sent by the E-SMLC to information LMU

Direction: E-SMLC → LMU

IE/Group Name	Presence	Range	IE type and reference	Semantics description	Criticality	Assigned Criticality
Message Type	M		9.2.2		YES	reject
SLmAP Transaction ID	M		9.2.3		-	
E-SMLC ID	M		9.2.7		YES	reject
Criticality Diagnostics	O		9.2.11		YES	ignore

9.1.6 SLm SETUP FAILURE

This message is sent by the E-SMLC to indicate SLm Setup failure.

Direction: E-SMLC → LMU

IE/Group Name	Presence	Range	IE type and reference	Semantics description	Criticality	Assigned Criticality
Message Type	M		9.2.2		YES	reject
SLmAP Transaction ID	M		9.2.3		-	
Cause	M		9.2.10		YES	ignore
Criticality Diagnostics	O		9.2.11		YES	ignore

9.1.7 RESET REQUEST

This message is sent from the E-SMLC to the LMU or vice versa in order to reset the SLm interface.

Direction: E-SMLC → LMU or LMU → E-SMLC.

IE/Group Name	Presence	Range	IE type and reference	Semantics description	Criticality	Assigned Criticality
Message Type	M		9.2.2		YES	reject
SLmAP Transaction ID	M		9.2.3		-	
Cause	M		9.2.10		YES	ignore

9.1.8 RESET ACKNOWLEDGE

This message is sent by the receiving entity as a response to a RESET REQUEST message.

Direction: E-SMLC → LMU or LMU → E-SMLC.

IE/Group Name	Presence	Range	IE type and reference	Semantics description	Criticality	Assigned Criticality
Message Type	M		9.2.2		YES	reject
SLmAP Transaction ID	M		9.2.3		-	
Criticality Diagnostics	O		9.2.11		YES	ignore

9.1.9 MEASUREMENT ABORT

This message is sent by the E-SMLC to request the LMU to abort the measurement identified by the E-SMLC Measurement ID.

Direction: E-SMLC → LMU.

IE/Group Name	Presence	Range	IE type and reference	Semantics description	Criticality	Assigned Criticality
Message Type	M		9.2.2		YES	reject
SLmAP Transaction ID	M		9.2.3		-	
E-SMLC Measurement ID	M		9.2.12		YES	reject

9.1.10 MEASUREMENT UPDATE

This message is sent by the E-SMLC to indicate to the LMU that the previously signalled measurement configuration for the target UE has changed for one or more cells, and to convey the SRS configuration for all cells with periodic SRS configured for the target UE.

Direction: E-SMLC → LMU.

IE/Group Name	Presence	Range	IE type and reference	Semantics description	Criticality	Assigned Criticality
Message Type	M		9.2.2		YES	reject
SLmAP Transaction ID	M		9.2.3		-	
E-SMLC Measurement ID	M		9.2.12		YES	reject
UL RTOA Measurement Configuration	M		9.2.4		YES	reject

9.1.11 ERROR INDICATION

This message is used to indicate that some error has been detected in the eNB or in the E-SMLC.

Direction: E-SMLC → eNB and eNB → E-SMLC.

IE/Group Name	Presence	Range	IE type and reference	Semantics description	Criticality	Assigned Criticality
Message Type	M		9.2.2		YES	ignore
SLmAP Transaction ID	M		9.2.3		-	
Cause	O		9.2.0		YES	ignore
Criticality Diagnostics	O		9.2.11		YES	ignore

9.2 Information Element Definitions

9.2.1 General

Subclause 9.2 presents the SLmAP IE definitions in tabular format. The corresponding ASN.1 definition is presented in subclause 9.3. In case there is contradiction between the tabular format in subclause 9.2 and the ASN.1 definition, the ASN.1 shall take precedence, except for the definition of conditions for the presence of conditional elements, where the tabular format shall take precedence.

When specifying information elements which are to be represented by bitstrings, if not otherwise specifically stated in the semantics description of the concerned IE or elsewhere, the following principle applies with regards to the ordering of bits:

- The first bit (leftmost bit) contains the most significant bit (MSB);
- The last bit (rightmost bit) contains the least significant bit (LSB);
- When importing bitstrings from other specifications, the first bit of the bitstring contains the first bit of the concerned information;

9.2.2 Message Type

The *Message Type* IE uniquely identifies the message being sent. It is mandatory for all messages.

IE/Group Name	Presence	Range	IE type and reference	Semantics description
Message Type				
>Procedure Code	M		INTEGER (0..63)	
>Type of Message	M		CHOICE (Initiating Message, Successful Outcome, Unsuccessful Outcome, ...)	

9.2.3 SLmAP Transaction ID

The *SLmAP Transaction ID* IE is used to associate all the messages belonging to the same procedure. Messages belonging to the same procedure shall use the same Transaction ID.

The SLmAP Transaction ID is determined by the initiating peer of a procedure.

The SLmAP Transaction ID shall uniquely identify a procedure among all ongoing parallel procedures using the same procedure code, and initiated by the same peer.

IE/Group Name	Presence	Range	IE Type and Reference	Semantics Description
SLmAP Transaction ID	M		INTEGER (0..32767, ...)	

9.2.4 UL RTOA Measurement Configuration

The purpose of the UL RTOA Measurement Configuration IE is to convey the UL RTOA measurement parameters to the LMU.

IE/Group Name	Presence	Range	IE Type and Reference	Semantics Description
UL RTOA Reference Time	M		BIT STRING (64)	Time in seconds relative to 00:00:00 on 1 January 1900 (calculated as continuous time without leap seconds and traceable to a common time reference) where binary encoding of the integer part is in the first 32 bits and binary encoding of the fraction part in the last 32 bits. The fraction part is expressed with a granularity of $1/2^{32}$ second. This IE is defined in reference to the SFN initialization time, TS 36.455 [4].
Search Window Parameters	O			
>Expected Propagation Delay	O		INTEGER (1..1200,...)	UL RTOA expected propagation delay as defined in TS 36.111 [9].
>Delay Uncertainty	O		INTEGER (1..100,...)	The uncertainty of the propagation delay. Mapping is included in TS 36.111 [9].
Number of Transmissions	M		INTEGER (1..500,..., 0)	The number of periodic SRS transmissions. The value of '0' represents an infinite number of SRS transmissions.
SRS Configuration	M	<1.. <i>maxServCell</i> >		Configuration of SRS for corresponding serving cells.
>PCI	M		INTEGER (0..503, ...)	Physical Cell ID TS 36.455 [4].
>UL EARFCN	M		INTEGER (0.. <i>maxEARFCN</i> , ...)	Corresponds to NUL for FDD and ND/UL for TDD in ref. TS 36.104 [10]
>UL-bandwidth	M		ENUMERATED (n6, n15, n25, n50, n75, n100, ...)	Cell transmission bandwidth configuration in uplink corresponding to an E-UTRA channel bandwidth TS 36.104 [10], Table 5.6-1. Value n6 corresponds to 6 resource blocks, n15 to 15 resource blocks and so on.
>UL-CyclicPrefixLength	M		ENUMERATED (Normal, Extended)	Uplink cyclic prefix TS 36.455 [4].
>srs-BandwidthConfig	M		ENUMERATED (bw0, bw1, bw2, bw3, bw4, bw5, bw6, bw7, ...)	Cell-specific SRS bandwidth configuration TS 36.211 [11]. bw0 corresponds to value 0, bw1 to value 1 and so on.
>srs-Bandwidth	M		ENUMERATED (bw0, bw1, bw2, bw3, ...)	UE-specific SRS bandwidth configuration TS 36.211 [11]
>srs-AntennaPort	M		ENUMERATED (an1, an2, an4, , ...)	Number of antenna ports for SRS transmission. TS 36.211 [11]

>srs-HoppingBandwidth	M		ENUMERATED (hbw0, hbw1, hbw2, hbw3, ...)	SRS frequency hopping bandwidth configuration TS 36.211 [11]
>srs-cyclicShift	M		ENUMERATED (cs0, cs1, cs2, cs3, cs4, cs5, cs6, cs7, ...)	SRS-Cyclic shift [36.211]
>srs-ConfigIndex	M		INTEGER (0..1023)	SRS configuration index [TS 36.213]
>MaxUpPt	C-IfTDD		ENUMERATED (true)	<i>MaxUpPt</i> TS 36.211 [11]
>transmissionComb	M		INTEGER (0..1)	Transmission comb TS 36.211 [11]
>freqDomainPosition	M		INTEGER (0..23)	Frequency domain position TS 36.211 [11]
>groupHoppingEnabled	M		BOOLEAN	<i>Group-hopping-enabled</i> TS 36.211 [11]
>deltaSS	O		INTEGER (0..29)	<i>deltaSS</i> TS 36.211 [11]

Condition	Explanation
IfTDD	This IE shall be present if the <i>UL-EARFCN</i> IE refers to TDD operation.

Range bound	Explanation
<i>maxServCell</i>	Maximum number of serving cells = 5 TS 36.455 [4].
<i>maxEARFCN</i>	Maximum value of UL EARFCN. Value is 262143.

9.2.5 UL RTOA Measurements

The purpose of the *UL RTOA Measurements* IE is to signal UL RTOA measurement results to the E-SMLC.

IE/Group Name	Presence	Range	IE Type and Reference	Semantics Description
ULRTOAMeasurements	M	<0.. <i>maxNoULRTOA</i> >		Information below included for each UL RTOA measurement.
>UL EARFCN	M		INTEGER (0.. <i>maxEARFCN</i> ,...)	Corresponds to NUL for FDD and ND/UL for TDD in TS 36.104.
>UL RTOA	M		INTEGER (1..4800, ...)	LU RTOA Measurement. Mapping of the measured quantity is as defined in TS 36.111 [9].

Range bound	Explanation
<i>maxNoULRTOA</i>	Maximum no. of UL RTOA measurements per UE is 5, one measurement per carrier.
<i>maxEARFCN</i>	Maximum value of UL EARFCN. Value is 262143.

9.2.6 LMU ID

This information element represents the LMU ID to uniquely identify an LMU within an E-UTRAN.

IE/Group Name	Presence	Range	IE type and reference	Semantics description
LMU ID	M		INTEGER (0..1048575)	

9.2.7 E-SMLC ID

This information element represents the E-SMLC ID to uniquely identify an E-SMLC.

IE/Group Name	Presence	Range	IE type and reference	Semantics description
E-SMLC ID	M		INTEGER (0..255)	

9.2.8 LMU Information

This information element represents the LMU Capability information.

IE/Group Name	Presence	Range	IE type and reference	Semantics description
LMU Position	O		9.2.9	
ListofRFBands	M	<1..maxNoLMURFBands>		Information below included for each RF band supported
>FreqBandIndicator	M		INTEGER (1..256, ...)	Corresponds to E-UTRA Operating Band in TS 36.101 [5] Table 5.5-1.
BWCombinationParameters	O	<1..maxBWComb>		Applies for each UE in CA only. List of supported bandwidth combinations in which the LMU can perform UL RTOA measurements for UEs in CA.
>SupportedBandwidthCombinationSet	M		INTEGER (1..maxBWCombSet)	Supported bandwidth combination set as defined in 36.101.
>BandCombination	M	<1 to maxSimultaneousBands>		
>>FreqBandIndicator	M		INTEGER (1..256,...)	Corresponds to E-UTRA Operating Band in the corresponding CA bandwidth combination.

Range bound	Explanation
<i>maxBWComb</i>	Maximum no. of Band Combinations is 128.
<i>maxBWCombSet</i>	Maximum index of the bandwidth combination set is 32.
<i>maxSimultaneousBands</i>	Maximum number of Simultaneous Bands is 4.
<i>maxNoLMURFBands</i>	Maximum number of LMU RF Bands is 256.

9.2.9 LMU Position

LMU Position IE is used to identify the geographical position of an E-UTRAN LMU. It is expressed as ellipsoid point with altitude and uncertainty ellipsoid, with parameters according to TS 23.032 [6].

IE/Group Name	Presence	Range	IE Type and Reference	Semantics Description
Latitude Sign	M		ENUMERATED (North, South)	
Degrees Of Latitude	M		INTEGER (0..2 ²³ -1)	
Degrees Of Longitude	M		INTEGER (-2 ²³ ..2 ²³ -1)	
Direction of Altitude	M		ENUMERATED (Height, Depth)	
Altitude	M		INTEGER (0..2 ¹⁵ -1)	
Uncertainty semi-major	M		INTEGER (0..127)	
Uncertainty semi-minor	M		INTEGER (0..127)	
Orientation of major axis	M		INTEGER (0..179)	
Uncertainty Altitude	M		INTEGER (0..127)	
Confidence	M		INTEGER (0..100)	

9.2.10 Cause

The purpose of the *Cause* IE is to indicate the reason for a particular event for the SLMAP protocol.

IE/Group Name	Presence	Range	IE Type and Reference	Semantics Description
CHOICE <i>Cause Group</i>	M			
> <i>Radio Network Layer</i>				
>> <i>Radio Network Layer Cause</i>	M		ENUMERATED (Unknown or already allocated SLMAP ID, RF frequency bands not supported, RF bandwidth combination for a CA UE not supported, Invalid SRS configuration, Unspecified, ...)	
> <i>Protocol</i>				
>> <i>Protocol Cause</i>	M		ENUMERATED (Transfer Syntax Error, Abstract Syntax Error (Reject), Abstract Syntax Error (Ignore and Notify), Message not Compatible with Receiver State, Semantic Error, Abstract Syntax Error (Falsely Constructed Message), Unspecified, ...)	
> <i>Misc</i>				
>> <i>Miscellaneous Cause</i>	M		ENUMERATED (Control Processing Overload, Processing Resources not available, Hardware Failure, O&M Intervention, Unspecified, ...)	

The meaning of the different cause values is described in the following tables. In general, "not supported" cause values indicate that the related capability is missing. On the other hand, "not available" cause values indicate that the related capability is present, but insufficient resources were available to perform the requested action.

Radio Network Layer cause	Meaning
Unknown or already allocated SLMAP ID	The action failed because the SLMAP ID is either unknown, or (for a first message received at the LMU) is known and already allocated to an existing context.
RF frequency bands not supported	The LMU does not support UL RTOA measurements in the requested RF band or RF band combinations for a CA UE.
RF bandwidth combination for a CA UE not supported	The LMU does not support UL RTOA measurements for a CA UE over the requested RF bandwidth or RF bandwidth combinations.
Invalid SRS configuration	The received SRS configuration for the target UE was not valid.
Unspecified	Sent when none of the above cause values applies but still the cause is Location Measurement related.

Protocol cause	Meaning
Transfer Syntax Error	The received message included a transfer syntax error.
Abstract Syntax Error (Reject)	The received message included an abstract syntax error and the concerning criticality indicated "reject".
Abstract Syntax Error (Ignore And Notify)	The received message included an abstract syntax error and the concerning criticality indicated "ignore and notify".
Message Not Compatible With LMU State	The received message was not compatible with the LMU state.
Semantic Error	The received message included a semantic error.
Abstract Syntax Error (Falsely Constructed Message)	The received message contained IEs or IE groups in wrong order or with too many occurrences.
Unspecified	Sent when none of the above cause values applies but still the cause is Protocol related.

Miscellaneous cause	Meaning
Control Processing Overload	Control processing overload.
Not Enough Processing Resources Available	No enough resources are available related to location processing.
Hardware Failure	Action related to hardware failure.
O&M Intervention	The action is due to O&M intervention.
Unspecified Failure	Sent when none of the above cause values applies and the cause is not related to either the Location Processing or Protocol categories.

9.2.11 Criticality Diagnostics

The *Criticality Diagnostics* IE is sent by the E-SMLC or the LMU when parts of a received message have not been comprehended or were missing, or if the message contained logical errors. When applicable, it contains information about which IEs were not comprehended or were missing. The conditions for inclusion of the SLMAP Transaction ID IE are described in clause 10.

For further details on how to use the *Criticality Diagnostics* IE, (see clause 10).

IE/Group Name	Presence	Range	IE type and reference	Semantics description
Procedure Code	O		INTEGER (0..63)	Procedure Code is to be used if Criticality Diagnostics is part of Error Indication procedure, and not within the response message of the same procedure that caused the error
Triggering Message	O		ENUMERATED(initiating message, successful outcome, unsuccessful outcome)	The Triggering Message is used only if the Criticality Diagnostics is part of Error Indication procedure.
Procedure Criticality	O		ENUMERATED(reject, ignore, notify)	This Procedure Criticality is used for reporting the Criticality of the Triggering message (Procedure).
SLmAP Transaction ID	O		9.2.3	
Information Element Criticality Diagnostics		<i>0 to <maxnoof errors></i>		
>IE Criticality	M		ENUMERATED(reject, ignore, notify)	The IE Criticality is used for reporting the criticality of the triggering IE. The value 'ignore' shall not be used.
>IE ID	M		INTEGER (0..65535)	The IE ID of the not understood or missing IE
>Type of Error	M		ENUMERATED(not understood, missing, ...)	

Range bound	Explanation
maxnooferrors	Maximum no. of IE errors allowed to be reported with a single message. The value for maxnooferrors is 256.

9.2.12 E-SMLC Measurement ID

The *E-SMLC Measurement ID* IE is used to associate all the procedures related to the same measurement initiated by the E-SMLC. Procedures related to the same measurement shall use the same E-SMLC Measurement ID.

The E-SMLC Measurement ID is determined by the initiating peer of the measurement i.e. the E-SMLC.

The E-SMLC Measurement ID shall uniquely identify a measurement among all ongoing parallel measurements initiated by the same peer.

IE/Group Name	Presence	Range	IE Type and Reference	Semantics Description
E-SMLC Measurement ID	M		INTEGER(1..65535, ...)	

9.3 Message and Information Element Abstract Syntax (with ASN.1)

9.3.1 General

Sub clause 9.3 presents the Abstract Syntax of the SLMAP protocol with ASN.1. In case there is contradiction between the ASN.1 definition in this sub clause and the tabular format in sub clause 9.1 and 9.2, the ASN.1 shall take precedence, except for the definition of conditions for the presence of conditional elements, in which the tabular format shall take precedence.

The ASN.1 definition specifies the structure and content of SLMAP messages. SLMAP messages can contain any IEs specified in the object set definitions for that message without the order or number of occurrence being restricted by ASN.1. However, for this version of the standard, a sending entity shall construct a SLMAP message according to the PDU definitions module and with the following additional rules (Note that in the following IE means an IE in the object set with an explicit id. If one IE needed to appear more than once in one object set, then the different occurrences have different IE ids):

- IEs shall be ordered (in an IE container) in the order they appear in object set definitions.
- Object set definitions specify how many times IEs may appear. An IE shall appear exactly once if the presence field in an object has value "mandatory". An IE may appear at most once if the presence field in an object has value "optional" or "conditional". If in a tabular format there is multiplicity specified for an IE (i.e. an IE list) then in the corresponding ASN.1 definition the list definition is separated into two parts. The first part defines an IE container list in which the list elements reside. The second part defines list elements. The IE container list appears as an IE of its own. For this version of the standard an IE container list may contain only one kind of list elements.

If a SLMAP message that is not constructed as defined above is received, this shall be considered as Abstract Syntax Error, and the message shall be handled as defined for Abstract Syntax Error in clause 10.

9.3.2 Usage of Private Message Mechanism for Non-standard Use

The private message mechanism for non-standard use may be used:

- for special operator (and/or vendor) specific features considered not to be part of the basic functionality, i.e. the functionality required for a complete and high-quality specification in order to guarantee multivendor inter-operability.
- by vendors for research purposes, e.g. to implement and evaluate new algorithms/features before such features are proposed for standardisation.

The private message mechanism shall not be used for basic functionality. Such functionality shall be standardised.

9.3.3 Elementary Procedure Definitions

```
-- *****
--
-- Elementary Procedure definitions
--
-- *****
```

```
SLMAP-PDU-Descriptions {  
itu-t (0) identified-organization (4) etsi (0) mobileDomain (0)  
eps-Access (21) modules (3) slmap (50) version1 (1) slmap-PDU-Descriptions (0) }
```

```
DEFINITIONS AUTOMATIC TAGS ::=
```

```
BEGIN
```

```
-- *****  
--  
-- IE parameter types from other modules.  
--  
-- *****
```

```
IMPORTS
```

```
    Criticality,  
    ProcedureCode,  
    SLMAPTransactionID
```

```
FROM SLMAP-CommonDataTypes
```

```
    ErrorIndication,  
    PrivateMessage,  
    SLMSetupRequest,  
    SLMSetupResponse,  
    SLMSetupFailure,  
    MeasurementRequest,  
    MeasurementResponse,  
    MeasurementFailure,  
    MeasurementUpdate,  
    MeasurementAbort,  
    ResetRequest,  
    ResetAcknowledge
```

```
FROM SLMAP-PDU-Contents
```

```
    id-errorIndication,  
    id-privateMessage,  
    id-measurement,  
    id-slmSetup,  
    id-reset,  
    id-measurementUpdate,  
    id-measurementAbort
```

```
FROM SLMAP-Constants;
```

```
-- *****  
--  
-- Interface Elementary Procedure Class  
--
```

```

-- *****
SLMAP-ELEMENTARY-PROCEDURE ::= CLASS {
    &InitiatingMessage          ,
    &SuccessfulOutcome          OPTIONAL,
    &UnsuccessfulOutcome        OPTIONAL,
    &procedureCode              ProcedureCode UNIQUE,
    &criticality                 Criticality   DEFAULT ignore
}
WITH SYNTAX {
    INITIATING MESSAGE          &InitiatingMessage
    [SUCCESSFUL OUTCOME        &SuccessfulOutcome]
    [UNSUCCESSFUL OUTCOME      &UnsuccessfulOutcome]
    PROCEDURE CODE              &procedureCode
    [CRITICALITY                &criticality]
}
-- *****
--
-- Interface PDU Definition
--
-- *****

SLMAP-PDU ::= CHOICE {
    initiatingMessage    InitiatingMessage,
    successfulOutcome    SuccessfulOutcome,
    unsuccessfulOutcome  UnsuccessfulOutcome,
    ...
}

InitiatingMessage ::= SEQUENCE {
    procedureCode        SLMAP-ELEMENTARY-PROCEDURE.&procedureCode    ( { SLMAP-ELEMENTARY-PROCEDURES } ),
    criticality          SLMAP-ELEMENTARY-PROCEDURE.&criticality      ( { SLMAP-ELEMENTARY-PROCEDURES } { @procedureCode } ),
    slmapTransactionID  SLMAPTransactionID,
    value                SLMAP-ELEMENTARY-PROCEDURE.&InitiatingMessage ( { SLMAP-ELEMENTARY-PROCEDURES } { @procedureCode } )
}

SuccessfulOutcome ::= SEQUENCE {
    procedureCode        SLMAP-ELEMENTARY-PROCEDURE.&procedureCode    ( { SLMAP-ELEMENTARY-PROCEDURES } ),
    criticality          SLMAP-ELEMENTARY-PROCEDURE.&criticality      ( { SLMAP-ELEMENTARY-PROCEDURES } { @procedureCode } ),
    slmapTransactionID  SLMAPTransactionID,
    value                SLMAP-ELEMENTARY-PROCEDURE.&SuccessfulOutcome ( { SLMAP-ELEMENTARY-PROCEDURES } { @procedureCode } )
}

UnsuccessfulOutcome ::= SEQUENCE {
    procedureCode        SLMAP-ELEMENTARY-PROCEDURE.&procedureCode    ( { SLMAP-ELEMENTARY-PROCEDURES } ),
    criticality          SLMAP-ELEMENTARY-PROCEDURE.&criticality      ( { SLMAP-ELEMENTARY-PROCEDURES } { @procedureCode } ),
    slmapTransactionID  SLMAPTransactionID,
    value                SLMAP-ELEMENTARY-PROCEDURE.&UnsuccessfulOutcome ( { SLMAP-ELEMENTARY-PROCEDURES } { @procedureCode } )
}
-- *****
--

```

```

-- Interface Elementary Procedure List
--
-- *****

SLMAP-ELEMENTARY-PROCEDURES SLMAP-ELEMENTARY-PROCEDURE ::= {
    SLMAP-ELEMENTARY-PROCEDURES-CLASS-1      |
    SLMAP-ELEMENTARY-PROCEDURES-CLASS-2      ,
    ...
}

SLMAP-ELEMENTARY-PROCEDURES-CLASS-1 SLMAP-ELEMENTARY-PROCEDURE ::= {
    measurement          |
    slmSetup              |
    reset                ,
    ...
}

SLMAP-ELEMENTARY-PROCEDURES-CLASS-2 SLMAP-ELEMENTARY-PROCEDURE ::= {
    measurementUpdate   |
    measurementAbort    |
    errorIndication     |
    privateMessage      ,
    ...
}

-- *****
--
-- Interface Elementary Procedures
--
-- *****

measurement          SLMAP-ELEMENTARY-PROCEDURE ::= {
    INITIATING MESSAGE      MeasurementRequest
    SUCCESSFUL OUTCOME      MeasurementResponse
    UNSUCCESSFUL OUTCOME    MeasurementFailure
    PROCEDURE CODE          id-measurement
    CRITICALITY              reject
}

slmSetup              SLMAP-ELEMENTARY-PROCEDURE ::= {
    INITIATING MESSAGE      SLMSetupRequest
    SUCCESSFUL OUTCOME      SLMSetupResponse
    UNSUCCESSFUL OUTCOME    SLMSetupFailure
    PROCEDURE CODE          id-slmSetup
    CRITICALITY              reject
}

reset                 SLMAP-ELEMENTARY-PROCEDURE ::= {
    INITIATING MESSAGE      ResetRequest
    SUCCESSFUL OUTCOME      ResetAcknowledge
    PROCEDURE CODE          id-reset
    CRITICALITY              reject
}

```

```

measurementUpdate SLMAP-ELEMENTARY-PROCEDURE ::= {
    INITIATING MESSAGE      MeasurementUpdate
    PROCEDURE CODE          id-measurementUpdate
    CRITICALITY             ignore
}

measurementAbort SLMAP-ELEMENTARY-PROCEDURE ::= {
    INITIATING MESSAGE      MeasurementAbort
    PROCEDURE CODE          id-measurementAbort
    CRITICALITY             ignore
}

errorIndication SLMAP-ELEMENTARY-PROCEDURE ::= {
    INITIATING MESSAGE      ErrorIndication
    PROCEDURE CODE          id-errorIndication
    CRITICALITY             ignore
}

privateMessage SLMAP-ELEMENTARY-PROCEDURE ::= {
    INITIATING MESSAGE      PrivateMessage
    PROCEDURE CODE          id-privateMessage
    CRITICALITY             ignore
}

END

```

9.3.4 PDU Definitions

```

-- *****
--
-- PDU definitions for SLMAP.
--
-- *****

SLMAP-PDU-Contents {
    itu-t (0) identified-organization (4) etsi (0) mobileDomain (0)
    eps-Access (21) modules (3) slmap (50) version1 (1) slmap-PDU-Contents (1) }

DEFINITIONS AUTOMATIC TAGS ::=

BEGIN

-- *****
--
-- IE parameter types from other modules.
--
-- *****

IMPORTS

    ESMLC-MeasurementID,
    UL-RTOAMeasurementConfiguration,
    CriticalityDiagnostics,

```

```

    UL-RTOAMeasurements,
    Cause,
    LMU-ID,
    LMUInformation,
    ESMLC-ID,
    ESMLC-MeasurementID

FROM SLMAP-IEs

    PrivateIE-Container{},
    ProtocolExtensionContainer{},
    ProtocolIE-Container{},
    ProtocolIE-ContainerList{},
    ProtocolIE-ContainerPair{},
    ProtocolIE-ContainerPairList{},
    ProtocolIE-Single-Container{},
    SLMAP-PRIVATE-IES,
    SLMAP-PROTOCOL-EXTENSION,
    SLMAP-PROTOCOL-IES,
    SLMAP-PROTOCOL-IES-PAIR
FROM SLMAP-Containers

    id-ESMLC-MeasurementID,
    id-UL-RTOAMeasurementConfiguration,
    id-CriticalityDiagnostics,
    id-UL-RTOAMeasurements,
    id-Cause,
    id-LMU-ID,
    id-LMUInformation,
    id-ESMLC-ID

FROM SLMAP-Constants;

-- *****
--
-- MEASUREMENT REQUEST
--
-- *****

MeasurementRequest ::= SEQUENCE {
    protocolIEs      ProtocolIE-Container      {{MeasurementRequest-IEs}},
    ...
}

MeasurementRequest-IEs SLMAP-PROTOCOL-IES ::= {
    { ID id-ESMLC-MeasurementID          CRITICALITY reject  TYPE ESMLC-MeasurementID          PRESENCE mandatory} |
    { ID id-UL-RTOAMeasurementConfiguration  CRITICALITY reject  TYPE UL-RTOAMeasurementConfiguration  PRESENCE mandatory},
    ...
}

```

```

-- *****
--
-- MEASUREMENT RESPONSE
--
-- *****

MeasurementResponse ::= SEQUENCE {
    protocolIEs      ProtocolIE-Container      {{MeasurementResponse-IEs}},
    ...
}

MeasurementResponse-IEs SLMAP-PROTOCOL-IES ::= {
    { ID id-ESMLC-MeasurementID      CRITICALITY reject TYPE ESMLC-MeasurementID      PRESENCE mandatory}|
    { ID id-UL-RTOAMeasurements      CRITICALITY reject TYPE UL-RTOAMeasurements      PRESENCE mandatory}|
    { ID id-CriticalityDiagnostics    CRITICALITY ignore TYPE CriticalityDiagnostics    PRESENCE optional},
    ...
}

-- *****
--
-- MEASUREMENT FAILURE
--
-- *****

MeasurementFailure ::= SEQUENCE {
    protocolIEs      ProtocolIE-Container      {{MeasurementFailure-IEs}},
    ...
}

MeasurementFailure-IEs SLMAP-PROTOCOL-IES ::= {
    { ID id-ESMLC-MeasurementID      CRITICALITY reject TYPE ESMLC-MeasurementID      PRESENCE mandatory}|
    { ID id-Cause                    CRITICALITY ignore TYPE Cause                    PRESENCE mandatory}|
    { ID id-CriticalityDiagnostics    CRITICALITY ignore TYPE CriticalityDiagnostics    PRESENCE optional},
    ...
}

-- *****
--
-- SLM SETUP REQUEST
--
-- *****

SLMSetupRequest ::= SEQUENCE {
    protocolIEs      ProtocolIE-Container      {{SLMSetupRequest-IEs}},
    ...
}

SLMSetupRequest-IEs SLMAP-PROTOCOL-IES ::= {
    { ID id-LMU-ID                    CRITICALITY ignore TYPE LMU-ID                    PRESENCE mandatory}|
    { ID id-LMUInformation            CRITICALITY ignore TYPE LMUInformation            PRESENCE optional},
    ...
}

```



```

-- *****
--
-- SLM SETUP RESPONSE
--
-- *****

SLMSetupResponse ::= SEQUENCE {
    protocolIEs          ProtocolIE-Container    {{SLMSetupResponse-IEs}},
    ...
}

SLMSetupResponse-IEs SLMAP-PROTOCOL-IES ::= {
    { ID id-ESMLC-ID          CRITICALITY reject TYPE ESMLC-ID          PRESENCE mandatory}|
    { ID id-CriticalityDiagnostics CRITICALITY ignore TYPE CriticalityDiagnostics PRESENCE optional},
    ...
}

-- *****
--
-- SLM SETUP FAILURE
--
-- *****

SLMSetupFailure ::= SEQUENCE {
    protocolIEs          ProtocolIE-Container    {{SLMSetupFailure-IEs}},
    ...
}

SLMSetupFailure-IEs SLMAP-PROTOCOL-IES ::= {
    { ID id-Cause          CRITICALITY ignore TYPE Cause          PRESENCE mandatory}|
    { ID id-CriticalityDiagnostics CRITICALITY ignore TYPE CriticalityDiagnostics PRESENCE optional},
    ...
}

-- *****
--
-- RESET REQUEST
--
-- *****

ResetRequest ::= SEQUENCE {
    protocolIEs          ProtocolIE-Container    {{ResetRequest-IEs}},
    ...
}

ResetRequest-IEs SLMAP-PROTOCOL-IES ::= {
    { ID id-Cause          CRITICALITY ignore TYPE Cause          PRESENCE mandatory},
    ...
}

```

```

-- *****
--
-- RESET ACKNOWLEDGE
--
-- *****

ResetAcknowledge ::= SEQUENCE {
    protocolIEs          ProtocolIE-Container    {{ResetAcknowledge-IEs}},
    ...
}

ResetAcknowledge-IEs SLMAP-PROTOCOL-IES ::= {
    { ID id-CriticalityDiagnostics          CRITICALITY ignore  TYPE CriticalityDiagnostics          PRESENCE optional},
    ...
}

-- *****
--
-- MEASUREMENT ABORT
--
-- *****

MeasurementAbort ::= SEQUENCE {
    protocolIEs          ProtocolIE-Container    {{MeasurementAbort-IEs}},
    ...
}

MeasurementAbort-IEs SLMAP-PROTOCOL-IES ::= {
    { ID id-ESMLC-MeasurementID            CRITICALITY reject  TYPE ESMLC-MeasurementID            PRESENCE mandatory},
    ...
}

-- *****
--
-- MEASUREMENT UPDATE
--
-- *****

MeasurementUpdate ::= SEQUENCE {
    protocolIEs          ProtocolIE-Container    {{ MeasurementUpdate-IEs}},
    ...
}

MeasurementUpdate-IEs SLMAP-PROTOCOL-IES ::= {
    { ID id-ESMLC-MeasurementID            CRITICALITY reject  TYPE ESMLC-MeasurementID            PRESENCE mandatory}|
    { ID id-UL-RTOAMeasurementConfiguration CRITICALITY reject  TYPE UL-RTOAMeasurementConfiguration PRESENCE mandatory},
    ...
}

```

```

-- *****
--
-- ERROR INDICATION
--
-- *****

ErrorIndication ::= SEQUENCE {
    protocolIEs          ProtocolIE-Container    {{ErrorIndication-IEs}},
    ...
}

ErrorIndication-IEs SLMAP-PROTOCOL-IES ::= {
    { ID id-Cause          CRITICALITY ignore TYPE Cause          PRESENCE optional}|
    { ID id-CriticalityDiagnostics CRITICALITY ignore TYPE CriticalityDiagnostics PRESENCE optional},
    ...
}

-- *****
--
-- PRIVATE MESSAGE
--
-- *****

PrivateMessage ::= SEQUENCE {
    privateIEs          PrivateIE-Container    {{PrivateMessage-IEs}},
    ...
}

PrivateMessage-IEs SLMAP-PRIVATE-IES ::= {
    ...
}

END

```

9.3.5 Information Element definitions

```

-- *****
--
-- Information Element Definitions
--
-- *****

SLMAP-IEs {
itu-t (0) identified-organization (4) etsi (0) mobileDomain (0)
eps-Access (21) modules (3) slmap (50) version1 (1) slmap-IEs (2) }

DEFINITIONS AUTOMATIC TAGS ::=

BEGIN

IMPORTS

```

```
maxNrOfErrors,
maxServCell,
maxEARFCN,
maxNoULRTOA,
maxNoLMURfBands,
maxBWCombSet,
maxBWComb,
maxSimultaneousBands

FROM SLMAP-Constants

Criticality,
SLMAPTransactionID,
ProcedureCode,
ProtocolIE-ID,
TriggeringMessage
FROM SLMAP-CommonDataTypes

ProtocolExtensionContainer{},
ProtocolIE-Single-Container{},
SLMAP-PROTOCOL-EXTENSION,
SLMAP-PROTOCOL-IES
FROM SLMAP-Containers;

Cause ::= CHOICE {
    radioNetworkLayer    RadioNetworkLayerCause,
    protocol              ProtocolCause,
    misc                  MiscCause,
    ...
}

RadioNetworkLayerCause ::= ENUMERATED {
    unknown-or-already-allocated-slmap-id,
    rf-frequency-band-not-supported,
    rf-bandwidth-not-supported,
    invalid-srs-coniguration,
    unspecified,
    ...
}

ProtocolCause ::= ENUMERATED {
    transfer-syntax-error,
    abstract-syntax-error-reject,
    abstract-syntax-error-ignore-and-notify,
    message-not-compatible-with-receiver-state,
    semantic-error,
    abstract-syntax-error-falsely-constructed-message,
    unspecified,
    ...
}

MiscCause ::= ENUMERATED {
    control-processing-overload,
```

```

    processing-resources-not-available,
    hardware-failure,
    o-and-m-intervention,
    unspecified,
    ...
}

CriticalityDiagnostics ::= SEQUENCE {
    procedureCode          ProcedureCode          OPTIONAL,
    triggeringMessage      TriggeringMessage      OPTIONAL,
    procedureCriticality   Criticality             OPTIONAL,
    slmapTransactionID    SLMAPTransactionID     OPTIONAL,
    iEsCriticalityDiagnostics CriticalityDiagnostics-IE-List OPTIONAL,
    iE-Extensions         ProtocolExtensionContainer { {CriticalityDiagnostics-ExtIEs} } OPTIONAL,
    ...
}

CriticalityDiagnostics-ExtIEs SLMAP-PROTOCOL-EXTENSION ::= {
    ...
}

CriticalityDiagnostics-IE-List ::= SEQUENCE (SIZE (1..maxNrOfErrors)) OF
    SEQUENCE {
        iECriticality          Criticality,
        iE-ID                  ProtocolIE-ID,
        typeOfError            TypeOfError,
        iE-Extensions         ProtocolExtensionContainer { {CriticalityDiagnostics-IE-List-ExtIEs} } OPTIONAL,
        ...
    }

CriticalityDiagnostics-IE-List-ExtIEs SLMAP-PROTOCOL-EXTENSION ::= {
    ...
}

TypeOfError ::= ENUMERATED {
    not-understood,
    missing,
    ...
}

UL-RTOAMeasurementConfiguration ::= SEQUENCE {
    ulRtoaReferenceTime      BIT STRING (SIZE (64)),
    searchWindowParameters   SearchWindowParameters OPTIONAL,
    numberOfTransmissions    INTEGER (1..500,..., 0),
    srsConfiguration        SRSConfiguration,
    ...
}

SearchWindowParameters ::= SEQUENCE {
    expectedPropagationDelay  INTEGER (1..1200, ...) OPTIONAL,

```

```

    delayUncertainty      INTEGER (1..100, ...)          OPTIONAL,
    ...
}

SRSConfiguration ::= SEQUENCE (SIZE (1.. maxServCell)) OF SRSConfigurationForOneCell

SRSConfigurationForOneCell ::= SEQUENCE {
    pci                    PCI,
    ulEarfcn               EARFCN,
    ulBandwidth            ChannelBandwidth,
    ulCyclicPrefixLength  CPLength,
    srsBandwidthConfig    BandwidthConfig,
    srsBandwidth           SRSBandwidth,
    srsAntennaPort        AntennaPort,
    srsHoppingBandwidth   HoppingBandwidth,
    srsCyclicShift        CyclicShift,
    srsConfigIndex        INTEGER (0..1023),
    srsMaxUpPts            ENUMERATED {true}             OPTIONAL, -- present if TDD
    transmissionComb      INTEGER (0..1),
    freqDomainPosition    INTEGER (0..23),
    groupHoppingEnabled   BOOLEAN,
    deltaSS                INTEGER (0..29)              OPTIONAL,
    ...
}

PCI ::= INTEGER (0..503, ...)

EARFCN ::= INTEGER (0..maxEARFCN, ...)

ChannelBandwidth ::= ENUMERATED {
    n6,
    n15,
    n25,
    n50,
    n75,
    n100,
    ...
}

CPLength ::= ENUMERATED {
    normal,
    extended,
    ...
}

BandwidthConfig ::= ENUMERATED {
    bw0,
    bw1,
    bw2,
    bw3,
    bw4,
    bw5,
    bw6,
    bw7,

```

```
    ...
  }

  SRSBandwidth ::= ENUMERATED {
    bw0,
    bw1,
    bw2,
    bw3,
    ...
  }

  AntennaPort ::= ENUMERATED {
    an1,
    an2,
    an4,
    ...
  }

  HoppingBandwidth ::= ENUMERATED {
    hbw0,
    hbw1,
    hbw2,
    hbw3,
    ...
  }

  CyclicShift ::= ENUMERATED {
    cs0,
    cs1,
    cs2,
    cs3,
    cs4,
    cs5,
    cs6,
    cs7,
    ...
  }

  UL-RTOAMeasurements ::= SEQUENCE (SIZE (1.. maxNoULRTOA)) OF UL-RTOAMeasurement

  UL-RTOAMeasurement ::= SEQUENCE {
    ulEarfcn          EARFCN,
    ulRtoa            INTEGER (1.. 4800, ...),
    ...
  }

  LMU-ID ::= INTEGER (0..1048575)

  ESMLC-ID ::= INTEGER (0..255)

  ESMLC-MeasurementID ::= INTEGER (0.. 65535, ...)
```

```

LMUInformation ::= SEQUENCE {
    lmuPosition          LMUPosition          OPTIONAL,
    listOfRfBands       ListOfRfBands,
    bwCombinationParameters BWCombinationParameters OPTIONAL,
    ...
}

ListOfRfBands ::= SEQUENCE (SIZE (1.. maxNoLMURfBands)) OF FreqBandIndicator

FreqBandIndicator ::= INTEGER (1.. 256)

BWCombinationParameters ::= SEQUENCE (SIZE (1.. maxBWComb)) OF
    SupportedBandwidthCombinationSet

SupportedBandwidthCombinationSet ::= SEQUENCE (SIZE (1.. maxBWCombSet)) OF
    BandCombination

BandCombination ::= SEQUENCE (SIZE (1.. maxSimultaneousBands)) OF
    FreqBandIndicator

LMUPosition ::= SEQUENCE {
    latitudeSign          ENUMERATED {north, south},
    latitude              INTEGER (0..8388607),
    longitude             INTEGER (-8388608..8388607),
    directionOfAltitude  ENUMERATED {height, depth},
    altitude              INTEGER (0..32767),
    uncertaintySemi-major INTEGER (0..127),
    uncertaintySemi-minor INTEGER (0..127),
    orientationOfMajorAxis INTEGER (0..179),
    uncertaintyAltitude  INTEGER (0..127),
    confidence            INTEGER (0..100),
    ...
}
END

```

9.3.6 Common definitions

```

-- *****
--
-- Common definitions
--
-- *****

SLMAP-CommonDataTypes {
itu-t (0) identified-organization (4) etsi (0) mobileDomain (0)
eps-Access (21) modules (3) slmap (50) version1 (1) slmap-CommonDataTypes (3) }

DEFINITIONS AUTOMATIC TAGS ::=

```



```

BEGIN
-- *****
--
-- Extension constants
--
-- *****

maxPrivateIEs          INTEGER ::= 65535
maxProtocolExtensions  INTEGER ::= 65535
maxProtocolIEs         INTEGER ::= 65535

-- *****
--
-- Common Data Types
--
-- *****

Criticality           ::= ENUMERATED { reject, ignore, notify }

SLMAPTransactionID    ::= INTEGER (0..32767, ...)

Presence              ::= ENUMERATED { optional, conditional, mandatory }

PrivateIE-ID          ::= CHOICE {
    local              INTEGER (0.. maxPrivateIEs),
    global              OBJECT IDENTIFIER
}

ProcedureCode         ::= INTEGER (0..63)

ProtocolIE-ID         ::= INTEGER (0..maxProtocolIEs)

TriggeringMessage     ::= ENUMERATED { initiating-message, successful-outcome, unsuccessful-outcome}

END

```

9.3.7 Constant definitions

```

-- *****
--
-- Constant definitions
--
-- *****

SLMAP-Constants {
itu-t (0) identified-organization (4) etsi (0) mobileDomain (0)
eps-Access (21) modules (3) slmap (50) version1 (1) slmap-Constants (4) }

DEFINITIONS AUTOMATIC TAGS ::=

```

```

BEGIN

IMPORTS
    ProcedureCode,
    ProtocolIE-ID
FROM SLMAP-CommonDataTypes;

-- *****
--
-- Elementary Procedures
--
-- *****

id-errorIndication          ProcedureCode ::= 0
id-privateMessage           ProcedureCode ::= 1
id-measurement              ProcedureCode ::= 2
id-slmSetup                 ProcedureCode ::= 3
id-reset                    ProcedureCode ::= 4
id-measurementUpdate        ProcedureCode ::= 5
id-measurementAbort         ProcedureCode ::= 6

-- *****
--
-- Lists
--
-- *****

maxNrOfErrors                INTEGER ::= 256
maxServCell                  INTEGER ::= 5
maxEARFCN                    INTEGER ::= 262143
maxNoULRTOA                  INTEGER ::= 5
maxNoLMURfBands              INTEGER ::= 256
maxBWComb                    INTEGER ::= 128
maxBWCombSet                 INTEGER ::= 32
maxSimultaneousBands         INTEGER ::= 4

-- *****
--
-- IEs
--
-- *****

id-ESMLC-MeasurementID      ProtocolIE-ID ::= 0
id-UL-RTOAMeasurementConfiguration ProtocolIE-ID ::= 1
id-CriticalityDiagnostics    ProtocolIE-ID ::= 2
id-UL-RTOAMeasurements       ProtocolIE-ID ::= 3
id-Cause                     ProtocolIE-ID ::= 4
id-LMU-ID                    ProtocolIE-ID ::= 5
id-LMUInformation            ProtocolIE-ID ::= 6
id-ESMLC-ID                  ProtocolIE-ID ::= 7

```

END

9.3.8 Container definitions

```

-- *****
--
-- Container definitions
--
-- *****

SLMAP-Containers {
itu-t (0) identified-organization (4) etsi (0) mobileDomain (0)
eps-Access (21) modules (3) slmap (50) version1 (1) slmap-Containers (5) }

DEFINITIONS AUTOMATIC TAGS ::=

BEGIN

-- *****
--
-- IE parameter types from other modules.
--
-- *****

IMPORTS
    maxPrivateIEs,
    maxProtocolExtensions,
    maxProtocolIEs,
    Criticality,
    Presence,
    PrivateIE-ID,
    ProtocolIE-ID
FROM SLMAP-CommonDataTypes;

-- *****
--
-- Class Definition for Protocol IEs
--
-- *****

SLMAP-PROTOCOL-IES ::= CLASS {
    &id          ProtocolIE-ID          UNIQUE,
    &criticality Criticality,
    &Value,
    &presence    Presence
}
WITH SYNTAX {
    ID          &id
    CRITICALITY &criticality
    TYPE        &Value
    PRESENCE    &presence
}

```

```

-- *****
--
-- Class Definition for Protocol IEs
--
-- *****

SLMAP-PROTOCOL-IES-PAIR ::= CLASS {
    &id                ProtocolIE-ID        UNIQUE,
    &firstCriticality   Criticality,
    &FirstValue,
    &secondCriticality Criticality,
    &SecondValue,
    &presence           Presence
}
WITH SYNTAX {
    ID                &id
    FIRST CRITICALITY &firstCriticality
    FIRST TYPE        &FirstValue
    SECOND CRITICALITY &secondCriticality
    SECOND TYPE       &SecondValue
    PRESENCE          &presence
}

-- *****
--
-- Class Definition for Protocol Extensions
--
-- *****

SLMAP-PROTOCOL-EXTENSION ::= CLASS {
    &id                ProtocolIE-ID        UNIQUE,
    &criticality       Criticality,
    &Extension,
    &presence           Presence
}
WITH SYNTAX {
    ID                &id
    CRITICALITY       &criticality
    EXTENSION         &Extension
    PRESENCE          &presence
}

-- *****
--
-- Class Definition for Private IEs
--
-- *****

SLMAP-PRIVATE-IES ::= CLASS {
    &id                PrivateIE-ID,
    &criticality       Criticality,
    &Value,
    &presence           Presence
}

```

```

}
WITH SYNTAX {
    ID                &id
    CRITICALITY       &criticality
    TYPE              &Value
    PRESENCE          &presence
}

-- *****
--
-- Container for Protocol IES
--
-- *****

ProtocolIE-Container { SLMAP-PROTOCOL-IES : IEsSetParam} ::=
    SEQUENCE (SIZE (0..maxProtocolIEs)) OF
        ProtocolIE-Field {{IEsSetParam}}

ProtocolIE-Single-Container { SLMAP-PROTOCOL-IES : IEsSetParam} ::=
    ProtocolIE-Field {{IEsSetParam}}

ProtocolIE-Field { SLMAP-PROTOCOL-IES : IEsSetParam} ::= SEQUENCE {
    id                SLMAP-PROTOCOL-IES.&id                ({{IEsSetParam}}),
    criticality       SLMAP-PROTOCOL-IES.&criticality        ({{IEsSetParam}}{@id}),
    value             SLMAP-PROTOCOL-IES.&Value              ({{IEsSetParam}}{@id})
}

-- *****
--
-- Container for Protocol IE Pairs
--
-- *****

ProtocolIE-ContainerPair { SLMAP-PROTOCOL-IES-PAIR : IEsSetParam} ::=
    SEQUENCE (SIZE (0..maxProtocolIEs)) OF
        ProtocolIE-FieldPair {{IEsSetParam}}

ProtocolIE-FieldPair { SLMAP-PROTOCOL-IES-PAIR : IEsSetParam} ::= SEQUENCE {
    id                SLMAP-PROTOCOL-IES-PAIR.&id            ({{IEsSetParam}}),
    firstCriticality  SLMAP-PROTOCOL-IES-PAIR.&firstCriticality ({{IEsSetParam}}{@id}),
    firstValue       SLMAP-PROTOCOL-IES-PAIR.&firstValue      ({{IEsSetParam}}{@id}),
    secondCriticality SLMAP-PROTOCOL-IES-PAIR.&secondCriticality ({{IEsSetParam}}{@id}),
    secondValue      SLMAP-PROTOCOL-IES-PAIR.&secondValue     ({{IEsSetParam}}{@id})
}

-- *****
--
-- Container Lists for Protocol IE Containers
--
-- *****

ProtocolIE-ContainerList {INTEGER : lowerBound, INTEGER : upperBound, SLMAP-PROTOCOL-IES : IEsSetParam} ::=
    SEQUENCE (SIZE (lowerBound..upperBound)) OF
        ProtocolIE-Container {{IEsSetParam}}

```

```

ProtocolIE-ContainerPairList { INTEGER : lowerBound, INTEGER : upperBound, SLMAP-PROTOCOL-IES-PAIR : IEsSetParam } ::=
  SEQUENCE (SIZE (lowerBound..upperBound)) OF
    ProtocolIE-ContainerPair {{IEsSetParam}}

-- *****
--
-- Container for Protocol Extensions
--
-- *****

ProtocolExtensionContainer { SLMAP-PROTOCOL-EXTENSION : ExtensionSetParam } ::=
  SEQUENCE (SIZE (1..maxProtocolExtensions)) OF
    ProtocolExtensionField {{ExtensionSetParam}}

ProtocolExtensionField { SLMAP-PROTOCOL-EXTENSION : ExtensionSetParam } ::= SEQUENCE {
  id                SLMAP-PROTOCOL-EXTENSION.&id                ({ExtensionSetParam}),
  criticality       SLMAP-PROTOCOL-EXTENSION.&criticality       ({ExtensionSetParam}@id),
  extensionValue    SLMAP-PROTOCOL-EXTENSION.&Extension         ({ExtensionSetParam}@id)
}

-- *****
--
-- Container for Private IEs
--
-- *****

PrivateIE-Container { SLMAP-PRIVATE-IES : IEsSetParam } ::=
  SEQUENCE (SIZE (1..maxPrivateIEs)) OF
    PrivateIE-Field {{IEsSetParam}}

PrivateIE-Field { SLMAP-PRIVATE-IES : IEsSetParam } ::= SEQUENCE {
  id                SLMAP-PRIVATE-IES.&id                ({IEsSetParam}),
  criticality       SLMAP-PRIVATE-IES.&criticality       ({IEsSetParam}@id),
  value            SLMAP-PRIVATE-IES.&Value             ({IEsSetParam}@id)
}

END

```

9.4 Message Transfer Syntax

SLMAP shall use the ASN.1 Basic Packed Encoding Rules (BASIC-PER) Aligned Variant as transfer syntax as specified in ref. ITU-T Rec. X.691 [8].

9.5 Timers

Void.

10 Handling of Unknown, Unforeseen and Erroneous Protocol Data

Section 10 of TS 36.413 [7] is applicable for the purposes of the present document, with the following additions:

- In case of Abstract Syntax Error, when reporting the *Criticality Diagnostics* IE for not comprehended IE/IE groups or missing IE/IE groups, the *SLmAP Transaction ID* IE shall also be included;
- In case of Logical Error, when reporting the *Criticality Diagnostics* IE, the *SLmAP Transaction ID* IE shall also be included.

Annex A (informative): Change history

Change history						
Date	TSG #	TSG Doc.	CR	Rev	Subject/Comment	New
2012-12	58	RP-121769			Approved in RAN#58 and put under change control	11.0.0
2013-03	59	RP-130209	0001	-	Correction on Setup and Reset	11.1.0
2013-03	59	RP-130237	0002	1	Extending maxEARFCN	11.1.0
2013-03	59	RP-130209	0003	1	NBPS in LTE, UL RTOA Measurement Configuration in Measurement Request	11.1.0
2013-03	59	RP-130316	0004	-	NBPS in LTE, Identifier for SLmAP	11.1.0
2013-06	60	RP-130642	0005	3	Abnormal Conditions for Reset	11.2.0
2013-09	61	RP-131182	0006	1	Correction on Measurement Abort	11.3.0
2013-09	61	RP-131182	0007	1	Correction on Measurement Update	11.3.0
2013-09	61	RP-131182	0008	1	ASN.1 correction Section 9.3.5 UL-RTOA Measurement Configuration	11.3.0
2014-09					Update to Rel-12 version (MCC)	12.0.0
2015-03	67	RP-150356	0009	-	Correction of Error Indication	12.1.0
2015-12					Update to Rel-13 version (MCC)	13.0.0
2016-03	71	RP-160449	0010	-	Correction of tabular for Procedure Code in the Message Type IE	13.1.0

Change history							
Date	Meeting	TDoc	CR	Rev	Cat	Subject/Comment	New version
2017-03	SA#75					Promotion to Release 14 without technical change	14.0.0
2018-06	SA#80	-	-	-	-	Promotion to Release 15 without technical change	15.0.0
2020-07	SA#88-e	-	-	-	-	Update to Rel-16 version (MCC)	16.0.0
2022-03	SA#95-e					Promotion to Release 17 without technical change	17.0.0
2024-03	SA#103	-	-	-	-	Update to Rel-18 version (MCC)	18.0.0

History

Document history		
V18.0.0	May 2024	Publication