

ETSI TS 136 444 V9.0.0 (2010-02)

Technical Specification

**LTE;
Evolved Universal Terrestrial Radio
Access Network (E-UTRAN);
M3 Application Protocol (M3AP)
(3GPP TS 36.444 version 9.0.0 Release 9)**



Reference

DTS/TSGR-0336444v900

Keywords

LTE

ETSI

650 Route des Lucioles
F-06921 Sophia Antipolis Cedex - FRANCE

Tel.: +33 4 92 94 42 00 Fax: +33 4 93 65 47 16

Siret N° 348 623 562 00017 - NAF 742 C
Association à but non lucratif enregistrée à la
Sous-Préfecture de Grasse (06) N° 7803/88

Important notice

Individual copies of the present document can be downloaded from:

<http://www.etsi.org>

The present document may be made available in more than one electronic version or in print. In any case of existing or perceived difference in contents between such versions, the reference version is the Portable Document Format (PDF). In case of dispute, the reference shall be the printing on ETSI printers of the PDF version kept on a specific network drive within ETSI Secretariat.

Users of the present document should be aware that the document may be subject to revision or change of status. Information on the current status of this and other ETSI documents is available at <http://portal.etsi.org/tb/status/status.asp>

If you find errors in the present document, please send your comment to one of the following services:

http://portal.etsi.org/chaicor/ETSI_support.asp

Copyright Notification

No part may be reproduced except as authorized by written permission.
The copyright and the foregoing restriction extend to reproduction in all media.

© European Telecommunications Standards Institute 2010.
All rights reserved.

DECT[™], **PLUGTESTS**[™], **UMTS**[™], **TIPHON**[™], the TIPHON logo and the ETSI logo are Trade Marks of ETSI registered for the benefit of its Members.

3GPP[™] is a Trade Mark of ETSI registered for the benefit of its Members and of the 3GPP Organizational Partners.

LTE[™] is a Trade Mark of ETSI currently being registered for the benefit of its Members and of the 3GPP Organizational Partners.

GSM[®] and the GSM logo are Trade Marks registered and owned by the GSM Association.

Intellectual Property Rights

IPRs essential or potentially essential to the present document may have been declared to ETSI. The information pertaining to these essential IPRs, if any, is publicly available for **ETSI members and non-members**, and can be found in ETSI SR 000 314: *"Intellectual Property Rights (IPRs); Essential, or potentially Essential, IPRs notified to ETSI in respect of ETSI standards"*, which is available from the ETSI Secretariat. Latest updates are available on the ETSI Web server (<http://webapp.etsi.org/IPR/home.asp>).

Pursuant to the ETSI IPR Policy, no investigation, including IPR searches, has been carried out by ETSI. No guarantee can be given as to the existence of other IPRs not referenced in ETSI SR 000 314 (or the updates on the ETSI Web server) which are, or may be, or may become, essential to the present document.

Foreword

This Technical Specification (TS) has been produced by ETSI 3rd Generation Partnership Project (3GPP).

The present document may refer to technical specifications or reports using their 3GPP identities, UMTS identities or GSM identities. These should be interpreted as being references to the corresponding ETSI deliverables.

The cross reference between GSM, UMTS, 3GPP and ETSI identities can be found under <http://webapp.etsi.org/key/queryform.asp>.

Contents

Intellectual Property Rights	2
Foreword.....	2
Foreword.....	5
1 Scope	6
2 References	6
3 Definitions, symbols and abbreviations	6
3.1 Definitions	6
3.2 Symbols.....	7
3.3 Abbreviations	7
4 General	8
4.1 Procedure specification principles.....	8
4.2 Forwards and backwards compatibility.....	8
4.3 Specification notations	8
5 M3AP Services.....	9
6 Services Expected from Signalling Transport.....	9
7 Functions of M3AP	9
8 M3AP Procedures	9
8.1 Elementary procedures	9
8.2 MBMS Session Start	10
8.2.1 General.....	10
8.2.2 Successful Operation	10
8.2.3 Unsuccessful Operation	11
8.2.4 Abnormal Conditions.....	11
8.3 MBMS Session Stop	11
8.3.1 General.....	11
8.3.2 Successful Operation	11
8.3.3 Unsuccessful Operation	12
8.3.4 Abnormal Conditions.....	12
8.4 Error Indication	12
8.4.1 General.....	12
8.4.2 Successful Operation	12
8.4.3 Abnormal Conditions.....	13
8.5 Reset.....	13
8.5.1 General.....	13
8.5.2 Successful Operation	13
8.5.2.1 Reset Procedure Initiated from the MME	13
8.5.2.2 Reset Procedure Initiated from the E-UTRAN	14
8.5.3 Abnormal Conditions.....	15
9 Elements for M3AP Communication	15
9.1 Message Functional Definition and Content	15
9.1.1 General.....	15
9.1.2 Message Contents	15
9.1.2.1 Presence	15
9.1.2.2 Criticality	15
9.1.2.3 Range	16
9.1.2.4 Assigned Criticality.....	16
9.1.3 MBMS SESSION START REQUEST	16
9.1.4 MBMS SESSION START RESPONSE	16
9.1.5 MBMS SESSION START FAILURE.....	17
9.1.6 MBMS SESSION STOP REQUEST	17

9.1.7	MBMS SESSION STOP RESPONSE.....	17
9.1.8	ERROR INDICATION.....	17
9.1.9	RESET	18
9.1.10	RESET ACKNOWLEDGE	18
9.2	Information Element Definitions.....	19
9.2.1	Radio Network Layer Related IEs	19
9.2.1.1	Message Type.....	19
9.2.1.2	Cause.....	19
9.2.1.3	MBMS E-RAB QoS parameters	21
9.2.1.4	Allocation and Retention Priority	22
9.2.1.5	GBR QoS Information	23
9.2.1.6	Bit Rate	24
9.2.1.7	Criticality Diagnostics.....	24
9.2.2	Transport Network Layer Related IEs	25
9.2.2.1	IP Multicast Address	25
9.2.2.2	GTP-TEID.....	25
9.2.3	NAS Related IEs.....	25
9.2.3.1	MCE MBMS M3AP ID	25
9.2.3.2	MME MBMS M3AP ID	25
9.2.3.3	TMGI	25
9.2.3.4	MBMS Session Identity	26
9.2.3.5	MBMS Session Duration	26
9.2.3.6	MBMS Service Area	26
9.2.3.7	PLMN Identity	26
9.2.3.8	Minimum Time to MBMS Data Transfer	27
9.3	Message and Information Element Abstract Syntax (with ASN.1).....	28
9.3.1	General.....	28
9.3.2	Usage of Private Message Mechanism for Non-standard Use.....	28
9.3.3	Elementary Procedure Definitions	28
9.3.4	PDU Definitions	32
9.3.5	Information Element definitions	37
9.3.6	Common definitions	42
9.3.7	Constant definitions	43
9.3.8	Container definitions.....	44
9.4	Message Transfer Syntax	49
9.5	Timers	49
10	Handling of Unknown, Unforeseen and Erroneous Protocol Data	49
Annex A (informative): Change history		50
History		51

Foreword

This Technical Specification has been produced by the 3rd Generation Partnership Project (3GPP).

The contents of the present document are subject to continuing work within the TSG and may change following formal TSG approval. Should the TSG modify the contents of the present document, it will be re-released by the TSG with an identifying change of release date and an increase in version number as follows:

Version x.y.z

where:

- x the first digit:
 - 1 presented to TSG for information;
 - 2 presented to TSG for approval;
 - 3 or greater indicates TSG approved document under change control.
- y the second digit is incremented for all changes of substance, i.e. technical enhancements, corrections, updates, etc.
- z the third digit is incremented when editorial only changes have been incorporated in the document.

1 Scope

The present document specifies the E-UTRAN radio network layer signalling protocol for the M3 interface. The M3 Application Protocol (M3AP) supports the functions of M3 interface by signalling procedures defined in this document. M3AP is developed in accordance to the general principles stated in [2] and [3].

2 References

The following documents contain provisions which, through reference in this text, constitute provisions of the present document.

- References are either specific (identified by date of publication, edition number, version number, etc.) or non-specific.
- For a specific reference, subsequent revisions do not apply.
- For a non-specific reference, the latest version applies. In the case of a reference to a 3GPP document (including a GSM document), a non-specific reference implicitly refers to the latest version of that document *in the same Release as the present document*.

- [1] 3GPP TR 21.905: "Vocabulary for 3GPP Specifications".
- [2] 3GPP TS 36.401: "E-UTRAN Architecture Description".
- [3] 3GPP TS 36.300: 'Evolved Universal Terrestrial Radio Access (E-UTRA) and Evolved Universal Terrestrial Radio Access Network (E-UTRAN); Overall description; Stage 2'.
- [4] ITU-T Recommendation X.691 (07/2002): "Information technology - ASN.1 encoding rules: Specification of Packed Encoding Rules (PER)".
- [5] ITU-T Recommendation X.680 (07/2002): "Information technology - Abstract Syntax Notation One (ASN.1): Specification of basic notation".
- [6] 3GPP TS 23.246: "Multimedia Broadcast/Multicast Service (MBMS); Architecture and functional description".
- [7] 3GPP TS 23.203: "Policy and charging control architecture"
- [8] 3GPP TS 29.061 "Interworking between the Public Land Mobile Network (PLMN) supporting packet based services and Packet Data Networks (PDN)".
- [9] 3GPP TS 36.445: "Evolved Universal Terrestrial Radio Access Network (E-UTRAN); M1 Data Transport".
- [10] 3GPP TS 48.018: "General Packet Radio Service (GPRS); BSS GPRS Protocol (BSSGP)".
- ...

3 Definitions, symbols and abbreviations

3.1 Definitions

For the purposes of the present document, the terms and definitions given in TR 21.905 [1] and the following apply. A term defined in the present document takes precedence over the definition of the same term, if any, in TR 21.905 [1].

Elementary Procedure: M3AP consists of Elementary Procedures (EPs). An Elementary Procedure is a unit of interaction between MCEs and the EPC. These Elementary Procedures are defined separately and are intended to be used to build up complete sequences in a flexible manner. If the independence between some EPs is restricted, it is

described under the relevant EP description. Unless otherwise stated by the restrictions, the EPs may be invoked independently of each other as stand alone procedures, which can be active in parallel. The usage of several M3AP EPs together or together with EPs from other interfaces is specified in stage 2 specifications (e.g. [6] and [3]).

An EP consists of an initiating message and possibly a response message. Two kinds of EPs are used:

- **Class 1:** Elementary Procedures with response (success and/or failure).
- **Class 2:** Elementary Procedures without response.

For Class 1 EPs, the types of responses can be as follows:

Successful:

- A signalling message explicitly indicates that the elementary procedure successfully completed with the receipt of the response.

Unsuccessful:

- A signalling message explicitly indicates that the EP failed.
- On time supervision expiry (i.e. absence of expected response).

Successful and Unsuccessful:

- One signalling message reports both successful and unsuccessful outcome for the different included requests. The response message used is the one defined for successful outcome.

Class 2 EPs are considered always successful.

MCE MBMS M3AP ID: Unique identity, referencing the MBMS-service-associated logical M3-connection within an MCE.

MME MBMS M3AP ID: Unique identity, referencing the MBMS-service-associated logical M3-connection within an MME.

MBMS E-RAB: An MBMS E-RAB refers to the concatenation of an M1 bearer and the corresponding radio bearer, as defined in TS 36.300 [3].

MBMS-service-associated signalling: When M3-AP messages associated to one MBMS service uses the MBMS-service-associated logical M3-connection for association of the message to the MBMS service in MCE and EPC.

MBMS-service-associated logical M3-connection: The MBMS-service-associated logical M3-connection uses the identities *MME MBMS M3AP ID* and *MCE MBMS M3AP ID* according to definition in [23.401]. For a received MBMS service associated M3-AP message the MME identifies the associated MBMS service based on the MME MBMS M3AP ID IE and the MCE identifies the associated MBMS service based on the *MCE MBMS M3AP ID IE*.

3.2 Symbols



3.3 Abbreviations

For the purposes of the present document, the abbreviations given in TR 21.905 [1] and the following apply. An abbreviation defined in the present document takes precedence over the definition of the same abbreviation, if any, in TR 21.905 [1].

DL	Downlink
E-RAB	E-UTRAN Radio Access Bearer
eNB	E-UTRAN NodeB
EP	Elementary Procedure
EPC	Evolved Packet Core
E-UTRAN	Evolved UTRAN
GBR	Guaranteed Bit Rate

GTP	GPRS Tunneling Protocol
IE	Information Element
MBMS	Multimedia Broadcast Multicast Service
MCE	Multi-cell/multicast Coordination Entity
MME	Mobility Management Entity
NAS	Non Access Stratum
PLMN	Public Land Mobile Network
QoS	Quality of Service
TEID	Tunnel Endpoint Identifier
UE	User Equipment
UL	Uplink

4 General

4.1 Procedure specification principles

The principle for specifying the procedure logic is to specify the functional behaviour of the MCE exactly and completely. The EPC functional behaviour is left unspecified.

The following specification principles have been applied for the procedure text in clause 8:

- The procedure text discriminates between:

1) Functionality which "shall" be executed

The procedure text indicates that the receiving node "shall" perform a certain function Y under a certain condition. If the receiving node supports procedure X but cannot perform functionality Y requested in the REQUEST message of a Class 1 EP, the receiving node shall respond with the message used to report unsuccessful outcome for this procedure, containing an appropriate cause value.

2) Functionality which "shall, if supported" be executed

The procedure text indicates that the receiving node "shall, if supported," perform a certain function Y under a certain condition. If the receiving node supports procedure X, but does not support functionality Y, the receiving node shall proceed with the execution of the EP, possibly informing the requesting node about the not supported functionality.

- Any required inclusion of an optional IE in a response message is explicitly indicated in the procedure text. If the procedure text does not explicitly indicate that an optional IE shall be included in a response message, the optional IE shall not be included. For requirements on including *Criticality Diagnostics* IE, see section 10.

4.2 Forwards and backwards compatibility

The forwards and backwards compatibility of the protocol is assured by mechanism where all current and future messages, and IEs or groups of related IEs, include ID and criticality fields that are coded in a standard format that will not be changed in the future. These parts can always be decoded regardless of the standard version.

4.3 Specification notations

For the purposes of the present document, the following notations apply:

Procedure	When referring to an elementary procedure in the specification the Procedure Name is written with the first letters in each word in upper case characters followed by the word "procedure", e.g. MBMS procedure.
Message	When referring to a message in the specification the MESSAGE NAME is written with all letters in upper case characters followed by the word "message", e.g. MESSAGE NAME message.

- IE When referring to an information element (IE) in the specification the *Information Element Name* is written with the first letters in each word in upper case characters and all letters in Italic font followed by the abbreviation "IE", e.g. *Information Element IE*.
- Value of an IE When referring to the value of an information element (IE) in the specification the "Value" is written as it is specified in subclause 9.2 enclosed by quotation marks, e.g. "Value".

5 M3AP Services

M3AP provides the signalling service between MCE and EPC that is required to fulfil the M3AP functions described in clause 7. M3AP services are defined as

MBMS associated services: They are related to the whole M3 interface instance between the MCE and MME utilising an MBMS associated signalling connection.

Non MBMS associated services: They are related to the whole M3 interface instance between the MCE and MME utilising a Non MBMS associated signalling connection.

6 Services Expected from Signalling Transport

The signalling connection shall provide in sequence delivery of M3AP messages. M3AP shall be notified if the signalling connection breaks.

7 Functions of M3AP

The M3AP protocol provides the following functions:

- Session Management. This overall functionality is responsible for starting and stopping MBMS sessions.
- Reset functionality to ensure a well defined initialisation on the M3 interface.
- Error Indication functionality to allow a proper error reporting/handling in cases where no failure messages are defined.

The mapping between the above functions and M3 EPs is shown in the table below.

Table 7-1: Mapping between M3AP functions and M3AP EPs

Function	Elementary Procedure(s)
Session Management	a) MBMS Session Start b) MBMS Session Stop
Error Indication Functionality	Error Indication
Reset Functionality	Reset

8 M3AP Procedures

Editor's Note: Classification of M3AP procedures and procedural specification of M3AP procedures,

8.1 Elementary procedures

In the following tables, all EPs are divided into Class 1 and Class 2 EPs (see subclause 3.1 for explanation of the different classes):

Table 8-1: Class 1 procedures

Elementary Procedure	Initiating Message	Successful Outcome	Unsuccessful Outcome
		Response message	Response message
MBMS Session Start	MBMS SESSION START REQUEST	MBMS SESSION START RESPONSE	MBMS SESSION START FAILURE
MBMS Session Stop	MBMS SESSION STOP REQUEST	MBMS SESSION STOP RESPONSE	
Reset	RESET	RESET ACKNOWLEDGE	

Table 8-2: Class 2 procedures

Elementary Procedure	Message
Error Indication	ERROR INDICATION

The following applies concerning interference between Elementary Procedures:

- The Reset procedure takes precedence over all other EPs.

8.2 MBMS Session Start

8.2.1 General

The purpose of the MBMS Session Start procedure is to request the MCE to determine whether an MBMS E-RAB for an upcoming MBMS Session for a given MBMS Bearer Service can be accommodated by the E-UTRAN. The MCE is also requested to establish an MBMS service associated logical M3 connection. The MBMS Session Start procedure is triggered by the EPC (MME).

The procedure uses MBMS Service associated signaling.

8.2.2 Successful Operation

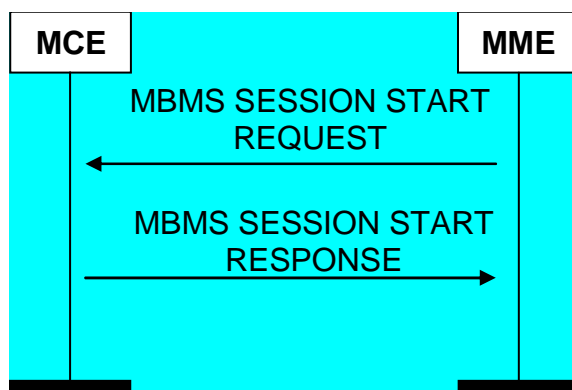


Figure 8.2.2-1: MBMS Session Start procedure. Successful operation.

The MME initiates the procedure by sending an MBMS SESSION START **REQUEST** message to the MCE.

The MCE shall use the information in the *MBMS E-RAB QoS parameters* IE to determine whether the requested configuration can be accommodated within E-UTRAN. If necessary the MCE shall establish or modify the resources currently allocated for MBMS according to the values of the *Allocation and Retention Priority* IE (priority level and pre-emption indicators).

The MCE shall report to the MME, in the MBMS SESSION START RESPONSE message the result of the requested MBMS E-RAB.

In cases where the MCE is unable to successfully establish the MBMS E-RAB the MCE shall report to the MME using MBMS SESSION START FAILURE including a suitable cause value.

8.2.3 Unsuccessful Operation

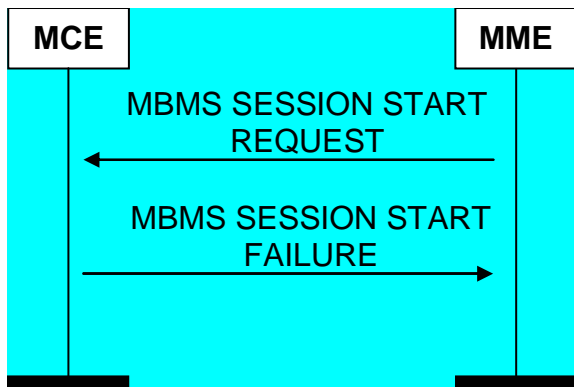


Figure 8.2.3-1: MBMS SESSION START procedure. Unsuccessful operation.

If the MCE determines that the E-UTRAN is not able to accommodate the requested configuration (e.g. the necessary MBMS resources for the MBMS Session could not be established), the MME shall be informed by the MBMS SESSION START FAILURE message.

8.2.4 Abnormal Conditions

Not applicable.

8.3 MBMS Session Stop

8.3.1 General

The purpose of the MBMS Session Stop procedure is to inform the MCE that an ongoing MBMS Session for a given MBMS Bearer Service is about to end and that the E-UTRAN should release the allocated MBMS E-RAB resources and that the associated MBMS service associated logical M3 connection should also be released. The MBMS Session Stop procedure is triggered by the EPC (MME).

The procedure uses MBMS Service associated signaling.

8.3.2 Successful Operation

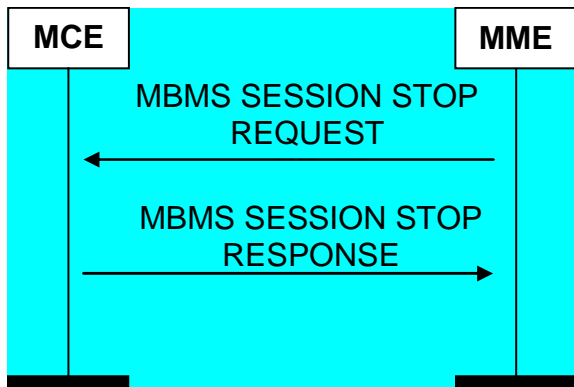


Figure 8.3.2-1: MBMS SESSION STOP procedure. Successful operation.

The MME initiates the procedure by sending an MBMS SESSION STOP REQUEST message to the MCE.

8.3.3 Unsuccessful Operation

Not applicable.

8.3.4 Abnormal Conditions

Not applicable.

8.4 Error Indication

8.4.1 General

The Error Indication procedure is initiated by a node to report detected errors in one incoming message, provided they cannot be reported by an appropriate failure message.

If the error situation arises due to reception of a message utilising MBMS-service-associated signalling, then the Error Indication procedure uses MBMS-service-associated signalling. Otherwise the procedure uses non MBMS-service-associated signalling.

8.4.2 Successful Operation

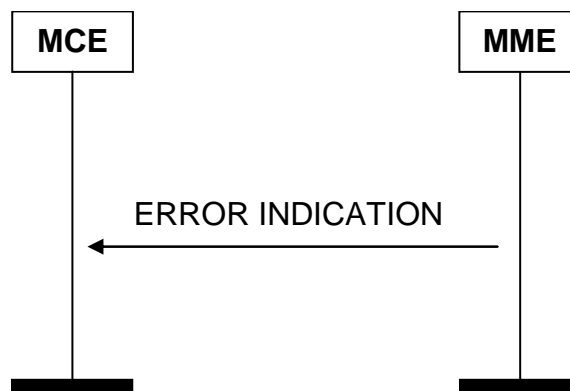


Figure 8.4.2-1. Error Indication procedure, MME originated. Successful operation.

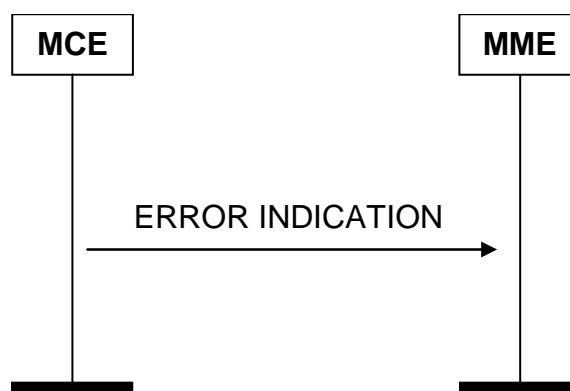


Figure 8.4.2.1-2. Error Indication procedure, MCE originated. Successful operation.

When the conditions defined in clause 10 are fulfilled, the Error Indication procedure is initiated by an ERROR INDICATION message sent from the receiving node.

The ERROR INDICATION message shall contain at least either the *Cause* IE or the *Criticality Diagnostics* IE.

In case the Error Indication procedure is triggered by utilising MBMS-service-associated signalling the *MCE MBMS M3AP ID* IE and the *MME MBMS M3AP* IE shall be included in the ERROR INDICATION message. If one or both of

MCE MBMS Service M3AP ID IE and the *MME MBMS Service M3AP IE* are not correct, the cause shall be set to appropriate value e.g. "Unknown or already allocated MCE MBMS M3AP ID", "Unknown or already allocated MME MBMS M3AP" or "Unknown or inconsistent pair of MBMS M3AP ID".

Editors Note: necessity of these cause values FFS.

8.4.3 Abnormal Conditions

Not applicable.

8.5 Reset

8.5.1 General

The purpose of the Reset procedure is to initialise or re-initialise the E-UTRAN, or part of E-UTRAN M3AP MBMS-related contexts, in the event of a failure in the EPC or vice versa.

The procedure uses non MBMS-service associated signalling.

8.5.2 Successful Operation

8.5.2.1 Reset Procedure Initiated from the MME

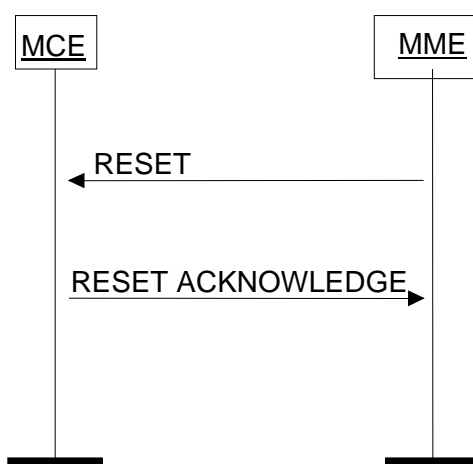


Figure 8.5.2.1-1: Reset procedure initiated from the MME. Successful operation.

In the event of a failure at the MME, which has resulted in the loss of some or all transaction reference information, a RESET message shall be sent to the MCE.

At reception of RESET message the MCE shall release all allocated resources on M3 related to MBMS-service association(s) indicated explicitly or implicitly in the RESET message and remove the MBMS-service contexts including MBMS M3AP IDs.

After the MCE has released all assigned M3 resources and the MBMS M3AP IDs for all indicated MBMS service associations which can be used for new MBMS-service-associated logical M3-connections over the M3 interface, the MCE shall respond with the RESET ACKNOWLEDGE message. The MCE does not need to wait for the release of resources to be completed before returning the RESET ACKNOWLEDGE message.

If the RESET message contains the *MBMS-Service-associated logical M3-connection list IE*, then:

- The MCE shall use the *MME MBMS M3AP ID IE* and/or the *MCE MBMS M3AP ID IE* to explicitly identify the MBMS service association(s) to be reset.

- The MCE shall in the RESET ACKNOWLEDGE message include, for each MBMS service association to be reset, the *MBMS-Service-associated logical M3-connection Item IE* in the *MBMS-Service-associated logical M3-connection list IE*. The *MBMS-Service-associated logical M3-connection Item IEs* shall be in the same order as received in the RESET message and shall include also unknown MBMS-Service-associated logical M3-connections. Empty *MBMS-Service-associated logical M3-connection Item IEs*, received in the RESET message, may be omitted in the RESET ACKNOWLEDGE message.
- If the *MME MBMS M3AP ID IE* is included in the *MBMS-Service-associated logical M3-connection Item IE* for an MBMS service association, the MCE shall include the *MME MBMS M3AP ID IE* in the corresponding *MBMS-Service-associated logical M3-connection Item IE* in the RESET ACKNOWLEDGE message.
- If the *MCE MBMS M3AP ID IE* is included in an *MBMS-Service-associated logical M3-connection Item IE* for an MBMS service association, the MCE shall include the *MCE MBMS M3AP ID IE* in the corresponding *MBMS-Service-associated logical M3-connection Item IE* in the RESET ACKNOWLEDGE message.

Interactions with other procedures:

If the RESET message is received, any other ongoing procedure (except another Reset procedure) on the same M3 interface related to an MBMS service association, indicated explicitly or implicitly in the RESET message, shall be aborted.

8.5.2.2 Reset Procedure Initiated from the E-UTRAN

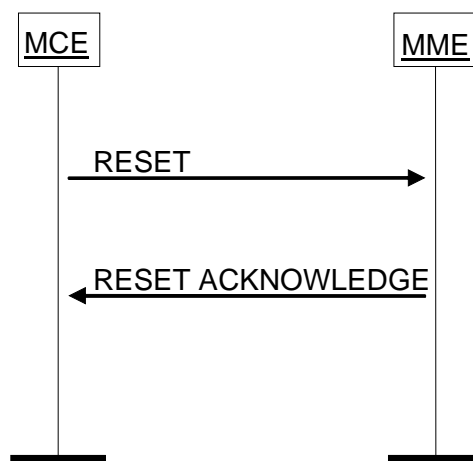


Figure 8.5.2.2-1: Reset procedure initiated from the E-UTRAN. Successful operation.

In the event of a failure at the MCE, which has resulted in the loss of some or all transaction reference information, a RESET message shall be sent to the MME.

At reception of RESET message the MME shall release all allocated resources on M3 related to the MBMS service association(s) indicated explicitly or implicitly in the RESET message and remove the M3AP ID for the indicated MBMS service associations.

After the MME has released all assigned M3 resources and the MBMS M3AP IDs for all indicated MBMS service associations which can be used for new MBMS-service-associated logical M3-connections over the M3 interface, the MME shall respond with the RESET ACKNOWLEDGE message.

If the RESET message contains the *MBMS-Service-associated logical M3-connection list IE*, then:

- The MME shall use the *MME MBMS M3AP ID IE* and/or the *MCE MBMS M3AP ID IE* to explicitly identify the MBMS service association(s) to be reset.
- The MME shall in the RESET ACKNOWLEDGE message include, for each MBMS service association to be reset, the *MBMS-Service-associated logical M3-connection Item IE* in the *MBMS-Service-associated logical M3-connection list IE*. The *MBMS-Service-associated logical M3-connection Item IEs* shall be in the same order as received in the RESET message and shall include also unknown MBMS-Service-associated logical M3-connections. Empty *MBMS-Service-associated logical M3-connection Item IEs*, received in the RESET message, may be omitted in the RESET ACKNOWLEDGE message.

- If the *MME MBMS M3AP ID* IE is included in the *MBMS-Service-associated logical M3-connection Item* IE for an MBMS service association, the MME shall include the *MME MBMS M3AP ID* IE in the corresponding *MBMS-Service-associated logical M3-connection Item* IE in the RESET ACKNOWLEDGE message.
- If the *MCE MBMS M3AP ID* IE is included in an *MBMS-Service-associated logical M3-connection Item* IE for an MBMS service association, the MME shall include the *MCE MBMS M3AP ID* IE in the corresponding *MBMS-Service-associated logical M3-connection Item* IE in the RESET ACKNOWLEDGE message.

Interactions with other procedures:

If the RESET message is received, any other ongoing procedure (except another Reset procedure) on the same M3 interface related to an MBMS service association, indicated explicitly or implicitly in the RESET message, shall be aborted.

8.5.3 Abnormal Conditions

Not applicable.

9 Elements for M3AP Communication

9.1 Message Functional Definition and Content

Editor's note: Tabular format tables content (e.g. semantic description, criticality assignment, etc.) will be updated in forthcoming meetings.

9.1.1 General

Subclauses 9.1 and 9.2 describe the structure of the messages and information elements required for the M3AP protocol in tabular format. Subclause 9.3 provides the corresponding ASN.1 definition.

The following attributes are used for the tabular description of the messages and information elements: Presence, Range Criticality and Assigned Criticality.

9.1.2 Message Contents

9.1.2.1 Presence

All information elements in the message descriptions below are marked mandatory, optional or conditional according to table 4.

Table 9-1: Meaning of abbreviations used in M3AP messages

Abbreviation	Meaning
M	IEs marked as Mandatory (M) shall always be included in the message.
O	IEs marked as Optional (O) may or may not be included in the message.
C	IEs marked as Conditional (C) shall be included in a message only if the condition is satisfied. Otherwise the IE shall not be included.

9.1.2.2 Criticality

Each Information Element or Group of Information Elements may have criticality information applied to it. Following cases are possible:

Table 9-2: Meaning of content within "Criticality" column

Abbreviation	Meaning
–	No criticality information is applied explicitly.
YES	Criticality information is applied. This is usable only for non-repeatable IEs
GLOBAL	The IE and all its repetitions together have one common criticality information. This is usable only for repeatable IEs.
EACH	Each repetition of the IE has its own criticality information. It is not allowed to assign different criticality values to the repetitions. This is usable only for repeatable IEs.

9.1.2.3 Range

The Range column indicates the allowed number of copies of repetitive IEs/IE groups.

9.1.2.4 Assigned Criticality

This column provides the actual criticality information as defined in subclause 10.3.2, if applicable.

9.1.3 MBMS SESSION START REQUEST

This message is sent by the MME to establish an MBMS E-RAB and an M3AP signalling connection.

Direction: MME → MCE.

IE/Group Name	Presence	Range	IE type and reference	Semantics description	Criticality	Assigned Criticality
Message Type	M		9.2.1.1		YES	reject
MME MBMS M3AP ID	M		9.2.3.2		YES	reject
TMGI	M		9.2.3.3		YES	reject
MBMS Session Identity	O		9.2.3.4		YES	ignore
MBMS E-RAB QoS parameters	M		9.2.1.3		YES	reject
MBMS Session Duration	M		9.2.3.5		YES	reject
MBMS Service Area	M		9.2.3.6		YES	reject
Minimum Time to MBMS Data Transfer	M		9.2.3.8		YES	reject
TNL Information	M				YES	reject
>IP Multicast Address	M		9.2.2.1		-	
>GTP DL TEID	M		GTP TEID 9.2.2.2		-	

9.1.4 MBMS SESSION START RESPONSE

This message is sent by the MCE to report the successful outcome of the request from the MBMS SESSION START message.

Direction: MCE → MME.

IE/Group Name	Presence	Range	IE type and reference	Semantics description	Criticality	Assigned Criticality
Message Type	M		9.2.1.1		YES	reject
MME MBMS M3AP ID	M		9.2.3.2		YES	ignore
MCE MBMS M3AP ID	M		9.2.3.1		YES	ignore
Criticality Diagnostics	O		9.2.1.7		YES	ignore

9.1.5 MBMS SESSION START FAILURE

This message is sent by the MCE to report the unsuccessful outcome of the request from the MBMS SESSION START message.

Direction: MCE → MME.

IE/Group Name	Presence	Range	IE type and reference	Semantics description	Criticality	Assigned Criticality
Message Type	M		9.2.1.1		YES	reject
MME MBMS M3AP ID	M		9.2.3.2		YES	ignore
Cause	M		9.2.1.2		YES	ignore
Criticality Diagnostics	O		9.2.1.7		YES	ignore

9.1.6 MBMS SESSION STOP REQUEST

This message is sent by the MME to release the corresponding MBMS E-RAB and the MBMS service associated logical M3 connection.

Direction: MME → MCE.

IE/Group Name	Presence	Range	IE type and reference	Semantics description	Criticality	Assigned Criticality
Message Type	M		9.2.1.1		YES	reject
MME MBMS M3AP ID	M		9.2.3.2		YES	reject
MCE MBMS M3AP ID	M		9.2.3.1		YES	reject

9.1.7 MBMS SESSION STOP RESPONSE

This message is sent by the MCE to acknowledge the MBMS SESSION STOP message.

Direction: MCE → MME.

IE/Group Name	Presence	Range	IE type and reference	Semantics description	Criticality	Assigned Criticality
Message Type	M		9.2.1.1		YES	reject
MME MBMS M3AP ID	M		9.2.3.2		YES	ignore
MCE MBMS M3AP ID	M		9.2.3.1		YES	ignore
Criticality Diagnostics	O		9.2.1.7		YES	ignore

9.1.8 ERROR INDICATION

This message is sent by both the MME and the MCE and is used to indicate that some error has been detected in the node

Direction: MCE → MME and MME → MCE.

IE/Group Name	Presence	Range	IE type and reference	Semantics description	Criticality	Assigned Criticality
Message Type	M		9.2.1.1		YES	ignore
MME MBMS M3AP ID	O		9.2.3.2		YES	ignore
MCE MBMS M3AP ID	O		9.2.3.1		YES	ignore
Cause	O		9.2.1.2		YES	ignore
Criticality Diagnostics	O		9.2.1.7		YES	ignore

9.1.9 RESET

This message is sent by both the MME and the MCE and is used to request that the M3 interface, or parts of the M3 interface, to be reset.

Direction: MME → MCE and MCE → MME

IE/Group Name	Presence	Range	IE type and reference	Semantics description	Criticality	Assigned Criticality
Message Type	M		9.2.1.1		YES	reject
Cause	M		9.2.1.2		YES	ignore
Choice Reset Type	M				YES	reject
>M3 interface						
>> Reset All	M		ENUMERATED (Reset all, ...)		–	–
>Part of M3 interface						
>> MBMS-Service-associated logical M3-connection list	M				–	–
>>> MBMS-Service-associated logical M3-connection Item		1 to < maxnoofIndividualM3ConnectionsToReset >			EACH	reject
>>>> MME MBMS M3AP ID	O		9.2.3.2		–	–
>>>> MCE MBMS M3AP ID	O		9.2.3.1		–	–

Range bound	Explanation
maxnoofIndividualM3ConnectionsToReset	Maximum no. of MBMS-Service-associated logical M3-connections allowed to reset in one message. Value is 256.

9.1.10 RESET ACKNOWLEDGE

This message is sent by both the MME and the MCE as a response to a RESET message.

Direction: MCE → MME and MME → MCE.

IE/Group Name	Presence	Range	IE type and reference	Semantics description	Criticality	Assigned Criticality
Message Type	M		9.2.1.1		YES	reject
MBMS-Service-associated logical M3-connection list	O				YES	ignore
> MBMS-Service-associated logical M3-connection Item		1 to < maxnoofIndividualM3ConnectionsToReset >			EACH	ignore
>> MME MBMS M3AP ID	O		9.2.3.2		–	–
>> MCE MBMS M3AP ID	O		9.2.3.1		–	–
Criticality Diagnostics	O		9.2.1.7		YES	ignore

Range bound	Explanation
maxnoofIndividualM3ConnectionsToReset	Maximum no. of MBMS-Service-associated logical M3-connections allowed to reset in one message. Value is 256.

9.2 Information Element Definitions

9.2.1 Radio Network Layer Related IEs

9.2.1.1 Message Type

The *Message Type* IE uniquely identifies the message being sent. It is mandatory for all messages.

IE/Group Name	Presence	Range	IE type and reference	Semantics description
Message Type				Assumed max no of messages is 256.
>Procedure Code	M		(MBMS Session Start, MBMS Session Stop, Error Indication, Reset, ...)	
>Type of Message	M		CHOICE (Initiating Message, Successful Outcome, Unsuccessful Outcome, ...)	

9.2.1.2 Cause

The purpose of the *Cause* IE is to indicate the reason for a particular event for the M3AP protocol.

IE/Group Name	Presence	Range	IE Type and Reference	Semantics Description
CHOICE Cause Group	M			
>Radio Network Layer				
>>Radio Network Layer Cause	M		ENUMERATED (Unknown or already allocated MCE MBMS M3AP ID, Unknown or already allocated MME MBMS M3AP ID, Unknown or inconsistent pair of MBMS M3AP IDs, Radio resources not available, Invalid QoS combination, Interaction with other procedure, Not supported QCI value, Unspecified, ...)	
>Transport Layer				
>>Transport Layer Cause	M		ENUMERATED (Transport Resource Unavailable, Unspecified, ...)	
> NAS				
>> NAS Cause	M		ENUMERATED (Unspecified, ...)	
>Protocol				
>>Protocol Cause	M		ENUMERATED (Transfer Syntax Error, Abstract Syntax Error (Reject), Abstract Syntax Error (Ignore and Notify), Message not Compatible with Receiver State, Semantic Error, Abstract Syntax Error (Falsely Constructed Message), Unspecified, ...)	
>Misc				
>>Miscellaneous Cause	M		ENUMERATED (Control Processing Overload, Not enough User Plane Processing Resources, Hardware Failure, O&M Intervention, Unspecified, ...)	

The meaning of the different cause values is described in the following table. In general, "not supported" cause values indicate that the related capability is missing. On the other hand, "not available" cause values indicate that the related capability is present, but insufficient resources were available to perform the requested action.

Radio Network Layer cause	Meaning
Unknown or already allocated MCE MBMS M3AP ID	The action failed because the MCE MBMS M3AP ID is either unknown, or (for a first message received at the MCE) is known and already allocated to an existing MBMS service related context.
Unknown or already allocated MME MBMS M3AP ID	The action failed because the MME MBMS M3AP ID is either unknown, or (for a first message received at the MCE) is known and already allocated to an existing context.
Unknown or inconsistent pair of MBMS M3AP IDs	The action failed because both MBMS M3AP IDs are unknown, or are known but do not define a single MBMS context.
Radio resources not available	No requested radio resources are available
Invalid QoS combination	The action was failed because of invalid QoS combination.
Interaction with other procedure	The action is due to an ongoing interaction with another procedure
Not supported QCI Value	The E-RAB setup failed because the requested QCI is not supported.
Unspecified	Sent for radio network layer cause when none of the specified cause values applies

Transport Layer cause	Meaning
Transport Resource Unavailable	The required transport resources are not available
Unspecified	Sent for transport network layer cause when none of the specified cause values applies.

NAS cause	Meaning
Unspecified	Sent for NAS cause when none of the specified cause values applies.

Protocol cause	Meaning
Transfer Syntax Error	The received message included a transfer syntax error.
Abstract Syntax Error (Reject)	The received message included an abstract syntax error and the concerning criticality indicated "reject".
Abstract Syntax Error (Ignore And Notify)	The received message included an abstract syntax error and the concerning criticality indicated "ignore and notify".
Message Not Compatible With Receiver State	The received message was not compatible with the receiver state.
Semantic Error	The received message included a semantic error.
Abstract Syntax Error (Falsely Constructed Message)	The received message contained IEs or IE groups in wrong order or with too many occurrences.
Unspecified	Sent for protocol cause when none of the specified cause values applies.
Miscellaneous cause	Meaning
Control Processing Overload	Control processing overload
Hardware Failure	Action related to hardware failure
O&M Intervention	The action is due to O&M intervention.
Unspecified Failure	Sent when none of the above cause values applies and the cause is not related to any of the categories Radio Network Layer, Transport Network Layer, NAS or Protocol.

9.2.1.3 MBMS E-RAB QoS parameters

This IE defines the QoS to be applied to an MBMS E-RAB.

IE/Group Name	Presence	Range	IE type and reference	Semantics description
MBMS E-RAB QoS Parameters				
>QCI	M		INTEGER (0..255)	QoS Class Identifier defined in [6]. Coding is specified in [7].
>Allocation and Retention Priority	M		9.2.1.4	
>GBR QoS Information	M		9.2.1.5	This IE applies to GBR bearers only and shall be ignored otherwise.

9.2.1.4 Allocation and Retention Priority

This IE specifies the relative importance of an MBMS E-RAB compared to other MBMS E-RABs along the aspects allocation and retention.

IE/Group Name	Presence	Range	IE type and reference	Semantics description
Allocation/Retention Priority				
>Priority Level	M		INTEGER (0..15)	<p>Desc.: This IE should be understood as "priority of allocation and retention" (see [6]).</p> <p>Usage: Value 15 means "no priority". Values between 1 and 14 are ordered in decreasing order of priority, i.e. 1 is the highest and 14 the lowest. Value 0 shall be treated as a logical error if received.</p>
>Pre-emption Capability	M		ENUMERATED (shall not trigger pre-emption, may trigger pre-emption)	<p>Desc.: This IE indicates the pre-emption capability of the request on other MBMS E-RABs</p> <p>Usage: The MBMS E-RAB shall not pre-empt other MBMS E-RABs or, the MBMS E-RAB may pre-empt other MBMS E-RABs. The Pre-emption Capability indicator applies to the allocation of resources for an MBMS E-RAB and as such it provides the trigger to the pre-emption procedures/processes of the MBMS eNB.</p>
>Pre-emption Vulnerability	M		ENUMERATED (not pre-emptable, pre-emptable)	<p>Desc.: This IE indicates the vulnerability of the MBMS E-RAB to preemption of other MBMS E-RABs.</p> <p>Usage: The MBMS E-RAB shall not be pre-empted by other MBMS E-RABs or the MBMS E-RAB may be pre-empted by other RABs. Pre-emption Vulnerability indicator applies for the entire duration of the MBMS E-RAB, unless modified and as such indicates whether the MBMS E-RAB is a target of the pre-emption procedures/processes of the eNB</p>

9.2.1.5 GBR QoS Information

This IE indicates the maximum and guaranteed bit rates of a GBR bearer for downlink and uplink.

IE/Group Name	Presence	Range	IE type and reference	Semantics description
MBMS E-RAB Maximum Bit Rate Downlink	M		Bit Rate 9.2.1.6	Desc.: This IE indicates the maximum downlink MBMS E-RAB Bit Rate (i.e. from the EPC to E-UTRAN) for this bearer.
MBMS E-RAB Guaranteed Bit Rate Downlink	M		Bit Rate 9.2.1.6	Desc.: This IE indicates the downlink guaranteed MBMS E-RAB Bit Rate (provided that there is data to deliver) from the EPC to the E-UTRAN for this bearer.

9.2.1.6 Bit Rate

This IE indicates the number of bits delivered by E-UTRAN in UL or to E-UTRAN in DL within a period of time, divided by the duration of the period. It is used, for example, to indicate the maximum or guaranteed bit rate for a GBR bearer, or an aggregated maximum bit rate.

IE/Group Name	Presence	Range	IE type and reference	Semantics description
Bit Rate			INTEGER (0..10,000,000,000)	The unit is: bit/s

9.2.1.7 Criticality Diagnostics

The *Criticality Diagnostics* IE is sent by the MME or the MCE when parts of a received message have not been comprehended or were missing, or if the message contained logical errors. When applicable, it contains information about which IEs were not comprehended or were missing.

For further details on how to use the *Criticality Diagnostics* IE, (see section 10).

IE/Group Name	Presence	Range	IE type and reference	Semantics description
Procedure Code	O		INTEGER (0..255)	Procedure Code is to be used if Criticality Diagnostics is part of Error Indication procedure, and not within the response message of the same procedure that caused the error
Triggering Message	O		ENUMERATED(initiating message, successful outcome, unsuccessful outcome)	The Triggering Message is used only if the Criticality Diagnostics is part of Error Indication procedure.
Procedure Criticality	O		ENUMERATED(reject, ignore, notify)	This Procedure Criticality is used for reporting the Criticality of the Triggering message (Procedure).
Information Element Criticality Diagnostics		0 to <maxnoof errors>		
>IE Criticality	M		ENUMERATED(reject, ignore, notify)	The IE Criticality is used for reporting the criticality of the triggering IE. The value 'ignore' shall not be used.
>IE ID	M		INTEGER (0..65535)	The IE ID of the not understood or missing IE
>Type of Error	M		ENUMERATED(not understood, missing, ...)	

Range bound	Explanation
maxnooferrors	Maximum no. of IE errors allowed to be reported with a single message. The value for maxnooferrors is 256.

9.2.2 Transport Network Layer Related IEs

9.2.2.1 IP Multicast Address

This information element is an IP address to be used for the user plane transport.

IE/Group Name	Presence	Range	IE type and reference	Semantics description
Transport Layer Address	M		OCTET STRING (4..16)	The Radio Network Layer is not supposed to interpret the address information. It should pass it to the transport layer for interpretation. For details on the Transport Layer Address, see ref. [9].

9.2.2.2 GTP-TEID

This information element is the GTP Tunnel Endpoint Identifier to be used for the user plane transport between eNB and the MBMS-GW.

IE/Group Name	Presence	Range	IE type and reference	Semantics description
GTP TEID	M		OCTET STRING (4)	

9.2.3 NAS Related IEs

9.2.3.1 MCE MBMS M3AP ID

The MCE MBMS M3AP ID uniquely identifies the MBMS Service association over the M3 interface within the MCE.

IE/Group Name	Presence	Range	IE type and reference	Semantics description
MCE MBMS M3AP ID	M		INTEGER (0 .. 65535)	

9.2.3.2 MME MBMS M3AP ID

The MME MBMS M3AP ID uniquely identifies the MBMS Service association over the M3 interface within the MME.

IE/Group Name	Presence	Range	IE type and reference	Semantics description
MME MBMS M3AP ID	M		INTEGER (0 .. 65535)	

9.2.3.3 TMGI

The TMGI uniquely identifies the MBMS Bearer Service.

IE/Group Name	Presence	Range	IE type and reference	Semantics description
TMGI				
>PLMN identity	M		9.2.3.7	
>Service ID	M		OCTET STRING (SIZE (3))	

9.2.3.4 MBMS Session Identity

The MBMS Session Identity identifies the session of a MBMS Bearer Service in E-UTRAN and is used by the UE to recognise repetitions of a session.

This IE is transparent to RAN.

IE/Group Name	Presence	Range	IE type and reference	Semantics description
MBMS Session Identity	M		OCTET STRING (SIZE (1))	Coded same way as the MBMS Session Identity IE as defined in [8].

9.2.3.5 MBMS Session Duration

This IE defines the duration of the MBMS Session.

IE/Group Name	Presence	Range	IE type and reference	Semantics description
MBMS Session Duration	M		OCTET STRING (SIZE (3))	Coded as the value part of MBMS-Session-Duration AVP as defined in [8].

9.2.3.6 MBMS Service Area

The MBMS Service Area IE consists of a list of one or several MBMS Service Area Identities where each MBMS Service Area Identity is frequency agnostic and can be mapped onto one or more cells.

IE/Group Name	Presence	Range	IE type and reference	Semantics description
MBMS Service Area	M		OCTET STRING	Value part coded per MBMS Service Area AVP as defined in [8].

9.2.3.7 PLMN Identity

This information element indicates the PLMN Identity.

IE/Group Name	Presence	Range	IE type and reference	Semantics description
PLMN identity	M		OCTET STRING (SIZE (3))	<ul style="list-style-type: none"> - digits 0 to 9, encoded 0000 to 1001, - 1111 used as filler digit, two digits per octet, - bits 4 to 1 of octet n encoding digit 2n-1 - bits 8 to 5 of octet n encoding digit 2n <p>-The Selected PLMN identity consists of 3 digits from MCC followed by either</p> <ul style="list-style-type: none"> -a filler digit plus 2 digits from MNC (in case of 2 digit MNC) or -3 digits from MNC (in case of a 3 digit MNC).

9.2.3.8 Minimum Time to MBMS Data Transfer

This IE denotes the minimum time occurring between the transmission of the MBMS SESSION START REQUEST message to the MCE and the actual start of the data transfer. The coding of this element is described in [11].

IE/Group Name	Presence	Range	IE type and reference	Semantics description
Minimum Time to MBMS Data Transfer	M		OCTET STRING (SIZE (1))	Coded as the value part of <i>Time to MBMS Data Transfer</i> IE defined in [10].

9.3 Message and Information Element Abstract Syntax (with ASN.1)

9.3.1 General

M3AP ASN.1 definition conforms with [4] and [5].

Sub clause 9.3 presents the Abstract Syntax of the M3AP protocol with ASN.1. In case there is contradiction between the ASN.1 definition in this sub clause and the tabular format in sub clause 9.1 and 9.2, the ASN.1 shall take precedence, except for the definition of conditions for the presence of conditional elements, in which the tabular format shall take precedence.

The ASN.1 definition specifies the structure and content of M3AP messages. M3AP messages can contain any IEs specified in the object set definitions for that message without the order or number of occurrence being restricted by ASN.1. However, for this version of the standard, a sending entity shall construct a M3AP message according to the PDU definitions module and with the following additional rules (Note that in the following IE means an IE in the object set with an explicit id. If one IE needed to appear more than once in one object set, then the different occurrences have different IE ids):

- IEs shall be ordered (in an IE container) in the order they appear in object set definitions.
- Object set definitions specify how many times IEs may appear. An IE shall appear exactly once if the presence field in an object has value "mandatory". An IE may appear at most once if the presence field in an object has value "optional" or "conditional". If in a tabular format there is multiplicity specified for an IE (i.e. an IE list) then in the corresponding ASN.1 definition the list definition is separated into two parts. The first part defines an IE container list in which the list elements reside. The second part defines list elements. The IE container list appears as an IE of its own. For this version of the standard an IE container list may contain only one kind of list elements.

If a M3AP message that is not constructed as defined above is received, this shall be considered as Abstract Syntax Error, and the message shall be handled as defined for Abstract Syntax Error in clause 10.

9.3.2 Usage of Private Message Mechanism for Non-standard Use

The private message mechanism for non-standard use may be used:

- for special operator (and/or vendor) specific features considered not to be part of the basic functionality, i.e. the functionality required for a complete and high-quality specification in order to guarantee multivendor inter-operability.
- by vendors for research purposes, e.g. to implement and evaluate new algorithms/features before such features are proposed for standardisation.

The private message mechanism shall not be used for basic functionality. Such functionality shall be standardised.

9.3.3 Elementary Procedure Definitions

```
-- *****
--
-- Elementary Procedure definitions
--
-- *****
```

```

M3AP-PDU-Descriptions {
itu-t (0) identified-organization (4) etsi (0) mobileDomain (0)
eps-Access (21) modules (3) m3ap (5) version1 (1) m3ap-PDU-Descriptions (0) }
DEFINITIONS AUTOMATIC TAGS ::=

BEGIN

-- *****
--
-- IE parameter types from other modules.
--
-- *****

IMPORTS
    Criticality,
    ProcedureCode
FROM M3AP-CommonDataTypes

    MBMSSessionStartRequest,
    MBMSSessionStartResponse,
    MBMSSessionStartFailure,
    MBMSSessionStopRequest,
    MBMSSessionStopResponse,
    ErrorIndication,
    Reset,
    ResetAcknowledge,
    PrivateMessage

FROM M3AP-PDU-Contents

    id-mBMSSessionStart,
    id-mBMSSessionStop,
    id-errorIndication,
    id-Reset,
    id-privateMessage
FROM M3AP-Constants;

-- *****
--
-- Interface Elementary Procedure Class
--
-- *****

M3AP-ELEMENTARY-PROCEDURE ::= CLASS {
    &InitiatingMessage
    &SuccessfulOutcome           OPTIONAL,
    &UnsuccessfulOutcome         OPTIONAL,
    &procedureCode               ProcedureCode UNIQUE,
    &criticality                  Criticality   DEFAULT ignore
}
WITH SYNTAX {
    INITIATING MESSAGE          &InitiatingMessage

```

```

    [SUCCESSFUL OUTCOME      &SuccessfulOutcome]
    [UNSUCCESSFUL OUTCOME   &UnsuccessfulOutcome]
    PROCEDURE CODE         &procedureCode
    [CRITICALITY           &criticality]
}

-- *****
--
-- Interface PDU Definition
--
-- *****

M3AP-PDU ::= CHOICE {
    initiatingMessage    InitiatingMessage,
    successfulOutcome    SuccessfulOutcome,
    unsuccessfulOutcome  UnsuccessfulOutcome,
    ...
}

InitiatingMessage ::= SEQUENCE {
    procedureCode    M3AP-ELEMENTARY-PROCEDURE.&procedureCode    ({M3AP-ELEMENTARY-PROCEDURES}),
    criticality      M3AP-ELEMENTARY-PROCEDURE.&criticality        ({M3AP-ELEMENTARY-PROCEDURES}@procedureCode),
    value           M3AP-ELEMENTARY-PROCEDURE.&InitiatingMessage  ({M3AP-ELEMENTARY-PROCEDURES}@procedureCode)}
}

SuccessfulOutcome ::= SEQUENCE {
    procedureCode    M3AP-ELEMENTARY-PROCEDURE.&procedureCode    ({M3AP-ELEMENTARY-PROCEDURES}),
    criticality      M3AP-ELEMENTARY-PROCEDURE.&criticality        ({M3AP-ELEMENTARY-PROCEDURES}@procedureCode),
    value           M3AP-ELEMENTARY-PROCEDURE.&SuccessfulOutcome  ({M3AP-ELEMENTARY-PROCEDURES}@procedureCode)}
}

UnsuccessfulOutcome ::= SEQUENCE {
    procedureCode    M3AP-ELEMENTARY-PROCEDURE.&procedureCode    ({M3AP-ELEMENTARY-PROCEDURES}),
    criticality      M3AP-ELEMENTARY-PROCEDURE.&criticality        ({M3AP-ELEMENTARY-PROCEDURES}@procedureCode),
    value           M3AP-ELEMENTARY-PROCEDURE.&UnsuccessfulOutcome ({M3AP-ELEMENTARY-PROCEDURES}@procedureCode)}
}

-- *****
--
-- Interface Elementary Procedure List
--
-- *****

M3AP-ELEMENTARY-PROCEDURES M3AP-ELEMENTARY-PROCEDURE ::= {
    M3AP-ELEMENTARY-PROCEDURES-CLASS-1      |
    M3AP-ELEMENTARY-PROCEDURES-CLASS-2      ,
    ...
}

M3AP-ELEMENTARY-PROCEDURES-CLASS-1 M3AP-ELEMENTARY-PROCEDURE ::= {
    mBMSsessionStart      |
    mBMSsessionStop      |
    reset                  ,
}

```

```

}
...
}
M3AP-ELEMENTARY-PROCEDURES-CLASS-2 M3AP-ELEMENTARY-PROCEDURE ::= {
  errorIndication
  privateMessage
  ...
}

-- *****
--
-- Interface Elementary Procedures
--
-- *****

mBMSsessionStart M3AP-ELEMENTARY-PROCEDURE ::= {
  INITIATING MESSAGE      MBMSsessionStartRequest
  SUCCESSFUL OUTCOME      MBMSsessionStartResponse
  UNSUCCESSFUL OUTCOME    MBMSsessionStartFailure
  PROCEDURE CODE          id-mBMSsessionStart
  CRITICALITY              reject
}

mBMSsessionStop M3AP-ELEMENTARY-PROCEDURE ::= {
  INITIATING MESSAGE      MBMSsessionStopRequest
  SUCCESSFUL OUTCOME      MBMSsessionStopResponse
  PROCEDURE CODE          id-mBMSsessionStop
  CRITICALITY              reject
}

errorIndication M3AP-ELEMENTARY-PROCEDURE ::= {
  INITIATING MESSAGE      ErrorIndication
  PROCEDURE CODE          id-errorIndication
  CRITICALITY              ignore
}

reset M3AP-ELEMENTARY-PROCEDURE ::= {
  INITIATING MESSAGE      Reset
  SUCCESSFUL OUTCOME      ResetAcknowledge
  PROCEDURE CODE          id-Reset
  CRITICALITY              reject
}

privateMessage M3AP-ELEMENTARY-PROCEDURE ::= {
  INITIATING MESSAGE      PrivateMessage
  PROCEDURE CODE          id-privateMessage
  CRITICALITY              ignore
}

END

```


9.3.4 PDU Definitions

```
-- *****
--
-- PDU definitions for M3AP.
--
-- *****

M3AP-PDU-Contents {
itu-t (0) identified-organization (4) etsi (0) mobileDomain (0)
eps-Access (21) modules (3) m3ap (5) version1 (1) m3ap-PDU-Contents (1) }
DEFINITIONS AUTOMATIC TAGS ::=

BEGIN

-- *****
--
-- IE parameter types from other modules.
--
-- *****

IMPORTS

    Cause,
    CriticalityDiagnostics,
    MBMS-E-RAB-QoS-Parameters,
    MBMS-Service-associatedLogicalM3-ConnectionItem,
    MBMS-Service-Area,
    MBMS-Session-Duration,
    MBMS-Session-ID,
    MBMS-Service-Area-List-Item,
    MCE-MBMS-M3AP-ID,
    MinimumTimeToMBMSDataTransfer,
    MME-MBMS-M3AP-ID,
    TimeToWait,
    TMGI,
    TNL-Information

FROM M3AP-IEs

    PrivateIE-Container{},
    ProtocolExtensionContainer{},
    ProtocolIE-Container{},
    ProtocolIE-ContainerList{},
    ProtocolIE-ContainerPair{},
    ProtocolIE-ContainerPairList{},
    ProtocolIE-Single-Container{},
    M3AP-PRIVATE-IES,
    M3AP-PROTOCOL-EXTENSION,
    M3AP-PROTOCOL-IES,
    M3AP-PROTOCOL-IES-PAIR

FROM M3AP-Containers
```

```

id-MCE-MBMS-M3AP-ID,
id-MME-MBMS-M3AP-ID,
id-TMGI,
id-MBMS-Session-ID,
id-MBMS-E-RAB-QoS-Parameters,
id-MBMS-Session-Duration,
id-MBMS-Service-Area,
id-TNL-Information,
id-CriticalityDiagnostics,
id-Cause,
id-MBMS-Service-Area-List,
id-MBMS-Service-Area-List-Item,
id-TimeToWait,
id-ResetType,
id-MBMS-Service-associatedLogicalM3-ConnectionItem,
id-MBMS-Service-associatedLogicalM3-ConnectionListResAck,
id-MinimumTimeToMBMSDataTransfer,
maxnoofMBMSServiceAreasPerMCE,
maxnooferrors,
maxNrOfIndividualM3ConnectionsToReset

FROM M3AP-Constants;

-- *****
--
-- MBMS SESSION START REQUEST
--
-- *****

MBMSSessionStartRequest ::= SEQUENCE {
    protocolIEs          ProtocolIE-Container    {{MBMSSessionStartRequest-IEs}},
    ...
}

MBMSSessionStartRequest-IEs M3AP-PROTOCOL-IES ::= {
    { ID id-MME-MBMS-M3AP-ID          CRITICALITY reject TYPE MME-MBMS-M3AP-ID          PRESENCE mandatory } |
    { ID id-TMGI                      CRITICALITY reject TYPE TMGI                      PRESENCE mandatory } |
    { ID id-MBMS-Session-ID           CRITICALITY ignore TYPE MBMS-Session-ID           PRESENCE optional } |
    { ID id-MBMS-E-RAB-QoS-Parameters CRITICALITY reject TYPE MBMS-E-RAB-QoS-Parameters PRESENCE mandatory } |
    { ID id-MBMS-Session-Duration     CRITICALITY reject TYPE MBMS-Session-Duration     PRESENCE mandatory } |
    { ID id-MBMS-Service-Area         CRITICALITY reject TYPE MBMS-Service-Area         PRESENCE mandatory } |
    { ID id-MinimumTimeToMBMSDataTransfer CRITICALITY reject TYPE MinimumTimeToMBMSDataTransfer PRESENCE mandatory } |
    { ID id-TNL-Information           CRITICALITY reject TYPE TNL-Information           PRESENCE mandatory } ,
    ...
}

-- *****
--
-- MBMS SESSION START RESPONSE
--
-- *****

MBMSSessionStartResponse ::= SEQUENCE {
    protocolIEs          ProtocolIE-Container    {{ MBMSSessionStartResponse-IEs}},

```

```

}
...
}
MBMSSessionStartResponse-IEs M3AP-PROTOCOL-IES ::= {
  { ID id-MME-MBMS-M3AP-ID          CRITICALITY ignore TYPE MME-MBMS-M3AP-ID          PRESENCE mandatory } |
  { ID id-MCE-MBMS-M3AP-ID          CRITICALITY ignore TYPE MCE-MBMS-M3AP-ID          PRESENCE mandatory } |
  { ID id-CriticalityDiagnostics    CRITICALITY ignore TYPE CriticalityDiagnostics    PRESENCE optional  },
  ...
}

-- *****
--
-- MBMS SESSION START FAILURE
--
-- *****

MBMSSessionStartFailure ::= SEQUENCE {
  protocolIEs          ProtocolIE-Container    {{ MBMSSessionStartFailure-IEs}},
  ...
}

MBMSSessionStartFailure-IEs M3AP-PROTOCOL-IES ::= {
  { ID id-MME-MBMS-M3AP-ID          CRITICALITY ignore TYPE MME-MBMS-M3AP-ID          PRESENCE mandatory } |
  { ID id-Cause                    CRITICALITY ignore TYPE Cause                    PRESENCE mandatory } |
  { ID id-CriticalityDiagnostics    CRITICALITY ignore TYPE CriticalityDiagnostics    PRESENCE optional  },
  ...
}

-- *****
--
-- MBMS SESSION STOP REQUEST
--
-- *****

MBMSSessionStopRequest ::= SEQUENCE {
  protocolIEs          ProtocolIE-Container    {{MBMSSessionStopRequest-IEs}},
  ...
}

MBMSSessionStopRequest-IEs M3AP-PROTOCOL-IES ::= {
  { ID id-MME-MBMS-M3AP-ID          CRITICALITY ignore TYPE MME-MBMS-M3AP-ID          PRESENCE mandatory } |
  { ID id-MCE-MBMS-M3AP-ID          CRITICALITY ignore TYPE MCE-MBMS-M3AP-ID          PRESENCE mandatory } ,
  ...
}

-- *****
--
-- MBMS SESSION STOP RESPONSE
--
-- *****

MBMSSessionStopResponse ::= SEQUENCE {

```

```

    protocolIEs          ProtocolIE-Container    {{ MBMSSessionStopResponse-IEs}},
  }
}

MBMSSessionStopResponse-IEs M3AP-PROTOCOL-IES ::= {
  { ID id-MME-MBMS-M3AP-ID          CRITICALITY ignore  TYPE MME-MBMS-M3AP-ID          PRESENCE mandatory } |
  { ID id-MCE-MBMS-M3AP-ID          CRITICALITY ignore  TYPE MCE-MBMS-M3AP-ID          PRESENCE mandatory } |
  { ID id-CriticalityDiagnostics    CRITICALITY ignore  TYPE CriticalityDiagnostics    PRESENCE optional   } ,
  ...
}

-- *****
--
-- ERROR INDICATION
--
-- *****

ErrorIndication ::= SEQUENCE {
  protocolIEs          ProtocolIE-Container    {{ErrorIndication-IEs}},
  ...
}

ErrorIndication-IEs M3AP-PROTOCOL-IES ::= {
  { ID id-MME-MBMS-M3AP-ID          CRITICALITY ignore  TYPE MME-MBMS-M3AP-ID          PRESENCE optional   } |
  { ID id-MCE-MBMS-M3AP-ID          CRITICALITY ignore  TYPE MCE-MBMS-M3AP-ID          PRESENCE optional   } |
  { ID id-Cause                     CRITICALITY ignore  TYPE Cause                     PRESENCE optional   } |
  { ID id-CriticalityDiagnostics    CRITICALITY ignore  TYPE CriticalityDiagnostics    PRESENCE optional   } ,
  ...
}

-- *****
--
-- Reset
--
-- *****

Reset ::= SEQUENCE {
  protocolIEs          ProtocolIE-Container    { {ResetIEs} },
  ...
}

ResetIEs M3AP-PROTOCOL-IES ::= {
  { ID id-Cause                     CRITICALITY ignore  TYPE Cause                     PRESENCE mandatory } |
  { ID id-ResetType                CRITICALITY reject  TYPE ResetType                 PRESENCE mandatory },
  ...
}

ResetType ::= CHOICE {
  m3-Interface          ResetAll,
  partOfM3-Interface    MBMS-Service-associatedLogicalM3-ConnectionListRes,
  ...
}

```

```

}

ResetAll ::= ENUMERATED {
    reset-all,
    ...
}

MBMS-Service-associatedLogicalM3-ConnectionListRes ::= SEQUENCE (SIZE(1.. maxNrOfIndividualM3ConnectionsToReset)) OF ProtocolIE-Single-Container {
    { MBMS-Service-associatedLogicalM3-ConnectionItemRes } }

MBMS-Service-associatedLogicalM3-ConnectionItemRes M3AP-PROTOCOL-IES ::= {
    { ID id-MBMS-Service-associatedLogicalM3-ConnectionItem CRITICALITY reject TYPE MBMS-Service-associatedLogicalM3-ConnectionItem PRESENCE
    mandatory },
    ...
}

-- *****
--
-- Reset Acknowledge
--
-- *****

ResetAcknowledge ::= SEQUENCE {
    protocolIEs ProtocolIE-Container { {ResetAcknowledgeIEs} },
    ...
}

ResetAcknowledgeIEs M3AP-PROTOCOL-IES ::= {
    { ID id-MBMS-Service-associatedLogicalM3-ConnectionListResAck CRITICALITY ignore TYPE MBMS-Service-associatedLogicalM3-
    ConnectionListResAck PRESENCE optional } |
    { ID id-CriticalityDiagnostics CRITICALITY ignore TYPE CriticalityDiagnostics PRESENCE optional },
    ...
}

MBMS-Service-associatedLogicalM3-ConnectionListResAck ::= SEQUENCE (SIZE(1.. maxNrOfIndividualM3ConnectionsToReset)) OF ProtocolIE-Single-Container
{ { MBMS-Service-associatedLogicalM3-ConnectionItemResAck } }

MBMS-Service-associatedLogicalM3-ConnectionItemResAck M3AP-PROTOCOL-IES ::= {
    { ID id-MBMS-Service-associatedLogicalM3-ConnectionItem CRITICALITY ignore TYPE MBMS-Service-associatedLogicalM3-ConnectionItem PRESENCE
    mandatory },
    ...
}

-- *****
--
-- PRIVATE MESSAGE
--
-- *****

PrivateMessage ::= SEQUENCE {
    privateIEs PrivateIE-Container {{PrivateMessage-IEs}},

```

```

    ...
}
PrivateMessage-IEs M3AP-PRIVATE-IES ::= {
    ...
}
END

```

9.3.5 Information Element definitions

```

-- *****
--
-- Information Element Definitions
--
-- *****

M3AP-IEs {
itu-t (0) identified-organization (4) etsi (0) mobileDomain (0)
eps-Access (21) modules (3) m3ap (5) version1 (1) m3ap-IEs (2) }

DEFINITIONS AUTOMATIC TAGS ::=

BEGIN

IMPORTS

    maxnoofMBMSServiceAreasPerMCE,
    maxnooferrors

FROM M3AP-Constants

    Criticality,
    ProcedureCode,
    ProtocolIE-ID,
    TriggeringMessage
FROM M3AP-CommonDataTypes

    ProtocolExtensionContainer{},
    ProtocolIE-Single-Container{},
    M3AP-PROTOCOL-EXTENSION,
    M3AP-PROTOCOL-IES
FROM M3AP-Containers;

-- A

AllocationAndRetentionPriority ::= SEQUENCE {
    priorityLevel          PriorityLevel,
    pre-emptionCapability  Pre-emptionCapability,
    pre-emptionVulnerability Pre-emptionVulnerability,
    iE-Extensions         ProtocolExtensionContainer { {AllocationAndRetentionPriority-ExtIEs} } OPTIONAL,
    ...

```

```
}
AllocationAndRetentionPriority-ExtIEs M3AP-PROTOCOL-EXTENSION ::= {
  ...
}

-- B
BitRate ::= INTEGER (0..1000000000)

-- C
Cause ::= CHOICE {
  radioNetwork      CauseRadioNetwork,
  transport         CauseTransport,
  nAS               CauseNAS,
  protocol          CauseProtocol,
  misc              CauseMisc,
  ...
}

CauseMisc ::= ENUMERATED {
  control-processing-overload,
  not-enough-user-plane-processing-resources,
  hardware-failure,
  om-intervention,
  unspecified,
  ...
}

CauseNAS ::= ENUMERATED {
  unspecified,
  ...
}

CauseProtocol ::= ENUMERATED {
  transfer-syntax-error,
  abstract-syntax-error-reject,
  abstract-syntax-error-ignore-and-notify,
  message-not-compatible-with-receiver-state,
  semantic-error,
  abstract-syntax-error-falsely-constructed-message,
  unspecified,
  ...
}

CauseRadioNetwork ::= ENUMERATED {
  unknown-or-already-allocated-MME-MBMS-M3AP-ID,
  unknown-or-already-allocated-MCE-MBMS-M3AP-ID,
  unknown-or-inconsistent-pair-of-MBMS-M3AP-IDs,
  radio-resources-not-available,
  invalid-QoS-combination,
  interaction-with-other-procedure,
}
```

```

    not-supported-QCI-value,
    unspecified,
    ...
}

CauseTransport ::= ENUMERATED {
    transport-resource-unavailable,
    unspecified,
    ...
}

CriticalityDiagnostics ::= SEQUENCE {
    procedureCode                ProcedureCode                OPTIONAL,
    triggeringMessage            TriggeringMessage            OPTIONAL,
    procedureCriticality         Criticality                OPTIONAL,
    iEsCriticalityDiagnostics    CriticalityDiagnostics-IE-List OPTIONAL,
    iE-Extensions                ProtocolExtensionContainer { {CriticalityDiagnostics-ExtIEs} } OPTIONAL,
    ...
}

CriticalityDiagnostics-ExtIEs M3AP-PROTOCOL-EXTENSION ::= {
    ...
}

CriticalityDiagnostics-IE-List ::= SEQUENCE (SIZE (1..maxnooferrors)) OF
    SEQUENCE {
        iECriticality            Criticality,
        iE-ID                    ProtocolIE-ID,
        typeOfError              TypeOfError,
        iE-Extensions            ProtocolExtensionContainer { {CriticalityDiagnostics-IE-List-ExtIEs} } OPTIONAL,
        ...
    }

CriticalityDiagnostics-IE-List-ExtIEs M3AP-PROTOCOL-EXTENSION ::= {
    ...
}

-- D
-- E
-- F
-- G

GBR-QosInformation ::= SEQUENCE {
    mBMS-E-RAB-MaximumBitrateDL    BitRate,
    mBMS-E-RAB-GuaranteedBitrateDL  BitRate,
    iE-Extensions                  ProtocolExtensionContainer { { GBR-QosInformation-ExtIEs} } OPTIONAL,
    ...
}

GBR-QosInformation-ExtIEs M3AP-PROTOCOL-EXTENSION ::= {
    ...
}

```



```

}
GTP-TEID ::= OCTET STRING (SIZE (4))

-- H
-- I

IPMulticastAddress ::= OCTET STRING (SIZE(4..16, ...))

-- J
-- K
-- L
-- M

MBMS-E-RAB-QoS-Parameters ::= SEQUENCE {
    qCI QCI,
    allocationAndRetentionPriority AllocationAndRetentionPriority,
    gbrQoSInformation GBR-QoSInformation OPTIONAL,
    iE-Extensions ProtocolExtensionContainer { { MBMS-E-RAB-QoS-Parameters-ExtIEs } } OPTIONAL,
    ...
}

MBMS-E-RAB-QoS-Parameters-ExtIEs M3AP-PROTOCOL-EXTENSION ::= {
    ...
}

MBMS-Service-associatedLogicalM3-ConnectionItem ::= SEQUENCE {
    mME-MBMS-M3AP-ID MME-MBMS-M3AP-ID OPTIONAL,
    eCE-MBMS-M3AP-ID MCE-MBMS-M3AP-ID OPTIONAL,
    iE-Extensions ProtocolExtensionContainer { { MBMS-Service-associatedLogicalM3-ConnectionItemExtIEs } } OPTIONAL,
    ...
}

MBMS-Service-associatedLogicalM3-ConnectionItemExtIEs M3AP-PROTOCOL-EXTENSION ::= {
    ...
}

MBMS-Service-Area ::= OCTET STRING

MBMS-Service-Area-List-Item ::= SEQUENCE {
    mbmsServiceArea MBMS-Service-Area,
    iE-Extensions ProtocolExtensionContainer { { MBMS-Service-Area-List-Item-ExtIEs } } OPTIONAL,
    ...
}

MBMS-Service-Area-List-Item-ExtIEs M3AP-PROTOCOL-EXTENSION ::= {
    ...
}

MBMS-Session-Duration ::= OCTET STRING (SIZE (3))

MBMS-Session-ID ::= OCTET STRING (SIZE (1))

```

```
MCE-MBMS-M3AP-ID          ::= INTEGER (0..4294967295)
MinimumTimeToMBMSDataTransfer ::= OCTET STRING (SIZE (1))
MME-MBMS-M3AP-ID          ::= INTEGER (0..4294967295)
-- N
-- O
-- P

PLMN-Identity ::= OCTET STRING (SIZE(3))

Pre-emptionCapability ::= ENUMERATED {
    shall-not-trigger-pre-emption,
    may-trigger-pre-emption
}

Pre-emptionVulnerability ::= ENUMERATED {
    not-pre-emptable,
    pre-emptable
}

PriorityLevel          ::= INTEGER { spare (0), highest (1), lowest (14), no-priority (15) } (0..15)
-- Q

QCI ::= INTEGER (0..255)
-- R
-- S
-- T

TimeToWait ::= ENUMERATED {v1s, v2s, v5s, v10s, v20s, v60s, ...}

TMGI ::= SEQUENCE {
    pLMNidentity          PLMN-Identity,
    serviceID             OCTET STRING (SIZE (3)),
    iE-Extensions         ProtocolExtensionContainer { {TMGI-ExtIEs} } OPTIONAL
}

TMGI-ExtIEs M3AP-PROTOCOL-EXTENSION ::= {
    ...
}

TNL-Information ::= SEQUENCE {
    iPMCAAddress          IPMulticastAddress,
    gTP-DLTEID           GTP-TEID,
    iE-Extensions         ProtocolExtensionContainer { {TNL-Information-ExtIEs} } OPTIONAL,
    ...
}
```

```
TNL-Information-ExtIEs M3AP-PROTOCOL-EXTENSION ::= {
  ...
}
```

```
TypeOfError ::= ENUMERATED {
  not-understood,
  missing,
  ...
}
```

```
-- U
-- V
-- W
-- X
-- Y
-- Z
```

```
END
```

9.3.6 Common definitions

```
-- *****
--
-- Common definitions
--
-- *****

M3AP-CommonDataTypes {
  itu-t (0) identified-organization (4) etsi (0) mobileDomain (0)
  eps-Access (21) modules (3) m3ap (5) version1 (1) m3ap-CommonDataTypes (3) }

DEFINITIONS AUTOMATIC TAGS ::=

BEGIN

-- *****
--
-- Extension constants
--
-- *****

maxPrivateIEs                INTEGER ::= 65535
maxProtocolExtensions         INTEGER ::= 65535
maxProtocolIEs                INTEGER ::= 65535

-- *****
--
-- Common Data Types
--
-- *****
```

```

Criticality      ::= ENUMERATED { reject, ignore, notify }
Presence        ::= ENUMERATED { optional, conditional, mandatory }
PrivateIE-ID    ::= CHOICE {
    local          INTEGER (0.. maxPrivateIEs),
    global         OBJECT IDENTIFIER
}
ProcedureCode   ::= INTEGER (0..255)

ProtocolIE-ID   ::= INTEGER (0..maxProtocolIEs)

TriggeringMessage ::= ENUMERATED { initiating-message, successful-outcome, unsuccessful-outcome}

END

```

9.3.7 Constant definitions

```

-- *****
--
-- Constant definitions
--
-- *****

M3AP-Constants {
itu-t (0) identified-organization (4) etsi (0) mobileDomain (0)
eps-Access (21) modules (3) m3ap (5) version1 (1) m3ap-Constants (4) }

DEFINITIONS AUTOMATIC TAGS ::=

BEGIN

IMPORTS
    ProcedureCode,
    ProtocolIE-ID
FROM M3AP-CommonDataTypes;

-- *****
--
-- Elementary Procedures
--
-- *****

id-mBMSsessionStart          ProcedureCode ::= 0
id-mBMSsessionStop          ProcedureCode ::= 1
id-errorIndication           ProcedureCode ::= 2
id-privateMessage            ProcedureCode ::= 3
id-Reset                     ProcedureCode ::= 4

```

```

-- *****
--
-- Lists
--
-- *****

maxnoofMBMSServiceAreasPerMCE          INTEGER ::= 256 --FFS
maxnooferrors                           INTEGER ::= 256
maxNrOfIndividualM3ConnectionsToReset    INTEGER ::= 256

-- *****
--
-- IEs
--
-- *****

id-MME-MBMS-M3AP-ID                     ProtocolIE-ID ::= 0
id-MCE-MBMS-M3AP-ID                     ProtocolIE-ID ::= 1
id-TMGI                                  ProtocolIE-ID ::= 2
id-MBMS-Session-ID                       ProtocolIE-ID ::= 3
id-MBMS-E-RAB-QoS-Parameters             ProtocolIE-ID ::= 4
id-MBMS-Session-Duration                 ProtocolIE-ID ::= 5
id-MBMS-Service-Area                     ProtocolIE-ID ::= 6
id-TNL-Information                       ProtocolIE-ID ::= 7
id-CriticalityDiagnostics                ProtocolIE-ID ::= 8
id-Cause                                  ProtocolIE-ID ::= 9
id-MBMS-Service-Area-List                ProtocolIE-ID ::= 10
id-MBMS-Service-Area-List-Item           ProtocolIE-ID ::= 11
id-TimeToWait                             ProtocolIE-ID ::= 12
id-ResetType                             ProtocolIE-ID ::= 13
id-MBMS-Service-associatedLogicalM3-ConnectionItem ProtocolIE-ID ::= 14
id-MBMS-Service-associatedLogicalM3-ConnectionListResAck ProtocolIE-ID ::= 15
id-MinimumTimeToMBMSDataTransfer         ProtocolIE-ID ::= 16
END

```

9.3.8 Container definitions

```

-- *****
--
-- Container definitions
--
-- *****

M3AP-Containers {
itu-t (0) identified-organization (4) etsi (0) mobileDomain (0)
eps-Access (21) modules (3) m3ap (5) version1 (1) m3ap-Containers (5) }

DEFINITIONS AUTOMATIC TAGS ::=

```

```

BEGIN
-- *****
--
-- IE parameter types from other modules.
--
-- *****

IMPORTS
    maxPrivateIEs,
    maxProtocolExtensions,
    maxProtocolIEs,
    Criticality,
    Presence,
    PrivateIE-ID,
    ProtocolIE-ID
FROM M3AP-CommonDataTypes;

-- *****
--
-- Class Definition for Protocol IEs
--
-- *****

M3AP-PROTOCOL-IES ::= CLASS {
    &id          ProtocolIE-ID          UNIQUE,
    &criticality Criticality,
    &Value,
    &presence    Presence
}
WITH SYNTAX {
    ID          &id
    CRITICALITY &criticality
    TYPE        &Value
    PRESENCE    &presence
}

-- *****
--
-- Class Definition for Protocol IEs
--
-- *****

M3AP-PROTOCOL-IES-PAIR ::= CLASS {
    &id          ProtocolIE-ID          UNIQUE,
    &firstCriticality Criticality,
    &FirstValue,
    &secondCriticality Criticality,
    &SecondValue,
    &presence    Presence
}
WITH SYNTAX {
    ID          &id

```

```

    FIRST CRITICALITY      &firstCriticality
    FIRST TYPE              &FirstValue
    SECOND CRITICALITY     &secondCriticality
    SECOND TYPE            &SecondValue
    PRESENCE                &presence
}

-- *****
--
-- Class Definition for Protocol Extensions
--
-- *****

M3AP-PROTOCOL-EXTENSION ::= CLASS {
    &id                ProtocolIE-ID          UNIQUE,
    &criticality       Criticality,
    &Extension,
    &presence          Presence
}
WITH SYNTAX {
    ID                &id
    CRITICALITY       &criticality
    EXTENSION         &Extension
    PRESENCE          &presence
}

-- *****
--
-- Class Definition for Private IEs
--
-- *****

M3AP-PRIVATE-IES ::= CLASS {
    &id                PrivateIE-ID,
    &criticality       Criticality,
    &Value,
    &presence          Presence
}
WITH SYNTAX {
    ID                &id
    CRITICALITY       &criticality
    TYPE              &Value
    PRESENCE          &presence
}

-- *****
--
-- Container for Protocol IEs
--
-- *****

ProtocolIE-Container {M3AP-PROTOCOL-IES : IEsSetParam} ::=
    SEQUENCE (SIZE (0..maxProtocolIEs)) OF
    ProtocolIE-Field {{IEsSetParam}}

```

```

ProtocolIE-Single-Container {M3AP-PROTOCOL-IES : IEsSetParam} ::=
  ProtocolIE-Field {{IEsSetParam}}

ProtocolIE-Field {M3AP-PROTOCOL-IES : IEsSetParam} ::= SEQUENCE {
  id                M3AP-PROTOCOL-IES.&id                ({IEsSetParam}),
  criticality       M3AP-PROTOCOL-IES.&criticality       ({IEsSetParam}{@id}),
  value            M3AP-PROTOCOL-IES.&Value            ({IEsSetParam}{@id})
}

-- *****
--
-- Container for Protocol IE Pairs
--
-- *****

ProtocolIE-ContainerPair {M3AP-PROTOCOL-IES-PAIR : IEsSetParam} ::=
  SEQUENCE (SIZE (0..maxProtocolIEs)) OF
  ProtocolIE-FieldPair {{IEsSetParam}}

ProtocolIE-FieldPair {M3AP-PROTOCOL-IES-PAIR : IEsSetParam} ::= SEQUENCE {
  id                M3AP-PROTOCOL-IES-PAIR.&id                ({IEsSetParam}),
  firstCriticality  M3AP-PROTOCOL-IES-PAIR.&firstCriticality  ({IEsSetParam}{@id}),
  firstValue       M3AP-PROTOCOL-IES-PAIR.&FirstValue       ({IEsSetParam}{@id}),
  secondCriticality M3AP-PROTOCOL-IES-PAIR.&secondCriticality ({IEsSetParam}{@id}),
  secondValue      M3AP-PROTOCOL-IES-PAIR.&SecondValue      ({IEsSetParam}{@id})
}

-- *****
--
-- Container Lists for Protocol IE Containers
--
-- *****

ProtocolIE-ContainerList {INTEGER : lowerBound, INTEGER : upperBound, M3AP-PROTOCOL-IES : IEsSetParam} ::=
  SEQUENCE (SIZE (lowerBound..upperBound)) OF
  ProtocolIE-Container {{IEsSetParam}}

ProtocolIE-ContainerPairList {INTEGER : lowerBound, INTEGER : upperBound, M3AP-PROTOCOL-IES-PAIR : IEsSetParam} ::=
  SEQUENCE (SIZE (lowerBound..upperBound)) OF
  ProtocolIE-ContainerPair {{IEsSetParam}}

-- *****
--
-- Container for Protocol Extensions
--
-- *****

ProtocolExtensionContainer {M3AP-PROTOCOL-EXTENSION : ExtensionSetParam} ::=
  SEQUENCE (SIZE (1..maxProtocolExtensions)) OF
  ProtocolExtensionField {{ExtensionSetParam}}

ProtocolExtensionField {M3AP-PROTOCOL-EXTENSION : ExtensionSetParam} ::= SEQUENCE {
  id                M3AP-PROTOCOL-EXTENSION.&id                ({ExtensionSetParam}),

```



```
    criticality      M3AP-PROTOCOL-EXTENSION.&criticality  ({ExtensionSetParam}{@id}),
    extensionValue   M3AP-PROTOCOL-EXTENSION.&Extension    ({ExtensionSetParam}{@id})
}

-- *****
--
-- Container for Private IEs
--
-- *****

PrivateIE-Container {M3AP-PRIVATE-IES : IEsSetParam} ::=
    SEQUENCE (SIZE (1..maxPrivateIEs)) OF
        PrivateIE-Field {{IEsSetParam}}

PrivateIE-Field {M3AP-PRIVATE-IES : IEsSetParam} ::= SEQUENCE {
    id                M3AP-PRIVATE-IES.&id                ({IEsSetParam}),
    criticality       M3AP-PRIVATE-IES.&criticality       ({IEsSetParam}{@id}),
    value             M3AP-PRIVATE-IES.&Value             ({IEsSetParam}{@id})
}

END
```

9.4 Message Transfer Syntax

M3AP shall use the ASN.1 Basic Packed Encoding Rules (BASIC-PER) Aligned Variant as transfer syntax as specified in ref. [4].

9.5 Timers

10 Handling of Unknown, Unforeseen and Erroneous Protocol Data

Editor's Note: Description of applied error handling.

Annex A (informative): Change history

TSG #	TSG Doc.	CR	Rev	Subject/Comment	New
2008-02				First draft	0.0.0
2009-10				Second draft with content	0.0.1
2009-11				For RAN3#66	0.1.0
2009-11				Capture agreements in RAN3#66	1.0.0
2009-12				Presented for approval at RAN#46	2.0.0
46	RP-091254			Approved at RAN#46	9.0.0

History

Document history		
V9.0.0	February 2010	Publication