

ETSI TS 133 102 V3.3.1 (2000-01)

Technical Specification

Universal Mobile Telecommunications System (UMTS); 3G Security; Security Architecture (3G TS 33.102 version 3.3.1 Release 1999)



Reference

DTS/TSGS-0333102U

Keywords

UMTS

ETSI

Postal address

F-06921 Sophia Antipolis Cedex - FRANCE

Office address

650 Route des Lucioles - Sophia Antipolis
Valbonne - FRANCE
Tel.: +33 4 92 94 42 00 Fax: +33 4 93 65 47 16
Siret N° 348 623 562 00017 - NAF 742 C
Association à but non lucratif enregistrée à la
Sous-Préfecture de Grasse (06) N° 7803/88

Internet

secretariat@etsi.fr
Individual copies of this ETSI deliverable
can be downloaded from
<http://www.etsi.org>
If you find errors in the present document, send your
comment to: editor@etsi.fr

Important notice

This ETSI deliverable may be made available in more than one electronic version or in print. In any case of existing or perceived difference in contents between such versions, the reference version is the Portable Document Format (PDF). In case of dispute, the reference shall be the printing on ETSI printers of the PDF version kept on a specific network drive within ETSI Secretariat.

Copyright Notification

No part may be reproduced except as authorized by written permission.
The copyright and the foregoing restriction extend to reproduction in all media.

© European Telecommunications Standards Institute 2000.
All rights reserved.

Intellectual Property Rights

IPRs essential or potentially essential to the present document may have been declared to ETSI. The information pertaining to these essential IPRs, if any, is publicly available for **ETSI members and non-members**, and can be found in SR 000 314: *"Intellectual Property Rights (IPRs); Essential, or potentially Essential, IPRs notified to ETSI in respect of ETSI standards"*, which is available from the ETSI Secretariat. Latest updates are available on the ETSI Web server (<http://www.etsi.org/ipr>).

Pursuant to the ETSI IPR Policy, no investigation, including IPR searches, has been carried out by ETSI. No guarantee can be given as to the existence of other IPRs not referenced in SR 000 314 (or the updates on the ETSI Web server) which are, or may be, or may become, essential to the present document.

Foreword

This Technical Specification (TS) has been produced by the ETSI 3rd Generation Partnership Project (3GPP).

The present document may refer to technical specifications or reports using their 3GPP identities or GSM identities. These should be interpreted as being references to the corresponding ETSI deliverables. The mapping of document identities is as follows:

For 3GPP documents:

3G TS | TR nn.nnn "<title>" (with or without the prefix 3G)

is equivalent to

ETSI TS | TR 1nn nnn "[Digital cellular telecommunications system (Phase 2+) (GSM);] Universal Mobile Telecommunications System; <title>

For GSM document identities of type "GSM xx.yy", e.g. GSM 01.04, the corresponding ETSI document identity may be found in the Cross Reference List on www.etsi.org/key

Contents

Foreword	6
1 Scope.....	7
2 References.....	7
2.1 Normative references.....	7
2.2 Informative references	8
3 Definitions, symbols and abbreviations	8
3.1 Definitions	8
3.2 Symbols	9
3.3 Abbreviations.....	9
4 Overview of the security architecture	11
5 Security features	12
5.1 Network access security.....	12
5.1.1 User identity confidentiality.....	12
5.1.2 Entity authentication	13
5.1.3 Confidentiality.....	13
5.1.4 Data integrity.....	14
5.1.5 Mobile equipment identification	14
5.2 Network domain security.....	14
5.2.1 Entity authentication	14
5.2.2 Data confidentiality.....	14
5.2.3 Data integrity.....	15
5.2.4 Fraud information gathering system.....	15
5.3 User domain security	15
5.3.1 User-to-USIM authentication.....	15
5.3.2 USIM-Terminal Link	15
5.4 Application security.....	16
5.4.1 Secure messaging between the USIM and the network	16
5.4.2 Network-wide user traffic confidentiality	16
5.4.3 Access to user profile data	16
5.4.4 IP security	16
5.5 Security visibility and configurability.....	17
5.5.1 Visibility.....	17
5.5.2 Configurability	17
6 Network access security mechanisms	17
6.1 Identification by temporary identities.....	17
6.1.1 General	17
6.1.2 TMUI reallocation procedure.....	17
6.1.3 Unacknowledged allocation of a temporary identity.....	18
6.1.4 Location update.....	18
6.2 Identification by a permanent identity	19
6.3 Authentication and key agreement.....	19
6.3.1 General	19
6.3.2 Distribution of authentication data from HE to SN.....	21
6.3.3 Authentication and key agreement	23
6.3.3.1 Cipher key selection	25
6.3.3.1.1 User plane	25
6.3.3.1.2 Control plane.....	25
6.3.4 Distribution of IMSI and temporary authentication data within one serving network domain	25
6.3.5 Re-synchronisation procedure.....	26
6.3.6 Reporting authentication failures from the SGSN/VLR to the HLR.....	27
6.3.7 Length of sequence numbers.....	28
6.4 Local authentication and connection establishment.....	28
6.4.1 Cipher key and integrity key setting.....	28

6.4.2	Cipher key and integrity mode negotiation	28
6.4.3	Cipher key and integrity key lifetime	28
6.4.4	Cipher key and integrity key identification	29
6.4.5	Security mode set-up procedure	29
6.4.6	Signalling procedures in the case of an unsuccessful integrity check	31
6.5	Access link data integrity	32
6.5.1	General	32
6.5.2	Integrity algorithm	32
6.5.3	UIA identification	33
6.6	Access link data confidentiality	33
6.6.1	General	33
6.6.2	Ciphering algorithm	33
6.6.3	UEA identification	33
6.6.4	Synchronisation of ciphering	34
6.6.4.1	Layer for ciphering	34
6.6.4.2	Intra-system handover	34
6.7	Network-wide encryption	34
6.7.1	Introduction	34
6.7.2	Ciphering method	35
6.7.3	Key management	36
6.7.3.1	General case	36
6.7.3.2	Outline scheme for intra-serving network case	36
6.7.3.3	Variant on the outline scheme	37
6.8	Interoperation and handover between UMTS and GSM	37
6.8.1	Authentication and key agreement of UMTS subscribers	37
6.8.1.1	General	37
6.8.1.2	R99+ HLR/AuC	38
6.8.1.3	R99+ MSC/VLR or SGSN	39
6.8.1.4	R99+ UE	39
6.8.1.5	USIM	40
6.8.2	Authentication and key agreement for GSM subscribers	40
6.8.2.1	General	40
6.8.2.2	R99+ MSC/VLR or SGSN	41
6.8.2.3	R99+ UE	42
6.8.3	Intersystem handover for CS Services – from UTRAN to GSM BSS	42
6.8.3.1	UMTS security context	42
6.8.3.2	GSM security context	42
6.8.4	Intersystem handover for CS Services – from GSM BSS to UTRAN	42
6.8.4.1	UMTS security context	42
6.8.4.2	GSM security context	43
6.8.5	Intersystem change for PS Services – from UTRAN to GSM BSS	43
6.8.5.1	UMTS security context	43
6.8.5.2	GSM security context	43
6.8.6	Intersystem change for PS services – from GSM BSS to UTRAN	43
6.8.6.1	UMTS security context	43
6.8.6.2	GSM security context	44
7	Network domain security mechanisms	44
7.1	Overview of Mechanism	44
7.1.1	Layer I	44
7.1.2	Layer II	45
7.1.3	Layer III	45
7.1.4	General Overview	45
7.2	Layer I Message Format	45
7.2.1	Properties and Tasks of Key Administration Centres	46
7.2.2	Transport of Session Keys	46
7.3	Layer II Message Format	47
7.4	Layer III Message Format	47
7.4.1	General Structure of Layer III Messages	47
7.4.2	Format of Layer III Message Body	48
7.4.2.1	Protection Mode 0	48
7.4.2.2	Protection Mode 1	48

7.4.2.3	Protection Mode 2	48
7.5	Mapping of MAP Messages and Modes of Protection	49
8	Application security mechanisms	49
8.1	Secure messaging between the USIM and the network	49
8.2	Void	49
8.3	Mobile IP security.....	49
Annex A (informative):	Requirements analysis	50
Annex B (informative):	Enhanced user identity confidentiality.....	51
Annex C (informative):	Management of sequence numbers.....	52
C.1	Generation of sequence numbers in the Authentication Centre.....	52
C.2	Handling of sequence numbers in the USIM.....	53
C.2.1	Protection against wrap around of counter in the USIM.....	53
C.2.2	Acceptance rule	53
C.2.3	List update	53
C.2.4	Notes.....	53
Annex D:	Void.....	55
Annex E (informative):	A Proposal for Layer II Message Format	56
E.1	Introduction.....	56
E.2	Proposed Layer II Message Format	56
E.2.1	Sending a session key for decryption.....	56
E.2.2	Sending a session key for encryption.....	57
Annex F (informative):	Example uses of AMF	58
F.1	Support multiple authentication algorithms and keys.....	58
F.2	Changing list parameters	58
F.3	Setting threshold values to restrict the lifetime of cipher and integrity keys.....	58
Annex G (informative):	Change history	59

Foreword

This Technical Specification has been produced by the 3GPP.

The contents of the present document are subject to continuing work within the TSG and may change following formal TSG approval. Should the TSG modify the contents of this TS, it will be re-released by the TSG with an identifying change of release date and an increase in version number as follows:

Version 3.y.z

where:

- 3 the first digit:
 - 3 Indicates TSG approved document under change control.
- y the second digit is incremented for all changes of substance, i.e. technical enhancements, corrections, updates, etc.
- z the third digit is incremented when editorial only changes have been incorporated in the specification.

1 Scope

This specification defines the security architecture, i.e., the security features and the security mechanisms, for the third generation mobile telecommunication system.

A security feature is a service capabilities that meets one or several security requirements. The complete set of security features address the security requirements as they are defined in "3G Security: Threats and Requirements" (21.133 [1]). A security mechanism is an element that is used to realise a security feature. All security features and security requirements taken together form the security architecture.

An example of a security feature is user data confidentiality. A security mechanism that may be used to implement that feature is a stream cipher using a derived cipher key.

2 References

The following documents contain provisions which, through reference in this text, constitute provisions of the present document.

- References are either specific (identified by date of publication, edition number, version number, etc.) or non-specific.
- For a specific reference, subsequent revisions do not apply.
- For a non-specific reference, the latest version applies.

2.1 Normative references

- [1] 3G TS 21.133: "3rd Generation Partnership Project (3GPP); Technical Specification Group (TSG) SA; 3G Security; Security Threats and Requirements".
- [2] 3G TS 33.120: "3rd Generation Partnership Project (3GPP); Technical Specification Group (TSG) SA; 3G Security; Security Principles and Objectives".
- [3] UMTS 33.21, version 2.0.0: "Security requirements".
- [4] UMTS 33.22, version 1.0.0: "Security features".
- [5] UMTS 33.23, version 0.2.0: "Security architecture".
- [6] Proposed UMTS Authentication Mechanism based on a Temporary Authentication Key.
- [7] TTC Work Items for IMT-2000 – System Aspects.
- [8] Annex 8 of "Requirements and Objectives for 3G Mobile Services and systems" – "Security Design Principles".
- [9] ETSI GSM 09.02 Version 4.18.0: Mobile Application Part (MAP) Specification.
- [10] ISO/IEC 11770-3: *Key Management – Mechanisms using Asymmetric Techniques*.
- [11] ETSI SAGE: Specification of the BEANO encryption algorithm, Dec. 1995 (confidential).
- [12] ETSI SMG10 WPB: SS7 Signalling Protocols Threat Analysis , Input Document AP 99-28 to SMG10 Meeting#28, Stockholm, Sweden.
- [13] 3G TS 33.105: "3rd Generation Partnership Project (3GPP); Technical Specification Group (TSG) SA; 3G Security; Cryptographic Algorithm Requirements".

2.2 Informative references

GSM documents:

- [14] GSM 02.09 version 5.1.1: "Security Aspects".
- [15] GSM 02.22 version 6.0.0: "Personalisation of GSM Mobile Equipment (ME); Mobile functionality specification".
- [16] GSM 02.48, version 6.0.0: "Security Mechanisms for the SIM Application Toolkit; Stage 1".
- [17] GSM 02.60, version 7.0.0: "GPRS; Service Description; Stage 1".
- [18] GSM 03.20, version 6.0.1: "Security related network functions".
- [19] GSM 03.48, version 6.1.0: "Security Mechanisms for the SIM application toolkit; Stage 2".
- [20] GSM 03.60, version 7.0.0: "GPRS; Service Description; Stage 2".
- [21] GSM 11.11, version 7.1.0: "Specification of SIM-terminal interface".
- [22] GSM 11.14, version 7.1.0: "Specification of SIM Application Toolkit for SIM-terminal interface".

UMTS documents:

- [23] UMTS 21.11, version 0.4.0: "IC-card aspects".
- [24] UMTS 23.01, version 1.0.0: "UMTS Network architecture".
- [25] UMTS 23.20, version 1.4.0: "Evolution of the GSM platform towards UMTS".

3 Definitions, symbols and abbreviations

3.1 Definitions

For the purposes of the present document, the following definitions apply:

Confidentiality: The property that information is not made available or disclosed to unauthorised individuals, entities or processes.

Data integrity: The property that data has not been altered in an unauthorised manner.

Data origin authentication: The corroboration that the source of data received is as claimed.

Entity authentication: The provision of assurance of the claimed identity of an entity.

Key freshness: A key is fresh if it can be guaranteed to be new, as opposed to an old key being reused through actions of either an adversary or authorised party.

USIM – User Services Identity Module. In a security context, this module is responsible for performing UMTS subscriber and network authentication and key agreement. It should also be capable of performing GSM authentication and key agreement to enable the subscriber to roam easily into a GSM Radio Access Network.

SIM – GSM Subscriber Identity Module. In a security context, this module is responsible for performing GSM subscriber authentication and key agreement. This module is **not** capable of handling UMTS authentication nor storing UMTS style keys.

UMTS Entity authentication and key agreement: Entity authentication according to this specification.

GSM Entity authentication and key agreement: Entity authentication according to TS ETSI GSM 03.20

User access module: either a USIM or a SIM

Mobile station, user: the combination of user equipment and a user access module.

UMTS subscriber: a mobile station that consists of user equipment with a USIM inserted.

GSM subscriber: a mobile station that consists of user equipment with a SIM inserted.

UMTS security context: a state that is established between a user and a serving network domain as a result of the execution of UMTS AKA. At both ends "UMTS security context data" is stored, that consists at least of the UMTS cipher/integrity keys CK and IK and the key set identifier KSI.

GSM security context: a state that is established between a user and a serving network domain usually as a result of the execution of GSM AKA. At both ends "GSM security context data" is stored, that consists at least of the GSM cipher key Kc and the cipher key sequence number CKSN.

Quintet, UMTS authentication vector: temporary authentication data that enables an MSC/VLR or SGSN to engage in UMTS AKA with a particular user. A quintet consists of five elements: a) a network challenge RAND, b) an expected user response XRES, c) a cipher key CK, d) an integrity key IK and e) a network authentication token AUTN.

Triplet, GSM authentication vector: temporary authentication data that enables an MSC/VLR or SGSN to engage in GSM AKA with a particular user. A triplet consists of three elements: a) a network challenge RAND, b) an expected user response SRES and c) a cipher key Kc.

Authentication vector: either a quintet or a triplet.

Temporary authentication data: either UMTS or GSM security context data or UMTS or GSM authentication vectors.

3.2 Symbols

For the purposes of the present document, the following symbols apply:

	Concatenation
⊕	Exclusive or
f1	Message authentication function used to compute MAC
f2	Message authentication function used to compute RES and XRES
f3	Key generating function used to compute CK
f4	Key generating function used to compute IK
f5	Key generating function used to compute AK
f6	Encryption function used to encrypt the IMUI
f7	Decryption function used to decrypt the IMUI ($=f6^{-1}$)
K	Long-term secret key shared between the USIM and the AuC

3.3 Abbreviations

For the purposes of the present document, the following abbreviations apply:

AK	Anonymity Key
AKA	Authentication and key agreement
AMF	Authentication management field
AUTN	Authentication Token
AV	Authentication Vector
CK	Cipher Key
CKSN	Cipher key sequence number
CS	Circuit Switched
$D_{SK(X)}(data)$	Decryption of "data" with Secret Key of X used for signing
$E_{K_{SXY(i)}}(data)$	Encryption of "data" with Symmetric Session Key #i for sending data from X to Y
$E_{PK(X)}(data)$	Encryption of "data" with Public Key of X used for encryption
Hash(data)	The result of applying a collision-resistant one-way hash-function to "data"
HE	Home Environment
HLR	Home Location Register
IK	Integrity Key
IMSI	International Mobile Subscriber Identity

IV	Initialisation Vector
KAC _X	Key Administration Centre of Network X
KS _{XY(i)}	Symmetric Session Key #i for sending data from X to Y
KSI	Key Set Identifier
KSS	Key Stream Segment
LAI	Location Area Identity
MAP	Mobile Application Part
MAC	Message Authentication Code
MAC-A	The message authentication code included in AUTN, computed using f1
MS	Mobile Station
MSC	Mobile Services Switching Centre
MT	Mobile Termination
NE _X	Network Element of Network X
PS	Packet Switched
P-TMSI	Packet-TMSI
Q	Quintet, UMTS authentication vector
RAI	Routing Area Identifier
RAND	Random challenge
RND _X	Unpredictable Random Value generated by X
SN	Sequence number
SN _{UIC}	Sequence number user for enhanced user identity confidentiality
SN _{HE}	Sequence number counter maintained in the HLR/AuC
SN _{MS}	Sequence number counter maintained in the USIM
SGSN	Serving GPRS Support Node
SIM	(GSM) Subscriber Identity Module
SN	Serving Network
T	Triplet, GSM authentication vector
TE	Terminal Equipment
Text1	Optional Data Field
Text2	Optional Data Field
Text3	Public Key algorithm identifier and Public Key Version Number (eventually included in Public Key Certificate)
TMSI	Temporary Mobile Subscriber Identity
TTP	Trusted Third Party
UE	User equipment
UEA	UMTS Encryption Algorithm
UIA	UMTS Integrity Algorithm
USIM	User Services Identity Module
VLR	Visitor Location Register
X	Network Identifier
XRES	Expected Response
Y	Network Identifier

4 Overview of the security architecture

Figure 1 gives an overview of the complete 3G security architecture.

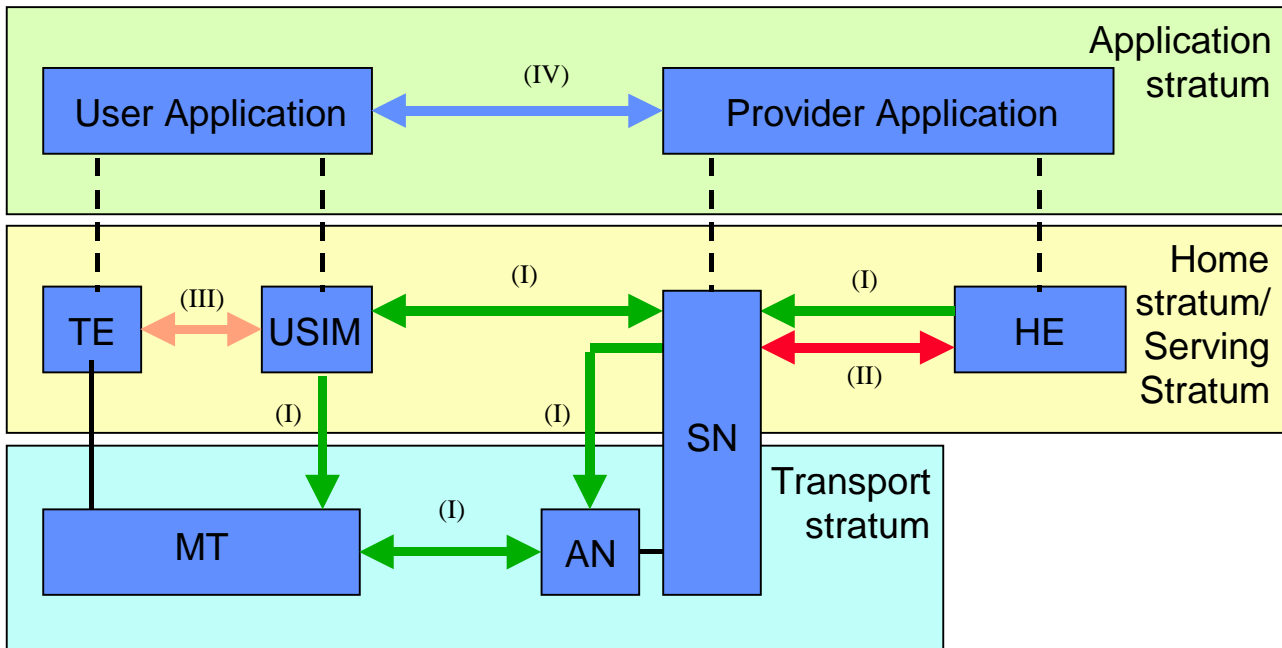


Figure 1: Overview of the security architecture

Five security feature groups are defined. Each of these feature groups meets certain threats, accomplishes certain security objectives:

- **Network access security (I):** the set of security features that provide users with secure access to 3G services, and which in particular protect against attacks on the (radio) access link;
- **Network domain security (II):** the set of security features that enable nodes in the provider domain to securely exchange signalling data, and protect against attacks on the wireline network;
- **User domain security (III):** the set of security features that secure access to mobile stations
- **Application domain security (IV):** the set of security features that enable applications in the user and in the provider domain to securely exchange messages.
- **Visibility and configurability of security (V):** the set of features that enables the user to inform himself whether a security features is in operation or not and whether the use and provision of services should depend on the security feature.

Figure 2 gives an overview of the UE registration and connection principles within UMTS with a CS service domain and a PS service domain. As in GSM/GPRS, user (temporary) identification, authentication and key agreement will take place independently in each service domain. User plane traffic will be ciphered using the cipher key agreed for the corresponding service domain while control plane data will be ciphered and integrity protected using the cipher and integrity keys from either one of the service domains. In clause 6 the detailed procedures are defined and when not otherwise stated they are used in both service domains.

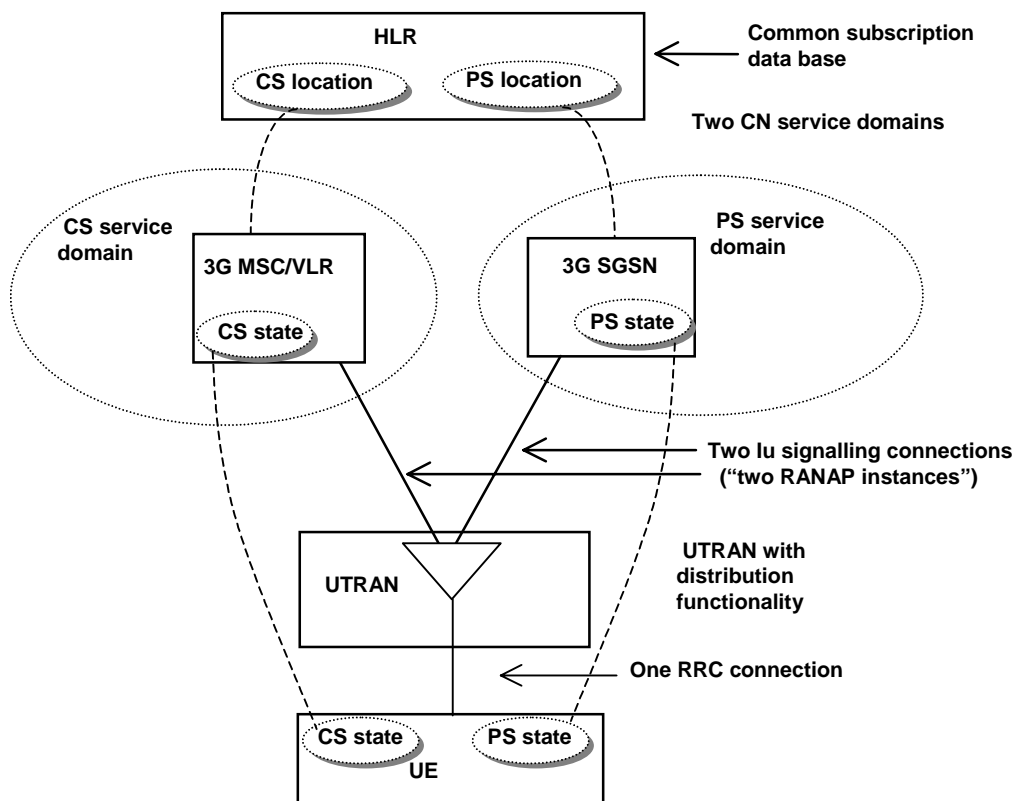


Figure 2: Overview of the UE registration and connection principles within UMTS for the separate CN architecture case when the CN consists of both a CS service domain with evolved MSC/VLR, 3G_MSC/VLR, as the main serving node and an PS service domain with evolved SGSN/GGSN, 3G_SGSN and 3G_GGSN, as the main serving nodes (Extract from TS 23.121 – Figure 4-8)

5 Security features

5.1 Network access security

5.1.1 User identity confidentiality

The following security features related to user identity confidentiality are provided:

- **user identity confidentiality:** the property that the permanent user identity (IMUI) of a user to whom a services is delivered cannot be eavesdropped on the radio access link;
- **user location confidentiality:** the property that the presence or the arrival of a user in a certain area cannot be determined by eavesdropping on the radio access link;
- **user untraceability:** the property that an intruder cannot deduce whether different services are delivered to the same user by eavesdropping on the radio access link.

To achieve these objectives, the user is normally identified by a temporary identity by which he is known by the visited serving network, or by an encrypted permanent identity. To avoid user traceability, which may lead to the compromise of user identity confidentiality, the user should not be identified for a long period by means of the same temporary or encrypted identity. To achieve these security features, in addition it is required that any signalling or user data that might reveal the user's identity is ciphered on the radio access link.

Clause 6.1 describes a mechanism that allows a user to be identified on the radio path by means of a temporary identity by which he is known in the visited serving network. This mechanism should normally be used to identify a user on the

radio path in location update requests, service requests, detach requests, connection re-establishment requests, etc..

Clause 6.2 describes a mechanism that allows a user to be identified on the radio path in case he is not known in the visited serving network by a temporary identity. It provides a transparent channel between the USIM and the user's HE that provides the user's HE with the option to implement a mechanism that allows identification by means of an encrypted permanent identity. The serving network then has to forward the encrypted permanent identity to the user's HE for decryption and receives the user's permanent identity from the user's HE. A possible mechanism that makes use of symmetric key encryption using group keys is included in Annex B. Alternatively, the user's HE environment has the option to let the user identify himself by means of its permanent identity in cleartext. Either of both mechanisms should be used to identify a user on the radio path, whenever the user is not known by a temporary identity in the serving network.

5.1.2 Entity authentication

The following security features related to entity authentication are provided:

- **authentication mechanism agreement:** the property that the user and the serving network can securely negotiate the mechanism for authentication and key agreement that they shall use subsequently;
- **user authentication:** the property that the serving network corroborates the user identity of the user;
- **network authentication:** the property that the user corroborates that he is connected to a serving network that is authorised by the user's HE to provide him services; this includes the guarantee that this authorisation is recent.

To achieve these objectives, it is assumed that entity authentication should occur at each connection set-up between the user and the network. Two mechanisms have been included: an authentication mechanism using an authentication vector delivered by the user's HE to the serving network, and a local authentication mechanism using the integrity key established between the user and serving network during the previous execution of the authentication and key establishment procedure.

Clause 6.3 describes an authentication and key establishment mechanism that achieves the security features listed above and in addition establishes a secret cipher key (see 5.1.3) and integrity key (see 5.1.4) between the user and the serving network. This mechanism should be invoked by the serving network after a first registration of a user in a serving network and after a service request, location update request, attach request, detach request or connection re-establishment request, when the maximum number of local authentications using the derived integrity key have been conducted.

Clause 6.5 describes the local authentication mechanism. The local authentication mechanism achieves the security features user authentication and network authentication and uses an integrity key established between user and serving network during the previous execution of the authentication and key establishment procedure. This mechanism should be invoked by the serving network after a service request, location update request, attach request, detach request or connection re-establishment request, provided that the maximum number of local authentications using the same derived integrity key has not been reached yet.

5.1.3 Confidentiality

The following security features are provided with respect to confidentiality of data on the network access link:

- **cipher algorithm agreement:** the property that the MS and the SN can securely negotiate the algorithm that they shall use subsequently;
- **cipher key agreement:** the property that the MS and the SN agree on a cipher key that they may use subsequently;
- **confidentiality of user data:** the property that user data cannot be overheard on the radio access interface;
- **confidentiality of signalling data:** the property that signalling data cannot be overheard on the radio access interface;

Cipher key agreement is realised in the course of the execution of the mechanism for authentication and key agreement (see 6.3). Cipher algorithm agreement is realised by means of a mechanism for security mode negotiation between the user and the network (see 6.6.9). This mechanism also enables the selected ciphering algorithm and the agreed cipher key to be applied in the way described in 6.6.

5.1.4 Data integrity

The following security features are provided with respect to integrity of data on the network access link:

- **integrity algorithm agreement:** the property that the MS and the SN can securely negotiate the integrity algorithm that they shall use subsequently;
- **integrity key agreement:** the property that the MS and the SN agree on an integrity key that they may use subsequently;
- **data integrity and origin authentication of signalling data:** the property that the receiving entity (MS or SN) is able to verify that signalling data has not been modified in an unauthorised way since it was sent by the sending entity (SN or MS) and that the data origin of the signalling data received is indeed the one claimed;

Integrity key agreement is realised in the course of the execution of the mechanism for authentication and key agreement (see 6.3). Integrity algorithm agreement is realised by means of a mechanism for security mode negotiation between the user and the network (see 6.6.9). This mechanism also enables the selected integrity algorithm and the agreed integrity key to be applied in the way described in 6.4.

5.1.5 Mobile equipment identification

NOTE: In certain cases, SN may request the MS to send it the mobile equipment identity of the terminal. The mobile equipment identity shall only be sent after authentication of SN with exception of emergency calls. The IMEI should be securely stored in the terminal. However, the presentation of this identity to the network is not a security feature and the transmission of the IMEI is not protected. Although it is not a security feature, it should not be deleted from UMTS however, as it is useful for other purposes.

5.2 Network domain security

5.2.1 Entity authentication

The following features with respect to authentication of network elements are provided:

- **authentication mechanism agreement:** the property that two network entities can securely negotiate the mechanism for authentication that they shall use subsequently;
- **network element authentication:** the property that a network element corroborates the identity of another network element it wants to communicate with;

This feature ensures that no malicious operational or maintenance commands can be injected into a network domain by an intruder. It provides network elements, in particular network elements belonging to different network operators, with the possibility to corroborate each other's identities before exchanging data.

This goal may be achieved either by an explicit or implicit entity authentication mechanism, to be performed each time data are exchanged between two network entities. Implicit authentication is realised by exchanging encrypted messages only, so that only an entity in possession of a certain shared key can make use of the data. The shared keys may be distributed among the network elements of a single operator in a manner outlined in Annex D.

Explicit authentication mechanisms can be achieved by asymmetrically based protocols (e.g. by using digital signatures) or by symmetric (e.g. challenge-response) protocols. Again, for explicit symmetric authentication, the necessary keys may be distributed as proposed in Annex E.

5.2.2 Data confidentiality

The following security features are provided with respect to confidentiality of data exchanged between network elements:

- **cipher algorithm agreement:** the property that two network elements can securely negotiate the algorithm that they shall use subsequently;
- **cipher key agreement:** the property that two network elements agree on a cipher key that they may use

subsequently;

- **confidentiality of exchanged data:** the property that data exchanged between two network elements cannot be eavesdropped;

In case authentication data can be eavesdropped in the network domain, serious fraud problems will arise. Therefore, these features are needed to ensure the confidentiality of sensitive data, e.g. authentication or other subscriber data inside the network domain. The first two features may be realised in course of an authentication mechanism performed by the network elements; the agreed cipher key is then used for securing signalling and user data by means of the agreed cipher algorithm.

5.2.3 Data integrity

The following security features are provided with respect to integrity of data exchanged between two network elements:

- **integrity algorithm agreement:** the property that two network elements can securely negotiate the integrity algorithm that they shall use subsequently;
- **integrity key agreement:** the property that two network elements agree on an integrity key that they may use subsequently;
- **data integrity and data origin authentication of signalling data:** the property that the receiving network element is able to verify that signalling data has not been modified in an unauthorised way since it was sent by the sending element and that the data origin of the signalling data received is indeed the one claimed;

The feature data integrity of signalling data ensures that operation and maintenance commands or user data exchanged between two network elements cannot be modified by an intruder without being detected, while the third feature ensures that no malicious operational or maintenance commands can be injected into a network domain by an intruder

The first two features may be realised in course of an authentication mechanism performed by the network entities involved; the agreed integrity key is then used for securing integrity of the exchanged data by means of the agreed integrity algorithm.

5.2.4 Fraud information gathering system

NOTE: Some feature will be provided which will allow fraud information to be exchanged between 3GMS providers according to time constraints that yet have to be defined.

5.3 User domain security

5.3.1 User-to-USIM authentication

This feature provides the property that access to the USIM is restricted until the USIM has authenticated the user. Thereby, it is ensured that access to the USIM can be restricted to an authorised user or to a number of authorised users. To accomplish this feature, user and USIM must share a secret (e.g. a PIN) that is stored securely in the USIM. The user gets access to the USIM only if he/she proves knowledge of the secret.

This security feature is implemented by means of the mechanism described in [21].

5.3.2 USIM-Terminal Link

This feature ensures that access to a terminal or other user equipment can be restricted to an authorised USIM. To this end, the USIM and the terminal must share a secret that is stored securely in the USIM and the terminal. If a USIM fails to prove its knowledge of the secret, it will be denied access to the terminal.

This security feature is implemented by means of the mechanism described in [15].

5.4 Application security

5.4.1 Secure messaging between the USIM and the network

It is expected that 3GMS will provide the capability for operators or third party providers to create applications which are resident on the USIM (similar to SIM Application Toolkit in GSM). There exists a need to secure messages which are transferred over the 3GMS network to applications on the USIM, with the level of security chosen by the network operator or the application provider.

The following security features are provided with respect to protecting messages transferred to applications on the USIM over the 3GMS network:

- **Entity authentication of applications:** the property that two applications are able to corroborate each other's identity.
- **Data origin authentication of application data:** the property that the receiving application is able to verify the claimed data origin of the application data received;
- **Data integrity of application data:** the property that the receiving application is able to verify that application data has not been modified since it was sent by the sending application;
- **Replay detection of application data:** the property that an application is able to detect that the application data that it receives is replayed;
- **Sequence integrity of application data:** the property that an application is able to detect that the application data that it receives is received in sequence;
- **Proof of receipt:** the property that the sending application can proof that the receiving application has received the application data sent.
- **Confidentiality of application data:** the property that application data is not disclosed to unauthorised parties.

NOTE: It is assumed that these security features will be based on GSM SIM Application Toolkit security features. Further work is required to identify what enhancements need to be made to SIM Application Toolkit security. Possible areas of enhancement may include: key management support, enhancement of security mechanisms/features, increased flexibility in algorithm choice and security parameter size. A joint 3GPP TSG-SA 'Security'/3GPP TSG-T 'USIM' working group may be required to progress this issue.

5.4.2 Network-wide user traffic confidentiality

This feature provides users with the assurance that their traffic is protected against eavesdropping across the entire network, not just on the radio links in the access network.

5.4.3 Access to user profile data

[ffs]

5.4.4 IP security

[ffs]

5.5 Security visibility and configurability

5.5.1 Visibility

Although in general the security features should be transparent to the user, for certain events and according to the user's concern, greater user visibility of the operation of security features should be provided. This yields to a number of features that inform the user of security-related events, such as:

- indication of access network encryption: the property that the user is informed whether the confidentiality of user data is protected on the radio access link, in particular when non-ciphered calls are set-up;
- indication of network-wide encryption: the property that the user is informed whether the confidentiality of user data is protected along the entire communication path;
- indication of the level of security: the property that the user is informed on the level of security that is provided by the visited network, in particular when a user is handed over or roams into a network with lower security level (3G → 2G).

5.5.2 Configurability

Configurability is the property that that the user and the user's HE can configure whether the use or the provision of a service should depend on whether a security feature is in operation. A service can only be used if all security features, which are relevant to that service and which are required by the configurations of the user or of the user's HE, are in operation. The following configurability features are suggested:

- Enabling/disabling user-USIM authentication: the user and/or user's HE should be able to control the operation of user-USIM authentication, e.g., for some events, services or use.
- Accepting/Rejecting incoming non-ciphered calls: the user and/or user's HE should be able to control whether the user accepts or rejects incoming non-ciphered calls;
- Setting up or not setting-up non-ciphered calls: the user and/or user's HE should be able to control whether the user sets up connections when ciphering is not enabled by the network;
- Accepting/rejecting the use of certain ciphering algorithms: the user and/or user's HE should be able to control which ciphering algorithms are acceptable for use.

6 Network access security mechanisms

6.1 Identification by temporary identities

6.1.1 General

This mechanism allows the identification of a user on the radio access link by means of a temporary mobile user identity (TMUI). A TMUI has local significance only in the location area in which the user is registered. Outside that area it should be accompanied by an appropriate Location Area Identification (LAI) in order to avoid ambiguities. The association between the permanent and temporary user identities is kept by the Visited Location Register (VLR) in which the user is registered.

The TMUI, when available, is normally used to identify the user on the radio access path, for instance in paging requests, location update requests, attach requests, service requests, connection re-establishment requests and detach requests.

6.1.2 TMUI reallocation procedure

The purpose of the mechanism described in this subsection is to allocate a new TMUI/LAI pair to a user by which he may subsequently be identified on the radio access link.

The procedure should be performed after the initiation of ciphering. The ciphering of communication over the radio path is specified in clause 6.6. The allocation of a temporary identity is illustrated in Figure 3.

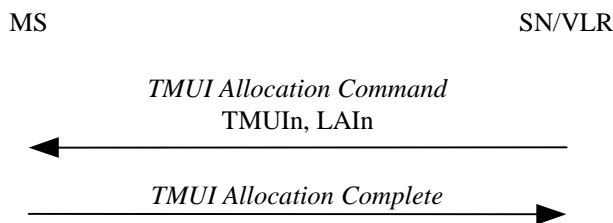


Figure 3: TMSI allocation

The allocation of a temporary identity is initiated by the VLR.

The VLR generates a new temporary identity (TMUI_n) and stores the association of TMUI_n and the permanent identity IMUI in its database. The TMUI should be unpredictable. The VLR then sends the TMUI_n and (if necessary) the new location area identity LAIn to the user.

Upon receipt the user stores TMUI_n and automatically removes the association with any previously allocated TMUI. The user sends an acknowledgement back to the VLR.

Upon receipt of the acknowledgement the VLR removes the association with the old temporary identity TMUI_o and the IMUI (if there was any) from its database.

6.1.3 Unacknowledged allocation of a temporary identity

If the serving network does not receive an acknowledgement of the successful allocation of a temporary identity from the user, the network shall maintain the association between the new temporary identity TMUI_n and the IMUI and between the old temporary identity TMUI_o (if there is any) and the IMUI.

For a user-originated transaction, the network shall allow the user to identify itself by either the old temporary identity TMUI_o or the new temporary identity TMUI_n. This allows the network to determine the temporary identity stored in the mobile station. The network shall subsequently delete the association between the other temporary identity and the IMUI, to allow the temporary identity to be allocated to another user.

For a network-originated transaction, the network shall identify the user by its permanent identity (IMUI). When radio contact has been established, the network shall instruct the user to delete any stored TMUI. When the network receives an acknowledgement from the user, the network shall delete the association between the IMUI and any TMUI to allow the released temporary identities to be allocated to other users.

Subsequently, in either of the cases above, the network may initiate the normal TMUI reallocation procedure.

Repeated failure of TMUI reallocation (passing a limit set by the operator) may be reported for O&M action.

6.1.4 Location update

In case a user identifies itself using a TMUI_o/LAIO pair that was assigned by the visited VLR_n the IMUI can normally be retrieved from the database. If this is not the case, the visited VLR_n should request the user to identify itself by means of its permanent user identity. This mechanism is described in 6.2.

In case a user identifies itself using a TMUI_o/LAIO pair that was not assigned by the visited VLR_n and the visited VLR_n and the previously visited VLR_o exchange authentication data, the visited VLR_n should request the previously visited VLR_o to send the permanent user identity. This mechanism is described in 6.3.4, it is integrated in the mechanism for distribution of authentication data between VLRs. If the previously visited VLR_o cannot be contacted or cannot retrieve the user identity, the visited VLR_n should request the user to identify itself by means of its permanent user identity. This mechanism is described in 6.2.

6.2 Identification by a permanent identity

The mechanism described in here allows the identification of a user on the radio path by means of the permanent user identity (IMUI).

The mechanism should be invoked by the serving network whenever the user cannot be identified by means of a temporary identity. In particular, it should be used when the user registers for the first time in a serving network, or when the serving network cannot retrieve the IMUI from the TMUI by which the user identifies itself on the radio path.

The mechanism is illustrated in Figure 4.

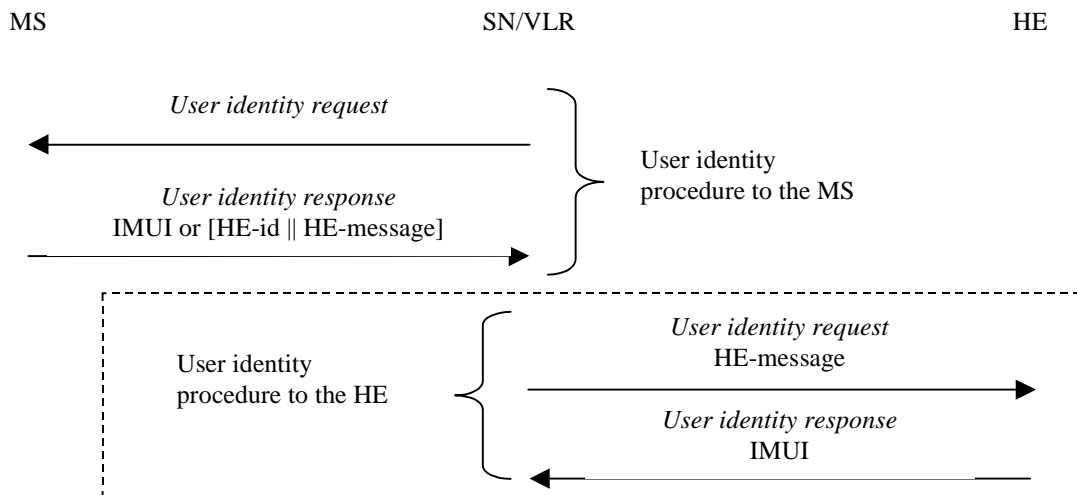


Figure 4: Identification by the permanent identity

The mechanism is initiated by the visited SN/VLR that requests the user to send its permanent identity. According to the user's preferences, his response may contain either 1) the IMUI in cleartext, or 2) the user's HE-identity in cleartext and an HE-message that contains an encrypted IMUI.

The term HE-id denotes an expression which is sufficient to route the user identity request message to an appropriate network element in the HE. Annex B contains a proposal to use MCC, MNC and the first three digits of the user's MSIN as routing information to address an HE/HLR.

In case the response contains the IMUI in cleartext, the procedure is ended successfully. This variant represents a breach in the provision of user identity confidentiality.

In case the response contains an encrypted IMUI, the visited SN/VLR forwards the HE message to the user's HE in a request to send the user's IMUI. The user's HE then derives the IMUI from the HE-message and sends the IMUI back to the SN/VLR. Annex B describes an example mechanism that makes use of group keys to encrypt the IMUI.

6.3 Authentication and key agreement

6.3.1 General

The mechanism described here achieves mutual authentication by the user and the network showing knowledge of a secret key K which is shared between and available only to the USIM and the AuC in the user's HE. In addition the USIM and the HE keep track of counters SEQ_{MS} and SEQ_{HE} respectively to support network authentication.

The method was chosen in such a way as to achieve maximum compatibility with the current GSM security architecture and facilitate migration from GSM to UMTS. The method is composed of a challenge/response protocol identical to the GSM subscriber authentication and key establishment protocol combined with a sequence number-based one-pass protocol for network authentication derived from the ISO standard ISO/IEC 9798-4 (section 5.1.1).

An overview of the mechanism is shown in Figure 5.

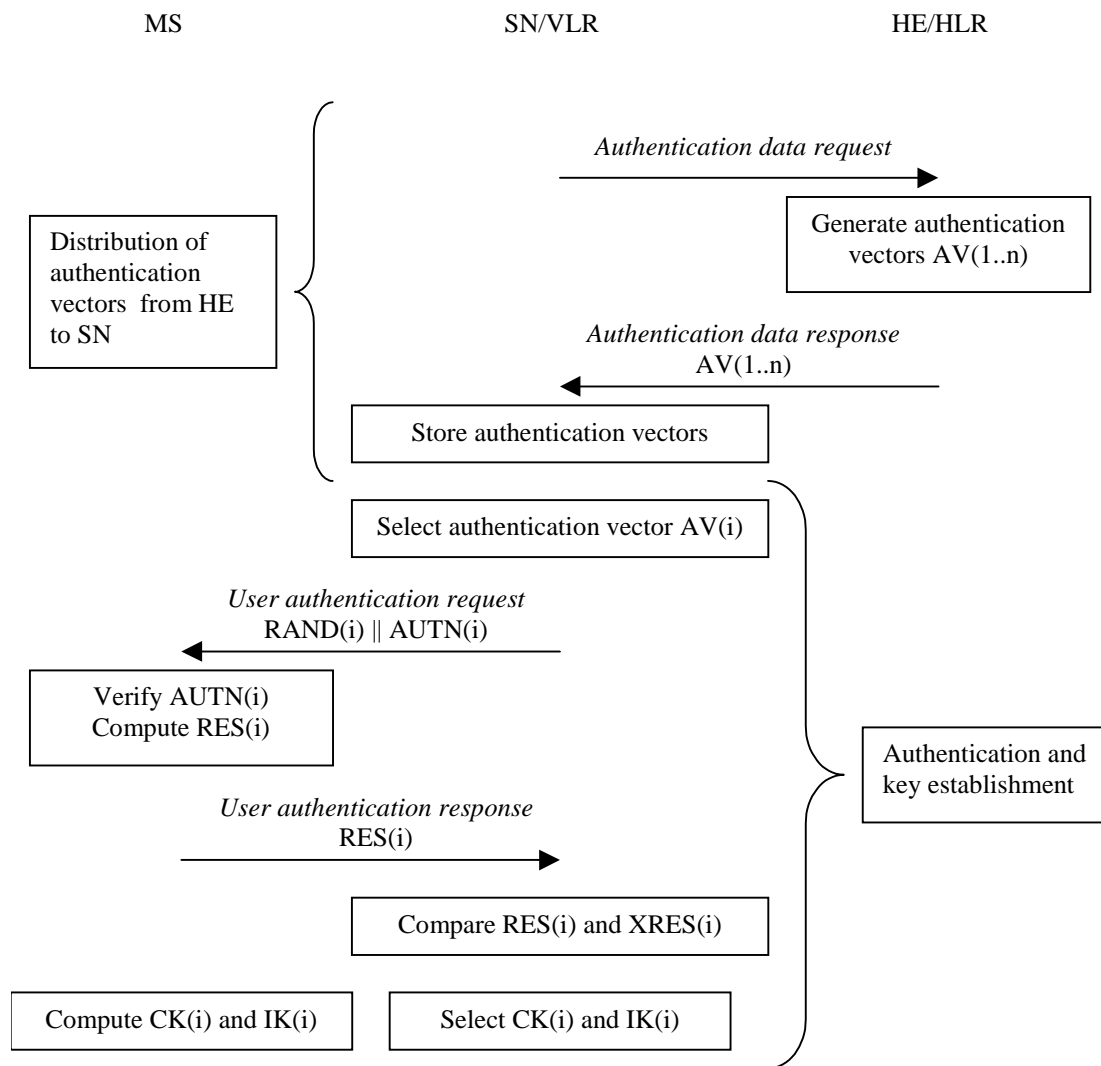


Figure 5: Authentication and key agreement

Upon receipt of a request from the VLR/SGSN, the HE/AuC sends an ordered array of n authentication vectors (the equivalent of a GSM "triplet") to the VLR/SGSN. Each authentication vector consists of the following components: a random number RAND, an expected response XRES, a cipher key CK, an integrity key IK and an authentication token AUTN. Each authentication vector is good for one authentication and key agreement between the VLR/SGSN and the USIM.

When the VLR/SGSN initiates an authentication and key agreement, it selects the next authentication vector from the array and sends the parameters RAND and AUTN to the user. The USIM checks whether AUTN can be accepted and, if so, produces a response RES which is sent back to the VLR/SGSN. The USIM also computes CK and IK. The VLR/SGSN compares the received RES with XRES. If they match the VLR/SGSN considers the authentication and key agreement exchange to be successfully completed. The established keys CK and IK will then be transferred by the USIM and the VLR/SGSN to the entities which perform ciphering and integrity functions.

VLR/SGSNs can offer secure service even when HE/AuC links are unavailable by allowing them to use previously derived cipher and integrity keys for a user so that a secure connection can still be set up without the need for an authentication and key agreement. Authentication is in that case based on a shared integrity key, by means of data integrity protection of signalling messages (see 6.4).

The authenticating parties shall be the AuC of the user's HE (HE/AuC) and the USIM in the user's mobile station. The mechanism consists of the following procedures:

A procedure to distribute authentication information from the HE/AuC to the VLR/SGSN. This procedure is described in 6.3.2. The VLR/SGSN is assumed to be trusted by the user's HE to handle authentication information securely. It is also assumed that the intra-system links between the VLR/SGSN to the HE/AuC are adequately secure. Mechanisms to secure these links are described in clause 7. It is further assumed that the user trusts the HE.

A procedure to mutually authenticate and establish new cipher and integrity keys between the VLR/SGSN and the MS. This procedure is described in 6.3.3.

A procedure to distribute authentication data from a previously visited VLR to the newly visited VLR. This procedure is described in 6.3.4. It is also assumed that the links between VLR/SGSNs are adequately secure. Mechanisms to secure these links are described in clause 7.

6.3.2 Distribution of authentication data from HE to SN

The purpose of this procedure is to provide the VLR/SGSN with an array of fresh authentication vectors from the user's HE to perform a number of user authentications.

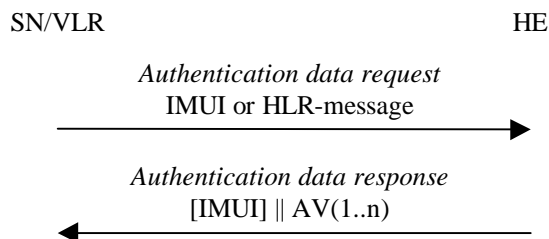


Figure 6: Distribution of authentication data from HE to VLR/SGSN

The VLR/SGSN invokes the procedures by requesting authentication vectors to the HE/AuC.

The *authentication data request* shall include a user identity. If the user is known in the VLR/SGSN by means of the IMUI, the *authentication data request* shall include the IMUI. However, if the user is identified by means of an encrypted permanent identity (see 6.2), the HLR-message from which the HE can derive the IMUI is included instead. In that case, this procedure and the procedure *user identity request to the HLR* are integrated.

Upon the receipt of the *authentication data request* from the VLR/SGSN, the HE may have pre-computed the required number of authentication vectors and retrieve them from the HLR database or may compute them on demand. The HE/AuC sends an authentication response back to the VLR/SGSN that contains an ordered array of n authentication vectors AV(1..n).

Figure 7 shows the generation of an authentication vector AV by the HE/AuC.

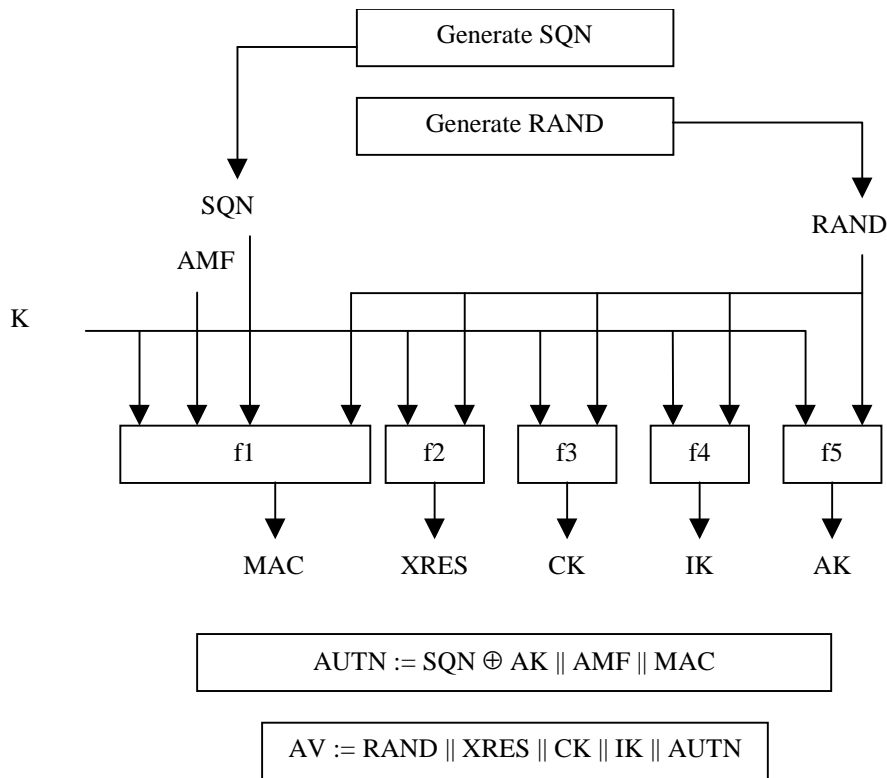


Figure 7: Generation of authentication vectors

The HE/AuC starts with generating a fresh sequence number SQN and an unpredictable challenge RAND.

For each user the HE/AuC keeps track of a counter: SQN_{HE}

The HE has some flexibility in the management of sequence numbers, but some requirements need to be fulfilled by the mechanism used:

- The generation mechanism shall allow a re-synchronisation procedure in the HE described in section 6.3.5
- The SQN should be generated in such way that it does not expose the identity and location of the user.
- In case the SQN may expose the identity and location of the user, the AK may be used as an anonymity key to conceal it.
- The generation mechanism shall allow protection against wrap around the counter in the USIM.
A method how to achieve this is given in informative Annex C.2.

The mechanisms for verifying the freshness of sequence numbers in the USIM shall to some extent allow the out-of-order use of sequence numbers. This is to ensure that the authentication failure rate due to synchronisation failures is sufficiently low. This requires the capability of the USIM to store information on past successful authentication events (e.g. sequence numbers or relevant parts thereof). The mechanism shall ensure that a sequence number can still be accepted if it is among the last $x = 50$ sequence numbers generated. This shall not preclude that a sequence number is rejected for other reasons such as a limit on the age for time-based sequence numbers.

The same minimum number x needs to be used across the systems to guarantee that the synchronisation failure rate is sufficiently low under various usage scenarios, in particular simultaneous registration in the CS- and the PS-service domains, user movement between VLRs/SGSNs which do not exchange authentication information, super-charged networks.

The use of SEQHE is specific to the method of generation sequence numbers. A method is specified in Annex C.1 how to generate a fresh sequence number. A method is specified in Annex C.2 how to verify the freshness of a sequence number.

An authentication and key management field AMF is included in the authentication token of each authentication vector. Example uses of this field are included in Annex F.

Subsequently the following values are computed:

- a message authentication code $MAC = f1_K(SQN \parallel RAND \parallel AMF)$ where $f1$ is a message authentication function;
- an expected response $XRES = f2_K(RAND)$ where $f2$ is a (possibly truncated) message authentication function;
- a cipher key $CK = f3_K(RAND)$ where $f3$ is a key generating function;
- an integrity key $IK = f4_K(RAND)$ where $f4$ is a key generating function;
- an anonymity key $AK = f5_K(RAND)$ where $f5$ is a key generating function or $f5 \equiv 0$.

Finally the authentication token $AUTN = SQN \oplus AK \parallel AMF \parallel MAC$ is constructed.

Here, AK is an anonymity key used to conceal the sequence number as the latter may expose the identity and location of the user. The concealment of the sequence number is to protect against passive attacks only. If no concealment is needed then $f5 \equiv 0$.

6.3.3 Authentication and key agreement

The purpose of this procedure is to authenticate the user and establish a new pair of cipher and integrity keys between the VLR/SGSN and the MS. During the authentication, the user verifies the freshness of the authentication vector that is used.

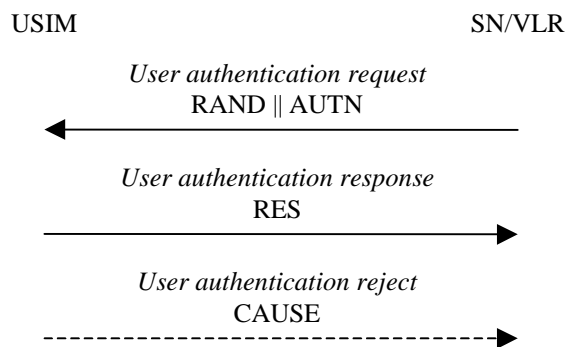


Figure 8: Authentication and key establishment

The VLR/SGSN invokes the procedure by selecting the next unused authentication vector from the ordered array of authentication vectors in the VLR database. The VLR/SGSN sends to the user the random challenge $RAND$ and an authentication token for network authentication $AUTN$ from the selected authentication vector.

Upon receipt the user proceeds as shown in Figure 9.

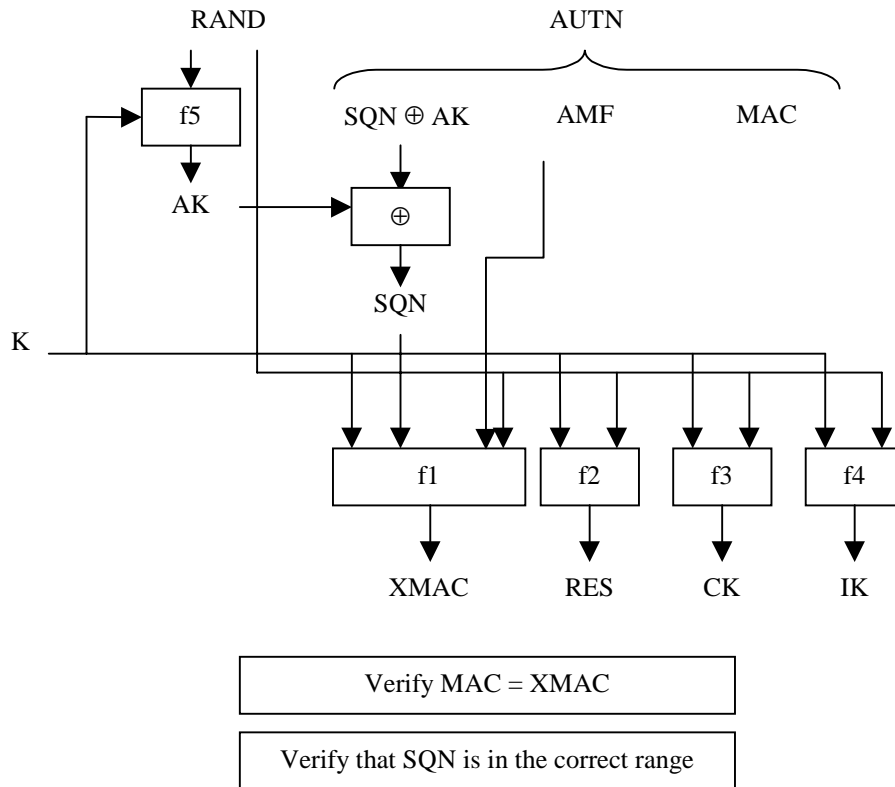


Figure 9: User authentication function in the USIM

Upon receipt of $RAND$ and $AUTN$ the user first computes the anonymity key $AK = f5_K(RAND)$ and retrieves the sequence number $SQN = (SQN \oplus AK) \oplus AK$.

Next the user computes $XMAC = f1_K(SQN \parallel RAND \parallel AMF)$ and compares this with MAC which is included in $AUTN$. If they are different, the user sends *user authentication reject* back to the VLR/SGSN with an indication of the cause and the user abandons the procedure.

Next the USIM verifies that the received sequence number SQN is in the correct range.

If the user considers the sequence number to be not in the correct range, he sends *synchronisation failure* back to the VLR/SGSN including an appropriate parameter, and abandons the procedure.

The synchronisation failure message contains the parameter $AUTS$. t is $AUTS = Conc(SQN_{MS}) \parallel MACS$. $Conc(SQN_{MS}) = SQN_{MS} \oplus f5_K(MACS)$ is the concealed value of the counter SEQ_{MS} in the MS, and $MACS = f1*_K(SEQ_{MS} \parallel RAND \parallel AMF)$ where $RAND$ is the random value received in the current user authentication request. $f1^*$ is a message authentication code (MAC) function with the property that no valuable information can be inferred from the function values of $f1^*$ about those of $f1, \dots, f5$ and vice versa.

The AMF used to calculate $MACS$ assumes a dummy value of all zeros so that it does not need to be transmitted in the clear in the re-synch message.

The construction of the parameter $AUTS$ is shown in the following Figure 10:

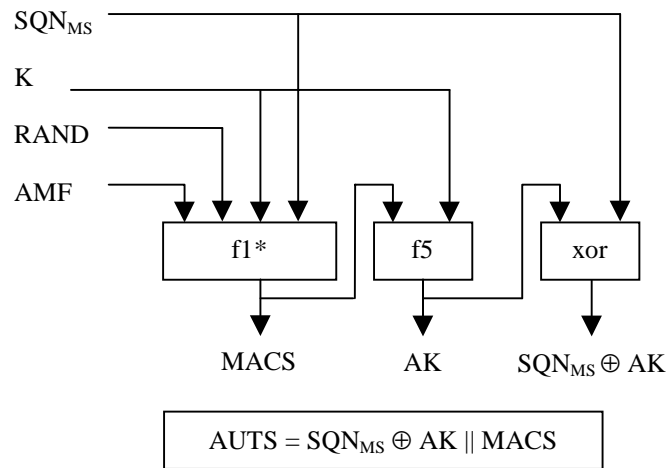


Figure 10: Construction of the parameter AUTS

If the sequence number is considered to be in the correct range however, the user computes $RES = f2_K(RAND)$ and includes this parameter in a *user authentication response* back to the VLR/SGSN. Finally the user computes the cipher key $CK = f3_K(RAND)$ and the integrity key $IK = f4_K(RAND)$. Note that if this is more efficient, RES , CK and IK could also be computed earlier at any time after receiving $RAND$. The MS stores $RAND$ for re-synchronisation purposes.

Upon receipt of *user authentication response* the VLR/SGSN compares RES with the expected response $XRES$ from the selected authentication vector. If $XRES$ equals RES then the authentication of the user has passed. The VLR/SGSN also selects the appropriate cipher key CK and integrity key IK from the selected authentication vector.

6.3.3.1 Cipher key selection

Because of the separate mobility management for CS and PS services, the USIM establishes cipher keys with both the CS and the PS core network service domains. The conditions on the use of these cipher keys in the user and control planes are given below.

6.3.3.1.1 User plane

The CS user data connections are ciphered with the cipher key CK_{CS} established between the user and the 3G CS core network service domain and identified in the security mode setting procedure. The PS user data connections are ciphered with the cipher key CK_{PS} established between the user and the 3G PS core network service domain and identified in the security mode setting procedure.

6.3.3.1.2 Control plane

When a security mode setting procedure is performed, the cipher/integrity key set by this procedure is applied to the signalling plane, whatever core network service domain is specified in the procedure. This may require that the cipher/integrity key of an (already ciphered/integrity protected) ongoing signalling connection is changed. This change should be completed within five seconds.

6.3.4 Distribution of IMSI and temporary authentication data within one serving network domain

The purpose of this procedure is to provide a newly visited MSC/VLR or SGSN with temporary authentication data from a previously visited MSC/VLR or SGSN within the same serving network domain.

The procedure is shown in Figure 11.

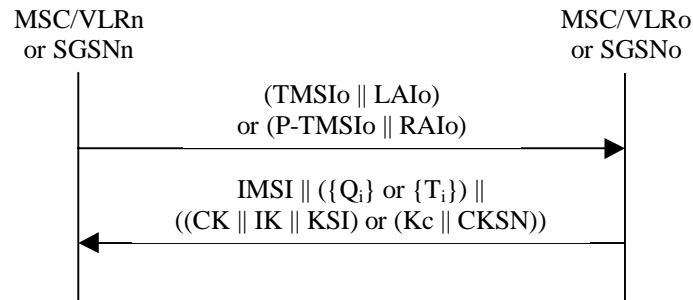


Figure 11: Distribution of IMSI and temporary authentication data within one serving network domain

The procedure shall be invoked by the newly visited MSC/VLRn (resp. SGSNn) after the receipt of a location update request (resp. routing area update request) from the user wherein the user is identified by means of a temporary user identity TMSIo (resp. P-TMSIo) and the location area identity LAIo (resp. routing area identity RAIo) under the jurisdiction of a previously visited MSC/VLRo or SGSNo that belongs to the same serving network domain as the newly visited MSC/VLRn or SGSNn.

The protocol steps are as follows:

- a) The MSC/VLRn (resp. SGSNn) sends a *user identity request* to the MSC/VLRo (or SGSNo), this message contains TMSIo and LAIo (resp. P-TMSIo and RAIo).
- b) The MSC/VLRo (resp. SGSNo) searches the user data in the database.

If the user is found, the MSC/VLRo (resp. SGSNo) shall send a *user identity response* back that

- i) shall include the IMSI,
- ii) may include a number of unused authentication vectors (quintets or triplets) and
- iii) may include the current security context data: CK, IK and KSI (UMTS) or Kc and CKSN (GSM).

The MSC/VLRo or SGSNo subsequently deletes the authentication vectors which have been sent and the data elements on the current security context.

If the user cannot be identified the MSC/VLRo or SGSNo shall send a *user identity response* indicating that the user identity cannot be retrieved.

- c) If the MSC/VLRn or SGSNn receives a *user identity response* with an IMSI, it creates an entry and stores any authentication vectors and any data on the current security context that may be included.

If the MSC/VLRn or SGSNn receives a *user identity response* indicating that the user could not be identified, it shall initiate the user identification procedure described in 6.2.

6.3.5 Re-synchronisation procedure

A VLR/SGSN may send two types of *authentication data requests* to the HE/AuC, the (regular) one described in subsection 6.3.2 and one used in case of synchronisation failures, described in this subsection.

Upon receiving a *synchronisation failure* message from the user, the VLR/SGSN sends an *authentication data request* with a "*synchronisation failure indication*" to the HE/AuC, together with the parameters

- RAND sent to the MS in the preceding user authentication request and
- $RAND_{MS} || AUTS$ received by the VLR/SGSN in the response to that request, as described in subsection 6.3.3.

An VLR/SGSN will not react to unsolicited "*synchronisation failure indication*" messages from the MS.

The VLR/SGSN does not send new user authentication requests to the user before having received the response to its authentication data request from the HE/AuC (or before it is timed out).

When the HE/AuC receives an *authentication data request* with a "*synchronisation failure indication*" it acts as follows:

1. The HE/AuC retrieves SEQ_{MS} from $\text{Conc}(SEQ_{MS})$ by computing $f5_K(MACS)$.
2. The HE/AuC checks if SEQ_{HE} is in the correct range, i.e. if the next sequence number generated SEQ_{HE} using would be accepted by the USIM.
3. If SEQ_{HE} is in the correct range then the HE/AuC continues with step (6), otherwise it continues with step (4).
4. The HE/AuC verifies $AUTS$ (cf. subsection 6.3.3.).
5. If the verification is successful the HE/AuC resets the value of the counter SEQ_{HE} to SEQ_{MS} .
6. The HE/AuC sends an *authentication data response* with a new batch of authentication vectors to the VLR/SGSN. If the counter SEQ_{HE} was not reset then these authentication vectors can be taken from storage, otherwise they are newly generated after resetting SEQ_{HE} . In order to reduce the real-time computation burden on the HE/AuC, the HE/AuC may also send only a single authentication vector in the latter case.

Whenever the VLR/SGSN receives a new batch of authentication vectors from the HE/AuC in an authentication data response it deletes the old ones for that user in the VLR.

The user may now be authenticated based on a new authentication vector from the HE/AuC. Figure 12 shows how re-synchronisation is achieved by combining a *user authentication request* answered by a *synchronisation failure* message (as described in subclause 6.3.3) with an *authentication data request* with *synchronisation failure* indication answered by an *authentication data response* (as described in this subclause).

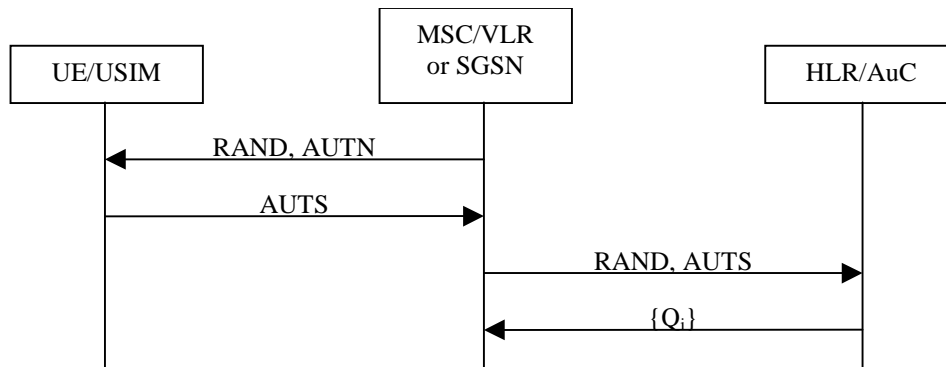


Figure 12: Resynchronisation mechanism

6.3.6 Reporting authentication failures from the SGSN/VLR to the HLR

The purpose of this procedure is to provide a mechanism for reporting authentication failures from the serving environment back to the home environment.

The procedure is shown in Figure 13.

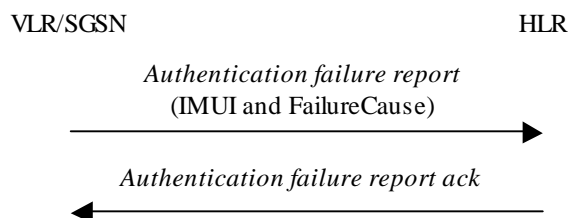


Figure 13: Reporting authentication failure from VLR/SGSN to HLR

The procedure is invoked by the serving network VLR/SGSN when the authentication procedure fails. The *authentication failure report* shall contain the subscriber identity and a failure cause code. The possible failure causes are either that the network signature was wrong or that the user response was wrong.

When the home environment receives the *authentication failure report* it shall respond by an acknowledge back to the serving network. The HE may decide to cancel the location of the user after receiving an *authentication failure report*.

6.3.7 Length of sequence numbers

Sequence numbers shall have a length of 6 octets.

6.4 Local authentication and connection establishment

6.4.1 Cipher key and integrity key setting

Mutual key setting is the procedure that allows the MS and the RNC to agree on the key IK used to compute message authentication codes using algorithm UIA. Authentication and key setting is triggered by the authentication procedure and described in 6.3. Authentication and key setting may be initiated by the network as often as the network operator wishes. Key setting can occur as soon as the identity of the mobile subscriber (i.e. TMUI or IMUI) is known by the SN/VLR. The key IK is stored in the SN/VLR and transferred to the RNC when it is needed. The key IK is stored in the USIM until it is updated at the next authentication.

If an authentication procedure is performed during a data transfer in the PS mode, the new cipher key CK and integrity key IK shall be taken in use in both the RNC and the UE as part of the security mode negotiation (see 6.4.5) that follows the authentication procedure.

6.4.2 Cipher key and integrity mode negotiation

When an MS wishes to establish a connection with the network, the MS shall indicate to the network in the MS/USIM Classmark which cipher and integrity algorithms the MS supports. This message itself must be integrity protected. As it is the case that the RNC does not have the integrity key IK when receiving the MS/USIM Classmark the cipher and integrity must be stored in the RNC and the integrity of the classmark with the newly generated IK and this value is transmitted to the RNC after the authentication procedure is complete.

The network shall compare its integrity protection capabilities and preferences, and any special requirements of the subscription of the MS, with those indicated by the MS and act according to the following rules:

- 1) If the MS and the SN have no versions of the UIA algorithm in common, then the connection shall be released.
- 2) If the MS and the SN have at least one version of the UIA algorithm in common, then the network shall select one of the mutually acceptable versions of the UIA algorithm for use on that connection.

The network shall compare its ciphering capabilities and preferences, and any special requirements of the subscription of the MS, with those indicated by the MS and act according to the following rules:

- 1) If the MS and the network have no versions of the UEA algorithm in common and the network is not prepared to use an unciphered connection, then the connection shall be released.
- 2) If the MS and the network have at least one version of the UEA algorithm in common, then the network shall select one of the mutually acceptable versions of the UEA algorithm for use on that connection.
- 3) If the MS and the network have no versions of the UEA algorithm in common and the user (respectively the user's HE) and the SN are willing to use an unciphered connection, then an unciphered connection shall be used.

6.4.3 Cipher key and integrity key lifetime

Authentication and key agreement which generates cipher/integrity keys is not mandatory at call set-up, and there is therefore the possibility of unlimited and malicious re-use of compromised keys. A mechanism is needed to ensure that a particular cipher/integrity key set is not used for an unlimited period of time, to avoid attacks using compromised keys. The USIM shall therefore contain a mechanism to limit the amount of data that is protected by an access link key set.

Each time an RRC connection is released the highest value of the hyperframe number (the current value of COUNT) of the bearers that were protected in that RRC connection is stored in the USIM. When the next RRC connection is established that value is read from the USIM and incremented by one.

The USIM shall trigger the generation of a new access link key set (a cipher key and an integrity key) if the counter reaches a maximum value set by the operator and stored in the USIM at the next RRC connection request message sent out.

This mechanism will ensure that a cipher/integrity key set cannot be reused more times than the limit set by the operator.

6.4.4 Cipher key and integrity key identification

The key set identifier (KSI) is a number which is associated with the cipher and integrity keys derived during authentication. The key set identifier is allocated by the network and sent with the authentication request message to the mobile station where it is stored together with the calculated cipher key CK and integrity key IK.

The purpose of the key set identifier is to make it possible for the network to identify the cipher key CK and integrity key IK which is stored in the mobile station without invoking the authentication procedure. This is used to allow re-use of the cipher key CK and integrity key IK during subsequent connection set-ups.

The key set identifier is three bits. Seven values are used to identify the key set. A value of "111" is used by the mobile station to indicate that a valid key is not available for use. The value '111' in the other direction from network to mobile station is reserved.

6.4.5 Security mode set-up procedure

This section describes one common procedure for both ciphering and integrity protection set-up. This procedure is mandatory. The message sequence flow below describes the information transfer at initial connection establishment, possible authentication and start of integrity protection and possible ciphering.

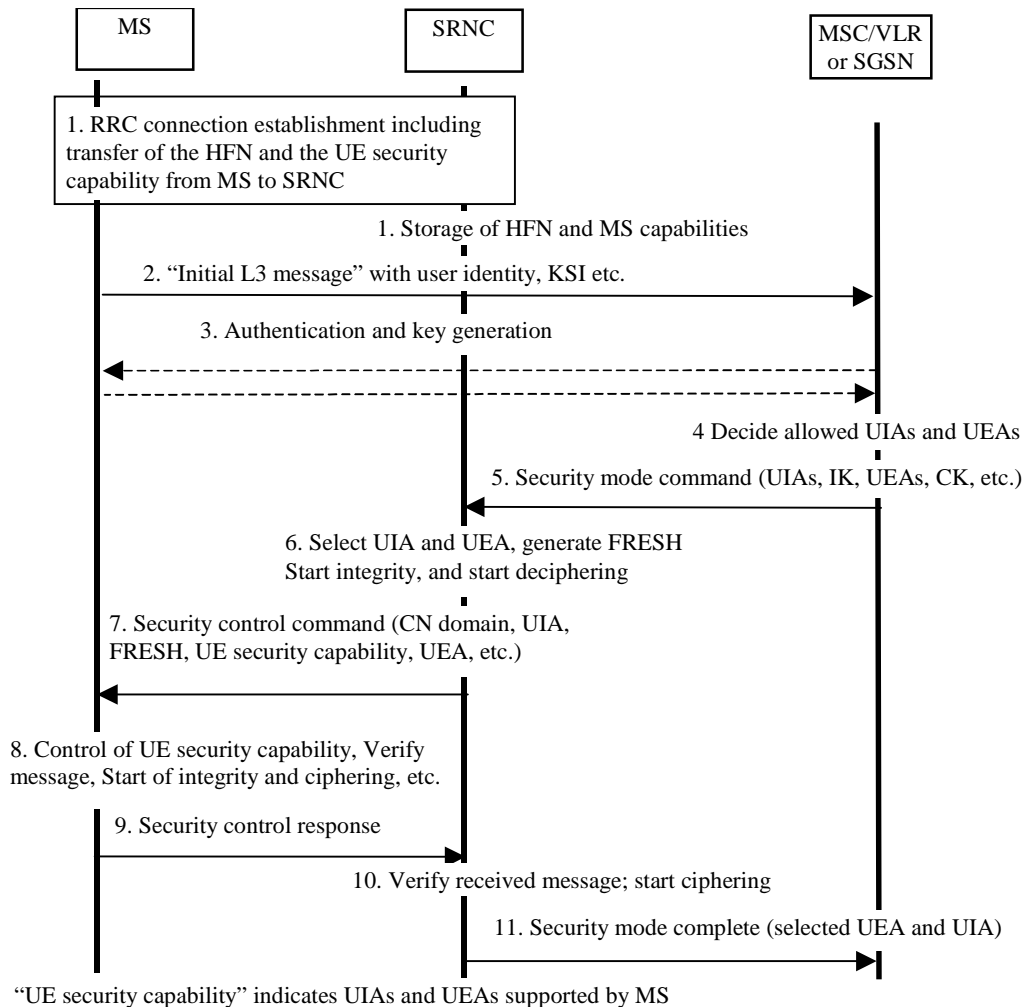


Figure 14: Local authentication and connection set-up

NOTE 1: The network must have the "UE security capability" information before the integrity protection can start, i.e. the "UE security capability" must be sent to the network in an unprotected message. Returning the "UE security capability" later on to the UE in a protected message will give UE the possibility to verify that it was the correct "UE security capability" that reached the network. This latter point, as well as the RRC interwork described below, is yet to be agreed in RAN WG2.

Detailed description of the flow above:

1. RRC connection establishment includes the transfer from MS to RNC of the UE security capability and the hyperframe number to be used as part of one of the input parameters for the integrity algorithm and for the ciphering algorithm. The COUNT-I parameter (together with COUNT which is used for ciphering) is stored in the SRNC.
2. The MS sends the Initial L3 message (Location update request, CM service request, Routing area update request, attach request, paging response etc.) to the relevant CN domain. This message contains relevant MM information e.g. KSI. The KSI (Key Set Identifier) is the number allocated by the CN at the last authentication for this CN domain.
3. Authentication of the user and generation of new security keys (IK and CK) may be performed. A new KSI will then also be allocated.
4. The CN node determines which UIAs and UEAs that are allowed to be used.
5. The CN initiates integrity (and possible also ciphering) by sending the RANAP message Security Mode Command to SRNC. This message contains a list of allowed UIAs and the IK to be used. It may also contain the allowed UEAs and the CK to be used.

6. The SRNC decides which algorithms to use by selecting from the list of allowed algorithms, the first UEA and the first UIA it supports. The SRNC generates a random value FRESH and initiates the downlink integrity protection. If SRNC supports no UIA algorithms in the list, it sends a SECURITY MODE REJECT message to CN.
7. The SRNC generates the RRC message Security control command. The message includes the UE security capability, the UIA and FRESH to be used and possibly also the UEA to be used. Additional information (start of ciphering) may also be included. Since we have two CNs with an IK each, the network must indicate which IK to use. This is obtained by including a CN type indicator information in "Security control command". Before sending this message to the MS, the SRNC generates the MAC-I (Message Authentication Code for Integrity) and attaches this information to the message.
8. At reception of the Security control command message, the MS controls that the UE security capability received is equal to the UE security capability sent in the initial message. The MS computes XMAC-I on the message received by using the indicated UIA, the stored COUNT-I and the received FRESH parameter. The MS verifies the integrity of the message by comparing the received MAC-I with the generated XMAC-I.
9. If all controls are successful, the MS compiles the RRC message Security control command response and generates the MAC-I for this message. If any control is not successful, a SECURITY CONTROL REJECT message is sent from the MS.
10. At reception of the response message, the SRNC computes the XMAC-I on the message. The SRNC verifies the data integrity of the message by comparing the received MAC-I with the generated XMAC-I.
11. The transfer of the RANAP message Security Mode Complete response, including the selected algorithms, from SRNC to the CN node ends the procedure.

The Security mode command to MS starts the downlink integrity protection, i.e. also all following downlink messages sent to the MS are integrity protected and possibly ciphered. The Security mode command response from MS starts the uplink integrity protection and possible ciphering, i.e. also all following messages sent from the MS are integrity protected and possibly ciphered.

6.4.6 Signalling procedures in the case of an unsuccessful integrity check

The following procedure is used by the RNC to request the CN to perform an authentication and to provide a new CK and IK in case of unsuccessful integrity check. This can happen on the RNC side or in the UE side. In the latter case the UE sends a SECURITY CONTROL REJECT message to the RNC.

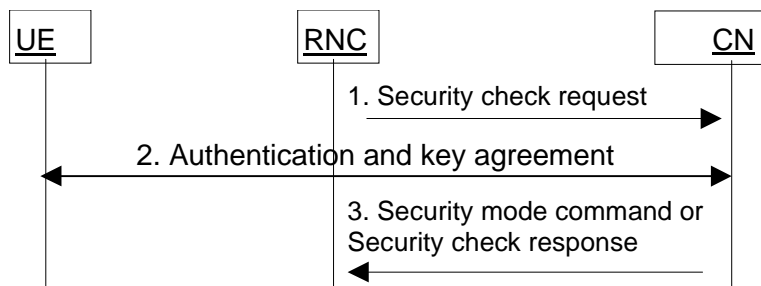


Figure 15: Procedures at unsuccessful integrity check

RNC detects that new security parameters are needed. This may be triggered by (repeated) failure of integrity checks (e.g. COUNT-I went out of synchronisation), or at handover the new RNC does not support an algorithm selected by the old RNC, etc.

1. RNC sends a SECURITY CHECK REQUEST message to CN (indicating cause of the request).
2. The CN performs the authentication and key agreement procedure.
3. If the authentication is successful, the CN sends a Security mode command to RNC. This will restart the ciphering and integrity check with new parameters. If the authentication is not successful, the CN sends a SECURITY CHECK RESPONSE (Cause) to RNC.
4. If the failure situation persists, the connection should be dropped.

6.5 Access link data integrity

6.5.1 General

Most RRC, MM and CC signalling information elements are considered sensitive and must be integrity protected. A message authentication function shall be applied on these signalling information elements transmitted between the MS and the SN.

The UMTS Integrity Algorithm (UIA) shall be used with an Integrity Key (IK) to compute a message authentication code for a given message.

All signalling messages except the following ones shall be integrity protected:

- Notification
- Paging Type 1
- RRC Connection Request
- RRC Connection Setup
- RRC Connection Setup Complete
- RRC Connection Reject
- All System Information messages.

6.5.2 Integrity algorithm

The UIA shall be implemented in the UE and in the RNC.

Figure 16 illustrates the use of the UIA to authenticate the data integrity of a signalling message.

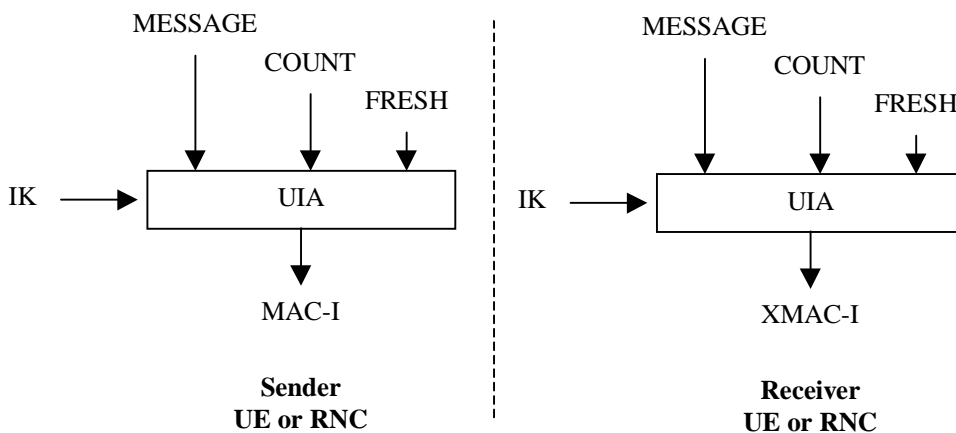


Figure 16: Derivation of MAC-I (or XMAC-I) on a signalling message

The input parameters to the algorithm are the Integrity Key (IK), a time dependent input (COUNT-I), a random value generated by the network side (FRESH), the direction bit (DIRECTION) and the signalling data (MESSAGE). Based on these input parameters the user computes message authentication code for data integrity (MAC-I) using the UMTS Integrity Algorithm (UIA). The MAC-I is then appended to the message when sent over the radio access link. The receiver computes XMAC-I on the message received in the same way as the sender computed MAC-I on the message sent and verifies the data integrity of the message by comparing it to the received MAC-I.

The input parameter COUNT-I protects against replay during a connection. It is a value incremented by one for each integrity protected message. COUNT-I consists of two parts: the HYPERFRAME NUMBER (HFN) as the most significant part and a RRC Sequence Number as the least significant part. The initial value of the hyperframe number is sent by the user to the network at connection set-up. The user stores the greatest used hyperframe number from the previous connection and increments it by one (see 6.4.5xxx). In this way the user is assured that no COUNT-I value is

re-used (by the network) with the same integrity key.

The input parameter FRESH protects network against replay of signalling messages by the user. At connection set-up the network generates a random value FRESH and sends it to the user. The value FRESH is subsequently used by both the network and the user throughout the duration of a single connection. This mechanism assures the network that the user is not replaying any old MAC-Is.

6.5.3 UIA identification

Each UIA will be assigned a 4-bit identifier.

Table 1: UIA identification

Information Element	Length	Value	Remark
UIA Number	4	0000 ₂	Standard UMTS Integrity Algorithm, UIA1
		0001 ₂	Standard UMTS Integrity Algorithm, UIA2
		0010 ₂	Standard UMTS Integrity Algorithm, UIA3
		0011 ₂ to 0111 ₂	Reserved for future expansion
		1xxx ₂	Proprietary UMTS Algorithms

6.6 Access link data confidentiality

6.6.1 General

User data and some signalling information elements are considered sensitive and must be confidentiality protected. To ensure identity confidentiality (see clause 6.1), the Temporary Mobile User Identity must be transferred in a protected mode at allocation time and at other times when the signalling procedures permit it. The confidentiality of user traffic concerns the information transmitted on traffic channels.

These needs for a protected mode of transmission are fulfilled by a confidentiality function which is applied on dedicated channels between the MS and the RNC.

6.6.2 Ciphering algorithm

Algorithm UEA is implemented in both the MS and the RNC. On the RNC side the description below assumes that one algorithm UEA is implemented for each dedicated physical channel [not yet decided]. The data flow on dedicated channels is ciphered by a bit per bit or stream cipher generated by an algorithm UEA.

The UEA shall produce one output as a sequence of keystream bits referred to as a Key Stream Segment (KSS). A KSS of length n shall be produced to encrypt a given segment of plaintext of length n . The bits of KSS are labelled $KSS(0), \dots, KSS(n-1)$, where $KSS(0)$ is the first bit output from the generator. The bits in the KSS shall be used to encrypt or decrypt the data.

6.6.3 UEA identification

Each UEA will be assigned a 4-bit identifier.

Table 2: UEA identification

Information Element	Length	Value	Remark
UEA Number	4	0000 ₂	Standard UMTS Encryption Algorithm, UEA1
		0001 ₂	Standard UMTS Encryption Algorithm, UEA2
		0010 ₂	Standard UMTS Encryption Algorithm, UEA3
		0011 ₂ to 0111 ₂	Reserved for future expansion
		1xxx ₂	Proprietary UMTS Algorithms

6.6.4 Synchronisation of ciphering

The enciphering stream at one end and the deciphering stream at the other end must be synchronised, for the enciphering bit stream and the deciphering bit streams to coincide.

Synchronisation is guaranteed by driving UEA by an explicit time variable, COUNT, derived from an appropriate frame number available at the MS and at the RNC.

The diagram below summarises the implementation indications listed above, with only one enciphering/deciphering procedure represented (the second one for deciphering/enciphering is symmetrical).

6.6.4.1 Layer for ciphering

The layer on which ciphering takes place depends on the Layer 2 mode of the data. Data transmitted on logical channels using a non-transparent RLC mode (either Acknowledged Mode or Unacknowledged Mode) is ciphered in the RLC sub-layer of Layer 2. Data transmitted on a logical channel using the transparent RLC mode is ciphered at the MAC sub-layer of Layer 2.

6.6.4.2 Intra-system handover

When a handover occurs, the CK and IK are transmitted within the system infrastructure from the old RNC to the new one to enable the communication to proceed, and the synchronisation procedure is resumed. The keys CK and IK remain unchanged at handover.

6.7 Network-wide encryption

6.7.1 Introduction

Subclause 6.6 specifies how signalling information, user identity and user traffic information may be confidentiality protected by providing a protected mode of transmission on dedicated channels between the UE and the RNC. Network-wide confidentiality is an extension of this security feature which provides a protected mode of transmission on user traffic channels across the entire network. This gives users assurance that their traffic is protected against eavesdropping on every link within the network, i.e. not just the particularly vulnerable radio links in the access network, but also on the fixed links within the core network.

If network-wide confidentiality of user traffic is provided we assume that access link confidentiality of user traffic between UE and RNC will be replaced with the network-wide service. However, we note that access link confidentiality of signalling information and user identity between UE and RNC will be applied regardless of whether the network-wide user traffic confidentiality service is applied or not.

The provision of an network-wide confidentiality service in 3GMS has an obvious impact on lawful interception. We assume that the same lawful interception interface is required in 3GMS as in second generation systems regardless of whether network-wide confidentiality is applied by the network or not. Thus, we assume that it must be possible to remove any network-wide confidentiality protection within the core network to provide access to plaintext user traffic at the lawful interception interface.

We assume that network-wide confidentiality will be provided by protecting transmissions on user traffic channels using a synchronous stream cipher. This will involve the specification of a standard method for ciphering user traffic on an end-to-end basis and a standard method for managing the ciphering key required at the end points of the protected channel.

6.7.2 Ciphering method

It is assumed that the network-wide encryption algorithm shall be a synchronous stream cipher similar to the access link encryption algorithm. Indeed, it would be desirable to use the same algorithm for access link encryption and for network-wide encryption.

The network-wide synchronous stream cipher shall contain a key stream generator which shall have (at least) two inputs: the end-to-end cipher key (Ks) and an initialisation value (IV). The plaintext shall be encrypted using the key stream by applying an exclusive-or operation to the plaintext on a bit per bit basis to generate the ciphertext. The decryption operation shall involve applying the same key stream to the ciphertext to recover the plaintext.

Synchronisation of the key stream shall be achieved using the initialisation value. Synchronisation information shall be available at both end points of the communication and shall be used to maintain alignment of the key stream. For example, it might be necessary to transmit explicit end-to-end synchronisation frames with the user traffic at certain intervals. Alternatively, it might be possible to use some existing frame structure for network-wide encryption synchronisation purposes. The frequency at which synchronisation information must be made available at each end to ensure reliable transmission will depend on the exact nature of the end-to-end user traffic channel.

Protection against replay of user traffic shall be achieved through the use of a time variable initialisation vector combined with a time variable cipher key. If the same cipher key is used in more than one call then it may be necessary to include a third input to the key stream generator such as a call-id or a time-stamp to protect against replay of the whole call. Note that the stream cipher does not protect against bit toggling so other mechanisms must be used if this type of integrity protection is required on user traffic.

For encryption of voice traffic we assume that Transcoder Free Operation (TFO) is used between the two end points such that the structure and ordering of the transmitted data is maintained with the same boundary conditions at each end of the link. Note that in the initial phases of 3GMS, transcoder free operation may only be possible for user traffic channels which terminate within the same serving network. Furthermore, TFO may only be possible if the entire communication path is within the same serving network. Thus, in non optimal routing cases where the tromboning effect occurs, TFO may not be available, even if the traffic channel terminates within the same serving network.

For encryption of data traffic we assume that a transparent data service is used between the two end points such that the structure and ordering of transmitted data is maintained with the same boundary conditions at each end of the link.

To satisfy lawful interception requirements it must be possible to decrypt end-to-end encrypted traffic within the core network to provide access to plaintext user traffic. Thus decryption facilities (and the end-to-end encryption key) must be available in the core network for lawful interception reasons. Note also that if transcoder free operation is used on voice traffic channels, transcoders must be available in the core network for lawful interception reasons whether network-wide encryption is provided or not.

Issues for further study:

- Specification of encryption synchronisation mechanism;
- Adaptation of TFO voice traffic channels for network-wide confidentiality;
- Adaptation of data traffic channels for network-wide confidentiality;
- The ability to terminate network-wide encryption at network gateways for inter-network user traffic channels;
- The ability to handle multiparty calls, explicit call transfer and other supplementary services;
- Network-wide encryption control – algorithm selection, mode selection, user control

6.7.3 Key management

6.7.3.1 General case

We assume that signalling links within the network are confidentially protected on a link-by-link basis. In particular, we assume that the UE to RNC signalling links are protected using access link security domain keys (see clause 6). We also assume that VLR to RNC signalling links and core network signalling links are protected using network security domain keys (see clause 7). Note that if network-wide encryption can be provided across serving network boundaries (e.g. because inter-network TFO is available) then the signalling links requiring protection will cross network boundaries. In this situation it is important to note that the two serving networks may not be roaming partners yet they still must be able to confidentially protect inter-network signalling by establishing appropriate keys.

The key management scheme for network-wide encryption involves establishing an end-to-end session key between the end points of the traffic channel. It should not be possible to obtain this key by eavesdropping on any transmission links within the network. However, it may be possible to obtain the end-to-end key by compromising certain nodes within the network (e.g. nodes where link encryption terminates).

To satisfy lawful interception requirements it must be possible to decrypt end-to-end encrypted traffic within the core network to provide access to plaintext user traffic. Thus, the end-to-end encryption key (and decryption facilities) must be available in the core network for lawful interception reasons.

Issues for further study:

- Specification of key management scheme for the general case;
- The ability to terminate network-wide encryption key management at network gateways for inter-network user traffic channels.

6.7.3.2 Outline scheme for intra-serving network case

In this case we make the following assumptions:

- Two UEs registered on the same serving network wish to set up an network-wide confidentiality protected call
- The appropriate user traffic channel for encryption can be established between the two UEs
- During connection establishment, the appropriate control information is transmitted to the called party indicating that the incoming connection is end-to-end encrypted.
- During connection establishment, the appropriate control information is transmitted to the relevant VLRs (or other core network entities) indicating that the connection being established is end-to-end encrypted.
- The keys K_a and K_b used to derive the end-to-end session key shall not be used for access link encryption of other data, nor for the derivation of end-to-end session keys with other parties.

The key management scheme is illustrated in the diagram below.

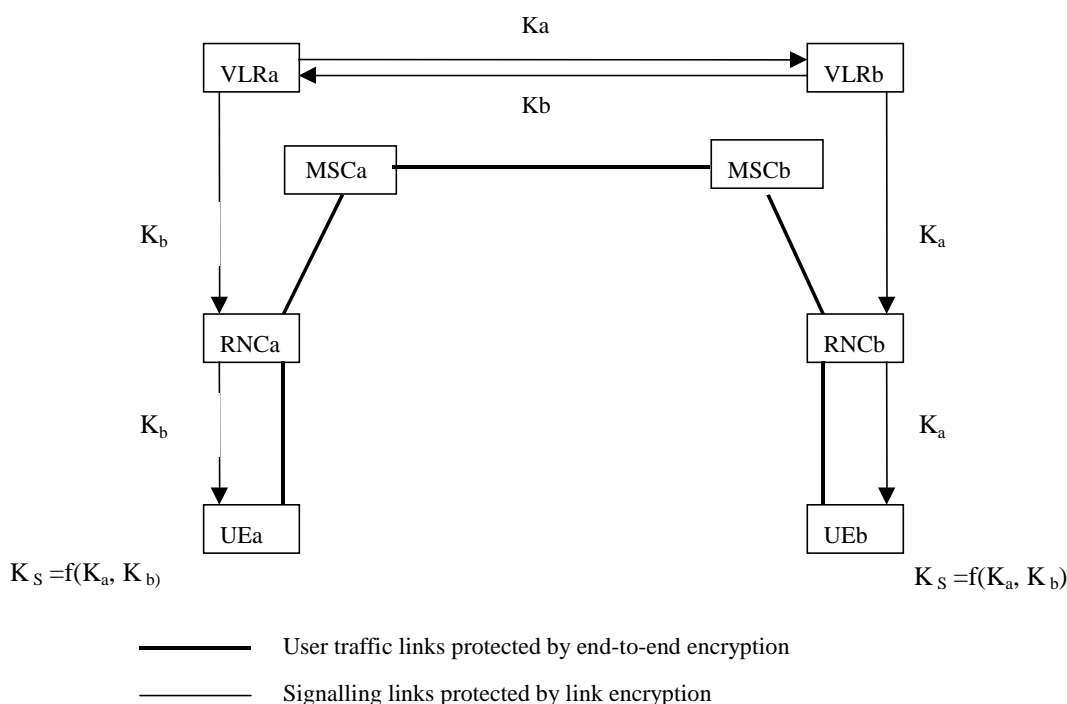


Figure 17: Key management scheme for network-wide encryption

In this scheme VLRa and VLRb exchange access link cipher keys for UEa and UEb. VLRa then passes K_b to UEa, while VLRb passes K_a to UEb. At each end the access link key is transmitted to the UE over protected signalling channels (which may be protected using different access link keys K_a' and K_b'). When each UE has received the other party's access link key, the end-to-end session key K_s is calculated as a function of K_a and K_b .

This key management scheme satisfies the lawful interception requirement since K_s can be generated by VLRa or VLRb and then used by decryption facilities in the core network to provide plaintext user traffic at the lawful interception interface.

Issues for further study:

- The exact mechanism by which the VLRs exchange access link keys during connection set up.

6.7.3.3 Variant on the outline scheme

VLRa and VLRb mutually agree K_s over a secure signalling link using an appropriate key establishment protocol. VLRa then passes K_s to UEa and VLRb passes K_s to UEb.

NOTE: As opposed to the scheme in section 8.2.3, the access link keys K_a and K_b could be used for access link encryption of other data.

6.8 Interoperation and handover between UMTS and GSM

6.8.1 Authentication and key agreement of UMTS subscribers

6.8.1.1 General

For UMTS subscribers,

- UMTS AKA shall be applied when the user is attached to a UTRAN.
- UMTS AKA shall be applied when the user is attached to a GSM BSS, in case the user has R99+ UE and also

the MSC/VLR or SGSN is R99+. In this case, the GSM cipher key Kc is derived from the UMTS cipher/integrity keys CK and IK.

- GSM AKA shall be applied when the user is attached to a GSM BSS, in case the user has R98- UE or the MSC/VLR or SGSN is R98-. In this case, the GSM user response SRES and the GSM cipher key Kc are derived from the UMTS user response RES and the UMTS cipher/integrity keys CK and IK.

The execution of the UMTS (resp. GSM) AKA results in the establishment of a UMTS (resp. GSM) security context between the user and the serving network domain to which the MSC/VLR or SGSN belongs. The user needs to separately establish a security context with each serving network domain.

Figure 18 shows the different scenarios that can occur with UMTS subscribers using either R98- or R99+ UE in a mixed network architecture.

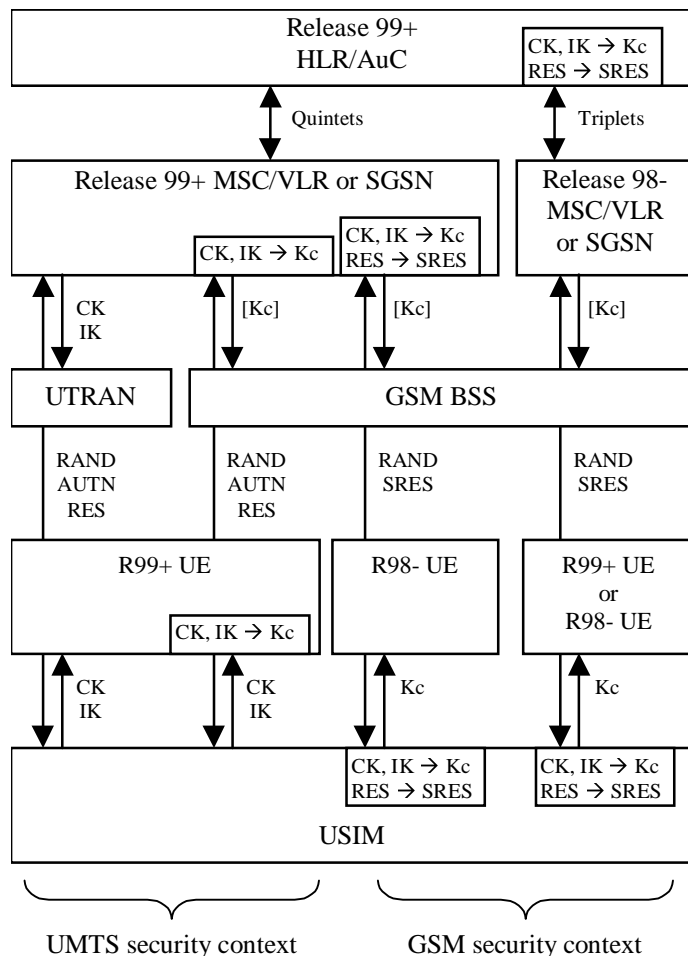


Figure 18: Authentication and key agreement of UMTS subscribers

Note that the UMTS parameters RAND, AUTN and RES are sent transparently through the UTRAN or GSM BSS and that the GSM parameters RAND and SRES are sent transparently through the GSM BSS.

In case of a GSM BSS, ciphering is applied in the GSM BSS for services delivered via the MSC/VLR, and by the SGSN for services delivered via the SGSN. In the latter case the GSM cipher key Kc is not sent to the GSM BSS.

In case of a UTRAN, ciphering is always applied in the RNC, and the UMTS cipher/integrity keys CK and IK are always sent to the RNC.

6.8.1.2 R99+ HLR/AuC

Upon receipt of an *authentication data request* from a R99+ MSC/VLR or SGSN, a R99+ HLR/AuC shall send quintets, generated as specified in 6.3.

Upon receipt of an *authentication data request* from a R98- MSC/VLR or SGSN, a R99+ HLR/AuC shall send triplets, derived from quintets using the following conversion functions:

- a) $c1: RAND_{[GSM]} = RAND$
- b) $c2: SRES_{[GSM]} = XRES_1 [xor XRES_2 [xor XRES_3 [xor XRES_4]]]$
- c) $c3: Kc_{[GSM]} = CK_1 xor CK_2 xor IK_1 xor IK_2$

whereby $XRES_i$ are all 32 bit long and $XRES = XRES_1 [|| XRES_2 [|| XRES_3 [|| XRES_4]]]$ dependent on the length of XRES, and CK_i and IK_i are both 64 bits long and $CK = CK_1 || CK_2$ and $IK = IK_1 || IK_2$.

6.8.1.3 R99+ MSC/VLR or SGSN

UMTS subscriber with R99+ UE

When the user has R99+ UE, UMTS AKA shall be performed using a quintet that is either a) retrieved from the local database, b) provided by the HLR/AuC, or c) provided by the previously visited R99+ MSC/VLR or SGSN. Note that originally all quintets are provided by the HLR/AuC.

UMTS AKA results in the establishment of a UMTS security context; the UMTS cipher/integrity keys CK and IK and the key set identifier KSI are stored in the MSC/VLR or SGSN.

When the user is attached to a UTRAN, the UMTS cipher/integrity keys are sent to the RNC, where the cipher/integrity algorithms are allocated.

When the user is attached to a GSM BSS, UMTS AKA is followed by the derivation of the GSM cipher key from the UMTS cipher/integrity keys. When the user receives service from an MSC/VLR, the derived cipher key Kc is then sent to the BSC (and forwarded to the BTS). When the user receives service from an SGSN, the derived cipher key Kc is applied in the SGSN itself.

UMTS subscriber with R98- UE

When the user has R98- UE, the R99+ MSC/VLR or SGSN shall perform GSM AKA using a triplet that is either

- a) derived by means of the conversion functions c2 and c3 in the R99+ MSC/VLR or SGSN from a quintet that is i) retrieved from the local database, ii) provided by the HLR/AuC, or iii) provided by the previously visited R99+ MSC/VLR or SGSN, or
- b) provided as a triplet by the previously visited MSC/VLR or SGSN.

Note that all triplets are derived from quintets, be it in the HLR/AuC or in an MSC/VLR or SGSN.

This results in the establishment of a GSM security context; the GSM cipher key Kc and the cipher key sequence number CKSN are stored in the MSC/VLR or SGSN.

In this case the user is attached to a GSM BSS. When the user receives service from an MSC/VLR, the GSM cipher key is sent to the BSC (and forwarded to the BTS). When the user receives service from an SGSN, the derived cipher key Kc is applied in the SGSN itself.

6.8.1.4 R99+ UE

R99+ UE with a USIM inserted and attached to a UTRAN shall only support UMTS AKA and shall not support GSM AKA.

R99+ UE with a USIM inserted and attached to a GSM BSS shall support UMTS AKA and may support GSM AKA. Support of GSM AKA is required to allow registration in a R98- MSC/VLR or SGSN.

The execution of UMTS AKA results in the establishment of a UMTS security context; the UMTS cipher/integrity keys CK and IK and the key set identifier KSI are stored in the UE.

The execution of GSM AKA results in the establishment of a GSM security context; the GSM cipher key Kc and the cipher key sequence number CKSN are stored in the UE.

When the user is attached to a GSM BSS and the user participates in UMTS AKA, the GSM cipher key Kc is derived

from the UMTS cipher/integrity keys CK and IK using conversion function c3.

6.8.1.5 USIM

The USIM shall support UMTS AKA. When the UE provides the USIM with RAND and AUTN and the verification of AUTN is successful, the USIM shall respond with the UMTS user response RES and the UMTS cipher/integrity keys CK and IK.

The USIM may support GSM AKA. In that case, when the UE provides the USIM with RAND, the USIM first computes the UMTS user response RES and the UMTS cipher/integrity keys CK and IK. The USIM then derives the GSM user response SRES and the GSM cipher key Kc using the conversion functions c2 and c3. The USIM then sends the GSM user response SRES and the GSM cipher key Kc to the UE.

In case the USIM does not support GSM AKA, the USIM responds with an appropriate message to the R99+ UE. USIM that do not support GSM AKA cannot operate in R98- UE.

6.8.2 Authentication and key agreement for GSM subscribers

6.8.2.1 General

For GSM subscribers, GSM AKA shall always be used.

The execution of the GSM AKA results in the establishment of a GSM security context between the user and the serving network domain to which the MSC/VLR or SGSN belongs. The user needs to separately establish a security context with each serving network domain.

When in a UTRAN, the UMTS cipher/integrity keys CK and IK are derived from the GSM cipher key Kc.

Figure 19 shows the different scenarios that can occur with GSM subscribers using either R98- or R99+ UE in a mixed network architecture.

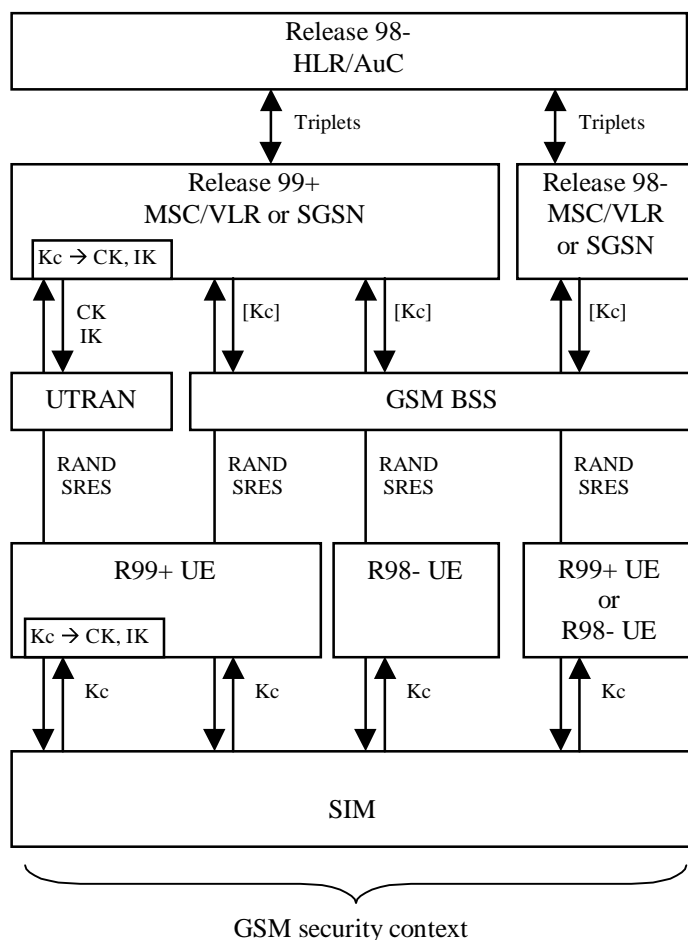


Figure 19: Authentication and key agreement for GSM subscribers

Note that the GSM parameters RAND and RES are sent transparently through the UTRAN or GSM BSS.

In case of a GSM BSS, ciphering is applied in the GSM BSS for services delivered via the MSC/VLR, and by the SGSN for services delivered via the SGSN. In the latter case the GSM cipher key Kc is not sent to the GSM BSS.

In case of a UTRAN, ciphering is always applied in the RNC, and the UMTS cipher/integrity keys CK and IK are always sent to the RNC.

6.8.2.2 R99+ MSC/VLR or SGSN

The R99+ MSC/VLR or SGSN shall perform GSM AKA using a triplet that is either a) retrieved from the local database, b) provided by the HLR/AuC, or c) provided by the previously visited MSC/VLR or SGSN. Note that all triplets are originally provided by the R98- HLR/AuC.

GSM AKA results in the establishment of a GSM security context; the GSM cipher key Kc and the cipher key sequence number CKSN are stored in the MSC/VLR or SGSN.

When the user is attached to a UTRAN, the R99+ MSC/VLR or SGSN derives the UMTS cipher/integrity keys from the GSM cipher key using the following conversion functions:

- $c4: CK_{[UMTS]} = 0...0 \parallel Kc;$
- $c5: IK_{[UMTS]} = Kc \parallel Kc;$

whereby in $c4$, Kc occupies the 64 least significant bits of CK.

The UMTS cipher/integrity keys are then sent to the RNC where the ciphering and message authentication algorithms are allocated.

When the user is attached to a GSM BSS and the user receives service from an MSC/VLR, the derived cipher key Kc is

sent to the BSC (and forwarded to the BTS). When the user receives service from an SGSN, the derived cipher key Kc is applied in the SGSN itself.

6.8.2.3 R99+ UE

R99+ UE with a SIM inserted, shall participate only in GSM AKA.

GSM AKA results in the establishment of a GSM security context; the GSM cipher key Kc and the cipher key sequence number CKSN are stored in the UE.

When the user is attached to a UTRAN, R99+ UE shall derive the UMTS cipher/integrity keys Ck and IK from the GSM cipher key Kc using the conversion functions c4 and c5.

6.8.3 Intersystem handover for CS Services – from UTRAN to GSM BSS

6.8.3.1 UMTS security context

At the network side, two cases are distinguished:

- a) In case of a handover to a GSM BSS controlled by the same MSC/VLR, the MSC/VLR derives the GSM cipher key Kc from the stored UMTS cipher/integrity keys CK and IK (using the conversion function c3) and sends Kc to the BSC (which forwards it to the BTS).
- b) In case of a handover to a GSM BSS controlled by another MSC/VLR, the initial MSC/VLR derives the GSM cipher key from the stored UMTS cipher/integrity keys (using the conversion function c3) and sends it to the BSC via the (second) MSC/VLR controlling the BSC. The initial MSC/VLR remains the anchor point throughout the service.

At the user side, in either case, the UE derives the GSM cipher key Kc from the stored UMTS cipher/integrity keys CK and IK (using the conversion function c3) and applies Kc.

6.8.3.2 GSM security context

At the network side, two cases are distinguished:

- a) In case of a handover to a GSM BSS controlled by the same MSC/VLR, the MSC/VLR sends the stored GSM cipher key Kc to the BSC (which forwards it to the BTS).
- b) In case of a handover to a GSM BSS controlled by another MSC/VLR, the initial MSC/VLR sends the stored GSM cipher key Kc to the BSC via the (second) MSC/VLR controlling the BSC. The initial MSC/VLR remains the anchor point throughout the service.

At the user side, in either case, the UE applies the stored GSM cipher key Kc.

6.8.4 Intersystem handover for CS Services – from GSM BSS to UTRAN

6.8.4.1 UMTS security context

At the network side, two cases are distinguished:

- a) In case of a handover to a UTRAN controlled by the same MSC/VLR, the stored UMTS cipher/integrity keys CK and IK are sent to the new RNC.
- b) In case of a handover to a UTRAN controlled by another MSC/VLR, the initial MSC/VLR sends the stored UMTS cipher/integrity keys CK and IK to the new RNC via the (second) MSC/VLR that controls the new RNC. The initial MSC/VLR remains the anchor point for throughout the service.

At the user side, in either case, the UE applies the stored UMTS cipher/integrity keys CK and IK.

6.8.4.2 GSM security context

At the network side, two cases are distinguished:

- a) In case of a handover to a UTRAN controlled by the same MSC/VLR, UMTS cipher/integrity keys CK and IK are derived from the stored GSM cipher key Kc (using the conversion functions c4 and c5) and sent to the new RNC.
- b) In case of a handover to a UTRAN controlled by another MSC/VLR, the initial MSC/VLR sends the stored GSM cipher key Kc to the (second) MSC/VLR controlling the new RNC. That MSC/VLR derives UMTS cipher/integrity keys CK and IK which are then forwarded to the new RNC. The initial MSC/VLR remains the anchor point for throughout the service.

At the user side, in either case, the UE derives the UMTS cipher/integrity keys CK and IK from the stored GSM cipher key Kc (using the conversion functions c4 and c5) and applies them.

6.8.5 Intersystem change for PS Services – from UTRAN to GSM BSS

6.8.5.1 UMTS security context

At the network side, three cases are distinguished:

- a) In case of a handover to a GSM BSS controlled by the same SGSN, the SGSN derives the GSM cipher key Kc from the stored UMTS cipher/integrity keys CK and IK (using the conversion function c3) and applies it.
- b) In case of a handover to a GSM BSS controlled by another R99+ SGSN, the initial SGSN sends the stored UMTS cipher/integrity keys CK and IK to the new SGSN. The new SGSN stores the keys, derives the GSM cipher key Kc and applies the latter. The new SGSN becomes the new anchor point for the service.
- c) In case of a handover to a GSM BSS controlled by a R98- SGSN, the initial SGSN derives the GSM cipher key Kc and sends the GSM cipher key Kc to the new SGSN. The new SGSN stores the GSM cipher key Kc and applies it. The new SGSN becomes the new anchor point for the service.

At the user side, in case a) or b), the UE derives the GSM cipher key Kc from the stored UMTS cipher/integrity keys CK and IK (using the conversion function c3) and applies it.

In case c), the handover makes that the UMTS security context between the user and the serving network domain is lost. The UE needs to be aware of that. The UE then deletes the UMTS cipher/integrity keys CK and IK and stores the derived GSM cipher key Kc.

6.8.5.2 GSM security context

At the network side, two cases are distinguished:

- a) In case of a handover to a GSM BSS controlled by the same SGSN, the SGSN starts to apply the stored GSM cipher key Kc.
- b) In case of a handover to a GSM BSS controlled by another SGSN, the initial SGSN sends the stored GSM cipher key Kc to the (new) SGSN controlling the BSC. The new SGSN stores the key and applies it. The new SGSN becomes the new anchor point for the service.

At the user side, in both cases, the UE applies the GSM cipher key Kc that is stored.

6.8.6 Intersystem change for PS services – from GSM BSS to UTRAN

6.8.6.1 UMTS security context

At the network side, two cases are distinguished:

- a) In case of a handover to a UTRAN controlled by the same SGSN, the stored UMTS cipher/integrity keys CK and IK are sent to the new RNC.

- b) In case of a handover to a UTRAN controlled by another SGSN, the initial SGSN sends the stored UMTS cipher/integrity keys CK and IK to the (new) SGSN controlling the new RNC. The new SGSN becomes the new anchor point for the service. The new SGSN then stores the UMTS cipher/integrity keys CK and IK and sends them to the new RNC.

At the user side, in both cases, the UE applies the stored UMTS cipher/integrity keys CK and IK.

6.8.6.2 GSM security context

At the network side, two cases are distinguished:

- a) In case of a handover to a UTRAN controlled by the same SGSN, the SGSN derives UMTS cipher/integrity keys CK and IK from the stored GSM cipher key Kc (using the conversion functions c4 and c5) and sends them to the new RNC.
- b) In case of a handover to a UTRAN controlled by another SGSN, the initial SGSN sends the stored GSM cipher key Kc to the (new) SGSN controlling the new RNC. The new SGSN becomes the new anchor point for the service. The new SGSN stores the GSM cipher key Kc and derives the UMTS cipher/integrity keys CK and IK which are then forwarded to the new RNC.

At the user side, in both cases, the UE derives the UMTS cipher/integrity keys CK and IK from the stored GSM cipher key Kc (using the conversion functions c4 and c5) and applies them.

7 Network domain security mechanisms

This subclause describes mechanisms for establishing secure signalling links between network nodes, in particular between SN/VLRs and HE/AuCs. Such procedures may be incorporated into the roaming agreement establishment process.

7.1 Overview of Mechanism

The proposed mechanism consists of three layers.

7.1.1 Layer I

Layer I is a secret key transport mechanism based on an asymmetric crypto-system and is aimed at agreeing on a symmetric session key for each direction of communication between two networks X and Y.

NOTE 1: For secure transmission of sensitive data between elements of one and the same network operator only Layer II and Layer III will be involved. In this case Layer I can be dropped. There will also be only one symmetric key in this case, to be used for communication between network elements of one network operator in both directions.

The party wishing to send sensitive data initiates the mechanism and chooses the symmetric session key it wishes to use for sending the data to the other party. The other party shall choose a symmetric session key of its own, used for sending data in the other direction. This second key shall be transported immediately after the first key has been successfully transported. The session symmetric keys are protected by asymmetric techniques. They are exchanged between certain elements called the *Key Administration Centres* (KACs) of the network operators X and Y. The format of the Layer I transmissions is based on ISO/IEC 11770-3: *Key Management – Mechanisms using Asymmetric Techniques* [10]. Public Keys may be exchanged between a pair of network operators when setting up their roaming agreement (manual roaming) or they may be distributed by a TTP e.g. in case of automatic roaming.

NOTE 2: In the case of manual roaming no general PKI is required.

NOTE 3: For the transmission of the messages, no special assumptions regarding the transport protocol are made, a possible example would be IP.

7.1.2 Layer II

In Layer II the agreed symmetric keys for sending and receiving data are distributed by the KACs in each network to the relevant network elements. For example, an AuC will normally send sensitive authentication data to VLRs belonging to other networks and will therefore get a session key from its KAC. Layer II is carried out entirely inside one operator's network. It is clear that the distribution of the symmetric keys to the network elements must be carried out in a secure way, as not to compromise the whole system. Therefore, in Annex E a mechanism for distributing the keys, which very similar to that of Layer I, is proposed for Layer II.

7.1.3 Layer III

Layer III uses the distributed symmetric keys for securely exchanging sensitive data between the network elements of one operator (internal use) or different operators (external use) by means of a symmetric encryption algorithm. A block cipher (e.g. BEANO, which has been developed by ETSI SAGE [11]) shall be used for this purpose, as defined in 3G TS 33.105. The encrypted (resp. authenticity/integrity-protected) messages will be transported via the MAP protocol.

7.1.4 General Overview

Figure 16 provides an overview of the whole mechanism. Note that the messages are not fully specified in this figure. Rather, only the "essential" parts of the messages are given. More details on the format of the messages in the single layers will be provided in subsequent chapters.

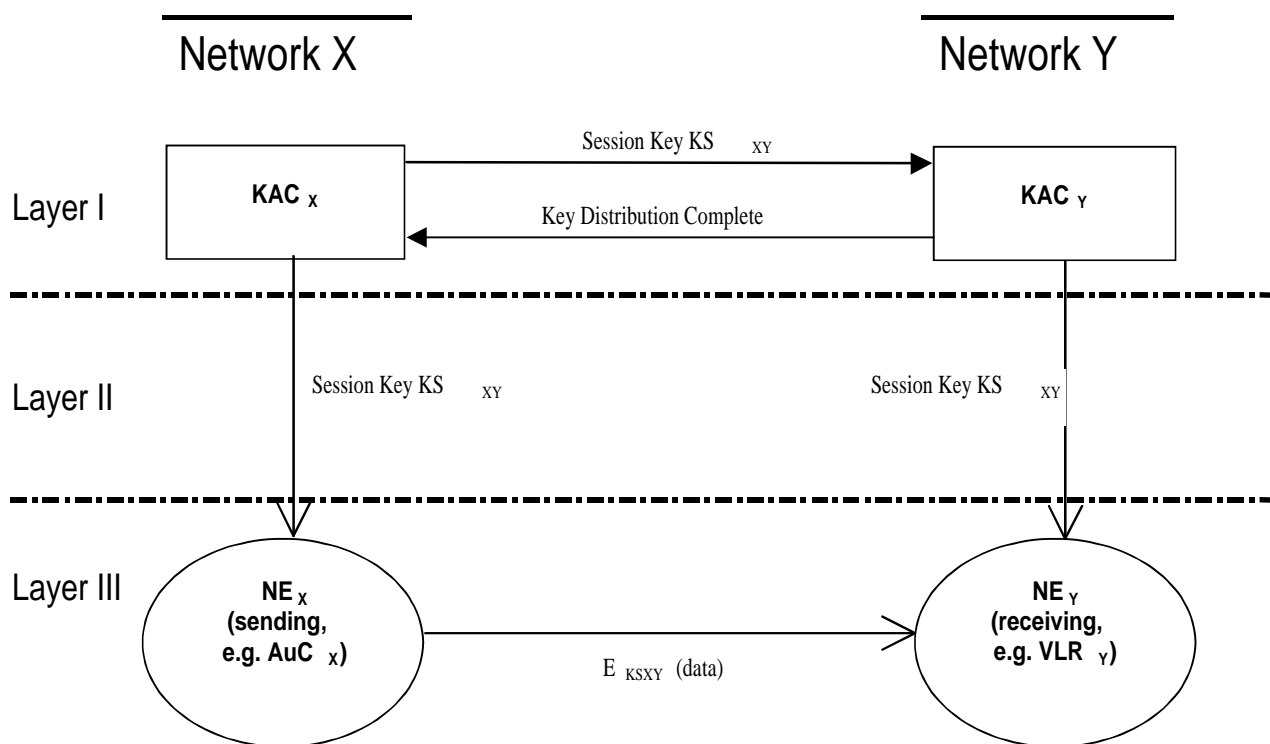


Figure 20: Overview of Proposed Mechanism

$E_{KSXY}(\text{data})$ denotes encryption of data by a symmetric algorithm using the session key from network X to network Y. (If the data are sent inside one operator's network, $X = Y$).

7.2 Layer I Message Format

Layer I describes the communication between two newly defined network entities of different networks, the so-called Key Administration Centres (KACs).

NOTE: We do not make any assumptions about the protocols to be used for this communications, although IP might be the most likely candidate.

7.2.1 Properties and Tasks of Key Administration Centres

There is only one KAC per network operator. KACs perform the following tasks:

- Generation and storage of its own asymmetric key pairs (different key pairs used for signing/verifying and encrypting/decrypting, cf. 7.2.2)
- Storage of public keys of KACs of other network operators
- Generation and storage of symmetric session keys for sending sensitive information to network entities of other networks
- Reception and storage of symmetric session keys for receiving sensitive information from network entities of other networks
- Secure distribution of symmetric session keys to network entities in the same network

Due to these sensitive tasks, a KAC has to be physically secured.

7.2.2 Transport of Session Keys

The transport of session keys in Layer I is based on asymmetric cryptographic techniques (cf. [10]).

[Note: Public key certificates shall be included in Text3 if required.]

In order to establish a symmetric session key with version no. i to be used for sending data from X to Y , the KAC_X sends a message containing the following data to the KAC_Y :

$E_{PK(Y)} \{ X Y i KS_{XY}(i) RND_X Text1 D_{SK(X)}(Hash(X Y i KS_{XY}(i) RND_X Text1)) Text2 \} Text3$

The reasons for this message format are as follows:

- Encrypting the message with the public key used for encrypting of the receiving network Y provides message confidentiality, while decrypting the message body with the private key used for signing of the sending network X provides message integrity and authenticity.
- X includes RND_X to make sure that the message contents contains some random data before signing.

NOTE: The hash function used shall be collision-resistant and have the one-way property.

The symmetric session keys $KS_{XY}(i)$ should be periodically updated by this process, thereby moving on to $KS_{XY}(i+1)$. For each new session key KS_{XY} i is incremented by one.

After having successfully decrypted the key transport message and having verified the digital signature of the sending network, including the hash value, and having checked the received i the receiving network starts Layer II activities.

If anything goes wrong, e.g. computing the hash value of $X || Y || i || KS_{XY}(i) || RND_X || Text1$ does not yield the expected result, a RESEND message should be sent by Y to X in the form

RESEND Y X

Y shall reject messages with i smaller or equal than the currently used i .

After having successfully distributed the symmetric session key received by network X to its own network entities, network Y sends to X a Key Distribution Complete Message. This is an indication to KAC_X to start with the distribution of the key to its own entities, which can then start to use the key immediately. The message takes the form

$KEY_DIST_COMPLETE Y X i RND_Y D_{SK(Y)}(Hash(KEY_DIST_COMPLETE Y X i RND_Y))$

where i indicates the distributed key and RND_Y is a random number generated by Y . The digital signature is appended for integrity and authenticity purposes. Y includes RND_Y to make sure that the message contents determined by X will be modified before signing.

Since most of the signalling messages to be secured are bidirectional in character, immediately after successful completion the procedure described here shall be repeated, now with Y choosing a key $KS_{YX}(i)$ to be used in the reverse

direction, and X being the receiving party. Thereby keys for both directions are established.

7.3 Layer II Message Format

It shall be stressed here once again that the distribution of the symmetric session keys, which has to be performed in Layer II, must be done securely. For a detailed proposal which is based on the asymmetric key transport mechanism of Layer I, see Annex E.

In order to ensure that no network element starts enciphering with a key that not all potentially corresponding network elements have received yet, the following approach is suggested:

The distribution of the session keys KS_{XY} in network X having initiated the Layer I message exchange should not begin before the Key Distribution Complete Message from the receiving network Y has been received by KAC_X in Layer I. As soon as a network element of X has received a session key KS_{XY} , it may start enciphering with this key.

A similar statement holds if the transported session keys are used internally only: In this case, all network elements of X should get the symmetric session keys KS_{XX} for internal use as decryption keys (marked with flag RECEIVED) first; if all network elements of X have acknowledged that they have recovered these keys, the KAC_X sends the same key KS_{XX} again as encryption keys (marked with flag SEND). Again, as soon as a network element of X has received an encryption key (marked with flag SEND), it may start enciphering with this key.

7.4 Layer III Message Format

7.4.1 General Structure of Layer III Messages

Layer III messages are transported via the MAP protocol, that means, they form the payload of a MAP message after the original MAP message header. For Layer III Messages, three levels of protection (or protection modes) are defined providing the following security features:

Protection Mode 0: No Protection

Protection Mode 1: Integrity, Authenticity

Protection Mode 2: Confidentiality, Integrity, Authenticity

NOTE: GTP based transmission data will also contain sensitive data. This data will require an equal level of security (e.g. authentication parameters, subscriber profile information, etc.). The specifications will be extended to address GTP based transmissions using industry standard techniques (such as IPSEC) where appropriate. The possibility of extending these mechanisms to secure CAP/INAP signalling is also being investigated.

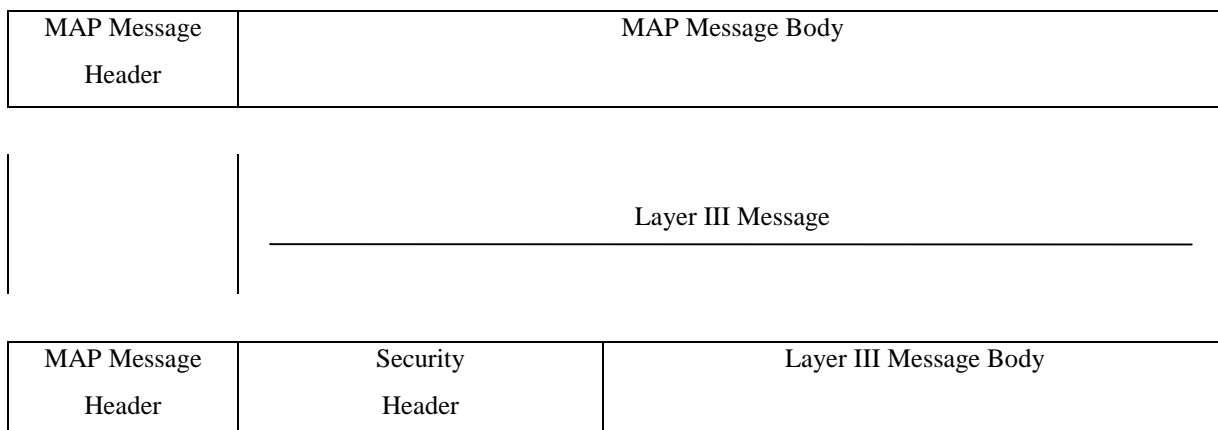
Layer III messages consist of a Security Header and the Layer III Message Body that is protected by the symmetric encryption algorithm, using the symmetric session keys that were distributed in layer II. Layer III Messages have the following structure:

Security Header	Layer III Message Body
-----------------	------------------------

In all three protection modes, the security header is transmitted in cleartext. It shall comprise the following information:

- protection mode;
- other security parameters (if required, e.g. IV, Version No. of Key Used, Encryption Algorithm Identifier, Mode of Operation of Encryption Algorithm, etc.).

Both parts of the Layer III messages, security header and message body, will become part of the "new" MAP message body. Therefore, the complete "new" MAP messages take the following form in this proposal:



Like the security header, the MAP message header is transmitted in cleartext. In protection mode 2 providing confidentiality, the Layer III Message Body is essentially the encrypted "old" MAP message body. For integrity and authenticity, an encrypted hash calculated on the MAP message header, security header and the "old" MAP message body in cleartext is included in the Layer III Message Body in protection modes 1 and 2. In protection mode 0 no protection is offered, therefore the Layer III Message Body is identical to the "old" MAP message body in cleartext in this case.

In the following subchapters, the contents of the Layer III Message Body for the different protection modes will be specified in greater detail.

7.4.2 Format of Layer III Message Body

7.4.2.1 Protection Mode 0

Protection Mode 0 offers no protection at all. Therefore, the Layer III message body in protection mode 0 is identical to the original MAP message body in cleartext.

7.4.2.2 Protection Mode 1

The message body of Layer III messages in protection mode 1 takes the following form:

$$\text{Cleartext}||\text{TVP}||E_{K_{SXY(i)}}(\text{Hash}(\text{MAP Header}||\text{Security Header}||\text{Cleartext}||\text{TVP}))$$

where "Cleartext" is the message body of the original MAP message in cleartext.

Authentication of origin is achieved by encrypting the hash value of the cleartext, since only a network element knowing $K_{SXY(i)}$ can encrypt in this way. Message integrity and validation is achieved by hashing and encrypting the cleartext.

[Note: The case $X=Y$, i.e. only one key for sending and receiving, corresponds to internal use inside network X.]

Note that protection mode 1 is compatible to the present MAP protocol, since everything appended to the cleartext may be ignored by a receiver incapable of decrypting.

7.4.2.3 Protection Mode 2

The Layer III Message Body in protection mode 2 takes the following form:

$$E_{K_{SXY(i)}}(\text{Cleartext}||\text{TVP}||\text{Hash}(\text{MAP Header}||\text{Security Header}||\text{Cleartext}||\text{TVP}))$$

where "Cleartext" is the original MAP message in cleartext.

Message confidentiality is achieved by encrypting with the session key. This also provides for authentication of origin, since only a network element knowing $K_{SXY}(i)$ can encrypt in this way. Message integrity and validation is achieved by hashing the cleartext. TVP is a random number that avoids traceability.

[Note1: There is need for replay protection of Layer III messages; this is for further study. By making use of a TVP as timestamp (perhaps derived from an overall present master time) this could be achieved.]

[Note2: In protection mode 2, the original MAP message body will be encrypted in order to achieve confidentiality. For integrity and authenticity, an encrypted hash calculated on the MAP message header and body in cleartext (i.e. the original MAP message) is appended to the messages in protection mode 1 and 2. All protection modes need a security header to be added. When implementing these changes, care has to be taken that the maximum length of a MAP message (approx. 250 byte) is not exceeded by the protected MAP messages of Layer III, otherwise substantial changes to the underlying SS7 protocol levels (TCAP and SCCP) would have to be made.]

7.5 Mapping of MAP Messages and Modes of Protection

The network operator should be able to assign the mode of protection to each MAP message in order to adapt the level of protection according to its own security policy. Guidance may be obtained from the SS7 Signalling Protocols Threat Analysis [12].

8 Application security mechanisms

8.1 Secure messaging between the USIM and the network

This clause will specify the structure of the secured messages in a general format so that they can be used over a variety of transport channels between an entity in a 3GMS network and an entity in the USIM. The sending/receiving entity in the 3GMS network and in the USIM are responsible for applying the security mechanisms to application messages as defined to provide the security features identified in 5.4.1.

Note: A joint 3GPP TSG-SA 'Security'/3GPP TSG-T 'USIM' working group may be required to progress this issue.

8.2 Void

8.3 Mobile IP security

The introduction of Mobile IP functionality for end users in 3G has no influence on the security architecture for 3G.

Mobile IP terminals may be equipped with security functionality independent of the 3G network access security in order to allow security functions outside the 3G network.

3G networks, supporting Mobile IP services, should support its inherent security functionality.

On the other hand, 3G network access security architecture can not be influenced or reduced by the Mobile IP option.

The Mobile IP security functionality must thus be separate from the 3G network access security and it is developed in an other forum, IETF.

Annex A (informative): Requirements analysis

[In this part of the document we will address the question "do the features meet the requirements?"]

Annex B (informative): Enhanced user identity confidentiality

This mechanism allows the identification of a user on the radio access by means of the permanent user identity encrypted by means of a group key. The mechanism described here can be used in combination with the mechanism described in 6.2 to provide user identity confidentiality in the event that the user not known by means of a temporary identity in the serving network.

The mechanism assumes that the user belongs to a user group with group identity GI. Associated to the user group is a secret group key GK which is shared between all members of the user group and the user's HE, and securely stored in the USIM and in the HE/HLR.

The mechanism is illustrated in Figure B.1.

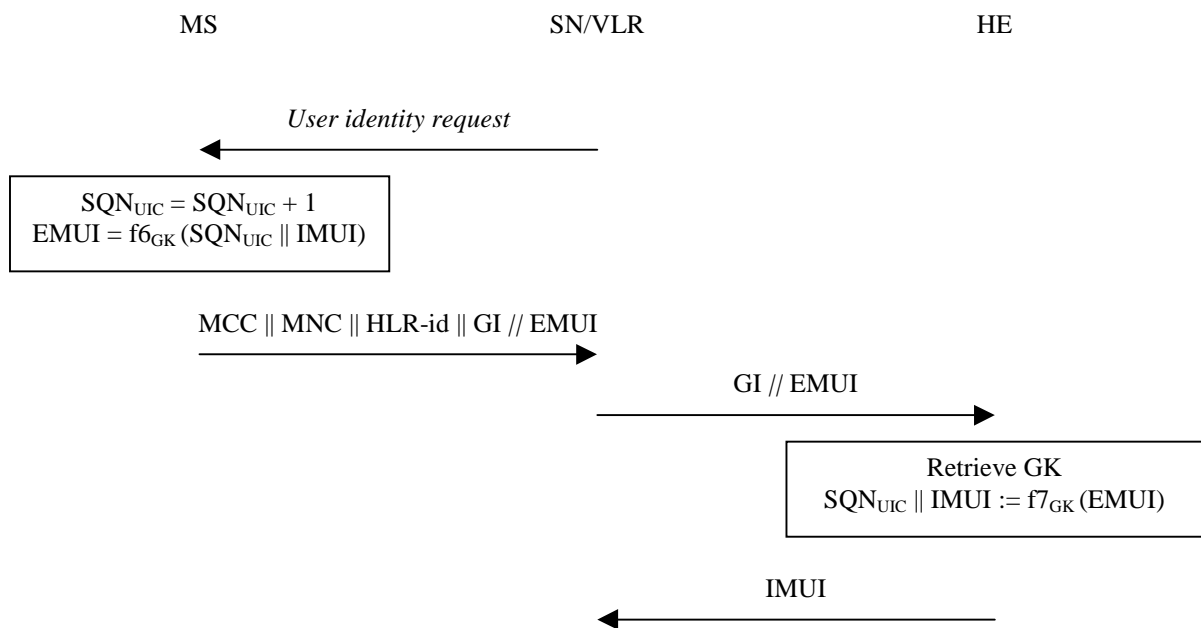


Figure B.1: Identification by means of the IMUI encrypted by means of a group key

The user identity procedure is initiated by the visited VLR. The visited VLR requests the user to send its permanent user identity.

Upon receipt the user increments SQN_{UGC} as a time variant parameter. The user encrypts SQN_{UGC} and the IMUI with enciphering algorithm f_6 and his group key GK. The SQN_{UGC} prevents traceability attacks. The user sends a response to the SN/VLR that includes the MCC || MNC and the first three digits of the user's MSIN that identify an HLR within the user's HE core network.

Note: Alternatives are

- to define a single network element within each HE which performs all decryption related to EMUI, or
- that all gateway MSCs are able to decrypt EMUI and route the message to the correct HLR

Upon receipt of that response the SN/VLR should resolve the user's HE/HLR address from MCC || MNC || HLR-id and forwards the group identity GI and the user's EMUI to the user's HE/HLR.

Upon receipt the HE/HLR retrieves the group key GK associated with the group identity GI. The HE/HLR then decrypts EMUI with the deciphering algorithm f_7 ($f_7 = f_6^{-1}$) and the group key GK and retrieves SQN_{UGC} and IMUI. SQN_{UGC} is no longer used. The HE/HLR then sends the IMUI in a response to the visited SN/VLR.

Annex C (informative): Management of sequence numbers

This annex is devoted to the management of sequence numbers for the authentication and key agreement protocol.

C.1 Generation of sequence numbers in the Authentication Centre

According to section 6.3 of this specification, authentication vectors are generated in the authentication centre (AuC) using sequence numbers. This section specifies how these sequence numbers are generated. It is taken into account that authentication vectors may be generated and sent by the AuC in batches such that all authentication vectors in one batch are sent to the same SN/VLR.

- (1) In its binary representation, the sequence number consists of two concatenated parts $SN = SEQ \parallel IND$. SEQ is the batch number, and IND is an index numbering the authentication vectors within one batch. SEQ in its turn consists of two concatenated parts $SEQ = SEQ1 \parallel SEQ2$. $SEQ1$ represents the most significant bits of SEQ , and $SEQ2$ represents the least significant bits of SEQ . IND represents the least significant bits of SN . If the concept of batches is not supported then IND is void and $SN = SEQ$.
- (2) There is a counter SEQ_{HE} in the HE. $SEQ = SEQ1 \parallel SEQ2$ is stored by this counter. SEQ_{HE} is an individual counter, i.e. there is one per user.
- (3) There is a global counter, e.g. a clock giving universal time. For short we call the value of this global counter at any one time GLC . If GLC is taken from a clock it is computed mod p , where $p = 2^n$ and n is the length of GLC and of $SEQ2$ in bits.
- (4) If GLC is taken from a clock then there is a number $D > 0$ such that the following holds:
 - (i) the time interval between two consecutive increases of the clock (the clock unit) shall be chosen such that, for each user, at most D batches are generated at the AuC during any D clock units;
 - (ii) the clock rate shall be significantly higher than the average rate at which batches are generated for any user;
 - (iii) $D \ll 2^n$.
- (5) When the HE needs new sequence numbers SN to create a new batch of authentication vectors, HE retrieves the (user-specific) value of $SEQ_{HE} = SEQ1_{HE} \parallel SEQ2_{HE}$ from the database.
 - (i) If $SEQ2_{HE} < GLC < SEQ2_{HE} + p - D + 1$ then HE sets $SEQ = SEQ1_{HE} \parallel GLC$;
 - (ii) if $GLC \leq SEQ2_{HE} \leq GLC + D - 1$ or $SEQ2_{HE} + p - D + 1 \leq GLC$ then HE sets $SEQ = SEQ_{HE} + 1$;
 - (iii) if $GLC + D - 1 < SEQ2_{HE}$ then HE sets $SEQ = (SEQ1_{HE} + 1) \parallel GLC$.
 - (iv) The i -th authentication vector in the batch receives the sequence number $SN = SEQ \parallel i$.
 - (v) After the generation of the first authentication vector in the batch has been completed SEQ_{HE} is reset to SEQ .

NOTES

1. The clock unit and the value D have to be chosen with care so that condition (4)(i) is satisfied for every user at all times. Otherwise, user identity confidentiality may be compromised. When the parameters are chosen appropriately sequence numbers for a particular user do not reveal significant information about the user's identity. In particular, IND is to be sufficiently short so that no unacceptably long contiguous strings of sequence numbers are generated.
If authentication vectors for the CS and the PS domains are not separated by other means it is recommended to choose $D > 1$ as requests from the two different domains may arrive completely independently.
2. The use of IND is only for the benefit of the USIM (see note 4 in Annex C.2). When D is chosen sufficiently large then several authentication vectors can be generated at the same time by (5)(ii) even when IND is not present.

C.2 Handling of sequence numbers in the USIM

This section assumes that sequence numbers are generated according to Annex C.1. If the concept of batches is not supported then batch numbers and sequence numbers coincide and the parameter *IND* is not used.

The USIM keeps track of an ordered **list** of the *b* highest batch number values it has accepted. In addition, for each batch number *SEQ* in the list, the USIM stores the highest *IND* value *IND(SEQ)* it has accepted associated with that batch number. Let *SEQ_{LO}* denote the lowest and *SEQ_{MS}* denote the highest batch number in the list.

C.2.1 Protection against wrap around of counter in the USIM

The USIM will not accept arbitrary jumps in batch numbers, but only increases by a value of at most Δ .

Conditions on the choice of Δ :

- (1) Δ shall be sufficiently large so that the MS will not receive any batch number *SEQ* with $SEQ - SEQ_{MS} \geq \Delta$ if the HE/AuC functions correctly.
- (2) In order to prevent that *SEQ_{MS}* ever reaches the maximum batch number value *SEQ_{max}* during the lifetime of the USIM the minimum number of steps SEQ_{max} / Δ required to reach *SEQ_{max}* shall be sufficiently large.

C.2.2 Acceptance rule

When a user authentication request arrives the USIM checks whether the sequence number is acceptable. The sequence number $SQN = SEQ \parallel IND$ is accepted by the USIM if and only if (i) and either (ii) or (iii) hold:

- (i) $SEQ - SEQ_{MS} < \Delta$;
- (ii) *SEQ* is in the list and $IND > IND(SEQ)$;
- (iii) *SEQ* is not in the list and $SEQ > SEQ_{LO}$.

The USIM shall also be able to put a limit *L* on the difference between *SEQ_{MS}* and an accepted batch number *SEQ*. If such a limit is applied then, in addition to the above conditions, the sequence number shall only be accepted by the USIM if $SEQ_{MS} - SEQ < L$.

C.2.3 List update

After a sequence number $SQN = SEQ \parallel IND$ received in a user authentication request has been accepted by the USIM the USIM proceeds as follows:

- (i) Case 1: the batch number *SEQ* is not in the list.
Then the list entry corresponding to *SEQ_{LO}* is deleted, *SEQ* is included in the list, *IND(SEQ)* is set to *IND* and *SEQ_{LO}* and *SEQ_{MS}* are updated;
- (ii) Case 2: the batch number *SEQ* is in the list.
Then *IND(SEQ)* is set to *IND*.

If a sequence number received in a user authentication request is rejected the list remains unaltered.

C.2.4 Notes

1. Using the above list mechanism, it is not required that a previously visited SN/VLR deletes the unused authentication vectors when a user de-registers from the serving network. Retaining the authentication vectors for use when the user returns later may be more efficient as regards signalling when a user abroad switches a lot between two serving networks.
2. The list mechanism may also be used to avoid unjustified rejection of user authentication requests when authentication vectors in two SN/VLRs from different mobility management domains (circuit and packet) are used in an interleaving fashion.
3. When a VLR uses fresh authentication vectors obtained during a previous visit of the user, the USIM can reject them although they have not been used before (because the list size *b* and the limit *L* are finite). Rejection of a sequence number can therefore occur in normal operation, i.e., it is not necessarily caused by (malicious) replay or a database failure.
4. The mechanism presented in this section allows the USIM to exploit knowledge about which authentication

vectors belong to the same batch. It may be assumed that authentication vectors in the same batch are always used in the correct order as they are handled by the same SN/VLR. Consequently, only one sequence number per batch has to be stored.

5. With the exception of SEQ_{MS} , the batch numbers in the list need not be stored in full length if a limit L on the difference between SEQ_{MS} and an accepted batch number is applied and if those entries in the list which would cause the limit L to be exceeded are removed from the list after a new sequence number has been accepted.
6. Condition (2) on Δ means that SEQ_{MS} can reach its maximum value only after a minimum of SEQ_{max}/Δ successful authentications have taken place.
7. There is a dependency of the choice of Δ and the size n of global counter GLC in Annex C.1: Δ shall be chosen larger than 2^n .

Annex D:
Void

Annex E (informative): A Proposal for Layer II Message Format

E.1 Introduction

In Layer II symmetric session keys (to encrypt/decrypt data before sending/after receiving) are distributed by the KACs in each network to the relevant network elements. For example, an AuC_X will normally send sensitive authentication data to VLR_Y and will therefore get a session KS_{XY} key from its KAC_X. Layer II is carried out entirely inside one operator's network.

However, in order to achieve a more consistent overall scheme, in this annex it is suggested to use for Layer II the same mechanism for distributing the keys as in Layer I. This requires the KACs of the different networks to generate and distribute asymmetric key pairs for the network elements of that network. These key-pairs will then be used to transfer the symmetric session keys in the same way as in Layer I.

The public and private key pairs needed for the network entities should be distributed to the entities in a secure way, which is in principle an operation & maintenance task. One way to do this is to distribute the key pairs, along with the necessary crypto-software, to the network entities in the form of chipcards, which can also carry out the necessary computations. Therefore, all that has to be added to the present network entities are chipcard readers with a standardised interface. Thus, on adoption of this proposal, in addition to their present tasks, the network entities would have to:

- Store the symmetric session keys to encrypt/decrypt data before sending/after receiving to/from network entities of other networks (external) and of their own network (internal)
- Encrypt/decrypt MAP messages according to their Mode of protection (cf. 7.4). The necessary computations may be carried out by a chipcard.

In addition to their tasks listed in 7.2.1 of the main document, the KACs would have to:

- Generate and store asymmetric key pairs for network entities in the same network
- Distribute asymmetric key pairs to network entities in the same network.

E.2 Proposed Layer II Message Format

The Layer II messages themselves take the same form as in 7.2 of the main document, where the 'receiving network Y' has to be replaced by 'receiving network entity NE_Y' (or X by NE_X). Further, the Key Distribution Complete message is not needed in Layer II. However, the distribution of the session keys KS_{XY} in network X having initiated the Layer I message exchange should not begin before the Key Distribution Complete Message from the receiving network Y has been received by the KAC_X in Layer I. As soon as a network element of X has received a session key KS_{XY}, it may start enciphering with this key. A similar statement holds if the transported keys are used internally only: In this case, all network elements of X should get the symmetric session key KS_{XX} to be used internal for encryption (marked as decryption key with flag RECEIVE) first; if all network elements have acknowledged that they have recovered these keys, the KAC_X sends the same key again (marked as encryption key with flag SEND). Again, as soon as a network element has received the session key KS_{XX} (with flag SEND), it may start enciphering with this key.

[Note: As for layer I, no assumptions about the transport protocol are made, although IP might be a good candidate.]

E.2.1 Sending a session key for decryption

In order to transport a symmetric session key (marked with flag RECEIVE) with version no. *i* to be used to decrypt received data from network elements of network X in NE_Y, the KAC of Y sends a message containing the following data to NE_Y:

$$E_{PK(NE_Y)} \{ X || NE_Y || RECEIVE || i || KS_{XY}(i) || RND_Y || Text1 || D_{SK(Y)}(Hash(X || NE_Y || RECEIVE || i || KS_{XY}(i) || RND_Y || Text1)) || Text2 \} || Text3$$

After having successfully decrypted the key transport message and having verified the digital signature of the sending network including the hash value, the receiving network entity sends an key installed message to its Key Administration Centre KAC_Y . The message takes the form

$$KEY_INSTALLED || X || NE_Y || RND_Y || i$$

This message can only be sent by the receiving network entity, because only this entity can know about RND_Y . If anything goes wrong, e.g. computing the Hash of $X || NE_Y || RECEIVE || i || KS_{XY}(i) || RND_Y || Text1$ does not yield the expected result, a RESEND message should be sent by NE_Y to KAC_Y in the form

$$RESEND || NE_Y$$

E.2.2 Sending a session key for encryption

In order to transport a symmetric SEND key with version no. i to be used for sending data from NE_X to network elements of network Y , KAC_X sends a message containing the following data to NE_X :

$$E_{PK(NE_X)} \{ NE_X || Y || SEND || i || KS_{XY}(i) || RND_X || Text1 || D_{SK(X)}(Hash(NE_X || Y || SEND || i || KS_{XY}(i) || RND_X || Text1)) || Text2 \} || Text3$$

Annex F (informative): Example uses of AMF

F.1 Support multiple authentication algorithms and keys

A mechanism to support the use of multiple authentication and key agreement algorithms is useful for disaster recovery purposes. AMF may be used to indicate the algorithm and key used to generate a particular authentication vector.

The USIM keeps track of the authentication algorithm and key identifier and updates it according to the value received in an accepted network authentication token.

F.2 Changing list parameters

This mechanism is used in conjunction with the window and list mechanisms described in C.2.

Parameters which may be used to manage a list are the number of entries in a list (the list size) and an upper list on the admissible $SEQ_{MS} - SEQ$ between the highest batch number SEQ_{MS} in the list and an accepted batch number SEQ . A mechanism to change these parameters dynamically is useful since the optimum for these parameters may change over time. AMF is used to indicate the maximum admissible list size or maximum admissible difference $SEQ_{MS} - SEQ$ to be used by the user when verifying the authentication token and deciding whether it is still accepted.

The USIM keeps track of the maximum admissible list size and maximum admissible difference $SEQ_{MS} - SEQ$ and updates them according to the received value providing that $SEQ > SEQ_{MS}$.

F.3 Setting threshold values to restrict the lifetime of cipher and integrity keys

According to section 6.4.3, the USIM contains a mechanism to limit the amount of data that is protected by an access link key set. The AMF field may be used by the operator to set or adjust this limit in the USIM. For instance, there could be two threshold values and the AMF field instructs the USIM to switch between them.

The USIM keeps track of the limit to the key set life time and updates it according to the value received in an accepted network authentication token.

Annex G (informative): Change history

Change history					
TSG SA #	Version	CR	Tdoc SA	New Version	Subject/Comment
S_03	2.0.0			3.0.0	Approved at SA#3 and placed under TSG SA Change Control
S_04	3.0.0	001	SP-99308	3.1.0	Mechanism for data integrity of signalling messages
S_04	3.0.0	002	SP-99308	3.1.0	Description of layer on which ciphering takes place
S_04	3.0.0	003	SP-99308	3.1.0	Conditions on use of authentication information
S_04	3.0.0	004	SP-99308	3.1.0	Modified re-synchronisation procedure for AKA protocol
S_04	3.0.0	005	SP-99308	3.1.0	Sequence number management scheme protecting against USIM lockout
S_04	3.0.0	006	SP-99308	3.1.0	Criteria for Replacing the Authentication "Working Assumption"
S_04	3.0.0	007	SP-99308	3.1.0	Functional modification of Network domain security mechanisms
S_04	3.0.0	008	SP-99308	3.1.0	Cipher key lifetime
S_04	3.0.0	009	SP-99308	3.1.0	Mechanism for user domain security
S_04	3.0.0	010	SP-99308	3.1.0	Replacement of incorrect diagrams
S_04	3.0.0	011	SP-99308	3.1.0	Precision of the status of annex B
S_05	3.1.0	012	SP-99417	3.2.0	Re-organisation of clause 6
S_05	3.1.0	013	SP-99417	3.2.0	Integrity protection procedures
S_05	3.1.0	014	SP-99417	3.2.0	Security of MAP-Based Transmissions
S_05	3.1.0	015	SP-99417	3.2.0	Secure UMTS-GSM Interoperation
S_05	3.1.0	016	SP-99417	3.2.0	Network-wide confidentiality
S_05	3.1.0	017	SP-99417	3.2.0	Authentication management field
S_05	3.1.0	018	SP-99417	3.2.0	Support for window and list mechanisms for sequence number management in authentication scheme
S_05	3.1.0	019	SP-99417	3.2.0	Modification of text for window and list mechanisms
S_05	3.1.0	020	SP-99485	3.2.0	Cipher/integrity key setting
S_05	3.1.0	021	SP99-496	3.2.0	A generalised scheme for sequence number management
S_06	3.2.0	022r1	SP-99584	3.3.0	Refinement of Enhanced User Identity Confidentiality
S_06	3.2.0	025	SP-99584	3.3.0	Length of KSI
S_06	3.2.0	026r1	SP-99584	3.3.0	Mobile IP security
S_06	3.2.0	027r1	SP-99584	3.3.0	Clarification of re-authentication during PS connections
S_06	3.2.0	030	SP-99584	3.3.0	Handling of the MS UEA and UIA capability information
S_06	3.2.0	031	SP-99585	3.3.0	Removal of alternative authentication mechanism described in annex D
S_06	3.2.0	032	SP-99584	3.3.0	Removal of network-wide encryption mechanism from application security section
S_06	3.2.0	033	SP-99584	3.3.0	Interoperation and intersystem handover/change between UTRAN and GSM BSS
S_06	3.2.0	034	SP-99584	3.3.0	Distribution of authentication data within one serving network domain
S_06	3.2.0	035	SP-99584	3.3.0	Authentication and key agreement
S_06	3.2.0	036	SP-99584	3.3.0	Sequence number management
S_06	3.2.0	037r1	SP-99584	3.3.0	Authentication and key agreement
S_06	3.2.0	038	SP-99584	3.3.0	Clarification on system architecture
S_06	3.2.0	039	SP-99584	3.3.0	Updated definitions and abbreviations
S_06	3.2.0	040	SP-99584	3.3.0	An authentication failure report mechanism from SN to HE
-	3.3.0	-	-	3.3.1	Editorial clean-up by MCC

History

Document history		
V3.3.1	January 2000	Publication