

ETSI TS 131 116 V7.0.0 (2007-06)

Technical Specification

**Digital cellular telecommunications system (Phase 2+);
Universal Mobile Telecommunications System (UMTS);
Remote APDU Structure for (Universal) Subscriber
Identity Module (U)SIM Toolkit applications
(3GPP TS 31.116 version 7.0.0 Release 7)**



Reference

RTS/TSGC-0631116v700

Keywords

GSM, UMTS

ETSI

650 Route des Lucioles
F-06921 Sophia Antipolis Cedex - FRANCE

Tel.: +33 4 92 94 42 00 Fax: +33 4 93 65 47 16

Siret N° 348 623 562 00017 - NAF 742 C
Association à but non lucratif enregistrée à la
Sous-Préfecture de Grasse (06) N° 7803/88

Important notice

Individual copies of the present document can be downloaded from:

<http://www.etsi.org>

The present document may be made available in more than one electronic version or in print. In any case of existing or perceived difference in contents between such versions, the reference version is the Portable Document Format (PDF). In case of dispute, the reference shall be the printing on ETSI printers of the PDF version kept on a specific network drive within ETSI Secretariat.

Users of the present document should be aware that the document may be subject to revision or change of status. Information on the current status of this and other ETSI documents is available at

<http://portal.etsi.org/tb/status/status.asp>

If you find errors in the present document, please send your comment to one of the following services:

http://portal.etsi.org/chaicor/ETSI_support.asp

Copyright Notification

No part may be reproduced except as authorized by written permission.
The copyright and the foregoing restriction extend to reproduction in all media.

© European Telecommunications Standards Institute 2007.
All rights reserved.

DECTTM, **PLUGTESTS**TM and **UMTS**TM are Trade Marks of ETSI registered for the benefit of its Members.
TIPHONTM and the **TIPHON logo** are Trade Marks currently being registered by ETSI for the benefit of its Members.
3GPPTM is a Trade Mark of ETSI registered for the benefit of its Members and of the 3GPP Organizational Partners.

Intellectual Property Rights

IPRs essential or potentially essential to the present document may have been declared to ETSI. The information pertaining to these essential IPRs, if any, is publicly available for **ETSI members and non-members**, and can be found in ETSI SR 000 314: "*Intellectual Property Rights (IPRs); Essential, or potentially Essential, IPRs notified to ETSI in respect of ETSI standards*", which is available from the ETSI Secretariat. Latest updates are available on the ETSI Web server (<http://webapp.etsi.org/IPR/home.asp>).

Pursuant to the ETSI IPR Policy, no investigation, including IPR searches, has been carried out by ETSI. No guarantee can be given as to the existence of other IPRs not referenced in ETSI SR 000 314 (or the updates on the ETSI Web server) which are, or may be, or may become, essential to the present document.

Foreword

This Technical Specification (TS) has been produced by ETSI 3rd Generation Partnership Project (3GPP).

The present document may refer to technical specifications or reports using their 3GPP identities, UMTS identities or GSM identities. These should be interpreted as being references to the corresponding ETSI deliverables.

The cross reference between GSM, UMTS, 3GPP and ETSI identities can be found under <http://webapp.etsi.org/key/queryform.asp>.

Contents

| | |
|--|-----------|
| Intellectual Property Rights | 2 |
| Foreword..... | 2 |
| Foreword..... | 4 |
| Introduction | 4 |
| 1 Scope | 5 |
| 2 References | 5 |
| 3 Definitions and abbreviations..... | 5 |
| 4 Remote APDU Format | 6 |
| 4.1 Remote command coding..... | 6 |
| 4.2 Response coding..... | 6 |
| 4.2.1 (U)SIM specific behaviour for Response Packets (Using SMS-PP)..... | 6 |
| 4.2.2 Void | 6 |
| 5 Remote File Management (RFM) | 6 |
| 5.1 SIM Remote File Management | 6 |
| 5.2 USIM Remote File Management..... | 7 |
| 5.3 UICC Shared File System Remote File Management | 7 |
| 5.4 ISIM Remote File Management | 7 |
| 6 Remote Applet Management..... | 7 |
| 6.1 SIM File System Access Domain Parameter..... | 7 |
| 6.1.1 SIM Access Mechanism | 8 |
| 7 Additional command for push..... | 9 |
| 7.1 USIM specific behaviour for responses using SMS-PP | 9 |
| Annex A (informative): Change History | 10 |
| History | 11 |

Foreword

This Technical Specification has been produced by the 3rd Generation Partnership Project (3GPP).

The contents of the present document are subject to continuing work within the TSG and may change following formal TSG approval. Should the TSG modify the contents of the present document, it will be re-released by the TSG with an identifying change of release date and an increase in version number as follows:

Version x.y.z

where:

- x the first digit:
 - 1 presented to TSG for information;
 - 2 presented to TSG for approval;
 - 3 or greater indicates TSG approved document under change control.
- y the second digit is incremented for all changes of substance, i.e. technical enhancements, corrections, updates, etc.
- z the third digit is incremented when editorial only changes have been incorporated in the document.

Introduction

The present document is the result of a split of TS 23.048 Release 5 between the generic part and the bearers specific application. The generic part has been transferred to SCP. The present document is the bearers specific part.

1 Scope

The present document defines the remote management of files and applets on the SIM/USIM/ISIM.

It describes the APDU format for remote management.

Furthermore the document specifies:

- a set of commands coded according to this APDU structure and used in the remote file management on the SIM/USIM specified in TS 51.011 [1], TS 31.101 [2], TS 31.102 [3], TS 31.103 [6].
- a set of commands coded according to this APDU structure and used in the remote applet management on the SIM/USIM. This is based on ETSI TS 102 226 [4].

The remote APDU structure for SIM/USIM/ISIM applications shall comply with the one defined in ETSI TS 102 226 [4]. The present document only contains additional requirements or explicit limitations for SIM/USIM/ISIM applications.

2 References

The following documents contain provisions which, through reference in this text, constitute provisions of the present document.

- References are either specific (identified by date of publication and/or edition number or version number) or non-specific.
- For a specific reference, subsequent revisions do not apply.
- For a non-specific reference, the latest version applies. In the case of a reference to a 3GPP document (including a GSM document), a non-specific reference implicitly refers to the latest version of that document *in the same Release as the present document*.

- [1] 3GPP TS 51.011 Release 4: "Specification of the Subscriber Identity Module - Mobile Equipment (SIM-ME) interface".
- [2] 3GPP TS 31.101: "UICC-Terminal Interface; Physical and Logical Characteristics".
- [3] 3GPP TS 31.102: "Characteristics of the USIM Application".
- [4] ETSI TS 102 226 Release 7: "Smart Cards; Remote APDU structure for UICC based applications".
- [5] ISO/IEC 7816-4: "Information technology - Identification cards - Integrated circuit cards, Part 4: Organization, security and commands for interchange".
- [6] 3GPP TS 31.103: "Characteristics of the IP Multimedia Services Identity Module (ISIM) application".

3 Definitions and abbreviations

For the purposes of the present document, the abbreviations, terms and definitions given in ETSI TS 102 226 [4] apply.

4 Remote APDU Format

4.1 Remote command coding

The SIM/USIM/ISIM Remote command coding shall comply with the Remote command coding of ETSI TS 102 226 [4].

4.2 Response coding

The SIM/USIM/ISIM Response coding shall comply with the Response coding of ETSI TS 102 226 [4], added features are defined below.

4.2.1 (U)SIM specific behaviour for Response Packets (Using SMS-PP)

If PoR is not requested, no data shall be returned by the (U)SIM's RE/RA and the (U)SIM's RE/RA shall indicate to the terminal to issue a RP-ACK.

If PoR is requested, data shall be returned by the (U)SIM's RE/RA. The (U)SIM's RE/RA shall indicate to the terminal to issue:

- a RP-ACK if the response status code octet is '00' or,
- a RP-ERROR if there is a security error of some kind (see table 5).

The data returned by the (U)SIM is the complete Response Packet to be included in the User Data part of the SMS-DELIVER-REPORT.

Because the (U)SIM is unable to indicate to the Terminal that the TP-UDHI bit is to be set, the Sending Entity receiving the Response Packet shall expect the UDH structure in any event.

If a proof of Receipt is required by the sending entity, the Additional Response Data sent by the Remote Management Application shall be formatted according to ETSI TS 102 226 [4].

4.2.2 Void

5 Remote File Management (RFM)

5.1 SIM Remote File Management

Command and Response formats are defined in ETSI TS 102 226 [4]. Nevertheless, the list of commands defined in ETSI TS 102 226 [4] for Remote File Management does not apply for SIM application. All the SIM Remote File Management commands are defined below.

The standardised commands are listed in table 5.1. The commands are as defined in TS 51.011 [1], except that the SELECT command is extended from the one in TS 51.011 [1] to include "SELECT by path" as defined in ISO/IEC 7816-4 [6].

Table 5.1: SIM Remote File Management Commands

| Operational command |
|---------------------|
| SELECT |
| UPDATE BINARY |
| UPDATE RECORD |
| SEEK |
| INCREASE |
| VERIFY CHV |
| CHANGE CHV |
| DISABLE CHV |
| ENABLE CHV |
| UNBLOCK CHV |
| INVALIDATE |
| REHABILITATE |
| READ BINARY |
| READ RECORD |

To retrieve the Response parameters/data of a case 4 command the GET RESPONSE command defined in TS 51.011 [1] shall be issued (Class Byte is 'A0').

The GET RESPONSE and any case 2 command (i.e. READ BINARY, READ RECORD) shall only occur once in a command string and, if present, shall be the last command in the string. The Response Data shall be placed in the Additional Response Data element of the Response Packet.

5.2 USIM Remote File Management

USIM Remote File Management shall comply with ETSI TS 102 226 [4].

The standardised commands are listed in ETSI TS 102 226 [4].

5.3 UICC Shared File System Remote File Management

UICC Shared File System Remote File Management shall comply with ETSI TS 102 226 [4].

The standardised commands are listed in ETSI TS 102 226 [4].

5.4 ISIM Remote File Management

ISIM Remote File Management shall comply with ETSI TS 102 226 [4].

The standardised commands are listed in ETSI TS 102 226 [4].

6 Remote Applet Management

SIM/USIM Remote Applet Management shall comply with ETSI TS 102 226 [4], added features are defined below.

6.1 SIM File System Access Domain Parameter

This parameter indicates the mechanism used to control the applet instance access to the SIM File System. It is a parameter of the INSTALL [for install] command described in ETSI TS 102 226 [4].

This parameter shall be used only if the "SIM File Access and Toolkit Application Specific Parameters" TLV object (Tag 'CA') is present.

| Value | Name | Support | ADD length |
|--------------|----------------------|----------|------------|
| '00' | See TS 102 226 [4] | - | - |
| '01' | SIM access mechanism | Optional | 2 |
| '02' to 'FF' | See TS 102 226 [4] | - | - |

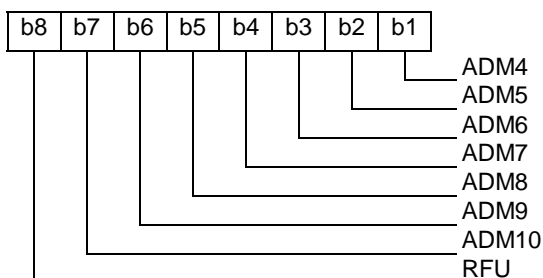
6.1.1 SIM Access Mechanism

This mechanism shall be used, if supported, by the framework if the Access Domain Parameter value is '01'. It shall use the Access Domain Data passed at applet instantiation to define the access conditions fulfilled while the toolkit applet is running.

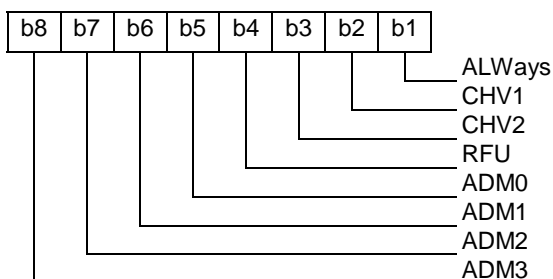
The APDU Access Domain Data is a bit map combination of the file access condition levels described in TS 51.011 [1]. When the bit is set the associated Access Condition is granted.

The APDU Access Domain Data is coded as follows:

Byte 1:



Byte 2:



EXAMPLE: Possible combinations of fulfilled Access Conditions are shown below:

| ADD value | Applet access condition fulfilled |
|------------------|---|
| '00 00' | No access |
| '00 01' | ALWays |
| '00 02' | CHV1 |
| '00 03' | ALWays and CHV1 |
| '00 04' | CHV2 |
| '00 05' | ALWays and CHV2 |
| '00 06' | CHV1 and CHV2 |
| : | : |
| '00 10' | ADM0 |
| : | : |
| '00 20' | ADM1 |
| : | : |
| '00 22' | ADM1 and CHV1 |
| : | : |
| '01 00' | ADM4 |
| : | : |
| '40 00' | ADM10 |
| : | : |
| '41 37' | ADM10 and ADM4 and ADM1 and ADM0 and CHV2 and CHV1 and ALWays |
| : | : |

7 Additional command for push

The PUSH command behaviour shall comply with ETSI TS 102 226 [4]. The specific behaviour of USIM Toolkit applications is stated below.

7.1 USIM specific behaviour for responses using SMS-PP

The behaviour for responses shall comply with ETSI TS 102 226 [4].

As the processing of the PUSH command may result in proactive commands being issued, the PUSH command result may be sent back in the additional response data of a response packet using SMS-SUBMIT.

Annex A (informative): Change History

| Meeting / Date | Plenary doc | WG doc | CR | Rev | Cat | Changes | New |
|----------------|-------------|-----------|-----|-----|-----|--|-------|
| TP-16 | - | - | - | - | - | T#16 approved the specification for Rel-6 | 6.0.0 |
| TP-17 | TP-020209 | - | 001 | - | F | USIM specific behaviour for Response Packets (Using SMS-PP) | 6.1.0 |
| TP-18 | TP-020284 | - | 002 | - | F | Alignment with TS 23.048 Release 5: Correction of the Specific behaviour for Response Packets (Using SMS-PP) | 6.2.0 |
| TP-19 | TP-030025 | - | 003 | - | A | Correction on behaviour for Response Packet | 6.3.0 |
| TP-23 | TP-040027 | - | 004 | - | C | Clarification on the usage of SIM Remote File Management commands | 6.4.0 |
| TP-25 | TP-040185 | - | 006 | - | B | Alignment with TS 102 226 V6.8.0 | 6.5.0 |
| TP-26 | TP-040261 | - | 007 | - | F | Correction of non-specific references to SCP documents | 6.6.0 |
| TP-27 | TP-050021 | T3-050164 | 008 | - | F | Correction of reference to TS 102226 | 6.7.0 |
| TP-27 | TP-050021 | T3-050167 | 009 | - | F | USIM specific behaviour for PUSH mechanism using SMS-PP | 6.7.0 |
| CP-28 | CP-050136 | C6-050477 | 011 | - | F | ISO/IEC 7816-Series Revision | 6.8.0 |
| CP-28 | CP-050139 | C6-050447 | 010 | - | B | Introduction of an explicit description of the ISIM RFM mechanism | 6.8.0 |
| CP-36 | CP-070296 | C6-070325 | 012 | - | F | Correction of the reference to ETSI TS 102 226 | 7.0.0 |
| | | | | | | | |

History

| Document history | | |
|-------------------------|-----------|-------------|
| V7.0.0 | June 2007 | Publication |
| | | |
| | | |
| | | |
| | | |