

ETSI TS 129 517 V16.2.0 (2020-11)



**5G;
5G System;
Application Function (AF) event exposure service;
Stage 3
(3GPP TS 29.517 version 16.2.0 Release 16)**



Reference

RTS/TSGC-0329517vg20

Keywords

5G

ETSI

650 Route des Lucioles
F-06921 Sophia Antipolis Cedex - FRANCE

Tel.: +33 4 92 94 42 00 Fax: +33 4 93 65 47 16

Siret N° 348 623 562 00017 - NAF 742 C
Association à but non lucratif enregistrée à la
Sous-Préfecture de Grasse (06) N° 7803/88

Important notice

The present document can be downloaded from:

<http://www.etsi.org/standards-search>

The present document may be made available in electronic versions and/or in print. The content of any electronic and/or print versions of the present document shall not be modified without the prior written authorization of ETSI. In case of any existing or perceived difference in contents between such versions and/or in print, the prevailing version of an ETSI deliverable is the one made publicly available in PDF format at www.etsi.org/deliver.

Users of the present document should be aware that the document may be subject to revision or change of status.

Information on the current status of this and other ETSI documents is available at

<https://portal.etsi.org/TB/ETSIDeliverableStatus.aspx>

If you find errors in the present document, please send your comment to one of the following services:

<https://portal.etsi.org/People/CommiteeSupportStaff.aspx>

Copyright Notification

No part may be reproduced or utilized in any form or by any means, electronic or mechanical, including photocopying and microfilm except as authorized by written permission of ETSI.

The content of the PDF version shall not be modified without the written authorization of ETSI.

The copyright and the foregoing restriction extend to reproduction in all media.

© ETSI 2020.

All rights reserved.

DECT™, **PLUGTESTS™**, **UMTS™** and the ETSI logo are trademarks of ETSI registered for the benefit of its Members.

3GPP™ and **LTE™** are trademarks of ETSI registered for the benefit of its Members and of the 3GPP Organizational Partners.

oneM2M™ logo is a trademark of ETSI registered for the benefit of its Members and of the oneM2M Partners.

GSM® and the GSM logo are trademarks registered and owned by the GSM Association.

Intellectual Property Rights

Essential patents

IPRs essential or potentially essential to normative deliverables may have been declared to ETSI. The information pertaining to these essential IPRs, if any, is publicly available for **ETSI members and non-members**, and can be found in ETSI SR 000 314: "*Intellectual Property Rights (IPRs); Essential, or potentially Essential, IPRs notified to ETSI in respect of ETSI standards*", which is available from the ETSI Secretariat. Latest updates are available on the ETSI Web server (<https://ipr.etsi.org/>).

Pursuant to the ETSI IPR Policy, no investigation, including IPR searches, has been carried out by ETSI. No guarantee can be given as to the existence of other IPRs not referenced in ETSI SR 000 314 (or the updates on the ETSI Web server) which are, or may be, or may become, essential to the present document.

Trademarks

The present document may include trademarks and/or tradenames which are asserted and/or registered by their owners. ETSI claims no ownership of these except for any which are indicated as being the property of ETSI, and conveys no right to use or reproduce any trademark and/or tradename. Mention of those trademarks in the present document does not constitute an endorsement by ETSI of products, services or organizations associated with those trademarks.

Legal Notice

This Technical Specification (TS) has been produced by ETSI 3rd Generation Partnership Project (3GPP).

The present document may refer to technical specifications or reports using their 3GPP identities. These shall be interpreted as being references to the corresponding ETSI deliverables.

The cross reference between 3GPP and ETSI identities can be found under <http://webapp.etsi.org/key/queryform.asp>.

Modal verbs terminology

In the present document "**shall**", "**shall not**", "**should**", "**should not**", "**may**", "**need not**", "**will**", "**will not**", "**can**" and "**cannot**" are to be interpreted as described in clause 3.2 of the [ETSI Drafting Rules](#) (Verbal forms for the expression of provisions).

"**must**" and "**must not**" are **NOT** allowed in ETSI deliverables except when used in direct citation.

Contents

Intellectual Property Rights	2
Legal Notice	2
Modal verbs terminology.....	2
Foreword.....	5
1 Scope	7
2 References	7
3 Definitions of terms, symbols and abbreviations	8
3.1 Terms.....	8
3.2 Symbols.....	8
3.3 Abbreviations	8
4 Naf_EventExposure Service.....	9
4.1 Service Description	9
4.1.1 Overview	9
4.1.2 Service Architecture	9
4.1.3 Network Functions.....	10
4.1.3.1 Application Function (AF).....	10
4.1.3.2 NF Service Consumers.....	10
4.2 Service Operations	10
4.2.1 Introduction.....	10
4.2.2 Naf_EventExposure_Subscribe service operation	11
4.2.2.1 General	11
4.2.2.2 Creating a new subscription	11
4.2.2.3 Modifying an existing subscription.....	13
4.2.3 Naf_EventExposure_Unsubscribe service operation	14
4.2.3.1 General	14
4.2.3.2 Unsubscription from event notifications	14
4.2.4 Naf_EventExposure_Notify service operation	15
4.2.4.1 General.....	15
4.2.4.2 Notification about subscribed events	15
5 Naf_EventExposure Service API.....	16
5.1 Introduction	16
5.2 Usage of HTTP.....	16
5.2.1 General.....	16
5.2.2 HTTP standard headers.....	16
5.2.2.1 General	16
5.2.2.2 Content type	17
5.2.3 HTTP custom headers.....	17
5.2.3.1 General	17
5.3 Resources	17
5.3.1 Resource Structure.....	17
5.3.2 Resource: Application Event Subscriptions.....	18
5.3.2.1 Description	18
5.3.2.2 Resource definition	18
5.3.2.3 Resource Standard Methods.....	18
5.3.2.3.1 POST	18
5.3.3 Resource: Individual Application Event Subscription	19
5.3.3.1 Description	19
5.3.3.2 Resource definition	19
5.3.3.3 Resource Standard Methods.....	19
5.3.3.3.1 GET	19
5.3.3.3.2 PUT	19
5.3.3.3.3 DELETE.....	20
5.4 Custom Operations without associated resources.....	20

5.5	Notifications	21
5.5.1	General	21
5.5.2	Application Event Notification	21
5.5.2.1	Description	21
5.5.2.2	Target URI	21
5.5.2.3	Standard Methods	21
5.5.2.3.1	POST	21
5.6	Data Model	22
5.6.1	General	22
5.6.2	Structured data types	23
5.6.2.1	Introduction	23
5.6.2.2	Type AfEventExposureSubsc	23
5.6.2.3	Type AfEventExposureNotif	24
5.6.2.4	Type EventsSubs	24
5.6.2.5	Type EventFilter	25
5.6.2.6	Type AfEventNotification	26
5.6.2.7	Type ServiceExperienceInfoPerApp	26
5.6.2.8	Type ServiceExperienceInfoPerFlow	27
5.6.2.9	Type SvcExperience	27
5.6.2.10	Type UeMobilityCollection	27
5.6.2.11	Type UeCommunicationCollection	27
5.6.2.12	Type UeTrajectoryCollection	28
5.6.2.13	Type CommunicationCollection	28
5.6.2.14	Type ExceptionInfo	28
5.6.3	Simple data types and enumerations	28
5.6.3.1	Introduction	28
5.6.3.2	Simple data types	28
5.6.3.3	Enumeration: AfEvent	29
5.7	Error handling	29
5.7.1	General	29
5.7.2	Protocol Errors	29
5.7.3	Application Errors	29
5.8	Feature negotiation	29
5.9	Security	30
Annex A (normative): OpenAPI specification		31
A.1	General	31
A.2	Naf_EventExposure API	31
Annex B (informative): Change history		38
History		39

Foreword

This Technical Specification has been produced by the 3rd Generation Partnership Project (3GPP).

The contents of the present document are subject to continuing work within the TSG and may change following formal TSG approval. Should the TSG modify the contents of the present document, it will be re-released by the TSG with an identifying change of release date and an increase in version number as follows:

Version x.y.z

where:

- x the first digit:
 - 1 presented to TSG for information;
 - 2 presented to TSG for approval;
 - 3 or greater indicates TSG approved document under change control.
- y the second digit is incremented for all changes of substance, i.e. technical enhancements, corrections, updates, etc.
- z the third digit is incremented when editorial only changes have been incorporated in the document.

In the present document, certain modal verbs have the following meanings:

shall indicates a mandatory requirement to do something

shall not indicates an interdiction (prohibition) to do something

NOTE 1: The constructions "shall" and "shall not" are confined to the context of normative provisions, and do not appear in Technical Reports.

NOTE 2: The constructions "must" and "must not" are not used as substitutes for "shall" and "shall not". Their use is avoided insofar as possible, and they are not used in a normative context except in a direct citation from an external, referenced, non-3GPP document, or so as to maintain continuity of style when extending or modifying the provisions of such a referenced document.

should indicates a recommendation to do something

should not indicates a recommendation not to do something

may indicates permission to do something

need not indicates permission not to do something

NOTE 3: The construction "may not" is ambiguous and is not used in normative elements. The unambiguous constructions "might not" or "shall not" are used instead, depending upon the meaning intended.

can indicates that something is possible

cannot indicates that something is impossible

NOTE 4: The constructions "can" and "cannot" shall not to be used as substitutes for "may" and "need Not".

will indicates that something is certain or expected to happen as a result of action taken by an agency the behaviour of which is outside the scope of the present document

will not indicates that something is certain or expected not to happen as a result of action taken by an agency the behaviour of which is outside the scope of the present document

might indicates a likelihood that something will happen as a result of action taken by some agency the behaviour of which is outside the scope of the present document

might not indicates a likelihood that something will not happen as a result of action taken by some agency the behaviour of which is outside the scope of the present document

In addition:

is (or any other verb in the indicative mood) indicates a statement of fact

is not (or any other negative verb in the indicative mood) indicates a statement of fact

NOTE 5: The constructions "is" and "is not" do not indicate requirements.

1 Scope

The present document specifies the stage 3 protocol and data model for the Application Function Event Exposure Service of the 5G System. It provides stage 3 protocol definitions, message flows and specifies the API for the Naf_EventExposure service.

The 5G System stage 2 architecture and the procedures are specified in 3GPP TS 23.501 [2], 3GPP TS 23.502 [3], and 3GPP TS 23.288 [4].

The Technical Realization of the Service Based Architecture and the Principles and Guidelines for Services Definition are specified in 3GPP TS 29.500 [5] and 3GPP TS 29.501 [6].

The Application Function Event Exposure Service is provided by the Application Function (AF). This service exposes service experience events observed at the AF.

2 References

The following documents contain provisions which, through reference in this text, constitute provisions of the present document.

- References are either specific (identified by date of publication, edition number, version number, etc.) or non-specific.
- For a specific reference, subsequent revisions do not apply.
- For a non-specific reference, the latest version applies. In the case of a reference to a 3GPP document (including a GSM document), a non-specific reference implicitly refers to the latest version of that document *in the same Release as the present document*.

- [1] 3GPP TR 21.905: "Vocabulary for 3GPP Specifications".
- [2] 3GPP TS 23.501: "System Architecture for the 5G System; Stage 2".
- [3] 3GPP TS 23.502: "Procedures for the 5G System; Stage 2".
- [4] 3GPP TS 23.288: "Architecture enhancements for 5G System (5GS) to support network data analytics services".
- [5] 3GPP TS 29.500: "5G System; Technical Realization of Service Based Architecture; Stage 3".
- [6] 3GPP TS 29.501: "5G System; Principles and Guidelines for Services Definition; Stage 3".
- [7] IETF RFC 7540: "Hypertext Transfer Protocol Version 2 (HTTP/2)".
- [8] OpenAPI: "OpenAPI 3.0.0 Specification", <https://github.com/OAI/OpenAPI-Specification/blob/master/versions/3.0.0.md>.
- [9] IETF RFC 8259: "The JavaScript Object Notation (JSON) Data Interchange Format".
- [10] IETF RFC 7807: "Problem Details for HTTP APIs".
- [11] 3GPP TR 21.900: "Technical Specification Group working methods".
- [12] 3GPP TS 29.523: "5G System; Policy Control Event Exposure Service; Stage 3".
- [13] 3GPP TS 29.571: "5G System; Common Data Types for Service Based Interfaces Stage 3".
- [14] 3GPP TS 33.501: "Security architecture and procedures for 5G system".
- [15] IETF RFC 6749: "The OAuth 2.0 Authorization Framework".
- [16] 3GPP TS 29.510: "5G System; Network Function Repository Services; Stage 3".

- [17] 3GPP TS 29.122: "T8 reference point for northbound Application Programming Interfaces (APIs)".
- [18] 3GPP TS 29.514: "5G System; Policy Authorization Service; Stage 3".
- [19] 3GPP TS 29.520: "5G System; Network Data Analytics Services; Stage 3".
- [20] IETF RFC 5246, "The Transport Layer Security (TLS) Protocol Version 1.2".
- [21] IETF RFC 7230: "Hypertext Transfer Protocol (HTTP/1.1): Message Syntax and Routing".
- [22] IETF RFC 7231: "Hypertext Transfer Protocol (HTTP/1.1): Semantics and Content".
- [23] IETF RFC 7232: "Hypertext Transfer Protocol (HTTP/1.1): Conditional Requests".
- [24] IETF RFC 7233: "Hypertext Transfer Protocol (HTTP/1.1): Range Requests".
- [25] IETF RFC 7234: "Hypertext Transfer Protocol (HTTP/1.1): Caching".
- [26] IETF RFC 7235: "Hypertext Transfer Protocol (HTTP/1.1): Authentication".
- [27] 3GPP TS 29.503: "5G System; Unified Data Management Services; Stage 3".

3 Definitions of terms, symbols and abbreviations

3.1 Terms

For the purposes of the present document, the terms given in 3GPP TR 21.905 [1] and the following apply. A term defined in the present document takes precedence over the definition of the same term, if any, in 3GPP TR 21.905 [1].

(None)

3.2 Symbols

For the purposes of the present document, the following symbols apply:

(None)

3.3 Abbreviations

For the purposes of the present document, the abbreviations given in 3GPP TR 21.905 [1] and the following apply. An abbreviation defined in the present document takes precedence over the definition of the same abbreviation, if any, in 3GPP TR 21.905 [1].

AF	Application Function
DNAI	DN Access Identifier
GPSI	Generic Public Subscription Identifier
NEF	Network Exposure Function
NF	Network Function
NWDAF	Network Data Analytics Function
SUPI	Subscription Permanent Identifier
URI	Uniform Resource Identifier

4 Naf_EventExposure Service

4.1 Service Description

4.1.1 Overview

The Application Function Exposure Service, as defined in 3GPP TS 23.502 [3] and 3GPP TS 23.288 [4], is provided by the Application Function (AF).

This service:

- allows NF service consumers to subscribe, modify and unsubscribe for application events; and
- notifies NF service consumers with a corresponding subscription about observed events on the AF.

The types of observed events include:

- Service data of a application;
- UE mobility information;
- UE communication information; and
- Exceptions information.

When the event occurs, to which the NF service consumer has subscribed to, the AF reports the requested information to the NF service consumer based on the event reporting information definition requested by the NF service consumer (see 3GPP TS 23.502 [3]).

4.1.2 Service Architecture

The Data Analytics Architecture is defined in 3GPP TS 23.288 [4].

The Application Function Exposure Service (Naf_EventExposure) is part of the Naf service-based interface exhibited by the Application Function (AF).

The known NF service consumers of the Naf_EventExposure service are the Network Exposure Function (NEF) and the Network Data Analytics Function (NWDAF).

The Naf_EventExposure service is provided by the AF and consumed by the NEF and the NWDAF, as shown in figure 4.1.2-1 for the SBI representation model and in figure 4.1.2-2 for reference point representation model.

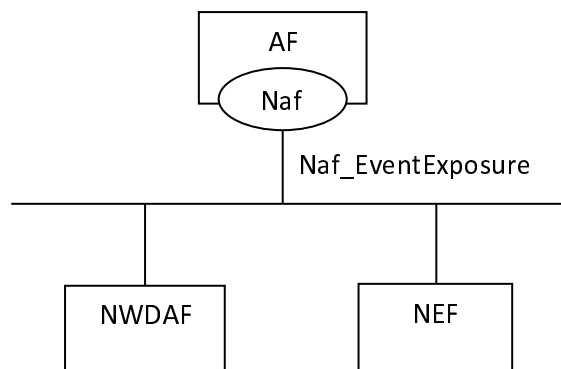


Figure 4.1.2-1: Naf_EventExposure service Architecture, SBI representation

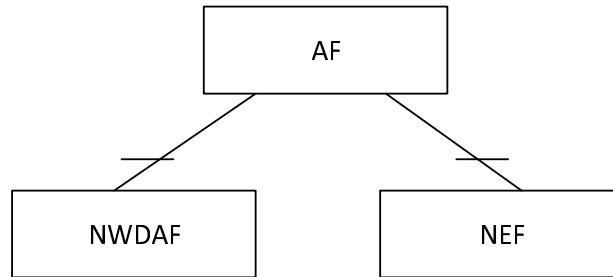


Figure 4.1.2-2: Naf_EventExposure service Architecture, reference point representation

4.1.3 Network Functions

4.1.3.1 Application Function (AF)

The AF is a functional element that provides service or application related information to the NF service consumer.

The AF allows NF consumers to subscribe to and unsubscribe from periodic notification and/or notification when subscribed event is detected.

4.1.3.2 NF Service Consumers

The Network Data Analytics Function (NWDAF):

- supports (un)subscribing to notification of subscribed event(s) from the AF;
- supports receiving the notification of subscribed event(s) from the AF.

The Network Exposure Function (NEF):

- supports (un)subscribing to notification of service experience information from the AF;
- supports receiving the notification of subscribed event(s) from the AF.

4.2 Service Operations

4.2.1 Introduction

Service operations defined for the Naf_EventExposure Service are shown in table 4.2.1-1.

Table 4.2.1-1: Naf_EventExposure Service Operations

Service Operation Name	Description	Initiated by
Naf_EventExposure_Subscribe	This service operation is used by an NF service consumer to subscribe to, or modify a subscription in the AF for event notifications on a specified application related event for one or more UE(s) or any UE.	NF Consumer (NWDAF, NEF)
Naf_EventExposure_Unsubscribe	This service operation is used by an NF service consumer to unsubscribe from event notifications.	NF Consumer (NWDAF, NEF)
Naf_EventExposure_Notify	This service operation is used by the AF to report application related event(s) to the NF service consumer which has subscribed to the event report service.	AF

4.2.2 Naf_EventExposure_Subscribe service operation

4.2.2.1 General

This service operation is used by an NF service consumer to subscribe for event notifications on specific event(s), or to modify an existing subscription.

The following are the types of events for which a subscription can be made:

- Service data for an application;
- UE mobility information;
- UE communication information; and
- Exceptions information.

The following procedures using the Naf_EventExposure_Subscribe service operation are supported:

- creating a new subscription;
- modifying an existing subscription.

4.2.2.2 Creating a new subscription

Figure 4.2.2.2-1 illustrates the creation of a subscription.

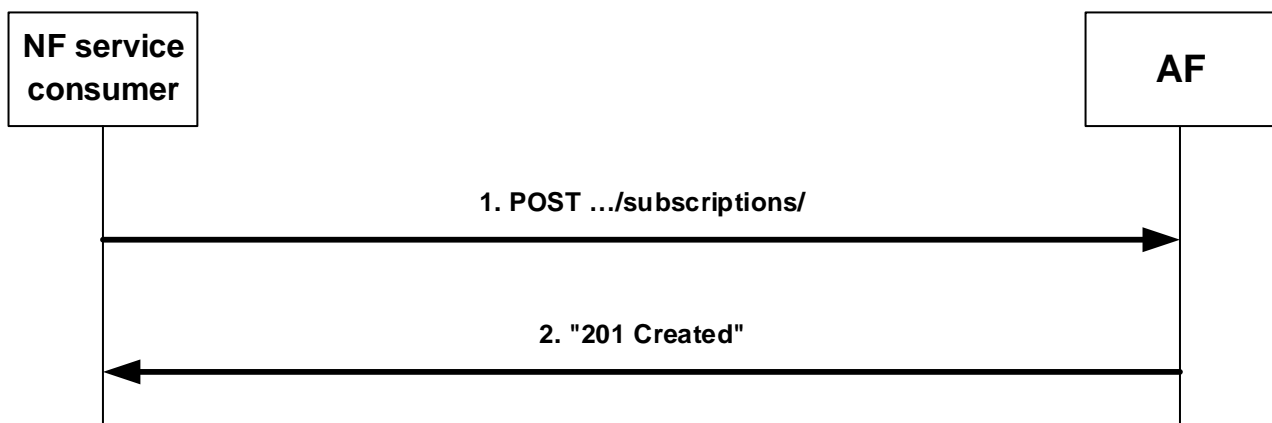


Figure 4.2.2.2-1: Creation of a subscription

To subscribe to event notifications, the NF service consumer shall send an HTTP POST request to the AF with: "{apiRoot}/naf-eventexposure/<apiVersion>/subscriptions/" as request URI as shown in step 1 of figure 4.2.2.2-1, and the "AfEventExposureSubsc" data structure as request body.

The "AfEventExposureSubsc" data structure shall include:

- description of subscribed event information as "eventsSubs" attribute by using one or more "EventsSubs" data;
- description of the event reporting information as "eventsRepInfo" attribute;
- a URI where to receive the requested notifications as "notifUri" attribute;
- a Notification Correlation Identifier assigned by the NF service consumer for the requested notifications as "notifId" attribute.

The "EventsSubs" data shall include:

- a event to subscribe as a "event" attribute; and
- event filter information as "eventFilter" attribute associated with the event.

The "eventsRepInfo" attribute may include:

- event notification method (periodic, one time, on event detection) as "notifMethod" attribute;
- Maximum Number of Reports as "maxReportNbr" attribute;
- Monitoring Duration as "monDur" attribute;
- repetition period for periodic reporting as "repPeriod" attribute;
- immediate reporting indication as "immRep" attribute;
- sampling ratio as "sampRatio" attribute; and/or
- group reporting guard time as "grpRepTime" attribute.

The "eventFilter" shall include:

- identification of target UE(s) to which the subscription applies via :
 - 1) identification of individual UE(s) via "gpsis" attribute or "supis" attribute; or
 - 2) identification of group(s) of UE(s) via "exterGroupIds" attribute or "interGroupIds" attribute; or
 - 3) identification of any UE via "anyUeInd" attribute.

Depending on the event type:

- if the feature "ServiceExperience" is supported and the event is "SVC_EXPERIENCE", the "eventFilter" attribute may provide:
 - 1) identification of application to which the subscription applies via "appIds" attribute;
 - 2) an area of interest via "locArea" attribute.
- if the feature "Exceptions" is supported and the event is "EXCEPTIONS", the "eventFilter" attribute may provide:
 - 1) identification of application to which the subscription applies via "appIds" attribute;
 - 2) an area of interest via "locArea" attribute;
- if the feature "UeCommunication" is supported and the event is "UE_COMM", the "eventFilter" attribute may provide:
 - 1) identification of application to which the subscription applies via "appIds" attribute;
 - 2) an area of interest via "locArea" attribute.
- if the feature "UeMobility" is supported and the event is "UE_MOBILITY", the "eventFilter" attribute may provide:
 - 1) identification of application to which the subscription applies via "appIds" attribute;
 - 2) an area of interest via "locArea" attribute.

If the AF cannot successfully fulfil the received HTTP POST request due to the internal error or an error in the HTTP POST request, the AF shall send the HTTP error response as specified in subclause 5.7.

Upon successful reception of the HTTP POST request with "{apiRoot}/naf-eventexposure/<apiVersion>/subscriptions/" as request URI and "AfEventExposureSubsc" data structure as request body, the AF shall create a new "Individual Application Event Subscription" resource, shall store the subscription and shall send a HTTP "201 Created" response as shown in step 2 of figure 4.2.2.2-1. The AF shall include in the "201 Created" response:

- a Location header field; and
- an "AfEventExposureSubsc" data type in the payload body.

The Location header field shall contain the URI of the created individual application session context resource i.e. "{apiRoot}/naf-eventexposure/<apiVersion>/subscriptions/{subscriptionId}".

The "AfEventExposureSubsc" data type payload body shall contain the representation of the created "Individual Application Event Subscription".

When the "monDur" attribute is included in the response, it represents AF selected expiry time that is equal or less than the received expiry time in the request.

When the "immRep" attribute is included and sets to "true" in the subscription and the subscribed events are available, the AF shall include the reports of the events subscribed, if available, in the HTTP POST response.

When the sampling ratio as the "sampRatio" attribute is included in the subscription, the AF shall select a random subset of UEs among target UEs according to the sampling ratio and only report the event(s) related to the selected subset UEs.

When the group reporting guard time as the "grpRepTime" attribute is included in the subscription, the AF shall accumulate all the event reports for the target UEs until the group reporting guard time expires. Then the AF shall notify the NF service consumer using the Naf_EventExposure_Notify service operation, as described in subclause 4.2.4.2.

4.2.2.3 Modifying an existing subscription

Figure 4.2.2.3-1 illustrates the modification of an existing subscription.

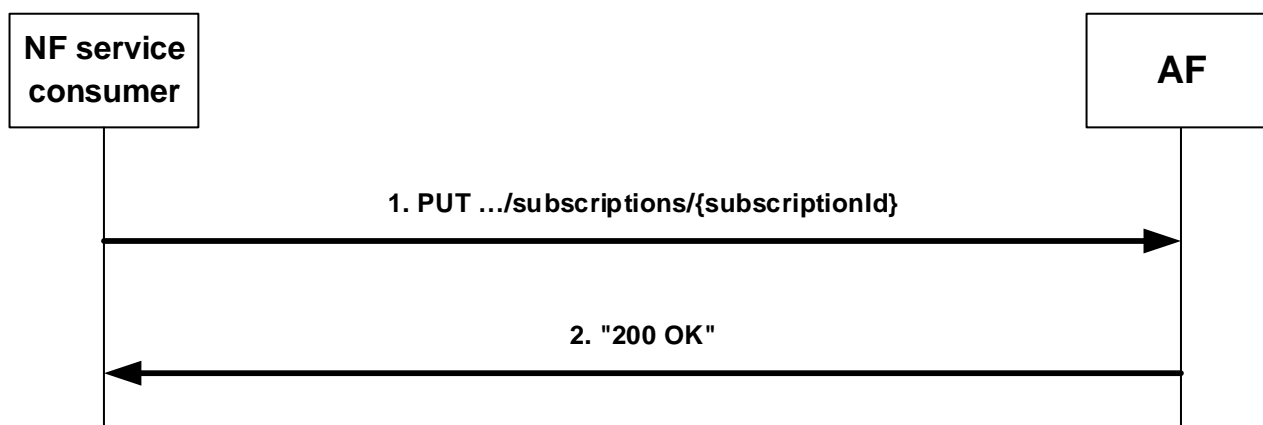


Figure 4.2.2.3-1: Modification of an existing subscription

To modify an existing subscription to event notifications, the NF service consumer shall send an HTTP PUT request with: "{apiRoot}/naf-eventexposure/<apiVersion>/subscriptions/{subscriptionId}" as request URI, as shown in step 1 of figure 4.2.2.3-1, where "{subscriptionId}" is the subscription correlation ID of the existing subscription. The "AfEventExposureSubsc" data structure is included as request body as described in subclause 4.2.2.2.

NOTE 1: An alternate NF service consumer than the one that requested the generation of the subscription resource can send the PUT.

NOTE 2: The "notifUri" attribute within the AfEventExposureSubsc data structure can be modified to request that subsequent notifications are sent to a new NF service consumer.

NOTE 3: The "monDur" attribute within the AfEventExposureSubsc data structure can be modified to extend the expiry time to keep receiving notifications.

If the AF cannot successfully fulfil the received HTTP PUT request due to the internal error or an error in the HTTP PUT request, the AF shall send the HTTP error response as specified in subclause 5.7.

Upon successful reception of an HTTP PUT request with: "{apiRoot}/naf-eventexposure/<apiVersion>/subscriptions/{subscriptionId}" as request URI and "AfEventExposureSubsc" data structure as request body, the AF shall store the subscription and shall send a HTTP "200 OK" response as shown in step 2 of figure 4.2.2.3-1, with the "AfEventExposureSubsc" data structure as response body.

The "AfEventExposureSubsc" data structure payload body shall contain the representation of the modified "Individual Application Event Subscription".

When the "monDur" attribute is included in the response, it represents AF selected expiry time that is equal or less than the received expiry time in the request.

When the "immRep" attribute is included and sets to "true" in the subscription and the subscribed events are available, the AF shall include the reports of the events subscribed, if available, in the HTTP PUT response.

When the sampling ratio as the "sampRatio" attribute is included in the subscription, the AF shall select a random subset of UEs among target UEs according to the sampling ratio and only report the event(s) related to the selected subset UEs.

When the group reporting guard time as the "grpRepTime" attribute is included in the subscription, the AF shall accumulate all the event reports for the target UEs until the group reporting guard time expires. Then the AF shall notify the NF service consumer using the Naf_EventExposure_Notify service operation, as described in subclause 4.2.4.2.

4.2.3 Naf_EventExposure_Unsubscribe service operation

4.2.3.1 General

This service operation is used by an NF service consumer to unsubscribe from event notifications.

The following procedure using the Naf_EventExposure_Unsubscribe service operation is supported:

- unsubscription from event notifications.

4.2.3.2 Unsubscription from event notifications

Figure 4.2.3.2-1 illustrates the unsubscription from event notifications.

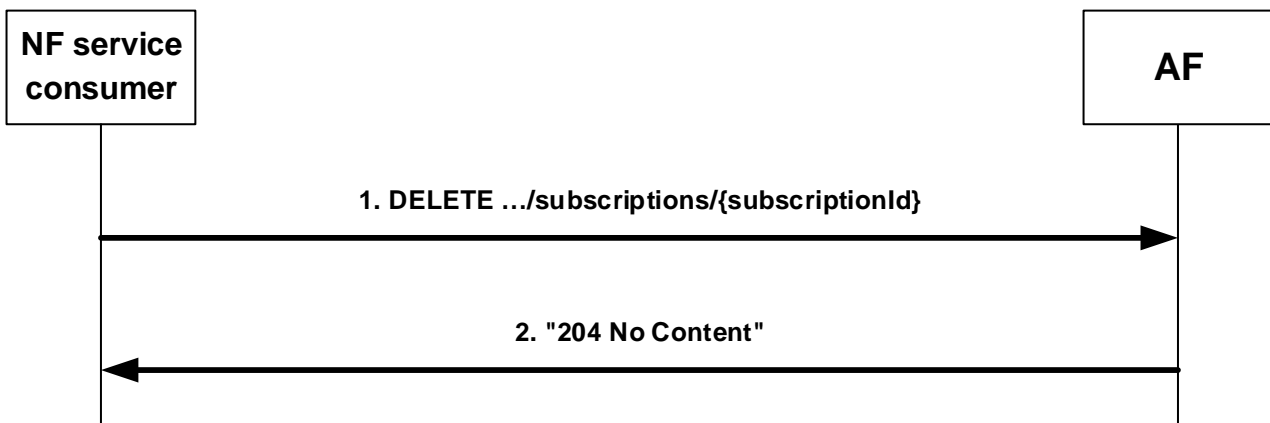


Figure 4.2.3.2-1: Unsubscription from event notifications

To unsubscribe from event notifications, the NF service consumer shall send an HTTP DELETE request with "{apiRoot}/naf-eventexposure/<apiVersion>/subscriptions/{subscriptionId}" as request URI, as shown in step 1 of figure 4.2.3.2-1, where "{subscriptionId}" is the subscription correlation identifier of the existing resource subscription that is to be deleted.

If the AF cannot successfully fulfil the received HTTP DELETE request due to the internal error or the error in the HTTP DELETE request, the AF shall send the HTTP error response as specified in subclause 5.7.

Upon successful reception of the HTTP DELETE request with: "{apiRoot}/naf-eventexposure/<apiVersion>/subscriptions/{subscriptionId}" as request URI, the AF shall remove the corresponding subscription and shall send an HTTP "204 No Content" response as shown in step 2 of figure 4.2.3.2-1.

4.2.4 Naf_EventExposure_Notify service operation

4.2.4.1 General

The Naf_EventExposure_Notify service operation enables the AF to notify to the NF service consumer(s) that the previously subscribed application related event occurred.

The following procedure using the Naf_EventExposure_Notify service operation is supported:

- notification about subscribed events.

4.2.4.2 Notification about subscribed events

Figure 4.2.4.2-1 illustrates the notification about subscribed events.

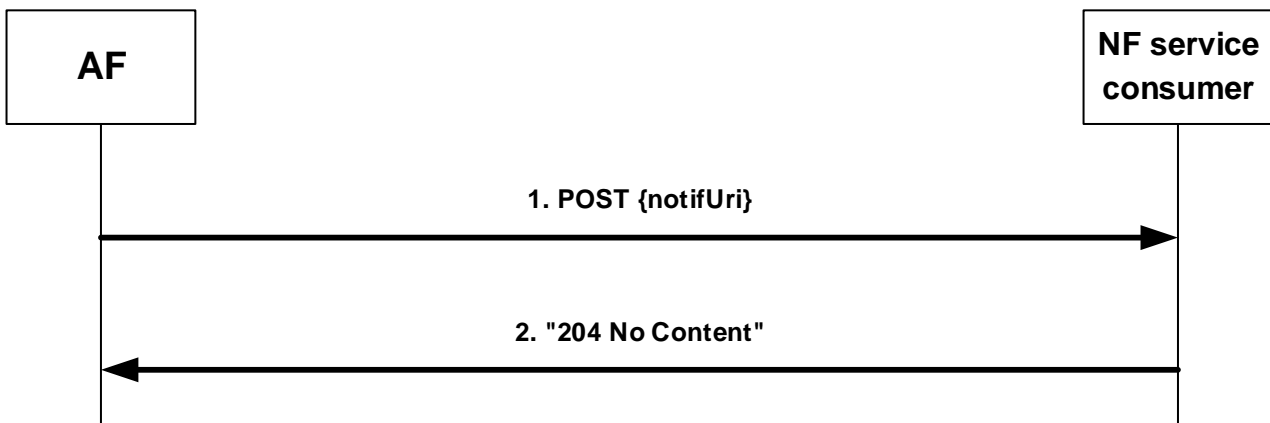


Figure 4.2.4.2-1: Notification about subscribed events

If the AF observes application related event(s) for which an NF service consumer has subscribed to, the AF shall send an HTTP POST request as shown in step 1 of figure 4.2.4.2-1, with the "{notifUri}" as request URI with the value previously provided by the NF service consumer within the corresponding subscription, and the "AfEventExposureNotif" data structure.

The "AfEventExposureNotif" data structure shall include:

- a) notification correlation ID provided by the NF service consumer during the subscription as "notifId" attribute; and
- b) information about the observed event(s) within the "eventNotifs" attribute that shall contain for each observed event an "AfEventNotification" data structure that shall include:
 - 1) the application related event as "event" attribute;
 - 2) the time at which the event was observed encoded as "timeStamp" attribute;
 - 3) if the "event" attribute is "SVC_EXPERIENCE":
 - service experience information about the application involved in the reported event in the "svcExprcInfos" attribute;
 - 4) if the "event" attribute is "UE_MOBILITY":
 - UE mobility information associated with the application as "ueMobilityInfos" attribute;
 - 5) if the "event" attribute is "UE_COMM":
 - application communication information associated with the application as "ueCommInfos" attribute; and
 - 6) if the "event" attribute is "EXCEPTIONS":

- exceptions information associated with a service flow as "exceptInfos" attribute.

If the NF service consumer cannot successfully fulfil the received HTTP POST request due to the internal error or an error in the HTTP POST request, the NF service consumer shall send the HTTP error response as specified in subclause 5.7.

Upon successful reception of the HTTP POST request with "{notifUri}" as request URI and a "AfEventExposureNotif" data structure as request body, the NF service consumer shall send a "204 No Content" HTTP response, as shown in step 2 of figure 4.2.4.2-1.

5 Naf_EventExposure Service API

5.1 Introduction

The Naf_EventExposure Service shall use the Naf_EventExposure API.

The API URI of the Naf_EventExposure API shall be:

{apiRoot}/<apiName>/<apiVersion>/

The request URIs used in HTTP requests from the NF service consumer towards the AF shall have the Resource URI structure defined in subclause 4.4.1 of 3GPP TS 29.501 [6], i.e.:

{apiRoot}/<apiName>/<apiVersion>/<apiSpecificResourceUriPart>

with the following components:

- The {apiRoot} shall be set as described in 3GPP TS 29.501 [6].
- The <apiName> shall be "naf-eventexposure".
- The <apiVersion> shall be "v1".
- The <apiSpecificResourceUriPart> shall be set as described in subclause 5.3.

5.2 Usage of HTTP

5.2.1 General

If the AF is untrusted, support of HTTP/1.1 (IETF RFC 7230 [21], IETF RFC 7231 [22], IETF RFC 7232 [23], IETF RFC 7233 [24], IETF RFC 7234 [25] and IETF RFC 7235 [26]) over TLS (IETF RFC 5246 [20]) is mandatory and support of HTTP/2 (IETF RFC 7540 [7]) over TLS (IETF RFC 5246 [20]) is recommended.

If the AF is trusted, HTTP/2, IETF RFC 7540 [7], shall be used as specified in subclause 5.2 of 3GPP TS 29.500 [5].

HTTP/2 shall be transported as specified in subclause 5.3 of 3GPP TS 29.500 [5].

The OpenAPI [8] specification of HTTP messages and content bodies for the Naf_EventExposure is contained in Annex A.

5.2.2 HTTP standard headers

5.2.2.1 General

See subclause 5.2.2 of 3GPP TS 29.500 [5] for the usage of HTTP standard headers.

5.2.2.2 Content type

JSON, IETF RFC 8259 [9], shall be used as content type of the HTTP bodies specified in the present specification as specified in subclause 5.4 of 3GPP TS 29.500 [5]. The use of the JSON format shall be signalled by the content type "application/json".

"Problem Details" JSON object shall be used to indicate additional details of the error in a HTTP response body and shall be signalled by the content type "application/problem+json", as defined in IETF RFC 7807 [10].

5.2.3 HTTP custom headers

5.2.3.1 General

The mandatory HTTP custom header fields specified in subclause 5.2.3.2 of 3GPP TS 29.500 [5] shall be applicable.

In this Release of the specification, no specific custom headers are defined for the Naf_EventExposure API.

5.3 Resources

5.3.1 Resource Structure

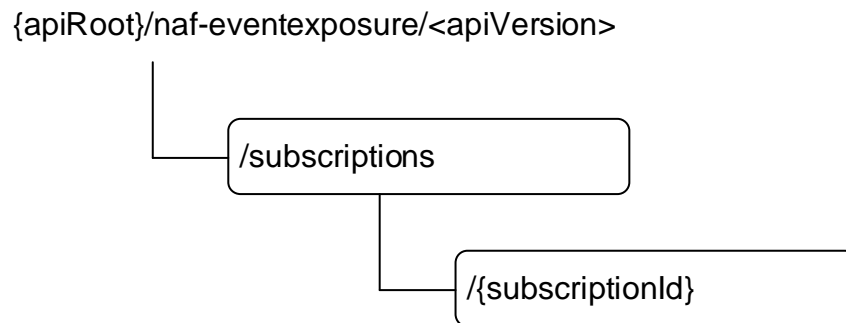


Figure 5.3.1-1: Resource URI structure of the Naf_EventExposure API

Table 5.3.1-1 provides an overview of the resources and applicable HTTP methods.

Table 5.3.1-1: Resources and methods overview

Resource name	Resource URI	HTTP method or custom operation	Description
Application Event Subscriptions	{apiRoot}/naf-eventexposure/<apiVersion>/subscriptions	POST	Subscription to the notification of application events and creation of an Individual Application Event Subscription resource.
Individual Application Event Subscription	{apiRoot}/naf-eventexposure/<apiVersion>/subscriptions/{subscriptionId}	GET	Reads an Individual Application Event Subscription resource.
		PUT	Modifies an Individual Application Event Subscription.
		DELETE	Cancels an individual subscription to notifications of application event.

5.3.2 Resource: Application Event Subscriptions

5.3.2.1 Description

The Application Event Subscriptions resource represents all subscriptions of the Naf_EventExposure service at a given AF.

5.3.2.2 Resource definition

Resource URI: {apiRoot}/naf-eventexposure/<apiVersion>/subscriptions/

This resource shall support the resource URI variables defined in table 5.3.2.2-1.

Table 5.3.2.2-1: Resource URI variables for this resource

Name	Data type	Definition
apiRoot	string	See subclause 5.1
apiVersion	string	See subclause 5.1

5.3.2.3 Resource Standard Methods

5.3.2.3.1 POST

This method shall support the URI query parameters specified in table 5.3.2.3.1-1.

Table 5.3.2.3.1-1: URI query parameters supported by the POST method on this resource

Name	Data type	P	Cardinality	Description
n/a				

This method shall support the request data structures specified in table 5.3.2.3.1-2 and the response data structures and response codes specified in table 5.3.2.3.1-3.

Table 5.3.2.3.1-2: Data structures supported by the POST Request Body on this resource

Data type	P	Cardinality	Description
AfEventExposure Subsc	M	1	Contains the information required for the creation of a new individual application event subscription.

Table 5.3.2.3.1-3: Data structures supported by the POST Response Body on this resource

Data type	P	Cardinality	Response codes	Description
AfEventExposure Subsc	M	1	201 Created	Contains the representation of the Individual Application Event Subscription resource.
NOTE: The mandatory HTTP error status codes for the POST method listed in table 5.2.7.1-1 of 3GPP TS 29.500 [5] also apply.				

Table 5.3.2.3.1-4: Headers supported by the 201 Response Code on this resource

Name	Data type	P	Cardinality	Description
Location	string	M	1	Contains the URI of the newly created resource, according to the structure: {apiRoot}/naf-eventexposure/<apiVersion>/subscriptions/{subscriptionId}

5.3.3 Resource: Individual Application Event Subscription

5.3.3.1 Description

The Individual Application Event Subscription resource represents a single subscription of the Naf_EventExposure service at a given AF.

5.3.3.2 Resource definition

Resource URI: {apiRoot}/naf-eventexposure/<apiVersion>/subscriptions/{subscriptionId}

This resource shall support the resource URI variables defined in table 5.3.3.2-1.

Table 5.3.3.2-1: Resource URI variables for this resource

Name	Data type	Definition
apiRoot	string	See subclause 5.1
apiVersion	string	See subclause 5.1
subscriptionId	string	Identifies a subscription to the AF event exposure service.

5.3.3.3 Resource Standard Methods

5.3.3.3.1 GET

This method shall support the URI query parameters specified in table 5.3.3.3.1-1.

Table 5.3.3.3.1-1: URI query parameters supported by the GET method on this resource

Name	Data type	P	Cardinality	Description
supp-feat	SupportedFeatures	O	0..1	The features supported by the NF service consumer.

This method shall support the request data structures specified in table 5.3.3.3.1-2 and the response data structures and response codes specified in table 5.3.3.3.1-3.

Table 5.3.3.3.1-2: Data structures supported by the GET Request Body on this resource

Data type	P	Cardinality	Description
n/a			

Table 5.3.3.3.1-3: Data structures supported by the GET Response Body on this resource

Data type	P	Cardinality	Response codes	Description
AfEventExposureSubscription	M	1	200 OK	Contains the representation of the Individual Application Event Subscription resource.
NOTE: The mandatory HTTP error status codes for the GET method listed in table 5.2.7.1-1 of 3GPP TS 29.500 [5] also apply.				

5.3.3.3.2 PUT

This method shall support the URI query parameters specified in table 5.3.3.3.2-1.

Table 5.3.3.3.2-1: URI query parameters supported by the PUT method on this resource

Name	Data type	P	Cardinality	Description
n/a				

This method shall support the request data structures specified in table 5.3.3.3.2-2 and the response data structures and response codes specified in table 5.3.3.3.2-3.

Table 5.3.3.3.2-2: Data structures supported by the PUT Request Body on this resource

Data type	P	Cardinality	Description
AfEventExposureSubsc	M	1	Modifies the existing Individual Application Event Subscription resource.

Table 5.3.3.3.2-3: Data structures supported by the PUT Response Body on this resource

Data type	P	Cardinality	Response codes	Description
AfEventExposureSubsc	M	1	200 OK	Successful case. The Individual Application Event Subscription resource was modified and a representation is returned.
n/a			204 No Content	Successful case. The Individual Application Event Subscription resource was modified.
NOTE: The mandatory HTTP error status codes for the PUT method listed in table 5.2.7.1-1 of 3GPP TS 29.500 [5] also apply.				

5.3.3.3.3 DELETE

This method shall support the URI query parameters specified in table 5.3.3.3.3-1.

Table 5.3.3.3.3-1: URI query parameters supported by the DELETE method on this resource

Name	Data type	P	Cardinality	Description
n/a				

This method shall support the request data structures specified in table 5.3.3.3.3-2 and the response data structures and response codes specified in table 5.3.3.3.3-3.

Table 5.3.3.3.3-2: Data structures supported by the DELETE Request Body on this resource

Data type	P	Cardinality	Description
n/a			

Table 5.3.3.3.3-3: Data structures supported by the DELETE Response Body on this resource

Data type	P	Cardinality	Response codes	Description
n/a			204 No Content	Successful case. The Individual Application Event Subscription resource matching the subscriptionId was deleted.
NOTE: The mandatory HTTP error status code for the DELETE method listed in table 5.2.7.1-1 of 3GPP TS 29.500 [5] also apply.				

5.4 Custom Operations without associated resources

No custom operation is defined in this Release of the specification.

5.5 Notifications

5.5.1 General

Notifications shall comply with subclause 6.2 of 3GPP TS 29.500 [5] and subclause 4.6.2.3 of 3GPP TS 29.501 [6].

Table 5.5.1-1: Notifications overview

Notification	Custom operation URI	Mapped HTTP method	Description
Application Event Notification	{notifUri}	POST	Notification of application related event reporting.

5.5.2 Application Event Notification

5.5.2.1 Description

The Application Event Notification is used by the AF to report one or several observed application related events to the NF service consumer that has subscribed to such notifications.

5.5.2.2 Target URI

The Notification URI "{notifUri}" shall be used with the URI variables defined in table 5.5.2.2-1.

Table 5.5.2.2-1: URI variables

Name	Data type	Definition
notifUri	Uri	The Notification Uri as assigned by the NF service consumer during the subscription service operation and described within the AfEventExposureSubsc data type (see table 5.6.2.2-1).

5.5.2.3 Standard Methods

5.5.2.3.1 POST

This method shall support the URI query parameters specified in table 5.5.2.3.1-1.

Table 5.5.2.3.1-1: URI query parameters supported by the POST method on this resource

Name	Data type	P	Cardinality	Description
n/a				

This method shall support the request data structures specified in table 5.5.2.3.1-2 and the response data structures and response codes specified in table 5.5.2.3.1-3.

Table 5.5.2.3.1-2: Data structures supported by the POST Request Body on this resource

Data type	P	Cardinality	Description
AfEventExposureNotif	M	1	Provides Information about observed application related events

Table 5.5.2.3.1-3: Data structures supported by the POST Response Body on this resource

Data type	P	Cardinality	Response codes	Description
n/a			204 No Content	The receipt of the Notification is acknowledged.
NOTE: In addition, the HTTP status codes which are specified as mandatory in table 5.2.7.1-1 of 3GPP TS 29.500 [5] for the POST method shall also apply.				

5.6 Data Model

5.6.1 General

This subclause specifies the application data model supported by the API.

Table 5.6.1-1 specifies the data types defined for the Naf_EventExposure service based interface protocol.

Table 5.6.1-1: Naf_EventExposure specific Data Types

Data type	Section defined	Description	Applicability
AfEvent	5.6.3.3	Application Events.	
AfEventExposureSubsc	5.6.2.2	Represents an Individual Application Event Subscription resource.	
AfEventExposureNotif	5.6.2.3	Describes notifications about application event that occurred in an Individual Application Event Subscription resource.	
AfEventNotification	5.6.2.6	AfEventNotification	
CommunicationCollection	5.6.2.13		
EventFilter	5.6.2.5	Represents event filter information	
EventsSubs	5.6.2.4		
ExceptionInfo	5.6.2.14	Describes the exceptions information provided by AF.	
SvcExperience	5.6.2.9	Mean opinion score with the customized range.	
ServiceExperienceInfoPerApp	5.6.2.7	Contains service experience associated with the application	
ServiceExperienceInfoPerFlow	5.6.2.8	Contains service experience associated with the service flow	
UeCommunicationCollection	5.6.2.11	Contains UE communication information associated with the application.	
UeMobilityCollection	5.6.2.10	Contains UE mobility information associated with the application.	
UeTrajectoryCollection	5.6.2.12		

Table 5.6.1-2 specifies data types re-used by the Naf_EventExposure service based interface protocol from other specifications, including a reference to their respective specifications and when needed, a short description of their use within the Naf_EventExposure service based interface.

Table 5.6.1-2: Naf_EventExposure re-used Data Types

Data type	Reference	Comments	Applicability
ApplicationId	3GPP TS 29.571 [13]		
DateTime	3GPP TS 29.571 [13]		
Dnai	3GPP TS 29.571 [13]		
EthFlowDescription	3GPP TS 29.514 [18]		
Exception	3GPP TS 29.520 [19]		
Float	3GPP TS 29.571 [13]		
FlowInfo	3GPP TS 29.122 [17]		
Gpsi	3GPP TS 29.571 [13]		
GroupId	3GPP TS 29.571 [13]		
LocationArea5G	3GPP TS 29.122 [17]		
ReportingInformation	3GPP TS 29.523 [12]		
SupportedFeatures	3GPP TS 29.571 [13]		
TimeWindow	3GPP TS 29.122 [17]		
Uri	3GPP TS 29.571 [13]		
Volume	3GPP TS 29.122 [17]		
Supi	3GPP TS 29.571 [13]		
ExtGroupId	3GPP TS 29.503 [27]		

5.6.2 Structured data types

5.6.2.1 Introduction

This subclause defines the structures to be used in resource representations.

5.6.2.2 Type AfEventExposureSubsc

Table 5.6.2.2-1: Definition of type AfEventExposureSubsc

Attribute name	Data type	P	Cardinality	Description	Applicability
eventsSubs	array(EventsSubs)	M	1..N	Subscribed events and the related event filters.	
eventsRepInfo	ReportingInformation	M	1	Represents the reporting requirements of the subscription.	
notifUri	Uri	M	1	Notification URI for event reporting.	
notifId	string	M	1	Notification Correlation ID assigned by the NF service consumer.	
eventNotifs	array(AfEventNotification)	C	1..N	Represents the Events to be reported. Shall only be present if the immediate reporting indication in the "immRep" attribute within the "eventsRepInfo" attribute sets to true in the event subscription, and the reports are available.	
supFeat	SupportedFeatures	C	0..1	This IE represents a list of Supported features used as described in subclause 5.8. Shall be present in the HTTP POST request/response; or in the HTTP GET response if the "sup-feat" attribute query parameter is included in the HTTP GET request. (NOTE)	
NOTE:	In the HTTP POST request it represents the set of NF service consumer supported features. In the HTTP POST and GET responses it represents the set of features supported by both the NF service consumer and the AF.				

5.6.2.3 Type AfEventExposureNotif

Table 5.6.2.3-1: Definition of type AfEventExposureNotif

Attribute name	Data type	P	Cardinality	Description	Applicability
notifld	string	M	1	Notification Correlation ID assigned by the NF service consumer.	
eventNotifs	array(AfEventNotif fication)	M	1..N	Represents the Events to be reported according to the subscription corresponding to the Notification Correlation ID.	

5.6.2.4 Type EventsSubs

Table 5.6.2.4-1: Definition of type EventsSubs

Attribute name	Data type	P	Cardinality	Description	Applicability
event	AfEvent	M	1	Subscribed event.	
eventFilter	EventFilter	M	1	Represents the event filter information associated with each event.	

5.6.2.5 Type EventFilter

Table 5.6.2.5-1: Definition of type EventFilter

Attribute name	Data type	P	Cardinality	Description	Applicability (NOTE 4)
gpsis	array(Gpsi)	O	1..N	Each element represents external UE identifier. (NOTE 1, NOTE 2)	
supis	array(Supi)	O	1..N	Each element represents a SUPI identifying a UE (NOTE 1, NOTE 2)	
exterGroupIds	array(ExtGroupId)	O	1..N	Each element represents a group of UEs identified by an External Group Identifier. (NOTE 1, NOTE 2)	
interGroupIds	array(GroupId)	O	1..N	Each element represents a group of UEs identified by an Internal Group Identifier (NOTE 1, NOTE 2)	
anyUeInd	boolean	O	0..1	Identifies whether the request applies to any UE. This attribute shall set to "true" if applicable for any UE, otherwise, set to "false". May only be present and sets to "true" if "AfEvent" sets to "SVC_EXPERIENCE" or "EXCEPTIONS". (NOTE 1, NOTE 2)	ServiceExperience Exceptions
applds	array(ApplicationId)	O	1..N	Each element indicates an application identifier. If absent, the EventFilter data applies to any application (i.e. all applications) (NOTE 3)	
locArea	LocationArea5G	O	0..1	Represents area of interest.	
NOTE 1: For untrusted AF, only gpsis and exterGroupIds are applicable. For trusted AF, only supis and interGroupIds are applicable.					
NOTE 2: For an applicable feature, only one attribute identifying the target UE shall be provided.					
NOTE 3: For event "UE_COMM", "UE_MOBILITY" and "EXCEPTIONS", the "applds" attribute, if present, shall include only one element.					
NOTE 4: Properties marked with a feature as defined in subclause 5.8 are applicable as described in subclause 6.6 of 3GPP TS 29.500 [5]. If no features are indicated, the related property applies for all the features.					

5.6.2.6 Type AfEventNotification

Table 5.6.2.6-1: Definition of type AfEventNotification

Attribute name	Data type	P	Cardinality	Description	Applicability
event	AfEvent	M	1	Reported application related event.	
timeStamp	DateTime	M	1	Time at which the event is observed.	
svcExpInfo	array(ServiceExperienceInfoPerApp)	C	1..N	Contains the service experience information. Shall be present if the "event" attribute sets to "SVC_EXPERIENCE"	ServiceExperience
ueMobilityInfo	array(UeMobilityCollection)	C	1..N	Contains the UE mobility information. Shall be present if the "event" attribute sets to "UE_MOBILITY"	UeMobility
ueCommInfo	array(UeCommunicationCollection)	C	1..N	Contains the application communication information. Shall be present if the "event" attribute sets to "UE_COMM"	UeCommunication
exceptInfo	array(ExceptionInfo)	C	1..N	Each element represents the exception information for a service flow. Shall be present if the "event" attribute sets to "EXCEPTIONS".	Exceptions

5.6.2.7 Type ServiceExperienceInfoPerApp

Table 5.6.2.7-1: Definition of type ServiceExperienceInfoPerApp

Attribute name	Data type	P	Cardinality	Description	Applicability
appId	ApplicationId	C	0..1	Indicates an application identifier. Shall be present if the AF event exposure service request applies to more than one application.	
svcExpPerFlows	array(ServiceExperienceInfoPerFlow)	M	1..N	Each element represents service experience for each service flow.	
gpsis	array(Gpsi)	O	1..N	Each element represents external UE identifier. (NOTE)	
supis	array(Supi)	O	1..N	SUPI identifying a UE. (NOTE)	
NOTE:	Either gpsis or supis shall be present. For untrusted AF, only gpsis is applicable. For trusted AF, only supis is applicable.				

5.6.2.8 Type ServiceExperienceInfoPerFlow

Table 5.6.2.8-1: Definition of type ServiceExperienceInfoPerFlow

Attribute name	Data type	P	Cardinality	Description	Applicability
svcExprc	SvcExperience	M	1	Service experience	
timeIntev	TimeWindow	M	1	Represents a start and stop time of the measurement period for the AF service experience.	
dnai	Dnai	O	0..1	Indicates the DN Access Identifiers representing location of the service flow.	
ipTrafficFilter	FlowInfo	O	0..1	Identifies IP packet filter.(NOTE)	
ethTrafficFilter	EthFlowDescription	O	0..1	Identifies Ethernet packet filter.(NOTE)	
NOTE: Either "ipTrafficFilter" or "ethTrafficFilter" shall be provided.					

5.6.2.9 Type SvcExperience

Table 5.6.2.9-1: Definition of type SvcExperience

Attribute name	Data type	P	Cardinality	Description	Applicability
mos	Float	M	1	Mean opinion score.	
upperRange	Float	M	1	The upper value within the rating scale range	
lowerRange	Float	M	1	The lower value within the rating scale range	

5.6.2.10 Type UeMobilityCollection

Table 5.6.2.10-1: Definition of type UeMobilityCollection

Attribute name	Data type	P	Cardinality	Description	Applicability
gpsi	Gpsi	O	0..1	Identifies a UE. (NOTE)	
supi	Supi	O	0..1	SUPI identifying a UE. (NOTE)	
appld	ApplicationId	M	1	Identifies an application identifier.	
ueTrajs	array(UeTrajectoryCollection)	M	1..N	Identifies a list of UE moving trajectories.	
NOTE: Either gpsi or supi shall be present. For untrusted AF, only gpsi is applicable. For trusted AF, only supi is applicable.					

5.6.2.11 Type UeCommunicationCollection

Table 5.6.2.11-1: Definition of type UeCommunicationCollection

Attribute name	Data type	P	Cardinality	Description	Applicability
gpsi	Gpsi	O	0..1	Identifies a UE. (NOTE 1)	
supi	Supi	O	0..1	SUPI identifying a UE. (NOTE 1)	
exterGroupld	ExtGroupld	O	0..1	Identifies an external group of UEs. (NOTE 2)	
interGroupld	Groupld	O	0..1	Identifies an internal group of UEs. (NOTE 2)	
appld	ApplicationId	M	1	Identifies an application identifier.	
comms	array(CommunicationCollection)	M	1..N	This attribute contains a list of communication information.	
NOTE 1: Either gpsi or supi shall be present. For untrusted AF, only gpsi is applicable. For trusted AF, only supi is applicable.					
NOTE 2: "interGroupld" attribute only applies to trusted AF and "exterGroupld" only applies to untrusted AF.					

5.6.2.12 Type UeTrajectoryCollection

Table 5.6.2.12-1: Definition of type UeTrajectoryCollection

Attribute name	Data type	P	Cardinality	Description	Applicability
ts	DateTime	M	1	This attribute identifies the timestamp when the UE enters the location.	
locArea	LocationArea5G	M	1	This attribute includes the location information of the UE.	

5.6.2.13 Type CommunicationCollection

Table 5.6.2.13-1: Definition of type CommunicationCollection

Attribute name	Data type	P	Cardinality	Description	Applicability
startTime	DateTime	M	1	Identifies the timestamp this communication starts.	
endTime	DateTime	M	1	Identifies the timestamp this communication stops.	
ulVol	Volume	O	0..1	Identifies the uplink traffic volume. (NOTE)	
dlVol	Volume	O	0..1	Identifies the downlink traffic volume. (NOTE)	

NOTE: At least one of ulVol or dlVol shall be provided.

5.6.2.14 Type ExceptionInfo

Table 5.6.2.14-1: Definition of type ExceptionInfo

Attribute name	Data type	P	Cardinality	Description	Applicability
ipTrafficFilter	FlowInfo	O	0..1	Identifies IP flow.(NOTE 1)	
ethTrafficFilter	EthFlowDescription	O	0..1	Identifies Ethernet flow.(NOTE 1)	
exceps	array(Exception)	M	1..N	Contains the description of one or more exception information. (NOTE 2)	

NOTE 1: Either "ipTrafficFilter" or "ethTrafficFilter" shall be provided.
NOTE 2: Only "exceptId", "exceptLevel" and "exceptTrend" within the Exception data type as defined in 3GPP TS 29.520 [19] apply to the ExceptionInfo data type.

5.6.3 Simple data types and enumerations

5.6.3.1 Introduction

This subclause defines simple data types and enumerations that can be referenced from data structures defined in the previous subclauses.

5.6.3.2 Simple data types

The simple data types defined in table 5.6.3.2-1 shall be supported.

Table 5.6.3.2-1: Simple data types

Type Name	Type Definition	Description	Applicability

5.6.3.3 Enumeration: AfEvent

The enumeration AfEvent represents the application events that can be subscribed. It shall comply with the provisions defined in table 5.6.3.3-1.

Table 5.6.3.3-1: Enumeration AfEvent

Enumeration value	Description	Applicability
SVC_EXPERIENCE	Indicates that the event subscribed is service experience data for an application.	ServiceExperience
UE_MOBILITY	Indicates that the event subscribed is UE mobility information.	UeMobility
UE_COMM	Indicates that the event subscribed is UE communication information.	UeCommunication
EXCEPTIONS	Indicates that the event subscribed is exceptions information.	Exceptions

5.7 Error handling

5.7.1 General

HTTP error handling shall be supported as specified in subclause 5.2.4 of 3GPP TS 29.500 [5].

For the Naf_EventExposure API, HTTP error responses shall be supported as specified in subclause 4.8 of 3GPP TS 29.501 [6]. Protocol errors and application errors specified in table 5.2.7.2-1 of 3GPP TS 29.500 [5] shall be supported for an HTTP method if the corresponding HTTP status codes are specified as mandatory for that HTTP method in table 5.2.7.1-1 of 3GPP TS 29.500 [5].

In addition, the requirements in the following subclauses are applicable for the Naf_EventExposure API.

5.7.2 Protocol Errors

In this Release of the specification, there are no service specific protocol errors applicable for the Naf_EventExposure API.

5.7.3 Application Errors

The application errors defined for the Naf_EventExposure service are listed in table 5.7.3-1.

Table 5.7.3-1: Application errors

Application Error	HTTP status code	Description

5.8 Feature negotiation

The optional features in table 5.8-1 are defined for the Naf_EventExposure API. They shall be negotiated using the extensibility mechanism defined in subclause 6.6 of 3GPP TS 29.500 [5].

Table 5.8-1: Supported Features

Feature number	Feature Name	Description
1	ServiceExperience	This feature indicates support for the event related to service experience.
2	UeMobility	This feature indicates support for the event related to UE mobility.
3	UeCommunication	This feature indicates support for the event related to UE communication information.
4	Exceptions	This feature indicates support for the event related to exception information.

5.9 Security

TLS (IETF RFC 5246 [20]) shall be used to support the security communication between the NF Service Consumer and the AF as defined in clause 12.3 and clause 13.1 of 3GPP TS 33.501 [14].

If the AF is trusted, as indicated in 3GPP TS 33.501 [14] and 3GPP TS 29.500 [5], the access to the Naf_EventExposure API may be authorized by means of the OAuth 2.0 protocol (see IETF RFC 6749 [15]), based on local configuration, using the "Client Credentials" authorization grant, where the NRF (see 3GPP TS 29.510 [16]) plays the role of the authorization server.

If OAuth 2.0 is used, an NF Service Consumer, prior to consuming services offered by the Naf_EventExposure API, shall obtain a "token" from the authorization server, by invoking the Access Token Request service, as described in 3GPP TS 29.510 [16], subclause 5.4.2.2.

NOTE: When multiple NRFs are deployed in a network, the NRF used as authorization server is the same NRF that the NF Service Consumer used for discovering the Naf_EventExposure service.

The Naf_EventExposure API defines a single scope "naf-eventexposure" for the entire service, and it does not define any additional scopes at resource or operation level.

If the AF is untrusted, the access to Naf_EventExposure API shall be authorized by means of OAuth2 protocol (see IETF RFC 6749 [15]), based on local configuration, using the "Client Credentials" authorization grant. If OAuth2 is used, a NF Service Consumer (e.g. NEF), prior to consuming services offered by the Naf_EventExposure API, shall obtain a "token" from the authorization server.

Annex A (normative): OpenAPI specification

A.1 General

This Annex is based on the OpenAPI 3.0.0 specification [8] and provides corresponding representations of all APIs defined in the present specification.

NOTE 1: An OpenAPIs representation embeds JSON Schema representations of HTTP message bodies.

This Annex shall take precedence when being discrepant to other parts of the specification with respect to the encoding of information elements and methods within the API(s).

NOTE 2: The semantics and procedures, as well as conditions, e.g. for the applicability and allowed combinations of attributes or values, not expressed in the OpenAPI definitions but defined in other parts of the specification also apply.

Informative copies of the OpenAPI specification files contained in this 3GPP Technical Specification are available on a Git-based repository hosted in ETSI Forge, that uses the GitLab software version control system (see clause 5B of the 3GPP TR 21.900 [11] and clause 5.3.1 of the 3GPP TS 29.501 [6] for further information).

The security scheme defined below for the Naf_EventExposure API shows the case when the AF is in untrusted domain and the "scopes" and "tokenUrl" are undefined. For the trusted AF, the "scopes" definition shall use "naf-eventexposure" and the "tokenUrl" definition shall use "{nrfApiRoot}/oauth2/token".

A.2 Naf_EventExposure API

```
openapi: 3.0.0
info:
  version: 1.0.0
  title: Naf_EventExposure
  description: |
    AF Event Exposure Service.
    © 2020, 3GPP Organizational Partners (ARIB, ATIS, CCSA, ETSI, TSDSI, TTA, TTC).
    All rights reserved.

externalDocs:
  description: 3GPP TS 29.517 V16.1.0; 5G System; Application Function Event Exposure Service; Stage
  3.
  url: http://www.3gpp.org/ftp/Specs/archive/29_series/29.517/

servers:
  - url: '{apiRoot}/naf-eventexposure/v1'
    variables:
      apiRoot:
        default: https://example.com
        description: apiRoot as defined in subclause 4.4 of 3GPP TS 29.501

security:
  - {}
  - oAuth2ClientCredentials: []

paths:
  /subscriptions:
    post:
      summary: Creates a new Individual Application Event Exposure Subscription resource
      operationId: PostAfEventExposureSubsc
      tags:
        - Application Event Subscription (Collection)
      requestBody:
        required: true
        content:
          application/json:
            schema:
              $ref: '#/components/schemas/AfEventExposureSubsc'
```



```

responses:
  '201':
    description: Success
    content:
      application/json:
        schema:
          $ref: '#/components/schemas/AfEventExposureSubsc'
    headers:
      Location:
        description: 'Contains the URI of the created individual application event
subscription resource'
        required: true
        schema:
          type: string
  '400':
    $ref: 'TS29571_CommonData.yaml#/components/responses/400'
  '401':
    $ref: 'TS29571_CommonData.yaml#/components/responses/401'
  '403':
    $ref: 'TS29571_CommonData.yaml#/components/responses/403'
  '404':
    $ref: 'TS29571_CommonData.yaml#/components/responses/404'
  '411':
    $ref: 'TS29571_CommonData.yaml#/components/responses/411'
  '413':
    $ref: 'TS29571_CommonData.yaml#/components/responses/413'
  '415':
    $ref: 'TS29571_CommonData.yaml#/components/responses/415'
  '429':
    $ref: 'TS29571_CommonData.yaml#/components/responses/429'
  '500':
    $ref: 'TS29571_CommonData.yaml#/components/responses/500'
  '503':
    $ref: 'TS29571_CommonData.yaml#/components/responses/503'
default:
  $ref: 'TS29571_CommonData.yaml#/components/responses/default'
callbacks:
  AfEventExposureNotif:
    '{$request.body#/notifUri}':
      post:
        requestBody:
          required: true
          content:
            application/json:
              schema:
                $ref: '#/components/schemas/AfEventExposureNotif'
        responses:
          '204':
            description: No Content, Notification was successful
          '400':
            $ref: 'TS29571_CommonData.yaml#/components/responses/400'
          '401':
            $ref: 'TS29571_CommonData.yaml#/components/responses/401'
          '403':
            $ref: 'TS29571_CommonData.yaml#/components/responses/403'
          '404':
            $ref: 'TS29571_CommonData.yaml#/components/responses/404'
          '411':
            $ref: 'TS29571_CommonData.yaml#/components/responses/411'
          '413':
            $ref: 'TS29571_CommonData.yaml#/components/responses/413'
          '415':
            $ref: 'TS29571_CommonData.yaml#/components/responses/415'
          '429':
            $ref: 'TS29571_CommonData.yaml#/components/responses/429'
          '500':
            $ref: 'TS29571_CommonData.yaml#/components/responses/500'
          '503':
            $ref: 'TS29571_CommonData.yaml#/components/responses/503'
          default:
            $ref: 'TS29571_CommonData.yaml#/components/responses/default'
/subscriptions/{subscriptionId}:
  get:
    summary: "Reads an existing Individual Application Event Subscription"
    operationId: GetAfEventExposureSubsc
    tags:
      - Individual Application Event Subscription (Document)
    parameters:

```

```

- name: subscriptionId
  in: path
  description: Application Event Subscription ID
  required: true
  schema:
    type: string
- name: supp-feat
  in: query
  description: Features supported by the NF service consumer
  required: false
  schema:
    $ref: 'TS29571_CommonData.yaml#/components/schemas/SupportedFeatures'
responses:
  '200':
    description: OK. Resource representation is returned
    content:
      application/json:
        schema:
          $ref: '#/components/schemas/AfEventExposureSubsc'
  '400':
    $ref: 'TS29571_CommonData.yaml#/components/responses/400'
  '401':
    $ref: 'TS29571_CommonData.yaml#/components/responses/401'
  '403':
    $ref: 'TS29571_CommonData.yaml#/components/responses/403'
  '404':
    $ref: 'TS29571_CommonData.yaml#/components/responses/404'
  '406':
    $ref: 'TS29571_CommonData.yaml#/components/responses/406'
  '429':
    $ref: 'TS29571_CommonData.yaml#/components/responses/429'
  '500':
    $ref: 'TS29571_CommonData.yaml#/components/responses/500'
  '503':
    $ref: 'TS29571_CommonData.yaml#/components/responses/503'
  default:
    $ref: 'TS29571_CommonData.yaml#/components/responses/default'
put:
  summary: "Modifies an existing Individual Application Event Subscription "
  operationId: PutAfEventExposureSubsc
  tags:
    - Individual Application Event Subscription (Document)
  requestBody:
    required: true
    content:
      application/json:
        schema:
          $ref: '#/components/schemas/AfEventExposureSubsc'
  parameters:
    - name: subscriptionId
      in: path
      description: Application Event Subscription ID
      required: true
      schema:
        type: string
  responses:
    '200':
      description: OK. Resource was successfully modified and representation is returned
      content:
        application/json:
          schema:
            $ref: '#/components/schemas/AfEventExposureSubsc'
    '204':
      description: No Content. Resource was successfully modified
    '400':
      $ref: 'TS29571_CommonData.yaml#/components/responses/400'
    '401':
      $ref: 'TS29571_CommonData.yaml#/components/responses/401'
    '403':
      $ref: 'TS29571_CommonData.yaml#/components/responses/403'
    '404':
      $ref: 'TS29571_CommonData.yaml#/components/responses/404'
    '411':
      $ref: 'TS29571_CommonData.yaml#/components/responses/411'
    '413':
      $ref: 'TS29571_CommonData.yaml#/components/responses/413'
    '415':
      $ref: 'TS29571_CommonData.yaml#/components/responses/415'

```

```

    '429':
      $ref: 'TS29571_CommonData.yaml#/components/responses/429'
    '500':
      $ref: 'TS29571_CommonData.yaml#/components/responses/500'
    '503':
      $ref: 'TS29571_CommonData.yaml#/components/responses/503'
    default:
      $ref: 'TS29571_CommonData.yaml#/components/responses/default'
  delete:
    summary: "Cancels an existing Individual Application Event Subscription "
    operationId: DeleteAfEventExposureSubsc
    tags:
      - Individual Application Event Subscription (Document)
    parameters:
      - name: subscriptionId
        in: path
        description: Application Event Subscription ID
        required: true
        schema:
          type: string
    responses:
      '204':
        description: No Content. Resource was successfully deleted
      '400':
        $ref: 'TS29571_CommonData.yaml#/components/responses/400'
      '401':
        $ref: 'TS29571_CommonData.yaml#/components/responses/401'
      '403':
        $ref: 'TS29571_CommonData.yaml#/components/responses/403'
      '404':
        $ref: 'TS29571_CommonData.yaml#/components/responses/404'
      '429':
        $ref: 'TS29571_CommonData.yaml#/components/responses/429'
      '500':
        $ref: 'TS29571_CommonData.yaml#/components/responses/500'
      '503':
        $ref: 'TS29571_CommonData.yaml#/components/responses/503'
      default:
        $ref: 'TS29571_CommonData.yaml#/components/responses/default'

components:
  securitySchemes:
    oAuth2ClientCredentials:
      type: oauth2
      flows:
        clientCredentials:
          tokenUrl: '{tokenUri}'
          scopes: {}
      description: for trusted AF, the 'naf-eventexposure' shall be used as 'scopes' and
        '{nrfApiRoot}/oauth2/token' shall be used as 'tokenUri'.

  schemas:
    AfEventExposureNotif:
      type: object
      properties:
        notifId:
          type: string
        eventNotifs:
          type: array
          items:
            $ref: '#/components/schemas/AfEventNotification'
          minItems: 1
      required:
        - notifId
        - eventNotifs
    AfEventExposureSubsc:
      type: object
      properties:
        eventsSubs:
          type: array
          items:
            $ref: '#/components/schemas/EventsSubs'
          minItems: 1
        eventsRepInfo:
          $ref: 'TS29523_Npcf_EventExposure.yaml#/components/schemas/ReportingInformation'
      notifUri:
        $ref: 'TS29571_CommonData.yaml#/components/schemas/Uri'
      notifId:

```

```

    type: string
  eventNotifs:
    type: array
    items:
      $ref: '#/components/schemas/AfEventNotification'
    minItems: 1
  suppFeat:
    $ref: 'TS29571_CommonData.yaml#/components/schemas/SupportedFeatures'
  required:
    - eventsSubs
    - eventsRepInfo
    - notifId
    - notifUri
AfEventNotification:
  type: object
  properties:
    event:
      $ref: '#/components/schemas/AfEvent'
    timeStamp:
      $ref: 'TS29571_CommonData.yaml#/components/schemas/DateTime'
    svcExprInfos:
      type: array
      items:
        $ref: '#/components/schemas/ServiceExperienceInfoPerApp'
      minItems: 1
    ueMobilityInfos:
      type: array
      items:
        $ref: '#/components/schemas/UeMobilityCollection'
      minItems: 1
    ueCommInfos:
      type: array
      items:
        $ref: '#/components/schemas/UeCommunicationCollection'
      minItems: 1
    excepInfos:
      type: array
      items:
        $ref: '#/components/schemas/ExceptionInfo'
      minItems: 1
  required:
    - event
    - timeStamp
EventsSubs:
  type: object
  properties:
    event:
      $ref: '#/components/schemas/AfEvent'
    eventFilter:
      $ref: '#/components/schemas/EventFilter'
  required:
    - event
    - eventFilter
EventFilter:
  type: object
  properties:
    gpsis:
      type: array
      items:
        $ref: 'TS29571_CommonData.yaml#/components/schemas/Gpsi'
      minItems: 1
    supis:
      type: array
      items:
        $ref: 'TS29571_CommonData.yaml#/components/schemas/Supi'
      minItems: 1
    exterGroupIds:
      type: array
      items:
        $ref: 'TS29503_Nudm_SDM.yaml#/components/schemas/ExtGroupId'
      minItems: 1
    interGroupIds:
      type: array
      items:
        $ref: 'TS29571_CommonData.yaml#/components/schemas/GroupId'
    anyUeInd:
      type: boolean
    appIds:

```

```

    type: array
    items:
      $ref: 'TS29571_CommonData.yaml#/components/schemas/ApplicationId'
    minItems: 1
  locArea:
    $ref: 'TS29122_CommonData.yaml#/components/schemas/LocationArea5G'
ServiceExperienceInfoPerApp:
  type: object
  properties:
    appId:
      $ref: 'TS29571_CommonData.yaml#/components/schemas/ApplicationId'
    svcExpPerFlows:
      type: array
      items:
        $ref: '#/components/schemas/ServiceExperienceInfoPerFlow'
      minItems: 1
    gpsis:
      type: array
      items:
        $ref: 'TS29571_CommonData.yaml#/components/schemas/Gpsi'
      minItems: 1
    supis:
      type: array
      items:
        $ref: 'TS29571_CommonData.yaml#/components/schemas/Supi'
      minItems: 1
  required:
    - svcExpPerFlows
ServiceExperienceInfoPerFlow:
  type: object
  properties:
    svcExprc:
      $ref: '#/components/schemas/SvcExperience'
    timeIntev:
      $ref: 'TS29122_CommonData.yaml#/components/schemas/TimeWindow'
    dnai:
      $ref: 'TS29571_CommonData.yaml#/components/schemas/Dnai'
    ipTrafficFilter:
      $ref: 'TS29122_CommonData.yaml#/components/schemas/FlowInfo'
    ethTrafficFilter:
      $ref: 'TS29514_Npcf_PolicyAuthorization.yaml#/components/schemas/EthFlowDescription'
SvcExperience:
  type: object
  properties:
    mos:
      $ref: 'TS29571_CommonData.yaml#/components/schemas/Float'
    upperRange:
      $ref: 'TS29571_CommonData.yaml#/components/schemas/Float'
    lowerRange:
      $ref: 'TS29571_CommonData.yaml#/components/schemas/Float'
UeMobilityCollection:
  type: object
  properties:
    gpsi:
      $ref: 'TS29571_CommonData.yaml#/components/schemas/Gpsi'
    supi:
      $ref: 'TS29571_CommonData.yaml#/components/schemas/Supi'
    appId:
      $ref: 'TS29571_CommonData.yaml#/components/schemas/ApplicationId'
    ueTrajs:
      type: array
      items:
        $ref: '#/components/schemas/UeTrajectoryCollection'
      minItems: 1
  required:
    - appId
    - ueTrajs
UeCommunicationCollection:
  type: object
  properties:
    gpsi:
      $ref: 'TS29571_CommonData.yaml#/components/schemas/Gpsi'
    supi:
      $ref: 'TS29571_CommonData.yaml#/components/schemas/Supi'
    exterGroupId:
      $ref: 'TS29503_Nudm_SDM.yaml#/components/schemas/ExtGroupId'
    interGroupId:
      $ref: 'TS29571_CommonData.yaml#/components/schemas/GroupId'

```

```
    appId:
      $ref: 'TS29571_CommonData.yaml#/components/schemas/ApplicationId'
    comms:
      type: array
      items:
        $ref: '#/components/schemas/CommunicationCollection'
      minItems: 1
  required:
  - appId
  - comms
UeTrajectoryCollection:
  type: object
  properties:
    ts:
      $ref: 'TS29571_CommonData.yaml#/components/schemas/DateTime'
    locArea:
      $ref: 'TS29122_CommonData.yaml#/components/schemas/LocationArea5G'
  required:
  - ts
  - locArea
CommunicationCollection:
  type: object
  properties:
    startTime:
      $ref: 'TS29571_CommonData.yaml#/components/schemas/DateTime'
    endTime:
      $ref: 'TS29571_CommonData.yaml#/components/schemas/DateTime'
    ulVol:
      $ref: 'TS29122_CommonData.yaml#/components/schemas/Volume'
    dlVol:
      $ref: 'TS29122_CommonData.yaml#/components/schemas/Volume'
  required:
  - startTime
  - endTime
  - ulVol
  - dlVol
ExceptionInfo:
  type: object
  properties:
    ipTrafficFilter:
      $ref: 'TS29122_CommonData.yaml#/components/schemas/FlowInfo'
    ethTrafficFilter:
      $ref: 'TS29514_Npcf_PolicyAuthorization.yaml#/components/schemas/EthFlowDescription'
  excepts:
    type: array
    items:
      $ref: 'TS29520_Nnwdaf_EventsSubscription.yaml#/components/schemas/Exception'
    minItems: 1
```

Simple data types and Enumerations

```
AfEvent:
  anyOf:
  - type: string
  enum:
  - SVC_EXPERIENCE
  - UE_MOBILITY
  - UE_COMM
  - EXCEPTIONS
  - type: string
```

Annex B (informative): Change history

Change history							
Date	TSG #	TSG Doc.	CR	Rev	Cat	Subject/Comment	New
2019-03						TS skeleton of Application Function Event Exposure Service	0.0.0
2019-04	CT3#102					Inclusion of C3-191230, C3-191374 and editorial change from Rapporteur.	0.1.0
2019-05	CT3#103					Inclusion of C3-192194, C3-192393, C3-192260 and C3-192261.	0.2.0
2019-08	CT3#105					Inclusion of C3-193373, C3-193440, C3-193441 and C3-193446.	0.3.0
2019-10	CT3#106					Inclusion of C3-194263, C3-194264, C3-194393 and C3-194439.	0.4.0
2019-11	CT3#107					Inclusion of C3-195068, C3-195226, C3-195238.	0.5.0
2019-12	CT#86	CP-193178				Presented for information	1.0.0
2019-12	CT#86	CP-193295				A title corrected	1.0.1
2020-02	CT3#108e					Inclusion of C3-201297, C3-201369, C3-201385, C3-201399, C3-201440 and C3-201466.	1.1.0
2020-03	CT#87e	CP-200188				TS sent to plenary for approval	2.0.0
2020-03	CT#87e	CP-200188				TS approved by plenary	16.0.0
2020-06	CT#88e	CP-201234	0001	-	F	Update service operation for Ue Communication	16.1.0
2020-06	CT#88e	CP-201234	0002	-	F	Corrections in TS 29.517	16.1.0
2020-06	CT#88e	CP-201234	0003	-	F	Definition of AfEventExposureSubsc in OpenAPI	16.1.0
2020-06	CT#88e	CP-201234	0004	1	D	Unsubscribe service operation	16.1.0
2020-06	CT#88e	CP-201234	0005	1	F	Correction to event description	16.1.0
2020-06	CT#88e	CP-201234	0006	1	F	Correction to target UE description	16.1.0
2020-06	CT#88e	CP-201244	0007	1	F	Storage of YAML files in ETSI Forge	16.1.0
2020-06	CT#88e	CP-201234	0008	-	F	Service operation description for UE mobility	16.1.0
2020-06	CT#88e	CP-201256	0009	1	F	URI of the Naf_EventExposure service	16.1.0
2020-06	CT#88e	CP-201234	0010	-	F	Support of immediate reporting	16.1.0
2020-06	CT#88e	CP-201077	0012	1	F	Supported features definition	16.1.0
2020-06	CT#88e	CP-201234	0013	1	F	Target UE information	16.1.0
2020-06	CT#88e	CP-201234	0014	1	F	Supported headers, Resource Data type and yaml mapping	16.1.0
2020-06	CT#88e	CP-201255	0015	-	F	Update of OpenAPI version and TS version in externalDocs field	16.1.0
2020-09	CT#89e	CP-202066	0017	1	F	Missed data type definition	16.2.0
2020-09	CT#89e	CP-202066	0018	-	F	Corrections on UE Mobility	16.2.0
2020-09	CT#89e	CP-202066	0019	-	F	Missed response code	16.2.0
2020-09	CT#89e	CP-202066	0020	1	F	Any UE indication applies to EXCEPTIONS	16.2.0

History

Document history		
V16.1.0	August 2020	Publication
V16.2.0	November 2020	Publication