

ETSI TS 129 251 V17.2.0 (2022-05)



**LTE;
Gw and Gwn reference point for sponsored data connectivity
(3GPP TS 29.251 version 17.2.0 Release 17)**



Reference

RTS/TSGC-0329251vh20

Keywords

LTE

ETSI

650 Route des Lucioles
F-06921 Sophia Antipolis Cedex - FRANCE

Tel.: +33 4 92 94 42 00 Fax: +33 4 93 65 47 16

Siret N° 348 623 562 00017 - APE 7112B
Association à but non lucratif enregistrée à la
Sous-Préfecture de Grasse (06) N° w061004871

Important notice

The present document can be downloaded from:

<http://www.etsi.org/standards-search>

The present document may be made available in electronic versions and/or in print. The content of any electronic and/or print versions of the present document shall not be modified without the prior written authorization of ETSI. In case of any existing or perceived difference in contents between such versions and/or in print, the prevailing version of an ETSI deliverable is the one made publicly available in PDF format at www.etsi.org/deliver.

Users of the present document should be aware that the document may be subject to revision or change of status.

Information on the current status of this and other ETSI documents is available at

<https://portal.etsi.org/TB/ETSIDeliverableStatus.aspx>

If you find errors in the present document, please send your comment to one of the following services:

<https://portal.etsi.org/People/CommitteeSupportStaff.aspx>

If you find a security vulnerability in the present document, please report it through our
Coordinated Vulnerability Disclosure Program:

<https://www.etsi.org/standards/coordinated-vulnerability-disclosure>

Notice of disclaimer & limitation of liability

The information provided in the present deliverable is directed solely to professionals who have the appropriate degree of experience to understand and interpret its content in accordance with generally accepted engineering or other professional standard and applicable regulations.

No recommendation as to products and services or vendors is made or should be implied.

No representation or warranty is made that this deliverable is technically accurate or sufficient or conforms to any law and/or governmental rule and/or regulation and further, no representation or warranty is made of merchantability or fitness for any particular purpose or against infringement of intellectual property rights.

In no event shall ETSI be held liable for loss of profits or any other incidental or consequential damages.

Any software contained in this deliverable is provided "AS IS" with no warranties, express or implied, including but not limited to, the warranties of merchantability, fitness for a particular purpose and non-infringement of intellectual property rights and ETSI shall not be held liable in any event for any damages whatsoever (including, without limitation, damages for loss of profits, business interruption, loss of information, or any other pecuniary loss) arising out of or related to the use of or inability to use the software.

Copyright Notification

No part may be reproduced or utilized in any form or by any means, electronic or mechanical, including photocopying and microfilm except as authorized by written permission of ETSI.

The content of the PDF version shall not be modified without the written authorization of ETSI.

The copyright and the foregoing restriction extend to reproduction in all media.

© ETSI 2022.
All rights reserved.

Intellectual Property Rights

Essential patents

IPRs essential or potentially essential to normative deliverables may have been declared to ETSI. The declarations pertaining to these essential IPRs, if any, are publicly available for **ETSI members and non-members**, and can be found in ETSI SR 000 314: "*Intellectual Property Rights (IPRs); Essential, or potentially Essential, IPRs notified to ETSI in respect of ETSI standards*", which is available from the ETSI Secretariat. Latest updates are available on the ETSI Web server (<https://ipr.etsi.org/>).

Pursuant to the ETSI Directives including the ETSI IPR Policy, no investigation regarding the essentiality of IPRs, including IPR searches, has been carried out by ETSI. No guarantee can be given as to the existence of other IPRs not referenced in ETSI SR 000 314 (or the updates on the ETSI Web server) which are, or may be, or may become, essential to the present document.

Trademarks

The present document may include trademarks and/or tradenames which are asserted and/or registered by their owners. ETSI claims no ownership of these except for any which are indicated as being the property of ETSI, and conveys no right to use or reproduce any trademark and/or tradename. Mention of those trademarks in the present document does not constitute an endorsement by ETSI of products, services or organizations associated with those trademarks.

DECT™, **PLUGTESTS™**, **UMTS™** and the ETSI logo are trademarks of ETSI registered for the benefit of its Members. **3GPP™** and **LTE™** are trademarks of ETSI registered for the benefit of its Members and of the 3GPP Organizational Partners. **oneM2M™** logo is a trademark of ETSI registered for the benefit of its Members and of the oneM2M Partners. **GSM®** and the GSM logo are trademarks registered and owned by the GSM Association.

Legal Notice

This Technical Specification (TS) has been produced by ETSI 3rd Generation Partnership Project (3GPP).

The present document may refer to technical specifications or reports using their 3GPP identities. These shall be interpreted as being references to the corresponding ETSI deliverables.

The cross reference between 3GPP and ETSI identities can be found under <http://webapp.etsi.org/key/queryform.asp>.

Modal verbs terminology

In the present document "**shall**", "**shall not**", "**should**", "**should not**", "**may**", "**need not**", "**will**", "**will not**", "**can**" and "**cannot**" are to be interpreted as described in clause 3.2 of the [ETSI Drafting Rules](#) (Verbal forms for the expression of provisions).

"**must**" and "**must not**" are **NOT** allowed in ETSI deliverables except when used in direct citation.

Contents

Intellectual Property Rights	2
Legal Notice	2
Modal verbs terminology.....	2
Foreword.....	5
1 Scope	6
2 References	6
3 Definitions and abbreviations.....	7
3.1 Definitions	7
3.2 Abbreviations	7
4 Gw reference point	7
4.1 Overview	7
4.2 Gw reference model	7
4.3 Functional elements.....	8
4.3.1 PFDF.....	8
4.3.2 PCEF.....	8
4.4 Procedures over Gw reference point	8
4.4.1 Request for PFDs ("Pull mode" and "Combination mode")	8
4.4.1.0 General	8
4.4.1.1 Request for PFDs by the full pull.....	9
4.4.1.2 Request for PFDs by the partial pull	9
4.4.2 Provisioning of PFDs ("Push mode" and "Combination mode")	10
5 Gwn reference point	11
5.1 Overview	11
5.2 Gwn reference model	11
5.3 Functional elements.....	11
5.3.1 PFDF.....	11
5.3.2 TDF.....	11
5.4 Procedures over Gwn reference point	12
6 Gw/Gwn protocol.....	12
6.1 Introduction	12
6.2 Transport layer	12
6.3 Application delivery layer	13
6.3.2 Resources and URI design.....	13
6.3.2.1 General	13
6.3.2.2 URI design for Pull mode	14
6.3.2.3 URI design for Push mode	14
6.3.3 HTTP request/response formats.....	14
6.3.3.1 General	14
6.3.3.2 GET /gwapplication/pfds/{application-identifier}	15
6.3.3.3 GET /gwapplication/pfds?{query-parameters}	17
6.3.3.4 GET /gwapplication/pfds	18
6.3.3.5 POST /gwapplication/provisioning	19
6.3.4 HTTP status codes	23
6.3.5 Feature negotiation	23
6.3.5.1 General	23
6.3.5.2 HTTP custom headers	24
6.3.5.2.1 3gpp-Optional-Features	24
6.3.5.2.2 3gpp-Required-Features	25
6.3.5.2.3 3gpp-Accepted-Features	25
6.3.5.3 Precedence for HTTP custom headers	25
6.4 Specific application communication	25
6.4.1 General.....	25

6.4.2	Content type.....	25
6.4.3	JSON PFDs fields	25
6.4.3.1	General	25
6.4.3.2	application-identifier	26
6.4.3.3	void	26
6.4.3.4	caching-time	26
6.4.3.5	pfd.....	26
6.4.3.6	pfd-identifier	27
6.4.3.7	flow-descriptions.....	27
6.4.3.8	urls.....	27
6.4.3.9	domain-names	27
6.4.3.10	dn-protocol	27
6.4.4	JSON provisioning fields.....	27
6.4.4.1	General	27
6.4.4.2	notification-flag.....	28
6.4.4.3	removal-flag	28
6.4.4.4	allowed-delay	28
6.4.4.5	partial-flag	28
6.4.5	JSON errors and informational response fields	28
6.4.5.1	General	28
6.4.5.2	error-tag.....	29
6.4.6	JSON report fields	29
6.4.6.1	General	29
6.4.6.2	pfd-reports.....	29
6.4.6.3	pfd-failure-code.....	30
6.4.7	JSON partial pull response fields.....	30
6.4.7.1	General	30
6.4.7.2	partial-flag	30
6.4.8	JSON partial pull request fields	30
6.4.8.1	General	30
6.4.8.2	timestamp	31
6.5	The discovery of PCEF/TDF and PFDF.....	31
6.5.1	PCEF/TDF discovery.....	31
6.5.2	PFDF discovery	31
7	Secure communication	31
Annex A (normative): JSON Schema.....		32
A.1	PFDs schema	32
A.2	Provisioning schema.....	33
A.3	Error and Informational response schema.....	34
A.4	Partial pull request schema.....	36
A.5	Partial pull response schema	37
Annex B (informative): Call Flows		38
B.1	General	38
B.2	Request for PFDs by Full Pull (“Pull mode”)	38
B.3	Provisioning of PFDs (“Push mode”)	38
B.4	Provisioning of PFDs by Push with Notifications.....	39
B.5	Request for PFDs by Partial Pull (“Pull mode”)	40
Annex C (informative): Change history		41
History		42

Foreword

This Technical Specification has been produced by the 3rd Generation Partnership Project (3GPP).

The contents of the present document are subject to continuing work within the TSG and may change following formal TSG approval. Should the TSG modify the contents of the present document, it will be re-released by the TSG with an identifying change of release date and an increase in version number as follows:

Version x.y.z

where:

- x the first digit:
 - 1 presented to TSG for information;
 - 2 presented to TSG for approval;
 - 3 or greater indicates TSG approved document under change control.
- y the second digit is incremented for all changes of substance, i.e. technical enhancements, corrections, updates, etc.
- z the third digit is incremented when editorial only changes have been incorporated in the document.

1 Scope

The present document provides the stage 3 specification of the Gw and Gwn reference points. The functional requirements and the stage 2 specifications of the Gw and Gwn reference points are specified in 3GPP TS 23.203 [2]. The Gw reference point lies between the Packet Flow Description Function (PFDF) and the Policy and Charging Enforcement Function (PCEF). The Gwn reference point lies between the Packet Flow Description Function (PFDF) and the Traffic Detection Function (TDF).

2 References

The following documents contain provisions which, through reference in this text, constitute provisions of the present document.

- References are either specific (identified by date of publication, edition number, version number, etc.) or non-specific.
- For a specific reference, subsequent revisions do not apply.
- For a non-specific reference, the latest version applies. In the case of a reference to a 3GPP document (including a GSM document), a non-specific reference implicitly refers to the latest version of that document *in the same Release as the present document*.

- [1] 3GPP TR 21.905: "Vocabulary for 3GPP Specifications".
- [2] 3GPP TS 23.203: "Policy and charging control architecture".
- [3] 3GPP TS 29.213: "Policy and Charging Control signalling flows and QoS parameter mapping".
- [4] 3GPP TS 23.682: "Architecture enhancements to facilitate communications with packet data networks and applications".
- [5] 3GPP TS 29.212: "Policy and Charging Control (PCC); Reference points".
- [6] IETF RFC 793: "Transmission Control Protocol".
- [7] Void.
- [8] 3GPP TS 33.210: "3G security; Network Domain Security (NDS); IP network layer security".
- [9] IETF RFC 2818: "HTTP Over TLS".
- [10] IETF RFC 3986: "Uniform Resource Identifier (URI): Generic Syntax".
- [11] IETF RFC 7159: "The JavaScript Object Notation (JSON) Data Interchange Format".
- [12] IETF draft-newton-json-content-rules-09: "A Language for Rules Describing JSON Content".

NOTE: This individual draft will not further progress in IETF. It is available from the following link:
<https://www.ietf.org/archive/id/draft-newton-json-content-rules-09.txt>.

- [13] IETF RFC 6733: "Diameter Base Protocol".
- [14] 3GPP TS 29.250: "Nu reference point between SCEF and PFDF for sponsored data connectivity".
- [15] 3GPP TS 29.155: "Traffic steering control; Representational state transfer (REST) over St reference point".
- [16] IETF RFC 7230: "Hypertext Transfer Protocol (HTTP/1.1): Message Syntax and Routing".
- [17] IETF RFC 7231: "Hypertext Transfer Protocol (HTTP/1.1): Semantics and Content".
- [18] IETF RFC 7232: "Hypertext Transfer Protocol (HTTP/1.1): Conditional Requests".
- [19] IETF RFC 7233: "Hypertext Transfer Protocol (HTTP/1.1): Range Requests".

- [20] IETF RFC 7234: "Hypertext Transfer Protocol (HTTP/1.1): Caching".
- [21] IETF RFC 7235: "Hypertext Transfer Protocol (HTTP/1.1): Authentication".
- [22] IETF RFC 3339: "Date and Time on the Internet: Timestamps".

3 Definitions and abbreviations

3.1 Definitions

For the purposes of the present document, the terms and definitions given in TR 21.905 [1] and the following apply. A term defined in the present document takes precedence over the definition of the same term, if any, in TR 21.905 [1].

Packet Flow Description (PFD): A set of information enabling the detection of application traffic provided by a 3rd party service provider (from 3GPP TS 23.203 [2]).

Pull mode: A mode used between the PCEF/TDF and the PFDF where the PFDs are sent by the PFDF at reception of an HTTP request from the PCEF/TDF.

Push mode: A mode used between the PCEF/TDF and the PFDF where the PFDs and/or notification of PFD deletion are sent by the PFDF in an HTTP request to the PCEF/TDF.

Combination mode: A mode used between the PCEF/TDF and the PFDF where both pull and push exist. This mode allows the PFDF to send the PFDs at reception of an HTTP request from the PCEF/TDF and provision PFD changes (creation/update/deletion) and/or notification of PFD creation/update/deletion in the HTTP request to the PCEF/TDF.

3.2 Abbreviations

For the purposes of the present document, the abbreviations given in TR 21.905 [1] and the following apply. An abbreviation defined in the present document takes precedence over the definition of the same abbreviation, if any, in 3GPP TR 21.905 [1].

JSON	JavaScript Object Notation
PCEF	Policy and Charging Enforcement Function
PFD	Packet Flow Description
PFDF	Packet Flow Description Function
SCEF	Service Capability Exposure Function
TDF	Traffic Detection Function

4 Gw reference point

4.1 Overview

The Gw reference point is located between the Packet Flow Description Function (PFDF) and the Policy and Charging Enforcement Function (PCEF). The Gw reference point is used for retrieval, provisioning and removal of PFDs from the PFDF to the PCEF and reporting the handling result of PFDs from the PCEF to the PFDF.

The stage 2 level requirements for the Gw reference point are defined in 3GPP TS 23.203 [2].

4.2 Gw reference model

The Gw reference point is defined between the PFDF and the PCEF. The relationships between the different functional entities involved are depicted in figure 4.2.1. The overall PCC architecture is depicted in subclause 3a of 3GPP TS 29.213 [3].



Figure 4.2.1: Gw reference model

4.3 Functional elements

4.3.1 PFDF

The PFDF (Packet Flow Description Function) is a functional element which stores PFDs associated with application identifier (s) and transfers them to the PCEF via Gw interface to enable the PCEF to perform accurate application detection when the PFDs are managed by a 3rd party service provider.

The PFDF receives PFDs for the corresponding application identifier (s) from the SCEF as defined in 3GPP TS 23.682 [4] and 3GPP TS 29.250 [14].

4.3.2 PCEF

The PCEF (Policy and Charging Enforcement Function) functionality defined in subclause 4.4.2 of 3GPP TS 29.212 [5] shall be applied. In addition, the PCEF shall support the management of PFDs provisioned by the PFDF. The application detection filter may be extended with the PFDs provided by the PFDF.

4.4 Procedures over Gw reference point

When the PFDF is deployed and the management of PFDs is supported by the PCEF, the mode of PFDs management shall be consistently configured in one PLMN, it may be:

- Pull mode only, or
- Push mode only, or
- Combination mode.

4.4.1 Request for PFDs ("Pull mode" and "Combination mode")

4.4.1.0 General

If the PartialPull feature is not supported, at the time a PCC Rule with an application identifier for which PFDs provisioned by the PFDF are not available is activated or provisioned, or when the caching timer for an application identifier elapses and a PCC Rule for the application identifier is still active, the PCEF shall request all PFDs for the application identifier from the PFDF as defined in subclause 4.4.1.1.

If the PartialPull feature is supported, when the caching timer for an application identifier elapses and a PCC rule for this application identifier is still active. The PCEF may request the PFDs for the application identifier from the PFDF as defined in subclause 4.4.1.2.

When the PCEF receives the response from the PFDF, the PCEF shall install, update or remove the received PFD(s) for the application identifier(s) accordingly.

The PCEF shall also for each application identifier start a caching timer with a value

- according to the received caching time value for that application identifier, if such a value is received for that application identifier; or
- otherwise with a default caching time value configured in the PCEF.

NOTE 1: The PCEF(s) and the PFDF(s) within an operator network are configured with the same default caching time value to be applied for all application identifiers.

NOTE 2: In the combination mode, the HTTP POST message from the PFDF does not impact the running caching timer of an application identifier.

When the PCEF removes the last PCC rule that refers to the corresponding application identifier, or when the caching timer expires and no PCC rule refers to the application identifier, the PCEF may remove the PFD(s) related with the application identifier.

The PFDs retrieved from PFDF take precedence over any PFDs pre-configured in the PCEF. If all PFDs retrieved from the PFDF are removed for an application identifier, the pre-configured PFDs shall be applied again for the application identifier.

4.4.1.1 Request for PFDs by the full pull

The PCEF shall send an HTTP GET message to the PFDF to retrieve the PFDs for one or more application identifier(s) as defined in subclauses 6.3.3.2, 6.3.3.3 and 6.3.3.4 if the PartialPull feature is not supported in the PFDF and PCEF.

Upon receipt of the HTTP request for the pull operation, the PFDF shall respond to the PCEF indicating whether the pull operation was successful or not by using one of the HTTP status codes; if the pull operation is successful, the PFDF:

- shall provide all the PFDs of the specified application identifier(s) from the request within the body of the HTTP response; and
- if there are caching time value(s) configured for any of the specified application identifier(s), shall set the caching-time to the caching time value(s) for those application identifier(s) in the body of the HTTP response.

The PCEF shall install, update or remove the received PFD(s) for the application identifier(s) as defined subclauses 6.3.3.2, 6.3.3.3 and 6.3.3.4 respectively.

4.4.1.2 Request for PFDs by the partial pull

The PCEF shall send an HTTP POST message to the PFDF for partial retrieval of the PFDs for one or more application identifier(s) as defined in subclause 6.3.3.6 if the PartialPull feature is supported in the PFDF and PCEF. The PCEF shall include the application identifier(s) and the corresponding timestamp of the PFD(s) received in the last provisioning for the application identifier in the request. The PCEF may also request full set of PFD(s) of an application identifier without including the timestamp if it is not available.

Upon receipt of the HTTP request for the pull operation, the PFDF shall respond to the PCEF indicating whether the pull operation was successful or not by using one of the HTTP status codes; if the pull operation is successful, the PFDF:

- shall include the full list of the PFD(s) for the application identifier(s) if the corresponding timestamp is not provided in the request;
- if there are no PFDs changed since the last request based on the timestamp, shall not provide the specified application identifier(s) in the body of the HTTP response; and
- if all the PFDs of the specified application identifier(s) is removed since the last request based on the timestamp, shall not provide any PFDs for the specified removed application identifier(s).
- if there are partial PFDs of the specified application identifier(s) changed since the last request based on the timestamp, shall provide the partial-flag and set to true and updated PFDs.
- if all PFDs are changed of the specified application identifier(s) since the last request based on the timestamp, shall provide all the new PFD(s) without the partial-flag.
- if there are caching time value(s) configured for any of the specified application identifier(s), shall set the caching-time to the caching time value(s) for those application identifier(s) in the body of the HTTP response.

When the PCEF receives the response message, the PCEF shall

- for an application identifier(s) within the request message but is not provided in the response message, reserve all the existing PFD(s);
- for an application identifier(s) within the response message where the PFD(s) is provided but partial-flag is not provided, remove all the existing PFD(s) (if available) and install all the newly provided PDF(s);
- for an application identifier(s) within the response message where no PFD(s) is provided, delete the existing PFD(s) and remove the application identifier(s);
- for an application identifier(s) within the response message where the PFD(s) is provided and partial-flag is also provided and set to true
 - install a new PFD(s) if the new PFD(s) with a new PFD identifier(s) is received,
 - update an existing PFD(s) if a new PFD(s) with the same PFD identifier(s) is received,
 - delete an existing PFD(s) if the same PFD identifier(s) without any content is received, and/or
 - reserve an existing PFD(s) if the PFD identifier(s) is not received.

4.4.2 Provisioning of PFDs ("Push mode" and "Combination mode")

The PFDF may create, update or remove one or multiple PFDs associated with application identifier(s) to the PCEF. When the request for creation, update, or removal for an application identifier(s) is received from the SCEF, for the Push mode, the PFDF shall for each PCEF it serves:

- immediately send to the PCEF an HTTP POST message including the provisioned changes of one or more application identifiers as specified in subclause 6.3.3.5, or
- wait for a period shorter than the allowed delay (e.g. to aggregate all the PFDs for several application) , then send to the PCEF an HTTP POST message including the provisioned changes.

For the Combination mode, the PFDF may for each PCEF it serves wait for a period shorter than the allowed delay (e.g. to aggregate all the PFDs for several application) and, if no HTTP GET request for that application identifier is received during the waiting time, then send an HTTP POST message including the provisioned changes and/or notification of PFD creation/update for that application identifier as specified in subclause 6.3.3.5.

NOTE 1: In the combination mode, the PFDF can check the received allowed delay against the caching time as specified in subclause 4.4.1 of 3GPP TS 29.250 [14], in order to utilize the pull procedure.

When the PCEF receives the HTTP POST message, the PCEF shall

- for an application identifier(s) where no flag is provided, remove the all existing all PFD(s) (if available) and install all the new provided PDF(s).
- for an application identifier(s) where the removal-flag is also provided and set to true, delete the existing PFD(s);
- for an application identifier(s) where partial-flag is also provided and set to true
 - install a new PFD(s) if the new PFD(s) with a new PFD identifier(s) is received,
 - update an existing PFD(s) if a new PFD(s) with the same PFD identifier(s) is received, and/or
 - delete an existing PFD(s) if the same PFD identifier(s) without any content is received;
- acknowledge the HTTP POST message by sending a corresponding HTTP response with the appropriate status code (200 OK for success) as described in subsclause 6.3.4; and
- retrieve the PFDs for the corresponding application identifier(s) as defined in subclause 4.4.1 either immediately if the allowed-delay is not provided, or within the provided allowed-delay for the application identifier(s) where the notification-flag is included and set to true.

NOTE 2: It depends on the implementation whether the PCEF initiates separate pull requests to retrieve the PFDs for different application identifier(s) within the allowed-delay. The decision to send PFD, and/or notification of PFD creation/update/deletion for certain application identifier on the PFDF is based on the operator policy.

NOTE 3: In the push mode, the PFDF can be configured with the list of PCEFs per application identifier(s).

NOTE 4: The caching timer is not applicable for the PCEF/TDF in Push mode.

5 Gwn reference point

5.1 Overview

The Gwn reference point is located between the Packet Flow Description Function (PFDF) and the Traffic Detection Function (TDF). The Gwn reference point enables transport of PFDs from the PFDF to the TDF for a particular Application Identifier or for a set of Application Identifiers.

The Gwn reference point supports the following functions:

- Creation, updating and removal of individual or the whole set of PFDs from the PFDF to the TDF.
- Confirmation of creation, updating and removal of PFDs from the TDF to the PFDF.

NOTE: The interaction between the PFDF and the TDF is not related to any IP-CAN session.

The stage 2 level requirements for the Gwn reference point are defined in 3GPP TS 23.203 [2].

5.2 Gwn reference model

The Gwn reference point is defined between the PFDF and the TDF. The relationships between the different functional entities involved are depicted in figure 5.2.1. The overall PCC architecture is depicted in subclause 3a of 3GPP TS 29.213 [3].



Figure 5.2.1: Gwn reference model

5.3 Functional elements

5.3.1 PFDF

Subclause 4.3.1 is applicable with the clarification that the TDF replaces the PCEF and Gwn interface replaces Gw interface.

5.3.2 TDF

The TDF (Traffic Detection Function) functionality defined in subclause 4b.4.2 of 3GPP TS 29.212 [5] shall be applied. In addition, the TDF shall support the management of PFDs provisioned by the PFDF.

5.4 Procedures over Gwn reference point

The procedures in subclause 4.4 are applicable with the clarification that the TDF replaces the PCEF in those procedures.

6 Gw/Gwn protocol

6.1 Introduction

The following layers of the protocol stack for the Gw/Gwn reference point between PCEF/TDF and PFDF are described in subclauses:

- TCP as defined in IETF RFC 793 [6] provides the communication service at the transport layer.
- An optional communication security layer can be added between the transport and the application delivery layer (see clause 7).
- The application delivery layer provides the transport of the specific application communication data using HTTP as defined in IETF RFC 7230 [16], IETF RFC 7231 [17], IETF RFC 7232 [18], IETF RFC 7233 [19], IETF RFC 7234 [20] and IETF RFC 7235 [21].
- The specific application communication layer constitutes the transport of the JSON content type.

Figure 6.1.1 illustrates the protocol stack of the RESTful Gw/Gwn reference point.

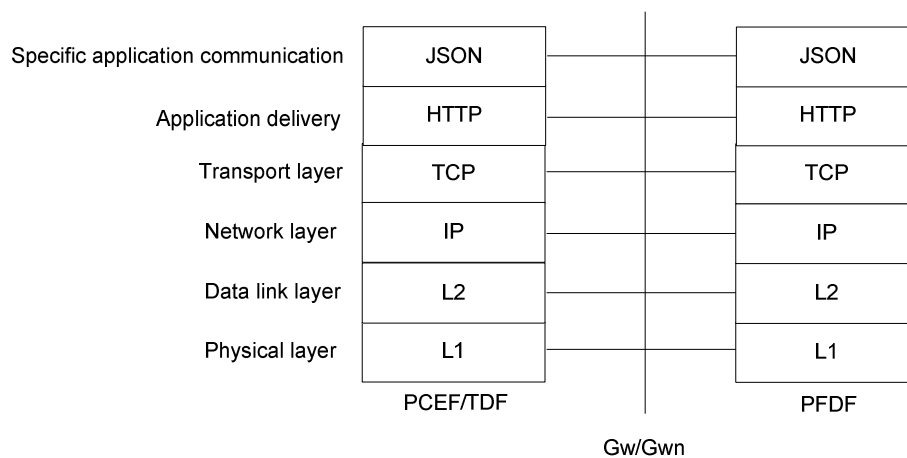


Figure 6.1.1: Protocol stack of the Gw/Gwn reference point

6.2 Transport layer

HTTP is layered over TCP, which provides a reliable transport.

If the "Pull mode" is deployed, then the PCEF/TDF shall act as an HTTP client and the PFDF shall act as an HTTP server. In this case, the PCEF/TDF shall initiate a TCP connection with the PFDF.

If the "Push mode" is deployed, then the PFDF shall act as an HTTP client and the PCEF/TDF shall act as an HTTP server. In this case, the PFDF shall initiate a TCP connection with the PCEF/TDF.

If the "Combination mode" is deployed, then

- for pull request, the HTTP roles and TCP session establishment as described above for the "Pull mode" apply.
- for push request (with or without notification), the HTTP roles and TCP session establishment as described above for the "Push mode" apply.

6.3 Application delivery layer

The application delivery layer shall use RESTful HTTP.

The application delivery layer provides the following services:

- Retrieval of the PFDs from the PFDF
- Provisioning of the PFDs by the PFDF
- Notification sent from PFDF to the PCEF/TDF to indicate PFD changes related to application identifiers being created, updated or deleted

In order to retrieve the PFD for a specific application identifier, the PFDF shall send an HTTP GET message including the application identifier as a path element of the request URI as specified in subclause 6.3.3.2.

In order to retrieve the PFDs for a set of application identifiers, the PCEF/TDF shall send an HTTP GET message to the PFDF including the application identifier(s) as the query parameters in the URI as specified in subclause 6.3.3.3.

In order to retrieve all PFDs, the PCEF/TDF may omit the '?' and {query parameters} in the HTTP GET message's URI as specified in subclause 6.3.3.4.

If the PFDF needs to provision PFDs for a set of application identifier(s) (creation/update/deletion) to the PCEF/TDF, the PFDF shall send an HTTP POST message, which includes the provisioned changes and/or the notifications of impacted application identifiers as described in subclause 6.3.3.5.

6.3.1 Methods

Methods indicate to the server what action has to be performed. Every HTTP request message has a method. The following HTTP methods can be used:

- GET: Used by the PCEF/TDF to retrieve the PFDs information for a set of application identifier(s). The server returns the PFDs representation within the body of the response.
- POST: Used by the PFDF to provision or notify PFDs changes for a set of application identifiers(s). The request URI defines the address responsible for the management of the PFDs provisioning as a controller resource.

Every HTTP request results in a response message that comes back with a status code and further information in its body, if required. The HTTP request initiator waits for this response before initiating a further request.

6.3.2 Resources and URI design

6.3.2.1 General

The URI design shall be based on the structure defined in IETF RFC 3986 [10]:

```
scheme ":" hier-part [ "?" query ] [ "#" fragment ]
  hier-part = "://" authority path-abempty
    / path-absolute
    / path-rootless
    / path-empty
```

The scheme may be HTTP or HTTPS for the Gw/Gwn interface. Within a scheme the definition of names shall follow the rules of HTTP URIs. Host and port are the main parts of the authority. The path element identifies the resources.

For the Gw/Gwn interface, the following required parts of the URI shall be used as follows:

- scheme: The application delivery layer protocol "http" or "https".

- authority: It includes the server address and optionally a port as follows: host [":" port]
- path-absolute: The path-absolute should have the following ABNF: "/" mainapp "/" mainresource ["/" resourcepath]. In this release:
 - "mainapp" is "gwapplication".
 - "mainresource" is defined in subclauses 6.3.2.2 and 6.3.2.3.
 - "resourcepath" contains the path to identify the PFDs resource for a specific application identifier.

6.3.2.2 URI design for Pull mode

In pull mode, the PFDs in PFDF is a readable RESTful resource:

- "mainresource" is "pfd".
- "resourcepath" varies and is defined in subclauses 6.3.3.2, 6.3.3.3 and 6.3.3.4.

An example of the URI to identify the RESTful resource is: <http://pfdserver.example.com/gwapplication/pfd>.

NOTE: A different resource path can be used when the Resource URI is preconfigured in the PCEF/TDF.

6.3.2.3 URI design for Push mode

In push mode, the PFDs management (associating/disassociating PFDs with application identifiers) in PCEF/TDF is a controller resource that is responsible for processing push requests that involve provisioning and/or notifying a set of changes for more than one set of PFDs for corresponding application identifiers atomically.

- "mainresource" shall be "provisioning".
- "resourcepath" is not applicable in push mode.

An example of the URI to identify the controller resource is <http://pcefserver.example.com/gwapplication/provisioning>.

NOTE: A different resource path can be used when the Resource URI is preconfigured in the PFDF.

6.3.3 HTTP request/response formats

6.3.3.1 General

The PFDs pull procedure is performed through HTTP transactions consisting of a request initiated by the PCEF/TDF and its corresponding response provided by the PFDF. While the PFDs push procedure is initiated by the PFDF and answered by the PCEF/TDF

Table 6.3.3.1-1 summarizes the content of the requests and responses. More detailed information is specified in the corresponding subclauses as indicated in the table.

Table 6.3.3.1-1: Gw/Gwn requests/response summary table

Method	Resource URI's path	Clause Defined	Request body	Initiator	Response body
GET	/gwapplication/pfds/{application-identifier} (NOTE 1)	6.3.3.2	None	PCEF/TDF	Successful response: The PFDF shall include the representation of the corresponding PDFs of the specified application identifier in the body of the response as per Annex A.1
GET	/gwapplication/pfds?{query-parameters} (NOTE 1)	6.3.3.3	None	PCEF/TDF	Successful response: The PFDF shall include the representation of the corresponding PDFs for a set of application identifier(s) in the body of the response as per Annex A.1
GET	/gwapplication/pfds (NOTE 1)	6.3.3.4	None	PCEF/TDF	Successful response: The PFDF shall include the representation of the corresponding PDFs for all application identifier(s) in the body of the response as per Annex A.1
POST	/gwapplication/provisioning (NOTE 2)	6.3.3.5	Content-Type: application/json The PFDF may include PDFs content and/or notification associated with application identifier(s) using the schema defined in Annex A.2.	PFDF	Successful response: The PCEF/TDF may include informational data in the body of the response as per Annex A.3
POST	/gwapplication/partialpull (NOTE 3)	6.3.3.6	Content-Type: application/json The PCEF/TDF may include application identifier(s) using the schema defined in Annex A.4.	PCEF/TDF	Successful response: The PFDF shall include the representation of the corresponding updated PDF(s) for the requested application identifier(s) in the body of the response as per Annex A.5.
<p>NOTE 1: A different path from /gwapplication/pfds/ may be used when it is configured in the PCEF/TDF. In that case the "path" part set in the different methods should use the configured one.</p> <p>NOTE 2: A different path from /gwapplication/provisioning may be used when it is configured in the PFDF. In that case the "path" part set in the different methods should use the configured one.</p> <p>NOTE 3: A different path from /gwapplication/partialpull may be used when it is configured in the PFDF. In that case the "path" part set in the different methods should use the configured one.</p>					

6.3.3.2 GET /gwapplication/pfds/{application-identifier}

To retrieve the PDFs for a specific application identifier, the PCEF/TDF shall send an HTTP GET request to the PFDF as follows:

- the request URI formatted as defined in subclause 6.3.2 with the "path" part set to: /gwapplication/pfds/{application-identifier}, where the application-identifier is the application id with which the PDFs are associated.

Upon receipt of the HTTP GET, the PFDF shall respond to the PCEF/TDF indicating whether the querying of the resource was successful or not using one of the HTTP status codes as defined in subclause 6.3.4. If the resource exists, the PFDF shall respond with an HTTP 200 OK status code and include the PDFs representation state within the body of the response as defined in Annex A.1. If no resource was found, the PFDF shall respond with an HTTP 404 not found. The PFDF shall also include the Content-Type header field set to "application/json".

If the PCEF/TDF receives the HTTP 404 not found status code, the PCEF/TDF shall remove all the PFD(s) of the queried application identifier.

Below is an example of a corresponding HTTP GET:

```
GET /gwapplication/pfds/test-application-1 HTTP/1.1
```

```
Host: pfdserver.example.com
```

Here is an example of a successful response :

```
HTTP/1.1 200 OK
```

```
Server: pfdserver.example.com
```

```
Content-Type: application/json
```

```
Content-Length: ...
```

```
{  
  "application-identifier":"test-application-1",  
  
  "caching-time":200000,  
  "pfds":[  
    {  
  
      "pfd-identifier":"pfd1",  
      "flow-descriptions":[  
        "permit in ip from 10.68.28.39 80 to any",  
        "permit out ip from any to 10.68.28.39 80"  
      ]  
    },  
    {  
      "pfd-identifier":"pfd2",  
      "urls":[  
        "^http://test.example.com(\\S*)?$"  
      ]  
    }  
  ]  
}
```

6.3.3.3 GET /gwapplication/pfds?*{query-parameters }*

To retrieve the PFDs for a set of application identifier(s), the PCEF/TDF may send an HTTP GET request to the PFDF as follows:

- The request URI formatted as defined in subclause 6.3.2 with the "path" part set to: /gwapplication/pfds?*{query-parameters }*, where the query-parameters contains one or multiple application identifier(s) delimited by comma with a parameter name "application-identifiers". As an example: "application-identifiers=id1,id2,id3"
- Any "=" and "," for any application identifier in the query parameters shall be encoded as "%3D" and "%2C" in the URI.

Upon receipt of the HTTP request, the PFDF shall respond to the PCEF/TDF indicating whether the querying of the resources was successful or not using one of the HTTP status codes as defined in subclause 6.3.4. If at least one resource exists, the PFDF shall respond with an HTTP 200 OK status code and include a list of the PFDs associated with the found application identifier(s) within the body of the response as defined in Annex A.1. If the PFDs associated with a queried application-identifier are not provided in the response, it implicitly means that the corresponding application-identifier does not exist at the PFDF. If no resource was found, the PFDF shall respond with an HTTP 404 not found. The PFDF shall also include the Content-Type header field set to "application/json".

If the PCEF/TDF receives the 200 OK but one or more queried application identifier(s) is not provided in the response, the PCEF/TDF shall remove the PFD(s) of the queried application identifier(s) which is not included in the response.

If the PCEF/TDF receives the HTTP 404 not found status code, the PCEF/TDF shall remove all the PFD(s) of the queried application identifier(s).

Below is an example of this HTTP GET on two sets of PFDs query. But only one is found in the PFDF.

GET /gwapplication/pfds?application-identifiers=test-application-1,test-application-2 HTTP/1.1

Host: pfdserver.example.com

Here is an example of a successful response :

HTTP/1.1 200 OK

Server: pfdserver.example.com

Content-Type: application/json

Content-Length: ...

```
[
  {
    "application-identifier":"test-application-1",
    "caching-time":200000,
    "pfds":[
      {
        "pfd-identifier":"pfd1",
        "flow-descriptions":[
          "permit in ip from 10.68.28.39 80 to any",
          "permit out ip from any to 10.68.28.39 80"
        ]
      }
    ]
  },
  {
```

```

    "pfd-identifier":"pfd2",
    "urls":[
      "^http://test.example.com(\\S*)?$"
    ]
  }
]
}
]

```

6.3.3.4 GET /gwapplication/pfds

To retrieve PFDs associated with all application identifiers, the PCEF/TDF may send an HTTP GET request to the PFDF as follows:

- The request URI formatted as defined in subclause 6.3.2 with the "path" part set to: /gwapplication/pfds.

Upon receipt of the HTTP request, the PFDF shall respond to the PCEF/TDF indicating whether the querying of the resources was successful or not using one of the HTTP status codes as defined in subclause 6.3.4. If at least one resource exists, the PFDF shall respond with an HTTP 200 OK status code and include a list of the PFDs associated with the found application identifier(s) within the body of the response as defined in Annex A.1. If no resource was found, the PFDF shall respond with an HTTP 404 not found. The PFDF shall also include the Content-Type header field set to "application/json".

If the PCEF/TDF receives the 200 OK but one or more application identifier(s) which exists at the PCEF/TDF is not provided in the response, the PCEF/TDF shall remove the PFD(s) of the application identifier(s) which is not included in the response.

If the PCEF/TDF receives the HTTP 404 not found status code, the PCEF/TDF shall remove all the PFD(s) of all the identifier(s) which exist at the PCEF/TDF.

Below is an example of this HTTP GET.

```
GET /gwapplication/pfds HTTP/1.1
```

```
Host: pfdserver.example.com
```

Here is an example of a successful response :

```
HTTP/1.1 200 OK
```

```
Server: pfdserver.example.com
```

```
Content-Type: application/json
```

```
Content-Length: ...
```

```

[
  {
    "application-identifier":"test-application-1",
    "caching-time":200000,
    "pfd":[
      {

```

```

    "pfd-identifier":"pfd1",
    "flow-descriptions":[
      "permit in ip from 10.68.28.39 80 to any",
      "permit out ip from any to 10.68.28.39 80"
    ]
  },
  {
    "pfd-identifier":"pfd2",
    "urls":[
      "^http://test.example.com(/\\S*)?$"
    ]
  }
]
}
]

```

6.3.3.5 POST /gwapplication/provisioning

The provisioning of the PFDs shall be performed by the PFDF by using the POST method as follows:

- The request URI formatted as defined in subclause 6.3.2 with the "path" part set to: /gwapplication/provisioning.
- The Content-Type header field set to "application/json"
- The body of the message encoded in JSON format as defined in Annex A.2. The body shall include
 - for the PFD(s) creation for a new application identifier, a new application identifier and its full list of PFD(s) to be created;
 - for the PFD(s) full update for an existing application identifier, the existing application identifier and its new full list of PFD(s);
 - for the PFD(s) partial update for an existing application identifier, the existing application identifier, partial update indication and
 - new PFD(s) with new PFD identifier(s) to install the new PFD(s) ,
 - new PFD(s) with existing PFD identifier(s) to update the existing PFD(s), and/or
 - the existing PFD identifier(s) without any content to remove the PFD(s);
 - for the PFD(s) removal for an existing application identifier, the existing application identifier and the removal indication;
 - for the PFD(s) notification, the notification indication and an optional allowed delay time for the PCEF/TDF to pull the corresponding PFD(s) within the allowed delay time.

Upon receipt of the HTTP POST, the PCEF/TDF shall respond to the PFDF indicating whether the provisioning was successful or not using one of the HTTP status codes as defined in subclause 6.3.4. If the provisioning was accepted, the

PCEF/TDF shall respond with an HTTP 200 OK status code if no resource is created, or an HTTP 201 Created status code if one or more resources are created. If the provisioning was rejected, the PCEF/TDF shall indicate the reason using an appropriate HTTP status code for as defined in subclause 6.3.4 and optionally additional information in the body of the response as defined in Annex A.3. If the pfd-reports is included, the PCEF/TDF shall identify the failed PFDs by including the application-identifier and specify the failed reason code by including a pfd-failure-code field.

Depending on the value of the pfd-failure-code field, the PFD may provision the PFDs again.

Below is an example of an HTTP POST and a corresponding successful response:

```
POST /gwapplication/provisioning HTTP/1.1
```

```
Host: pcefserver.example.com
```

```
Content-Type: application/json
```

```
Content-Length: ...
```

```
[
  {
    "application-identifier":"test-application-1",
    "notification-flag":true,
    "allowed-delay":600
  },
  {
    "application-identifier":"test-application-2",
    "removal-flag":true
  },
  {
    "application-identifier":"test-application-3",
    "pfd":[
      {
        "pfd-identifier":"pfd1",
        "flow-descriptions":[
          "permit in ip from 10.68.28.39 80 to any"
        ]
      }
    ]
  },
  {
    "application-identifier":"test-application-4",
    "partial-flag":true,
    "pfd":[
      {
```

```

    "pfd-identifier":"pfd3",
    "urls":[
      "^http://test.example2.net(\\S*)?$"
    ]
  },
  {
    "pfd-identifier":"pfd4"
  }
]
}
]

```

Here is an example of a successful response:

HTTP/1.1 200 OK

Date: Mon, 23 Apr 2012 17:10:00 GMT

Server: pcefserver.example.com

Content-Type: application/json

```

{
  "success-message": "Notification was processed successfully.",
}

```

6.3.3.6 POST /gwapplication/partialpull

The partialpull of the PFDs shall be performed by the PCEF by using the POST method as follows:

- The request URI formatted as defined in subclause 6.3.2 with the "path" part set to: /gwapplication/partialpull.
- The Content-Type header field set to "application/json"
- The body of the message encoded in JSON format as defined in Annex A.4. The body shall include
 - one or more existing application identifier(s) with corresponding timestamp if available for the PFD(s) partial pull,

Upon receipt of the HTTP POST, the PFD shall respond to the PCEF/TDF indicating whether the partialpull was successful or not using one of the HTTP status codes as defined in subclause 6.3.4. If the partialpull was accepted, the PFD shall respond with an HTTP 200 OK status code and additional information in the body of the response as defined in Annex A.5. If the request was rejected, the PFD shall indicate the reason using an appropriate HTTP status code for as defined in subclause 6.3.4 and optionally additional information in the body of the response as defined in Annex A.3.

Depending on the value of the pfd-failure-code field, the PCEF/TDF may partialpull the PFDs again.

Below is an example of an HTTP POST and a corresponding successful response:

POST /gwapplication/partialpull HTTP/1.1

Host: pfdserver.example.com

Content-Type: application/json

Content-Length: ...

```
[
  {
    "application-identifier":"test-application-1",
    "timestamp":"2021-01-01T20:30:40.50z",
  },
  {
    "application-identifier":"test-application-2", },
  {
    "application-identifier":"test-application-3",
    "timestamp":"2021-01-01T20:30:40.50z",
  },
]
```

Here is an example of a successful response:

HTTP/1.1 200 OK

Server: pfdserver.example.com

Content-Type: application/json

Content-Length: ...

```
[
  {
    "application-identifier":"test-application-1",
  },
  {
    "application-identifier":"test-application-2",
    "timestamp":"2021-01-02T10:20:30.40z",
    "caching-time":200000,
    "pfd":[
      {
        "pfd-identifier":"pfd1",
        "flow-descriptions":[
          "permit in ip from 10.68.28.39 80 to any"
        ]
      }
    ]
  }
]
```

```
},
{
  "application-identifier":"test-application-3",
  "timestamp":"2021-01-02T10:20:30.40z
  "caching-time":200000,
  "partial-flag":true,
  "pfd":[
    {
      "pfd-identifier":"pfd3",
      "urls":[
        "^http://test.example2.net(/\\S*)?$"
      ]
    },
    {
      "pfd-identifier":"pfd4"
    }
  ]
}
```

6.3.4 HTTP status codes

HTTP status codes are used as defined in IETF RFC 7231 [17]

6.3.5 Feature negotiation

6.3.5.1 General

The REST based Gw/Gwn interface needs to provide a mechanism to advertise required and optional features supported by both the PCEF/TDF and PFDF for interoperability reasons as the functionality of the REST Gw/Gwn based interface is augmented.

Feature negotiation shall take place during the first interaction (either HTTP POST in push or HTTP GET in pull) between the PFDF and the PCEF/TDF. The client shall include in the HTTP request the set of supported features as follows:

- if a feature is required for the proper operation of the application, it shall be included within the 3gpp-Required-Features header;
- if a feature is optional for the proper operation of the application, it shall be included within the 3gpp-Optional-Features header.

The server shall include, within the 3gpp-Accepted-Features header in the HTTP response, the set of features it supports in common with the client.

If the server does not support any of the required features advertised by the client within the 3gpp-Required-Features header, the server shall reject the HTTP request with an HTTP 412 Precondition Failed status code and shall include the commonly supported features with the client within the 3gpp-Accepted-Features.

If the server requires certain features to be supported that are not advertised by the client, the server shall reject the HTTP request with an HTTP 412 Precondition Failed status code and shall include the commonly supported features with the client within the 3gpp-Accepted-Features and the required features in the 3gpp-required-features.

If the PCEF/TDF and the PFDF successfully negotiate supported features, the list of commonly supported features shall be applicable for the lifetime of the application. Features that are not advertised as supported shall not be used.

The sender may send information that is related to the supported features. Any unrecognized information shall be ignored by the receiver.

The table below defines the features applicable to the Gw interface.

Table 6.3.5.1-1: Features used in Gw Interface

Feature	M/O	Description
PartialUpdate	O	The PFDF can use this feature for partial update in PFD push.
PartialPull	O	The PCEF can use this feature for partial pull in PFD retrieval.
DomainNameProtocol	O	This feature supports the additional protocol matching condition for the domain name in PFD data.
Feature: A short name for the feature to which the M/O and description pertain. M/O: Indication on whether the implementation of the feature is mandatory ("M") or optional ("O") in this 3GPP Release. Description: Textual description of the feature.		

The table below defines the features applicable to the Gwn interface.

Table 6.3.5.1-2: Features used in Gwn Interface

Feature	M/O	Description
PartialUpdate	O	The PFDF can use this feature for partial update in PFD push.
PartialPull	O	The PCEF can use this feature for partial pull in PFD retrieval.
DomainNameProtocol	O	This feature supports the additional protocol matching condition for the domain name in PFD data.
Feature: A short name for the feature to which the M/O and description pertain. M/O: Indication on whether the implementation of the feature is mandatory ("M") or optional ("O") in this 3GPP Release. Description: Textual description of the feature.		

NOTE: The base functionality for the Gw/Gwn interface is defined in the Release-14 version of this specification and a feature is an extension of that functionality. The negotiation of supported features allows interworking between the endpoints of the Gw/Gwn interface whereby each entity may support all, some, or none of the features that the Gw/Gwn application can support defined in this specification. Features are defined so that they are independent of each other. Any introduced feature is explicitly defined in this specification.

6.3.5.2 HTTP custom headers

This subclause defines any new HTTP custom headers introduced by this specification.

6.3.5.2.1 3gpp-Optional-Features

This header is used by the client to advertise the optional features that are supported by the client.

The encoding of the header follows the ABNF as defined in IETF RFC 7230 [16].

3gpp-Optional-Features = "3gpp-Optional-Features" ":" 1#token

An example is: 3gpp-Optional-Features: feature1, feature2

6.3.5.2.2 3gpp-Required-Features

This header is used by the client to announce the mandatory features that must be supported in the server.

This header is also used by the server to indicate the missing features that must be supported in the client.

The encoding of the header follows the ABNF as defined in IETF RFC 7230 [16].

3gpp-Required-Features = "3gpp-Required-Features" ":" 1#token

An example is: 3gpp-Required-Features: feature1, feature2

6.3.5.2.3 3gpp-Accepted-Features

The header is used by the server to confirm the commonly supported set of features with the client.

The encoding of the header follows the ABNF as defined in IETF RFC 7230 [16].

3gpp-Accepted-Features = "3gpp-Accepted-Features" ":" 1#token

An example is: 3gpp-Accepted-Features: feature1, feature2

6.3.5.3 Precedence for HTTP custom headers

The server shall evaluate the HTTP custom headers first if other conditional headers (e.g. If-None-Match, as defined in IETF RFC 7232 [18]) are also present.

6.4 Specific application communication

6.4.1 General

Specific application communication represents the presentation of application data structures by transforming data into the form that the application accepts. It establishes the context between application-layer entities.

NOTE: This release only supports the content type JSON

6.4.2 Content type

The HTTP POST requests in pull mode shall be an encoded string which is defined in subclause 6.3.3.4.

The HTTP responses in pull mode as well as the HTTP messages in push mode shall be in JSON format. The content of the JSON text is defined in subclause 6.4.3, 6.4.4 and Annex A.

The MIME media type that shall be used within the Content-Type header field is “application/json” as defined in IETF RFC 7159 [11].

6.4.3 JSON PFDs fields

6.4.3.1 General

Table 6.4.3.1.1 describes the JSON fields used within the body of the HTTP messages representing the PFDs information associated with an application identifier. The table includes the information about the name of the field and the type of the fields.

Table 6.4.3.1.1: Gw/Gwn PFD JSON fields

Field Name	Clause defined	JSON Value Type (NOTE 1)	JCR Type (NOTE 2)	Applicability (NOTE 3)
application-identifier	6.4.3.2	string	string	
caching-time	6.4.3.4	number	uint64	
pfds	6.4.3.5	array	array	
pfid-identifier	6.4.3.6	string	string	
flow-descriptions	6.4.3.7	array	array	
urls	6.4.3.8	array	array	
domain-names	6.4.3.9	array	array	
dn-protocol	6.4.3.10	string	string	DomainNameProtocol
NOTE 1: The basic JSON value types are defined in IETF RFC 7159 [11].				
NOTE 2: The JCR types are defined in IETF draft-newton-json-content-rules [12].				
NOTE 3: Fields marked with a supported feature are applicable as described in subclause 6.3.5.				

6.4.3.2 application-identifier

The application-identifier field is of type string, and contains the application identifier to which the PFDs belong.

6.4.3.3 void

6.4.3.4 caching-time

The caching-time field is of type uint64. It's a caching time value in seconds. When the caching timer elapses, the PCEF/TDF shall re-fetch the PFDs associated with the corresponding application-identifier from the PFDF. If the caching-time is:

- omitted, the PCEF/TDF shall use the preconfigured default caching time value to control how long the PFDs valid; or
- set to zero, then the PFDs are valid until explicitly deleted by the PFDF.

NOTE: The value zero of caching-time is only valid in the Combination mode and can be used as an indication of infinite PFD validity. It can be used to avoid unnecessary PFD refreshment for an application, in such case, the PFDs cannot be deleted at the expiration of the caching timer if it was not stopped at reception of caching-time set to zero value.

6.4.3.5 pfd

The pfd field is of type array. It contains the PFDs that belong to a specific application identifier. When multiple PFDs are associated with the application identifier, the application is detected when any of the PFDs associated with the application identifier is matched.

The following defines the content of the PFD:

The pfd-identifier field shall be included within the PFD, and shall be unique within the context of an application identifier.

At least one of the flow-descriptions field, the urls field, the domain-names field or a custom field shall be present for the application traffic detection. If a PFD contains multiple filter types, the PFD is only matched when every filter type contained in the PFD has a matching value.

The custom field is type of any with an arbitrary field name. Any primitive type, array, or object defined in IETF RFC 7159 [11] can be set to this field. It provides the extensions for the proprietary application traffic detection mechanisms, based on the agreement between the ASP and the mobile operator.

Below are the JCR for the PFD:

\$pfd = {

```
$pfd-identifier,  
($flow-descriptions | $urls | $domain-names | // : any) ?  
}
```

6.4.3.6 pfd-identifier

The pfd-identifier is of type string. It uniquely identifies a PFD within its associated application identifier.

6.4.3.7 flow-descriptions

The flow-descriptions is of type string array. The content of the string has the same encoding as the IPFilterRule AVP value as defined in IETF RFC 6733 [13]. It represents a 3-tuple with protocol, server ip and server port for UL/DL application traffic.

6.4.3.8 urls

The urls is type of string array. The content of the string shall be a URL or a regular expression which is used to match the significant parts of the URL.

6.4.3.9 domain-names

The domain-names is type of string array. The content of the string shall be an FQDN or a regular expression as a domain name matching criteria.

6.4.3.10 dn-protocol

The dn-protocol is type of string. It indicates the additional protocol and protocol field for domain names to be matched, applicable when domain-names field is present.

The following values are defined:

DNS_QNAME

Identifies the DNS protocol and the question name in DNS query.

TLS_SNI

Identifies the Server Name Indication in TLS ClientHello message.

TLS_SAN

Identifies the Subject Alternative Name in TLS ServerCertificate message.

TLS_SCN

Identifies the Subject Common Name in TLS ServerCertificate message.

6.4.4 JSON provisioning fields

6.4.4.1 General

In addition to subclause 6.4.3, Table 6.4.4.1.1 describes the extra JSON fields used within the body of the HTTP messages representing the PFDs provisioning information in push mode. The table includes the information about the name of the field and the type of the fields.

Table 6.4.4.1.1: Gw/Gwn Provisioning JSON fields

Field Name	Clause defined	JSON Value Type (NOTE 1)	JCR Type (NOTE 2)	Applicability (NOTE 3)
notification-flag (NOTE 4)	6.4.4.2	boolean	boolean	
removal-flag (NOTE 4)	6.4.4.3	boolean	boolean	
allowed-delay (NOTE 4)	6.4.4.4	number	uint64	
partial-flag (NOTE 4)	6.4.4.5	boolean	boolean	PartialUpdate
NOTE 1: The basic JSON value types are defined in IETF RFC 7159 [11].				
NOTE 2: The JCR types are defined in IETF draft-newton-json-content-rules [12].				
NOTE 3: Fields marked with a supported feature are applicable as described in subclause 6.3.5.				
NOTE 4: Only one of the notification-flag, removal-flag and the partial-flag for the application identifier shall be set to true.				

6.4.4.2 notification-flag

The notification-flag is of type boolean.

If the value of the flag is true, then it indicates a PFDs notification, and the corresponding PFDs information for the application identifier is not provided in the JSON body. Instead, the PCEF/TDF shall reload it with the application identifier via the pull procedure.

6.4.4.3 removal-flag

The removal-flag is of type boolean.

If the value of the flag is true, then it indicates the PFDs and its associated application identifier have been removed in the PFDF. The PCEF/TDF shall unbind all PFDs associated with that application identifier.

6.4.4.4 allowed-delay

The allowed-delay field is of type uint64. It contains a time interval in seconds. The PFDs shall be deployed within this time interval. If the allowed-delay is omitted, or if it is set to zero, then the PFDs shall be immediately deployed.

6.4.4.5 partial-flag

The partial-flag is of type boolean.

If the value of the flag is true, then it indicates some PFDs for the application identifier(s) have been created/updated/deleted in the PFDF. The PCEF/TDF shall update existing PFDs or add new PFDs for the PFD identifier(s) with PFDs, or unbind all PFDs associated with the PFD identifier(s) without any PFDs content.

6.4.5 JSON errors and informational response fields

6.4.5.1 General

Table 6.4.5.1.1 describes the JSON fields defined for the errors and informational responses including their types and the field names.

Table 6.4.5.1.1: JSON fields for errors and informational response

Field Name	Subclause defined	JSON Value Type (NOTE 1)	JCR Type (NOTE 2)
errors	3GPP TS 29.155 [15] (NOTE 4)	array	array
error-type	3GPP TS 29.155 [15] (NOTE 4)	string	"application" "interface" "server" "other" (NOTE 3)
error-message	3GPP TS 29.155 [15]	string	string
error-tag	6.4.5.2	string	string
error-path	3GPP TS 29.155 [15]	string	string
error-info	3GPP TS 29.155 [15]	object	object
success-message	3GPP TS 29.155 [15]	string	string
success-path	3GPP TS 29.155 [15]	string	string
success-info	3GPP TS 29.155 [15]	object	object

NOTE 1: The basic JSON value types are defined in IETF RFC 7159 [11].
NOTE 2: The JCR types are defined in IETF draft-newton-json-content-rules [12].
NOTE 3: The quoted strings for a string type.
NOTE 4: The error is sent from the PCEF/TDF to the PFD.

6.4.5.2 error-tag

The error-tag field is of type string. It defines a tag for a particular error.

PFD_EVENT

This error-tag shall be used when the PFDs cannot be installed/modified at the PCEF, pfd-reports shall be provided in the error-info as described in subclause 6.4.6.

6.4.6 JSON report fields

6.4.6.1 General

Table 6.4.6.1.1 describes the JSON fields defined for the report information objects which are included in the error-info field.

Table 6.4.6.1.1: JSON fields for Report from the PCEF

Field Name	Subclause defined	JSON Value Type (NOTE 1)	JCR Type (NOTE 2)
pfd-reports	6.4.6.2	array	array
application-ids	3GPP TS 29.250 [14]	array	array
pfd-failure-code	6.4.6.3	string	string

NOTE 1: The basic JSON value types are defined in IETF RFC 7159 [11].
NOTE 2: The JCR types are defined in IETF draft-newton-json-content-rules [12].

6.4.6.2 pfd-reports

The pfd-reports field is of type array and it contains a list of pfd reports.

The pfd-reports field can be used in an HTTP response to report failures in the installation/modification of PFDs in the Push mode. In this case, it shall be provided as a sub field of the error-info field.

Multiple pfd report instances shall be provided within the pfd-reports field if different pfd-failure-code values are applicable within the same HTTP response.

A report instance shall contain the application-ids and pfd-failure-code fields.

The JCR format for the pfd-reports is:

```
$pfd-reports = "pfd-reports" : [
  {
    $application-ids,
    $pfd-failure-code
  } +
]
```

6.4.6.3 pfd-failure-code

The pfd-failure-code is of type string.

The following values are defined in this release:

MALFUNCTION

RESOURCES_LIMITATION

OTHER_REASON

6.4.7 JSON partial pull response fields

6.4.7.1 General

In addition to subclause 6.4.3, Table 6.4.7.1.1 describes the extra JSON fields used within the body of the HTTP response messages representing the PFDs information in partial pull mode. The table includes the information about the name of the field and the type of the fields.

Table 6.4.7.1.1: Gw/Gwn Partial Pull Response JSON fields

Field Name	Clause defined	JSON Value Type (NOTE 1)	JCR Type (NOTE 2)	Applicability (NOTE 3)
partial-flag	6.4.4.5	boolean	boolean	PartialPull
NOTE 1: The basic JSON value types are defined in IETF RFC 7159 [11].				
NOTE 2: The JCR types are defined in IETF draft-newton-json-content-rules [12].				
NOTE 3: Fields marked with a supported feature are applicable as described in subclause 6.3.5.				

6.4.7.2 partial-flag

The partial-flag is of type boolean.

If the value of the flag is true, then it indicates the PCEF/TDF supporting update the existing PFDs, or keep the existing PFDs if no changes of PFDs for the application identifier(s) in PFDF.

6.4.8 JSON partial pull request fields

6.4.8.1 General

In addition to subclause 6.4.3, Table 6.4.8.1.1 describes the extra JSON fields used within the body of the HTTP request messages in partial pull mode. The table includes the information about the name of the field and the type of the fields.

Table 6.4.8.1.1: Gw/Gwn PartialPull JSON fields

Field Name	Clause defined	JSON Value Type (NOTE 1)	JCR Type (NOTE 2)	Applicability (NOTE 3)
timestamp	6.4.8.2	string	string	PartialPull
NOTE 1: The basic JSON value types are defined in IETF RFC 7159 [11].				
NOTE 2: The JCR types are defined in IETF draft-newton-json-content-rules [12].				
NOTE 3: Fields marked with a supported feature are applicable as described in subclause 6.3.5.				
NOTE 4: String with the format as defined in RFC 3339 [22].				

6.4.8.2 timestamp

The timestamp is of type string formatted as defined in RFC 3339 [22], and contains the UTC time set for the PFD(s) of the application identifier provisioning by the PFDF.

6.5 The discovery of PCEF/TDF and PFDF

6.5.1 PCEF/TDF discovery

For “Push mode”, the PFDF requires a method to discover the PCEF(s)/TDF(s).

A list of PCEF/TDF URIs may be pre-configured on the PFDF.

The PFDF may select the PCEF/TDF by this configuration.

NOTE: Other methods to discover the PCEF(s)/TDF(s) are implementation specific.

6.5.2 PFDF discovery

For “Pull mode”, the PCEF/TDF requires a method to discover the PFDF.

The PFDF URI may be pre-configured on the PCEF/TDF.

The PCEF/TDF may select the PFDF by this configuration.

NOTE 1: Other methods to discover the PFDF are implementation specific.

NOTE 2: If multiple PFDFs are deployed within one PLMN, coordination between the PFDFs is needed to avoid duplicated provisioning, e.g. to avoid that the PCEF/TDFs served by different PFDFs are overlapping

7 Secure communication

Either the NDS/IP network layer security defined in 3GPP TS 33.210 [8] or HTTP over TLS as defined in IETF RFC 2818 [9] should be used to secure communication over the REST based Gw and Gwn interfaces.

Annex A (normative): JSON Schema

A.1 PFDs schema

This subclause defines the JSON schema for the body of HTTP responses providing the state of one or more PFDs resources in pull mode. The schema is based on IETF draft-newton-json-content-rules [12] and is defined below:

```
# jcr-version 0.7
```

```
# ruleset-id 3gpp.gwapplication.pfds
```

```
; JCR representing the pfds root resource
```

```
$pfds-root = @{root}{
  $application-identifier,
  $caching-time ?,
  $partial-flag ? $pfds ?
}
```

```
; An array list of the PFDs for multiple application identifiers
```

```
$pfds-array-root = @{root} [ $pfds-root * ]
```

```
; A flag indicates whether this is a partial update or not
```

```
$partial-flag = "partial-flag" : boolean
```

```
; The caching timer for the PFDs
```

```
$caching-time = "caching-time" : uint64
```

```
; The PFDs associated with the same application identifier
```

```
$pfds = "pfds" : [ $pfd * ]
```

```
; The PFD content
```

```
$pfd = {
  $pfd-identifier,
  ( $flow-descriptions | $urls | $domain-names | // : any ) ?,
  $dn-protocol ?
}
```

; The PFD identifier

```
$pfd-identifier = "pfd-identifier" : string
```

; The flow descriptions

```
$flow-descriptions = "flow-descriptions" : [ string + ]
```

; The url matching expressions

```
$urls = "urls" : [ string + ]
```

; The domain name match criteria

```
$domain-names = "domain-names" : [ string + ]
```

; The domain name protocol

```
$dn-protocol =: (
```

```
  "DNS_QNAME" |
```

```
  "TLS_SNI" |
```

```
  "TLS_SAN" |
```

```
  "TLS_SCN"
```

```
)
```

A.2 Provisioning schema

This subclause defines the JSON schema for the body of HTTP request providing the provisioned PFDs as well as the PFDs notifications in push mode. The schema is based on IETF draft-newton-json-content-rules [12] and is defined below:

```
# jcr-version 0.7
```

```
# ruleset-id 3gpp.gwapplication.provisioning
```

```
# import 3gpp.gwapplication.pfds as pfds
```

; JCR representing the PFDs provisioning data

```
$provisioning-root = @{root}{
```

```
  $pfds.application-identifier,
```

```
  $notification-flag ?,
```

```
  $removal-flag ?,
```

```

$partial-flag ?,
$allowed-delay ?,
$pfds.pfds ?
}

```

; An array list of the PFDs provisioning/notification for multiple application identifiers

```
$provisioning-array-root = @{root} [ $provisioning-root * ]
```

; A flag indicates whether this is a notification or a provisioning

```
$notification-flag = "notification-flag" : boolean
```

; A flag indicates whether this is a removal or not

```
$removal-flag = "removal-flag" : boolean
```

; A flag indicates whether this is a partial update or not

```
$partial-flag = "partial-flag" : boolean
```

; The allowed delay time for the PFDs deployment

```
$allowed-delay = "allowed-delay" : uint64
```

A.3 Error and Informational response schema

This subclause defines the JSON schema for the body of HTTP responses in case of errors or success. The schema is based on IETF draft-newton-json-content-rules [12] and is defined below:

```
# jcr-version 0.7
```

```
# ruleset-id 3gpp.gwapplication.info
```

; A JCR for the error/successful response body

; Errors information

```
$errors-root = @{root} { $errors }
```

; Success information

```
$success-root = @{root} {
```

```
  $success-message,
```

```
  $success-path ?,
```

```
  $success-info ?
```

```
}
```

; Resource fields definitions

; The list of errors returned in responses sent by the PCEF/TDF

```
$errors = "errors" : [
```

```
{
```

```
  $error-type,
```

```
  $error-message,
```

```
  $error-tag ?,
```

```
  $error-path ?,
```

```
  $error-info ?
```

```
  } +
```

```
]
```

; The error type for an error. It can be one of 'application', 'interface', 'server' and 'other'.

```
$error-type = "error-type" : ( "application" | "interface" | "server" | "other" )
```

; The error text message

```
$error-message = "error-message" : string
```

; The error tag for a specific error

```
$error-tag = "error-tag" : string
```

; A JSON pointer path to the error resource

```
$error-path = "error-path" : string
```

; Any additional information for the error

```
$error-info = "error-info" : {
```

```
  $pfd-reports ?,
```

```
  // : any *
```

```
}
```

; Report fields definitions

; The list of pfd reports sent to the PFDF

```
$pfd-reports = "pfd-reports" : [
```

```
{
  $application-ids,
  $pfd-failure-code
} +
]
```

; The string format for the pfd failure code

```
$pfd-failure-code = (
  "MALFUNCTION" |
  "RESOURCES_LIMITATION" |
  "OTHER_REASON"
)
```

; The successful text message

```
$success-message = "success-message" : string
```

; A JSON pointer path to the success resource

```
$success-path = "success-path" : string
```

; Any additional information for the success.

```
$success-info = "success-info" : { // : any * }
```

; application identifiers

```
$application-ids = "application-ids" : [ string + ]
```

A.4 Partial pull request schema

This subclause defines the JSON schema for the body of HTTP request for PFD(s) for one or more application identifier(s) in partial pull mode. The schema is based on IETF draft-newton-json-content-rules [12] and is defined below:

```
# jcr-version 0.7
# ruleset-id 3gpp.gwapplication.partialpullrequest
# import 3gpp.gwapplication.pfds as pfds
```

; JCR representing the partial pull request data

```
$partialpullrequest-root = @ {root} {
  $pfds.application-identifier,
```

```

    $timestamp ?,
  }

```

; An array list of the partial pull request data for multiple application identifiers

```
$partialpullrequest-array-root = @ {root} [ $partialpullrequest-root * ]
```

; The UTC time set for the PFD(s) of the application identifier provisioning by the PFDF.

```
$timestamp = "timestamp" : string
```

A.5 Partial pull response schema

This subclause defines the JSON schema for the body of HTTP response providing the provisioned PFDs in partial pull mode. The schema is based on IETF draft-newton-json-content-rules [12] and is defined below:

```
# jcr-version 0.7
```

```
# ruleset-id 3gpp.gwapplication.partialpullresponse
```

```
# import 3gpp.gwapplication.pfds as pfds
```

```
# import 3gpp.gwapplication.provisioning as provisioning
```

```
# import 3gpp.gwapplication.partialpullrequest as request
```

; JCR representing the partial pull response data

```

$partialpullresponse-root = @ {root} {
  $pfds.application-identifier,
  $provisioning.partial-flag ?,
  $request.timestamp ?,
  $pfds.pfds ?
}

```

; An array list of the partial pull response data for multiple application identifiers

```
$partialpullresponse-array-root = @ {root} [ $partialpullresponse-root * ]
```

Annex B (informative): Call Flows

B.1 General

This annex describes the procedures for the interactions between the PFDF and the PCEF/TDF.

B.2 Request for PFDs by Full Pull (“Pull mode”)

This subclause describes the signalling flow for the request for PFDs by full pull.

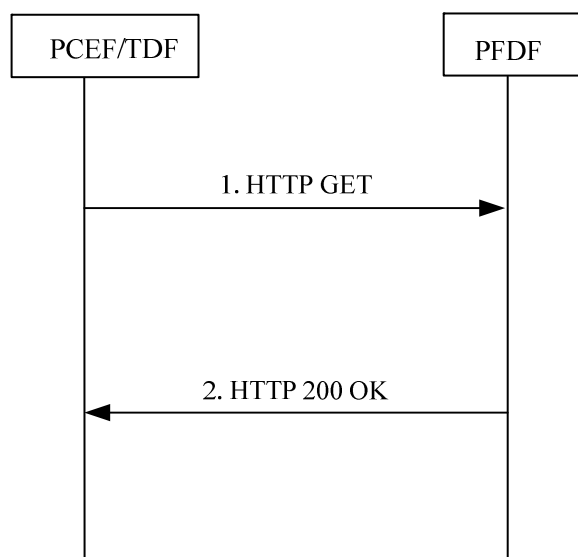


Figure B.2.1: Request for PFDs by full pull

1. The PCEF/TDF sends the HTTP GET to the PFDF to request the PFDs including the parameters defined in subclause 6.3.3.2, 6.3.3.3 or 6.3.3.4.
2. The PFDF sends the HTTP 200 OK response to the PCEF/TDF including the parameters defined in subclause 6.3.3.2, 6.3.3.3 or 6.3.3.4.

B.3 Provisioning of PFDs (“Push mode”)

This subclause describes the signalling flow for the provisioning of PFDs.

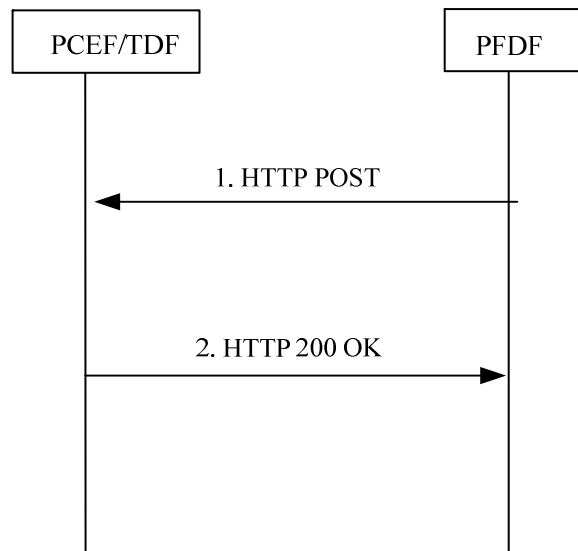


Figure B.3.1: Provisioning of the PFDs

1. The PFDf sends the HTTP POST to the PCEF/TDF to provision the PFDs of one or more application identifiers including the parameters defined in subclause 6.3.3.5.
2. The PCEF/TDF sends the HTTP 200 OK response to the PFDf including the parameters defined in subclause 6.3.3.5.

B.4 Provisioning of PFDs by Push with Notifications

This subclause describes the signalling flow for the provisioning of PFDs by push with notifications.

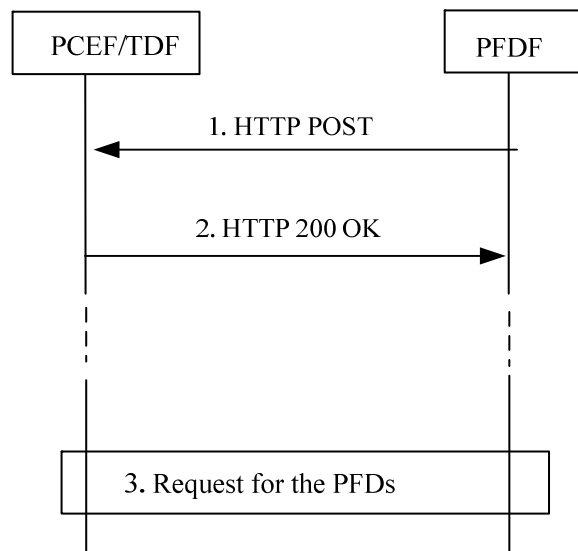


Figure B.4.1: Provisioning of the PFDs by push with notification

1. The PFDf sends the HTTP POST to the PCEF/TDF to provision the notification of creation/update for one or more application identifiers including the parameters defined in subclause 6.3.3.5.
2. The PCEF/TDF sends the HTTP 200 OK response to the PFDf including the parameters defined in subclause 6.3.3.5.
3. Within the allowed-delay provided in the step1, the PCEF/TDF initiates the procedure defined in Annex B.2 to request the PFDs for the application identifiers.

NOTE: The step 3 can be executed multiple times if the PCEF/TDF initiates separate pull requests to retrieve the PFDs for different application identifier(s).

B.5 Request for PFDs by Partial Pull (“Pull mode”)

This subclause describes the signalling flow for the request for PFDs by partial pull.

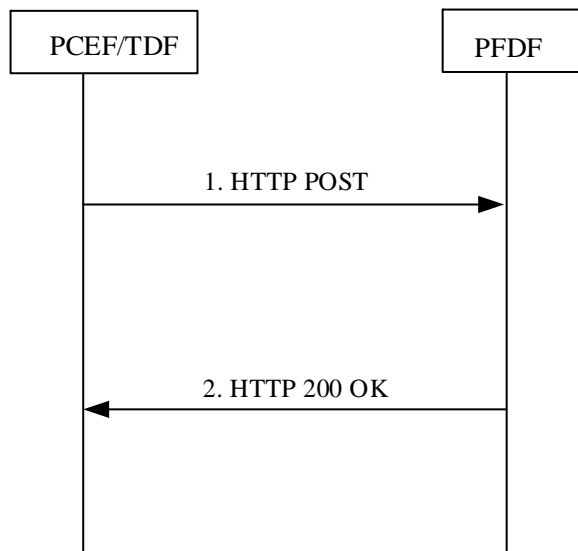


Figure B.5.1: Request for PFDs by partial pull

1. The PCEF/TDF sends the HTTP POST to the PFDf to request the PFDs including the parameters defined in subclause 6.3.3.6.
2. The PFDf sends the HTTP 200 OK response to the PCEF/TDF including the parameters defined in subclause 6.3.3.6.

Annex C (informative): Change history

Date	TSG #	TSG Doc.	CR	Rev	Cat	Subject/Comment	New
2016-10						TS skeleton of Gw and Gwn reference points stage 3.	0.0.0
2016-10						Inclusion of C3-163212, C3-163213, C3-163304, C3-163323, C3-163326, C3-163327 and editorial change from Rapporteur.	0.1.0
2016-11						Inclusion of C3-164174, C3-164177, C3-164231 and editorial change from Rapporteur.	0.2.0
2017-01						Inclusion of C3-170055, C3-170060, C3-170061, C3-170063, C3-170065 and editorial change from Rapporteur.	0.3.0
2017-02						Inclusion of C3-171274, C3-171304, C3-171307, C3-171308, C3-171319, and editorial change from Rapporteur.	0.4.0
2017-03	CT#75	CP-170101				TS sent for Information to Plenary	1.0.0
2017-04						Inclusion of C3-172137, C3-172195, C3-172197, C3-172237, C3-172238, C3-172246, and editorial change from Rapporteur.	1.1.0
2017-05						Inclusion of C3-173120, C3-173154, C3-173196, C3-173198, C3-173201, C3-173288, C3-173289, C3-173290, C3-173295, C3-173297, C3-173320, C3-173322, C3-173331, and editorial change from Rapporteur.	1.2.0
2017-06	CT#76	CP-171144				TS sent for approval to plenary.	2.0.0
2017-06	CT#76	CP-171144				TS approved at plenary.	14.0.0
2017-09	CT#77	CP-172047	0001	2	F	Clarification of partial update.	14.1.0
2017-09	CT#77	CP-172047	0002	3	F	Clarification of combination mode.	14.1.0
2017-09	CT#77	CP-172047	0005	2	F	Clarification of PCEF's behaviour in the pull mode.	14.1.0
2017-09	CT#77	CP-172047	0006	1	F	Update the reference of HTTP 1.1.	14.1.0
2017-09	CT#77	CP-172047	0007	1	F	Caching time correction.	14.1.0
2017-09	CT#77	CP-172047	0011	1	F	PFD error report correction.	14.1.0
2017-09	CT#77	CP-172047	0012	1	F	Correction for PFD provisioning notification.	14.1.0
2017-09	CT#77	CP-172047	0014	1	F	Reference and URI design correction.	14.1.0
2017-09	CT#77	CP-172047	0015	1	F	Correction to PFD removal.	14.1.0
2017-12	CT#78	CP-173100	0016	-	F	Correction to PFD removal.	14.2.0
2017-12	CT#78	CP-173100	0017	-	F	Precedence for 3GPP custom headers.	14.2.0
2018-06	SA#80	-	-	-	-	Update to Rel-15 version (MCC)	15.0.0
2018-12	CT#82	CP-183120	0019	1	A	Correction to PFD retrieval by pull mode	15.1.0
2019-03	CT#83	CP-190133	0020	3	B	PFD extension	16.0.0
2019-06	CT#84	CP-191097	0023	-	A	Reference update: draft-newton-json-content-rules	16.1.0
2019-06	CT#84	CP-191097	0026	-	A	Encoding of custom header fields	16.1.0
2019-09	CT#85	CP-192168	0029		A	Correct presence condition in PFD definition	16.2.0
2020-12	CT#90 e	CP-203135	0030	1	B	Optimized Pull mode	17.0.0
2021-03	CT#91 e	CP-210215	0031	1	B	Partial pull update	17.1.0
2021-03	CT#91 e	CP-210215	0032	-	B	Procedure of partial pull update	17.1.0
2021-03	CT#91 e	CP-210215	0033	2	F	Corrections on partial pull	17.1.0
2021-06	CT#92 e	CP-211231	0034	1	F	Response of partial pull	17.2.0

History

Document history		
V17.2.0	May 2022	Publication