

ETSI TS 128 668 V17.0.0 (2022-04)



**Universal Mobile Telecommunications System (UMTS);
LTE;
Telecommunication management;
Radio Planning Tool Access (RPTA)
Integration Reference Point (IRP);
Information Service (IS)
(3GPP TS 28.668 version 17.0.0 Release 17)**



Reference

RTS/TSGS-0528668vh00

Keywords

LTE,UMTS

ETSI

650 Route des Lucioles
F-06921 Sophia Antipolis Cedex - FRANCE

Tel.: +33 4 92 94 42 00 Fax: +33 4 93 65 47 16

Siret N° 348 623 562 00017 - APE 7112B
Association à but non lucratif enregistrée à la
Sous-Préfecture de Grasse (06) N° w061004871

Important notice

The present document can be downloaded from:

<http://www.etsi.org/standards-search>

The present document may be made available in electronic versions and/or in print. The content of any electronic and/or print versions of the present document shall not be modified without the prior written authorization of ETSI. In case of any existing or perceived difference in contents between such versions and/or in print, the prevailing version of an ETSI deliverable is the one made publicly available in PDF format at www.etsi.org/deliver.

Users of the present document should be aware that the document may be subject to revision or change of status.

Information on the current status of this and other ETSI documents is available at

<https://portal.etsi.org/TB/ETSIDeliverableStatus.aspx>

If you find errors in the present document, please send your comment to one of the following services:

<https://portal.etsi.org/People/CommitteeSupportStaff.aspx>

If you find a security vulnerability in the present document, please report it through our
Coordinated Vulnerability Disclosure Program:

<https://www.etsi.org/standards/coordinated-vulnerability-disclosure>

Notice of disclaimer & limitation of liability

The information provided in the present deliverable is directed solely to professionals who have the appropriate degree of experience to understand and interpret its content in accordance with generally accepted engineering or other professional standard and applicable regulations.

No recommendation as to products and services or vendors is made or should be implied.

No representation or warranty is made that this deliverable is technically accurate or sufficient or conforms to any law and/or governmental rule and/or regulation and further, no representation or warranty is made of merchantability or fitness for any particular purpose or against infringement of intellectual property rights.

In no event shall ETSI be held liable for loss of profits or any other incidental or consequential damages.

Any software contained in this deliverable is provided "AS IS" with no warranties, express or implied, including but not limited to, the warranties of merchantability, fitness for a particular purpose and non-infringement of intellectual property rights and ETSI shall not be held liable in any event for any damages whatsoever (including, without limitation, damages for loss of profits, business interruption, loss of information, or any other pecuniary loss) arising out of or related to the use of or inability to use the software.

Copyright Notification

No part may be reproduced or utilized in any form or by any means, electronic or mechanical, including photocopying and microfilm except as authorized by written permission of ETSI.

The content of the PDF version shall not be modified without the written authorization of ETSI.

The copyright and the foregoing restriction extend to reproduction in all media.

© ETSI 2022.
All rights reserved.

Intellectual Property Rights

Essential patents

IPRs essential or potentially essential to normative deliverables may have been declared to ETSI. The declarations pertaining to these essential IPRs, if any, are publicly available for **ETSI members and non-members**, and can be found in ETSI SR 000 314: "*Intellectual Property Rights (IPRs); Essential, or potentially Essential, IPRs notified to ETSI in respect of ETSI standards*", which is available from the ETSI Secretariat. Latest updates are available on the ETSI Web server (<https://ipr.etsi.org/>).

Pursuant to the ETSI Directives including the ETSI IPR Policy, no investigation regarding the essentiality of IPRs, including IPR searches, has been carried out by ETSI. No guarantee can be given as to the existence of other IPRs not referenced in ETSI SR 000 314 (or the updates on the ETSI Web server) which are, or may be, or may become, essential to the present document.

Trademarks

The present document may include trademarks and/or tradenames which are asserted and/or registered by their owners. ETSI claims no ownership of these except for any which are indicated as being the property of ETSI, and conveys no right to use or reproduce any trademark and/or tradename. Mention of those trademarks in the present document does not constitute an endorsement by ETSI of products, services or organizations associated with those trademarks.

DECT™, **PLUGTESTS™**, **UMTS™** and the ETSI logo are trademarks of ETSI registered for the benefit of its Members. **3GPP™** and **LTE™** are trademarks of ETSI registered for the benefit of its Members and of the 3GPP Organizational Partners. **oneM2M™** logo is a trademark of ETSI registered for the benefit of its Members and of the oneM2M Partners. **GSM®** and the GSM logo are trademarks registered and owned by the GSM Association.

Legal Notice

This Technical Specification (TS) has been produced by ETSI 3rd Generation Partnership Project (3GPP).

The present document may refer to technical specifications or reports using their 3GPP identities. These shall be interpreted as being references to the corresponding ETSI deliverables.

The cross reference between 3GPP and ETSI identities can be found under <http://webapp.etsi.org/key/queryform.asp>.

Modal verbs terminology

In the present document "**shall**", "**shall not**", "**should**", "**should not**", "**may**", "**need not**", "**will**", "**will not**", "**can**" and "**cannot**" are to be interpreted as described in clause 3.2 of the [ETSI Drafting Rules](#) (Verbal forms for the expression of provisions).

"**must**" and "**must not**" are **NOT** allowed in ETSI deliverables except when used in direct citation.

Contents

| | |
|--|----|
| Intellectual Property Rights | 2 |
| Legal Notice | 2 |
| Modal verbs terminology..... | 2 |
| Foreword..... | 5 |
| Introduction | 5 |
| 1 Scope | 6 |
| 2 References | 6 |
| 3 Definitions and abbreviations..... | 6 |
| 3.1 Definitions | 6 |
| 3.2 Abbreviations | 6 |
| 4 System overview | 7 |
| 4.1 System Context | 7 |
| 4.2 Compliance rules..... | 7 |
| 5 Information Object Classes | 7 |
| 5.1 Imported information entities and local labels | 7 |
| 5.2 Class diagram | 8 |
| 5.2.1 Attributes and relationships | 8 |
| 5.2.2 Inheritance | 8 |
| 5.3 Information object class definitions | 9 |
| 5.3.1 Antenna | 9 |
| 5.3.1.1 Definition | 9 |
| 5.3.1.2 Attributes..... | 9 |
| 5.3.1.3 Attribute constraints | 9 |
| 5.3.1.4 Notifications..... | 9 |
| 5.3.2 Cell..... | 9 |
| 5.3.2.1 Definition | 9 |
| 5.3.2.2 Attributes..... | 9 |
| 5.3.2.3 Attribute constraints | 9 |
| 5.3.2.4 Notifications..... | 10 |
| 5.3.3 GSMCell | 10 |
| 5.3.3.1 Definition | 10 |
| 5.3.3.2 Attributes..... | 10 |
| 5.3.3.3 Attribute constraints | 10 |
| 5.3.3.4 Notifications..... | 10 |
| 5.3.4 EUTRANCell | 10 |
| 5.3.4.1 Definition | 10 |
| 5.3.4.2 Attributes..... | 10 |
| 5.3.4.3 Attribute constraints | 10 |
| 5.3.4.4 Notifications..... | 10 |
| 5.3.5 Site..... | 11 |
| 5.3.5.1 Definition | 11 |
| 5.3.5.2 Attributes..... | 11 |
| 5.3.5.3 Attribute constraints | 11 |
| 5.3.5.4 Notifications..... | 11 |
| 5.3.6 SiteList | 11 |
| 5.3.6.1 Definition | 11 |
| 5.3.6.2 Attributes..... | 11 |
| 5.3.6.3 Attribute constraints | 11 |
| 5.3.6.4 Notifications..... | 11 |
| 5.3.7 UTRANCell..... | 12 |
| 5.3.7.1 Definition | 12 |
| 5.3.7.2 Attributes..... | 12 |

| | | |
|-------------------------------|---|-----------|
| 5.3.7.3 | Attribute constraints | 12 |
| 5.3.7.4 | Notifications | 12 |
| 5.4 | Information relationship definitions | 12 |
| 5.4.1 | AI (M) | 12 |
| 5.4.1.1 | Definition | 12 |
| 5.4.1.2 | Roles | 12 |
| 5.4.1.3 | Constraints | 12 |
| 5.5 | Information attribute definitions..... | 13 |
| 5.5.1 | Definition and legal values | 13 |
| 5.5.2 | Constraints | 14 |
| 6 | Interface definitions..... | 14 |
| 6.1 | Class diagram representing interfaces | 14 |
| 6.2 | Generic rules | 15 |
| 6.3 | RptOperations_1 Interface (M)..... | 15 |
| 6.3.1 | Operation getPlannedData (M)..... | 15 |
| 6.3.1.1 | Definition | 15 |
| 6.3.1.2 | Input parameters..... | 15 |
| 6.3.1.3 | Output parameters | 15 |
| 6.3.1.4 | Pre-condition..... | 15 |
| 6.3.1.5 | Post-condition | 16 |
| 6.3.1.6 | Exception | 16 |
| Annex A (informative): | Change history | 17 |
| History | | 18 |

Foreword

This Technical Specification has been produced by the 3rd Generation Partnership Project (3GPP).

The contents of the present document are subject to continuing work within the TSG and may change following formal TSG approval. Should the TSG modify the contents of the present document, it will be re-released by the TSG with an identifying change of release date and an increase in version number as follows:

Version x.y.z

where:

- x the first digit:
 - 1 presented to TSG for information;
 - 2 presented to TSG for approval;
 - 3 or greater indicates TSG approved document under change control.
- y the second digit is incremented for all changes of substance, i.e. technical enhancements, corrections, updates, etc.
- z the third digit is incremented when editorial only changes have been incorporated in the document.

Introduction

The present document is part of a TS-family covering the 3rd Generation Partnership Project; Technical Specification Group Services and System Aspects; Telecommunication management; as identified below:

28.667 Radio Planning Tool Access (RPTA) Integration Reference Point (IRP); Requirements

28.668 Radio Planning Tool Access (RPTA) Integration Reference Point (IRP): Information Service (IS)

28.669 Radio Planning Tool Access (RPTA) Integration Reference Point (IRP); Solution Set (SS) definitions

1 Scope

The present document specifies the Radio Planning Tool Access (RPTA) management operations as well as support object classes, attributes and relations that can be communicated between the Service Provider in the RPT and one or several Service Consumers in the NM.

This document specifies the semantics and behaviour of management operations, support object classes, attributes and relations visible across the reference point in a protocol and technology neutral way. It does not define their syntax and encoding.

This IRP allows the NM to read planned site and antenna data from the RPT.

2 References

The following documents contain provisions which, through reference in this text, constitute provisions of the present document.

- References are either specific (identified by date of publication, edition number, version number, etc.) or non-specific.
- For a specific reference, subsequent revisions do not apply.
- For a non-specific reference, the latest version applies. In the case of a reference to a 3GPP document (including a GSM document), a non-specific reference implicitly refers to the latest version of that document *in the same Release as the present document*.

- [1] 3GPP TR 21.905: "Vocabulary for 3GPP Specifications".
- [2] 3GPP TS 23.032: "Universal Geographical Area Description (GAD)".
- [3] 3GPP TS 28.632: "Telecommunication management; Inventory Management (IM) Network Resource Model (NRM) Integration Reference Point (IRP); Information Service (IS)".
- [4] 3GPP TS 28.662: "Telecommunication management; Generic Radio Access Network (RAN) Network Resource Model (NRM) Integration Reference Point (IRP); Information Service (IS)".
- [5] 3GPP TS 28.667: "Telecommunication management; Radio Planning Tool Access (RPTA) Integration Reference Point (IRP); Requirements".
- [6] 3GPP TS 32.150: "Telecommunication management; Integration Reference Point (IRP) Concept and definitions".

3 Definitions and abbreviations

3.1 Definitions

For the purposes of the present document, the terms and definitions given in TR 21.905 [1] and the following apply. A term defined in the present document takes precedence over the definition of the same term, if any, in TR 21.905 [1].

Radio Planning Tool: See TS 28.667 [5].

3.2 Abbreviations

For the purposes of the present document, the abbreviations given in TR 21.905 [1] and the following apply. An abbreviation defined in the present document takes precedence over the definition of the same abbreviation, if any, in TR 21.905 [1].

| | |
|-----|---------------------|
| RPT | Radio Planning Tool |
|-----|---------------------|

| | |
|------|----------------------------------|
| RPTA | Radio Planning Tool (RPT) Access |
| SC | Service Consumer |
| SP | Service Provider |

4 System overview

4.1 System Context

The general definition of the System Context for the present IRP is found in 3GPP TS 32.150 [6], subclause 4.7. The RPT is the SP, the NM is the SC.

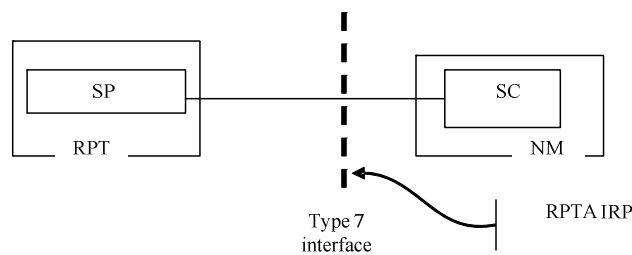


Figure 4.1.1: System Context for Type 7 interface

4.2 Compliance rules

For general definitions of compliance rules related to qualifiers (Mandatory/Optional/Conditional) for *operations*, *notifications* and *parameters* (of operations and notifications) please refer to 3GPP TS 32.150 [6].

A SP that incorporates vendor-specific extensions shall support normal communication with a 3GPP SA5-compliant SC with respect to all Mandatory and Optional managed object classes, attributes, associations, operations, parameters and notifications without requiring the SC to have any knowledge of the extensions.

Given that:

- rules for vendor-specific extensions remain to be fully specified; and
- many scenarios under which SC and SP interwork may exist.

It is recognized that the SC, even though it is not required to have knowledge of vendor-specific extensions, may be required to be implemented with an awareness that extensions can exist and behave accordingly.

5 Information Object Classes

5.1 Imported information entities and local labels

None.

5.2 Class diagram

5.2.1 Attributes and relationships

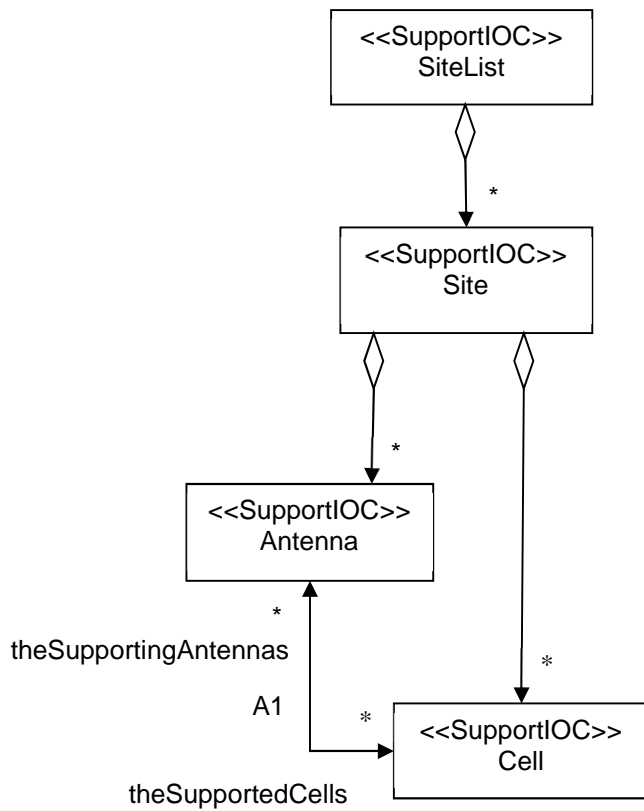


Figure 5.2.1-1: Information Model of the RPTA IRP

5.2.2 Inheritance

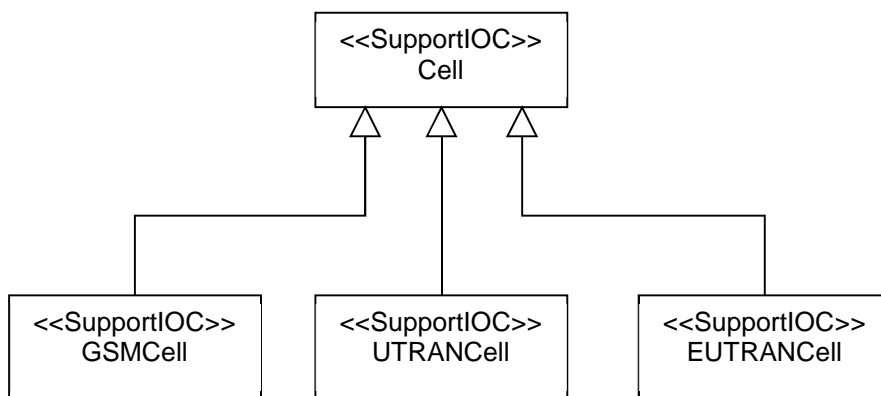


Figure 5.2.2-1: Inheritance diagram

5.3 Information object class definitions

5.3.1 Antenna

5.3.1.1 Definition

This SupportIOC represents an antenna.

| Referenced TS | Requirement label | Comment |
|--------------------|---------------------|---------|
| 3GPP TS 28.667 [5] | REQ-RPT_NRM-FUN-002 | |
| 3GPP TS 28.667 [5] | REQ-RPT_NRM-FUN-003 | |
| 3GPP TS 28.667 [5] | REQ-RPT_NRM-FUN-004 | |

5.3.1.2 Attributes

| Attribute name | Support Qualifier | Read Qualifier | Write Qualifier |
|-------------------------|-------------------|----------------|-----------------|
| antennaId | M | M | - |
| antennaName | M | M | - |
| antennaPatternLabel | M | M | - |
| antennaType | M | M | - |
| antennaLongitude | M | M | - |
| antennaLatitude | M | M | - |
| antennaAltitude | M | M | - |
| antennaBearing | M | M | - |
| antennaMechanicalOffset | M | M | - |
| theSupportedCells | M | M | - |

5.3.1.3 Attribute constraints

None.

5.3.1.4 Notifications

None.

5.3.2 Cell

5.3.2.1 Definition

This SupportIOC represents a cell.

| Referenced TS | Requirement label | Comment |
|--------------------|---------------------|---------|
| 3GPP TS 28.667 [5] | REQ-RPT_NRM-FUN-003 | |
| 3GPP TS 28.667 [5] | REQ-RPT_NRM-FUN-004 | |

5.3.2.2 Attributes

| Attribute name | Support Qualifier | Read Qualifier | Write Qualifier |
|-----------------------|-------------------|----------------|-----------------|
| cellId | M | M | - |
| theSupportingAntennas | M | M | - |

5.3.2.3 Attribute constraints

None.

5.3.2.4 Notifications

None.

5.3.3 GSMCell

5.3.3.1 Definition

This SupportIOC represents a GSM cell.

| Referenced TS | Requirement label | Comment |
|--------------------|---------------------|---------|
| 3GPP TS 28.667 [5] | REQ-RPT_NRM-FUN-005 | |

5.3.3.2 Attributes

| Attribute name | Support Qualifier | Read Qualifier | Write Qualifier |
|----------------|-------------------|----------------|-----------------|
| | | | |

5.3.3.3 Attribute constraints

None.

5.3.3.4 Notifications

None.

5.3.4 EUTRANCell

5.3.4.1 Definition

This SupportIOC represents an E-UTRAN cell.

| Referenced TS | Requirement label | Comment |
|--------------------|---------------------|---------|
| 3GPP TS 28.667 [5] | REQ-RPT_NRM-FUN-005 | |

5.3.4.2 Attributes

| Attribute name | Support Qualifier | Read Qualifier | Write Qualifier |
|----------------|-------------------|----------------|-----------------|
| | | | |

5.3.4.3 Attribute constraints

None.

5.3.4.4 Notifications

None.

5.3.5 Site

5.3.5.1 Definition

This SupportIOC represents a site. A site designates the location of the base station (TR 21.905 [1]), and properties associated to the site such as site address, exact location and site name. In case the antenna is not at the same location as the (rest of the) base station, site designates the location of the main base station equipment.

| Referenced TS | Requirement label | Comment |
|--------------------|---------------------|---------|
| 3GPP TS 28.667 [5] | REQ-RPT_NRM-FUN-001 | |

5.3.5.2 Attributes

| Attribute name | Support Qualifier | Read Qualifier | Write Qualifier |
|----------------|-------------------|----------------|-----------------|
| siteId | M | M | - |
| siteAddress | M | M | - |
| siteName | M | M | - |
| siteLongitude | M | M | - |
| siteLatitude | M | M | - |
| siteAltitude | O | M | - |

5.3.5.3 Attribute constraints

None.

5.3.5.4 Notifications

None.

5.3.6 SiteList

5.3.6.1 Definition

This SupportIOC represents a list of sites.

| Referenced TS | Requirement label | Comment |
|--------------------|---------------------|---------|
| 3GPP TS 28.667 [5] | REQ-RPT_NRM-FUN-001 | |

5.3.6.2 Attributes

| Attribute name | Support Qualifier | Read Qualifier | Write Qualifier |
|----------------|-------------------|----------------|-----------------|
| | | | |

5.3.6.3 Attribute constraints

None.

5.3.6.4 Notifications

None.

5.3.7 UTRANCell

5.3.7.1 Definition

This SupportIOC represents a UTRAN cell.

| Referenced TS | Requirement label | Comment |
|--------------------|---------------------|---------|
| 3GPP TS 28.667 [5] | REQ-RPT_NRM-FUN-005 | |

5.3.7.2 Attributes

| Attribute name | Support Qualifier | Read Qualifier | Write Qualifier |
|----------------|-------------------|----------------|-----------------|
| | | | |

5.3.7.3 Attribute constraints

None.

5.3.7.4 Notifications

None.

5.4 Information relationship definitions

5.4.1 A1 (M)

5.4.1.1 Definition

This association represents the bidirectional relation between Antenna and Cell.

| Referenced TS | Requirement label | Comment |
|--------------------|---------------------|---------|
| 3GPP TS 28.667 [5] | REQ-RPT_NRM-FUN-003 | |
| 3GPP TS 28.667 [5] | REQ-RPT_NRM-FUN-004 | |

5.4.1.2 Roles

| Name | Definition |
|-----------------------|---|
| theSupportingAntennas | This role represents the Antenna instances supporting a Cell instance. |
| theSupportedCells | This role represents the Cell instances supported by an Antenna instance. |

5.4.1.3 Constraints

None.

5.5 Information attribute definitions

5.5.1 Definition and legal values

The following table defines the attributes that are present in the Support Object Classes of the present document.

| Attribute Name | Definition | Information Type / Legal Values |
|-------------------------|--|---------------------------------|
| antennaBearing | The bearing that the antenna is pointing to, see TS 23.032 [2] allowedValues: see TS 23.032 [2] NOTE: Identical to TS 28.662 [4] AntennaFunction::bearing | type: Integer |
| antennaAltitude | The elevation of the antenna above sea level. allowedValues: An integral value representing a number of meters in 0.1 meter increments. NOTE: Identical to TS 28.662 [4] AntennaFunction::height | type: Integer |
| antennaId | Operator defined antenna identifier allowedValues: N/A | type: String |
| antennaLatitude | The latitude of the antenna location based on the World Geodetic System (1984 version) global reference frame (WGS 84). Positive values correspond to north of 0 degrees latitude (northern hemisphere). allowedValues: valid values are described in TS 23.032 [2] NOTE: Identical to TS 28.632 [3] AntennaInventoryUnit::latitude Editor's note: The exact definition is ffs, and needs to be aligned with other definitions of latitude/longitude. | type: Real |
| antennaLongitude | The longitude of the antenna location based on the World Geodetic System (1984 version) global reference frame (WGS 84). Positive values correspond to east of 0 degrees longitude. allowedValues: valid values are described in TS 23.032 [2] NOTE: Identical to TS 28.632 [3] AntennaInventoryUnit::longitude Editor's note: The exact definition is ffs, and needs to be aligned with other definitions of latitude/longitude. | type: Real |
| antennaMechanicalOffset | This is a value representing a non-adjustable tilt value, which is imparted to the antenna due to the physical installation. The actual tilt at any point in time is the summation of mechanicalOffset and retTiltValue. A single integral value corresponding to an angle in degrees between 0 and 360 with a resolution of 0.1 degrees. allowedValues: N/A NOTE: Identical to TS 28.632 [3] AntennaInventoryUnit::mechanicalOffset | type: Integer |
| antennaName | Name of the antenna. It is a free text field. allowedValues: N/A | type: String |
| antennaPatternLabel | The radiation pattern of the antenna, also referred to as antenna pattern. allowedValues: N/A NOTE: Identical to TS 28.632 [3] AntennaInventoryUnit::patternlabel | type: String |
| antennaType | The type of the antenna. Types are e.g. repeaters, remote antennas, power dividers. allowedValues: N/A | Type: String |
| cellId | Operator defined cell identifier. | type: String |
| siteAddress | Address of the site allowedValues: N/A | type: String |

| Attribute Name | Definition | Information Type / Legal Values |
|-----------------------------------|---|---------------------------------|
| siteAltitude | The elevation of the site above sea level. allowedValues: An integral value representing a number of meters in 0.1 meter increments. | type: Integer |
| siteId | Operator defined site identifier. allowedValues: N/A | type: String |
| siteLatitude | The latitude of the site location based on the World Geodetic System (1984 version) global reference frame (WGS 84). Positive values correspond to north of 0 degrees latitude (northern hemisphere). allowedValues: valid values are described in 3GPP TS 23.032 [2] <i>Editor's note: The exact definition is ffs, and needs to be aligned with other definitions of latitude/longitude.</i> | type: Real |
| siteLongitude | The longitude of the site location based on the World Geodetic System (1984 version) global reference frame (WGS 84). Positive values correspond to east of 0 degrees longitude. allowedValues: valid values are described in 3GPP TS 23.032 [2] <i>Editor's note: The exact definition is ffs, and needs to be aligned with other definitions of latitude/longitude.</i> | type: Real |
| siteName | Name of the site. It is a free text field. allowedValues: N/A | type: String |
| Attributes related to role | | |
| theSupportedCells | This attribute carries a set of cellId. | |
| theSupportingAntennas | This attribute carries a set of antennaId. | |

5.5.2 Constraints

None.

6 Interface definitions

6.1 Class diagram representing interfaces

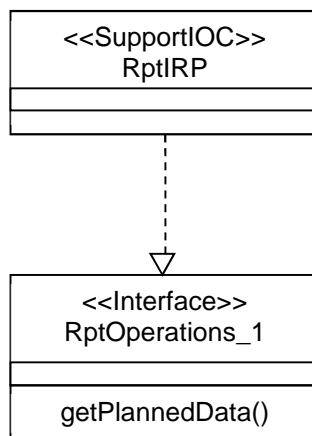


Figure 6.1-1: Class diagram representing interfaces

6.2 Generic rules

Rule 1: Each operation with at least one input parameter supports a pre-condition `valid_input_parameter` which indicates that all input parameters shall be valid with regards to their information type. Additionally, each such operation supports an exception `operation_failed_invalid_input_parameter` which is raised when pre-condition `valid_input_parameter` is false. The exception has the same entry and exit state.

Rule 2: Each operation with at least one optional input parameter supports a set of pre-conditions `supported_optional_input_parameter_xxx` where "xxx" is the name of the optional input parameter and the pre-condition indicates that the operation supports the named optional input parameter. Additionally, each such operation supports an exception `operation_failed_unsupported_optional_input_parameter_xxx` which is raised when (a) the pre-condition `supported_optional_input_parameter_xxx` is false and (b) the named optional input parameter is carrying information. The exception has the same entry and exit state.

Rule 3: Each operation shall support a generic exception `operation_failed_internal_problem` that is raised when an internal problem occurs and that the operation cannot be completed. The exception has the same entry and exit state.

6.3 RptOperations_1 Interface (M)

6.3.1 Operation `getPlannedData` (M)

6.3.1.1 Definition

The NM invokes this operation to read planned data from the RPT.

| Referenced TS | Requirement label | Comment |
|--------------------|---------------------|---------|
| 3GPP TS 28.667 [5] | REQ-RPT_NRM-CON-001 | |

6.3.1.2 Input parameters

| Name | Qualifier | Matching Type | Comment |
|-------|-----------|----------------------------------|---|
| scope | M | Information specifying the scope | This parameter defines the subset of planned data to be returned. In Rel-12 only all planned data can be selected. The absence of an input parameter is equivalent to ALL. The semantics of scope is undefined in Rel-12. |

6.3.1.3 Output parameters

| Name | Qualifier | Matching Information | Comment |
|-------------|-----------|--|---|
| plannedData | M | SiteList | This parameter returns all planned data held by the RPT. The data structure is described by the information model specified in subclause 5. |
| status | M | ENUM (OperationSucceeded, OperationFailed) | If <code>allScopedPlannedDataReturned</code> is true, status = OperationSucceeded. If <code>operation_failed</code> is true, status = OperationFailed. |

6.3.1.4 Pre-condition

`networkPlanned`

| Assertion Name | Definition |
|-----------------------------|---|
| <code>networkPlanned</code> | The network is planned and the planned data is stored and available for reading in the RPT. |

6.3.1.5 Post-condition

allScopedPlannedDataReturned

| Assertion Name | Definition |
|------------------------------|--|
| allScopedPlannedDataReturned | All data selected by the scope input parameter is returned. The planned data in the RPT is not affected by this operation. |

6.3.1.6 Exception

| Assertion Name | Definition |
|------------------|--|
| operation_failed | Condition: The pre-condition is false or the post-condition is false. Returned Information: The output parameter status. Exit state: Entry state. |

Annex A (informative): Change history

| Change history | | | | | | | |
|----------------|-------|-----------|----|-----|-------------------------|--------|--------|
| Date | TSG # | TSG Doc. | CR | Rev | Subject/Comment | Old | New |
| 2014-12 | SA#66 | SP-140793 | | | Presented for approval | 1.2.0 | 2.0.0 |
| | | | | | Version after approval | 2.0.0 | 12.0.0 |
| 2016-01 | SA#70 | | | | Upgrade to Rel-13 (MCC) | 12.0.0 | 13.0.0 |

| Change history | | | | | | | |
|----------------|---------|------|----|-----|-----|--|---------------|
| Date | Meeting | TDoc | CR | Rev | Cat | Subject/Comment | New version |
| 2017-03 | SA#75 | | | | | Promotion to Release 14 without technical change | 14.0.0 |
| 2018-06 | - | - | - | - | - | Update to Rel-15 version (MCC) | 15.0.0 |
| 2020-07 | - | - | - | - | - | Update to Rel-16 version (MCC) | 16.0.0 |
| 2022-03 | - | - | - | - | - | Update to Rel-17 version (MCC) | 17.0.0 |

History

| Document history | | |
|-------------------------|------------|-------------|
| V17.0.0 | April 2022 | Publication |
| | | |
| | | |
| | | |
| | | |