

# ETSI TS 125 446 V15.0.0 (2018-07)



**Universal Mobile Telecommunications System (UMTS);  
MBMS synchronisation protocol (SYNC)  
(3GPP TS 25.446 version 15.0.0 Release 15)**



---

Reference

RTS/TSGR-0325446vf00

---

Keywords

UMTS

**ETSI**

650 Route des Lucioles  
F-06921 Sophia Antipolis Cedex - FRANCE

Tel.: +33 4 92 94 42 00 Fax: +33 4 93 65 47 16

Siret N° 348 623 562 00017 - NAF 742 C  
Association à but non lucratif enregistrée à la  
Sous-Préfecture de Grasse (06) N° 7803/88

---

**Important notice**

The present document can be downloaded from:

<http://www.etsi.org/standards-search>

The present document may be made available in electronic versions and/or in print. The content of any electronic and/or print versions of the present document shall not be modified without the prior written authorization of ETSI. In case of any existing or perceived difference in contents between such versions and/or in print, the only prevailing document is the print of the Portable Document Format (PDF) version kept on a specific network drive within ETSI Secretariat.

Users of the present document should be aware that the document may be subject to revision or change of status.

Information on the current status of this and other ETSI documents is available at

<https://portal.etsi.org/TB/ETSIDeliverableStatus.aspx>

If you find errors in the present document, please send your comment to one of the following services:

<https://portal.etsi.org/People/CommiteeSupportStaff.aspx>

---

**Copyright Notification**

No part may be reproduced or utilized in any form or by any means, electronic or mechanical, including photocopying and microfilm except as authorized by written permission of ETSI.

The content of the PDF version shall not be modified without the written authorization of ETSI.

The copyright and the foregoing restriction extend to reproduction in all media.

© ETSI 2018.

All rights reserved.

**DECT™**, **PLUGTESTS™**, **UMTS™** and the ETSI logo are trademarks of ETSI registered for the benefit of its Members.

**3GPP™** and **LTE™** are trademarks of ETSI registered for the benefit of its Members and of the 3GPP Organizational Partners.

**oneM2M** logo is protected for the benefit of its Members.

**GSM®** and the GSM logo are trademarks registered and owned by the GSM Association.

---

# Intellectual Property Rights

## Essential patents

IPRs essential or potentially essential to normative deliverables may have been declared to ETSI. The information pertaining to these essential IPRs, if any, is publicly available for **ETSI members and non-members**, and can be found in ETSI SR 000 314: *"Intellectual Property Rights (IPRs); Essential, or potentially Essential, IPRs notified to ETSI in respect of ETSI standards"*, which is available from the ETSI Secretariat. Latest updates are available on the ETSI Web server (<https://ipr.etsi.org/>).

Pursuant to the ETSI IPR Policy, no investigation, including IPR searches, has been carried out by ETSI. No guarantee can be given as to the existence of other IPRs not referenced in ETSI SR 000 314 (or the updates on the ETSI Web server) which are, or may be, or may become, essential to the present document.

## Trademarks

The present document may include trademarks and/or tradenames which are asserted and/or registered by their owners. ETSI claims no ownership of these except for any which are indicated as being the property of ETSI, and conveys no right to use or reproduce any trademark and/or tradename. Mention of those trademarks in the present document does not constitute an endorsement by ETSI of products, services or organizations associated with those trademarks.

---

# Foreword

This Technical Specification (TS) has been produced by ETSI 3rd Generation Partnership Project (3GPP).

The present document may refer to technical specifications or reports using their 3GPP identities, UMTS identities or GSM identities. These should be interpreted as being references to the corresponding ETSI deliverables.

The cross reference between GSM, UMTS, 3GPP and ETSI identities can be found under <http://webapp.etsi.org/key/queryform.asp>.

---

# Modal verbs terminology

In the present document "**shall**", "**shall not**", "**should**", "**should not**", "**may**", "**need not**", "**will**", "**will not**", "**can**" and "**cannot**" are to be interpreted as described in clause 3.2 of the [ETSI Drafting Rules](#) (Verbal forms for the expression of provisions).

"**must**" and "**must not**" are **NOT** allowed in ETSI deliverables except when used in direct citation.

# Contents

Intellectual Property Rights .....	2
Foreword.....	2
Modal verbs terminology.....	2
Foreword.....	5
1 Scope .....	6
2 References .....	6
3 Definitions and abbreviations.....	6
3.1 Definitions .....	6
3.2 Abbreviations .....	6
3.4 Specification notations .....	7
4 General .....	7
4.1 General aspects for the SYNC protocol for UTRAN .....	7
4.1.1 General aspects .....	7
4.2 General aspects for the SYNC protocol for E-UTRAN .....	8
4.2.1 General aspects .....	8
5 SYNC protocol version 1 .....	8
5.1 General .....	8
5.1.1 Applicability of SYNC protocol version 1.....	8
5.1.1 Operation of the SYNC protocol .....	9
5.1.2 Interfaces of the SYNC protocol layer.....	9
5.2 SYNC protocol layer services .....	9
5.3 Services Expected from the UP Data Transport layer .....	9
5.4 Elementary procedures .....	9
5.4.1 Transfer of User Data for MBMS procedure .....	9
5.4.1.1 Successful operation.....	9
5.4.1.2 Unsuccessful operation .....	10
5.4.2 Transfer of Synchronisation Information for MBMS procedure (without user data) .....	10
5.4.2.1 Successful operation.....	10
5.4.2.2 Unsuccessful operation .....	11
5.5 Elements for the SYNC protocol.....	11
5.5.1 General.....	11
5.5.2 Frame format for the SYNC protocol .....	12
5.5.2.1 Transfer of Synchronisation Information without payload (SYNC PDU Type 0) .....	12
5.5.2.2 Transfer of User Data for MBMS with uncompressed header (SYNC PDU Type 1).....	12
5.5.2.3 Transfer of User Data for MBMS with compressed header (SYNC PDU Type 2).....	13
5.5.2.4 Transfer of Synchronisation Information with Length of Packets (SYNC PDU Type 3).....	14
5.5.3 Coding of information elements in frames .....	16
5.5.3.1 PDU Type .....	16
5.5.3.2 Timestamp.....	17
5.5.3.3 Packet Number .....	17
5.5.3.4 Elapsed Octet Counter.....	17
5.5.3.5 Total Number Of Packet .....	17
5.5.3.6 Total Number Of Octet .....	17
5.5.3.7 PDCP Information.....	17
5.5.3.8 IPv6 Indicator.....	18
5.5.3.9 Uncompressed Payload IP header .....	18
5.5.3.10 Header CRC .....	18
5.5.3.11 Payload CRC.....	18
5.5.3.12 Padding .....	18
5.5.3.13 Spare .....	18
5.5.3.14 Spare extension .....	18
5.5.3.15 Payload fields .....	19
5.5.3.16 Length of the N <sup>th</sup> Packet.....	19
5.5.4 Timers .....	19

5.6 Handling of unknown, unforeseen and erroneous protocol data ..... 19

5.6.1 General..... 19

5.6.2 CRC Calculation..... 19

5.6.3 Relation between input and output of the Cyclic Redundancy Check..... 19

**Annex A (informative): Change history .....20**

History .....21

---

# Foreword

This Technical Specification has been produced by the 3<sup>rd</sup> Generation Partnership Project (3GPP).

The contents of the present document are subject to continuing work within the TSG and may change following formal TSG approval. Should the TSG modify the contents of the present document, it will be re-released by the TSG with an identifying change of release date and an increase in version number as follows:

Version x.y.z

where:

- x the first digit:
  - 1 presented to TSG for information;
  - 2 presented to TSG for approval;
  - 3 or greater indicates TSG approved document under change control.
- y the second digit is incremented for all changes of substance, i.e. technical enhancements, corrections, updates, etc.
- z the third digit is incremented when editorial only changes have been incorporated in the document.

---

# 1 Scope

The present document specifies the MBMS Synchronisation Protocol. For the release of this specification it is used on Iu towards UTRAN and M1 towards E-UTRAN.

---

## 2 References

The following documents contain provisions which, through reference in this text, constitute provisions of the present document.

- References are either specific (identified by date of publication, edition number, version number, etc.) or non-specific.
- For a specific reference, subsequent revisions do not apply.
- For a non-specific reference, the latest version applies. In the case of a reference to a 3GPP document (including a GSM document), a non-specific reference implicitly refers to the latest version of that document *in the same Release as the present document*.

- [1] 3GPP TR 21.905: "Vocabulary for 3GPP Specifications".
  - [2] 3GPP TS 25.410: "UTRAN Iu interface: General Aspects and Principles".
  - [3] 3GPP TS 25.323: "Packet Data Convergence Protocol (PDCP) specification".
  - [4] 3GPP TS 25.346: "Introduction of the Multimedia Broadcast Multicast Service (MBMS) in the Radio Access Network (RAN); Stage 2".
  - [5] 3GPP TS 36.440: "Evolved Universal Terrestrial Radio Access Network (E-UTRAN); General aspects and principles for interfaces supporting Multimedia Broadcast Multicast Service (MBMS) within E-UTRAN".
  - [6] 3GPP TS 36.300: "Evolved Universal Terrestrial Radio Access Network (E-UTRAN); Overall description".
- 

## 3 Definitions and abbreviations

### 3.1 Definitions

For the purposes of the present document, the terms and definitions given in TR 21.905 [1] and the following apply. A term defined in the present document takes precedence over the definition of the same term, if any, in TR 21.905 [1].

**RAN Access interface:** interface between the Core Network and the Radio Access Network.

**RAN Access node:** termination point of the RAN Access interface at the Radio Access Network.

**MBMS RAB:** denotes the Radio Access data bearer together with the RAN Access Interface data bearer for MBMS service user data transmission.

### 3.2 Abbreviations

For the purposes of the present document, the abbreviations given in TR 21.905 [1] and the following apply. An abbreviation defined in the present document takes precedence over the definition of the same abbreviation, if any, in TR 21.905 [1].

MRNC	MBMS Master RNC (as specified in TS 25.346 [4])
SC-PTM	Single Cell – Point To Multipoint
SYNC	MBMS synchronisation protocol

### 3.4 Specification notations

For the purposes of the present document, the following notations apply:

- Procedure      When referring to a procedure in the specification the Procedure Name is written with the first letters in each word in upper case characters followed by the word "procedure", e.g. Iu Rate Control procedure.
- Frame          When referring to a control or data frame in the specification, the CONTROL/DATA FRAME NAME is written with all letters in upper case characters followed by the words "control/data frame", e.g. TIME ALIGNMENT control frame.
- IE              When referring to an information element (IE) in the specification the *Information Element Name* is written with the first letters in each word in upper case characters and all letters in *Italic font* followed by the abbreviation "IE", e.g. *Frame Number* IE.
- Value of an IE    When referring to the value of an information element (IE) in the specification the "Value" is written as it is specified in subclause 5.6.3 enclosed by quotation marks, e.g. "0" or "255".

## 4 General

### 4.1 General aspects for the SYNC protocol for UTRAN

#### 4.1.1 General aspects

The MBMS Synchronisation protocol (SYNC) is located in the User plane of the Radio Network layer over the Iu interface: the Iu UP protocol layer.

The SYNC protocol for UTRAN is used to convey user data associated to MBMS Radio Access Bearers.

One SYNC protocol instance is associated to one MBMS RAB and one MBMS RAB only. If several MBMS RABs are established towards one given UE, then these MBMS RABs make use of several SYNC protocol instances.

SYNC protocol instances exist at Iu access point as defined (TS 25.410 [2]) i.e. at CN and UTRAN.

Whenever an MBMS RAB requires transfer of user data in the Iu UP, an Iu UP protocol instance exists at each Iu interface access points. These Iu UP protocol instances are established and released together with the associated MBMS RAB.

The following figure illustrates the logical placement of the SYNC protocol layer and the placement of the Data Streams sources outside of the Access Stratum.

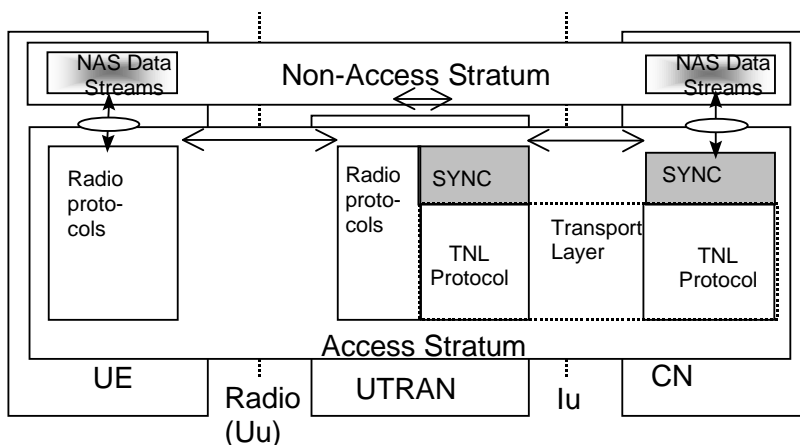


Figure 4.1.1-1: SYNC protocol layer occurrence in UTRAN overall architecture (User Plane View)



## 4.2 General aspects for the SYNC protocol for E-UTRAN

### 4.2.1 General aspects

The MBMS Synchronisation protocol (SYNC) is located in the User plane of the Radio Network layer over the M1 interface: the M1 UP protocol layer.

The SYNC protocol for E-UTRAN is used to convey user data associated to MBMS Radio Access Bearers.

One SYNC protocol instance is associated to one MBMS E-RAB and one MBMS E-RAB only.

SYNC protocol instances exist at M1 access point as defined (TS 36.440 [5]) i.e. at EPC and E-UTRAN.

Whenever an MBMS E-RAB requires transfer of user data in the M1 UP, an M1 UP protocol instance exists at each M1 interface access points. These M1 UP protocol instances are established and released together with the associated MBMS E-RAB.

The following figure illustrates the logical placement of the SYNC protocol layer and the placement of the Data Streams sources outside of the Access Stratum.

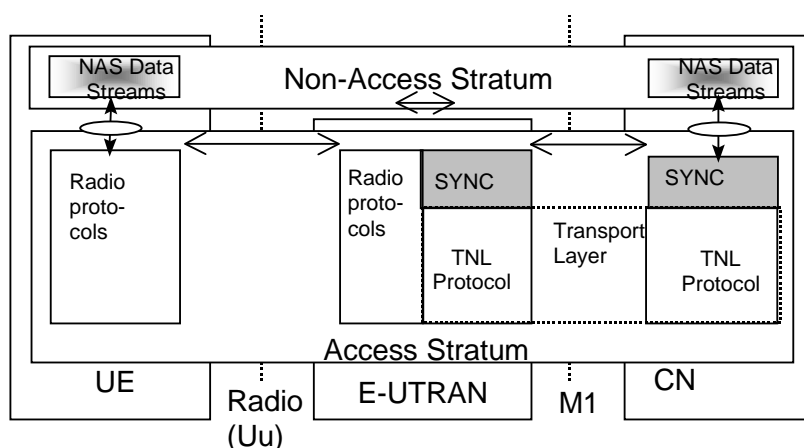


Figure 4.2.1-1: SYNC protocol layer occurrence in E-UTRAN overall architecture (User Plane View)

## 5 SYNC protocol version 1

### 5.1 General

#### 5.1.1 Applicability of SYNC protocol version 1

This version of the specification specifies the SYNC protocol for UTRAN and E-UTRAN. It is on top of TNL in Iu (UTRAN) and M1 (E-UTRAN) user plane, i.e. Iu userplane TNL transports SYNC protocol PDUs over the Iu interface, M1 userplane TNL transports SYNC protocol PDUs over the M1 interface.

As a specification convention, within this specification, the interface between the Core Network and the Radio Access Network is denoted as the “RAN Access Interface”, the termination point at the Radio Access Network is denoted as “RAN Access Node”, the termination point at the Core Network is denoted as “Core Network” (CN). Further, “MBMS RAB” denotes the Radio Access data bearer together with the RAN Access Interface data bearer for MBMS service user data transmission.

For the application of the SYNC protocol to UTRAN, the RAN Access Interface is the Iu interface, the RAN Access Node is the RNC.

For the application of the SYNC protocol to E-UTRAN, the RAN Access Interface is the M1 interface, the RAN Access Node is the eNB.

### 5.1.1 Operation of the SYNC protocol

The SYNC protocol layer is present for data streams that originate in the CN and carry additional information within a specific userplane-frame.

The two strata communicate through a Service Access Point for Non Access Stratum (NAS) Data Streams transfer.

### 5.1.2 Interfaces of the SYNC protocol layer

As part of the Access Stratum responsibility, the SYNC protocol layer provides the services and functions that are necessary to handle non access stratum data streams for MBMS. The SYNC protocol layer is providing these services to the UP upper layers through a Dedicated Service Access Point used for Information Transfer.

The SYNC protocol layer is using services of the Transport layers in order to transfer user plane PDUs over the RAN Access interface.

## 5.2 SYNC protocol layer services

The following functions are needed to support the SYNC protocol:

- Transfer of user data along with synchronisation information;
- Transfer of synchronisation information without user data.

## 5.3 Services Expected from the UP Data Transport layer

The SYNC protocol layer expects the following services from the Transport Network Layer:

- Transfer of user data.
- No flow control.

## 5.4 Elementary procedures

### 5.4.1 Transfer of User Data for MBMS procedure

#### 5.4.1.1 Successful operation

The purpose of the Transfer of User Data procedure for MBMS is to transfer RAN Access Interface UP frames from the RAN Access interface UP protocol layers at CN to the RAN Access interface UP protocol layer at the RAN Access Node. One RAN Access interface UP instance is associated to a single MBMS RAB only.

The Transfer of User Data procedure is invoked whenever user data for that particular RAB needs to be sent across the Radio Access interface.

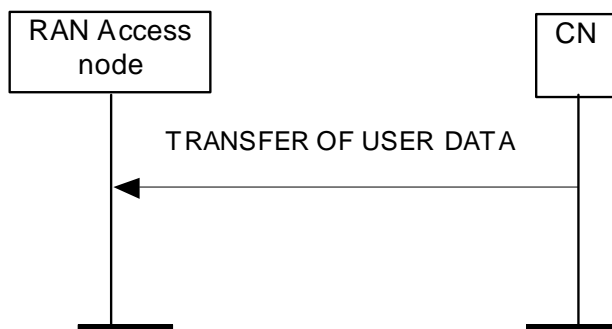
The NAS Data Streams specific functions make the padding of the payload (if needed) so that the Radio Access interface UP frame payload will be an integer number of octets. Then the NAS Data Streams specific functions perform, if needed, CRC calculation of the Iu/M1 frame payload and passes the Radio Access interface UP frame payload down to the Frame Handler function.

The Frame Handler function within the CN retrieves the packet counter and octet counter value from its internal memory, formats the frame header and frame payload into the appropriate PDU Type and sends the Radio Access interface UP frame PDU to the lower layers for transfer across the Radio Access interface. If the user data is provided with compressed IP header, the Radio Access interface UP frame contains PDCP information and the uncompressed IP header.

The Frame Handler function within the CN is also responsible for appropriate setting of the Time Stamp value in order to allow all RAN Access nodes to submit the MBMS user data in a synchronised manner.

Upon reception of a user data frame, the RAN Access interface UP protocol layer within the RAN Access node checks the consistency of the RAN Access interface UP frame as follows:

- The Frame Handler function checks the consistency of the frame header and the consistency of the packet counter value.
- Then the RAN Access node utilises the time stamp information to schedule the user data on the radio interface on the next TTI for UTRAN or MCH scheduling period for E-UTRAN as defined in TS 36.300 [6].



**Figure 5.4.1.1-1. Successful Transfers of User Data.**

#### 5.4.1.2 Unsuccessful operation

If multiple consecutive RAN Access interface UP frames carrying the user data are incorrectly formatted or cannot be correctly treated by the receiving RAN Access interface UP protocol layer, or if multiple consecutive frames loss is detected due to gaps in the sequence of the received frame numbers, the RAN Access node shall, if packet length information in Type 3 is not provided,

- in case the RAN Access Interface UP is the Iu UP,
  - cease to provide user data to the radio interface protocol entities and wait until the next synchronisation sequence if soft combining and MBSFN are used, or until the next scheduling transmission interval if the RNC acts as an MRNC and TDM multiplexing is used, as described in TS 25.346 [4].
- in case the RAN Access Interface UP is the M1 UP and MBSFN is used,
  - cease to provide user data to the radio interface protocol entities and wait until the next dynamic scheduling interval, as described in TS 36.300 [6].
- in case the RAN Access Interface UP is the M1 UP and SC-PTM is used,
  - provide other correctly received user data to the radio interface protocol entities, as described in TS 36.300 [6].

If packet length information in Type 3 is provided, the RAN Access nodes could cease to provide user data to the radio interface protocol entities for those lost subframes.

### 5.4.2 Transfer of Synchronisation Information for MBMS procedure (without user data)

#### 5.4.2.1 Successful operation

The purpose of the Transfer of Synchronisation Information for MBMS procedure is to transfer synchronisation information from the CN to the RAN Access node at the end of each synchronization sequence (see TS 25.346 [4], TS 36.300 [6]) to improve the RAN Access node resynchronization in case of packet loss.

The Frame Handler function within the CN retrieves the synchronisation time stamp from its internal clock and the total packet counter and total octet counter from its internal memory, formats the frame header and frame payload into the appropriate PDU Type and sends the RAN Access interface UP frame PDU to the lower layers for transfer across the RAN Access interface.

If there is no data frame in a synchronization sequence, synchronization information shall still be transmitted.

Furthermore, the SYNC PDU towards RAN Access node could contain length of each packet if supported.

Upon reception of a user data frame, the RAN Access interface UP protocol layer checks the consistency of the RAN Access interface UP frame as follows:

- The Frame Handler function checks the consistency of the frame header and the consistency of the synchronisation time stamp, total packet counter, total octet counter and packets length counter value if contained.

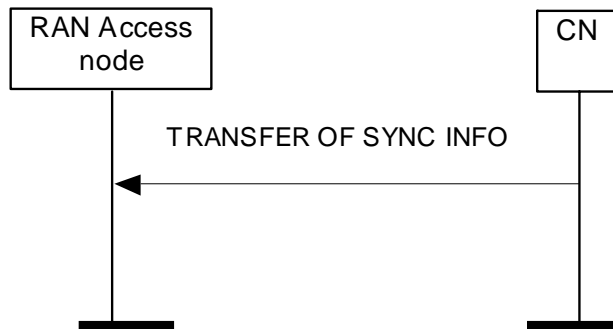


Figure 5.4.2.1-1. Successful Transfers of Synchronisation Information.

### 5.4.2.2 Unsuccessful operation

If the RAN Access interface UP frame without user data is incorrectly formatted or cannot be correctly treated by the receiving RAN Access interface UP protocol layer, the RAN Access interface UP protocol layer shall either discard the frame or pass it to the upper layers with a frame classification indicating a corrupted frame.

## 5.5 Elements for the SYNC protocol

### 5.5.1 General

In the present document the structure of frames will be specified by using figures similar to Figure 5.5.1-1.

Bits								Number of Octets		
7	6	5	4	3	2	1	0			
Field 1				Field 2				1	Octet 1	Header part
Field 3						Field 4		2	Octet 2	
Field 4 continue				Spare					Octet 3	
Field 6								2	Octet 4	Payload part
Field 6 continue				Padding					Octet 5	
Spare extension								0-m		

Figure 5.5.1-1. Example frame format.

Unless otherwise indicated, fields which consist of multiple bits within an octet will have the most significant bit located at the higher bit position (indicated above frame in Figure 5.5.1-1). In addition, if a field spans several octets, most significant bits will be located in lower numbered octets (right of frame in Figure 5.5.1-1).

On the Iu/M1 interface, the frame will be transmitted starting from the lowest numbered octet. Within each octet, the bits are sent according decreasing bit position (bit position 7 first).

Spare bits should be set to "0" by the sender and should not be checked by the receiver.

The header part of the frame is always an integer number of octets. The payload part is octet aligned (by adding 'Padding' when needed).

The receiver should be able to remove an additional spare extension field that may be present at the end of a frame. See description of Spare extension field.

## 5.5.2 Frame format for the SYNC protocol

### 5.5.2.1 Transfer of Synchronisation Information without payload (SYNC PDU Type 0)

This Frame Format is defined to transfer synchronisation information over the RAN Access Interface UP without user data payload.

The following shows the SYNC frame structure for PDU TYPE 0 data frame of the RAN Access Interface UP protocol at the SAP towards the transport layers (TNL-SAP).

Bits								Number of Octets	
7	6	5	4	3	2	1	0		
PDU Type (=0)				spare				1	Frame Control Part
Time Stamp								2	
Packet Number								2	
Elapsed Octet Counter								4	
Total Number Of Packet								3	
Total Number Of Octet								5	
Header CRC						Padding		1	Frame Check Sum Part

**Figure 5.5.2.1-1. SYNC PDU Type 0 Format.**

The SYNC PDU TYPE 0 data frame is made of two parts:

- 1) SYNC Frame Control part (fixed size);
- 2) SYNC Frame Check Sum part (fixed size);

### 5.5.2.2 Transfer of User Data for MBMS with uncompressed header (SYNC PDU Type 1)

This Frame Format is defined to transfer user data over the RAN Access Interface UP for user data with uncompressed header.

The following shows the SYNC frame structure for PDU TYPE 1 data frame of the RAN Access Interface UP protocol at the SAP towards the transport layers (TNL-SAP).

Bits								Number of Octets	
7	6	5	4	3	2	1	0		
PDU Type (=1)				spare				1	Frame Control Part
Time Stamp								2	
Packet Number								2	
Elapsed Octet Counter								4	
Header CRC				Payload CRC				2	Frame Check Sum Part
Payload CRC									
Payload Fields								1-n	Frame Payload part
Payload Fields				Padding					
Spare extension								0-4	

**Figure 5.5.2.2-1. SYNC PDU Type 1 Format.**

The SYNC PDU TYPE 1 data frame is made of three parts:

- 1) SYNC Frame Control part (fixed size);
- 2) SYNC Frame Check Sum part (fixed size);
- 3) SYNC Frame Payload part (SDU sizes rounded up to octets [Note: this does not consider the usage of spare extension field]).

### 5.5.2.3 Transfer of User Data for MBMS with compressed header (SYNC PDU Type 2)

This Frame Format is defined to transfer user data over the RAN Access Interface UP for user data with compressed header.

The following shows the SYNC frame structure for PDU TYPE 2 data frame of the RAN Access Interface UP protocol at the SAP towards the transport layers (TNL-SAP).

For this version of the specification, SYNC PDU TYPE 2 is only applicable if the RAN Access Interface UP is the Iu UP, it shall not be used over M1.

Bits								Number of Octets	
7	6	5	4	3	2	1	0		
PDU Type (=2)				spare			IPv6 indic	1	Frame Control Part
Time Stamp								2	
Packet Number								2	
Elapsed Octet Counter								4	
PDCP Information								1	
Uncompressed Payload IP header								20(40)	
Header CRC					Payload CRC			2	Frame Check Sum Part
Payload CRC									
Payload Fields								1-n	Frame Payload part
Payload Fields				Padding					
Spare extension								0-4	

**Figure 5.5.2.3-1. SYNC PDU Type 2 Format.**

The SYNC PDU TYPE 2 data frame is made of three parts:

- 1) SYNC Frame Control part (fixed size);
- 2) SYNC Frame Check Sum part (fixed size);
- 3) SYNC Frame Payload part (SDU sizes rounded up to octets [Note: this does not consider the usage of spare extension field]).

#### 5.5.2.4 Transfer of Synchronisation Information with Length of Packets (SYNC PDU Type 3)

This Frame Format is defined to transfer synchronisation information over the RAN Access Interface UP with Length of Packets.

The following shows the SYNC frame structure for PDU TYPE 3 data frame of the RAN Access Interface UP protocol at the SAP towards the transport layers (TNL-SAP).

Bits								Number of Octets	
7	6	5	4	3	2	1	0		
PDU Type (=3)				spare				1	Frame Control Part
Time Stamp								2	
Packet Number								2	
Elapsed Octet Counter								4	
Total Number Of Packet								3	
Total Number Of Octet								5	
Header CRC				Payload CRC				2	Frame Check Sum Part
Payload CRC									
Length of the 1 <sup>st</sup> Packet								1.5* (Packet Number -1) + 2	Frame Payload part
Length of the 1 <sup>st</sup> Packet (cont)				Length of 2 <sup>nd</sup> packet					
...									
Length of the N <sup>th</sup> Packet									
Length of the N <sup>th</sup> Packet (cont)				Padding					
Spare extension									

Figure 5.5.2.4-1. SYNC PDU Type 3 Format (Odd number of packets, i.e. N=1, 3, 5, ...)



Bits								Number of Octets	
7	6	5	4	3	2	1	0		
PDU Type (=3)				spare				1	Frame Control Part
Time Stamp								2	
Packet Number								2	
Elapsed Octet Counter								4	
Total Number Of Packet								3	
Total Number Of Octet								5	
Header CRC				Payload CRC				2	Frame Check Sum Part
Payload CRC									
Length of the 1 <sup>st</sup> Packet								1.5* Packet Number	Frame Payload part
Length of the 1 <sup>st</sup> Packet (cont)				Length of the 2 <sup>nd</sup> Packet					
...									
Length of the N <sup>th</sup> Packet									
Spare extension								0-4	

**Figure 5.5.2.4-2. SYNC PDU Type 3 Format (Even number of packets, i.e. N=2, 4, 6, ...)**

The SYNC PDU TYPE 3 data frame is made of three parts:

- 1) SYNC Frame Control part (fixed size);
- 2) SYNC Frame Check Sum part (fixed size);
- 3) SYNC Frame Payload part (variable size); the size of the SYNC Frame Payload part is the length of the *Length of the N<sup>th</sup> Packet IE* in octets = 1.5\* (Packet Number - 1) + 2 + the length of Spare Extension, if the number of packets is odd in the synchronization sequence; the length of the *Length of the N<sup>th</sup> Packet IE* in octets = 1.5\* Packet Number + the length of Spare Extension, if the number of packets is even in the synchronization sequence.

### 5.5.3 Coding of information elements in frames

#### 5.5.3.1 PDU Type

**Description:** The PDU type indicates the structure of the SYNC frame. The field takes the value of the PDU Type it identifies: i.e. "0" for PDU Type 0. The PDU type is in bit 4 to bit 7 in the first octet of the frame.

**Value range:** {0=synchronisation frame without payload, 1=user data with synchronisation frame for uncompressed headers, 2=user data with synchronisation frame for compressed headers, 3=synchronisation frame with Length of Packets, 4-15=reserved for future PDU type extensions }

**Field length:** 4 bits

### 5.5.3.2 Timestamp

**Description:** Relative time value for the starting time of a synchronization sequence within the synchronisation period.

**Value range:** {0...60000-1} Unit: multiples of 10ms.

Note: The value range allows for a synchronisation period of 600s.

**Field length:** 2 octets

### 5.5.3.3 Packet Number

**Description:** This parameter indicates the number of elapsed SYNC PDUs cumulatively within the synchronization sequence. It helps the RAN Access node to notice the loss of SYNC PDUs. Additionally it is used to reorder the PDUs in the RAN Access node. The Packet number is reset at the end of every synchronisation sequence, and is set to 0 for the 1<sup>st</sup> SYNC PDU of every synchronisation sequence. SYNC PDUs of Type 0 and Type 3 are not counted by this parameter.

**Value range:** {0..2<sup>16</sup>-1}.

**Field length:** 2 octets.

### 5.5.3.4 Elapsed Octet Counter

**Description:** This parameter indicates the number of elapsed cumulative octets cumulatively within one synchronisation sequence. It helps the RAN Access node to know how many packets were not received in case of packet loss. This counter is reset at the end of every synchronisation sequence, and is set to 0 for the 1<sup>st</sup> SYNC PDU of every synchronisation sequence. This parameter does not count the header part of the SYNC PDU. Octets of SYNC PDUs of Type 0 and Type 3 are not counted by this parameter.

**Value range:** {0..2<sup>32</sup>-1}.

**Field length:** 4 octets.

### 5.5.3.5 Total Number Of Packet

**Description:** This parameter indicates cumulatively the number of the packets for the MBMS service within one synchronization period. SYNC PDUs of Type 0 and Type 3 are not counted by this parameter.

**Value range:** {0..2<sup>24</sup>-1}.

Note: In case of soft combining and MBSFN(except in case the RNC acts as an MRNC and TDM multiplexing is used), the parameter shall be ignored in RNC.

**Field length:** 3 octets.

### 5.5.3.6 Total Number Of Octet

**Description:** This parameter indicates cumulatively the number of the octets for the MBMS service within one synchronization period. This parameter does not count the header part of the SYNC PDU. Octets of SYNC PDUs of Type 0 and Type 3 are not counted by this parameter.

**Value range:** {0..2<sup>40</sup>-1}.

Note: In case of soft combining and MBSFN(except in case the RNC acts as an MRNC and TDM multiplexing is used), the parameter shall be ignored in RNC.

**Field length:** 5 octets.

### 5.5.3.7 PDCP Information

**Description:** This parameter contains PDCP Information as specified in TS 25.323 [3].

**Value range:** as specified in TS 25.323 [3].

**Field length:** 1 octet.

### 5.5.3.8 IPv6 Indicator

**Description:** This parameter indicates whether the Uncompressed Payload IP header is of IPv6 type.

**Value range:** {0=IPv4, 1=IPv6}.

**Field length:** 1 bit.

### 5.5.3.9 Uncompressed Payload IP header

**Description:** This parameter provides the uncompressed IP header of the payload.

**Value range:** {any value}

**Field length:** 20 octets if IPv6 Indicator=0, 40 octets if IPv6 Indicator=1.

### 5.5.3.10 Header CRC

**Description:** This field contains the CRC of all fields in Frame Control Part. The CRC is a 6-bit checksum based on the generator polynomial  $G(D) = D^6 + D^5 + D^3 + D^2 + D^1 + 1$ , see subclause 5.6.2. With this CRC all error bursts shorter than 7 bits are detected, as well as all odd number of bits faulty (and two-bit faults) when the protected area is shorter than 24 bits, (max 3 octets).

**Field length:** 6 bits.

### 5.5.3.11 Payload CRC

**Description:** This field contains the CRC of all the fields (including Padding and possible Spare extension) of the Frame Payload Part. The CRC is a 10 bit checksum based on the generator polynomial  $G(D) = D^{10} + D^9 + D^5 + D^4 + D^1 + 1$ , see subclause 5.6.2. With this CRC all error bursts shorter than 11 bits are detected, as well as all odd number of bits faulty (and two-bit faults) when the protected area is shorter than 500 bits (max 62 octets).

**Field length:** 10 bits.

### 5.5.3.12 Padding

**Description:** This field is an additional field used to make the frame header or payload part an integer number of octets when needed. Padding is set to "0" by the sender and is not interpreted by the receiver.

**Value range:** {0–127}.

**Field length:** 0–7 bits.

### 5.5.3.13 Spare

**Description:** The spare field is set to "0" by the sender and should not be interpreted by the receiver. This field is reserved for later versions.

**Value range:** (0– $2^n-1$ ).

**Field Length:** n bits.

### 5.5.3.14 Spare extension

**Description:** The spare extension field is reserved for extension in later versions. It shall not be sent. The receiver should be capable of receiving a spare extension. The spare extension should not be interpreted by the receiver since in later versions of the present document additional new fields might be added in place of the spare extension. The spare extension can be an integer number of octets carrying new fields or additional information; the maximum length of the spare extension field (m) depends on the PDU type.

**Value range:** 0– $2^{m*8}-1$ .

**Field Length:** 0–m octets. For PDU Types in the set {1,2,3}, m=4.

### 5.5.3.15 Payload fields

**Description:** This field contains the payload of the MBMS user data.

**Value range:** {any value}.

**Field length:** n bits

### 5.5.3.16 Length of the N<sup>th</sup> Packet

**Description:** This parameter indicates the length of the SYNC PDU within the synchronization sequence in octets. It helps the RAN Access node to recover from de-synchronization in case of the loss of consecutive SYNC PDUs.

**Value range:**  $\{0..2^{12}-1\}$

**Field length:** 12 bits

## 5.5.4 Timers

not applicable

## 5.6 Handling of unknown, unforeseen and erroneous protocol data

### 5.6.1 General

void

### 5.6.2 CRC Calculation

The parity bits are generated by one of the following cyclic generator polynomials:

$$g_{\text{CRC6}}(D) = D^6 + D^5 + D^3 + D^2 + D^1 + 1;$$

$$g_{\text{CRC10}}(D) = D^{10} + D^9 + D^5 + D^4 + D^1 + 1.$$

Denote the bits to be protected of a frame by  $a_1, a_2, a_3, \dots, a_{A_i}$  ( $a_1$  being the bit with the highest bit position in the first octet), and the parity bits by  $p_1, p_2, p_3, \dots, p_{L_i}$ .  $A_i$  is the length of the protected data and  $L_i$  is 6 or 10 depending on the CRC length.

The encoding is performed in a systematic form, which means that in GF(2), the polynomial

$$a_1 D^{A_i+5} + a_2 D^{A_i+4} + \dots + a_{A_i} D^6 + p_1 D^5 + p_2 D^4 + \dots + p_5 D^1 + p_6$$

yields a remainder equal to 0 when divided by  $g_{\text{CRC6}}(D)$  and the polynomial

$$a_1 D^{A_i+9} + a_2 D^{A_i+8} + \dots + a_{A_i} D^{10} + p_1 D^9 + p_2 D^8 + \dots + p_9 D^1 + p_{10}$$

yields a remainder equal to 0 when divided by  $g_{\text{CRC10}}(D)$ . If  $A_i = 0$ ,  $p_1 = p_2 = p_3 = \dots = p_{L_i} = 0$ .

### 5.6.3 Relation between input and output of the Cyclic Redundancy Check

The protected bits are left unchanged in the frame. The parity bits for the Header CRC are put in the Header CRC field with  $p_1$  being the highest bit position of the first octet of the Header CRC field. The parity bits for the Payload CRC are put in the Payload CRC field with  $p_1$  being the highest bit position of the first octet of the Payload CRC field.

## Annex A (informative): Change history

Change history							
Date	TSG #	TSG Doc.	CR	Rev	Subject/Comment	Old	New
12/2008	42	RP-080831			Presented to TSG-RAN for approval		1.0.0
12/2008	42	RP-080831			approved at TSG-RAN#42 and placed under change control	1.0.0	8.0.0
12/2009	46	RP-091182	0002	1	Ignorance of Total Number Of Packet and Total Number Of Octet in case of Soft Combining and MBSFN	8.0.0	8.1.0
12/2009	46	RP-091182	0003	2	Correction for SYNC Protocol	8.0.0	8.1.0
12/2009	-	-	-	-	Creation of version 9.0.0 based on v/ 8.1.0	8.1.0	9.0.0
12/2009	46	RP-091190	0001	2	Reusing SYNC for LTE	8.1.0	9.0.0
12/2009	46	RP-091190	0004		SYNC PDU TYPE2 not applicable for LTE MBMS	8.1.0	9.0.0
12/2009	46	RP-091190	0005	1	CR on Mechanism for Consecutive Packet Loss in 25.446	8.1.0	9.0.0
03/2010	47	RP-100227	0006	4	Clarification on Total counter frame	9.0.0	9.1.0
03/2010	47	RP-100226	0007		Update Description for LTE MBMS Multiple Consecutive Packet Loss	9.0.0	9.1.0
03/2010	47	RP-100226	0008	1	Small Corrections/Improvements for SYNC	9.0.0	9.1.0
03/2010	47	RP-100226	0010	1	Corrections on Packet Number	9.0.0	9.1.0
06/2010	48	RP-100597	0011		Correction to MBMS scheduling terminology	9.1.0	9.2.0
03/2011	SP-49	SP-100629			Clarification on the use of References (TS 21.801 CR#0030)	9.2.0	9.2.1
03/2011					Created version 10.0.0 based on v. 9.2.1	9.2.1	10.0.0
06/2011	52	RP-110686	0012	1	Specification Cleanup for Rel-10	10.0.0	10.1.0
12/2011	54	RP-111650	0013	1	Correction on the Length of Spare Extension	10.1.0	10.2.0
12/2011	54	RP-111650	0014	1	Correction on the Spare Extension	10.1.0	10.2.0
09/2012	-				Update to Rel-11 version (MCC)	10.2.0	11.0.0
09/2014					Update to Rel-12 version (MCC)	11.0.0	12.0.0
12/2014	66	RP-142093	0020	1	Rapporteur Review	12.0.0	12.1.0
12/2015	70	RP-152101	0021	2	Clarification on muting behavior in SC-PTM	12.1.0	13.0.0
03/2016	71	RP-160447	0023	1	Clarification on SYNC	13.0.0	13.1.0

Change history							
Date	Meeting	TDoc	CR	Rev	Cat	Subject/Comment	New version
2017-03	SA#75					Promotion to Release 14 without technical change	14.0.0
2018-07	SA#80	-	-	-	-	Promotion to Release 15 without technical change	15.0.0

---

# History

<b>Document history</b>		
V15.0.0	July 2018	Publication