

ETSI TS 125 171 V13.0.0 (2016-01)



**Universal Mobile Telecommunications System (UMTS);
Requirements for support of
Assisted Global Positioning System (A-GPS);
Frequency Division Duplex (FDD)
(3GPP TS 25.171 version 13.0.0 Release 13)**



Reference

RTS/TSGR-0425171vd00

Keywords

UMTS

ETSI

650 Route des Lucioles
F-06921 Sophia Antipolis Cedex - FRANCE

Tel.: +33 4 92 94 42 00 Fax: +33 4 93 65 47 16

Siret N° 348 623 562 00017 - NAF 742 C
Association à but non lucratif enregistrée à la
Sous-Préfecture de Grasse (06) N° 7803/88

Important notice

The present document can be downloaded from:
<http://www.etsi.org/standards-search>

The present document may be made available in electronic versions and/or in print. The content of any electronic and/or print versions of the present document shall not be modified without the prior written authorization of ETSI. In case of any existing or perceived difference in contents between such versions and/or in print, the only prevailing document is the print of the Portable Document Format (PDF) version kept on a specific network drive within ETSI Secretariat.

Users of the present document should be aware that the document may be subject to revision or change of status. Information on the current status of this and other ETSI documents is available at
<http://portal.etsi.org/tb/status/status.asp>

If you find errors in the present document, please send your comment to one of the following services:
<https://portal.etsi.org/People/CommitteeSupportStaff.aspx>

Copyright Notification

No part may be reproduced or utilized in any form or by any means, electronic or mechanical, including photocopying and microfilm except as authorized by written permission of ETSI.

The content of the PDF version shall not be modified without the written authorization of ETSI.
The copyright and the foregoing restriction extend to reproduction in all media.

© European Telecommunications Standards Institute 2016.
All rights reserved.

DECT™, **PLUGTESTS™**, **UMTS™** and the ETSI logo are Trade Marks of ETSI registered for the benefit of its Members. **3GPP™** and **LTE™** are Trade Marks of ETSI registered for the benefit of its Members and of the 3GPP Organizational Partners.
GSM® and the GSM logo are Trade Marks registered and owned by the GSM Association.

Intellectual Property Rights

IPRs essential or potentially essential to the present document may have been declared to ETSI. The information pertaining to these essential IPRs, if any, is publicly available for **ETSI members and non-members**, and can be found in ETSI SR 000 314: *"Intellectual Property Rights (IPRs); Essential, or potentially Essential, IPRs notified to ETSI in respect of ETSI standards"*, which is available from the ETSI Secretariat. Latest updates are available on the ETSI Web server (<https://ipr.etsi.org>).

Pursuant to the ETSI IPR Policy, no investigation, including IPR searches, has been carried out by ETSI. No guarantee can be given as to the existence of other IPRs not referenced in ETSI SR 000 314 (or the updates on the ETSI Web server) which are, or may be, or may become, essential to the present document.

Foreword

This Technical Specification (TS) has been produced by ETSI 3rd Generation Partnership Project (3GPP).

The present document may refer to technical specifications or reports using their 3GPP identities, UMTS identities or GSM identities. These should be interpreted as being references to the corresponding ETSI deliverables.

The cross reference between GSM, UMTS, 3GPP and ETSI identities can be found under <http://webapp.etsi.org/key/queryform.asp>.

Modal verbs terminology

In the present document "**shall**", "**shall not**", "**should**", "**should not**", "**may**", "**need not**", "**will**", "**will not**", "**can**" and "**cannot**" are to be interpreted as described in clause 3.2 of the [ETSI Drafting Rules](#) (Verbal forms for the expression of provisions).

"**must**" and "**must not**" are **NOT** allowed in ETSI deliverables except when used in direct citation.

Contents

Intellectual Property Rights	2
Foreword.....	2
Modal verbs terminology.....	2
Foreword.....	5
1 Scope	6
2 References	6
3 Definitions, symbols, abbreviations and test tolerances.....	7
3.1 Definitions	7
3.2 Symbols.....	7
3.3 Abbreviations	7
3.4 Test tolerances.....	8
4 General	8
4.1 Introduction	8
4.2 Measurement parameters.....	8
4.2.1 UE based A-GPS measurement parameters.....	8
4.2.2 UE assisted A-GPS measurement parameters.....	8
4.3 Response time	8
4.4 Time assistance	8
4.4.1 Use of fine time assistance.....	9
4.5 RRC states	9
4.6 2D position error	9
5 A-GPS minimum performance requirements.....	9
5.1 Sensitivity.....	9
5.1.1 Coarse time assistance	9
5.1.1.1 Minimum Requirements (Coarse time assistance).....	10
5.1.2 Fine time assistance	10
5.1.2.1 Minimum Requirements (Fine time assistance).....	10
5.2 Nominal Accuracy.....	10
5.2.1 Minimum requirements (nominal accuracy).....	11
5.3 Dynamic Range	11
5.3.1 Minimum requirements (dynamic range)	11
5.4 Multi-Path scenario	11
5.4.1 Minimum Requirements (multi-path scenario).....	12
5.5 Moving scenario and periodic update.....	12
5.5.1 Minimum Requirements (moving scenario and periodic update).....	13
Annex A (normative): Test cases	14
A.1 Conformance tests	14
A.2 Requirement classification for statistical testing.....	14
Annex B (normative): Test conditions.....	15
B.1 General	15
B.1.1 Parameter values	15
B.1.2 Time assistance	15
B.1.3 GPS Reference Time	15
B.1.4 Reference and UE locations	16
B.1.5 Satellite constellation and assistance data	16
B.1.6 Atmospheric delays	16
B.1.7 UTRA Frequency and frequency error.....	16
B.1.8 Information elements.....	16

B.1.9	GPS signals	16
B.1.10	RESET UE POSITIONING STORED INFORMATION Message	16
Annex C (normative): Propagation conditions.....		18
C.1	General	18
C.2	Propagation Conditions	18
C.2.1	Static propagation conditions	18
C.2.2	Multi-path Case G1	18
Annex D (normative): Measurement sequence chart		19
D.1	General	19
D.2	UE Based A-GPS Measurement Sequence Chart	19
D.2.1	UE Based GPS Message Sequence Normal	19
D.2.2	UE Based GPS Message Sequence Normal for moving scenario and periodic update test case.....	21
D.2.3	UE Based GPS Message Sequence Failure	22
D.3	UE Assisted A-GPS Measurement Sequence Chart.....	22
D.3.1	UE Assisted A-GPS Measurement Sequence Chart Normal.....	22
D.3.2	UE assisted A-GPS Measurement Sequence for moving scenario and periodic update test case	24
Annex E (normative): Assistance data required for testing.....		25
E.1	Introduction	25
E.2	Information elements required for UE-based.....	25
E.3	Information elements available for UE-assisted.....	26
Annex F (normative): Converting UE-assisted measurement reports into position estimates.....		29
F.1	Introduction	29
F.2	UE measurement reports	29
F.3	WLS position solution.....	30
Annex G (informative): Change History		32
History		34

Foreword

This Technical Specification has been produced by the 3rd Generation Partnership Project (3GPP).

The contents of the present document are subject to continuing work within the TSG and may change following formal TSG approval. Should the TSG modify the contents of the present document, it will be re-released by the TSG with an identifying change of release date and an increase in version number as follows:

Version x.y.z

where:

- x the first digit:
 - 1 presented to TSG for information;
 - 2 presented to TSG for approval;
 - 3 or greater indicates TSG approved document under change control.
- y the second digit is incremented for all changes of substance, i.e. technical enhancements, corrections, updates, etc.
- z the third digit is incremented when editorial only changes have been incorporated in the document.

1 Scope

The present document establishes the minimum performance requirements for A-GPS for FDD mode of UTRA for the User Equipment (UE).

2 References

The following documents contain provisions which, through reference in this text, constitute provisions of the present document.

- References are either specific (identified by date of publication, edition number, version number, etc.) or non-specific.
- For a specific reference, subsequent revisions do not apply.
- For a non-specific reference, the latest version applies. In the case of a reference to a 3GPP document (including a GSM document), a non-specific reference implicitly refers to the latest version of that document *in the same Release as the present document*.

- [1] 3GPP TS 25.101: "User Equipment (UE) radio transmission and reception (FDD)".
- [2] 3GPP TS 25.104: "Base Station (BS) radio transmission and reception (FDD)".
- [3] 3GPP TS 34.171: "Terminal Conformance Specification, Assisted Global Positioning System (A-GPS) (FDD)".
- [4] 3GPP TS 25.331: "Radio Resource Control (RRC) protocol specification".
- [5] 3GPP TS 25.302: "Services provided by the physical layer".
- [6] 3GPP TS 25.215: "Physical layer; Measurements (FDD)".
- [7] ETSI TR 102 273-1-2: "Electromagnetic compatibility and Radio spectrum Matters (ERM); Improvement on Radiated Methods of Measurement (using test site) and evaluation of the corresponding measurement uncertainties; Part 1: Uncertainties in the measurement of mobile radio equipment characteristics; Sub-part 2: Examples and annexes".
- [8] Navstar GPS Space Segment/Navigation User Interfaces, ICD-GPS 200, Rev. C.
- [9] P. Axelrad, R.G. Brown, "GPS Navigation Algorithms", in Chapter 9 of "Global Positioning System: Theory and Applications", Volume 1, B.W. Parkinson, J.J. Spilker (Ed.), Am. Inst. of Aeronautics and Astronautics Inc., 1996.
- [10] S.K. Gupta, "Test and Evaluation Procedures for the GPS User Equipment", ION-GPS Red Book, Volume 1, p. 119.
- [11] 3GPP TS 34.109: 'Special conformance testing functions'

3 Definitions, symbols, abbreviations and test tolerances

3.1 Definitions

For the purposes of the present document, the terms and definitions given in 3GPP TS 25.101 [1], 3GPP TS 25.104 [2] and the following apply:

Horizontal Dilution Of Precision (HDOP): measure of position determination accuracy that is a function of the geometrical layout of the satellites used for the fix, relative to the receiver antenna

Node B: logical node responsible for radio transmission / reception in one or more cells to/from the User Equipment. Terminates the Iub interface towards the RNC

L1: L band GPS transmission frequency of 1575.42 MHz

3.2 Symbols

Void

3.3 Abbreviations

For the purposes of the present document, the following abbreviations apply:

A-GPS	Assisted - Global Positioning System
AWGN	Additive White Gaussian Noise
C/A	Coarse/Acquisition
CPICH	Common Pilot CHannel
DCH	Dedicated CHannel
DPCH	Dedicated Physical CHannel
DUT	Device Under Test
ECEF	Earth Centred, Earth Fixed
FACH	Fast Access CHannel
FDD	Frequency Division Duplex
GPS	Global Positioning System
GSS	GPS System Simulator
HDOP	Horizontal Dilution Of Precision
LOS	Line Of Sight
PICH	Paging Indicator CHannel
RRC	Radio Resource Control
RSCP	Received Signal Code Power
SFN	System Frame Number
SMLC	Standalone Mobile Location Center
SRNC	Serving Radio Network Controller
SS	FDD System simulator
TDD	Time Division Duplex
TLM	TeLeMetry word. It contains an 8-bits preamble (10001011)
TOW	Time Of Week
TTFB	Time To First Fix
UE	User Equipment
UTRA	Universal Terrestrial Radio Access
UTRAN	Universal Terrestrial Radio Access Network
WLS	Weighted Least Square

3.4 Test tolerances

The requirements given in the present document make no allowance for measurement uncertainty. The test specification 3GPP TS 34.171 [3] defines test tolerances. These test tolerances are individually calculated for each test. The test tolerances are then added to the limits in the present document to create test limits. The measurement results are compared against the test limits as defined by the shared risk principle.

Shared Risk is defined in ETR 273-1-2 [7], subclause 6.5.

4 General

4.1 Introduction

The present document defines the minimum performance requirements for both UE based and UE assisted FDD A-GPS terminals.

4.2 Measurement parameters

4.2.1 UE based A-GPS measurement parameters

In case of UE-based A-GPS, the measurement parameters are contained in the RRC UE POSITIONING POSITION ESTIMATE INFO IE. The measurement parameter in case of UE-based A-GPS is the horizontal position estimate reported by the UE and expressed in latitude/longitude.

4.2.2 UE assisted A-GPS measurement parameters

In case of UE-assisted A-GPS, the measurement parameters are contained in the RRC UE POSITIONING GPS MEASURED RESULTS IE. The measurement parameters in case of UE-assisted A-GPS are the UE GPS Code Phase measurements, as specified in 3GPP TS 25.302 [5] and 3GPP TS 25.215 [6]. The UE GPS Code Phase measurements are converted into a horizontal position estimate using the procedure detailed in Annex F.

4.3 Response time

Max Response Time is defined as the time starting from the moment that the UE has received the final RRC measurement control message containing reporting criteria different from "No Reporting" sent before the UE sends the measurement report containing the position estimate or the GPS measured result, and ending when the UE starts sending the measurement report containing the position estimate or the GPS measured result on the Uu interface. The response times specified for all test cases are Time-to-First-Fix (TTFF) unless otherwise stated, i.e. the UE shall not re-use any information on GPS time, location or other aiding data that was previously acquired or calculated and stored internally in the UE. A dedicated test message 'RESET UE POSITIONING STORED INFORMATION' has been defined in TS 34.109 [11] clause 5.4 for the purpose of deleting this information and is detailed in subclause B.1.10.

4.4 Time assistance

Time assistance is the provision of GPS time to the UE from the network via RRC messages. Currently two different GPS time assistance methods can be provided by the network.

- a) Coarse time assistance is always provided by the network and provides current GPS time to the UE. The time provided is within ± 2 seconds of GPS system time. This allows the GPS time to be known within one GPS navigation data sub-frame. It is signalled to the UE by means of the GPS Week and GPS TOW msec fields in the Reference Time assistance data IE.
- b) Fine time assistance is optionally provided by the network and adds the provision to the UE of the relationship between the GPS system time and the current UTRAN time. The accuracy of this relationship is $\pm 10 \mu\text{s}$ of the actual relationship. This addresses the case when the network can provide an improved GPS time accuracy. It is

signalled to the UE by means of the SFN and UTRAN GPS timing of cell frames fields in the Reference Time assistance data IE.

The time of applicability of time assistance is the beginning of the System Frame of the message containing the GPS Reference time.

4.4.1 Use of fine time assistance

The use of fine time assistance to improve the GPS performance of the UE is optional for the UE, even when fine time assistance is signalled by the network. Thus, there are a set minimum performance requirements defined for all UEs and additional minimum performance requirements that are valid for fine time assistance capable UEs only. These requirements are specified in subclause 5.1.2.

4.5 RRC states

The minimum A-GPS performance requirements are specified in clause 5 for different RRC states that include Cell_DCH and Cell_FACH. Cell_PCH and URA_PCH states are for further study. The test and verification procedures are separately defined in annex B.

4.6 2D position error

The 2D position error is defined by the horizontal difference in meters between the ellipsoid point reported or calculated from the UE Measurement Report and the actual position of the UE in the test case considered.

5 A-GPS minimum performance requirements

The A-GPS minimum performance requirements are defined by assuming that all relevant and valid assistance data is received by the UE in order to perform GPS measurements and/or position calculation. This clause does not include nor consider delays occurring in the various signalling interfaces of the network.

In the following subclauses the minimum performance requirements are based on availability of the assistance data information and messages defined in annexes D and E.

The requirements in CELL_PCH and URA_PCH states are for further study.

5.1 Sensitivity

A sensitivity requirement is essential for verifying the performance of A-GPS receiver in weak satellite signal conditions. In order to test the most stringent signal levels for the satellites the sensitivity test case is performed in AWGN channel. This test case verifies the performance of the first position estimate, when the UE is provided with only coarse time assistance and when it is additionally supplied with fine time assistance.

5.1.1 Coarse time assistance

In this test case 8 satellites are generated for the terminal. AWGN channel model is used.

Table 1: Test parameters

Parameters	Unit	Value
Number of generated satellites	-	8
HDOP Range	-	1.1 to 1.6
Propagation conditions	-	AWGN
GPS Coarse time assistance error range	seconds	±2
GPS Signal for one satellites	dBm	-142
GPS Signal for remaining satellites	dBm	-147

5.1.1.1 Minimum Requirements (Coarse time assistance)

The position estimates shall meet the accuracy and response time specified in table 2.

Table 2: Minimum requirements (coarse time assistance)

Success rate	2-D position error	Max response time
95 %	100 m	20 s

5.1.2 Fine time assistance

This requirement is only valid for fine time assistance capable UEs. In this requirement 8 satellites are generated for the terminal. AWGN channel model is used.

Table 3: Test parameters for fine time assistance capable terminals

Parameters	Unit	Value
Number of generated satellites	-	8
HDOP Range	-	1.1 to 1.6
Propagation conditions	-	AWGN
GPS Coarse time assistance error range	seconds	± 2
GPS Fine time assistance error range	μs	± 10
GPS Signal for all satellites	dBm	-147

5.1.2.1 Minimum Requirements (Fine time assistance)

The position estimates shall meet the accuracy and response time requirements in table 4.

Table 4: Minimum requirements for fine time assistance capable terminals

Success rate	2-D position error	Max response time
95 %	100 m	20 s

5.2 Nominal Accuracy

Nominal accuracy requirement verifies the accuracy of A-GPS position estimate in ideal conditions. The primary aim of the test is to ensure good accuracy for a position estimate when satellite signal conditions allow it. This test case verifies the performance of the first position estimate.

In this requirement 8 satellites are generated for the terminal. AWGN channel model is used.

Table 5: Test parameters

Parameters	Unit	Value
Number of generated satellites	-	8
HDOP Range	-	1.1 to 1.6
Propagation conditions	-	AWGN
GPS Coarse time assistance error range	seconds	± 2
GPS Signal for all satellites	dBm	-130

5.2.1 Minimum requirements (nominal accuracy)

The position estimates shall meet the accuracy and response time requirements in table 6.

Table 6: Minimum requirements

Success rate	2-D position error	Max response time
95 %	30 m	20 s

5.3 Dynamic Range

The aim of a dynamic range requirement is to ensure that a GPS receiver performs well when visible satellites have rather different signal levels. Strong satellites are likely to degrade the acquisition of weaker satellites due to their cross-correlation products. Hence, it is important in this test case to keep use AWGN in order to avoid loosening the requirements due to additional margin because of fading channels. This test case verifies the performance of the first position estimate.

In this requirement 6 satellites are generated for the terminal. AWGN channel model is used.

Table 7: Test parameters

Parameters	Unit	Value
Number of generated satellites	-	6
HDOP Range	-	1.4 to 2.1
GPS Coarse time assistance error range	seconds	± 2
Propagation conditions	-	AWGN
GPS Signal for 1 st satellite	dBm	-129
GPS Signal for 2 nd satellite	dBm	-135
GPS Signal for 3 rd satellite	dBm	-141
GPS Signal for 4 th satellite	dBm	-147
GPS Signal for 5 th satellite	dBm	-147
GPS Signal for 6 th satellite	dBm	-147

5.3.1 Minimum requirements (dynamic range)

The position estimates shall meet the accuracy and response time requirements in table 8.

Table 8: Minimum requirements

Success rate	2-D position error	Max response time
95 %	100 m	20 s

5.4 Multi-Path scenario

The purpose of the test case is to verify the receiver's tolerance to multipath while keeping the test setup simple. This test case verifies the performance of the first position estimate.

In this requirement 5 satellites are generated for the terminal. Two of the satellites have one tap channel representing Line-Of-Sight (LOS) signal. The three other satellites have two-tap channel, where the first tap represents LOS signal and the second reflected and attenuated signal as specified in Case G1 in subclause C.2.2.

Table 9: Test parameters

Parameters	Unit	Value
Number of generated satellites (Satellites 1, 2 unaffected by multi-path) (Satellites 3, 4, 5 affected by multi-path)	-	5
GPS Coarse time assistance error range	seconds	± 2
HDOP Range	-	1.8 to 2.5
Satellite 1, 2 signal	dBm	-130
Satellite 3, 4, 5 signal	dBm	LOS signal of -130 dBm, multi-path signal of -136 dBm

5.4.1 Minimum Requirements (multi-path scenario)

The position estimates shall meet the accuracy and response time requirements in table 10.

Table 10: Minimum requirements

Success rate	2-D position error	Max response time
95 %	100 m	20 s

5.5 Moving scenario and periodic update

The purpose of the test case is to verify the receiver's capability to produce GPS measurements or location fixes on a regular basis, and to follow when it is located in a vehicle that slows down, turns or accelerates. A good tracking performance is essential for a certain location services. A moving scenario with periodic update is well suited for verifying the tracking capabilities of an A-GPS receiver in changing UE speed and direction. In the requirement the UE moves on a rectangular trajectory, which imitates urban streets. AWGN channel model is used. This test is not performed as a Time to First Fix (TTFF) test.

In this requirement 5 satellites are generated for the terminal. The UE is requested to use periodical reporting with a reporting interval of 2 seconds.

The UE moves on a rectangular trajectory of 940 m by 1 440 m with rounded corner defined in figure 1. The initial reference is first defined followed by acceleration to final speed of 100 km/h in 250 m. The UE then maintains the speed for 400 m. This is followed by deceleration to final speed of 25 km/h in 250 m. The UE then turn 90 degrees with turning radius of 20 m at 25 km/h. This is followed by acceleration to final speed of 100 km/h in 250 m. The sequence is repeated to complete the rectangle.

Table 11: Trajectory Parameters

Parameter	Distance (m)	Speed (km/h)
$l_{11}, l_{15}, l_{21}, l_{25}$	20	25
$l_{12}, l_{14}, l_{22}, l_{24}$	250	25 to 100 and 100 to 25
l_{13}	400	100
l_{23}	900	100

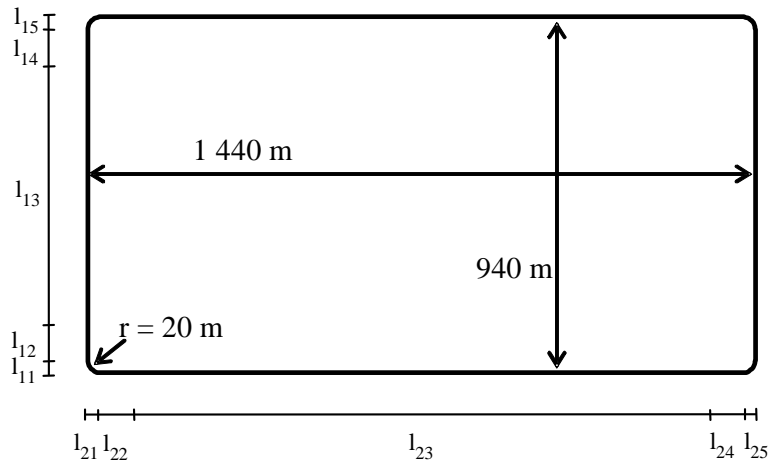


Figure 1: Rectangular trajectory of the moving scenario and periodic update test case

Table 12: Test Parameters

Parameters	Unit	Value
Number of generated satellites	-	5
HDOP Range	-	1.8 to 2.5
Propagation condition	-	AWGN
GPS signal for all satellites	dBm	-130

5.5.1 Minimum Requirements (moving scenario and periodic update)

The position estimates shall meet the accuracy requirement of table 13 with the periodical reporting interval defined in table 13 after the first reported position estimates.

NOTE: In the actual testing the UE may report error messages until it has been able to acquire GPS measured results or a position estimate. The test equipment shall only consider the first measurement report different from an error message as the first position estimate in the requirement in table 13.

Table 13: Minimum requirements

Success Rate	2-D position error	Periodical reporting interval
95 %	100 m	2 s

Annex A (normative): Test cases

A.1 Conformance tests

The conformance tests are specified in 3GPP TS 34.171 [3]. Statistical interpretation of the requirements is described in clause A.2.

A.2 Requirement classification for statistical testing

Requirements in the present document are either expressed as absolute requirements with a single value stating the requirement, or expressed as a success rate. There are no provisions for the statistical variations that will occur when the parameter is tested.

Annex B lists the test parameters needed for the tests. The test will result in an outcome of a test variable value for the DUT inside or outside the test limit. Overall, the probability of a "good" DUT being inside the test limit(s) and the probability of a "bad" DUT being outside the test limit(s) should be as high as possible. For this reason, when selecting the test variable and the test limit(s), the statistical nature of the test is accounted for.

When testing a parameter with a statistical nature, a confidence level has to be set. The confidence level establishes the probability that a DUT passing the test actually meets the requirement and determines how many times a test has to be repeated. The confidence levels are defined for the final tests in 3GPP TS 34.171 [3].

Annex B (normative): Test conditions

B.1 General

This annex specifies the additional parameters that are needed for the test cases specified in clause 5 and applies to all tests unless otherwise stated.

B.1.1 Parameter values

Additionally, amongst all the listed parameters (see annex E), the following values for some important parameters are to be used in the measurement control message.

Table B.1: Parameter values

Information element	Value - TTFF tests (except nominal accuracy test)	Value - TTFF tests (nominal accuracy test)	Value - Periodic tests
Measurement Reporting Mode	Periodical reporting	Periodical reporting	Periodical reporting
Amount of reporting	1	1	Infinite (see note)
Reporting interval	20 000 ms	20 000 ms	2 000 ms
Horizontal accuracy	50 m	15 m	50 m
Vertical accuracy	100 m	100 m	100 m
NOTE: Infinite means during the complete test time.			

In the Sensitivity test case with Fine Time Assistance, the following parameter values are used.

Table B.2: Parameters for Fine Time Assistance test

Information element	Value
TUTRAN-GPS drift rate	0
SFN-TOW Uncertainty	lessThan10

B.1.2 Time assistance

For every Test Instance in each TTFF test case, the IE GPS TOW msec shall have a random offset, relative to GPS system time, within the error range of Coarse Time Assistance defined in the test case. This offset value shall have a uniform random distribution.

In addition, for every Fine Time Assistance Test Instance the IE UTRAN GPS timing of cell frames shall have a random offset, relative to the true value of the relationship between the two time references, within the error range of Fine Time Assistance defined in the test case. This offset value shall have a uniform random distribution.

For the Moving Scenario and Periodic Update Test Case the IE GPS TOW msec shall be set to the nominal value.

B.1.3 GPS Reference Time

For every Test Instance in each TTFF test case, the GPS reference time shall be advanced so that, at the time the fix is made, it is at least 2 minutes later than the previous fix.

B.1.4 Reference and UE locations

There is no limitation on the selection of the reference location, consistent with achieving the required HDOP for the Test Case. For each test instance the reference location shall change sufficiently such that the UE shall have to use the new assistance data. The uncertainty of the semi-major axis is 3 km. The uncertainty of the semi-minor axis is 3 km. The orientation of major axis is 0 degrees. The uncertainty of the altitude information is 500 m. The confidence factor is 68 %.

For every Test Instance in each TTFF test case, the UE location shall be randomly selected to be within 3 km of the Reference Location. The Altitude of the UE shall be randomly selected between 0 m to 500 m above WGS-84 reference ellipsoid. These values shall have uniform random distributions.

B.1.5 Satellite constellation and assistance data

The satellite constellation shall consist of 24 satellites. Almanac assistance data shall be available for all these 24 satellites. At least 9 of the satellites shall be visible to the UE (that is above 5 degrees elevation with respect to the UE). Other assistance data shall be available for 9 of these visible satellites. In each test, signals are generated for only a sub-set of these satellites for which other assistance data is available. The number of satellites in this sub-set is specified in the test. The satellites in this sub-set shall all be above 15 degrees elevation with respect to the UE. The HDOP for the test shall be calculated using this sub-set of satellites. The selection of satellites for this sub-set shall be random and consistent with achieving the required HDOP for the test.

B.1.6 Atmospheric delays

Typical Ionospheric and Tropospheric delays shall be simulated and the corresponding values inserted into the Ionospheric Model IEs.

B.1.7 UTRA Frequency and frequency error

In all test cases the UTRA frequency used shall be the mid range for the UTRA operating band. The UTRA frequency with respect to the GPS carrier frequency shall be offset by +0.025 PPM.

B.1.8 Information elements

The information elements that are available to the UE in all the test cases are listed in annex E.

B.1.9 GPS signals

The GPS signal is defined at the A-GPS antenna connector of the UE. For UE with integral antenna only, a reference antenna with a gain of 0 dBi is assumed.

B.1.10 RESET UE POSITIONING STORED INFORMATION Message

In order to ensure each Test Instance in each TTFF test is performed under Time to First Fix (TTFF) conditions, a dedicated test signal (*RESET UE POSITIONING STORED INFORMATION*) defined in TS 34.109 [11] clause 5.4 shall be used.

When the UE receives the '*RESET UE POSITIONING STORED INFORMATION*' signal, with the IE *UE POSITIONING TECHNOLOGY* set to *AGPS* it shall:

- discard any internally stored GPS reference time, reference location, and any other aiding data obtained or derived during the previous test instance (e.g. expected ranges and Doppler);
- accept or request a new set of reference time or reference location or other required information, as in a TTFF condition;

- calculate the position or perform GPS measurements using the 'new' reference time or reference location or other information.

Annex C (normative): Propagation conditions

C.1 General

Void

C.2 Propagation Conditions

C.2.1 Static propagation conditions

The propagation for the static performance measurement is an Additive White Gaussian Noise (AWGN) environment. No fading and multi-paths exist for this propagation model.

C.2.2 Multi-path Case G1

Doppler frequency difference between direct and reflected signal paths is applied to the carrier and code frequencies. The Carrier and Code Doppler frequencies of LOS and multi-path for GPS L1 signal are defined in table C.1.

Table C.1: Case G1

Initial relative Delay [GPS chip]	Carrier Doppler frequency of tap [Hz]	Code Doppler frequency of tap [Hz]	Relative mean Power [dB]
0	F_d	F_d / N	0
0.5	$F_d - 0.1$	$(F_d - 0.1) / N$	-6

NOTE: Discrete Doppler frequency is used for each tap.

$N = f_{\text{GPSL1}} / f_{\text{chip}}$, where f_{GPSL1} is the nominal carrier frequency of the GPS L1 signal (1575.42 MHz) and f_{chip} is the GPS L1 C/A code chip rate (1.023 Mcps/s).

The initial carrier phase difference between taps shall be randomly selected between $[0, 2\pi]$. The initial value shall have uniform random distribution.

Annex D (normative): Measurement sequence chart

D.1 General

The measurement Sequence Charts that are required in all the proposed test cases, are defined in this clause.

D.2 UE Based A-GPS Measurement Sequence Chart

D.2.1 UE Based GPS Message Sequence Normal

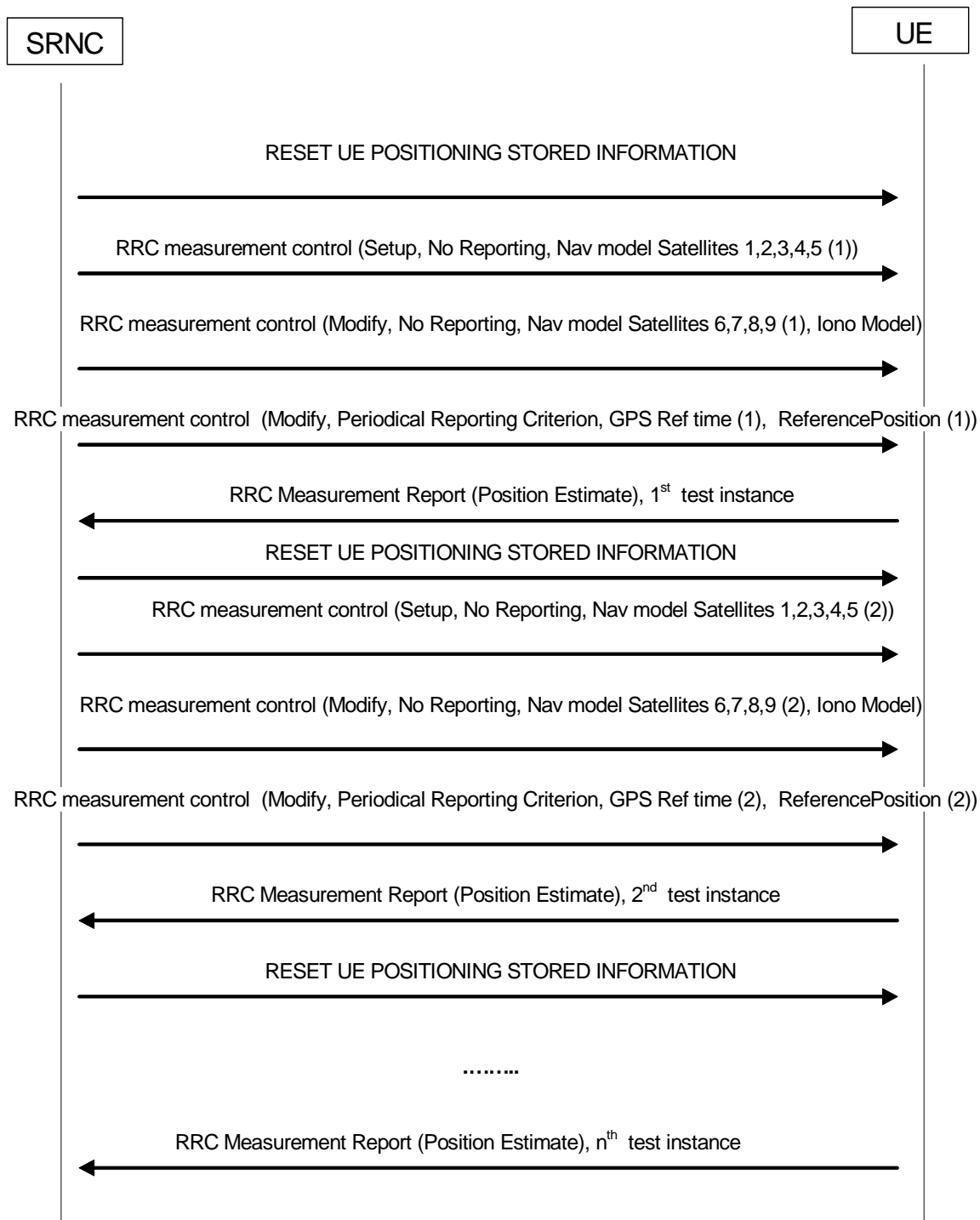


Figure D.1: UE-Based GPS Message Sequence Normal

D.2.2 UE Based GPS Message Sequence Normal for moving scenario and periodic update test case

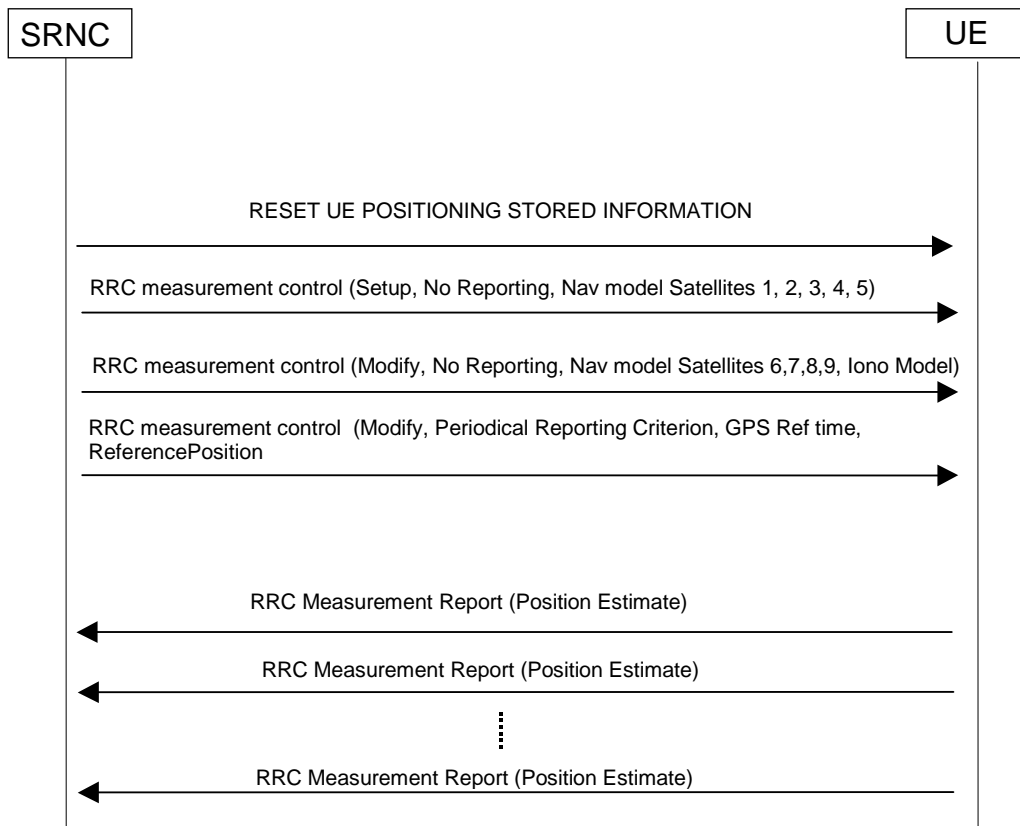


Figure D.2: UE-Based GPS Message Sequence Normal for moving scenario test case

NOTE: In the actual testing the UE may report error messages until it has been able to acquire a position estimate.

D.2.3 UE Based GPS Message Sequence Failure

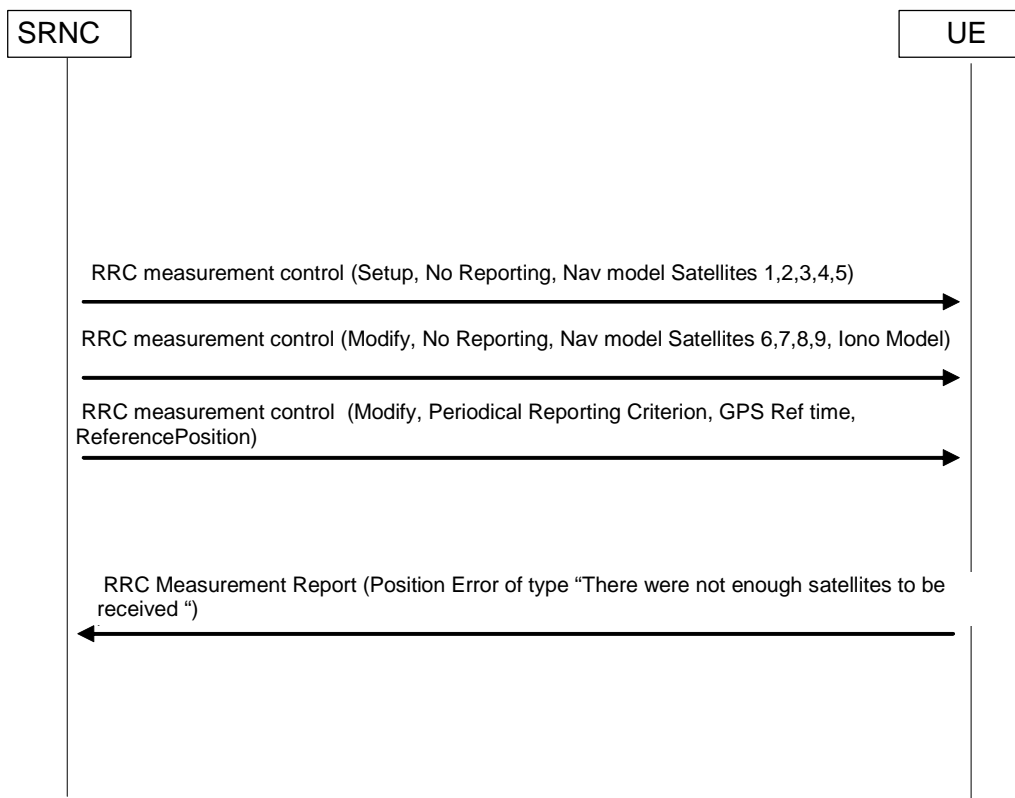


Figure D.3: UE-Based GPS Message Sequence Failure

D.3 UE Assisted A-GPS Measurement Sequence Chart

D.3.1 UE Assisted A-GPS Measurement Sequence Chart Normal

The assistance data requested by the UE and provided by the SRNC in this sequence of messages shall be selected from among those information elements described as available in clause E.3.

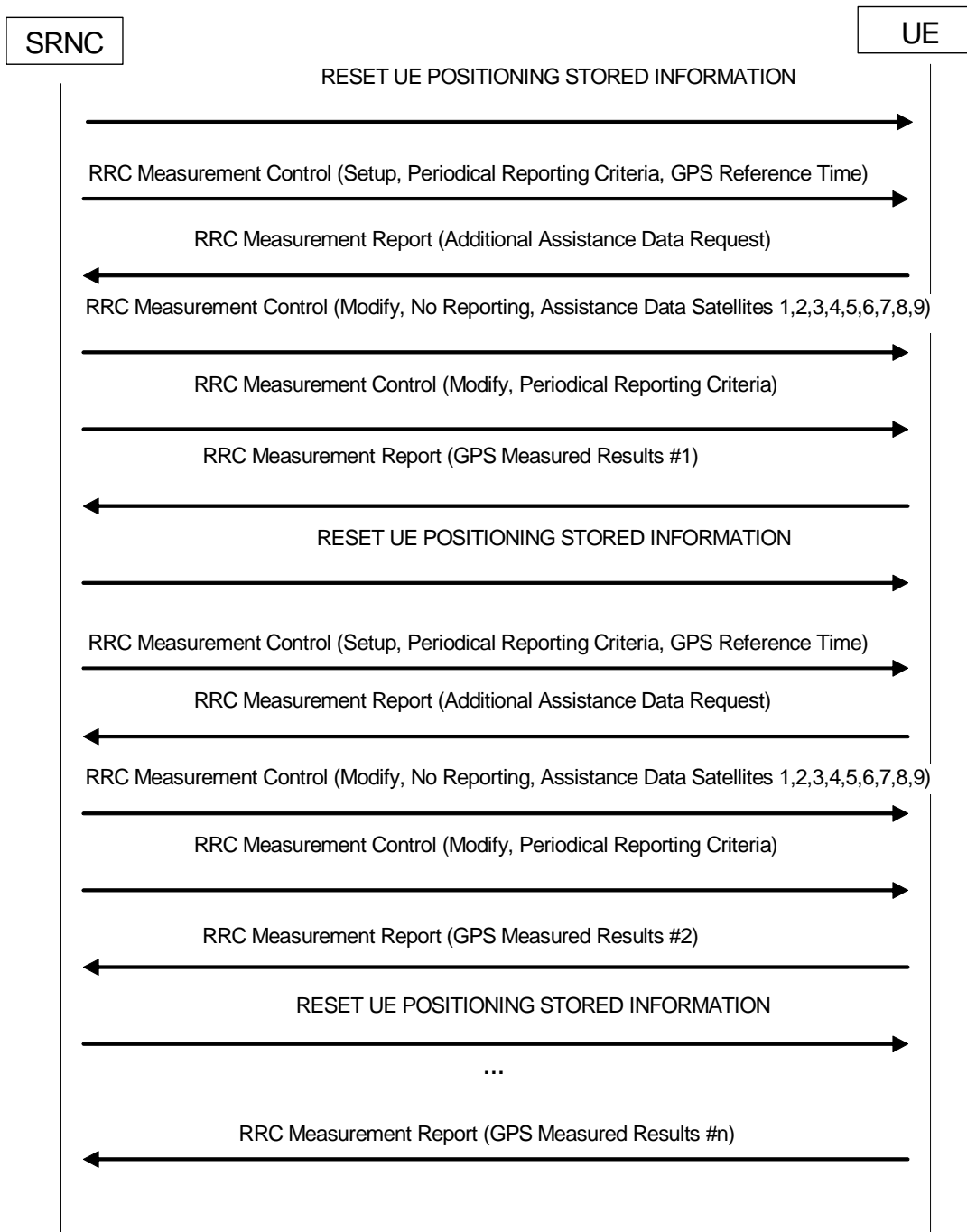


Figure D.4: UE-Assisted GPS Message Sequence

D.3.2 UE assisted A-GPS Measurement Sequence for moving scenario and periodic update test case

The assistance data requested by the UE and provided by the SRNC in this sequence of messages shall be selected from among those information elements described as available in clause E.3.

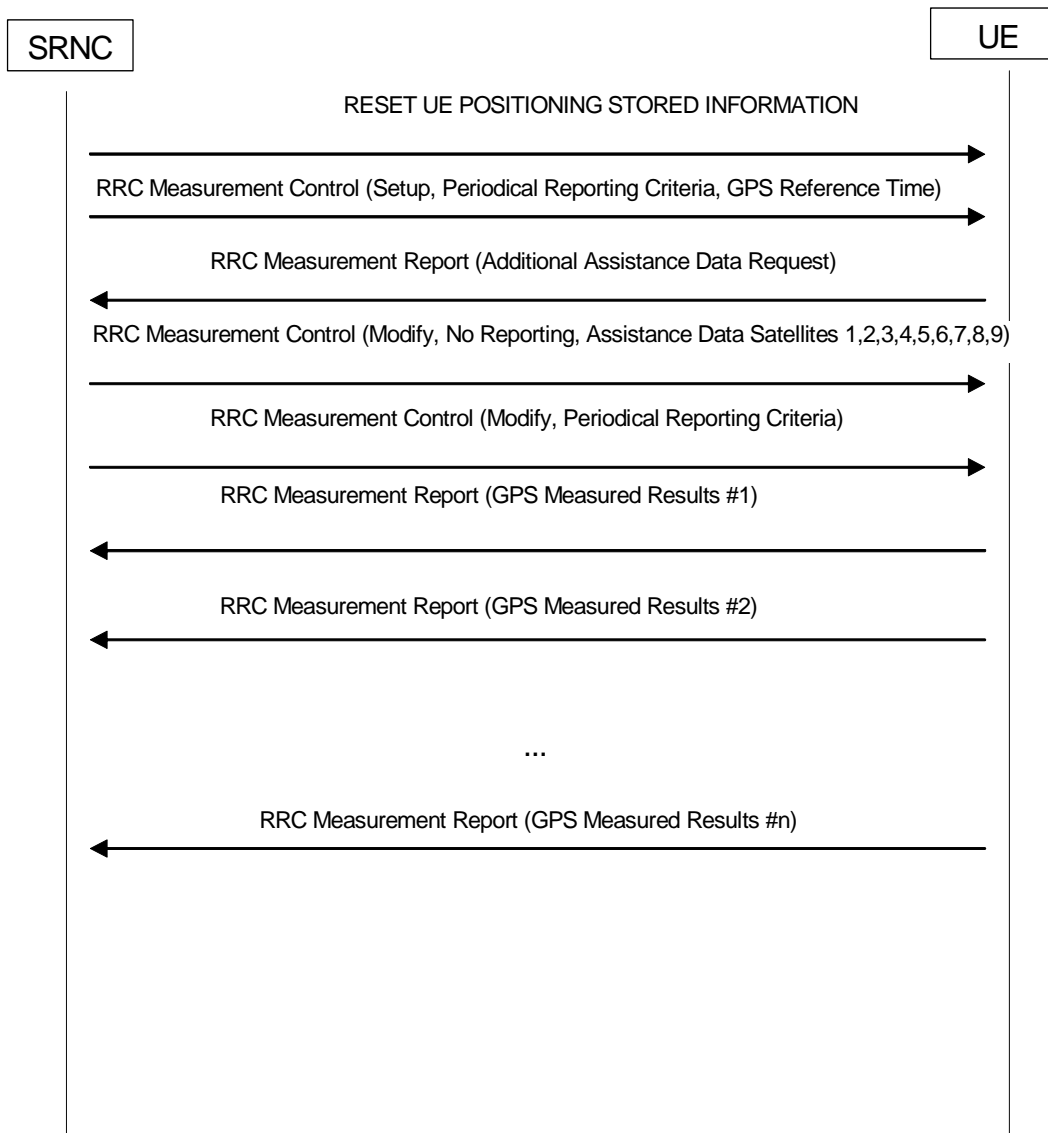


Figure D.5: UE assisted GPS Message Sequence for moving scenario and periodic update

NOTE: In the actual testing the UE may report error messages until it has been able to acquire GPS measured results.

Annex E (normative): Assistance data required for testing

E.1 Introduction

This annex defines the assistance data IEs available in all test cases. The assistance data shall be given for satellites as defined in B.1.5.

The information elements are given with reference to 3GPP TS 25.331 [4], where the details are defined.

Clause E.2 lists the assistance data IEs required for testing of UE-based mode, and clause E.3 lists the assistance data available for testing of UE-assisted mode.

E.2 Information elements required for UE-based

The following GPS assistance data IEs shall be present for each test:

- a) **UE positioning GPS reference time IE.** This information element is defined in subclause 10.3.7.96 of 3GPP TS 25.331 [4].

Table E.1: UE positioning GPS reference time IE

Name of the IE	Fields of the IE	UE Based Coarse time	UE Based Fine Time
UE positioning GPS reference time subclause 10.3.7.96 of 3GPP TS 25.331 [4]			
	GPS Week	Yes	Yes
	GPS TOW msec	Yes	Yes
	UTRAN GPS reference time		Yes
	>UTRAN GPS timing of cell frames		Yes
	>CHOICE mode		Yes
	>>FDD		Yes
	>>>Primary CPICH Info		Yes
	>>TDD		
	>>>cell parameters id		
	>SFN		Yes
	SFN-TOW Uncertainty		Yes
	TUTRAN-GPS drift rate		Yes
	GPS TOW Assist	Yes	Yes
	SatID	Yes	Yes
	TLM Message	Yes	Yes
	TLM Reserved	Yes	Yes
	Alert	Yes	Yes
	Anti-Spoof	Yes	Yes

- b) **UE positioning GPS reference UE position IE.** This information element is defined in subclause 10.3.8.4c of 3GPP TS 25.331 [4].

Table E.2: UE positioning GPS reference UE position IE

Name of the IE	Fields of the IE	UE Based Coarse time	UE Based Fine Time
Reference Location subclause 10.3.8.4c of 3GPP TS 25.331 [4]	Ellipsoid point with Altitude and uncertainty ellipsoid	Yes	Yes

- c) **UE positioning GPS navigation model IE.** This information element is defined in subclause 10.3.7.94 of 3GPP TS 25.331 [4]. The Navigation model will be chosen for the reference time and reference position.

Table E.3: UE positioning GPS navigation model IE

Name of the IE	Fields of the IE	UE Based Coarse time	UE Based Fine Time
Navigation Model subclause 10.3.7.94 of 3GPP TS 25.331 [4]		Yes	Yes

- d) **UE positioning GPS ionospheric model IE.** This information element is defined in subclause 10.3.7.92 of 3GPP TS 25.331 [4].

Table E.4: UE positioning GPS ionospheric model IE

Name of the IE	Fields of the IE	UE Based Coarse time	UE Based Fine Time
Ionospheric Model subclause 10.3.7.92 of 3GPP TS 25.331 [4]		Yes	Yes

E.3 Information elements available for UE-assisted

The following GPS assistance data IEs shall be available for each test:

- a) **UE positioning GPS reference time IE.** This information element is defined in subclause 10.3.7.96 of 3GPP TS 25.331 [4].

Table E.5: UE positioning GPS reference time IE

Name of the IE	Fields of the IE	UE Assisted Coarse time	UE Assisted Fine Time
UE positioning GPS reference time subclause 10.3.7.96 of 3GPP TS 25.331 [4]			
	GPS Week	Yes	Yes
	GPS TOW msec	Yes	Yes
	UTRAN GPS reference time		Yes
	>UTRAN GPS timing of cell frames		Yes
	>CHOICE mode		Yes
	>>FDD		Yes
	>>>Primary CPICH Info		Yes
	>>TDD		
	>>>cell parameters id		
	>SFN		Yes
	SFN-TOW Uncertainty		Yes
	TUTRAN-GPS drift rate		Yes
	GPS TOW Assist	Yes	Yes
	SatID	Yes	Yes
	TLM Message	Yes	Yes
	TLM Reserved	Yes	Yes
	Alert	Yes	Yes
	Anti-Spoof	Yes	Yes

- b) **UE positioning GPS reference UE position IE.** This information element is defined in subclause 10.3.8.4c of 3GPP TS 25.331 [4].

Table E.6: UE positioning GPS reference UE position IE

Name of the IE	Fields of the IE	UE Assisted Coarse Time	UE Assisted Fine Time
Reference Location subclause 10.3.8.4c of 3GPP TS 25.331 [4]	Ellipsoid point with Altitude and uncertainty ellipsoid	Yes	Yes

- c) **UE positioning GPS almanac** This information element is defined in subclause 10.3.7.89 of 3GPP TS 25.331 [4]. The Almanac shall be chosen for the reference time.

Table E.7: UE positioning GPS almanac IE

Name of the IE	Fields of the IE	UE Assisted Coarse Time	UE Assisted Fine Time
UE positioning GPS almanac subclause 10.3.7.89 of 3GPP TS 25.331 [4]			
	Almanac Reference Week	Yes	Yes
	Satellite information	Yes	Yes

- d) **UE positioning GPS navigation model IE.** This information element is defined in subclause 10.3.7.94 of 3GPP TS 25.331 [4]. The Navigation model will be chosen for the reference time and reference position.

Table E.8: UE positioning GPS navigation model IE

Name of the IE	Fields of the IE	UE Assisted Coarse Time	UE Assisted Fine Time
Navigation Model subclause 10.3.7.94 of 3GPP TS 25.331 [4]		Yes	Yes

- e) **UE positioning GPS acquisition assistance IE.** This information element is defined in subclause 10.3.7.88 of 3GPP TS 25.331 [4].

Table E.9: UE positioning GPS acquisition assistance IE

Name of the IE	Fields of the IE	UE Assisted Coarse time	UE Assisted Fine Time
Acquisition Assistance subclause 10.3.7.88 of 3GPP TS 25.331 [4]			
-	GPS TOW msec	Yes	Yes
-	UTRAN GPS reference time		Yes
-	>UTRAN GPS timing of cell frames		Yes
-	>CHOICE <i>mode</i>		Yes
-	>>FDD		Yes
-	>>>Primary CPICH Info		Yes
-	>SFN		Yes
-	Satellite information	Yes	Yes
-	>SatID	Yes	Yes
	>Doppler (0 th order term)	Yes	Yes
	>Extra Doppler	Yes	Yes
	>>Doppler (1 st order term)	Yes	Yes
	>>Doppler Uncertainty	Yes	Yes
	>Code Phase	Yes	Yes
	>Integer Code Phase	Yes	Yes
	>GPS Bit number	Yes	Yes
	>Code Phase Search Window	Yes	Yes
	>Azimuth and Elevation	Yes	Yes
	>> Azimuth	Yes	Yes
	>> Elevation	Yes	Yes

Annex F (normative): Converting UE-assisted measurement reports into position estimates

F.1 Introduction

To convert the UE measurement reports in case of UE-assisted mode of A-GPS into position errors, a transformation between the "measurement domain" (code-phases, etc.) into the "state" domain (position estimate) is necessary. Such a transformation procedure is outlined in the following clauses. The details can be found in [8], [9] and [10].

F.2 UE measurement reports

In case of UE-assisted A-GPS, the measurement parameters are contained in the RRC UE POSITIONING GPS MEASURED RESULTS IE (subclause 10.3.7.93 in 3GPP TS 25.331 [4]). The measurement parameters required for calculating the UE position are:

- 1) Reference Time: The UE has two choices for the Reference Time:
 - a) "UE GPS timing of cell frames";
 - b) "GPS TOW msec".
- 2) Measurement Parameters: 1 to <maxSat>:
 - a) "Satellite ID (SV PRN)";
 - b) "Whole GPS chips";
 - c) "Fractional GPS Chips";
 - d) "Pseudorange RMS Error".

Additional information required at the system simulator:

- 1) "UE positioning GPS reference UE position" (subclause 10.3.8.4c in 3GPP TS 25.331 [4]):
Used for initial approximate receiver coordinates.
- 2) "UE positioning GPS navigation model" (subclause 10.3.7.94 in 3GPP TS 25.331 [4]):
Contains the GPS ephemeris and clock correction parameters as specified in [8]; used for calculating the satellite positions and clock corrections.
- 3) "UE positioning GPS ionospheric model" (subclause 10.3.7.92 in 3GPP TS 25.331 [4]):
Contains the ionospheric parameters which allow the single frequency user to utilize the ionospheric model as specified in [8] for computation of the ionospheric delay.

F.3 WLS position solution

The WLS position solution problem is concerned with the task of solving for four unknowns; x_u , y_u , z_u the receiver coordinates in a suitable frame of reference (usually ECEF) and b_u the receiver clock bias. It typically requires the following steps:

Step 1: Formation of pseudo-ranges

The observation of code phase reported by the UE for each satellite SV_i is related to the pseudo-range/c modulo 1 ms (the length of the C/A code period). For the formation of pseudo-ranges, the integer number of milliseconds to be added to each code-phase measurement has to be determined first. Since 1 ms corresponds to a travelled distance of 300 km, the number of integer ms can be found with the help of reference location and satellite ephemeris. The distance between the reference location and each satellite SV_i is calculated and the integer number of milli-seconds to be added to the UE code phase measurements is obtained.

Step 2: Formation of weighting matrix

The UE reported "Pseudorange RMS Error" values are used to calculate the weighting matrix for the WLS algorithm [9]. According to 3GPP TS 25.331 [4], the encoding for this field is a 6 bit value that consists of a 3 bit mantissa, X_i and a 3 bit exponent, Y_i for each SV_i :

$$w_i = RMSError = 0.5 \times \left(1 + \frac{X_i}{8} \right) \times 2^{Y_i}$$

The weighting Matrix \mathbf{W} is defined as a diagonal matrix containing the estimated variances calculated from the "Pseudorange RMS Error" values:

$$\mathbf{W} = \text{diag}\{1/w_1^2, 1/w_2^2, \dots, 1/w_n^2\}$$

Step 3: WLS position solution

The WLS position solution is described in reference [9] and usually requires the following steps:

- 1) Computation of satellite locations at time of transmission using the ephemeris parameters and user algorithms defined in [8] section 20.3.3.4.3.
- 2) Computation of clock correction parameters using the parameters and algorithms as defined in [8] section 20.3.3.3.3.1.
- 3) Computation of atmospheric delay corrections using the parameters and algorithms defined in [8] section 20.3.3.5.2.5 for the ionospheric delay, and using the Gupta model in reference [10] p. 121 equation (2) for the tropospheric delay.
- 4) The WLS position solution starts with an initial estimate of the user state (position and clock offset). The Reference Location is used as initial position estimate. The following steps are required:
 - a) Calculate geometric range (corrected for Earth rotation) between initial location estimate and each satellite included in the UE measurement report.
 - b) Predict pseudo-ranges for each measurement including clock and atmospheric biases as calculated in 1) to 3) above and defined in [8,9].
 - c) Calculate difference between predicted and measured pseudo-ranges Δp
 - d) Calculate the "Geometry Matrix" \mathbf{G} as defined in [9]:

$$\mathbf{G} \equiv \begin{bmatrix} -\hat{\mathbf{1}}_1^T & 1 \\ -\hat{\mathbf{1}}_2^T & 1 \\ \vdots & \vdots \\ -\hat{\mathbf{1}}_n^T & 1 \end{bmatrix} \text{ with } \hat{\mathbf{1}}_i \equiv \frac{\mathbf{r}_{si} - \hat{\mathbf{r}}_u}{|\mathbf{r}_{si} - \hat{\mathbf{r}}_u|} \text{ where } \mathbf{r}_{si} \text{ is the Satellite position vector for SV}_i \text{ (calculated in 1)}$$

above), and $\hat{\mathbf{r}}_u$ is the estimate of the user location.

- e) Calculate the WLS solution according to [9]:

$$\Delta \hat{\mathbf{x}} = (\mathbf{G}^T \mathbf{W} \mathbf{G})^{-1} \mathbf{G}^T \mathbf{W} \Delta \rho$$

- f) Adding the $\Delta \hat{\mathbf{x}}$ to the initial state estimate gives an improved estimate of the state vector:

$$\hat{\mathbf{x}} \rightarrow \hat{\mathbf{x}} + \Delta \hat{\mathbf{x}} .$$

- 5) This new state vector $\hat{\mathbf{x}}$ can be used as new initial estimate and the procedure is repeated until the change in $\hat{\mathbf{x}}$ is sufficiently small.

Step 4: Transformation from Cartesian coordinate system to Geodetic coordinate system

The state vector $\hat{\mathbf{x}}$ calculated in Step 3 contains the UE position in ECEF Cartesian coordinates together with the UE receiver clock bias. Only the user position is of further interest. It is usually desirable to convert from ECEF coordinates x_u, y_u, z_u to geodetic latitude φ , longitude λ and altitude h on the WGS84 reference ellipsoid.

Step 5: Calculation of "2-D Position Errors"

The latitude φ / longitude λ obtained after Step 4 is used to calculate the 2-D position error.

Annex G (informative): Change History

Table G.1: TS history before approval

Date	Meeting	Document	Comment	Version old	Version New
	RAN WG4 #29	R4-031082	Document proposed at RAN#29		
	RAN WG4 #29	R4-031156	Comments added inline with discussion at RAN#29		
Dec 2003			Comment on R4-031156		
Jan 2004	RAN WG4 #30	R4-040104	Comments added after Ad-hoc 29/1/04		
Jan 2004	RAN WG4 #29	R4-040169	Revised version of R4-040104 to allow printing		
May 2004	RAN WG4 #31	R4-040362	Revised version of R4-040233		
May 2004	RAN WG4 #31	R4-040387	Approved version at RAN#31		
May 2004	RAN WG4 #31		V0.0.0 produced based on R4-040387		0.0.0
May 2004			V0.1.0 with input from R4-040364	0.0.0	0.1.0
Aug 2004	Conference call on Aug 5, 2004		V0.1.0 with approved CRs: R4-04043, R4-04048, R4AH-04049, R4AH-04050 and R4AH-04052	0.1.0	0.2.0
Aug 2004	RAN WG4 #32	R4-040465	V0.2.0 for approval at RAN WG4 #32		
Aug 2004	RAN WG4 #32	R4-040564	V0.3.0 for approval at RAN WG4 #32, inclusion of changes in R4-040535	0.2.0	0.3.0
Sep 2004	RAN #25	RP-040341	Submit for approval	0.3.0	1.0.0
Sep 2004	RAN #25		Approved at RAN#24	1.0.0	6.0.0

Table G.2: Release 6 CR approved at TSG RAN #26

RAN Tdoc	Spec	CR	R	Ph	Title	Cat	Curr	New	Work Item
RP-040413	25.171	001	2	Rel-6	Removal of inconsistencies in TS 25.171	F	6.0.0	6.1.0	LCS-UEPos-AGPSPerf

Table G.3: Release 6 CR approved at TSG RAN #29

RAN Tdoc	Spec	CR	R	Ph	Title	Cat	Curr	New	Work Item
RP-050499	25.171	0003	1	Rel-6	Changes to GPS scenarios	F	6.1.0	6.2.0	LCS-UEPos-AGPSPerf

Table G.4: Creation of Release 7

RAN Tdoc	Spec	CR	R	Ph	Title	Cat	Curr	New	Work Item
	25.171			Rel-7	Release 7 created following decision at RAN#31		6.1.0	7.0.0	

Table G.4: Release 7 CRs approved at TSG RAN #32

RAN Tdoc	Spec	CR	R	Ph	Title	Cat	Curr	New	Work Item
RP-060305	25.171	0005		Rel-7	Horizontal Accuracy IE change for nominal accuracy requirement	A	7.0.0	7.1.0	TEI6
RP-060305	25.171	0007		Rel-7	Change to altitude of simulated UE position	A	7.0.0	7.1.0	TEI6

Table G.5: Release 8

RAN Meeting	RAN Tdoc	CR	R	Title	Cat	Curr	New	Work Item
SP-42				Upgrade unchanged from Rel 7			8.0.0	
SP-46				Upgrade unchanged from Rel 8			9.0.0	
SP-51				Upgraded unchanged from Rel-9		9.0.0	10.0.0	
SP-57	-	-	-	Update to Rel-11 version (MCC)	-	10.0.0	11.0.0	-
SP-65	-	-	-	Update to Rel-12 version (MCC)	-	11.0.0	12.0.0	
SP-70	-	-	-	Update to Rel-13 version (MCC)	-	12.0.0	13.0.0	

History

Document history		
V13.0.0	January 2016	Publication