

ETSI TS 124 030 V17.0.0 (2022-04)



**Digital cellular telecommunications system (Phase 2+) (GSM);
Universal Mobile Telecommunications System (UMTS);
LTE;
Location Services (LCS);
Supplementary service operations;
Stage 3
(3GPP TS 24.030 version 17.0.0 Release 17)**



Reference

RTS/TSGC-0424030vh00

Keywords

GSM,LTE,UMTS

ETSI

650 Route des Lucioles
F-06921 Sophia Antipolis Cedex - FRANCE

Tel.: +33 4 92 94 42 00 Fax: +33 4 93 65 47 16

Siret N° 348 623 562 00017 - APE 7112B
Association à but non lucratif enregistrée à la
Sous-Préfecture de Grasse (06) N° w061004871

Important notice

The present document can be downloaded from:

<http://www.etsi.org/standards-search>

The present document may be made available in electronic versions and/or in print. The content of any electronic and/or print versions of the present document shall not be modified without the prior written authorization of ETSI. In case of any existing or perceived difference in contents between such versions and/or in print, the prevailing version of an ETSI deliverable is the one made publicly available in PDF format at www.etsi.org/deliver.

Users of the present document should be aware that the document may be subject to revision or change of status.

Information on the current status of this and other ETSI documents is available at

<https://portal.etsi.org/TB/ETSIDeliverableStatus.aspx>

If you find errors in the present document, please send your comment to one of the following services:

<https://portal.etsi.org/People/CommitteeSupportStaff.aspx>

If you find a security vulnerability in the present document, please report it through our
Coordinated Vulnerability Disclosure Program:

<https://www.etsi.org/standards/coordinated-vulnerability-disclosure>

Notice of disclaimer & limitation of liability

The information provided in the present deliverable is directed solely to professionals who have the appropriate degree of experience to understand and interpret its content in accordance with generally accepted engineering or other professional standard and applicable regulations.

No recommendation as to products and services or vendors is made or should be implied.

No representation or warranty is made that this deliverable is technically accurate or sufficient or conforms to any law and/or governmental rule and/or regulation and further, no representation or warranty is made of merchantability or fitness for any particular purpose or against infringement of intellectual property rights.

In no event shall ETSI be held liable for loss of profits or any other incidental or consequential damages.

Any software contained in this deliverable is provided "AS IS" with no warranties, express or implied, including but not limited to, the warranties of merchantability, fitness for a particular purpose and non-infringement of intellectual property rights and ETSI shall not be held liable in any event for any damages whatsoever (including, without limitation, damages for loss of profits, business interruption, loss of information, or any other pecuniary loss) arising out of or related to the use of or inability to use the software.

Copyright Notification

No part may be reproduced or utilized in any form or by any means, electronic or mechanical, including photocopying and microfilm except as authorized by written permission of ETSI.

The content of the PDF version shall not be modified without the written authorization of ETSI.

The copyright and the foregoing restriction extend to reproduction in all media.

© ETSI 2022.
All rights reserved.

Intellectual Property Rights

Essential patents

IPRs essential or potentially essential to normative deliverables may have been declared to ETSI. The declarations pertaining to these essential IPRs, if any, are publicly available for **ETSI members and non-members**, and can be found in ETSI SR 000 314: "*Intellectual Property Rights (IPRs); Essential, or potentially Essential, IPRs notified to ETSI in respect of ETSI standards*", which is available from the ETSI Secretariat. Latest updates are available on the ETSI Web server (<https://ipr.etsi.org/>).

Pursuant to the ETSI Directives including the ETSI IPR Policy, no investigation regarding the essentiality of IPRs, including IPR searches, has been carried out by ETSI. No guarantee can be given as to the existence of other IPRs not referenced in ETSI SR 000 314 (or the updates on the ETSI Web server) which are, or may be, or may become, essential to the present document.

Trademarks

The present document may include trademarks and/or tradenames which are asserted and/or registered by their owners. ETSI claims no ownership of these except for any which are indicated as being the property of ETSI, and conveys no right to use or reproduce any trademark and/or tradename. Mention of those trademarks in the present document does not constitute an endorsement by ETSI of products, services or organizations associated with those trademarks.

DECT™, **PLUGTESTS™**, **UMTS™** and the ETSI logo are trademarks of ETSI registered for the benefit of its Members. **3GPP™** and **LTE™** are trademarks of ETSI registered for the benefit of its Members and of the 3GPP Organizational Partners. **oneM2M™** logo is a trademark of ETSI registered for the benefit of its Members and of the oneM2M Partners. **GSM®** and the GSM logo are trademarks registered and owned by the GSM Association.

Legal Notice

This Technical Specification (TS) has been produced by ETSI 3rd Generation Partnership Project (3GPP).

The present document may refer to technical specifications or reports using their 3GPP identities. These shall be interpreted as being references to the corresponding ETSI deliverables.

The cross reference between 3GPP and ETSI identities can be found under <http://webapp.etsi.org/key/queryform.asp>.

Modal verbs terminology

In the present document "**shall**", "**shall not**", "**should**", "**should not**", "**may**", "**need not**", "**will**", "**will not**", "**can**" and "**cannot**" are to be interpreted as described in clause 3.2 of the [ETSI Drafting Rules](#) (Verbal forms for the expression of provisions).

"**must**" and "**must not**" are **NOT** allowed in ETSI deliverables except when used in direct citation.

Contents

Intellectual Property Rights	2
Legal Notice	2
Modal verbs terminology.....	2
Foreword.....	4
1 Scope	5
2 References	5
3 Definitions and abbreviations.....	5
4 Network initiated location services operations.....	6
4.1 Location Notification	6
4.1.1 Normal operation	6
4.2 Deferred MT-LR Area Event	6
4.2.1 Area Event Request	6
4.2.2 Area Event Report	7
4.2.3 Area Event Cancellation	9
4.3 Deferred MT-LR Periodic Location Event.....	9
4.3.1 MT-LR LCS Periodic Location.....	9
4.3.2 LCS Location Update.....	10
4.3.3 Periodic Event Cancellation	10
5 Mobile initiated location services operations	11
5.1 Mobile Originated Location Request (MO-LR)	11
5.1.1 Normal operation.....	11
Annex A (informative): Change History	14
History	15

Foreword

This Technical Specification (TS) has been produced by the 3rd Generation Partnership Project (3GPP).

The contents of the present document are subject to continuing work within the TSG and may change following formal TSG approval. Should the TSG modify the contents of the present document, it will be re-released by the TSG with an identifying change of release date and an increase in version number as follows:

Version x.y.z

where:

- x the first digit:
 - 1 presented to TSG for information;
 - 2 presented to TSG for approval;
 - 3 or greater indicates TSG approved document under change control.
- y the second digit is incremented for all changes of substance, i.e. technical enhancements, corrections, updates, etc.
- z the third digit is incremented when editorial only changes have been incorporated in the document.

1 Scope

The present document gives the stage 3 description of the Location Service (LCS) operations for mobile station. These operations shall apply to both CS and PS domain.

The group of location services operations is divided into two different classes:

- Network initiated location services operations (clause 4);
- Mobile initiated location services operations (clause 5).

2 References

The following documents contain provisions which, through reference in this text, constitute provisions of the present document.

- References are either specific (identified by date of publication, edition number, version number, etc.) or non-specific.
- For a specific reference, subsequent revisions do not apply.
- For a non-specific reference, the latest version applies. In the case of a reference to a 3GPP document (including a GSM document), a non-specific reference implicitly refers to the latest version of that document *in the same Release as the present document*.

- [1] 3GPP TS 21.905: "Abbreviations and acronyms".
- [2] 3GPP TS 23.271: "Functional stage 2 description of LCS".
- [3] 3GPP TS 24.080: "Mobile radio interface layer 3 supplementary services specification; Formats and coding".
- [4] 3GPP TS 23.032: "Universal Geographical Area Description (GAD)"

3 Definitions and abbreviations

Abbreviations used in the present document are listed in 3GPP TS 21.905 and 3GPP TS 23.271.

The following terms are used in the present document:

- **MS**, Mobile Station. The present document makes no distinction between MS and UE.

4 Network initiated location services operations

4.1 Location Notification

4.1.1 Normal operation

The network invokes a location notification procedure by sending a REGISTER message containing a LCS-LocationNotification invoke component to the MS. This may be sent either to request verification for MT-LR or to notify about already authorized MT-LR.

In case of privacy verification the MS shall respond to the request by sending a RELEASE COMPLETE message containing the mobile subscriber's response in a return result component (figure 4.1).

If the timer T(LCSN) expires in the network before any response from the MS (e.g. due to no response from the user), the network shall interpret this by applying the default treatment defined in TS 23.271 (i.e. disallow location if barred by subscription and allow location if allowed by subscription).

In the case of location notification no response is required from the MS, the MS shall terminate the dialogue by sending a RELEASE COMPLETE message containing a LocationNotification return result.

If the MS is unable to process the request received from the network, it shall return an error indication by sending a RELEASE COMPLETE message containing a return error component. Error values are specified in 3GPP TS 24.080

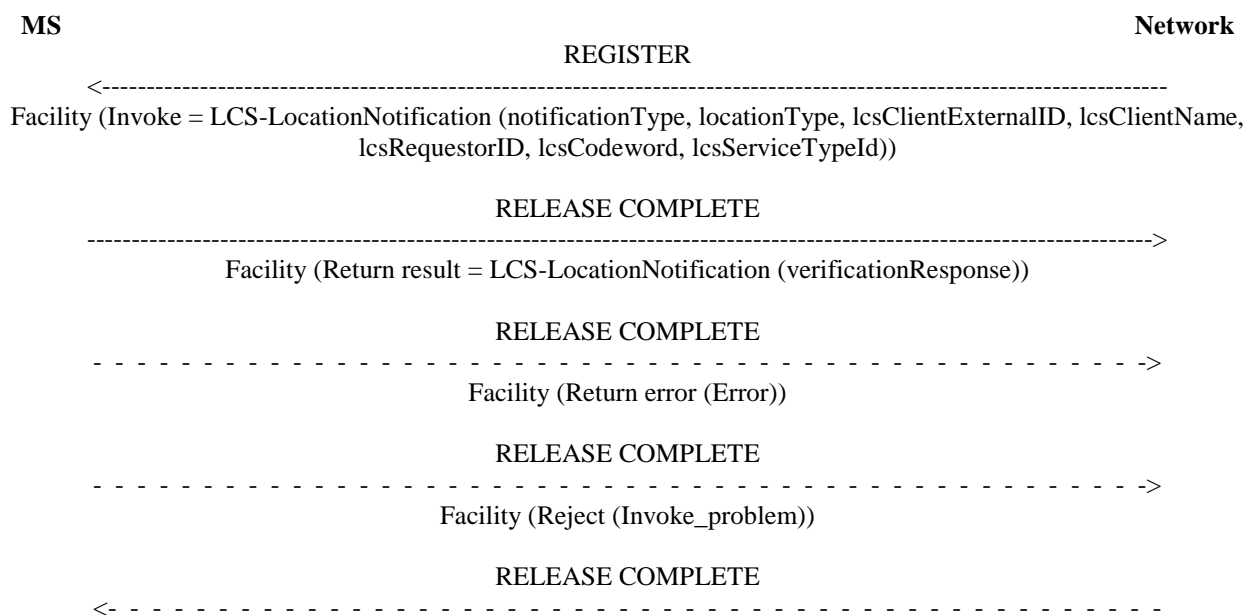


Figure 4.1: Location Notification

4.2 Deferred MT-LR Area Event

4.2.1 Area Event Request

The network invokes a Deferred MT-LR Area Event procedure by sending a REGISTER message containing an LCS-Area Event invoke component to the MS.

If the MS is unable to process the request received from the network, it shall return an error indication by sending a RELEASE COMPLETE message containing a return error component. Error values are specified in 3GPP TS 24.080

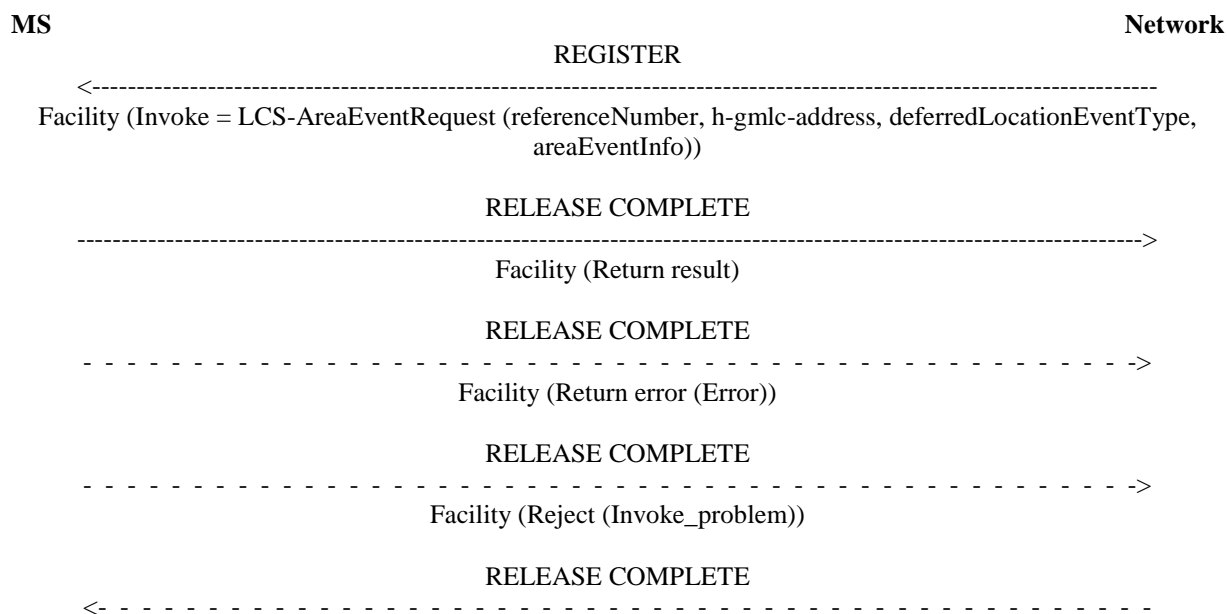


Figure 4.2: Area Event Request

4.2.2 Area Event Report

The MS invokes an Area Event Report by sending a REGISTER message to the network containing an LCS-AreaEventReport invoke component. SS Version Indicator value 1 or above shall be used.

The MS may use the Area Event Report also when cancelling the Area Event Request while monitoring the event.

The receiving network entity shall forward the Area Event Report to the H-GMLC which was included in the invoke component directly or via its associated V-GMLC.

The MS may terminate the dialogue by sending a RELEASE COMPLETE message for a single location request (see figure 4.3). The MS may also initiate another Area Event Report operation by sending a FACILITY message to the network containing an LCS-AreaEventReport invoke component (see figure 4.4). After the Area Event Report operation the MS shall terminate the dialogue by sending a RELEASE COMPLETE message.

If the network cannot successfully process the Area Event Report received from the MS, it shall clear the transaction by sending a RELEASE COMPLETE message containing a return error component. Error values are specified in 3GPP TS 24.080.

If the network has returned a result to the MS in a FACILITY message but, after some PLMN administered time period has elapsed, the network has not received either a new Area Event Report operation in a FACILITY message or a RELEASE COMPLETE message from the MS, the network may clear the transaction by sending a RELEASE COMPLETE message.

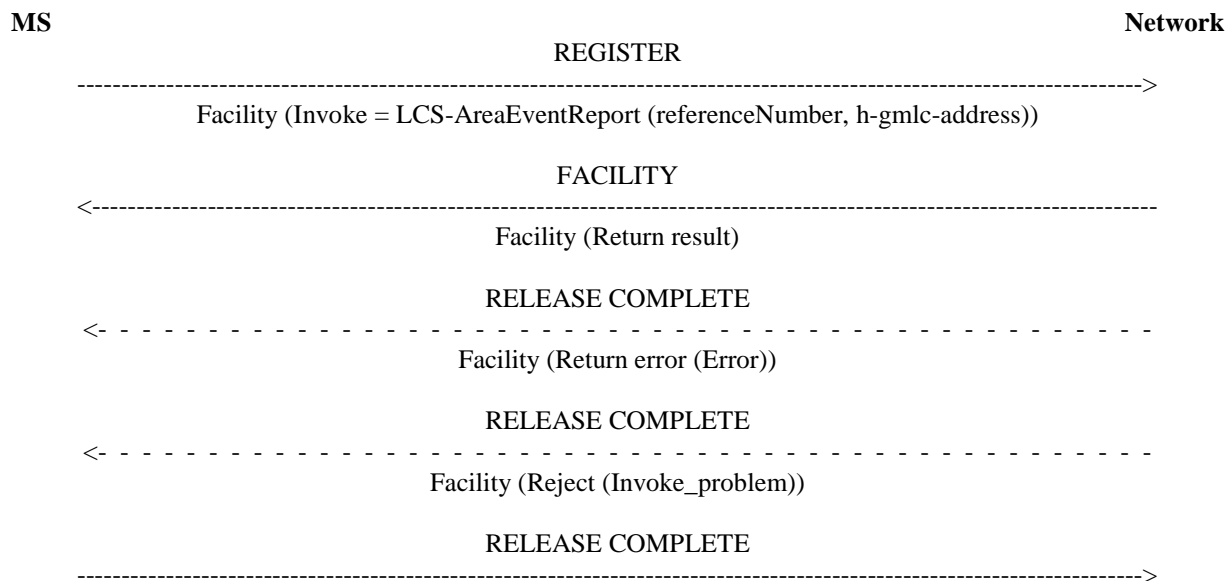


Figure 4.3: Single Area Event Report

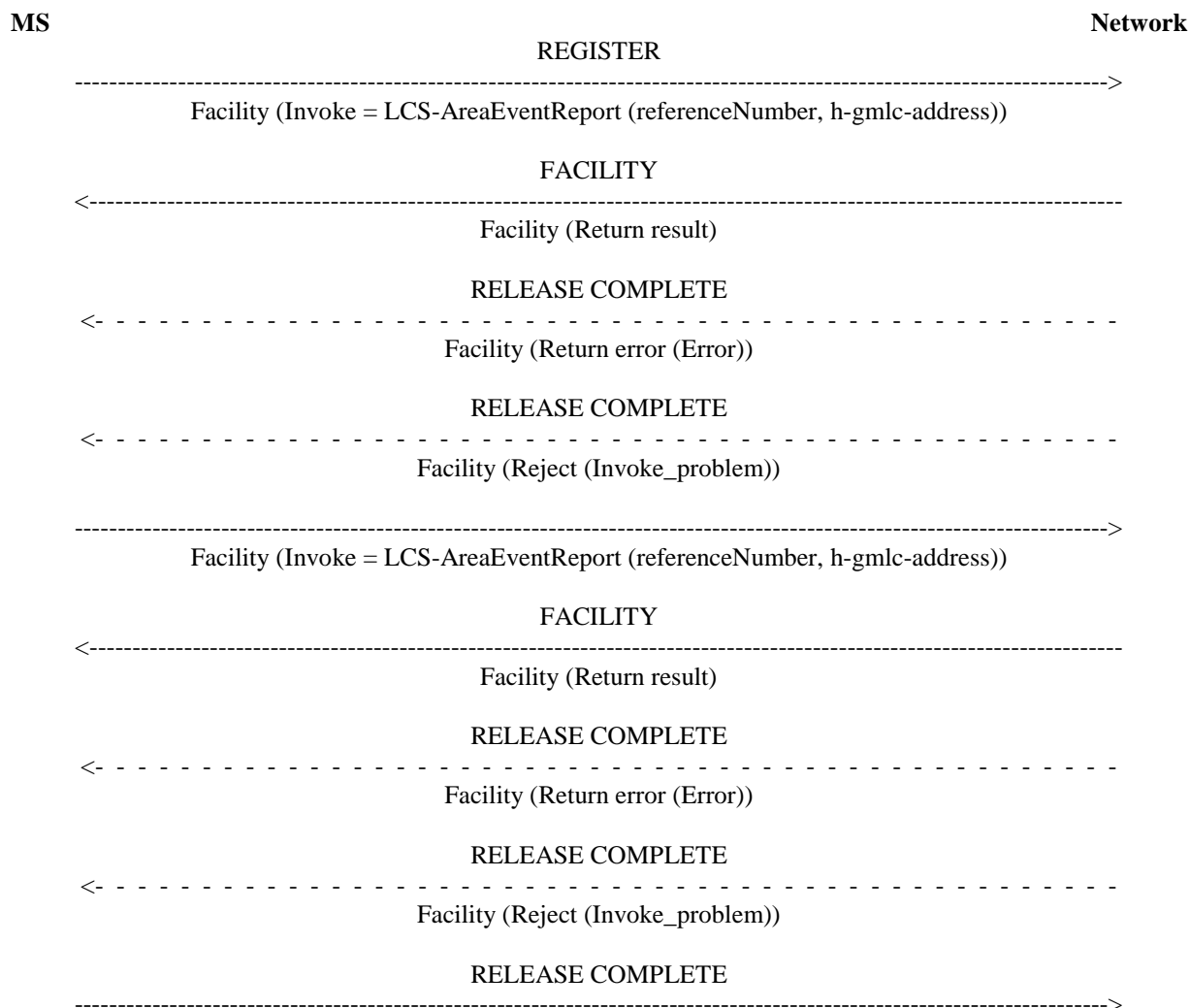


Figure 4.4: Multiple Area Event Reports

4.2.3 Area Event Cancellation

The network invokes a Deferred MT-LR Area Event Cancellation procedure by sending a REGISTER message containing an LCS-Area Event Cancellation invoke component to the MS.

If the MS is unable to process the request received from the network, it shall return an error indication by sending a RELEASE COMPLETE message containing a return error component. Error values are specified in 3GPP TS 24.080

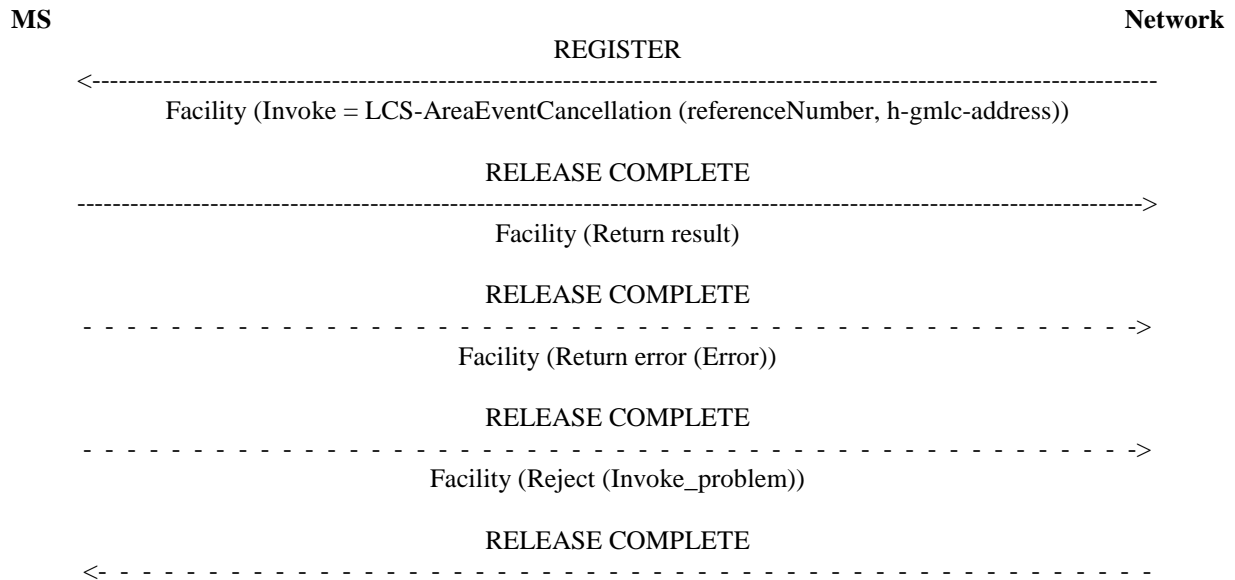


Figure 4.5: Area Event Cancellation

4.3 Deferred MT-LR Periodic Location Event

4.3.1 MT-LR LCS Periodic Location

The network invokes a Deferred MT-LR Periodic Location Event by sending a REGISTER message containing an LCS Periodic Location invoke component to the MS.

If the MS is unable to process the request received from the network, it shall return an error indication by sending a RELEASE COMPLETE message containing a return error component. Error values are specified in 3GPP TS 24.080.

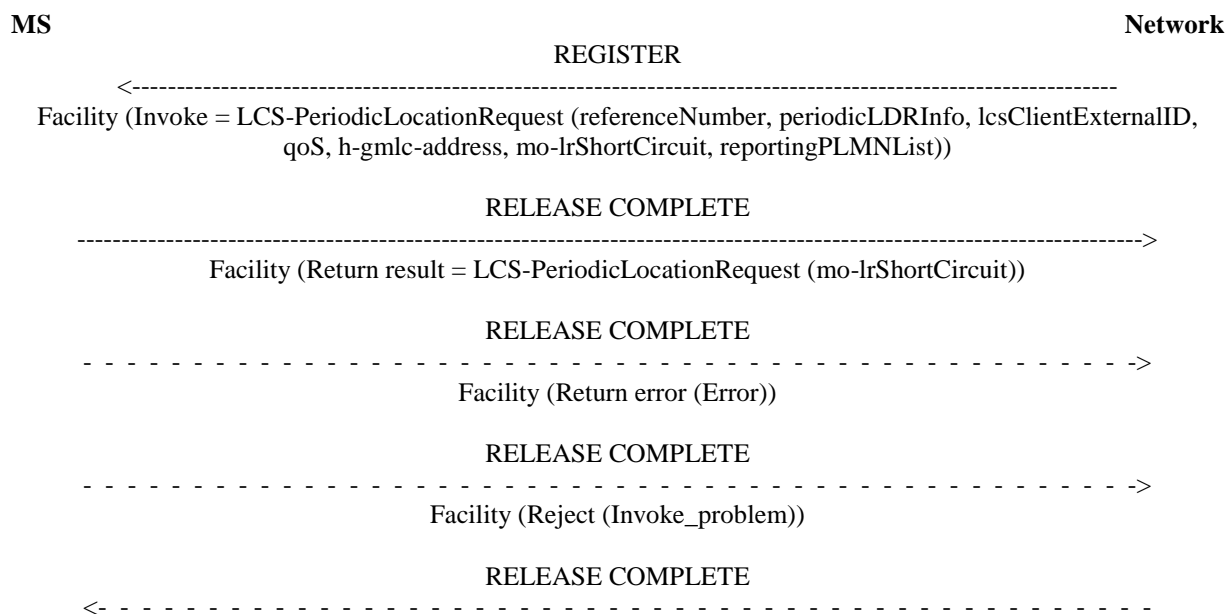


Figure 4.6: Periodic Location Request

4.3.2 LCS Location Update

The network invokes a location update procedure by sending a REGISTER message containing an LCS Location Update invoke component to the MS.

If the MS is unable to process the request received from the network, it shall return an error indication by sending a RELEASE COMPLETE message containing a return error component. Error values are specified in 3GPP TS 24.080.

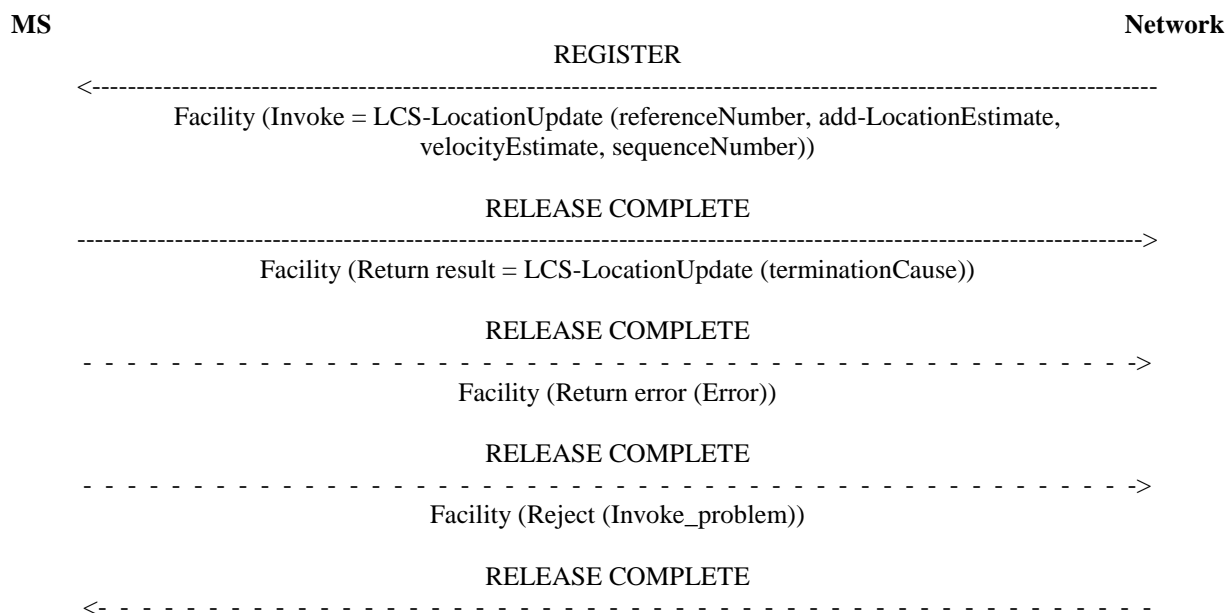


Figure 4.7: Location Update

4.3.3 Periodic Event Cancellation

The network invokes a Deferred MT-LR Periodic Location Cancellation procedure by sending a REGISTER message containing an LCS-Periodic Location Cancellation invoke component to the MS.

If the MS is unable to process the request received from the network, it shall return an error indication by sending a RELEASE COMPLETE message containing a return error component. Error values are specified in 3GPP TS 24.080.

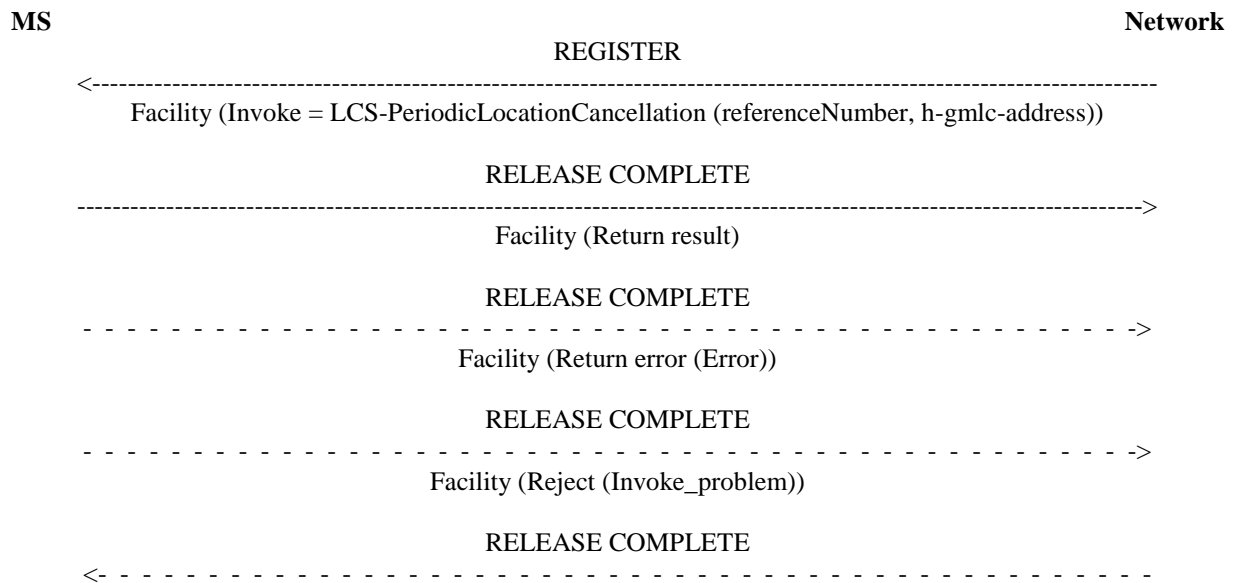


Figure 4.8: Periodic Location Cancellation

5 Mobile initiated location services operations

5.1 Mobile Originated Location Request (MO-LR)

5.1.1 Normal operation

The MS invokes a MO-LR by sending a REGISTER message to the network containing a LCS-MOLR invoke component. SS Version Indicator value 1 or above shall be used.

The receiving network entity shall initiate the handling of location request in the network. The network shall pass the result of the location procedure to the MS by sending a FACILITY message to the MS containing a LCS-MOLR return result component. When location estimate is kept in the network entity and this information satisfies the requested accuracy and the requested maximum age of location, then the network may reuse this information and the positioning measurement procedure may be skipped.

The network shall pass the result of the location procedure to the MS only if the location estimate is given in a format that the MS supports, as indicated by either the presence (and content) or the absence of the parameter supportedGADShapes, which may be sent by the MS in the LCS-MOLR operation.

The MS may terminate the dialogue by sending a RELEASE COMPLETE message in the case of single location request (see figure 5.1). The MS may also initiate another location request operation by sending a FACILITY message to the network containing a LCS-MOLR invoke component (see figure 5.2). After the last location request operation the MS shall terminate the dialogue by sending a RELEASE COMPLETE message.

If the network is unable to successfully fulfil the request received from the MS (e.g. to provide a location estimate or location assistance information), it shall clear the transaction by sending a RELEASE COMPLETE message containing a return error component. Error values are specified in 3GPP TS 24.080. If the network is unable to provide a location estimate due to lack of support in the MS for the type of shape of the location estimate, then it shall use the error Facility Not Supported.

If the network has returned a result to the MS in a FACILITY message but, after some PLMN administered time period has elapsed, has not received either a new location request operation in a FACILITY message or a RELEASE

COMPLETE message from the MS, the network may clear the transaction by sending a RELEASE COMPLETE message.

During the MO-LR operation the MS shall run a timer T(LCSL). This timer is started when the operation is sent, and stopped when a response is received from the network. If this timer expires the MS shall assume that the operation has failed, and may terminate the dialogue by sending a RELEASE COMPLETE message, and shall inform the user of the failure.

To support Periodic Location features (see TS 23.271 for details), the LCS-MOLR Invoke and the LCS-MOLR Return Result components carry the periodic location information between the MS and the network. These information are applicable to the instigation, cancellation, and reporting of the periodic location event and the location estimates.

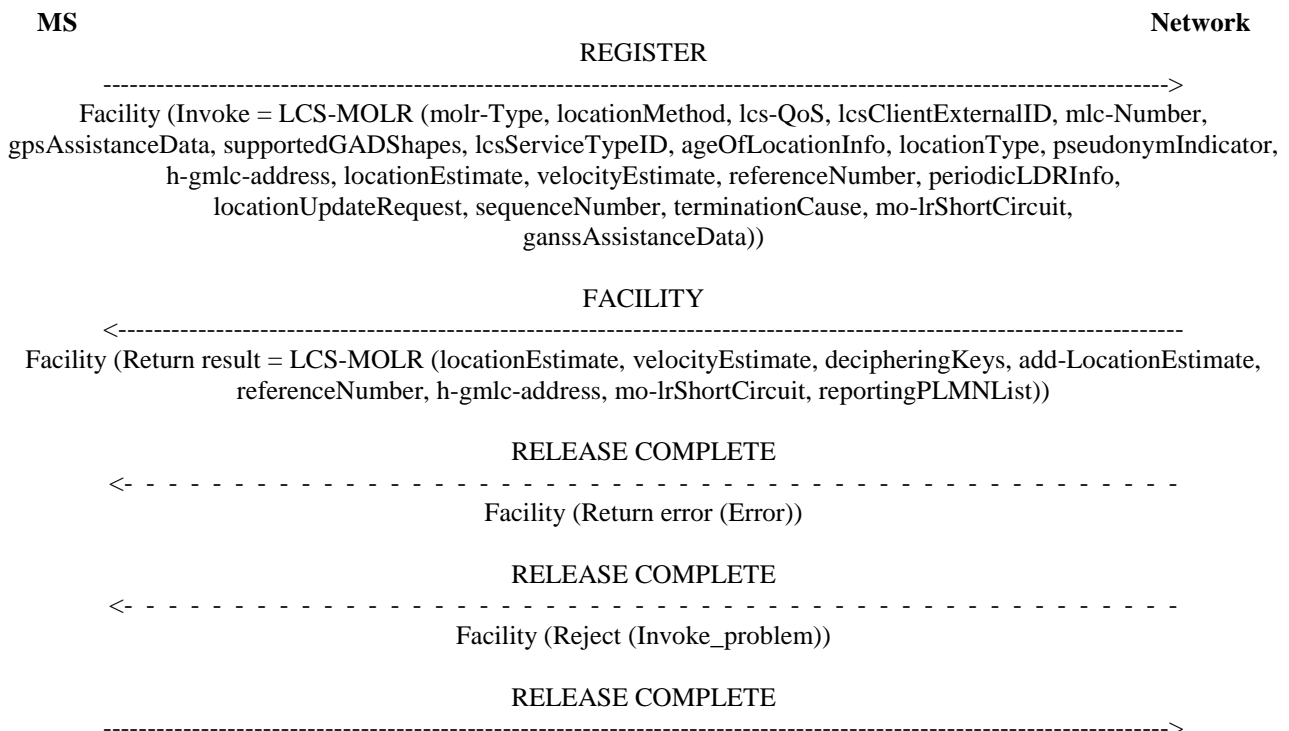


Figure 5.1: Single mobile originated location request

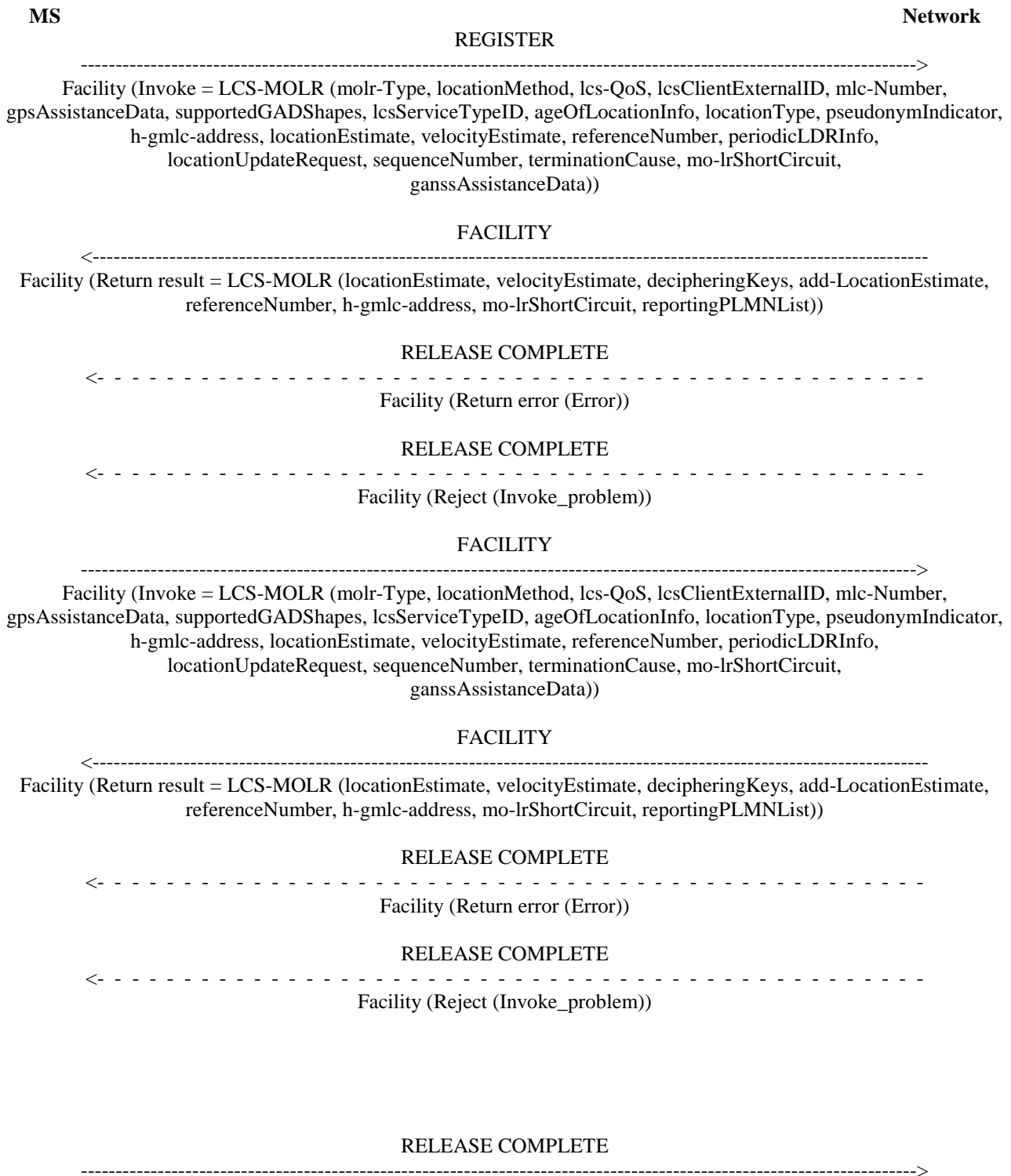


Figure 5.2: Multiple mobile originated location requests

Annex A (informative): Change History

Change history							
Date	Meeting	TDoc	CR	R ev	Cat	Subject/Comment	New version
CN#07			-			04.30 v7.1.0 - Transferred to 3GPP	3.0.0
CN#08			001	1		Clarifications on GSM vs. UMTS specific parts	3.1.0
CN#08			002			Correction of MO-LR procedure for LCS	3.1.0
CN#11						Version increased from R99 to Rel-4 after CN#11	4.0.0
CN#11			003	1		Adaptation of SS to PS domain	4.0.0
CN#12			005			Handle new parameters in LCS-MOLR	4.1.0
CN#14			009			Specify usage of SS Version Indicator	4.2.0
CN#14			011			Correction of MO-LR procedure	4.2.0
CN#15			012			Introduction of the "Requestor ID"	5.0.0
CN#16			013			LCS: Codeword and Service Type	5.1.0
CN#22			014	1		Deferred MT-LR Area Event	6.0.0
CN#23			015			Removal of R-GMLC Address	6.1.0
CN#23			016			MO-LR Service Identity support	6.1.0
CN#26			020	1		Correction of missing description for T(LCSN) and T(LCSL)	6.2.0
CN#27			023	1		Pseudonym indicator support in MO-LR	6.3.0
CT#29			024	1		Enabling the Providing of Velocity	7.0.0
CT#29			0025			Addition of Periodic Location Feature Support	7.1.0
CT#36			0026	1		Add Assisted GANSS as a New Positioning Method	7.2.0
CT#36			0028			Unimplemented CR for Reuse of UEs location	7.2.0
CT#42						Upgraded unchanged from Rel-7	8.0.0
2009-12			-			Update to Rel-9 version (MCC)	9.0.0
2011-03			-			Update to Rel-10 version (MCC)	10.0.0
2012-09			-			Update to Rel-11 version (MCC)	11.0.0
2014-09			-			Update to Rel-12 version (MCC)	12.0.0
2015-12			-			Update to Rel-13 version (MCC)	13.0.0
2017-03			-			Update to Rel-14 version (MCC)	14.0.0
2018-06			-			Update to Rel-15 version (MCC)	15.0.0
2020-07			-			Update to Rel-16 version (MCC)	16.0.0
2022-03	CT#95e		-			Update to Rel-17 version (MCC)	17.0.0

History

Document history		
V17.0.0	April 2022	Publication