

# ETSI TS 104 144 V1.4.1 (2026-05)



**TECHNICAL SPECIFICATION**

**Interface definition for the e-Evidence  
Regulation (EU) 2023/1543 for National Authorities and  
Service Providers**

---

**Reference**

RTS/LI-00318

---

**Keywords**

lawful disclosure

**ETSI**

650 Route des Lucioles  
F-06921 Sophia Antipolis Cedex - FRANCE

---

Tel.: +33 4 92 94 42 00 Fax: +33 4 93 65 47 16

Siret N° 348 623 562 00017 - APE 7112B  
Association à but non lucratif enregistrée à la  
Sous-Préfecture de Grasse (06) N° w061004871

---

**Important notice**

The present document can be downloaded from the  
[ETSI Search & Browse Standards](#) application.

The present document may be made available in electronic versions and/or in print. The content of any electronic and/or print versions of the present document shall not be modified without the prior written authorization of ETSI. In case of any existing or perceived difference in contents between such versions and/or in print, the prevailing version of an ETSI deliverable is the one made publicly available in PDF format on [ETSI deliver](#) repository.

Users should be aware that the present document may be revised or have its status changed,  
this information is available in the [Milestones listing](#).

If you find errors in the present document, please send your comments to  
the relevant service listed under [Committee Support Staff](#).

If you find a security vulnerability in the present document, please report it through our  
[Coordinated Vulnerability Disclosure \(CVD\)](#) program.

---

**Notice of disclaimer & limitation of liability**

The information provided in the present deliverable is directed solely to professionals who have the appropriate degree of experience to understand and interpret its content in accordance with generally accepted engineering or other professional standard and applicable regulations.

No recommendation as to products and services or vendors is made or should be implied.

No representation or warranty is made that this deliverable is technically accurate or sufficient or conforms to any law and/or governmental rule and/or regulation and further, no representation or warranty is made of merchantability or fitness for any particular purpose or against infringement of intellectual property rights.

In no event shall ETSI be held liable for loss of profits or any other incidental or consequential damages.

Any software contained in this deliverable is provided "AS IS" with no warranties, express or implied, including but not limited to, the warranties of merchantability, fitness for a particular purpose and non-infringement of intellectual property rights and ETSI shall not be held liable in any event for any damages whatsoever (including, without limitation, damages for loss of profits, business interruption, loss of information, or any other pecuniary loss) arising out of or related to the use of or inability to use the software.

---

**Copyright Notification**

No part may be reproduced or utilized in any form or by any means, electronic or mechanical, including photocopying and microfilm except as authorized by written permission of ETSI.

The content of the PDF version shall not be modified without the written authorization of ETSI.

The copyright and the foregoing restriction extend to reproduction in all media.

© ETSI 2026.  
All rights reserved.

# Contents

Intellectual Property Rights .....	6
Foreword.....	6
Modal verbs terminology.....	6
Introduction .....	6
1 Scope .....	7
2 References .....	7
2.1 Normative references .....	7
2.2 Informative references.....	7
3 Definition of terms, symbols and abbreviations.....	8
3.1 Terms.....	8
3.2 Symbols.....	8
3.3 Abbreviations .....	8
4 Reference Model .....	9
4.1 Wider system of interest.....	9
4.2 API definition .....	10
4.2.1 Approach .....	10
4.2.2 Business Workflows .....	11
4.2.3 Protocol definition .....	11
5 SP Workflow Endpoints.....	12
5.1 Defined endpoints.....	12
5.2 Common procedures and constraints.....	13
5.2.1 Message exchange .....	13
5.2.2 Message contents .....	14
5.3 Production Workflow Endpoint .....	14
5.3.1 Description.....	14
5.3.2 Message contents .....	14
5.3.3 AuthorisationObject.....	15
5.3.4 LDTask Objects .....	21
5.3.5 Encryption Objects .....	25
5.4 New Deadline Workflow Endpoint .....	25
5.4.1 Description.....	25
5.4.2 Message contents .....	25
5.4.3 LDTaskObject.....	25
5.5 Grounds For Refusal Endpoint .....	26
5.5.1 Description.....	26
5.5.2 Message contents .....	26
5.5.3 Document Object.....	27
5.5.4 EPOCNoGroundsForRefusal Object .....	27
5.5.5 EPOCFullRefusalInformation Object.....	27
5.5.6 EPOCPartialRefusalInformation Object.....	28
5.5.7 LDTask Objects .....	29
5.6 Withdraw Workflow Endpoint .....	29
5.6.1 Description.....	29
5.6.2 Message contents .....	29
5.6.3 AuthorisationObject.....	30
5.7 Preservation Workflow Endpoint .....	30
5.7.1 Description.....	30
5.7.2 Message contents .....	30
5.7.3 AuthorisationObject.....	30
5.7.4 LPTask Objects.....	32
5.8 Subsequent Production Workflow Endpoint .....	33
5.8.1 Description.....	33
5.8.2 Message contents .....	33

5.8.3	LPTask Object .....	33
5.9	Preservation Extension Workflow Endpoint .....	34
5.9.1	Description.....	34
5.9.2	Message contents .....	34
5.9.3	LPTask Object .....	34
5.10	End Preservation Workflow Endpoint.....	34
5.10.1	Description.....	34
5.10.2	Message contents .....	34
5.10.3	LPTaskObjects.....	35
5.11	Delivery Status Workflow Endpoint .....	35
5.11.1	Description.....	35
5.11.2	Message Contents .....	35
5.11.3	DeliveryObjects .....	35
5.12	Correspondence Workflow Endpoint .....	36
5.12.1	Description.....	36
5.12.2	Message contents .....	36
5.12.3	DocumentObject.....	36
5.13	NonExecution Status Workflow Endpoint .....	38
5.13.1	Description.....	38
5.13.2	Message Contents .....	38
5.13.3	DocumentObject.....	38
6	WISP Workflow Endpoints.....	38
6.1	Defined endpoints.....	38
6.2	Common procedures and constraints.....	39
6.2.1	Message exchange .....	39
6.2.2	Message contents .....	39
6.3	Outcome Endpoint.....	40
6.3.1	Description.....	40
6.3.2	Message contents .....	40
6.3.3	DeliveryObject.....	40
6.3.4	NotificationObject .....	41
6.4	Non Execution Workflow Endpoint .....	42
6.4.1	Description.....	42
6.4.2	Message contents .....	42
6.4.3	NotificationObject .....	42
6.4.4	Form3Information.....	44
6.5	Data Preserved Workflow Endpoint.....	45
6.5.1	Description.....	45
6.5.2	Message contents .....	45
6.5.3	NotificationObject .....	46
6.6	Correspondence Endpoint .....	46
6.6.1	Description.....	46
6.6.2	Message contents .....	46
6.6.3	DocumentObject.....	46
6.7	Confirm Withdrawal Workflow Endpoint.....	47
6.7.1	Description.....	47
6.7.2	Message contents .....	47
6.7.3	NotificationObject .....	47
6.8	Enforcing Authority Identifier Endpoint .....	48
6.8.1	Description.....	48
6.8.2	Message contents .....	48
6.9	Authorities Query Endpoint .....	48
6.9.1	Description.....	48
6.9.2	AuthorityObject .....	49
6.9.3	Message contents .....	49
7	Transport and security .....	50
7.1	Transport .....	50
7.2	Security .....	50
<b>Annex A (normative):</b>	<b>Object Model.....</b>	<b>51</b>

A.1	Object Model.....	51
<b>Annex B (normative):</b>	<b>Supplementary information in Workflow Endpoints.....</b>	<b>52</b>
B.1	Overview .....	52
B.2	EPOCAdditionalInfo .....	52
B.3	Arbitrary attachments.....	52
<b>Annex C (normative):</b>	<b>DocumentObject encoding for EPOC/EPOC-PR forms.....</b>	<b>53</b>
C.1	Overview .....	53
C.2	DocumentObject fields.....	53
<b>Annex D (informative):</b>	<b>Examples.....</b>	<b>54</b>
D.1	Example files.....	54
<b>Annex E (informative):</b>	<b>Change history .....</b>	<b>55</b>
	History .....	56

---

# Intellectual Property Rights

## Essential patents

IPRs essential or potentially essential to normative deliverables may have been declared to ETSI. The declarations pertaining to these essential IPRs, if any, are publicly available for **ETSI members and non-members**, and can be found in ETSI SR 000 314: "*Intellectual Property Rights (IPRs); Essential, or potentially Essential, IPRs notified to ETSI in respect of ETSI standards*", which is available from the ETSI Secretariat. Latest updates are available on the [ETSI IPR online database](#).

Pursuant to the ETSI Directives including the ETSI IPR Policy, no investigation regarding the essentiality of IPRs, including IPR searches, has been carried out by ETSI. No guarantee can be given as to the existence of other IPRs not referenced in ETSI SR 000 314 (or the updates on the ETSI Web server) which are, or may be, or may become, essential to the present document.

## Trademarks

The present document may include trademarks and/or tradenames which are asserted and/or registered by their owners. ETSI claims no ownership of these except for any which are indicated as being the property of ETSI, and conveys no right to use or reproduce any trademark and/or tradename. Mention of those trademarks in the present document does not constitute an endorsement by ETSI of products, services or organizations associated with those trademarks.

**DECT™**, **PLUGTESTS™**, **UMTS™** and the ETSI logo are trademarks of ETSI registered for the benefit of its Members. **3GPP™**, **LTE™** and **5G™** logo are trademarks of ETSI registered for the benefit of its Members and of the 3GPP Organizational Partners. **oneM2M™** logo is a trademark of ETSI registered for the benefit of its Members and of the oneM2M Partners. **GSM®** and the GSM logo are trademarks registered and owned by the GSM Association.

---

# Foreword

This Technical Specification (TS) has been produced by ETSI Technical Committee Lawful Interception (LI).

---

# Modal verbs terminology

In the present document "**shall**", "**shall not**", "**should**", "**should not**", "**may**", "**need not**", "**will**", "**will not**", "**can**" and "**cannot**" are to be interpreted as described in clause 3.2 of the [ETSI Drafting Rules](#) (Verbal forms for the expression of provisions).

"**must**" and "**must not**" are **NOT** allowed in ETSI deliverables except when used in direct citation.

---

# Introduction

The present document provides an interface definition for the e-Evidence Regulation (EU) 2023/1543 [i.1], supporting National Authorities and Service Providers in understanding and complying with its requirements.

---

# 1 Scope

The present document provides an interface definition for the e-Evidence Regulation (EU) 2023/1543 [i.1], supporting National Authorities and Service Providers in understanding and complying with its requirements. The present document provides an overview of the overall solution, defines the workflow profile for ETSI TS 103 120 [1] that facilitates compliance with Regulation (EU) 2023/1543 [i.1] and provides best practices and technical recommendations. The present document serves as a technical interface definition to foster consistent and effective application across the EU.

---

## 2 References

### 2.1 Normative references

References are either specific (identified by date of publication and/or edition number or version number) or non-specific. For specific references, only the cited version applies. For non-specific references, the latest version of the referenced document (including any amendments) applies.

Referenced documents which are not found to be publicly available in the expected location might be found in the [ETSI docbox](#).

NOTE: While any hyperlinks included in this clause were valid at the time of publication, ETSI cannot guarantee their long-term validity.

The following referenced documents are necessary for the application of the present document.

- [1] [ETSI TS 103 120](#): "Lawful Interception (LI); Interface for warrant information".
- [2] [ETSI TS 103 280](#): "Lawful Interception (LI); Dictionary for common parameters".

### 2.2 Informative references

References are either specific (identified by date of publication and/or edition number or version number) or non-specific. For specific references, only the cited version applies. For non-specific references, the latest version of the referenced document (including any amendments) applies.

NOTE: While any hyperlinks included in this clause were valid at the time of publication, ETSI cannot guarantee their long-term validity.

The following referenced documents may be useful in implementing an ETSI deliverable or add to the reader's understanding, but are not required for conformance to the present document.

- [i.1] [Regulation \(EU\) 2023/1543](#) of the European Parliament and of the Council of 12 July 2023 on European Production Orders and European Preservation Orders for electronic evidence in criminal proceedings and for the execution of custodial sentences following criminal proceedings.
- [i.2] [Directive \(EU\) 2018/1972](#) of the European Parliament and of the Council of 11 December 2018 establishing the European Electronic Communications Code.
- [i.3] [Directive \(EU\) 2015/1535](#) of the European Parliament and of the Council of 9 September 2015 laying down a procedure for the provision of information in the field of technical regulations and of rules on Information Society services (codification).
- [i.4] ETSI TS 103 705: "Lawful Interception (LI); Data Structures for Lawful Disclosure".
- [i.5] [Directive \(EU\) 2019/713](#) of the European Parliament and of the Council of 17 April 2019 on combating fraud and counterfeiting of non-cash means of payment and replacing Council Framework Decision 2001/413/JHA.

- [i.6] [Directive 2011/93/EU](#) of the European Parliament and of the Council of 13 December 2011 on combating the sexual abuse and sexual exploitation of children and child pornography, and replacing Council Framework Decision 2004/68/JHA.
- [i.7] [Directive 2013/40/EU](#) of the European Parliament and of the Council of 12 August 2013 on attacks against information systems and replacing Council Framework Decision 2005/222/JHA.
- [i.8] [Directive \(EU\) 2017/541](#) of the European Parliament and of the Council of 15 March 2017 on combating terrorism and replacing Council Framework Decision 2002/475/JHA and amending Council Decision 2005/671/JHA.

## 3 Definition of terms, symbols and abbreviations

### 3.1 Terms

For the purposes of the present document, the following terms apply:

**Form 1:** European Production Order Certificate (EPOC) for the production of electronic evidence, as given in the Regulation [i.1], Annex I

**Form 2:** European Preservation Order Certificate (EPOC-PR) for the preservation of electronic evidence, as given in the Regulation [i.1], Annex II

**Form 3:** information on the impossibility of executing an EPOC / EPOC-PR, as given in the Regulation [i.1], Annex III

**Form 5:** confirmation of issuance of a request for production following a European Preservation Order, as given in the Regulation [i.1], Annex V

**Form 6:** extension of the preservation of electronic evidence, as given in the Regulation [i.1], Annex VI

**the Regulation:** Regulation (EU) 2023/1543 [i.1]

### 3.2 Symbols

Void.

### 3.3 Abbreviations

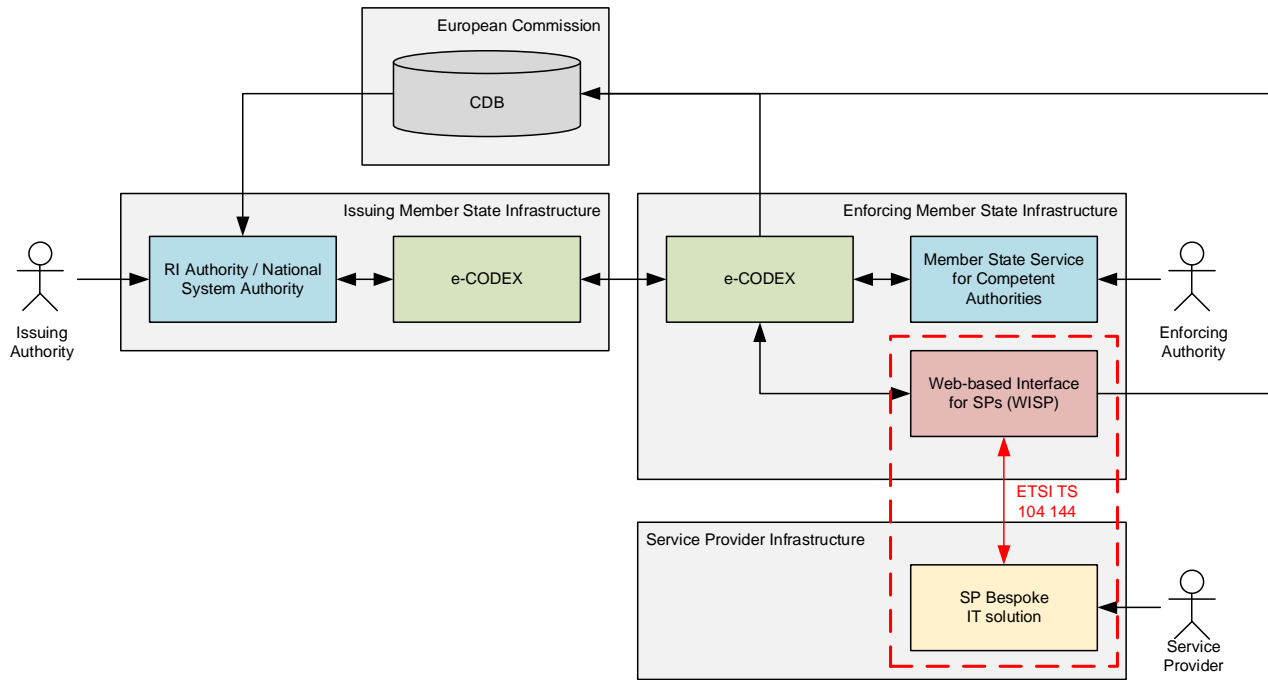
For the purposes of the present document, the following abbreviations apply:

API	Application Programming Interface
CDB	Court DataBase
DIS	Distributed IT System
EPOC	European Production Order Certificate
EPOC-PR	European Preservation Order Certificate
GPRS	General Packet Radio Service
HTTP	Hypertext Transfer Protocol
HTTPS	Hypertext Transfer Protocol (Secure)
ID	IDentifier
IMEI	International Mobile station Equipment Identity
IT	Information Technology
JSON	JavaScript Object Notation
LDID	Lawful Disclosure IDentifier
MAC	Media Access Control
RI	Reference Implementation
SP	Service Provider
URL	Uniform Resource Locator
UUID	Universally Unique IDentifier
WISP	Web-based Interface for Service Providers

## 4 Reference Model

### 4.1 Wider system of interest

The wider system of interest for e-Evidence, as defined by the Regulation [i.1] is given in figure 4.1-1.



**Figure 4.1-1: Wider system of interest**

The actors in the wider system of interest are described in table 4.1-1 using the terms from the Regulation [i.1], Article 3. The definitions are provided for reference and illustration only; for authoritative definitions, consult the Regulation [i.1]. The full system of interest also includes additional actors and functions which are not reproduced in figure 4.1-1 in the interests of clarity. For a full set of definitions, see the Regulation [i.1].

**Table 4.1-1: Actors in e-Evidence wider system of interest**

<b>Actor</b>	<b>Description from e-Evidence regulation [i.1]</b>
Issuing Authority	The competent authority in the Issuing State, which can issue a European Production Order or a European Preservation Order.
Issuing Member State	The Member State from which the European Production Order or the European Preservation Order is issued.
Enforcing Authority	The authority in the Enforcing State, which is competent to receive a European Production Order or a European Preservation Order transmitted by the issuing authority for notification or for enforcement.
Enforcing Member State	The Member State from which the designated establishment is established or the legal representative resides and to which a European Production Order or a European Preservation Order are transmitted by the issuing authority for notification or for enforcement.
Service Provider	Any natural or legal person that provides one or more of the following categories of services, with the exception of financial services: <ul style="list-style-type: none"> <li>(a) electronic communications services as defined in Article 2, point (4), of Directive (EU) 2018/1972 [i.2];</li> <li>(b) internet domain name and IP numbering services, such as IP address assignment, domain name registry, domain name registrar and domain name-related privacy and proxy services;</li> <li>(c) other information society services as referred to in Article 1(1), point (b), of Directive (EU) 2015/1535 [i.3] that: <ul style="list-style-type: none"> <li>(i) enable their users to communicate with each other; or</li> <li>(ii) make it possible to store or otherwise process data on behalf of the users to whom the service is provided, provided that the storage of data is a defining component of the service provided to the user.</li> </ul> </li> </ul>
e-CODEX	Underlying message transport system used by the decentralized IT system.
Member State Service for Competent Authorities	Software component meant for use by Enforcing Authorities to allow access to the decentralized IT system.
Web-based Interface for SPs (WISP)	Software component meant for use by Service Providers to allow access to the decentralized IT system via the API defined in the present document.
SP Bespoke IT Solution	Software component maintained by the Service Providers for the purposes of servicing EPOC and EPOC-PR requests. Colloquially referred to as the "yellow box" outside of the present document.
Court Database (CDB)	The Court Database is the central repository for e-Evidence routing, configuration including the service provider specific inputs and registration information of all the actors in the DIS.

The present document provides a technical means for Service Providers and the Web-based Interface for SPs (WISP) to ensure interoperability and compliance with the wider e-Evidence IT systems as defined in the Regulation [i.1]. It achieves this by defining an API for exchange of e-Evidence-related information between the web-based interface for SPs and the SP Bespoke IT Solution. All other aspects of the wider system of interest are out of scope of the present document.

Implementers should consult with the providers of the WISP prior to using the present document.

NOTE: The WISP interface can also be adapted for use between national IT systems of authorities and the Member State Service for Competent Authorities, but such usage is out of scope of the present document.

## 4.2 API definition

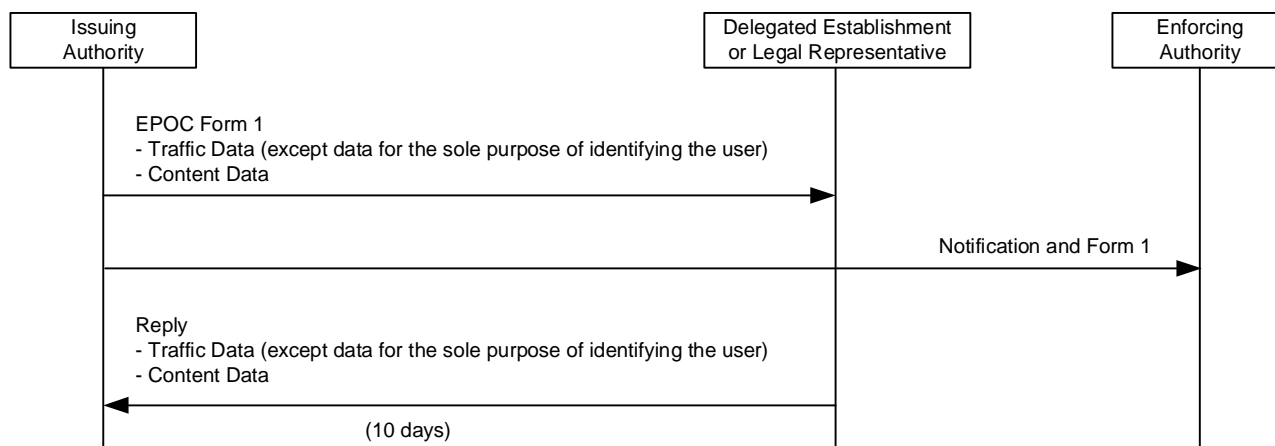
### 4.2.1 Approach

The present document defines an API for exchanging e-Evidence-related information between an WISP and a Service Provider in an Enforcing Member State. This API uses the protocol and framework defined by ETSI TS 103 120 [1], and defines a Workflow Profile (see ETSI TS 103 120 [1], Annex H) that specifies how the messages and fields used in ETSI TS 103 120 [1] are to be used.

## 4.2.2 Business Workflows

The Regulation [i.1] provides a set of business workflows that specify how and when information is to be transferred between the various e-Evidence actors. These business workflows are listed in the [Forge documentation](#) for the present document in the "/workflows" directory. They provide the detailed message exchanges between the various actors.

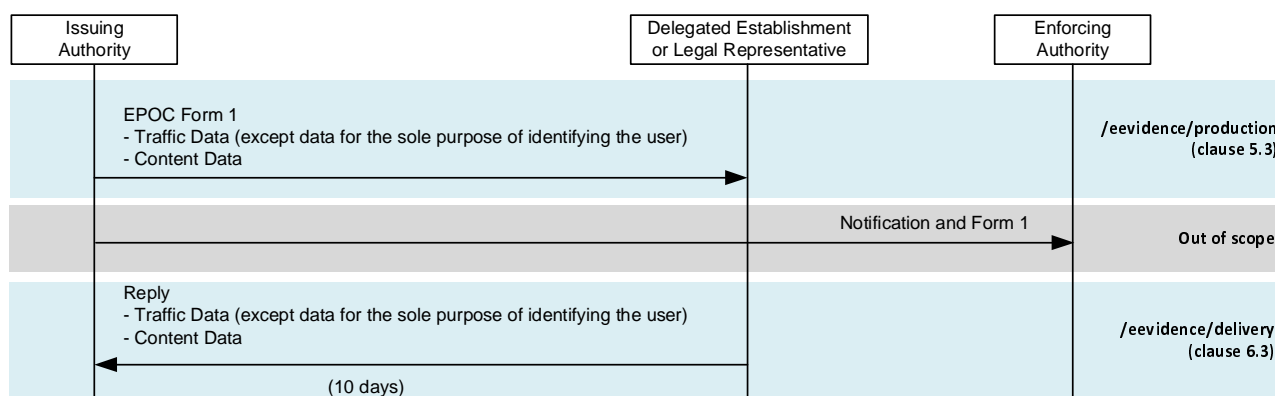
An example of one such workflow is given in figure 4.2.2-1.



**Figure 4.2.2-1: Example business workflow for requesting non-emergency traffic or content data via an EPOC**

The API defines a set of message exchanges ("Workflow Endpoints") which can be used to realize each of the interactions between the Service Provider and either the Issuing Authority or Enforcing Authority which traverses the WISP. Other interactions, such as those between Issuing Authority and Enforcing Authority, or interactions which do not traverse the WISP, are out of scope of the present document.

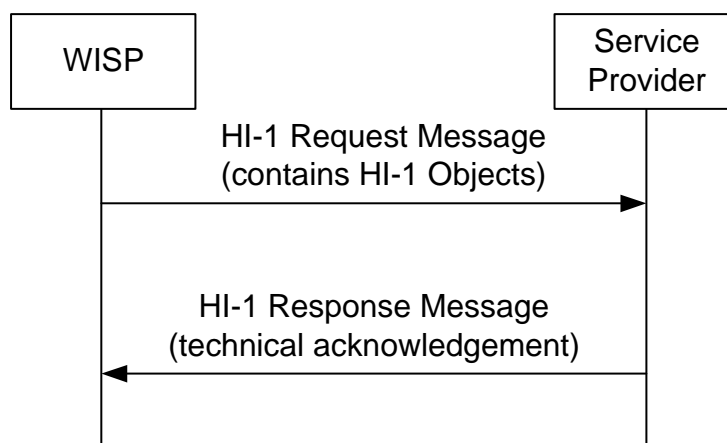
The e-Evidence business workflows can therefore be constructed using one or more of the Workflow Endpoints defined in the present document. As an example, the mapping for the workflow in figure 4.2.2-1 above is given in figure 4.2.2-2 below.



**Figure 4.2.2-2: Example business workflow with Workflow Endpoints**

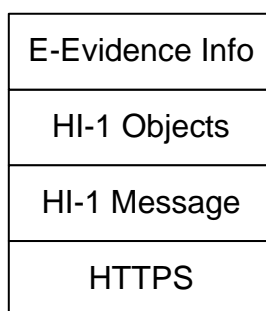
## 4.2.3 Protocol definition

Each Workflow Endpoint defines a message exchange between the WISP or Service Provider, as shown in figure 4.2.3-1.



**Figure 4.2.3-1: Message exchange example (for an SP Workflow-Endpoint)**

Each message exchange using the protocol stack defined in ETSI TS 103 120 [1] and is shown in figure 4.2.3-2. This uses HTTPS to transfer XML-encoded messages ("HI-1 Messages") containing specific representations of state ("HI-1 Objects"). HI-1 Objects carry the information required by the e-Evidence processes.



**Figure 4.2.3-2: Protocol stack**

The present document consists of a set of normative rules for what information is required to be present in each HI-1 Message and HI-1 Object in a given message exchange, and where such information is to be mapped from the e-Evidence Forms. This definition of a message exchanges is called a "Workflow Endpoint". The set of Workflow Endpoints defined by the present document are given in clauses 5.1 and 6.1.

This Workflow Profile is designed to ensure that e-Evidence material such as EPOC or EPOC-PR requests can, to the extent possible, be handled the same way as any other ETSI TS 103 120 [1] disclosure or preservation request. Details which are common to EPOC/EPOC-PR and other forms of disclosure or preservation are mapped to the appropriate place in existing ETSI TS 103 120 [1] structures, whereas details which are specific only to EPOC/EPOC-PR are contained in an EPOC/EPOC-PR-specific HI-1 object (see clause B.2). This approach is intended to maximize the possibility of re-use between EPOC/EPOC-PR systems and other implementations of ETSI TS 103 120 [1].

---

## 5 SP Workflow Endpoints

### 5.1 Defined endpoints

This Workflow Profile defines the following operations that can be invoked at the SP, each of which is exposed as a Workflow Endpoint (see ETSI TS 103 120 [1], clause H.3.1) with a default relative URL path in table 5.1-1.

**Table 5.1-1: SP Workflow Endpoints**

Relative URL path	Description	Reference
/eevidence/production	European Production Order Certificate (EPOC) for the Production of Electronic Evidence (Form 1).	Clause 5.3
/eevidence/newdeadline	Set a new deadline for an EPOC.	Clause 5.4
/eevidence/groundsforrefusal	Enables the Enforcing Authority to communicate whether or not it has grounds for refusal after reviewing Form 1 (with Section M completed) or after the Enforcing Authority having received a Form 3 from the Service Provider.	Clause 5.5
/eevidence/withdraw	A decision of the Issuing Authority to withdraw the initial request, thereby terminating the process.	Clause 5.6
/eevidence/preservation	European Preservation Order Certificate (EPOC-PR) for the Preservation of Electronic Evidence (Form 2).	Clause 5.7
/eevidence/subsequentproduction	Confirmation of Issuance of a Request for Production Following a European Preservation Order (Form 5).	Clause 5.8
/eevidence/preservationextension	Extension of the Preservation of Electronic Evidence (Form 6).	Clause 5.9
/eevidence/endpreservation	Notifies the Service Provider that data preservation is no longer required, ending the preservation obligation.	Clause 5.10
/eevidence/deliverystatus	Notifies the Service Provider that a message has been successfully delivered to an end recipient, or that delivery has failed.	Clause 5.11
/eevidence/correspondence	Used by the Issuing Authority or Enforcing Authority to exchange free-text correspondence and associated documentation with the Service Provider, for any of the following purposes: <ul style="list-style-type: none"> <li>To notify the Service Provider that Issuing Authority, disagreeing with the reasons given in Form 3, is upholding the EPOC and intends to proceed to court.</li> <li>To notify the Service Provider that the Issuing Authority wishes to maintain the initial request upon receipt of Form 3, where reasons for non-execution of the request are explained by the Service Provider, or after discussion with the notified Enforcing Authority.</li> <li>To request additional information from the Service Provider.</li> <li>To provide additional information to the Service Provider in response to a query.</li> <li>To communicate a decision of the Enforcing Authority after receiving an objection from the Service Provider.</li> <li>To notify the Service Provider that the Issuing Authority has initiated enforcement procedures to comply with an EPOC or EPOC-PR.</li> <li>To communicate a decision of the Enforcing Authority to either uphold or not to recognize an order upon the initiation of enforcement procedures by the Issuing Authority.</li> </ul>	Clause 5.12
/eevidence/nonexecutionstatus	Notifies the Service Provider that a NonExecution message has been successfully delivered to an end recipient, or that the transmission of a NonExecution has failed.	Clause 5.13

The URL path is specified relative to the API base URL. Usage of the relative URL path is the default for the endpoint but is not required; different URL paths may be provided by mutual agreement during the onboarding process of an SP.

## 5.2 Common procedures and constraints

### 5.2.1 Message exchange

Each invocation of an SP Workflow Endpoint shall consist of one HI-1 message exchange, as shown in figure 5.2.1-1.

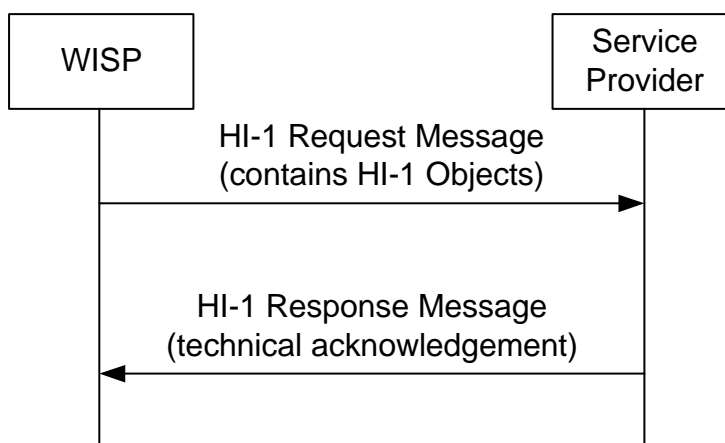


Figure 5.2.1-1: Message exchange for SP Workflow Endpoint

## 5.2.2 Message contents

The Header section of each HI-1 message (see ETSI TS 103 120 [1], clause 6.2) shall be populated as described in table 5.2.2-1 below.

Table 5.2.2-1: HI-1 Message Header

Field	Description	M/C/O	Reference
SenderIdIdentifier	Shall be set to an EndpointID value which identifies the original source of the message (e.g. Issuing Authority or Enforcing Authority).	M	ETSI TS 103 120 [1], clause 6.2.4
ReceiverIdentifier	Shall be set to an EndpointID value which identifies the SP being addressed (e.g. the "Addressee" in Form 1 Section B) and which shall be agreed when the Service Provider is on-boarded to the E-Evidence platform. This may be distinct from the SP concerned in an EPOC or EPOC-PR (e.g. "Service Provider Concerned" in Form 1 Section B).	M	ETSI TS 103 120 [1], clause 6.2.4
TransactionIdentifier	Shall be set to a unique UUID value for this transaction.	M	ETSI TS 103 120 [1], table 6.1
Timestamp	Shall be set to the time the message was sent by the WISP.	M	ETSI TS 103 120 [1], table 6.1
Version	Shall be populated with a version of ETSI TS 103 120 [1] no earlier than V1.19.1. The NationalProfileOwner shall be set to "EU" and the NationalProfileVersion shall be set to the version of the present document.	M	ETSI TS 103 120 [1], clause 6.2.3

The SenderIdentifier and ReceiverIdentifier shall be set as per ETSI TS 103 120 [1], clause 6.2.4.

The Payload of each message shall be set according to details given in the relevant Workflow Endpoint clause below. Each Workflow Endpoint clause sets out the required set of Objects.

## 5.3 Production Workflow Endpoint

### 5.3.1 Description

This endpoint covers the act of serving a European Production Order ("EPOC") using the form defined in Form 1. It provides the initial set of Authorisation, Document and LDTask objects considered in the object model given in Annex A, which between them contain all the information required by the EPOC.

### 5.3.2 Message contents

The contents of the Request shall be as per table 5.3.2-1 below.

**Table 5.3.2-1: HI-1 Objects for the Production Workflow Endpoint**

Verb	HI-1 Object	Cardinality	Description	Reference
CREATE	AuthorisationObject	1	Provides general authorisation information for the EPOC.	Clause 5.3.3
CREATE	LDTaskObject	1..n	Provides technical instructions on what information is required by the EPOC and where to send it.	Clause 5.3.4
CREATE	DocumentObject	1	Carries the signed PDF representation of the EPOC, encoded as per ETSI TS 103 120 [1].	Annex C
CREATE	EncryptionObject	0..n	May be used to provide X.509 certificate(s) to be used for encryption of outcome data.	Clause 5.3.5
CREATE	EPOCAdditionalInfo	0..n	May be used for unmapped information.	Annex B
CREATE	DocumentObject	0..n	May be used for any additional attachments that are sent as part of the message.	Annex B

Unless otherwise specified, each Object other than the AuthorisationObject shall have an association to the AuthorisationObject given in its AssociatedObjects field.

### 5.3.3 AuthorisationObject

The fields in table 5.3.3-1 below shall be present in the CREATE Request for the AuthorisationObject.

**Table 5.3.3-1: Authorisation fields in the Production Workflow Endpoint**

Field	Description	M/C/O	Reference
CountryCode	Shall be set to the appropriate ISO country code for the state of the Issuing Authority, as given in the "Issuing State" field in Form 1 Section A.	M	ETSI TS 103 120 [1], table 7.1
OwnerIdentifier	Shall be set to the appropriate technical identifier for the Issuing Authority given in Form 1 Section A.	M	ETSI TS 103 120 [1], table 7.1
AssociatedObjects	If Form 1 Section D states that the EPOC is related to a previous EPOC or EPOC-PR, and that EPOC or EPOC-PR was received via the WISP, then the Object Identifier for the relevant AuthorisationObject shall be included.	M	ETSI TS 103 120 [1], clause 7.1.4
AuthorisationReference	May be set to any suitable identifier chosen by the WISP that identifies communications related to a particular EPOC or EPOC-PR.	C	ETSI TS 103 120 [1], table 7.1
AuthorisationLegalType	Shall be set using the appropriate value from the EPOCLegalType dictionary (see table 5.3.3-2).	M	Table 5.3.3-2
AuthorisationPriority	Shall be set using the appropriate EPOCPriority DictionaryEntry as specified in table 5.3.3-3.	M	Table 5.3.3-3
AuthorisationDesiredStatus	Shall be set to the AuthorisationDesiredStatus DictionaryEntry "SubmittedToCSP".	M	ETSI TS 103 120 [1], table 7.7
AuthorisationCSPID	Shall be set to the relevant technical identifier for the SP concerned (as determined by either the "service provider concerned" or "addressee" fields of Form 1 Section B).	C	ETSI TS 103 120 [1], table 7.1
AuthorisationApprovalDetails	Shall contain at least information regarding the Issuing Authority (see table 5.3.3-5). May also contain details of the Validating Authority (see table 5.3.3-8) and of the Enforcing Authority (see table 5.3.3-9a) if specified. May also contain details of the "Other Competent Authority" (see table 5.3.3-9a) if specified in any LDTask DeliveryDetails.	M	Table 5.3.3-5, table 5.3.3-8 and table 5.3.3-9a
AuthorisationFlags	If Form 1 Section B specifies that the order is issued in an emergency case, the AuthorisationFlag "IsEmergency" DictionaryEntry shall be included (see ETSI TS 103 120 [1], clause 7.2.12). Other flags shall be included as per table 5.3.3-4.	M	Table 5.3.3-4 and ETSI TS 103 120 [1], clause 7.2.12

Field	Description	M/C/O	Reference
AuthorisationLegalEntity	Shall be set to the Service Provider Concerned, if given in Form 1 Section B. Otherwise shall be set to the Addressee given in Form 1 Section B.	M	ETSI TS 103 120 [1], clause 7.2.15
NationalAuthorisationParameters	Shall contain additional details of the Authorisation associated with an EPOC/EPOC-PR order.	C	Table 5.3.3-10

Table 5.3.3-2: EPOCLegalType Dictionary

Dictionary Owner	Dictionary Name
ETSI	EPOCLegalType
Defined DictionaryEntries	
Value	Meaning
EPOC	The Authorisation is associated with an EPOC.
EPOC-PR	The Authorisation is associated with an EPOC-PR.

Table 5.3.3-3: EPOCPriority Dictionary

Dictionary Owner	Dictionary Name
ETSI	EPOCPriority
Defined DictionaryEntries	
Value	Meaning
TenDaysASAP	Indicates that Form 1 Section C specifies that data is required as soon as possible and within ten days (no notification to enforcing authority).
TenDaysSubjectToEA	Indicates that Form 1 Section C specifies that data is required at the end of ten days if the Enforcing Authority raises no grounds for refusal, or as soon as possible after the Enforcing Authority has confirmed that it will not raise grounds for refusal.
EightHours	Indicates that Form 1 Section C specifies that data is required as soon as possible and within eight hours due to an emergency case.

Table 5.3.3-4: EPOCAuthorisationFlag Dictionary

Dictionary Owner	Dictionary Name
ETSI	EPOCAuthorisationFlag
Defined DictionaryEntries	
Value	Meaning
DelayInformingUser	Indicates that Form 1 Section H specifies that the Issuing Authority will delay informing the person whose data are being requested.
EnforcingAuthorityNotified	Indicates that Form 1 Section K indicates that the Enforcing Authority has been notified of the EPOC.

The Authorisation shall contain an Approval populated as per table 5.3.3-5 using the details from Form 1 Section I.

Table 5.3.3-5: AuthorisationObject ApprovalDetails for Issuing Authority

Field	Description	M/C/O	Reference
ApprovalType	Shall be set to "IssuingAuthority".	M	ETSI TS 103 120 [1], table E.1
ApprovalReference	Shall be set to the value given as "File number" Form 1 Section I, if available.	C	ETSI TS 103 120 [1], table E.1.
ApproverDetails	See table 5.3.3-6.	M	Table 5.3.3-6
ApprovalTimestamp	Shall be set to the date of the signature as given in Form 1 Section I.	M	ETSI TS 103 120 [1], table E.1
ApprovalsEmergency	Shall be set to "True" if Form 1 Section I specifies that the EPOC was issued in a validly established emergency case without prior validation. Shall be set to "False" otherwise.	C	ETSI TS 103 120 [1], table E.1

**Table 5.3.3-6: AuthorisationObject ApproverDetails for Issuing Authority**

Field	Description	M/C/O	Reference
ApproverName	Shall be set to the value given as "Name of authority" in Form 1 Section I.	M	ETSI TS 103 120 [1], table E.2
ApproverRole	Shall be set to "JudgeCourtOrInvestigatingJudge" or "PublicProsecutor" or "OtherCompetentAuthority" as given in Form 1 Section I.	M	ETSI TS 103 120 [1], table E.2
ApproverIdentity	Shall include the relevant technical identifier for the Issuing Authority, if available, according to table 5.3.3-9e.	C	ETSI TS 103 120 [1], table E.2 and table 5.3.3-9e
ApproverContactDetails	Shall contain at least one instance of ApproverContactDetails populated according to table 5.3.3-7. A second instance shall be included if Form 1 Section I provides alternate point-of-contact details.	M	Table 5.3.3-7

**Table 5.3.3-7: AuthorisationObject ApproverContactDetails for Issuing Authority**

Field	Description	M/C/O	Reference
Name	Shall be set to the value given as "Name of its representative" in Form 1 Section I, or "Name of the authority/name" if describing the alternative point of contact.	M	ETSI TS 103 120 [1], clause 7.1.7
Role	Shall be set to the value given as "Post held (title/grade)" in Form 1 Section I, or the literal string "Point of Contact" if describing the alternate point of contact.	C	ETSI TS 103 120 [1], clause 7.1.7
EmailAddress	Shall be set to the value given as the relevant "Email Address" field in Form 1 Section I, if present.	C	ETSI TS 103 120 [1], clause 7.1.7
PhoneNumber	Shall be set to the value given as the relevant "Tel No" field in Form 1 Section I, if present.	C	ETSI TS 103 120 [1], clause 7.1.7
FaxNumber	Shall be set to the value given as the relevant "Fax No" field in Form 1 Section I, if present.	C	ETSI TS 103 120 [1], clause 7.1.7
Address	Shall be set to the value given as the relevant "Address" field in Form 1 Section I, if present.	C	ETSI TS 103 120 [1], clause 7.1.7
Languages	Shall include the language identifiers given in the "Language(s) spoken" field in Form 1 Section I if present or omitted if describing the alternate point of contact.	C	ETSI TS 103 120 [1], clause 7.1.7

If a Validating Authority is specified in Form 1 Section J, the Authorisation shall contain an ApprovalDetails with the fields given in table 5.3.3-8 using details from Form 1 Section J.

**Table 5.3.3-8: AuthorisationObject ApprovalDetails for Validating Authority**

Field	Description	M/C/O	Reference
ApprovalType	Shall be set to "ValidatingAuthority".	M	ETSI TS 103 120 [1], table E.1
ApprovalReference	Shall be set to the value given as "File number" Form 1 Section J, if available.	C	ETSI TS 103 120 [1], table E.1.
ApproverDetails	See table 5.3.3-9.	M	Table 5.3.3-9
ApprovalTimestamp	Shall be set to the date of the signature as given in Form 1 Section J.	M	ETSI TS 103 120 [1], table E.1

**Table 5.3.3-9: AuthorisationObject ApproverDetails for Validating Authority**

Field	Description	M/C/O	Reference
ApproverName	Shall be set to the value given as "Name of the authority" in Form 1 Section J.	M	ETSI TS 103 120 [1], table E.2
ApproverRole	Shall be set to "JudgeCourtOrInvestigatingJudge" or "PublicProsecutor" as given in Form 1 Section J.	M	ETSI TS 103 120 [1], table E.2
ApproverIdentity	Shall include the relevant technical identifier for the Validating Authority, if available, according to table 5.3.3-9e	C	Table 5.3.3-9e
ApproverContactDetails	Shall contain an instance of ApproverContactDetails populated in the same way as table 5.3.3-7.	M	Table 5.3.3-7

If an Enforcing Authority is specified in Form 1 Section K, the AuthorisationObject shall contain an ApprovalDetails with the fields given in table 5.3.3-9a using details from Form 1 Section K.

**Table 5.3.3-9a: AuthorisationObject ApprovalDetails for Enforcing Authority**

Field	Description	M/C/O	Reference
ApprovalType	Shall be set to "EnforcingAuthority".	M	ETSI TS 103 120 [1], table E.1
ApproverDetails	See table 5.3.3-9b.	M	Table 5.3.3-9b

**Table 5.3.3-9b: AuthorisationObject ApproverDetails for Enforcing Authority**

Field	Description	M/C/O	Reference
ApproverName	Shall be set to the value given as "Name of the authority" in Form 1 Section K.	M	ETSI TS 103 120 [1], table E.2
ApproverIdentity	Shall include the relevant technical identifier for the Enforcing Authority, if available, according to table 5.3.3-9e, if available	C	ETSI TS 103 120 [1], table E.2 and table 5.3.3-9e
ApproverContactDetails	Shall contain an instance of ApproverContactDetails populated in the same way as table 5.3.3-7.	M	Table 5.3.3-7

**Table 5.3.3-9c: AuthorisationObject ApprovalDetails for Other Competent Authority**

Field	Description	M/C/O	Reference
ApprovalType	Shall be set to "OtherCompetentAuthority".	M	ETSI TS 103 120 [1], table E.1
ApproverDetails	See table 5.3.3-9d.	M	Table 5.3.3-9d

**Table 5.3.3-9d: AuthorisationObject ApproverDetails for Other Competent Authority**

Field	Description	M/C/O	Reference
ApproverName	Shall be set to the name of the authority.	M	ETSI TS 103 120 [1], table E.2
ApproverIdentity	Shall include the relevant technical identifier for the Other Competent Authority, if available, according to table 5.3.3-9e.	C	Table 5.3.3-9e
ApproverContactDetails	Shall contain an instance of ApproverContactDetails populated in the same way as table 5.3.3-7.	M	Table 5.3.3-7

**Table 5.3.3-9e: EPOCAApproverIdentity**

Field	Description	M/C/O	Reference
CountryCode	Shall be set to "EU".	M	None
ApproverEndpointID	Provides the relevant technical identifier for the party identified by the enclosing ApproverDetails, if available.	C	

**Table 5.3.3-10: EPOCAuthorisationParameters for EPOC/EPOC-PR**

Field	Description	M/C/O	Reference
CountryCode	Shall be set to "EU".	M	None
UnderlyingConditions	Provides information specified in Form 1 Section G or Form 2 Section E, if available.	C	Table 5.3.3-11
RelatedRequests	Provides information specified in Form 1 Section D, if available. Given as a list of RelatedRequests structures.	C	Table 5.3.3-13

**Table 5.3.3-11: UnderlyingConditions**

<b>Field</b>	<b>Description</b>	<b>M/C/O</b>	<b>Reference</b>
UnderlyingConditions	Indicates which underlying conditions have been specified in Form 1 Section G or Form 2 Section E. Given as a list of EPOCUnderlyingCondition DictionaryEntries.	O	Table 5.3.3-12
OffenseClassification	Nature and legal classification of the offence(s) in relation to which the EPOC is issued and the applicable statutory provision indicated in Form 1 (Production) Section G or Form 2 (Preservation) Section.	O	LongString (see ETSI TS 103 280 [2], clause 6.30)
AdditionalUnderlyingCon ditionsInformation	Additional relevant information relating to this EPOC underlying conditions indicated in Form 1 (Production) Section G.	O	LongString (see ETSI TS 103 280 [2], clause 6.30)

Table 5.3.3-12: EPOCUnderlyingCondition Dictionary

Dictionary Owner	Dictionary Name		
ETSI	EPOCUnderlyingCondition		
Defined Dictionary Entries			
Value	Meaning		
CriminalProceedingsOffense	Indicates that Form 1 (Production) Section G or Form 2 (Preservation) Section E specifies that this EPOC/EPOC-PR concerns criminal proceedings in respect of a criminal offence.		
CustodialSentenceAbsconded	Indicates that Form 1 (Production) Section G or Form 2 (Preservation) Section E specifies that this EPOC/EPOC-PR concerns execution of a custodial sentence or a detention order of at least four months following criminal proceedings, imposed by a decision that was not rendered in absentia, in cases where the person convicted absconded from justice.		
CriminalOffense3YearThreshold	Indicates that Form 1 (Production) Section G specifies that this EPOC is issued for traffic data which are not requested for the sole purpose of identifying the user, or for content data, or both, and concerns criminal offence(s) punishable in the issuing State by a custodial sentence of a maximum of at least three years.		
Directive2019_713Offense	Indicates that Form 1 (Production) Section G specifies that this EPOC is issued for traffic data which are not requested for the sole purpose of identifying the user, or for content data, or both, and concerns offenses as defined in Articles 3 to 8 of Directive (EU) 2019/713 [i.5].		
Directive2011_93_EUOffense	Indicates that Form 1 (Production) Section G specifies that this EPOC is issued for traffic data which are not requested for the sole purpose of identifying the user, or for content data, or both, and concerns offenses as defined in Articles 3 to 7 of Directive 2011/93/EU [i.6].		
Directive2013_40_EUOffense	Indicates that Form 1 (Production) Section G specifies that this EPOC is issued for traffic data which are not requested for the sole purpose of identifying the user, or for content data, or both, and concerns offenses as defined in Articles 3 to 8 of Directive 2013/40/EU [i.7].		
Directive2017_541Offense	Indicates that Form 1 (Production) Section G specifies that this EPOC is issued for traffic data which are not requested for the sole purpose of identifying the user, or for content data, or both, and concerns criminal offenses as defined in Articles 3 to 12 and 14 of Directive (EU) 2017/541 [i.8].		
AddressedToController	Indicates that Form 1 (Production) Section G specifies that this EPOC is addressed to the service provider acting as controller.		
AddressedToProcessorControllerUnidentified	Indicates that Form 1 (Production) Section G specifies that this EPOC is addressed to the service provider who is or, in the case of situations where the controller cannot be identified, is possibly processing the data on behalf of the controller, because the controller cannot be identified despite reasonable efforts on the part of the issuing authority.		
AddressedToProcessorDetrimentalToInvestigation	Indicates that Form 1 (Production) Section G specifies that this EPOC is addressed to the service provider who is or, in the case of situations where the controller cannot be identified, is possibly processing the data on behalf of the controller, because addressing the controller might be detrimental to the investigation. If this flag is set, one of ProcessorShallInformController or ProcessorShallNotInformController should be set.		
ProcessorShallInformController	Indicates that Form 1 (Production) Section G specifies that this EPOC being addressed to the service provider processing data on behalf of the controller, the processor shall inform the controller about the data production.		
ProcessorShallNotInformController	Indicates that Form 1 (Production) Section G specifies that this EPOC being addressed to the service provider processing data on behalf of the controller, the processor shall not inform the controller about the data production until further notice, as it would be detrimental to the investigation.		

Table 5.3.3-13: RelatedRequestDetails

Field	Description	M/C/O	Reference
RelatedRequests	Provides information for each related request specified in Form 1 Section D, if available. Given as a list of RelatedRequests structures.	O	None
AdditionalRelatedRequestInformation	Shall contain any information provided in the "other information" field of Form 1 Section D, if provided.	O	None

**Table 5.3.3-14: RelatedRequests**

Field	Description	M/C/O	Reference
RequestInBand	Boolean value that shall be set to true if the related request was sent within the distributed IT system, and false otherwise.	M	None
InstrumentType	Indicates the type of instrument using the appropriate entry from the EPOCLegalType Dictionary (or other appropriate Dictionary), if provided.	O	Table 5.3.3-2
ExternalIdentifier	Given the relevant external identifier for the related request, if provided.	O	None
IssuerDetails	Details related to the issuer of the related request.	O	Table 5.3.3-15
AddresseeDetails	Details related to the addressee of the related request.	O	Table 5.3.3-15
CompetentAuthorityDetails	Details related to the competent authority for the related request.	O	Table 5.3.3-15
IssuedOn	Date that the related request was issued, given as a QualifiedDateTime, if provided.	O	ETSI TS 103 280 [2], clause 6.4
TransmittedOn	Date that the related request was transmitted, given as a QualifiedDateTime, if provided.	O	ETSI TS 103 280 [2], clause 6.4

**Table 5.3.3-15: RelatedRequestPartyInformation**

Field	Description	M/C/O	Reference
TechnicalIdentifier	Technical identifier for the relevant party.	M	None
Name	Name of the relevant party.	O	None
FileNumber	File number associated with the related request within the relevant party, if provided.	O	None

### 5.3.4 LDTask Objects

The Production request shall contain one LDTask Object for each independent identifier given in Form 1 Section E, together with the relevant types of data requested in Form 1 Section F.

The fields given in table 5.3.4-1 shall be present in each CREATE request for each LDTask Object.

**Table 5.3.4-1: LDTaskObject fields in the Production Workflow Endpoint**

Field	Description	M/C/O	Reference
CountryCode	Shall be set to the appropriate ISO country code for the state of the Issuing Authority, as given in the "Issuing State" field in Form 1 Section A.	M	ETSI TS 103 120 [1], table 7.1
OwnerIdentifier	Shall be set to the appropriate technical identifier for the Issuing Authority given in Form 1 Section A.	M	ETSI TS 103 120 [1], table 7.1
AssociatedObjects	Shall be set to include the Object ID of the AuthorisationObject (see clause 5.3.3).	M	ETSI TS 103 120 [1], clause 7.1.4
Reference	Shall be set to an LDID chosen by the Issuing Authority or constructed by the WISP on behalf of the Issuing Authority. The same LDID shall be used for all LDTasks related to the same EPOC.	M	ETSI TS 103 120 [1], clause 8.3.2.
DesiredStatus	Shall be set to LDTaskDesiredStatus value "AwaitingDisclosure".	M	ETSI TS 103 120 [1], table 8.17
RequestDetails	Identifies the requested data and the evidence to be produced (Form 1 Sections E and F).	M	Table 5.3.4-2
DeliveryDetails	The destination of the transfer of data as specified in (Form 1 Section L). The information in the DeliveryDetails shall be the same for all LDTasks related to the same EPOC.	M	Table 5.3.4-4
Deadlines	Shall be included if any procedural or other deadlines are specified in the free-text field in Form 1 Section C, beyond those represented by the Authorisation's Priority flag (see table 5.3.3-3).	C	ETSI TS 103 120 [1] clause 8.3.9

Table 5.3.4-2: LDTaskObject RequestDetails

Field	Description	M/C/O	Reference
Type	Shall be set to the relevant value from the RequestType dictionary in ETSI TS 103 120 [1], clause 8.3.5.2 to match the value given in Form 1 Section E.	M	ETSI TS 103 120 [1], clause 8.3.5.2.
StartTime	Shall be set to the value given as the "time range of the data for which production is requested" in Form 1 Section E, if present.	C	ETSI TS 103 120 [1], clause 8.18
EndTime	Shall be set to the value given as the "time range of the data for which production is requested" in Form 1 Section E, if present.	C	ETSI TS 103 120 [1], clause 8.18
ObservedTimes	If "IP address(es) and timestamps" are specified in Form 1 Section E, this field shall be set to the timestamps given.	C	ETSI TS 103 120 [1], table 8.18
RequestValues	<p>Shall be populated with the appropriate values from Form 1 Section E. For standardized identifier types, the mapping shall be performed as per table 5.3.4-6 below. For Service Provider specified identifier types, the relevant Service Provider Format types may be used.</p> <p>If an SP-provided TargetIdentifierSubtype is not used (i.e. the value in Form 1 is arbitrary free-text) then a singular Format Type called "NameOfService" shall be used, the Owner shall be set to "EPOC".</p> <p>Note that an SP is unlikely to be able to process such arbitrary values reliably, so the use of such values is strongly discouraged.</p> <p>If SP-provided TargetIdentifierSubtype dictionaries cannot be used, it is recommended that the IA can obtain a set of meaningful values from the SP via other means.</p>	M	Table 5.3.4-6
SubType	Shall be populated with each of the relevant values from table 5.3.4-3 for each option selected in Form 1 Section F. For Service Provider specified request subtypes, the relevant Service Provider RequestSubtypes may be used.	M	Table 5.3.4-3
TargetIdentifierSubtype	Shall be set to the value(s) given as "Name(s) of the relevant service(s)" from Form 1 Section E, if present, using the relevant SP-provided dictionary of valid TargetIdentifierSubtypes.	C	ETSI TS 103 120 [1], clause 8.3.5.6
ManualInformation	Shall be set to the value(s) given as "Additional Information if needed" from Form 1 Section E, if present, in addition to any other information required to present following table 5.3.4-3.	C	ETSI TS 103 120 [1] clause 8.3.10

Table 5.3.4-3: EPOCRequestSubtype Dictionary

Dictionary Owner	Dictionary Name
ETSI	EPOCRequestSubtype
Defined DictionaryEntries	
Value	Meaning
UserInformation	Form 1 Section F checkbox labelled "Name, date of birth, postal or geographic address", etc. was checked.
RegistrationInformation	Form 1 Section F checkbox labelled "Date and time of initial registration", etc. was checked.
TypeOfServiceInformation	Form 1 Section F checkbox labelled "Type of service and its duration", etc. was checked.
ProfileInformation	Form 1 Section F checkbox labelled "Profile information", etc. was checked.
DataOnValidationOfUse	Form 1 Section F checkbox labelled "Data on the validation of the use of service", etc. was checked.
DebitOrCreditCardInformation	Form 1 Section F checkbox labelled "Debit or credit card information", etc. was checked.
PUKCodes	Form 1 Section F checkbox labelled "PUK-Codes" was checked.
SubscriberDataOther	Form 1 Section F checkbox labelled "Other" in bullet (a) was checked. If the value provided next to the "other" box can be interpreted as a valid Service Provider supplied RequestSubtype DictionaryEntry, then that DictionaryEntry may be used instead, otherwise the relevant details shall also be provided in the LDTask ManualInformation field.
IPConnectionRecords	Form 1 Section F checkbox labelled "IP connection records such as IP addresses" etc. was checked. If any details are provided in the associated free-text field, these shall be included in the LDTask ManualInformation field.

Dictionary Owner	Dictionary Name
Defined DictionaryEntries	
Value	Meaning
IdentifyingUserOther	Form 1 Section F checkbox labelled "Other" in bullet (b) was checked. If the value provided next to the "other" box can be interpreted as a valid Service Provider supplied RequestSubtype DictionaryEntry, then that DictionaryEntry may be used instead, otherwise the relevant details shall also be provided in the LDTask ManualInformation field.
OutgoingAndIncomingTrafficData	Form 1 Section F checkbox labelled "Outgoing (A) and incoming (B) identifiers", etc. was checked.
TimeAndDurationOfConnections	Form 1 Section F checkbox labelled "Time and duration of connection(s)" was checked.
CallAttempts	Form 1 Section F checkbox labelled "Call Attempt(s)" was checked.
MobileBaseStationID	Form 1 Section F checkbox labelled "Base station ID, including geographical information", etc. under bullet (c) (i) was checked.
BearerUsed	Form 1 Section F checkbox labelled "Bearer / teleservice used (e.g. UMTS, GPRS)" was checked.
TrafficDataMobileOther	Form 1 Section F checkbox labelled "Other" in bullet (c) (i) was checked. If the value provided next to the "other" box can be interpreted as a valid Service Provider supplied RequestSubtype DictionaryEntry, then that DictionaryEntry may be used instead, otherwise the relevant details shall also be provided in the LDTask ManualInformation field.
RoutingInformation	Form 1 Section F checkbox labelled "Routing information (source IP address)", etc. was checked.
InternetBaseStationID	Form 1 Section F checkbox labelled "Base station ID, including geographical information", etc. under bullet (c) (ii) was checked.
VolumeOfData	Form 1 Section F checkbox labelled "Volume of data" was checked.
DateAndTimeOfConnection	Form 1 Section F checkbox labelled "Date and time of connection(s)" was checked.
DurationOfConnection	Form 1 Section F checkbox labelled "Duration of connection or access session(s)" was checked.
TrafficDataInternetOther	Form 1 Section F checkbox labelled "Other" in bullet (c) (ii) was checked. If the value provided next to the "other" box can be interpreted as a valid Service Provider supplied RequestSubtype DictionaryEntry, then that DictionaryEntry may be used instead, otherwise the relevant details shall also be provided in the LDTask ManualInformation field.
Logfiles	Form 1 Section F checkbox labelled "Logfiles" was checked.
Tickets	Form 1 Section F checkbox labelled "Tickets" was checked.
TrafficDataHostingOther	Form 1 Section F checkbox labelled "Other" in bullet (c) (iii) was checked. If the value provided next to the "other" box can be interpreted as a valid Service Provider supplied RequestSubtype DictionaryEntry, then that DictionaryEntry may be used instead, otherwise the relevant details shall also be provided in the LDTask ManualInformation field.
PurchaseHistory	Form 1 Section F checkbox labelled "Purchase History" was checked.
PrepaidBalance	Form 1 Section F checkbox labelled "Prepaid balance charging history" was checked.
TrafficDataOtherOther	Form 1 Section F checkbox labelled "Other" in bullet (c) (iv) was checked. If the value provided next to the "other" box can be interpreted as a valid Service Provider supplied RequestSubtype DictionaryEntry, then that DictionaryEntry may be used instead, otherwise the relevant details shall also be provided in the LDTask ManualInformation field.
MailboxDump	Form 1 Section F checkbox labelled "(web)mailbox dump" was checked.
OnlineStorageDump	Form 1 Section F checkbox labelled "Online storage dump", etc. was checked.
Pagedump	Form 1 Section F checkbox labelled "Pagedump" was checked.
MessageLog	Form 1 Section F checkbox labelled "Message log/backup" was checked.
VoicemailDump	Form 1 Section F checkbox labelled "Voicemail dump" was checked.
ServerContents	Form 1 Section F checkbox labelled "Server contents" was checked.
DeviceBackup	Form 1 Section F checkbox labelled "Device backup" was checked.
ContactList	Form 1 Section F checkbox labelled "Contact list" was checked.
ContentDataOther	Form 1 Section F checkbox labelled "Other" in bullet (d) was checked. If the value provided next to the "other" box can be interpreted as a valid Service Provider supplied RequestSubtype DictionaryEntry, then that DictionaryEntry may be used instead, otherwise the relevant details shall also be provided in the LDTask ManualInformation field.

Dictionary Owner	Dictionary Name
Defined DictionaryEntries	
Value	Meaning
AdditionalRequestTypeInfo	Form 1 Section F checkbox labelled "Additional information in case necessary to (further) specify or limit the range of the requested data" was checked. Any information present in the associated free text field shall be included in the LDTaskObject ManuallInformation field.

Table 5.3.4-4: LDTaskObject DeliveryDestination fields

Field	Description	M/C/O	Reference
DeliveryAddress	Shall be given as an EndpointID, containing the unique identifier of the authority identified in EPOC Form 1 Section L.	C	ETSI TS 103 120 [1], clause 8.2.8.3
HandoverFormat	Set to the appropriate LDHandoverFormat Dictionary entry (see ETSI TS 103 120 [1], table 8.24) if a supported value is given in EPOC Form 1 Section L. Any other value shall be placed in the LDTask ManuallInformation field.	C	ETSI TS 103 120 [1], clause 8.3.6.3
DeliveryProfile	Shall be set with the appropriate EPOCDeliveryProfile Dictionary entry as given in table 5.3.4-5, if a value is given. If more than one destination is specified, a separate LDDeliveryDestination instance shall be given for each destination.	M	Table 5.3.4-5

Table 5.3.4-5: EPOCDeliveryProfile Dictionary

Dictionary Owner	Dictionary Name
Defined DictionaryEntries	
Value	Meaning
ETSI	EPOCDeliveryProfile
IssuingAuthority	The data shall be transferred to the Issuing Authority.
ValidatingAuthority	The data shall be transferred to the Validating Authority.
OtherCompetentAuthority	The data shall be transferred to another competent authority. Any details specified in Form 1 Section L shall be placed in the LDTask ManuallInformation field.

The RequestValues structure shall be populated according to the values given in Form 1 Section E. Table 5.3.4-6 gives the required ETSI TS 103 120 [1], Annex C Format Name to be used in the RequestValues structure for each identifier type in Section E.

Where multiple values are given with the intent that data is sought for each independently (e.g. a list of IP addresses where data for each is sought), each value shall be provided as a separate LDTaskObject. Where multiple values are required to be combined to identify the data sought (e.g. an IP address and a port number), then these values shall be given in the same LDTaskObject.

Any value given in a RequestValue Format that has an associated regular expression in ETSI TS 103 280 [2] shall conform to that regular expression.

Table 5.3.4-6: RequestValue mapping

Form 1 Field	RequestValue Format Value	Notes	ETSI TS 103 280 [2] reference
IP address(es) and timestamps	IPv4Address IPv6Address IPv4CIDR IPv6CIDR Port (as appropriate)	If dates are supplied as part of the IP addresses in Form 1 Section E, these shall be given in the ObservedTimes field (see table 5.3.4-2).	Clause 6.11 or 6.13
Tel No	InternationalE164		Clause 6.6
Email address(es)	EmailAddress or InternationalizedEmailAddress, as appropriate		Clause 6.26 or 6.49
IMEI number(s)	IMEI or IMEISV as appropriate		Clause 6.8 or 6.10
MAC address(es)	MACAddress		Clause 6.25
The user(s) or other unique identifiers	ServiceAccessIdentifier	Use of this field is discouraged in favour of using SP-provided definitions (see below) where available.	Clause 6.58
Other	Other	If the identifier type "Other" is chosen and no Service-Provider-specified FormatName can be determined, the RequestValue Format Name "Other" shall be used (with the Format Owner set to "ETSI"). If a Service-Provider-specified FormatName can be determined, that shall be used instead.	

### 5.3.5 Encryption Objects

The production request may create encryption objects, in order to request encryption of the outcome data. The encryption object is described in ETSI TS 103 120 [1], clause 7.9. The Encryption object shall exclusively use X.509 certificates.

## 5.4 New Deadline Workflow Endpoint

### 5.4.1 Description

This endpoint covers the act of setting a new deadline for compliance with an EPOC.

### 5.4.2 Message contents

The contents of the Request shall be as per table 5.4.2-1 below.

Table 5.4.2-1: HI-1 Objects for the New Deadline Workflow Endpoint

Verb	HI-1 Object	Cardinality	Description	Reference
UPDATE	LDTaskObject	1..n	Resets the deadline for compliance with the original EPOC request for each LDTaskObject for which data is still required.	Clause 5.4.3
CREATE	EPOCAdditionalInfo	0..n	May be used for unmapped information	Annex B
CREATE	DocumentObject	0..n	May be used for any additional attachments that are sent as part of the message.	Annex B

### 5.4.3 LDTaskObject

The Request shall contain an UPDATE Request for each LDTaskObject in the original EPOC (see clause 5.3) for which a new deadline is required.

The fields in table 5.4.3-1 shall be present in each such UPDATE Request.

**Table 5.4.3-1: LDTaskObject fields in the New Deadline Workflow Endpoint**

Field	Description	M/C/O	Reference
Deadline	Shall contain an LDDeadline entry for all deadlines currently applicable to the LDTaskObject, including the one being updated.	M	Table 5.4.3-2

**Table 5.4.3-2: LDDeadline fields in the New Deadline Workflow Endpoint**

Field	Description	M/C/O	Reference
DateTime	Shall be set to a fully qualified date and time of the deadline.	M	ETSI TS 103 120 [1], clause 8.3
NatureOfDeadline	For the new deadline, shall be set to the value "DeadlineForDelivery" from the LDNatureOfDeadline dictionary (see ETSI TS 103 120 [1], table 8.Y) or an appropriate DictionaryEntry value from a Dictionary supplied by the Issuing Authority. For all other deadlines, shall be set to the value originally given (see clause 5.3).	M	ETSI TS 103 120 [1], clause 8.3
OtherInformation	May contain any additional human-readable information related to the deadline.	O	ETSI TS 103 120 [1], clause 8.3

## 5.5 Grounds For Refusal Endpoint

### 5.5.1 Description

This endpoint covers an Enforcing Authority indicating whether it has grounds for refusal or not after reviewing Form 1 (with Section M completed) or after the Enforcing Authority having received a Form 3 from the Service Provider.

### 5.5.2 Message contents

The contents of the Request shall be as per table 5.5.2-1 below.

**Table 5.5.2-1: HI-1 Objects for the Grounds For Refusal Workflow Endpoint**

Verb	HI-1 Object	Cardinality	Description	Reference
CREATE	EPOCNoGroundsForRefusal	0..1	Shall be included if the Enforcing Authority has no grounds for refusal.	Clause 5.5.4
CREATE	EPOCFullRefusalInformation	0..1	Shall be included if the Enforcing Authority is issuing a full refusal.	Clause 5.5.5
CREATE	EPOCPartialRefusalInformation	0..n	Shall be included if the Enforcing Authority is issuing a partial refusal regarding a specific identifier; a separate PartialRefusalInformation object shall be included for each such identifier.	Clause 5.5.6
UPDATE	LDTaskObject	0..n	Shall be included for each identifier for which a partial refusal is being raised.	Clause 5.5.7
CREATE	EPOCAdditionalInfo	0..n	May be used for unmapped information.	Annex B
CREATE	DocumentObject	0..n	May be used for any additional attachments that are sent as part of the message, including any signed Grounds For Refusal PDF document produced by the Enforcing Authority.	Clause 5.5.3 and Annex B

All Objects included in the Request shall have fields set according to table 5.5.2-2 below, except for LDTaskObjects (see clause 5.5.7).

**Table 5.5.2-2: Object fields for Grounds For Refusal Workflow Endpoint**

Field	Description	M/C/O	Reference
CountryCode	Shall be set to the appropriate ISO country code for the state of the Enforcing Authority.	M	ETSI TS 103 120 [1], table 7.1
OwnerIdentifier	Shall be set to the appropriate technical identifier for the Enforcing Authority.	M	ETSI TS 103 120 [1], table 7.1
AssociatedObjects	Shall be set to include the Object ID of the original AuthorisationObject (see clause 5.3.3).	M	ETSI TS 103 120 [1], clause 7.1.4

### 5.5.3 Document Object

The request may contain additional attachments, as per clause B.3.

### 5.5.4 EPOCNoGroundsForRefusal Object

If the Enforcing Authority has no grounds for refusal or special conditions have been applied to the Issuing Authority, the Request shall contain a CREATE Request for a EPOCNoGroundsForRefusal object as described in table 5.5.4-1.

**Table 5.5.4-1: RefusalInformation**

Field	Description	M/C/O	Reference
SpecialConditionsApplied	Shall be set to true if special conditions have been applied by the EA. Shall be set to false or omitted in all other circumstances.	C	None
OtherInformation	Provides any other free-text information related to the decision.	C	None

### 5.5.5 EPOCFullRefusalInformation Object

If the Enforcing Authority has grounds for a full refusal, the Request shall contain a CREATE Request for a EPOCFullRefusal object as described in table 5.5.5-1.

**Table 5.5.5-1: EPOCFullRefusal**

Field	Description	M/C/O	Reference
FullRefusalInformation	Provides information on the grounds for full refusal.	M	Table 5.5.5-2

**Table 5.5.5-2: RefusalInformation**

Field	Description	M/C/O	Reference
Ground	Provides a list of grounds for refusal, each given as an EPOCRefusalGrounds DictionaryEntry.	C	Table 5.5.5-3
Explanation	Provides a free-text explanation for the refusal.	C	None
OtherInformation	Provides any other free-text information related to the refusal.	C	None

**Table 5.5.5-3: EPOCRefusalGrounds Dictionary**

Dictionary Owner	Dictionary Name
ETSI	EPOCRefusalType
<b>Defined DictionaryEntries</b>	
Value	Meaning
DataProtectedByImmunities	Refusal relates to the fact that the data is protected by immunities.
FundamentalRights	Refusal relates to fundamental rights.
NeBisInIdem	Refusal relates to <i>ne bis in idem</i> .
NotAnOffenceUnderLawOfEnforcingState	Refusal relates to the fact that the offence given is not an offence under the law of the enforcing state.

## 5.5.6 EPOCPartialRefusalInformation Object

If the Enforcing Authority is raising partial grounds for refusal, the Request shall contain a CREATE Request for a EPOCPartialRefusalInformation object as described in table 5.5.6-1 for each identifier against which grounds for refusal are being raised.

Each EPOCPartialRefusalInformation object shall contain a reference to the relevant LDTaskObject for which the grounds for refusal are being raised in the AssociatedObjects field (see ETSI TS 103 120 [1], clause 7.1.4). An UPDATE for this LDTaskObject shall also be given in the same request (see clause 5.5.7).

**Table 5.5.6-1: EPOCPartialRefusalInformation**

Field	Description	M/C/O	Reference
Decision	Provides information on whether the refusal for this identifier is full or only related to specific categories of data.	M	Table 5.5.6-2
OtherInformation	Provides any other free-text information related to the refusal.	C	None

**Table 5.5.6-2: IdentifierRefusalDecision (choice)**

Field	Description	Reference
FullRefusal	Data for all categories is refused. Further information is given in a SpecificDataRefusal structure.	Table 5.5.6-3
CategoriesRefusal	Refusal is confined to specific categories. Further information is given in a CategoriesRefusal structure.	Table 5.5.6-4

**Table 5.5.6-3: SpecificDataRefusal**

Field	Description	M/C/O	Reference
RefusalInformation	Provides information on why the refusal has been raised. Provided using the RefusalInformation structure.	M	Table 5.5.5-2
Data	Free-text description specifying what data is refused under the grounds for refusal.	C	None
RefusedTimespan	Start and end of a time range for which data has been refused under the grounds for refusal.	C	None

**Table 5.5.6-4: CategoriesRefusal**

Field	Description	M/C/O	Reference
SubscriberData	Refusal related to subscriber data. Further information is given in the CategoryRefusalInformation structure.	C	Table 5.5.6-5
UserIdentification	Refusal related to user identification. Further information is given in the CategoryRefusalInformation structure.	C	Table 5.5.6-5
TrafficData	Refusal related to traffic data. Further information is given in the CategoryRefusalInformation structure.	C	Table 5.5.6-5
ContentData	Refusal related to stored content data. Further information is given in the CategoryRefusalInformation structure.	C	Table 5.5.6-5

**Table 5.5.6-5: CategoryRefusal**

Field	Description	M/C/O	Reference
Refusal	Information related to the refusal. Given as a SpecificDataRefusal structure.	C	Table 5.5.6-3
FullRefusal	Indicates that the refusal covers all data within this category.	C	None
PartialRefusal	Indicates that the refusal covers only certain categories of data within this category. The relevant categories are supplied as a list of EPOCRequestSubtype DictionaryEntries (see table 5.3.4-3).	C	Table 5.3.4-3

## 5.5.7 LDTask Objects

The Request shall contain an UPDATE for each LDTaskObject for which an EPOCPartialRefusalInformation has been created (see clause 5.5.6).

Only the fields given in table 5.5.7-1 shall be present in each UPDATE request for each LDTask Object.

**Table 5.5.7-1: LDTaskObject fields in the Grounds For Refusal Endpoint**

Field	Description	M/C/O	Reference
DesiredStatus	If all data for this identifier is refused, this value shall be set to the value "Rejected" from the LDTaskDesiredStatus Dictionary.	C	ETSI TS 103 120 [1], clause 8.3.4
RequestDetails	Shall be set if the partial refusal for this identifier consists solely of removing categories of data. Shall be absent otherwise.	C	Table 5.5.7-2
Flags	Shall be set to include the "PartialRefusalManualHandlingRequired" value from the EPOCLDTaskFlag Dictionary if the WISP cannot be certain that either of the conditions for setting the fields above (DesiredStatus and RequestDetails) are met. Implementers should take care to ensure that any previous flag values are included, as per the UPDATE list semantics given in ETSI TS 103 120 [1], clause 6.4.7.	C	Table 5.5.7-3

**Table 5.5.7-2: LDTaskObject RequestDetails**

Field	Description	M/C/O	Reference
Type	Shall be set to the appropriate Type for the remaining categories of data that are allowed to be disclosed.	M	Table 5.3.4-2
SubType	Shall be set to the appropriate value to reflect the remaining subcategories that are allowed to be disclosed.	M	Table 5.3.4-3

**Table 5.5.7-3: EPOCLDTaskFlag Dictionary**

Dictionary Owner	Dictionary Name
ETSI	EPOCLDTaskFlag
Defined DictionaryEntries	
Value	Meaning
PartialRefusalManualHandlingRequired	The partial refusal conditions for this identifier cannot be expressed in machine-processable terms, and manual intervention is required.

## 5.6 Withdraw Workflow Endpoint

### 5.6.1 Description

This endpoint covers an Issuing Authority indicating that an EPOC or EPOC-PR has been withdrawn. This is distinct from indicating that an EPOC-PR is no longer required (see clause 5.10).

### 5.6.2 Message contents

The contents of the Request shall be as per table 5.6.2-1 below.

**Table 5.6.2-1: HI-1 Objects for the Withdraw Workflow Endpoint**

Verb	HI-1 Object	Cardinality	Description	Reference
UPDATE	Authorisation	1	Indicates that the EPOC is no longer required.	Clause 5.6.3
CREATE	EPOCAdditionalInfo	0..n	May be used for unmapped information.	Annex B
CREATE	DocumentObject	0..n	May be used for any additional attachments that are sent as part of the message.	Annex B

### 5.6.3 AuthorisationObject

The Request shall contain an UPDATE Request for the AuthorisationObject originally supplied in the Production request (see clause 5.3).

The fields in table 5.6.3-1 shall be present in each such UPDATE Request.

**Table 5.6.3-1: AuthorisationObject fields in the Withdraw Workflow Endpoint**

Field	Description	M/C/O	Reference
DesiredStatus	Shall be set to the AuthorisationDesiredStatus DictionaryEntry "Cancelled".	M	ETSI TS 103 120 [1], table 7.7

If the operation is successful, then the Service Provider shall consider all LDTaskObjects or LPTaskObjects associated with the Authorisation to be cancelled too.

## 5.7 Preservation Workflow Endpoint

### 5.7.1 Description

This endpoint covers the act of serving a European Preservation Order ("EPOC-PR") using the form defined in the Form 2. It provides the initial set of Authorisation, Document and LDTask objects considered in the object model given in Annex A, which between them contain all the information required by the EPOC.

### 5.7.2 Message contents

The contents of the Request shall be as per table 5.7.2-1 below.

**Table 5.7.2-1: HI-1 Objects for the Preservation Workflow Endpoint**

Verb	HI-1 Object	Cardinality	Description	Reference
CREATE	AuthorisationObject	1	Provides general authorisation information for the EPOC-PR.	Clause 5.7.3
CREATE	LPTaskObject	1..n	Provides technical instructions on what information is required to be preserved by the EPOC-PR.	Clause 5.7.4
CREATE	DocumentObject	1	Carries the signed PDF representation of the EPOCPR.	Annex C
CREATE	EPOCAdditionalInfo	0..n	May be used for unmapped information.	Annex B
CREATE	DocumentObject	0..n	May be used for any additional attachments that are sent as part of the message.	Annex B

Unless otherwise specified, each Object other than the AuthorisationObject shall have an association to the AuthorisationObject given in its AssociatedObjects field.

### 5.7.3 AuthorisationObject

The fields given in table 5.7.3-1 shall be present in the CREATE Request for the AuthorisationObject.

**Table 5.7.3-1: Authorisation fields in the Preservation Workflow Endpoint**

Field	Description	M/C/O	Reference
CountryCode	Shall be set to the appropriate ISO country code for the state of the Issuing Authority, as given in the "Issuing State" field in Form 2 Section A.	M	ETSI TS 103 120 [1], table 7.1
OwnerIdentifier	Shall be set to the appropriate technical identifier for the Issuing Authority given in Form 2 Section A.	M	ETSI TS 103 120 [1], table 7.1
AuthorisationReference	May be set to any suitable identifier chosen by the WISP that identifies communications related to a particular EPOC or EPOC-PR.	C	ETSI TS 103 120 [1], table 7.1
AuthorisationLegalType	Shall be set using the appropriate value from the EPOCLegalType dictionary (see table 5.3.3-2).	M	Table 5.3.3-2
AuthorisationDesiredStatus	Shall be set to the AuthorisationDesiredStatus DictionaryEntry "SubmittedToCSP".	M	ETSI TS 103 120 [1], table 7.7
AuthorisationCSPID	Shall be set to the relevant technical identifier for the SP concerned (as determined by either the "service provider concerned" or "addressee" fields of Form 1 Section B).	C	ETSI TS 103 120 [1], table 7.1
AuthorisationApprovalDetails	Shall contain information regarding the Issuing Authority (see table 5.7.3-2). May also contain details of the Validating Authority (see table 5.7.3-5) if specified.	M	Table 5.7.3-2 and table 5.7.3-5
AuthorisationFlags	If Form 2 Section B specifies that the order is issued in an emergency case, the AuthorisationFlag "IsEmergency" DictionaryEntry shall be included (see ETSI TS 103 120 [1], clause 7.2.12).	M	ETSI TS 103 120 [1], clause 7.2.12
AuthorisationLegalEntity	Shall be set to the Service Provider Concerned, if given in Form 2 Section B. Otherwise shall be set to the Addressee given in Form 2 Section B.	M	ETSI TS 103 120 [1], clause 7.2.15
NationalAuthorisationParameters	Shall contain additional details of the Authorisation associated with an EPOC/EPOC-PR order.	C	Table 5.3.3-10

The Authorisation shall contain an Approval with the fields given in table 5.7.3-2 using the details from Form 1 Section F.

**Table 5.7.3-2: AuthorisationObject ApprovalDetails for Issuing Authority**

Field	Description	M/C/O	Reference
ApprovalType	Shall be set to "IssuingAuthority".	M	ETSI TS 103 120 [1], table E.1
ApprovalReference	Shall be set to the value given as "File number" Form 2 Section F if available.	M	ETSI TS 103 120 [1], table E.1
ApproverDetails	See table 5.7.3-3.	M	Table 5.7.3-3
ApprovalTimestamp	Shall be set to the date of the signature as given in Form 2 Section F.	M	ETSI TS 103 120 [1], table E.1
ApprovalsEmergency	Shall be set to "True" if Form 2 Section F specifies that the EPOC was issued in a validly established emergency case without prior validation. Shall be set to "False" otherwise.	C	ETSI TS 103 120 [1], table E.1

**Table 5.7.3-3: AuthorisationObject ApproverDetails for Issuing Authority**

Field	Description	M/C/O	Reference
ApproverName	Shall be set to the value given as "Name of authority" in Form 2 Section F.	M	ETSI TS 103 120 [1], table E.2
ApprovalRole	Shall be set to "JudgeCourtOrInvestigatingJudge" or "PublicProsecutor" or "OtherCompetentAuthority" as given in Form 2 Section F.	M	ETSI TS 103 120 [1], table E.2
ApproverContactDetails	Shall contain at least one instance of ApproverContactDetails populated according to table 5.7.3-4. A second instance shall be included if Form 2 Section F provides alternate point-of-contact details.	M	Table 5.7.3-4

**Table 5.7.3-4: AuthorisationObject ApproverContactDetails for Issuing Authority**

Field	Description	M/C/O	Reference
Name	Shall be set to the value given as "Name of its representative" in Form 2 Section F, or "Name of the authority/name" if describing the alternative point of contact.	M	ETSI TS 103 120 [1], clause 7.1.7
Role	Shall be set to the value given as "Post held (title/grade)" in Form 2 Section F, or the literal string "Point of Contact" if describing the alternate point of contact.	C	ETSI TS 103 120 [1], clause 7.1.7
EmailAddress	Shall be set to the value given as the relevant "Email Address" field in Form 2 Section F, if present.	C	ETSI TS 103 120 [1], clause 7.1.7
PhoneNumber	Shall be set to the value given as the relevant "Tel No" field in Form 2 Section F, if present.	C	ETSI TS 103 120 [1], clause 7.1.7
FaxNumber	Shall be set to the value given as the relevant "Fax No" field in Form 2 Section F, if present.	C	ETSI TS 103 120 [1], clause 7.1.7
Address	Shall be set to the value given as the relevant "Address" field in Form 2 Section F, if present.	C	ETSI TS 103 120 [1], clause 7.1.7
Languages	Shall include the language identifiers given in the "Language(s) spoken" field in Form 2 Section F if present or omitted if describing the alternate point of contact.	C	ETSI TS 103 120 [1], clause 7.1.7

If a Validating Authority is specified in Form 2 Section G, the Authorisation shall contain an ApprovalDetails with the fields in table 5.7.3-5 using the details from Form 2 Section G.

**Table 5.7.3-5: AuthorisationObject ApprovalDetails for Validating Authority**

Field	Description	M/C/O	Reference
ApprovalType	Shall be set to "ValidatingAuthority".	M	ETSI TS 103 120 [1], table E.1
ApprovalReference	Shall be set to the value given as "File number" Form 2 Section G if available.	M	ETSI TS 103 120 [1], table E.1.
ApproverDetails	See table 5.7.3-6.	M	Table 5.7.3-6
ApprovalTimestamp	Shall be set to the date of the signature as given in Form 2 Section G.	M	ETSI TS 103 120 [1], table E.1

**Table 5.7.3-6: AuthorisationObject ApproverDetails for Validating Authority**

Field	Description	M/C/O	Reference
ApproverName	Shall be set to the value given as "Name of the authority" in Form 2 Section F.	M	ETSI TS 103 120 [1], table E.2
ApprovalRole	Shall be set to "JudgeCourtOrInvestigatingJudge" or "PublicProsecutor" as given in Form 2 Section F.	M	ETSI TS 103 120 [1], table E.2
ApproverContactDetails	Shall contain an instance of ApproverContactDetails populated in the same way as table 5.7.3-4.	M	Table 5.7.3-4

## 5.7.4 LPTask Objects

The Preservation request shall contain one LPTask Object for each independent identifier or set of identifiers given in Form 1 Section C.

The fields given in table 5.7.4-1 shall be present in each CREATE request for each LPTask Object.

**Table 5.7.4-1: LPTaskObject fields in the Preservation Workflow Endpoint**

Field	Description	M/C/O	Reference
CountryCode	Shall be set to the appropriate ISO country code for the state of the Issuing Authority, as given in the "Issuing State" field in Form 2 Section A.	M	ETSI TS 103 120 [1], table 7.1
OwnerIdentifier	Shall be set to the appropriate technical identifier for the Issuing Authority given in Form 2 Section A.	M	ETSI TS 103 120 [1], table 7.1
AssociatedObjects	Shall be set to include the Object ID of the AuthorisationObject (see clause 5.7.3).	M	ETSI TS 103 120 [1], clause 7.1.4
DesiredStatus	Shall be set to LPTaskDesiredStatus value "AwaitingPreservation".	M	ETSI TS 103 120 [1], table 8.29
RequestDetails	Identifies the requested data and the evidence to be produced (Form 2 Sections C and D). This shall be populated as per LPTask RequestDetails (see clause 5.3.4) but using the information Form 2 Sections C and D in place of Form 1 Sections E and F as appropriate.	M	Table 5.3.4-2
DesiredPreservationExpiration	Shall be set to the appropriate expiry time for the preservation according to the Regulation [i.1].	M	Table 5.3.4-4

## 5.8 Subsequent Production Workflow Endpoint

### 5.8.1 Description

This endpoint covers the act of serving a confirmation that a request for production has been issued subsequent to an EPOC-PR, using Form 5. It provides the signed PDF version of Form 5 and updates an existing LPTaskObject to reflect the fact that the data should be preserved until the production request has been completed.

### 5.8.2 Message contents

The contents of the Request shall be as per table 5.8.2-1 below.

**Table 5.8.2-1: HI-1 Objects for the Subsequent Production Workflow Endpoint**

Verb	HI-1 Object	Cardinality	Description	Reference
UPDATE	LPTaskObject	1..n	Provides technical instructions on what information is required to be preserved by the EPOC-PR.	Clause 5.8.3
CREATE	DocumentObject	1	Carries the signed PDF representation of Form 5.	Annex C
CREATE	EPOCAdditionalInfo	0..n	May be used for unmapped information.	Annex B
CREATE	DocumentObject	0..n	May be used for any additional attachments that are sent as part of the message.	Annex B

### 5.8.3 LPTask Object

The Request shall contain an UPDATE Request for each LPTaskObject in the original EPOC-PR (see clause 5.3) for which a subsequent production request has been issued under Form 5.

The fields given in table 5.8.3-1 shall be present in each such UPDATE Request.

**Table 5.8.3-1: LPTaskObject fields in the Subsequent Production Workflow Endpoint**

Field	Description	M/C/O	Reference
DesiredStatus	Shall be set to the EPOCPRPreservationStatus DictionaryEntry "SubsequentProductionRequested".	M	Table 5.8.3-2 and ETSI TS 103 120 [1], table 8.27.

**Table 5.8.3-2: EPOCPRPreservationStatus Dictionary**

Dictionary Owner	Dictionary Name
ETSI	EPOCPRPreservationStatus
Defined Dictionary Entries	
Value	Meaning
SubsequentProductionRequested	Indicates that a subsequent production request has been issued against the data covered by the LPTaskObject, and as such the data should not be removed until the production request has been completed, regardless of the value of the PreservationExpiration field.

## 5.9 Preservation Extension Workflow Endpoint

### 5.9.1 Description

This endpoint covers the act of extending the preservation period of an existing EPOC-PR for an additional 30 days, using Form 6. It provides the signed PDF version of Form 6.

### 5.9.2 Message contents

The contents of the Request shall be as per table 5.9.2-1 below.

**Table 5.9.2-1: HI-1 Objects for the Preservation Extension Workflow Endpoint**

Verb	HI-1 Object	Cardinality	Description	Reference
UPDATE	LPTaskObject	1..n	Extends the expiry time of each set of data preserved under the original EPOC-PR by 30 days.	Clause 5.9.3
CREATE	DocumentObject	1	Carries the signed PDF representation of Form 6.	Annex C
CREATE	EPOCAdditionalInfo	0..n	May be used for unmapped information.	Annex B
CREATE	DocumentObject	0..n	May be used for any additional attachments that are sent as part of the message.	Annex B

### 5.9.3 LPTask Object

The Request shall contain an UPDATE Request for each LPTaskObject in the original EPOC-PR (see clause 5.3) for which a subsequent production request has been issued under Form 5.

The fields given in table 5.9.3-1 shall be present in each such UPDATE Request.

**Table 5.9.3-1: LPTaskObject fields in the Preservation Extension Workflow Endpoint**

Field	Description	M/C/O	Reference
DesiredPreservationExpiration	Shall be set to the original PreservationExpiry value plus thirty days as per the Regulation [i.1].	M	ETSI TS 103 120 [1], table 8.27.

## 5.10 End Preservation Workflow Endpoint

### 5.10.1 Description

This endpoint covers an Issuing Authority indicating that preservation of data under an EPOC-PR is no longer required.

### 5.10.2 Message contents

The contents of the Request shall be as per table 5.10.2-1 below.

**Table 5.10.2-1: HI-1 Objects for the Preservation Not Needed Workflow Endpoint**

Verb	HI-1 Object	Cardinality	Description	Reference
UPDATE	LPTaskObject	1..n	Indicates that the EPOC-PR is no longer required.	Clause 5.10.3
CREATE	EPOCAdditionalInfo	0..n	May be used for unmapped information.	Annex B
CREATE	DocumentObject	0..n	May be used for any additional attachments that are sent as part of the message.	Annex B

### 5.10.3 LPTaskObjects

The Request shall contain an UPDATE Request for each of the LPTaskObjects originally supplied in the Preservation request (see clause 5.4).

The fields given in table 5.10.3-1 shall be present in each such UPDATE Request.

**Table 5.10.3-1: LPTaskObjects fields in the Preservation Not Needed Workflow Endpoint**

Field	Description	M/C/O	Reference
DesiredStatus	Shall be set to the LPTaskDesiredStatus DictionaryEntry "Cancelled".	M	ETSI TS 103 120 [1], table 8.29

## 5.11 Delivery Status Workflow Endpoint

### 5.11.1 Description

This endpoint covers indicating to the Service Provider that a previously-sent message has either been successfully delivered to an end recipient, or that such a delivery has failed.

### 5.11.2 Message Contents

The contents of the Request shall be as per table 5.11.2-1 below.

**Table 5.11.2-1: HI-1 Objects for the Delivery Status Workflow Endpoint**

Verb	HI-1 Object	Cardinality	Description	Reference
UPDATE	DeliveryObject	1..n	Indicates that a Delivery Object previously issued by the Service Provider containing the outcome of a production order (see clause 6.3) has either been successfully received by the end recipient, or that delivery has failed.	Clause 5.11.3

### 5.11.3 DeliveryObjects

The Request shall contain an UPDATE Request for each of the DeliveryObjects issued by the Service Provider (see clause 6.3) for which the WISP wishes to provide a delivery notification.

The fields given in table 5.11.3-1 shall be present in each UPDATE Request.

**Table 5.11.3-1: DeliveryObject fields in the Delivery Status Workflow Endpoint**

Field	Description	M/C/O	Reference
DeliveryDesiredStatus	Shall contain a value from the DeliveryDesiredStatus Dictionary (see ETSI TS 103 120 [1], table 10.9). The value shall be set to "Received" if the data has been confirmed as being received by the end recipient. The value shall be set to "Error" if the WISP is aware that the delivery has failed and will not complete.	M	ETSI TS 103 120 [1], clause 10.2.5

## 5.12 Correspondence Workflow Endpoint

### 5.12.1 Description

This endpoint is used by the Issuing Authority or Enforcing Authority to exchange free-text correspondence and associated documentation with the Service Provider, for one of the following purposes:

- To notify the Service Provider that Issuing Authority, disagreeing with the reasons given in Form 3, is upholding the EPOC and intends to proceed to court.
- To notify the Service Provider that the Issuing Authority wishes to maintain the initial request upon receipt of Form 3, where reasons for non-execution of the request are explained by the Service Provider, or after discussion with the notified Enforcing Authority.
- To request additional information from the Service Provider.
- To provide additional information to the Service Provider in response to a query.
- To communicate a decision of the Enforcing Authority after receiving an objection from the Service Provider.
- To notify the Service Provider that the Issuing Authority has initiated enforcement procedures to comply with an EPOC or EPOC-PR.
- To communicate a decision of the Enforcing Authority to either uphold or not to recognize an order upon the initiation of enforcement procedures by the Issuing Authority.

### 5.12.2 Message contents

The contents of the Request shall be as per table 5.12.2-1 below.

**Table 5.12.2-1: HI-1 Objects for the Correspondence Workflow Endpoint**

Verb	HI-1 Object	Cardinality	Description	Reference
CREATE	DocumentObject	1	Document containing the correspondence.	Clause 5.12.3
CREATE	EPOCAdditionalInfo	0..n	May be used for unmapped information.	Annex B
CREATE	DocumentObject	0..n	May be used for any additional attachments that are sent as part of the message.	Annex B

### 5.12.3 DocumentObject

The Request shall contain at least one CREATE Request for a Document Object that represents the correspondence, which shall contain the fields given in table 5.12.3-1.

**Table 5.12.3-1: DocumentObject fields in the Correspondence Workflow Endpoint**

Field	Description	M/C/O	Reference
CountryCode	Shall be set to the appropriate ISO country code for source of the correspondence.	M	ETSI TS 103 120 [1], table 7.1
OwnerIdentifier	Shall be set to the appropriate technical identifier for the source of the correspondence.	M	ETSI TS 103 120 [1], table 7.1
AssociatedObjects	Shall include the Object ID of the original AuthorisationObject created with either the Production Workflow Endpoint (see clause 5.3) or Preservation Workflow Endpoint (see clause 5.7). If this correspondence is in response to a prior one (e.g. providing additional information in relation to a request for information), then the Object ID of that prior correspondence shall also be included.	M	ETSI TS 103 120 [1], clause 7.1.4
DocumentName	Shall be set to "Correspondence".	M	ETSI TS 103 120 [1], clause 7.3.3
DocumentType	Shall be set to the relevant value from the EPOCDocumentType dictionary.	M	Table 5.12.3-2
DocumentProperties	If the DocumentType "RequestAdditionalInformation" is chosen, and a response is required by a particular deadline, then this field shall contain a property with a PropertyType of "ResponseRequiredBy" from the "EPOCDocumentPropertyType" dictionary (see table 5.12.3-3), and a date-time given as a string matching the format required by a QualifiedDateTime (see ETSI TS 103 280 [2], clause 6.4).	C	Table 5.12.3-3 and ETSI TS 103 120 [1], clause 7.3.8
DocumentBody	Contains a binary document containing supporting information, along with relevant metadata according to ETSI TS 103 120 [1], clause 7.3.9. Shall be populated if the chosen DocumentType is "RequestAdditionalInformation" or "ProvideAdditionalInformation", and may be provided in all other circumstances.	C	ETSI TS 103 120 [1], clause 7.3.9

**Table 5.12.3-2: EPOCDocumentType Dictionary (partial)**

Dictionary Owner	Dictionary Name
ETSI	EPOCDocumentType
Defined DictionaryEntries	
Value	Meaning
ProceedingToCourt	The Issuing Authority, disagreeing with the reasons given in Form 3, is upholding the EPOC and intends to proceed to court.
Maintain	The Issuing Authority wishes to maintain the initial request upon receipt of Form 3, where reasons for non-execution of the request are explained by the Service Provider, or after discussion with the notified Enforcing Authority.
RequestAdditionalInformation	Additional information is requested from the Service Provider.
ProvideAdditionalInformation	Additional information is provided to the Service Provider.
EnforcingAuthorityAgreesWithObjection	A decision of the Enforcing Authority after receiving an objection from the Service Provider.
EnforcingAuthorityDisagreesWithObjection	A decision of the Enforcing Authority after receiving an objection from the Service Provider.
EnforcementProceduresInitiated	The Issuing Authority has initiated enforcement procedures to comply with an EPOC or EPOC-PR.
EnforcingAuthorityRecognisesOrder	Used to indicate that the Enforcing Authority has decided to recognize an order as part of enforcement procedures and requiring the Service Provider to comply.
EnforcingAuthorityDoesNotRecogniseOrder	A decision of the Enforcing Authority not to recognize the order upon the initiation of enforcement procedures by the Issuing Authority.

**Table 5.12.3-3: EPOCDocumentProperties Dictionary**

Dictionary Owner	Dictionary Name
ETSI	EPOCDocumentProperties
Defined DictionaryEntries	
Value	Meaning
ResponseRequiredBy	A response to the correspondence is required by a specific date/time.

## 5.13 NonExecution Status Workflow Endpoint

### 5.13.1 Description

This endpoint covers indicating to the Service Provider that a previously-sent NonExecution message has either been successfully transferred to an end recipient, or that such a transmission has failed.

### 5.13.2 Message Contents

The contents of the Request shall be as per table 5.13.2-1 below.

**Table 5.13.2-1: HI-1 Objects for the NonExecution Status Workflow Endpoint**

Verb	HI-1 Object	Cardinality	Description	Reference
UPDATE	DocumentObject	1	Indicates that a Document Object previously issued by the Service Provider containing the nonExecution of a production order (see clause 5.13.3) has either been successfully received by the end recipient, or that the delivery has failed.	Clause 5.13.3

### 5.13.3 DocumentObject

The Request shall contain an UPDATE Request for the DocumentObject issued by the Service Provider (see clause 6.4).

The fields given in table 5.13.3-1 shall be present in each UPDATE Request.

**Table 5.13.3-1: DocumentObject fields in the NonExecution Status Workflow Endpoint**

Field	Description	M/C/O	Reference
DocumentDesiredStatus	Shall contain a value from the EPOCDocumentDesiredStatus Dictionary). The value shall be set to "Received" if the data has been confirmed as being received by the end recipient. The value shall be set to "Error" if the WISP is aware that the transmission has failed and will not be completed.	M	Table 5.13.3-2

**Table 5.13.3-2: EPOCDocumentDesiredStatus Dictionary**

Dictionary Owner	Dictionary Name
ETSI	EPOCDocumentDesiredStatus
Defined DictionaryEntries	
Value	Meaning
Received	The DocumentObject has been received.
Error	The DocumentObject had an error whilst handling.

## 6 WISP Workflow Endpoints

### 6.1 Defined endpoints

This Workflow Profile defines the following operations at the WISP, each of which is exposed as a Workflow Endpoint (see ETSI TS 103 120 [1], clause H.3.1) with a default relative URL path in table 6.1-1.

**Table 6.1-1: WISP Workflow Profile Endpoints**

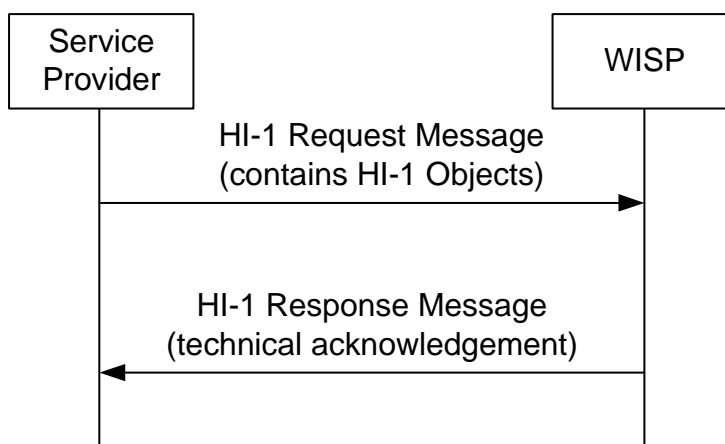
Relative URL path	Description	Clause
/eevidence/outcome	Allows the Service Provider to send the requested data to the respective authority in the issuing State. In case of large file sizes, only the manifest is sent, indicating how to download the requested data outside of the decentralized IT system.	Clause 6.3
/eevidence/nonexecution	Information on the Impossibility of Executing an EPOC / EPOC-PR (Form 3).	Clause 6.4
/eevidence/datapreserved	Confirmation of Issuance of a Request for Production Following a European Preservation Order (Form 5).	Clause 6.5
/eevidence/correspondence	Used by the Service Provider to exchange free-text correspondence with the Issuing Authority or Enforcing Authority, along with associated documentation, for any of the following purposes: <ul style="list-style-type: none"> <li>To request additional information from the relevant Authority.</li> <li>To provide information to the relevant Authority.</li> </ul>	Clause 6.6
/eevidence/confirmwithdrawal	Confirmation of Withdrawal.	Clause 6.7
/eevidence/enforcingauthorityId	Allows the Service Provider to retrieve the identifier of the Enforcing Authority it is associated with.	Clause 6.8
/eevidence/authorities	Allows the Service Provider to query information about existing authorities registered in the DIS.	Clause 6.9

The URL path is specified relative to the API base URL. Usage of the relative URL path is the default for the endpoint but is not required; different URL paths may be provided by mutual agreement.

## 6.2 Common procedures and constraints

### 6.2.1 Message exchange

Each invocation of a WISP Workflow Endpoint shall consist of one HI-1 message exchange as shown in figure 6.2.1-1 below.

**Figure 6.2.1-1: Message exchange for WISP Workflow Endpoint**

### 6.2.2 Message contents

The Header section of each HI-1 message (see ETSI TS 103 120 [1], clause 6.2) shall be populated as described in table 6.2.2-1 below.

**Table 6.2.2-1: HI-1 Message Header**

Field	Description	M/C/O	Reference
SenderIdentifier	Shall be set to a value which identifies the Service Provider, and which shall be agreed when the Service Provider is on-boarded to the E-Evidence platform.	M	ETSI TS 103 120 [1], clause 6.2.4
ReceiverIdentifier	Shall be set to a value which identifies the destination of the message (e.g. Issuing Authority or Enforcing Authority).	M	ETSI TS 103 120 [1], clause 6.2.4
TransactionIdentifier	Shall be set to a unique UUID value for this transaction.	M	ETSI TS 103 120 [1], table 6.1
Timestamp	Shall be set to the time the message was sent by the Service Provider.	M	ETSI TS 103 120 [1], table 6.1
Version	Shall be populated with a version of ETSI TS 103 120 [1] no earlier than V1.19.1. The NationalProfileOwner shall be set to "EU" and the NationalProfileVersion shall be set to the version of the present document.	M	ETSI TS 103 120 [1], clause 6.2.3

The SenderIdentifier and ReceiverIdentifier shall be set as per ETSI TS 103 120 [1], clause 6.2.4.

The Payload of each message shall be set according to details given in the relevant Workflow Endpoint clause.

## 6.3 Outcome Endpoint

### 6.3.1 Description

This endpoint covers the Service Provider sending the requested data back to the nominated recipient. In case of large file sizes, only a download URL and associated metadata is sent, indicating how to download the requested data outside of the decentralized IT system.

### 6.3.2 Message contents

The contents of the Request shall be as per table 6.3.2-1 below.

**Table 6.3.2-1: HI-1 Objects for the Outcome Workflow Endpoint**

Verb	HI-1 Object	Cardinality	Description	Reference
DELIVER	DeliveryObject	1..n	Provides the outcome of the request.	Clause 6.3.3
CREATE	NotificationObject	0..n	Shall be present to indicate when the final outcome for a given identifier has been provided.	Clause 6.3.4
CREATE	DocumentObject	0..n	May be used for any additional attachments that are sent as part of the message.	Annex B

### 6.3.3 DeliveryObject

The Request shall contain a DELIVER Request for one or more DeliveryObjects containing the outcome of the request. The data may be provided as a single DeliveryObject (i.e. as a single file) or as multiple DeliveryObjects (i.e. as multiple independent files) in each invocation of the endpoint, as determined by the Service Provider. The Service Provider may also, subject to agreement with the WISP, choose to provide data in multiple invocations of this endpoint. When the Service Provider has sent the final outcome for a given LDTask, a NotificationObject shall be created (see clause 6.3.4).

The fields in table 6.3.3-1 shall be present in each DeliveryObject.

The sequencing mechanism described in ETSI TS 103 120 [1], clause 10.2.3 shall not be used; each DeliveryObject shall contain the entire contents of the relevant file.

**Table 6.3.3-1: DeliveryObject fields in the Outcome Workflow Endpoint**

Field	Description	M/C/O	Reference
CountryCode	Shall be set to the appropriate ISO country code for the Service Provider.	M	ETSI TS 103 120 [1], table 7.1
OwnerIdentifier	Shall be set to the appropriate technical identifier for the Service Provider.	M	ETSI TS 103 120 [1], table 7.1
AssociatedObjects	Shall be set to include the ObjectID of the original AuthorisationObject used in the Production Workflow Endpoint (see clause 5.3). Shall also include a reference to each of the LDTaskObjects for which the DeliveryObject contains outcome data (see clause 5.3) as per ETSI TS 103 120 [1], clause 10.2.1.	M	ETSI TS 103 120 [1], clause 7.1.4
Reference	Shall be set to the Reference used in the LDTaskObject(s) created in the Production Workflow Endpoint (see clause 5.3).	M	ETSI TS 103 120 [1], table 10.1
SequenceNumber	Since DeliveryObjects may not be split across multiple DELIVER actions, this field shall be omitted as per ETSI TS 103 120 [1], table 10.1.	N/A	ETSI TS 103 120 [1], table 10.1
LastSequence	Since DeliveryObjects may not be split across multiple DELIVER actions, this field shall be omitted as per ETSI TS 103 120 [1], table 10.1.	N/A	ETSI TS 103 120 [1], table 10.1
Manifest	Shall be present and populated according to ETSI TS 103 120 [1], clause 10.2.2.	M	ETSI TS 103 120 [1], clause 10.2.2
Delivery	See table 6.3.3-2.	M	Table 6.3.3-2 and ETSI TS 103 120 [1], table 10.1
EncryptionDetails	Shall be present if encryption has been requested by the Issuing Authority, even if encryption was not applied to the outcome data. See table 6.3.3-3 EncryptionDetails.	C	ETSI TS 103 120 [1] clause 10.2.6.

**Table 6.3.3-2: Delivery fields in the Outcome Workflow Endpoint**

Field	Description	Reference
XMLData	Shall be chosen if the Service Provider wishes to provide the data in XML format.	ETSI TS 103 120 [1], clause 10.2.3
BinaryData	Shall be chosen if the Service Provider wishes to provide the data in any other format than XML (or wishes to encode the XML in another encapsulation prior to delivery). This includes JSON (e.g. if ETSI TS 103 705 [i.4] is chosen as a delivery format).	ETSI TS 103 120 [1], clause 10.2.3
URL	Shall be chosen by the Service Provider if the size of the data exceeds the limits of the decentralized IT system, and therefore wishes to provide a URL for the recipient to download the data.	ETSI TS 103 120 [1], table 10.7

If the Issuing Authority requested the outcome data to be encrypted (see clause 5.3.5), the Service Provider shall populate the EncryptionDetails structure as given in table 6.3.3-3.

**Table 6.3.3-3: EncryptionDetails**

Field	Description	Reference
EncryptionReference	Identifier of the Encryption Object used to encrypt the delivered data. It is not set if encryption was requested but the outcome data was not encrypted.	ETSI TS 103 120 [1], clause 10.2.6
AdditionalInformation	Contains additional information about the encryption of the outcome data. Specifically, if optional encryption was requested but the outcome data was not encrypted, this field shall contain a free-text explanation for why.	ETSI TS 103 120 [1], clause 10.2.6

## 6.3.4 NotificationObject

The Request shall contain a CREATE Request for a NotificationObject for each LDTask for which all outcome data has been provided by the Service Provider.

The fields in table 6.3.4-1 shall be present in the NotificationObject.

**Table 6.3.4-1: NotificationObject fields in Outcome Workflow Endpoint**

Field	Description	M/C/O	Reference
AssociatedObjects	Shall contain a reference to the LDTask for which data has been completely provided.	M	Clause 5.4
NotificationType	Shall be set to the EPOCNotificationType DictionaryEntry value "OutcomeSent".	M	Table 6.3.4-2
NewNotification	Shall be set to "true", following the rules set out in ETSI TS 103 120 [1], clause 7.4.4.	M	ETSI TS 103 120 [1], clause 7.4.4
NotificationTimestamp	Shall be set to the time at which the outcome data was sent by the Service Provider.	M	ETSI TS 103 120 [1], clause 7.4.5
StatusOfAssociatedObjects	Shall include the status of the LDTask has been set to the LDTaskStatus DictionaryEntry value "Disclosed".	M	ETSI TS 103 120 [1], clause 8.3.3

**Table 6.3.4-2: EPOCNotificationType Dictionary (partial)**

Dictionary Owner	Dictionary Name
ETSI	EPOCNotificationType
Defined DictionaryEntries	
Value	Meaning
OutcomeSent	Indicates that the Service Provider has sent all of the outcome data for the related LDTask object.

## 6.4 Non Execution Workflow Endpoint

### 6.4.1 Description

This endpoint covers the Service Provider notifying the Issuing Authority information on the impossibility of executing an EPOC or EPOC-PR (Form 3).

### 6.4.2 Message contents

The contents of the Request shall be as per table 6.4.2-1 below.

**Table 6.4.2-1: HI-1 Objects for the Non Execution Workflow Endpoint**

Verb	HI-1 Object	Cardinality	Description	Reference
CREATE	NotificationObject	1..n	If the non-execution relates to an entire EPOC or EPOC-PR, a NotificationObject is provided that indicates that the state of the AuthorisationObject has changed to reflect the non-execution. If the non-execution relates to specific LDTaskObjects or LPTaskObjects within the EPOC or EPOC-PR, a separate NotificationObject is provided for each such LDTaskObject or LPTaskObject to indicate that the state of each has been changed to reflect the non-execution.	Clause 6.4.3
DELIVER	DocumentObject	1	Provides the signed PDF containing Form 3.	Annex C
DELIVER	Form3Information	1	Provides structured information on the reasons for the non-execution.	Annex B.4
CREATE	DocumentObject	0..n	May be used for any additional attachments that are sent as part of the message.	Annex B

### 6.4.3 NotificationObject

The Request shall contain a CREATE Request for a NotificationObject that indicates that the state of the Authorisation has changed to reflect the de-facto impossibility.

The fields given in table 6.4.3-1 shall be present in the NotificationObject.

**Table 6.4.3-1: NotificationObject fields in the De Facto Impossibility Workflow Endpoint**

Field	Description	M/C/O	Reference
AssociatedObjects	Shall contain a reference to the original EPOC or EPOC-PR as created during the Production (see clause 5.3) or Preservation (see clause 5.7).	M	Clause 5.4
NotificationDetails	May contain any human-readable information that the Service Provider wishes to provide.	C	ETSI TS 103 120 [1], table 7.19
NotificationType	Shall be set to the EPOCNotificationType DictionaryEntry value "NonExecution".	M	Table 6.4.3-2
NewNotification	Shall be set to "true", following the rules set out in ETSI TS 103 120 [1], clause 7.4.4.	M	ETSI TS 103 120 [1], clause 7.4.4
NotificationTimestamp	Shall be set to the time at which the objection was raised.	M	ETSI TS 103 120 [1], clause 7.4.5
StatusOfAssociatedObjects	<p>If the non-execution relates to an entire EPOC or EPOC-PR, shall include one StatusOfAssociatedObject structure populated as per table 6.4.3-3 to indicate the change of status of the AuthorisationObject for the EPOC (see clause 5.3.3) or EPOC-PR (see clause 5.7.3) to "Invalid".</p> <p>If the non-execution relates to an individual LDTaskObject or LPTaskObject, shall also include a StatusOfAssociatedObject structure populated as per table 6.4.3-4 for each LDTask Object (see clause 5.3.4) or LPTask Object (see clause 5.7.4) associated with an identifier to indicate the change of status to "Invalid".</p>	M	Table 6.4.3-3, table 6.4.3-4 and ETSI TS 103 120 [1], clause 7.4.7

**Table 6.4.3-2: EPOCNotificationType Dictionary**

Dictionary Owner	Dictionary Name
ETSI	EPOCNotificationType
Defined DictionaryEntries	
Value	Meaning
NonExecution	Indicates that the Service Provider has raised an objection to the EPOC or EPOC-PR according to the Regulation [i.1] Form 3.
DataPreserved	Indicates that the Service Provider has preserved data in accordance with the associated EPOC-PR.
ConfirmationOfWithdrawal	Indicates that the Service Provider is confirming the withdrawal of an EPOC.

**Table 6.4.3-3: StatusOfAssociatedObject for AuthorisationObject**

Field	Description	M/C/O	Reference
AssociatedObject	Shall be set to the Object Identifier of the AuthorisationObject.	M	Clause 5.3.3 and ETSI TS 103 120 [1], table 7.20a
Status	Shall be set to the value "Invalid" from the AuthorisationStatus Dictionary.	M	ETSI TS 103 120 [1], table 7.6
Details	Shall include the relevant information from Form 3 Section E, along with any other relevant information which the Service Provider wishes to provide.	M	ETSI TS 103 120 [1], table 7.20a

**Table 6.4.3-4: StatusOfAssociatedObject for LPTaskObject or LDTaskObject**

Field	Description	M/C/O	Reference
AssociatedObject	Shall be set to the Object Identifier of the LPTask or LDTask related to the identifier for which there is an issue (see clauses 5.3.4 and 5.7.4).	M	Clause 5.3.4, 5.7.4, and ETSI TS 103 120 [1], table 7.20a
Status	Shall be set to the value "Invalid" from the LPTaskStatus or LDTaskStatus Dictionary.	M	ETSI TS 103 120 [1], table 8.3 and table 8.17
Details	Shall include the relevant information from Form 3 Section D, along with any other relevant information which the Service Provider wishes to provide.	M	ETSI TS 103 120 [1], table 7.20a

## 6.4.4 Form3Information

The Request shall contain a CREATE Request for a Form3Information object as described in table 6.4.2-1.

The Form3Information shall contain a reference to the relevant Authorisation Object in the AssociatedObjects field (see ETSI TS 103 120 [1], clause 7.1.4).

**Table 6.4.4-1: Form3Information**

Field	Description	M/C/O	Reference
CaseDetails	Provides the information specified in Form 3 sections B and C.	C	Table 6.4.4-1a
NonExecutionReasons	Provides reasons for non-execution as specified in Form 3 section D. Multiple NonExecutionReasons may be specified.	C	Table 6.4.4-2
ConflictOfLaw	Provides information on the relevant conflict of laws if specified in Form 3 Section E.	C	Table 6.4.4-3
RequestForClarification	Request for additional information or clarification if specified in Form 3 Section F.	C	Table 6.4.4-5
PreservationStatus	Provides information on whether data has been preserved if specified in Form 3 Section G.	C	None
AdditionalInformation	Provides any other information provided in Form 3 Section G.	C	None

**Table 6.4.4-1a: CaseDetails**

Field	Description	M/C/O	Reference
ValidatingAuthorityFileNumber	Provides the Validating Authority file number, if specified in Form 3 Section B.	C	
EnforcingAuthority	Provides the technical identifier for the relevant Enforcing Authority as specified in Form 3 Section B.	C	
EnforcingAuthorityFileNumber	Provides the Enforcing Authority file number, if specified in Form 3 Section B.	C	
DateOfIssue	Provides the date that the EPOC/EPOC-PR was issued by the Issuing Authority, if specified in Form 3 Section B	C	
DateOfReceipt	Provides the date that the EPOC/EPOC-PR was received by the Service Provider, if specified in Form 3 Section B.	C	
AddresseeFileNumber	Provides the file number of the addressee, if specified in Form 3 Section C.	C	
ContactDetails	Details of the relevant representative as specified in Form 3 Section H.	M	Table 6.4.4-1b

**Table 6.4.4-1b: ApproverDetails for Form 3**

Field	Description	M/C/O	Reference
ApproverName	Shall be set to the value given as "Name of the authorised person" in Form 3 Section H.	M	ETSI TS 103 120 [1], table E.2
ApproverContactDetails	Shall contain at a single instance of ApproverContactDetails.	M	Table 6.4.4-1c

**Table 6.4.4-1c: ApproverContactDetails for Form 3**

Field	Description	M/C/O	Reference
Name	Shall be set to the value given as "Name of the contact person" in Form 3 Section H.	M	ETSI TS 103 120 [1], clause 7.1.7
Role	Shall be set to the value given as "Post held" in Form 3 Section H.	C	ETSI TS 103 120 [1], clause 7.1.7
EmailAddress	Shall be set to the value given as the relevant "Email Address" field in Form 3 Section H.	C	ETSI TS 103 120 [1], clause 7.1.7
PhoneNumber	Shall be set to the value given as the relevant "Tel No" field in Form 3 Section H.	C	ETSI TS 103 120 [1], clause 7.1.7
FaxNumber	Shall be set to the value given as the relevant "Fax No" field in Form 3 Section H.	C	ETSI TS 103 120 [1], clause 7.1.7
Address	Shall be set to the value given as the relevant "Address" field in Form 3 Section H.	C	ETSI TS 103 120 [1], clause 7.1.7

**Table 6.4.4-2: NonExecutionReasons**

Field	Description	M/C/O	Reference
RelatedTask	If the reason is related to a specific LDTaskObject, provides the Object Identifier of the relevant LDTask object. Omitted otherwise.	C	None
Reason	Provides an indication of the reason for non execution as chosen from Section D. May be specified more than once.	C	None
ExplanationOrOtherReason	Provides any additional free-text explanation for the reasons of non-execution.	C	None

**Table 6.4.4-3: ConflictOfLaw**

Field	Description	M/C/O	Reference
TitleOfLaw	Free text description of the title of the conflicting law.	C	None
ApplicableStatutoryProvisions	Free text description of the appropriate statutory provisions.	C	None
NatureOfConflictingObligations	List of NatureOfConflictingObligation.	C	Table 6.4.4-4
WhyConflictOfLawConsidered	Free text description of why the conflict is considered to exist.	C	None
LinkBetweenServiceProviderAndThirdCountry	Free text description of the link between the SP and the third country.	C	None
ConsequencesForAddressee	Free text description of the consequences for the addressee.	C	None
AnyOtherRelevantInformation	Free text providing any additional relevant information.	C	None

**Table 6.4.4-4: NatureOfConflictingObligation**

Field	Description	M/C/O	Reference
Interest	Indicates whether the conflict of law pertains to the fundamental rights of the individual, to the fundamental interests of a third country, or some other interest.	M	None
Description	Free text description of the nature of the conflicting obligations.	C	None

**Table 6.4.4-5: RequestForClarification**

Field	Description	M/C/O	Reference
InformationRequiredFromIssuingAuthority	Free text description of the information required from the Issuing Authority.	C	None

**Table 6.4.4-6: PreservationStatus**

Field	Description	M/C/O	Reference
RelatedTask	If the status is related to a specific LDTaskObject, provides the Object Identifier of the relevant LDTask object. If omitted, the status may be understood to apply to all LDTasks related to the original request.	C	None
Status	Indicates whether the data has been preserved or not	M	None

## 6.5 Data Preserved Workflow Endpoint

### 6.5.1 Description

This endpoint covers the Service Provider notifying the Issuing Authority that data has been preserved according to an EPOC-PR.

### 6.5.2 Message contents

The contents of the Request shall be as per table 6.5.2-1 below.

**Table 6.5.2-1: HI-1 Objects for the Data Preserved Workflow Endpoint**

Verb	HI-1 Object	Cardinality	Description	Reference
CREATE	NotificationObject	1..n	Indicates that the state of the LPTaskObject status has changed to reflect the preservation of data.	Clause 6.5.3

### 6.5.3 NotificationObject

The Request shall contain a CREATE Request for a NotificationObject that indicates that the data has been preserved.

The fields in table 6.5.3-1 shall be present in the NotificationObject.

**Table 6.5.3-1: NotificationObject fields in the Data Preserved Workflow Endpoint**

Field	Description	M/C/O	Reference
NotificationDetails	May contain any human-readable information that the Service Provider wishes to provide.	C	ETSI TS 103 120 [1], table 7.19
NotificationType	Shall be set to the EPOCNotificationType DictionaryEntry value "DataPreserved".	M	Table 6.4.3-2
NewNotification	Shall be set to True, following the rules set out in ETSI TS 103 120 [1], clause 7.4.4.	M	ETSI TS 103 120 [1], clause 7.4.4
NotificationTimestamp	Shall be set to the time at which the notification was raised.	M	ETSI TS 103 120 [1], clause 7.4.5
StatusOfAssociatedObjects	Shall be set to indicate that the status of each LPTaskObject related to the EPOC-PR (see clause 5.4) has changed to "Preserved".	M	ETSI TS 103 120 [1], clauses 7.4.7 and 8.2.8

## 6.6 Correspondence Endpoint

### 6.6.1 Description

This endpoint is used by the Service Provider to exchange free-text correspondence with the Issuing Authority or Enforcing Authority, together with associated documentation, for one of the following purposes:

- To request additional information from the relevant Authority.
- To provide additional information to the relevant Authority in response to a query.

### 6.6.2 Message contents

The contents of the Request shall be as per table 6.6.2-1 below.

**Table 6.6.2-1: HI-1 Objects for the Correspondence Workflow Endpoint**

Verb	HI-1 Object	Cardinality	Description	Reference
DELIVER	DocumentObject	1	Document containing the correspondence.	Clause 6.6.3
CREATE	DocumentObject	0..n	May be used for any additional attachments that are sent as part of the message.	Annex B

### 6.6.3 DocumentObject

The Request shall contain at least one DELIVER Request for a DocumentObject that represents the correspondence, which shall contain the fields given in table 6.6.3-1.

**Table 6.6.3-1: DocumentObject fields in the Correspondence Workflow Endpoint**

Field	Description	M/C/O	Reference
CountryCode	Shall be set to the appropriate ISO country code for source of the correspondence.	M	ETSI TS 103 120 [1], table 7.1
OwnerIdentifier	Shall be set to the appropriate technical identifier for the source of the correspondence.	M	ETSI TS 103 120 [1], table 7.1
AssociatedObjects	Shall include the Object ID of the original AuthorisationObject created with either the Production Workflow Endpoint (see clause 5.3) or Preservation Workflow Endpoint (see clause 5.7). If this correspondence is in response to a prior one (e.g. providing additional information in relation to a request for information), then the Object ID of that prior correspondence shall also be included.	M	ETSI TS 103 120 [1], clause 7.1.4
DocumentName	Shall be set to "Correspondence".	M	ETSI TS 103 120 [1], clause 7.3.3
DocumentType	Shall be set to either "RequestAdditionalInformation" or "ProvideAdditionalInformation" from the EPOCDocumentType dictionary as appropriate.	M	Table 5.12.3-2
DocumentProperties	If the DocumentType "RequestAdditionalInformation" is chosen, and a response is required by a particular deadline, then this field shall contain a property with a PropertyType of "ResponseRequiredBy" from the "EPOCDocumentPropertyType" dictionary (see table 5.12.3-3), and a date-time given as a string matching the format required by a QualifiedDateTime (see ETSI TS 103 280 [2], clause 6.4).	C	ETSI TS 103 120 [1], clause 7.3.8
DocumentBody	Contains a binary document containing supporting information, along with relevant metadata according to ETSI TS 103 120 [1], clause 7.3.9. Shall be populated if the chosen DocumentType is "RequestAdditionalInformation" or "ProvideAdditionalInformation", and may be provided in all other circumstances.	C	ETSI TS 103 120 [1], clause 7.3.9

## 6.7 Confirm Withdrawal Workflow Endpoint

### 6.7.1 Description

This endpoint covers the Service Provider confirming that an EPOC has been withdrawn by the Issuing Authority (see clause 5.6).

### 6.7.2 Message contents

The contents of the Request shall be as per table 6.7.2-1 below.

**Table 6.7.2-1: HI-1 Objects for the Confirm Withdrawal Workflow Endpoint**

Verb	HI-1 Object	Cardinality	Description	Reference
CREATE	NotificationObject	1	Indicates that the state of the AuthorisationObject Status has changed to reflect the withdrawal of the request.	Clause 6.7.3

### 6.7.3 NotificationObject

The Request shall contain a CREATE Request for a NotificationObject that indicates that the state of the Authorisation has changed to reflect the de-facto impossibility.

The fields given in table 6.7.3-1 shall be present in the NotificationObject.

**Table 6.7.3-1: NotificationObject fields in the Confirm Withdrawal Workflow Endpoint**

Field	Description	M/C/O	Reference
NotificationDetails	May contain any human-readable information that the Service Provider wishes to provide.	C	ETSI TS 103 120 [1], table 7.19
NotificationType	Shall be set to the EPOCNotificationType DictionaryEntry value "ConfirmationOfWithdrawal".	M	Table 6.4.3-2
NewNotification	Shall be set to True, following the rules set out in ETSI TS 103 120 [1], clause 7.4.4.	M	ETSI TS 103 120 [1], clause 7.4.4
NotificationTimestamp	Shall be set to the time at which the notification was raised.	M	ETSI TS 103 120 [1], clause 7.4.5
StatusOfAssociatedObjects	Shall be set to indicate that the AuthorisationObject related to the EPOC (see clause 5.2) has changed to "Cancelled".	M	ETSI TS 103 120 [1], clauses 7.4.7 and 8.2.8

## 6.8 Enforcing Authority Identifier Endpoint

### 6.8.1 Description

This endpoint allows a Service Provider to retrieve the identifier of the Enforcing Authority it is associated with. The Service Provider gets the identifier of the Issuing Authority when it receives a message from it, since all of the messages between Service Providers and Issuing Authorities are initiated by the Issuing Authority. However, a Service Provider may need to initiate a message exchange to the Enforcing Authority.

### 6.8.2 Message contents

The Header section of this HI-1 message is different than for all the other WISP Workflow Endpoints and shall be populated as per table 6.8.2-1 below.

**Table 6.8.2-1: HI-1 Message Header**

Field	Description	M/C/O	Reference
SenderIdIdentifier	Shall be set to a value which identifies the Service Provider, and which shall be agreed when the Service Provider is on-boarded to the E-Evidence platform.	M	ETSI TS 103 120 [1], clause 6.2.4
ReceiverIdentifier	Unspecified.		
TransactionIdentifier	Shall be set to a unique UUID value for this transaction.	M	ETSI TS 103 120 [1], table 6.1
Timestamp	Shall be set to the time the message was sent by the Service Provider.	M	ETSI TS 103 120 [1], table 6.1
Version	Shall be populated with a version of ETSI TS 103 120 [1] no earlier than V1.19.1. The NationalProfileOwner shall be set to "EU" and the NationalProfileVersion shall be set to the version of the present document.	M	ETSI TS 103 120 [1], clause 6.2.3

The Payload of the message shall be empty.

In response to this message, the WISP shall reply with a fully populated HI-1 message header and an empty payload.

## 6.9 Authorities Query Endpoint

### 6.9.1 Description

This endpoint allows a Service Provider to retrieve the list of Authorities registered in the e-Evidence DIS. The endpoint supports the LIST operation to list the metadata about existing authorities, and the GET operation on a single authority identifier to retrieve all the information about the specified authority.

## 6.9.2 AuthorityObject

This object describes an Authority as registered in the Court Database (CDB) of the DIS. An Authority is a DIS actor that can assume the role of an Issuing Authority, a Validating Authority, an Enforcing Authority or any other type of Authorities.

**Table 6.9.2-1: AuthorityObject fields**

Field	Description	M/C/O	Reference
ObjectIdentifier	The unique identifier of the Authority.	M	ETSI TS 103 120 [1] table 7.1
CountryCode	Shall be set to the appropriate ISO country code for Member State where the Authority is registered.	O	ETSI TS 103 120 [1] table 7.1
OwnerIdentifier	Shall be set to the appropriate technical identifier for the Authority.	O	ETSI TS 103 120 [1] table 7.1
Name	The official name of the Authority.	O	LongString (see ETSI TS 103 280 [2], clause 6.30)
Competencies	The list of competencies that this authority can assume.	O	Table 6.9.2-2

**Table 6.9.2-2: Competency Dictionary**

Dictionary Owner	Dictionary Name
ETSI	EPOCDocumentProperties
Defined DictionaryEntries	
Value	Meaning
IssuingAuthority	The authority can act as issuing authority and issue EPOC and EPOC-PR.
ValidatingAuthority	The authority can act as validating authority and validate that an EPOC or EPOC-PR is valid before being sent to the Service Provider.
EnforcingAuthority	The authority can act as an enforcing authority and arbitrate an EPOC or EPOC-PR when notified.
CentralAuthority	The authority can act as a central authority.
ReceivingAuthority	The authority can act as a receiving authority and receive the user data associated with an EPOC.

## 6.9.3 Message contents

The Header section of this HI-1 message is the same as for the Enforcing Authority Identifier Endpoint and different than for all the other WISP Workflow Endpoint. It shall be populated as per table 6.8.2-1.

The endpoint supports:

- **LIST Action:** The payload of the message shall be a LIST Request (see ETSI TS 103 120 [1], table 6.12). In response to this message, the WISP shall reply with a list of LIST ResponseRecord (see ETSI TS 103 120 [1], table 6.13), which provides the metadata about the Authorities that comply with the request parameters provided.
- **GET Action:** The payload of the message shall be an AuthorityObject identifier (see ETSI TS 103 120 [1], table 6.6). In response to this message, the WISP shall provide the AuthorityObject identified by the identifier provided (see ETSI TS 103 120 [1] table 6.7).

---

## 7 Transport and security

### 7.1 Transport

Transport shall be HTTP as per ETSI TS 103 120 [1], clause 9.3 and shall use HTTPS as per ETSI TS 103 120 [1], clause 9.3.4. See also clause 7.2 of the present document.

Messages shall be encoded using XML according to ETSI TS 103 120 [1], clause 9.2.1. JSON encoding shall not be used.

### 7.2 Security

ETSI TS 103 120 [1], clause 9.3.4 shall be followed.

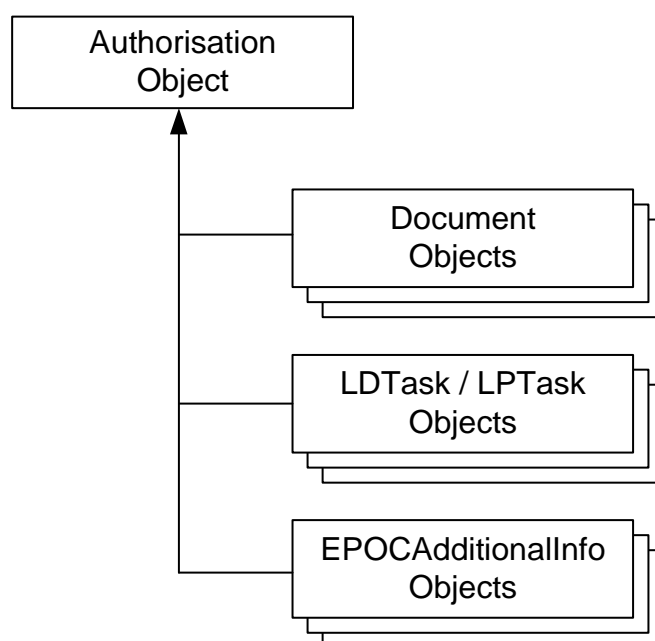
# Annex A (normative): Object Model

## A.1 Object Model

ETSI TS 103 120 [1] defines a set of HI-1 Objects. Each of these Objects contains information about a specific part of a given workflow. ETSI TS 103 120 [1], clauses 7, 8 and 10 define a set of standard Objects, while Annex B of the present document defines further HI-1 Objects that are specific to e-Evidence.

Associations between Objects can be made using the AssociatedObjects field (see ETSI TS 103 120 [1], clause 7.1.4). The state of a given business process (such as an e-Evidence request) is therefore represented by a set of HI-1 Objects that are related to each other in a particular way. This is referred to as an Object Model.

The Workflow Profile defined in the present document uses the Object Model shown in figure A.1-1 below.



**Figure A.1-1: Object model for the EPOC Workflow Profile**

There is a single AuthorisationObject that represents the current overall state of the lawful authority covering the EPOC / EPOC-PR.

There is at most one Document Object that contain a PDF representation of the E-Evidence forms that form the lawful authority under which the EPOC / EPOC-PR is issued (see annex C).

There are one or more LDTask or LPTask Objects which contain ETSI TS 103 120 [1] format descriptions of what is required to be disclosed or preserved under the EPOC / EPOC-PR.

There are zero or more EPOCAdditionalInfo Objects which contain implementation-specific unmapped XML information (see clause B.2).

There are zero or more additional Document Objects that contain arbitrary attachments provided by the calling party as part of the Workflow Endpoint (see clause B.3).

The Workflow Profile operations described in the following clauses provide mechanisms to create, maintain and terminate EPOC and EPOC-PR procedures.

## Annex B (normative): Supplementary information in Workflow Endpoints

### B.1 Overview

The present clause describes how additional unmapped XML and arbitrary attachments may be communicated along with any Request message to a Workflow Endpoint.

### B.2 EPOCAdditionalInfo

Each Request to a Workflow Endpoint may contain an EPOCAdditionalInfo object, which is used to carry any additional structured information beyond that being mapped to other HII Objects, following the principles described in clause 4.2. This information is provided at the discretion of the RI implementation, and the format and meaning of any such information is left to the implementer providing it.

The fields in each EPOCAdditionalInfo shall be as given in table B.2-1.

**Table B.2-1: EPOCAdditionalInfo**

Field	Description	M/C/O	Reference
UnmappedXML	Provides a means of communicating additional structured XML information that is not covered by the present document. The format, structure and meaning of this information is left to the implementer providing it.	M	None

### B.3 Arbitrary attachments

Each Request to a Workflow Endpoint may contain zero or more arbitrary attachments. Each such attachment is represented as a Document Object, with fields populated as per table B.3-1 below.

**Table B.3-1: DocumentObject fields for arbitrary attachments**

Field	Description	M/C/O	Reference
CountryCode	Shall be set to the appropriate ISO country code for the source of the attachment.	M	ETSI TS 103 120 [1], table 7.1
OwnerIdentifier	Shall be set to the appropriate technical identifier for the source of the attachment.	M	ETSI TS 103 120 [1], table 7.1
AssociatedObjects	If associated with an EPOC or EPOC-PR, this shall include the Object ID of the original AuthorisationObject created with either the Production Workflow Endpoint (see clause 5.3) or Preservation Workflow Endpoint (see clause 5.7).	M	ETSI TS 103 120 [1], clause 7.1.4
DocumentName	May be set to a value chosen by the source of the attachment.	C	ETSI TS 103 120 [1], clause 7.3.3
DocumentType	Shall be set to the value "OtherAttachment" from the EPOCDocumentType Dictionary.	M	Table C.2-2
DocumentBody	Contains the contents of the attachment.	M	ETSI TS 103 120 [1], clause 7.3.9

## Annex C (normative): DocumentObject encoding for EPOC/EPOC-PR forms

### C.1 Overview

This clause defines how the forms defined in the Regulation [i.1] (e.g. Form 1, Form 2, etc.) are carried using the DocumentObject format defined in ETSI TS 103 120 [1], clause 7.3.

### C.2 DocumentObject fields

The DocumentObject fields shall be set as per table C.2-1 below.

**Table C.2-1: DocumentObject fields for EPOC/EPOC-PR forms**

Field	Description	M/C/O	Reference
CountryCode	Shall be set to the appropriate ISO country code for the Issuing Authority of the form.	M	ETSI TS 103 120 [1], table 7.1
OwnerIdentifier	Shall be set to the appropriate technical identifier for the Issuing Authority of the form.	M	ETSI TS 103 120 [1], table 7.1
AssociatedObjects	Shall include the Object ID of the original AuthorisationObject created with either the Production Workflow Endpoint (see clause 5.3) or Preservation Workflow Endpoint (see clause 5.7).	M	ETSI TS 103 120 [1], clause 7.1.4
DocumentName	Shall be set to "EPOC/EPOC-PR Form".	M	ETSI TS 103 120 [1], clause 7.3.3
DocumentType	Shall be set to the relevant value from the EPOCDocumentType Dictionary (see table C.2-2).	M	Table C.2-2
DocumentBody	Contains a binary document containing the signed PDF.	M	ETSI TS 103 120 [1], clause 7.3.9

**Table C.2-2: EPOCDocumentType Dictionary (partial)**

Dictionary Owner	Dictionary Name
ETSI	EPOCDocumentType
Defined DictionaryEntries	
Value	Meaning
Form1	The DocumentObject contains a signed EPOC certificate from Annex I of the Regulation [i.1] (Form 1).
Form2	The DocumentObject contains a signed EPOC-PR certificate from Annex II of the Regulation [i.1] (Form 2).
Form3	The DocumentObject contains a signed notice regarding the impossibility of executing an EPOC/EPOC-PR as defined in Annex III of the Regulation [i.1] (Form 3).
Form5	The DocumentObject contains a signed confirmation of issuance of request for production following an EPOC-PR as defined in Annex V of the Regulation [i.1] (Form 5).
Form6	The DocumentObject contains a signed notice of extension of an EPOC-PR as defined in Annex VI of the Regulation [i.1] (Form 6).
OtherAttachment	The DocumentObject contains an arbitrary attachment as described in clause B.3 of the present document.

---

## Annex D (informative): Examples

### D.1 Example files

The ETSI Forge provides a list of example XML files that illustrate how the message flows given in the present document may be rendered. These examples are intended only as illustrations and are not exhaustive. In the event of a discrepancy between the present document and an example, the present document is considered authoritative.

- [https://forge.etsi.org/rep/li/schemas-definitions/-/tree/main/104144/examples?ref\\_type=heads](https://forge.etsi.org/rep/li/schemas-definitions/-/tree/main/104144/examples?ref_type=heads)

These examples demonstrate Workflow Endpoints that exchange forms defined by the Regulation [i.1], but should not be considered as representative of real signed documents. In particular, they do not contain digital signatures.

**Table D.1-1: Example XML files**

Example file	Description
form1.xml	Production request (EPOC Form 1)
form2.xml	Preservation request (EPOC-PR Form 2)
form3.xml	Notification of impossibility (Form 3)
form5.xml	Notification of subsequent production (Form 5)
form6.xml	Extension of preservation (Form 6)

## Annex E (informative): Change history

Status of Technical Specification ETSI TS 104 144 Interface definition for the e-Evidence Regulation (EU) 2023/1543 for National Authorities and Service Providers		
TC LI approval date	Version	Remarks
June 2025	V1.1.1	First publication of the TS after approval at ETSI TC LI#69 in Trondheim (Norway)
October 2025	V1.2.1	Included Change Requests agreed by ETSI TC LI#70 CR001, LI(25)70017r1 (Cat F) Changing terminology of "RI-API" CR002, LI(25)70018r3 (Cat C) Additional structured information for Form 3 CR003, LI(25)70019r1 (Cat F) Editorial corrections CR004, LI(25)70046r1 (Cat F) Correcting SenderID / ReceiverID CR005, LI(25)70023r2 (Cat F) Corrections related to Section E and F CR006, LI(25)70048r1 (Cat B) e-Evidence Workflows CR007, LI(25)70049r2 (Cat B) Additional endpoint to query DIS Authorities
January 2026	V1.3.1	Included Change Requests agreed by ETSI TC LI#71 CR008, LI(26)P71011 (Cat F) Clarifying the use of Deadlines CR009, LI(26)P71012r2 (Cat C) Clarifications related to delivery CR010, LI(26)P71013r7 (Cat B) Supporting encryption of outcome data CR011, LI(26)P71014r3 (Cat F) Grounds For Refusal CR013, LI(26)P71029r1 (Cat F) Clarification on RequestValue mapping CR014, LI(26)P71030r2 (Cat B) New Endpoint for NonExecution status CR015, LI(26)P71034r2 (Cat B) Add support for underlying conditions CR017, LI(26)P71046 (Cat F) Additional documents
April 2026	V1.4.1	Included Change Requests agreed by ETSI TC LI#72 CR018, LI(26)72009r2 (Cat F) Form 3 corrections CR019, LI(26)72010r1 (Cat C) Simplification of Grounds For Refusal CR020, LI(26)72011r1 (Cat C) Clarification of related correspondences CR021, LI(26)72012r2 (Cat F) Minor corrections CR022, LI(26)72021r2 (Cat B) Add support for delivery to "other competent authority" CR023, LI(26)72025r3 (Cat B) Adding the enforcing authority in ApprovalDetails CR024, LI(26)72023 (Cat B) Add support for additional documents for WISP endpoints CR025, LI(26)72007 (Cat C) Tencastle, EVE Compliancy Solutions

---

## History

<b>Version</b>	<b>Date</b>	<b>Status</b>
V1.1.1	June 2025	Publication
V1.2.1	November 2025	Publication
V1.3.1	March 2026	Publication
V1.4.1	May 2026	Publication