

ETSI TS 103 410-6 V2.1.1 (2024-10)



**SmartM2M;
Extension to SAREF;
Part 6: Smart Agriculture and Food Chain Domain**

Reference

RTS/SmartM2M-103410-6v211

Keywords

IoT, oneM2M, ontology, SAREF, semantic

ETSI

650 Route des Lucioles
F-06921 Sophia Antipolis Cedex - FRANCE

Tel.: +33 4 92 94 42 00 Fax: +33 4 93 65 47 16

Siret N° 348 623 562 00017 - APE 7112B
Association à but non lucratif enregistrée à la
Sous-Préfecture de Grasse (06) N° w061004871

Important notice

The present document can be downloaded from the
ETSI [Search & Browse Standards](#) application.

The present document may be made available in electronic versions and/or in print. The content of any electronic and/or print versions of the present document shall not be modified without the prior written authorization of ETSI. In case of any existing or perceived difference in contents between such versions and/or in print, the prevailing version of an ETSI deliverable is the one made publicly available in PDF format on [ETSI deliver](#).

Users should be aware that the present document may be revised or have its status changed,
this information is available in the [Milestones listing](#).

If you find errors in the present document, please send your comments to
the relevant service listed under [Committee Support Staff](#).

If you find a security vulnerability in the present document, please report it through our
[Coordinated Vulnerability Disclosure \(CVD\)](#) program.

Notice of disclaimer & limitation of liability

The information provided in the present deliverable is directed solely to professionals who have the appropriate degree of experience to understand and interpret its content in accordance with generally accepted engineering or other professional standard and applicable regulations.

No recommendation as to products and services or vendors is made or should be implied.

No representation or warranty is made that this deliverable is technically accurate or sufficient or conforms to any law and/or governmental rule and/or regulation and further, no representation or warranty is made of merchantability or fitness for any particular purpose or against infringement of intellectual property rights.

In no event shall ETSI be held liable for loss of profits or any other incidental or consequential damages.

Any software contained in this deliverable is provided "AS IS" with no warranties, express or implied, including but not limited to, the warranties of merchantability, fitness for a particular purpose and non-infringement of intellectual property rights and ETSI shall not be held liable in any event for any damages whatsoever (including, without limitation, damages for loss of profits, business interruption, loss of information, or any other pecuniary loss) arising out of or related to the use of or inability to use the software.

Copyright Notification

No part may be reproduced or utilized in any form or by any means, electronic or mechanical, including photocopying and microfilm except as authorized by written permission of ETSI.

The content of the PDF version shall not be modified without the written authorization of ETSI.

The copyright and the foregoing restriction extend to reproduction in all media.

© ETSI 2024.
All rights reserved.

Contents

Intellectual Property Rights	4
Foreword.....	4
Modal verbs terminology.....	5
1 Scope	6
2 References	6
2.1 Normative references	6
2.2 Informative references.....	6
3 Definition of terms, symbols and abbreviations.....	7
3.1 Terms.....	7
3.2 Symbols.....	7
3.3 Abbreviations	7
4 SAREF4AGRI ontology and semantics.....	7
4.1 Introduction and overview.....	7
4.2 SAREF4AGRI.....	9
4.2.1 Void	9
4.2.2 Platform, System and Deployment	9
4.2.3 Void	9
4.2.4 Animal, Crop and Soil (Feature of Interest)	9
4.2.5 Device.....	11
4.2.6 Property	12
4.2.7 Topology.....	12
4.2.8 Person and Organization.....	13
4.3 Instantiating SAREF4AGRI.....	14
4.3.1 Livestock farming.....	14
4.3.2 Smart Irrigation.....	18
Annex A (informative): Approach	21
Annex B (informative): Bibliography.....	23
History	24

Intellectual Property Rights

Essential patents

IPRs essential or potentially essential to normative deliverables may have been declared to ETSI. The declarations pertaining to these essential IPRs, if any, are publicly available for **ETSI members and non-members**, and can be found in ETSI SR 000 314: "*Intellectual Property Rights (IPRs); Essential, or potentially Essential, IPRs notified to ETSI in respect of ETSI standards*", which is available from the ETSI Secretariat. Latest updates are available on the ETSI Web server (<https://ipr.etsi.org/>).

Pursuant to the ETSI Directives including the ETSI IPR Policy, no investigation regarding the essentiality of IPRs, including IPR searches, has been carried out by ETSI. No guarantee can be given as to the existence of other IPRs not referenced in ETSI SR 000 314 (or the updates on the ETSI Web server) which are, or may be, or may become, essential to the present document.

Trademarks

The present document may include trademarks and/or tradenames which are asserted and/or registered by their owners. ETSI claims no ownership of these except for any which are indicated as being the property of ETSI, and conveys no right to use or reproduce any trademark and/or tradename. Mention of those trademarks in the present document does not constitute an endorsement by ETSI of products, services or organizations associated with those trademarks.

DECT™, **PLUGTESTS™**, **UMTS™** and the ETSI logo are trademarks of ETSI registered for the benefit of its Members. **3GPP™** and **LTE™** are trademarks of ETSI registered for the benefit of its Members and of the 3GPP Organizational Partners. **oneM2M™** logo is a trademark of ETSI registered for the benefit of its Members and of the oneM2M Partners. **GSM®** and the GSM logo are trademarks registered and owned by the GSM Association.

Foreword

This Technical Specification (TS) has been produced by ETSI Technical Committee Smart Machine-to-Machine communications (SmartM2M).

The present document is part 6 of a multi-part deliverable covering SmartM2M; Extension to SAREF, as identified below:

- Part 1: "Energy Domain";
- Part 2: "Environment Domain";
- Part 3: "Building Domain";
- Part 4: "Smart Cities Domain";
- Part 5: "Industry and Manufacturing Domains";
- Part 6: "Smart Agriculture and Food Chain Domain";**
- Part 7: "Automotive Domain";
- Part 8: "eHealth/Ageing-well Domain";
- Part 9: "Wearables Domain";
- Part 10: "Water Domain";
- Part 11: "Lift Domain";
- Part 12: "Smart Grid Domain";
- Part 13: "Maritime Domain".

Modal verbs terminology

In the present document "**shall**", "**shall not**", "**should**", "**should not**", "**may**", "**need not**", "**will**", "**will not**", "**can**" and "**cannot**" are to be interpreted as described in clause 3.2 of the [ETSI Drafting Rules](#) (Verbal forms for the expression of provisions).

"**must**" and "**must not**" are **NOT** allowed in ETSI deliverables except when used in direct citation.

1 Scope

The present document presents SAREF4AGRI, an extension of SAREF for the Smart Agriculture and Food Chain Domain.

2 References

2.1 Normative references

References are either specific (identified by date of publication and/or edition number or version number) or non-specific. For specific references, only the cited version applies. For non-specific references, the latest version of the referenced document (including any amendments) applies.

Referenced documents which are not found to be publicly available in the expected location might be found at <https://docbox.etsi.org/Reference/>.

NOTE: While any hyperlinks included in this clause were valid at the time of publication, ETSI cannot guarantee their long term validity.

The following referenced documents are necessary for the application of the present document.

- [1] [ETSI TS 103 264](#): "SmartM2M; Smart Applications; Reference Ontology and oneM2M Mapping".
- [2] [ETSI TS 103 548](#): "SmartM2M; SAREF reference ontology patterns".
- [3] [ETSI TS 103 673](#): "SmartM2M; SAREF Development Framework and Workflow, Streamlining the Development of SAREF and its Extensions".

2.2 Informative references

References are either specific (identified by date of publication and/or edition number or version number) or non-specific. For specific references, only the cited version applies. For non-specific references, the latest version of the referenced document (including any amendments) applies.

NOTE: While any hyperlinks included in this clause were valid at the time of publication, ETSI cannot guarantee their long term validity.

The following referenced documents are not necessary for the application of the present document but they assist the user with regard to a particular subject area.

- [i.1] ETSI TR 103 411: "SmartM2M Smart Appliances SAREF extension investigation".
- [i.2] ETSI TR 103 511: "SmartM2M; SAREF extension investigation; Requirements for AgriFood domain".
- [i.3] ETSI TS 103 410-4: "SmartM2M; Extension to SAREF; Part 4: Smart Cities Domain".
- [i.4] Verhoosel J. and Spek J.: "[Applying Ontologies in the Dairy Farming Domain for Big Data Analysis](#)". Proceedings of the 1st Semantic Web Technologies for the Internet of Things (SWIT) 2016 workshop, co-located with 15th International Semantic Web Conference (ISWC 2016), Kobe, Japan, October 2016, pg. 91-100, CEUR.
- [i.5] ETSI TR 103 781: "SmartM2M; Study for SAREF ontology patterns and usage guidelines".

3 Definition of terms, symbols and abbreviations

3.1 Terms

For the purposes of the present document, the terms given in ETSI TS 103 673 [3] and the following apply:

ontology: formal specification of a conceptualization, used to explicitly capture the semantics of a certain reality

3.2 Symbols

Void.

3.3 Abbreviations

For the purposes of the present document, the following abbreviations apply:

AEF	Agricultural industry Electronics Foundation
FOAF	Friend of a Friend
GPS	Global Positioning System
ICAR	Global Standard for Livestock Data
IT	Information Technology
NDVI	Normalized Difference Vegetation Index
OM	Ontology of units of Measure
OWL	Web Ontology Language
OWL-DL	Web Ontology Language - Description Logic
RDF	Resource Description Framework
RDF-S	Resource Description Framework Schema
SAREF	Smart Applications REference ontology
SAREF4AGRI	SAREF extension for the Smart Agriculture and Food Chain Domain
SAREF4BLDG	SAREF extension for Buildings
SAREF4CITY	SAREF extension for Smart Cities
SOSA	Sensor Observation Sampling Actuator
SSN	Semantic Sensor Network
STF	Specialists Task Force
TR	Technical Report
TS	Technical Specification

4 SAREF4AGRI ontology and semantics

4.1 Introduction and overview

The present document is a technical specification of SAREF4AGRI, an OWL-DL ontology that extends SAREF [1] for the agricultural domain.

The present document is a major revision of the SAREF4AGRI ontology extension, developed in the context of the STF 641, using updated reference ontology patterns specified in ETSI TS 103 548 [2] to solve the harmonization needs identified in ETSI TR 103 781 [i.5], with updated development framework and tools defined in ETSI TS 103 673 [3]. The present document was originally developed in the context of the STF 534, an ETSI specialists task force that was established with the goal to extend SAREF [1] for the domains of Smart Cities, Smart Industry & Manufacturing, and Smart AgriFood (<https://portal.etsi.org/STF/stfs/STFHomePages/STF534>). The intention of SAREF4AGRI is to connect SAREF with existing ontologies (such as W3C SSN, W3C SOSA, GeoSPARQL, etc.) and important standardization initiatives in the Smart Agriculture and Food Chain domain, including ICAR for livestock data (<https://www.icar.org/>), AEF for agricultural equipment (<http://www.aef-online.org>), Plant Ontology Consortium for plants (<http://archive.plantontology.org>), AgGateway for IT support for arable farming (<http://www.aggateway.org/>), as mentioned in the associated SAREF4AGRI requirements document ETSI TR 103 511 [i.2].

To show the potential of SAREF4AGRI, the present document focuses on two examples, which are the "livestock farming" and "smart irrigation" use cases. Various other examples exist in the Smart Agriculture and Food Chain domain, such as arable farming, horticulture, agricultural equipment, greenhouses and food chain, as mentioned in [i.2] (for an exhaustive list of use cases, see also the H2020 Large Scale Pilot "Internet of Food and Farm 2020 (IoF2020)" at <https://iof2020.eu/trials>). However, it was necessary to make actionable choices within the STF 534 timeframe and the available resources, thus livestock farming and smart irrigation have been chosen as the two initial examples to create SAREF4AGRI. As a next step, it is recommended to further refine the proposed livestock farming and smart irrigation examples to add relevant sensors that are not considered yet, and also consider additional use cases to create new releases of SAREF4AGRI, following and extending the examples provided in the present document. As all the SAREF ontologies, SAREF4AGRI is a dynamic semantic model that is meant to evolve over time. Therefore, the stakeholders in the AgriFood domain (starting from the ICAR, AEF and AgGateway initiatives) are invited to use, validate and provide feedback on SAREF4AGRI, collaborating with the SAREF ontology experts to improve and evolve SAREF4AGRI in an iterative and interactive manner, so that changes and additions can be incorporated in future releases of the present document.

The livestock farming and smart irrigation use cases used as basis to create SAREF4AGRI in the present document are concerned with the integration of multiple data sources for the purpose of providing decision support services located on the local "Farm Management System" of the farmers or provided by a service over the network. Multiple data sources of interest include GPS, meteorological data (both historic and current), remote observation (via satellite sources such as Copernicus) and local observation using near or proximal sensors. As an extension of SAREF, which is a semantic model for IoT that describes smart devices and applications in terms of their functions, services, states and measurements [1], SAREF4AGRI is concerned with the description of proximal sensors that measure a variety of relevant parameters for agriculture, including: (on animal) movement, temperature, etc., (in the soil) moisture/humidity, Ph value, salinity, compaction, (on plant) plant colour (NDVI), etc. The measurements from these sensors need to be integrated by a decision support service to enable the planning of (for example) a treatment plan for animals (in a livestock scenario), or a decision to irrigate or harvest (in an irrigation, horticulture or greenhouse context). The requirements used to create the SAREF4AGRI extension specified in the present document are described in the associated ETSI TR 103 511 [i.2].

The prefixes and namespaces used in SAREF4AGRI and in the present document are listed in Table 1.

Table 1: Prefixes and namespaces used within the SAREF4AGRI ontology

Prefix	Namespace
s4agri	https://saref.etsi.org/saref4agri/
saref	https://saref.etsi.org/core/
dbpedia	http://dbpedia.org/resource/
dcterms	http://purl.org/dc/terms/
owl	http://www.w3.org/2002/07/owl#
om	http://www.wurvoc.org/vocabularies/om-1.8/
rdf	http://www.w3.org/1999/02/22-rdf-syntax-ns#
rdfs	http://www.w3.org/2000/01/rdf-schema#
sosa	http://www.w3.org/ns/sosa/
ssn	http://www.w3.org/ns/ssn/
xsd	http://www.w3.org/2001/XMLSchema#
geo	http://www.opengis.net/ont/geosparql#
foaf	http://xmlns.com/foaf/spec/#
taxrank	http://purl.obolibrary.org/obo/taxrank.owl#
org	https://schema.org/

Diagrams are to be interpreted using the Chowlk notation [3], Clause 9.7.2.

4.2 SAREF4AGRI

4.2.1 Void

4.2.2 Platform, System and Deployment

The main entities in the modelling of platforms, systems and deployments are represented by the `ssn:System` and `ssn:Deployment` classes. Note that the design patterns for modelling these concepts have been taken from the W3C SSN ontology and, as a best practice for reuse, the SAREF4AGRI model refers directly to the URIs of the SSN (<http://www.w3.org/ns/ssn/>) and SOSA (<http://www.w3.org/ns/sosa/>) ontologies.

The `ssn:System` class in the SSN ontology represents a system and its components as specific devices, actuators or sensors. Moreover, the `ssn:Deployment` class from the SSN ontology describes the deployment of one or more systems on a `sosa:Platform` for a particular purpose for a given time period. SAREF4AGRI defines a `saref:Device` as subclass of an `ssn:System` and extends the `ssn:Deployment` class by means of the `s4agri:Deployment` class. In this way, it is possible to represent a specific installation of a certain agricultural system (e.g. a smart irrigation system) in a given space (expressed by means of the property `s4agri:isDeployedAtSpace`) and at a given temporal frame (expressed by means of the property `s4agri:hasDeploymentPeriod`) where SAREF4AGRI devices (e.g. a pluviometer, a soil tensiometer, a weather station, and a watering gun) can be deployed. The deployment can involve a given `sosa:Platform` which hosts the system deployed in such deployment. In order to represent temporal information the TIME ontology has been reused. For the geographical information the GeoSPARQL ontology (<http://www.opengis.net/ont/geosparql#>) is reused.

Table 2 summarizes the properties that characterize the `s4agri:Deployment` class.

Table 2: Properties of Deployment

Property	Definition
<code>s4agri:Deployment ssn:deployedOnPlatform some sosa:Platform</code>	The relation between a deployment and the platform in which it is deployed.
<code>s4agri:Deployment ssn:deployedSystem some ssn:System</code>	The relation between a deployment and the system deployed.
<code>s4agri:Deployment s4agri:hasDeploymentPeriod some time:TemporalEntity</code>	The relation between a deployment and the time span during which the systems are deployed.
<code>s4agri:Deployment s4agri:isDeployedAtSpace some geo:SpatialObject</code>	The relation between a deployment and the spatial area in which the systems are deployed.

4.2.3 Void

4.2.4 Animal, Crop and Soil (Feature of Interest)

The main features of interest in SAREF4AGRI currently support (aspects of) the livestock farming and smart irrigation use cases and are represented by the `s4agri:Animal`, `s4agri:AnimalGroup`, `s4agri:Crop` and `s4agri:Soil` classes that are shown in Figure 1.

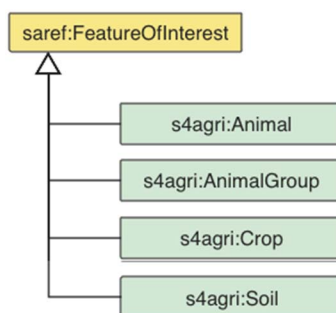


Figure 1: Animal, Crop and Soil

The `s4agri:Animal` class describes an animal that can be classified in SAREF4AGRI reusing the TAXRANK taxonomy vocabulary (<http://purl.obolibrary.org/obo/taxrank.owl#>). Besides the reuse of the TAXRANK taxonomy vocabulary, an animal is furthermore defined in SAREF4AGRI as having a birth and death date. An animal also has a unique identifier and can be part of one or more `s4agri:AnimalGroup` that are used to conduct experiments and observations on the livestock. Note that animals can be also specialized using subclasses, as is shown in the example in clause 4.3.1 with the `ex:LactatingCow` class that was created as a subclass of `s4agri:Animal`. Animals and animal groups are related to measurements via the `saref:FeatureOfInterest` concept of SAREF [1].

The `s4agri:Soil` class represents the upper layer of the earth in which plants grow. The `s4agri:Crop` class describes a collection of homogeneous plant species that is grown on a large scale commercially (especially a cereal, fruit, or vegetable) and is planted on a single location. A `s4agri:Crop` is grown on some `s4agri:Parcel`, which is an area of land, defined in SAREF4AGRI as subclass of the `geo:Feature` (see clause 4.2.6). Moreover, `s4agri:Crop` is related to measurements via `saref:FeatureOfInterest` [1].

Table 3 and Table 4 summarize the definitions of the main classes and properties described above.

Table 3: Animal, Crop and Soil: class definitions

Class	Definition
<code>s4agri:Animal</code>	An individual and identifiable organism that feeds on organic matter, typically having specialized sense organs and nervous system and able to respond rapidly to stimuli. Animals can be further specialized using subclasses, for example, to represent a lactating cow that is a domesticated cow specialized for the production of milk.
<code>s4agri:AnimalGroup</code>	A collection of one or multiple <code>s4agri:Animal</code> .
<code>s4agri:Crop</code>	A collection of cultivated plants that is grown on a large scale commercially, especially a cereal, fruit, or vegetable.
<code>s4agri:Soil</code>	Upper layer of the earth in which plants grow.

Table 4: Animal and Crop: property definitions

Property	Definition
s4agri:Animal	
obo:TAXRANK_1000000 some obo:TAXRANK_0000000	The taxonomic ranking using TAXRANK.
s4agri:hasBirthDate max 1 xsd:dateTimeStamp	The birth date of an animal.
s4agri:hasDeathDate max 1 xsd:dateTimeStamp	The death date of an animal.
saref:hasIdentifier exactly 1 xsd:string	The unique identifier of an animal.
s4agri:isLocatedIn some geo:Feature	The physical location of an animal.
s4agri:isMemberOf some s4agri:AnimalGroup	An animal can be part of groups.
rdfs:label max 1 xsd:string	The name of an animal.
s4agri:AnimalGroup	
s4agri:hasMember some s4agri:Animal	The members of an AnimalGroup.
s4agri:receives some s4agri:Intake	The intake/consumption of an AnimalGroup.
s4agri:generates some s4agri:Yield	The yield generated by an AnimalGroup.
s4agri:isLocatedIn some geo:Feature	The physical location of an AnimalGroup.
rdfs:label max 1 xsd:string	The name of an AnimalGroup.
s4agri:Crop	
obo:TAXRANK_1000000 some obo:TAXRANK_0000000	The taxonomic ranking using TAXRANK.
s4agri:receives some s4agri:Intake	The intake/consumption of certain substances in a Crop.
s4agri:generates some s4agri:Yield	The yield generated by a Crop.
s4agri:hasPlantDate some xsd:dateTimeStamp	The day the crop is planted.
s4agri:hasHarvestDate some xsd:dateTimeStamp	The day the crop is harvested.
s4agri:Parcel	
s4agri:contains some s4agri:Crop	A parcel can contain some crops.
rdfs:label max 1 xsd:string	The name of a parcel.

4.2.5 Device

SAREF4AGRI extends the device hierarchy defined in SAREF in order to include devices needed to support the livestock farming and the smart irrigation use cases. These devices are shown in Figure 2. The devices included for the Smart Irrigation use case are: `s4agri:Pluviometer`, `s4agri:SoilTensiometer`, `s4agri:WeatherStation`, and `s4agri:WateringGun`. The devices included for the Livestock Farming use case are: `s4agri:MovementActivitySensor`, `EatingActivitySensor`, `s4agri:MilkingSensor`, and `s4agri:WeightSensor`.

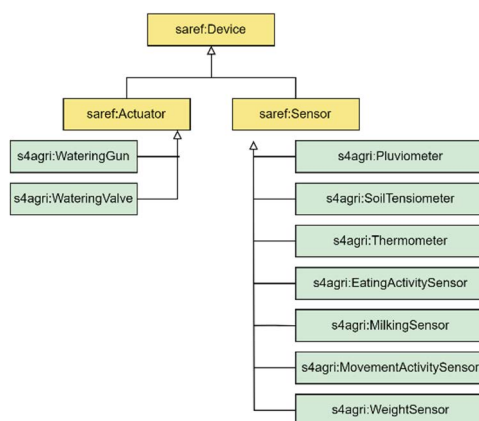


Figure 2: Device hierarchy

4.2.6 Property

SAREF4AGRI extends the property hierarchy defined in SAREF in order to include properties needed to support the livestock farming and the smart irrigation use cases. These devices are shown in Figure 3.

The properties included for the smart irrigation use case are: `s4agri:SoilMoisture`, `s4agri:IrrigationWater`, `s4agri:SoilTemperature`, `s4agri:AirTemperature`, `s4agri:AmbientHumidity`, `s4agri:Precipitation`, and `s4agri:PlantGrowthStage`.

The properties included for the livestock farming use case are: `s4agri:Yield` (which can further be specialized in subclasses, such as `MilkYield`, `CropYield`, `MeatYield`, `MilkYield`, etc. as needed) and `s4agri:Intake` (which can further be specialized in subclasses, such as `FoodIntake` for animals, `FertilizerIntake` for crops, etc. as needed).

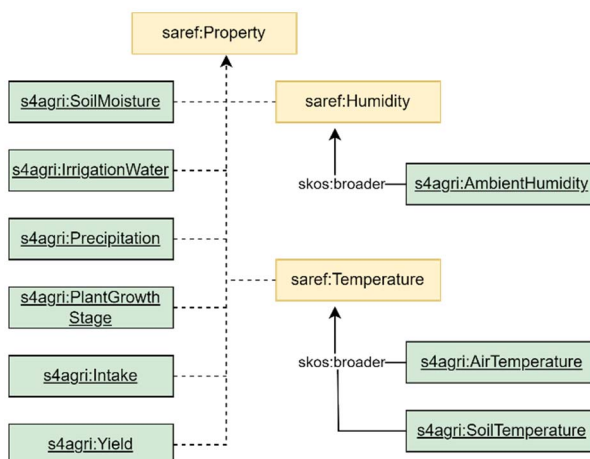


Figure 3: Property hierarchy

Table 5 summarizes the definitions of the classes described above.

Table 5: Intake and Yield: class definitions

Class	Definition
<code>s4agri:Intake</code>	The amount of food or other substance taken into the body of an animal or into the soil.
<code>s4agri:Yield</code>	The produced amount of food for animals or of agricultural products.
<code>s4agri:SoilMoisture</code>	The amount of water or humidity contained in the soil.
<code>s4agri:IrrigationWater</code>	The amount of water falling in the soil by irrigation methods.
<code>s4agri:Precipitation</code>	The amount of water falling in the soil by natural process (e.g. rain).
<code>s4agri:PlantGrowthStage</code>	The level or stage of growth of the plant.
<code>s4agri:AmbientHumidity</code>	The amount of water vapour in the air.
<code>s4agri:AirTemperature</code>	The degree or intensity of heat present in the air.
<code>s4agri:SoilTemperature</code>	The degree or intensity of heat present in the soil.

4.2.7 Topology

SAREF4AGRI adopts the same topology modelling pattern that is adopted in the SAREF4CITY extension [i.3], where existing standard ontologies have been reused for this purpose. As shown in Figure 4, for representing spatial objects in SAREF4AGRI, the `geo:SpatialObject` class from GeoSPARQL has been reused along with its subclasses `geo:Feature`, `geo:Geometry` and the properties `geo:sfContains`, `geo:sfWithin` and `geo:hasGeometry`.

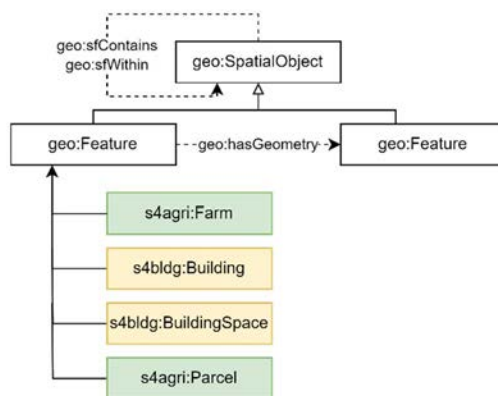


Figure 4: Topology model

For the purpose of SAREF4AGRI, the `geo:Feature` class has been extended with the following subclasses:

- the `s4agri:Farm`
- the `s4bldg:Building`
- the `s4bldg:BuildingSpace`
- the `s4agri:Parcel`

A `s4agri:Farm` can contain one or more `s4bldg:Building` and `s4agri:Parcel` (via the `geo:sfContains` relation). Note that these types of feature are used in the present document as examples, but more feature types (and building types) can be added as needed. Moreover, a `s4bldg:Building` can be further decomposed in one or more `s4bldg:BuildingSpace` individuals (once again via the `geo:sfContains` relation). As subclasses of `geo:Feature`, all the classes mentioned above inherit the possibility to have a physical geometric description using `geo:Geometry`, if needed (e.g. especially relevant for `s4agri:Parcel`).

4.2.8 Person and Organization

The SAREF4AGRI extension reuses the FOAF vocabulary (<http://xmlns.com/foaf/0.1/>) to represent the concepts of Person and Organization. Figure 5 shows that in SAREF4AGRI the `foaf:Person` and `foaf:Organization` classes are extended with the `s4agri:Farmer` and `s4agri:FarmHolding` subclasses to describe farmers and their organizations, respectively. Both `foaf:Person` and `foaf:Organization` are subclass of `foaf:Agent`. Organizations (e.g. `s4agri:FarmHolding`) have members (e.g. farmers). Both `s4agri:Farmer` and `s4agri:FarmHolding` can manage some `s4agri:Farm`.

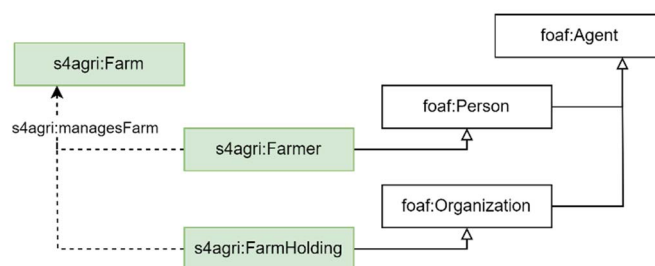


Figure 5: Person and Organization model

4.3 Instantiating SAREF4AGRI

4.3.1 Livestock farming

This clause shows an example of how to instantiate the SAREF4AGRI extension of SAREF for the livestock farming use case. The example describes a family company owned farm that grows certain crops and owns lactating cows. Various sensors are used in the farm to monitor animals and crops.

The first part of the example is related to the organizational aspects of the farm and is shown in Figure 6.

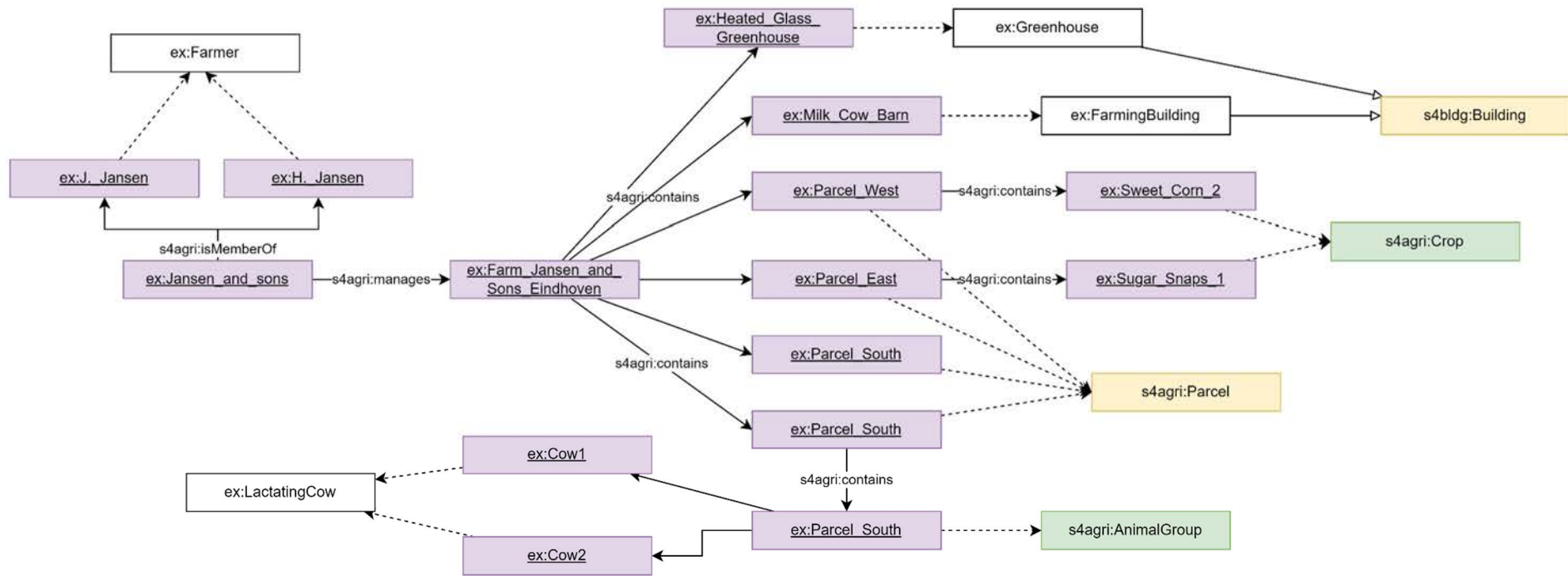


Figure 6: Farm example

Figure 6 shows two instances of a farmer, namely `ex:H._Jansen` and `ex:J._Jansen`, which are both members of the `s4agri:FarmHolding` `ex:Jansen_and_Sons`. The organization manages the `s4agri:Farm` `ex:Farm_Jansen_and_Son_Eindhoven`.

Note that the `s4agri:Farm` is a subclass of `geo:Feature`, which enables the description of the exact geometrical aspects of the area. Moreover, `ex:Farm_Jansen_and_Son_Eindhoven` contains the following additional instances of type `geo:Feature`:

- four `s4agri:Parcel` individuals: `ex:Parcel_South`, `ex:Parcel_West`, `ex:Parcel_North`, and `ex:Parcel_East`
- two `s4bldg:Building` individuals: `ex:Milk_Cow_Barn`, `ex:Heated_Glass_Greenhouse`

Furthermore, the figure shows that `ex:Parcel_East` and `ex:Parcel_West` both contain some `s4agri:Crop` (`ex:Sweet_Corn_1` and `ex:Sweet_Corn_2`, respectively). Additionally, `ex:Parcel_North` contains the `s4agri:AnimalGroup` individual `ex:Cow_Group_A`, which consists of the `s4agri:Animal` individuals `ex:Cow1` and `ex:Cow2`. Finally, Figure 6 shows that `ex:Parcel_South` does not contain anything.

Figure 7 elaborates on `ex:Parcel_North` that contains the `ex:Cow_Group_A` with two cows (i.e. `ex:Cow1` and `ex:Cow2`) which are similarly taxonomically described using the TAXRANK taxonomy vocabulary. The `ex:Cow_Group_A` generates `s4agri:MilkYield`, which is a type of `s4agri:Yield` and consequently a `saref:Property`. The example contains one instance of `s4agri:Milk_Yield` that represents the outcome of the milking procedure of a certain cow. The `s4agri:Milk_Yield` instance is measured in `om:Liter` by the `ex:MilkYieldSensor`. The `ex:MilkYieldSensor` is of type `s4agri:MilkingSensor`, which is a `saref:Sensor`, and thus a `saref:Device`. Figure 7 further shows that the sensor is contained in an `ex:Milking_Machine`, which is a `saref:Device`, and the `ex:Milking_Machine` has a sensor that measures the yield. The measurements are directly linked to the sensor, instead of to the milk machine itself, because a large machine can have multiple sensors.

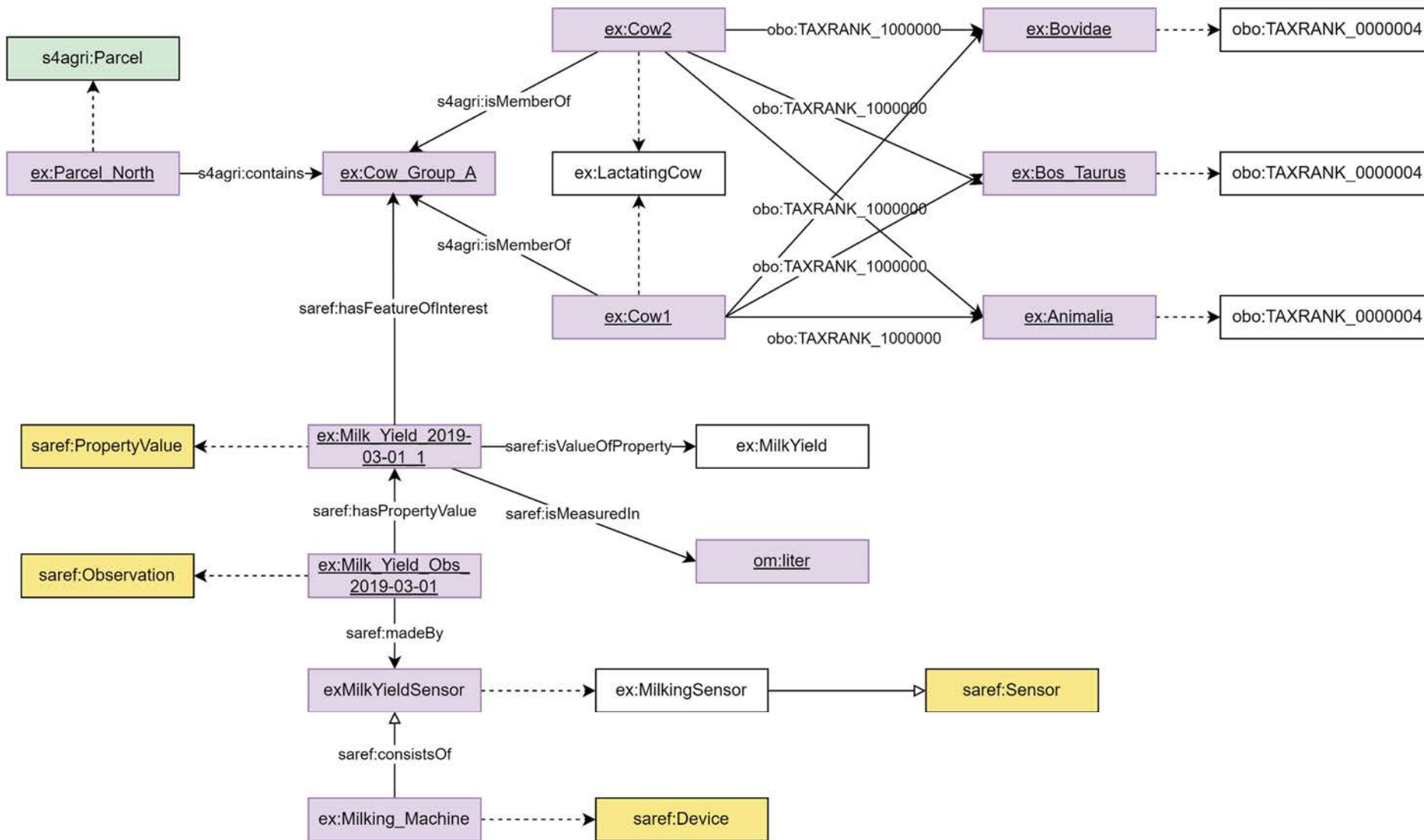


Figure 7: Cow, milking sensor and measurement example

Figure 8 further shows an example of another `s4agri:AnimalGroup`, namely `ex:Cow_Group_B`. This `s4agri:AnimalGroup` only contains a single cow, `ex:Cow3`, whose eating activity is being monitored by `ex:Cow_Eating_Activity_Sensor_33`. This `s4agri:EatingActivitySensor` made two measurements about the cow eating activity.

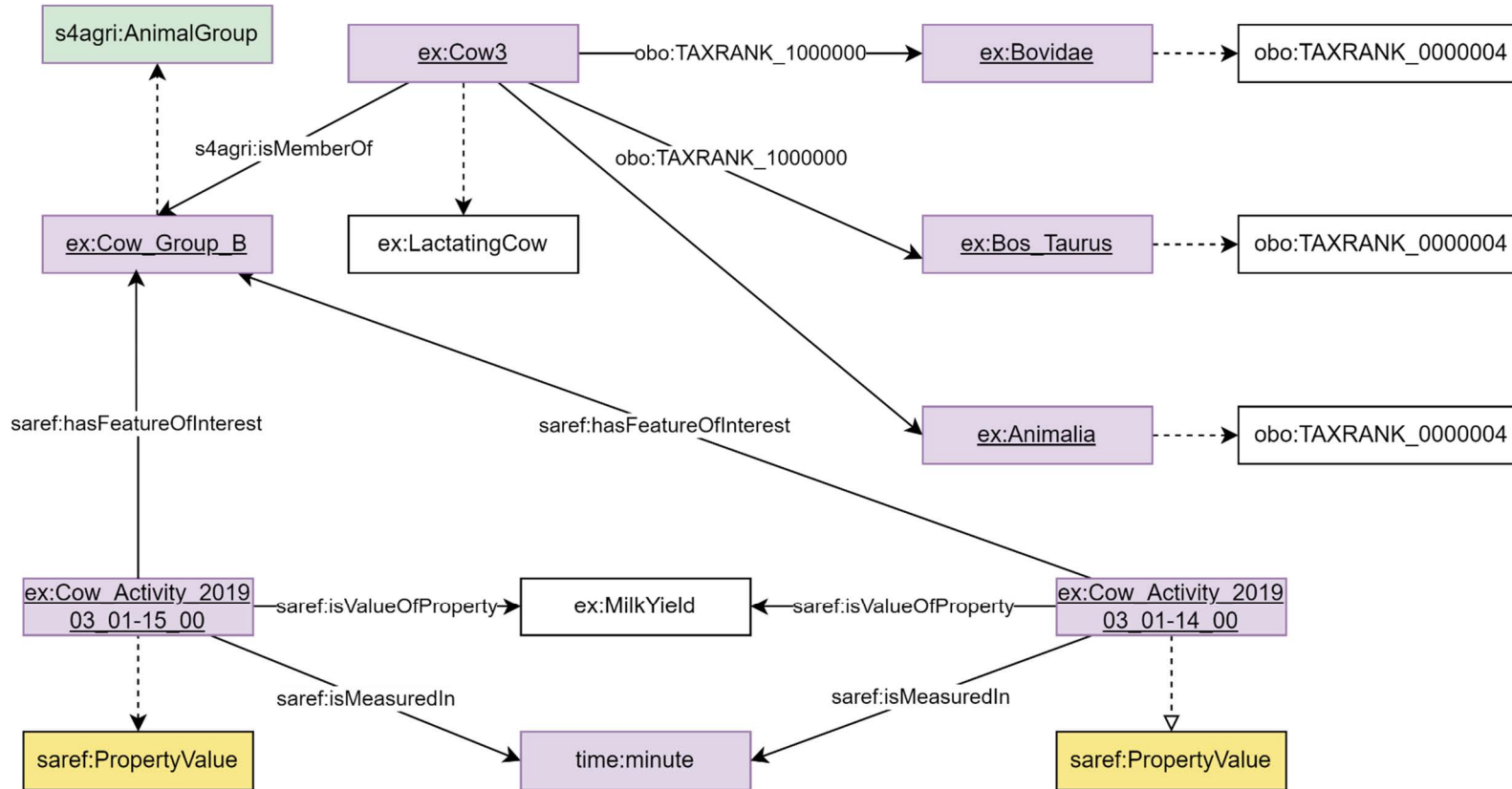


Figure 8: Cow, eating activity sensor and measurement example

4.3.2 Smart Irrigation

This clause shows an example of how to instantiate the SAREF4AGRI extension of SAREF to represent the deployment of some sensors and an example of measurement for the smart irrigation use case. This example is shown in Figure 9.

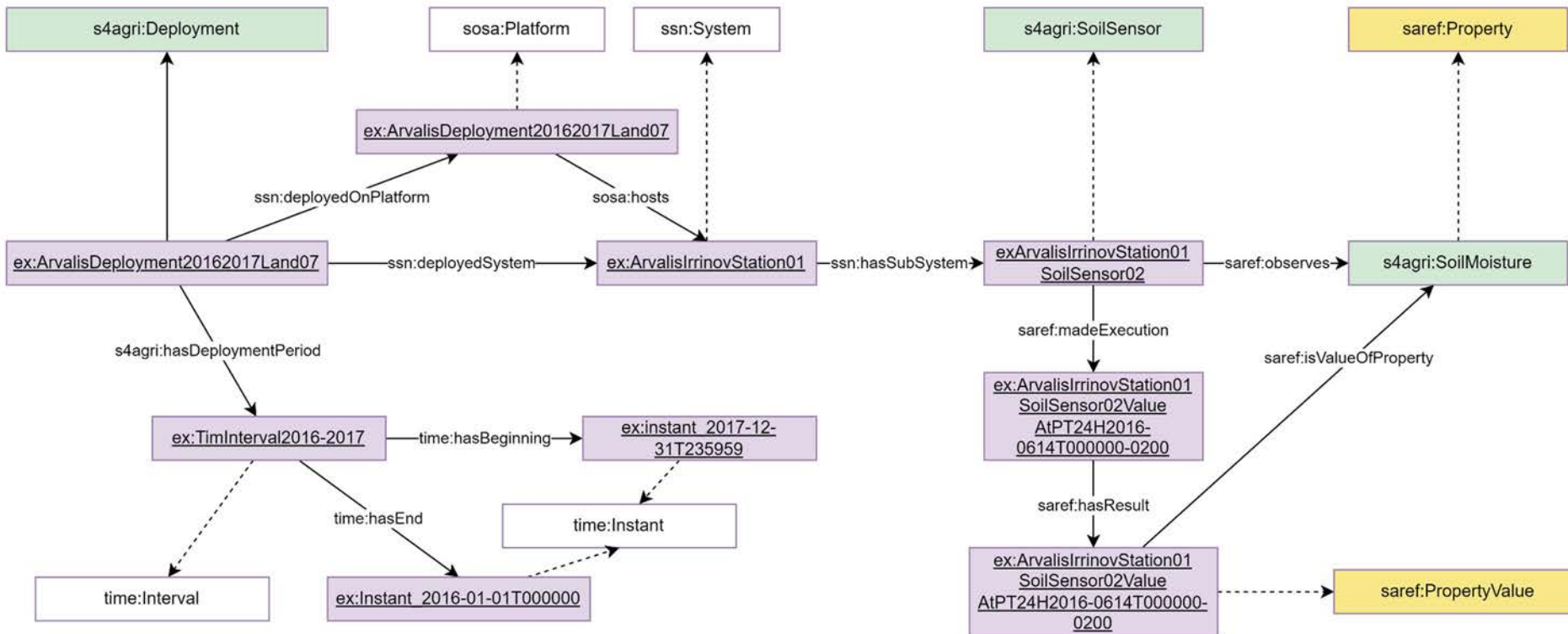


Figure 9: Smart Irrigation example

The `ex:ArvalisDeployment20162017Land07` deployment is deployed in the `ex:PlatformArvalisLand07` platform and has a deployed system, namely the smart irrigation station `ex:ArvalisIrrinovStation01`. The deployment takes place in the time interval between January 2016 and the end of 2017, defined as `ex:TimeInterval2016-2017`.

The deployed system, `ex:ArvalisIrrinovStation01`, is composed of two sensors identified by the URIs `ex:ArvalisIrrinovStation01SoilSensor01` and `ex:ArvalisIrrinovStation01SoilSensor02` which are linked from the system by the property `ssn:hasSubSystem`. Both sensors are of the type `ex:SoilTensiometer`. Both sensors measure (`saref:observes`) the soil moisture property (`s4agri:SoilMoisture`).

A measurement taken by the `ex:ArvalisIrrinovStation01SoilSensor02` sensor is also depicted, namely the measurement `ex:ArvalisIrrinovStation01SoilSensor02ObservationAtPT24H2016-06-14T000000_0200`. This measurement is about (`saref:isValueOfProperty`) the soil moisture property (`s4agri:SoilMoisture`). This measurement has a value of 1 490,0 expressed in millibars (`om:millibar`).

Annex A (informative): Approach

To create the SAREF4AGRI extension specified in the present document, a combination of bottom-up and top-down approaches was followed. First, the SAREF4AGRI extension has been developed bottom-up from a set of requirements extracted from the livestock farming and smart irrigation examples (also considering existing ontologies in the sector, such as the Common Dairy Ontology in [i.4]). Note that although various other examples exist in the AgriFood sector (such as arable farming, horticulture, agricultural equipment, greenhouses, food chain, etc.), it was necessary to make actionable choices within the STF 534 timeframe and the available resources, therefore livestock farming and smart irrigation have been chosen as the two initial examples to create SAREF4AGRI.

As a second step, following a top-down approach, the SAREF4AGRI extension development has been driven by reuse in order to connect SAREF with already existing ontologies (such as SOSA, SSN, FOAF, Schema.org, GeoSPARQL, and WGS84).

Afterwards, following the process defined in [i.1], the ontological engineers with the support of domain experts considered existing AgriFood standards (e.g. ICAR, ISOBUS, etc.) and vocabularies (e.g. TAXRANK). A list of the considered standards is detailed in [i.2]. Finally, an initial version of the ontological requirements for SAREF4AGRI was proposed, which was then refined together with domain experts in order to obtain a stable version of the requirements and create SAREF4AGRI.

The following classes and properties have been directly reused from FOAF:

- foaf:Agent
- foaf:Person
- foaf:member
- foaf:Organization

The following classes and properties have been directly reused from GeoSPARQL:

- geo:SpatialObject
- geo:Feature
- geo:Geometry
- geo:sfContains

The following classes and properties have been directly reused from SOSA:

- sosa:Platform

The following classes and properties have been directly reused from SSN:

- ssn:System
- ssn:deployedOnPlatform
- ssn:deployedSystem
- ssn:Deployment

Finally, the Time ontology (<http://www.w3.org/2006/time>), which is already reused by SAREF, has also been reused in SAREF4AGRI.

As a next step, it is recommended to further refine the livestock farming and smart irrigation examples to add relevant sensors that are not considered yet, and also consider additional use cases to create new releases of SAREF4AGRI, following and extending the examples provided in the present document. As all the SAREF ontologies, SAREF4AGRI is a dynamic semantic model that is meant to evolve over time. Therefore, the stakeholders in the AgriFood domain (starting from the ICAR, AEF and AgGateway initiatives) are invited to use, validate and provide feedback on SAREF4AGRI, collaborating with the SAREF ontology experts to improve and evolve SAREF4AGRI in an iterative and interactive manner, so that changes and additions can be incorporated in future releases of the present document.

Annex B (informative): Bibliography

- ETSI TS 103 267 (V2.1.1) (2020-02): "SmartM2M; Smart Applications; Communication Framework".
- ETSI TS 102 689 (V1.1.1) (2010-08): "Machine-to-Machine communications (M2M); M2M Service Requirements".

History

Document history		
V1.1.1	May 2019	Publication
V1.1.2	May 2020	Publication
V2.1.1	October 2024	Publication