

ETSI TS 102 256 V1.1.1 (2003-08)

Technical Specification

Private Integrated Services Network (PISN); Specification, functional model and information flows; Make Call Request supplementary service



Reference

DTS/ECMA-00231

Keywords

PISN, stage 1, stage 2, supplementary service

ETSI

650 Route des Lucioles
F-06921 Sophia Antipolis Cedex - FRANCE

Tel.: +33 4 92 94 42 00 Fax: +33 4 93 65 47 16

Siret N° 348 623 562 00017 - NAF 742 C
Association à but non lucratif enregistrée à la
Sous-Préfecture de Grasse (06) N° 7803/88

Important notice

Individual copies of the present document can be downloaded from:

<http://www.etsi.org>

The present document may be made available in more than one electronic version or in print. In any case of existing or perceived difference in contents between such versions, the reference version is the Portable Document Format (PDF). In case of dispute, the reference shall be the printing on ETSI printers of the PDF version kept on a specific network drive within ETSI Secretariat.

Users of the present document should be aware that the document may be subject to revision or change of status. Information on the current status of this and other ETSI documents is available at

<http://portal.etsi.org/tb/status/status.asp>

If you find errors in the present document, send your comment to:

editor@etsi.org

Copyright Notification

No part may be reproduced except as authorized by written permission.
The copyright and the foregoing restriction extend to reproduction in all media.

© European Telecommunications Standards Institute 2003.
All rights reserved.

DECTTM, **PLUGTESTS**TM and **UMTS**TM are Trade Marks of ETSI registered for the benefit of its Members.
TIPHONTM and the **TIPHON logo** are Trade Marks currently being registered by ETSI for the benefit of its Members.
3GPPTM is a Trade Mark of ETSI registered for the benefit of its Members and of the 3GPP Organizational Partners.

Contents

Intellectual Property Rights	5
Foreword.....	5
Brief History	5
1 Scope	6
2 Conformance	6
3 References (normative)	6
4 Definitions	7
4.1 External definitions	7
4.2 Other definitions	7
4.2.1 Co-operating User	7
4.2.2 Destination User	7
4.2.3 Make Call Request	7
4.2.4 Original Call	7
4.2.5 Requested Call	7
4.2.6 Requesting User	8
5 List of acronyms	8
6 SS-MCR stage 1 specification.....	9
6.1 Description	9
6.1.1 General description	9
6.1.2 Qualifications on applicability to telecommunication services.....	9
6.2 Procedures	9
6.2.1 Provision / withdrawal	9
6.2.2 Normal procedures.....	9
6.2.2.1 Activation, deactivation and interrogation	9
6.2.2.2 Invocation and operation	9
6.2.3 Exceptional procedures	10
6.2.3.1 Activation, deactivation and interrogation	10
6.2.3.2 Invocation and operation	10
6.3 Interactions with other Supplementary Services / Additional Network Features	10
6.3.1 Calling Line Identification Presentation (SS-CLIP)	10
6.3.2 Connected Line Identification Presentation (SS-COLP)	10
6.3.3 Calling/Connected Line Identification Restriction (SS-CLIR).....	10
6.3.4 Calling Name Identification Presentation (SS-CNIP).....	10
6.3.5 Calling/Connected Name Identification Restriction (SS-CNIR)	10
6.3.6 Connected Name Identification Presentation (SS-CONP).....	11
6.3.7 Call Forwarding Unconditional (SS-CFU)	11
6.3.8 Call Forwarding Busy (SS-CFB)	11
6.3.9 Call Forwarding No Reply (SS-CFNR)	11
6.3.10 Call Deflection (SS-CD).....	11
6.3.11 Path Replacement (ANF-PR).....	11
6.3.12 Call Transfer (SS-CT).....	11
6.3.13 Completion of Calls to Busy Subscribers (SS-CCBS).....	11
6.3.14 Completion of Calls on No Reply (SS-CCNR).....	11
6.3.15 Call Offer (SS-CO)	11
6.3.16 Do Not Disturb (SS-DND)	12
6.3.17 Do Not Disturb Override (SS-DNDO).....	12
6.3.18 Call Intrusion (SS-CI).....	12
6.3.19 Advice of Charge (SS-AOC)	12
6.3.20 Recall (SS-RE).....	12
6.3.21 Call Interception (SS-CINT).....	12
6.3.22 Transit Counter (ANF-TC)	12
6.3.23 Route Restriction Class (ANF-RRC).....	12

6.3.24	Message Waiting Indication (SS-MWI)	12
6.3.25	Wireless Terminal Location Registration (SS-WTLR).....	12
6.3.26	Wireless Terminal Incoming Call (SS-WTMI).....	12
6.3.27	Wireless Terminal Outgoing Call (SS-WTMO).....	12
6.3.28	Wireless Terminal Authentication of a WTM User (SS-WTAT)	12
6.3.29	Wireless Terminal Authentication of the PISN (SS-WTAN)	13
6.3.30	Common Information (SS-CMN).....	13
6.3.31	Call Priority Interruption (Protection) (SS-CPI(P))	13
6.3.32	Private User Mobility Incoming Call (ANF-PUMI).....	13
6.3.33	Private User Mobility Outgoing Call (ANF-PUMO).....	13
6.3.34	Private User Mobility Registration (SS-PUMR).....	13
6.3.35	Single Step Call Transfer (SS-SSCT)	13
6.3.36	Simple Dialog (SS-SD).....	13
6.3.37	Call Identification and Call Linkage (ANF-CIDL).....	13
6.3.38	Short Message Service (SS-SMS)	13
6.3.39	Message Centre Monitoring (SS-MCM).....	13
6.3.40	Mailbox Identification (SS-MID)	13
6.4	Interworking considerations	13
6.5	Overall SDL	14
7	SS-MCR stage 2 specification.....	16
7.1	Functional model.....	16
7.1.1	Functional model description.....	16
7.1.2	Description of Functional Entities	16
7.1.2.1	Requesting User's User Agent, FE1	16
7.1.2.2	Requesting User's Control entity, FE2	17
7.1.2.3	Co-operating User's Control entity, FE3	17
7.1.2.4	Co-operating User's User Agent, FE4	17
7.1.2.5	Destination User's Control entity, FE5	17
7.1.2.6	Destination User's User Agent, FE6.....	17
7.2	Information flows	18
7.2.1	Definition of information flows	18
7.2.1.1	MCR_CallRequest	18
7.2.1.2	MCR_PromptCoop	18
7.2.1.3	MCR_Inform.....	19
7.2.1.4	MCR_Alerting	19
7.2.2	Relationship of information flows to Basic Call information flows	19
7.2.3	Information flow sequences.....	19
7.2.3.1	Make Call Request procedures of SS-MCR.....	20
7.3	Functional Entity actions.....	20
7.3.1	Functional Entity actions of FE1	20
7.3.2	Functional Entity actions of FE2	20
7.3.3	Functional Entity actions of FE3	21
7.3.4	Functional Entity actions of FE4	21
7.3.5	Functional Entity actions of FE5	21
7.3.6	Functional Entity actions of FE6	21
7.4	Functional Entity behaviour	21
7.4.1	Behaviour of FE1.....	22
7.4.2	Behaviour of FE2.....	23
7.4.3	Behaviour of FE3.....	24
7.4.4	Behaviour of FE4.....	25
7.4.5	Behaviour of FE5.....	25
7.4.6	Behaviour of FE6.....	26
7.5	Allocation of Functional Entities to physical equipment.....	26
7.6	Interworking considerations	27
History	28

Intellectual Property Rights

IPRs essential or potentially essential to the present document may have been declared to ETSI. The information pertaining to these essential IPRs, if any, is publicly available for **ETSI members and non-members**, and can be found in ETSI SR 000 314: "*Intellectual Property Rights (IPRs); Essential, or potentially Essential, IPRs notified to ETSI in respect of ETSI standards*", which is available from the ETSI Secretariat. Latest updates are available on the ETSI Web server (<http://webapp.etsi.org/IPR/home.asp>).

Pursuant to the ETSI IPR Policy, no investigation, including IPR searches, has been carried out by ETSI. No guarantee can be given as to the existence of other IPRs not referenced in ETSI SR 000 314 (or the updates on the ETSI Web server) which are, or may be, or may become, essential to the present document.

Foreword

This Technical Specification (TS) has been produced by ECMA on behalf of its members and those of the European Telecommunications Standards Institute (ETSI).

Brief History

The present document is one of a series of ECMA Standards defining services and signalling protocols applicable to Private Integrated Services Networks (PISNs). The series uses ISDN concepts as developed by ITU-T and conforms to the framework of International Standards for Open Systems Interconnection as defined by ISO/IEC. It has been produced under ETSI work item DTS/ECMA-00231.

The present document specifies the Make Call Request supplementary service.

The present document is based upon the practical experience of ECMA member companies and the results of their active and continuous participation in the work of ISO/IEC JTC1, ITU-T, ETSI and other international and national standardization bodies. It represents a pragmatic and widely based consensus.

1 Scope

The present document specifies Supplementary Service Make Call Request (SS-MCR), which is related, but not limited, to various basic services supported by Private Integrated Services Networks (PISNs). Basic services are specified in ECMA-142 [2].

The supplementary service MCR enables a Requesting User to request a Co-operating User to establish a new Requested Call to a Destination User. This new Requested Call between the Co-operating and Destination User can be either a Basic call or call independent signalling connection.

Service specifications are produced in three stages, according to the method described in ETS 300 387 [4]. The present document contains the stage 1 and stage 2 specifications of SS-MCR. The stage 1 specification (clause 6) specifies the supplementary service as seen by users of PISNs. The stage 2 specification (clause 7) specifies the functional entities involved in the supplementary service and the information flows between them.

2 Conformance

In order to conform to the present document, a stage 3 standard shall specify signalling protocols and equipment behaviour that are capable of being used in a PISN which supports the supplementary service specified in the present document. This means that, to claim conformance, a stage 3 standard is required to be adequate for the support of those aspects of clause 6 (stage 1) and clause 7 (stage 2) which are relevant to the interface or equipment to which the stage 3 standard applies.

3 References (normative)

The following standards contain provisions, which, through reference in this text, constitute provisions of the present document. All standards are subject to revision, and parties to agreements based on the present document are encouraged to investigate the possibility of applying the most recent editions of the standards indicated below.

In the case of references to ECMA Standards that are aligned with ISO/IEC International Standards, the number of the appropriate ISO/IEC International Standard is given in brackets after the ECMA reference.

- [1] ECMA-133: "Private Integrated Services Network (PISN) - Reference Configuration for PISN Exchanges (PINX) (International Standard ISO/IEC 11579-1)".
- [2] ECMA-142: "Private Integrated Services Network (PISN) - Circuit Mode 64kbit/s Bearer Services - Service Description, Functional Capabilities and Information Flows (BCSD) (International Standard ISO/IEC 11574)".
- [3] ECMA-165: "Private Integrated Services Network (PISN) - Generic Functional Protocol for the Support of Supplementary Services - Inter-Exchange Signalling Procedures and Protocol (QSIG-GF) (International Standard ISO/IEC 11582)".
- [4] ETSI ETS 300 387: "Private Telecommunication Network (PTN); Method for the specification of basic and supplementary services".
- [5] ITU-T Recommendation I.112: "Vocabulary of terms for ISDNs".
- [6] ITU-T Recommendation I.210: "Principles of telecommunication services supported by an ISDN and the means to describe them".
- [7] ITU-T Recommendation Z.100: "Specification and Description Language (SDL)".

4 Definitions

For the purposes of the present document, the following terms and definitions apply.

4.1 External definitions

For the purposes of the present document the following terms and definitions given in other documents apply:

basic service: See ECMA-142 [2].

call, basic call: See ECMA-165 [3].

Call Independent Signalling Connection (CISC): See ECMA-165 [3].

call independent: See ECMA-165 [3].

call related: See ECMA-165 [3].

Private Integrated services Network eXchange (PINX): See ECMA-133 [1].

Private Integrated Services Network (PISN): See ECMA-133 [1].

service: See ITU-T Recommendation I.112 [5].

signalling: See ITU-T Recommendation I.112 [5].

Supplementary Service (SS): See ITU-T Recommendation I.210 [6].

user: See ECMA-142 [2].

4.2 Other definitions

4.2.1 Co-operating User

The user who receives a Make Call Request and who shall set up a new Requested Call to the Destination User.

4.2.2 Destination User

The called user of the Requested Call i.e. the user to whom the Co-operating User shall establish a Requested Call.

4.2.3 Make Call Request

A request from the Requesting User for a new call (i.e. Requested Call) between a Co-operating User and a Destination User.

4.2.4 Original Call

The call between the Requesting User and the Co-operating User. The Original Call can be either a Basic call or a call independent signalling connection and is correlated with the Requested Call.

4.2.5 Requested Call

The call between the Co-operating User and the Destination User that is established by the Co-operating User due to a Make Call Request from the Requesting User. The Requested Call can either be a Basic call (with a specific Basic Service) or a call independent signalling connection and is correlated with the Original Call.

4.2.6 Requesting User

The User who sends a Make Call Request to the Co-operating User with the request to establish a specific Requested Call to the Destination User.

5 List of acronyms

For the purposes of the present document the following acronyms apply:

ANF	Additional Network Feature
ANF-PR	Path Replacement
ANF-PUMI	Private User Mobility Incoming Call
ANF-PUMO	Private User Mobility Outgoing Call
ANF-RRC	Route Restriction Class
ANF-TC	Transit Counter
CISC	Call Independent Signalling Connection
FE	Functional Entity
ISDN	Integrated Services Digital Network
MC	Message Centre
MCR	Make Call Request
PINX	Private Integrated services Network eXchange
PISN	Private Integrated Services Network
SDL	Specification and Description Language
SS	Supplementary Service
SS-AOC	Advice of Charge
SS-CCBS	Completion of Calls to Busy Subscribers
SS-CCNR	Completion of Calls on No Reply
SS-CD	Call Deflection
SS-CFB	Call Forwarding Busy
SS-CFNR	Call Forwarding No Reply
SS-CFU	Call Forwarding Unconditional
SS-CI	Call Intrusion
SS-CINT	Call INTerception
SS-CLIP	Calling Line Identification Presentation
SS-CLIR	Calling/Connected Line Identification Restriction
SS-CMN	Common Information
SS-CNIP	Calling Name Identification Presentation
SS-CNIR	Calling/Connected Name Identification Restriction
SS-CO	Call Offer
SS-COLP	Connected Line Identification Presentation
SS-CONP	Connected Name Identification Presentation
SS-CPI(P)	Call Priority Interruption (Protection)
SS-CT	Call Transfer
SS-DND	Do Not Disturb
SS-DNDO	Do Not Disturb Override
SS-MCM	Message Centre Monitoring
SS-MID	Mailbox Identification
SS-MWI	Message Waiting Indication
SS-PUMR	Private User Mobility Registration
SS-RE	REcall
SS-SD	Simple Dialog
SS-SMS	Short Message Service
SS-SSCT	Single Step Call Transfer
SS-WTAN	Wireless Terminal Authentication of the PISN
SS-WTAT	Wireless Terminal Authentication of a WTM User
SS-WTLR	Wireless Terminal Location Registration
SS-WTMI	Wireless Terminal Incoming Call
SS-WTMO	Wireless Terminal Outgoing Call

6 SS-MCR stage 1 specification

6.1 Description

6.1.1 General description

The supplementary service MCR enables a Requesting User to request a Co-operating User to establish a new Requested Call to a Destination User. This new Requested Call between the Co-operating User and the Destination User can either be a Basic call or a call independent signalling connection. The new Requested Call shall be correlated to the Original Call between the Requesting User and the Co-operating User.

6.1.2 Qualifications on applicability to telecommunication services

This supplementary service is applicable to all basic telecommunication services.

6.2 Procedures

6.2.1 Provision / withdrawal

SS-MCR may be provided or withdrawn after pre-arrangement with the service provider or may be generally available to all users.

6.2.2 Normal procedures

6.2.2.1 Activation, deactivation and interrogation

Not applicable.

6.2.2.2 Invocation and operation

A Requesting User may use SS-MCR to request the set up of a new Requested Call between a Co-operating User and a Destination User.

NOTE: The Requesting User and the Destination User can be the same user (e.g. Requesting/Destination User is a Message Centre).

To invoke SS-MCR the Requesting User may use, if available, an existing signalling connection (either call-related or call-independent) with the Co-operating User, otherwise the Requesting User shall establish a call independent signalling connection to the Co-operating User in order to convey the following information:

- address information of the Destination User (e.g. Party Number);
- optionally, number information of the Co-operating User (e.g. Party Number);
- optionally, number information of the Requesting User (e.g. Party Number);
- an indication for a Basic Service, if a Basic call is requested, otherwise an indication for a call independent signalling connection;
- a correlation ID for the Original Call and the Requested Call;
- an indication whether to retain the Original Call after successful establishment of the Requested Call.

If the entity serving the Co-operating User supports SS-MCR, this entity may check whether the Requesting User is allowed to invoke SS-MCR and if a call independent signalling connection or a Basic call with the indicated Bearer Service can be established. Afterwards, the Co-operating User may be informed about the SS-MCR request. The

Requested Call shall be either a Basic call with the requested Basic Service or a call independent signalling connection, due to the received request. Additionally the following information shall be sent to the Destination User:

- address information of the Requesting User and Co-operating User (i.e. Party Number of the Requesting User) if received;
- a correlation ID for the Original Call and the Requested Call.

If the Requested Call is successfully established, an appropriate indication shall be sent to the Requesting User. The Original Call shall be retained or cleared immediately after successful establishment of the Requested Call dependent on the corresponding indication received in the initial Make Call Request from the Requesting User. The Co-operating User is responsible for clearing of the Requested Call. In case of retention of the Original Call the Requesting User is responsible for clearing of the Original Call to the Co-operating User.

6.2.3 Exceptional procedures

6.2.3.1 Activation, deactivation and interrogation

Not applicable.

6.2.3.2 Invocation and operation

If the entity serving the Co-operating User does not support SS-MCR or if the validation of the request from the Requesting user fails or a call independent signalling connection or a Basic call with the indicated Basic Service cannot be established, an appropriate error indication shall be sent to the Requesting User. The Requesting User is responsible for clearing of the Original Call.

If the Co-operating User is busy when SS-MCR is invoked, an appropriate error indication shall be sent to the Requesting User. The Requesting User is responsible for clearing the Original Call.

6.3 Interactions with other Supplementary Services / Additional Network Features

Interactions with other supplementary services and ANFs for which PISN standards were available at the time of publication of the present document are specified below.

6.3.1 Calling Line Identification Presentation (SS-CLIP)

No interaction.

6.3.2 Connected Line Identification Presentation (SS-COLP)

No interaction.

6.3.3 Calling/Connected Line Identification Restriction (SS-CLIR)

No interaction.

6.3.4 Calling Name Identification Presentation (SS-CNIP)

No interaction.

6.3.5 Calling/Connected Name Identification Restriction (SS-CNIR)

No interaction.

6.3.6 Connected Name Identification Presentation (SS-CONP)

No interaction.

6.3.7 Call Forwarding Unconditional (SS-CFU)

If the Co-operating User has activated SS-CFU, the request to set up a new Requested Call shall not be forwarded. It is an implementation option for the entity serving the Co-operating User to either provide SS-MCR or to send an error indication towards the Requesting User.

SS-CFU, activated at the Destination User, is not affected by SS-MCR, i.e. the Requested Call may be forwarded.

6.3.8 Call Forwarding Busy (SS-CFB)

If a Co-operating User has activated SS-CFB and is in busy condition, the request to set up a new Requested Call shall not be forwarded and an error indication shall be provided towards the Requesting user.

SS-CFB, activated at the Destination User, is not affected by SS-MCR, i.e. the Requested Call may be forwarded.

6.3.9 Call Forwarding No Reply (SS-CFNR)

If the Co-operating User has activated SS-CFNR and does not answer, the request to set up a new Requested Call shall not be forwarded. It is an implementation option for the entity serving the Co-operating User to either continue providing SS-MCR or to send an error indication towards the Requesting User.

SS-CFNR, activated at the Destination User, is not affected by SS-MCR, i.e. the Requested Call may be forwarded.

6.3.10 Call Deflection (SS-CD)

Deflection of the request to set up a new Requested Call shall not be allowed. The request to set up a new Requested Call shall not be deflected. It is an implementation option for the entity serving the Co-operating User to either provide SS-MCR or to send an error indication towards the Requesting User.

SS-CD, activated at the Destination User, is not affected by SS-MCR, i.e. the Requested Call may be deflected.

6.3.11 Path Replacement (ANF-PR)

No interaction.

6.3.12 Call Transfer (SS-CT)

No interaction.

6.3.13 Completion of Calls to Busy Subscribers (SS-CCBS)

No interaction.

6.3.14 Completion of Calls on No Reply (SS-CCNR)

No interaction.

6.3.15 Call Offer (SS-CO)

No interaction.

6.3.16 Do Not Disturb (SS-DND)

If the Co-operating User has activated SS-DND, it is an implementation option for the entity serving the Co-operating User to either provide SS-MCR or to send an error indication towards the Requesting User.

If the Destination User has activated SS-DND, it is an implementation option for the entity serving the Destination User to either present the Requested Call to the Destination User or to send an error indication towards the Co-operating User.

6.3.17 Do Not Disturb Override (SS-DNDO)

No interaction.

6.3.18 Call Intrusion (SS-CI)

No interaction.

6.3.19 Advice of Charge (SS-AOC)

No interaction.

6.3.20 Recall (SS-RE)

No interaction.

6.3.21 Call Interception (SS-CINT)

No interaction.

6.3.22 Transit Counter (ANF-TC)

No interaction.

6.3.23 Route Restriction Class (ANF-RRC)

No interaction.

6.3.24 Message Waiting Indication (SS-MWI)

No interaction.

6.3.25 Wireless Terminal Location Registration (SS-WTLR)

No interaction.

6.3.26 Wireless Terminal Incoming Call (SS-WTMI)

No interaction.

6.3.27 Wireless Terminal Outgoing Call (SS-WTMO)

No interaction.

6.3.28 Wireless Terminal Authentication of a WTM User (SS-WTAT)

No interaction.

6.3.29 Wireless Terminal Authentication of the PISN (SS-WTAN)

No interaction.

6.3.30 Common Information (SS-CMN)

No interaction.

6.3.31 Call Priority Interruption (Protection) (SS-CPI(P))

No interaction.

6.3.32 Private User Mobility Incoming Call (ANF-PUMI)

No interaction.

6.3.33 Private User Mobility Outgoing Call (ANF-PUMO)

No interaction.

6.3.34 Private User Mobility Registration (SS-PUMR)

No interaction.

6.3.35 Single Step Call Transfer (SS-SSCT)

No interaction.

6.3.36 Simple Dialog (SS-SD)

No interaction.

6.3.37 Call Identification and Call Linkage (ANF-CIDL)

If applicable, the same Thread ID shall be used for the call between Requesting User and Co-operating User and the call between Co-operating User and Destination User.

6.3.38 Short Message Service (SS-SMS)

No interaction.

6.3.39 Message Centre Monitoring (SS-MCM)

No interaction.

6.3.40 Mailbox Identification (SS-MID)

No interaction.

6.4 Interworking considerations

If an adjacent network supports an equivalent feature, interworking between the PISN and the other network is allowed.

6.5 Overall SDL

Figure 1 contains the dynamic description of SS-MCR using the Specification and Description Language (SDL) defined in ITU-T Recommendation Z.100 [7]. The SDL process represents the behaviour of the network in providing SS-MCR.

Input signals from the left and output signals to the left represent primitives from and to the Requesting User.

Input signals from the right and output signals to the right represent primitives from and to the Co-operating User.

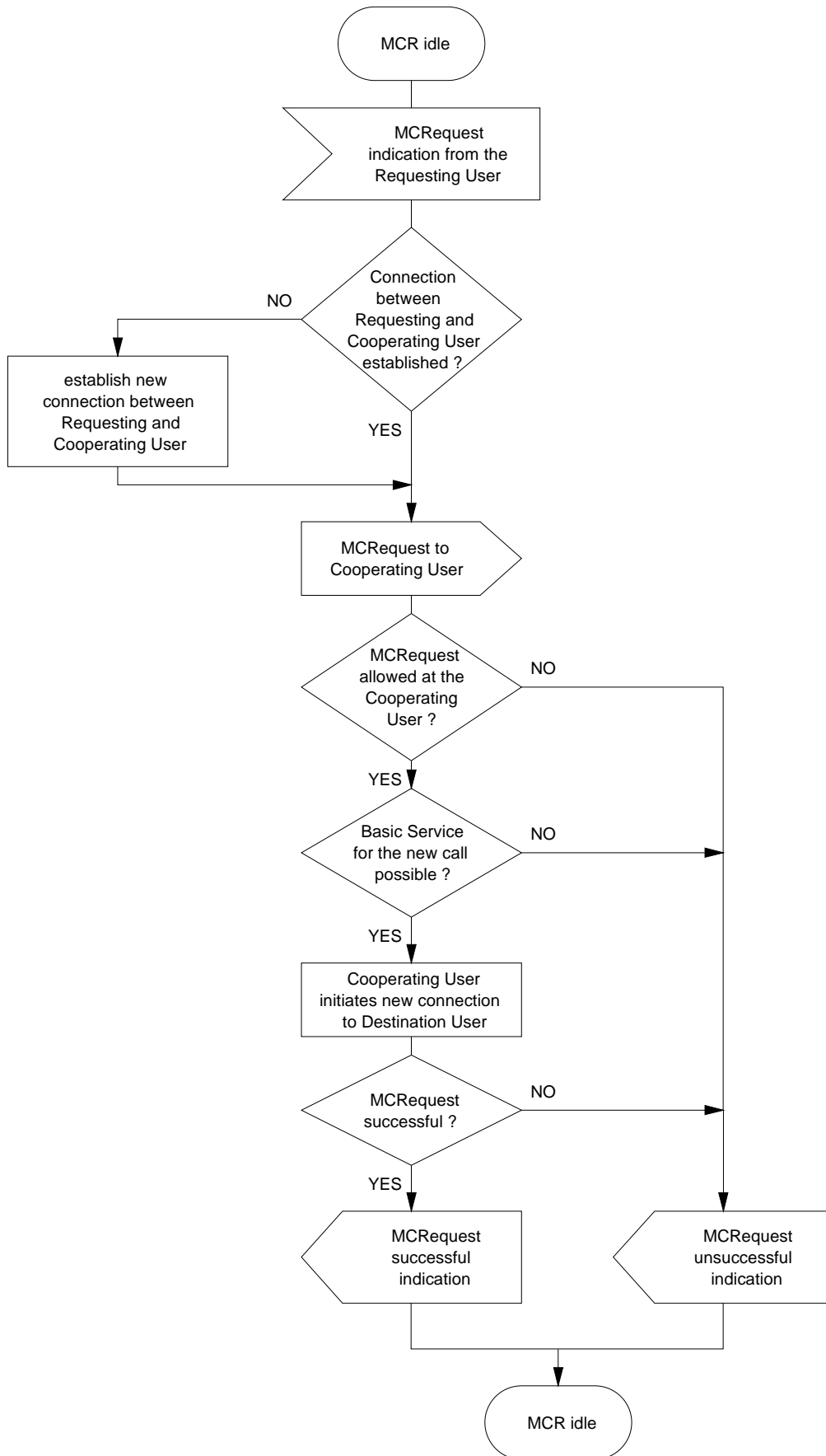


Figure 1: SS-MCR Overall SDL

7 SS-MCR stage 2 specification

7.1 Functional model

7.1.1 Functional model description

The functional model shall comprise the following Functional Entities (FEs):

FE1	Requesting User's User Agent
FE2	Requesting User's control entity
FE3	Co-operating User's control entity
FE4	Co-operating User's User Agent
FE5	Destination User's control entity
FE6	Destination User's User Agent

The following relationship shall exist between these FEs:

ra	between FE1 and FE2
rb	between FE2 and FE3
rc	between FE3 and FE4
rd	between FE3 and FE5
re	between FE5 and FE6

Figure 2 shows these FEs and relationships.

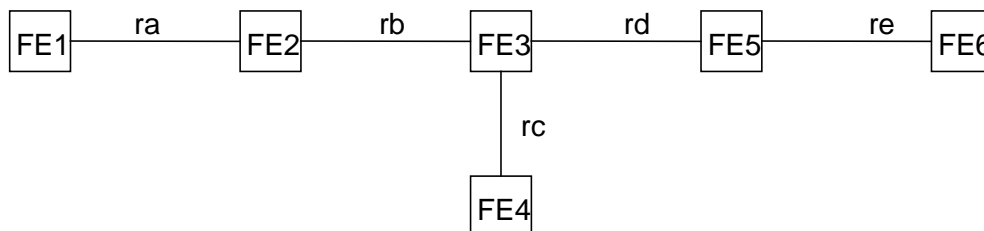


Figure 2: Functional model for SS-MCR

7.1.2 Description of Functional Entities

7.1.2.1 Requesting User's User Agent, FE1

This Functional Entity:

- receives a request for a call from the requesting user and sends an indication to FE2;
- receives a notification about the progress of call establishment of the Requested Call from FE2;
- receives a confirmation for the Requested Call from FE2.

7.1.2.2 Requesting User's Control entity, FE2

This Functional Entity:

- receives a request to establish a new call from FE1;
- establishes a signalling connection to FE3, if necessary;
- sends an indication to FE3 to establish a new call from FE3 to FE5;
- receives a notification about the progress of call establishment of the Requested Call from FE3 and sends a notification to FE1;
- receives a confirmation from FE3 for the Requested Call from FE3 to FE5 and sends a notification to FE1.

7.1.2.3 Co-operating User's Control entity, FE3

This Functional Entity:

- receives a request to establish a new call from FE2;
- sends a corresponding indication to FE4;
- checks if the request to establish a new call is allowed to be performed;
- initiates new call establishment and sends an indication about call request to FE5;
- sends a notification about the progress of call establishment of the Requested Call to FE2;
- sends a confirmation for the Requested Call to FE2.

7.1.2.4 Co-operating User's User Agent, FE4

This Functional Entity:

- receives an indication about call establishment from FE3;
- notifies the Co-operating user.

7.1.2.5 Destination User's Control entity, FE5

This Functional Entity:

- receives a request for call establishment from FE3;
- establishes a new call to FE3 and sends a corresponding indication to FE6.

7.1.2.6 Destination User's User Agent, FE6

This Functional Entity:

- receives an indication about call establishment from FE5;
- notifies the destination user.

7.2 Information flows

7.2.1 Definition of information flows

In the tables listing the elements in information flows, the column headed "Request" indicates which of these elements are mandatory (M) and which are optional (O) in a request/indication information flow, and the column headed "Confirm" (confirmed information flows only) indicates which of these elements are mandatory (M) and which are optional (O) in a response/confirmation information flow.

7.2.1.1 MCR_CallRequest

MCR_CallRequest is a confirmed information flow across ra from FE1 to FE2 and rb from FE2 to FE3 used by the Requesting User to initiate establishment of a new call from FE4 to FE6.

Table 1 lists the elements within the MCR_CallRequest information flow.

Table 1: Content of MCR_CallRequest

Element	Request	Confirm	NOTE
Destination Address	M		1
Requesting Address	O		2
Co-operating Address	O		3
Call Type	M		4
Correlation	M		5
Retain Original Call	O		6
Result		M	7

NOTE 1: This is the Destination User's Party Number (e.g. PISN number).

NOTE 2: This is the Requesting User's Party Number (e.g. PISN number).

NOTE 3: This is the Co-operating User's Party Number (e.g. PISN number).

NOTE 4: This is an indication whether a basic call with a certain basic service or call-independent signalling connection is requested.

NOTE 5: This is an indication for correlation of the Requested Call with the original call.

NOTE 6: This is an indication whether the original call shall be retained or cleared after establishment of the Requested Call.

NOTE 7: This indicates acceptance or the reason for rejection.

7.2.1.2 MCR_PromptCoop

MCR_PromptCoop is a confirmed information flow across rc from FE3 to FE4 used by the Co-operating User's Control Entity to prompt the Co-operating User prior to establishment of the Requested Call from FE4 to FE6.

MCR_PromptCoop is an internal message flow within the Co-Operating PINX between FE3 and FE4. Therefore this information flow is not visible on the external interface.

Table 2 lists the elements within the MCR_PromptCoop information flow.

Table 2: Content of MCR_PromptCoop

Element	Request	Confirm	NOTE
Requesting Address	O		1
Destination Address	M		2
Call Type	M		3
Result		M	4

NOTE 1: This is the Requesting User's identity (e.g. PISN number).

NOTE 2: This is the Destination User's identity (e.g. PISN number).

NOTE 3: This is an indication whether a basic call or call-independent signalling connection is requested.

NOTE 4: This indicates acceptance or the reason for rejection.

7.2.1.3 MCR_Inform

MCR_Inform is an unconfirmed information flow across rd from FE3 to FE5 and re from FE5 to FE6 used by the Co-operating User's Control Entity to notify the Destination User about establishment of the Requested Call from FE4 to FE6.

Table 3 lists the elements within the MCR_Inform information flow.

Table 3: Content of MCR_Inform

Element	Request	Confirm	NOTE
Requesting Address	O		1
Co-operating Address	O		2
Correlation	M		3

NOTE 1: This is the Requesting User's identity (e.g. PISN number).

NOTE 2: This is the Co-operating User's identity (e.g. PISN number).

NOTE 3: This is an indication for correlation of the Requested Call with the Original call.

7.2.1.4 MCR_Alerting

MCR_Alerting is an unconfirmed information flow across rb from FE3 to FE2 and ra from FE2 to FE1 used by the Co-operating User's Control Entity to notify the Requesting User that the Requested Call from FE4 to FE6 has reached the Call Delivered state.

Table 4 lists the elements within the MCR_Alerting information flow.

Table 4: Content of MCR_Alerting

Element	Request	Confirm	NOTE
Correlation	M		1

NOTE 1: This is an indication for correlation of the Requested Call with the Original call.

7.2.2 Relationship of information flows to Basic Call information flows

The MCR_Inform request/indication information flow shall be sent across rd in conjunction with the basic call r1_setup request/indication, which is sent to initiate call establishment by the Co-operating User.

7.2.3 Information flow sequences

A stage 3 standard for SS-MCR shall provide signalling procedures in support of the information flow sequences specified below. In addition, signalling procedures should be provided to cover other sequences arising from error situations, interactions with Basic Call, interactions with other supplementary services, different topologies, etc.

The following abbreviations are used:

req	request
ind	indication
res	response
con	confirm

7.2.3.1 Make Call Request procedures of SS-MCR

Figure 3 shows in generic form the information flow sequence for invocation of SS-MCR.

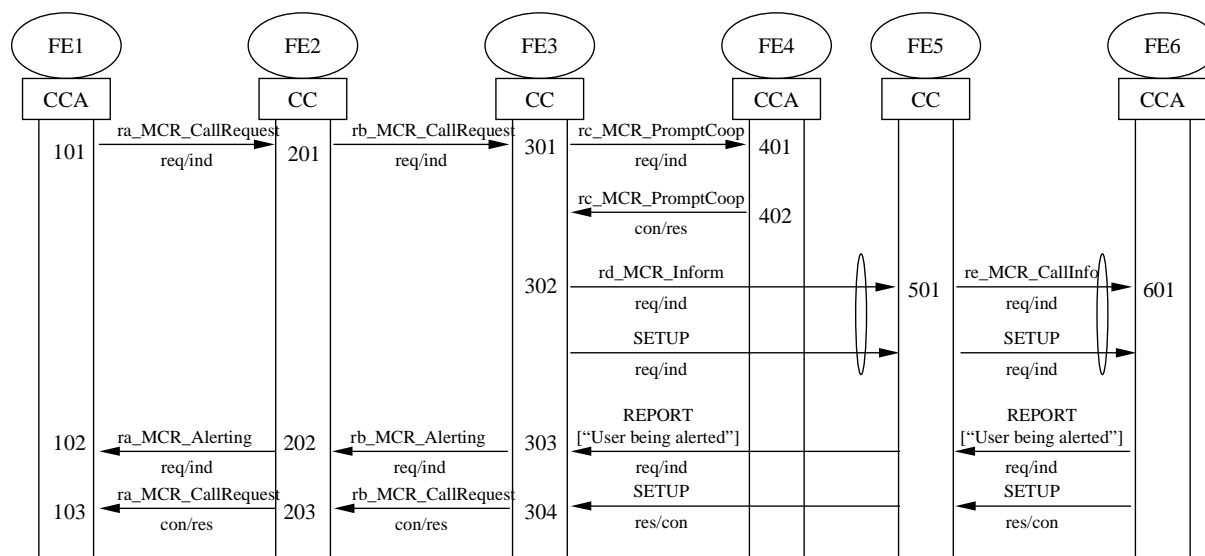


Figure 3: Information flow sequence for invocation of SS-MCR

7.3 Functional Entity actions

7.3.1 Functional Entity actions of FE1

- 101 sends `ra_MCR_CallRequest` req/ind to FE2 indicating the necessary information needed to establish a call from FE4 to FE6
- 102 receives `ra_MCR_Alerting` req/ind from FE2 indicating alerting of the Requested Call
- 103 receives `ra_MCR_CallRequest` res/con from FE2 indicating successful or unsuccessful call establishment of the Requested Call

7.3.2 Functional Entity actions of FE2

- 201 receives `ra_MCR_CallRequest` req/ind from FE1, checks if the Requesting User request is valid and allowed to be performed, and sends `rb_MCR_CallRequest` req/ind to FE3 indicating the necessary information needed to establish a call from FE4 to FE6
- 202 receives `rb_MCR_Alerting` req/ind from FE3 and sends the `ra_MCR_Alerting` req/ind to FE1
- 203 receives `rb_MCR_CallRequest` res/con from FE3 indicating successful or unsuccessful call establishment of the Requested Call and sends the corresponding `ra_MCR_CallRequest` res/con to FE1

7.3.3 Functional Entity actions of FE3

- 301 receives rb_MCR_CallRequest req/ind from FE2 and sends rc_MCR_PromptCoop req/ind to FE4
- 302 receives rc_MCR_PromptCoop res/con from FE4 and sends rd_MCR_Inform req/ind to FE5
- 303 receives REPORT req/ind indicating "User being alerted" from FE5 and sends rb_MCR_Alerting req/ind to FE2
- 304 receives SETUP res/con from FE5 and sends rb_MCR_CallRequest res/con to FE2

7.3.4 Functional Entity actions of FE4

- 401 receives rd_MCR_Inform req/ind from FE3 and indicates the information to the Co-operating User
- 402 sends rc_MCR_PromptCoop res/con to FE3

7.3.5 Functional Entity actions of FE5

- 501 receives rd_MCR_Inform req/ind from FE3, checks if the Served User is not busy and sends re_MCR_Inform req/ind to FE6

7.3.6 Functional Entity actions of FE6

- 601 receives re_MCR_Inform req/ind from FE5, and sends SETUP res/con to FE5

7.4 Functional Entity behaviour

The FE behaviours shown below are intended to illustrate typical FE behaviour in terms of information flows sent and received. The behaviour of each FE is shown using the Specification and Description Language (SDL) defined in ITU-T Recommendation Z.100 [7].

7.4.1 Behaviour of FE1

Figure 4 shows the normal behaviour of FE1. Output signals to the left and input signals from the left represent information flows to and from FE2. Output signals to the right and input signals from the right represent information flows to and from the User.

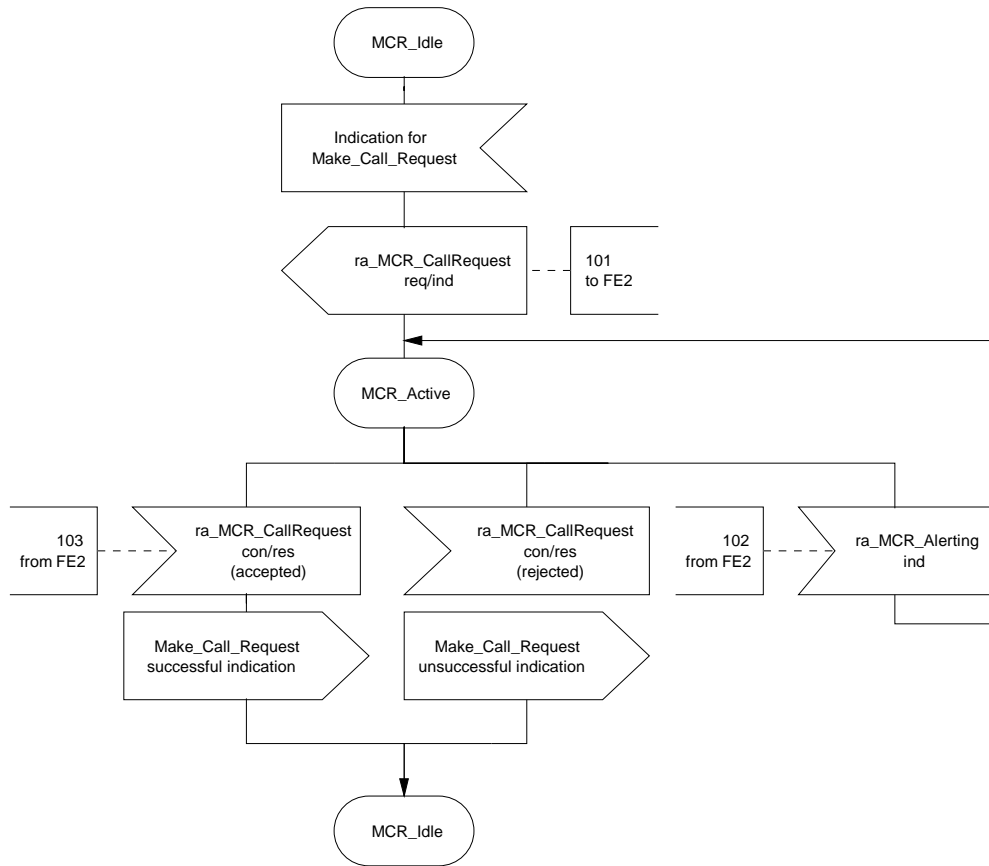


Figure 4: SDL for MCR Procedures for FE1, Requesting User's User Agent

7.4.2 Behaviour of FE2

Figure 5 shows the normal behaviour of FE2. Output signals to the left and input signals from the left represent primitives to and from the FE1. Output signals to the right and input signals from the right represent information flows from and to FE3.

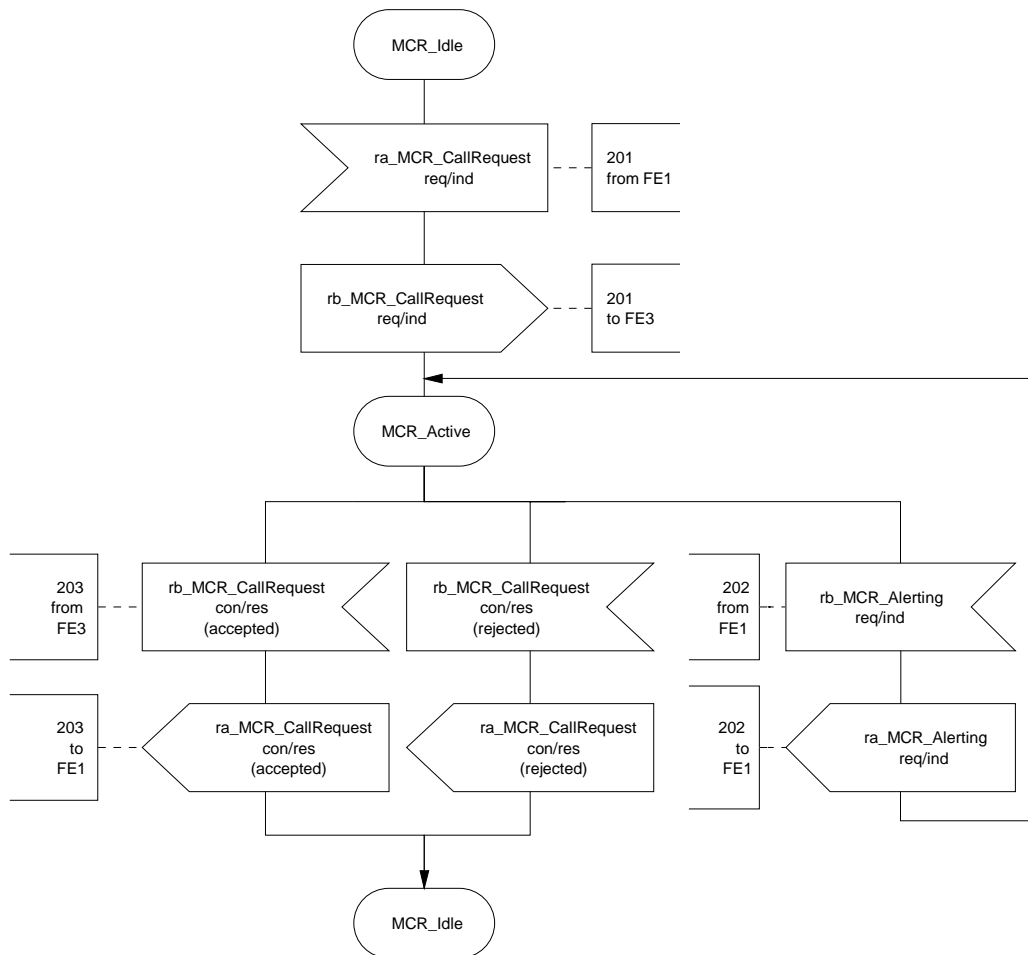


Figure 5: SDL for MCR Procedures for FE2, Requesting User's control entity

7.4.3 Behaviour of FE3

Figure 6 shows the normal behaviour of FE3. Output signals to the left and input signals from the left represent primitives to and from the FE2. Output signals to the right and input signals from the right represent primitives to and from the FE4 and FE5.

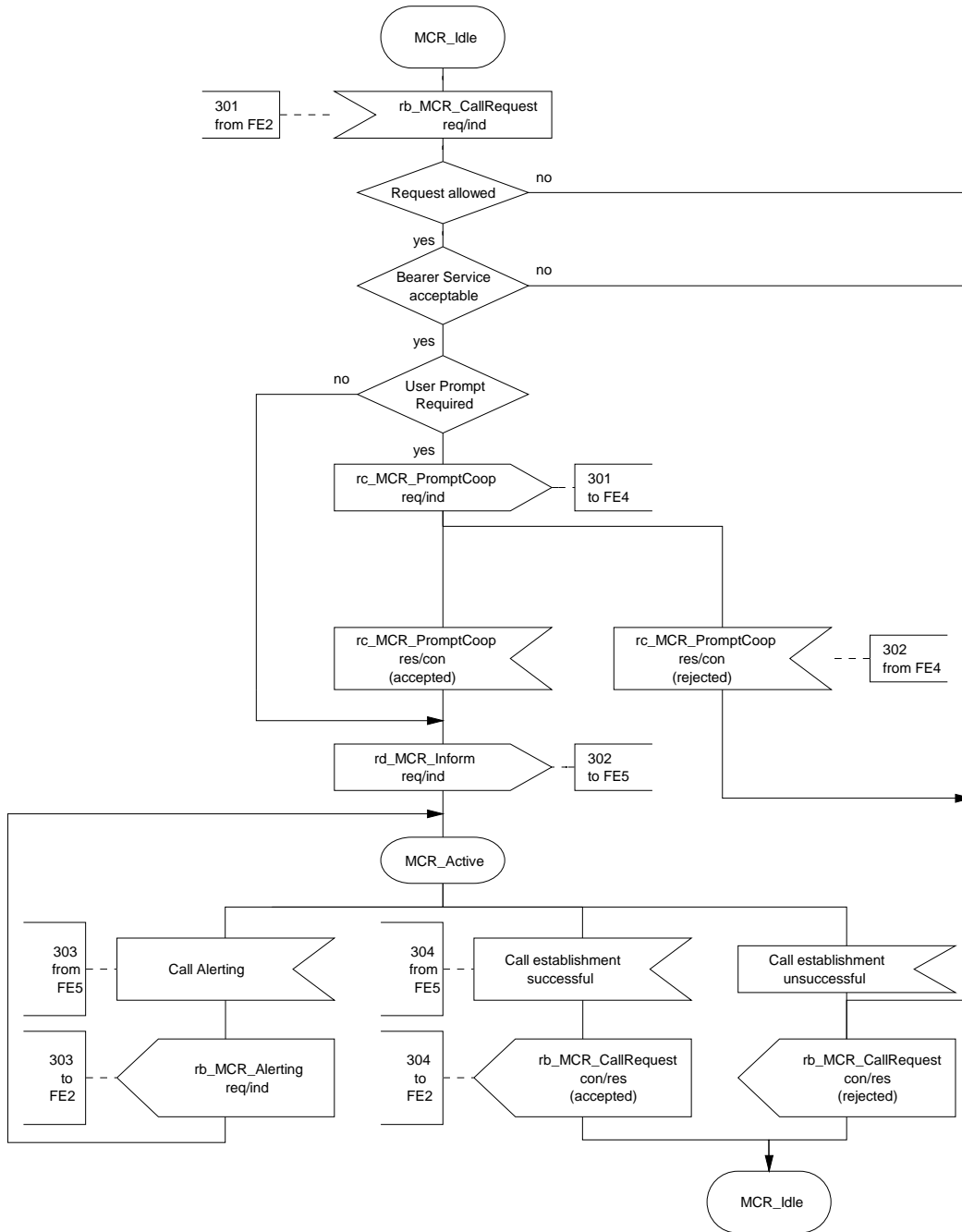


Figure 6: SDL for MCR Procedures for FE3, Co-operating User's control entity

7.4.4 Behaviour of FE4

Figure 7 shows the normal behaviour of FE4. Output signals to the left and input signals from the left represent primitives to and from the FE3.

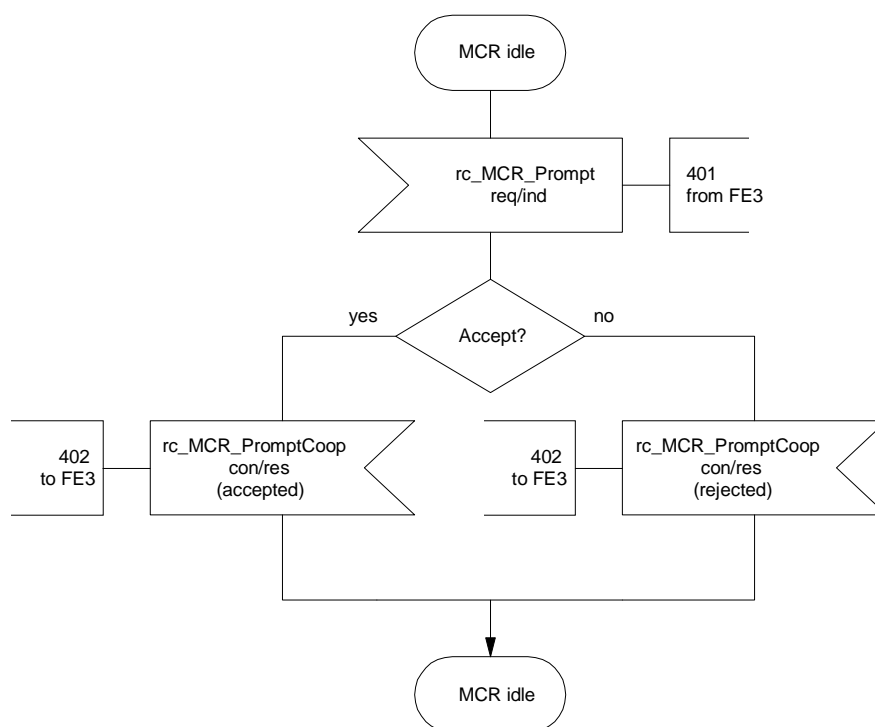


Figure 7: SDL for MCR Procedures for FE4, Co-operating User's User Agent

7.4.5 Behaviour of FE5

Figure 8 shows the normal behaviour of FE5. Output signals to the left and input signals from the left represent primitives to and from the FE3. Output signals to the right and input signals from the right represent primitives to and from the FE6.

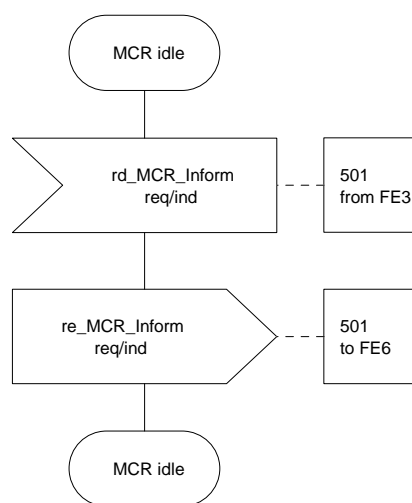


Figure 8: SDL for MCR Procedures for FE5, Destination User's control entity

7.4.6 Behaviour of FE6

Figure 9 shows the normal behaviour of FE6. Output signals to the left and input signals from the left represent primitives to and from the FE5.

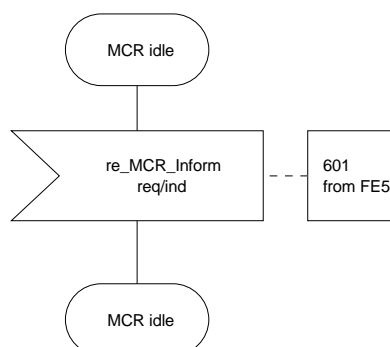


Figure 9: SDL for MCR Procedures for FE6, Destination User's User Agent

7.5 Allocation of Functional Entities to physical equipment

The allocation of FEs to physical locations shall apply as shown in table 5.

Table 5: Scenarios for the allocation of FEs to physical equipment for SS-MCR

	FE1	FE2	FE3
Scenario 1	Requesting User	Requesting User PINX	Co-operating User PINX
Scenario 2	Message Centre	Message Centre PINX	Served User PINX

	FE4	FE5	FE6
Scenario 1	Co-operating User	Destination User PINX	Destination User
Scenario 2	Served User	Message Centre PINX	Message Centre

7.6 Interworking considerations

The allocation of FEs to physical locations in the case of interworking with other networks that support a compatible service shall apply as shown in table 6.

Table 6: Scenarios for the allocation of FEs to physical equipment for SS-MCR in the case of interworking with other networks

	FE1	FE2	FE3
Scenario 3	Requesting User	Requesting User PINX	Co-operating User PINX
Scenario 4	Other network	Other network	Served User PINX
Scenario 5	Requesting User	Requesting User PINX	Other network
Scenario 6	Other network	Other network	Served User PINX
Scenario 7	Requesting User	Requesting User PINX	Other network
Scenario 8	Other network	Other network	Other network

	FE4	FE5	FE6
Scenario 3	Co-operating User	Other network	Other network
Scenario 4	Served User	Destination User PINX	Destination User
Scenario 5	Other network	Destination User PINX	Destination User
Scenario 6	Served User	Other network	Other network
Scenario 7	Other network	Other network	Other network
Scenario 8	Other network	Destination User PINX	Destination User

History

Document history		
V1.1.1	August 2003	Publication