

ETSI TS 100 737 V8.2.0 (2002-02)

Technical Specification

**Digital cellular telecommunications system (Phase 2+);
In-band control of remote transcoders and rate adaptors for
Enhanced Full Rate (EFR) and full rate traffic channels
(3GPP TS 08.60 version 8.2.0 Release 1999)**

GSM®
GLOBAL SYSTEM FOR
MOBILE COMMUNICATIONS

3GPP

ETSI 

Reference

RTS/TSGG-010860Q8R1

Keywords

GSM

ETSI

650 Route des Lucioles
F-06921 Sophia Antipolis Cedex - FRANCE

Tel.: +33 4 92 94 42 00 Fax: +33 4 93 65 47 16

Siret N° 348 623 562 00017 - NAF 742 C
Association à but non lucratif enregistrée à la
Sous-Préfecture de Grasse (06) N° 7803/88

Important notice

Individual copies of the present document can be downloaded from:

<http://www.etsi.org>

The present document may be made available in more than one electronic version or in print. In any case of existing or perceived difference in contents between such versions, the reference version is the Portable Document Format (PDF). In case of dispute, the reference shall be the printing on ETSI printers of the PDF version kept on a specific network drive within ETSI Secretariat.

Users of the present document should be aware that the document may be subject to revision or change of status. Information on the current status of this and other ETSI documents is available at

<http://portal.etsi.org/tb/status/status.asp>

If you find errors in the present document, send your comment to:

editor@etsi.fr

Copyright Notification

No part may be reproduced except as authorized by written permission.
The copyright and the foregoing restriction extend to reproduction in all media.

© European Telecommunications Standards Institute 2002.
All rights reserved.

Intellectual Property Rights

IPRs essential or potentially essential to the present document may have been declared to ETSI. The information pertaining to these essential IPRs, if any, is publicly available for **ETSI members and non-members**, and can be found in ETSI SR 000 314: "*Intellectual Property Rights (IPRs); Essential, or potentially Essential, IPRs notified to ETSI in respect of ETSI standards*", which is available from the ETSI Secretariat. Latest updates are available on the ETSI Web server (<http://webapp.etsi.org/IPR/home.asp>).

Pursuant to the ETSI IPR Policy, no investigation, including IPR searches, has been carried out by ETSI. No guarantee can be given as to the existence of other IPRs not referenced in ETSI SR 000 314 (or the updates on the ETSI Web server) which are, or may be, or may become, essential to the present document.

Foreword

This Technical Specification (TS) has been produced by ETSI 3rd Generation Partnership Project (3GPP).

The present document may refer to technical specifications or reports using their 3GPP identities, UMTS identities or GSM identities. These should be interpreted as being references to the corresponding ETSI deliverables.

The cross reference between GSM, UMTS, 3GPP and ETSI identities can be found under www.etsi.org/key.

Contents

| | |
|--|----|
| Intellectual Property Rights | 2 |
| Foreword..... | 2 |
| Foreword..... | 5 |
| 1 Scope | 6 |
| 1.1 References | 6 |
| 1.2 Abbreviations | 8 |
| 2 General Approach..... | 8 |
| 3 Frame Structure | 10 |
| 3.1 Frames for Speech Services..... | 10 |
| 3.1.1 Frames for Full Rate and Enhanced Full Rate Speech..... | 10 |
| 3.1.2 Frames for Adaptive Multi-Rate Speech | 11 |
| 3.2 O&M Frames..... | 12 |
| 3.3 Data Frames..... | 13 |
| 3.3.1 Data Frame (for Synchronisation) | 13 |
| 3.3.2 Extended data frame (E-TRAU : data transport) | 14 |
| 3.4 Idle Speech Frames | 15 |
| 3.5 Coding | 15 |
| 3.5.1 Coding of Frames for Speech Services | 15 |
| 3.5.1.1 Coding of Frames for Full Rate and Enhanced Full Rate Speech | 15 |
| 3.5.1.1.1 Coding of Control bits (C-bits)..... | 15 |
| 3.5.1.1.2 Coding of Data Bits (D-bits) | 16 |
| 3.5.1.1.3 Time Alignment Bits (T1...T4)..... | 17 |
| 3.5.1.2 Coding of Frames for Adaptive Multi-Rate Speech..... | 17 |
| 3.5.1.2.1 Coding of Control bits (C-bits)..... | 17 |
| 3.5.1.2.2 Coding of Data bits (D-bits) | 20 |
| 3.5.1.2.3 Time Alignment Bits (T1...T4)..... | 23 |
| 3.5.2 Coding of O&M Frames | 24 |
| 3.5.3 Coding of Data Frames | 24 |
| 3.5.4 Coding of Extended Data Frames | 24 |
| 3.5.5 Coding of Idle Speech Frames..... | 25 |
| 3.6 Order of Bit Transmission | 25 |
| 4 Procedures | 25 |
| 4.1 Remote Control of Transcoders and Rate Adaptors | 25 |
| 4.2 Resource Allocation | 26 |
| 4.3 Resource Release..... | 26 |
| 4.4 In Call Modification | 27 |
| 4.5 Transfer of Idle Frames, Handling of Missing Data..... | 27 |
| 4.5.1 In Full Rate data case..... | 27 |
| 4.5.2 In Full Rate speech case..... | 27 |
| 4.5.3 In Enhanced Full Rate speech case | 27 |
| 4.5.4 In Adaptive Multi-Rate speech case | 27 |
| 4.6 Procedures for Speech Services..... | 28 |
| 4.6.1 Time Alignment of Speech Service Frames | 28 |
| 4.6.1.1 Initial Time Alignment State | 28 |
| 4.6.1.2 The Static Time Alignment State | 29 |
| 4.6.1.2.1 Phase Alignment of Codec_Mode_Indication for AMR | 29 |
| 4.6.1.3 Initiation at Resource Allocation..... | 31 |
| 4.6.1.4 Time Alignment During Handover | 31 |
| 4.6.1.4.1 BSS External Handover..... | 31 |
| 4.6.1.4.2 BSS Internal Handover..... | 31 |
| 4.6.2 Procedures for Discontinuous Transmission (DTX)..... | 31 |
| 4.6.2.1 DTX procedures in the uplink direction..... | 32 |
| 4.6.2.2 DTX procedures in the downlink direction | 32 |

| | | |
|--|--|-----------|
| 4.7 | Procedures for Data Frames | 32 |
| 4.7.1 | 9.6 and 4.8 kbit/s channel coding..... | 32 |
| 4.7.1.1 | The RAA Function..... | 33 |
| 4.7.1.2 | The RA1/RA1' Function | 33 |
| 4.7.1.3 | The RA2 Function..... | 33 |
| 4.7.1.4 | Procedures for 8 kbit/s intermediate rate adaption rate | 34 |
| 4.7.1.5 | Procedures for 16 kbit/s intermediate rate adaption rate | 34 |
| 4.7.1.6 | Support of Non-Transparent Bearer Applications..... | 34 |
| 4.7.2 | 14.5 kbit/s channel coding | 34 |
| 4.7.2.1 | The RAA' Function | 34 |
| 4.7.2.2 | The RA1'/RAA' Function..... | 34 |
| 4.7.2.3 | The RA2 Function..... | 34 |
| 4.8 | Frame Synchronization..... | 35 |
| 4.8.1 | Search for Frame Synchronization..... | 35 |
| 4.8.2 | Frame Synchronization After Performing Downlink Timing Adjustments | 35 |
| 4.8.3 | Frame Synchronization Monitoring and Recovery | 35 |
| 4.9 | Correction/detection of bit errors on the terrestrial circuits..... | 36 |
| 4.9.1 | Error Detection on the Control Bits | 36 |
| 4.9.1.1 | General Procedure..... | 36 |
| 4.9.1.2 | Frames for Speech Services | 36 |
| 4.9.2 | Handling of frames received with errors..... | 37 |
| 4.9.2.1 | In case of Full Rate speech..... | 37 |
| 4.9.2.2 | In case of Enhanced Full Rate and Adaptive Multi-Rate speech | 37 |
| 4.10 | Procedures for Operation & Maintenance | 37 |
| 4.10.1 | Transfer of O&M Information Between the TRAU and the BSC | 37 |
| 4.10.2 | Procedures in the TRAU..... | 37 |
| 4.10.3 | Procedures in the BSC | 38 |
| 4.10.3.1 | Use of O&M Frames..... | 38 |
| 4.10.4 | Procedures in the BTS | 38 |
| Annex A (informative): Change History | | 39 |
| History | | 40 |

Foreword

This Technical Specification has been produced by the 3rd Generation Partnership Project (3GPP).

The contents of the present document are subject to continuing work within the TSG and may change following formal TSG approval. Should the TSG modify the contents of the present document, it will be re-released by the TSG with an identifying change of release date and an increase in version number as follows:

Version x.y.z

where:

- x the first digit:
 - 1 presented to TSG for information;
 - 2 presented to TSG for approval;
 - 3 or greater indicates TSG approved document under change control.
- y the second digit is incremented for all changes of substance, i.e. technical enhancements, corrections, updates, etc.
- z the third digit is incremented when editorial only changes have been incorporated in the document.

1 Scope

When 64 kbit/s traffic channels are used on the Abis interface, the speech shall be coded according to ITU-T Recommendation G.711 and the data rate adaptation shall be as specified in GSM 04.21 and GSM 08.20.

In the case where 16 kbit/s traffic channels are used for full rate speech, enhanced full rate speech, Adaptive Multi-Rate speech or full rate data service, then the present document shall apply for frame structure and for control of remote transcoders and additional rate adaptors.

For Adaptive Multi-Rate speech the present document specifies the 16 kBit/s submultiplexing, both for the full and the half rate traffic channels (TCH/AFS and TCH/AHS). The specification for 8 kBit/s submultiplexing is given in GSM 08.61, both for the full and the half rate traffic channels (TCH/AFS and TCH/AHS).

The use and general aspects of the Abis interface are given in GSM 08.51.

NOTE: The present document should be considered together with the GSM 06 series of specifications, GSM 04.21 (Rate Adaptation on the MS-BSS Interface) and GSM 08.20 (Rate Adaptation on the BS/MS Interface).

1.1 References

The following documents contain provisions which, through reference in this text, constitute provisions of the present document.

- References are either specific (identified by date of publication, edition number, version number, etc.) or non-specific.
- For a specific reference, subsequent revisions do not apply.
- For a non-specific reference, the latest version applies. In the case of a reference to a 3GPP document (including a GSM document), a non-specific reference implicitly refers to the latest version of that document *in the same Release as the present document*.

- [1] GSM 01.04: "Digital cellular telecommunications system (Phase 2+); Abbreviations and acronyms".
- [2] GSM 04.06: "Digital cellular telecommunications system (Phase 2+); Mobile Station - Base Station System (MS - BSS) interface; Data Link (DL) layer specification".
- [3] GSM 04.21: "Digital cellular telecommunications system (Phase 2+); Rate adaption on the Mobile Station - Base Station System (MS - BSS) interface".
- [4] GSM 06.01: "Digital cellular telecommunications system (Phase 2+); Full rate speech; Processing functions".
- [5] GSM 06.10: "Digital cellular telecommunications system (Phase 2+); Full rate speech; Transcoding".
- [6] GSM 06.11: "Digital cellular telecommunications system (Phase 2+); Full rate speech; Substitution and muting of lost frames for full rate speech channels".
- [7] GSM 06.12: "Digital cellular telecommunications system (Phase 2+); Full rate speech; Comfort noise aspect for full rate speech traffic channels".
- [8] GSM 06.31: "Digital cellular telecommunications system (Phase 2+); Full rate speech; Discontinuous Transmission (DTX) for full rate speech traffic channels".
- [9] GSM 06.32: "Digital cellular telecommunications system (Phase 2+); Voice Activity Detector (VAD)".
- [10] GSM 08.20: "Digital cellular telecommunications system (Phase 2+); Rate adaption on the Base Station System - Mobile-services Switching Centre (BSS - MSC) interface".

- [11] GSM 08.51: "Digital cellular telecommunications system (Phase 2+); Base Station Controller - Base Transceiver Station (BSC - BTS) interface; General aspects".
- [12] GSM 08.54: "Digital cellular telecommunications system (Phase 2+); Base Station Controller - Base Transceiver Station (BSC - BTS) interface; Layer 1 structure of physical circuits".
- [13] GSM 08.58: "Digital cellular telecommunications system (Phase 2+); Base Station Controller - Base Transceiver Station (BSC - BTS) interface; Layer 3 specification".
- [14] GSM 12.21: "Digital cellular telecommunications system (Phase 2+); Network Management (NM) procedures and message on the A-bis interface".
- [15] ITU-T Recommendation G.711: "Pulse code modulation (PCM) of voice frequencies".
- [16] ITU-T Recommendation I.460: "Multiplexing, rate adaption and support of existing interfaces".
- [17] ITU-T Recommendation V.110: "Support of data terminal equipments (DTEs) with V-Series interfaces by an integrated services digital network".
- [18] GSM 06.51: "Digital cellular telecommunications system (Phase 2+); Enhanced Full rate speech processing functions".
- [19] GSM 06.60: "Digital cellular telecommunications system (Phase 2+); Enhanced Full rate speech transcoding".
- [20] GSM 06.61: "Digital cellular telecommunications system (Phase 2+); Substitution and muting of lost frames for Enhanced Full rate speech channels".
- [21] GSM 06.62: "Digital cellular telecommunications system (Phase 2+); Comfort noise aspect for Enhanced Full rate speech traffic channels".
- [22] GSM 06.81: "Digital cellular telecommunications system (Phase 2+); Discontinuous Transmission (DTX) for Enhanced Full rate speech traffic channel".
- [23] GSM 06.82: "Digital cellular telecommunications system (Phase 2+); Voice Activity Detection (VAD)".
- [24] GSM 06.71: "Digital cellular telecommunications system; Adaptive Multi-Rate speech processing functions, General Description".
- [25] GSM 06.90: "Digital cellular telecommunications system; Adaptive Multi-Rate speech transcoding".
- [26] GSM 06.91: "Digital cellular telecommunications system; Substitution and muting of lost frames for Adaptive Multi-Rate speech traffic channels".
- [27] GSM 06.92: "Digital cellular telecommunications system; Comfort noise aspect for Adaptive Multi-Rate speech traffic channels".
- [28] GSM 06.93: "Digital cellular telecommunications system; Discontinuous Transmission (DTX) for Adaptive Multi-Rate speech traffic channels".
- [29] GSM 06.94: "Digital cellular telecommunications system; Voice Activity Detection (VAD) for Adaptive Multi-Rate speech traffic channels".
- [30] GSM 05.09: "Digital cellular telecommunications system; Link Adaptation".
- [31] GSM 08.61: "Digital cellular telecommunications system; Inband control of remote transcoders and rate adaptors for half rate traffic channels".
- [32] GSM 08.62: "Digital cellular telecommunications system; Inband Tandem Free Operation (TFO) of Speech Codecs".

1.2 Abbreviations

For the purposes of the present document, the abbreviations given in GSM 01.04 and the following apply:

| | |
|---------|---|
| AMR | Adaptive Multi-Rate |
| CMC | Codec_Mode_Command |
| CMI | Codec_Mode_Indication |
| CMR | Codec_Mode_Request |
| Onset | Speech Onset Frame Classification |
| PAB | Phase Alignment Bit |
| PAC | Phase Alignment Command |
| RATSCCH | Robust AMR Traffic Synchronised Control CHannel |
| RIF | Request or Indication Flag |
| TAC | Time Alignment Command |
| TAE | Time Alignment Extension |
| TFO | Tandem Free Operation |
| TFOE | TFO Enable |
| UFE | Uplink Frame Error |

2 General Approach

When the transcoders/rate adaptors are positioned remote to the BTS, the information between the Channel Codec Unit (CCU) and the remote Transcoder/Rate Adaptor Unit (TRAU) is transferred in frames with a fixed length of 320 bits (20 ms). In the present document, these frames are denoted "TRAU frames". Within these frames, both the speech/data and the TRAU associated control signals are transferred.

The Abis interface should be the same if the transcoder is positioned 1) at the MSC site of the BSS or if it is positioned 2) at the BSC site of the BSS. In case 1), the BSC should be considered as transparent for 16 kbit/s channels.

In case of 4,8 and 9,6 kbit/s channel coding when data is adapted to the 320 bit frames, a conversion function is required in addition to the conversion/rate adaption specified in GSM 08.20. This function constitutes the RAA. In case of 14,5 kbit/s channel coding, no RAA rate adaption is required because V.110 framing is not used.

The TRAU is considered a part of the BSC, and the signalling between the BSC and the TRAU (e.g. detection of call release, handover and transfer of O&M information) may be performed by using BSC internal signals. The signalling between the CCU and the TRAU, using TRAU frames as specified in the present document, is mandatory when the Abis interface is applied.

NOTE 1: If standard 64 kbit/s switching is used in the BSC, multiplexing according to ITU-T Recommendation I.460 should apply at both sides of the switch.

In figure 2.1, a possible configuration of the TRAU and the CCU is shown.

The functions inside the TRAU are:

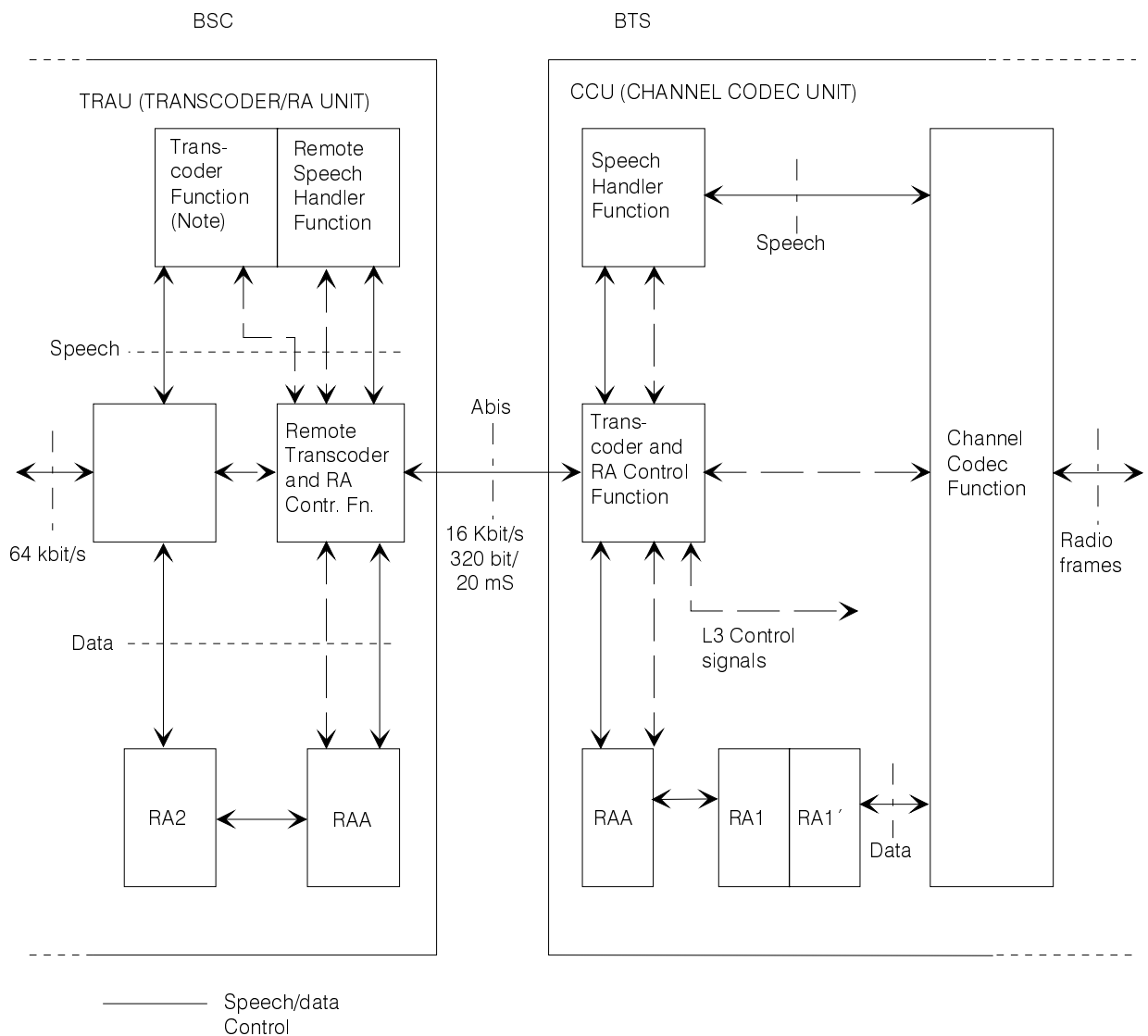
- "Remote Transcoder and Rate Adaptor Control Function" (RTRACF);
- "Remote Speech Handler Function" (RSHF);
- The RAA function in case of 4.8 and 9.6 kbit/s channel coding;
- The RAA' function in case of 14.5 kbit/s channel coding;
- The RA2 function;
- The transcoder function.
- Optionally the TFO functions (see GSM 08.62).

The functions inside the CCU are:

- "Transcoder and Rate Adaptor Control Function" (TRACF);

- "Speech Handler Function" (SHF);
- The RAA function in case of 4.8 and 9.6 kbit/s channel coding;
- The RA1/RA1' function in case of 4.8 and 9.6 kbit/s channel coding;
- The RA1'/RAA' function in case of 14.5 kbit/s channel coding;
- The channel codec function;
- If AMR is supported, the Link Adaptation (see GSM 05.09).

The present document will not describe the procedures inside the TRAU and the CCU. The layout in figure 2.1 is only intended as a reference model.



NOTE: This recommendation assumes the DTX handler function to be a part of the Transcoder Function.

Figure GSM 08.60/2.1: Functional entities for handling of remote control of remote transcoders and rate adaptors

Figure 2.1: Functional entities for handling of remote control of remote transcoders and rate adaptors

NOTE 2: This figure applies only for 4,8 and 9,6 kbit/s channel coding.

3 Frame Structure

3.1 Frames for Speech Services

3.1.1 Frames for Full Rate and Enhanced Full Rate Speech

| Octet no. | Bit number | | | | | | | |
|-----------|------------|------|------|------|------|------|------|------|
| | 1 | 2 | 3 | 4 | 5 | 6 | 7 | 8 |
| 0 | 0 | 0 | 0 | 0 | 0 | 0 | 0 | 0 |
| 1 | 0 | 0 | 0 | 0 | 0 | 0 | 0 | 0 |
| 2 | 1 | C1 | C2 | C3 | C4 | C5 | C6 | C7 |
| 3 | C8 | C9 | C10 | C11 | C12 | C13 | C14 | C15 |
| 4 | 1 | D1 | D2 | D3 | D4 | D5 | D6 | D7 |
| 5 | D8 | D9 | D10 | D11 | D12 | D13 | D14 | D15 |
| 6 | 1 | D16 | D17 | D18 | D19 | D20 | D21 | D22 |
| 7 | D23 | D24 | D25 | D26 | D27 | D28 | D29 | D30 |
| 8 | 1 | D31 | D32 | D33 | D34 | D35 | D36 | D37 |
| 9 | D38 | D39 | D40 | D41 | D42 | D43 | D44 | D45 |
| 10 | 1 | D46 | D47 | D48 | D49 | D50 | D51 | D52 |
| 11 | D53 | D54 | D55 | D56 | D57 | D58 | D59 | D60 |
| 12 | 1 | D61 | D62 | D63 | D64 | D65 | D66 | D67 |
| 13 | D68 | D69 | D70 | D71 | D72 | D73 | D74 | D75 |
| 14 | 1 | D76 | D77 | D78 | D79 | D80 | D81 | D82 |
| 15 | D83 | D84 | D85 | D86 | D87 | D88 | D89 | D90 |
| 16 | 1 | D91 | D92 | D93 | D94 | D95 | D96 | D97 |
| 17 | D98 | D99 | D100 | D101 | D102 | D103 | D104 | D105 |
| 18 | 1 | D106 | D107 | D108 | D109 | D110 | D111 | D112 |
| 19 | D113 | D114 | D115 | D116 | D117 | D118 | D119 | D120 |
| 20 | 1 | D121 | D122 | D123 | D124 | D125 | D126 | D127 |
| 21 | D128 | D129 | D130 | D131 | D132 | D133 | D134 | D135 |
| 22 | 1 | D136 | D137 | D138 | D139 | D140 | D141 | D142 |
| 23 | D143 | D144 | D145 | D146 | D147 | D148 | D149 | D150 |
| 24 | 1 | D151 | D152 | D153 | D154 | D155 | D156 | D157 |
| 25 | D158 | D159 | D160 | D161 | D162 | D163 | D164 | D165 |
| 26 | 1 | D166 | D167 | D168 | D169 | D170 | D171 | D172 |
| 27 | D173 | D174 | D175 | D176 | D177 | D178 | D179 | D180 |
| 28 | 1 | D181 | D182 | D183 | D184 | D185 | D186 | D187 |
| 29 | D188 | D189 | D190 | D191 | D192 | D193 | D194 | D195 |
| 30 | 1 | D196 | D197 | D198 | D199 | D200 | D201 | D202 |
| 31 | D203 | D204 | D205 | D206 | D207 | D208 | D209 | D210 |
| 32 | 1 | D211 | D212 | D213 | D214 | D215 | D216 | D217 |
| 33 | D218 | D219 | D220 | D221 | D222 | D223 | D224 | D225 |
| 34 | 1 | D226 | D227 | D228 | D229 | D230 | D231 | D232 |
| 35 | D233 | D234 | D235 | D236 | D237 | D238 | D239 | D240 |
| 36 | 1 | D241 | D242 | D243 | D244 | D245 | D246 | D247 |
| 37 | D248 | D249 | D250 | D251 | D252 | D253 | D254 | D255 |
| 38 | 1 | D256 | D257 | D258 | D259 | D260 | C16 | C17 |
| 39 | C18 | C19 | C20 | C21 | T1 | T2 | T3 | T4 |

3.1.2 Frames for Adaptive Multi-Rate Speech

| Octet no. | Bit number | | | | | | | |
|-----------|------------|------|------|------|------|------|------|------|
| | 1 | 2 | 3 | 4 | 5 | 6 | 7 | 8 |
| 0 | 0 | 0 | 0 | 0 | 0 | 0 | 0 | 0 |
| 1 | 0 | 0 | 0 | 0 | 0 | 0 | 0 | 0 |
| 2 | 1 | C1 | C2 | C3 | C4 | C5 | C6 | C7 |
| 3 | C8 | C9 | C10 | C11 | C12 | C13 | C14 | C15 |
| 4 | 1 | C16 | C17 | C18 | C19 | C20 | C21 | C22 |
| 5 | C23 | C24 | C25 | D1 | D2 | D3 | D4 | D5 |
| 6 | 1 | D6 | D7 | D8 | D9 | D10 | D11 | D12 |
| 7 | D13 | D14 | D15 | D16 | D17 | D18 | D19 | D20 |
| 8 | 1 | D21 | D22 | D23 | D24 | D25 | D26 | D27 |
| 9 | D28 | D29 | D30 | D31 | D32 | D33 | D34 | D35 |
| 10 | 1 | D36 | D37 | D38 | D39 | D40 | D41 | D42 |
| 11 | D43 | D44 | D45 | D46 | D47 | D48 | D49 | D50 |
| 12 | 1 | D52 | D52 | D53 | D54 | D55 | D56 | D57 |
| 13 | D58 | D59 | D60 | D61 | D62 | D63 | D64 | D65 |
| 14 | 1 | D66 | D67 | D68 | D69 | D70 | D71 | D72 |
| 15 | D73 | D74 | D75 | D76 | D77 | D78 | D79 | D80 |
| 16 | 1 | D81 | D82 | D83 | D84 | D85 | D86 | D87 |
| 17 | D88 | D89 | D90 | D91 | D92 | D93 | D94 | D95 |
| 18 | 1 | D96 | D97 | D98 | D99 | D100 | D101 | D102 |
| 19 | D103 | D104 | D105 | D106 | D107 | D108 | D109 | D110 |
| 20 | 1 | D111 | D112 | D113 | D114 | D115 | D116 | D117 |
| 21 | D118 | D119 | D120 | D121 | D122 | D123 | D124 | D125 |
| 22 | 1 | D126 | D127 | D128 | D129 | D130 | D131 | D132 |
| 23 | D133 | D134 | D135 | D136 | D137 | D138 | D139 | D140 |
| 24 | 1 | D141 | D142 | D143 | D144 | D145 | D146 | D147 |
| 25 | D148 | D149 | D150 | D151 | D152 | D153 | D154 | D155 |
| 26 | 1 | D156 | D157 | D158 | D159 | D160 | D161 | D162 |
| 27 | D163 | D164 | D165 | D166 | D167 | D168 | D169 | D170 |
| 28 | 1 | D171 | D172 | D173 | D174 | D175 | D176 | D177 |
| 29 | D178 | D179 | D180 | D181 | D182 | D183 | D184 | D185 |
| 30 | 1 | D186 | D187 | D188 | D189 | D190 | D191 | D192 |
| 31 | D193 | D194 | D195 | D196 | D197 | D198 | D199 | D200 |
| 32 | 1 | D201 | D202 | D203 | D204 | D205 | D206 | D207 |
| 33 | D208 | D209 | D210 | D211 | D212 | D213 | D214 | D215 |
| 34 | 1 | D216 | D217 | D218 | D219 | D220 | D221 | D222 |
| 35 | D223 | D224 | D225 | D226 | D227 | D228 | D229 | D230 |
| 36 | 1 | D231 | D232 | D233 | D234 | D235 | D236 | D237 |
| 37 | D238 | D239 | D240 | D241 | D242 | D243 | D244 | D245 |
| 38 | 1 | D246 | D247 | D248 | D249 | D250 | D251 | D252 |
| 39 | D253 | D254 | D255 | D256 | T1 | T2 | T3 | T4 |

3.2 O&M Frames

| Octet no. | Bit number | | | | | | | |
|-----------|------------|------|------|------|------|------|------|------|
| | 1 | 2 | 3 | 4 | 5 | 6 | 7 | 8 |
| 0 | 0 | 0 | 0 | 0 | 0 | 0 | 0 | 0 |
| 1 | 0 | 0 | 0 | 0 | 0 | 0 | 0 | 0 |
| 2 | 1 | C1 | C2 | C3 | C4 | C5 | C6 | C7 |
| 3 | C8 | C9 | C10 | C11 | C12 | C13 | C14 | C15 |
| 4 | 1 | D1 | D2 | D3 | D4 | D5 | D6 | D7 |
| 5 | D8 | D9 | D10 | D11 | D12 | D13 | D14 | D15 |
| 6 | 1 | D16 | D17 | D18 | D19 | D20 | D21 | D22 |
| 7 | D23 | D24 | D25 | D26 | D27 | D28 | D29 | D30 |
| 8 | 1 | D31 | D32 | D33 | D34 | D35 | D36 | D37 |
| 9 | D38 | D39 | D40 | D41 | D42 | D43 | D44 | D45 |
| 10 | 1 | D46 | D47 | D48 | D49 | D50 | D51 | D52 |
| 11 | D53 | D54 | D55 | D56 | D57 | D58 | D59 | D60 |
| 12 | 1 | D61 | D62 | D63 | D64 | D65 | D66 | D67 |
| 13 | D68 | D69 | D70 | D71 | D72 | D73 | D74 | D75 |
| 14 | 1 | D76 | D77 | D78 | D79 | D80 | D81 | D82 |
| 15 | D83 | D84 | D85 | D86 | D87 | D88 | D89 | D90 |
| 16 | 1 | D91 | D92 | D93 | D94 | D95 | D96 | D97 |
| 17 | D98 | D99 | D100 | D101 | D102 | D103 | D104 | D105 |
| 18 | 1 | D106 | D107 | D108 | D109 | D110 | D111 | D112 |
| 19 | D113 | D114 | D115 | D116 | D117 | D118 | D119 | D120 |
| 20 | 1 | D121 | D122 | D123 | D124 | D125 | D126 | D127 |
| 21 | D128 | D129 | D130 | D131 | D132 | D133 | D134 | D135 |
| 22 | 1 | D136 | D137 | D138 | D139 | D140 | D141 | D142 |
| 23 | D143 | D144 | D145 | D146 | D147 | D148 | D149 | D150 |
| 24 | 1 | D151 | D152 | D153 | D154 | D155 | D156 | D157 |
| 25 | D158 | D159 | D160 | D161 | D162 | D163 | D164 | D165 |
| 26 | 1 | D166 | D167 | D168 | D169 | D170 | D171 | D172 |
| 27 | D173 | D174 | D175 | D176 | D177 | D178 | D179 | D180 |
| 28 | 1 | D181 | D182 | D183 | D184 | D185 | D186 | D187 |
| 29 | D188 | D189 | D190 | D191 | D192 | D193 | D194 | D195 |
| 30 | 1 | D196 | D197 | D198 | D199 | D200 | D201 | D202 |
| 31 | D203 | D204 | D205 | D206 | D207 | D208 | D209 | D210 |
| 32 | 1 | D211 | D212 | D213 | D214 | D215 | D216 | D217 |
| 33 | D218 | D219 | D220 | D221 | D222 | D223 | D224 | D225 |
| 34 | 1 | D226 | D227 | D228 | D229 | D230 | D231 | D232 |
| 35 | D233 | D234 | D235 | D236 | D237 | D238 | D239 | D240 |
| 36 | 1 | D241 | D242 | D243 | D244 | D245 | D246 | D247 |
| 37 | D248 | D249 | D250 | D251 | D252 | D253 | D254 | D255 |
| 38 | 1 | D256 | D257 | D258 | D259 | D260 | D261 | D262 |
| 39 | D263 | D264 | S1 | S2 | S3 | S4 | S5 | S6 |

3.3 Data Frames

3.3.1 Data Frame (for Synchronisation)

| Octet no. | Bit number | | | | | | | |
|-----------|------------|----|-----|-----|-----|-----|-----|-----|
| | 1 | 2 | 3 | 4 | 5 | 6 | 7 | 8 |
| 0 | 0 | 0 | 0 | 0 | 0 | 0 | 0 | 0 |
| 1 | 0 | 0 | 0 | 0 | 0 | 0 | 0 | 0 |
| 2 | 1 | C1 | C2 | C3 | C4 | C5 | C6 | C7 |
| 3 | C8 | C9 | C10 | C11 | C12 | C13 | C14 | C15 |
| 4 | 1 | | | | | | | . |
| 5 | 1 | | | | | | | . |
| 6 | 1 | | | | | | | . |
| 7 | 1 | | | | | | | |
| 8 | 1 | | | | | | | |
| 9 | 1 | | | | | | | |
| 10 | 1 | | | | | | | |
| 11 | 1 | | | | | | | |
| 12 | 1 | | | | | | | |
| 13 | 1 | | | | | | | |
| 14 | 1 | | | | | | | |
| 15 | 1 | | | | | | | |
| 161 | 1 | | | | | | | |
| 17 | 1 | | | | | | | |
| 18 | 1 | | | | | | | |
| 19 | 1 | | | | | | | |
| 20 | 1 | | | | | | | |
| 21 | 1 | | | | | | | |
| 22 | 1 | | | | | | | |
| 23 | 1 | | | | | | | |
| 24 | 1 | | | | | | | |
| 25 | 1 | | | | | | | |
| 26 | 1 | | | | | | | |
| 27 | 1 | | | | | | | |
| 28 | 1 | | | | | | | |
| 29 | 1 | | | | | | | |
| 30 | 1 | | | | | | | |
| 31 | 1 | | | | | | | |
| 32 | 1 | | | | | | | |
| 33 | 1 | | | | | | | |
| 34 | 1 | | | | | | | |
| 35 | 1 | | | | | | | |
| 36 | 1 | | | | | | | |
| 37 | 1 | | | | | | | |
| 38 | 1 | | | | | | | |
| 39 | 1 | | | | | | | |

3.3.2 Extended data frame (E-TRAU : data transport)

| Octet no. | Bit number | | | | | | | |
|-----------|---|----|-----|-----|-----|-----|------|------|
| | 1 | 2 | 3 | 4 | 5 | 6 | 7 | 8 |
| 0 | 0 | 0 | 0 | 0 | 0 | 0 | 0 | 0 |
| 1 | 0 | 0 | 0 | 0 | 0 | 0 | 0 | 0 |
| 2 | 1 | C1 | C2 | C3 | C4 | C5 | C6 | C7 |
| 3 | C8 | C9 | C10 | C11 | C12 | C13 | M1 | M2 |
| 4 | D1 | D2 | ... | | | | | |
| 5 | | | | | | | | |
| 6 | | | | | | | | |
| 7 | Data block of 288 data bits and M1, M2. | | | | | | | |
| 8 | | | | | | | | |
| 9 | | | | | | | | |
| 10 | | | | | | | | |
| 11 | | | | | | | | |
| 12 | | | | | | | | |
| 13 | | | | | | | | |
| 14 | | | | | | | | |
| 15 | | | | | | | | |
| 16 | | | | | | | | |
| 17 | | | | | | | | |
| 18 | | | | | | | | |
| 19 | | | | | | | | |
| 20 | | | | | | | | |
| 21 | | | | | | | | |
| 22 | | | | | | | | |
| 23 | | | | | | | | |
| 24 | | | | | | | | |
| 25 | | | | | | | | |
| 26 | | | | | | | | |
| 27 | | | | | | | | |
| 28 | | | | | | | | |
| 29 | | | | | | | | |
| 30 | | | | | | | | |
| 31 | | | | | | | | |
| 32 | | | | | | | | |
| 33 | | | | | | | | |
| 34 | | | | | | | | |
| 35 | | | | | | | | |
| 36 | | | | | | | | |
| 37 | | | | | | | | |
| 38 | | | | | | | | |
| 39 | | | | | | ... | D287 | D288 |

3.4 Idle Speech Frames

| Octet no. | Bit number | | | | | | | |
|-----------|------------|-----|-----|-----|-----|-----|-----|-----|
| | 1 | 2 | 3 | 4 | 5 | 6 | 7 | 8 |
| 0 | 0 | 0 | 0 | 0 | 0 | 0 | 0 | 0 |
| 1 | 0 | 0 | 0 | 0 | 0 | 0 | 0 | 0 |
| 2 | 1 | C1 | C2 | C3 | C4 | C5 | C6 | C7 |
| 3 | C8 | C9 | C10 | C11 | C12 | C13 | C14 | C15 |
| 4 | 1 | 1 | 1 | 1 | 1 | 1 | 1 | 1 |
| 5 | 1 | 1 | 1 | 1 | 1 | 1 | 1 | 1 |
| 6 | 1 | 1 | 1 | 1 | 1 | 1 | 1 | 1 |
| 7 | 1 | 1 | 1 | 1 | 1 | 1 | 1 | 1 |
| 8 | 1 | 1 | 1 | 1 | 1 | 1 | 1 | 1 |
| 9 | 1 | 1 | 1 | 1 | 1 | 1 | 1 | 1 |
| 10 | 1 | 1 | 1 | 1 | 1 | 1 | 1 | 1 |
| 11 | 1 | 1 | 1 | 1 | 1 | 1 | 1 | 1 |
| 12 | 1 | 1 | 1 | 1 | 1 | 1 | 1 | 1 |
| 13 | 1 | 1 | 1 | 1 | 1 | 1 | 1 | 1 |
| 14 | 1 | 1 | 1 | 1 | 1 | 1 | 1 | 1 |
| 15 | 1 | 1 | 1 | 1 | 1 | 1 | 1 | 1 |
| 16 | 1 | 1 | 1 | 1 | 1 | 1 | 1 | 1 |
| 17 | 1 | 1 | 1 | 1 | 1 | 1 | 1 | 1 |
| 18 | 1 | 1 | 1 | 1 | 1 | 1 | 1 | 1 |
| 19 | 1 | 1 | 1 | 1 | 1 | 1 | 1 | 1 |
| 20 | 1 | 1 | 1 | 1 | 1 | 1 | 1 | 1 |
| 21 | 1 | 1 | 1 | 1 | 1 | 1 | 1 | 1 |
| 22 | 1 | 1 | 1 | 1 | 1 | 1 | 1 | 1 |
| 23 | 1 | 1 | 1 | 1 | 1 | 1 | 1 | 1 |
| 24 | 1 | 1 | 1 | 1 | 1 | 1 | 1 | 1 |
| 25 | 1 | 1 | 1 | 1 | 1 | 1 | 1 | 1 |
| 26 | 1 | 1 | 1 | 1 | 1 | 1 | 1 | 1 |
| 27 | 1 | 1 | 1 | 1 | 1 | 1 | 1 | 1 |
| 28 | 1 | 1 | 1 | 1 | 1 | 1 | 1 | 1 |
| 29 | 1 | 1 | 1 | 1 | 1 | 1 | 1 | 1 |
| 30 | 1 | 1 | 1 | 1 | 1 | 1 | 1 | 1 |
| 31 | 1 | 1 | 1 | 1 | 1 | 1 | 1 | 1 |
| 32 | 1 | 1 | 1 | 1 | 1 | 1 | 1 | 1 |
| 33 | 1 | 1 | 1 | 1 | 1 | 1 | 1 | 1 |
| 34 | 1 | 1 | 1 | 1 | 1 | 1 | 1 | 1 |
| 35 | 1 | 1 | 1 | 1 | 1 | 1 | 1 | 1 |
| 36 | 1 | 1 | 1 | 1 | 1 | 1 | 1 | 1 |
| 37 | 1 | 1 | 1 | 1 | 1 | 1 | 1 | 1 |
| 38 | 1 | 1 | 1 | 1 | 1 | 1 | C16 | C17 |
| 39 | C18 | C19 | C20 | C21 | T1 | T2 | T3 | T4 |

3.5 Coding

In the following clauses, the coding of the frames is described. Any spare or not used control bits should be coded binary "1".

For all frame types the octet 0, 1 and the first bit of octets 2, 4, 6, 8, ... 38 are used as frame sync.

3.5.1 Coding of Frames for Speech Services

3.5.1.1 Coding of Frames for Full Rate and Enhanced Full Rate Speech

3.5.1.1.1 Coding of Control bits (C-bits)

| Description | Uplink | Downlink |
|---|---|---|
| Frame type (Bits C1 - C5). FR EFR | C1C2C3C4 C5 Speech: 0 0 0 1 0. Speech: 1 1 0 1 0 | C1C2C3C4 C5 Speech: 1 1 1 0 0 Speech: 1 1 0 1 0 |
| Time Alignment (Bits C6 - C11) | Binary number indicating the required timing adjustment to be made in steps of 250/500 μs. The following values apply for the coding C6C7 . . . C11 0 0 0 0 0 0 No change in frame timing 0 0 0 0 0 1 Delay frame 1 x 500 μs 0 0 0 0 1 0 Delay frame 2 x 500 μs : : : .. : : : .. 1 0 0 1 1 1 Delay frame 39 x 500 μs 1 0 1 0 0 0 Not used : : : .. 1 1 1 1 0 1 Not used 1 1 1 1 1 0 Delay frame 1 x 250 μs 1 1 1 1 1 1 Advance frame 250 μs | Binary number indicating the timing adjustment made. |
| Frame indicators. The definition and coding of these indicators are given in GSM 06.31. | C12: BFI 0 : BFI = 0 1 : BFI = 1 | C12 - C15: Spare IF FR. Speech |
| Bits C12 - C16 | C13 C14: SID 0 0 :SID = 0 0 1 :SID = 1 1 0 :SID = 2 | ELSE C12: UFE 0 :UFE=0 bad uplink frame 1 : UFE=1 good up-link frame |
| Downlink Uplink Frame Error (UFE) C12 (see clause 4.8.3) | C15: TAF 0 : TAF = 0 1 : TAF = 1 | C13 - C15: spare |
| | C16: Spare | C16: SP 0 : SP = 0 1 : SP = 1 |
| DTX indicator | C17: DTXd 0 : DTX not applied 1 : DTX applied | C17: Spare |
| Bits C18 - C21 | Spare | Spare |

3.5.1.1.2 Coding of Data Bits (D-bits)

For Full Rate Speech:

Bits D1 .. D260: Speech block transferred in the same order as output from the transcoder (see GSM 06.10).

For Enhanced Full Rate Speech:

The speech block is subdivided in five subsets. The order within a given subset is the same as output from the transcoder (see ETS 300 726, GSM 06.60). Three parity bits are added at the end of each sub-set.

These parity bits are added to the bits of the subset, according to a degenerate (shortened) cyclic code using the generator polynomial:

$$g(D) = D^3 + D + 1$$

The encoding of the cyclic code is performed in a systematic form which means that, in GF(2), the polynomial:

$$d(m)D^n + d(m+1)D^{n-1} + \dots + d(m+n-3)D^3 + p(0)D^2 + p(1)D + p(2)$$

where $p(0)$, $p(1)$, $p(2)$ are the parity bits, when divided by $g(D)$, yields a remainder equal to:

$$1 + D + D^2$$

For every CRC, the transmission order is $p(0)$ first followed by $p(1)$ and $p(2)$ successively.

| | | |
|-------------------|---|--|
| Bit D1 | : | spare (binary "1"). |
| Bits D2...D39 | : | Indexes of the LSF submatrices. |
| Bits D40...D42 | : | CRC over bits D1 to D22, D25 to D27 and D29. |
| Bits D43...D95 | : | Indexes of the parameters of first sub-frame. |
| Bits D96...D98 | : | CRC over bits D43 to D52, D91 and D92. |
| Bits D99...D148 | : | Indexes of the parameters of second sub-frame. |
| Bits D149...D151: | : | CRC over bits D99 to D103, D105, D144 and D145. |
| Bits D152...D204: | : | Indexes of the parameters of third sub-frame. |
| Bits D205...D207: | : | CRC over bits D152 to D161, D200 and D201. |
| Bits D208...D257: | : | Indexes of the parameters of fourth sub-frame. |
| Bits D258...D260: | : | CRC over bits D208 to D212, D214, D253 and D254. |

3.5.1.1.3 Time Alignment Bits (T1...T4)

Bits T1 .. T4: Bits positioned at the end of the downlink frames. If the timing of the frame is to be advanced 250 μ s, these 4 bits are not transferred in order to reduce the frame length accordingly. When transferred the bits are set to binary "1".

3.5.1.2 Coding of Frames for Adaptive Multi-Rate Speech

3.5.1.2.1 Coding of Control bits (C-bits)

| Control Bits | Description Uplink | Description Downlink |
|-----------------|--|--|
| C1...C5 | Frame_Type (Codec_Type) | Frame_Type (Codec_Type) |
| C6...C11 | Time Alignment Command (TAC) or Phase Alignment Control (PAC) or TFO Information or Handover Information | Time Alignment Command (TAC) or Phase Alignment Control (PAC) or TFO Information or Handover Information |
| C12 | Request or Indication Flag (RIF) | Request or Indication Flag (RIF) |
| C13 | spare, set to 1 | Uplink Frame Error (UFE) |
| C14 . C15 . C16 | Config_Prot | Config_Prot |
| C17 . C18 | Message_No | Message_No |
| C19 | DTX in downlink requested (DTXd) | spare, reserved for TFO (see 08.62) |
| C20 | TFO Enabled (TFOE) | spare, reserved for TFO (see 08.62) |
| C21 . C22 | Frame_Classification, Rx_Type | Frame_Classification, Tx_Type |
| C23 . C24 . C25 | Codec_Mode_Indication (RIF == 0) or Codec_Mode_Request (RIF == 1) or 0.0.0 (Frame_Classification == 0.0) | Codec_Mode_Indication (RIF == 0) or Codec_Mode_Request (RIF == 1) or 0.0.0 (Frame_Classification == 0.0) |

Detailed Description:

Frame Type:

The coding of the Frame_Type (also called "Codec_Type") for AMR is identical in uplink and downlink.

C1...C5:

0.0.1.1.0: Adaptive Multi-Rate Codec.

Time Alignment Field:

The Time Alignment Field (Bits C6...C11) is used to carry either the Time Alignment Command (TAC), the Phase Alignment Control (PAC) or the TFO and Handover Information. The Time Alignment Command is coded as for the Full Rate and Enhanced Full Rate (clause 3.5.1.1.1).

Time Alignment Command (TAC):

In the uplink direction (BTS to TRAU) the TAC indicates the required timing adjustment for the downlink TRAU frame to be made by the TRAU in 250/500µs steps.

C6...C11:

0.0.0.0.0.0No change in frame timing

0.0.0.0.0.1Delay frame 1 x 500µs (send four additional T-Bit-pairs after the end of the TRAU Frame)

0.0.0.0.1.0Delay frame 2 x 500µs (send eight additional T-Bit-pairs after the end of the TRAU Frame)

...

1.0.0.1.1.1Delay frame 39 x 500µs (send 156 additional T-Bit-pairs after the end of the TRAU Frame)

(1.0.1.0.0.0 to 1.1.0.1.1.1: 16 code-points, unused, reserved)

(1.1.1.0.0.0 to 1.1.1.0.1.1: 4 code-points, reserved for TFO and Handover Information)

(**1.1.1.0.0.0** reserved for Handover Information)

(**1.1.1.0.0.1** reserved for AMR CMI/CMR Phase Alignment Command (PAC), no change in frame timing)

1.1.1.1.1.0Delay frame by 250µs (send two additional T-Bit-pairs after the end of the TRAU Frame)

1.1.1.1.1.1Advance frame by 250µs (do not send the two T-Bit-pairs at the end of the TRAU Frame).

Phase Alignment Command (PAC) (useful when TFO is not supported or disabled):

The Phase Alignment Command (PAC) can be used by the BTS to command the TRAU to change (invert) the phase of CMI/CMR, respectively RIF, in downlink TRAU frames, see clause 4.6.1.2.1.

C6...C11:

1.1.1.1.0.1AMR CMI/CMR Phase Alignment Command (PAC), no change in frame timing.

In No_Speech frames the Phase Alignment Command may optionally be transmitted by one additional bit (PAB, see subclause 3.5.1.2.2) that allows a direct time and phase alignment in one step.

TFO Information (recommended when TFO is supported, see GSM 08.62):

C6...C11

1.1.1.0.0.0

1.1.1.0.0.1

1.1.1.0.1.0

These three codes are reserved for Tandem Free Operation (see GSM 08.62). They result in no change in frame timing.

If the BTS does not support TFO or TFO is disabled these codes shall not be used. The procedure to exchange this information between BTS and TRAU is described in GSM 08.62.

Handover Information (recommended when Pre-Handover Warning is supported):

C6...C11:

1.1.1.0.1.1 Handover_Soon Handover is to be expected soon.

1.1.1.1.0.0 Handover_Complete

These codes are used, if the BSC and BTS support Pre-Handover Warning. They result in no change in frame timing.

The BTS shall repeat this information as long as it is valid in every frame where no other information has to be transmitted in the Time Alignment Field. The TRAU shall not reflect or acknowledge it. The procedure to exchange this information in case of TFO is described in GSM 08.62.

Request or Indication Flag (RIF):

This flag indicates the phase of the Codec_Mode_Indication (RIF == 0) respectively the Codec_Mode_Request (RIF == 1). It has the same meaning in uplink and in downlink. Typically this flag toggles every frame. Exceptions may occur at handover and CMI/CMR phase alignment, see clause 4.6.1.2.1.

Uplink Frame Error (UFE):

In downlink the UFE indicates that the most recently received uplink TRAU frame had detectable errors.

In uplink this bit shall be set to "1".

UFE == 0: "Uplink Frame received with Errors";

UFE == 1: "Uplink Frame received without Errors".

Note: the UFE is not related to the frame classification (Rx_Type) as computed by the BTS radio receiver. It is related to inconsistencies in the TRAU frame synchronization, control bits or CRCs within the TRAU frame.

Config_Prot

This field is reserved for the Configuration Protocol in case of Tandem Free Operation (see GSM 08.62). If the BTS does not support TFO or TFO is disabled, then this field shall be set to "0.0.0".

Message_No

This field is reserved for the Configuration Protocol in case of Tandem Free Operation (see GSM 08.62). If the BTS does not support TFO or TFO is disabled, then this field shall be set to "0.0".

DTX in downlink requested (DTXd)

See clause 4.6.2.2.

TFO Enabled (TFOE)

This bit enables or disables Tandem Free Operation in the TRAU. If the BTS does not support TFO or TFO is disabled, then this bit shall be set to "0". Coding:

TFOE == 0: TFO Disabled;

TFOE == 1: TFO Enabled.

Frame_Classification:

This field classifies the contents of the TRAU frame as seen by the radio receiver, see GSM 06.93:

C21...C22:

| | | | |
|---|---|-------------------|---|
| 1 | 1 | "Speech_Good" | the frame can be decoded without restriction |
| 1 | 0 | "Speech_Degraded" | the frame might contain undetected errors |
| 0 | 1 | "Speech_Bad" | the frame contains errors that can not be corrected |
| 0 | 0 | "No_Speech" | the frame is not a speech frame, see below. |

In the uplink direction the Frame_Classification is also called "Rx_Type" and is always set by the BTS.

In the downlink direction the Frame_Classification is also called "Tx_Type".

If Tandem Free Operation is not ongoing, then the codes "Speech_Degraded", and "Speech_Bad" shall not be used in the downlink direction. If Tandem Free Operation is ongoing, then all codes may be used in the downlink direction. For the handling within the downlink BTS, see GSM 08.62).

Codec_Mode_Indication / Codec_Mode_Request:

This 3-bit field has three different meanings, depending on the Frame_Classification field and the Request_or_Indication_Flag (RIF):

If Frame_Classification is different than "0.0" then this field contains

either the Codec_Mode_Indication (CMI), if RIF equals 0;

or the Codec_Mode_Request (CMR), if RIF equals 1.

If Frame_Classification is equal to "0.0", i.e. when a No_Speech frame is transmitted, then this field shall be set to "0.0.0". CMI and CMR are then simultaneously transmitted in the Data Bits.

The coding is identical in uplink and downlink.

C23 . C24. C25:

| | | | |
|---|---|---|------------------------|
| 0 | 0 | 0 | Codec_Mode 4,75 kBit/s |
| 0 | 0 | 1 | Codec_Mode 5,15 kBit/s |
| 0 | 1 | 0 | Codec_Mode 5,90 kBit/s |
| 0 | 1 | 1 | Codec_Mode 6,70 kBit/s |
| 1 | 0 | 0 | Codec_Mode 7,40 kBit/s |
| 1 | 0 | 1 | Codec_Mode 7,95 kBit/s |
| 1 | 1 | 0 | Codec_Mode 10,2 kBit/s |
| 1 | 1 | 1 | Codec_Mode 12,2 kBit/s |

The CMI indicates the Codec_Mode to be used for decoding the associated speech parameters in the same and the next frame. The CMR indicates the Codec_Mode to be used for encoding in the opposite direction.

NOTE 1: In the TRAU frames, the Codec_Mode_Request, respectively the Codec_Mode_Indication are coded absolutely (three bits for eight possible modes). On the radio interface, because of bandwidth limitation, these parameters are coded with two bits only. The CCU shall perform the required translation.

NOTE 2: In case of no Tandem Free Operation the uplink CMR is a Codec_Mode_Command (CMC) from the BTS to the TRAU and the TRAU shall try to follow the command as soon as possible. The only allowed exception is in case of DTX when SID or No_Data frames can be used during speech pauses. In the downlink direction the CMR shall be set by the TRAU to "1.1.1".

NOTE 3: In case of an ongoing Tandem Free Operation, the local uplink CMR is an indication from the local BTS to the TRAU, respectively to the distant BTS, on the highest allowed Codec_Mode in the local downlink direction. This indication must be combined with the corresponding CMR in the distant uplink direction to set the Codec Mode to use in that direction. The local downlink CMR is the indication from the distant radio link on the highest allowed Codec_Mode in the distant downlink direction. This indication must be combined with the corresponding CMR for the local uplink direction, see GSM 05.09 and 08.62.

3.5.1.2.2 Coding of Data bits (D-bits)

In Codec_Mode 10,2 kBit/s the bits D1...D20 and D234...D253 are reserved for Tandem Free Operation In all Codec_Modes below 10,2 kBit/s and in all No_Speech frames the bits D1...D31 (31 bits) and D203...D256 (54 bits) are reserved for Tandem Free Operation (see GSM 08.62).

In No_Speech frames additionally bits D44...D57 (14 bits) are reserved for TFO as well.

If the BTS does not support TFO or TFO is disabled, then the bits in these fields shall all be set to "1".

Coding of Speech Frames:

The contents of the Data bits for all eight AMR Codec_Modes are defined in the following, in cases when the Frame_Classification is either set to Speech_Good, Speech_Degraded, or Speech_Bad. The speech block is subdivided into four subsets. The order within a given subset is the same as output from the transcoder (see GSM 06.90). The four times three parity bits (CRC1 to CRC4), added at the end of each subset, are generated using the same cyclic code as defined for the Enhanced Full Rate (see clause 3.5.1.1.2). The TRAU frame formats in uplink and downlink direction are identical.

AMR_Mode 12,2 kBit/s, see GSM 06.90:

| | |
|--------------|---|
| D1...D38: | Indexes of the LSF submatrices (s1...s38) |
| D39...D91: | Indexes of the parameters of first sub-frame (s39...s91) |
| D92...D94: | CRC1 over bits C1...C25, s1...s29, s39...s50, s87...s89. |
| D95...D144: | Indexes of the parameters of second sub-frame (s92...s141) |
| D145...D147: | CRC2 over bits s92...s100, s137...s139. |
| D148...D200: | Indexes of the parameters of third sub-frame (s142...s194) |
| D201...D203: | CRC3 over bits s142...s153, s190...s192. |
| D204...D253: | Indexes of the parameters of fourth sub-frame (s195...s244) |
| D254...D256: | CRC4 over bits s195...s199, s201...s203, s240...s242. |

AMR_Mode 10,2 kBit/s, see GSM 06.90:

| | |
|--------------|---|
| D21...D46: | Indexes of the LSF submatrices (s1...s26) |
| D47...D92: | Indexes of the parameters of first sub-frame (s27...s72) |
| D93...D95: | CRC1 over bits C1...C25, D1...D20, s1...s25, s27...s34, s66, s67, s69, s70. |
| D96...D138: | Indexes of the parameters of second sub-frame (s73...s115) |
| D139...D141: | CRC2 over bits s73...s76, s109, s110, s112, s113. |
| D142...D187: | Indexes of the parameters of third sub-frame (s116...s161) |
| D188...D190: | CRC3 over bits s116...s123, s155, s156, s158, s159. |
| D191...D233: | Indexes of the parameters of fourth sub-frame (s162...s204) |
| D254...D256: | CRC4 over bits s162...s165, s198, s199, s201, s202, D234...D253. |

AMR_Mode 7,95 kBit/s, see GSM 06.90:

| | |
|--------------|---|
| D32...D58: | Indexes of the LSF submatrices (s1...s27) |
| D59...D92: | Indexes of the parameters of first sub-frame (s28...s61) |
| D93...D95: | CRC1 over bits C1...C25, s1...s35, s53, s54, s57, s60. |
| D96...D127: | Indexes of the parameters of second sub-frame (s62...s93) |
| D128...D130: | CRC2 over bits s62...s65, s85, s86, s89...s92. |
| D131...D164: | Indexes of the parameters of third sub-frame (s94...s127) |
| D165...D167: | CRC3 over bits s94...s101, s119, s120, s123...s126. |
| D168...D199: | Indexes of the parameters of fourth sub-frame (s128...s159) |
| D200...D202: | CRC4 over bits s128...s131, s151, s152, s155...s158. |

AMR_Mode 7,40 kBit/s, see GSM 06.90:

| | |
|--------------|---|
| D32...34 | spare (3 bits); set to "1" |
| D35...D60: | Indexes of the LSF submatrices (s1...s26) |
| D61...D92: | Indexes of the parameters of first sub-frame (s27...s58) |
| D93...D95: | CRC1: bits C1...C25, s1...s20, s22...s24, s27...s32, s52, s53, s55...s57. |
| D96...D124: | Indexes of the parameters of second sub-frame (s59...s87) |
| D125...D127: | CRC2 over bits s59...s61, s81, s82, s84...s86. |
| D128...D159: | Indexes of the parameters of third sub-frame (s88...s119) |
| D160...D162: | CRC3 over bits s88...s93, s113, s114, s116...s118. |
| D163...D191: | Indexes of the parameters of fourth sub-frame (s120...s148) |
| D192...D194: | CRC4 over bits s120...s122, s142, s143, s145, s146. |
| D195...D202: | spare (8 bits); set to "1". |

AMR_Mode 6,70 kBit/s, see GSM 06.90:

| | |
|--------------|--|
| D32...D37: | spare (6 bits); set to "1" |
| D38...D63: | Indexes of the LSF submatrices (s1...s26) |
| D64...D92: | Indexes of the parameters of first sub-frame (s27...s55) |
| D93...D95: | CRC1 over bits C1...C25, s1...s17, s20, s24, s27...s34, s49...s53. |
| D96...D120: | Indexes of the parameters of second sub-frame (s56...s80) |
| D121...D123: | CRC2 over bits s56...s59, s74...s78. |
| D124...D152: | Indexes of the parameters of third sub-frame (s81...s109) |
| D153...D155: | CRC3 over bits s81...s88, s103...s107. |
| D156...D180: | Indexes of the parameters of fourth sub-frame (s110...s134) |
| D181...D183: | CRC4 over bits s110...s113, s128...s132. |
| D184...D202: | spare (19 bits); set to "1". |

AMR_Mode 5,90 kBit/s, see GSM 06.90:

| | |
|--------------|--|
| D32...D41: | spare (10 bits); set to "1" |
| D42...D67: | Indexes of the LSF submatrices (s1...s26) |
| D68...D92: | Indexes of the parameters of first sub-frame (s27...s51) |
| D93...D95: | CRC1 over bits C1...C25, s1...s17, s27...s34, s48...s51. |
| D96...D116: | Indexes of the parameters of second sub-frame (s52...s72) |
| D117...D119: | CRC2 over bits s52...s54, s69...s72. |
| D120...D144: | Indexes of the parameters of third sub-frame (s73...s97) |
| D145...D147: | CRC3 over bits s73...s80, s94...s97. |
| D148...D168: | Indexes of the parameters of fourth sub-frame (s98...s118) |
| D169...D171: | CRC4 over bits s98...s100, s115...s118. |
| D172...D202: | spare (31 bits); set to "1". |

AMR_Mode 5,15 kBit/s, see GSM 06.90:

| | |
|--------------|--|
| D32...D46 | spare (15 bits); set to "1" |
| D47...D69: | Indexes of the LSF submatrices (s1...s23) |
| D70...D92: | Indexes of the parameters of first sub-frame (s24...s46) |
| D93...D95: | CRC1 over bits C1...C25, s1...s16, s19...s29, s42...s46. |
| D96...D114: | Indexes of the parameters of second sub-frame (s47...s65) |
| D115...D117: | CRC2 over bits s47...s48, s61...s65. |
| D118...D136: | Indexes of the parameters of third sub-frame (s66...s84) |
| D137...D139: | CRC3 over bits s66...s67, s80...s84. |
| D140...D158: | Indexes of the parameters of fourth sub-frame (s85...s103) |
| D159...D161: | CRC4 over bits s85...s86, s99...s103. |
| D162...D202: | spare (41 bits); set to "1". |

AMR_Mode 4,75 kBit/s, see GSM 06.90:

| | |
|--------------|--|
| D32...D44: | spare (13 bits); set to "1" |
| D45...D67: | Indexes of the LSF submatrices (s1...s23) |
| D68...D92: | Indexes of the parameters of first sub-frame (s24...s48) |
| D93...D95: | CRC1 over bits C1...C25, s1...s16, s18, s19, s21...s29, s45...s48. |
| D96...D108: | Indexes of the parameters of second sub-frame (s49...s61) |
| D109...D111: | CRC2 over bits s49,s50. |
| D112...D132: | Indexes of the parameters of third sub-frame (s62...s82) |
| D133...D135: | CRC3 over bits s62, s63, s79...s82. |
| D136...D148: | Indexes of the parameters of fourth sub-frame (s83...s95) |
| D149...D151: | CRC4 over bits s83, s84. |
| D152...D202: | spare (51 bits); set to "1". |

Coding of No_Speech Frames:

The following tables define the contents of the Data bits when the Frame_Classification is set to "No_Speech". The three parity bits (CRC1) added are generated using the same cyclic code as defined for the Enhanced Full Rate (see clause 3.5.1.1.2). The TRAU Frame Formats in uplink and downlink direction are identical.

SID_Update and SID_Bad Frame:

| | |
|-------------|--|
| D32...D34: | No_Speech_Classification |
| D35...D37: | Codec_Mode_Indication_abs |
| D38...D40: | Codec_Mode_Request_abs |
| D41: | PAB: Phase Alignment Bit (optional) |
| D42...D43: | TAE: Time Alignment Extension (optional) |
| D44...D57: | reserved for TFO |
| D58...D60: | Moving average predictor, initial values (s1...s3) |
| D61...D86: | Indexes of LSF submatrices (s4...s29) |
| D87...D92: | Logarithmic frame energy (s30...s35) |
| D93...D95: | CRC1 over bits C1...C25, D32...D92. |
| D96...D207: | spare (112 bits); set to "1". |

No_Data, SID_First and Onset Frame:

| | |
|------------------|--|
| Bits D32...D34: | No_Speech_Classification |
| Bits D35...D37: | Codec_Mode_Indication_abs |
| Bits D38...D40: | Codec_Mode_Request_abs |
| Bit D41: | PAB: Phase Alignment Bit (optional) |
| Bits D42...D43: | TAE: Time Alignment Extension (optional) |
| Bits D44...D57: | reserved for TFO |
| Bits D58...D92: | spare (35 bits); set to "1" |
| Bits D93...D95: | CRC1 over bits C1...C25, D32...D92. |
| Bits D96...D207: | spare (112 bits); set to "1". |

No_Speech_Classification:

If the Frame_Classification is set to "0.0", then the TRAU frame contains no speech parameters. The No_Speech_Classification is coded in the D-Bits:

| | |
|------------|--|
| D32...D34: | |
| 1.1.1: | Sid_First |
| 1.1.0: | Onset |
| 1.0.1: | Sid_Update |
| 1.0.0: | Sid_Bad (SID_Update with bad parameters) |
| 0.1.1: | spare |
| 0.1.0: | spare |
| 0.0.1: | spare |
| 0.0.0: | No_Data (nothing received or frame has been stolen, e.g. by FACCH or RATSCCH). |

Codec Mode Indication abs (CMI abs):

The meaning in uplink and downlink is identical. In No_Speech frames the CMI is always transmitted, independent of the setting of the RIF bit. Coding:

D35 . D36 . D37:

| | |
|-------|------------------------|
| 0.0.0 | Codec_Mode 4,75 kBit/s |
| 0.0.1 | Codec_Mode 5,15 kBit/s |
| 0.1.0 | Codec_Mode 5,90 kBit/s |
| 0.1.1 | Codec_Mode 6,70 kBit/s |
| 1.0.0 | Codec_Mode 7,40 kBit/s |
| 1.0.1 | Codec_Mode 7,95 kBit/s |
| 1.1.0 | Codec_Mode 10,2 kBit/s |
| 1.1.1 | Codec_Mode 12,2 kBit/s |

Codec Mode Request abs (CMR abs):

The meaning in uplink and downlink is identical. In No_Speech frames the CMR is always transmitted, independent of the setting of the RIF bit. Coding:

D38 . D39 . D40:

| | |
|-------|------------------------|
| 0.0.0 | Codec_Mode 4,75 kBit/s |
| 0.0.1 | Codec_Mode 5,15 kBit/s |
| 0.1.0 | Codec_Mode 5,90 kBit/s |
| 0.1.1 | Codec_Mode 6,70 kBit/s |
| 1.0.0 | Codec_Mode 7,40 kBit/s |
| 1.0.1 | Codec_Mode 7,95 kBit/s |
| 1.1.0 | Codec_Mode 10,2 kBit/s |
| 1.1.1 | Codec_Mode 12,2 kBit/s |

Phase Alignment Bit (PAB):

This bit is defined only in No_Speech frames. It is optional and shall be set to "0", if not used.

The PAB has exactly the same meaning and function as the Phase Alignment Command (PAC). For the exact procedure see clause 4.6.1.2.1.

PAB set to 0: CMI/CMR phase in downlink TRAU frames shall not be changed

PAB set to 1: CMI/CMR phase in downlink TRAU frames shall be inverted.

PAB shall only be used together with TAC values between **0.0.0.0.0** ("No change in frame timing") and **1.0.0.1.1.1** ("Delay frame 39 x 500µs").

Time Alignment Extension (TAE):

The TAE specifies optionally a Time Alignment Extension. Coding:

| | |
|------------|--|
| D42 . D43: | Meaning: |
| 0.0: | No additional delay with respect to the Time Alignment Command |
| 0.1 | Additional delay of 125 µs |
| 1.0 | Additional delay of 250 µs |
| 1.1 | Additional delay of 375 µs |

TAE together with the Time Alignment Command (TAC) allow a "one step" time alignment of 125 µs accuracy in No_Speech frames. TAE shall only be used together with TAC values between **0.0.0.0.0** ("No change in frame timing") and **1.0.0.1.1.1** ("Delay frame 39 x 500µs").

The TAC_TAE combination **0.0.0.0.0_0.1** shall be interpreted as "Delay frame by 125µs".

The TAC_TAE combination **1.0.0.1.1.1_1.0** shall be interpreted as "Advance frame by 250µs".

The TAC_TAE combination **1.0.0.1.1.1_1.1** shall be interpreted as "Advance frame by 125µs".

3.5.1.2.3 Time Alignment Bits (T1...T4)

The coding and meaning is as described in 3.5.1.1.3 (Time Alignment Bits).

3.5.2 Coding of O&M Frames

Control bits (C-bits):

| Description | Uplink | Downlink |
|----------------------------|--------------------------------|--------------------------------|
| Frame type Bits C1 - C5 | C1C2C3C4 C5 0 0 1 0 1 : O&M | C1C2C3C4 C5 1 1 0 1 1 : O&M |
| Bits C6 - C15 | Spare | Spare |

Data Bits (D-bits):

Bits D1 .. D264: Bits used for transfer of O&M information. The coding and use of these bits are left to the manufacturer of the BSC/TRAU.

Spare Bits:

Bits S1 .. S6: Spare

3.5.3 Coding of Data Frames

Control bits (C-bits):

| Description | Uplink | Downlink |
|---|---|--|
| Frame type. Bits C1 - C5 | C1C2C3C4 C5 0 1 0 0 0 : Data except 14.5 1 0 1 0 0 : Data14.5 (note) | C1C2C3C4 C5 1 0 1 1 0 : Data except 14.5 1 0 1 0 0 : Data 14.5 (note) |
| Intermediate RA bit rate. Bit C6 for data services except 14.5 Spare for Data 14.5 | 0: 8 kbit/s 1: 16 kbit/s Spare | 0: 8 kbit/s 1: 16 kbit/s Spare |
| Bits C7 - C15 | Spare | Spare |
| NOTE: The Data frame is in case of data 14.5 kbit/s used only for synchronization purposes. The data bits are in this case set according to clause 4.5.1. | | |

3.5.4 Coding of Extended Data Frames

Control bits (C-bits):

| Description | Uplink | Downlink |
|--|--|---|
| Frame type. Bits C1 - C5 | C1C2C3C4 C5 1 1 1 1 1 : Extended Data frame 14.5 kbit/s | C1C2C3C4 C5 1 1 1 1 1 : Extended data Frame 14.5 |
| Bit C6 Idle/Data/UFE | Idle/data Frame indication | UFE |
| Bits C7 - C13 | Spare | Bit C7 indicating idle/data frame. Bit C8-C13 spare |
| Multi Frame Structure defined in GSM 04.21 Bits M1, M2 | M1, M2 | M1, M2 |

3.5.5 Coding of Idle Speech Frames

Control bits (C-bits):

| Description | Uplink | Downlink |
|-----------------------------|--|--|
| Frame type. Bits C1 - C5 | C1C2C3C4 C5 1 0 0 0 0 : Idle Speech | C1C2C3C4 C5 0 1 1 1 0 : Idle Speech |
| Bits C6 - C21 | Coding as for Speech frames. | Coding as for Speech frames. |

NOTE: Idle Speech frames shall not be used in AMR; instead Frame_Classification set to "No_Data" shall be applied.

Time Alignment Bits:

Bits T1 .. T4: Coding as for Speech frames.

3.6 Order of Bit Transmission

The order of bit transmission is:

The first octet is transferred first with the bit no. 1 first, bit no. 2 next etc.

4 Procedures

4.1 Remote Control of Transcoders and Rate Adaptors

When the transcoder is positioned remote to the BTS, the Channel Codec Unit (CCU) in the BTS has to control some of the functions in the remote Transcoder/Rate Adaptor Unit (TRAU) in the BSC.

This remote control is performed by inband signalling carried by the control bits (C-bits) in each TRAU frame.

The following functions in the TRAU are remotely controlled by the CCU:

- Shift between speech and data.
- Control of the rate adaption functions for data calls.
- Downlink frame timing for speech frames.
- Transfer of DTX information.

In addition, the following functions are provided in case of AMR speech:

- Control of Codec Mode adaptation
- Transfer of TFO Configuration Parameters (optional, see GSM 08.62)
- Downlink Phase Alignment (optional)
- Transfer of Information on TFO Status (optional, see GSM 08.62)
- Transfer of Information on Pre-Handover Warning (optional)

In addition, the inband signalling also provides means for transfer of O&M signals between the TRAU and the BSC/BTS.

4.2 Resource Allocation

At reception of the ASSIGNMENT REQUEST message, e.g. at call setup, when a circuit switched connection is required, the BSC provides an appropriate TRAU to the circuit to be used between the BSC and the BTS and sends the CHANNEL ACTIVATION message to the BTS.

When receiving the CHANnel ACTIVation message, the BTS allocates the appropriate radio resources and a Channel Codec Unit (CCU) to be used.

In case of FR and EFR Speech or Data (except 14.5 kbit/s):

- The CCU now starts sending uplink frames with the appropriate "Frame Type" and, for data calls, the intermediate rate adaption bit rate set.
- When receiving the first frame, the TRAU sets the mode of operation accordingly and starts sending downlink frames with the "Frame Type" and, for data calls, the intermediate rate adaption bit rate set as an acknowledgement indication.

In case of Adaptive Multi-Rate speech: see clause 4.6.1.3.

In case of Data 14.5 kbit/s:

- The CCU starts sending uplink Data TRAU Frames with the appropriate "Frame Type" set to establish initial synchronization.
- When receiving the first frame, the TRAU sets the mode of operation accordingly and as an acknowledgement starts sending downlink Data TRAU Frames with the same "Frame Type".
- The CCU starts sending uplink Extended Data TRAU Frames with the appropriate "Frame Type" set upon reception of that acknowledged indication.
- When receiving the first frame, when the "Frame Type" is set to Extended Data TRAU frame, the TRAU sets the mode of operation accordingly and as an acknowledgement starts sending downlink Extended Data TRAU frames with the same "Frame Type".

4.3 Resource Release

At release of circuit switched resources, e.g. at call release, the connection between the CCU and the TRAU will be released by the BSC. The BSC has to indicate that the connection has been released. How this is performed is a BSC internal matter. However, three methods have been identified.

- i) The BSC indicates the call release to the TRAU by inserting the PCM idle bit pattern described in GSM 08.54 on the circuits towards the TRAU. The TRAU shall be able to detect this idle bit pattern. When received at the TRAU, the TRAU will lose frame synchronization and will start timer Tsync (see clause 4.8.2). If, when Tsync expires, the idle bit pattern has been detected, the TRAU shall terminate the operation (go idle) until a valid frame is again received.
- ii) This second alternative does not apply to Enhanced Full Rate Speech, Adaptive Multi-Rate speech and Data 14.5 kbit/s cases.

After a call release, the TRAU downlink channel is switched to the TRAU uplink channel (16 kbit/s side).

The TRAU shall be able to detect the looped downlink frame. When it is detected, the TRAU shall terminate the normal operation (go idle) until a valid uplink TRAU frame is again received.

- iii) It is handled by BSC internal signals (e.g. if the BSC and TRAU are collocated).

4.4 In Call Modification

If the subscriber orders "In Call Modification", the CCU sets the "Frame Type" and, for data calls, the intermediate rate adaptation bit rate in the uplink frames to the new mode of operation. When receiving this information, the TRAU changes the mode of operation accordingly and sets the new "Frame Type" and, for data calls, the intermediate rate adaptation bit rate in the downlink frames. The same procedure applies for mode change between Data 14,5 kbit/s.

In case of mode change to data 14,5 kbit/s from Speech or Data (other than 14.5 kbit/s) the same procedure as for "Resource Allocation" is performed.

In case of mode change from any other speech or data service to **AMR speech**, the same procedure as for "Resource Allocation" shall be performed. In case of mode change within AMR speech, i.e. a change of the AMR Configuration, the BSC should take care that a smooth transition from the old AMR configuration into the new one is performed, see GSM 05.09 and GSM 08.62.

4.5 Transfer of Idle Frames, Handling of Missing Data

Between the TRAU and the CCU a TRAU frame shall be transferred every 20 ms.

4.5.1 In Full Rate data case

If no data is received from the MS (uplink direction) or no data is received from the MSC side of the interface (downlink direction), idle data frames shall be transferred instead of data frames. Idle data frames are data frames with all data bit positions set to binary "1". In addition, for data 14,5 kbit/s; the C6 bit shall be set to '1' in the uplink extended data frame. For each idle frame sent downlink for data 14.5 kbit/s the C7 bit is set to '1'.

4.5.2 In Full Rate speech case

If no speech is received from the MS (uplink direction), the CCU shall send TRAU speech frames with BFI flag set to 1 (bad frame) or idle speech frames. If no speech is received from the MSC side of the interface (downlink direction), idle speech frames shall be transferred instead of speech frames.

4.5.3 In Enhanced Full Rate speech case

If no speech is received from the MS (uplink direction), the CCU shall send TRAU speech frames with BFI flag set to 1 (bad frame). If no speech is received from the MSC side of the interface (downlink direction), idle speech frames shall be transferred instead of speech frames.

4.5.4 In Adaptive Multi-Rate speech case

If no speech is received from the MS (uplink direction), or a speech frame is stolen on the radio interface (e.g. by FACCH) the CCU shall send TRAU No_Speech frames with Frame_Type set to "AMR" and with No_Speech_Classification set to "No_Data". The Code_Mode_Indication shall be set to the previously used value. CMI and CMR shall be set to the Initial_Codec_Mode, if at resource allocation.

If no speech is received from the MSC side (downlink direction), i.e. the "PCM_Idle" pattern is received instead, the TRAU shall send TRAU No_Speech frames with Frame_Type set to "AMR", and with No_Speech_Classification set to "No_Data". The Codec_Mode_Indication shall be set to the previously used value or to the Initial_Codec_Mode, if at resource allocation.

4.6 Procedures for Speech Services

4.6.1 Time Alignment of Speech Service Frames

The time alignment needed for obtaining minimum buffer delay will differ from call to call. The reasons for this are:

- The BSC will have no information about the radio timing at the BTS, and will start sending frames at an arbitrary or default time. Each TRAU frame is 320 bits (20 ms) long and will in the worst case be received at the BTS 318 bits out of phase.
- The different timeslots on one carrier are sent at different times (max 4.04 ms which equals 7 timeslots in a TDMA radio frame).
- Different channels may be transferred on different transmission systems using different routes in the network. The transmission delay may therefore differ.

The required time alignment between radio frames and TRAU frames is considered to be an internal BTS matter for uplink frames. However, the buffer delay for these frames should be kept to a minimum.

For downlink frames, the procedures in the following clauses should apply. In order to describe the time alignment procedure in the TRAU, two time alignment states are described (Initial Time Alignment state and Static Time Alignment state).

In order to achieve optimum timing between the radio TDMA frames and the frames on the Abis transmission side, the speech coding and decoding functions in the transcoder should not be synchronized.

4.6.1.1 Initial Time Alignment State

The TRAU shall enter the Initial Time Alignment state at the switching-on of the system, when it goes idle (e.g. when receiving the PCM idle pattern after a call release as described in clause 4.3), if loss of frame synchronization is detected, in call modification from data to speech is performed or if BSS internal handover is detected.

In the Initial Time Alignment state, the frames shall only be delayed (or no change)(see note). The transcoder is able to adjust the time for transmitting the speech frames in steps of 125 μ s (one speech sample). The CCU calculates the required timing adjustment and returns a frame including the number of 250/500 μ s steps by which the frames in the downlink direction have to be delayed (binary number in the "Time Alignment" field).

When receiving this information, the TRAU processes this data and sets the "Time Alignment" field in the next downlink frame as ordered and then delays the subsequent frame accordingly.

NOTE: If the TRAU, in this state, receives an order to advance the next frame 250 μ s, this order shall be interpreted as "Delay frame 39*500 μ s".

When a frame is delayed due to timing adjustments, the TRAU shall fill in the gap between the frames with the appropriate number of binary "1" (T-bits).

After having adjusted the timing, the TRAU shall receive at least three new frames before a new adjustment is made. This in order to avoid oscillation in the regulation.

The TRAU shall change from the Initial Time Alignment state to the Static Time Alignment state when it has performed two subsequent timing adjustments which are less than 500 μ s (including no change).

The procedure is illustrated in figure 4.1.

Optionally, in case of AMR speech, two additional bits (TAE) may be used in an uplink No_Speech frame to code a time alignment command with a precision of 125 μ s. When receiving this information, the TRAU processes this data and sets the "Time Alignment" field in the next downlink frame as ordered and then delays the subsequent frame accordingly. It needs to send the TAE bits back only if the downlink frame is a No_Speech frame, too.

4.6.1.2 The Static Time Alignment State

In the Static Time Alignment state, the TRAU performs timing adjustments in single steps of 250 μ s or 125 μ s (AMR only). The timing may either be delayed (time alignment code "Delay frame by 250 μ s (125 μ s)"), advanced (time alignment code "Advance frame by 250 μ s (125 μ s)") or not changed (time alignment code "No Change in Time Alignment" or all other codes that result in no change).

When receiving an order for adjusting the timing, the transcoder skips or repeats two (one) speech samples in order to achieve the correct timing.

If the timing is to be advanced 250 μ s (125 μ s), the TRAU sets the "Time Alignment" field in the next downlink frame as ordered and then the 4 (2) last bits of the frame are not transferred (the T-bits).

If the timing is to be delayed, the TRAU sets the "Time Alignment" field in the next downlink frame as ordered and then delays the subsequent frame by adding the appropriate number of binary "1" between the frames.

After having adjusted the timing, the TRAU shall receive at least three new frames before a new adjustment is made.

If, in this state and TFO is not ongoing (see GSM 08.62), the TRAU detects a change in the timing of the uplink frames bigger than $n \times 250 \mu$ s, where $n = 4$, it shall enter the Initial Time Alignment state and in that state it may perform an adjustment on the downlink equal to the change detected on the uplink.

In case of AMR speech the time alignment may be done in steps of 125 μ s by using the TAC and TAE. If TFO is ongoing in case of AMR speech the TRAU shall not perform any time alignment in downlink direction.

4.6.1.2.1 Phase Alignment of Codec_Mode_Indication for AMR

In the Static Time Alignment state for Adaptive Multi-Rate speech, it might be necessary to align the phase of the Codec_Mode_Indication and Codec_Mode_Request as indicated in downlink TRAU frames by the RIF bit, to the phase of CMI / CMR on the radio interface. One of the following four alternative methods shall be applied:

Alternative 1: If TFO is not ongoing (see GSM 08.62), then the CCU may send one "Phase Alignment Command" (PAC) uplink (see 3.5.1.2.1). The TRAU shall send two consecutive TRAU frames with Codec_Mode_Indication (RIF set to "0" two times) and by this shall invert the phase of Codec_Mode_Indication and Codec_Mode_Request in downlink on the Abis/Ater interface (consider the round trip delay).

Alternative 2: Similar to Alternative 1: If TFO is not ongoing (see GSM 08.62), then the CCU may send one No_Speech frame with the Phase Alignment Bit (PAB) set accordingly. This may be done already within the initial time alignment state together with the initial time alignment command (TAC and TAE). By this the DL TRAU frames can be aligned in time and phase within one step to a precision of 125 μ s.

Alternative 3: If TFO is ongoing (see GSM 08.62) no time and phase alignment shall be performed on the Abis/Ater interface. Instead, the CCU shall buffer (up to 40ms) the downlink speech frames, until they can be sent on the radio interface. If the TRAU receives a time or phase alignment command while in TFO it may ignore it.

Alternative 4: The CCU may send a specific RATSCCH Message downlink to the mobile station (see GSM 05.09) and by that invert the phase of the CMI / CMC on the radio interface and thus avoid the buffer delay (20ms). This alternative is especially useful in TFO, but may be used also without TFO.

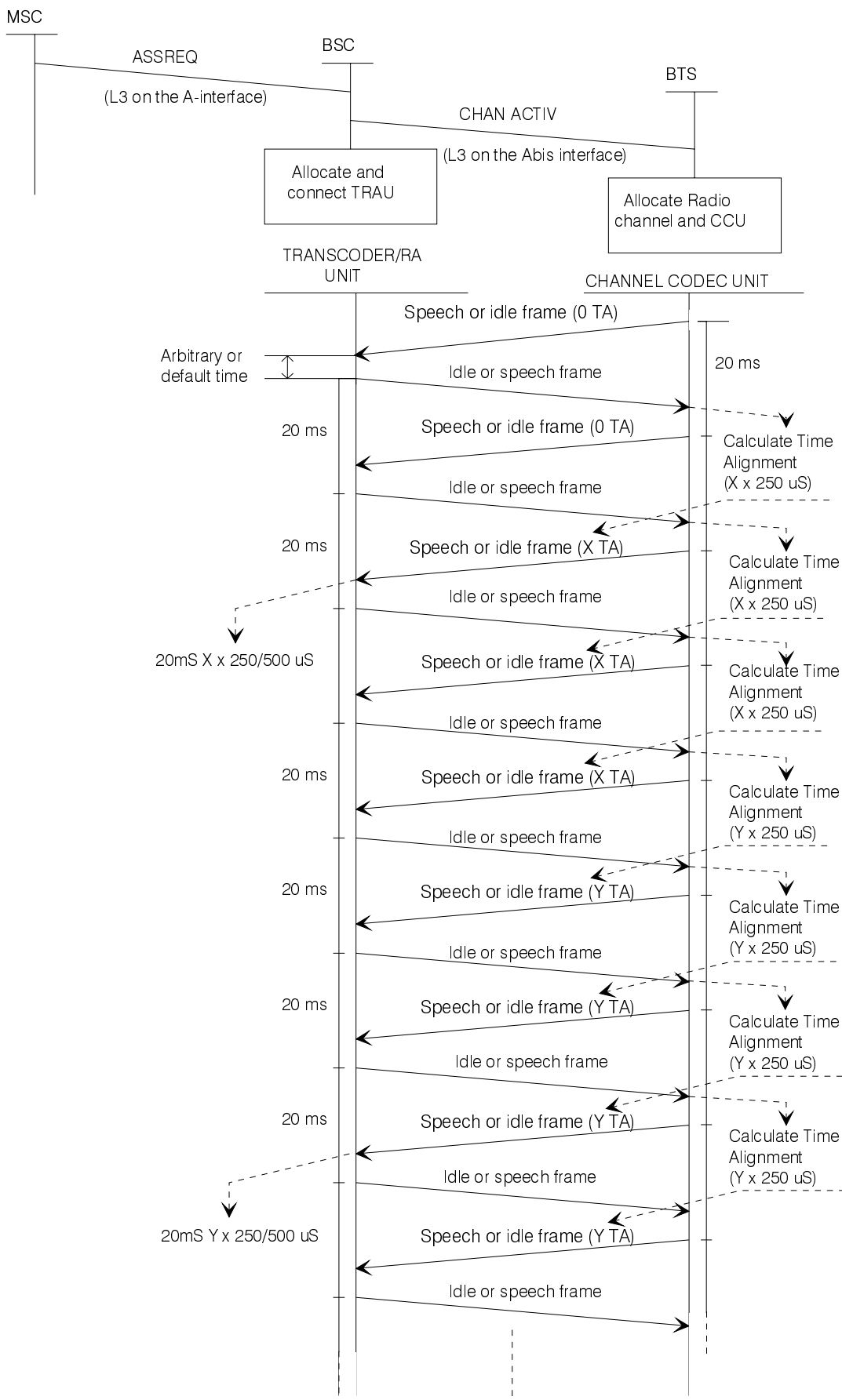


Figure 4.1: Initial Time Alignment procedure

4.6.1.3 Initiation at Resource Allocation

When the BTS receives the CHANNEL ACTIVATION message from the BSC, it allocates the appropriate radio resources and a Channel Codec Unit (CCU). **In case of FR orEFR** the CCU then initiates sending of speech frames (or idle speech frames if speech is not received from the MS) towards the transcoder with normal frame phase for the TDMA channel in question. The "Time Alignment" field in these frames is set to "no change".

The TRAU will now be in the Initial Time Alignment state. When receiving the first frame it shall start sending speech frames (or idle speech frames) towards the BTS with arbitrary or default phase related to the uplink frame phase.

When receiving these frames the CCU calculates the timing adjustment required in order to achieve minimum buffer delay and sets the "Time Alignment" field in the uplink frames accordingly.

The procedures described for the Initial and for the Static Time Alignment states are then followed during the call.

In case of AMR the CCU shall initiate sending of TRAU No_Speech frames towards the transcoder with normal frame phase for the TDMA channel in question unless speech is received on the radio interface. The "Time Alignment" field shall be set to "no change", the TAE shall be set to "0.0" and PAB shall be set to "0". The RIF shall correspond to the phase of the uplink radio interface. The CMI / CMR shall be set to "Initial_Codec_Mode". Consequently, speech transmission will start in uplink and downlink in this mode. In case the BTS supports TFO it shall send the TFO Configuration parameters uplink (see GSM 08.62). The TRAU will now be in the Initial Time Alignment state. When receiving the first UL TRAU frame it shall start sending No_Speech frames (or speech frames, if speech is received from the MSC side) towards the BTS with arbitrary or default phase related to the uplink frame phase. After receiving downlink TRAU frames the CCU may perform time alignment and phase alignment (optionally using TAC, TAE and PAB). The CCU shall keep the Codec_Mode in uplink and downlink fixed to the Initial_Codec_Mode until the correct time and phase alignment in downlink TRAU frames is achieved. Then the Codec_Mode adaptation may be enabled, see also GSM 05.09.

4.6.1.4 Time Alignment During Handover

4.6.1.4.1 BSS External Handover

For BSS external handover, the procedure described in clause 4.6.1.3 should be used by the new BSC/BTS at resource allocation.

4.6.1.4.2 BSS Internal Handover

If TFO is not ongoing and a BSS internal handover has been performed, the timing of the downlink frames may have to be adjusted several steps of 125, 250 or 500 μ s. In order to speed up the alignment of the downlink frames, this must be detected by the TRAU, e.g. by detecting the change in the uplink frame timing as described in clause 4.6.1.2. The TRAU should then enter the Initial Time Alignment state and in that state it may perform an adjustment on the downlink equal to the change detected on the uplink.

In case of AMR, when TFO is ongoing, the BTS shall not send any time alignment or phase alignment commands and the TRAU shall not perform any time or phase alignment in downlink direction. Instead the BTS shall buffer the speech frames accordingly (see clause 4.6.1.2.1, alternative 3). Alternatively the BTS may perform a phase alignment on the radio interface by sending a RATSCCH message (see clause 4.6.1.2.1, alternative 4), thus avoiding the buffer delay (20ms).

Please note that optionally before and after handover the AMR link adaptation should be frozen to the Initial_Codec_Mode, until all necessary time and phase alignments have been performed. CMI and CMC should therefore be identical during that period. Consequently a phase mismatch does not matter until the adaptation is enabled.

4.6.2 Procedures for Discontinuous Transmission (DTX)

The procedures for comfort noise are described in GSM 06.12, for Full rate speech and in GSM 06.62 for Enhanced Full rate speech, the overall operation of DTX is described in GSM 06.31 and in GSM 06.81 for respectively Full rate speech and Enhanced Full rate speech and the Voice Activity Detector is described in GSM 06.32 and GSM 06.82 for respectively Full rate speech and Enhanced full rate speech. The relevant procedures for Adaptive Multi-Rate speech are described in GSM 06.92, GSM 06.93 and GSM 06.94. For the case of DTX in ongoing TFO see GSM 08.62.

The DTX Handler function is considered as a part of the TRAU when remote transcoders are applied. The specification of the DTX Handler is given in GSM 06.31 for Full rate speech, in GSM 06.81 for Enhanced Full Rate speech and in GSM 06.93 for Adaptive Multi-Rate speech.

4.6.2.1 DTX procedures in the uplink direction

In case of the Full Rate and Enhanced Full Rate speech: In all frames in the uplink direction, the BFI (Bad Frame Indicator), the SID (Silence Descriptor) indicator and the TAF (Time Alignment Flag) indicator is set as output from the RSS (see GSM 06.31 and GSM 06.81).

In the comfort noise states, the MS will transmit a new frame only every 480 ms (24 frames). These frames are transferred in the normal way between the CCU and the TRAU. Between these frames the CCU shall transfer uplink idle speech frames in case of Full Rate Speech and speech frames with BFI set to "1" in case of Enhanced Full rate Speech.

In case of the Adaptive Multi-Rate speech all frames are classified by the Rx_Type, see also GSM 06.93. In the comfort noise states, the MS will transmit a new SID_Update frame only about every 160 ms (8 frames). These frames are transferred in the normal way between the CCU and the TRAU. Between these SID_Update frames the CCU and TRAU shall transfer "No_Data" frames uplink.

4.6.2.2 DTX procedures in the downlink direction

To inform the DTX handler in the remote transcoder whether downlink DTX may be applied or not, the DTXd bit (C17 in case of Full Rate and Enhanced Full Rate, C19 in case of Adaptive Multi-Rate) in the uplink speech frame is used. The coding is as follows:

DTXd = 0 : downlink DTX is not applied ("not requested" in case of AMR);

DTXd = 1 : downlink DTX is applied ("requested" in case of AMR).

Though this parameter is linked with the resource allocation in the BTS at call setup, its value may vary during the connection.

In case of Full Rate and Enhanced Full Rate speech in the downlink frames the SP (Speech) indicator is set as output from the TX DTX handler (see GSM 06.31 and GSM 06.81).

If downlink DTX is not used, the SP indicator should be coded binary "1".

In case of the Adaptive Multi-Rate speech all downlink frames are classified by the Tx_Type, see also GSM 06.93. In ongoing TFO, in case the distant side uses uplink DTX, downlink DTX may be applied by the TRAU, although DTXd is set to "not requested". For handling in the downlink BTS see GSM 06.93 and 08.62.

4.7 Procedures for Data Frames

4.7.1 9.6 and 4.8 kbit/s channel coding

When rate adaption to 64 Kbit/s is performed at the BTS (sub-64 kbit/s traffic channels are not used), the rate adaption between the format used on the radio interface and the 64 Kbit/s format is made by the RA1/RA1' and the RA2 function as described in GSM. 08.20. This is illustrated in figure 4.2.

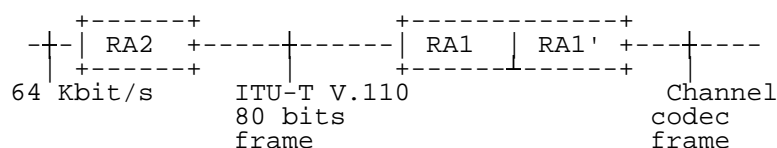


Figure GSM 08.60/4.2: Rate adaption when performed at the BTS.

When sub-64 kbit/s traffic channels are used, up to four data frames are transferred in each TRAU frame. In order to convert between the TRAU frame format and the ITU-T 80 bits frame format an additional intermediate rate adaption function, RAA, is applied. This is illustrated in figure 4.3.

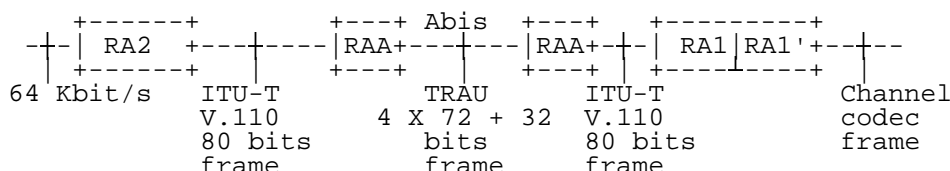


Figure GSM 08.60/4.3: Rate adaption when 16 kbit/s traffic channels are used

4.7.1.1 The RAA Function

The RAA function is used to convert between the ITU-T V.110 80 bits frame format and the TRAU frame format. When going from the V.110 format to the TRAU frame format the first octet (all bits coded binary "0") in the ITU-T V.110 80 bits frame is stripped off. Up to four such frames are then transferred in each TRAU frame as shown in clause 3.3.

When going from the TRAU frame format to the V.110 format the data frames are separated and the synchronization octet (all bits coded binary "0") is again included.

The 80 bits V.110 frame is illustrated in figure 4.4, and the modified 72 bits frame is illustrated in figure 4.5.

| Octet no. | Bit number | | | | | | | |
|-----------|------------|----|---|---|---|---|---|---|
| | 1 | 2 | 3 | 4 | 5 | 6 | 7 | 8 |
| 0 | 0 | 0 | 0 | 0 | 0 | 0 | 0 | 0 |
| 1 | 1 | D1 | X | X | X | X | X | X |
| 2 | 1 | X | X | X | X | X | X | X |
| 3 | 1 | X | X | X | X | X | X | X |
| 4 | 1 | X | X | X | X | X | X | X |
| 5 | 1 | X | X | X | X | X | X | X |
| 6 | 1 | X | X | X | X | X | X | X |
| 7 | 1 | X | X | X | X | X | X | X |
| 8 | 1 | X | X | X | X | X | X | X |
| 9 | 1 | X | X | X | X | X | X | X |

Figure GSM 08.60/4.4: ITU-T V.110 80 bits frame

| Octet no. | Bit number | | | | | | | |
|-----------|------------|----|---|---|---|---|---|---|
| | 1 | 2 | 3 | 4 | 5 | 6 | 7 | 8 |
| 0 | 1 | D1 | X | X | X | X | X | X |
| 1 | 1 | X | X | X | X | X | X | X |
| 2 | 1 | X | X | X | X | X | X | X |
| 3 | 1 | X | X | X | X | X | X | X |
| 4 | 1 | X | X | X | X | X | X | X |
| 5 | 1 | X | X | X | X | X | X | X |
| 6 | 1 | X | X | X | X | X | X | X |
| 7 | 1 | X | X | X | X | X | X | X |
| 8 | 1 | X | X | X | X | X | X | X |

Figure GSM 08.60/4.5: Modified ITU-T V.110 72 bits frame transferred in a TRAU data frame position

4.7.1.2 The RA1/RA1' Function

This function is described in GSM 04.21.

4.7.1.3 The RA2 Function

This function is described in GSM 04.21.

4.7.1.4 Procedures for 8 kbit/s intermediate rate adaption rate

For 8 kbit/s intermediate rate adaption rate up to two data frames are transferred in each TRAU frame. The first data frame is transferred in TRAU data frame position 1 and the subsequent data frame is transferred in TRAU data frame position 3 (see clause 3.3).

In TRAU data frame position 2 and 4, all bits are coded binary "1".

If the data transfer terminates before the TRAU frame has been completed, the remaining data bit positions in the TRAU frame should be coded binary "1".

4.7.1.5 Procedures for 16 kbit/s intermediate rate adaption rate

For 16 kbit/s intermediate rate adaption rate, up to four data frames are transferred in each TRAU frame. The first data frame is transferred in TRAU data frame position 1, the next in data frame position 2 etc.

If the data transfer terminates before the TRAU frame has been completed, the remaining data bit positions in the TRAU frame should be coded binary "1".

4.7.1.6 Support of Non-Transparent Bearer Applications

In GSM 08.20, the procedures for transfer of non-transparent bearer applications are specified. The 240 bit RLP frame is converted to four modified V.110 80 bit frames.

The same conversion is applied when transferred in a TRAU frame. The frames are coded as specified in clauses 4.7.4 and 4.7.5.

4.7.2 14.5 kbit/s channel coding

When rate adaption to 64 Kbit/s is performed at the BTS (sub-64 kbit/s traffic channels are not used), the rate adaption between the format used on the radio interface and the 64 Kbit/s format is as described in GSM 08.20.

When sub-64 kbit/s traffic channels are used, up to eight 36 bits frames are transferred in each E-TRAU frame. In order to convert between the E-TRAU frame format and the 36 bits frame format used for the radio interface an additional intermediate rate adaption function, RA1'/RAA', is applied. This is illustrated in figure 4.3.1 (see also GSM 08.20).

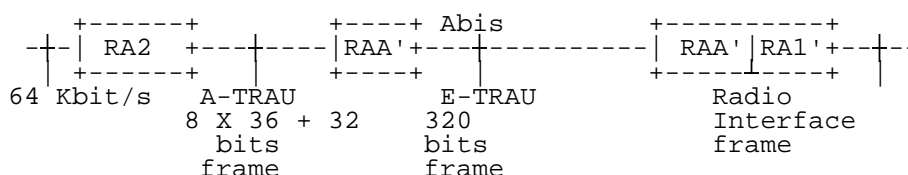


Figure GSM 08.60/4.3.1: Rate adaption when 16 kbit/s traffic channels are used

4.7.2.1 The RAA' Function

See GSM 08.20

4.7.2.2 The RA1'/RAA' Function

This function is described in GSM 08.20.

4.7.2.3 The RA2 Function

This function is described in GSM 04.21.

4.8 Frame Synchronization

4.8.1 Search for Frame Synchronization

The frame synchronization is obtained by means of the first two octets in each frame, with all bits coded binary "0", and the first bit in octet no. 2, 4, 6, 8, ... 38 coded binary "1". The following 35 bit alignment pattern is used to achieve frame synchronization:

```

00000000 00000000 1XXXXXXXX XXXXXXXX 1XXXXXXXX XXXXXXXX 1XXXXXXXX XXXXXXXX
1XXXXXXXX XXXXXXXX 1XXXXXXXX XXXXXXXX 1XXXXXXXX XXXXXXXX 1XXXXXXXX XXXXXXXX
1XXXXXXXX XXXXXXXX 1XXXXXXXX XXXXXXXX 1XXXXXXXX XXXXXXXX 1XXXXXXXX XXXXXXXX
1XXXXXXXX XXXXXXXX 1XXXXXXXX XXXXXXXX 1XXXXXXXX XXXXXXXX 1XXXXXXXX XXXXXXXX
1XXXXXXXX XXXXXXXX 1XXXXXXXX XXXXXXXX 1XXXXXXXX XXXXXXXX 1XXXXXXXX XXXXXXXX

```

4.8.2 Frame Synchronization After Performing Downlink Timing Adjustments

If the timing of the downlink speech frames is adjusted, the adjustment is indicated in bits C6 - C11 as described in clauses 4.6.1.1 and 4.6.1.2. The frame synchronization unit shall change its frame synchronization window accordingly.

4.8.3 Frame Synchronization Monitoring and Recovery

The monitoring of the frame synchronization shall be a continuous process.

Loss of frame synchronization shall not be assumed unless at least three consecutive frames, each with at least one framing bit error, are detected.

In case of Full Rate speech:

If the TRAU loses its frame synchronization it starts a timer $T_{sync} = 1$ second. If T_{sync} expires before frame synchronization is again obtained the TRAU initiates sending of the urgent alarm pattern described in clause 4.10.2.

The exception from this procedure is when "Resource Release" is detected while T_{sync} is running (see clause 4.3). In this case, the procedure in clause 4.3 shall be followed.

If loss of frame synchronization is detected by the CCU it starts a timer T_{sync} . If T_{sync} expires before frame synchronization is again obtained the call shall be released and an indication given to O&M.

T_{sync} is reset every time frame synchronization is again obtained.

In case of Enhanced Full Rate speech and Adaptive Multi-Rate speech:

When it detects a framing bit error, the TRAU uses the control bit UFE (uplink Frame Error) in the next downlink TRAU frame to indicate it to the CCU. When the CCU receives a TRAU frame indicating an Uplink Frame Error and which has no errors on the synchronization pattern and the control bits, it starts a timer T_{syncU} .

If loss of frame synchronization is detected by the CCU it starts a timer T_{syncD} . If T_{syncD} or T_{syncU} expires before frame synchronization is again obtained, the call shall be released as specified in GSM 08.58 with the case field set to " Remote Transcoder Failure".

T_{syncD} is reset every time frame synchronisation is again obtained.

T_{syncU} is reset every time three consecutive TRAU frames are received without Uplink Frame Error indication, without errors on the frame synchronisation pattern and on the control bits.

T_{syncD} and T_{syncU} are parameters set by O&M (default value = 1 second).

In case of Data 14.5 kbit/s:

The following 17 bit alignment pattern of the Extended Data TRAU Frame is used for Frame Synchronization Monitoring:

```
00000000 00000000 1XXXXXXXX XXXXXXXX XXXXXXXX XXXXXXXX XXXXXXXX XXXXXXXX XXXXXXXX
XXXXXXXX XXXXXXXX XXXXXXXX XXXXXXXX XXXXXXXX XXXXXXXX XXXXXXXX XXXXXXXX
XXXXXXXX XXXXXXXX XXXXXXXX XXXXXXXX XXXXXXXX XXXXXXXX XXXXXXXX XXXXXXXX
XXXXXXXX XXXXXXXX XXXXXXXX XXXXXXXX XXXXXXXX XXXXXXXX XXXXXXXX XXXXXXXX
XXXXXXXX XXXXXXXX XXXXXXXX XXXXXXXX XXXXXXXX XXXXXXXX XXXXXXXX XXXXXXXX
```

When it detects a framing bit error, the TRAU uses the control bit UFE (uplink Frame Error) in the next downlink Extended Data TRAU Frame to indicate it to the CCU. When the CCU receives an Extended Data TRAU Frame indicating an Uplink Frame Error and which has no errors on the synchronization pattern and the control bits, it starts a timer TsyncU and TsyncR.

If loss of frame synchronization is detected by the CCU it starts a timer TsyncD and starts sending Data TRAU Frames in the uplink direction to trigger the TRAU to start sending Data TRAU Frames in the downlink direction to be used for downlink Synchronization Recovery.

If TsyncR expires before frame synchronization is again obtained, the CCU starts sending Data TRAU Frames in the uplink direction to be used for uplink Synchronization Recovery.

If TsyncD or TsyncU expires before frame synchronization is again obtained, the call shall be released as specified in GSM 08.58 with the case field set to " Remote Transcoder Failure".

TsyncD is reset every time frame synchronization is again obtained.

TsyncU and TsyncR is reset every time three consecutive TRAU frames are received without Uplink Frame Error indication, without errors on the frame synchronization pattern and on the control bits.

TsyncD and TsyncU are parameters set by O&M (default value = 1 second)

TsyncR are a parameter set by O&M (default value = 60 milliseconds).

4.9 Correction/detection of bit errors on the terrestrial circuits

4.9.1 Error Detection on the Control Bits

For the control bits, (C-bits), no error coding is made. Exception: In case of AMR the C-Bits are protected by CRC. However, in order to reduce the possibility of misinterpretation of control information due to bit errors, the following procedure should be followed.

4.9.1.1 General Procedure

If any undefined combination of the C-bits is received (see clause 3.5), the frame should be reacted upon as received with errors.

4.9.1.2 Frames for Speech Services

In addition to the general procedure described in the previous clause, the following procedure should be followed:

Bits C6 - C11: Time Alignment.

The full range of the time alignment adjustment should only be applied when the TRAU is in the Initial Time Alignment state (see clauses 4.6.1.1 and 4.6.1.2).

If, in the Static Time Alignment state, a time alignment order is received indicating an adjustment of more than 250 μ s, the next downlink frame should be delayed only one 250 μ s step.

If an uplink frame is received with the "Time Alignment" field set to an unused value, this value should be interpreted as "no change".

4.9.2 Handling of frames received with errors

If TRAU frame is received in the uplink or downlink with detectable errors in the control bits, then the control information shall be ignored. The speech or data bits may be handled as if no error had been detected.

If frame synchronisation has been lost (see clause 4.8.3) in the uplink direction the TRAU shall:

- for speech, mute the decoded speech as if it has received frames with errors (cf. GSM 06.11 and GSM 06.61 and GSM 06.91);
- for data, send idle frames as defined in GSM 08.20 to the MSC/interworking.

4.9.2.1 In case of Full Rate speech

If frame synchronisation has been lost in the downlink direction then the same procedure shall be followed as when frame synchronisation is lost on the PCM link.

4.9.2.2 In case of Enhanced Full Rate and Adaptive Multi-Rate speech

For speech calls, the CCU shall transmit a layer two fill frame on the air interface if frame synchronization has been lost in the downlink direction.

If a CRC error is detected in a downlink TRAU speech frame a solution can be to transmit a layer two fill frame on the air interface, another solution can be to replace the bad part of the TRAU speech frame only. The choice of the solution is left open.

If a CRC error is detected in a uplink TRAU speech frame, the TRAU speech frame shall be regarded as bad or partly bad and the TRAU shall apply the procedure defined in GSM 06.61, respectively GSM 06.91.

4.10 Procedures for Operation & Maintenance

The general procedures for Operation and Maintenance are described in GSM 12.21.

If the transcoders are positioned outside the BTS, some O&M functions will be required for the TRAU and the CCU. In particular this applies for transcoders positioned at the MSC site.

The transcoders outside the BTS are considered a part of the BSC, and the O&M functions for the TRAU should therefore be implemented in the BSC.

The CCU is a part of the BTS and the O&M functions for this unit should therefore be implemented in the BTS.

4.10.1 Transfer of O&M Information Between the TRAU and the BSC

The transfer of O&M information between the BSC and the TRAU is possible to do in two ways. Either it is handled directly between the BSC and the TRAU or a BTS is used as a message transfer point. The choice between the two methods is up to the manufacturer of the BSC:

- i) The transfer of O&M information between the BSC and the TRAU is handled internally by the BSC. The O&M signalling between the TRAU and the BSC may either be handled by proprietary BSC solutions or the O&M TRAU frames defined in clauses 3.2 and 3.5.2 could be used. In the latter case, the BSC has to act as a terminal for the O&M TRAU frames sent between the TRAU and the BSC.
- ii) The O&M information between the TRAU and the BSC is transferred using O&M TRAU frames between the TRAU and the CCU in a BTS. The BTS then acts as a relay function between the O&M TRAU frames and the associated O&M messages sent between the BTS and the BSC.

4.10.2 Procedures in the TRAU

In case of urgent fault conditions in the TRAU, e.g. loss of frame synchronization, non-ability of the transcoder to process data etc., this should if possible, be signalled to the BTS/BSC as an urgent alarm pattern. The urgent alarm pattern is a continuous stream of binary "0".

If O&M TRAU frames information between the TRAU and the BSC is transferred using O&M frames between the CCU in a BTS and the TRAU, the TRAU sends O&M frames periodically until the identical O&M TRAU frame is received for acknowledgement. The period is at least 64×20 ms (1,28 sec).

In case of minor fault conditions, when no immediate action is required, the TRAU may send O&M frames indicating the fault instead of the urgent alarm pattern.

4.10.3 Procedures in the BSC

The BSC should be able to detect a faulty TRAU, take it out of service and give an indication to O&M. A faulty TRAU could be detected e.g. by routine tests, alarms from the TRAU, release of call initiated by the BTS due to remote transcoder failure etc. How this is handled by the BSC is regarded as a BSC internal matter.

4.10.3.1 Use of O&M Frames

The use and coding of O&M TRAU frames is left to the implementor of the BSC/TRAU.

If O&M TRAU frames are used, they are always carrying 264 data bits.

Any corresponding O&M message between the BSC and the BTS shall always carry all 264 O&M data bits.

4.10.4 Procedures in the BTS

If a CCU in a BTS receives O&M TRAU frames from the TRAU, the BTS shall:

- send the identical frame to the TRAU for acknowledgement; and
- put the 264 data bits from the received frames into an appropriate O&M message and send it to the BSC.

If the CCU receives O&M frames during a call then "stolen frames" shall be indicated to the MS and layer 2 frames of format A (see GSM 04.06) shall be transmitted.

If the CCU receives O&M frames during a data call, then the same procedure shall be used as when V.110 frame is lost.

If receiving an O&M message from the BSC, carrying TRAU O&M information, the BTS puts the 264 data bits from the received message into an O&M TRAU frame and then the CCU allocated to the addressed connection sends the frame to the TRAU in one single O&M TRAU frame. Repetition is done according to GSM 12.21.

In case of a faulty CCU, the O&M procedures are BTS internal.

If the CCU receives the urgent alarm pattern, the BTS shall initiate release of the call as specified in GSM 08.58 with the cause field set to "Remote Transcoder Failure".

Annex A (informative): Change History

| Change history | | | | | |
|----------------|----------------------------|--------------------------|--|-------------|--|
| SMG No. | TDoc. No. | CR. No. | Clause affected | New version | Subject/Comments |
| SMG#07 | | | | 4.1.3 | ETSI Publication |
| SMG#13 | | 027 028 029 030 | 4.6.1.2, 4.6.1.4.2 | 4.2.0 | Remote management of the loss of synch by transcoder Improvement of the transcoder time alignment process Clarification of clauses 4.6.1.2 and 4.6.1.4.2 Initial Time Alignment |
| SMG#22 | 434/97 | A004 | | 4.3.0 | Provide an option to handle missing data in case of full rate in the same way as for enhanced full rate |
| SMG#23 | 97-770 | A007 | | 4.4.0 | Update of inband control of the remote TRAU to handle the frames of the new codec EFR (Phase 2) |
| SMG#19 | | | | 5.0.1 | Release 1996 version |
| SMG#22 | 434/97 434/97 459/97 | A005 A006 A007 | | 5.1.0 | Provide an option to handle missing data in case of full rate in the same way as for enhanced full rate Introduction of 14.5 kbit/s channel coding WI 14.4 kbit/s user data |
| SMG#22 | | | | 5.1.1 | ETSI version change |
| SMG#27 | | | | 6.0.0 | Release 1997 version |
| SMG#29 | | | | 7.0.0 | Release 1998 version |
| SMG#30 | 580/99 | A010 | | 7.1.0 | Introduction of AMR |
| SMG#30 | 616/99 | A009 | | 8.0.1 | Asymmetrical Channel Codings for ECSD |
| SMG#30bis | 806 | A012 | 3.5.1.2.1, 3.5.1.2.2 and 4.6.2.2 | 8.1.0 | Support of AMR-TFO |
| | | | | 8.1.1 | Editorial |

N.B Draft version 8.0.0 exists without CR 0860-A010.

| Change history | | | | | | | |
|----------------|-------------|-----------|------|-----|-------------------|-------|-------|
| Date | TSG GE RAN# | TSG Doc. | CR | Rev | Subject/Comment | Old | New |
| 2002-02 | 08 | GP-020181 | A014 | | Handover_Complete | 8.1.1 | 8.2.0 |
| | | | | | | | |
| | | | | | | | |

History

| Document history | | |
|-------------------------|---------------|-------------|
| V8.1.1 | October 2001 | Publication |
| V8.2.0 | February 2002 | Publication |
| | | |
| | | |
| | | |