



**Digital cellular telecommunications system (Phase 2+) (GSM);  
Universal Mobile Telecommunications System (UMTS);  
LTE;  
Multimedia Broadcast/Multicast Service (MBMS)  
user service guidelines  
(3GPP TR 26.946 version 14.0.0 Release 14)**



---

**Reference**RTR/TSGS-0426946ve00

---

**Keywords**GSM,LTE,UMTS

---

**ETSI**

650 Route des Lucioles  
F-06921 Sophia Antipolis Cedex - FRANCE

---

Tel.: +33 4 92 94 42 00 Fax: +33 4 93 65 47 16

Siret N° 348 623 562 00017 - NAF 742 C  
Association à but non lucratif enregistrée à la  
Sous-Préfecture de Grasse (06) N° 7803/88

---

**Important notice**

---

The present document can be downloaded from:

<http://www.etsi.org/standards-search>

The present document may be made available in electronic versions and/or in print. The content of any electronic and/or print versions of the present document shall not be modified without the prior written authorization of ETSI. In case of any existing or perceived difference in contents between such versions and/or in print, the only prevailing document is the print of the Portable Document Format (PDF) version kept on a specific network drive within ETSI Secretariat.

Users of the present document should be aware that the document may be subject to revision or change of status.

Information on the current status of this and other ETSI documents is available at

<https://portal.etsi.org/TB/ETSIDeliverableStatus.aspx>

If you find errors in the present document, please send your comment to one of the following services:

<https://portal.etsi.org/People/CommiteeSupportStaff.aspx>

---

**Copyright Notification**

---

No part may be reproduced or utilized in any form or by any means, electronic or mechanical, including photocopying and microfilm except as authorized by written permission of ETSI.

The content of the PDF version shall not be modified without the written authorization of ETSI.

The copyright and the foregoing restriction extend to reproduction in all media.

© European Telecommunications Standards Institute 2017.

All rights reserved.

**DECT™**, **PLUGTESTS™**, **UMTS™** and the ETSI logo are Trade Marks of ETSI registered for the benefit of its Members.  
**3GPP™** and **LTE™** are Trade Marks of ETSI registered for the benefit of its Members and of the 3GPP Organizational Partners.  
**GSM®** and the GSM logo are Trade Marks registered and owned by the GSM Association.

---

## Intellectual Property Rights

IPRs essential or potentially essential to the present document may have been declared to ETSI. The information pertaining to these essential IPRs, if any, is publicly available for **ETSI members and non-members**, and can be found in ETSI SR 000 314: "*Intellectual Property Rights (IPRs); Essential, or potentially Essential, IPRs notified to ETSI in respect of ETSI standards*", which is available from the ETSI Secretariat. Latest updates are available on the ETSI Web server (<https://ipr.etsi.org>).

Pursuant to the ETSI IPR Policy, no investigation, including IPR searches, has been carried out by ETSI. No guarantee can be given as to the existence of other IPRs not referenced in ETSI SR 000 314 (or the updates on the ETSI Web server) which are, or may be, or may become, essential to the present document.

---

## Foreword

This Technical Report (TR) has been produced by ETSI 3rd Generation Partnership Project (3GPP).

The present document may refer to technical specifications or reports using their 3GPP identities, UMTS identities or GSM identities. These should be interpreted as being references to the corresponding ETSI deliverables.

The cross reference between GSM, UMTS, 3GPP and ETSI identities can be found under <http://webapp.etsi.org/key/queryform.asp>.

---

## Modal verbs terminology

In the present document "**should**", "**should not**", "**may**", "**need not**", "**will**", "**will not**", "**can**" and "**cannot**" are to be interpreted as described in clause 3.2 of the [ETSI Drafting Rules](#) (Verbal forms for the expression of provisions).

"**must**" and "**must not**" are **NOT** allowed in ETSI deliverables except when used in direct citation.

# Contents

Intellectual Property Rights .....	2
Foreword.....	2
Modal verbs terminology.....	2
Foreword.....	5
Introduction .....	5
1 Scope .....	6
2 References .....	6
3 Definitions and abbreviations.....	7
3.1 Definitions .....	7
3.2 Abbreviations .....	8
4 Overview .....	9
4.1 Phasing model .....	9
4.2 System overview .....	9
5 Description of User Service procedures.....	11
5.1 User Service Discovery / Announcement.....	11
5.2 User Service Initiation / termination procedure.....	11
5.3 Session Start / Stop.....	12
5.4 Data transmission .....	12
5.5 Associated-Delivery procedures.....	12
5.5.1 File Repair service .....	12
5.5.2 Content reception reporting .....	12
6 Delivery methods .....	12
6.1 Download delivery method .....	12
6.1.1 SDL diagram of the download delivery method for the MBMS UE .....	14
6.1.2 Transport of MBMS download data .....	16
6.1.3 Repair Symbol Request .....	18
6.1.3.1 Option 1: Determination of a minimum set of source symbols for repair.....	18
6.1.3.2 Option 2: Determination of a sufficient set of consecutive encoding symbols for repair .....	19
6.1.3.3 Maximum Gaussian elimination .....	20
6.1.4 On choosing the SDU size .....	20
6.1.4.1 Analysis.....	21
6.2 Streaming delivery method.....	21
7 Usage scenarios .....	22
7.1 Service Discovery/Announcement .....	22
7.2 MBMS download delivery method .....	23
7.2.1 Example: Video clip download service use-case.....	23
7.2.1.1 Use-case description.....	23
7.2.1.2 Announced Metadata Fragments.....	24
7.2.1.3 Reception of a video clip.....	25
7.2.1.4 File Repair procedure .....	26
7.2.2 The usage of the MBMS session Identity in file download delivery .....	28
7.2.2.1 Introduction.....	28
7.2.2.2 Example 1: Usage of the Session ID to detect repetition .....	29
7.2.2.3 Example 2: Declaration of files of a different MBMS bearer session in the FDT .....	30
7.2.2.4 Example 3: Declaration of files of an MBMS bearer session in several FDT Instances.....	31
7.2.3 Partial File Delivery from MBMS Receiver to DASH Client .....	31
7.2.4 Communication between MBMS Client and DASH Client.....	31
7.2.4.1 Introduction.....	31
7.2.4.2 SAND Message for MBMS Operations.....	31
7.2.4.2.1 Common Message .....	31
7.2.4.2.2 Resource Status .....	33

7.2.4.2.3	Bitrate Characteristics .....	33
7.2.4.2.4	Availability Time Offset.....	34
7.2.4.3	Message Channel .....	35
7.2.4.3.1	General .....	35
7.2.4.3.2	Assistance .....	35
7.2.4.3.3	Enforcement .....	35
7.2.4.3.4	Error Case.....	35
7.2.5	Proxy-Based Interaction Between MBMS Receiver and DASH Client .....	36
7.2.5.1	Introduction .....	36
7.2.5.2	Usage Guidelines Example .....	37
7.2.5.2.1	Assumptions .....	37
7.2.5.2.2	Same Resource .....	38
7.2.5.2.3	Alternative Content .....	38
7.2.5.2.4	Outside MBMS coverage .....	38
7.2.5.2.5	Persistence of the 300 Redirection .....	39
7.3	MBMS streaming delivery method .....	39
8	Codecs and formats .....	39
<b>Annex A:</b>	<b>MBMS Forward Error Correction performance.....</b>	<b>41</b>
A.1	Theoretical performance.....	41
A.2	Simulation results .....	41
A.2.1	Simulation conditions and assumptions (UTRAN) .....	42
A.2.2	Simulation conditions and assumptions (GERAN) .....	43
A.2.3	Simulation results: UTRAN download.....	44
A.2.4	Simulation results UTRAN streaming .....	45
A.2.5	Simulation results GERAN download .....	45
A.2.6	Simulation results GERAN streaming .....	46
<b>Annex B:</b>	<b>Change history .....</b>	<b>47</b>
History .....		48

---

## Foreword

This Technical Report has been produced by the 3<sup>rd</sup> Generation Partnership Project (3GPP).

The contents of the present document are subject to continuing work within the TSG and may change following formal TSG approval. Should the TSG modify the contents of the present document, it will be re-released by the TSG with an identifying change of release date and an increase in version number as follows:

Version x.y.z

where:

- x the first digit:
  - 1 presented to TSG for information;
  - 2 presented to TSG for approval;
  - 3 or greater indicates TSG approved document under change control.
- y the second digit is incremented for all changes of substance, i.e. technical enhancements, corrections, updates, etc.
- z the third digit is incremented when editorial only changes have been incorporated in the document.

---

## Introduction

MBMS user services can be built on top of the MBMS bearer service. The present document describes the usage of the two delivery methods, which are defined in [6]. The two delivery methods are streaming and download. Examples of applications using the download delivery method are news and software upgrades. Delivery of live music is an example of an application using the streaming delivery method.

The objective of the present document is to provide an overview of the MBMS System, and describes how the MBMS User Services use the MBMS Bearer Services.

---

# 1 Scope

The present document is only informative. In case there are any contradiction between the present document and 26.346, then the 3GPP TS 26.346 takes precedence.

---

# 2 References

The following documents contain provisions which, through reference in this text, constitute provisions of the present document.

- References are either specific (identified by date of publication, edition number, version number, etc.) or non-specific.
- For a specific reference, subsequent revisions do not apply.
- For a non-specific reference, the latest version applies. In the case of a reference to a 3GPP document (including a GSM document), a non-specific reference implicitly refers to the latest version of that document *in the same Release as the present document*.

- [1] 3GPP TR 21.905: "Vocabulary for 3GPP Specifications".
- [2] 3GPP TS 22.146: "Multimedia Broadcast/Multicast Service (MBMS); Stage 1".
- [3] 3GPP TS 22.246: "Multimedia Broadcast/Multicast Service (MBMS) user services; Stage 1".
- [4] 3GPP TS 23.246: "Multimedia Broadcast/Multicast Service (MBMS); Architecture and functional description".
- [5] 3GPP TS 25.346: "Introduction of the Multimedia Broadcast/Multicast Service (MBMS) in the Radio Access Network (RAN); Stage 2".
- [6] 3GPP TS 26.346: "Multimedia Broadcast/Multicast Service (MBMS); Protocols and codecs".
- [7] 3GPP TS 33.220: "Generic Authentication Architecture (GAA); Generic bootstrapping architecture".
- [8] 3GPP TS 33.246: "3G Security; Security of Multimedia Broadcast/Multicast Service (MBMS)".
- [9] IETF RFC 3926 (October 2004): "FLUTE - File Delivery over Unidirectional Transport", T. Paila, M. Luby, R. Lehtonen, V. Roca and R. Walsh.
- [10] IETF RFC 3450 (December 2002): "Asynchronous Layered Coding (ALC) Protocol Instantiation", M. Luby, J. Gemmell, L. Vicisano, L. Rizzo and J. Crowcroft.
- [11] IETF RFC 3451 (December 2002): "Layered Coding Transport (LCT) Building Block", M. Luby, J. Gemmell, L. Vicisano, L. Rizzo, M. Handley and J. Crowcroft.
- [12] IETF RFC 3452 (December 2002): "Forward Error Correction (FEC) Building Block", M. Luby, L. Vicisano, J. Gemmell, L. Rizzo, M. Handley and J. Crowcroft.
- [13] IETF RFC 3695 (February 2004): "Compact Forward Error Correction (FEC) Schemes", M. Luby and L. Vicisano.
- [14] IETF RFC 2327 (April 1998): "SDP: Session Description Protocol", M. Handley and V. Jacobson.
- [15] IETF RFC 2357 (June 1998): "IETF Criteria for Evaluating Reliable Multicast Transport and Application Protocols", A. Mankin, A. Romanow, S. Bradner and V. Paxson.
- [16] IETF RFC 3550 (July 2003): "RTP: A Transport Protocol for Real-Time Applications", H. Schulzrinne, S. Casner, P. Frederick and V. Jacobson.

- [17] ITU-T Recommendation H.264 (2003): "Advanced video coding for generic audiovisual services" | ISO/IEC 14496-10:2003: "Information technology - Coding of audio-visual objects - Part 10: Advanced Video Coding".
- [18] IETF RFC 3984 (February 2005): "RTP payload Format for H.264 Video", S. Wenger, M.M. Hannuksela, T. Stockhammer, M. Westerlund and D. Singer.
- [19] IETF RFC 2616 (June 1999): "Hypertext Transfer Protocol -- HTTP/1.1".
- [20] 3GPP TS 26.244: "Transparent end-to-end streaming service; 3GPP file format (3GP)".
- [21] 3GPP TS 26.247: "Transparent end-to-end Packet-switched Streaming Service (PSS); Progressive Download and Dynamic Adaptive Streaming over HTTP (3GP-DASH)".
- [22] IETF RFC 7231 (June 2014): "Hypertext Transfer Protocol (HTTP/1.1): Semantics and Content", R. Fielding, J. Reschke.
- [23] 3GPP TR 26.848: "Multimedia Broadcast/Multicast Service (MBMS); Enhanced MBMS Operation".
- [24] IETF RFC 3986: "Uniform Resource Identifier (URI): Generic Syntax", D. Berners-Lee, R. Fielding, L. Masinter.

---

## 3 Definitions and abbreviations

### 3.1 Definitions

For the purposes of the present document, the terms and definitions given in 3GPP TR 21.905 [1] and the following apply.

**broadcast service:** See 3GPP TS 22.146 [2].

**broadcast session:** See 3GPP TS 22.146 [2].

**Local MBMS Area:** area of a MBMS service, where the service content is the same. One MBMS service may have different content in different local broadcast areas

**Multimedia Broadcast/Multicast Service (MBMS):** See 3GPP TS 22.146 [2].

**MBMS user services:** See 3GPP TS 22.246 [3].

**MBMS user service discovery/announcement:** user service discovery refers to methods for the UE to obtain the list of available MBMS user services along with information on the user service

The user service announcement refers to methods for the MBMS service provider to make the list of available MBMS user services along with information on the user service available to the UE.

**MBMS user service initiation:** MBMS user service initiation refers to the UE mechanism to set up the reception the MBMS user service data

**MBMS delivery method:** mechanism used by a MBMS user service to deliver content  
There are two MBMS delivery method instances: download and streaming.

**MBMS download delivery method:** delivery of discrete objects (e.g. files) by means of a MBMS download session

**MBMS streaming delivery method:** delivery of continuous media (e.g. real-time video) by means of a MBMS streaming session

**MBMS download session:** time, protocols and protocol state (i.e. parameters) which define sender and receiver configuration for the download of content files

**MBMS streaming session:** time, protocols and protocol state (i.e. parameters) which define sender and receiver configuration for the streaming of content



**multicast joining:** See 3GPP TS 22.146 [2].

**multicast service:** See 3GPP TS 22.146 [2].

**multicast session:** See 3GPP TS 22.146 [2].

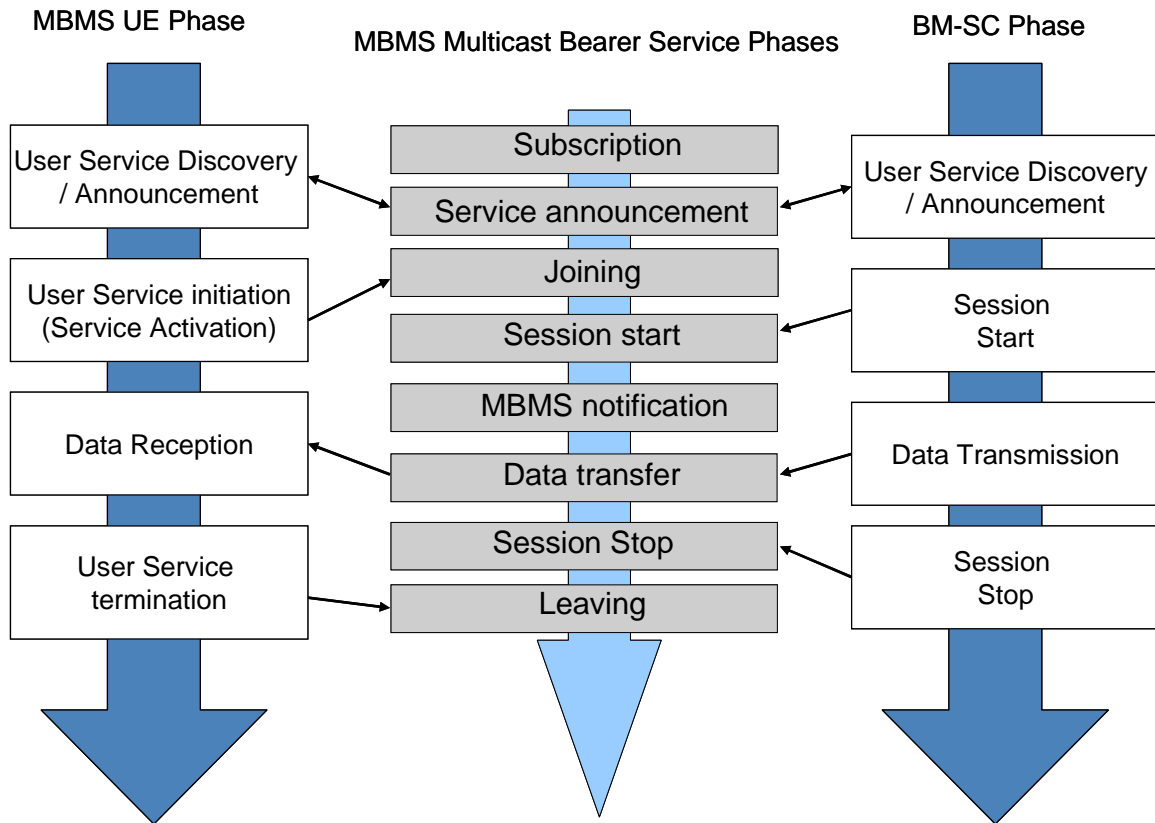
## 3.2 Abbreviations

For the purposes of the present document, the abbreviations given in 3GPP TR 21.905 [1] and the following abbreviations apply:

ADPD	Associated Delivery Procedure Description
ALC	Asynchronous Layered Coding
AVC	Advanced Video Coding
BM-SC	Broadcast-Multicast - Service Centre
CC	Congestion Control
DANE	DASH Aware Network Element
DASH	Dynamic Adaptive Streaming over HTTP
ERT	Expected Residual Time
ESI	Encoding Symbol ID
FDT	File Delivery Table
FLUTE	File deLivery over Unidirectional Transport
GBA	Generic Bootstrapping Architecture
IDR	Instantaneous Decoder Refresh
LCT	Layered Coding Transport
MIME	Multipurpose Internet Mail Extensions
MMS	Multimedia Messaging Service
MSK	MBMS Service Key
MTK	MBMS Traffic Key
MUK	MBMS User Key
NAL	Network Abstraction Layer
NTP	Network Time Protocol
PSS	Packet Switch Streaming
SAMMO	SAND Message for MBMS Operations
SAND	Server and Network Assisted DASH
SBN	Source Block Number
SCT	Sender Current Time
SEI	Supplemental Enhancement Information
TMGI	Temporary Mobile Group Identity
TOI	Transport Object Identifier
TSI	Transport Session Identifier

## 4 Overview

### 4.1 Phasing model



**Figure 1: Mapping between MBMS Bearer and User Service phases**

This mapping is applicable for the MBMS Broadcast and Multicast Modes.

It is assumed that the MBMS bearer service phases "Session start" and "MBMS notification" are handled autonomously and without interaction from the receiver application perspective.

It is assumed, that the Session Start phase "triggers" MBMS Notification phase.

### 4.2 System overview

Figure 2 gives an overview of functions for MBMS user services based on the MBMS download and the MBMS streaming delivery methods. The figure includes the MBMS User service provision phases (arrow on the right side of the figure). The Phase "MBMS User Service activation / deactivation" is an individual phase and is generally triggered by a user action. The break in the sequence indicates that the service activation phases are independent from the session

start/stop and the data transfer phases. The service provider initiates the establishment of the MBMS User Plane (Session Start/Stop and the Data Transfer Phases) when there is content to be transmitted.

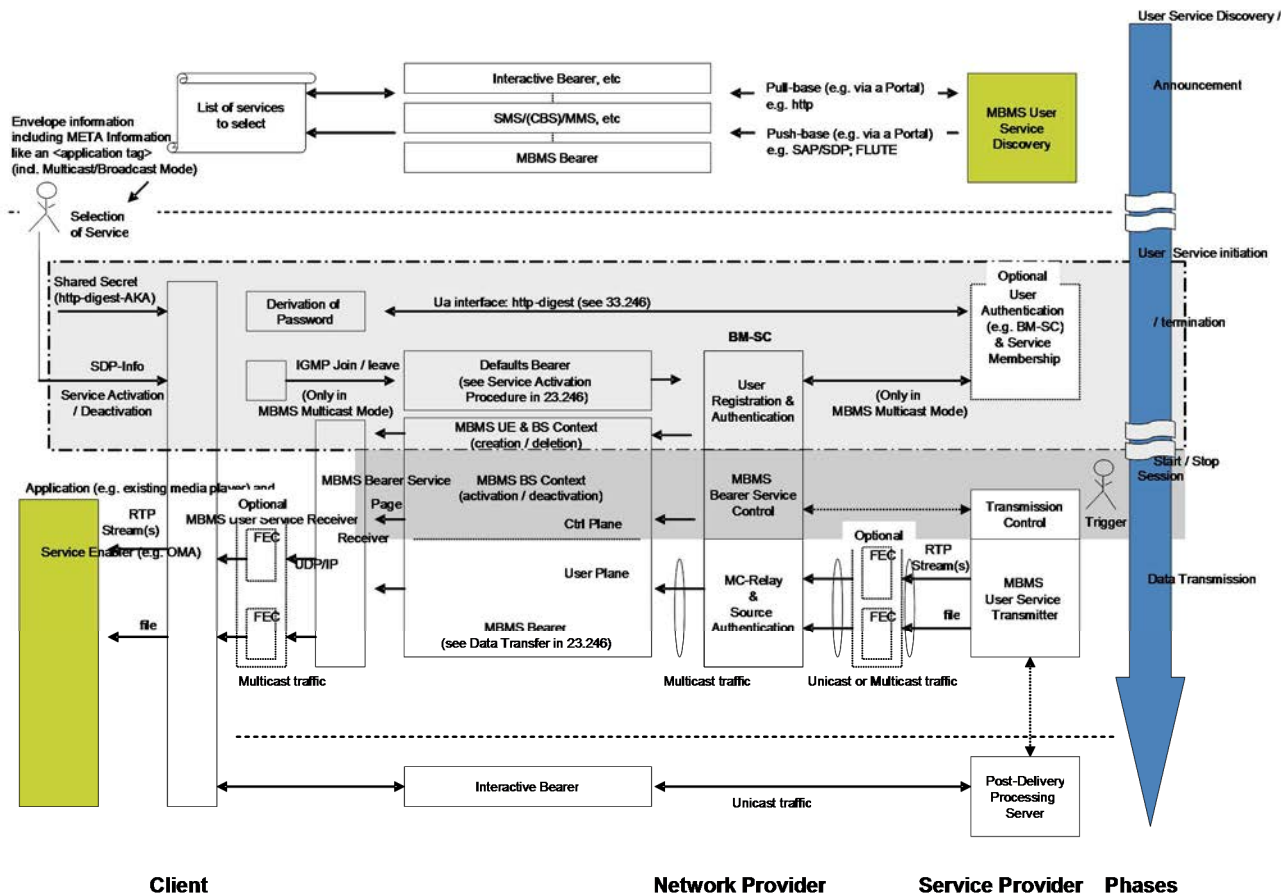


Figure 2: MBMS system overview

The MBMS Bearer Services are embedded in MBMS User Service procedures. The major part of the data is transferred via the MBMS Bearer Service. MBMS User Services include Associated-Delivery procedures (e.g. file repair) to augment the original MBMS Bearer sessions. Security functions are incorporated into the overview figure. One dedicated user authentication procedure is depicted in conjunction with the MBMS Bearer Service Activation procedure within the Session Establishment phase.

The figure contains client and network functions. Interactions, which are only applicable for the MBMS Multicast Mode, are marked accordingly.

---

## 5 Description of User Service procedures

### 5.1 User Service Discovery / Announcement

The "User Service Discovery / Announcement" phase provides all necessary information about available services and needed parameters to become member of a service. User Service Discovery / Announcement mechanism can provide information on available MBMS User services in pull mode, via the Web or WAP Portals, or in push mode, via SMS or MBMS Download based User Service.

The User Service Discovery / Announcement phase provides all necessary information for the "Service Activation" triggered by the UE. The necessary session parameters to configure the service activation are provided according to Session Description Protocol (SDP) specification (RFC 2327 [14]), which are complemented by additional information containing additional service parameters. Additionally, Service Discovery includes DRM/security descriptions.

In the case of a size-limited delivery method (e.g. SMS, MMS) being used during the Service Announcement / Discovery phase, it should be recognized that Service Announcement messages are not of fixed length. Methods of limiting the size of the message may be adopted. It is suggested that should a size-limited delivery method be selected, parameters such as URI lengths and the number of Connection data and Media announcement fields should be chosen appropriately.

### 5.2 User Service Initiation / termination procedure

For MBMS User service activation, the UE needs to perform a security function and the MBMS Bearer Service activation procedures. In the case of MBMS Multicast Mode, an IGMP or MLD message is sent via a "default" PDP context and triggers the creation of the MBMS UE context in various nodes. A MBMS Bearer Service (BS) context is only created once when the very first MBMS UE context is created in a node. In the case of MBMS Broadcast Mode, network-side elements establish the MBMS BS context without requiring user initiated messaging. The basic idea behind these procedures is that several UEs share one single bearer. The IP Multicast address and information for the MBMS User Service receiving application is given via the MBMS Service Discovery mechanism.

In case the service requires user authentication, security procedures are performed before the MBMS bearer Service Activation procedure. The "user authentication" procedure is a service optional security procedure. A password is derived from the shared secret (result of a GBA run) and used in the http-digest security procedure to authenticate the user (see 3GPP TS 33.220 [7] and 3GPP TS 33.346 [8] for further details).

The "User Authentication & Service Membership" phase provides procedures to register and authenticate users. The procedures shall follow the security specifications. In the case of MBMS Multicast Mode, this phase may authorize the service activation request from the UE. This function is present when security procedures like authentication and traffic encryption are required.

## 5.3 Session Start / Stop

According to the 3GPP TS 23.246 [4], the BM-SC controls the activation and the release of the MBMS User plane (switching of the MBMS BS context between "Active" and "Idle"). The Service Provider might trigger this process on the availability of new content. The release of the user plane resources depends on the transmission duration of the content. The transmission duration depends in case of the MBMS Download User Service on the content size, on the (optional) Forward-Error-Correction (FEC) overhead for error protection and the bitrate of the MBMS bearer.

## 5.4 Data transmission

The "MBMS User Service Transmitter" contains the MBMS User Service specific transmission protocols. Optionally, the content is protected by a Forward Error Correction (FEC) code. The traffic is sent using either IP unicast addressing or IP Multicast addressing via the BM-SC onto the MBMS Bearer Service. Note, the BM-SC is able to take IP Unicast and IP Multicast traffic as input according to 3GPP TS 23.246 [4].

In case of IP Unicast, the BM-SC is directly addressed by the MBMS User Service Transmitter and relays the traffic to IP Multicast. In case of IP Multicast, the traffic is forwarded by the BM-SC and the MBMS User Service Transmitter forwards the data to an IP Multicast group. Additionally the MC-Relay in the BM-SC may perform additional source authentication procedures to avoid unauthorized traffic entering the Core Network.

The "MBMS User Service Receiver" combines the reception via the MBMS Bearer Service and interactive bearer services in a controlled way. Optional "Associated-Delivery Processing Servers" are invoked after the actual MBMS data reception from the clients. A typical associated-delivery procedure is a point-to-point file repair mechanism for delivering missing data to clients of an MBMS Download session, which perceived packet losses that are unrecoverable during the broadcast/multicast transmission. The load of the point-to-point repair mechanism may be spread randomly in time and also across network elements. The MBMS Bearer Service may be configured to provide a constant or variable bit rate as requested by the MBMS User Service. The MBMS Bearer Service is expected to be service independent and can be configured by a Network Provider for MBMS Download and MBMS Streaming User Services.

## 5.5 Associated-Delivery procedures

Associated-delivery procedures may also include the usage of MBMS bearers.

### 5.5.1 File Repair service

It should be possible for UEs to repair erroneous files, delivery by the download delivery method, by means of repair request and response operations.

### 5.5.2 Content reception reporting

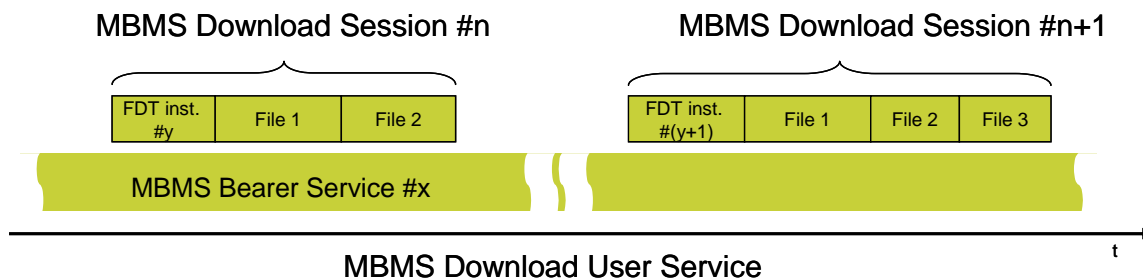
It should be however possible for the operator to collect statistical data such as lost frames, assigned resources, bit-rates achieved, etc. (3GPP TS 22.246 [3]).

---

## 6 Delivery methods

### 6.1 Download delivery method

The MBMS Download Delivery Method allows the error-free transmission of files via the unidirectional MBMS Bearer Services. The files are "downloaded" and stored in the local files-system of the user equipment. The network triggers the transmission since the users are registered to the download service. There is no further user request necessary after the service registration. Files may contain multimedia components or any other binary data. The MBMS Download Delivery Method allows the transmission of an arbitrary number of files within a single data transfer phase.



**Figure 3: Definition of MBMS Download Sessions**

Figure 4 is an example of an MBMS User Service based on the Download Delivery Method. The file transmission events are organized in MBMS Download Sessions. Each session is started with a File Delivery Table (FDT) instance, which describes in this example each file within the MBMS Download Session in terms of file name and file type (MIME Content Type). The service operator and the actual service would determine the timing of MBMS Download Sessions.

Users of the download-based MBMS User Service are not required to recognize the MBMS Downloading process itself, the reception may be happening completely in background. The user may be only informed about the completion of a MBMS download and that there is new content available on the terminal. Depending on the service, the MBMS Download session may require time-critical delivery of content.

### 6.1.1 SDL diagram of the download delivery method for the MBMS UE

Figure 4 and figure 5 describes the operation of an MBMS download receiver. The MBMS UE performs the steps described in the SDL diagram for each received Transport Object. An MBMS FDT may include a number of transmission objects, each identified by a unique Transmission Object Identifier (TOI).

The SDL identifies four states of the MBMS UE. A brief description of these states follows:

- The "**standby**" state reflects the state of the MBMS UE, in which MBMS download receiver is initialized and bound to one specific download channel (IP Multicast Address/Port plus Source Address). Note, the MBMS bearer is not in active state.
- The "**Object Reception**" state reflects the state of the MBMS UE, in which the MBMS UE is receiving data for transport objects. The Transport Object Identifier (TOI) identifies one transport object. The UE may receive FDT Instance updates related to the object being downloaded, in which case it should update the corresponding information for that object.
- The "**defer file repair**" state reflects the state of the MBMS UE, in which the MBMS UE deferring the file repair request message. Deferring the file repair request message is described in clause 9.3.4 of 3GPP TS26.346 [6].
- The "**defer reception reporting**" state reflects the state of the MBMS UE, in which the MBMS UE deferring the file repair request message. Deferring the file repair request message is described in clause 9.4.4 of 3GPP TS 26.346 [6].

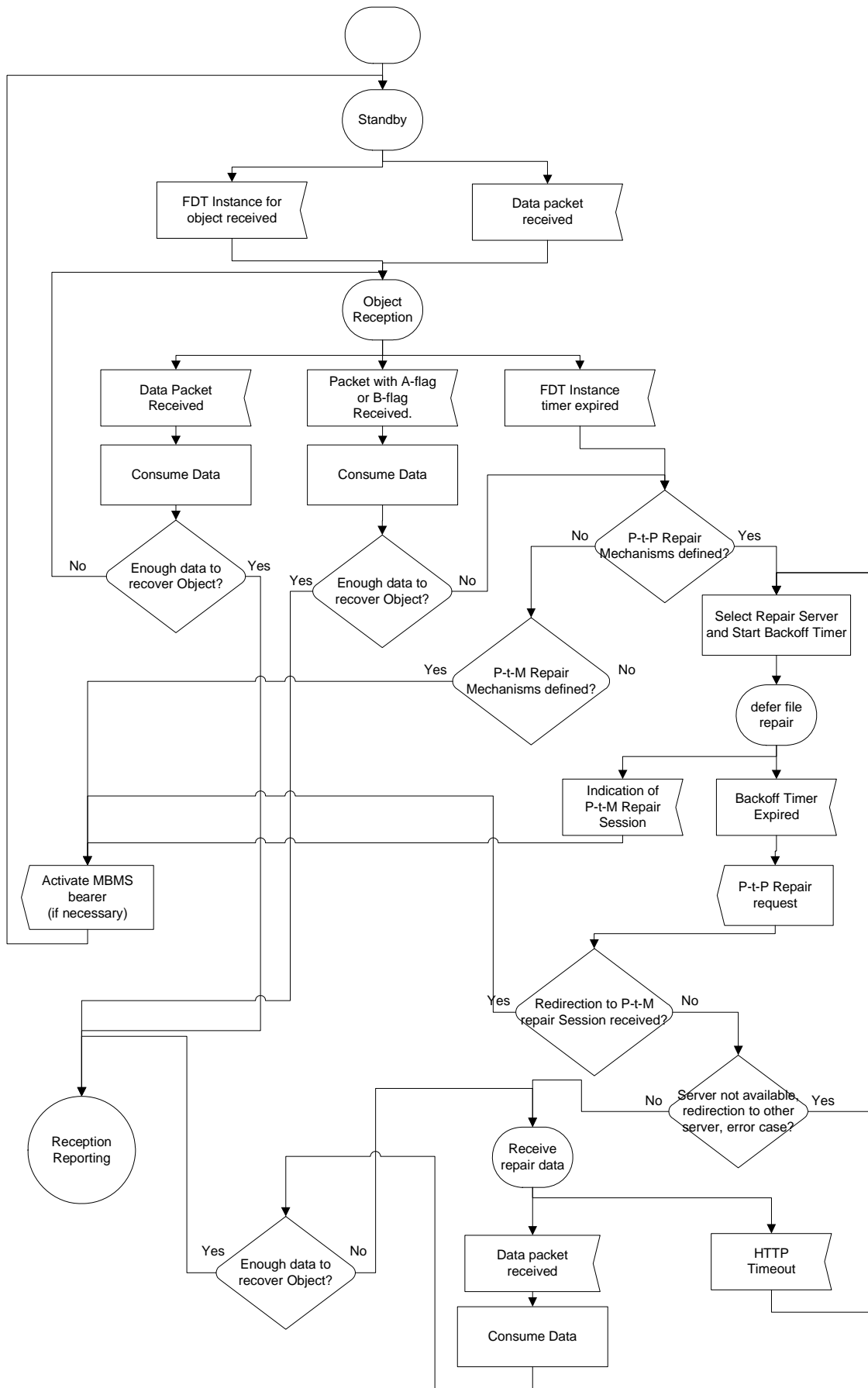
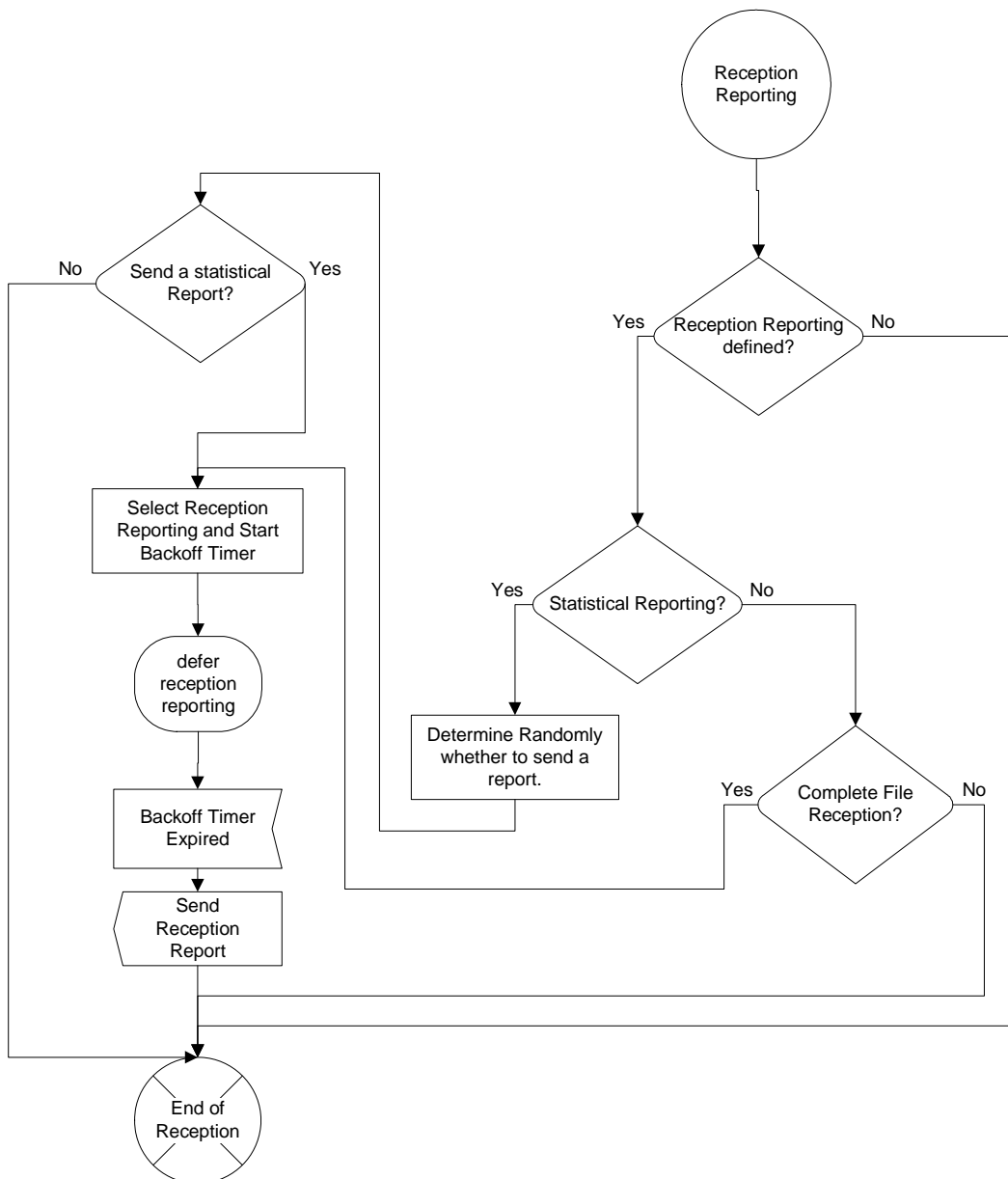


Figure 4: SDL diagram for the file download process of the MBMS UE





NOTE: Statistical Reports for download are only sent, if either a "Close session flag" (see clause 7.2.6) is received or a the "time to" value of the session description (from "t=" in SDP) is reached or a UE decides to exit the session.

Figure 5: SDL diagram for the reception reporting of the file download process of the MBMS UE

### 6.1.2 Transport of MBMS download data

This clause explains briefly how files are constructed for and transported during a FLUTE session.

The BM-SC takes a file, e.g. a video clip or a still image, which is used as the transport object for FLUTE (see figure 6). The BM-SC constructs source block by breaking the file into contiguous portions of approximately equal size. Each source block is broken into source symbols. One or more encoding symbols are carried as the payload of a FLUTE packet, thus the encoding symbol size must divide the FLUTE packet size. The target FLUTE packet size is configured by the BM-SC and, together with the file size, is used to determine the encoding symbol length. Note that when FEC is used with smaller files it is often necessary to include several symbols in each FLUTE packet. This means that the FLUTE packets cannot be fixed at a specific arbitrary size by the operator, because they must be a multiple of the number of symbols required per packet in size. Based on the transport object length, the encoding symbol length and the maximum source block length, FLUTE calculates the source block structure (i.e., the number of source blocks and their length).

## Constructing FLUTE Packets

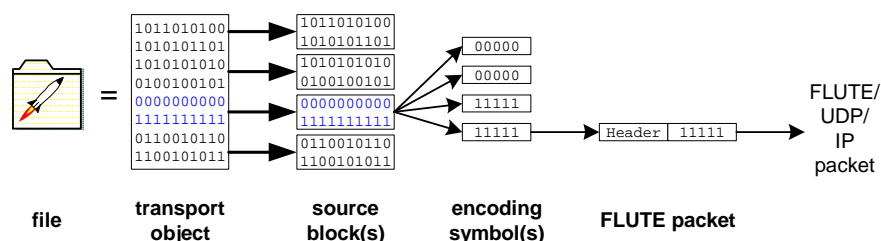


Figure 6: Constructing FLUTE packets

The BM-SC communicates the transport object length, the encoding symbol length and the file size to the receivers within the FLUTE session transmission. Thus the receiver can also calculate the source block structure in advance of receiving a file.

The FLUTE packet is constructed from FLUTE header and payload containing one or more encoding symbols.

The distinction between file and transport object is that the file is the object provided to the BM-SC and played-out or stored at the MBMS UE. Within the scope of FLUTE sessions, content encoding may be used, for instance to compress the file with gzip for delivery. In the presence of FLUTE session content encoding, the file and the transport object will be different binary objects, and in the absence of content encoding the transport object will be identical to the file. Any symbol calculations (including FEC) are performed on transport objects.

EXAMPLE 1:	File size:	1 MB (1 048 576 bytes)
	Target packet size (payload):	500 bytes
	Maximum source symbols:	8 192 (defined by FEC code)
	Minimum source block target:	1 024 (recommended by FEC code)
	Symbol alignment parameter:	4 bytes

Based on the recommendations of 3GPP TS 26.346 [6], clause B.3.4.1, then the above parameters would lead to 1 symbol of 500 bytes per packet and the file would be treated as a single source block with 2 098 symbols.

EXAMPLE 2:	File size:	16 MB (16 777 216 bytes)
	Target packet size (payload):	250 bytes
	Maximum source symbols:	8 192 (defined by FEC code)
	Minimum source block target:	1 024 (recommended by FEC code)
	Symbol alignment parameter:	4 bytes

This would result in 1 symbol of 248 bytes per packet and the file being broken into 9 source blocks, 2 source blocks will have size 7616 symbols and the remaining 7 will have size 7 517 symbols.

EXAMPLE 3:	File size:	256 KB (262 144 bytes)
	Target packet size (payload):	500 bytes
	Maximum source symbols:	8 192 (defined by FEC code)
	Minimum source block target:	1 024 (recommended by FEC code)
	Symbol alignment parameter:	4 bytes

This would result in 2 symbols of 248 bytes each per packet and the file being treated as a single source block of 1 058 symbols.

### 6.1.3 Repair Symbol Request

In 3GPP TS 26.346 [6], clause 9.3.3, on "Identification of Missing Data from an MBMS Download", it is stated that an MBMS UE is able to identify the ESI values of required source and/or repair symbols that would complete the reconstruction of a source block (of a file) and that the corresponding symbols can be requested from the server. Especially for the case when MBMS FEC scheme is used, the MBMS client should either:

1. identify a minimal set of source symbols that, combined with the already received symbols, allow the MBMS FEC decoder to recover the file; or
2. identify a number,  $r$ , of symbols such that reception of  $r$  previously non-received symbols will allow the MBMS FEC decoder to recover the file.

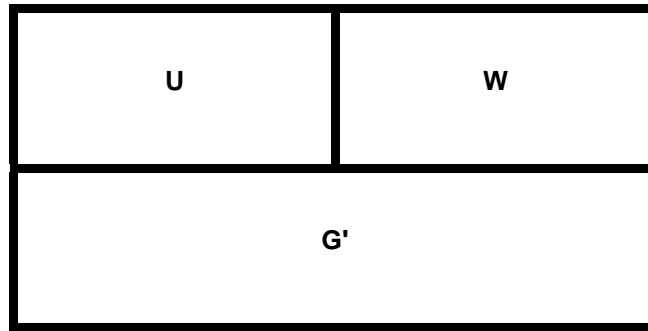
Option 1 (clause 6.1.3.1) is more appropriate if only very few symbols are lost as the signalling of only very few symbols is more efficient. In contrast, option 2 (clause 6.1.3.3) is appropriate in the case where a significant amount of symbols are not available. To minimize the uplink traffic, sending only the initial symbol ESI and the amount of requested consecutive symbols is more appropriate. The decision which option to use is up to the MBMS client.

For both options, example algorithms to determine a suitable set of repair symbols are presented in the following. For option 1 the derivation of a minimum set of source symbols and for option 2 the derivation of a sufficient set of consecutive repair symbols is described based on the initial matrix  $\mathbf{A}$  as constructed in 3GPP TS 26.346 [6], clause C.2.1. In both cases, a maximum Gaussian elimination as described below is performed on  $\mathbf{A}$ . Then, the matrix is virtually extended by those rows which, for option 1, represent the missing source symbols and, for option 2, a set of consecutive repair symbols. Maximum Gaussian elimination is again performed on this new matrix. With appropriate tracking of row and column labels this process allows finding an appropriate set of ESIs for repair of the source block as requested in 3GPP TS 26.346 [6], clause 9.3.3. Note that almost all parts of described algorithms can be included in the regular FEC decoding process as specified in annex C such that the decoding complexity is minimized. Nevertheless, the description of the following algorithms is based on the unmodified matrix  $\mathbf{A}$ .

#### 6.1.3.1 Option 1: Determination of a minimum set of source symbols for repair

The following algorithm operating on matrix  $\mathbf{A}$ , is used to determine a minimum set of source symbols for successful recovery:

1. Assume  $\mathbf{c}$  to be the column index vector of length  $L$  with labels such that column exchanges can be tracked, e.g. for all  $i=0, \dots, L-1$   $c[i]=i$ .
2. Apply the maximum Gaussian elimination process, as described below, to  $\mathbf{A}$ , with tracking of column labels  $\mathbf{c}$ . The process returns matrices  $\mathbf{U}$  and  $\mathbf{W}$  as well as the modified column label vector  $\mathbf{c}'$  of dimension  $L$ .
3. Generate an  $m$  by  $L$  matrix  $\mathbf{G}'$ , whereby  $m$  is equal to the number of non-received source symbols as follows. Consider  $\mathbf{G}_{\mathbf{LT}}$  to be the  $K$  by  $L$  generator matrix that corresponds to the outer LT encoder of the Raptor code generating the first  $K$  encoding symbols according to figure 3GPP TS 26.346 [6], clause B.5.2.5.2-1. The matrix  $\mathbf{G}'$  is constructed from matrix  $\mathbf{G}_{\mathbf{LT}}$  by deleting the rows corresponding to already received encoding symbols and by exchanging the columns according to  $\mathbf{c}'$ . In addition, the rows in  $\mathbf{G}'$  get assigned the corresponding ESIs and these labels are tracked in  $\mathbf{v}'$ .
4. A new decoding matrix  $\mathbf{A}'$  is constructed in the following way:



**Figure 7: New decoding matrix A'**

5. In addition, a row label vector  $\mathbf{v}$  is generated by the vertical stacking of  $\mathbf{n}$  and  $\mathbf{v}'$ , i.e.  $\mathbf{v}=[\mathbf{n}^T \mathbf{v}'^T]^T$  whereby  $\mathbf{n}$  represents a vector containing any  $\text{rank}(\mathbf{U})=\text{dim}(\mathbf{U})$  entries such that any label of  $\mathbf{n}$  can be distinguished from any label in  $\mathbf{v}'$ . In the remainder we assume  $\mathbf{n}$  being an all -1 vector of dimension  $\text{rank}(\mathbf{U})$ .
6. Apply the maximum Gaussian elimination process to  $\mathbf{A}'$ , as described in clause 6.1.3.3, with tracking of row labels  $\mathbf{v}$ . The process returns the exchanged row labels  $\mathbf{v}^*$ .
7. The ESIs of the encoding symbols forming a minimum set of repair symbols are obtained by the labels in  $\mathbf{v}^*$  which are not -1.

### 6.1.3.2 Option 2: Determination of a sufficient set of consecutive encoding symbols for repair

The following algorithm operating on matrix  $\mathbf{A}$  is used to determine a sufficient set of consecutive encoding symbols for successful repair:

1. Assume  $\mathbf{c}$  to be the column index vector of length  $L$  with labels such that column exchanges can be tracked, e.g. for all  $i=0, \dots, L-1$   $c[i]=i$ .
2. Apply the maximum Gaussian elimination process, as described below, to  $\mathbf{A}$ , with tracking of column labels  $\mathbf{c}$ . The process returns matrices  $\mathbf{U}$  and  $\mathbf{W}$  as well as the modified column label vector  $\mathbf{c}'$  of dimension  $L$ .
3. Assume that  $R_{\text{low}}$  is one higher than the largest ESI received and that  $R_{\text{high}}=R_{\text{low}}+m-1$ . Generate an  $m$  by  $L$  matrix  $\mathbf{G}'$ , whereby  $m$  is equal to or only slightly greater than the minimum number of missing repair symbols  $L-\text{rank}(\mathbf{U})$  by vertically stacking rows that correspond to the outer LT encoder of the Raptor code for all ESI from  $R_{\text{low}}, \dots, R_{\text{high}}$ .
4. A new decoding matrix  $\mathbf{A}'$  is constructed according to figure 7.
5. Apply the maximum Gaussian elimination process to  $\mathbf{A}'$  which returns some different  $\mathbf{U}$  and  $\mathbf{W}$  as described in clause 6.1.3.3.
6. If  $\mathbf{W}$  is not the empty matrix, then:
  - Set  $R_{\text{high}}=R_{\text{high}}+1$
  - Generate an 1 by  $L$  matrix  $\mathbf{G}'$  constructed according to the outer LT encoder of the Raptor code for  $\text{ESI}=R_{\text{high}}$ .
  - Go to 4
7. the ESIs of the encoding symbols forming a minimum set of repair symbols are obtained by requesting all symbols with ESI from  $R_{\text{low}}, \dots, R_{\text{high}}$ .

### 6.1.3.3 Maximum Gaussian elimination

Assume that we have given any matrix  $\mathbf{X}$  as well as possibly a vector of row labels  $\mathbf{v}$  or possibly a column label vector  $\mathbf{c}$  or possibly both. A maximum Gaussian elimination is an algorithm similar to standard Gaussian elimination, in which the main diagonal is extended to its maximum limit, i.e., the number of 1s in the main diagonal after this algorithm has been applied, correspond to the rank of the input matrix  $\mathbf{X}$ , i.e.,  $\text{rank}(\mathbf{X})$ .

To be more specific assume that matrix  $\mathbf{X}$  is conceptually divided into 4 parts as shown in figure 8.

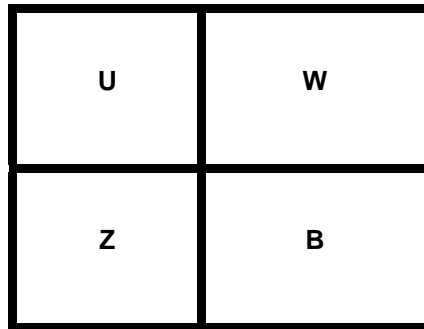


Figure 8: Conceptual division of  $\mathbf{X}$  into 4 blocks

where  $\mathbf{U}$  is a square-upper-matrix with 1s in the main diagonal and zeros below the main diagonal,  $\mathbf{Z}$  is a zero matrix and  $\mathbf{W}$  and  $\mathbf{B}$  are any arbitrary matrices with appropriate dimensions. Initially,  $\mathbf{U}$ ,  $\mathbf{W}$ , and  $\mathbf{Z}$  have dimensions such that  $\mathbf{B}=\mathbf{X}$ .

In the maximum Gaussian elimination process, the matrix  $\mathbf{X}$  and if present, the row label vector  $\mathbf{v}$  and column label vector  $\mathbf{c}$ , are now processed and modified in the following way:

1. Partition the matrix  $\mathbf{X}$  in  $\mathbf{U}$ ,  $\mathbf{Z}$ ,  $\mathbf{W}$ , and  $\mathbf{B}$  as shown in figure 8 such that  $\mathbf{U}$  is a square-upper-matrix with 1s in the main diagonal and zeros below the main diagonal,  $\mathbf{Z}$  is a zero matrix and  $\mathbf{W}$  and  $\mathbf{B}$  are any arbitrary matrices with appropriate dimensions.
2. If  $\mathbf{B}$  is the zero matrix, the algorithm stops and returns matrices  $\mathbf{U}$  and  $\mathbf{W}$ , if  $\mathbf{v}$  is present, the first  $\text{rank}(\mathbf{U})$  components of  $\mathbf{v}$  in some vector  $\mathbf{v}'$ , and if  $\mathbf{c}$  is present, the entire vector  $\mathbf{c}$ .
3. Otherwise,  $\mathbf{B}$  is transformed using row/column exchange(s) into a matrix with a 1 in the upper-left corner. The following operations on  $\mathbf{B}$  are allowed:
  - a) row exchange, accompanied by the exchange of row labels in  $\mathbf{v}$ , if present.
  - b) column exchange, accompanied by the exchange of column labels in  $\mathbf{c}$ , if present.
4. by means of row additions, the rows of  $\mathbf{B}$  (except the first row) are eliminated, i.e. 0s are produced in all rows of the first column of  $\mathbf{B}$  except for the first row.
5. the process restarts with the updated matrix  $\mathbf{X}$  in 1.

### 6.1.4 On choosing the SDU size

This clause provides a simple analysis that suggests how to choose the SDU size. The crux of the analysis is to notice that there is a fundamental tradeoff between two competing factors that suggest how to choose the SDU size. The two factors are the relative length of the SDU header compared to the SDU size, and the SDU loss rate induced by PDU loss. Generally the SDU header size is fixed by other considerations, and the PDU loss rate is determined by characteristics of the underlying network. Given a fixed SDU header size and PDU loss rate, making the SDU larger means the header wastes less space per SDU, whereas making the SDU smaller means the SDU loss induced by PDU loss is smaller. The MBMS FEC code has the property that data (which is a source file in the case of the file download service or a source block in the case of the streaming service) can be recovered with high probability from the reception of any set of encoding packets only slightly greater in length to the data, independent of packet loss amounts or patterns. The loss of SDUs has the same negative impact on wasted bandwidth in terms of delivering the data as the wasted (but necessary) SDU header space. Thus, the goal is to choose an SDU length so that the bandwidth wasted due to headers

and SDU loss induced by PDU loss is minimized. (It is important to note that this is not trying to minimize total SDU loss, only the contribution to SDU loss due to PDU loss. Other sources of SDU loss, e.g. cell change loss, cell congestion loss, backbone loss, UE unavailable loss, all independently contribute to bandwidth wastage but do not affect the analysis of how to choose the SDU size based on balancing the header wastage against the PDU loss induced wastage.)

#### 6.1.4.1 Analysis

Let  $H$  be the SDU header size (which for example consists of the IP/UDP/FLUTE headers), let  $B$  be the PDU size and let  $p$  be the PDU loss probability, and all of these parameters are fixed. Let  $P$  be the overall SDU size (including headers) that is to be set based on the fixed parameters. Let  $h = H/P$  be the fractional header wastage. For example, if  $H = 44$  bytes,  $P = 440$  bytes then  $h = 0.1$ . Let  $q$  be the SDU loss probability induced by PDU loss. To optimize the value of  $P$ , one would want to choose the value of  $P$  to make  $h + q$  minimal. The contribution [1] derives the value of  $q$  as a function of  $P$  and  $B$  and  $p$ . From 3GPP TR 21.905 [1], and using  $N \cdot p$  as an upper bound on the probability that  $N$  PDUs are lost, an upper bound on the value of  $q$  is  $(1+P/B) \cdot p$ . The actual value of  $q$  is at least  $(1 - \varepsilon/2)$  times this upper bound when  $N \cdot p < \varepsilon$  for  $N = \text{ceil}(P/B)+1$ , and hereafter the upper bound for  $q$  will be used for the actual value of  $q$ . To minimize  $h + q$  means setting  $P$  so as to minimize  $H/P + (1+P/B) \cdot p$ , and this is minimized by setting  $P = \sqrt{H \cdot B/p}$ . Let  $A = \sqrt{H \cdot p/B}$ . The overall wastage for this value of  $P$  is then  $h + q = p + 2 \cdot A$ .

The values of  $H$  and  $B$  are determined by the network and link layer protocols used for transport. For example,  $H = 44$  bytes (IP/UDP/FLUTE headers) and  $B = 640$  bytes for UTRAN or  $B = 30$  bytes for GERAN. Note that if Robust Header Compression is applied in the RAN then the value of  $H$  in these calculations must be reduced accordingly.

The value of  $p$  may or may not be known, but it may be possible to heuristically roughly estimate the average value of  $p$  and use this to decide on the value of  $P$ .

Suppose for example  $H = 44$  bytes,  $B = 640$  bytes and  $p = 0.1$ . The computed value of  $P$  is 531 bytes,  $h = 0.083$ ,  $q = 0.183$  and thus the overall wastage  $h + q = 0.266$ . As another example, suppose  $H = 44$  bytes,  $B = 30$  bytes and  $p = 0.01$ . The computed value of  $P$  is 364 bytes,  $h = 0.121$ ,  $q = 0.131$  and thus the overall wastage  $h + q = 0.252$ .

The penalty for using a value for  $p$  to determine  $P$  that is larger or smaller than the actual average PDU loss is that there will be wasted bandwidth, either from a header too large if the value of  $p$  is estimated higher than the actual PDU loss rate or from too much SDU loss induced by PDU loss if the value of  $p$  is estimated lower than the actual PDU loss rate. If for example the actual PDU loss is  $p$  and the value used to compute  $P$  is  $\beta \cdot p$  then the overall wastage will be  $p + (\sqrt{\beta} + \sqrt{1/\beta}) \cdot A$  instead of  $p + 2 \cdot A$ . Since the first term  $p$  is the same in both expressions, the ratio of the second terms is an upper bound on the relative wastage of choosing an incorrect  $p$  value as a function of  $\beta$ , and this ratio is  $(\sqrt{\beta} + \sqrt{1/\beta})/2$ . For example if  $\beta$  is anywhere in the range from  $1/4$  to 4 then the relative wastage is at most a factor of 1.25 higher than it would be if  $p$  were estimated precisely, and typically the actual factor (when the first terms are accounted for) is less than 1.25. For example if  $H = 44$  bytes,  $B = 640$  bytes and  $p = 0.1$  and  $\beta = 1/4$  (meaning that the estimate of the PDU loss used to set the value of  $P$  is  $\beta \cdot p = 0.025$  whereas the actual PDU loss is  $p = 0.1$ ) then the chosen value of  $P$  is 1,062 bytes and the wastage is  $0.1 + 2.5 \cdot A$  where  $A = 0.083$ , and thus the wastage is 0.307. If the correct value of PDU loss were used instead to choose the value of  $P$  then  $P$  would be set to 531 bytes and the wastage would be  $0.1 + 2 \cdot A = 0.266$ . Thus, the ratio of the actual to the idea wastage is 1.15.

## 6.2 Streaming delivery method

The MBMS Streaming Delivery Method aims at continuous transmission of data and the immediate play-out via the display and/or the loudspeaker. Mobile terminals retrieve transmission details like Multicast IP Address, TMGI and the used ports before the MBMS UEs can activate the reception. Upon interaction of the user and when all parameters are known, the UE "tunes in" the transmission and stays until the user decides to leave the transmission. This can happen before the transmission ends.

For Release 6 no dynamic bandwidth adaptation is foreseen. The transmission bandwidth is determined by the BM-SC once and not changed during the life-time of the MBMS streaming session.

## 7 Usage scenarios

### 7.1 Service Discovery/Announcement

Below an example for an aggregated service announcement document using multipart MIME type "multipart/related" (RFC2557) is described.

```
MIME-Version: 1.0
Content-Type: multipart/related; boundary=D8119DDD2D264D4480E57277; type=" application/mbms-user-
service-description+xml"
Content-Length: <length of the stream>

--D8119DDD2D264D4480E57277

Content-Type: application/mbms-user-service-description+xml

<?xml version="1.0" encoding="UTF-8"?>
<bundleDescription
  xmlns="urn:3gpp:metadata:2005:MBMS:userServiceDescription"
  xmlns:xsi="http://www.w3.org/2001/XMLSchema-instance"
  xmlns:sv="urn:3gpp:metadata:2009:MBMS:schemaVersion"
  xsi:schemaLocation="urn:3gpp:metadata:2005:MBMS:userServiceDescription USD-schema-Main.xsd">
  <userServiceDescription serviceId="urn:3gpp:1234567890coolcat">
    <name lang="EN">something in english</name>
    <serviceLanguage>EN</serviceLanguage>
    <deliveryMethod sessionDescriptionURI="fragmentdir/session1.sdp">
      <sv:delimiter>0</sv:delimiter>
      <sv:delimiter>0</sv:delimiter>
    </deliveryMethod>
    <deliveryMethod
      sessionDescriptionURI="fragmentdir/session2.sdp"
      associatedProcedureDescriptionURI="fragmentdir/procedureX.xml">
      <sv:delimiter>0</sv:delimiter>
      <sv:delimiter>0</sv:delimiter>
    </deliveryMethod>
    <sv:delimiter>0</sv:delimiter>
    <sv:delimiter>0</sv:delimiter>
  </userServiceDescription>
  <sv:schemaVersion>2</sv:schemaVersion>
</bundleDescription>

--D8119DDD2D264D4480E57277
Content-Type: application/sdp
Content-Location: fragmentdir/session1.sdp

v=0
o=ghost 2890844526 2890842807 IN IP4 192.168.10.10
s=3GPP MBMS Streaming SDP Example
i=Example of MBMS streaming SDP file
u=http://www.infoserver.example.com/ae600
e=ghost@mailserver.example.com
c=IN IP4 224.1.1.2.3
t=3034423619 3042462419
b=AS:77
a=mbms-mode:broadcast 123869108302929 1
a=source-filter:incl IN IP6 * 2001:210:1:2:240:96FF:FE25:8EC9
a=FEC-declaration:0 encoding-id=1
m=video 4002 RTP/AVP 97 96 100
b=TIAS:62000
b=RR:0
b=RS:600
a=rtpmap:96 H263-2000/90000
a=fmtp:96 profile=3;level=10
a=framesize:96 176-144
a=rtpmap: 97 rtp-mbms-fec-tag/90000
a=fmtp:97 opt=96; FEID=129;FIID=12435;FOTI="1SCxWEMNe397m24SwgyRhg=="
a=rtpmap: 100 rtp-mbms-fec-symbols/10000
a=fmtp:100 FEID=129;FIID=12435;FOTI="1SCxWEMNe397m24SwgyRhg==" ; min-buffer-time=2600
m=audio 4004 RTP/AVP 99 98 101
b=AS:15
b=RR:0
b=RS:600
a=rtpmap:98 AMR/8000
a=fmtp:98 octet-align=1
```

```

a=rtpmap: 99 rtp-mbms-fec-tag/8000
a=fmtp: 99 opt=98;FEID=129;FIID=12435;FOTI="1SCxWEMNe397m24SwgyRhg=="
a=rtpmap: 101 rtp-mbms-fec-symbols/10000
a=fmtp:101 FEID=129;FIID=12435;FOTI="1SCxWEMNe397m24SwgyRhg==" ; min-buffer-time=2600

--D8119DDD2D264D4480E57277
Content-Type: application/sdp
Content-Location: fragmentdir/session2.sdp

v=0
o=user123 2890844526 2890842807 IN IP6 2201:056D::112E:144A:1E24
s=File delivery session example
i=More information
t=2873397496 2873404696
a=mbms-mode:broadcast 1234
a=FEC-declaration:0 encoding-id=128; instance-id=0
a=source-filter: incl IN IP6 * 2001:210:1:2:240:96FF:FE25:8EC9
a=flute-tsi:3

m=application 12345 FLUTE/UDP 0
c=IN IP6 FF1E:03AD::7F2E:172A:1E24/1
a=lang:EN
a=FEC:0

--D8119DDD2D264D4480E57277--
Content-Type: application/mbms-associated-procedure-description+xml
Content-Location: fragmentdir/procedureX.xml

<?xml version="1.0" encoding="UTF-8"?>
<associatedProcedureDescription
  xmlns="urn:3gpp:metadata:2005:MBMS:associatedProcedure"
  xmlns:sv="urn:3gpp:metadata:2009:MBMS:schemaVersion"
  xmlns:xsi="http://www.w3.org/2001/XMLSchema-instance"
  xsi:schemaLocation="urn:3gpp:metadata:2005:MBMS:associatedProcedure associatedprocedure.xsd">
  <postFileRepair
    offsetTime="5"
    randomTimePeriod="10">
    <serviceURI>http://mbmsrepair.operator.umts/</serviceURI>
    <serviceURI>http://mbmsrepair1.operator.umts/</serviceURI>
    <serviceURI>http://mbmsrepair2.operator.umts/</serviceURI>
  </postFileRepair>
  <postReceptionReport
    offsetTime="5"
    randomTimePeriod="10"
    reportType="StaR-all"
    samplePercentage="100"
    forceTimeIndependence="0">
    <serviceURI>http://mbmsrepair.operator.umts/</serviceURI>
  </postReceptionReport>
  <sv:schemaVersion>1</sv:schemaVersion>
</associatedProcedureDescription>

--D8119DDD2D264D4480E57277--

```

## 7.2 MBMS download delivery method

The MBMS Download Services use the functionality of the MBMS Download Delivery Method, although other user services may also build on this delivery method. Users are informed, via the UI, that new information is locally available. However, this is not a constraint or a requirement of an MBMS download user service. User notification and user-interaction with the download process may or may not be part of a download application UI.

After the data transmission phase the MBMS User Service Receiver may request missing data from a "Associated-Delivery Processing Server". Output of the MBMS Receiver is in case of the MBMS Download delivery method a "file". The further processing of the received data and the proper presentation is not in scope of the present document. It is assumed existing user play-out.

### 7.2.1 Example: Video clip download service use-case

#### 7.2.1.1 Use-case description

The UE has activated a video-clip distribution service. The service starts 5<sup>th</sup> of August 2005 and ends on 18<sup>th</sup> of December (half football season). The UE receives every Saturday afternoon (during a time of 4 hours) approximately



every 30 minutes a video clip. The BM-SC has the Ipv4 address: 192.168.1.1 and uses the multicast IP address 224.20.20.4 for service distribution.

### 7.2.1.2 Announced Metadata Fragments

The MBMS User Service is active from the 5<sup>th</sup> of August until the 18<sup>th</sup> of December. The MBMS bearers are activated, if there is any video clip to distribute. Video clips are mostly distributed during weekends, seldom during the week.

To activate the video clip service, the client has received the following metadata fragments through a service announcement procedure:

#### User Service Description Fragment:

```
<?xml version="1.0" encoding="UTF-8"?>
<bundleDescription
  xmlns="urn:3gpp:metadata:2005:MBMS:userServiceDescription"
  xmlns:xsi="http://www.w3.org/2001/XMLSchema-instance"
  xmlns:sv="urn:3gpp:metadata:2009:MBMS:schemaVersion"
  xsi:schemaLocation="urn:3gpp:metadata:2005:MBMS:userServiceDescription USD-schema-Main.xsd">
  <userServiceDescription serviceId="urn:VideoClipDistr-1">
    <deliveryMethod
      sessionDescriptionURI="http://example.org/videoclip-distr.sdp"
      associatedProcedureDescriptionURI="http://www.example.com/default-repair-settings.xml">
      <sv:delimiter>0</sv:delimiter>
      <sv:delimiter>0</sv:delimiter>
    </deliveryMethod>
    <sv:delimiter>0</sv:delimiter>
    <sv:delimiter>0</sv:delimiter>
  </userServiceDescription>
  <sv:schemaVersion>2</sv:schemaVersion>
</bundleDescription>
```

#### Session Description Fragment:

```
v=0
o=user123 3332188800 3343766400 IN IP4 192.168.1.1
s=VideoClip Distribution Service example
i=More information
t=3332188800 3343766400
a=mbms-mode:broadcast 1234
a=FEC-declaration:0 encoding-id=1
a=source-filter: incl IN IP4 * 192.168.1.1
a=flute-tsi:116
m=application 12345 FLUTE/UDP 0
c=IN IP4 224.20.20.4
b=64
a=lang:DE
a=FEC:0
```

The t= lines includes the session start and session stop information. Session start is 3332188800 (== 5<sup>th</sup> of August 2005) and session stop is 3343766400 (== 18<sup>th</sup> of December 2005).

The User service description and the session description fragments are used to activate the MBMS bearer service with multicast IP address 224.20.20.4 and TMGI 1234. The user service uses in this use-case an MBMS broadcast bearer service. The bearer service remains active until the 18<sup>th</sup> of December.

#### File Repair Procedure Fragment:

The post delivery file repair procedure is configured with a back-off window of 40 seconds. It was assumed, that a group of 5 000 UEs need 10 kByte each of repair data, assuming that the file repair server can provide repair data with a capacity of 10 Mbps.

```
<?xml version="1.0" encoding="UTF-8"?>
<associatedProcedureDescription
  xmlns="urn:3gpp:metadata:2005:MBMS:associatedProcedure"
  xmlns:xsi="http://www.w3.org/2001/XMLSchema-instance"
  xmlns:sv="urn:3gpp:metadata:2009:MBMS:schemaVersion"
  xsi:schemaLocation="urn:3gpp:metadata:2005:MBMS:associatedProcedure associatedprocedure.xsd">
  <postFileRepair offsetTime="5" randomTimePeriod="40">
    <serviceURI>http://mbmsrepair.operator.umts/path/repair-service</serviceURI>
    <serviceURI>http://mbmsrepair2.operator.umts/path/repair-service</serviceURI>
  </postFileRepair>
```

```
<sv:schemaVersion>1</sv:schemaVersion>
</associatedProcedureDescription>
```

### 7.2.1.3 Reception of a video clip

The download transmission session starts on the 7<sup>th</sup> of August 2005, 19:18h in this use-case. The download transmission session contains only one FLUTE file delivery table (FDT), one file and an update of the Associated Delivery Procedure Description (ADPD) instance. The size of the file is 300 kbyte. The file transmission is FEC protected using the MBMS FEC code. A redundancy overhead of 16 % is added to the file transmission. The FDT instance and ADPD instance are not FEC protected because they are too small in size to benefit from FEC protection. To ensure their reliable delivery, FDT instance and ADPD instance may be transmitted repeatedly.

Note that ADPD has critical information relevant to point-to-point file repair and delivery verification reports. If the ADPD is sent in-band alone and is lost during in-band FLUTE transmission, then point-to-point file repair is not possible. Hence it is recommended to provide a default ADPD instance in User Service Description. The most recently delivered configuration file takes priority. ADPD received in-band with the download session, overwrites earlier received parameters. In this example, the update of the Associated Procedure Description instance contains the URI of an additional repair server.

```
<?xml version="1.0" encoding="UTF-8"?>
<associatedProcedureDescription
  xmlns="urn:3gpp:metadata:2005:MBMS:associatedProcedure"
  xmlns:xsi="http://www.w3.org/2001/XMLSchema-instance"
  xmlns:sv="urn:3gpp:metadata:2009:MBMS:schemaVersion"
  xsi:schemaLocation="urn:3gpp:metadata:2005:MBMS:associatedProcedure associatedprocedure.xsd">
  <postFileRepair offsetTime="5" randomTimePeriod="40">
    <serviceURI>http://mbmsrepair.operator.umts/path/repair-service</serviceURI>
    <serviceURI>http://mbmsrepair2.operator.umts/path/repair-service</serviceURI>
    <serviceURI>http://mbmsrepair3.operator.umts/path/repair-service</serviceURI>
  </postFileRepair>
  <sv:schemaVersion>1</sv:schemaVersion>
</associatedProcedureDescription>
```

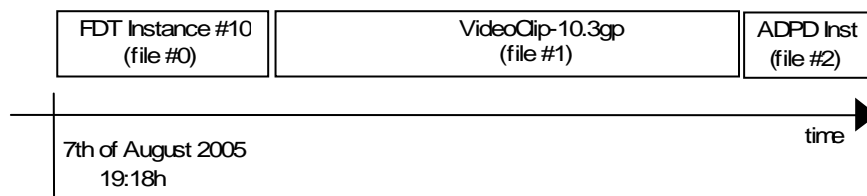
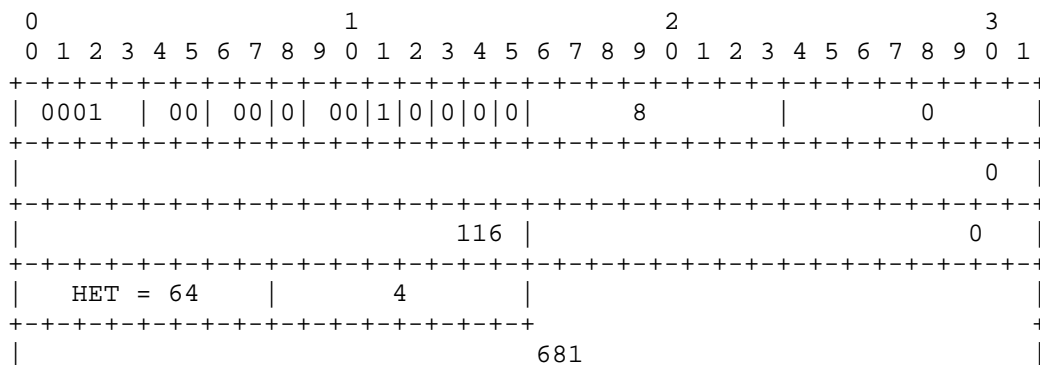


Figure 9: Delivery of video clip

The FLUTE File delivery table is transmitted using the Transport Object ID number 0. The BM-SC starts sending the FLUTE FDT packets at 19:18h.

The TSI and the TOI fields are set to 16bit respectively. The TSI value for the session is 116. TOI value for FLUTE FDT packets is 0. The length of the FDT Instance object is 681 byte. The Compact No Code FEC is used for FDT transmission. The symbol length is set to 512 byte. Maximum source block length is set to 1000.

The FLUTE packet headers, which are used to forward the FDT are depicted below. All values in decimal:



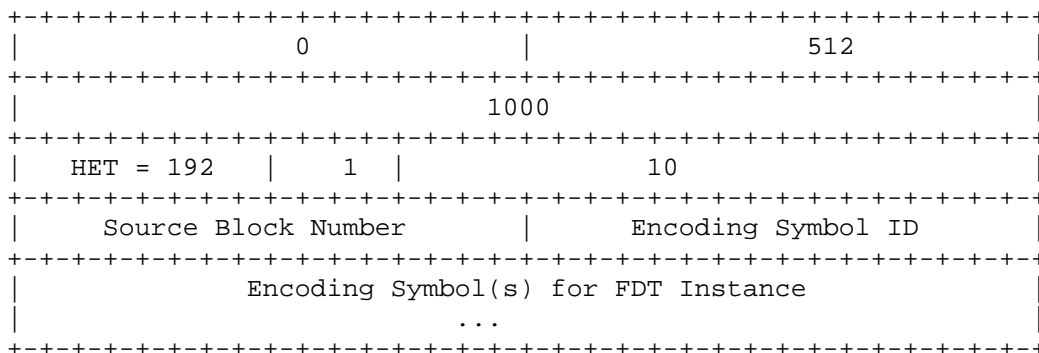


Figure 10: FLUTE FDT packet header

The FLUTE File Delivery Table instance for this use-case is depicted below. The FDT instance expires on the 7<sup>th</sup> of August 2005, 19:58:46h (3332430520 in NTP format).

```

<?xml version="1.0" encoding="UTF-8"?>
<FDT-Instance
  xmlns="urn:IETF:metadata:2005:FLUTE:FDT"
  xmlns:xsi="http://www.w3.org/2001/XMLSchema-instance"
  xmlns:sv="urn:3gpp:metadata:2009:MBMS:schemaVersion"
  xsi:schemaLocation="urn:IETF:metadata:2005:FLUTE:FDT FLUTE-FDT-3GPP-Main.xsd"
  Expires="3332430526">

  <File
    TOI="1"
    Content-Location="http://www.example.com/bundesliga/VideoClip-10.3gp"
    Content-Type="video/3gpp"
    FEC-OTI-FEC-Encoding-ID="1"
    Transfer-Length="307200"
    FEC-OTI-Encoding-Symbol-Length="256"
    FEC-OTI-Scheme-Specific-Info="MDAwMTAyMDQ=">
    <sv:delimiter>0</sv:delimiter>
    <sv:delimiter>0</sv:delimiter>
  </File>

  <File
    TOI="2"
    Content-Location="http://www.example.com/bundesliga/adpd-inst.xml"
    Content-Type="application/mbms associated-procedure-description+xml"
    FEC-OTI-FEC-Encoding-ID="0"
    Transfer-Length="520"
    FEC-OTI-Maximum-Source-Block-Length="2"
    FEC-OTI-Encoding-Symbol-Length="512">
    <sv:delimiter>0</sv:delimiter>
    <sv:delimiter>0</sv:delimiter>
  </File>

  <sv:schemaVersion>2</sv:schemaVersion>
  <sv:delimiter>0</sv:delimiter>
</FDT-Instance>
    
```

The FEC Encoding ID field identifies the MBMS FEC scheme (i.e. Raptor Code). The value "1" is assigned by IETF to the Raptor Code.

The value of the FEC scheme specific info is base64 Binary encoded. The base 64 value "MDAwMTAyMDQ=" decodes to 0x10204hex (Z = 1; N = 2; A = 4).

The FDT expiration time (i.e. "expire" attribute) is an unsigned integer representing the time in seconds relative to 0 hours 1 January 1900 (i.e. the 32 most significant bits of a 64 bit Network Time Protocol (NTP) time value). If a UE is not time synchronized with the mobile network, then the UE must calculate an expiration time, which is relative to the reception of the FLUTE FDT packet.

### 7.2.1.4 File Repair procedure

The file correction use case is based on the file reception use-case described in clause 7.2.1.3.

The post delivery file repair procedure (i.e. one possible associated delivery procedure) is configured with a back-off window of 40 seconds. It was assumed, that a group of 5 000 UEs would need 10 kByte each of repair data, assuming that the file repair server can provide repair data with a capacity of 10 Mbps.

```
<?xml version="1.0" encoding="UTF-8"?>
<associatedProcedureDescription
  xmlns="urn:3gpp:metadata:2005:MBMS:associatedProcedure"
  xmlns:xsi="http://www.w3.org/2001/XMLSchema-instance"
  xmlns:sv="urn:3gpp:metadata:2009:MBMS:schemaVersion"
  xsi:schemaLocation="urn:3gpp:metadata:2005:MBMS:associatedProcedure associatedprocedure.xsd">
  <postFileRepair offsetTime="5" randomTimePeriod="40">
    <serviceURI>http://mbmsrepair.operator.umts/path/repair-service</serviceURI>
    <serviceURI>http://mbmsrepair2.operator.umts/path/repair-service</serviceURI>
    <serviceURI>http://mbmsrepair3.operator.umts/path/repair-service</serviceURI>
  </postFileRepair>
</associatedProcedureDescription>
```

The following table is created assuming the recommended MBMS FEC parameter configurations.

File-Size	300 kbyte
FEC Overhead	16%
Z (Number of Source Blocks)	1
N (Number of sub-blocks)	2
A (Alignment factor)	4
P (Payload size)	512 byte
G (Symbols per packet)	2
T (Symbol Size)	256 byte
Generated Source Packets	600
Generated Repair Packets	96

#### UE\_A:

It is assumed that UE\_A switched from a very good coverage to almost no coverage 20 seconds before the transmission ended. It is assumed for UE\_A, that a user enters a subterranean garage or a sub-way station while receiving an MBMS download transmission session.

The UE\_A misses the last half of the MBMS transmission, thus packet 348 until packet 696 are lost. The file transmission was organized such that the repair packets are transmitted after the source packets. Thus, a part of the source and all repair packets are lost. Since there are two symbols per packet, the corresponding start ESI of the lost packets is 696.

After the FDT instance has expired (thus 46 seconds after receiving the FLUTE FDT packet), the UE\_A starts the file repair procedure with calculating the procedure back-off time.

$$\text{Backoff-time} = \text{rnd}() \times 40 \text{ s} + 5 \text{ s}$$

The UE\_A selects randomly one server URI from the Associated delivery procedure. In this use-case the UE chooses the second server URI: <http://mbmsrepair2.operator.umts>.

For this use-case the `rnd()` function has returned "0.275" as result. Thus, the UE defers the opening of the TCP connection to the host `mbmsrepair2.operator.umts` by 16 seconds. As soon as the TCP connection is established, the UE sends the following HTTP GET request to the file repair server.

The File Repair request line:

```
GET http://mbmsrepair2.operator.umts/path/repair-
service?fileURI=www.example.com/bundesliga/VideoClip-10.3gp&SBN=1;ESI=696-1198
HTTP/1.1
```

Since the MBMS UE has successfully received the first part of the source block, it needs to request only the remaining part of the source block to completely recover the file. The MBMS FEC decoder need not be invoked in this example.

The UE\_A gets the remaining parts of the file as response.

#### UE\_B:

UE\_B switched from a very good coverage to almost no coverage 20 seconds before the transmission ended and re-entered good coverage 15 seconds later.

The UE\_B thus misses packets 348 to packet 607 (inclusive). The file transmission was organized such that the repair packets are transmitted after the source packets. Thus, a part of the source is lost (i.e. 251 source packets), but most repair packets have been received (i.e. 88). The total number of received packets is 435 and since there are two symbols per packet, then 870 symbols have been received.

After the FDT instance has expired (thus 46 seconds after receiving the FLUTE FDT packet), the UE\_A starts the file repair procedure with calculating the procedure back-off time.

$$\text{Backoff-time} = \text{rnd}() \times 40 \text{ s} + 5 \text{ s}$$

The UE\_B selects randomly one server URI from the Associated delivery procedure. In this use-case the UE chooses the second server URI: `http://mbmsrepair2.operator.umts`

For this use-case the `rnd()` function has returned "0.275" as result. Thus, the UE defers the opening of the TCP connection to the host `mbmsrepair2.operator.umts` by 16 seconds. As soon as the TCP connection is established, the UE sends the following HTTP GET request to the file repair server.

A minimum of 330 additional symbols are required to ensure successful decoding of the file. The UE should use one of the algorithms defined in clause 6.1.3 to determine a range of ESIs that will result in successful reception. In this case, the UE determines that an additional 12 symbols (1 %) will be sufficient to ensure recovery. The UE thus requests an additional 342 symbols with ESIs of 1 392 (one greater than the highest ESI received) or above.

The File Repair request line:

```
GET          http://mbmsrepair2.operator.umts/path/repair-
            service?fileURI=www.example.com/bundesliga/VideoClip-10.3gp&SBN=1;ESI=1392+342
            HTTP/1.1
```

UE\_B receives the repair symbols in response and can thus decode the file. Note that the UE is not permitted to request all missing source symbols, since this would result in an unnecessary load on the repair server (in this case 504 symbols).

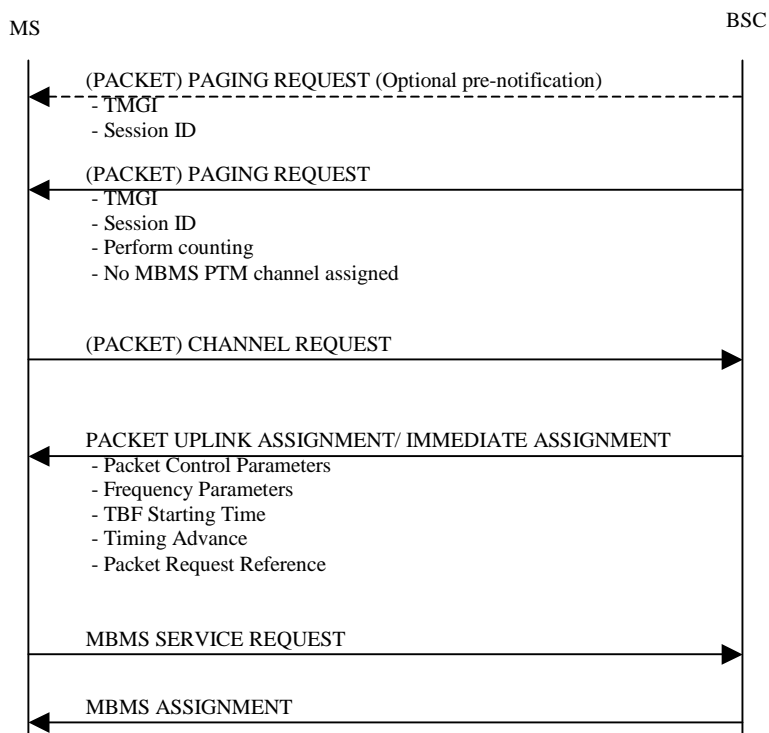
## 7.2.2 The usage of the MBMS session Identity in file download delivery

### 7.2.2.1 Introduction

The MBMS Identity field can be used by the BM-SC and terminal to establish an n-to-m mapping between the files of a file download sessions and their corresponding MBMS bearer sessions over which the files are transported.

According to 3GPP TS 23.246 [4], the UEs are notified about the starting (or ongoing) data transmission through MBMS notification procedure (see the example of GERAN in figure 11). Both the TMGI and an optional Session ID are paged to the terminals, independent of their current state (idle or connected), to inform them about the starting data transmission. The UEs use the TMGI and the Session ID to decide whether they are interested in the MBMS session or not. In case of session repetitions, the BM-SC assigns the same TMGI and Session ID to the MBMS session. This allows the UEs to recognize that the session is repeated and decide not to receive the data in case they already received it correctly.

The usage of the Session ID field is optional. Both UE and BM-SC may decide to ignore the Session ID field. The UE will then assume that the MBMS session is a new session and make its decision independently. The BM-SC may decide not to use the Session ID field, in which case it will not signal it to the UEs within the FDT nor during the notification.



**Figure 11: Notification process in the GERAN**

The BM-SC uses the FDT of a file download session to indicate for a file or a file group the Session ID value of the MBMS session to carry the file(s). The UE establishes a table to save the mappings between the Session IDs and the files. Each record has a validity time, which is signalled by the "MBMS-Session-Identity-Expiry" in the FDT-Instance. This expiry time applies to all MBMS Session Identity values declared in the same FDT Instance.

In the following we give some examples of the usage of the MBMS Session Identity.

### 7.2.2.2 Example 1: Usage of the Session ID to detect repetition

Figure 12 depicts the scenario where the terminal receives a notification about a pending MBMS bearer session with session ID value 5. The UE is not aware of the content of the new bearer session, so that it assumes that it is interested in that session. Hence, the UE replies to the notification message to declare to the network that it will receive the data over that MBMS bearer session (which is identified by the TMGI and the Session ID).

Later on, during the download delivery session, the BM-SC decides to retransmit the same files and then uses the same Session ID. In the FDT of the repeated transmission, the same files are declared to belong to the same bearer session. The UE is notified about the new session using the paging information. The UE detects that it has already seen and received the files of that MBMS bearer session correctly. Hence, it decides not to reply to the paging messages and will not receive the corresponding data.

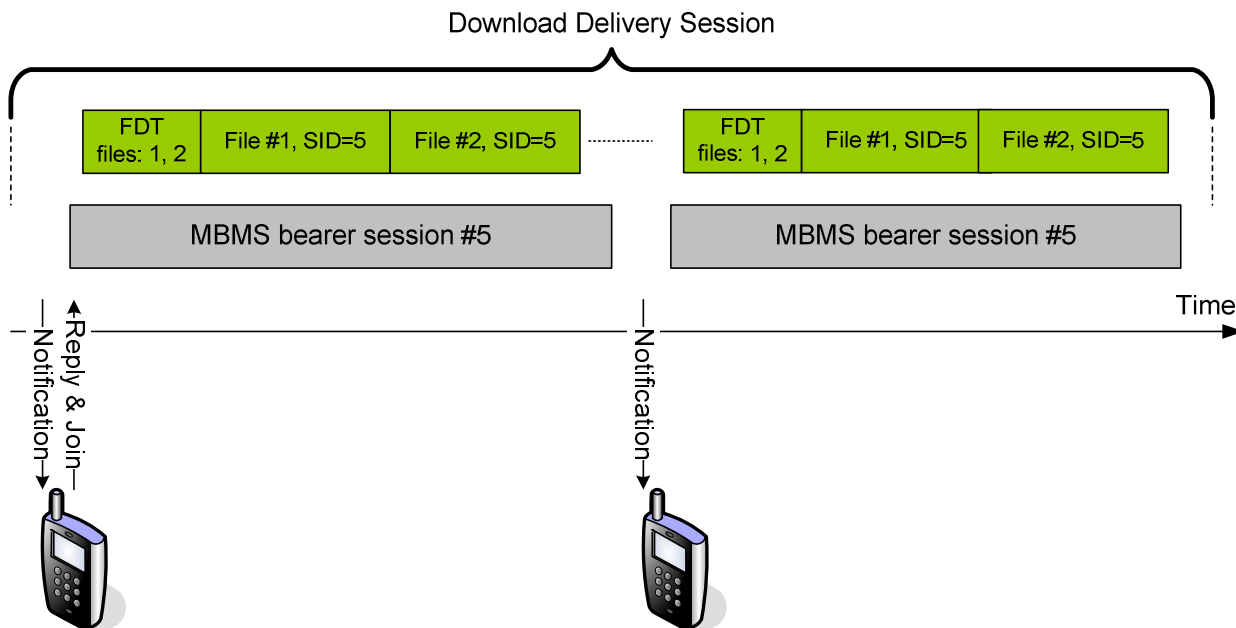


Figure 12: Example of the usage of the Session ID

7.2.2.3 Example 2: Declaration of files of a different MBMS bearer session in the FDT

Figure 13 depicts the scenario where the BM-SC sends an FDT Instance that declares files, which are sent over a different MBMS bearer session. Although file #2 itself is not sent over MBMS bearer session #3, it is declared in the FDT Instance. The UE will detect this and will know the content (or a subset of it) of a forthcoming MBMS bearer session with the Session ID 5.

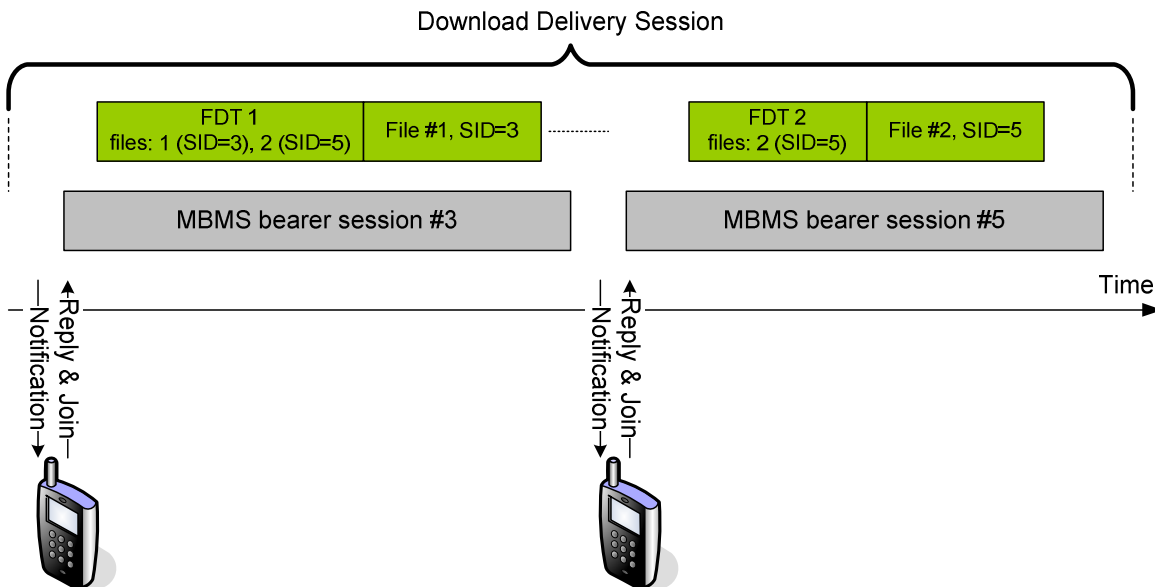


Figure 13: Example of an FDT that declares files of a different FDT

### 7.2.2.4 Example 3: Declaration of files of an MBMS bearer session in several FDT Instances

Figure 14, the example of splitting the declaration of files carried over a given MBMS bearer service is split over several FDT Instances. It also shows that if one of the FDT Instances and the corresponding files are lost, the UE will not be aware about the full content of the MBMS bearer session. This may lead to a wrong behaviour of the UE, in that it may decided not to receive session repetitions, assuming that it correctly received all files.

It is hence recommended that a single FDT Instance is used to declare all files to be carried over the MBMS bearer session.

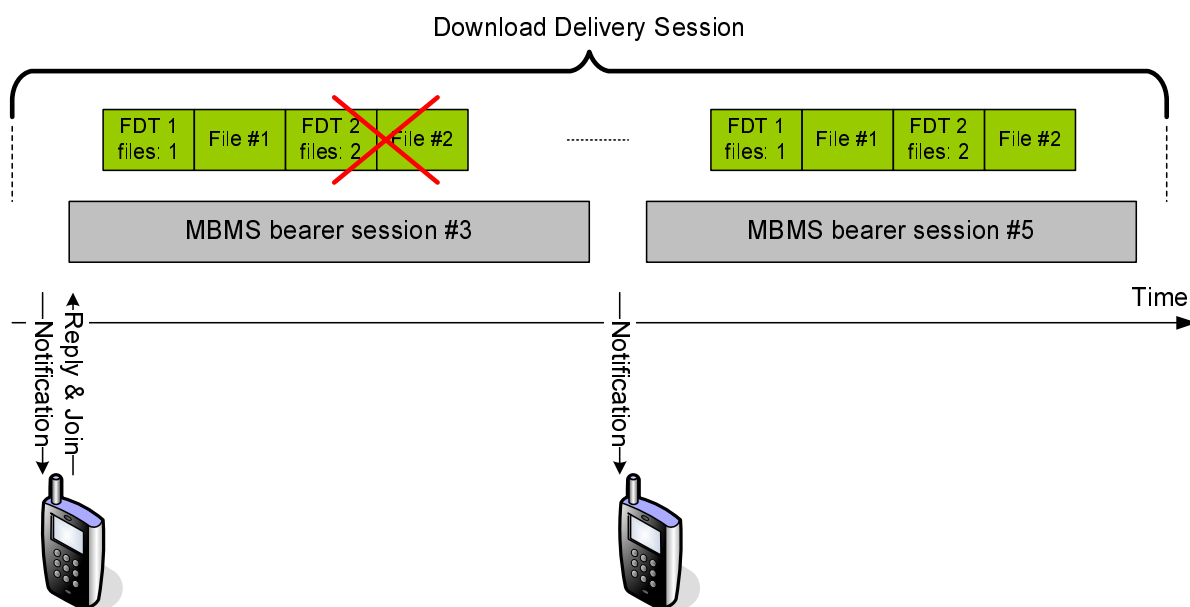


Figure 14: Example of several FDT Instances declaring files for a given MBMS bearer session

## 7.2.3 Partial File Delivery from MBMS Receiver to DASH Client

Please refer to TS 26.247 [21], clause 5.3.2 and clause 7.3.9, as well as to TS26.346 [6], clause 7.9.

## 7.2.4 Communication between MBMS Client and DASH Client

### 7.2.4.1 Introduction

When a DASH Presentation is delivered over MBMS, the BM-SC may only make a selected set of Representations available over MBMS (e.g. only one Audio and one Video Representations). By offering the content over MBMS, the operator wishes to reduce the unicast traffic related to that Presentation to a minimum. However, this cannot be achieved by solely relying on the DASH client to pick the Representations that are delivered over MBMS intuitively. A communication channel and a message are defined to enable inter-operable communication between the MBMS client and the DASH client.

### 7.2.4.2 SAND Message for MBMS Operations

#### 7.2.4.2.1 Common Message

The SAND Message for MBMS Operations (SAMMO) is a message that contains data to be sent to a 3GP-DASH client to provide dynamic information from the DANE for DASH client operation. In the context of clause 7.2.4, the MBMS receiver performs the role of the DANE. Also in the case of MBMS, the MBMS receiver acting as the DANE may be colocated with the DASH client, on the same device, or reside in a separate device.



The SAMMO is an XML-document that is formatted according to the XML schema provided below.

The MIME type of the SAMMO is "application/3gpp-sammo+xml".

The SAMMO delivery is discussed in clause 7.2.4.3.

In order to signal the status of certain resources identified by a Base URL or a Representation identifier, Table 7.2.4.1 provides certain messages.

The semantics are provided in Table 7.2.4.1, the XML schema is provided below.

**Table 7.2.4.1 SAMMO Messages**

Name	Type	Cardinality	Description
<b>Status</b>		0 ... N	
@baseURL	anyURI	CM  Either the @baseURL or the @repid shall be present.	Provides the base URL for the associated resources, i.e. the status holds for all resources referenced by this base URL.
@repId	String	CM  Either the @baseURL or the @repid shall be present.	Provides the value for the representation id, i.e. status holds for all resources associated to a Representation with the value of the parameter.
<b>ResourceStatus</b>	See 7.2.4.2.2	0 ... 1	Provides a resource status as defined in 7.2.4.2
<b>Bitrate</b>	See 7.2.4.2.3	0 ... N	Provides a resource status as defined in 7.2.4.3
<b>AvailabilityTimeOffset</b>	See 7.2.4.2.4	0 ... 1	Provides a resource status as defined in 7.2.4.4

```
<?xml version="1.0"?>
<xs:schema targetNamespace="urn:3gpp:sammo:2014"
  attributeFormDefault="unqualified" elementFormDefault="qualified"
  xmlns:xs="http://www.w3.org/2001/XMLSchema"
  xmlns="urn:3gpp:sammo:2014">
  <xs:annotation>
    <xs:appinfo>SAND Message for MBMS Operations</xs:appinfo>
  </xs:annotation>

  <!-- SAMMO: main element -->
  <xs:element name="SAMMO" type="SAMMOType" />

  <!-- SAMMO Type -->
  <xs:complexType name="SAMMOType">
    <xs:sequence>
      <xs:element name="Status" type="StatusType" minOccurs="0" maxOccurs="unbounded" />
      <xs:any namespace="##other" processContents="lax" minOccurs="0" maxOccurs="unbounded" />
    </xs:sequence>
  </xs:complexType>

  <!-- Status Type -->
  <xs:complexType name="StatusType">
    <xs:sequence>
      <xs:element name="ResourceStatus" type="ResourceStatusType" minOccurs="0" />
    </xs:sequence>
  </xs:complexType>

```

```

<xs:element name="Bitrate" type="BitrateType" minOccurs="0" maxOccurs="unbounded" />
<xs:element name="AvailabilityTimeOffset" type="xs:integer" minOccurs="0" />
<xs:any namespace="##other" processContents="lax" minOccurs="0" maxOccurs="unbounded" />
</xs:sequence>
<xs:attribute name="baseURL" type="xs:anyURI" />
<xs:attribute name="repId" type="xs:string" />
<xs:anyAttribute namespace="##other" processContents="lax" />
</xs:complexType>
</xs:schema>

```

### 7.2.4.2.2 Resource Status

The DANE provides information to the DASH client about the availability and status of certain resources associated to the base URL or the Representation id. This may for example be because the resources is being delivered over MBMS and are expected to be selected by the DASH client regardless of the decision of the rate adaptation algorithm. The message may include status information about the (un)availability of the resources.

The message expresses the status of the resource access at the current time. The DASH client should assume that this status persists until it is informed about a change of the status.

The semantics are provided in Table 7.2.4.1, the XML schema is provided below.

**Table 7.2.4.2 Resource Status**

Name	Type	Cardinality	Description
<b>ResourceStatus</b>			
@status	enum	M	Provides the status of all associated resource to the base URL or Representation, which can be available, unavailable or cached. Cached refers to the case that the resource is cached in the DANE. Available means that a request is expected to be responded with a 2xx code and unavailable means that it is expected that the response would result in a 4xx code.
@reason	string	O	Provides some textual information of the reason, e.g. "you are in broadcast mode".

```

<!--Resource Status -->
<xs:complexType name="ResourceStatusType">
  <xs:sequence>
    <xs:any namespace="##other" processContents="lax" minOccurs="0" maxOccurs="unbounded" />
  </xs:sequence>
  <xs:attribute name="status" type="xs:string" use="required" />
  <xs:attribute name="reason" type="xs:string" />
  <xs:anyAttribute namespace="##other" processContents="lax" />
</xs:complexType>

```

### 7.2.4.2.3 Bitrate Characteristics

The network provides information to the DASH client about the bitrate characteristics of the network. This may for example be used in case some QoS is provided on the access link between the DANE and the DASH client or if the data is cached in a local device. This message may apply in the case the MBMS client is located in a different device from the DASH client, and communicate with the DASH client via a network, e.g. WiFi.

The message expresses the bitrate characteristics of the network at the current time. The DASH client should assume that this status persists until it is informed about a change of the status.

The semantics are provided in Table 7.2.4.3, the XML schema is provided below.

**Table 7.2.4.3 Bitrate Characteristics**

Name	Type	Cardinality	Description
<b>Bitrate</b>			
<b>Characteristic</b>		1... N	Provides bitrate characteristics
@gbr	<b>unsignedInt</b>	M	Specifies a guaranteed bitrate in bit/s. Provides the guarantee for the bitrate in a sense that the download time of a resource of size S bytes and from receiving the first byte to receiving the last byte is at most $S \cdot 8$ divided by the value of the attribute. This guarantee is provided with the value of the below percentage of certainty and holds for a request from the DASH client w/o any other concurrent HTTP requests.
@percentage	<b>unsignedInt</b>	OD default=100	specifies the certainty of the above guarantee expressed as a percentage from 0 to 100.

```

<!-- Resource Status -->
<xs:complexType name="BitrateType">
  <xs:sequence>
    <xs:element name="Characteristic" type="CharacteristicType" maxOccurs="unbounded"/>
    <xs:any namespace="##other" processContents="lax" minOccurs="0" maxOccurs="unbounded"/>
  </xs:sequence>
  <xs:anyAttribute namespace="##other" processContents="lax"/>
</xs:complexType>

<xs:complexType name="CharacteristicType">
  <xs:sequence>
    <xs:any namespace="##other" processContents="lax" minOccurs="0" maxOccurs="unbounded"/>
  </xs:sequence>
  <xs:attribute name="gbr" type="xs:unsignedInt" use="required"/>
  <xs:attribute name="percentage" type="xs:unsignedInt" default="100"/>
  <xs:anyAttribute namespace="##other" processContents="lax"/>
</xs:complexType>

```

#### 7.2.4.2.4 Availability Time Offset

Offsets affect the availability of segments of a particular Representation or particular networks. This is typically the result of the different paths and processing operations that the Segments of the Representation that is sent over MBMS undergo compared to the segments of Representations that are delivered over the unicast channel. Also unicast channels may see different delays. The intention is to adjust the segment availability start times to the new path and bring the DASH client to a correct operation point. This availability offset may be positive or negative and should be taken into account by the DASH client to avoid buffer underflows when switching between Representations and also to avoid 404 messages as much as possible.

The message expresses the status of the network at the current time. The DASH client should assume that this status persists until it is informed about a change of the status. The DANE should avoid significantly changing the parameters for one resource as it may result in scheduling/playback problems in the DASH client.

The semantics are provided in Table 7.2.4.4.

Table 7.2.4.4 Availability Time Offset

Name	Type	Cardinality	Description
AvailabilityTimeOffset	Integer	0 ... 1	Provides the offset in milliseconds that needs to be applied to the segment availability start time of the resources accessible through the indicated location or representation identifier.

### 7.2.4.3 Message Channel

#### 7.2.4.3.1 General

The following scenarios are considered for exchange between the DANE and the DASH client.

- **Client assistance:** A scenario for which the message is provided as auxiliary information for the client, but the service will be continued even if the client ignores the message. This is for example the case when the service provider provides information on the availability of additional networks that may be accessed by the DASH client to request the content. For example protocols and methods, see clause 7.2.4.3.2.
- **Client Enforcement:** A scenario for which the client requires to act, the network provides suitable alternatives for future requests. The DANE cannot or is not willing to respond to the request with a valid resource, but provides suitable alternatives. For example protocols and methods, see clause 7.2.4.3.3.
- **Error Cases:** A scenario for which the client is informed that the request is not valid and the network provides the reason and possible resolutions for the problem. The DANE cannot respond to the request with a valid resource. For example protocols and methods, see clause 7.2.4.3.4.

#### 7.2.4.3.2 Assistance

For assistance, a suitable method is the use of a dedicated HTTP header field that indicates a notification that the DANE has SAMMO messages to send to the DASH client. Upon receiving an HTTP entity that contains the SAMMO header field in its entity head, the DASH client issues a GET request to the indicated element to receive the SAMMO message.

We propose the following ABNF syntax for the header field:

```
SAMMO-header-field = "X-3GPP-SAMMO" ":" element-address
element-address = absolute-URI
```

The field `absolute-URI` takes the syntax from RFC3986 [24]. The SAMMO header field provides the URI to the SAMMO message that is to be fetched by the DASH client using an HTTP GET method.

#### 7.2.4.3.3 Enforcement

For enforcement, a suitable method is the use of a 300 Multiple Choices response with the following details:

- the response include an entity containing a SAMMO message as defined in clause 7.2.4.2. The entity format is specified by the media type given in the Content-Type.
- The response should not include the Location field to avoid the use of the Location field value by the user agent for automatic redirection.

This response is cacheable unless indicated otherwise.

#### 7.2.4.3.4 Error Case

For error cases, a suitable method is the use of a suitable 4xx error code. The response may include a SAMMO message from which the client can deduce the reason for the error code and potential resolution of the problem.

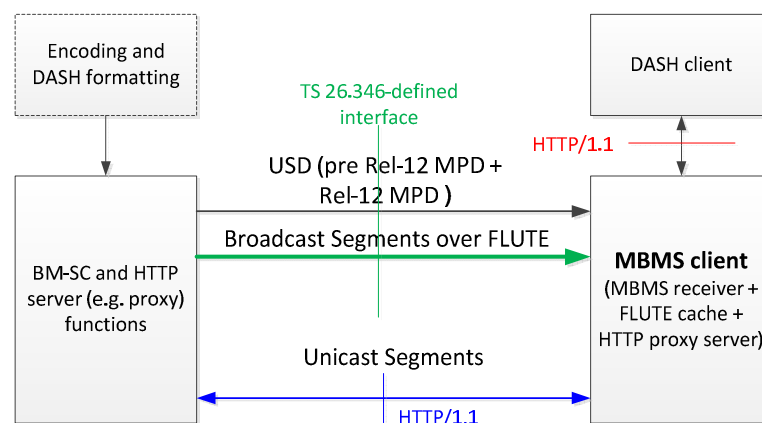
## 7.2.5 Proxy-Based Interaction Between MBMS Receiver and DASH Client

### 7.2.5.1 Introduction

This clause describes a means for the use of HTTP 2xx Successful and 300 Redirection status codes as described in RFC 7231 [22], to enable the MBMS client, acting as an HTTP proxy, to mediate Segment requests from the DASH client. The HTTP proxy is also referred as DASH-aware Network Element (DANE). The assumed operational context, in accordance to the description in sub-clause 7.6 of TS 26.346 [6], is as follows:

- A DASH-over-MBMS service with unicast fallback is provisioned;
- The DASH client has obtained an MPD, from the MBMS client (received over FLUTE as a Media Presentation Description fragment), which declares the entirety of available Representations of the Media Presentations of the DASH-over-MBMS service, and whereby one or more Representations are delivered over the MBMS bearer(s) and one or more Representations are delivered over the unicast bearer;
- The USD contains information that enables the MBMS client to determine the transport mode (broadcast and/or unicast) of any given Segment request from the DASH client, and the presence of identical or alternative version(s) of the requested content by transport mode.

In addition, it is assumed that the UE implements the HTTP/1.1 interface between the DASH client and the MBMS client, the latter entity containing a HTTP proxy/cache function. Such UE architecture is shown below in Figure 15, which is a duplicate of Figure 4.2.1-1 in TR 26.848 [23].



**Figure 15: UE architecture employing HTTP/1.1 interface between MBMS client and DASH client**

Different HTTP responses may be provided by the MBMS client to the DASH client's request for Segments, in accordance to specific applicable conditions such as operator policy, whether the UE is currently located inside or outside of MBMS coverage area at the time of the content request, the available Representation(s) by transport mode, and whether those Representations are identical or alternative version of the requested Representation. The sub-clauses below describe the specific HTTP response in accordance to different operational scenarios.

In the simplest way, the DASH client requests data that is identically distributed through broadcast and unicast. In this case MBMS client can proxy the HTTP request on behalf of the DASH client in returning the content directly from local cache, via the 200 OK, see clause 7.2.5.2. This does not require any extensions to HTTP.

However, this case is not typical as the unicast typically offers different choices, either for the same Adaptation Set (as an alternative to the Representation), or also other Adaptation Sets that are only provided through unicast for efficiency reasons. In this case new signalling messages are necessary (see clause 7.2.4.2) and a channel to communicate (see clause 7.2.4.3) the messages is necessary. For the usage of the messages refer to clause 7.2.4.3.

## 7.2.5.2 Usage Guidelines Example

### 7.2.5.2.1 Assumptions

Assume that the MBMS receiver acts as a DANE that can create SAMMO messages for the DASH client. The USD contains the **r12:appService** element as part of the USD that contains the following information:

```
<r12:appService appServiceDescriptionURI="http://www.example.com/MPD2.mpd"
  mimeType="application/dash+xml;profiles=urn:3GPP:PSS:profile:DASH10">
  <r12:identicalContent>
    <r12:basePattern>http://example.com/bc/v1024</r12:basePattern>
    <r12:basePattern>http://example.com/uc/v1024</r12:basePattern>
  </r12:identicalContent>
  <r12:identicalContent>
    <r12:basePattern>http://example.com/bc/a128</r12:basePattern>
    <r12:basePattern>http://example.com/uc/a128</r12:basePattern>
  </r12:identicalContent>
  <r12:alternativeContent>
    <r12:basePattern>http://example.com/bc/a128</r12:basePattern>
    <r12:basePattern>http://example.com/uc/a128</r12:basePattern>
    <r12:basePattern>http://example.com/uc/a64</r12:basePattern>
  </r12:alternativeContent>
</r12:appService>
```

In addition, the MBMS receiver has access to **r12:broadcastAppService** and **r12:unicastAppService** element as follows:

```
<r12:broadcastAppService>
  <r12:basePattern>http://example.com/bc</r12:basePattern>
</r12:broadcastAppService>
<r12:unicastAppService>
  <r12:basePattern>http://example.com/uc</r12:basePattern>
</r12:unicastAppService>
```

The MPD referenced as <http://www.example.com/MPD2.mpd> contains the following information:

```
<MPD
  xmlns:xsi="http://www.w3.org/2001/XMLSchema-instance"
  xmlns="urn:mpeg:dash:schema:mpd:2011"
  type="dynamic" minimumUpdatePeriod="PT10S"
  timeShiftBufferDepth="PT600S"
  minBufferTime="PT2S"
  profiles="urn:3GPP:PSS:profile:DASH10"
  publishTime="2014-10-17T17:17:05Z"
  availabilityStartTime="2014-10-17T17:17:05Z">
  <Period id="1" start="PT0S">
    <BaseURL> http://example.com/uc</BaseURL>
    <SegmentTemplate media=".$RepresentationID$/$Number$.m4s" initialization="$RepresentationID$-
init.mp4"/>
    <!-- Video -->
    <AdaptationSet mimeType="video/mp4" codecs="hev1.A1.80.L93.B0" segmentAlignment="true"
startWithSAP="1">
      <SegmentTemplate timescale="25" duration="25"/>
      <Representation id="v2048" bandwidth="2048000">
      <Representation id="v1024" bandwidth="1024000">
        <BaseURL> http://example.com/bc</BaseURL>
      </Representation>
      <Representation id="v512" bandwidth="512000">
      <Representation id="v128" bandwidth="128000">
    </AdaptationSet>
    <!-- Audio -->
    <AdaptationSet mimeType="audio/mp4" codecs="mp4a.40.2" segmentAlignment="true" startWithSAP="1"
bitstreamSwitching="true">
      <SegmentTemplate timescale="20" duration="20"/>
      <Representation id="a128" bandwidth="128000">
        <BaseURL> http://example.com/bc</BaseURL>
      </Representation>
      <Representation id="a64" bandwidth="64000">
    </AdaptationSet>
  </Period>
</MPD>
```

In summary, this documentation provides the following information:

- Video Representation with bitrate 1024 kbit/s is distributed over unicast and broadcast.
- Audio Representation with bitrate 128 kbit/s is distributed over unicast and broadcast.
- All broadcast Representations are also available over unicast.
- Audio Representations are bitstream switchable.
- In addition, for unicast three more video Representations and one more audio Representation is available.

It is further assumed that the MBMS client is passing along the MPD to the DASH client and has no information on the information in the MPD. It will purely act based on the information in the USD.

In addition, it is assumed that the UE may be dynamically moving into and out of MBMS coverage.

#### 7.2.5.2.2 Same Resource

Here, it is assumed that the DASH client requests Segments whose Representation is known by the MBMS client to be delivered over broadcast, and the UE is located inside MBMS coverage, e.g. <http://example.com/bc/v1024/340.m4s>.

Furthermore, it is assumed that each Segment request occurs after that Segment has been received over FLUTE and is already available in the local cache. In such event, the MBMS client will proxy the HTTP request on behalf of the DASH client in returning the content directly from local cache, via the 200 OK or 206 Partial Content response, corresponding to a nominal GET or partial GET request, respectively.

#### 7.2.5.2.3 Alternative Content

Under the same conditions as in clause 7.2.5.2.2, i.e. the UE is in MBMS coverage, if the DASH client requests a unicast Representation, e.g. <http://example.com/uc/a64/340.m4s>, but as the DASH client is located within broadcast coverage, and because the <http://example.com/bc/a128/340.m4s> is offered as alternative content, the MBMS client may also respond with this resource. However, to avoid potential caching issues, preferably a 303 response may be issued with Content-Location set to <http://example.com/bc/a128/340.m4s>.

Along with this request the MBMS client may provide an extension header X-3GPP-SAMMO pointing to a document that contains the following information

```
<SAMMO>
  <Status baseURL="http://example.com/bc">
    <ResourceStatus status="cached"/>
  </Status>
  <Status baseURL="http://example.com/uc">
    <ResourceStatus status="available"/>
  </Status>
</SAMMO>
```

If the DASH client continues to request unicast-delivered resources, and the MBMS client wishes to force the DASH client to only access broadcast-delivered resources, it will provide a 300 response with the following message body.

```
<SAMMO>
  <Status baseURL="http://example.com/bc">
    <ResourceStatus status="cached"/>
  </Status>
  <Status baseURL="http://example.com/uc">
    <ResourceStatus status="unavailable"/>
  </Status>
</SAMMO>
```

The 300 message does not contain the 'Location' response header which, if used, may cause the DASH client to automatically (transparently) follow the URL in that header in performing the subsequent retrieval request

#### 7.2.5.2.4 Outside MBMS coverage

Here it is assumed that the UE has just moved outside MBMS coverage, such that broadcast reception becomes unavailable. If the DASH client requests for example <http://example.com/bc/v1024/380.m4s>, the MBMS client may

respond with a 303 response along with the Content-Location set to <http://example.com/uc/v1024/380.m4s>. Alternatively, and especially if the DASH client continues to request Segments available only over broadcast, the MBMS receiver may respond with a 300 response with the following message body.

```
<SAMMO>
  <Status baseURL="http://example.com/bc">
    <ResourceStatus status="unavailable"/>
  </Status>
  <Status baseURL="http://example.com/uc">
    <ResourceStatus status="available"/>
  </Status>
</SAMMO>
```

#### 7.2.5.2.5 Persistence of the 300 Redirection

In typical HTTP operation, the user agent is not expected to retain the metadata such as URI reference(s) contained in the 300 response for resource requests beyond the corresponding redirected request. In other words, the redirected request based on the URI reference(s) returned in the 300 redirection is only applicable to the resource presently sought. In the case that the **ResourceStatus** message is sent in the 300 response with `@status = "unavailable"`, the DASH client is expected to understand that it should no longer continue to request the originally requested resource. The DASH client should therefore continue to use one of the alternative resources for future Segment requests unless/until another 300 redirection is received (which may include the appropriate SAMMO message that causes the DASH client to make a change in the requested Representation).

## 7.3 MBMS streaming delivery method

The MBMS Streaming receiver application may be started upon user interaction. In the case of immediate play-out upon reception, the user would be fully aware of the MBMS Streaming reception. The MBMS Streaming User Service is likely a fully integrated application (such as PSS).

The "MBMS User Service Transmitters" sends in case of the MBMS Streaming User service a number of continuous RTP-streams via the MBMS Bearer Service to the "MBMS User Service Receivers". The number of streams per MBMS User Service depends on the multimedia components of the Service.

Output of the MBMS User Service Receiver is in case of the MBMS Streaming User Service a number of continuous media streams (e.g. audio and video stream). The required codecs for reception of MBMS Streaming User Service are provided during the MBMS Service Discovery phase.

The "MBMS User Service Transmitter" starts and stops sending the RTP-streams according to the "Transmission Controller". Users do not have a direct influence on the transmission duration or on the quality of the transmitted media.

---

## 8 Codecs and formats

The H.264 (AVC) decoder in an MBMS client should infer missing macroblocks in a coded picture. When `gaps_in_frame_num_value_allowed_flag` is equal to 0 in the active sequence parameter set and the value of `frame_num` syntax element in the current picture is invalid according to clause 7.4.3 of ITU-T Recommendation H.264 [17], the H.264 (AVC) decoder in an MBMS client should infer an unintentional reference picture loss. When `gaps_in_frame_num_value_allowed_flag` is equal to 1 in the active sequence parameter set and any value of `frame_num` pertaining to "non-existing" pictures is referred to in the inter prediction process, is referred to in the reordering commands for reference picture lists for short-term pictures (clause 8.2.4.3.1 of ITU-T Recommendation H.264 [17]), or is referred to in the assignment process of a `LongTermFrameIdx` to a short-term picture (clause 8.2.5.4.3 of ITU-T Recommendation H.264 [17]), the H.264 (AVC) decoder in an MBMS client should infer an unintentional reference picture loss. The H.264 (AVC) decoder in an MBMS client should infer a syntax violation, when decoding causes any syntax or semantics violation other than specified above.

When the H.264 (AVC) decoder in an MBMS client infers missing macroblocks in a non-reference picture, it should continue decoding no later than from the next access unit in decoding order. When the H.264 (AVC) decoder in an MBMS client infers an unintentional reference picture loss or missing macroblocks in a reference picture, it may or may not continue decoding "immediately", i.e. from the NAL unit in which the loss is inferred. If the H.264 (AVC) decoder in an MBMS client continues decoding "immediately", it should be aware that such a stream may contain references to macroblocks or pictures that are not available in the decoded picture buffer. The H.264 (AVC) decoder in an MBMS client should continue decoding after an unintentional reference picture loss, missing macroblocks in a reference picture



or a syntax violation no later than it receives the next IDR access unit or the next recovery point SEI message, whichever is earlier in decoding order.

NOTE: When the H.264 (AVC) decoder in an MBMS client continues decoding "immediately" after an inferred reference picture loss or missing macroblocks in a reference picture, it does not have to parse recovery point SEI messages to comply with the paragraph above.

### Encoding and Packetization Recommendations

The following recommendations are given to MBMS encoders and packetizers to optimize the tradeoff between loss rates and throughput for MBMS video services:

- The encoder/packetizer **should** choose a suitable IP packet size for the loss regime and other network characteristics.
- When H.264/AVC is in use and FEC is in use, the encoder **may** produce NAL units larger than the suitable IP/RTP packet size.
- When H.264/AVC is in use and in any case when larger NAL units are produced by the encoder, the packetizer **should** use NAL Unit fragmentation as specified in RFC 3984 [18], section 5.8, to adapt the RTP packet size to the network, and not produce large RTP packets (which would imply either IP fragmentation or IP packets which use several transmission units, both of which are undesirable).

NOTE: When H.263 is in use, follow-on packets **should** be used for similar purposes as fragmentation units.

---

## Annex A: MBMS Forward Error Correction performance

This annex provides details of the performance of the MBMS Forward Error Correction code which can be used in dimensioning MBMS services.

---

### A.1 Theoretical performance

The theoretical performance of the MBMS FEC code depends on the amount of data received by the terminal. If less data has been received than the size of the file or block to which FEC protection has been applied then recovery of the original data is obviously impossible. If an amount of data has been received which is not less than the size of the file or block then recovery may be possible.

As a general rule, if at least one source packet has been lost and if an amount of data has been received which is 1 % greater than the source size, then the probability of recovery is around 99.9 % or greater. If an amount of data has been received which is 2 % greater than the source size then the probability of recovery is 99.9999 % or greater.

In practice, the recovery probabilities are often higher than these figures, in particular when the number of FEC encoding symbols in the block is large.

---

### A.2 Simulation results

This clause provides results of simulations which were carried out during the development of 3GPP TS 26.346 [5]. These results may be used as guidelines for the provisioning of MBMS services. In general, provisioning should be based on first determining the available resources for the MBMS service and the coverage required. The service should then be dimensioned to provide acceptable quality of service at the edge of the coverage area.

It should be noted that as discussed in clause 6.1.4, the IP packet loss rate may be quite sensitive to the chosen SDU size. Therefore care should be taken when using the figures presented here with SDU sizes, or other configuration parameters, which differ significantly from those used for the simulations.

## A.2.1 Simulation conditions and assumptions (UTRAN)

<b>UTRAN Download</b>		
Bearer rates		64 kbit/s, 128 kbit/s, 256 kbit/s
RLC PDU size		640 bytes, 1 280 bytes, 1 280 bytes respectively
RLC BLER		1%, 5%, 10%, 15%, 20%, 30%
RLC block loss pattern		Independent random loss
Number of trials		At least 10,000 for files $\leq$ 512 KB, 3,000 for 3 072 KB
File sizes		50 KB, 512 KB, 3 072 KB
FLUTE payload size		456 bytes
ROHC		No
IPv4/UDP header		28 bytes
FLUTE header		16 bytes
FEC overhead		Varied in steps of X packets, where $X = \text{ceil}(0.005N)$ and N is the number of packets containing source data
<b>UTRAN Streaming</b>		
Bearer rates		64 kbit/s, 128 kbit/s and 256 kbit/s
RLC PDU size		640 bytes (for 64 kbit/s bearer) 1280 bytes (for 128 kbit/s bearer) 1280 bytes (for 256 kbit/s bearer)
RLC BLER		1 %, 5 %, 10 %, 15 %, 20 %, 30 %
RLC block loss pattern		Independent random loss
Simulation duration		24 hours
Media rates		Varied by steps of 1 % of bearer rate, assuming only a single media stream (see note 1)
FEC overhead		Varied to sum FEC and Media to equal bearer rate
Source packet RTP payload size		64 kbit/s: 456 bytes 128 kbit/s: 456 bytes 256 kbit/s: 768 bytes
Repair packet RTP payload size		Minimum value supported by the FEC code which is not less than 470 (for 64 kbit/s and 128 kbit/s) and 782 (for 256 kbit/s) - (see note 2)
Protection period		5 s, 20 s
ROHC		No
IPv4/UDP/RTP header		40
NOTE 1: In practice, multiple media streams may be carried within a single MBMS bearer. However, only a single media stream is considered for FEC simulation purposes for simplicity.		
NOTE 2: The last repair packet of a block may be shorter if supported by the FEC code in order to fit within the protection period.		

## A.2.2 Simulation conditions and assumptions (GERAN)

<b>GERAN Download</b>		
	Bearer rates	28.8 kbit/s, 59.2 kbit/s, 118.4 kbit/s
	RLC PDU size	36 bytes, 74 bytes, 74 bytes respectively
	RLC BLER	for 28.8 kbit/s 0.1 % for 59.2kbit/s : 0.5 % for 118 kbit/s: 1 %, 10 %
	RLC block loss pattern	Independent random loss
	Number of trials	At least 10,000 for files $\leq$ 512 KB, 3,000 for 3 072 KB
	File sizes	50 KB, 512 KB, 3 072 KB
	FLUTE payload size	456 bytes, (for 10 % BLER at 118.4 kbps also simulate a case with 146 bytes payload)
	ROHC	No
	SNDCP/LLC/IPv4/UDP header	38 bytes
	FLUTE header	16 bytes
	FEC overhead	Varied in steps of X packets, where $X = \text{ceil}(0.005N)$ and N is the number of packets containing source data
<b>GERAN Streaming</b>		
	Bearer rates	28.8 kbit/s, 59.2 kbit/s and 118.2 kbit/s
	RLC PDU size	36 bytes, 74 bytes, 74 bytes, respectively
	RLC BLER	for 28.8 kbit/s 0.1 % for 59.2kbit/s : 0.5 % for 118 kbit/s: 1 %, 10 %
	RLC block loss pattern	Independent random loss
	Simulation duration	24 hours
	Media rates	Varied by steps of 1 % of bearer rate, assuming only a single media stream (see note 1)
	FEC overhead	Varied to sum FEC and Media to equal bearer rate
	Source packet RTP payload size	456 bytes (for 10 % BLER at 118.4 kbps also simulate a case with 146 bytes payload)
	Repair packet RTP payload size	Minimum value supported by the FEC code which is not less than 470 bytes (for 10 % BLER at 118.4 kbps also simulate a case with 160 bytes payload) - (see note 2)
	Protection period	5 s, 20 s
	ROHC	No
	SNDCP/LLC/IPv4/UDP/RTP header	50
NOTE 1:	In practice, multiple media streams may be carried within a single MBMS bearer. However, only a single media stream is considered for FEC simulation purposes for simplicity.	
NOTE 2:	The last repair packet of a block may be shorter if supported by the FEC code in order to fit within the protection period.	

### A.2.3 Simulation results: UTRAN download

**Table A.1: FEC Overhead required for 99 % probability of recovery at specific BLER points 64 kbit/s**

Error rates	Power required (G=-3dB - note 1)	Power required (G=-6dB - note 2)	File size	Ideal (note 3)	MBMS FEC
Low (1 % BLER)	2.0 %	4.5 %	Small (50 KB)	7.0 %	8.0 %
			Medium (512 KB)	3.3 %	3.6 %
			Large (3 072 KB)	2.4 %	2.6 %
Medium (5 % BLER)	1.8 %	3.9 %	Small (50 KB)	21.8 %	22 %
			Medium (512 KB)	13.0 %	13.4 %
			Large (3 072 KB)	11.0 %	11.2 %
High (10 % BLER)	1.7 %	3.7 %	Small (50 KB)	39.0 %	39.0 %
			Medium (512 KB)	25.8 %	26.0 %
			Large (3 072 KB)	22.6 %	22.8 %
15 % BLER	n/a	n/a	Small (50 KB)	56.0 %	56.0 %
			Medium (512 KB)	40.5 %	41.0 %
			Large (3 072 KB)	36.0 %	37.0 %
20 % BLER	n/a	n/a	Small (50 KB)	76.0 %	76.0 %
			Medium (512 KB)	57.0 %	57.0 %
			Large (3 072 KB)	52.0 %	52.0 %
30 % BLER	n/a	n/a	Small (50 KB)	130.0 %	130.0 %
			Medium (512 KB)	100.0 %	100.0 %
			Large (3 072 KB)	92.0 %	92.0 %

NOTE 1: This corresponds to ~90 % of users assuming uniform distribution of users.  
 NOTE 2: This corresponds to ~99 % of users assuming uniform distribution of users.  
 NOTE 3: This column provides the best possible performance which could be achieved with a theoretical "ideal" forward error correction code.

**Table A.2: FEC Overhead required for 99 % probability of recovery at specific BLER points 128 kbit/s and 256 kbit/s**

Error rates	Power required (G=-3dB - note 1) 128 kbit/s 256 kbit/s	Power required (G=-6dB - note 2) 128 kbit/s 256 kbit/s	File size	Ideal (note 3)	MBMS FEC
Low (1 % BLER)	4.0 % 7.9 %	8.9 % 19.3 %	Small (50 KB)	7.5 %	8.0 %
			Medium (512 KB)	3.1 %	3.4 %
			Large (3 072 KB)	2.1 %	2.2 %
Medium (5 % BLER)	3.7 % 7.1 %	7.8 % 16.0 %	Small (50 KB)	20.0 %	21.0 %
			Medium (512 KB)	11.2 %	11.4 %
			Large (3 072 KB)	8.8 %	9.0 %
High (10 % BLER)	3.4 % 6.8 %	7.2 % 14.8 %	Small (50 KB)	35.0 %	35.0 %
			Medium (512 KB)	21.5 %	21.5 %
			Large (3 072 KB)	17.8 %	18.1 %
15 % BLER	n/a	n/a	Small (50 KB)	50.0 %	50.0 %
			Medium (512 KB)	32.0 %	32.1 %
			Large (3 072 KB)	28.0 %	28.1 %
20 % BLER	n/a	n/a	Small (50 KB)	66.0 %	66.0 %
			Medium (512 KB)	44.6 %	45.0 %
			Large (3 072 KB)	38.0 %	38.2 %
30 % BLER	n/a	n/a	Small (50 KB)	106.0 %	106.0 %
			Medium (512 KB)	72.0 %	72.0 %
			Large (3 072 KB)	66.8 %	67.0 %

NOTE 1: This corresponds to ~90 % of users assuming uniform distribution of users.  
 NOTE 2: This corresponds to ~99 % of users assuming uniform distribution of users.  
 NOTE 3: This column provides the best possible performance which could be achieved with a theoretical "ideal" forward error correction code.

## A.2.4 Simulation results UTRAN streaming

**Table A.3: Maximum supported Media Rate (kbit/s)  
for Mean Time Between FEC Block Loss of 1 hour**

Error rates	Bearer rate	Ideal (see note)	MBMS FEC
Low (1 % BLER)	Low (64 kbit/s)	5 s: 56.8	5 s: 55.8
		20 s: 60.6	20 s: 60.4
	Medium (128 kbit/s)	5 s: 116.3	5 s: 115.5
		20s: 122.6	20 s: 122.4
Medium (5 % BLER)	Low (64 kbit/s)	5 s: 237.4	5 s: 236.2
		20 s: 246.4	20 s: 245.7
	High (256 kbit/s)	5 s: 47.4	5 s: 46.6
		20 s: 54.2	20 s: 53.6
High (10 % BLER)	Medium (128 kbit/s)	5 s: 102.2	5 s: 100.8
		20 s: 112.5	20 s: 111.8
	High (256 kbit/s)	5 s: 228.0	5 s: 227.0
		20 s: 224.5	20 s: 224.0
Low (64 kbit/s)	Medium (128 kbit/s)	5 s: 39.5	5 s: 38.5
		20 s: 47.5	20 s: 47.2
	High (256 kbit/s)	5 s: 88.5	5 s: 87.5
		20 s: 101.8	20 s: 101.2
	High (256 kbit/s)	5 s: 182.0	5 s: 179.5
		20 s: 201.5	20 s: 200.5
NOTE: This column provides the best possible performance which could be achieved with a theoretical "ideal" forward error correction code.			

## A.2.5 Simulation results GERAN download

**Table A.4: FEC Overhead required for 99 % probability  
of recovery at specific GERAN operation points**

Operation Points	File size	Ideal (see note)	MBMS FEC
Low Bitrate (CS3) 0.1% BLER 28.8 kbit/s	Small (50 KB)	4.7 %	5.3 %
	Medium (512 KB)	2.4 %	2.7 %
	Large (3 072 KB)	1.8 %	2.1 %
Medium Bitrate (MCS-6) 0.5% BLER 59.2 kbit/s	Small (50 KB)	9.4 %	9.7 %
	Medium (512 KB)	5.6 %	5.9 %
	Large (3 072 KB)	4.6 %	4.7 %
High Bitrate (MCS-9) 1% BLER 118.4 kbit/s	Small (50 KB)	16.0 %	16.0 %
	Medium (512 KB)	10.6 %	10.8 %
	Large (3 072 KB)	9.2 %	9.3 %
High Bitrate and High Error Rate (MCS-6) 10% BLER, 146 byte packet payload 118.4 kbit/s	Small (50 KB)	60 %	60 %
	Medium (512 KB)	51.5 %	51.5 %
	Large (3 072 KB)	49.2 %	52.0 %
NOTE: This column provides the best possible performance which could be achieved with a theoretical "ideal" forward error correction code.			

NOTE: 440 byte payloads, according to Raptor specification recommendations.

## A.2.6 Simulation results GERAN streaming

**Table A.5: Maximum supported Media Rate for Mean Time Between FEC Block Loss of 1 hour**

<b>Operation Points</b>	<b>Ideal (see note)</b>	<b>MBMS FEC</b>
Low Bitrate (CS3) (0.1 % BLER) 28.8 kbit/s	5 s: 24.9 kbit/s 20 s: 26.6 kbit/s	5 s: 24.4 kbit/s 20 s: 26.2 kbit/s
Medium Bitrate (MCS-6) (0.5 % BLER) 59.2 kbit/s	5 s: 51.1 kbit/s 20 s: 54.6 kbit/s	5 s: 50.4 kbit/s 20 s: 54.2 kbit/s
High Bitrate (MCS-9) (1 % BLER) 118.4 kbit/s	5 s: 99.5 kbit/s 20 s: 104.5 kbit/s	5 s: 98.2 kbit/s 20 s: 104.2 kbit/s
High Bitrate and High Error Rate (MCS-6) 10 % BLER, 146 byte packet payloads 118.4 kbit/s	5 s: 66.5 kbit/s 20 s: 72.5 kbit/s	5 s: 66.4 kbit/s 20 s: 72.3 kbit/s
NOTE: This column provides the best possible performance which could be achieved with a theoretical "ideal" forward error correction code.		

## Annex B: Change history

Change history							
Date	TSG #	TSG Doc.	CR	Rev	Subject/Comment	Old	New
2006-03	31				Presented at SA#31 Plenary for approval	2.0.0	6.0.0
2006-03					Correct 3GPP logo, make capitalization consistent	6.0.0	6.0.1
2006-09	33	SP-060593	0001	2	Correcting the Associated Delivery Procedure Example	6.0.1	6.1.0
2007-06	36				Version for Release 7	6.1.0	7.0.0
2008-12	42				Version for Release 8	7.0.0	8.0.0
2009-12	46				Version for Release 9	8.0.0	9.0.0
2011-03	51				Version for Release 10	9.0.0	10.0.0
2012-09	57				Version for Release 11	10.0.0	11.0.0
2012-12	58	SP-120761	0002	1	Addition to MBMS User Service Guidelines on Partial Content Delivery	11.0.0	11.1.0
2013-12	62	SP-130566	0003		Correction to Partial File Delivery from MBMS Receiver to DASH Client	11.1.0	11.2.0
2014-09	65				Version for Release 12	11.2.0	12.0.0
2014-12	66	SP-140732	0006	1	Guidelines on MBMS Client to DASH Client Communication	12.0.0	12.1.0
2014-12	66	SP-140732	0007	1	Proxy-based Interaction between MBMS Client and DASH Client	12.0.0	12.1.0
2015-03	67	SP-150091	0008	1	AvailabilityTimeOffset cardinality	12.1.0	12.2.0
2015-03	67	SP-150091	0009	1	MBMS Guidelines Release 12 update	12.1.0	12.2.0
2015-09	69	SP-150449	0014	3	Partial File Handling	12.2.0	13.0.0

Change history							
Date	Meeting	TDoc	CR	Rev	Cat	Subject/Comment	New version
2017-03	75					Version for Release 14	14.0.0



---

# History

<b>Document history</b>		
V14.0.0	April 2017	Publication