



**Cyber Security (CYBER);
Critical Security Controls for Effective Cyber Defence;
Part 1: The Critical Security Controls**

Reference

RTR/CYBER-0076rev

Keywords

cyber security, cyber-defence, information
assurance

ETSI

650 Route des Lucioles
F-06921 Sophia Antipolis Cedex - FRANCE

Tel.: +33 4 92 94 42 00 Fax: +33 4 93 65 47 16

Siret N° 348 623 562 00017 - APE 7112B
Association à but non lucratif enregistrée à la
Sous-Préfecture de Grasse (06) N° w061004871

Important notice

The present document can be downloaded from:

<http://www.etsi.org/standards-search>

The present document may be made available in electronic versions and/or in print. The content of any electronic and/or print versions of the present document shall not be modified without the prior written authorization of ETSI. In case of any existing or perceived difference in contents between such versions and/or in print, the prevailing version of an ETSI deliverable is the one made publicly available in PDF format at www.etsi.org/deliver.

Users of the present document should be aware that the document may be subject to revision or change of status.

Information on the current status of this and other ETSI documents is available at

<https://portal.etsi.org/TB/ETSIDeliverableStatus.aspx>

If you find errors in the present document, please send your comment to one of the following services:

<https://portal.etsi.org/People/CommitteeSupportStaff.aspx>

If you find a security vulnerability in the present document, please report it through our
Coordinated Vulnerability Disclosure Program:

<https://www.etsi.org/standards/coordinated-vulnerability-disclosure>

Notice of disclaimer & limitation of liability

The information provided in the present deliverable is directed solely to professionals who have the appropriate degree of experience to understand and interpret its content in accordance with generally accepted engineering or other professional standard and applicable regulations.

No recommendation as to products and services or vendors is made or should be implied.

No representation or warranty is made that this deliverable is technically accurate or sufficient or conforms to any law and/or governmental rule and/or regulation and further, no representation or warranty is made of merchantability or fitness for any particular purpose or against infringement of intellectual property rights.

In no event shall ETSI be held liable for loss of profits or any other incidental or consequential damages.

Any software contained in this deliverable is provided "AS IS" with no warranties, express or implied, including but not limited to, the warranties of merchantability, fitness for a particular purpose and non-infringement of intellectual property rights and ETSI shall not be held liable in any event for any damages whatsoever (including, without limitation, damages for loss of profits, business interruption, loss of information, or any other pecuniary loss) arising out of or related to the use of or inability to use the software.

Copyright Notification

No part may be reproduced or utilized in any form or by any means, electronic or mechanical, including photocopying and microfilm except as authorized by written permission of ETSI.

The content of the PDF version shall not be modified without the written authorization of ETSI.

The copyright and the foregoing restriction extend to reproduction in all media.

© ETSI 2022.
All rights reserved.

Contents

Intellectual Property Rights	4
Foreword.....	4
Modal verbs terminology.....	4
Executive summary	5
Introduction	5
1 Scope	8
2 References	8
2.1 Normative references	8
2.2 Informative references.....	8
3 Definition of terms, symbols and abbreviations.....	9
3.1 Terms.....	9
3.2 Symbols.....	12
3.3 Abbreviations	12
4 Critical Security Controls.....	13
4.0 Structure of the Critical Security Controls	13
4.1 Control 1: Inventory and Control of Enterprise Assets	14
4.2 Control 2: Inventory and Control of Software Assets	16
4.3 Control 3: Data Protection.....	18
4.4 Control 4: Secure Configuration of Enterprise Assets and Software	20
4.5 Control 5: Account Management	22
4.6 Control 6: Access Control Management	24
4.7 Control 7: Continuous Vulnerability Management	25
4.8 Control 8: Audit Log Management	27
4.9 Control 9: Email and Web Browser Protections.....	29
4.10 Control 10: Malware Defences.....	31
4.11 Control 11: Data Recovery	32
4.12 Control 12: Network Infrastructure Management	33
4.13 Control 13: Network Monitoring and Defence.....	34
4.14 Control 14: Security Awareness and Skills Training	36
4.15 Control 15: Service Provider Management	38
4.16 Control 16: Application Software Security	40
4.17 Control 17: Incidence Response Management	44
4.18 Control 18: Penetration Testing.....	47
Annex A: Version changes to the Controls	49
Annex B: Graphical depiction of the Controls.....	50
History	59

Intellectual Property Rights

Essential patents

IPRs essential or potentially essential to normative deliverables may have been declared to ETSI. The declarations pertaining to these essential IPRs, if any, are publicly available for **ETSI members and non-members**, and can be found in ETSI SR 000 314: *"Intellectual Property Rights (IPRs); Essential, or potentially Essential, IPRs notified to ETSI in respect of ETSI standards"*, which is available from the ETSI Secretariat. Latest updates are available on the ETSI Web server (<https://ipr.etsi.org/>).

Pursuant to the ETSI Directives including the ETSI IPR Policy, no investigation regarding the essentiality of IPRs, including IPR searches, has been carried out by ETSI. No guarantee can be given as to the existence of other IPRs not referenced in ETSI SR 000 314 (or the updates on the ETSI Web server) which are, or may be, or may become, essential to the present document.

Trademarks

The present document may include trademarks and/or tradenames which are asserted and/or registered by their owners. ETSI claims no ownership of these except for any which are indicated as being the property of ETSI, and conveys no right to use or reproduce any trademark and/or tradename. Mention of those trademarks in the present document does not constitute an endorsement by ETSI of products, services or organizations associated with those trademarks.

DECT™, **PLUGTESTS™**, **UMTS™** and the ETSI logo are trademarks of ETSI registered for the benefit of its Members. **3GPP™** and **LTE™** are trademarks of ETSI registered for the benefit of its Members and of the 3GPP Organizational Partners. **oneM2M™** logo is a trademark of ETSI registered for the benefit of its Members and of the oneM2M Partners. **GSM®** and the GSM logo are trademarks registered and owned by the GSM Association.

ATT&CK® is a trademark of The MITRE Corporation operating as a non-profit Federally Funded Research and Development Center (FFRDC) of the U.S. Department of Homeland Security. See <http://stixproject.github.io/legal/>. This information is given for the convenience of users of the present document and does not constitute an endorsement by ETSI of the product named. Equivalent products may be used if they can be shown to lead to the same results.

Foreword

This Technical Report (TR) has been produced by ETSI Technical Committee Cyber Security (CYBER).

The present document is part 1 of a multi-part deliverable covering the Critical Security Controls for Effective Cyber Defence, as identified below:

- Part 1: "The Critical Security Controls";
- Part 2: "Measurement and auditing";
- Part 3: "Service Sector Implementations";
- Part 4: "Facilitation Mechanisms";
- Part 5: "Privacy enhancement".

Modal verbs terminology

In the present document "**should**", "**should not**", "**may**", "**need not**", "**will**", "**will not**", "**can**" and "**cannot**" are to be interpreted as described in clause 3.2 of the [ETSI Drafting Rules](#) (Verbal forms for the expression of provisions).

"**must**" and "**must not**" are **NOT** allowed in ETSI deliverables except when used in direct citation.

Executive summary

The present document captures and describes the prioritized set of actions that collectively form a defence-in-depth set of best practices that mitigate the most common attacks against systems and networks. These actions are specified by ETSI in the present document, the Critical Security Controls (CSCs), which are developed and maintained by the Center for Internet Security (CIS) as an independent, expert, global non-profit organization.

The latest version of the Controls is found in the present document - Part 1. Other parts assist in the implementation. ETSI publishes derivative international versions. A global array of expert individuals and organizations contribute to provide ongoing development, support, adoption, and use of these Critical Security Controls [i.1]. The Controls reflect the combined knowledge of actual attacks and effective defences of experts from every part of the cyber security ecosystem and are implemented in a wide array of publicly available products worldwide, as well as mapped to the diverse sector and national controls found globally. This ensures that the Controls continually evolve to remain current as an effective and specific set of technical measures available to detect, prevent, respond, and mitigate damage from the most common to the most advanced of those attacks.

Introduction

The Controls started as a simple grassroots activity to identify the most common and important real-world cyber-attacks that affect enterprises every day, translate that knowledge and experience into positive, constructive action for defenders, and then share that information with a wider audience. The original goals were modest to help people and enterprises focus their attention and get started on the most important steps to defend themselves from the attacks that really mattered.

Under the leadership of the Center for Internet Security, the Controls initiative has matured into an international community of volunteer individuals and institutions that:

- Share insights into attacks and attackers, identify root causes, and translate that into classes of defensive action
- Create and share tools, working aids, and stories of adoption and problem-solving
- Map the Controls to regulatory and compliance frameworks in order to ensure alignment and bring collective priority and focus to them
- Identify common problems and barriers (such as initial assessment and implementation roadmaps), and solve them as a community

The Controls reflect the combined knowledge of experts from every part of the ecosystem (companies, governments, individuals), with every role (threat responders and analysts, technologists, information technology (IT) operators and defenders, vulnerability-finders, tool makers, solution providers, users, policy-makers, auditors, etc.), and across many sectors (government, power, defence, finance, transportation, academia, consulting, security, IT, etc.), who have banded together to create, adopt, and support the Controls.

Evolution of the Controls

The Controls have progressed on a multi-year path to bring more data, rigor, and transparency to the process of best practice recommendations consisting of both the specific Controls as well as ancillary material, especially benchmarks. All of these elements are essential to the maturation of a science to underlie cyber defence and all are necessary to allow the tailoring and "negotiation" of security actions applicable in specific cases, and as required through specific security frameworks, regulations, and similar oversight schemes.

In the earliest versions of the Controls, a standard list of publicly known attacks was used as a simple and informal test of the usefulness of specific recommendations. Starting in 2013, commercial Data Breach Investigations Reports (DBIRs) were used to map the results of their large-scale data analysis directly to the Controls, as a way to match their summaries of attacks into a standard program for defensive improvement.

A new Community Defense Model (CDM) [i.16] represents the latest data-driven approach. The CDM combines information from the most recent DBIRs, along with data from the U.S. Multi-State Information Sharing and Analysis Center® (MS-ISAC®), to identify the five most important types of attacks. The attacks are described using the MITRE Adversarial Tactics, Techniques, and Common Knowledge (ATT&CK®) Framework to create attack patterns (or specific combinations of Tactics and Techniques used in those attacks). This approach allows analysis of the value of individual defensive actions (i.e. Safeguards) against those attacks. Previous versions of the Controls used the term "sub-controls" rather than "safeguards". This approach also provides a consistent and explainable way to look at the security value of a given set of defensive actions across the attacker's life cycle, and provide a basis for strategies like defence-in-depth. It represents a major step towards identifying the security value of the Controls, or any subset. These activities ensure that the Security Best Practices (which include the Controls and Benchmarks) are a prescriptive, prioritized, highly focused set of actions that have a community support network to make them implementable, usable, scalable, and in alignment with all industry or government security requirements.

Version 8 of the Critical Security Controls

The new version began with "design principles" used to guide the process. While these have been fairly consistent since the earliest versions of the Controls, the approach over the last couple of versions became focused on the role the Controls play in overall enterprise security. The design principles include:

- Offense Informs Defence
 - Controls are selected, dropped, and prioritized based on data, and on specific knowledge of attacker behaviour and how to stop it
- Focus
 - Help defenders identify the most critical things they need to do to stop the most important attacks
 - Avoid being tempted to solve every security problem - avoid adding "good things to do" or "things one could do"
- Feasible
 - All individual recommendations (Safeguards) are specific and practical to implement
- Measurable [i.4]
 - All Controls, especially for Implementation Group 1, are measurable
 - Simplify or remove ambiguous language to avoid inconsistent interpretation
 - Some Safeguards can have a threshold
- Align
 - Create and demonstrate "peaceful co-existence" with other governance, regulatory, process management schemes, framework, and structures
 - Cooperate with and point to existing, independent standards and security recommendations where they exist, e.g. National Institute of Standards and Technology (NIST®), Cloud Security Alliance (CSA), Software Assurance Forum for Excellence in Code (SAFECode), MITRE ATT&CK®, Open Web Application Security Project® (OWASP®)

Since Version 7, significant changes in technology and the cybersecurity ecosystem have occurred. Movement to cloud-based computing, virtualization, mobility, outsourcing, Work-from-Home, and changing attacker tactics have been extensive. Physical devices, fixed boundaries, and discrete islands of security implementation are less important, and reflected in Version 8 through revised terminology and grouping of Safeguards. Ambiguity has been diminished using an extensive terminology clause.

Annex A contains the mapping between Version 7 (V3.1.1 of the present document) and Version 8 (the present document).

The Controls Ecosystem

Meaningful use of Controls, whether these Critical Security Controls or others, encompasses much more than focusing on a list of steps. There are many lists of ICT security controls. The ultimate value of these Controls is the ecosystem of individuals and enterprises who actually make security improvements through the sharing of ideas, tools, lessons, and collective action that are reflected in the various parts of the Critical Security Reports.

Historically, the Controls were ordered in sequence to focus enterprise cybersecurity activities, with a subset of the first six Controls referred to as "cyber hygiene". However, this proved to be too simplistic. Enterprises, especially small ones, could struggle with some of the early Safeguards and never implement additional Controls (for example, having a backup strategy to help recover from ransomware).

Beginning with Version 7.1, Controls Implementation Groups (IGs) were developed to tailor and prioritize implementation. The IGs are self-assessed categories for enterprises. Each IG identifies a subset of the Controls that the community has broadly assessed to be applicable for an enterprise with a similar risk profile and resources to strive to implement. These IGs represent a horizontal look across the Controls tailored to different types of enterprises. IG1 has effectively become "basic cyber hygiene" that include the foundational set of cyber defence Safeguards that every enterprise should apply to guard against the most common attacks. Each IG then builds upon the previous one: IG2 includes IG1, and IG3 includes all CIS Safeguards in IG1 and IG2.

1 Scope

The present document describes a specific set of technical measures available to detect, prevent, respond, and mitigate damage from the most common to the most advanced of cyber-attacks. The measures reflect the combined knowledge of actual attacks and effective defences.

The present document is technically equivalent and compatible with CIS Controls, Version 8.0 of the Center for Internet Cybersecurity [i.1].

2 References

2.1 Normative references

Normative references are not applicable in the present document.

2.2 Informative references

References are either specific (identified by date of publication and/or edition number or version number) or non-specific. For specific references, only the cited version applies. For non-specific references, the latest version of the referenced document (including any amendments) applies.

NOTE: While any hyperlinks included in this clause were valid at the time of publication, ETSI cannot guarantee their long term validity.

The following referenced documents are not necessary for the application of the present document but they assist the user with regard to a particular subject area.

[i.1] The Center for Internet Cybersecurity: "CIS Controls™". Version 8.0, 2021.

NOTE: Available at <https://www.cisecurity.org/critical-controls.cfm>.

[i.2] Void.

[i.3] IEEE 802.1X™ (2010): "Port Based Network Access Control".

[i.4] ETSI TR 103 305-2: "CYBER; Critical Security Controls for Effective Cyber Defence; Part 2: Measurement and auditing".

[i.5] NIST Special Publication 800-63: "Digital Identity Guidelines".

[i.6] NIST Special Publication 800-50: "Building an Information Technology Security Awareness and Training Program".

[i.7] ENISA: "The new users' guide: How to raise information security awareness".

NOTE: Available at https://www.enisa.europa.eu/publications/archive/copy_of_new-users-guide.

[i.8] EDUCAUSE: "Information Security Guide: Effective Practices and Solutions for Higher Education".

NOTE: Available at <https://www.educause.edu/focus-areas-and-initiatives/policy-and-security/cybersecurity-program/resources/information-security-guide>.

[i.9] SANS: "Security Awareness Reports & Resources".

NOTE: Available at <https://www.sans.org/security-awareness-training/reports>.

[i.10] ETSI TR 103 331: "CYBER; Structured threat information sharing".

[i.11] CREST: "Cyber Security Incident Response Guide".

NOTE: Available at <https://www.crest-approved.org/wp-content/uploads/2014/11/CSIR-Procurement-Guide.pdf>.

[i.12] Void.

[i.13] PCI Security Standards Council.

NOTE: Available at https://www.pcisecuritystandards.org/documents/Penetration-Testing-Guidance-v1_1.pdf.

[i.14] OWASP Penetration Testing Methodologies.

NOTE: Available at https://www.owasp.org/index.php/Penetration_testing_methodologies.

[i.15] CIS Controls v8 Change Log.

NOTE: Available at <https://www.cisecurity.org/white-papers/cis-controls-v8-change-log/>.

[i.16] Community Defense Model (CDM).

NOTE: Available at <https://www.cisecurity.org/white-papers/cis-community-defense-model/>.

[i.17] National Cyber Security Centre, Engagement and training.

NOTE: Available at <https://www.ncsc.gov.uk/collection/10-steps/engagement-and-training>.

3 Definition of terms, symbols and abbreviations

3.1 Terms

For the purposes of the present document, the following terms apply:

administrator accounts: dedicated accounts with escalated privileges and used for managing aspects of a computer, domain, or the whole enterprise information technology infrastructure

NOTE: Common administrator account subtypes include root accounts, local administrator and domain administrator accounts, and network or security appliance administrator accounts.

application: program, or group of programs, hosted on enterprise assets and designed for end-users - which are considered a software asset in the present document, and include web, database, cloud-based, and mobile applications

authentication system: system or mechanism used to identify a user through associating an incoming request with a set of identifying credentials

NOTE: The credentials provided are compared to those on a file in a database of the authorized user's information on a local operating system, user directory service, or within an authentication server.

EXAMPLE: Active directory, Multi-Factor Authentication (MFA), biometrics, and tokens.

authorization system: system or mechanism used to determine access levels or user/client privileges related to system resources including files, services, computer programs, data, and application features

NOTE: An authorization system grants or denies access to a resource based on the user's identity.

EXAMPLE: Active directory, access control lists, and role-based access control lists.

cloud environment: virtualized environment that provides convenient, on-demand network access to a shared pool of configurable resources such as network, computing, storage, applications, and services

NOTE: There are five essential characteristics to a cloud environment: on-demand self-service, broad network access, resource pooling, rapid elasticity, and measured service. Some services offered through cloud environments include Software as a Service (SaaS), Platform as a Service (PaaS), and Infrastructure as a Service (IaaS).

Critical Security Control (CSC): specified capabilities that reflect the combined knowledge of actual attacks and effective defences of experts

database: organized collection of data, generally stored and accessed electronically from a computer system

NOTE: Databases can reside remotely or on-site. Database Management Systems (DMSs) are used to administer databases, and are not considered part of a database for the present document.

end-user devices: Information Technology (IT) assets used among members of an enterprise during work, off-hours, or any other purpose

NOTE: End-user devices include mobile and portable devices such as laptops, smartphones and tablets, as well as desktops and workstations. For the purpose of the present document, end-user devices are a subset of enterprise assets.

enterprise assets: assets with the potential to store or process data

NOTE: For the purpose of the present document, enterprise assets include end-user devices, network devices, non-computing/Internet of Things (IoT) devices, and servers, in virtual, cloud-based, and physical environments.

externally-exposed enterprise assets: enterprise assets that are public facing and discoverable through domain name system reconnaissance and network scanning from the public internet outside of the enterprise's network

internal enterprise assets: non-public facing enterprise assets that can only be identified through network scans and reconnaissance from within an enterprise's network through authorized authenticated or unauthenticated access

library: pre-written code, classes, procedures, scripts, configuration data, and more, used to develop software programs and applications, and designed to assist both the programmer and the programming language compiler in building and executing software

mobile end-user devices: small, enterprise issued end-user devices with intrinsic wireless capability, such as smartphones and tablets

NOTE: Mobile end-user devices are a subset of portable end-user devices, including laptops, which can require external hardware for connectivity. For the purpose of the present document, mobile end-user devices are a subset of end-user devices.

network devices: electronic devices required for communication and interaction between devices on a computer network

NOTE: Network devices include wireless access points, firewalls, physical/virtual gateways, routers, and switches. These devices consist of physical hardware, as well as virtual and cloud-based devices. For the purpose of the present document, network devices are a subset of enterprise assets.

network infrastructure: all of the resources of a network that make network or internet connectivity, management, business operations, and communication possible

NOTE: It consists of hardware and software, systems and devices, and it enables computing and communication between users, services, applications, and processes. Network infrastructure can be cloud, physical, or virtual.

non-computing/Internet of Things (IoT) devices: devices embedded with sensors, software, and other technologies for the purpose of connecting, storing, and exchanging data with other devices and systems over the internet

NOTE: While these devices are not used for computational processes, they support an enterprise's ability to conduct business processes. For the purpose of the present document, non-computing/IoT devices are a subset of enterprise assets.

EXAMPLE: Printers, smart screens, physical security sensors, industrial control systems, and information technology sensors.

Operating System (OS): system software on enterprise assets that manages computer hardware and software resources, and provides common services for programs

NOTE: Operating systems are considered a software asset and can be single- and multi-tasking, single- and multi-user, distributed, templated, embedded, real-time, and library.

physical environment: physical hardware parts that make up a network, including cables and routers which is required for communication and interaction between devices on a network

portable end-user devices: transportable, end-user devices that have the capability to wirelessly connect to a network

NOTE: For the purpose of the present document, portable end-user devices can include laptops and mobile devices such as smartphones and tablets, all of which are a subset of enterprise assets.

remote devices: any enterprise asset capable of connecting to a network remotely, usually from a public internet

EXAMPLE: End-user devices, network devices, non-computing/Internet of Things (IoT) devices, and servers.

remote file systems: systems enabling an application that runs on an enterprise asset to access files stored on a different asset

NOTE: Remote file systems often make other resources, such as remote non-computing devices, accessible from an asset. The remote file access takes place using some form of local area network, wide area network, point-to-point link, or other communication mechanism. These file systems are often referred to as network file systems or distributed file systems.

removable media: any type of storage device that can be removed from a computer while the system is running and allows data to be moved from one system to another

EXAMPLE: Compact Discs (CDs), Digital Versatile Discs (DVDs) and Blu-ray discs, tape backups, as well as diskettes and Universal Serial Bus (USB) drives.

server: device or system that provides resources, data, services, or programs to other devices on either a local area network or wide area network

NOTE: Servers can provide resources and use them from another system at the same time.

EXAMPLE: Web servers, application servers, mail servers, and file servers.

service: software functionality or set of software functionalities, such as the retrieval of specified information or the execution of a set of operations

NOTE: Services provide a mechanism to enable access to one or more capabilities, where the access is provided using a prescribed interface and based on the identity of the requestor per the enterprise's usage policies.

service account: dedicated account with escalated privileges used for running applications and other processes

NOTE: Service accounts can also be created just to own data and configuration files. They are not intended to be used by people, except for performing administrative operations.

social engineering: broad range of malicious activities accomplished through human interactions on various platforms, such as email or phone, and which relies on psychological manipulation to trick users into making security mistakes or giving away sensitive information

software assets: programs and other operating information used within an enterprise asset

NOTE 1: Software assets include operating systems and applications.

NOTE 2: Also referred to as software in the present document.

user account: identity created for a person in a computer or computing system or "interactive" user accounts with limited privileges used for general tasks such as reading email and surfing the web

NOTE: User accounts with escalated privileges are covered under administrator accounts.

virtual environment: environment simulating hardware to allow a software environment to run without the need to use a lot of actual hardware which are used to make a small number of resources act as many with plenty of processing, memory, storage, and network capacity, and allows cloud computing to work

3.2 Symbols

Void.

3.3 Abbreviations

For the purposes of the present document, the following abbreviations apply:

AAA	Authentication, Authorization and Auditing
AD	Active Directory
AoC	Attestation of Compliance
API	Application Programming Interface
ATT&CK®	Adversarial Tactics, Techniques and Common Knowledge
BEC	Business Email Compromise
C2	Command and Control
CDM	Continuous Diagnostic and Mitigation
CIS	Center for Internet Security
COTS	Commercial Off-The-Shelf
CPE	Common Platform Enumeration
CREST	Council of Registered Security Testers
CSA	Cloud Security Alliance
CSC	Critical Security Control or Capability
CSP	Cloud Service Provider
DBIR	Data Breach Investigations Report
DHCP	Dynamic Host Configuration Protocol
DLP	Data Loss Prevention
DMARC	Domain-based Message Authentication, Reporting and Conformance
DMZ	Demilitarized Zone
DNS	Domain Name System
DPI	Deep Packet Inspection
EDR	Endpoint Detection and Response
EOL	End-Of-Life
HTTP	Hypertext Transfer Protocol
HTTPS	Hypertext Transfer Protocol Secure
IaaS	Infrastructure as a Service
IAM	Identity and Access Management
ICT	Information and Communication Technology
IDS	Intrusion Detection System
IG	Implementation Group
IOC	Indicator Of Compromise
IoT	Internet of Things
IP	Internet Protocol
IPS	Intrusion Prevention System
ISAC	Information Sharing and Analysis Center
ISO	International Organization for Standardization
IT	Information Technology
LotL	Living off the Land
MDM	Mobile Device Management
MFA	Multi-Factor Authentication
MS-ISAC	Multi-State Information Sharing and Analysis Center
NaaS	Network as a Service
NIDS	Network Intrusion Detection System
NIST	National Institute of Standards and Technology
OS	Operating System
OSS	Open Source Software
OWASP	Open Web Application Security Project
PaaS	Platform as a Service
PAM	Privileged Access Management
PCI	Payment Card Industry
SaaS	Software as a Service
SAFECode	Software Assurance Forum for Excellence in Code

SCADA	Supervisory Control and Data Acquisition
SCAP	Security Content Automation Program
SIEM	Security Information Event Management or Security Incident Event Management
SMS	Short Messaging Service
SOC	Security Operations Center
SOC 2	Service Organization Control 2
SPAM	Something Posing As Mail
SPF	Sender Policy Framework
SQL	Structured Query Language
SSH	Secure Shell
SSO	Single Sign-On
Telnet	Teletype Network
TLS	Transport Layer Security
TTPs	Tactics, Techniques and Procedures
URL	Uniform Resource Locator
USB	Universal Serial Bus
VPN	Virtual Private Network
WPA2	Wi-Fi Protected Access 2

4 Critical Security Controls

4.0 Structure of the Critical Security Controls

The presentation of each Control in the present document includes the following elements:

- **Overview:** A brief description of the intent of the Control and its utility as a defensive action
- **Why is This Control Critical?** A description of the importance of this Control in blocking, mitigating, or identifying attacks, and an explanation of how attackers actively exploit the absence of this Control
- **Procedures and Tools:** A more technical description of the processes and technologies that enable implementation and automation of this Control
- **Safeguards:** A table of the specific actions that enterprises should take to implement the Control

Profiles

IG1

An IG1 enterprise is small to medium-sized with limited IT and cybersecurity expertise to dedicate towards protecting IT assets and personnel. The principal concern of these enterprises is to keep the business operational, as they have a limited tolerance for downtime. The sensitivity of the data that they are trying to protect is low and principally surrounds employee and financial information.

Safeguards selected for IG1 should be implementable with limited cybersecurity expertise and aimed to thwart general, non-targeted attacks. These Safeguards will also typically be designed to work in conjunction with small or home office Commercial Off-The-Shelf (COTS) hardware and software.

IG2 (Includes IG1)

An IG2 enterprise employs individuals responsible for managing and protecting IT infrastructure. These enterprises support multiple departments with differing risk profiles based on job function and mission. Small enterprise units can have regulatory compliance burdens. IG2 enterprises often store and process sensitive client or enterprise information and can withstand short interruptions of service. A major concern is loss of public confidence if a breach occurs.

Safeguards selected for IG2 help security teams cope with increased operational complexity. Some Safeguards will depend on enterprise-grade technology and specialized expertise to properly install and configure.

IG3 (Includes IG1 and IG2)

An IG3 enterprise employs security experts that specialize in the different facets of cybersecurity (e.g. risk management, penetration testing, application security). IG3 assets and data contain sensitive information or functions that are subject to regulatory and compliance oversight. An IG3 enterprise should address availability of services and the confidentiality and integrity of sensitive data. Successful attacks can cause significant harm to the public welfare.

Safeguards selected for IG3 should abate targeted attacks from a sophisticated adversary and reduce the impact of zero-day attacks.

In addition to the present document, ETSI TR 103 305-2 [i.4], can be referenced for implementing each control.

4.1 Control 1: Inventory and Control of Enterprise Assets

Actively manage (inventory, track, and correct) all enterprise assets (end-user devices, including portable and mobile; network devices; non-computing/Internet of Things (IoT) devices; and servers) connected to the infrastructure physically, virtually, remotely, and those within cloud environments, to accurately know the totality of assets that need to be monitored and protected within the enterprise. This will also support identifying unauthorized and unmanaged assets to remove or remediate.

Why Is This Control Critical?

Enterprises cannot defend what they do not know they have. Managed control of all enterprise assets also plays a critical role in security monitoring, incident response, system backup, and recovery. Enterprises should know what data is critical to them, and proper asset management will help identify those enterprise assets that hold or manage this critical data, so that appropriate security controls can be applied.

External attackers are continuously scanning the internet address space of target enterprises, premise-based or in the cloud, identifying possibly unprotected assets attached to an enterprise's network. Attackers can take advantage of new assets that are installed, yet not securely configured and patched. Internally, unidentified assets can also have weak security configurations that can make them vulnerable to web- or email-based malware and adversaries can leverage weak security configurations for traversing the network, once they are inside.

Additional assets that connect to the enterprise's network (e.g. demonstration systems, temporary test systems, guest networks) should be identified and/or isolated in order to prevent adversarial access from affecting the security of enterprise operations.

Large, complex enterprises understandably struggle with the challenge of managing intricate, fast-changing environments. However, attackers have shown the ability, patience, and willingness to "inventory and control" assets at very large scale in order to support their opportunities.

Another challenge is that portable end-user devices will periodically join a network and then disappear, making the inventory of currently available assets very dynamic. Likewise, cloud environments and virtual machines can be difficult to track in asset inventories when they are shut down or paused.

Another benefit of complete enterprise asset management is supporting incident response, both when investigating the origination of network traffic from an asset on the network and when identifying all potentially vulnerable, or impacted, assets of similar type or location during an incident.

Procedures and Tools

This Control includes both technical and procedural actions, united in a process that accounts for, and manages the inventory of, enterprise assets and all associated data throughout its life cycle. It also links to business governance through establishing data/asset owners who are responsible for each component of a business process. Enterprises can use large-scale, comprehensive enterprise products to maintain IT asset inventories. Smaller enterprises can leverage security tools already installed on enterprise assets or used on the network to collect this data. This includes doing a discovery scan of the network with a vulnerability scanner; reviewing anti-malware logs, logs from endpoint security portals, network logs from switches, or authentication logs; and managing the results in a spreadsheet or database.

Maintaining a current and accurate view of enterprise assets is an ongoing and dynamic process. Even for enterprises, there is rarely a single source of truth, as enterprise assets are not always provisioned or installed by the IT department. The reality is that a variety of sources need to be "crowd-sourced" to determine a high-confidence count of enterprise assets. Enterprises can actively scan on a regular basis, sending a variety of different packet types to identify assets connected to the network. In addition to asset sources mentioned above for small enterprises, larger enterprises can collect data from cloud portals and logs from enterprise platforms such as: Active Directory (AD), Single Sign-On (SSO), Multi-Factor Authentication (MFA), Virtual Private Network (VPN), Intrusion Detection Systems (IDSs) or Deep Packet Inspection (DPI), Mobile Device Management (MDM), and vulnerability scanning tools. Property inventory databases, purchase order tracking, and local inventory lists are other sources of data to determine which devices are connected. There are tools and methods that normalize this data to identify devices that are unique among these sources.

Safeguards

Safeguard	Asset Type	Security Function	Safeguard Title	Safeguard Description	IG1	IG2	IG3
1.1	Devices	Identify	Establish and Maintain Detailed Enterprise Asset Inventory	Establish and maintain an accurate, detailed, and up-to-date inventory of all enterprise assets with the potential to store or process data, to include: end-user devices (including portable and mobile), network devices, non-computing/IoT devices, and servers. Ensure the inventory records the network address (if static), hardware address, machine name, enterprise asset owner, department for each asset, and whether the asset has been approved to connect to the network. For mobile end-user devices, MDM type tools can support this process, where appropriate. This inventory includes assets connected to the infrastructure physically, virtually, remotely, and those within cloud environments. Additionally, it includes assets that are regularly connected to the enterprise's network infrastructure, even if they are not under control of the enterprise. Review and update the inventory of all enterprise assets bi-annually, or more frequently.	x	x	x
1.2	Devices	Respond	Address Unauthorized Assets	Ensure that a process exists to address unauthorized assets on a weekly basis. The enterprise may choose to remove the asset from the network, deny the asset from connecting remotely to the network, or quarantine the asset.	x	x	x
1.3	Devices	Detect	Utilize an Active Discovery Tool	Utilize an active discovery tool to identify assets connected to the enterprise's network. Configure the active discovery tool to execute daily, or more frequently.		x	x
1.4	Devices	Identify	Use Dynamic Host Configuration Protocol (DHCP) Logging to Update Enterprise Asset Inventory	Use DHCP logging on all DHCP servers or Internet Protocol (IP) address management tools to update the enterprise's asset inventory. Review and use logs to update the enterprise's asset inventory weekly, or more frequently.		x	x
1.5	Devices	Detect	Use a Passive Asset Discovery Tool	Use a passive discovery tool to identify assets connected to the enterprise's network. Review and use scans to update the enterprise's asset inventory at least weekly, or more frequently.			x

4.2 Control 2: Inventory and Control of Software Assets

Actively manage (inventory, track, and correct) all software (operating systems and applications) on the network so that only authorized software is installed and can execute, and that all unauthorized and unmanaged software is found and prevented from installation or execution.

Why Is This Control Critical?

A complete software inventory is a critical foundation for preventing attacks. Attackers continuously scan target enterprises looking for vulnerable versions of software that can be remotely exploited. For example, if a user opens a malicious website or attachment with a vulnerable browser, an attacker can often install backdoor programs and bots that give the attacker long-term control of the system. Attackers can also use this access to move laterally through the network. One of the key defences against these attacks is updating and patching software. However, without a complete inventory of software assets, an enterprise cannot determine if they have vulnerable software, or if there are potential licensing violations.

Even if a patch is not yet available, a complete software inventory list allows an enterprise to guard against known attacks until the patch is released. Some sophisticated attackers use "zero-day exploits", which take advantage of previously unknown vulnerabilities that have yet to have a patch released from the software vendor. Depending on the severity of the exploit, an enterprise can implement temporary mitigation measures to guard against attacks until the patch is released.

Management of software assets is also important to identify unnecessary security risks. An enterprise should review its software inventory to identify any enterprise assets running software that is not needed for business purposes. For example, an enterprise asset can come installed with default software that creates a potential security risk and provides no benefit to the enterprise. It is critical to inventory, understand, assess, and manage all software connected to an enterprise's infrastructure.

Procedures and Tools

Allowlisting can be implemented using a combination of commercial allowlisting tools, policies, or application execution tools that come with anti-virus suites and popular operating systems. Commercial software and asset inventory tools are widely available and in use in many enterprises today. The best of these tools provide an inventory check of hundreds of common applications used in enterprises, pulling information about the patch level of each installed program to ensure that it is the latest version and leveraging standardized application names, such as those found in the Common Platform Enumeration (CPE) specification.

Features that implement allowlists are included in many modern endpoint security suites and even natively implemented in certain versions of major operating systems. Moreover, commercial solutions are increasingly bundling together anti-virus, anti-spyware, personal firewall, and host-based Intrusion Detection Systems (IDSs) and Intrusion Prevention Systems (IPSs), along with application performing allow and deny listing. In particular, most endpoint security solutions can look at the name, file system location, and/or cryptographic hash of a given executable to determine whether the application should be allowed to run on the protected machine. The most effective of these tools offer custom allowlists based on executable path, hash, or regular expression matching. Some even include a suspicious list function that allows administrators to define rules for execution of specific programs only by certain users and at certain times of day.

Safeguards

Safeguard	Asset Type	Security Function	Safeguard Title	Safeguard Description	IG1	IG2	IG3
2.1	Applications	Identify	Establish and Maintain a Software Inventory	Establish and maintain a detailed inventory of all licensed software installed on enterprise assets. The software inventory should document the title, publisher, initial install/use date, and business purpose for each entry; where appropriate, include the Uniform Resource Locator (URL), app store(s), version(s), deployment mechanism, and decommission date. Review and update the software inventory bi-annually, or more frequently.	x	x	x
2.2	Applications	Identify	Ensure Authorized Software is Currently Supported	Ensure that only currently supported software is designated as authorized in the software inventory for enterprise assets. If software is unsupported, yet necessary for the fulfilment of the enterprise's mission, document an exception detailing mitigating controls and residual risk acceptance. For any unsupported software without an exception documentation, designate as unauthorized. Review the software list to verify software support at least monthly, or more frequently.	x	x	x
2.3	Applications	Respond	Address Unauthorized Software	Ensure that unauthorized software is either removed from use on enterprise assets or receives a documented exception. Review monthly, or more frequently.	x	x	x
2.4	Applications	Detect	Utilize Automated Software Inventory Tools	Utilize software inventory tools, when possible, throughout the enterprise to automate the discovery and documentation of installed software.		x	x
2.5	Applications	Protect	Allowlist Authorized Software	Use technical controls, such as application allowlisting, to ensure that only authorized software can execute or be accessed. Reassess bi-annually, or more frequently.		x	x
2.6	Applications	Protect	Allowlist Authorized Libraries	Use technical controls to ensure that only authorized software libraries, such as specific .dll, .ocx, .so, etc., files, are allowed to load into a system process. Block unauthorized libraries from loading into a system process. Reassess bi-annually, or more frequently.		x	x
2.7	Applications	Protect	Allowlist Authorized Scripts	Use technical controls, such as digital signatures and version control, to ensure that only authorized scripts, such as specific .ps1, .py, etc., files, are allowed to execute. Block unauthorized scripts from executing. Reassess bi-annually, or more frequently.			x

4.3 Control 3: Data Protection

Develop processes and technical controls to identify, classify, securely handle, retain, and dispose of data.

Why Is This Control Critical?

Data is no longer only contained within an enterprise's border; it is in the cloud, on portable end-user devices where users work from home, and is often shared with partners or online services that might have it anywhere in the world. In addition to sensitive data an enterprise holds related to finances, intellectual property, and customer data, there also might be numerous international regulations for protection of personal data. Data privacy has become increasingly important, and enterprises are learning that privacy is about the appropriate use and management of data, not just encryption. Data should be appropriately managed through its entire life cycle. These privacy rules can be complicated for multi-national enterprises of any size; however, there are fundamentals that can apply to all.

Once attackers have penetrated an enterprise's infrastructure, one of their first tasks is to find and exfiltrate data. Enterprises might not be aware that sensitive data is leaving their environment because they are not monitoring data outflows.

While many attacks occur on the network, others involve physical theft of portable end-user devices, attacks on service providers or other partners holding sensitive data. Other sensitive enterprise assets may also include non-computing devices that provide management and control of physical systems, such as Supervisory Control and Data Acquisition (SCADA) systems.

The enterprise's loss of control over protected or sensitive data is a serious and often reportable business impact. While some data is compromised or lost as a result of theft or espionage, the vast majority are a result of poorly understood data management rules, and user error. The adoption of data encryption, both in transit and at rest, can provide mitigation against data compromise, and, even more important, it is a regulatory requirement for most controlled data.

Procedures and Tools

It is important for an enterprise to develop a data management process that includes a data management framework, data classification guidelines, and requirements for protection, handling, retention, and disposal of data. There should also be a data breach process that plugs into the incident response plan, and the compliance and communication plans. To derive data sensitivity levels, enterprises need to catalogue their key types of data and the overall criticality (impact to its loss or corruption) to the enterprise. This analysis would be used to create an overall data classification scheme for the enterprise. Enterprises may use labels, such as "Sensitive", "Confidential" and "Public" and classify their data according to those labels.

Once the sensitivity of the data has been defined, a data inventory or mapping should be developed that identifies software accessing data at various sensitivity levels and the enterprise assets that house those applications. Ideally, the network would be separated so that enterprise assets of the same sensitivity level are on the same network and separated from enterprise assets with different sensitivity levels. If possible, firewalls need to control access to each segment, and have user access rules applied to only allow those with a business need to access the data.

Safeguards

Safeguard	Asset Type	Security Function	Safeguard Title	Safeguard Description	IG1	IG2	IG3
3.1	Data	Identify	Establish and Maintain a Data Management Process	Establish and maintain a data management process. In the process, address data sensitivity, data owner, handling of data, data retention limits, and disposal requirements, based on sensitivity and retention standards for the enterprise. Review and update documentation annually, or when significant enterprise changes occur that could impact this Safeguard.	x	x	x
3.2	Data	Identify	Establish and Maintain a Data Inventory	Establish and maintain a data inventory, based on the enterprise's data management process. Inventory sensitive data, at a minimum. Review and update inventory annually, at a minimum, with a priority on sensitive data.	x	x	x

Safeguard	Asset Type	Security Function	Safeguard Title	Safeguard Description	IG1	IG2	IG3
3.3	Data	Protect	Configure Data Access Control Lists	Configure data access control lists based on a user's need to know. Apply data access control lists, also known as access permissions, to local and remote file systems, databases, and applications.	x	x	x
3.4	Data	Protect	Enforce Data Retention	Retain data according to the enterprise's data management process. Data retention should include both minimum and maximum timelines.	x	x	x
3.5	Data	Protect	Securely Dispose of Data	Securely dispose of data as outlined in the enterprise's data management process. Ensure the disposal process and method are commensurate with the data sensitivity.	x	x	x
3.6	Devices	Protect	Encrypt Data on End-User Devices	Encrypt data on end-user devices containing sensitive data.	x	x	x
3.7	Data	Identify	Establish and Maintain a Data Classification Scheme	Establish and maintain an overall data classification scheme for the enterprise. Enterprises may use labels, such as "Sensitive", "Confidential" and "Public" and classify their data according to those labels. Review and update the classification scheme annually, or when significant enterprise changes occur that could impact this Safeguard.		x	x
3.8	Data	Identify	Document Data Flows	Document data flows. Data flow documentation includes service provider data flows and should be based on the enterprise's data management process. Review and update documentation annually, or when significant enterprise changes occur that could impact this Safeguard.		x	x
3.9	Data	Protect	Encrypt Data on Removable Media	Encrypt data on removable media.		x	x
3.10	Data	Protect	Encrypt Sensitive Data in Transit	Encrypt sensitive data in transit. Example implementations can include: Transport Layer Security (TLS) and Open Secure Shell (OpenSSH).		x	x
3.11	Data	Protect	Encrypt Sensitive Data at Rest	Encrypt sensitive data at rest on servers, applications, and databases containing sensitive data. Storage-layer encryption, also known as server-side encryption, meets the minimum expectation of this Safeguard. Additional encryption methods may include application-layer encryption, also known as client-side encryption, where access to the data storage device(s) does not permit access to the plain-text data.		x	x
3.12	Network	Protect	Segment Data Processing and Storage Based on Sensitivity	Segment data processing and storage based on the sensitivity of the data. Do not process sensitive data on enterprise assets intended for lower sensitivity data.		x	x
3.13	Data	Protect	Deploy a Data Loss Prevention Solution	Implement an automated tool, such as a host-based Data Loss Prevention (DLP) tool to identify all sensitive data stored, processed, or transmitted through enterprise assets, including those located onsite or at a remote service provider, and update the enterprise's sensitive data inventory.			x
3.14	Data	Detect	Log Sensitive Data Access	Log sensitive data access, including modification and disposal.			x

4.4 Control 4: Secure Configuration of Enterprise Assets and Software

Establish and maintain the secure configuration of enterprise assets (end-user devices, including portable and mobile; network devices; non-computing/IoT devices; and servers) and software (operating systems and applications).

Why Is This Control Critical?

As delivered from manufacturers and resellers, the default configurations for enterprise assets and software are normally geared towards ease-of-deployment and ease-of-use rather than security. Basic controls, open services and ports, default accounts or passwords, pre-configured Domain Name System (DNS) settings, older (vulnerable) protocols, and pre-installation of unnecessary software can all be exploitable if left in their default state. Further, these security configuration updates need to be managed and maintained over the life cycle of enterprise assets and software. Configuration updates need to be tracked and approved through configuration management workflow process to maintain a record that can be reviewed for compliance, leveraged for incident response, and to support audits. This Control is important to on-premises devices, as well as remote devices, network devices, and cloud environments.

Service providers play a key role in modern infrastructures, especially for smaller enterprises. They often are not set up by default in the most secure configuration to provide flexibility for their customers to apply their own security policies. Therefore, the presence of default accounts or passwords, excessive access, or unnecessary services are common in default configurations. These could introduce weaknesses that are under the responsibility of the enterprise that is using the software, rather than the service provider. This extends to ongoing management and updates, as some Platform as a Service (PaaS) only extend to the operating system, so patching and updating hosted applications are under the responsibility of the enterprise.

Even after a strong initial configuration is developed and applied, it should be continually managed to avoid degrading security as software is updated or patched, new security vulnerabilities are reported, and configurations are "tweaked" to allow the installation of new software or to support new operational requirements.

Procedures and Tools

There are many available security baselines for each system. Enterprises should start with these publicly developed, vetted, and supported security benchmarks, security guides, or checklists.

Enterprises should augment or adjust these baselines to satisfy enterprise security policies, and industry and government regulatory requirements. Deviations of standard configurations and rationale should be documented to facilitate future reviews or audits.

For a larger or more complex enterprise, there will be multiple security baseline configurations based on security requirements or classification of the data on the enterprise asset. Here is an example of the steps to build a secure baseline image:

- 1) Determine the risk classification of the data handled/stored on the enterprise asset (e.g. high, moderate, low risk).
- 2) Create a security configuration script that sets system security settings to meet the requirements to protect the data used on the enterprise asset. Use benchmarks, such as the ones described earlier in this clause.
- 3) Install the base operating system software.
- 4) Apply appropriate operating system and security patches.
- 5) Install appropriate application software packages, tool, and utilities.
- 6) Apply appropriate updates to software installed in Step 4.
- 7) Install local customization scripts to this image.
- 8) Run the security script created in Step 2 to set the appropriate security level.
- 9) Run a SCAP compliant tool to record/score the system setting of the baseline image.
- 10) Perform a security quality assurance test.
- 11) Save this base image in a secure location.

Commercial and/or free configuration management tools can be deployed to measure the settings of operating systems and applications of managed machines to look for deviations from the standard image configurations. Commercial configuration management tools use some combination of an agent installed on each managed system, or agentless inspection of systems through remotely logging into each enterprise asset using administrator credentials. Additionally, a hybrid approach is sometimes used whereby a remote session is initiated, a temporary or dynamic agent is deployed on the target system for the scan, and then the agent is removed.

Safeguards

Safeguard	Asset Type	Security Function	Safeguard Title	Safeguard Description	IG1	IG2	IG3
4.1	Applications	Protect	Establish and Maintain a Secure Configuration Process	Establish and maintain a secure configuration process for enterprise assets (end-user devices, including portable and mobile; non-computing/IoT devices; and servers) and software (operating systems and applications). Review and update documentation annually, or when significant enterprise changes occur that could impact this Safeguard.	x	x	x
4.2	Network	Protect	Establish and Maintain a Secure Configuration Process for Network Infrastructure	Establish and maintain a secure configuration process for network devices. Review and update documentation annually, or when significant enterprise changes occur that could impact this Safeguard.	x	x	x
4.3	Users	Protect	Configure Automatic Session Locking on Enterprise Assets	Configure automatic session locking on enterprise assets after a defined period of inactivity. For general purpose operating systems, the period should not exceed 15 minutes. For mobile end-user devices, the period should not exceed 2 minutes.	x	x	x
4.4	Devices	Protect	Implement and Manage a Firewall on Servers	Implement and manage a firewall on servers, where supported. Example implementations include a virtual firewall, operating system firewall, or a third-party firewall agent.	x	x	x
4.5	Devices	Protect	Implement and Manage a Firewall on End-User Devices	Implement and manage a host-based firewall or port-filtering tool on end-user devices, with a default-deny rule that drops all traffic except those services and ports that are explicitly allowed.	x	x	x
4.6	Network	Protect	Securely Manage Enterprise Assets and Software	Securely manage enterprise assets and software. Example implementations include managing configuration through version-controlled-infrastructure-as-code and accessing administrative interfaces over secure network protocols, such as Secure Shell (SSH) and Hypertext Transfer Protocol Secure (HTTPS). Do not use insecure management protocols, such as Telnet (Teletype Network) and HTTP, unless operationally essential.	x	x	x
4.7	Users	Protect	Manage Default Accounts on Enterprise Assets and Software	Manage default accounts on enterprise assets and software, such as root, administrator, and other pre-configured vendor accounts. Example implementations can include: disabling default accounts or making them unusable.	x	x	x

Safeguard	Asset Type	Security Function	Safeguard Title	Safeguard Description	IG1	IG2	IG3
4.8	Devices	Protect	Uninstall or Disable Unnecessary Services on Enterprise Assets and Software	Uninstall or disable unnecessary services on enterprise assets and software, such as an unused file sharing service, web application module, or service function.		x	x
4.9	Devices	Protect	Configure Trusted DNS Servers on Enterprise Assets	Configure trusted DNS servers on enterprise assets. Example implementations include: configuring assets to use enterprise-controlled DNS servers and/or reputable externally accessible DNS servers.		x	x
4.10	Devices	Respond	Enforce Automatic Device Lockout on Portable End-User Devices	Enforce automatic device lockout following a predetermined threshold of local failed authentication attempts on portable end-user devices, where supported. For laptops, do not allow more than 20 failed authentication attempts; for tablets and smartphones, no more than 10 failed authentication attempts..		x	x
4.11	Devices	Protect	Enforce Remote Wipe Capability on Portable End-User Devices	Remotely wipe enterprise data from enterprise-owned portable end-user devices when deemed appropriate such as lost or stolen devices, or when an individual no longer supports the enterprise.		x	x
4.12	Devices	Protect	Separate Enterprise Workspaces on Mobile End-User Devices	Ensure separate enterprise workspaces are used on mobile end-user devices, where supported.			x

4.5 Control 5: Account Management

Use processes and tools to assign and manage authorization to credentials for user accounts, including administrator accounts, as well as service accounts, to enterprise assets and software.

Why Is This Control Critical?

It is easier for an external or internal threat actor to gain unauthorized access to enterprise assets or data through using valid user credentials than through "hacking" the environment. There are many ways to covertly obtain access to user accounts, including: weak passwords, accounts still valid after a user leaves the enterprise, dormant or lingering test accounts, shared accounts that have not been changed in months or years, service accounts embedded in applications for scripts, a user having the same password as one they use for an online account that has been compromised (in a public password dump), social engineering a user to give their password, or using malware to capture passwords or tokens in memory or over the network.

Administrative, or highly privileged, accounts are a particular target, because they allow attackers to add other accounts, or make changes to assets that could make them more vulnerable to other attacks. Service accounts are also sensitive, as they are often shared among teams, internal and external to the enterprise, and sometimes not known about, only to be revealed in standard account management audits.

Finally, account logging and monitoring is a critical component of security operations. While account logging and monitoring are covered in Control 8 (Audit Log Management), it is important in the development of a comprehensive Identity and Access Management (IAM) program.

Procedures and Tools

Credentials are assets that should be inventoried and tracked like enterprise assets and software, as they are the primary entry point into the enterprise. Appropriate password policies and guidance not to reuse passwords should be developed.

Accounts should also be tracked; any account that is dormant should be disabled and eventually removed from the system. There should be periodic audits to ensure all active accounts are traced back to authorized users of the enterprise asset. Look for new accounts added since previous review, especially administrator and service accounts. Close attention should be made to identify and track administrative, or high-privileged accounts and service accounts.

Users with administrator or other privileged access should have separate accounts for those higher authority tasks. These accounts would only be used when performing those tasks or accessing especially sensitive data, to reduce risk in case their normal user account is compromised. For users with multiple accounts, their base user account, used day-to-day for non-administrative tasks, should not have any elevated privileges.

Single Sign-On (SSO) is convenient and secure when an enterprise has many applications, including cloud applications, which helps reduce the number of passwords a user should manage. Users should use password manager applications to securely store their passwords, and should be instructed not to keep them in spreadsheets or text files on their computers. MFA should be used for remote access.

Users should also be automatically logged out of the system after a period of inactivity, and be trained to lock their screen when they leave their device to minimize the possibility of someone else in physical proximity around the user accessing their system, applications, or data.

Digital Identity Guidelines should be used [i.5].

Safeguards

Safeguard	Asset Type	Security Function	Safeguard Title	Safeguard Description	IG1	IG2	IG3
5.1	Users	Identify	Establish and Maintain an Inventory of Accounts	Establish and maintain an inventory of all accounts managed in the enterprise. The inventory should include both user and administrator accounts. The inventory, at a minimum, should contain the person's name, username, start/stop dates, and department. Validate that all active accounts are authorized, on a recurring schedule at a minimum quarterly, or more frequently.	x	x	x
5.2	Users	Protect	Use Unique Passwords	Use unique passwords for all enterprise assets. Best practice implementation includes, at a minimum, an 8-character password for accounts using MFA and a 14-character password for accounts not using MFA.	x	x	x
5.3	Users	Respond	Disable Dormant Accounts	Delete or disable any dormant accounts after a period of 45 days of inactivity, where supported.	x	x	x
5.4	Users	Protect	Restrict Administrator Privileges to Dedicated Administrator Accounts	Restrict administrator privileges to dedicated administrator accounts on enterprise assets. Conduct general computing activities, such as internet browsing, email, and productivity suite use, from the user's primary, non-privileged account.	x	x	x
5.5	Users	Identify	Establish and Maintain an Inventory of Service Accounts	Establish and maintain an inventory of service accounts. The inventory, at a minimum, should contain department owner, review date, and purpose. Perform service account reviews to validate that all active accounts are authorized, on a recurring schedule at a minimum quarterly, or more frequently.		x	x
5.6	Users	Protect	Centralize Account Management	Centralize account management through a directory or identity service.		x	x

4.6 Control 6: Access Control Management

Use processes and tools to create, assign, manage, and revoke access credentials and privileges for user, administrator, and service accounts for enterprise assets and software.

Why Is This Control Critical?

Where Control 5 deals specifically with account management, Control 6 focuses on managing what access these accounts have, ensuring users only have access to the data or enterprise assets appropriate for their role, and ensuring that there is strong authentication for critical or sensitive enterprise data or functions. Accounts should only have the minimal authorization needed for the role. Developing consistent access rights for each role and assigning roles to users is a best practice. Developing a program for complete provision and de-provisioning access is also important. Centralizing this function is ideal.

There are some user activities that pose greater risk to an enterprise, either because they are accessed from untrusted networks, or performing administrator functions that allow the ability to add, change, or remove other accounts, or make configuration changes to operating systems or applications to make them less secure. This also enforces the importance of using MFA and Privileged Access Management (PAM) tools.

Some users have access to enterprise assets or data they do not need for their role; this might be due to an immature process that gives all users all access, or lingering access as users change roles within the enterprise over time. Local administrator privileges to users' laptops are also an issue, as any malicious code installed or downloaded by the user can have greater impact on the enterprise asset running as administrator. User, administrator, and service account access should be based on enterprise role and need.

Procedures and Tools

There should be a process where privileges are granted and revoked for user accounts. This ideally is based on enterprise role and need through role-based access. Role-based access is a technique to define and manage access requirements for each account based on: need to know, least privilege, privacy requirements, and/or separation of duties. There are technology tools to help manage this process. However, there might be more granular or temporary access based on circumstance.

MFA should be universal for all privileged or administrator accounts. There are many tools that have smartphone applications to perform this function, and are easy to deploy. Using the number-generator feature is more secure than just sending a Short Messaging Service (SMS) message with a one-time code, or prompting a "push" alert for a user to accept. However, neither is recommended for privileged account MFA. PAM tools are available for privileged account control, and provide a one-time password that should be checked out for each use. For additional security in system administration, "jump-boxes" or out of band terminal connections should be used.

Comprehensive account de-provisioning is important. Many enterprises have repeatable consistent processes for removing access when employees leave the enterprise. However, that process is not always consistent for contractors, and should be included in the standard de-provisioning process. Enterprises should also inventory and track service accounts, as a common error is leaving clear text tokens or passwords in code, and posting to public cloud-based code repositories.

High-privileged accounts should not be used for day-to-day use, such as web surfing and email reading. Administrators should have separate accounts that do not have elevated privileges for daily office use, and should log into administrator accounts only when performing administrator functions requiring that level of authorization. Security personnel should periodically gather a list of running processes to determine whether any browsers or email readers are running with high privileges.

Digital Identity Guidelines should be used [i.5].

Safeguards

Safeguard	Asset Type	Security Function	Safeguard Title	Safeguard Description	IG1	IG2	IG3
6.1	Users	Protect	Establish an Access Granting Process	Establish and follow a process, preferably automated, for granting access to enterprise assets upon new hire, rights grant, or role change of a user.	x	x	x
6.2	Users	Protect	Establish an Access Revoking Process	Establish and follow a process, preferably automated, for revoking access to enterprise assets, through disabling accounts immediately upon termination, rights revocation, or role change of a user. Disabling accounts, instead of deleting accounts, may be necessary to preserve audit trails.	x	x	x
6.3	Users	Protect	Implement MFA for Externally-Exposed Applications	Configure all externally-exposed enterprise or third-party applications to enforce MFA, where supported. Enforcing MFA through a directory service or SSO provider is a satisfactory implementation of this Safeguard.	x	x	x
6.4	Users	Protect	Implement MFA for Remote Network Access	Implement MFA for remote network access.	x	x	x
6.5	Users	Protect	Implement MFA for Administrative Access	Activate MFA for all administrative access accounts, where supported, on all enterprise assets, whether managed on-site or through a third-party provider.	x	x	x
6.6	Users	Identify	Establish and Maintain an Inventory of Authentication and Authorization Systems	Establish and maintain an inventory of the enterprise's authentication and authorization systems, including those hosted on-site or at a remote service provider. Review and update the inventory, at a minimum, annually, or more frequently.		x	x
6.7	Users	Protect	Centralize Access Control	Centralize access control for all enterprise assets through a directory service or SSO provider, where supported.		x	x
6.8	Data	Protect	Define and Maintain Role-Based Access Control	Define and maintain role-based access control, through determining and documenting the access rights necessary for each role within the enterprise to successfully carry out its assigned duties. Perform access control reviews of enterprise assets to validate that all privileges are authorized, on a recurring schedule at a minimum annually, or more frequently.			x

4.7 Control 7: Continuous Vulnerability Management

Develop a plan to continuously assess and track vulnerabilities on all enterprise assets within the enterprise's infrastructure, in order to remediate, and minimize, the window of opportunity for attackers. Monitor public and private industry sources for new threat and vulnerability information.

Why Is This Control Critical?

Cyber defenders are constantly being challenged from attackers who are looking for vulnerabilities within their infrastructure to exploit and gain access. Defenders should have timely threat information available to them about: software updates, patches, security advisories, threat bulletins, etc., and they should regularly review their environment to identify these vulnerabilities before the attackers do [i.10]. Understanding and managing vulnerabilities is a continuous activity, requiring focus of time, attention, and resources.

Attackers have access to the same information and can often take advantage of vulnerabilities more quickly than an enterprise can remediate. While there is a gap in time from a vulnerability being known to when it is patched, defenders can prioritize which vulnerabilities are most impactful to the enterprise, or likely to be exploited first due to ease of use. For example, when researchers or the community report new vulnerabilities, vendors develop and deploy patches, Indicators Of Compromise (IOCs), and updates. Defenders need to assess the risk of the new vulnerability to the enterprise, regression-test patches, and install the patch.

There is never perfection in this process. Attackers might be using an exploit to a vulnerability that is not known within the security community. They might have developed an exploit to this vulnerability referred to as a "zero-day" exploit. Once the vulnerability is known in the community, the process mentioned above starts. Therefore, defenders should keep in mind that an exploit might already exist when the vulnerability is widely socialized. Sometimes vulnerabilities might be known within a closed community (e.g. vendor still developing a fix) for weeks, months, or years before it is disclosed publicly. Defenders have to be aware that there might always be vulnerabilities they cannot remediate, and therefore need to use other controls to mitigate.

Enterprises that do not assess their infrastructure for vulnerabilities and proactively address discovered flaws face a significant likelihood of having their enterprise assets compromised. Defenders face particular challenges in scaling remediation across an entire enterprise, and prioritizing actions with conflicting priorities, while not impacting the enterprise's business or mission.

Procedures and Tools

A large number of vulnerability scanning tools are available to evaluate the security configuration of enterprise assets. Some enterprises have also found commercial services using remotely managed scanning appliances to be effective. To help standardize the definitions of discovered vulnerabilities across an enterprise, it is preferable to use vulnerability scanning tools that map vulnerabilities to one or more of the following industry-recognized vulnerability, configuration and platform classification schemes and languages.

The frequency of scanning activities should increase as the diversity of an enterprise's assets increases to account for the varying patch cycles of each vendor. Advanced vulnerability scanning tools can be configured with user credentials to authenticate into enterprise assets and perform more comprehensive assessments. These are called "authenticated scans".

In addition to the scanning tools that check for vulnerabilities and misconfigurations across the network, various free and commercial tools can evaluate security settings and configurations of enterprise assets. Such tools can provide fine-grained insight into unauthorized changes in configuration or the inadvertent introduction of security weaknesses from administrators.

Effective enterprises link their vulnerability scanners with problem-ticketing systems that track and report progress on fixing vulnerabilities. This can help highlight unmitigated critical vulnerabilities to senior management to ensure they are resolved. Enterprises can also track how long it took to remediate a vulnerability, after identified, or a patch has been issued. These can support internal or industry compliance requirements. Some mature enterprises will go over these reports in IT security steering committee meetings, which bring leaders from IT and the business together to prioritize remediation efforts based on business impact.

In selecting which vulnerabilities to fix, or patches to apply, an enterprise should augment relevant repositories with data concerning the likelihood of a threat actor using a vulnerability, or potential impact of an exploit to the enterprise. Information on the likelihood of exploitation should also be periodically updated based on the most current threat information [i.10]. For example, the release of a new exploit, or new intelligence relating to exploitation of the vulnerability, should change the priority through which the vulnerability should be considered for patching. Various commercial systems are available to allow an enterprise to automate and maintain this process in a scalable manner.

The most effective vulnerability scanning tools compare the results of the current scan with previous scans to determine how the vulnerabilities in the environment have changed over time. Security personnel use these features to conduct vulnerability trending from month to month.

Finally, there should be a quality assurance process to verify configuration updates, or that patches are implemented correctly and across all relevant enterprise assets.

Safeguards

Safeguard	Asset Type	Security Function	Safeguard Title	Safeguard Description	IG1	IG2	IG3
7.1	Applications	Protect	Establish and Maintain a Vulnerability Management Process	Establish and maintain a documented vulnerability management process for enterprise assets. Review and update documentation annually, or when significant enterprise changes occur that could impact this Safeguard.	x	x	x
7.2	Applications	Respond	Establish and Maintain a Remediation Process	Establish and maintain a risk-based remediation strategy documented in a remediation process, with monthly, or more frequent, reviews.	x	x	x
7.3	Applications	Protect	Perform Automated Operating System Patch Management	Perform operating system updates on enterprise assets through automated patch management on a monthly, or more frequent, basis.	x	x	x
7.4	Applications	Protect	Perform Automated Application Patch Management	Perform application updates on enterprise assets through automated patch management on a monthly, or more frequent, basis.	x	x	x
7.5	Applications	Identify	Perform Automated Vulnerability Scans of Internal Enterprise Assets	Perform automated vulnerability scans of internal enterprise assets on a quarterly, or more frequent, basis. Conduct both authenticated and unauthenticated scans, using a SCAP-compliant vulnerability scanning tool.		x	x
7.6	Applications	Identify	Perform Automated Vulnerability Scans of Externally-Exposed Enterprise Assets	Perform automated vulnerability scans of externally-exposed enterprise assets using a SCAP-compliant vulnerability scanning tool. Perform scans on a monthly, or more frequent, basis.		x	x
7.7	Applications	Respond	Remediate Detected Vulnerabilities	Remediate detected vulnerabilities in software through processes and tooling on a monthly, or more frequent, basis, based on the remediation process.		x	x

4.8 Control 8: Audit Log Management

Collect, alert, review, and retain audit logs of events that could help detect, understand, or recover from an attack.

Why Is This Control Critical?

Log collection and analysis is critical for an enterprise's ability to detect malicious activity quickly. Sometimes audit records are the only evidence of a successful attack. Attackers know that many enterprises keep audit logs for compliance purposes, but rarely analyse them. Attackers use this knowledge to hide their location, malicious software, and activities on victim machines. Due to poor or non-existent log analysis processes, attackers sometimes control victim machines for months or years without anyone in the target enterprise knowing.

There are two types of logs that are generally treated and often configured independently: system logs and audit logs. System logs typically provide system-level events that show various system process start/end times, crashes, etc. These are native to systems, and take less configuration to turn on. Audit logs typically include user-level events - when a user logged in, accessed a file, etc. - and take more planning and effort to set up.

Logging records are also critical for incident response. After an attack has been detected, log analysis can help enterprises understand the extent of an attack. Complete logging records can show, for example, when and how the attack occurred, what information was accessed, and if data was exfiltrated. Retention of logs is also critical in case a follow-up investigation is required or if an attack remained undetected for a long period of time.

Procedures and Tools

Most enterprise assets and software offer logging capabilities. Such logging should be activated, with logs sent to centralized logging servers. Firewalls, proxies, and remote access systems (Virtual Private Network (VPN), dial-up, etc.) should all be configured for verbose logging where beneficial. Retention of logging data is also important in the event an incident investigation is required.

Furthermore, all enterprise assets should be configured to create access control logs when a user attempts to access resources without the appropriate privileges. To evaluate whether such logging is in place, an enterprise should periodically scan through its logs and compare them with the enterprise asset inventory assembled as part of Control 1, in order to ensure that each managed asset actively connected to the network is periodically generating logs.

Safeguards

Safeguard	Asset Type	Security Function	Safeguard Title	Safeguard Description	IG1	IG2	IG3
8.1	Network	Protect	Establish and Maintain an Audit Log Management Process	Establish and maintain an audit log management process that defines the enterprise's logging requirements. At a minimum, address the collection, review, and retention of audit logs for enterprise assets. Review and update documentation annually, or when significant enterprise changes occur that could impact this Safeguard.	x	x	x
8.2	Network	Detect	Collect Audit Logs	Collect audit logs. Ensure that logging, per the enterprise's audit log management process, has been enabled across enterprise assets.	x	x	x
8.3	Network	Protect	Ensure Adequate Audit Log Storage	Ensure that logging destinations maintain adequate storage to comply with the enterprise's audit log management process.	x	x	x
8.4	Network	Protect	Standardize Time Synchronization	Standardize time synchronization. Configure at least two synchronized time sources across enterprise assets, where supported.		x	x
8.5	Network	Detect	Collect Detailed Audit Logs	Configure detailed audit logging for enterprise assets containing sensitive data. Include event source, date, username, timestamp, source addresses, destination addresses, and other useful elements that could assist in a forensic investigation.		x	x
8.6	Network	Detect	Collect DNS Query Audit Logs	Collect DNS query audit logs on enterprise assets, where appropriate and supported.		x	x
8.7	Network	Detect	Collect URL Request Audit Logs	Collect URL request audit logs on enterprise assets, where appropriate and supported.		x	x
8.8	Devices	Detect	Collect Command-Line Audit Logs	Collect command-line audit logs. Example implementations include collecting audit logs from PowerShell®, BASH™, and remote administrative terminals.		x	x
8.9	Network	Detect	Centralize Audit Logs	Centralize, to the extent possible, audit log collection and retention across enterprise assets.		x	x
8.10	Network	Protect	Retain Audit Logs	Retain audit logs across enterprise assets for a minimum of 90 days.		x	x
8.11	Network	Detect	Conduct Audit Log Reviews	Conduct reviews of audit logs to detect anomalies or abnormal events that could indicate a potential threat. Conduct reviews on a weekly, or more frequent, basis.		x	x

Safeguard	Asset Type	Security Function	Safeguard Title	Safeguard Description	IG1	IG2	IG3
8.12	Data	Detect	Collect Service Provider Logs	Collect service provider logs, where supported. Example implementations include collecting authentication and authorization events, data creation and disposal events, and user management events.			x

4.9 Control 9: Email and Web Browser Protections

Improve protections and detections of threats from email and web vectors, as these are opportunities for attackers to manipulate human behaviour through direct engagement.

Why Is This Control Critical?

Web browsers and email clients are very common points of entry for attackers because of their direct interaction with users inside an enterprise. Content can be crafted to entice or spoof users into disclosing credentials, providing sensitive data, or providing an open channel to allow attackers to gain access, thus increasing risk to the enterprise. Since email and web are the main means that users interact with external and untrusted users and environments, these are prime targets for both malicious code and social engineering. Additionally, as enterprises move to web-based email, or mobile email access, users no longer use traditional full-featured email clients, which provide embedded security controls like connection encryption, strong authentication, and phishing reporting buttons.

Procedures and Tools

Port scanning tools are used to determine which services are listening on the network for a range of target systems. In addition to determining which ports are open, effective port scanners can be configured to identify the version of the protocol and service listening on each discovered port. This list of services and their versions are compared against an inventory of services required by the organization for each server and workstation in an asset management system. Recently added features in these port scanners are being used to determine the changes in services offered by scanned machines on the network since the previous scan, helping security personnel identify differences over time.

Web Browser

Cybercriminals can exploit web browsers in multiple ways. If they have access to exploits of vulnerable browsers, they can craft malicious webpages that can exploit those vulnerabilities when browsed with an insecure, or unpatched, browser. Alternatively, they can try to target any number of common web browser third-party plugins that may allow them to hook into the browser or even directly into the operating system or application. These plugins, much like any other software within an environment, need to be reviewed for vulnerabilities, kept up-to-date with latest patches or versions, and controlled. Many come from untrusted sources, and some are even written to be malicious. Therefore, it is best to prevent users from intentionally or unintentionally installing malware that might be hiding in some of these plugins, extensions, and add-ons. Simple configuration updates to the browser can make it much harder for malware to get installed through reducing the ability of installing add-ons/plugins/extensions and preventing specific types of content from automatically executing.

Most popular browsers employ a database of phishing and/or malware sites to protect against the most common threats. A best practice is to enable these content filters and turn on the pop-up blockers. Pop-ups are not only annoying; they can also host embedded malware directly or lure users into clicking links using social engineering tricks. To help enforce blocking of known malicious domains, also consider subscribing to DNS filtering services to block attempts to access these websites at the network level.

Email

Email represents one the most interactive ways humans work with enterprise assets; training and encouraging the right behaviour is just as important as the technical settings. Email is the most common threat vector against enterprises through tactics such as phishing and Business Email Compromise (BEC).

Using a spam-filtering tool and malware scanning at the email gateway reduces the number of malicious emails and attachments that come into the enterprise's network. Initiating Domain-based Message Authentication, Reporting and Conformance (DMARC) helps reduce spam and phishing activities. Installing an encryption tool to secure email and communications adds another layer of user and network-based security. In addition to blocking based on the sender, it is also worthwhile to only allow certain file types that users need for their jobs. This will require coordination with different business units to understand what types of files they receive via email to ensure that there is not an interruption to their processes.

Since phishing email techniques are ever evolving to get past Something Posing as Mail (SPAM) filter rules, it is important to train users on how to identify phishing, and to notify IT Security when they see one. There are many platforms that perform phishing tests against users to help educate them on different examples, and track their improvement over time. Crowd-sourcing this knowledge into notifying IT Security teams of phishing helps improve the protections and detections of email-based threats.

Safeguards

Safeguard	Asset Type	Security Function	Safeguard Title	Safeguard Description	IG1	IG2	IG3
9.1	Applications	Protect	Ensure Use of Only Fully Supported Browsers and Email Clients	Ensure only fully supported browsers and email clients are allowed to execute in the enterprise, only using the latest version of browsers and email clients provided through the vendor.	x	x	x
9.2	Network	Protect	Use DNS Filtering Services	Use DNS filtering services on all enterprise assets to block access to known malicious domains.	x	x	x
9.3	Network	Protect	Maintain and Enforce Network-Based URL Filters	Enforce and update network-based URL filters to limit an enterprise asset from connecting to potentially malicious or unapproved websites. Example implementations include category-based filtering, reputation-based filtering, or through the use of block lists. Enforce filters for all enterprise assets.		x	x
9.4	Applications	Protect	Restrict Unnecessary or Unauthorized Browser and Email Client Extensions	Restrict, either through uninstalling or disabling, any unauthorized or unnecessary browser or email client plugins, extensions, and add-on applications.		x	x
9.5	Network	Protect	Implement DMARC	To lower the chance of spoofed or modified emails from valid domains, implement DMARC policy and verification, starting with implementing the Sender Policy Framework (SPF) and the DomainKeys Identified Mail (DKIM) standards.		x	x
9.6	Network	Protect	Block Unnecessary File Types	Block unnecessary file types attempting to enter the enterprise's email gateway.		x	x
9.7	Network	Protect	Deploy and Maintain Email Server Anti-Malware Protections	Deploy and maintain email server anti-malware protections, such as attachment scanning and/or sandboxing.			x

4.10 Control 10: Malware Defences

Prevent or control the installation, spread, and execution of malicious applications, code, or scripts on enterprise assets.

Why Is This Control Critical?

Malicious software (sometimes categorized as viruses or Trojans) is an integral and dangerous aspect of internet threats. They can have many purposes, from capturing credentials, stealing data, identifying other targets within the network, and encrypting or destroying data. Malware is ever-evolving and adaptive, as modern variants leverage machine learning techniques.

Malware enters an enterprise through vulnerabilities within the enterprise on end-user devices, email attachments, webpages, cloud services, mobile devices, and removable media. Malware often relies on insecure end-user behaviour, such as clicking links, opening attachments, installing software or profiles, or inserting Universal Serial Bus (USB) flash drives. Modern malware is designed to avoid, deceive, or disable defences.

Malware defences should be able to operate in this dynamic environment through automation, timely and rapid updating, and integration with other processes like vulnerability management and incident response. They should be deployed at all possible entry points and enterprise assets to detect, prevent spread, or control the execution of malicious software or code.

Procedures and Tools

Effective malware protection includes traditional endpoint malware prevention and detection suites. To ensure malware IOCs are up-to-date, enterprises can receive automated updates from the vendor to enrich other vulnerability or threat data. These tools are best managed centrally to provide consistency across the infrastructure.

Being able to block or identify malware is only part of this Control; there is also a focus on centrally collecting the logs to support alerting, identification, and incident response. As malicious actors continue to develop their methodologies, many are starting to take a "Living off the-Land" (LotL) approach to minimize the likelihood of being caught. This approach refers to attacker behaviour that uses tools or features that already exist in the target environment. Enabling logging, as per the Safeguards in Control 8, will make it significantly easier for the enterprise to follow the events to understand what happened and why it happened.

Safeguards

Safeguard	Asset Type	Security Function	Safeguard Title	Safeguard Description	IG1	IG2	IG3
10.1	Devices	Protect	Deploy and Maintain Anti-Malware Software	Deploy and maintain anti-malware software on all enterprise assets.	x	x	x
10.2	Devices	Protect	Configure Automatic Anti-Malware Signature Updates	Configure automatic updates for anti-malware signature files on all enterprise assets.	x	x	x
10.3	Devices	Protect	Disable Autorun and Autoplay for Removable Media	Disable autorun and autoplay auto-execute functionality for removable media.	x	x	x
10.4	Devices	Detect	Configure Automatic Anti-Malware Scanning of Removable Media	Configure anti-malware software to automatically scan removable media.		x	x
10.5	Devices	Protect	Enable Anti-Exploitation Features	Enable anti-exploitation features on enterprise assets and software, where possible.		x	x
10.6	Devices	Protect	Centrally Manage Anti-Malware Software	Centrally manage anti-malware software.		x	x
10.7	Devices	Detect	Use Behaviour-Based Anti-Malware Software	Use behaviour-based anti-malware software.		x	x

4.11 Control 11: Data Recovery

Establish and maintain data recovery practices sufficient to restore in-scope enterprise assets to a pre-incident and trusted state.

Why Is This Control Critical?

In the cybersecurity triad - Confidentiality, Integrity and Availability (CIA) - the availability of data is, in some cases, more critical than its confidentiality. Enterprises need many types of data to make business decisions, and when that data is not available or is untrusted, then it could impact the enterprise. An easy example is weather information to a transportation enterprise.

When attackers compromise assets, they make changes to configurations, add accounts, and often add software or scripts. These changes are not always easy to identify, as attackers might have corrupted or replaced trusted applications with malicious versions, or the changes might appear to be standard-looking account names. Configuration changes can include adding or changing registry entries, opening ports, turning off security services, deleting logs, or other malicious actions that make a system insecure. These actions do not have to be malicious; human error can cause each of these as well. Therefore, it is important to have an ability to have recent backups or mirrors to recover enterprise assets and data back to a known trusted state.

There has been an exponential rise in ransomware over the last few years. It is not a new threat, though it has become more commercialized and organized as a reliable method for attackers to make money. If an attacker encrypts an enterprise's data and demands ransom for its restoration, having a recent backup to recover to a known, trusted state can be helpful. However, as ransomware has evolved, it has also become an extortion technique, where data is exfiltrated before being encrypted, and the attacker asks for payment to restore the enterprise's data, as well as to keep it from being sold or publicized. In this case, restoration would only solve the issue of restoring systems to a trusted state and continuing operations. Leveraging the guidance within the CSC will help reduce the risk of ransomware through improved cyber hygiene, as attackers usually use older or basic exploits on insecure systems.

Procedures and Tools

Data recovery procedures should be defined in the data management process described in Control 3, Data Protection. This should include backup procedures based on data value, sensitivity, or retention requirements. This will assist in developing backup frequency and type (full vs. incremental).

Once per quarter (or whenever a new backup process or technology is introduced), a testing team should evaluate a random sampling of backups and attempt to restore them on a test bed environment. The restored backups should be verified to ensure that the operating system, application, and data from the backup are all intact and functional.

In the event of malware infection, restoration procedures should use a version of the backup that is believed to predate the original infection.

Safeguards

Safeguard	Asset Type	Security Function	Safeguard Title	Safeguard Description	IG1	IG2	IG3
11.1	Data	Recover	Establish and Maintain a Data Recovery Process	Establish and maintain a data recovery process. In the process, address the scope of data recovery activities, recovery prioritization, and the security of backup data. Review and update documentation annually, or when significant enterprise changes occur that could impact this Safeguard.	x	x	x
11.2	Data	Recover	Perform Automated Backups	Perform automated backups of in-scope enterprise assets. Run backups weekly, or more frequently, based on the sensitivity of the data.	x	x	x
11.3	Data	Protect	Protect Recovery Data	Protect recovery data with equivalent controls to the original data. Reference encryption or data separation, based on requirements.	x	x	x
11.4	Data	Recover	Establish and Maintain an Isolated Instance of Recovery Data	Establish and maintain an isolated instance of recovery data. Example implementations include version controlling backup destinations through offline, cloud, or off-site systems or services.	x	x	x

Safeguard	Asset Type	Security Function	Safeguard Title	Safeguard Description	IG1	IG2	IG3
11.5	Data	Recover	Test Data Recovery	Test backup recovery quarterly, or more frequently, for a sampling of in-scope enterprise assets.		x	x

4.12 Control 12: Network Infrastructure Management

Establish, implement, and actively manage (track, report, correct) network devices, in order to prevent attackers from exploiting vulnerable network services and access points.

Why Is This Control Critical?

Attackers focus on exploiting systems that they can reach across the Internet, including not only DMZ systems but also secure network infrastructure is an essential defence against attacks. This includes an appropriate security architecture, addressing vulnerabilities that are, often, introduced with default settings, monitoring for changes, and reassessment of current configurations. Network infrastructure includes devices such as physical and virtualized gateways, firewalls, wireless access points, routers, and switches.

Default configurations for network devices are geared for ease-of-deployment and ease-of-use - not security. Potential default vulnerabilities include open services and ports, default accounts and passwords (including service accounts), support for older vulnerable protocols, and pre-installation of unneeded software. Attackers search for vulnerable default settings, gaps or inconsistencies in firewall rule sets, routers, and switches and use those holes to penetrate defences. They exploit flaws in these devices to gain access to networks, redirect traffic on a network, and intercept data while in transmission.

Network security is a constantly changing environment that necessitates regular re-evaluation of architecture diagrams, configurations, access controls, and allowed traffic flows. Attackers take advantage of network device configurations becoming less secure over time as users demand exceptions for specific business needs. Sometimes the exceptions are deployed, but not removed when they are no longer applicable to the business's needs. In some cases, the security risk of an exception is neither properly analysed nor measured against the associated business need and can change over time.

Procedures and Tools

Enterprises should ensure network infrastructure is fully documented and architecture diagrams are kept up-to-date. It is important for key infrastructure components to have vendor support for patches and feature upgrades. Upgrade End-Of-Life (EOL) components before the date they will be out of support or apply mitigating controls to isolate them. Enterprises need to monitor their infrastructure versions and configurations for vulnerabilities that would require them to upgrade the network devices to the latest secure and stable version that does not impact the infrastructure.

An up-to-date network architecture diagram, including security architecture diagrams, are an important foundation for infrastructure management. Next is having complete account management for access control, logging, and monitoring. Finally, infrastructure administration should only be performed over secure protocols, with strong authentication (MFA for PAM), and from dedicated administrative devices or out-of-band networks.

Commercial tools can be helpful to evaluate the rule sets of network filtering devices to determine whether they are consistent or in conflict. This provides an automated sanity check of network filters. These tools search for errors in rule sets or Access Controls Lists (ACLs) that may allow unintended services through the network device. Such tools should be run each time significant changes are made to firewall rule sets, router ACLs, or other filtering technologies.

Safeguards

Safeguard	Asset Type	Security Function	Safeguard Title	Safeguard Description	IG1	IG2	IG3
12.1	Network	Protect	Ensure Network Infrastructure is Up-to-Date	Ensure network infrastructure is kept up-to-date. Example implementations include running the latest stable release of software and/or using currently supported Network as a Service (NaaS) offerings. Review software versions monthly, or more frequently, to verify software support.	x	x	x
12.2	Network	Protect	Establish and Maintain a Secure Network Architecture	Establish and maintain a secure network architecture. A secure network architecture should address segmentation, least privilege, and availability, at a minimum.		x	x
12.3	Network	Protect	Securely Manage Network Infrastructure	Securely manage network infrastructure. Example implementations include version-controlled-infrastructure-as-code, and the use of secure network protocols, such as SSH and HTTPS.		x	x
12.4	Network	Identify	Establish and Maintain Architecture Diagram(s)	Establish and maintain architecture diagram(s) and/or other network system documentation. Review and update documentation annually, or when significant enterprise changes occur that could impact this Safeguard.		x	x
12.5	Network	Protect	Centralize Network Authentication, Authorization, and Auditing (AAA)	Centralize network AAA.		x	x
12.6	Network	Protect	Use of Secure Network Management and Communication Protocols	Use secure network management and communication protocols (e.g. 802.1X [i.3] Wi-Fi Protected Access 2 (WPA2) Enterprise or greater).		x	x
12.7	Devices	Protect	Ensure Remote Devices Utilize a VPN and are Connecting to an Enterprise's AAA Infrastructure	Require users to authenticate to enterprise-managed VPN and authentication services prior to accessing enterprise resources on end-user devices.		x	x
12.8	Devices	Protect	Establish and Maintain Dedicated Computing Resources for All Administrative Work	Establish and maintain dedicated computing resources, either physically or logically separated, for all administrative tasks or tasks requiring administrative access. The computing resources should be segmented from the enterprise's primary network and not be allowed internet access.			x

4.13 Control 13: Network Monitoring and Defence

Operate processes and tooling to establish and maintain comprehensive network monitoring and defence against security threats across the enterprise's network infrastructure and user base.

Why Is This Control Critical?

Network defences are not perfect. Adversaries continue to evolve and mature, as they share, or sell, information among their community on exploits and bypasses to security controls. Even if security tools work "as advertised", it takes an understanding of the enterprise risk posture to configure, tune, and log them to be effective. Often, misconfigurations due to human error or lack of knowledge of tool capabilities give enterprises a false sense of security.

Security tools can only be effective if they are supporting a process of continuous monitoring that allows staff the ability to be alerted and respond to security incidents quickly. Enterprises that adopt a purely technology-driven approach will also experience more false positives, due to their over-reliance on alerts from tools. Identifying and responding to these threats requires visibility into all threat vectors of the infrastructure and leveraging humans in the process of detection, analysis, and response. It is critical for large or heavily targeted enterprises to have a security operations capability to prevent, detect, and quickly respond to cyber threats before they can impact the enterprise. This process will generate activity reports and metrics that will help enhance security policies, and support regulatory compliance for many enterprises.

As has been seen many times in the press, enterprises have been compromised for weeks, months, or years before discovery. The primary benefit of having comprehensive situational awareness is to increase the speed of detection and response. This is critical to respond quickly when malware is discovered, credentials are stolen, or when sensitive data is compromised to reduce impact to the enterprise.

Through good situational awareness (i.e. security operations), enterprises will identify and catalogue Tactics, Techniques and Procedures (TTPs) of attackers, including their IOCs that will help the enterprise become more proactive in identifying future threats or incidents. Recovery can be achieved faster when the response has access to complete information about the environment and enterprise structure to develop efficient response strategies.

Procedures and Tools

Most enterprises do not need to stand up a Security Operations Center (SOC) to gain situational awareness. This starts with first understanding critical business functions, network and server architectures, data and data flows, vendor service and business partner connection, and end-user devices and accounts. This informs the development of a security architecture, technical controls, logging, monitoring, and response procedures.

At the core of this process is a trained and organized team that implements processes for incident detection, analysis, and mitigation. These capabilities could be conducted internally, or through consultants or a managed service provider. Enterprises should consider network, enterprise asset, user credential, and data access activities. Technology will play a crucial role to collect and analyse all of the data, and monitor networks and enterprise assets internally and externally to the enterprise. Enterprises should include visibility to cloud platforms that might not be in line with on-premises security technology.

Forwarding all important logs to analytical programs, such as Security Information and Event Management (SIEM) solutions, can provide value; however, they do not provide a complete picture. Weekly log reviews are necessary to tune thresholds and identify abnormal events. Correlation tools can make audit logs more useful for subsequent manual inspection. These tools are not a replacement for skilled information security personnel and system administrators. Even with automated log analysis tools, human expertise and intuition are often required to identify and understand attacks.

As this process matures, enterprises will create, maintain, and evolve a knowledge base that will help to understand and assess the business risks, developing an internal threat intelligence capability. Threat intelligence is the collection of TTPs from incidents and adversaries. To accomplish this, a situational awareness program will define and evaluate which information sources are relevant to detect, report, and handle attacks. Most mature enterprises can evolve to threat hunting, where trained staff manually review system and user logs, data flows, and traffic patterns to find anomalies.

Safeguards

Safeguard	Asset Type	Security Function	Safeguard Title	Safeguard Description	IG1	IG2	IG3
13.1	Network	Detect	Centralize Security Event Alerting	Centralize security event alerting across enterprise assets for log correlation and analysis. Best practice implementation implies the use of a SIEM, which includes vendor-defined event correlation alerts. A log analytics platform configured with security-relevant correlation alerts also satisfies this Safeguard.		x	x
13.2	Devices	Detect	Deploy a Host-Based Intrusion Detection Solution	Deploy a host-based intrusion detection solution on enterprise assets, where appropriate and/or supported.		x	x

Safeguard	Asset Type	Security Function	Safeguard Title	Safeguard Description	IG1	IG2	IG3
13.3	Network	Detect	Deploy a Network Intrusion Detection Solution	Deploy a network intrusion detection solution on enterprise assets, where appropriate. Example implementations include the use of a Network Intrusion Detection System (NIDS) or equivalent Cloud Service Provider (CSP) service.		x	x
13.4	Network	Protect	Perform Traffic Filtering Between Network Segments	Perform traffic filtering between network segments, where appropriate.		x	x
13.5	Devices	Protect	Manage Access Control for Remote Assets	Manage access control for assets remotely connecting to enterprise resources. Determine amount of access to enterprise resources based on: up-to-date anti-malware software installed, configuration compliance with the enterprise's secure configuration process, and ensuring the operating system and applications are up-to-date.		x	x
13.6	Network	Detect	Collect Network Traffic Flow Logs	Collect network traffic flow logs and/or network traffic to review and alert upon from network devices.		x	x
13.7	Devices	Protect	Deploy a Host-Based Intrusion Prevention Solution	Deploy a host-based intrusion prevention solution on enterprise assets, where appropriate and/or supported. Example implementations include use of an Endpoint Detection and Response (EDR) client or host-based IPS agent.			x
13.8	Network	Protect	Deploy a Network Intrusion Prevention Solution	Deploy a network intrusion prevention solution, where appropriate. Example implementations include the use of a Network Intrusion Prevention System (NIPS) or equivalent CSP service.			x
13.9	Devices	Protect	Deploy Port-Level Access Control	Deploy port-level access control. Port-level access control utilizes 802.1X [i.3], or similar network access control protocols, such as certificates, and can incorporate user and/or device authentication.			x
13.10	Network	Protect	Perform Application Layer Filtering	Perform application layer filtering. Example implementations include a filtering proxy, application layer firewall, or gateway.			x
13.11	Network	Detect	Tune Security Event Alerting Thresholds	Tune security event alerting thresholds monthly, or more frequently.			x

4.14 Control 14: Security Awareness and Skills Training

Establish and maintain a security awareness program to influence behaviour among the workforce to be security conscious and properly skilled to reduce cybersecurity risks to the enterprise.

Why Is This Control Critical?

The actions of people play a critical part in the success or failure of an enterprise's security program. It is easier for an attacker to entice a user to click a link or open an email attachment to install malware in order to get into an enterprise, than to find a network exploit to do it directly.

Users themselves, both intentionally and unintentionally, can cause incidents as a result of mishandling sensitive data, sending an email with sensitive data to the wrong recipient, losing a portable end-user device, using weak passwords, or using the same password they use on public sites.

No security program can effectively address cyber risk without a means to address this fundamental human vulnerability. Users at every level of the enterprise have different risks. For example: executives manage more sensitive data; system administrators have the ability to control access to systems and applications; and users in finance, human resources, and contracts all have access to different types of sensitive data that can make them targets.

The training should be updated regularly. This will increase the culture of security and discourage risky workarounds.

Procedures and Tools

An effective security awareness training program should not just be a canned, once-a-year training video coupled with regular phishing testing. While annual training is needed, there should also be more frequent, topical messages and notifications about security. This might include messages about: strong password-use that coincides with a media report of password dump, the rise of phishing during tax time, or increased awareness of malicious package delivery emails during the holidays.

Training should also consider the enterprise's different regulatory and threat posture. Financial firms might have more compliance-related training on data handling and use, healthcare enterprises on handling healthcare data, and merchants for credit card data.

Social engineering training, such as phishing tests, should also include awareness of tactics that target different roles. For example, the financial team will receive BEC attempts posing as executives asking to wire money, or receive emails from compromised partners or vendors asking to change the bank account information for their next payment. A variety of resources are available for building an effective security awareness programme [i.6], [i.7], [i.8], [i.9] and [i.17].

Safeguards

Safeguard	Asset Type	Security Function	Safeguard Title	Safeguard Description	IG1	IG2	IG3
14.1		Protect	Establish and Maintain a Security Awareness Program	Establish and maintain a security awareness program. The purpose of a security awareness program is to educate the enterprise's workforce on how to interact with enterprise assets and data in a secure manner. Conduct training at hire and, at a minimum, annually. Review and update content annually, or when significant enterprise changes occur that could impact this Safeguard.	x	x	x
14.2		Protect	Train Workforce Members to Recognize Social Engineering Attacks	Train workforce members to recognize social engineering attacks, such as phishing, pre-texting, and tailgating.	x	x	x
14.3		Protect	Train Workforce Members on Authentication Best Practices	Train workforce members on authentication best practices. Example topics include MFA, password composition, and credential management.	x	x	x
14.4		Protect	Train Workforce on Data Handling Best Practices	Train workforce members on how to identify and properly store, transfer, archive, and destroy sensitive data. This also includes training workforce members on clear screen and desk best practices, such as locking their screen when they step away from their enterprise asset, erasing physical and virtual whiteboards at the end of meetings, and storing data and assets securely.	x	x	x
14.5		Protect	Train Workforce Members on Causes of Unintentional Data Exposure	Train workforce members to be aware of causes for unintentional data exposure. Example topics include mis-delivery of sensitive data, losing a portable end-user device, or publishing data to unintended audiences.	x	x	x

Safeguard	Asset Type	Security Function	Safeguard Title	Safeguard Description	IG1	IG2	IG3
14.6		Protect	Train Workforce Members on Recognizing and Reporting Security Incidents	Train workforce members to be able to recognize a potential incident and be able to report such an incident.	x	x	x
14.7		Protect	Train Workforce on How to Identify and Report if Their Enterprise Assets are Missing Security Updates	Train workforce to understand how to verify and report out-of-date software patches or any failures in automated processes and tools. Part of this training should include notifying IT personnel of any failures in automated processes and tools.	x	x	x
14.8		Protect	Train Workforce on the Dangers of Connecting to and Transmitting Enterprise Data Over Insecure Networks	Train workforce members on the dangers of connecting to, and transmitting data over, insecure networks for enterprise activities. If the enterprise has remote workers, training should include guidance to ensure that all users securely configure their home network infrastructure.	x	x	x
14.9		Protect	Conduct Role-Specific Security Awareness and Skills Training	Conduct role-specific security awareness and skills training. Example implementations include secure system administration courses for IT professionals, (OWASP® Top 10 vulnerability awareness and prevention training for web application developers, and advanced social engineering awareness training for high-profile roles.		x	x

4.15 Control 15: Service Provider Management

Develop a process to evaluate service providers who hold sensitive data, or are responsible for an enterprise's critical IT platforms or processes, to ensure these providers are protecting those platforms and data appropriately.

Why Is This Control Critical?

In our modern, connected world, enterprises rely on vendors and partners to help manage their data or rely on third-party infrastructure for core applications or functions.

There have been numerous examples where third-party breaches have significantly impacted an enterprise; for example, as early as the late 2000s, payment cards were compromised after attackers infiltrated smaller third-party vendors in the retail industry. More recent examples include ransomware attacks that impact an enterprise indirectly, due to one of their service providers being locked down, causing disruption to business. Or worse, if directly connected, a ransomware attack could encrypt data on the main enterprise.

Most data security and privacy regulations require their protection extend to third-party service providers. While reviewing the security of third parties has been a task performed for decades, there is not a universal standard for assessing security; and, many service providers are being audited by their customers multiple times a month, causing impacts to their own productivity. This is because every enterprise has a different "checklist" or set of standards to grade the service provider.

While an enterprise might put a lot of scrutiny into large cloud or application hosting companies because they are hosting their email or critical business applications, smaller firms are often a greater risk. Often, a third-party service provider contracts with additional parties to provide other plugins or services, such as when a third-party uses a fourth-party platform or product to support the main enterprise.

Procedures and Tools

Most enterprises have traditionally used standard checklists, such as ones from ISO or the Critical Security Controls. Often, this process is managed through spreadsheets; however, there are online platforms now that allow central management of this process. The focus of this Control though is not on the checklist; instead it is on the fundamentals of the program. Make sure to revisit annually, as relationships and data may change.

No matter what the enterprise's size is, there should be a policy about reviewing service providers, an inventory of these vendors, and a risk rating associated with their potential impact to the business in case of an incident. There should also be language in the contracts to hold them accountable if there is an incident that impacts the enterprise.

There are third-party assessment platforms that have an inventory of thousands of service providers, which attempt to provide a central view of the industry, to help enterprises make more informed risk decisions. These platforms often have a dynamic risk score for service providers, based (usually) on passive technical assessments, or enriched through other firms' third-party assessments.

When performing reviews, focus on the services or departments of the provider that are supporting the enterprise. A third-party that has a managed security service contract, or retainer, and holds cybersecurity insurance, can also help with risk reduction.

It is also important to securely decommission service providers when contracts are completed or terminated. Decommission activities may include user and service account deactivation, termination of data flows, and secure disposal of enterprise data within service provider systems.

Safeguards

Safeguard	Asset Type	Security Function	Safeguard Title	Safeguard Description	IG1	IG2	IG3
15.1		Identify	Establish and Maintain an Inventory of Service Providers	Establish and maintain an inventory of service providers. The inventory is to list all known service providers, include classification(s), and designate an enterprise contact for each service provider. Review and update the inventory annually, or when significant enterprise changes occur that could impact this Safeguard.	x	x	x
15.2		Identify	Establish and Maintain a Service Provider Management Policy	Establish and maintain a service provider management policy. Ensure the policy addresses the classification, inventory, assessment, monitoring, and decommissioning of service providers. Review and update the policy annually, or when significant enterprise changes occur that could impact this Safeguard.		x	x
15.3		Identify	Classify Service Providers	Classify service providers. Classification consideration may include one or more characteristics, such as data sensitivity, data volume, availability requirements, applicable regulations, inherent risk, and mitigated risk. Update and review classifications annually, or when significant enterprise changes occur that could impact this Safeguard.		x	x
15.4		Protect	Ensure Service Provider Contracts Include Security Requirements	Ensure service provider contracts include security requirements. Example requirements may include minimum security program requirements, security incident and/or data breach notification and response, data encryption requirements, and data disposal commitments. These security requirements should be consistent with the enterprise's service provider management policy. Review service provider contracts annually to ensure contracts are not missing security requirements.		x	x

Safeguard	Asset Type	Security Function	Safeguard Title	Safeguard Description	IG1	IG2	IG3
15.5		Identify	Assess Service Providers	Assess service providers are consistent with the enterprise's service provider management policy. Assessment scope may vary based on classification(s), and may include review of standardized assessment reports, such as Service Organization Control 2 (SOC 2) and Payment Card Industry (PCI) Attestation of Compliance (AoC), customized questionnaires, or other appropriately rigorous processes. Reassess service providers annually, at a minimum, or with new and renewed contracts.			x
15.6	Data	Detect	Monitor Service Providers	Monitor service providers are consistent with the enterprise's service provider management policy. Monitoring may include periodic reassessment of service provider compliance, monitoring service provider release notes, and dark web monitoring.			x
15.7	Data	Protect	Securely Decommission Service Providers	Securely decommission service providers. Example considerations include user and service account deactivation, termination of data flows, and secure disposal of enterprise data within service provider systems.			x

4.16 Control 16: Application Software Security

Manage the security life cycle of in-house developed, hosted, or acquired software to prevent, detect, and remediate security weaknesses before they can impact the enterprise.

Why Is This Control Critical?

Applications provide a human-friendly interface to allow users to access and manage data in a way that is aligned to business functions. They also minimize the need for users to deal directly with complex (and potentially error-prone) system functions, like logging into a database to insert or modify files. Enterprises use applications to manage their most sensitive data and control access to system resources. Therefore, an attacker can use the application itself to compromise the data, instead of an elaborate network and system hacking sequence that attempts to bypass network security controls and sensors. This is why protecting user credentials (specifically application credentials) defined in Control 6 is so important.

Lacking credentials, application flaws are the attack vector of choice. However, today's applications are developed, operated, and maintained in a highly complex, diverse, and dynamic environment. Applications run on multiple platforms: web, mobile, cloud, etc., with application architectures that are more complex than legacy client-server or database-web server structures. Development life cycles have become shorter, transitioning from months or years in long waterfall methodologies, to DevOps cycles with frequent code updates. Also, applications are rarely created from scratch, and are often "assembled" from a complex mix of development frameworks, libraries, existing code, and new code. There are also modern and evolving data protection regulations dealing with user privacy. These can require compliance to regional or sector-specific data protection requirements.

These factors make traditional approaches to security, like control (of processes, code sources, run-time environment, etc.), inspection, and testing, much more challenging. Also, the risk that an application vulnerability introduces might not be understood, except in a specific operational setting or context.

Application vulnerabilities can be present for many reasons: insecure design, insecure infrastructure, coding mistakes, weak authentication, and failure to test for unusual or unexpected conditions. Attackers can exploit specific vulnerabilities, including buffer overflows, exposure to Structured Query Language (SQL) injection, cross-site scripting, cross-site request forgery, and click-jacking of code to gain access to sensitive data, or take control over vulnerable assets within the infrastructure as a launching point for further attacks.

Applications and websites can also be used to harvest credentials, data, or attempt to install malware onto the users who access them.

Finally, it is now more common to acquire Software as a Service (SaaS) platforms, where software is developed and managed entirely through a third-party. These might be hosted anywhere in the world. This brings challenges to enterprises that need to know what risks they are accepting with using these platforms; and, they often do not have visibility into the development and application security practices of these platforms. Some of these SaaS platforms allow for customizing of their interfaces and databases. Enterprises that extend these applications should follow this Control, similar to if they were doing ground-up customer development.

Procedures and Tools

Application software security is a large topic on its own, and so (consistent with the principles of the overall CSC), the focus here is on the most critical Safeguards. The three CSC IG levels were used for the DGs below:

Development Group 1

The enterprise largely relies on off-the-shelf or Open Source Software (OSS) and packages with only the occasional addition of small applications or website coding. The enterprise is capable of applying basic operational and procedural best practices and of managing the security of its vendor-supplied software as a result of following the guidance of the CSC.

Development Group 2

The enterprise relies on some custom (in-house or contractor-developed) web and/or native code applications integrated with third-party components and runs on-premises or in the cloud. The enterprise has a development staff that applies software development best practices. The enterprise is attentive to the quality and maintenance of third-party open source or commercial code on which it depends.

Development Group 3

The enterprise makes a major investment in custom software that it requires to run its business and serve its customers. It can host software on its own infrastructure, in the cloud, or both, and can integrate a large range of third-party open source and commercial software components. Software vendors and enterprises that deliver SaaS should consider Development Group 3 as a minimum set of requirements.

The first step in developing an application security program is implementing a vulnerability management process. This process should integrate into the development life cycle, and should be lightweight to insert into the standard bug-fixing progress. The process should include root cause analysis to fix underlying flaws so as to reduce future vulnerabilities, and a severity rating to prioritize remediation efforts.

Developers need to be trained in application security concepts and secure coding practices. This includes a process to acquire or evaluate third-party software, modules, and libraries used in the application to ensure they do not introduce security flaws. The developers should be taught what types of modules they can securely use, where they can be safely acquired, and which components they can, or should not, develop themselves (e.g. encryption).

Weaknesses in the infrastructure that supports these applications can introduce risk. The Critical Security Controls and the concept of minimizing the attack surface can help secure networks, systems, and accounts that are used within the application. Specific guidance can be found in Controls 1-7, 12, and 13.

The ideal application security program is one that introduces security as early into the software development life cycle as possible. The management of security problems should be consistent and integrated with standard software flaw/bug management, as opposed to a separate process that competes for development resources. Larger or more mature development teams should consider the practice of threat modelling in the design phase. Design-level vulnerabilities are less common than code-level vulnerabilities; however, they often are very severe and much harder to fix quickly. Threat modelling is the process of identifying and addressing application security design flaws before code is created. Threat modelling requires specific training, technical, and business knowledge. It is best conducted through internal "security champions" in each development team, to lead threat modelling practices for that team's software. It also provides valuable context to downstream activities, such as root cause analysis and security testing.

Larger, or commercial, development teams may also consider a bug bounty program where individuals are paid for finding flaws in their applications. Such a program is best used to supplement an in-house secure development process and can provide an efficient mechanism for identifying classes of vulnerabilities that the process needs to focus on.

Enterprises acquiring software or services should use a secure software development framework to build their security requirements and understand whether a software provider's development process follows best practices.

Safeguards

Safeguard	Asset Type	Security Function	Safeguard Title	Safeguard Description	IG1	IG2	IG3
16.1	Applications	Protect	Establish and Maintain a Secure Application Development Process	Establish and maintain a secure application development process. In the process, address such items as: secure application design standards, secure coding practices, developer training, vulnerability management, security of third-party code, and application security testing procedures. Review and update documentation annually, or when significant enterprise changes occur that could impact this Safeguard.		x	x
16.2	Applications	Protect	Establish and Maintain a Process to Accept and Address Software Vulnerabilities	Establish and maintain a process to accept and address reports of software vulnerabilities, including providing a means for external entities to report. The process is to include such items as: a vulnerability handling policy that identifies reporting process, responsible party for handling vulnerability reports, and a process for intake, assignment, remediation, and remediation testing. As part of the process, use a vulnerability tracking system that includes severity ratings, and metrics for measuring timing for identification, analysis, and remediation of vulnerabilities. Review and update documentation annually, or when significant enterprise changes occur that could impact this Safeguard. Third-party application developers need to consider this an externally-facing policy that helps to set expectations for outside stakeholders.		x	x
16.3	Applications	Protect	Perform Root Cause Analysis on Security Vulnerabilities	Perform root cause analysis on security vulnerabilities. When reviewing vulnerabilities, root cause analysis is the task of evaluating underlying issues that create vulnerabilities in code, and allows development teams to move beyond just fixing individual vulnerabilities as they arise.		x	x
16.4	Applications	Protect	Establish and Manage an Inventory of Third-Party Software Components	Establish and manage an updated inventory of third-party components used in development, often referred to as a "bill of materials", as well as components slated for future use. This inventory is to include any risks that each third-party component could pose. Evaluate the list at least monthly to identify any changes or updates to these components, and validate that the component is still supported.		x	x
16.5	Applications	Protect	Use Up-to-Date and Trusted Third-Party Software Components	Use up-to-date and trusted third-party software components. When possible, choose established and proven frameworks and libraries that provide adequate security. Acquire these components from trusted sources or evaluate the software for vulnerabilities before use.		x	x

Safeguard	Asset Type	Security Function	Safeguard Title	Safeguard Description	IG1	IG2	IG3
16.6	Applications	Protect	Establish and Maintain a Severity Rating System and Process for Application Vulnerabilities	Establish and maintain a severity rating system and process for application vulnerabilities that facilitates prioritizing the order in which discovered vulnerabilities are fixed. This process includes setting a minimum level of security acceptability for releasing code or applications. Severity ratings bring a systematic way of triaging vulnerabilities that improves risk management and helps ensure the most severe bugs are fixed first. Review and update the system and process annually.		x	x
16.7	Applications	Protect	Use Standard Hardening Configuration Templates for Application Infrastructure	Use standard, industry-recommended hardening configuration templates for application infrastructure components. This includes underlying servers, databases, and web servers, and applies to cloud containers, Platform as a Service (PaaS) components, and SaaS components. Do not allow in-house developed software to weaken configuration hardening.		x	x
16.8	Applications	Protect	Separate Production and Non-Production Systems	Maintain separate environments for production and non-production systems.		x	x
16.9	Applications	Protect	Train Developers in Application Security Concepts and Secure Coding	Ensure that all software development personnel receive training in writing secure code for their specific development environment and responsibilities. Training can include general security principles and application security standard practices. Conduct training at least annually and design in a way to promote security within the development team, and build a culture of security among the developers.		x	x
16.10	Applications	Protect	Apply Secure Design Principles in Application Architectures	Apply secure design principles in application architectures. Secure design principles include the concept of least privilege and enforcing mediation to validate every operation that the user makes, promoting the concept of "never trust user input". Examples include ensuring that explicit error checking is performed and documented for all input, including for size, data type, and acceptable ranges or formats. Secure design also means minimizing the application infrastructure attack surface, such as turning off unprotected ports and services, removing unnecessary programs and files, and renaming or removing default accounts.		x	x

Safeguard	Asset Type	Security Function	Safeguard Title	Safeguard Description	IG1	IG2	IG3
16.11	Applications	Protect	Leverage Vetted Modules or Services for Application Security Components	Leverage vetted modules or services for application security components, such as identity management, encryption, and auditing and logging. Using platform features in critical security functions will reduce developers' workload and minimize the likelihood of design or implementation errors. Modern operating systems provide effective mechanisms for identification, authentication, and authorization and make those mechanisms available to applications. Use only standardized, currently accepted, and extensively reviewed encryption algorithms. Operating systems also provide mechanisms to create and maintain secure audit logs.		x	x
16.12	Applications	Protect	Implement Code-Level Security Checks	Apply static and dynamic analysis tools within the application life cycle to verify that secure coding practices are being followed.			x
16.13	Applications	Protect	Conduct Application Penetration Testing	Conduct application penetration testing. For critical applications, authenticated penetration testing is better suited to finding business logic vulnerabilities than code scanning and automated security testing. Penetration testing relies on the skill of the tester to manually manipulate an application as an authenticated and unauthenticated user.			x
16.14	Applications	Protect	Conduct Threat Modelling	Conduct threat modelling. Threat modelling is the process of identifying and addressing application security design flaws within a design, before code is created. It is conducted through specially trained individuals who evaluate the application design and gauge security risks for each entry point and access level. The goal is to map out the application, architecture, and infrastructure in a structured way to understand its weaknesses.			x

4.17 Control 17: Incident Response Management

Establish a program to develop and maintain an incident response capability (e.g. policies, plans, procedures, defined roles, training and communications) to prepare, detect, and quickly respond to an attack.

Why Is This Control Critical?

A comprehensive cybersecurity program includes protections, detections, response, and recovery capabilities. Often, the final two get overlooked in immature enterprises, or the response technique to compromised systems is just to re-image them to original state, and move on. The primary goal of incident response is to identify threats on the enterprise, respond to them before they can spread, and remediate them before they can cause harm. Without understanding the full scope of an incident, how it happened, and what can be done to prevent it from happening again, defenders will just be in a perpetual "whack-a-mole" pattern.

Protections are not effective 100 % of the time. When an incident occurs, if an enterprise does not have a documented plan - even with good people - it is almost impossible to know the right investigative procedures, reporting, data collection, management responsibility, legal protocols, and communications strategy that will allow the enterprise to successfully understand, manage, and recover.

Along with detection, containment, and eradication, communication to stakeholders is key. If the probability of material impact due to a cyber event is to be reduced, the enterprise's leadership should know what potential impact there could be, so that they can help prioritize remediation or restoration decisions that best support the enterprise. These business decisions could be based on regulatory compliance, disclosure rules, service-level agreements with partners or customers, revenue, or mission impacts.

Dwell time from when an attack happens to when it is identified can be days, weeks, or months. The longer the attacker is in the enterprise's infrastructure, the more embedded they become and they will develop more ways to maintain persistent access for when they are eventually discovered. With the rise of ransomware, which is a stable moneymaker for attackers, this dwell time is critical, especially with modern tactics of stealing data before encrypting it for ransom.

Procedures and Tools

Even if an enterprise does not have resources to conduct incident response within an enterprise, it is still critical to have a plan. This would include the sources for protections and detections, a list of who to call upon for assistance, and communication plans about how to convey information to leadership, employees, regulators, partners, and customers.

After defining incident response procedures, the incident response team, or a third-party, should engage in periodic scenario-based training, working through a series of attack scenarios fine-tuned to the threats and potential impacts the enterprise faces. These scenarios help ensure that enterprise leadership and technical team members understand their role in the incident response process to help prepare them to handle incidents. It is inevitable that exercise and training scenarios will identify gaps in plans and processes, and unexpected dependencies, which can then be updated into the plan.

More mature enterprises should include threat intelligence and/or threat hunting into their incident response process. This will help the team become more proactive, identifying key or primary attackers to their enterprise or industry to monitor or search for their TTPs. This will help focus detections and define response procedures to identify and remediate more quickly.

The actions in Control 17 provide specific, high-priority steps that can improve enterprise security, and should be a part of any comprehensive incident and response plan. Dedicated security testing should be used [i.11].

Safeguards

Safeguard	Asset Type	Security Function	Safeguard Title	Safeguard Description	IG1	IG2	IG3
17.1		Respond	Designate Personnel to Manage Incident Handling	Designate one key person, and at least one backup, who will manage the enterprise's incident handling process. Management personnel are responsible for the coordination and documentation of incident response and recovery efforts and can consist of employees internal to the enterprise, third-party vendors, or a hybrid approach. If using a third-party vendor, designate at least one person internal to the enterprise to oversee any third-party work. Review annually, or when significant enterprise changes occur that could impact this Safeguard.	x	x	x
17.2		Respond	Establish and Maintain Contact Information for Reporting Security Incidents	Establish and maintain contact information for parties that need to be informed of security incidents. Contacts may include internal staff, third-party vendors, law enforcement, cyber insurance providers, relevant government agencies, Information Sharing and Analysis Center (ISAC) partners, or other stakeholders. Verify contacts annually to ensure that information is up-to-date.	x	x	x

Safeguard	Asset Type	Security Function	Safeguard Title	Safeguard Description	IG1	IG2	IG3
17.3		Respond	Establish and Maintain an Enterprise Process for Reporting Incidents	Establish and maintain an enterprise process for the workforce to report security incidents. The process includes reporting timeframe, personnel to report to, mechanism for reporting, and the minimum information to be reported. Ensure the process is publicly available to all of the workforce. Review annually, or when significant enterprise changes occur that could impact this Safeguard.	x	x	x
17.4		Respond	Establish and Maintain an Incident Response Process	Establish and maintain an incident response process that addresses roles and responsibilities, compliance requirements, and a communication plan. Review annually, or when significant enterprise changes occur that could impact this Safeguard.		x	x
17.5		Respond	Assign Key Roles and Responsibilities	Assign key roles and responsibilities for incident response, including staff from legal, IT, information security, facilities, public relations, human resources, incident responders, and analysts, as applicable. Review annually, or when significant enterprise changes occur that could impact this Safeguard.		x	x
17.6		Respond	Define Mechanisms for Communicating During Incident Response	Determine which primary and secondary mechanisms will be used to communicate and report during a security incident. Mechanisms can include phone calls, emails, or letters. Keep in mind that certain mechanisms, such as emails, can be affected during a security incident. Review annually, or when significant enterprise changes occur that could impact this Safeguard.		x	x
17.7		Recover	Conduct Routine Incident Response Exercises	Plan and conduct routine incident response exercises and scenarios for key personnel involved in the incident response process to prepare for responding to real-world incidents. Exercises need to test communication channels, decision-making, and workflows. Conduct testing on an annual basis, at a minimum.		x	x
17.8		Recover	Conduct Post-Incident Reviews	Conduct post-incident reviews. Post-incident reviews help prevent incident recurrence through identifying lessons learned and follow-up action.		x	x
17.9		Recover	Establish and Maintain Security Incident Thresholds	Establish and maintain security incident thresholds, including, at a minimum, differentiating between an incident and an event. Examples can include: abnormal activity, security vulnerability, security weakness, data breach, privacy incident, etc. Review annually, or when significant enterprise changes occur that could impact this Safeguard.			x

4.18 Control 18: Penetration Testing

Test the effectiveness and resiliency of enterprise assets through identifying and exploiting weaknesses in controls (people, processes, and technology), and simulating the objectives and actions of an attacker.

Why Is This Control Critical?

A successful defensive posture requires a comprehensive program of effective policies and governance, strong technical defences, combined with appropriate action from people. However, it is rarely perfect. In a complex environment where technology is constantly evolving and new attacker tradecraft appears regularly, enterprises should periodically test their controls to identify gaps and to assess their resiliency. This test may be from external network, internal network, application, system, or device perspective. It may include social engineering of users, or physical access control bypasses.

Often, penetration tests are performed for specific purposes:

- As a "dramatic" demonstration of an attack, usually to convince decision-makers of their enterprise's weaknesses
- As a means to test the correct operation of enterprise defences ("verification")
- To test that the enterprise has built the right defences in the first place ("validation")

Independent penetration testing can provide valuable and objective insights about the existence of vulnerabilities in enterprise assets and humans, and the efficacy of defences and mitigating controls to protect against adverse impacts to the enterprise. They are part of a comprehensive, ongoing program of security management and improvement. They can also reveal process weaknesses, such as incomplete or inconsistent configuration management, or end-user training.

Penetration testing differs from vulnerability testing, described in Control 7. Vulnerability testing just checks for presence of known, insecure enterprise assets, and stops there. Penetration testing goes further to exploit those weaknesses to see how far an attacker could get, and what business process or data might be impacted through exploitation of that vulnerability. This is an important detail, and often penetration testing and vulnerability testing are incorrectly used interchangeably. Vulnerability testing is exclusively automated scanning with sometimes manual validation of false positives, whereas penetration testing requires more human involvement and analysis, sometimes supported through the use of custom tools or scripts. However, vulnerability testing is often a starting point for a penetration test.

Another common term is "Red Team" exercises. These are similar to penetration tests in that vulnerabilities are exploited; however, the difference is the focus. Red Teams simulate specific attacker TTPs to evaluate how an enterprise's environment would withstand an attack from a specific adversary, or category of adversaries.

Procedures and Tools

Penetration testing starts with the reconnaissance of the enterprise and environment, and scanning to identify the vulnerabilities that can be used as entries into the enterprise. It is important to make sure all enterprise assets are discovered that are in-scope, and not just rely on a static list, which might be outdated or incomplete. Next, vulnerabilities will be identified in these targets. Exploits to these vulnerabilities are executed to demonstrate specifically how an adversary can either subvert the enterprise's security goals (e.g. the protection of specific sensitive data) or achieve specific adversarial objectives (e.g. the establishment of a covert Command and Control (C2) infrastructure). The results provide deeper insight, through demonstration, into the business risks of various vulnerabilities. This can be against physical access controls, network, system, or application layers, and often includes social engineering components.

Penetration tests are expensive, complex, and potentially introduce their own risks. Experienced people from reputable vendors should conduct them. Some risks include unexpected shutdown of systems that might be unstable, exploits that might delete or corrupt data or configurations, and the output of a testing report that needs to be protected itself, because it gives step-by-step instructions on how to break into the enterprise to target critical assets or data.

Each enterprise should define a clear scope and rules of engagement for penetration testing. The scope of such projects should include, at a minimum, enterprise assets with the highest valued information and production processing functionality. Other lower-value systems may also be tested to see if they can be used as pivot points to compromise higher-value targets. The rules of engagement for penetration test analyses should describe, at a minimum, times of day for testing, duration of test(s), and the overall test approach. Only a few people in the enterprise should know when a penetration test is performed, and a primary point of contact in the enterprise should be designated if problems occur.

Increasingly popular recently is having penetration tests conducted through third-party legal counsel to protect the penetration test report from disclosure.

The Safeguards in this Control provide specific, high-priority steps that can improve enterprise security, and should be a part of any penetration testing. Excellent comprehensive resources dedicated to this topic to support security test planning, management, and reporting should be used [i.13] and [i.14].

Safeguards

Safeguard	Asset Type	Security Function	Safeguard Title	Safeguard Description	IG1	IG2	IG3
18.1	N/A	Identify	Establish and Maintain a Penetration Testing Program	Establish and maintain a penetration testing program appropriate to the size, complexity, and maturity of the enterprise. Penetration testing program characteristics include scope, such as network, web application, Application Programming Interface (API), hosted services, and physical premise controls; frequency; limitations, such as acceptable hours, and excluded attack types; point of contact information; remediation, such as how findings will be routed internally; and retrospective requirements.		x	x
18.2	Network	Identify	Perform Periodic External Penetration Tests	Perform periodic external penetration tests based on program requirements, no less than annually. External penetration testing should include enterprise and environmental reconnaissance to detect exploitable information. Penetration testing requires specialized skills and experience and should be conducted through a qualified party. The testing may be clear box or opaque box.		x	x
18.3	Network	Protect	Remediate Penetration Test Findings	Remediate penetration test findings based on the enterprise's policy for remediation scope and prioritization.		x	x
18.4	Network	Protect	Validate Security Measures	Validate security measures after each penetration test. If deemed necessary, modify rulesets and capabilities to detect the techniques used during testing.			x
18.5	N/A	Identify	Perform Periodic Internal Penetration Tests	Perform periodic internal penetration tests based on program requirements, no less than annually. The testing may be clear box or opaque box.			x

Annex A:

Version changes to the Controls

The transition from Version 7.1 (V3.1.1 of the present document) to Version 8.0 (the present document) of the Controls involved 225 changes at the safeguard/sub-control level. The changes can be found in substantial detail with explanations, including a spreadsheet [i.15]. A basic depiction of the restructure is shown in Table A-1 below.

Table A-1: Restructure of the Controls in Version 8

Controls v7, v7.1		Controls v8
Control 1: Inventory and Control of Hardware Assets		Control 1: Inventory and Control of Enterprise Assets
Control 2: Inventory and Control of Software Assets		Control 2: Inventory and Control of Software Assets
Control 3: Continuous Vulnerability Management		Control 3: Data Protection
Control 4: Controlled Use of Administrative Privileges		Control 4: Secure Configuration of Enterprise Assets and Software
Control 5: Secure Configuration for Hardware and Software on Mobile Devices, Laptops, Workstations and Servers		Control 5: Account Management
Control 6: Maintenance, Monitoring and Analysis of Audit Logs		Control 6: Access Control Management
Control 7: Email and Web Browser Protections		Control 7: Continuous Vulnerability Management
Control 8: Malware Defenses		Control 8: Audit Log Management
Control 9: Limitation and Control of Network Ports, Protocols, and Services		Control 9: Email and Web Browser Protections
Control 10: Data Recovery Capabilities		Control 10: Malware Defenses
Control 11: Secure Configuration for Network Devices, such as Firewalls, Routers and Switches		Control 11: Data Recovery
Control 12: Boundary Defense		Control 12: Network Infrastructure Management
Control 13: Data Protection		Control 13: Network Monitoring and Defense
Control 14: Controlled Access Based on the Need to Know		Control 14: Security Awareness and Skills Training
Control 15: Wireless Access Control		Control 15: Service Provider Management
Control 16: Account Monitoring and Control		Control 16: Application Software Security
Control 17: Implement a Security Awareness and Training Program		Control 17: Incident Response Management
Control 18: Application Software Security		Control 18: Penetration Testing
Control 19: Incident Response and Management		
Control 20: Penetration Tests and Red Team Exercises		

Annex B:

Graphical depiction of the Controls

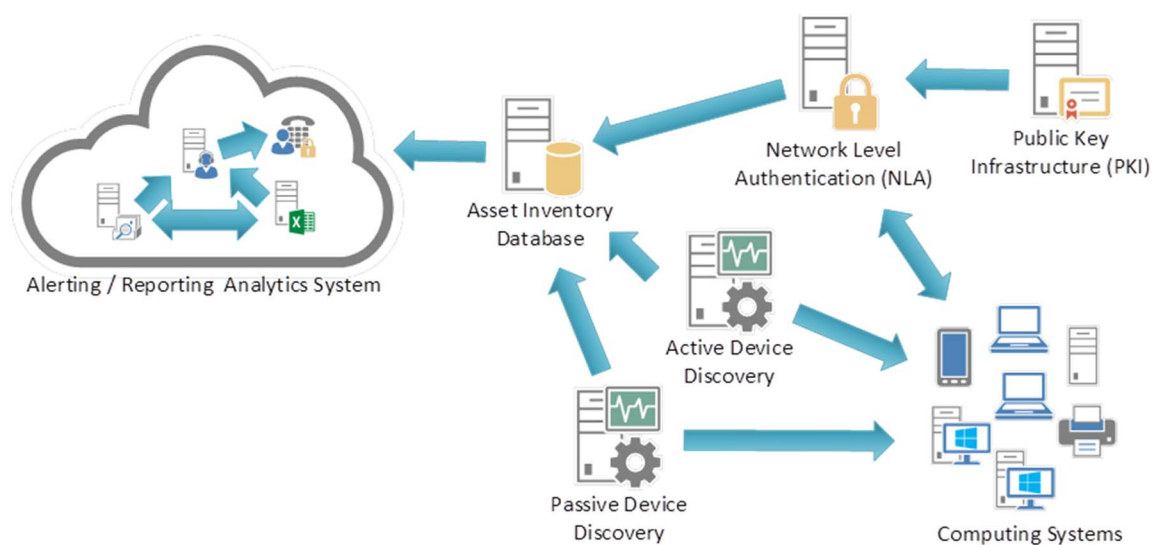


Figure B-1: Control 1: System Entity Relationship Diagram

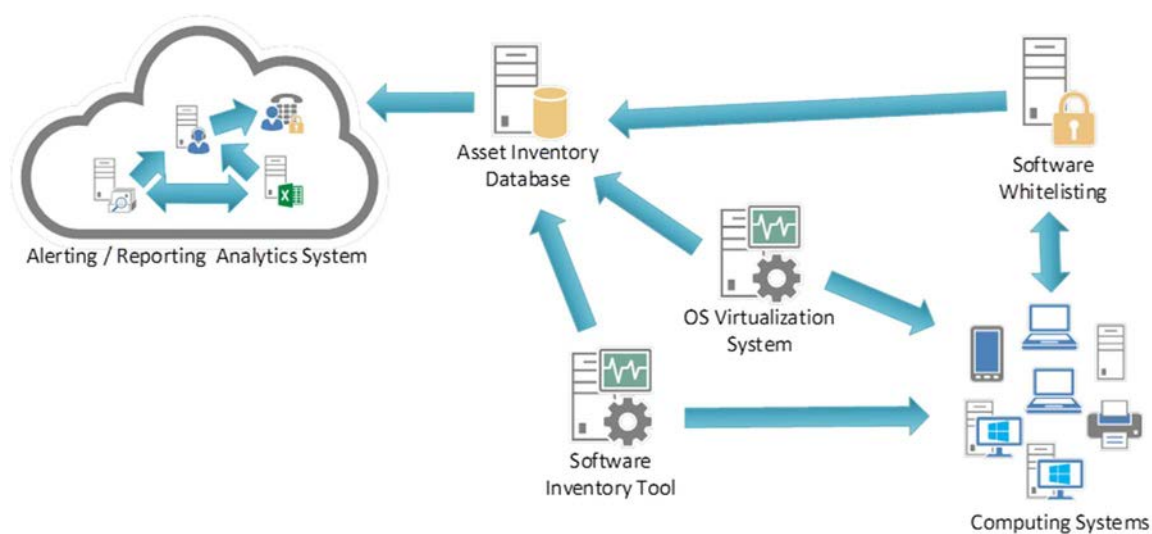


Figure B-2: Control 2 System Entity Relationship Diagram

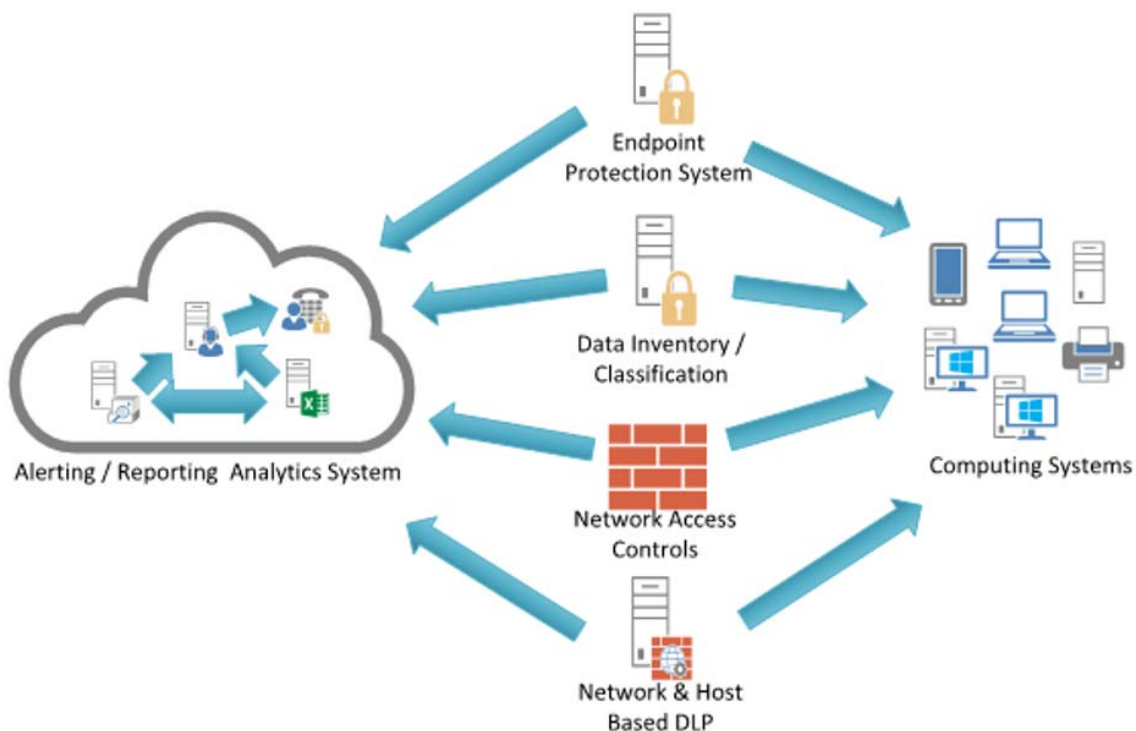


Figure B-3: Control 3 System Entity Relationship Diagram

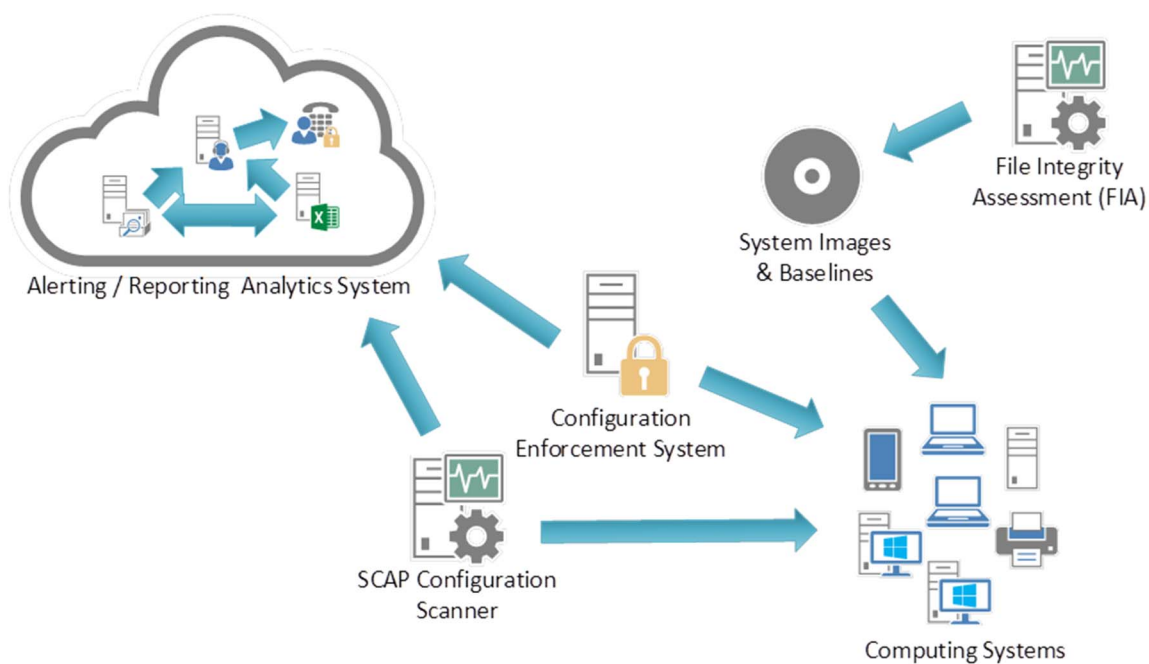


Figure B-4: Control 4 System Entity Relationship Diagram

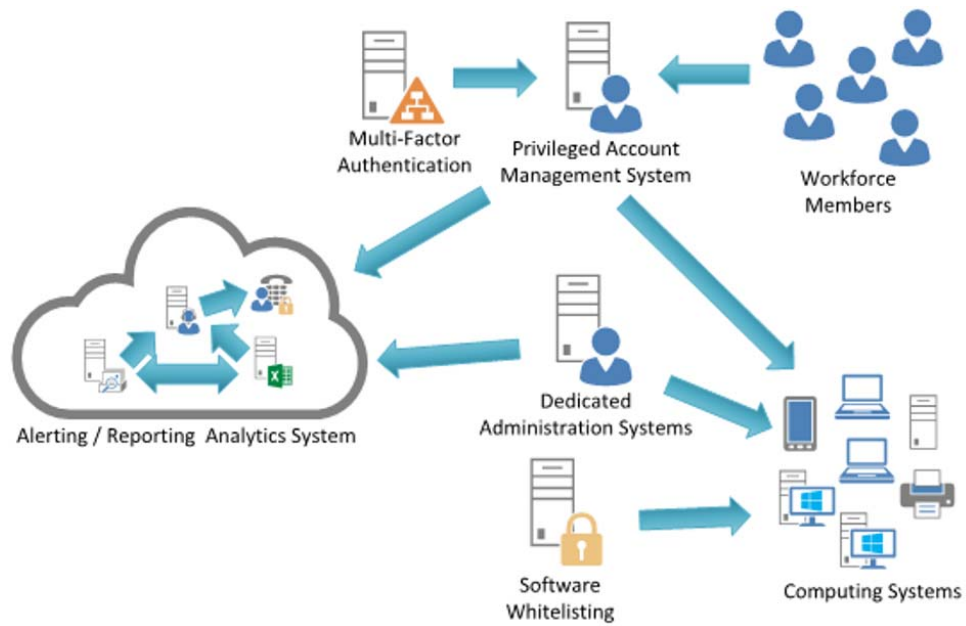


Figure B-5: Control 5 System Entity Relationship Diagram

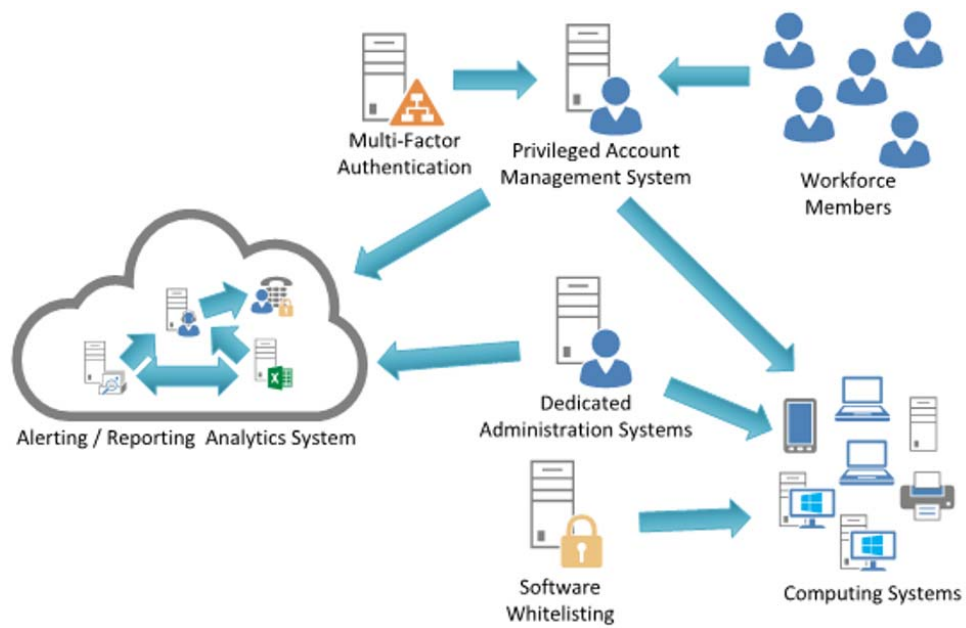


Figure B-6: Controls 6 System Entity Relationship Diagram

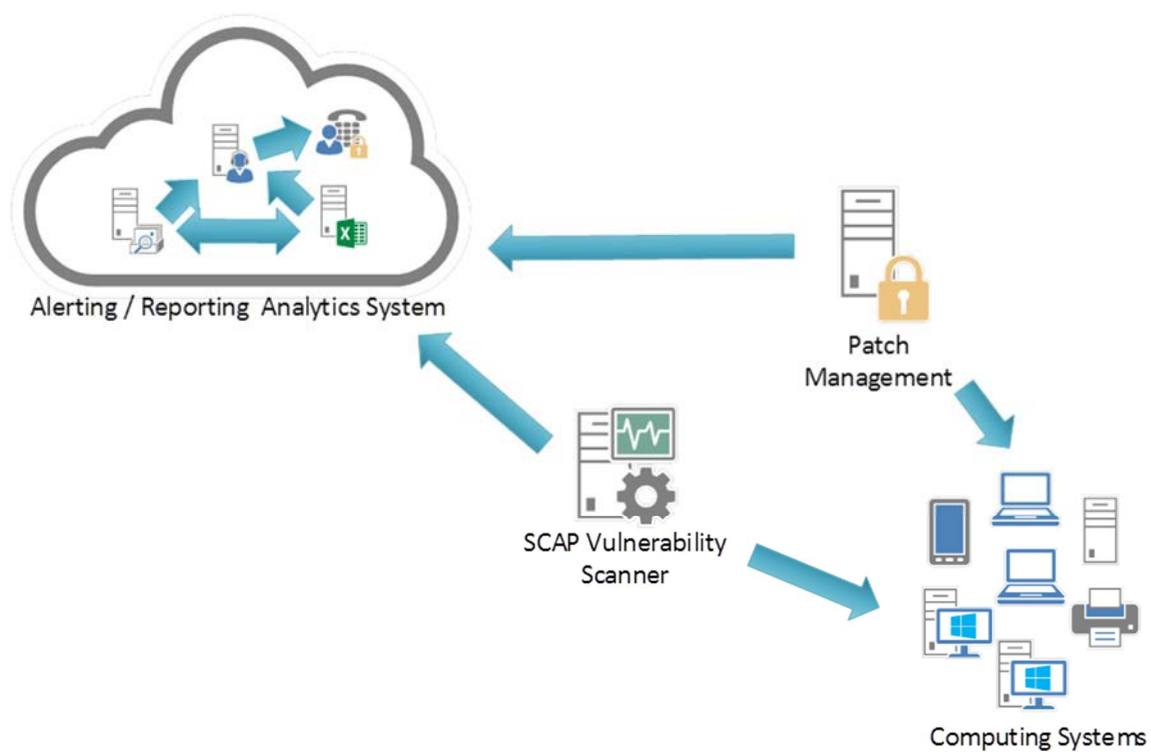


Figure B-7: Control 7 System Entity Relationship Diagram

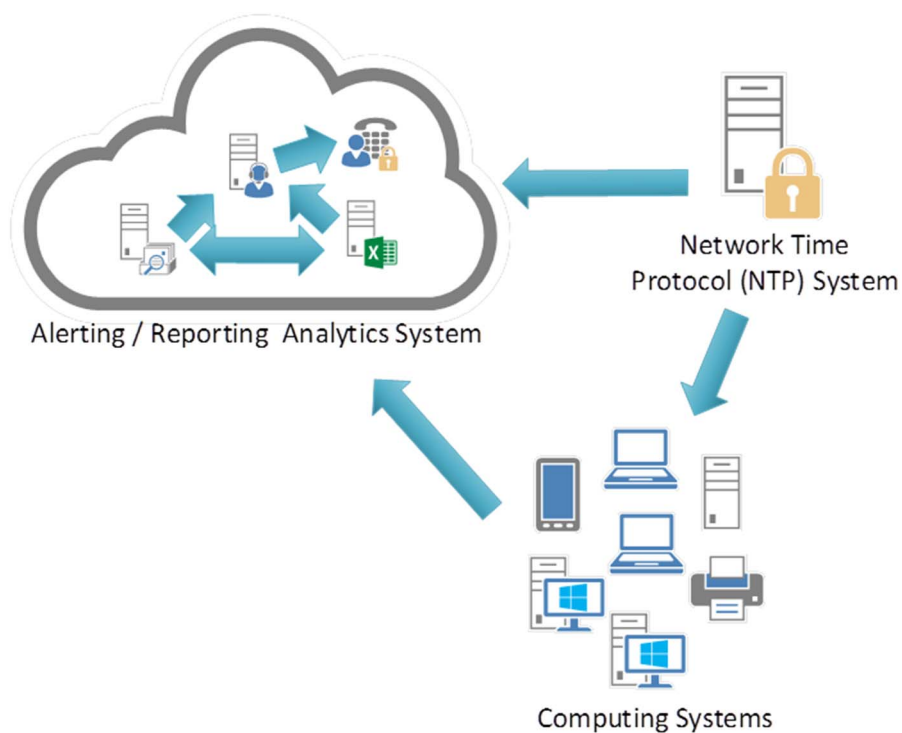


Figure B-8: Control 8 System Entity Relationship Diagram

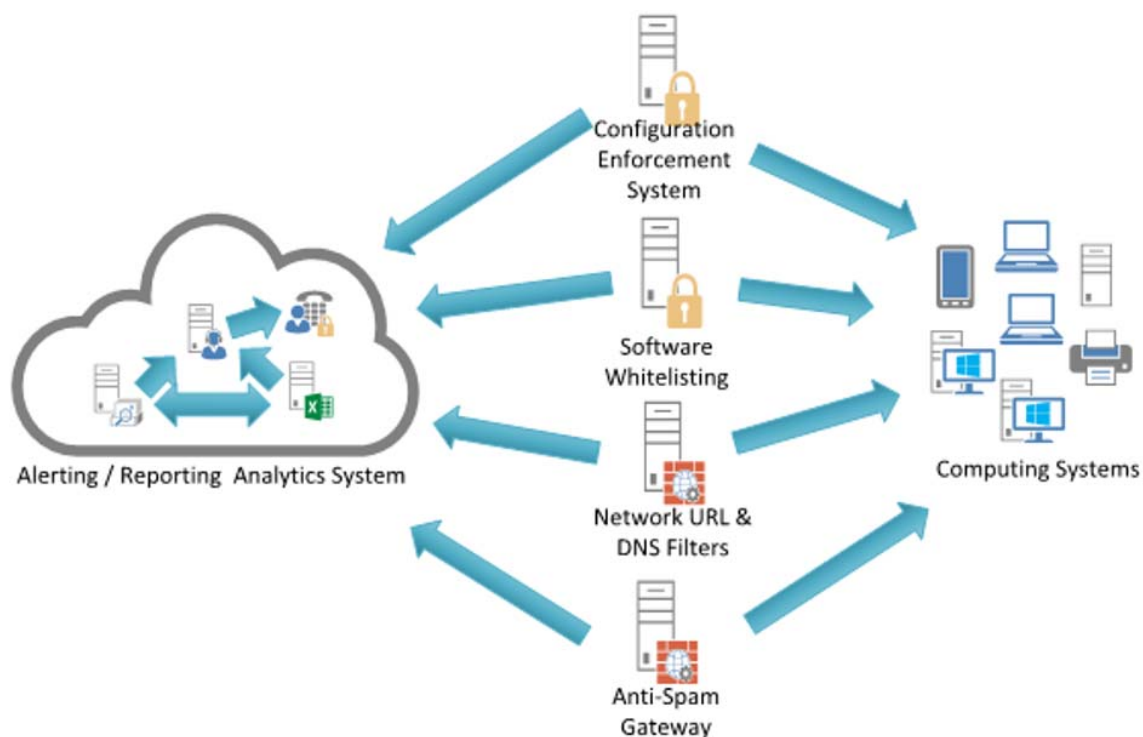


Figure B-9: Control 9 System Entity Relationship Diagram

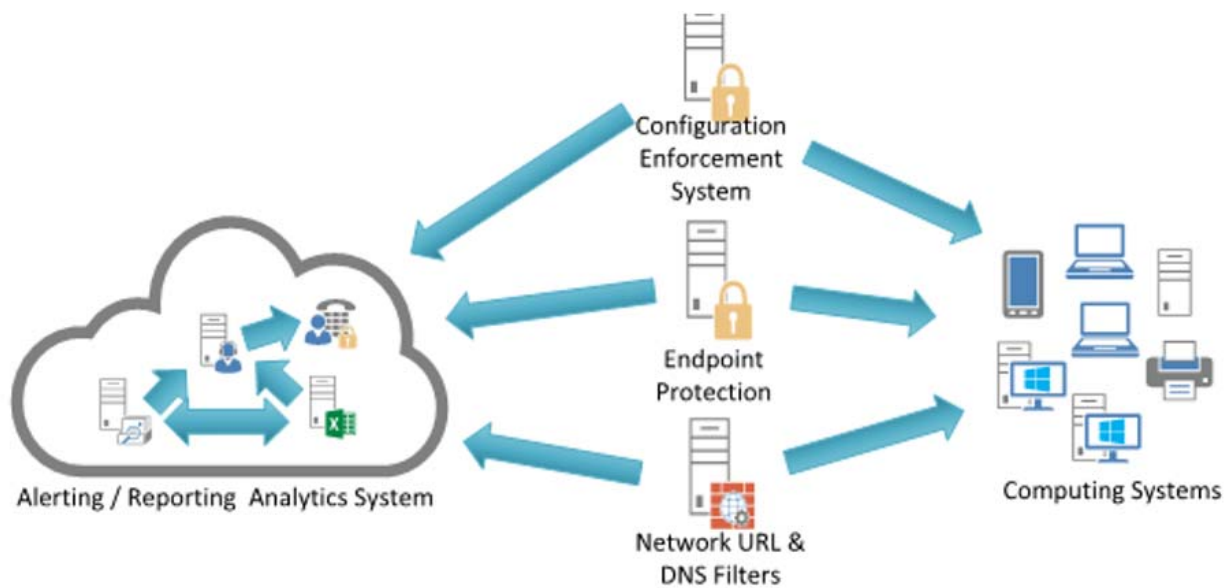


Figure B-10: Control 10 System Entity Relationship Diagram

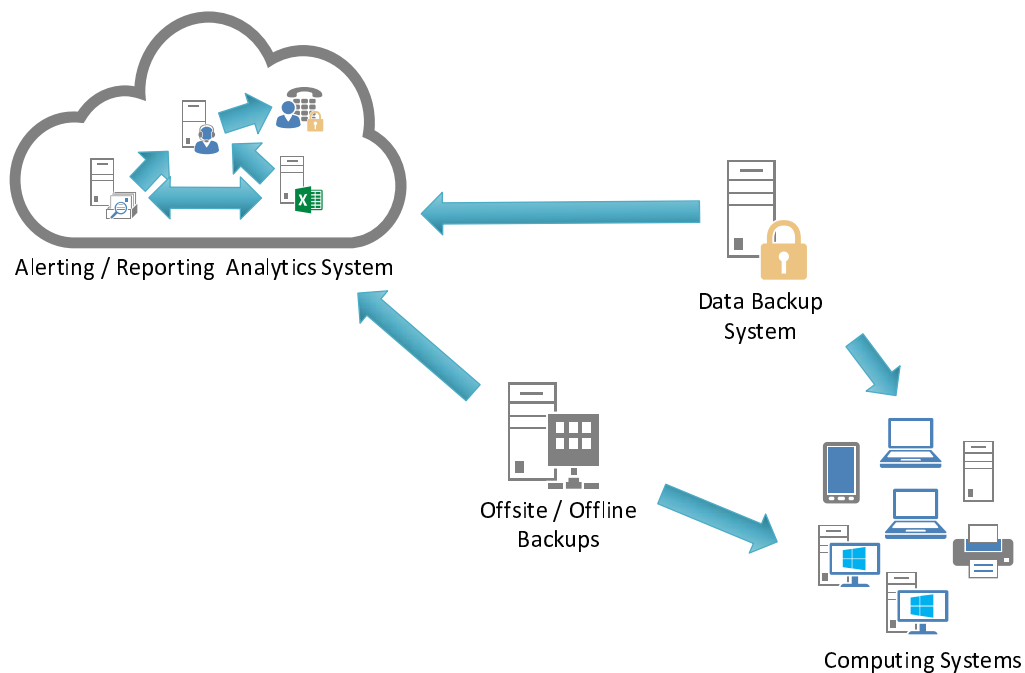


Figure B-11: Control 11 System Entity Relationship Diagram

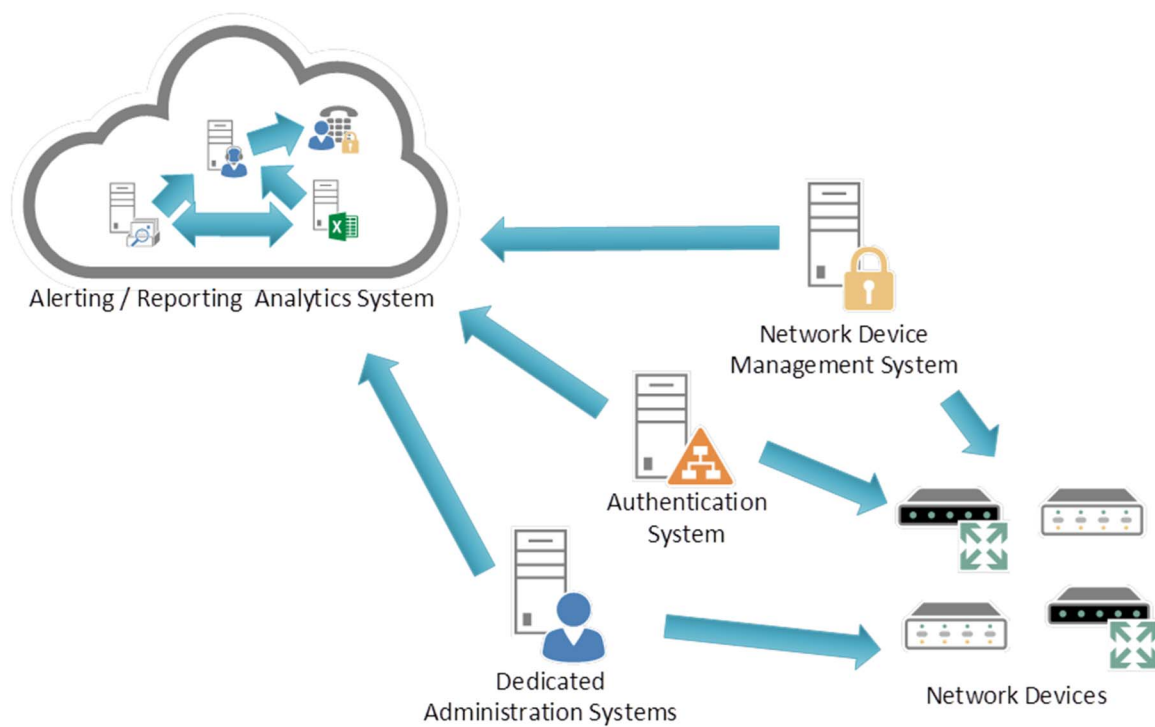


Figure B-12: Control 12 System Entity Relationship Diagram

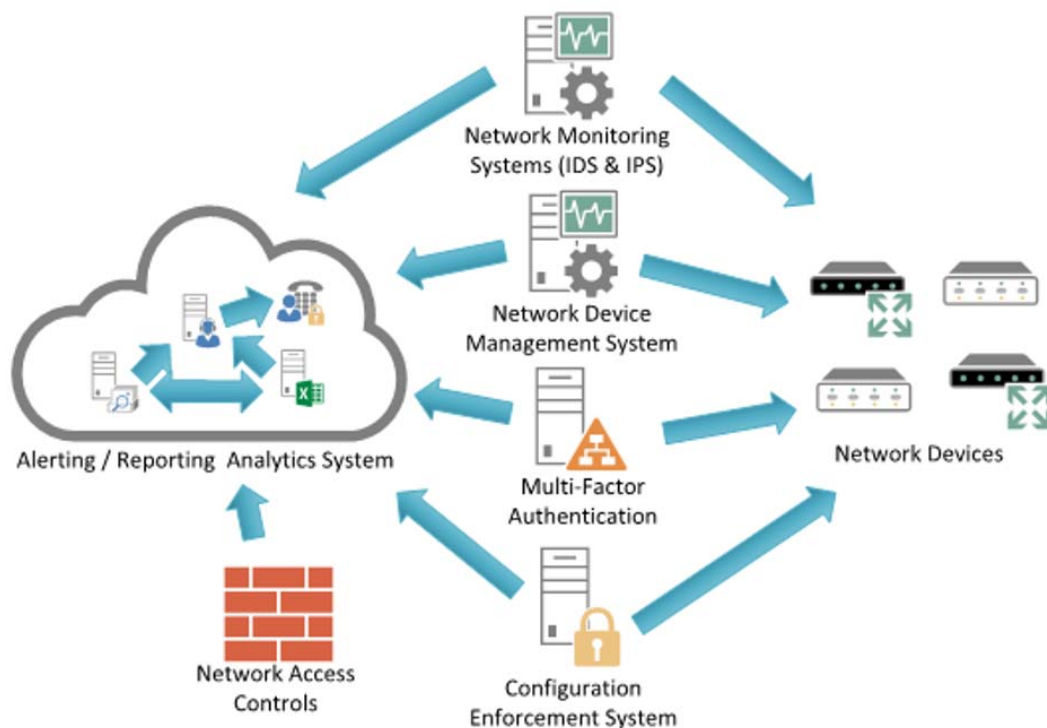


Figure B-13: Control 13 System Entity Relationship Diagram

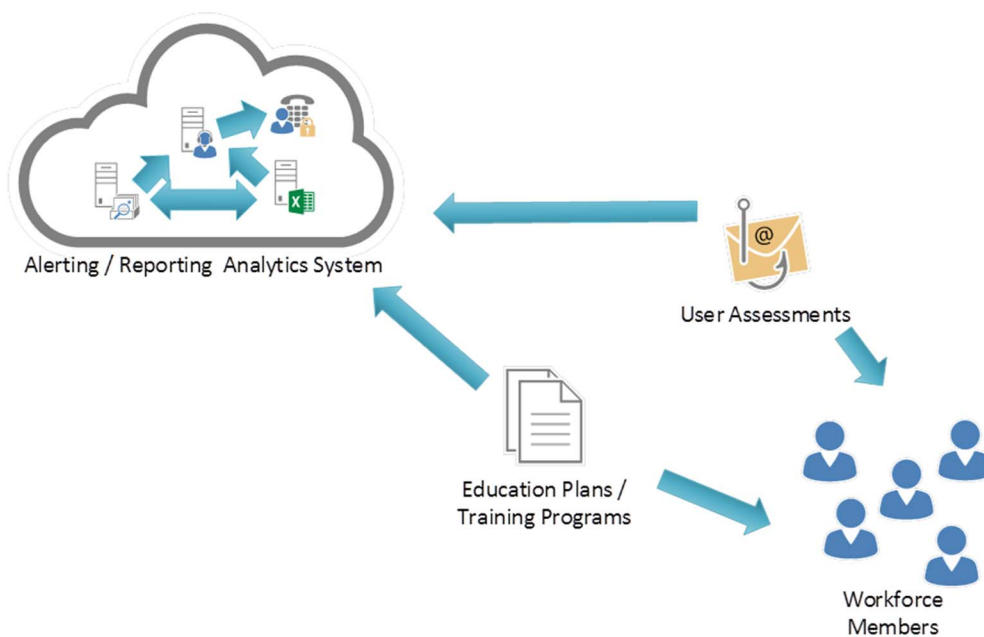


Figure B-14: Control 14 System Entity Relationship Diagram

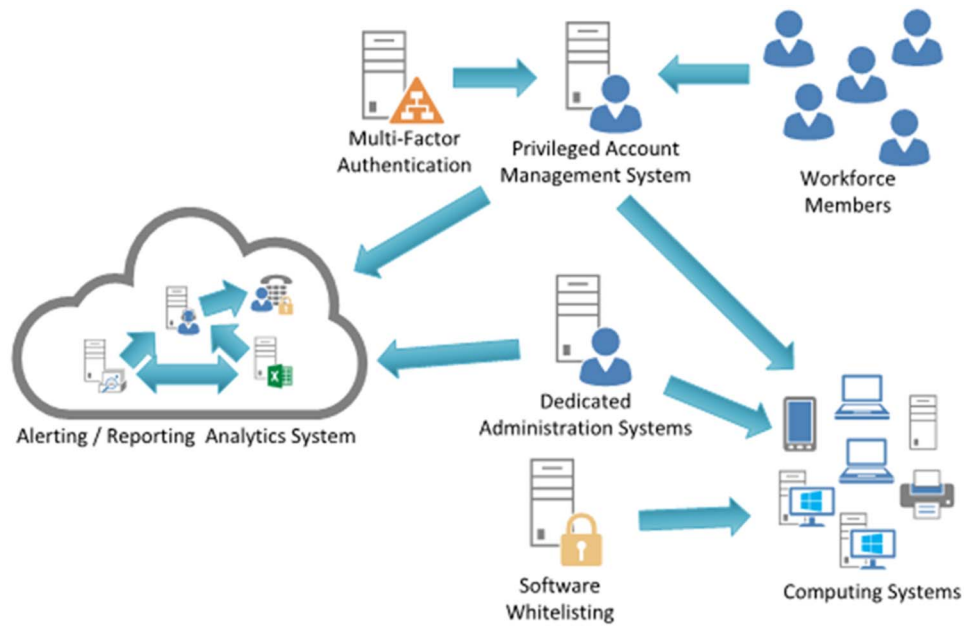


Figure B-15: Control 15 System Entity Relationship Diagram

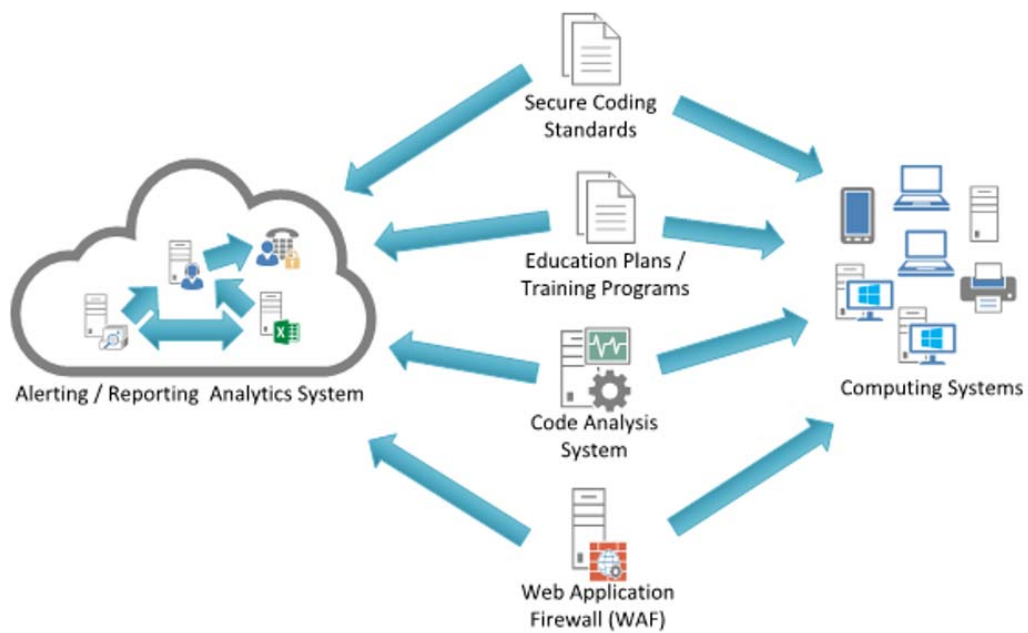


Figure B-16: Control 16 System Entity Relationship Diagram

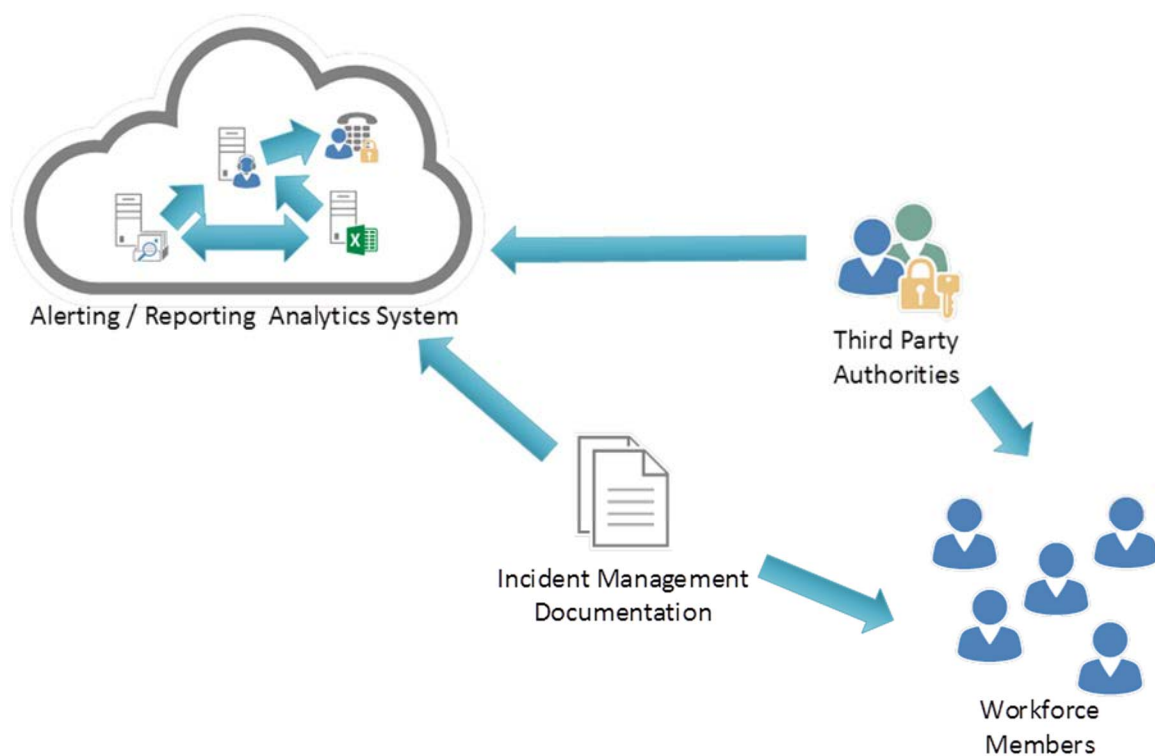


Figure B-17: Control 17 System Entity Relationship Diagram

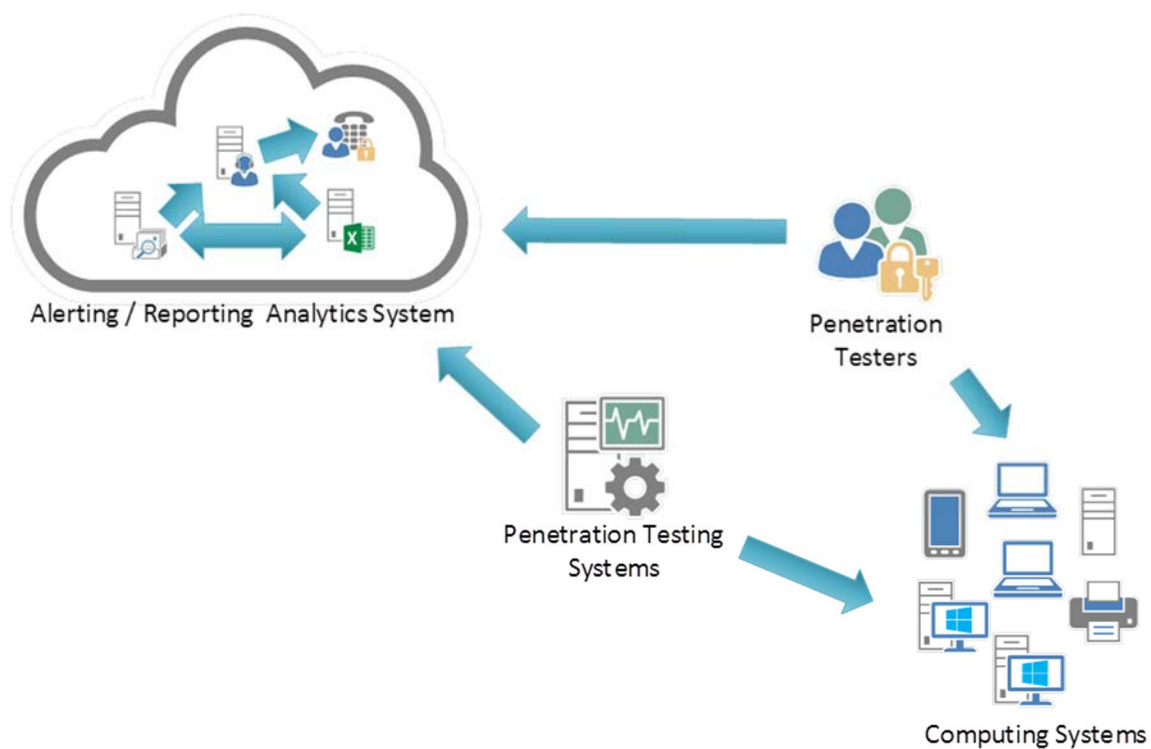


Figure B-18: Control 18 System Entity Relationship Diagram

History

Document history		
V1.1.1	May 2015	Publication as ETSI TR 103 305
V2.1.1	August 2016	Publication
V3.1.1	September 2018	Publication
V4.1.1	December 2021	Publication
V4.1.2	April 2022	Publication