



**E**UROPEAN  
**T**ELECOMMUNICATION  
**S**TANDARD

**DRAFT**  
pr **ETS 300 958**

December 1996

---

Source: ETSI TC-SMG

Reference: DE/SMG-030491QR

ICS: 33.020

**Key words:** Digital cellular telecommunications system, Global System for Mobile communications (GSM)



**Digital cellular telecommunications system (Phase 2+);  
Explicit Call Transfer (ECT) supplementary service - Stage 3  
(GSM 04.91 version 5.1.1)**

**ETSI**

European Telecommunications Standards Institute

**ETSI Secretariat**

**Postal address:** F-06921 Sophia Antipolis CEDEX - FRANCE

**Office address:** 650 Route des Lucioles - Sophia Antipolis - Valbonne - FRANCE

**X.400:** c=fr, a=atlas, p=etsi, s=secretariat - **Internet:** secretariat@etsi.fr

Tel.: +33 4 92 94 42 00 - Fax: +33 4 93 65 47 16

---

**Copyright Notification:** No part may be reproduced except as authorized by written permission. The copyright and the foregoing restriction extend to reproduction in all media.

© European Telecommunications Standards Institute 1996. All rights reserved.



## Contents

Foreword .....	5
1 Scope .....	7
2 Normative references .....	7
3 Abbreviations.....	8
4 Explicit Call Transfer (ECT).....	9
4.1 Normal operation .....	9
4.2 Explicit Call Transfer invocation.....	9
4.3 Notification to the remote parties .....	10
4.3.1 Notification to the held remote party.....	10
4.3.2 Notification to the active or alerting remote party .....	11
4.4 Activation and deactivation .....	11
4.5 Registration, erasure and interrogation.....	11
5 Support by "old" MSs.....	11
5.1 Explicit Call Transfer invocation.....	12
5.2 Notification to the remote parties .....	12
History.....	13

Blank page

## Foreword

This draft European Telecommunication Standard (ETS) has been produced by the Special Mobile Group (SMG) Technical Committee (TC) of the European Telecommunications Standards Institute (ETSI) and is now submitted for the Unified Approval Procedure phase of the ETSI approval procedure.

This ETS specifies the stage 3 description of the call transfer supplementary services within the digital cellular telecommunications system.

This ETS is a GSM technical specification version 5 and is part of the 1996 release of the GSM Technical Specifications.

The specification from which this ETS has been derived was originally based on CEPT documentation, hence the presentation of this ETS may not be entirely in accordance with the ETSI/PNE rules.

<b>Proposed transposition dates</b>	
Date of latest announcement of this ETS (doa):	3 months after ETSI publication
Date of latest publication of new National Standard or endorsement of this ETS (dop/e):	6 months after doa
Date of withdrawal of any conflicting National Standard (dow):	6 months after doa

Blank page

## 1 Scope

This European Telecommunication Standard (ETS) gives the stage 3 description of the call transfer supplementary services.

This ETS specifies the procedures used at the radio interface (Reference point Um as defined in GSM 04.02) for normal operation, registration, erasure, activation, deactivation, invocation and interrogation of call transfer supplementary services. Provision and withdrawal of supplementary services is an administrative matter between the mobile subscriber and the service provider and cause no signalling on the radio interface.

In GSM 04.10 the general aspects of the specification of supplementary services at the layer 3 radio interface are given.

GSM 04.80 specifies the formats and coding for the supplementary services.

Definitions and descriptions of supplementary services are given in GSM 02.04, GSM 02.8x and GSM 02.9x-series. GSM 02.91 is related specifically to call transfer supplementary services.

The technical realization of supplementary services is described in GSM 03.11, GSM 03.8x and 03.9x-series. GSM 03.91 is related specifically to call transfer supplementary services.

The procedures for Call Control, Mobility Management and Radio Resource management at the layer 3 radio interface are defined in GSM 04.07 and GSM 04.08.

The following supplementary services belong to the call transfer supplementary services and are described in this ETS

- Explicit Call Transfer (ECT) (see clause 4).

## 2 Normative references

This ETS incorporates by dated and undated reference, provisions from other publications. These normative references are cited at the appropriate places in the text and the publications are listed hereafter. For dated references, subsequent amendments to or revisions of any of these publications apply to this ETS only when incorporated in it by amendment or revision. For undated references, the latest edition of the publication referred to applies.

- |     |   |
|-----|---|
| [1] | GSM 01.04 (ETR 350): "Digital cellular telecommunications system (Phase 2+); Abbreviations and acronyms".                                 |
| [2] | GSM 02.04 (ETS 300 918): "Digital cellular telecommunications system (Phase 2+); General on supplementary services".                      |
| [3] | GSM 02.30 (ETS 300 907): "Digital cellular telecommunications system (Phase 2+); Man-Machine Interface (MMI) of the Mobile Station (MS)". |
| [4] | GSM 02.81: "Digital cellular telecommunications system; Line identification supplementary services - Stage 1".                            |
| [5] | GSM 02.82: "Digital cellular telecommunications system; Call Forwarding (CF) supplementary services - Stage 1".                           |
| [6] | GSM 02.83: "Digital cellular telecommunications system; Call Waiting (CW) and Call Hold (HOLD) supplementary services - Stage 1".         |
| [7] | GSM 02.84: "Digital cellular telecommunications system; MultiParty (MPTY) supplementary services - Stage 1".                              |
| [8] | GSM 02.85: "Digital cellular telecommunications system; Closed User Group (CUG) supplementary services - Stage 1".                        |

- [9] GSM 02.86: "Digital cellular telecommunications system; Advice of Charge (AoC) Supplementary Services - Stage 1".
- [10] GSM 02.88: "Digital cellular telecommunications system; Call Barring (CB) supplementary services - Stage 1".
- [11] GSM 02.90: "Digital cellular telecommunications system (Phase 2+); Unstructured Supplementary Service Data (USSD) - Stage 1".
- [12] GSM 02.91: "Digital cellular telecommunications system (Phase 2+); Explicit Call Transfer (ECT)".
- [13] GSM 03.11 (ETS 300 928): "Digital cellular telecommunications system; Technical realization of supplementary services".
- [14] GSM 03.81: "Digital cellular telecommunications system; Line identification supplementary services - Stage 2".
- [15] GSM 03.82: "Digital cellular telecommunications system; Call Forwarding (CF) supplementary services - Stage 2".
- [16] GSM 03.83: "Digital cellular telecommunications system; Call Waiting (CW) and Call Hold (HOLD) supplementary services - Stage 2".
- [17] GSM 03.84: "Digital cellular telecommunications system; MultiParty (MPTY) supplementary services - Stage 2".
- [18] GSM 03.85: "Digital cellular telecommunications system; Closed User Group (CUG) supplementary services - Stage 2".
- [19] GSM 03.86 (ETS 300 935): "Digital cellular telecommunications system; Advice of Charge (AoC) supplementary services - Stage 2".
- [20] GSM 03.88: "Digital cellular telecommunications system; Call Barring (CB) supplementary services - Stage 2".
- [21] GSM 03.90: "Digital cellular telecommunications system; Unstructured supplementary services operation - Stage 2".
- [22] GSM 03.91: "Digital cellular telecommunications system (Phase 2+); Explicit Call Transfer (ECT) supplementary service - Stage 2".
- [23] GSM 04.02: "Digital cellular telecommunications system (Phase 2+); GSM Public Land Mobile Network (PLMN) access reference configuration".
- [24] GSM 04.07 (ETS 300 939): "Digital cellular telecommunications system (Phase 2+); Mobile radio interface signalling layer 3; General aspects".
- [25] GSM 04.08 (ETS 300 940): "Digital cellular telecommunications system (Phase 2+); Mobile radio interface layer 3 specification".
- [26] GSM 04.10 (ETS 300 941): "Digital cellular telecommunications system; Mobile radio interface layer 3; Supplementary services specification; General aspects".
- [27] GSM 04.80 (ETS 300 950): "Digital cellular telecommunications system (Phase 2+); Mobile radio interface layer 3 supplementary services specification; Formats and coding".

### 3 Abbreviations

The abbreviations used in this ETS are listed in GSM 01.04.



## 4 Explicit Call Transfer (ECT)

### 4.1 Normal operation

The Explicit Call Transfer (ECT) function should be invoked in association with two existing calls which one is answered and in the held state and the other is answered and active or alerting.

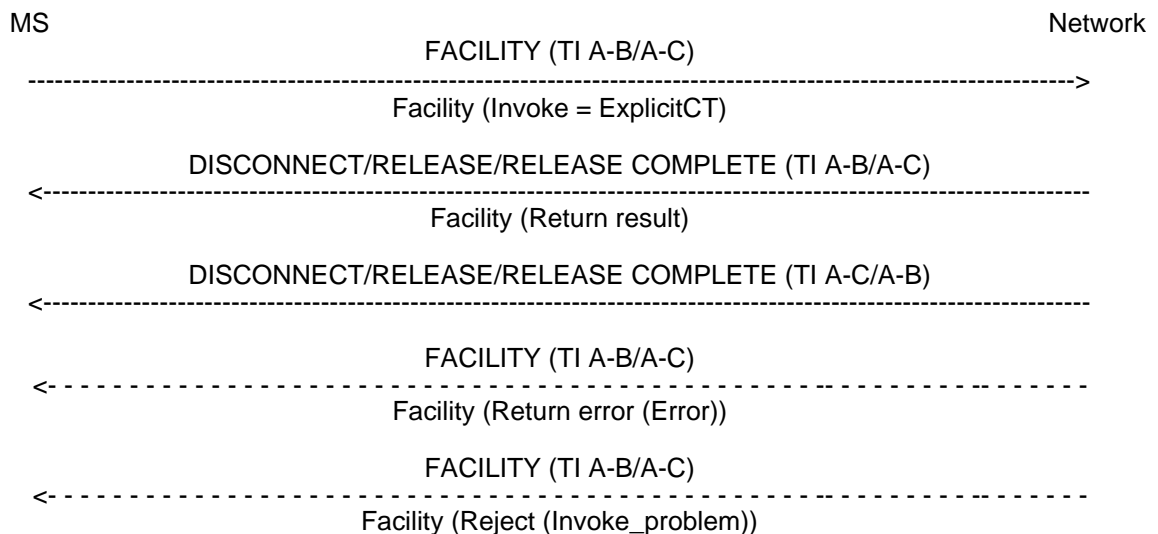
The Mobile Station (MS) invokes the service by sending a FACILITY message to the network containing the ECT request (ECT request). This ECT request indicates to the network that the mobile subscriber wishes the two calls to be connected together. The MS shall not change the basic call state or the auxiliary state of either call when sending ECT request.

The network will normally accept the ECT request and connect the two calls, indicates the success of the ECT request to the served subscriber and disconnect afterwards the served mobile subscriber from both calls (see figure 1).

If the ECT request is not accepted, the network will indicate the error to the served subscriber (see figure 1) and leaves the two calls to the condition it was in prior to the ECT request. The network confirms with the same transaction identifier. The detailed coding of the different error values are specified in GSM 04.80. Which error value is used in which error case is described below.

During the ECT operation the MS shall run a timer TECT. This timer is started when the operation is sent, and stopped when a response is received from the network. If this timer expires the MS shall assume that the operation has failed, locally release the invokeID, and may re-attempt the operation or inform the user of the failure.

### 4.2 Explicit Call Transfer invocation



NOTE: A-B/A-C indicates a choice. The Transaction Identifier (TI) used for the invocation of ECT shall be that of the active/answered call or of the held call.  
A-C/A-B indicates the TI of the other call.

**Figure 1: Invocation of Explicit Call Transfer**

In the following table, the use of the different error values is described:

**Table 1: Error values**

Error	Error case
<b>IllegalSS-Operation</b>	- operation violates the general rules applicable to the service - different calls and either off them or two are not TS 11 (telephony) - one or both of the calls are in the wrong call states - having only one call or one call is clearing - creation of a traffic channel loop
<b>SS-ErrorStatus</b>	- the served subscriber has not subscribed to ECT
<b>SS-NotAvailable</b>	- SS is not available in current location area
<b>SS-Incompatibility</b>	- SS-Interaction violation
<b>FacilityNotSupported</b>	- Facility not supported in VPLMN
<b>SystemFailure</b>	- problems in an entity or network resources
<b>ResourcesNotAvailable</b>	- problems to allocate resources
<b>CallBarred</b>	- contravention with the active barring program

### 4.3 Notification to the remote parties

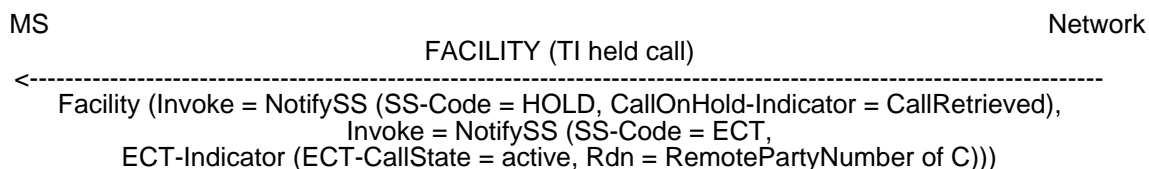
If the network received a non-zero SS Screening indicator from the remote party's MS the network shall send a notification to the remote party indicating that the call has been transferred and towards the previously-held party to indicate that he is now retrieved.

If the network did not receive a non-zero SS Screening indicator from the remote party's MS it shall not send a notification.

The content of the Notification Indicator and the Redirection Number in detail is given in GSM 03.91 and the coding in GSM 04.80. For the following it is assumed that the Line Identities of the remote parties are available and allowed to be presented to the remote parties.

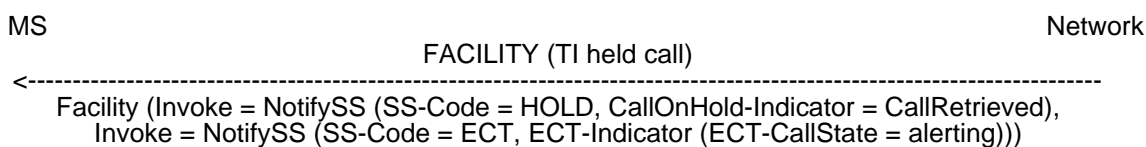
#### 4.3.1 Notification to the held remote party

If ECT was invoked in the active state the previous-held remote party will be notified at the invocation of ECT (see figure 2).

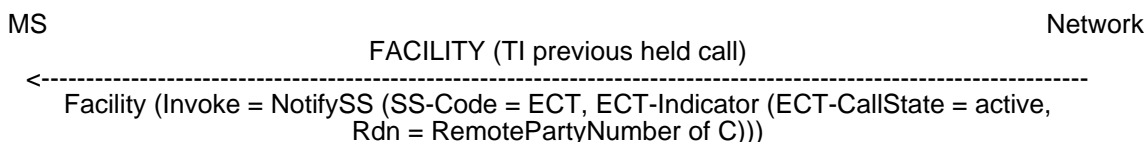


**Figure 2: Notification of invocation (at active state) to held remote party**

If ECT was invoked in the alerting state the previous-held remote party will be notified at the invocation of ECT (figure 3) and again at the receipt of the ANSWER message from the previous-alerting remote party (figure 4).

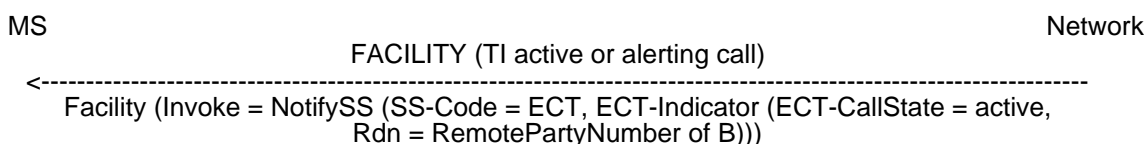


**Figure 3: Notification of invocation (at alerting state) to held remote party**



**Figure 4: Notification to the previous-held remote party at receipt of the ANSWER message by the previous-alerting remote party**

#### 4.3.2 Notification to the active or alerting remote party



**Figure 5: Notification of invocation to previous-active or previous-alerting remote party**

#### 4.4 Activation and deactivation

Activation and deactivation of ECT cause no signalling on the radio path.

#### 4.5 Registration, erasure and interrogation

Registration, erasure and interrogation of ECT are not applicable.

### 5 Support by "old" MSs

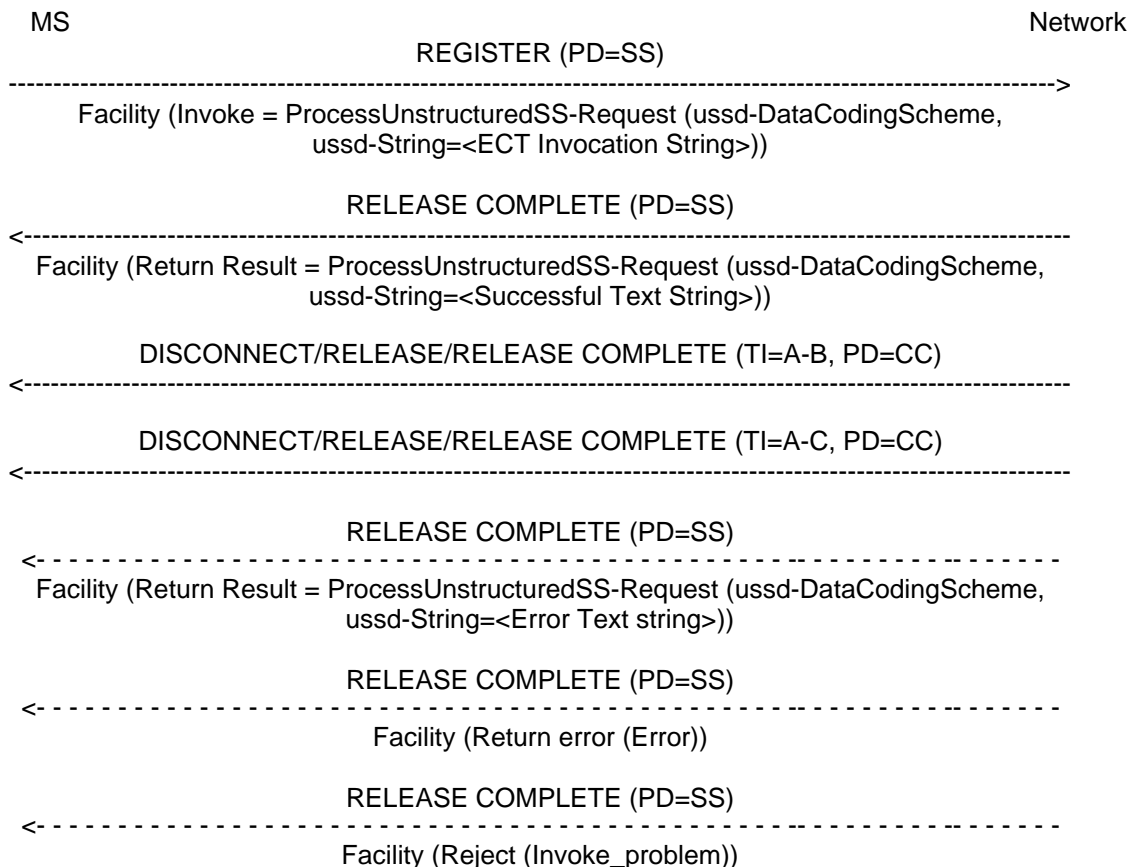
MSs which do not explicitly support ECT are not precluded from attempting to invoke ECT. It is however, an operator option to support the invocation of ECT by these mobile stations. Where operators support this option, the mechanism employed to offer the ECT service to these MSs shall be USSD. However, it should be noted that it may not be possible using this mechanism to offer the same degree of service to the served subscriber as described in clause 4.

**5.1 Explicit Call Transfer invocation**

MS A invokes the service by sending a REGISTER message to the network using a call independent supplementary service (SS) transaction, with the facility information element, indicating ProcessUnstructuredSS-Request (the MMI is specified in GSM 02.30).

If the invocation of ECT is successful, then after the SS transaction has been cleared, the network shall release the CC transactions.

If the invocation of ECT is not successful, then the CC transactions shall not be released.



NOTE: The text strings "<Successful Text String>" and "<Error Text String>" shall be defined by the network operator. Each network shall define only one "<Successful Text String>" and only one "<Error Text string>" for each error identified in table 1.

For Phase 1 USSD the operation ProcessUnstructuredSS-Request is replaced by ProcessUnstructuredSS-Data.

**Figure 6: Invocation of Explicit Call Transfer for non supporting MSs**

**5.2 Notification to the remote parties**

No alternative procedures are defined for sending notifications to remote parties indicating that the call has been transferred.

**History**

<b>Document history</b>	
December 1996	Unified Approval Procedure UAP 61: 1996-12-16 to 1997-04-11