



EUROPEAN
TELECOMMUNICATION
STANDARD

FINAL DRAFT
pr **ETS 300 824**

July 1997

Source: EP-DECT

Reference: DE/DECT-030080

ICS: 33.020

Key words: CAP, CTM, DECT

**Digital Enhanced Cordless Telecommunications (DECT);
Cordless Terminal Mobility (CTM);
CTM Access Profile (CAP)**

ETSI

European Telecommunications Standards Institute

ETSI Secretariat

Postal address: F-06921 Sophia Antipolis CEDEX - FRANCE

Office address: 650 Route des Lucioles - Sophia Antipolis - Valbonne - FRANCE

X.400: c=fr, a=atlas, p=etsi, s=secretariat - **Internet:** secretariat@etsi.fr

Tel.: +33 4 92 94 42 00 - Fax: +33 4 93 65 47 16

Copyright Notification: No part may be reproduced except as authorized by written permission. The copyright and the foregoing restriction extend to reproduction in all media.

© European Telecommunications Standards Institute 1997. All rights reserved.

Contents

| | |
|---|----|
| Foreword | 7 |
| 1 Scope | 9 |
| 2 Normative references | 9 |
| 3 Definitions, abbreviations and symbols | 10 |
| 3.1 Definitions | 10 |
| 3.2 Abbreviations | 13 |
| 3.3 Symbols | 14 |
| 4 Introduction | 15 |
| 5 Feature definitions | 15 |
| 5.1 Network (NWK) features | 15 |
| 5.1.1 Application features | 15 |
| 6 Service definitions | 15 |
| 6.1 DLC service definitions | 15 |
| 6.2 Medium Access Control (MAC) service definitions | 16 |
| 7 Interoperability requirements | 16 |
| 7.1 General | 16 |
| 7.2 NWK features | 16 |
| 7.3 DLC services | 16 |
| 7.4 MAC services | 17 |
| 7.5 Physical Layer (PHL) services | 17 |
| 7.6 Application features | 17 |
| 7.7 NWK feature to procedure mapping | 18 |
| 7.8 Service to procedure mapping | 19 |
| 7.8.1 DLC service to procedure mapping | 19 |
| 7.8.2 MAC service to procedure mapping | 19 |
| 7.8.3 Application feature to procedure mapping | 19 |
| 7.9 General requirements | 19 |
| 7.9.1 Coexistence of MM and CC procedures | 19 |
| 8 Procedure description | 20 |
| 9 NWK layer procedures | 20 |
| 9.1 External handover procedures | 20 |
| 9.1.1 Handover candidate procedure | 20 |
| 9.1.1.1 Handover candidate indication | 20 |
| 9.1.1.2 Handover candidate retrieval | 21 |
| 9.1.1.2.1 Exceptional cases | 21 |
| 9.1.1.2.1.1 Failure of the PP handover candidate retrieval attempt | 21 |
| 9.1.2 Target FP selection | 21 |
| 9.1.3 Handover reference procedure | 22 |
| 9.1.3.1 Handover reference indication | 22 |
| 9.1.3.2 Handover reference retrieval | 22 |
| 9.1.3.2.1 Exceptional cases | 22 |
| 9.1.3.2.1.1 Failure of the PP handover reference retrieval attempt | 22 |
| 9.1.4 External handover call setup | 23 |
| 9.1.4.1 Associated procedures | 23 |
| 9.1.4.1.1 Transaction identifier handling | 23 |

| | | | |
|----------------------|---------|---|----|
| | 9.1.4.2 | Exceptional cases | 23 |
| | | 9.1.4.2.1 Abnormal link release on FP-1 leg | 23 |
| | | 9.1.4.2.2 Normal call release on FP-2 leg | 23 |
| | | 9.1.4.2.3 Abnormal link release on FP-2 leg | 24 |
| | 9.1.5 | Ciphering procedure | 24 |
| | | 9.1.5.1 Ciphering procedure PT initiated..... | 24 |
| | | 9.1.5.2 Ciphering procedure FT initiated..... | 24 |
| | 9.1.6 | U-plane handling..... | 24 |
| 9.2 | | Emergency call setup | 25 |
| 9.3 | | Display..... | 25 |
| 9.4 | | Terminal capability indication | 26 |
| 9.5 | | Detach | 26 |
| 9.6 | | Enhanced location registration | 27 |
| | 9.6.1 | Exceptional case(s) | 27 |
| | | 9.6.1.1 Failure of location registration procedure..... | 27 |
| 9.7 | | Message waiting indication | 28 |
| | 9.7.1 | MWIndicate- activation | 29 |
| | 9.7.2 | MWIndicate- deactivation | 30 |
| | 9.7.3 | Retrieval of the message | 30 |
| 9.8 | | On-air modification of user parameters..... | 30 |
| | 9.8.1 | Exceptional cases..... | 31 |
| | | 9.8.1.1 Collision with normal call procedure..... | 31 |
| 10 | | DLC layer procedures..... | 31 |
| 11 | | MAC layer procedures | 32 |
| | 11.1 | General..... | 32 |
| | 11.2 | Downlink broadcast..... | 32 |
| | 11.3 | Non-continuous broadcast | 33 |
| | | 11.3.1 Mt message | 33 |
| | | 11.3.1.1 Extended system information..... | 33 |
| | | 11.3.1.2 TARI message | 34 |
| | 11.4 | RFP status..... | 35 |
| | | 11.4.1 RFP status information | 35 |
| | 11.5 | Extended fixed part capabilities..... | 36 |
| 12 | | Physical layer requirements..... | 36 |
| | 12.1 | General..... | 36 |
| | 12.2 | External handover | 36 |
| 13 | | Requirements regarding the speech transmission | 36 |
| | 13.1 | General..... | 36 |
| | 13.2 | Reference to GAP | 36 |
| 14 | | Management procedures..... | 37 |
| | 14.1 | General..... | 37 |
| | 14.2 | Location registration initiation..... | 37 |
| | 14.3 | Assigned individual Temporary Portable User Identity (TPUI) management..... | 37 |
| | 14.4 | Detach | 38 |
| | 14.5 | External handover | 38 |
| | 14.6 | Emergency call management..... | 38 |
| | 14.7 | PMID management | 39 |
| | 14.8 | Broadcast attributes management | 39 |
| | 14.9 | Message waiting indication | 39 |
| 15 | | Application procedures | 40 |
| | 15.1 | General..... | 40 |
| | 15.2 | Subscription control..... | 40 |
| Annex A (normative): | | System parameters..... | 41 |
| A.1 | | NWK layer constants | 41 |

| | | |
|------------------------|---|----|
| A.2 | PHL constants..... | 41 |
| Annex B (informative): | PP locking procedure for on air subscription..... | 42 |
| Annex C (normative): | ETS 300 175 changes..... | 43 |
| C.1 | General..... | 43 |
| C.2 | Network layer | 43 |
| C.2.1 | New codings in << Duration>> IE | 43 |
| C.2.2 | <<Terminal capability>> IE coding..... | 43 |
| C.2.3 | Modification of access rights..... | 43 |
| C.3 | Identities and addressing | 44 |
| C.3.1 | New lock timer user limit..... | 44 |
| Annex D (informative): | Tones, progress indicator and U-plane connection..... | 45 |
| Annex E (informative): | PARI and SARI use for CTM roaming..... | 46 |
| Annex F (normative): | Class 2 synchronization requirements..... | 48 |
| Annex G (normative): | Synchronization requirements for fixed parts | 49 |
| Annex H (informative): | Coding example for message waiting indication | 50 |
| History..... | | 51 |

Blank page

Foreword

This final draft European Telecommunication Standard (ETS) has been produced by the Digital Enhanced Cordless Telecommunications (DECT) Project of the European Telecommunications Standards Institute (ETSI), and is now submitted for the Voting phase of the ETSI standards approval procedure.

This ETS is based on ETS 300 175, parts 1 to 8 [1] to [8] and ETS 300 444 [12].

| Proposed transposition dates | |
|---|---------------------------------|
| Date of latest announcement of this ETS (doa): | 3 months after ETSI publication |
| Date of latest publication of new National Standard or endorsement of this ETS (dop/e): | 6 months after doa |
| Date of withdrawal of any conflicting National Standard (dow): | 6 months after doa |

Blank page

1 Scope

This European Telecommunication Standard (ETS) specifies that set of technical requirements for Digital Enhanced Cordless Telecommunications (DECT) Fixed Part (FP) and DECT Portable Part (PP) necessary for the support of the Cordless Terminal Mobility (CTM) Access Profile (CAP).

The objective of the ETS is to ensure the air interface interoperability of DECT CAP PPs and DECT CAP FPs if applied.

The CTM service allows users of cordless terminals to be mobile within and between networks. Where radio coverage is provided and the cordless terminal has appropriate access rights the user shall be able to make calls from, and to receive calls at, any location within the fixed public and/or private networks, and may move without interruption of a call in progress.

This ETS covers the DECT access requirements for CTM phase 2 as defined in the CTM phase 2 service description, DE/NA-010061 [14].

The main objectives of the CAP are:

- maintain compatibility with the DECT Generic Access Profile (GAP), identifying only components not mandatory in the GAP to be added to obtain capabilities needed in the CTM context;
- maintain compatibility with ETS 300 175 [1] to [8], for procedures not defined in the GAP.

The CTM access profile is seen as an extension of the GAP mandatory base covering the requirements for CTM phase 2.

CAP supports telephony teleservice and provides 32 kbit/s Adaptive Differential Pulse Code Modulation (ADPCM) speech bearer service.

CTM supplementary services with no impact on the air interface are not considered in the CAP.

2 Normative references

This ETS incorporates, by dated or undated reference, provisions from other publications. These normative references are cited at the appropriate places in the text and the publications are listed hereafter. For dated references, subsequent amendments to or revisions of any of these publications apply to this ETS only when incorporated in it by amendment or revision. For undated references the latest edition of the publication referred to applies.

- | | |
|-----|---|
| [1] | ETS 300 175-1: "Digital Enhanced Cordless Telecommunications (DECT); Common Interface (CI); Part 1: Overview". |
| [2] | ETS 300 175-2: "Digital Enhanced Cordless Telecommunications (DECT); Common Interface (CI); Part 2: Physical layer (PHL)". |
| [3] | ETS 300 175-3: "Digital Enhanced Cordless Telecommunications (DECT); Common Interface (CI); Part 3: Medium Access Control (MAC) layer". |
| [4] | ETS 300 175-4: "Digital Enhanced Cordless Telecommunications (DECT); Common Interface (CI); Part 4: Data Link Control (DLC) layer". |
| [5] | ETS 300 175-5: "Digital Enhanced Cordless Telecommunications (DECT); Common Interface (CI); Part 5: Network (NWK) layer". |
| [6] | ETS 300 175-6: "Digital Enhanced Cordless Telecommunications (DECT); Common Interface (CI); Part 6: Identities and addressing". |
| [7] | ETS 300 175-7: "Digital Enhanced Cordless Telecommunications (DECT); Common Interface (CI); Part 7: Security features". |

- [8] ETS 300 175-8: "Digital Enhanced Cordless Telecommunications (DECT); Common Interface (CI); Part 8: Speech coding and transmission".
- [9] ETS 300 176: "Digital Enhanced Cordless Telecommunications (DECT); Approval test specification".
- [10] TBR 6: "Digital Enhanced Cordless Telecommunications (DECT); General terminal attachment requirements".
- [11] TBR 10 (1997): "Digital Enhanced Cordless Telecommunications (DECT); General terminal attachment requirements; Telephony applications".
- [12] ETS 300 444 (1995): "Digital European Cordless Telecommunications (DECT); Generic Access Profile (GAP)".
- [13] TBR 22: "Attachment requirements for terminal equipment for Digital Enhanced Cordless Telecommunications (DECT) Generic Access Profile (GAP) applications".
- [14] DEN/NA-010061: "Cordless Terminal Mobility (CTM); Phase 2; Service Description".
- [15] ETS 300 650: "Integrated Services Digital Network (ISDN); Message Waiting Indication (MWI) supplementary service; Service description".
- [16] ETS 300 745-1: "Integrated Services Digital Network (ISDN); Message Waiting Indication (MWI) supplementary service; Digital Subscriber Signalling System No. one (DSS1) protocol; Part 1: Protocol specification".
- [17] ISO/IEC 9646-7 (1995): "Information technology - Open Systems Interconnection - Conformance testing methodology and framework - Part 7: Implementation Conformance Statements".
- [18] ETS 300 196-1: "Integrated Services Digital Network (ISDN); Generic functional protocol for the support of supplementary services; Digital Subscriber Signalling System No. one (DSS1) protocol; Part 1: Protocol specification".

3 Definitions, abbreviations and symbols

3.1 Definitions

For the purposes of this ETS, the following definitions apply:

attach: The process whereby a PP within the coverage area of a FP to which it has access rights, notifies this FP that it is operative. The reverse process is detach, which reports the PP as inoperative.

NOTE 1: An operative PP is assumed to be ready to receive calls.

authentication: The process whereby a CTM subscriber is positively verified to be a legitimate user of the CTM service.

NOTE 2: Authentication is generally performed at call set-up, but may also be done at any other time (e.g. during a call).

bearer service: A type of telecommunication service that provides a defined capability for the transmission of signals between user-network interfaces.

NOTE 3: The DECT user-network interface corresponds to the top of the network layer (layer 3).

C-plane: The control plane of the DECT protocol stacks, which contains all of the internal DECT protocol control, but may also include some external user information.

NOTE 4: The C-plane stack always contains protocol entities up to and including the network layer.

call: All of the Network (NWK) layer processes involved in one network layer peer-to-peer association.

NOTE 5: Call may sometimes be used to refer to processes of all layers, since lower layer processes are implicitly required.

DECT network: A network that uses the DECT air interface to interconnect a local network to one or more portable applications. The logical boundaries of the DECT network are defined to be at the top of the DECT network layer.

NOTE 6: A DECT network is a logical grouping that contains one or more fixed radio terminations plus their associated portable radio termination. The boundaries of the DECT network are not physical boundaries.

external handover: The process of switching a call in progress from one fixed part to another fixed part.

Fixed Part (DECT Fixed Part) (FP): A physical grouping that contains all of the elements in the DECT network between the local network and the DECT air interface.

NOTE 7: A DECT FP contains the logical elements of at least one FT, plus additional implementation specific elements.

Fixed radio Termination (FT): A logical group of functions that contains all of the DECT processes and procedures on the fixed side of the DECT air interface.

NOTE 8: A FT only includes elements that are defined in the DECT Common Interface (CI) standard. This includes radio transmission elements together with a selection of layer 2 and layer 3 elements.

geographically unique identity: This term relates to FP identities, Primary Access Rights Identities (PARIs) and Radio Fixed Part Identities (RFPIs). It indicates that two systems with the same PARI, or respectively two Radio Fixed Parts (RFPs) with the same RFPI, can not be reached or listened to at the same geographical position.

NOTE 9: For PARI and RFPI see abbreviations.

global network: A telecommunication network capable of offering a long distance telecommunication service.

NOTE 10: The term does not include legal or regulatory aspects, nor does it indicate if the network is a public or a private network.

globally unique identity: The identity is unique within DECT (without geographical or other restrictions).

handover: The process of switching a call in progress from one physical channel to another physical channel.

NOTE 11: There are two physical forms of handover, intra-cell handover and inter-cell handover.

incoming call: A call received at a PP.

inter-cell handover: The switching of a call in progress from one cell to another cell.

internal handover: Handover processes that are completely internal to one FT. Internal handover reconnects the call at the lower layers, while maintaining the call at the NWK layer.

NOTE 12: The lower layer reconnection can either be at the Data Link Control (DLC) layer (connection handover) or at the MAC layer (bearer handover).

interoperability: The capability of FPs and PPs, that enable a PP to obtain access to teleservices in more than one location area and/or from more than one operator (more than one service provider).

interoperator roaming: Roaming between FP coverage areas of different operators (different service providers).

Interworking Unit (IWU): A unit that is used to interconnect sub networks.

NOTE 13: The IWU will contain the interworking functions necessary to support the required sub network interworking.

intra-cell handover: The switching of a call in progress from one physical channel of one cell to another physical channel of the same cell.

intraoperator roaming: Roaming between different FP coverage areas of the same operator (same service provider).

Local Network (LNW): A telecommunication network capable of offering local telecommunication services.

NOTE 14: The term does not include legal or regulatory aspects, nor does it indicate if the network is a public network or a private network.

locally unique identity: A unique identity within one FP or location area, depending on application.

location area: The domain in which a PP may receive (and/or make) calls as a result of a single location registration.

location registration: The process whereby the position of a DECT PT is determined to the level of one location area, and this position is updated in one or more databases.

NOTE 15: These databases are not included within a DECT FT.

MAC Connection (CONNECTION): An association between one source MAC Multi-Bearer Control (MBC) entity and one destination Medium Access Control (MAC) Multi-Bearer Control (MBC) entity. This provides a set of related MAC services (a set of logical channels), and it can involve one or more underlying MAC bearers.

outgoing call: A call originating from a PP.

Portable Application (PA): A logical grouping that contains all the elements that lie beyond the DECT network boundary on the portable side.

NOTE 16: The functions contained in the PA may be physically distributed, but any such distribution is invisible to the DECT network.

Portable Part (DECT Portable Part) (PP): A physical grouping that contains all elements between the user and the DECT air interface. PP is a generic term that may describe one or several physical pieces.

NOTE 17: A DECT PP is logically divided into one PT plus one or more PAs.

Portable radio Termination (PT): A logical group of functions that contains all of the DECT processes and procedures on the portable side of the DECT air interface.

NOTE 18: A PT only includes elements that are defined in the DECT CI standard. This includes radio transmission elements (layer 1) together with a selection of layer 2 and layer 3 elements.

Radio Fixed Part (RFP): One physical sub-group of a FP that contains all the radio end points (one or more) that are connected to a single system of antennas.

roaming: The movement of a PP from one FP coverage area to another FP coverage area, where the capabilities of the FPs enable the PP to make or receive calls in both areas.

NOTE 19: Roaming requires the relevant FPs and PP to be interoperable.

subscription registration: The infrequent process whereby a subscriber obtains access rights to one or more FPs.

NOTE 20: Subscription registration is usually required before a user can make or receive calls.

supplementary service: a service that modifies or supplements a basic telecommunications service.

teleservice: a type of telecommunications service that provides the complete capability, including terminal equipment functions, for communication between users, according to protocols that are established by agreement.

3.2 Abbreviations

For the purposes of this ETS, the following abbreviations apply:

| | |
|-------|--|
| AC | Authentication Code |
| ADPCM | Adaptive Differential Pulse Code Modulation |
| ARC | Access Rights Class |
| ARD | Access Rights Details |
| ARI | Access Rights Identity |
| B | Business environment |
| BCD | Binary Coded Decimal |
| CAP | CTM Access Profile |
| CC | Call Control |
| CI | Common Interface |
| CLIP | Calling Line Identification Presentation |
| CTM | Cordless Terminal Mobility |
| D | DECT reference point |
| DECT | Digital Enhanced Cordless Telecommunications |
| DLC | Data Link Control |
| DSAA | DECT Standard Authentication Algorithm |
| DSCA | DECT Standard Cipher Algorithm |
| DTMF | Dual Tone Multi-Frequency |
| EMC | Equipment Manufacturer Code |
| FLEN | Frame Length |
| FP | Fixed Part |
| FT | Fixed radio Termination |
| GAP | Generic Access Protocol |
| IE | Information Element |
| IPEI | International Portable Equipment Identity |
| IPUI | International Portable User Identity |
| ISDN | Integrated Services Digital Network |
| IWU | Interworking Unit |
| KS' | FP authentication Session Key |
| KS | PP authentication Session Key |
| LA | Location Area |
| LAI | Location Area Identification |
| LAL | Location Area Level |

| | |
|------|---|
| LCE | Link Control Entity |
| LNW | Local Network |
| MAC | Medium Access Control |
| MBC | Multi-Bearer Control |
| MM | Mobility Management, a NWK layer functional grouping |
| MWI | Message Waiting Indication |
| NWK | Network, Layer 3 of the DECT protocol stack |
| P | Public (environment) |
| PA | Portable Application |
| PAP | Public Access Profile |
| PARI | Primary Access Rights Identity |
| PARK | Portable Access Rights Key |
| PHL | Physical Layer |
| PLI | Park Length Indicator |
| PMID | Portable part MAC Identity |
| PP | Portable Part |
| PSN | Portable equipment Serial Number |
| PT | Portable radio Termination |
| PUN | Portable User Number |
| PUT | Portable User Type |
| R | Residential environment |
| RES | A Response calculated by a PP |
| RFP | Radio Fixed Part |
| RFPI | Radio Fixed Part Identity |
| RS | A value used to establish authentication session keys |
| SAP | Service Access Point |
| SAPI | Service Access Point Identifier |
| SARI | Secondary Access Rights Identity |
| SS | Supplementary Services |
| TARI | Tertiary Access Rights Identity |
| TI | Transaction Identifier |
| TPUI | Temporary Portable User Identity |
| UAK | User Authentication Key |
| UPI | User Personal Identification |

3.3 Symbols

The symbols defined in this subclause are applied for procedures, features, services in this ETS if not explicitly otherwise stated. The interpretation of status columns in all tables is as follows:

- M for mandatory to support (provision mandatory, process mandatory);
- O for optional to support (provision optional, process mandatory);
- I for out-of-scope (provision optional, process optional) not subject for testing;
- C for conditional to support (process mandatory);
- N/A for not-applicable (in the given context the specification makes it impossible to use this capability).

Provision mandatory, process mandatory means that the indicated feature, service or procedure shall be implemented as described in this ETS, and may be subject to testing.

Provision optional, process mandatory means that the indicated feature, service or procedure may be implemented, and if implemented, the feature, service or procedure shall be implemented as described in this ETS, and may be subject to testing.

NOTE: The used notation is based on the notation proposed in ISO/IEC 9646-7 [17].

4 Introduction

This profile is an extension of ETS 300 444 [12] covering the requirements for CTM phase 2.

In the following clauses only differences with respect to ETS 300 444 [12] are explicitly mentioned.

5 Feature definitions

For the purposes of this ETS, the feature definitions in the following subclauses apply.

The reference given in parentheses after the name of a feature is the item reference used in the tables of this ETS.

5.1 Network (NWK) features

The following differences from the GAP are applicable.

DECT external handover (CAP-N.1): External handover is the process of switching a call in progress from one Fixed Part (FP-1) to another Fixed Part (FP-2). This means the handover occurs between two independent systems, where each system has its own lower layers of protocol and has an independent set of network layer Service Access Points (SAPs). To make external handover possible, a common management entity above the two fixed terminations is necessary.

Emergency call (CAP-N.2): This service feature enables a user to make an emergency call even without a valid subscription, i.e. a fast and easy means of giving information about an emergency situation to the appropriate emergency organization (e.g. fire service, police and ambulance).

Display management (CAP-N.3): This feature enables a user to receive short alphanumeric indications displayed on the screen terminal. These indications could be associated with supplementary or value added services.

Message waiting indication (CAP-N.4): This feature enables a user to receive an indication of the status of a message server (e.g. a voice mailbox) to which the user has access to.

Detach (CAP-N.5): This feature enables a PT to report to the FT that the PT is not ready to receive calls.

Enhanced location registration (CAP-N.6): This feature enables automatic location registration of PT at expected intervals of time.

On-air modification of user parameters (CAP-N.7): This feature enables the FT to modify the active subscription data of the PT.

5.1.1 Application features

See ETS 300 444 [12].

6 Service definitions

For the purposes of this ETS, the following service definitions apply.

6.1 DLC service definitions

See ETS 300 444 [12].

6.2 Medium Access Control (MAC) service definitions

The following differences from the GAP are applicable.

Tertiary Access Rights Identity (TARI) support (CAP-M.1): The ability to support in addition to the primary Access Rights Identity (ARI) and secondary ARIs tertiary ARIs that the FT does not broadcast and are only available to PT as a Yes/No answer upon a request including the wanted ARI. These may be used to reflect an inter-operators agreement allowing a portable to access more than one operator or services through FT.

RFP status (CAP-M.2): A service which indicates to the PP the status (busy or clear) of the RFP or the system (FP).

Extended fixed part capabilities (CAP-M.3): A service which indicates to the PP the extended capabilities of the FP.

7 Interoperability requirements

7.1 General

The tables listed in this subclause define all the protocol elements i.e. features, services, and procedures which are mandatory, optional, and conditional under the provision of another protocol element, or out of the scope of this ETS, or in some context not-applicable according to the definition of the status column as defined in subclause 3.3 for the CAP FP and PP. All optional elements shall be process mandatory according to the procedures described in this ETS.

Protocol elements defined as mandatory, optional or conditional in this subclause shall further be defined in clauses 8, 9, 10, 11, 12, 13 and 14 in detail either explicitly and/or as references to the DECT base standard, ETS 300 175, parts 2 to 8 [2] to [8] and ETS 300 176 [9].

The requirements of TBR 6 [10], TBR 10 [11] and TBR 22 [13] shall be met by all equipment conforming to this ETS.

7.2 NWK features

Table 1: NWK features status

| Feature supported | | | | | | | |
|--|---|----------|----------|----|--------|---|---|
| Item no. | Name of feature | CAP Ref. | GAP Ref. | PT | Status | | |
| | | | | | FT | R | B |
| N.11 | Location registration | | 4.1 | M | O | M | M |
| N.20 | Terminate access rights FT initiated | | 4.1 | M | O | O | M |
| N.30 | Calling Line Identification Presentation (CLIP) | | 4.1 | M | O | O | M |
| CAP-N.1 | DECT External handover | 5.1 | | M | O | O | M |
| CAP-N.2 | Emergency call | 5.1 | | M | O | O | M |
| CAP-N.3 | Display Management (note) | 5.1 | | M | O | O | M |
| CAP-N.4 | Message Waiting Indication | 5.1 | | M | O | O | M |
| CAP-N.5 | Detach | 5.1 | | M | O | O | M |
| CAP-N.6 | Periodic location registration | 5.1 | | M | O | O | M |
| CAP-N.7 | On-air modification of user parameters | 5.1 | | M | O | O | O |
| NOTE: The PT is not mandated to support a physical display. The PT shall indicate its display capabilities within the <display capability> field of a <<terminal capability>> information element. | | | | | | | |

7.3 DLC services

See subclause 6.3 of ETS 300 444 [12].

7.4 MAC services

Table 2: MAC services status

| Service supported | | | | | | | |
|-------------------|----------------------------------|----------|----------|----|--------|---|---|
| Item no. | Name of service | CAP Ref. | GAP Ref. | PT | Status | | |
| | | | | | R | B | P |
| CAP-M.1 | TARI support | 6.2 | | O | O | O | O |
| CAP-M.2 | RFP status | 6.2 | | M | O | M | M |
| CAP-M.3 | Extended fixed part capabilities | 6.2 | | M | O | O | M |

7.5 Physical Layer (PHL) services

See subclause 6.5 of ETS 300 444 [12].

7.6 Application features

See subclause 6.6 of ETS 300 444 [12].

7.7 NWK feature to procedure mapping

Table 3: NWK feature to procedure mapping

| Feature/Procedure mapping | | | | | | | |
|--|--|----------|----------|----|--------|-----|-----|
| Feature | Procedure | CAP Ref. | GAP Ref. | PT | Status | | |
| | | | | | R | B | P |
| N.11 Location registration | | | 4.1 | M | O | M | M |
| N.20 Terminate access rights FT initiated | | | 4.1 | M | O | O | M |
| | FT authentication | | 8.23 | M | M | M | M |
| N.30, Calling Line Identification Presentation (CLIP) | | | 4.1 | M | O | O | M |
| | Incoming call request | | 8.12 | M | M | M | M |
| CAP-N.1, DECT External handover | | 5.1 | | M | O | O | M |
| | Handover candidate indication | 9.1.1.1 | | M | M | M | M |
| | Handover candidate retrieval | 9.1.1.2 | | M | O | O | O |
| | Target FP selection | 9.1.2 | | M | N/A | N/A | N/A |
| | Handover reference indication | 9.1.3.1 | | M | C1 | C1 | C1 |
| | Handover reference retrieval | 9.1.3.2 | | M | C2 | C2 | C2 |
| | External handover call setup | 9.1.4 | | M | M | M | M |
| | Ciphering procedure PT initiated | 9.1.5.1 | | O | C3 | C3 | C3 |
| | Ciphering procedure FT initiated | 9.1.5.2 | | M | C4 | C4 | M |
| | U-plane handling | 9.1.6 | | M | O | M | M |
| CAP-N.2, Emergency call | | 5.1 | | M | O | O | M |
| | Emergency call setup | 9.2 | | M | M | M | M |
| CAP-N.3, Display Management | | 5.1 | | M | O | O | M |
| | Display | 9.3 | | M | M | M | M |
| | Terminal capability indication | 9.4 | | M | M | M | M |
| CAP-N.4, Message Waiting Indication | | 5.1 | | M | O | O | M |
| | Message waiting indication | 9.7 | | M | M | M | M |
| CAP-N.5, Detach | | 5.1 | | M | O | O | M |
| | Detach | 9.5 | | M | M | M | M |
| CAP-N.6, Periodic location registration | | 5.1 | | M | O | O | M |
| | Enhanced location registration | 9.6 | | M | M | M | M |
| CAP-N.7, On-air modification of user parameters | | 5.1 | | M | O | O | O |
| | On-air modification of user parameters | 9.8 | | M | M | M | M |
| | FT authentication | | 8.23 | M | M | M | M |
| C1 | IF procedure 9.1.3.2 supported THEN O ELSE M. | | | | | | |
| C2 | IF procedure 9.1.3.1 supported THEN O ELSE M. | | | | | | |
| C3 | IF feature N.27 of ETS 300 444 [12] THEN M ELSE O. | | | | | | |
| C4 | IF feature N.17 of ETS 300 444 [12] THEN M ELSE O. | | | | | | |

7.8 Service to procedure mapping

7.8.1 DLC service to procedure mapping

See subclause 6.8.1 of ETS 300 444 [12].

7.8.2 MAC service to procedure mapping

Table 4: MAC service to procedure mapping

| Service/Procedure mapping | | | | | | | |
|---|----------------------------------|----------|----------|----|--------|---|---|
| Service | Procedure | CAP Ref. | GAP Ref. | PT | Status | | |
| | | | | | R | B | P |
| CAP-M.1 TARI support | | 6.2 | | O | O | O | O |
| | Non-continuous broadcast | 11.3 | | M | M | M | M |
| CAP-M.2 RFP status | | 6.2 | | M | O | M | M |
| | RFP status | 11.4 | | M | M | M | M |
| CAP-M.3 Extended fixed part capabilities | | 6.2 | | M | O | O | M |
| | Extended fixed part capabilities | 11.5 | | M | M | M | M |

7.8.3 Application feature to procedure mapping

Table 5: Application feature to procedure mapping

| Feature/Procedure mapping | | | | | | | |
|--|----------------------|----------|----------|----|--------|-----|-----|
| Feature | Procedure | CAP Ref. | GAP Ref. | PT | Status | | |
| | | | | | R | B | P |
| A.2 Multiple subscription registration | | | 4.2 | M | N/A | N/A | N/A |
| | Subscription control | 15.2 | 14.1 | M | N/A | N/A | N/A |

7.9 General requirements

See subclauses 6.9.1 to 6.9.7 of ETS 300 444 [12].

7.9.1 Coexistence of MM and CC procedures

In addition to subclause 6.9.6 of ETS 300 444 [12], the following definition regarding features (CAP-N.5) and (CAP-N.7) shall apply.

Table 6

| Feature | Procedure | Mandatory support in CC state |
|-----------|--|-------------------------------|
| (CAP-N.5) | Detach | All states |
| (CAP-N.7) | On-air modification of user parameters | T (F) -00 |

8 Procedure description

Clauses 9 to 15 define the process mandatory procedures which are in the scope of the CAP. Each procedure (if appropriate) is divided into three parts:

- a) normal (i.e. successful case). This part defines the functions and respective protocol element values in normal operation;
- b) associated procedure(s). This is an integral part of the actual procedure (if defined in this ETS) i.e. if a procedure is being declared to be supported, the respective entity shall also support the associated procedures, e.g. timer management, in the subclause following the description of the normal case;
- c) exceptional case(s). This is an integral part of the actual procedure (if defined in this ETS) i.e. if a procedure is being declared to be supported, the respective entity shall also support the exception handling defined in the subclause following the description of the normal case.

All protocol elements listed in the following clauses are process mandatory i.e. the FT and PT depending on their role in the procedure shall send or shall be capable of receiving and processing the relevant protocol elements as listed in the respective tables if not explicitly stated as being optional.

The primitives used in procedure descriptions are defined only for the purpose of describing layer-to-layer interactions. The primitives are defined as an abstract list of parameters, and their concrete realization may vary between implementations. No formal testing of primitives is intended. The primitive definitions have no normative significance.

9 NWK layer procedures

This clause specifies the NWK layer procedures, messages and IEs required in the CAP.

This profile does not prevent any PT or FT transmitting or receiving and processing any other NWK layer message or IE not specified in the profile. A PT or FT receiving an unsupported NWK layer message or IE which it does not recognize shall ignore it, as specified in clause 17 of ETS 300 175-5 [5].

9.1 External handover procedures

9.1.1 Handover candidate procedure

FP-1 shall only indicate handover candidates to which the PP has access using its active subscription.

NOTE: The above implies that the PP does not need to analyse the Secondary Access Rights Identities (SARIs) and/or TARIs supported by FP-2 prior to attempting external handover. Likewise, the PP need not analyse the external handover bit broadcast by FP-2 prior to attempting external handover.

9.1.1.1 Handover candidate indication

The procedure shall be performed as defined in subclause 15.7.1.2 of ETS 300 175-5 [5]. The following text together with the associated subclauses define the mandatory requirements with regard to this ETS.

The FP shall only apply CC- messages for the handover candidate indication. The indicated handover candidates are valid until the release of the call or until the successful completion of an external handover.

In case of external handover, FP-2 shall send the <<ext_h/o_indicator>> i.e. within a CC-INFO message after successful completion of the external handover procedure. Only one value is requested to be stored in the PP.

The PP shall be able to perform external handover between FPs which indicate 2 or 3 in the <SYNC> field of the <<ext_h/o_indicator>> .

NOTE: Successful completion of an external handover means, that the handover has been accepted as defined in subclause 15.7.4.3 of ETS 300 175-5 [5].

Table 7: Coding of <<Ext h/o indicator>> in call establishment CC messages

| Information element | Field within the information element | Standard values within the field/IE | Normative action/comment |
|-----------------------|--------------------------------------|-------------------------------------|--|
| <<Ext h/o indicator>> | | | |
| | <OID> | 0 | Other fixed part IDs not available using parameter retrieval procedure |
| | | 1 | Other fixed part IDs available using parameter retrieval procedure |
| | <SYNC> | All | |
| | <Length indicator> | All | |

9.1.1.2 Handover candidate retrieval

The procedure shall be performed as defined in subclause 15.7.1.3 of ETS 300 175-5 [5]. The following text together with the associated subclauses define the mandatory requirements with regard to this ETS.

The PP shall not invoke this procedure if the <<ext h/o indicator>> has not yet received or if the <<ext h/o indicator>> has been received with the OID value set to "0".

If the PP sends a {MM-INFO-REQUEST} message with an <<info-type>> IE indicating "external handover parameters", the FP shall also include a handover reference in a <<network parameter>> IE unless the handover reference is not required. In this case the FP shall inform the PP including in the response a <<network parameter>> IE with the value "handover reference not required".

9.1.1.2.1 Exceptional cases

9.1.1.2.1.1 Failure of the PP handover candidate retrieval attempt

Upon receipt of a {MM_INFO_REJECT} or when an indication for link release is received from the DLC layer or upon expiry of P-<MM_info.1>, the PP shall consider the procedure as failed. For target FP selection, the PP shall then either:

- use the <length indicator> as received during handover candidate indication; or
- repeat the handover candidate retrieval procedure.

9.1.2 Target FP selection

The procedure shall be performed as defined in subclause 15.7.1.4 of ETS 300 175-5 [5]. The following text together with the associated subclauses define the mandatory requirements with regard to this ETS.

If the handover candidate retrieval procedure is not allowed (OID = 0) or the PP has already detected some candidates for handover, the PP determines which FPs it may attempt external handover to by comparing the PARI of the FP in use with the PARIs of candidate FPs and determining if they match in the bits indicated by the "ext h/o length indicator" derived from the <<ext h/o indicator>> IE.

9.1.3 Handover reference procedure

9.1.3.1 Handover reference indication

The procedure shall be performed as defined in subclause 15.7.2.2 of ETS 300 175-5 [5].

9.1.3.2 Handover reference retrieval

The procedure shall be performed as defined in subclause 15.7.2.3 of ETS 300 175-5 [5]. The following text together with the associated subclauses define the mandatory requirements with regard to this ETS.

If the PP has not received the <<network parameter>> indicating "handover reference not required" and has not received the <<network parameter>> in a CC message it shall perform the handover reference retrieval procedure as soon as the call enters in the active state to give the time to the current FP to send the answer before the connection is lost.

The <<info type>> value used by the PP to request the procedure may be both "handover reference" or "external handover parameters". When a FP that has sent the "OID" bit set to 0 receives the {MM-INFO-REQUEST} with the <<info type>> value set to "external handover parameters" it responds by sending only the handover reference within a <<network parameter>> to the PP.

When the FP has set the OID-bit to "1" and receives a {MM-INFO-REQUEST} message with an <<info-type>> IE indicating "external handover parameters", the FP shall also include one or more <<fixed-identity>> IEs to identify to which FP the external handover may be attempted.

If the "handover reference" is not required by the FP, the FP shall inform the PP by including in the response a <<network parameter>> IE with the value "handover reference not required".

Regardless of whether the indication or the retrieval procedure is used, the provided handover reference value is valid until the release of the call.

By default, the handover value remains valid after the successful completion of an external handover. In case updating of the handover reference value is desired upon external handover, FP-2 should indicate a new value within a CC-INFO message following the CC-CONNECT-ACK message.

Table 8: Values used within the {MM-INFO-REQUEST} message

| Information element | Field within the information element | Standard values within the field/IE | Normative action/comment |
|---------------------|--------------------------------------|-------------------------------------|------------------------------|
| <<Info type>> | | | |
| | <Parameter type> | 8 | External handover parameters |
| | | 10 | Handover reference |

9.1.3.2.1 Exceptional cases

9.1.3.2.1.1 Failure of the PP handover reference retrieval attempt

Upon receipt of a {MM_INFO_REJECT} or when an indication for link release is received from the DLC layer or upon expiry of P-<MM_info.1>, the PP shall consider the procedure as failed.

The PP shall only attempt an external handover when it has either received "handover reference" or the indication "handover reference not required".

9.1.4 External handover call setup

The procedure shall be performed as defined in subclause 15.7.4 of ETS 300 175-5 [5]. The following text together with the associated subclauses define the mandatory requirements with regard to this ETS.

The PP shall only initiate the external handover call setup procedure towards FP-2 if the associated call is in active phase; meaning that the CC- transaction to FP-1 is in state T-10: "ACTIVE".

For the initiation of this procedure the outgoing call request procedure shall be used, see subclause 8.2 of ETS 300 444 [12] with the following replacement to the {CC-SETUP} message:

Table 9: Values used within the {CC-SETUP} message for external handover call

| Information element | Field within the information element | Standard values within the field/IE | Normative action/comment |
|-----------------------|--------------------------------------|-------------------------------------|--------------------------------|
| <<Basic service>> | | | |
| | <Call class> | 12 | External handover call setup |
| | <Basic service> | 0 | |
| <<Network parameter>> | | | Optional |
| | <Discriminator> | All | |
| | <Data> | All | Allowed length if present 1-10 |

9.1.4.1 Associated procedures

9.1.4.1.1 Transaction identifier handling

The transaction identifier value for a CC call shall always be assigned the lowest free number as defined in subclause 6.9.2 of ETS 300 444 [12].

NOTE: When a call has been assigned the transaction identifier value "0", the external handover call setup will be assigned the transaction identifier value "1" and a subsequent external handover setup which regards to a subsequent handover will be assigned the transaction identifier value "0".

9.1.4.2 Exceptional cases

9.1.4.2.1 Abnormal link release on FP-1 leg

Upon receipt of an indication from the DLC layer regarding link release of the link to FP-1 before the handover request to FP-2 has been confirmed as defined in ETS 300 175-5 [5], subclause 15.7.4.2, the PP shall proceed as defined in subclause 15.7.4 of ETS 300 175-5 [5] without the need of releasing the old connection as defined in subclause 15.7.4.5 of ETS 300 175-5 [5].

9.1.4.2.2 Normal call release on FP-2 leg

After the handover has been accepted as defined in subclause 15.7.4.3 of ETS 300 175-5 [5], and the user or the network releases the call normally, normal call release procedure as defined in ETS 300 444 [12], subclause 8.7 is used with regard to FP-2.

In the case that the old connection to FP-1 has not been released yet, the PP shall also release the old connection using the abnormal call release as defined in ETS 300 444 [12], subclause 8.8.

9.1.4.2.3 Abnormal link release on FP-2 leg

Upon receipt of an indication from the DLC layer regarding link release of the link to FP-2 before the handover request to FP-2 has been confirmed as defined in ETS 300 175-5 [5], subclause 15.7.4.2, the PP shall consider the handover procedure as failed and shall remain connected to the FP-1. The PP shall not erase the handover candidate/handover reference for use with FP-1.

In the case that the handover request to FP-2 has already been confirmed when receiving the link release indication, but the PP has not yet released the old link to FP-1, the PP shall also either switch back to the old connection or release the old connection using the abnormal call release as defined in ETS 300 444 [12], subclause 8.8.

9.1.5 Cipherring procedure

9.1.5.1 Cipherring procedure PT initiated

The procedure shall be performed as defined in the relevant parts of subclause 15.7.6 of ETS 300 175-5 [5].

The PP shall only initiate cipherring prior to the release of the old connection in case it supports cipherring on two connections.

9.1.5.2 Cipherring procedure FT initiated

The procedure shall be performed as defined in the relevant parts of subclause 15.7.6 of ETS 300 175-5 [5].

9.1.6 U-plane handling

The procedure shall be performed as defined in subclause 15.7.5 of ETS 300 175-5 [5].

9.2 Emergency call setup

The following text together with the associated subclauses define the mandatory requirements with regard to this ETS.

For the initiation of this procedure the outgoing call request procedure shall be used, see subclause 8.2 of ETS 300 444 [12] with the following replacement to the {CC-SETUP} message.

Table 10: Values used within the {CC-SETUP} message for emergency call

| Information element | Field within the information element | Standard values within the field/IE | Normative action/comment |
|-----------------------|--------------------------------------|-------------------------------------|---|
| <<Portable identity>> | <Type> | 16, 0 | International Portable Equipment Identity (IPEI), or, in case the PT has access based upon active subscription, may contain the corresponding IPUI |
| | <EMC> | All | Equipment manufacturer dependent |
| | <PSN> | All | Equipment manufacturer dependent |
| <<Fixed Identity>> | | | |
| | <Length of contents> | 0, 32 | Empty, or, in case the PT has access based upon active subscription, may contain the corresponding PARK. The PARK shall be used only in combination with the corresponding IPUI |
| | <Length of identity value> | All | |
| | <ARC + ARD> | All | |
| <<Basic service>> | | | |
| | <Call class> | 10 | Emergency call |
| PSN | Portable equipment Serial Number. | | |

The FP shall accept the {CC-SETUP} message without checking the <<Fixed Identity>> and <<Portable identity>> IE and proceed with the network layer procedures according to ETS 300 444 [12] subclauses 8.2, 8.6 and optionally subclauses 8.4 and 8.5. The FP-CC shall not enter the overlap sending state (F-02), moreover the FP shall not authenticate the PP.

NOTE: After establishment, the call should be routed to an emergency line of the local emergency centre. This may be carried out even by a residential or business FP by automatically dialling an emergency call number.

If the emergency call setup procedure leads into an abnormal call release according to ETS 300 444 [12] subclause 8.8 or if the FP rejects the outgoing call request according to subclause 8.2.2.3, the handset may search for another FP supporting emergency calls.

9.3 Display

The procedure shall be performed as defined in subclauses 10.2 and D.2.2 of ETS 300 175-5 [5]. The following text together with the associated subclauses define the mandatory requirements with regard to this ETS.

A <<DISPLAY>> IE may be included in any CC messages in the FT → PT direction except in {CC-NOTIFY} and {IWU-INFO} see ETS 300 175-5 [5], subclause 6.3.2.

Table 11: Values used within the <<DISPLAY>> IE in any message that include it

| Information element | Field within the information element | Standard values within the field/IE | Normative action/comment |
|---------------------|--------------------------------------|-------------------------------------|--|
| <<Multi display>> | | | |
| | <Display information> | 0CH, 20H, 23H, 2AH, 30H - 7FH | DECT standard characters = standard IA5 characters. For the actual supported values see <<Terminal capability>> I.E. |
| | | 02H, 03H, 08H - 0FH, 19H, 1AH | DECT control characters. For the actual supported values see <<Terminal capability>> I.E. |

9.4 Terminal capability indication

The following text together with the associated subclauses define the mandatory requirements with regard to this ETS.

For the initiation of this procedure the GAP Terminal capability indication procedure shall be used, see subclause 8.17 of ETS 300 444 [12] with the following modifications.

Table 12: Values used within the <<TERMINAL CAPABILITY>> IE

| Information element | Field within the information element | Standard values within the field/IE | Normative action/comment |
|-------------------------|--------------------------------------|-------------------------------------|------------------------------------|
| <<Terminal capability>> | | | |
| | <Tone capability> | All | |
| | <Display capability> | All | |
| | <Profile indicator_1> | "xxxxx11"B | CTM Access Profile (CAP) supported |
| | <Control codes> | All | |

9.5 Detach

The procedure shall be performed as defined in subclause 13.4.2 of ETS 300 175-5 [5]. The following text defines the mandatory requirements with regard to this ETS.

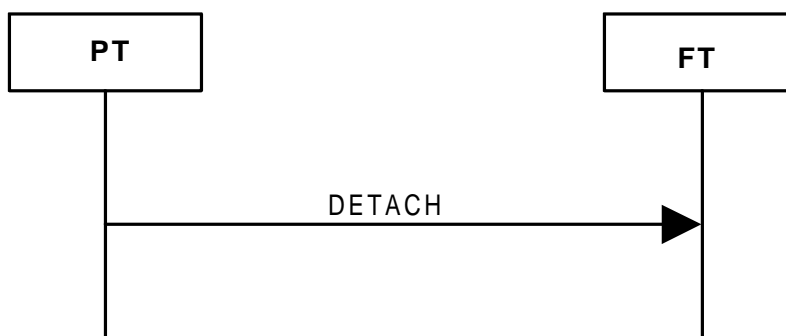


Figure 1: Detach

Table 13: Values used within the {DETACH} message

| Information element | Field within the information element | Standard values within the field/IE | Normative action/comment |
|--|--------------------------------------|-------------------------------------|--------------------------|
| <<Portable-identity>> | | | |
| | <Type> | 0 | IPUI |
| | <PUT> | All | |
| | <PUN> | All | |
| PUN: Portable User Number PUT: Portable User Type | | | |

9.6 Enhanced location registration

The following text together with the associated subclauses define the mandatory requirements with regard to this ETS.

To allow periodic location registration, the PT shall evaluate the <<Duration>> IE in {LOCATE-ACCEPT} messages.

For the initiation of this procedure the location registration procedure shall be used, see subclause 8.28 of ETS 300 444 [12] with the following addition to the {LOCATE-ACCEPT} message and subsequent modifications:

Table 14: Values used within {LOCATE-ACCEPT} message for enhanced location registration

| Information element | Field within the information element | Standard values within the field/IE | Normative action/comment |
|---------------------|--------------------------------------|-------------------------------------|--------------------------|
| <<Duration>> | | | |
| | <Lock limits> | 111 (binary) | No limits |
| | | 101 (binary) | Temporary user limit 1 |
| | | 110 (binary) | Temporary user limit 2 |
| | <Time limits> | 1 | Defined time limit 1 |
| | | 2 | Defined time limit 2 |
| | | 15 | Infinite |
| | <Time duration> | All | |

9.6.1 Exceptional case(s)

9.6.1.1 Failure of location registration procedure

Upon expire of <MM_locate.1> or indication for link released is received from the DLC layer, PT shall consider the procedure as failed. The PP shall maintain the existing LAL value. PT shall not re-transmit the {LOCATE-REQUEST} message. and shall not restart the timer <MM_locate.1> as part of the same procedure.

To avoid unfinished location registration due to exceptional cases like link failure or bad radio quality the P-IWU shall either repeat an unresponded location registration procedure until it receives a {LOCATE-ACCEPT} or {LOCATE-REJECT} message or attempt location registration in a different location area.

To enable the FT to control the duration until another location registration attempt, the PT shall evaluate the <<Duration>> if received in a {LOCATE-REJECT} message.

Table 15: Values used within {LOCATE-REJECT} message for enhanced location registration

| Information element | Field within the information element | Standard values within the field/IE | Normative action/comment |
|---------------------|--------------------------------------|-------------------------------------|--------------------------|
| <<Duration>> | <Lock limits> | 111 (binary) | No limits |
| | | 101 (binary) | Temporary user limit 1 |
| | | 110 (binary) | Temporary user limit 2 |
| | <Time limits> | 1 | Defined time limit 1 |
| | | 2 | Defined time limit 2 |
| | | 15 | Infinite |
| | <Time duration> | All | |

If the PT receives no response to {LOCATE-REQUEST}, it shall wait at least N700 seconds but no longer than N700 + N800 seconds, starting upon expiry of <MM_locate.1>, before re-attempting location registration in the same location area.

9.7 Message waiting indication

The procedure relates to the feature (**CAP-N.4**, see subclause 5.1) Message Waiting Indication and shall be performed as defined in subclause 10.4.2.3 of ETS 300 175-5 [5]. Basic services shall be coded as defined in ETS 300 196-1 [18].

The following text defines the mandatory requirements with regard to ETS 300 175-5 [5], ETS 300 196-1 [18] and ETS 300 745-1 [16].

Only the MWIIndicate operation definition shall apply to this ETS. The procedure defined supports different modes of invocation, as defined in ETS 300 745-1 [16].

The mode of invocation to be used by the FP is outside the scope of this ETS.

All MWIIndicate arguments defined in ETS 300 745-1 [16] may be used. However, the following minimum requirements apply for the FP and the PP:

- the FP shall send the 'basicService' argument to indicate the kind of message, 'basicService' elements shall be coded as defined in ETS 300 196-1 [18]. The PP shall support a separate MWI status for each of the following basic service values:
 - 1) voice messages shall be indicated using the "speech (1)" coding;
 - 2) text messages shall be indicated using the "teletex (33)" coding;
 - 3) other and unknown messages shall be indicated using the "allServices (0)" coding;
 all other codings are optional to understand for the PP;
- the FP may send the "controllingUserNumber" argument to indicate the party number of the corresponding message server. If the PP supports this, then the PP shall store the number and may use this to call the message server and the minimum PP storing requirement for this number shall be 10 octets (20 digits);
- the PP shall support the "numberOfMessages" argument which may be used to indicate how many messages for the specific Basic Service are waiting. The PP shall be capable to handle values up to 127.

9.7.1 MWIIndicate- activation

To activate the MWI status for a specific basicService, the FP shall send a {FACILITY} message including a <<Facility>> IE as defined in table 16.

NOTE: It is the responsibility of the FP to ensure that the MWI status information within the PP is up to date.

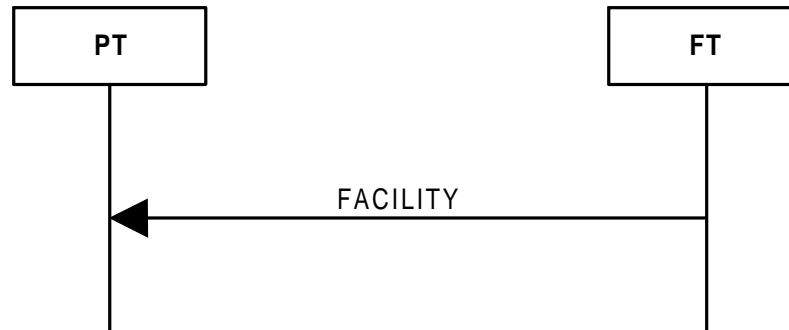


Figure 2: Facility message used for message waiting indication

Table 16: Values used within {FACILITY} message for message waiting indication

| Information element | Field within the information element | Standard values within the field/IE | Normative action/comment |
|---------------------|--------------------------------------|-------------------------------------|---|
| <<Facility>> | | | Codings defined in ETS 300 745-1 and ETS 300 196-1 |
| | <Service discriminator> | 17 | Discriminator for supplementary service applications |
| | <Component tag> | 161 | Component Tag = Invoke |
| | <Invoke Identifier tag> | 2 | |
| | <Operation Value > | | With regard to OBJECT IDENTIFIER for mWIIndicate |
| | <controllingUserNumber> | All | It is optional for the FP to include this information, it is optional for the PP to understand this information |
| | <basicService> | 0, 1, 33 | Unknown, speech, text messages |
| | <numberOfMessages> | 1..127 | It is optional for the FP to include this information |

NOTE: In order to facilitate the use of the controllingUserNumber for retrieving the waiting message, the FP should ensure it contains the complete party number e.g. including leading 0's

Regarding the maximum length of the {FACILITY} message the rules as defined in ETS 300 444 [12], subclause 6.9.3 shall apply.

Upon reception of a {FACILITY} message with a content as defined in table 16, the PP shall activate the MWI status for the specific Basic Service to the receiving user.

9.7.2 MWIIndicate- deactivation

To deactivate the indication of MWI for a specific basic service to the receiving user, the FP shall send a <<Facility>>-Information element with the "numberOfMessages" argument for the specific basic service set to zero, as defined in ETS 300 745-1 [16], subclause 9.5.1.1.

Table 17: Values used within {FACILITY} message for message waiting indication deactivation

| Information element | Field within the information element | Standard values within the field/IE | Normative action/comment |
|---------------------|--------------------------------------|-------------------------------------|--|
| <<Facility>> | | | Codings defined in ETS 300 745-1 [16] and ETS 300 196-1 [18] |
| | <Service discriminator> | 17 | Discriminator for supplementary service applications |
| | <Component Tag> | 161 | Component Tag = Invoke |
| | <Invoke Identifier tag> | 2 | |
| | <Operation Value > | | With regard to OBJECT IDENTIFIER for mWIIIndicate |
| | <basicService> | 0, 1, 33 | Unknown, Speech, Text messages |
| | <numberOfMessages > | 0 | |

Regarding the maximum length of the {FACILITY} message the rules as defined in ETS 300 444 [12], subclause 6.9.3 shall apply.

Upon reception of a {FACILITY} message with a content as defined in table 17, the PP shall deactivate the MWI status for the specific Basic Service to the receiving user.

9.7.3 Retrieval of the message

To call the message server, the PP shall use the outgoing call request as defined in subclause 8.2 of ETS 300 444 [12], indicating "Normal call setup". The PP may apply the party number of the message server, if provided, within one {CC-INFO} message as defined in ETS 300 444 [12], subclause 8.10.

NOTE: If no number is received, the PP may also apply a locally stored address.

9.8 On-air modification of user parameters

The procedure relates to the feature (**CAP-N.7**) (see subclause 5.1) On-air modification of user parameters and shall be performed as defined in subclause C.2.3.

The following text together with the associated subclauses define the mandatory requirement with regard to this ETS.

The procedure consists of two consecutive MM transactions: one access rights modify suggest and other obtaining access rights with its own independent transaction identifier.

Before accepting the on-air modification of user parameters, the PT shall authenticate the FT and if this authentication fails, the PT shall not modify the user parameters.

The following text defines the mandatory requirements with regard to this ETS.

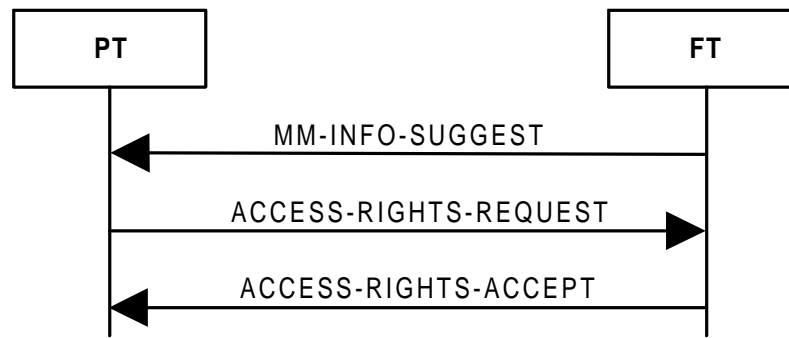


Figure 3: On air modification of user parameters

Table 18: Values used within the {MM-INFO-SUGGEST} message

| Information element | Field within the information element | Standard values within the field/IE | Normative action/comment |
|---------------------|--------------------------------------|-------------------------------------|------------------------------|
| <<Info-type>> | | | |
| | <ext> | 1 | |
| | <Parameter type> | 1 | Access rights modify suggest |

The PT shall initiate the obtaining access rights procedure, according to subclause 13.5.1, for the on-air-modification of user parameters after the receipt of the {MM-INFO-SUGGEST} message.

The {ACCESS-RIGHTS-REQUEST} message and the {ACCESS-RIGHTS-ACCEPT} message are defined in ETS 300 444 [12], subclause 8.30. The content of the {ACCESS-RIGHTS-REQUEST} message relates to the subscription data stored in the PP.

The PP shall substitute the stored IPUI, PARK and PLI with the corresponding data which is sent in the {ACCESS-RIGHTS-ACCEPT} message.

9.8.1 Exceptional cases

9.8.1.1 Collision with normal call procedure

The FP shall prohibit incoming calls during the "On-air modification of user parameters" procedure, the PP shall prohibit outgoing normal calls during this procedure.

In case of collision of a normal call attempt and modification of user parameter attempt the PP may ignore the {MM-INFO-SUGGEST} message with regard to ETS 300 175-5 [5], clause 17.

10 DLC layer procedures

The complete clause 9 of ETS 300 444 [12] forms the description of the DLC layer procedures for the CAP.

11 MAC layer procedures

11.1 General

The complete subclause 10.1 of ETS 300 444 [12] is part of the description of the MAC layer procedures for the CAP.

11.2 Downlink broadcast

The following text together with the associated subclauses define the mandatory requirements with regard to this ETS.

For the initiation of this procedure the downlink broadcast service shall be used, see subclause 10.2 of ETS 300 444 [12] with the following replacement of table 92 of subclause 10.2.4 of ETS 300 444 [12].

Table 92: Values used within SARI list contents

| MAC message | Field within the message | Standard values within the MAC message | Normative action/comment |
|------------------------|--------------------------|--|--|
| <<SARI list contents>> | | | |
| | <Qh> | 5 | |
| | <SARI list length> | All | |
| | <TARIs yes/no> | All | Relate to service TARI support (CAP-M.1, see subclause 5.1). |
| | <Black yes/no> | All | |
| | <ARI or black-ARI> | All | |

11.3 Non-continuous broadcast

The procedure shall be performed as defined in subclauses 9.3, 9.3.1 and 9.3.1.1 of ETS 300 175-3 [3].

The following text together with the associated subclauses define the mandatory requirements with regard to this ETS.

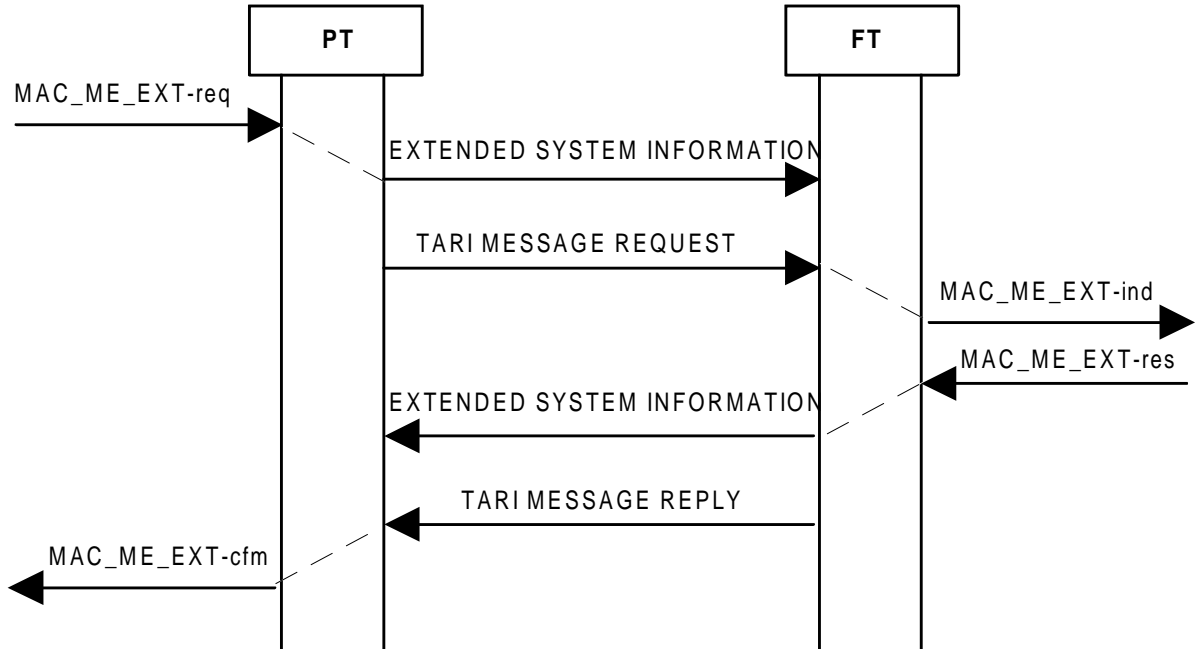


Figure 4: Non-continuous broadcast

11.3.1 Mt message

11.3.1.1 Extended system information

The following fields as defined in subclause 7.2.5.6 of ETS 300 175-3 [3] shall be supported by the PT and the FT.

Table 19: Values used within extended system information message

| MAC message | Field within the message | Standard values within the MAC message | Normative action/comment |
|----------------|--------------------------|--|--|
| <<Mt message>> | | | |
| | <Mt header> | 4 | "Broadcast and C/L services" |
| | <a b c d> | 14 | "Extended System Information; A-field procedure" |
| | <FMID> | All | |
| | <PMID> | All | |

11.3.1.2 TARI message

The following fields as defined in subclause 7.2.5.10 of ETS 300 175-3 [3] and subclause 5.6.6 of ETS 300 175-6 [6] shall be supported by the PT and the FT.

Table 20: Values used within TARI message request

| MAC message | Field within the message | Standard values within the MAC message | Normative action/comment |
|----------------------------|----------------------------|--|--------------------------|
| <<M _t message>> | | | |
| | <M _t header> | 8 | "TARI message" |
| | | | |
| | <PLI> | All | |
| | <PARK> | All | "ARC + ARD" |
| ARC | Access Rights Class | | |
| ARD | Access Rights Details | | |
| PLI | Park Length Indicator | | |
| PARK | Portable Access Rights Key | | |

Table 21: Values used within TARI message reply

| MAC message | Field within the message | Standard values within the MAC message | Normative action/comment |
|----------------------------|--------------------------|--|--|
| <<M _t message>> | | | |
| | <M _t header> | 8 | "TARI message" |
| | <CMD> | 1 | Valid ARI exists in TARI list |
| | | 0 | No valid ARI exists in TARI list |
| | <ARCs> | All | For each ARC, except for class A and class E, a separate bit indicates if the TARI list contains entries of this class |
| | <Identity field> | All | For CMD = 1, the identity field contains the valid ARI |

11.4 RFP status

The procedure shall be performed as defined in subclause 7.2.4.3.9 of ETS 300 175-3 [3].

Table 22: Values used within short page message

| MAC message | Field within the message | Standard values within the MAC message | Normative action/comment |
|------------------------|------------------------------|--|---|
| <<Short page message>> | | | |
| | <Extend flag> | 0, 1 | See subclause 10.3.1 of ETS 300 444 [12]. |
| | <BS SDU length indication> | 1 | See subclause 10.3.1 of ETS 300 444 [12]. |
| | <20 bits of BS channel data> | All | See subclause 10.3.1 of ETS 300 444 [12] |
| | <Information type> | 10 | RFP status, see subclause 11.4.1 |
| | <MAC layer information> | Corresponding information | |

Table 23: Values used within zero length page message

| MAC message | Field within the message | Standard values within the MAC message | Normative action/comment |
|------------------------------|-------------------------------------|--|--|
| <<Zero length page message>> | | | |
| | <Extend flag> | 0, 1 | See subclause 10.3.2 of ETS 300 444 [12] |
| | <BS SDU length indication> | 0 | See subclause 10.3.2 of ETS 300 444 [12] |
| | <20 least significant bits of RFPI> | All | See subclause 10.3.2 of ETS 300 444 [12] |
| | <Information type> | 10 | RFP status, see subclause 11.4.1 |
| | <MAC layer information> | Corresponding information | |

11.4.1 RFP status information

RFPs shall periodically send the "RFP status" (at least every 10 seconds).

RFP and PP shall support the following values of field "RFP status" (bits a36 to a39): "xxx0" (RFP clear), "xxx1" (RFP busy), "xx0x" (system clear) and "xx1x" (system busy).

"RFP busy" means that the RFP recommends the PP to access another RFP.

"System busy" means that the FP recommends the PP to access another FP.

If the PP knows the actual status of an FP by having received "system busy" from the RFP where the PP is locked to, the PP shall not send access_request messages towards this FP. The PP should try to access another FP instead.

If the PP knows the actual status of an RFP by having received "RFP busy" from the RFP where the PP is locked to, the PP shall not send access_request messages towards this RFP. The PP shall try to access another RFP instead.

The PP does not have to wait for the RFP status information before performing a bearer setup procedure towards an RFP, especially when performing an intercell handover.

To prevent a PP to perform an intercell handover towards an RFP which is "busy", a "busy" RFP should send a "release" message as an immediate answer on reception of an intercell (connection or bearer) handover_request message. Immediate means in the frame after reception of the intercell handover_request message. Therefore this immediate "release" message indicates the "RFP busy" state of an RFP and a PP can try a next alternative RFP if possible.

11.5 Extended fixed part capabilities

The procedure shall be performed as defined in subclauses 7.2.3.5 and 7.2.3.1 of ETS 300 175-3 [3].

Table 24: Values used within extended fixed part capabilities message

| MAC message | Field within the message | Standard values within the MAC message | Normative action/comment |
|------------------------------|--------------------------|--|--------------------------|
| <<Extended FP capabilities>> | | | |
| | <Qh> | 4 | |

For the setting of the extended higher layer information bits see subclause 14.8.

12 Physical layer requirements

12.1 General

The complete clause 11 of ETS 300 444 [12] is part of the description of the PHL procedures for the CAP with the following modifications.

12.2 External handover

A PP supporting external handover shall be capable of performing external handover between two RFPs belonging to different FPs which are multiframe synchronized with a reference timer difference up to P100 μ sec .

A PP may be capable of supporting external handover between less accurately synchronized or not synchronized RFPs.

13 Requirements regarding the speech transmission

13.1 General

The applicable requirements specified in ETS 300 175-8 [8] and TBR10 [11] shall be applied.

13.2 Reference to GAP

The complete clause 12 of ETS 300 444 [12] is part of the description of the requirements regarding the speech transmission for the CAP.

14 Management procedures

14.1 General

The complete clause 13 of ETS 300 444 [12] is part of the description of the management procedures for the CAP with the following modifications.

14.2 Location registration initiation

The initiation of the location registration procedure (PT initiated) is dependent on the value of call attribute a₃₈ broadcast by the FT, i.e. if set to "1", the PT initiates the location registration procedure in the following cases:

- immediately after a successful access rights procedure;
- upon change of location area; latest immediately after entering the CC null state (T-00);
- upon power-up and after the first lock to a system which the PT has access rights to;
- upon expire of the time limit indicated in the <<DURATION>> IE received during the last successful location registration on the same system or received inside a {LOCATE-REJECT} message as defined in subclause 9.6.1.1;
- after losing synchronization (leaving the locked state) for the time defined by the <Lock limits> parameter indicated in the <<DURATION>> IE (see subclause 9.6) received during the last successful location registration on the same system;
- upon lock to a system after change of the active IPUI/PARK pair (i.e. change of actual subscription).

If the <<DURATION>> IE cannot be understood, the PT shall ignore the <<DURATION>> IE.

Location registration shall be performed regardless if the system has been accessed via a PARI, SARI or TARI.

If call attribute a₃₈ set to "0", the PT does not initiate the location registration procedure except upon receipt of "Locate suggest" in the parameter retrieval procedure initiated by the FT.

The FT may initiate and the PT may receive incoming calls without a location registration procedure. The initiation of the location registration procedure as defined in subclause 8.28 of ETS 300 444 [12] is always mandatory in the PT except when bit a₃₈ in the broadcast attributes, see subclause 13.6 table 102 of ETS 300 444 [12], is set to 0.

14.3 Assigned individual Temporary Portable User Identity (TPUI) management

Only one individual assigned TPUI shall be stored per subscription i.e. any new assignments of an individual assigned TPUI overwrites an existing individual assigned TPUI.

The PT shall always delete the old individual assigned TPUI immediately when entering a new location area prior the initiation of location registration procedure. The PT shall always delete the old individual assigned TPUI immediately when entering a new location area even if the location registration is not being performed i.e. the broadcast attribute a₃₈ is set to value "0", see subclause 13.6 table 102 of ETS 300 444 [12].

Upon detach TPUI shall be deleted in PT.

The default TPUI shall be derived from the allocated International Portable User Identity (IPUI). If no IPUI has been allocated, the TPUI shall be derived from IPUI N i.e. the IPEI.

The LCE-PAGE-REJECT message shall not be used to delete an assigned TPUI.

NOTE: To avoid ambiguities of assigned TPUIs/Portable part MAC Identities (PMIDs), assigned TPUIs should be unique within the entire FP rather than within location areas. See also note 2 in subclause 6.3.1 of ETS 300 175-6 [6].

14.4 Detach

Detach shall be performed immediately upon power-down of PT if the PT is still in range of the active subscription.

Detach shall be performed to an active subscription before change of subscription if the PT is still in the range of the previously active subscription.

If, in this case, location registration is supported on the new subscription, detach shall be performed to the active subscription prior to location registration to the new subscription.

The PT may not send the {DETACH} message to residential FTs.

14.5 External handover

The PT shall not initiate location registration during external handover.

The PT shall not perform an external handover within N500 seconds after the last successfully performed external handover.

The PT shall not initiate external handover procedure after N501 unsuccessful attempts within N500 seconds.

Regarding handover retrieval, the minimum PP storage requirement is 3 handover candidates.

14.6 Emergency call management

Emergency call is initiated by a special manual interworking at the MMI of a DECT PP. This may be the dialling of "112", pressing of a special "emergency call button", or selecting a menu-item.

After recognition of this manual interworking the PP may decide whether:

- a) to initiate the emergency call procedure; or
- b) to initiate a normal outgoing call (according to ETS 300 444 [12]) and dial automatically a (preconfigured) emergency call number.

Case b) is allowed only, when the PP is locked to a DECT FP where it has access-rights to;

Case a) if the PP is not synchronized to a FP which supports emergency calls, the PP starts to search for an FP which supports emergency calls. The PP recognizes this by reading the extended higher layer capabilities of the FP. Because it is most likely that a public DECT FP supports emergency calls, the PP tries first to synchronize to a public FP. The PP identifies a system being "public" using the identity ARC which is broadcast more often than the "emergency call supported" message by the RFPs. If there is no public FP supporting emergency calls available, the handset tries to search also for private FPs supporting emergency calls.

If a PP which is attempting an emergency calls is not in range of a FP where it has access-rights to, the PP is allowed to lock to every FP in range which supports emergency calls even when no emergency call is initiated. This will shorten the time for setting up emergency calls and makes it possible to indicate the availability of the emergency call to the user. If the PP is locked to a FP, to which it does not have access-rights to, the PP shall not initiate any other procedure than emergency call setup towards this FP.

14.7 PMID management

If the PP has a valid assigned individual TPUI, the PMID shall be this TPUI.

If the PP has not a valid assigned individual TPUI, the PMID shall be the arbitrary PMID. It may be derived from the IPUJ used for the MAC connection setup.

If a link has to be established for an external handover into a new location area, the arbitrary PMID shall be used for this link establishment.

A PP attempting an emergency call shall use the emergency call TPUI as defined in ETS 300 175-6 [6] subclause 6.3.1 as PMID value.

Within a link establishment procedure, the assigned PMID is recalculated for every connection setup attempt (during the connection setup procedure the assigned PMID shall not change); the arbitrary PMID is recalculated for every new bearer setup attempt.

The PT shall not update its PMID until the current DLC link is released even if a connection or bearer handover has taken place or the individual assigned TPUI has changed, e.g. due to change of the LA.

14.8 Broadcast attributes management

RFPs belonging to the same location area shall broadcast the same values of higher layer attributes at any given time (see annex F in ETS 300 175-5 [5]).

The CAP PP shall be capable to read and interpret at least the following broadcast attributes codings during locking procedure. In the locked state the PP may assume them as static.

Table 25: Broadcast attributes interpretation by the PP

| BIT Number | Attribute | Value | Note |
|------------|-----------------------------|-------|---|
| a45 | External handover supported | All | Relates to feature (CAP-N.1) (see subclause 5.1). |

Table 26: Extended higher layer capabilities interpretation by the PP

| BIT Number | Attribute | Value | Note |
|------------|--------------------------|-------|--|
| a40 | Emergency call supported | All | Relate to feature (CAP-N.2) (see subclause 5.1). |

14.9 Message waiting indication

The PT shall store the information which is received inside the <<FACILITY>> information element in volatile memory.

The PT shall delete this information upon power-down and upon change of subscription, i.e. changing of the active IPUJ/PARK pair.

15 Application procedures

15.1 General

The complete clause 14 of ETS 300 444 [12] is part of the description of the application procedures for the CAP with the following modifications.

15.2 Subscription control

The PP shall be capable of accepting a new subscription for the active IPUI and PARK pair, in order to change the access rights (i.e. overwriting the active subscription).

The active IPUI/PARK pair is the stored IPUI/PARK value that the PT is using to seek to get locked or is locked to.

The CAP PT shall be capable of storing at least four subscriptions i.e. 4 pairs of IPUI and PARK and associated subscription data.

Annex A (normative): System parameters

A.1 NWK layer constants

N500: external handover re-attempt value.
Mandated value is 8.

N501: unsuccessful external handover attempts within a defined time.
Mandated value is 5.

N700: location re-attempt time 1.
Mandated value is 20.

N800: location re-attempt time 2.
Mandated value is 60.

A.2 PHL constants

P100: maximum reference timer difference of multiframe synchronized RFPs belonging to different FPs among which external handover is supported.

Mandated value is 5.

Annex B (informative): PP locking procedure for on air subscription

This procedure is given in annex A of ETS 300 444 [12].

Annex C (normative): ETS 300 175 changes

C.1 General

This annex highlights the differences between this ETS and ETS 300 175 parts 1 to 8, [1] to [8], enforced by the current and future DECT standards and equipment development. All the changes are intended to be incorporated in the future third edition of the ETS 300 175. When the third edition of ETS 300 175 is released this annex may be removed.

C.2 Network layer

C.2.1 New codings in << Duration >> IE

ETS 300 175-5 [5], subclause 7.7.13:

The following replaces the "Lock limits coding (octet 3)" text of subclause 7.7.13 of ETS 300 175-5 [5]:

Lock limits coding (octet 3):

| Bits | 7 | 6 | 5 | Meaning |
|------|---|---|---|----------------------------------|
| | 1 | 0 | 1 | Temporary user limits 2 (note 1) |
| | 1 | 1 | 0 | Temporary user limits (note 1) |
| | 1 | 1 | 1 | No limits |

NOTE: "Temporary user limit" indicates that a time limit applies when the PP leaves the locked state with the relevant FP (see ETS 300 175-6 [6]).

C.2.2 <<Terminal capability>> IE coding

ETS 300 175-5 [5], subclause 7.7.41:

The following replaces the "Profile Indicator_1 Coding (Octet 4)" text of subclause 7.7.41 of ETS 300 175-5 [5]:

Profile Indicator_1 coding (octet 4):

| Bits | 7 | 6 | 5 | 4 | 3 | 2 | 1 | Meaning |
|------|---|---|---|---|---|---|---|--|
| | x | x | x | x | x | x | 1 | CAP supported |
| | x | x | x | x | 1 | x | | GAP/PAP supported |
| | x | x | x | 1 | x | x | | DECT/GSM interworking profile supported |
| | x | x | 1 | x | x | x | | ISDN supported |
| | x | x | 1 | x | x | x | | Data Services Profile E, Class 2 |
| | x | 1 | x | x | x | x | | Data Services Profile A/B, Class 2 |
| | 1 | x | x | x | x | x | | Multi-bearers supported for the Data Services Profiles |

C.2.3 Modification of access rights

In addition to the requirements in ETS 300 175-5 [5], subclause 5.6.5 the following applies:

Three procedures are defined, one for obtaining the access rights, one for terminating the access rights and one for modifying the access rights.

The procedure for modifying the access rights is used to change IPUI or PARK or PLI in the PT without user intervention.

In addition to the requirements in ETS 300 175-5 [5] subclause 6.3.6.23 the following applies:

This message is sent by the FT to provide information to the PT or to suggest an action to the PT, e.g. to perform location updating or access rights modification or an external handover.

In addition to the requirements in ETS 300 175-5 [5] subclause 13.5 the following new subclause applies:

13.5.3 Modification of access rights

Modification of access rights procedure is used by the FT to modify access rights stored in the PT without user intervention. The procedure for modifying access rights only modifies the active subscription data.

Procedure for modification of access rights:

Upon receiving a MM_INFO-req primitive the FT sends a [MM-INFO-SUGGEST] message, which contains an <<INFO-TYPE>> IE with the parameter type "access rights modify suggest". Optionally an <<IWU-TO-IWU>> IE can be included.

Upon receipt of the [MM-INFO-SUGGEST] message the PT issues a MM_INFO-ind primitive. If the parameter type "access rights modify suggest" is indicated in the <<INFO-TYPE>> IE, the PT shall initiate the obtaining access rights procedure as described in subclause 13.5.1. Prior to this the PT should perform authentication of a FT as described in subclause 13.3.3.

If obtaining the access rights procedure fails, PT shall leave the access rights parameters unchanged.

In addition to the codings in ETS 300 175-5 [5] subclause 7.7.20 the following applies:

Parameter type coding (octet 3):

| Bits | 7 | 6 | 5 | 4 | 3 | 2 | 1 | Meaning |
|------|---|---|---|---|---|---|---|------------------------------|
| | 0 | 0 | 0 | 0 | 0 | 0 | 1 | access rights modify suggest |

C.3 Identities and addressing

C.3.1 New lock timer user limit

ETS 300 175-6 [6], clause 5:

In addition to the requirements in ETS 300 175-6 [6], clause 5, the following applies:

A location registration at a FP can be permanent or temporary. If the location registration indicates "temporary user limit 2" all registration data shall be cleared from a PP if the PP leaves the locked state with that FP (fails to receive the PARI) for more than T603 seconds. See subclause 6.3.

ETS 300 175-6 [6], subclause 6.3.1:

In addition to the requirements in ETS 300 175-6 [6], subclause 6.3.1, the following applies:

The lock limit may be used to indicate a "temporary user limit 2" assignment. When "temporary user limit 2" is indicated, the assigned TPUI shall be erased if the PP leaves the locked state (fails to receive the PARI) with that FP for more than T603 seconds.

ETS 300 175-6 [6], annex B:

The following replaces the text of ETS 300 175-6 [6], annex B:

- T601 = 5 minutes location registration data and TPUIs maximum storage time for Temporary user limits, if PP is not locked to FP.
- T602 = 5 minutes time between TARI requests, subclause 8.2.6.
- T603 = 40 seconds location registration data and TPUIs maximum storage time for Temporary user limits 2, if PP is not locked to FP.

Annex D (informative): Tones, progress indicator and U-plane connection

See annex B of ETS 300 444 [12].

Annex E (informative): PARI and SARI use for CTM roaming

A CTM user subscribes to the CTM service offered by a CTM service provider. The CTM service provider provides the CTM service using the equipment of one or more network operators. These network operators can be of different nature: public, business and/or residential. The area of mobility provided to the CTM-user depends on the geographical area covered by the totality of equipment of the network operators with whom his service provider has a relationship.

The CTM service provider is identified by one single and globally unique CTM service provider identity, the SP-id.

The network operator equipment is identified by a range of network operator equipment identities, the NO-id's. More than one NO-id can be assigned to the same network operator.

As part of the agreement between CTM service provider and network operators, all involved network operators will administer the SP-id.

Radio base stations of all involved network operators will broadcast the SP-id of the CTM service provider in addition to their own local network equipment's NO-id.

CTM users have a contract with the CTM service provider and as part of the contract they are given the SP-id by means of which they can recognize those parts of the network that take part in the provision of the CTM service for that particular CTM service provider. This SP-id is stored in the user's cordless terminal.

While roaming around, the CTM terminal uses the SP-id to determine whether it has access to local radio base stations (by comparing the broadcast SP-id with its own stored SP-id). If it has access, then the NO-id of the local base station is used as an indication of the location within the network.

NO-ids are structured in such a way that a terminal, while moving within the domain of a SP-id, can determine whether handover or location registration is required (by comparison of the current NO-id with the newly detected NO-id of a neighbouring piece of network operator equipment).

Both the SP-id and the NO-id are mapped to the single DECT concept of "Access Rights Identities" (ARI). However it is important to realise that the application is principally different.

The NO-id is kept in the DECT Fixed Part as the Primary Access Rights Identity (PARI) and is broadcast as part of the Radio Fixed Part Identity (RFPI). Separate PARI values are assigned to each DECT Fixed Part.

The SP-id is kept in the DECT Fixed Part as a Secondary Access Rights Identity (SARI) and is broadcast (but less frequently) by all radio base stations in addition to their RFPI.

In the CTM terminal the SP-id is kept as the user's Portable Access Rights Key (PARK) in association with the user's IPUi.

Figure E.1 gives an illustration.

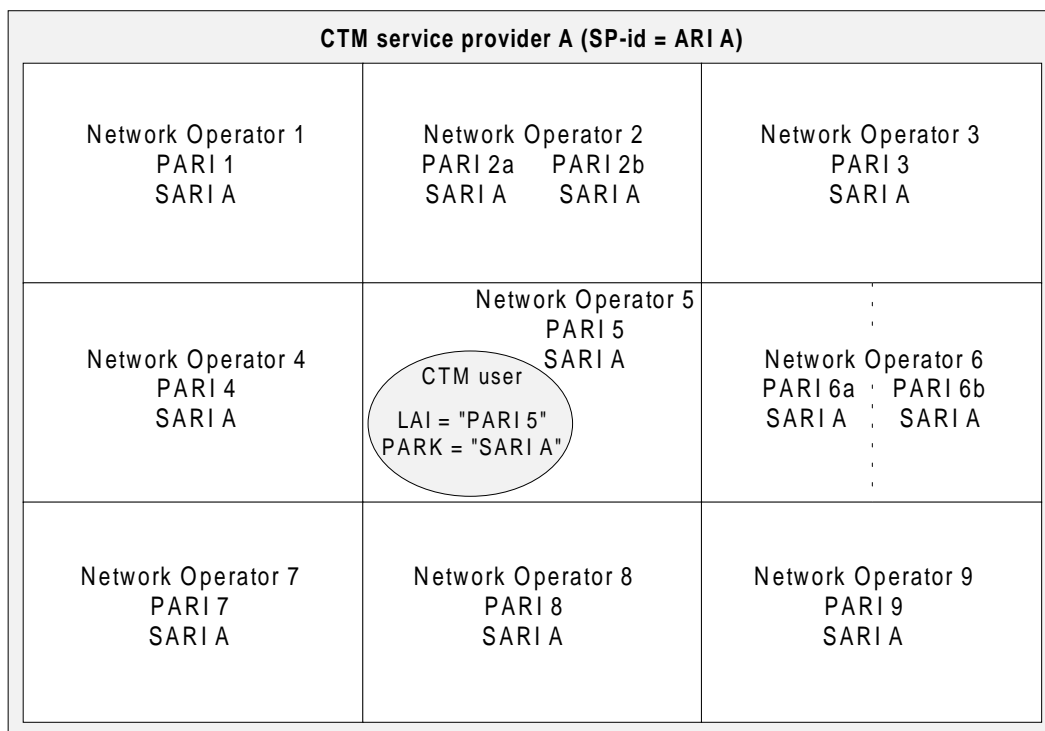


Figure E.1

By comparison of its PARK with the ARI(s) in the SARI-lists of broadcasting radio base stations, the CTM terminal decides whether it has access to that part of the network, and if required starts a location registration. If that is successful, the terminal uses the PARI-value of the current part of the network as a Location Area Identification (LAI). While roaming around, the terminal recognizes other valid network parts by the broadcast SARI. The currently stored LAI, in combination with received PARI-values of local network elements is used by the terminal to decide for handover and/or location registration.

In summary:

- there is a logical and functional difference between the ARI assigned to a network operator and the ARI assigned to a service provider;
- the ARI broadcast as PARI (in RFPI) identifies the network operator and is used to provide the criteria for handover and location registration;
- the ARI broadcast as SARI identifies the service provider and is used by the terminal to determine whether the broadcasting network operator is associated with the CTM service provider, i.e. whether that network operator can give him/her access to subscribed-to CTM service;
- the NO-id's ARI-class (public, business, residential) is independent of the SP-id's ARI-class;
- the SARI glues together all of the network operator equipment into a single domain of a CTM service provider;
- the CTM terminal only needs one subscription. IPUI and PARK are allocated by the service provider and the PARK relates to the ARI of the service provider.

NOTE: If a certain network operator uses its equipment exclusively for CTM and only for one CTM service provider, then the functions of SP-id and NO-id may be combined into the PARI and no SARI would be needed.

Annex F (normative): Class 2 synchronization requirements

A Class 2 synchronization for a CAP FP shall fulfill the requirements as specified in ETS 300 175-2 [2], annex C with the following modifications.

The rear falling edge of a transmitted synchronization pulse shall occur at the output port of the master FP $15 \mu\text{s} \pm T_t \mu\text{s}$ before T0 of **any** RFP on the master FP.

$$T_t = 2 \mu\text{s}$$

T0 of **any** RFP on a slave FP shall occur $T_d \mu\text{s}$ after the rear falling edge of the synchronization pulse at the input of a slave FP.

$$T_d = 15 \mu\text{s} \pm 2 \mu\text{s}.$$

Annex G (normative): Synchronization requirements for fixed parts

Public systems shall provide intersystem synchronization and shall have either GPS synchronization and a Class 1 or Class 2 synchronization output port or a complete Class 1 or Class 2 synchronization port (input and output). This will allow absolute time synchronization via GPS or wired mutual synchronization if an operator requires local synchronization between fixed parts.

Annex H (informative): Coding example for message waiting indication

Although the coding of the component types is defined by application of the basic encoding rules to the abstract syntax, this annex gives an example of the coding for illustrative purposes.

Example-components for MWIIndicate

EXAMPLE 1: Includes basicService, numberOfMessages, controllingUserNr and controllingUserProvidedNr.

| | |
|---|---|
| A1,33, 02,01, 37, 06,06, 04,00,85,69,01,03, 30,26, A1,0B, 80,09,34,39,32,39,34,34,32,30,30, | Invoke component invoke ID (here 37H) objectidentifier mWIIndicate SEQUENCE + Length controllingUserNr (here e.g. unknown PartyNumber 4 92 94 42 00) |
| A2,03, 0A,01,01, A3,03, 02,01,64, A4,0D, A1,0B, 0A,01,01, 12,06,31,32,33,34,35,36; | basic service (here speech) message counter (here 100) controllingUserProvidedNumber (here e.g. PublicPartyNumber) type of PublicPartyNumber (here international) number (123456) |

EXAMPLE 2: Includes basicService, numberOfMessages, time and messageId.

| | |
|--|--|
| A1,2D, 02,01, 37, 06,06, 04,00,85,69,01,03, 30,20, A2,03, 0A,01,00, A3,03, 02,01,03, A5,0A, 18,08,31,39,39,37,30,35,32,37, A6,08, 30,06, 02,01,14, 0A,01,00; | Invoke component invoke ID (here 37H) objectidentifier mWIIndicate SEQUENCE + Length basic service (here allServices) message counter (here 03) GeneralizedTime (e.g. 1997 05 27) messageId messageRef messageStatus (added message) |
|--|--|

History

| Document history | |
|-------------------------|--|
| January 1997 | Public Enquiry PE 9720: 1997-01-17 to 1997-05-16 |
| July 1997 | Vote V 9739: 1997-07-29 to 1997-09-26 |
| | |
| | |
| | |