



**E**UROPEAN  
**T**ELECOMMUNICATION  
**S**TANDARD

**FINAL DRAFT**  
pr **ETS 300 665-1**

June 1996

---

Source: ETSI TC-SPS

Reference: DE/SPS-05075-1

ICS: 33.080

**Key words:** B-ISDN, supplementary service

**Broadband Integrated Services Digital Network (B-ISDN);  
Digital Subscriber Signalling System No. two (DSS2) protocol;  
Connected Line Identification Presentation (COLP)  
supplementary service;  
Part 1: Protocol specification**

**[ITU-T Recommendation Q.2951.5 (1995), modified]**

**ETSI**

European Telecommunications Standards Institute

**ETSI Secretariat**

**Postal address:** F-06921 Sophia Antipolis CEDEX - FRANCE

**Office address:** 650 Route des Lucioles - Sophia Antipolis - Valbonne - FRANCE

**X.400:** c=fr, a=atlas, p=etsi, s=secretariat - **Internet:** secretariat@etsi.fr

Tel.: +33 92 94 42 00 - Fax: +33 93 65 47 16

\*

---

**Copyright Notification:** No part may be reproduced except as authorized by written permission. The copyright and the foregoing restriction extend to reproduction in all media.

© European Telecommunications Standards Institute 1996. All rights reserved.

## Foreword

This final draft European Telecommunication Standard (ETS) has been produced by the Signalling Protocols and Switching (SPS) Technical Committee of the European Telecommunications Standards Institute (ETSI), and is now submitted for the Voting phase of the ETSI standards approval procedure.

This ETS is part 1 of a multi-part standard covering the Digital Subscriber Signalling System No. two (DSS2) protocol specification for the Broadband Integrated Services Digital Network (B-ISDN) Connected Line Identification Presentation (COLP) supplementary service, as described below:

- Part 1:** "Protocol specification";
- Part 2: "Protocol Implementation Conformance Statement (PICS) proforma specification";
- Part 3: "Test Suite Structure and Test Purposes (TSS&TP) specification for the user";
- Part 4: "Abstract Test Suite (ATS) and partial Protocol Implementation eXtra Information for Testing (PIXIT) proforma specification for the user";
- Part 5: "TSS&TP specification for the network";
- Part 6: "ATS and partial PIXIT proforma specification for the network".

NOTE: The final structure of the parts containing the test specifications is currently under study.

In accordance with CCITT Recommendation I.130, the following three level structure is used to describe the supplementary telecommunication services as provided by European public telecommunications operators under the pan-European B-ISDN:

- Stage 1: is an overall service description, from the user's standpoint;
- Stage 2: identifies the functional capabilities and information flows needed to support the service described in stage 1; and
- Stage 3: defines the signalling system protocols and switching functions needed to implement the service described in stage 1.

This ETS details the stage 3 aspects (signalling system protocols and switching functions) need to support the COLP supplementary service. The stage 1 and stage 2 aspects of the equivalent N-ISDN supplementary service are detailed in ETS 300 094 and ETS 300 096 respectively, and these have been assumed to be appropriate to be the foundation for the equivalent B-ISDN supplementary service specifications.

<b>Proposed transposition dates</b>	
Date of latest announcement of this ETS (doa):	3 months after ETSI publication
Date of latest publication of new National Standard or endorsement of this ETS (dop/e):	6 months after doa
Date of withdrawal of any conflicting National Standard (dow):	6 months after doa

## Endorsement notice

The text of ITU-T Recommendation Q.2951.5 (1995) is proposed by ETSI as an ETS with agreed modifications as given below.

NOTE: New or modified text is indicated using sidebars. In addition, underlining and/or strike-out are used to highlight detailed modifications where necessary.

### subclause 5.1

Replace subclause 5.1 by:

#### 5.1 Scope

This first part of ETS 300 665 specifies the stage three of the Connected Line Identification Presentation (COLP) supplementary service for the pan-European Broadband Integrated Services Digital Network (B-ISDN) as provided by European public telecommunications operators at the  $T_B$  reference point or coincident  $S_B$  and  $T_B$  reference point (as defined in ITU-T Recommendation I.413 [1]) by means of the Digital Subscriber Signalling System No. two (DSS2) protocol. Stage three identifies the protocol and procedures and switching functions needed to support a telecommunication service (see ITU-T Recommendation I.130 [2]).

In addition, this ETS specifies the protocol requirements at the  $T_B$  reference point where the service is provided to the user via a private B-ISDN.

This ETS does not specify the additional protocol requirements where the service is provided to the user via a telecommunications network that is not a B-ISDN.

The COLP supplementary service provides the calling party with the possibility to receive identification of the connected party.

The COLP supplementary service is applicable to all telecommunication services.

Further parts of this ETS specify the method of testing required to identify conformance to this ETS.

This ETS is applicable to equipment, supporting the COLP supplementary service, to be attached at either side of a  $T_B$  reference point or coincident  $S_B$  and  $T_B$  reference point when used as an access to the public B-ISDN.

#### subclause 5.2, first paragraph

Replace the first paragraph of subclause 5.2 by:

This ETS incorporates by dated and undated reference, provisions from other publications. These normative references are cited at the appropriate places in the text and the publications are listed hereafter. For dated references, subsequent amendments to or revisions of any of these publications apply to this ETS only when incorporated in it by amendment or revision. For undated references the latest edition of the publication referred to applies.

**subclause 5.2**

Insert the following references at the end of subclause 5.2:

- [8] CCITT Recommendation T.50 (1988): "International Alphabet No. 5".
- [9] ETS 300 443-1: "Broadband Integrated Services Digital Network (B-ISDN); Digital Subscriber Signalling System No. two (DSS2) protocol; B-ISDN user-network interface layer 3 specification for basic call/bearer control; Part 1: Protocol specification [ITU-T Recommendation Q.2931 (1995), modified]".
- [10] ETS 300 669-1: "Broadband Integrated Services Digital Network (B-ISDN); Digital Subscriber Signalling System No. two (DSS2) protocol; Supplementary service interactions; Part 1: Protocol specification".

**Throughout the text of ITU-T Recommendation Q.2951.5**

Replace references as shown in the following table.

Reference in ITU-T Recommendation Q.2951.5	Modified reference
ITU-T Recommendation Q.2931 [3]	ITU-T Recommendation Q.2931 as modified by ETS 300 443-1 [9]

**subclause 5.3**

Insert the following definitions at the end of subclause 5.3:

**address:** The ISDN number of the calling user, and a subaddress if provided by that user.

**international number:** An ISDN number structured as specified in subclause 3.2 (in the paragraphs relating to international number) of ITU-T Recommendation E.164 [4].

**national number; national significant number:** An ISDN number structured as specified in subclause 3.2 (in the paragraphs relating to national number) of ITU-T Recommendation E.164 [4].

**subscriber number:** An ISDN number structured as specified in subclause 3.2 (in the paragraphs relating to subscriber number) of ITU-T Recommendation E.164 [4].

**default number:** An ISDN number registered within the public ISDN following prior agreement between the calling user and the public ISDN.

**special arrangement:** An agreement between a customer and a public network operator whereby customer supplied connected numbers are not screened by the public ISDN.

**subaddress:** See ITU-T Recommendation E.164 [4], subclause 12.2.

**IA5 characters:** See CCITT Recommendation T.50 [8].

**subclause 5.5**

Insert before the first paragraph:

The COLP supplementary service is a supplementary service offered to the calling user. It provides the connected user's ISDN number, possibly with subaddress information to the calling user.

**subclause 5.5, last paragraph**

Delete the last paragraph.

**subclause 5.6.1**

Replace the complete text of subclause 5.6.1 by:

The COLP supplementary service may be provided after prior arrangement with the service provider or be generally available.

The COLP supplementary service shall be withdrawn at the customer's request or for administrative reasons.

A special arrangement may exist whereby connected party provided ISDN numbers are not screened by the public ISDN.

**subclause 5.8.1, second paragraph**

Replace "is network dependent" by "is 26 octets".

**subclause 5.9.2.1.1, fourth paragraph**

Replace the fourth paragraph "If presentation (...) options:" and its two bullet items by:

If the connected number is available, but presentation is not allowed according to the presentation indicator supplied together with the connected number, the network shall include the Connected number information element in the CONNECT message sent to the calling user. The presentation indicator in the connected number information element shall indicate "presentation restricted". The type of number and the numbering plan identification shall be set to "unknown" and the number digits field shall not be included.

**subclause 5.9.2.1.1**

Replace the last paragraph "If presentation (...) called user" and the following note by the two notes:

NOTE 1: If the presentation indicator in the Connected number information element received by the user is set to "number not available due to interworking" or "presentation restricted", the remaining information in the Connected number information element should be ignored by the user.

NOTE 2: Depending on national regulations, some networks may define categories of subscribers that have the ability to override the presentation restriction and have the connected party's ISDN number, and subaddress information (if any) presented (e.g. the police). The ability to override the presentation restriction and the protocol to support such a service is a national matter.

**subclause 5.9.2.3.1.3, eighth paragraph**

Delete the eighth paragraph "The actions at the destination ... Table 5-2/Q.2951".

**subclause 5.11.2, third paragraph**

Replace the third paragraph by:

On calls destined for some non-ISDNs, no complete connected number may be available to the originating ISDN with an indication of connected line identification restriction. In this case the network shall, depending on the indication received, either:

- for "presentation allowed", send the Connected number information element according to the contents of subclause 5.9.2.1.1, second paragraph, and shall include the Connected subaddress information element if the connected subaddress is available; or,
- for "presentation restricted", send the Connected number information element according to the contents of subclause 5.9.2.1.1, fourth paragraph, and shall not include the Connected subaddress information element.

**subclause 5.12**

Replace subclause 5.12 and all of its subclauses by:

The interaction of the COLP supplementary service with other supplementary services shall be as specified in ETS 300 669-1 [10].

figure 5-3/Q.2951

Replace figure 5-3/Q.2951 by:

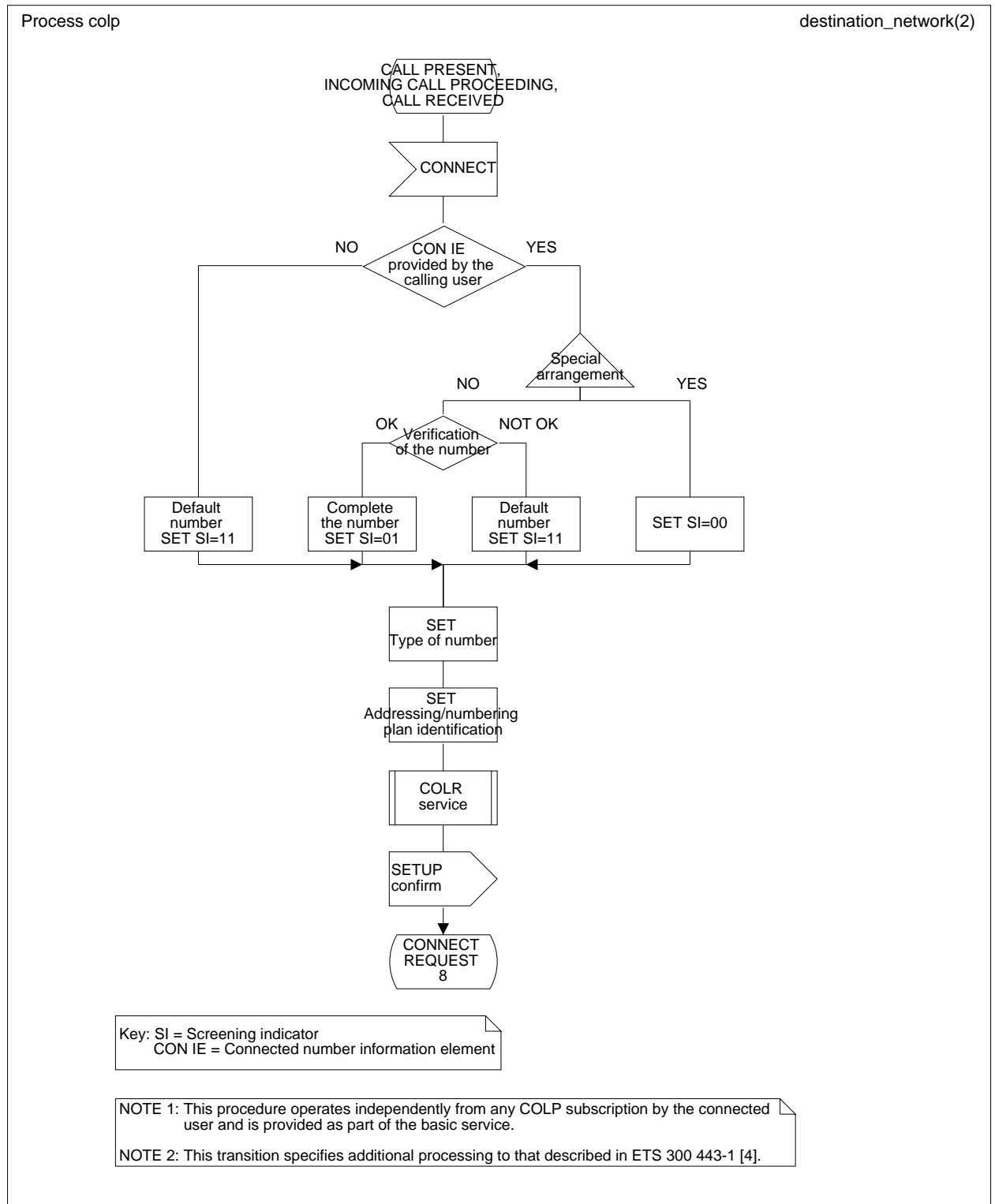


Figure 5-3: Destination network side dynamic description

Figure 5-4/Q.2951

Replace figure 5-4/Q.2951 by:

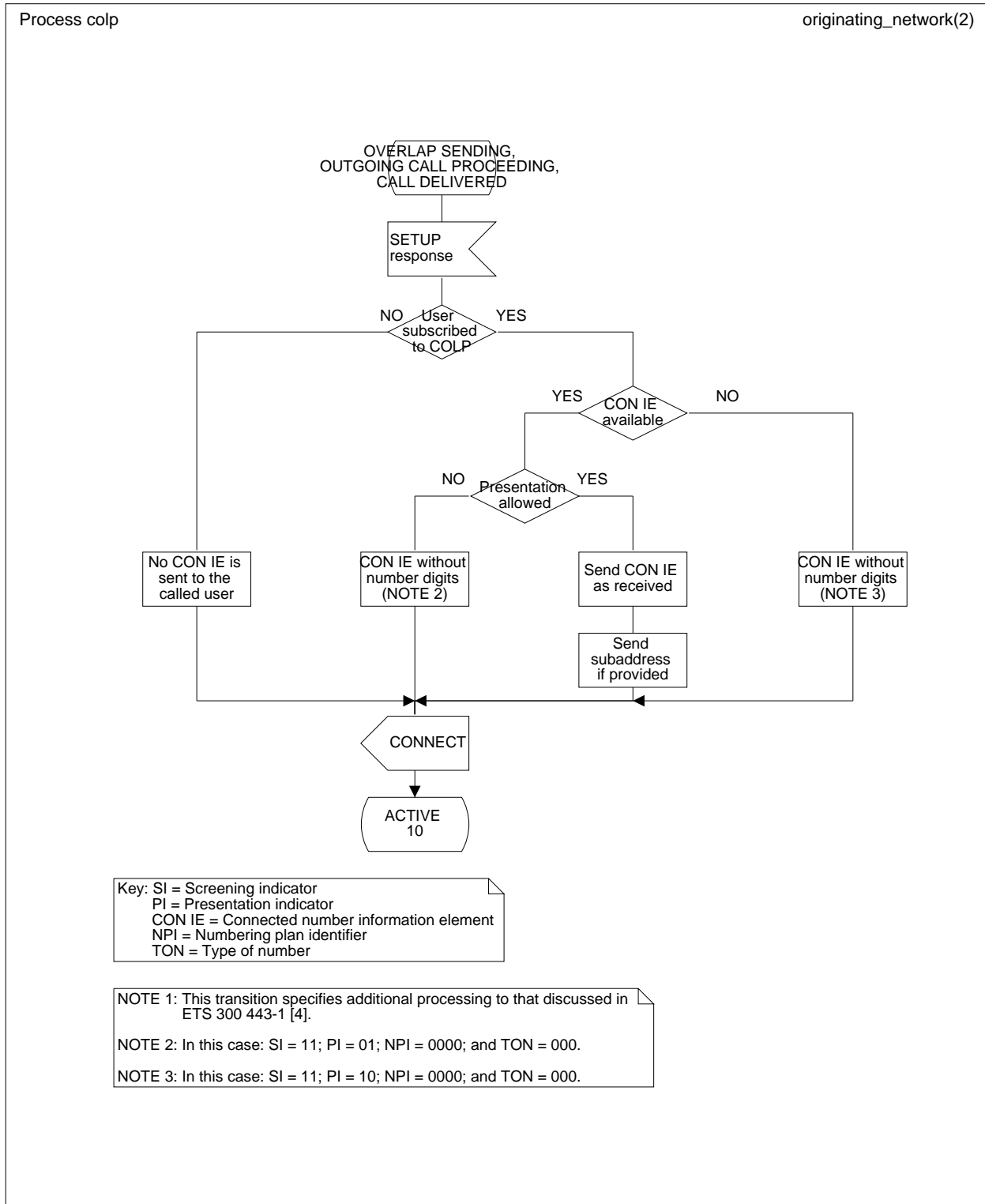


Figure 5-4: Originating network side dynamic description

appendix I

Appendix I has the status of an informative annex.



## History

Document history			
September 1995	Public Enquiry	PE 92:	1995-09-25 to 1996-01-19
June 1996	Vote	V 106:	1996-06-24 to 1996-08-30