



EUROPEAN
TELECOMMUNICATION
STANDARD

ETS 300 606

March 1995

Source: ETSI TC-SMG

Reference: DE/SMG-030911P

ICS: 33.060.30

Key words: European digital cellular telecommunications system, Global System for Mobile communications (GSM)

**European digital cellular telecommunications system (Phase 2);
Signalling interworking for supplementary services
(GSM 09.11)**

ETSI

European Telecommunications Standards Institute

ETSI Secretariat

Postal address: F-06921 Sophia Antipolis CEDEX - FRANCE

Office address: 650 Route des Lucioles - Sophia Antipolis - Valbonne - FRANCE

X.400: c=fr, a=atlas, p=etsi, s=secretariat - **Internet:** secretariat@etsi.fr

Tel.: +33 92 94 42 00 - Fax: +33 93 65 47 16

Copyright Notification: No part may be reproduced except as authorized by written permission. The copyright and the foregoing restriction extend to reproduction in all media.

© European Telecommunications Standards Institute 1995. All rights reserved.

Contents

Foreword.....	5
1 General.....	7
1.1 Scope.....	7
1.2 Normative references.....	8
1.3 Definitions and abbreviations.....	10
2 Introduction.....	11
2.1 MSC/VLR procedures for handling supplementary service signalling received over the A-interface.....	11
2.2 MSC/VLR procedures for handling supplementary service signalling received over the D-interface.....	11
3 SS version negotiation.....	12
3.1 Call related supplementary services interworking.....	12
3.2 Call independent supplementary services interworking.....	12
4 Mapping between tc transaction sublayer messages and layer 3 radio path messages.....	13
4.1 D-interface to A-interface mapping.....	13
4.2 A-interface to D-interface mapping.....	13
4.3 Procedures.....	14
5 Call related supplementary services management.....	15
5.1 SS management in connection establishment phase.....	15
5.1.1 Line Identification services.....	15
5.1.1.1 Calling Line Identification Presentation (CLIP).....	15
5.1.1.2 Calling Line Identification Restriction (CLIR).....	16
5.1.1.3 Connected Line Identification Presentation (COLP).....	16
5.1.1.4 Connected Line Identification Restriction (COLR).....	17
5.1.2 Call Forwarding services.....	17
5.1.2.1 Notification to served mobile subscriber.....	17
5.1.3 Call Waiting service (CW).....	18
5.1.3.1 Offering a waiting call.....	18
5.1.3.2 Notification of waiting call to calling subscriber.....	18
5.1.4 Closed User Group service (CUG).....	19
5.1.4.1 Explicit invocation of a CUG call.....	19
5.1.4.2 Notification of CUG invocation to served MS.....	19
5.1.4.3 Notification of rejection of CUG invocation to served MS.....	20
5.1.4.4 Notification of CUG invocation to terminating MS.....	21
5.1.5 Advice of Charge services.....	22
5.1.5.1 Notification of Charging information to served MS, mobile originated call.....	22
5.1.5.2 Notification of Charging information to served MS, mobile terminated call.....	22
5.1.6 Call Barring services.....	23
5.1.6.1 Barring of outgoing calls.....	23
5.1.6.2 Barring of incoming calls.....	23
5.2 SS Management in stable connection state.....	24
5.2.1 Call Forwarding services.....	24
5.2.1.1 Notification of invocation of CFB to served mobile subscriber.....	24
5.2.2 Call Hold service (HOLD).....	25
5.2.3 Multi Party service (MPTY).....	26
5.2.4 Advice of Charge services.....	27

5.3	SS Management in disconnecting phase.....	27
5.3.1	Call Forwarding services.....	27
6	Call independent supplementary services management.....	28
6.1	MS initiated SS Management	28
6.1.1	Connection establishment phase.....	28
6.1.2	Connection established	28
6.1.3	Connection release	30
6.2	NW initiated SS Management	30
6.2.1	Connection establishment phase.....	30
6.2.2	Connection established	30
6.2.3	Connection release	31
6.2.4	ForwardCheckSSIndication	31
6.3	Mapping of Operation Codes, Error Codes, Parameter Tags and Parameter Contents...	32
6.3.1	Operation codes.....	32
6.3.2	Error codes.....	32
6.3.3	Parameter tags and parameter values	32
	History	33

Foreword

This European Telecommunication Standard (ETS) has been produced by the Special Mobile Group (SMG) Technical Committee (TC) of the European Telecommunications Standards Institute (ETSI).

This ETS provides a detailed specification for interworking between the A-interface protocol and the Mobile Application Part (MAP) for handling of supplementary services within the European digital cellular telecommunications system (Phase 2).

This ETS corresponds to GSM technical specification GSM 09.11 version 4.4.1.

The specification from which this ETS has been derived was originally based on CEPT documentation, hence the presentation of this ETS may not be entirely in accordance with the ETSI/PNE rules.

Reference is made within this ETS to GSM-TSs (NOTE).

Reference is also made within this ETS to GSM xx.xx series. The specifications in the series can be identified, with their full title, within the normative reference Clause of this ETS by the first two digits of their GSM reference number e.g. GSM 09.xx series, refers to GSM 09.01, GSM 09.02, etc.

NOTE: TC-SMG has produced documents which give the technical specifications for the implementation of the European digital cellular telecommunications system. Historically, these documents have been identified as GSM Technical Specifications (GSM-TSs). These TSs may have subsequently become I-ETTs (Phase 1), or ETs (Phase 2), whilst others may become ETSI Technical Reports (ETRs). GSM-TSs are, for editorial reasons, still referred to in current GSM ETs.

Blank page

1 General

1.1 Scope

The scope of this Technical Specification is to provide a detailed specification for interworking between the A interface protocol and the Mobile Application Part for handling of supplementary services. The MAP interfaces of interest are the B-, C-, D- and E-interfaces.

The A-, C-, D- and E-interfaces are physical interfaces while the B-interface is an internal interface defined for modelling purposes. Information relating to the modelling interface is not normative in this specification.

Supplementary service signalling may be passed by the MSC/VLR between the A- and E-interfaces after inter-MSC handover. This procedure is transparent as far as supplementary services are concerned therefore interworking concerning this process is not described in this specification.

Section 2 describes general procedures for interworking between the A- and D- physical interfaces.

Section 3 describes the general procedures for the SS version negotiation.

Section 4 describes the mapping of layer 3 radio path messages with Transaction Capabilities (TC) transaction sublayer messages for interworking between the A- and D- physical interfaces.

Section 5 describes specific interworking procedures for all interfaces relating to call related SS activity.

Section 6 describes specific interworking procedures for all interfaces relating to call independent SS activity. Section 6 also covers the interworking between the MAP User (see TS GSM 09.02) and the SS handling functions of the network entities (see TS GSM 04.10 and TS GSM 04.80).

Reference is made to the following Technical Specifications:

- GSM 02.04 and GSM 02.8x and GSM 02.9x-series,
for definition of supplementary services;
- GSM 03.11, GSM 03.8x and GSM 03.9x-series,
for technical realisation of supplementary services;
- GSM 04.10, GSM 04.80, GSM 04.8x and GSM 04.9x-series,
for radio path signalling procedures for supplementary services;
- GSM 09.02 (MAP).

1.2 Normative references

This ETS incorporates by dated and undated reference, provisions from other publications. These normative references are cited at the appropriate places in the text and the publications are listed hereafter. For dated references, subsequent amendments to or revisions of any of these publications apply to this ETS only when incorporated in it by amendment or revision. For undated references, the latest edition of the publication referred to applies.

- [1] GSM 01.04 (ETR 100): "European digital cellular telecommunications system (Phase 2); Abbreviations and acronyms".
- [2] GSM 02.04 (ETS 300 503): "European digital cellular telecommunications system (Phase 2); General on supplementary services".
- [3] GSM 02.24 (ETS 300 510): "European digital cellular telecommunications system (Phase 2); Description of Charge Advice Information (CAI)".
- [4] GSM 02.81 (ETS 300 514): "European digital cellular telecommunications system (Phase 2); Line identification supplementary services - Stage 1".
- [5] GSM 02.82 (ETS 300 515): "European digital cellular telecommunications system (Phase 2); Call Forwarding (CF) supplementary services - Stage 1".
- [6] GSM 02.83 (ETS 300 516): "European digital cellular telecommunications system (Phase 2); Call Waiting (CW) and Call Hold (HOLD) supplementary services - Stage 1".
- [7] GSM 02.84 (ETS 300 517): "European digital cellular telecommunications system (Phase 2); Multi Party (MPTY) supplementary services - Stage 1".
- [8] GSM 02.85 (ETS 300 518): "European digital cellular telecommunications system (Phase 2); Closed User Group (CUG) supplementary services - Stage 1".
- [9] GSM 02.86 (ETS 300 519): "European digital cellular telecommunications system (Phase 2); Advice of Charge (AoC) supplementary services - Stage 1".
- [10] GSM 02.88 (ETS 300 520): "European digital cellular telecommunications system (Phase 2); Call Barring (CB) supplementary services - Stage 1".
- [11] GSM 02.90 (ETS 300 521): "European digital cellular telecommunications system (Phase 2); Unstructured supplementary services operation - Stage 1".
- [12] GSM 03.11 (ETS 300 529): "European digital cellular telecommunications system (Phase 2); Technical realization of supplementary services".
- [13] GSM 03.81 (ETS 300 542): "European digital cellular telecommunications system (Phase 2); Line identification supplementary services - Stage 2".
- [14] GSM 03.82 (ETS 300 543): "European digital cellular telecommunications system (Phase 2); Call Forwarding (CF) supplementary services - Stage 2".
- [15] GSM 03.83 (ETS 300 544): "European digital cellular telecommunications system (Phase 2); Call Waiting (CW) and Call Hold (HOLD) supplementary services - Stage 2".

- [16] GSM 03.84 (ETS 300 545): "European digital cellular telecommunications system (Phase 2); Multi Party (MPTY) supplementary services - Stage 2".
- [17] GSM 03.85 (ETS 300 546): "European digital cellular telecommunications system (Phase 2); Closed User Group (CUG) supplementary services - Stage 2".
- [18] GSM 03.86 (ETS 300 547): "European digital cellular telecommunications system (Phase 2); Advice of Charge (AoC) supplementary services - Stage 2".
- [19] GSM 03.88 (ETS 300 548): "European digital cellular telecommunications system (Phase 2); Call Barring (CB) supplementary services - Stage 2".
- [20] GSM 03.90 (ETS 300 549): "European digital cellular telecommunications system (Phase 2); Unstructured supplementary services operation - Stage 2".
- [21] GSM 04.08 (ETS 300 557): "European digital cellular telecommunications system (Phase 2); Mobile radio interface layer 3 specification".
- [22] GSM 04.10 (ETS 300 558): "European digital cellular telecommunications system (Phase 2); Mobile radio interface layer 3 Supplementary services specification General aspects".
- [23] GSM 04.80 (ETS 300 564): "European digital cellular telecommunications system (Phase 2); Mobile radio interface layer 3 supplementary services specification Formats and coding".
- [24] GSM 04.81 (ETS 300 565): "European digital cellular telecommunications system (Phase 2); Line identification supplementary services - Stage 3".
- [25] GSM 04.82 (ETS 300 566): "European digital cellular telecommunications system (Phase 2); Call Forwarding (CF) supplementary services - Stage 3".
- [26] GSM 04.83 (ETS 300 567): "European digital cellular telecommunications system (Phase 2); Call Waiting (CW) and Call Hold (HOLD) supplementary services - Stage 3".
- [27] GSM 04.84 (ETS 300 568): "European digital cellular telecommunications system (Phase 2); Multi Party (MPTY) supplementary services - Stage 3".
- [28] GSM 04.85 (ETS 300 569): "European digital cellular telecommunications system (Phase 2); Closed User Group (CUG) supplementary services - Stage 3".
- [29] GSM 04.86 (ETS 300 570): "European digital cellular telecommunications system (Phase 2); Advice of Charge (AoC) supplementary services - Stage 3".
- [30] GSM 04.88 (ETS 300 571): "European digital cellular telecommunications system (Phase 2); Call Barring (CB) supplementary services - Stage 3".
- [31] GSM 04.90 (ETS 300 572): "European digital cellular telecommunications system (Phase 2); Unstructured supplementary services operation - Stage 3".

- [32] GSM 09.02 (ETS 300 599): "European digital cellular telecommunications system (Phase 2); Mobile Application Part (MAP) specification".
- [33] GSM 09.10 (ETS 300 605): "European digital cellular telecommunications system (Phase 2); Information element mapping between Mobile Station - Base Station System and BSS - Mobile-services Switching Centre (MS - BSS - MSC) Signalling procedures and the Mobile Application Part (MAP)".

1.3 Definitions and abbreviations

Abbreviations used in this specification are listed in GSM 01.04.

2 Introduction

This section describes general procedure at the MSC/VLR for SS interworking between the A- and D-interfaces.

2.1 MSC/VLR procedures for handling supplementary service signalling received over the A-interface

Upon receipt of supplementary service signalling on the A-interface, the MSC/VLR shall:

- perform any internal SS checks or procedures appropriate to the signal (see sections 4 and 5);
- if necessary request access to the HLR over the D-interface using the procedures defined in this specification and MAP, TS GSM 09.02;
- use the version indicator received from the MS to set up the right AC context name towards the HLR (see section 3). The version indicator is described in TS GSM 04.10 and 04.80. AC names are defined in TS GSM 09.02;
- perform mapping between layer 3 messages on the radio path and TC transaction sublayer messages as required (see section 3).

2.2 MSC/VLR procedures for handling supplementary service signalling received over the D-interface

Upon receipt of supplementary service signalling on the D-interface, the MSC/VLR shall:

- perform any internal SS checks or procedures appropriate to the signal (see sections 4 and 5);
- handle any information elements according to the screening indicator procedure as described in TS GSM 04.10;
- perform mapping between TC transaction sublayer messages and layer 3 messages on the radio path as required (see section 3).

3 SS version negotiation

This section describes the general procedures for the call related and call independent supplementary services version negotiation.

3.1 Call related supplementary services interworking

No interworking identified.

3.2 Call independent supplementary services interworking

On receipt of the REGISTER message from the MS, the MSC/VLR will include the appropriate AC name in the dialogue control portion of the BEGIN message based on the following rules:

- if no version indicator is present, no AC name is included in the BEGIN message towards the HLR (no AC name indicates "version1");
- if the version indicator is less or equal to the highest AC name the MSC/VLR and HLR both support, the "dialogue" will be handled according to the AC name corresponding to the version indicator and to the SS operation received;
- if the version indicator is greater than the highest commonly supported AC name within the network (MSC/VLR, HLR), the "dialogue" will be handled according to this highest AC name if the request from the MS can also be fulfilled with this version of the "dialogue".

The selection of the highest commonly supported AC name by the network is described in TS GSM 09.02.

It should be noted that unknown parameters of the extension field within the Facility Information Element shall be forwarded to a phase 2 HLR according to the Extensibility rules as defined in TS GSM 09.02. They may be discarded when sent to a phase 1 HLR.

According to this version of the standards, the highest AC name is "version2".

The description method employed in the sections 4 to 6 is tabled showing the mapping of parameter values. The exact values of the parameters and parameter tags can be found in the referenced specifications.

4 Mapping between tc transaction sublayer messages and layer 3 radio path messages

This section describes the mapping of TC transaction sublayer messages to layer 3 radio path messages over the external interfaces. The precise coding of these messages is given in other technical specifications.

4.1 D-interface to A-interface mapping

Table 4.1 shows the mapping of TC transaction sublayer messages to layer 3 messages on the radio path.

TC transaction sublayer message	Layer 3 radio path message
BEGIN	REGISTER (NOTE 1)
CONTINUE (NOTE 2)	FACILITY/REGISTER (NOTE 3)
END (NOTE 2)	RELEASE COMPLETE/REGISTER (NOTE 3)
ABORT (NOTE 2)	RELEASE COMPLETE

NOTE 1: AC name is not mapped to a version indicator.

NOTE 2: The user information field if present is discarded.

NOTE 3: A CONTINUE or END is mapped to REGISTER if a new transaction has to be established.

Table 4.1: Mapping of TC transaction sublayer messages to layer 3 radio path messages

4.2 A-interface to D-interface mapping

Table 4.2 shows the mapping of layer 3 radio path messages to TC transaction sublayer messages.

Layer 3 radio path message	TC transaction sublayer message
REGISTER	BEGIN (NOTE)
FACILITY	CONTINUE
RELEASE COMPLETE	END

NOTE: The right AC name shall be included, see section 3.

Table 4.2: Mapping of layer 3 radio path messages to TC transaction sublayer messages

4.3 Procedures

The mapping from TC Transaction Sublayer messages to Layer 3 radio path messages must include a replacement of the tag and length of the Component Portion in the Transaction Sublayer message with the Information element identifier and length of the Facility Information Element for the Layer 3 message. Similarly for the reverse mapping. However, if a version indicator is received an AC name will be provided in the BEGIN message, see section 3.

All transaction sublayer messages, except the ABORT message, will normally contain one or more components. If components are included, the conversion algorithm described below applies. If a message does not contain a component, then the corresponding message is also sent without a component: messages shall not be withheld by the interworking function.

For call independent SS operations each message shall only contain a single component. If a message contains more than one component then a RELEASE COMPLETE message with the cause "Facility rejected" (see TS GSM 04.08) and without any component shall be sent on the radio path (see TS GSM 04.10).

TC Transaction sublayer messages can also contain a dialogue portion. If a user-information is received within this dialogue portion, it will not be conveyed in a Layer 3 radio path message.

If an ABORT message is received in TC, a RELEASE COMPLETE message is to be sent on the radio path. The RELEASE COMPLETE message shall not contain any component. If a cause is to be provided to the MS, one of the cause codes of TS GSM 04.08 shall be used.

If an ABORT message with a dialogue portion indicating "version fallback" (e.g. the cause "AC-not-supported") is received in TC then, if the MSC does not re-attempt the "dialogue" (e.g by using a different AC name), it shall send a RELEASE COMPLETE to the MS with the cause "Facility rejected" (see TS GSM 04.08) and without any component.

If an END message with a dialogue portion indicating "dialogue refused" is received in TC then the MSC shall send a RELEASE COMPLETE to the MS with the cause "Facility rejected" (see TS GSM 04.08) and without any component.

If a layer 3 radio path message or a component in the layer 3 radio path message is rejected by the MSC, the MSC shall:

- return a RELEASE COMPLETE message to the MS. If the reject condition is not associated with a component, one of the cause codes of TS GSM 04.08 shall be inserted, as described below. If it is a component (except a REJECT component), a REJECT component with the appropriate problem code shall be inserted in the RELEASE COMPLETE message, as described below. If the reject condition concerns a REJECT component the RELEASE COMPLETE message may be empty;
- terminate the transaction with the VLR by use of an ABORT message.

If a dialogue cannot be established with the HLR because no common AC name is available then the MSC shall send a RELEASE COMPLETE to the MS with the cause "Facility rejected".

5 Call related supplementary services management

5.1 SS management in connection establishment phase

When a CM connection is being set up between an MS and an MSC, setting up of a connection between the MSC and the VLR to request access proceeds as for normal call set-up (see TS GSM 09.02). Moreover, the MSC will also assess the capabilities of the MS according to the screening indicator (see TS GSM 04.10 and TS GSM 04.80). As the call set-up proceeds, the following supplementary services may apply:

5.1.1 Line Identification services

These supplementary services (described in TS GSM 04.81) require interworking in the MSC between both TS GSM 04.08, MAP (TS GSM 09.02) and the fixed network protocol, see also TS GSM 09.10.

5.1.1.1 Calling Line Identification Presentation (CLIP)

The signalling at invocation of the CLIP supplementary service is shown in figure 5.1.

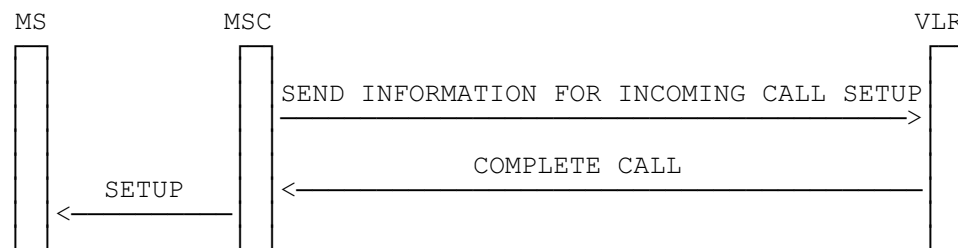


Figure 5.1: Signalling for CLIP supplementary service

When a call terminates at a mobile subscriber, the MSC obtains information on what supplementary services are active by analysing the SS-Data parameter in the MAP_COMPLETE_CALL service primitive on the B-interface. If this parameter indicates that the CLIP service is provided (and CLIR is not indicated in the incoming call set-up message from the PSTN), then the number of the calling subscriber (if received in the incoming call set-up) shall be mapped onto the Calling Party BCD number parameter in the SETUP message sent to the mobile. Exact values of the parameter and parameter tags are indicated in TS GSM 04.80 and 04.81.

5.1.1.2 Calling Line Identification Restriction (CLIR)

The signalling at invocation of the CLIR supplementary service is shown in figure 5.2.

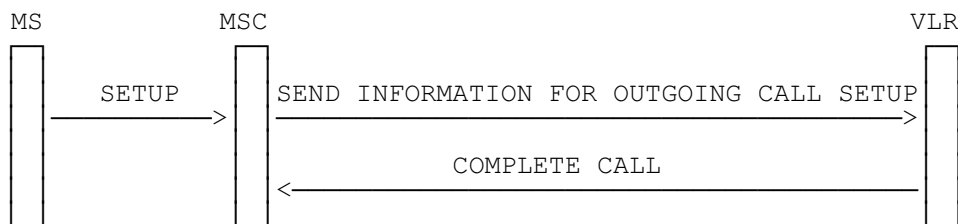


Figure 5.2: Signalling for CLIR supplementary service

When a call originates at a mobile subscriber, the MSC obtains information on what supplementary services are active by analysing the SS-Data parameter in the MAP_COMPLETE_CALL service primitive on the B-interface. If this parameter indicates that the CLIR service is provided and if the CLIR service shall be invoked (according to the presentation mode and possible subscriber request), then this information is indicated in the initial address message sent using the fixed network protocol (if possible).

If this parameter indicates that the CLIR service is not provided and the calling subscriber has attempted to invoke CLIR, then the call set-up shall be rejected as defined in TS GSM 04.81.

5.1.1.3 Connected Line Identification Presentation (COLP)

The signalling at invocation of the COLP supplementary service is shown in figure 5.3.

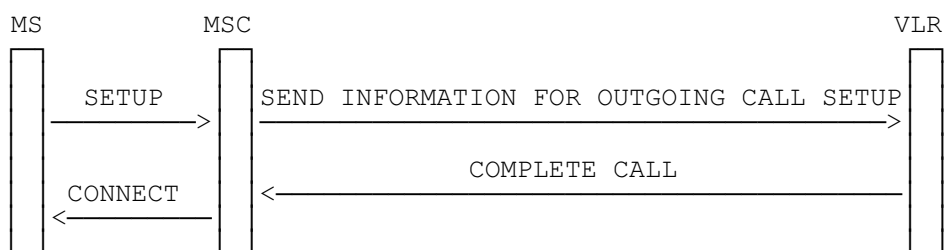


Figure 5.3: Signalling for COLP supplementary service

When a call originates at a mobile subscriber, the MSC obtains information on what supplementary services are active by analysing the SS-Data parameter in the MAP_COMPLETE_CALL service primitive on the B-interface. If this parameter indicates that the COLP service is provided, then if the connected line identity is made available by the terminating network (i.e. no interworking or presentation restrictions apply) then the connected number is passed to the calling mobile subscriber in the ConnectedNumber parameter in the CONNECT message.

5.1.1.4 Connected Line Identification Restriction (COLR)

The signalling at invocation of the COLR supplementary service is shown in figure 5.4.

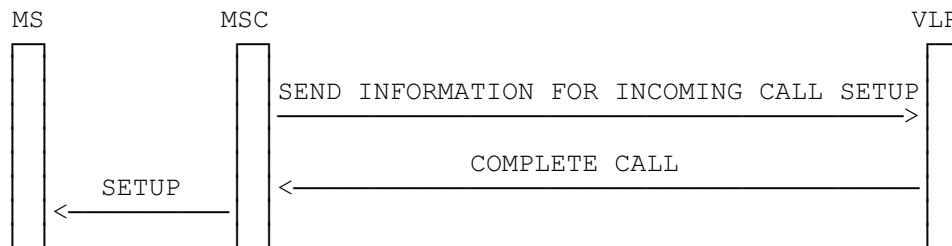


Figure 5.4: Signalling for COLR supplementary service

When a call terminates at a mobile subscriber, the MSC obtains information on what supplementary services are active by analysing the SS-Data parameter in the MAP_COMPLETE_CALL service primitive on the B-interface. If this parameter indicates that the COLR service is provided, then this information is sent to the originating network using the fixed network protocol (if possible).

5.1.2 Call Forwarding services

5.1.2.1 Notification to served mobile subscriber

As described in TS GSM 02.82, when a subscriber has any (set of) Call Forwarding service(s) active, a notification of this fact is sent to the MS at mobile originated call set-up from the served mobile subscriber. The signalling for this notification is shown in figure 5.5.

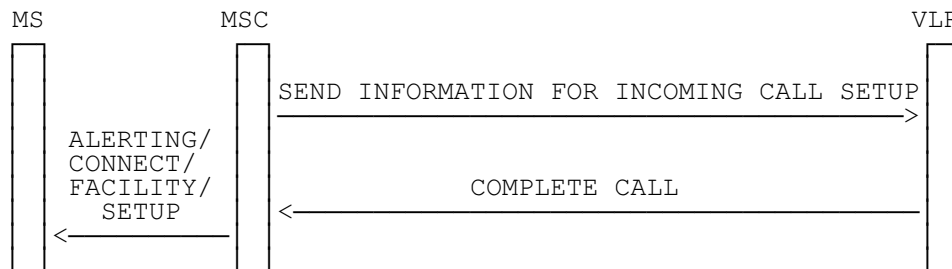


Figure 5.5: Signalling for notification of invocation of Call Forwarding supplementary service

The MSC obtains information on what supplementary services are active by analysing the SS-Data parameter in the MAP_COMPLETE_CALL service primitive on the B-interface. If this parameter indicates that a call forwarding service is active, then any of the ALERTING, CONNECT or FACILITY messages may be used to convey the required NotifySS operation in a Facility information element. Exact values of the parameter and parameter tags are indicated in TS GSM 04.80 and 04.82.

5.1.3 Call Waiting service (CW)

5.1.3.1 Offering a waiting call

The signalling for this situation is shown in figure 5.6.

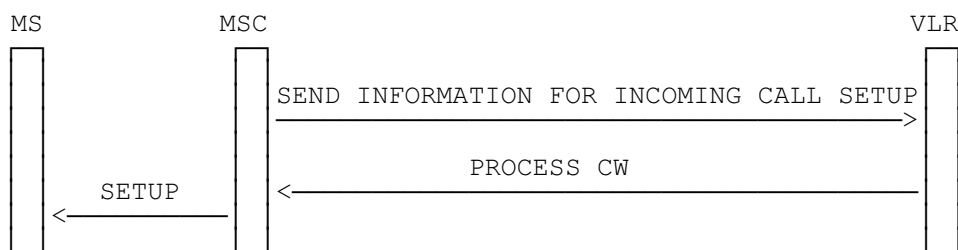


Figure 5.6: Signalling for setting up a waiting call

A waiting call is offered to a busy MS using a normal SETUP message including a "Signal" information element with value #7 (call waiting tone on), as described in TS GSM 04.83. This is the required MSC behaviour if it has received a MAP_PROCESS_CALL_WAITING service primitive as a response to a MAP_SEND_INFO_FOR_INCOMING_CALL service primitive on the B-interface. Exact values of the parameter and parameter tag are indicated in TS GSM 04.08.

5.1.3.2 Notification of waiting call to calling subscriber

The signalling for this notification is shown in figure 5.7.



Figure 5.7: Signalling for notification of waiting call to calling subscriber

If there are no network interworking limitations between the originating and destination MSCs, then the calling MS receives notification of his waiting call as follows: A Facility Information element in the ALERTING message includes a NotifySS operation with the following parameters:

- SS-Code parameter indicates "callWaiting";
- CallsWaitingIndicator parameter indicates "callsWaiting".

Exact values of the parameter and parameter tags are indicated in TS GSM 04.80 and 04.83.

5.1.4 Closed User Group service (CUG)

5.1.4.1 Explicit invocation of a CUG call

The signalling for this situation is shown in figure 5.8.

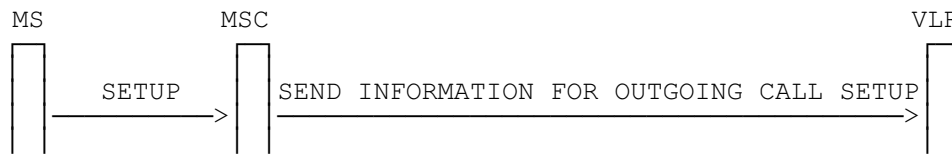


Figure 5.8: Signalling at explicit invocation of a CUG call

When a subscriber to the CUG supplementary service sets up a call, an explicit invocation involves transport of a ForwardCUG-Info operation in a Facility information element in the SETUP message. Parameter mapping between the air-interface SETUP message and the B-interface MAP_SEND_INFO_FOR_OUTGOING_CALL service primitive shall take place in the MSC. Exact values of the parameter and parameter tags are indicated in TS GSM 04.80 and 04.85. The parameter tags and values are mapped as follows:

TS GSM 04.80 parameter name	TS GSM 09.02 parameter name
cug-Index	cug-Index
suppressPrefCUG	suppressPrefCUG
suppressOA	suppressOutgoingAccess

Table 5.1: Mapping of parameter names and values for explicit invocation of a CUG call

5.1.4.2 Notification of CUG invocation to served MS

The signalling for this situation is shown in figure 5.9.

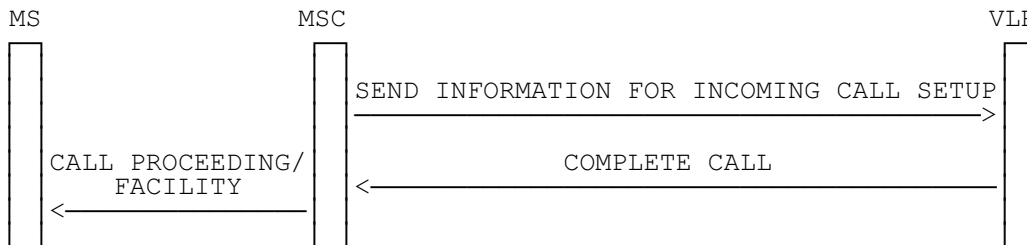


Figure 5.9: Signalling flow for notification of CUG invocation to served MS

The network may indicate to the MS that a CUG has been invoked for the outgoing call by sending a NotifySS operation in the Facility information element in the FACILITY or CALL PROCEEDING message towards MSa. The parameter to be included in this operation (cug-Index) is obtained from the MAP_COMPLETE_CALL service primitive. Exact values of the parameter and parameter tags are indicated in TS GSM 04.80 and 04.85.

5.1.4.3 Notification of rejection of CUG invocation to served MS

The signalling for this situation is shown in figure 5.10.

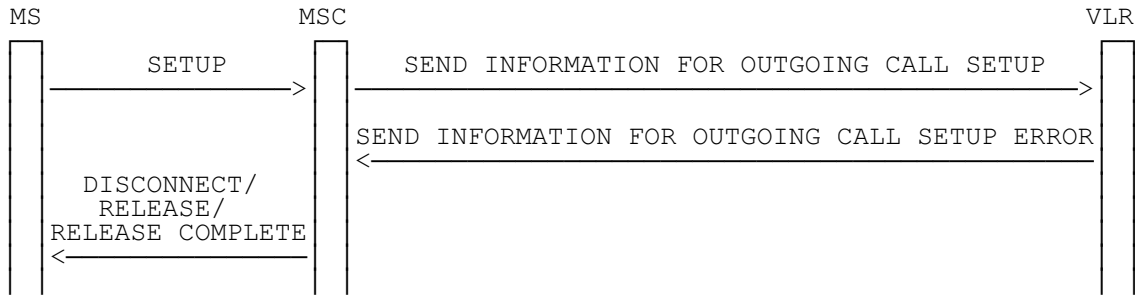


Figure 5.10: Signalling flow for notification of rejection of CUG invocation to served MS

When an attempted CUG call is rejected for CUG related reasons, mapping of parameter values take places in order to inform the MSa of the failure in the DISCONNECT, RELEASE or RELEASE COMPLETE message. If the call is rejected by the serving VLR, a mapping of errors received on the B-interface (as response to MAP_SEND_INFO_FOR_OUTGOING_CALL) to diagnostics (in the diagnostics field of the Facility Rejected cause value) must be performed. The mapping from error code to diagnostic is as follows (detailed values of tags, cause values and diagnostics are found in TS GSM 09.02, 04.08, and 04.80 respectively):

TS GSM 09.02 error cause	Facility rejected #29 diagnostic field
outgoingCallsBarredWithinCUG	Outgoing calls barred within the CUG
noCUG-Selected	No CUG selected
unknownCUG-Index	Unknown CUG index
indexIncompatibleWith RequestedBasicService	Index incompatible with requested basic service

Table 5.2: Mapping of TS GSM 09.02 error causes to diagnostics at notification of rejection of CUG invocation to served MS

If there are no network interworking restrictions (i.e. originating MSC = gateway MSC = terminating MSC), interworking between MAP and the air-interface takes place also for rejection of CUG calls by terminating end. The signalling for this situation is shown in figure 5.11.

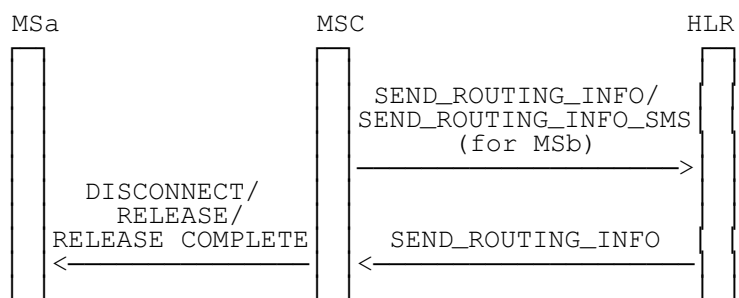


Figure 5.11: Signalling flow for notification of rejection of CUG invocation from terminating end

The mapping from error code to diagnostic is as follows (detailed values of tags, cause values and diagnostics are found in TS GSM 09.02, 04.08, and 04.80 respectively):

TS GSM 09.02 error cause	Cause information element (cause value)
calledPartySSInteractionViolation	Facility Rejected #29, Diagnostic = CUG call failure, unspecified
incomingCallsBarredWithinCUG	Incoming calls barred within the CUG #55
subscriberNotMemberOfCUG	User not a member of CUG #87
requestedBasicServiceViolatesCUG-Constraints	Facility Rejected #29

Table 5.3: Mapping of TS GSM 09.02 error causes to cause values at notification of rejection by terminating end

5.1.4.4 Notification of CUG invocation to terminating MS

The signalling for this situation is shown in figure 5.12.

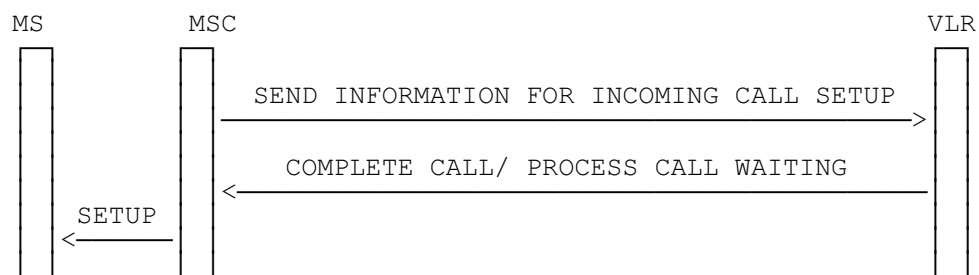


Figure 5.12: Signalling flow for notification of CUG invocation to terminating end

When a CUG call arrives at the terminating end, the CUG index associated with the invoked CUG may be passed to the mobile station. The `cug-Index` parameter is obtained from the fixed network connection establishment request message, or if no fixed network protocol is involved (i.e. originating = terminating MSC), it is obtained from the `MAP_COMPLETE_CALL` or `MAP_PROCESS_CALL_WAITING` service primitive. Its value is mapped onto the `cug-Index` parameter in the `NotifySS` operation in the Facility Information element of the `SETUP` message on the air-interface. Exact values of the parameter and parameter tags are indicated in TS GSM 04.80 and 04.85.

5.1.5 Advice of Charge services

5.1.5.1 Notification of Charging information to served MS, mobile originated call

The signalling for this situation is shown in figure 5.13.

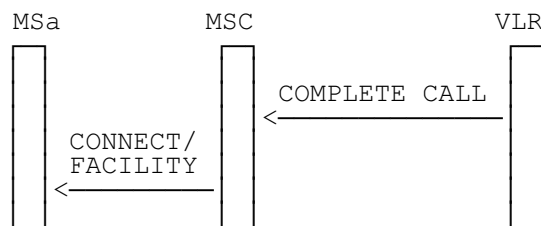


Figure 5.13: Signalling flow for notification of Mobile originated Charging Information to served MS

The network may indicate charging information to the MS at mobile originated call set-up. The MSC knows charging information is applicable due to the inclusion of an SS-Code indicating Advice Of Charge Charging or Advice Of Charge Information in the MAP_COMPLETE_CALL service indication from the VLR. This parameter's value is mapped onto the SS-Code parameter in the ForwardChargeAdvice operation which is to be sent to the MS together with the relevant charging parameters. The ForwardChargeAdvice operation shall be sent in the facility information element of either the CONNECT or the FACILITY message. Exact values of the parameter and parameter tags are indicated in TS GSM 04.80 and 04.85.

5.1.5.2 Notification of Charging information to served MS, mobile terminated call

The signalling for this situation is shown in figure 5.14.

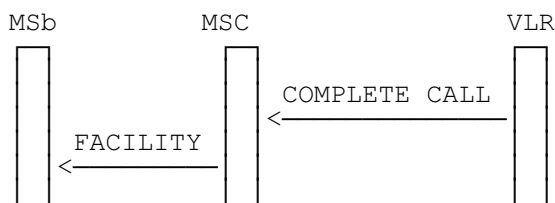


Figure 5.14: Signalling flow for notification of Mobile terminated Charging Information to served MS

The network may indicate charging information to the MS at mobile terminated call set-up. The MSC knows charging information is applicable due to the inclusion of an SS-Code indicating Advice Of Charge Charging or Advice of Charge Information in the SS-Data parameter included in the MAP_COMPLETE_CALL service indication from the VLR. This parameter's value is mapped onto the SS-Code parameter in the ForwardChargeAdvice operation which is to be sent to the MS together with the relevant charging parameters. The ForwardChargeAdvice operation shall be sent in the facility information element of the FACILITY message. Exact values of the parameter and parameter tags are indicated in TS GSM 04.80 and 04.85.

5.1.6 Call Barring services

These supplementary services (described in TS GSM 04.88) require the following interworking in the MSC:

5.1.6.1 Barring of outgoing calls

The signalling for this situation is shown in figure 5.15.

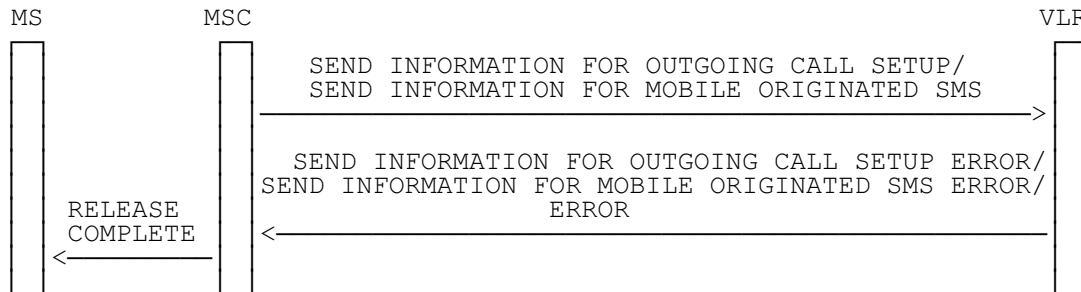


Figure 5.15: Signalling flow for barring of an outgoing call

If the error code "CallBarred" is received as a response to the MAP_SEND_INFO_FOR_OUTGOING_CALL or MAP_SEND_INFO_FOR_MO_SMS service primitives on the B-interface, then a RELEASE COMPLETE message with a NotifySS operation shall be sent to the originating MS, as described in TS GSM 04.88. The mapping of 09.02 error causes to 04.08 cause values is shown in table 5.4. Exact values of the parameter and parameter tags are indicated in TS GSM 04.80, 04.88 and 04.08.

TS GSM 09.02 error cause	Cause value
barringServiceActive	#31: Normal Unspecified
operatorBarring	#21: Call Rejected
(None)	#21: Call Rejected

Table 5.4: Mapping of 09.02 errors causes to cause values at barring of outgoing call

5.1.6.2 Barring of incoming calls

The signalling for this situation is shown in figure 5.16.

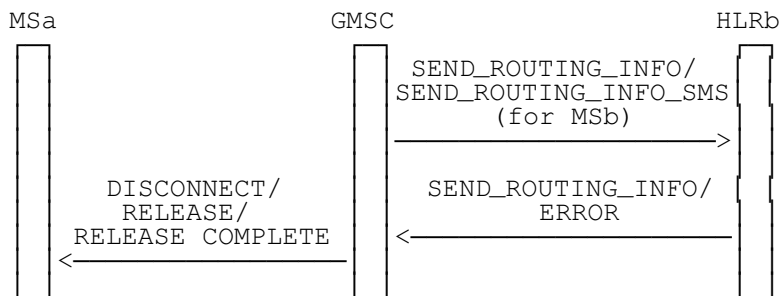


Figure 5.16: Signalling flow for barring of an incoming call

If the error code "CallBarred" is received as a response to the MAP_SEND_ROUTING_INFO or MAP_SEND_ROUTING_INFO_FOR_SM service primitives on the D-interface, then if no network interworking limitations apply, a NotifySS operation shall be sent to the originating MS in the first clearing message, as described in TS GSM 04.88. The mapping of TS GSM 09.02 error causes to TS GSM 04.08 cause values is shown in table 5.5. Exact values of the parameter and parameter tags are indicated in TS GSM 04.80, 04.88 and 04.08.

TS GSM 09.02 error cause	Cause value
barringServiceActive	#21: Call Rejected
operatorBarring	#21: Call Rejected
(None)	#21: Call Rejected

Table 5.5: Mapping of TS GSM 09.02 error causes to cause values at barring of incoming call

5.2 SS Management in stable connection state

When a stable CM connection is set up between a mobile station and the network, the following supplementary services may apply:

5.2.1 Call Forwarding services

5.2.1.1 Notification of invocation of CFB to served mobile subscriber

As described in TS GSM 02.82, when the Call Forwarding on MS Busy service is invoked by the network, a notification of this fact may be sent to the MS. The signalling for the situation when the user is NDUB is shown in figure 5.17. Note that if the subscriber is not NDUB, this notification does not apply.

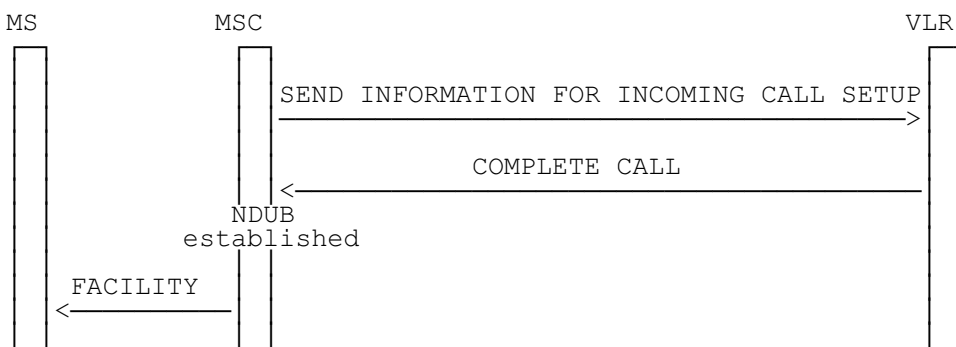


Figure 5.17: Signalling for notification of invocation of CFB supplementary service

The MSC obtains information on what supplementary services are active by analysing the SS-Data parameter in the MAP_COMPLETE_CALL service primitive on the B-interface. If this parameter indicates that CFB is active, then the FACILITY message may be used to convey the required NotifySS operation in a Facility information element. Exact values of the parameter and parameter tags are indicated in TS GSM 04.80 and 04.82.

5.2.2 Call Hold service (HOLD)

As described in TS GSM 04.83, an MS can at any time during the active phase of a call signal invocation of the Call Hold supplementary service towards the network. This is done by use of the HOLD message (defined in TS GSM 04.80). When the MSC receives such a message, it requests access to the VLR and sends the MAP_INVOKE_SS service primitive to the VLR (as described in TS GSM 09.02). The interworking function triggers this behaviour by sending an internal MAP_INVOKE_SS signal to the MAP Service User of the MSC, indicating the following parameter values:

- SS-Code = Call Hold;
- BS-Code = Basic service of the on-going call.

The signalling for this situation is shown in figure 5.18. Exact values of the parameter and parameter tags are indicated in TS GSM 04.80, 04.83 and 09.02.

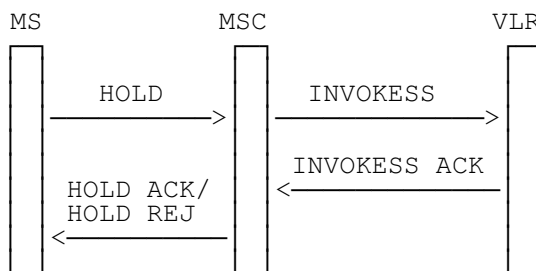


Figure 5.18: Signalling flow at invocation of Call Hold supplementary service

If the A_INVOKE_SS signal from the MAP Service User in the MSC is empty, the HOLD ACKNOWLEDGE message is returned to the MS. If it refers to an error, the mapping of error causes takes place according to table 5.6. Exact values of the parameter tags are indicated in TS GSM 04.80 and 09.02.

TS GSM 09.02 operation error	TS GSM 04.80 HOLD REJECT cause
SystemFailure	#63: Service/Option not available
DataMissing	#100: Invalid Information Element contents
UnexpectedDataValue	#100: Invalid Info. element contents
CallBarred	#29: Facility Rejected
IllegalSS-Operation	#50: Requested Facility not subscribed
SS-ErrorStatus	#50: Requested facility not subscribed
SS-NotAvailable	#69: Requested facility not implemented

Table 5.6: Mapping of TS GSM 09.02 operation errors to TS GSM 04.80 HOLD REJECT causes

Note that Call Retrieval requires no communication on the B-interface, and thus no interworking requirements have been identified.

5.2.3 Multi Party service (MPTY)

As described in TS GSM 04.84, an MS can at any time during the active phase of a call signal invocation of the Multi Party supplementary service towards the network. This is done by including a BuildMPTY operation (defined in TS GSM 04.80) in a FACILITY message. When the MSC receives such a request, it requests access to the VLR and sends the MAP_INVOKE_SS service primitive to the VLR (as described in TS GSM 09.02). The interworking function triggers this behaviour by sending an internal MAP_INVOKE_SS signal to the MAP Service User of the MSC, indicating the following parameter values:

- SS-Code = MPTY;
- BS-Code = Basic Service Code of the on-going calls.

Note that the MSC does not allow the MPTY to be invoked if the two calls are not telephony calls.

The signalling for this situation is shown in figure 5.19.

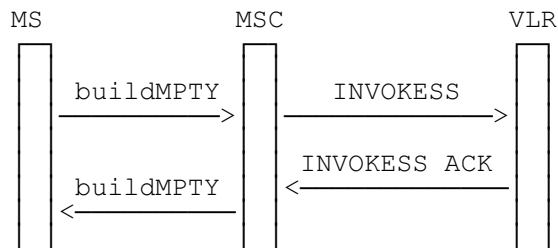


Figure 5.19: Signalling flow at invocation of Multi Party supplementary service

If the A_INVOKE_SS signal from the MAP Service User in the MSC is empty, the BuildMPTY return result is returned to the MS in a FACILITY message. If it refers to an error, the mapping of errors takes place according to table 5.7.

TS GSM 09.02 operation error	TS GSM 04.80 BuildMPTY error
SystemFailure	SystemFailure
DataMissing	SystemFailure
UnexpectedDataValue	SystemFailure
CallBarred	IllegalSS-Operation
IllegalSS-Operation	IllegalSS-Operation
SS-ErrorStatus	SS-ErrorStatus
SS-NotAvailable	SS-NotAvailable

Table 5.7: Mapping of TS GSM 09.02 operation errors to TS GSM 04.80 BuildMPTY errors

Note that Holding, Retrieving and Splitting a multi party requires no communication on the B-interface, and thus no interworking requirements have been identified.

5.2.4 Advice of Charge services

Notification of Charging information to served MS during the call

The network may indicate revised charging parameters (as required according to TS GSM 02.24, 02.86, 03.86 and 04.86) to the MS during a call. The parameters are forwarded to MSa using the ForwardChargeAdvice operation in the facility information element of the FACILITY message. Exact values of the parameter and parameter tags are indicated in TS GSM 04.80 and 04.85.

5.3 SS Management in disconnecting phase

When a CM connection is being released, the following supplementary services may apply:

5.3.1 Call Forwarding services

Notification of invocation of CFNRy to served mobile subscriber

As described in TS GSM 02.82, when the Call Forwarding on No Reply service is invoked by the network, a notification of this fact may be sent to the MS as the call attempt is disconnected. The signalling for this situation is shown in figure 5.20.

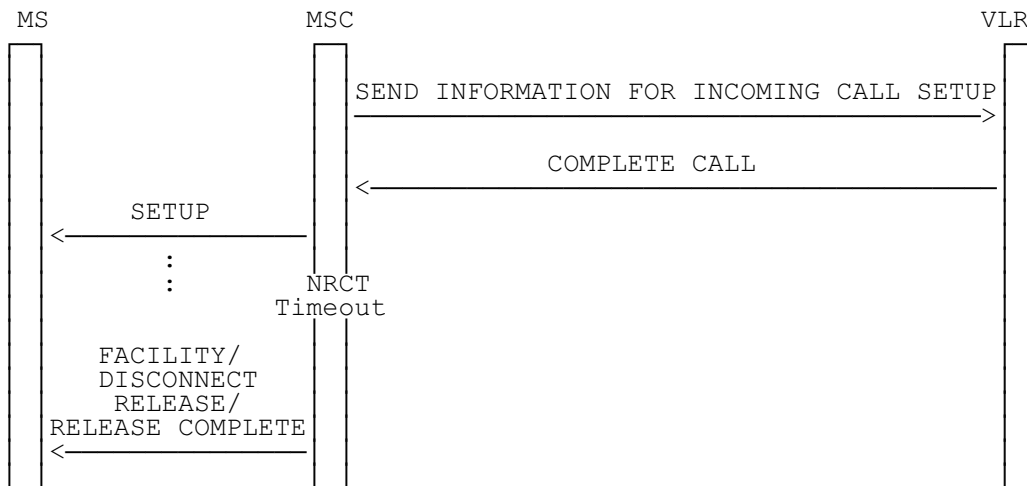


Figure 5.20: Signalling for notification of invocation of CFNRy supplementary service

The MSC obtains information on what supplementary services are active by analysing the SS-Data parameter in the MAP_COMPLETE_CALL service primitive on the B-interface. If this parameter indicates that CFNRy is active, then if required, either one of the DISCONNECT, RELEASE, RELEASE COMPLETE or FACILITY messages may be used to convey the required NotifySS operation in a Facility information element. Exact values of the parameter and parameter tags are indicated in TS GSM 04.80 and 04.82.

6 Call independent supplementary services management

6.1 MS initiated SS Management

6.1.1 Connection establishment phase

Call independent supplementary service management takes place on a separate, dedicated CM connection between the mobile station and the MSC. When a request to open such a connection arrives at the MSC, the MSC will request access permission from the VLR, as described in TS GSM 09.02. It will also assess the capabilities of the MS according to the screening indicator, as described in TS GSM 04.10 and 04.80. The signalling for this situation is shown in figure 6.1.

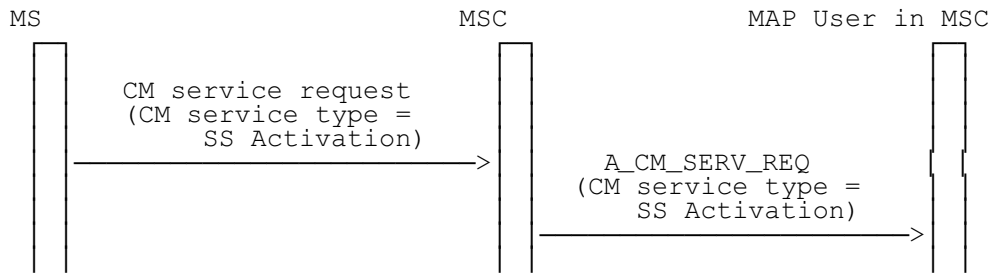


Figure 6.1: Signalling flow for SS connection establishment

6.1.2 Connection established

At this stage of the connection, the version negotiation mechanism will be invoked as described in section 3. The abstract definition of the protocol used for call independent SS operations is imported directly from TS GSM 09.02 into TS GSM 04.80.

The signalling for invocation of a supplementary service operation is shown in figure 6.2, while figure 6.3 shows the signalling for returning the result of the supplementary service operation. Tables 6.1 and 6.2 show the mapping of TS GSM 04.80 operation codes to MAP service primitives, and vice versa respectively. The detailed mapping of the contents of the facility information elements to the service primitives triggering the MAP user are described in section 6.3.

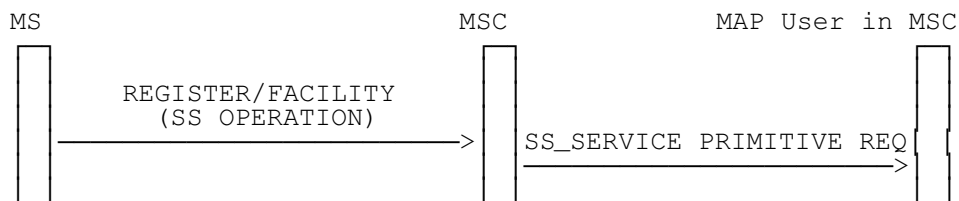


Figure 6.2: Signalling flow for SS operation invocation

Choice of service primitive on the basis of received facility information element is as follows:

Facility information element operation	Service primitive for MAP Service user
RegisterSS	A_REGISTER_SS
EraseSS	A_ERASE_SS
ActivateSS	A_ACTIVATE_SS
DeactivateSS	A_DEACTIVATE_SS
InterrogateSS	A_INTERROGATE_SS
RegisterPassword	A_REGISTER_PASSWORD
ProcessUnstructuredSS-Request	A_PROCESS_UNSTRUCTURED_SS_REQUEST

Table 6.1: Mapping of TS GSM 04.80 operations to TS GSM 09.02 service primitives

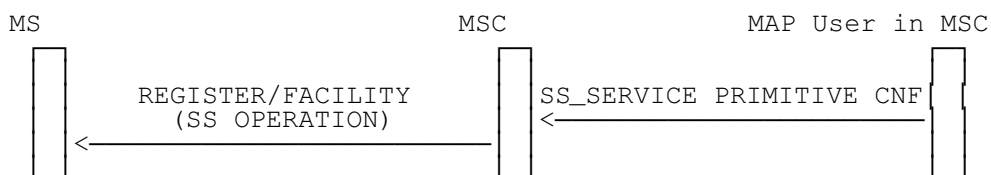


Figure 6.3: Signalling flow for SS operation return result

Choice of facility information element on the basis of received service primitive is as follows:

Service primitive for MAP Service user	Facility information element operation
A_REGISTER_SS	RegisterSS
A_ERASE_SS	EraseSS
A_ACTIVATE_SS	ActivateSS
A_DEACTIVATE_SS	DeactivateSS
A_INTERROGATE_SS	InterrogateSS
A_REGISTER_PASSWORD	RegisterPassword
A_PROCESS_UNSTRUCTURED_SS_REQUEST	ProcessUnstructuredSS-Request
A_UNSTRUCTURED_SS_REQUEST	UnstructuredSS-Request
A_UNSTRUCTURED_SS_NOTIFY	ProcessUnstructuredSS-Notify
A_GET_PASSWORD	GetPassword

Table 6.2: Mapping of TS GSM 09.02 service primitives to TS GSM 04.80 operations

6.1.3 Connection release

A supplementary service control connection is usually released by the network. The signalling for this situation is shown in figure 6.4.

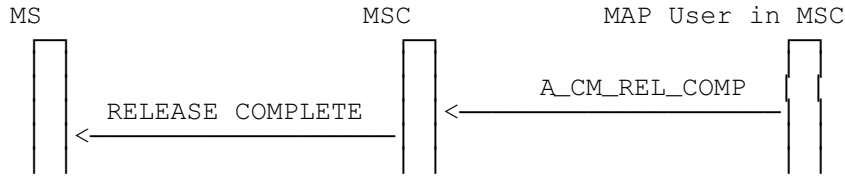


Figure 6.4: Signalling flow for SS connection release by the network

However, in exceptional circumstances, the MS may request release of the connection. The signalling for this situation is shown in figure 6.5.

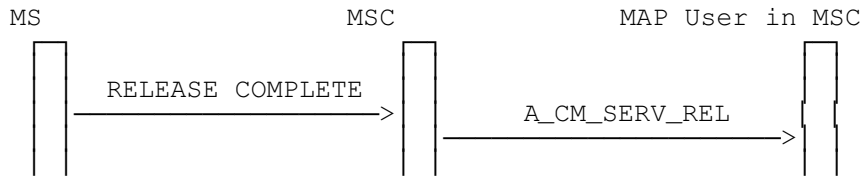


Figure 6.5: Signalling flow for SS connection release by the MS

6.2 NW initiated SS Management

6.2.1 Connection establishment phase

Call independent supplementary service management takes place on a separate, dedicated CM connection between the mobile station and the MSC. The MSC may need to open a connection towards the MS (as described in TS GSM 04.08) to send the Network initiated SS operation to the MS. Detailed mapping rules are described in section 6.3.

6.2.2 Connection established

The abstract definition of the protocol used for call independent SS operations is imported directly from TS GSM 09.02 into TS GSM 04.80.

The signalling for invocation of a Network initiated SS operation is shown in figure 6.6, while figure 6.7 shows the signalling for returning the result of supplementary service operation.

Choice of facility information element on the basis of received service primitive is described in table 6.2.

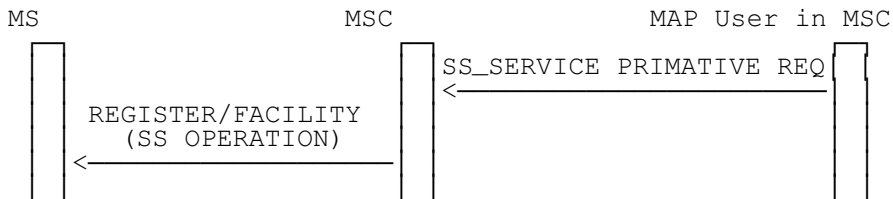


Figure 6.6: Signalling flow for Network Initiated SS operation invocation

Choice of service primitive on the basis of received facility information element is described in table 6.2.

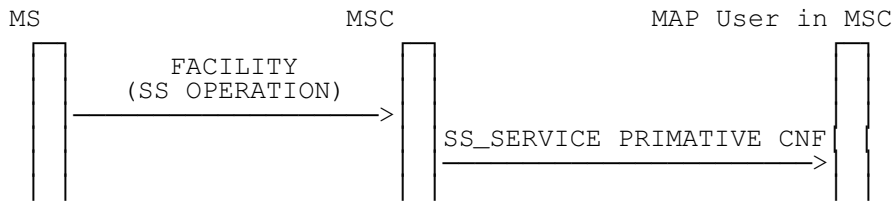


Figure 6.7: Signalling flow for Network Initiated SS operation return result

6.2.3 Connection release

A Network initiated SS connection is usually released by the network. The signalling for this situation is shown in figure 6.4.

However, in exceptional circumstances, the MS may request release of the connection. The signalling for this situation is shown in figure 6.5.

6.2.4 ForwardCheckSSIndication

When a mobile station first makes contact with the network after there has been a HLR restart, an indication may be sent by the HLR to the MS to inform of possible unintended consequences with respect to supplementary services. This indication is a separate service in the MAP (MAP_FORWARD_CHECK_SS_INDICATION service), and the abstract definition of its operation (ForwardCheckSSIndication) is imported into the TS GSM 04.80 protocol.

Upon receipt of ForwardCheckSSIndication from the VLR, the MSC shall create a new call independent SS transaction and then send ForwardCheckSSIndication (see TS GSM 04.10).

The MSC is only required to deliver ForwardCheckSSIndication if there is an active RR connection to the MS. The network shall not page the MS in order to deliver ForwardCheckSSIndication.



Figure 6.8: ForwardCheckSSIndication

6.3 Mapping of Operation Codes, Error Codes, Parameter Tags and Parameter Contents

6.3.1 Operation codes

The same operation codes are used for equivalent operations in TS GSM 04.80 and 09.02 for call independent supplementary service management.

6.3.2 Error codes

For call independent supplementary service management, the same error codes are used for equivalent error types in TS GSM 04.80 and 09.02.

The RETURN ERROR components are also constructed in the same way on both sides of the interface.

6.3.3 Parameter tags and parameter values

The same parameter tags and parameter values are used for equivalent parameters in TS GSM 04.80 and 09.02.

History

Document history	
March 1995	First Edition
November 1995	Converted into Adobe Acrobat Portable Document Format (PDF)