



EUROPEAN
TELECOMMUNICATION
STANDARD

ETS 300 529

October 1995

Second Edition

Source: ETSI TC-SMG

Reference: RE/SMG-030311P

ICS: 33.060.50

Key words: European digital cellular telecommunications system, Global System for Mobile communications (GSM)

**European digital cellular telecommunications system (Phase 2);
Technical realization of supplementary services
(GSM 03.11)**

ETSI

European Telecommunications Standards Institute

ETSI Secretariat

Postal address: F-06921 Sophia Antipolis CEDEX - FRANCE

Office address: 650 Route des Lucioles - Sophia Antipolis - Valbonne - FRANCE

X.400: c=fr, a=atlas, p=etsi, s=secretariat - **Internet:** secretariat@etsi.fr

Tel.: +33 92 94 42 00 - Fax: +33 93 65 47 16

Copyright Notification: No part may be reproduced except as authorized by written permission. The copyright and the foregoing restriction extend to reproduction in all media.

© European Telecommunications Standards Institute 1995. All rights reserved.

Contents

Foreword	5
1 General	7
1.1 Scope	7
1.2 Normative references	7
1.3 Definitions and abbreviations	8
2 Activation, deactivation, registration, erasure, interrogation and invocation	9
2.1 General	9
2.1.1 Definition of "state vectors"	9
2.1.2 Handling of service states at the HLR	10
2.1.2.1 Encoding of SS-Status	11
2.1.2.2 Invocation of services at the HLR	11
2.1.3 Handling of SS-Status at the VLR	11
2.1.3.1 Invocation of services at the VLR	12
2.1.3.2 Interrogation of the service at the VLR and notifications from VLR	12
2.1.4 Handling of SS-Status at the MS	12
2.2 Handling of call independent SS procedures with respect to basic service groups	12
2.3 Exceptional handling of basic service codes	13
3 Password handling	18
3.1 General	18
3.2 Registration of password	23
3.3 Use of password	23
3.4 Deactivation	26
4 Supplementary service data management	27
5 Format of description	27
History	28

Blank page

Foreword

This European Telecommunication Standard (ETS) has been produced by the Special Mobile Group (SMG) Technical Committee (TC) of the European Telecommunications Standards Institute (ETSI).

This ETS defines the technical realization of supplementary services for the European digital cellular telecommunications system (Phase 2).

This ETS corresponds to GSM Technical Specification (GSM-TS) GSM 03.11 version 4.9.1.

The specification from which this ETS has been derived was originally based on CEPT documentation, hence the presentation of this ETS may not be entirely in accordance with the ETSI/PNE rules.

Reference is made within this ETS to GSM-TSs (NOTE).

Reference is also made within this ETS to GSM xx.xx series. The specifications in the series can be identified, with their full title, within the normative reference Clause of this ETS by the first two digits of their GSM reference number e.g. GSM 09.xx series, refers to GSM 09.01, GSM 09.02, etc.

NOTE: TC-SMG has produced documents which give the technical specifications for the implementation of the European digital cellular telecommunications system. Historically, these documents have been identified as GSM Technical Specifications (GSM-TSs). These TSs may have subsequently become I-ETSs (Phase 1), or ETSs (Phase 2), whilst others may become ETSI Technical Reports (ETRs). GSM-TSs are, for editorial reasons, still referred to in current GSM ETSs.

Proposed transposition dates	
Date of adoption of this ETS:	31 October 1995
Date of latest announcement of this ETS (doa):	31 January 1996
Date of latest publication of new National Standard or endorsement of this ETS (dop/e):	31 July 1996
Date of withdrawal of any conflicting National Standard (dow):	31 July 1996

Blank page

1 General

1.1 Scope

This ETS describes the general aspects on how supplementary services in the GSM system are realized from a technical point of view.

Description of technical realization for specific supplementary services can be found in GSM 03.8x and 03.9x-series technical specifications.

All supplementary services may require signalling on the radio path. Signalling procedures and messages used are defined in the GSM 04.8x and 04.9x-series of technical specifications.

For some supplementary services information needs to be transferred between the home location register (HLR), the visitor location register (VLR) and the mobile services switching centre (MSC). Signalling procedures for such information transfer are defined in technical specification GSM 09.02.

Definitions and descriptions of supplementary services are given in the GSM 02.8x and 02.9x-series of technical specifications.

Definitions are given in technical specification GSM 02.04.

NOTE 1: The technical specifications on the technical realization of supplementary services do not distinguish between subscriber, user and customer, since all three do not fully cover the textual needs. Generally the term "subscriber" is used, even if this person is not having the subscription.

NOTE 2: The terms "he", "his" and "him" are used as abbreviation of "he/she", "his/her" and "him/her" respectively.

1.2 Normative references

This ETS incorporates by dated and undated reference, provisions from other publications. These normative references are cited at the appropriate places in the text and the publications are listed hereafter. For dated references, subsequent amendments to or revisions of any of these publications apply to this ETS only when incorporated in it by amendment or revision. For undated references, the latest edition of the publication referred to applies.

- [1] GSM 01.04 (ETR 100): "European digital cellular telecommunications system (Phase 2); "Abbreviations and acronyms".
- [2] GSM 02.04 (ETS 300 503): "European digital cellular telecommunications system (Phase 2); General on supplementary services".
- [3] GSM 02.30 (ETS 300 511): "European digital cellular telecommunications system (Phase 2); Man-Machine Interface (MMI) of the Mobile Station (MS)".
- [4] GSM 03.81 (ETS 300 542): "European digital cellular telecommunications system (Phase 2); Line identification supplementary services - Stage 2".
- [5] GSM 03.82 (ETS 300 543): "European digital cellular telecommunications system (Phase 2); Call Forwarding (CF) supplementary services - Stage 2".
- [6] GSM 03.83 (ETS 300 544): "European digital cellular telecommunications system (Phase 2); Call Waiting (CW) and Call Hold (HOLD) supplementary services - Stage 2".
- [7] GSM 03.84 (ETS 300 545): "European digital cellular telecommunications system (Phase 2); Multi Party (MPTY) supplementary services - Stage 2".

- [8] GSM 03.85 (ETS 300 546): "European digital cellular telecommunications system (Phase 2); Closed User Group (CUG) supplementary services - Stage 2".
- [9] GSM 03.86 (ETS 300 547): "European digital cellular telecommunications system (Phase 2); Advice of Charge (AoC) supplementary services - Stage 2".
- [10] GSM 03.88 (ETS 300 548): "European digital cellular telecommunications system (Phase 2); Call Barring (CB) supplementary services - Stage 2".
- [11] GSM 03.90 (ETS 300 549): "European digital cellular telecommunications system (Phase 2); Unstructured supplementary services operation - Stage 2".
- [12] GSM 04.80 (ETS 300 564): "European digital cellular telecommunications system (Phase 2); Mobile radio interface layer 3 supplementary services specification Formats and coding".
- [13] GSM 04.81 (ETS 300 565): "European digital cellular telecommunications system (Phase 2); Line identification supplementary services - Stage 3".
- [14] GSM 04.82 (ETS 300 566): "European digital cellular telecommunications system (Phase 2); Call Forwarding (CF) supplementary services - Stage 3".
- [15] GSM 04.83 (ETS 300 567): "European digital cellular telecommunications system (Phase 2); Call Waiting (CW) and Call Hold (HOLD) supplementary services - Stage 3".
- [16] GSM 04.84 (ETS 300 568): "European digital cellular telecommunications system (Phase 2); Multi Party (MPTY) supplementary services - Stage 3".
- [17] GSM 04.85 (ETS 300 569): "European digital cellular telecommunications system (Phase 2); Closed User Group (CUG) supplementary services - Stage 3".
- [18] GSM 04.86 (ETS 300 570): "European digital cellular telecommunications system (Phase 2); Advice of Charge (AoC) supplementary services - Stage 3".
- [19] GSM 04.88 (ETS 300 571): "European digital cellular telecommunications system (Phase 2); Call Barring (CB) supplementary services - Stage 3".
- [20] GSM 04.90 (ETS 300 572): "European digital cellular telecommunications system (Phase 2); Unstructured supplementary services operation - Stage 3".
- [21] GSM 09.02 (ETS 300 599): "European digital cellular telecommunications system (Phase 2); Mobile Application Part (MAP) specification".

1.3 Definitions and abbreviations

Abbreviations used in this ETS are listed in GSM 01.04.

2 Activation, deactivation, registration, erasure, interrogation and invocation

2.1 General

Activation, deactivation, registration, erasure, interrogation and invocation are defined independently from a particular supplementary service. Whether they are applicable to a particular supplementary service or not is defined in the corresponding TS GSM 03.8x and 03.9x-series.

The invocation of a supplementary service is executed as described in the corresponding stage 2 description and always includes a MSC and a location register.

When a MSC receives a request for either activation/deactivation or registration/erasure or an interrogation, it invokes one of the following procedures.

The MSC then can:

- contact only the current VLR (e.g. interrogation of a call forwarding conditional supplementary service);
- contact only the HLR (e.g. interrogation of the supplementary service call forwarding unconditional);
- contact the HLR, after which the HLR updates the VLR (e.g. registration of a forwarding number for a conditional call forwarding supplementary service).

Which of the above listed procedures is applied for a call independent supplementary service operation is described in the corresponding TS GSM 03.8x and 03.9x-series.

Successful activation, deactivation, registration and erasure change the service state at the HLR. These transitions (if applicable to a particular service) are defined in the GSM 03.8x and 03.9x-series. Note that the HLR may also change the service state due to "HLR Induction" (see subclause 2.1.1).

In connection with supplementary service operations the served subscriber or remote subscribers may get notifications from the network.

2.1.1 Definition of "state vectors"

In order to provide a tool to define service states the concept of a "state vector" is introduced. The state vector is used to represent the state of the service in terms of four variables:

- 1) Provisioning State,
possible values are "Provisioned" or "Not Provisioned";
- 2) Registration State,
possible values are "Registered", "Erased", or "Not Applicable";
- 3) Activation State,
possible values are "Not Active", "Active and Operative" or "Active and Quiescent";
- 4) HLR Induction State,
possible values are "Induced" or "Not Induced".

The state vector represents the state of the service by using all four variables together. The state vector is represented using the notation:

(Provisioning State, Registration State, Activation State, HLR Induction State)

e.g.: (Provisioned, Registered, Not Active, Not Induced).

Note that the state vector is a logical (not a physical) representation of the service state. Note also that though some parts of the state vector are similar to elements of SS-Status the mapping between the state vector and SS-Status is not one to one. The use of state vectors is not intended to specify any particular implementation internally in a node. There is a relationship specified between the state vector and parts of the transfer syntax. This relationship is not a direct one-to-one mapping.

The following text specifies the semantics of each variable in the state vector.

The three variables "Provisioning State", "Registration State" and "Activation State" are used to represent the state of the service according to the normal behaviour based on service provider and user actions.

The "HLR Induction State" records whether or not the HLR has temporarily induced the service (e.g. if the VLR does not support CUG, the HLR may induce an outgoing barring service). The Provisioning State, Registration State and Activation State are not affected by HLR induction of a service.

Provisioning State

- has value "provisioned", if the subscriber has a subscription to the service;
- has value "Not Provisioned" otherwise.

Registration State

- has value "Not Applicable", if registration is not applicable to the service;
- has value "Registered", if registration is applicable, and there is registration data available;
- has value "Erased" otherwise.

Activation State

- has value "Active and Operative", if the service is in a state where it can be invoked (and this is not due to HLR induction);
- has value "Active and Quiescent", if the service is in a state where it cannot be invoked, but where it will automatically move to the "Active and Operative" state when conflicting conditions are removed;
- has value "Not Active" otherwise.

HLR Induction State

- has the value "Induced" if the HLR has induced the service (e.g. if the VLR does not support CUG, the HLR may induce an outgoing barring service);
- has the value "Not Induced" otherwise.

For further information about how HLR induction applies to particular services refer to the GSM 03.8x and 03.9x-series.

2.1.2 Handling of service states at the HLR

Valid states (represented by state vectors) are defined on a service-by-service basis in the GSM 03.8x and 03.9x-series. For each service the set of valid states represents the logical states that can exist in the HLR. The HLR contains the master copy of service state information.

2.1.2.1 Encoding of SS-Status

To send service state information to the VLR or the MS, the HLR often uses the SS-Status parameter. This parameter contains four bits (referred to here as the "P bit", "R bit", "A bit" and "Q bit"). In a phase 2 context the HLR shall encode the SS-Status using the mapping defined in this subclause from the service states to SS-Status.

If the HLR Induction State is "Not Induced" then:

- If the Provisioning State is "Provisioned", then the P bit shall be 1, otherwise the P bit shall be 0.
- If the Registration State is "Registered", the R bit shall be 1. If the Registration State is "Not Registered" the R bit shall be 0. If the Registration State is "Not Applicable" the R bit shall be either 0 or 1.
- If the Activation State is "Active and Operative" the A bit shall be 1 and the Q bit shall be 0. If the Activation State is "Active and Quiescent" the A bit shall be 1 and the Q bit shall be 1. If the Activation State is "Not Active" the A bit shall be 0 and the Q bit shall be either 0 or 1.

If the HLR Induction State is "Induced" then the P bit shall be 1, the R bit shall be 0 or 1, the A bit shall be 1 and the Q bit shall be 0.

HLR Induction State	"Not Induced"	P bit	R bit	A bit	Q bit
Provisioning State	"Provisioned"	1			
	"Not Provisioned"	0			
Registration State	"Registered"		1		
	"Not Registered"		0		
	"Not Applicable"		0/1		
Activation State	"Active and Operative"			1	0
	"Active and Quiescent"			1	1
	"Not Active"			0	0/1

	P bit	R bit	A bit	Q bit
HLR Induction State "Induced"	1	0/1	1	0

Table 2.1: Encoding of the P, R, A and Q bits in the SS-Status parameter

2.1.2.2 Invocation of services at the HLR

If the service can be invoked at the HLR (e.g. to bar an incoming call) then invocation is possible only if the Activation State is "Active and Operative". Note that the concept of HLR induction does not apply to services invoked at the HLR as the HLR can invoke the effect of these services without needing to induce them first.

2.1.3 Handling of SS-Status at the VLR

The VLR shall store sufficient information to support VLR based invocation, interrogation and notifications from the VLR to the MS.

The VLR shall not check the internal consistency of SS-Status values received from the HLR (i.e. it shall not impose any rules relating values of some bits in SS-Status to other bits). The VLR shall not check that the SS-Status received from the HLR is valid according to the VLR's definition of the relevant service.

2.1.3.1 Invocation of services at the VLR

The ability to invoke the service at the VLR (e.g. to forward a call, or create an MPTY call) is based on the A and Q bits of SS-Status. The service can only be invoked if A=1 and Q=0. Other bits in SS-Status are not relevant to invocation at the VLR.

2.1.3.2 Interrogation of the service at the VLR and notifications from VLR

If the VLR sends a notification or an interrogation result that includes an SS-Status parameter the VLR shall set the P, R, A and Q bits to the same values received from the HLR. Unless stated otherwise in individual service specifications, if the service is not provisioned and the VLR has not received a value for SS-Status from the HLR then if the VLR has to send SS-Status for that service it shall set the P, R, A, and Q bits to 0.

2.1.4 Handling of SS-Status at the MS

The MS has to interpret SS-Status values received from the network. The following information is provided as guidance as to how to treat the SS-Status information:

- The P, A and Q bits are relevant for all phase 2 supplementary services for which the MS may receive SS-Status information from the network.
- The value of the R bit is only relevant if registration is applicable to the supplementary service the SS-Status relates to.
- The A and Q bits shall be treated as a pair with the following meanings assumed:
If A=1 and Q=0, then the service is "Active and Operative";
If A=1 and Q=1, then the service is "Active and Quiescent";
If A=0 and Q=0 or 1, then the service is deactivated.
- The MS may assume that if P=0 then the service is also deactivated (and if registration is applicable erased).
- If registration is applicable to the service then the MS may assume that if R=0 then the service is also deactivated.

2.2 Handling of call independent SS procedures with respect to basic service groups

A request for registration, erasure, activation, deactivation or interrogation of a supplementary service always refers to a basic service group.

The basic service group may be either an elementary basic service group (defined in TS GSM 02.04) or a collective basic service group (defined in TS GSM 02.30).

The following text and figure 2.1 describe the general handling of call independent SS procedures in the destination entity with respect to basic service groups.

- The VLR or HLR (i.e. the destination entity) shall check the received request for general problems (see figure 2.1 sheet 2 and sheet 3).
- In case of general error the procedure shall be terminated by sending an error towards the MS (see figure 2.1 sheet 1).
- If there is no general problem, the HLR or VLR shall split the received basic service group (BSG) into elementary basic service groups (EBSG) and continue with separate handling of each elementary basic service group (see figure 2.1 sheet 1).
Note that the received basic service group may be an elementary basic service group. In this case splitting is not required.

- Elementary basic service groups shall be ignored if:
 - there is no basic service provisioned in the group; or
 - the supplementary service is not applicable for any basic service within this elementary basic service group;(see figure 2.1 sheet 4).

Note that in case the SS is either not provisioned or all the elementary basic service groups were ignored a general error will be returned (see above).

For interrogation the following handling continues (see figure 2.1 sheet 4):

- For all other elementary basic service groups the information requested will be returned to the MS and the procedure is terminated.

For registration/erasure and activation/deactivation the following handling continues (see figure 2.1 sheet 4):

- For all other elementary basic service groups the requested procedure will either be executed or rejected due to interaction with other supplementary services.
- If the request cannot be accepted for any of these elementary basic service groups due to interaction, the corresponding error will be returned and the procedure is terminated.
- If the request was executed for all of these elementary basic service groups an acknowledgement is returned towards the MS and the procedure is terminated.
Note that this acknowledgement will include the same basic service group as received in the request.
- In case the request is accepted for some but not for all of these elementary basic service groups, partial acceptance will be signalled towards the MS and the procedure will be terminated.

The return errors for supplementary service operations and applicability of these errors are defined in TS GSM 04.80. Detailed description of call independent handling for a specific supplementary service is described in GSM 03.8x and 03.9x-series of technical specifications.

2.3 Exceptional handling of basic service codes

When an individual teleservice code or bearer service code is sent by an MS instead of an elementary basic service group the network shall treat such a request as a request for the corresponding elementary basic service group.

The response to such a request shall include the elementary basic service group code of this basic service code if this is required by the protocol or application.

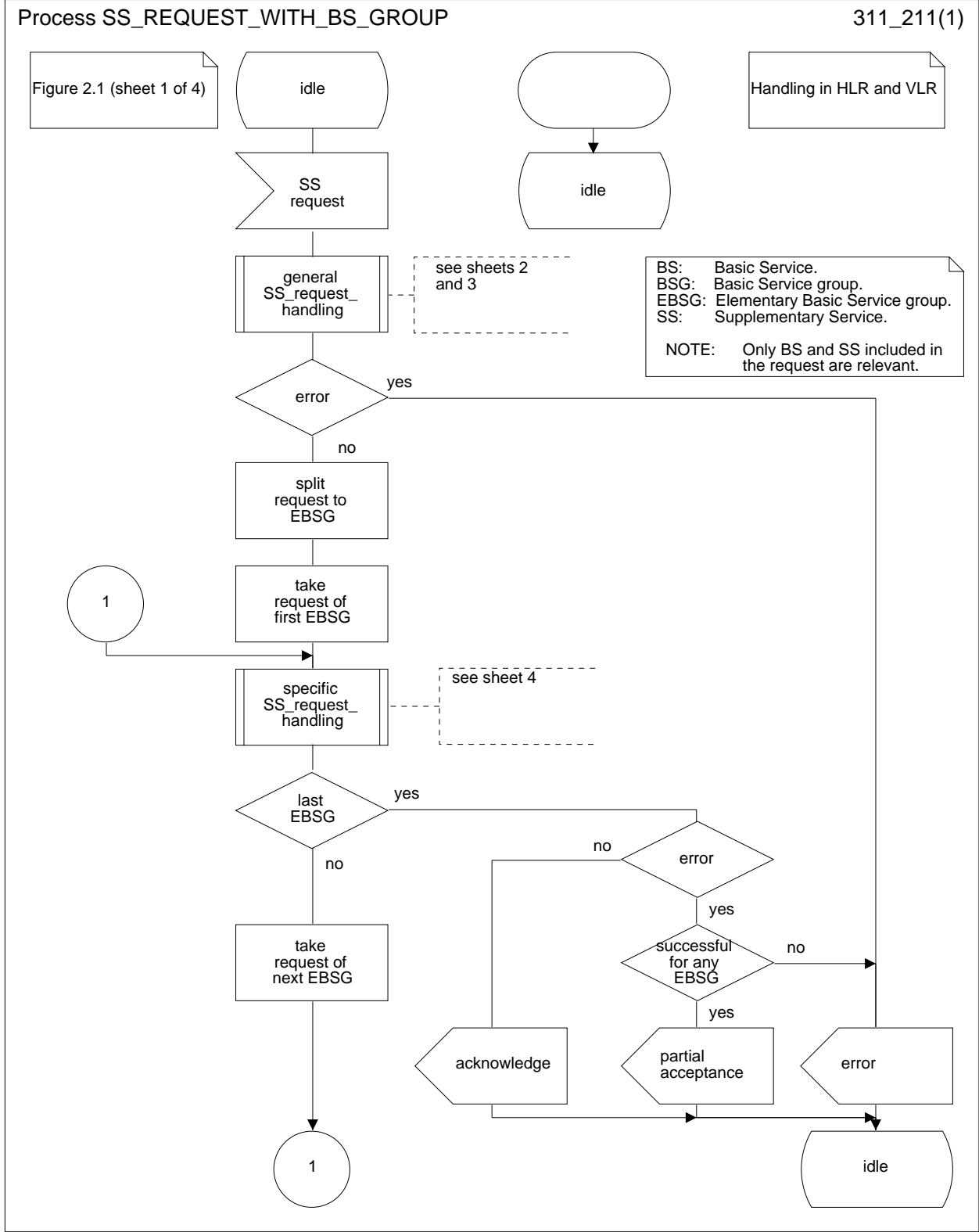


Figure 2.1 (sheet 1 of 4): Handling of call independent SS procedures with respect to basic service groups

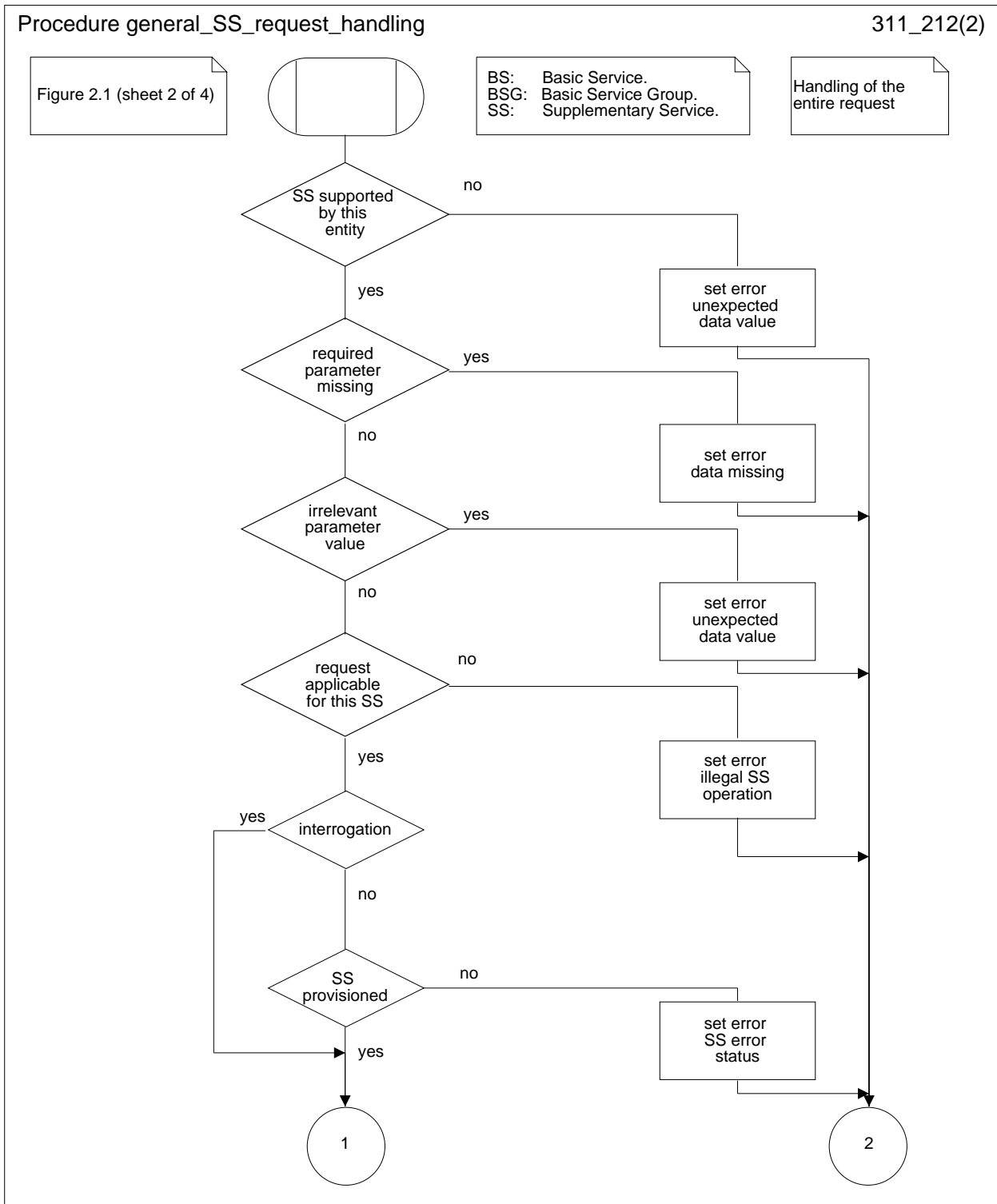


Figure 2.1 (sheet 2 of 4): Handling of call independent SS procedures with respect to basic service groups

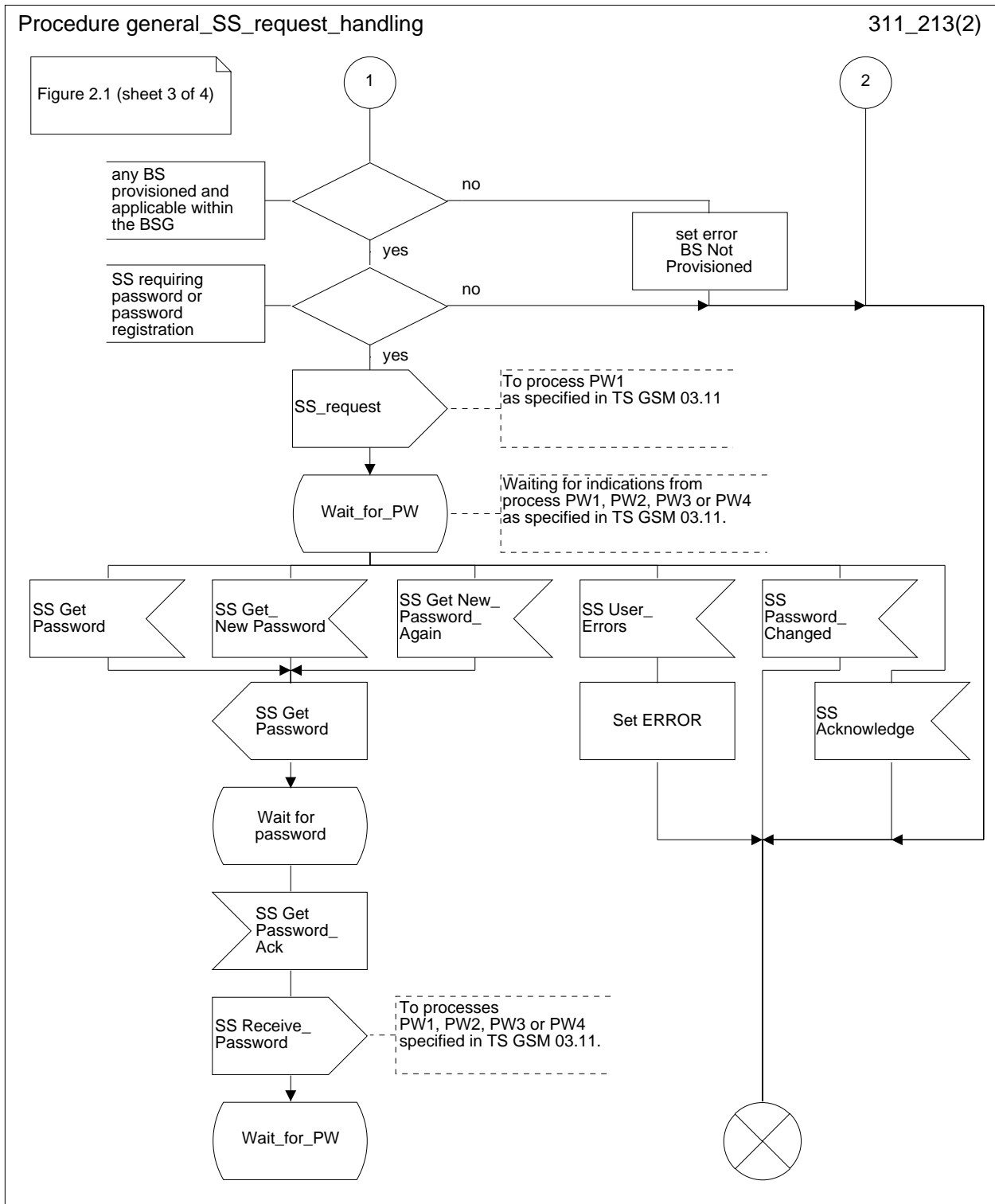


Figure 2.1 (sheet 3 of 4): Handling of call independent SS procedures with respect to basic service groups

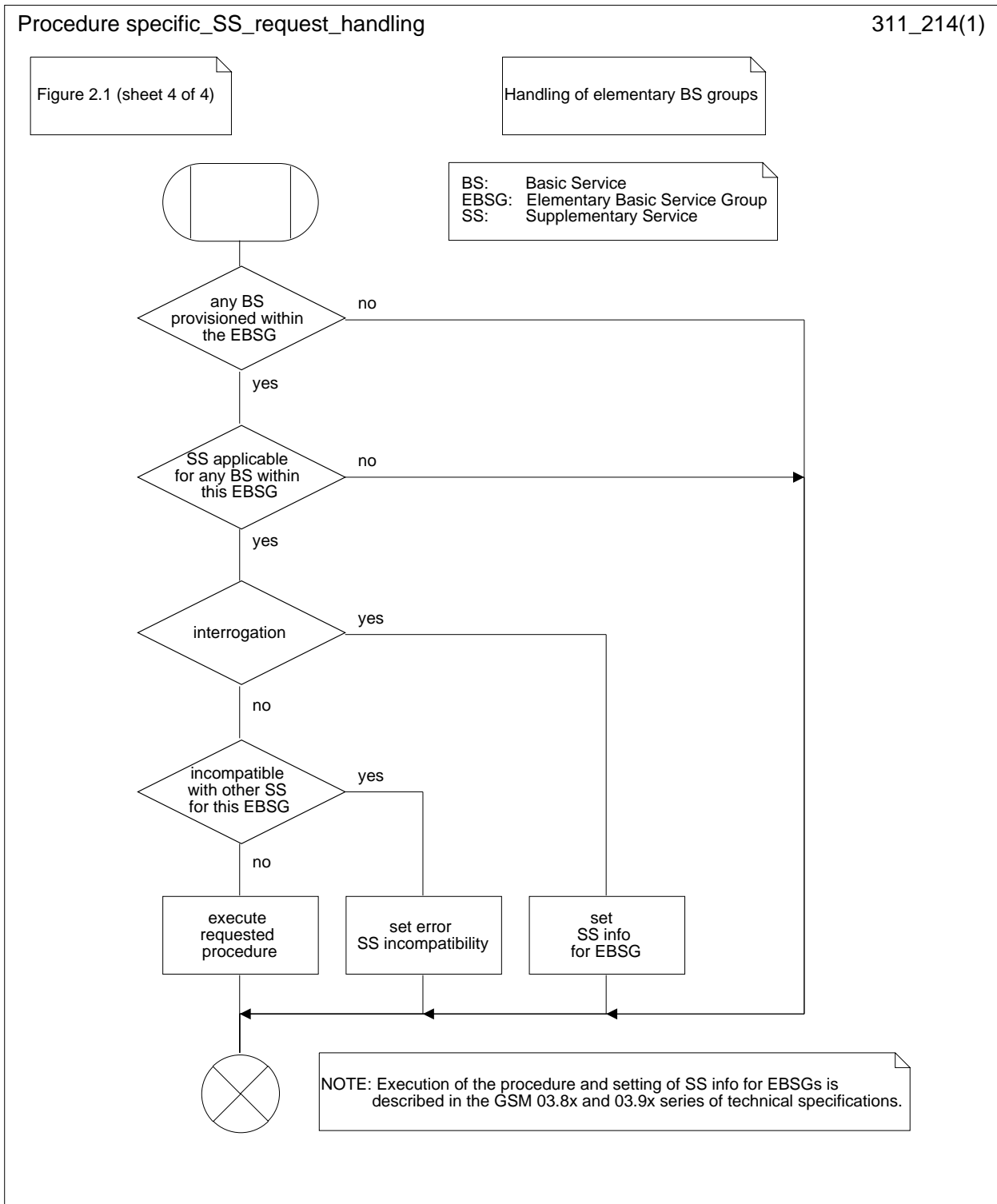


Figure 2.1 (sheet 4 of 4): Handling of call independent SS procedures with respect to basic service groups

3 Password handling

3.1 General

Some supplementary services can be subscribed with the option "control of supplementary service by subscriber using password" as described in the corresponding GSM 03.8x and 03.9x-series of technical specifications. These services are referenced in the following as protected supplementary services.

The password is stored in the HLR only.

It has to be memorised by the network, if a wrong password has been used. Therefore, the HLR stores the value of the Wrong Password Attempts counter (WPA).

If a password check is done with an incorrect password, the WPA is incremented by one. If a password check is passed, WPA is set to zero. If WPA exceeds the value three, the subscription option "control of supplementary service" is set to "by the service provider". This makes registration of password and activation or deactivation of protected supplementary services impossible (see TS GSM 02.04).

When the service provider registers a password, the WPA is set to zero.

When an attempt to perform an operation requiring a password is received by the network, the network has to check whether the requesting subscriber has subscribed to the option "control of supplementary service by subscriber using password". This is shown in figure 3.1 (function PW1).

If this option has the value "by the service provider" the WPA has to be checked. When WPA exceeds three, then more than three attempts with a wrong password have been made and the appropriate message will be sent to the user. If the value of WPA is less than or equal to three, then the subscriber has not subscribed to "control of supplementary service by subscriber using password".

When a password is supplied, it has to be checked, whether it is identical to the one stored. If this applies, then WPA is reset to zero. Otherwise WPA is incremented by one and dependent of the value of the counter, the network shall request the password again, or shall send an error message and update the subscription option as shown in figure 3.2 (function PW2).

After the input of a wrong password more than three consecutive times, the only possibility to reset the Wrong Password Attempts counter (WPA) is, to register a new password by the service provider.

Figures 3.3 and 3.4 show the procedures executed by the network in order to check the format (function PW3) and to check the new password (function PW4).

Process PW1

311_31(1)

Figure 3.1

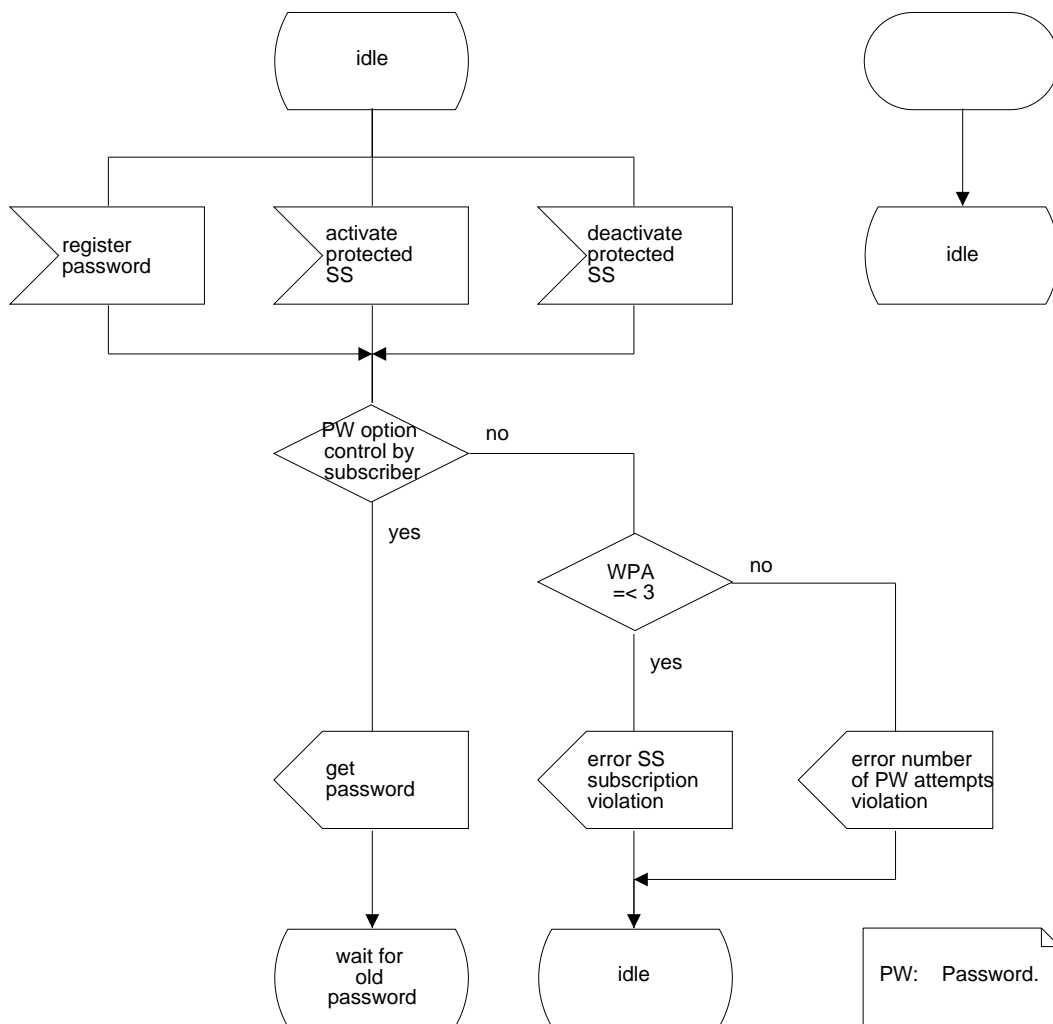


Figure 3.1: PW1; Check of subscription option (HLR)

Figure 3.2

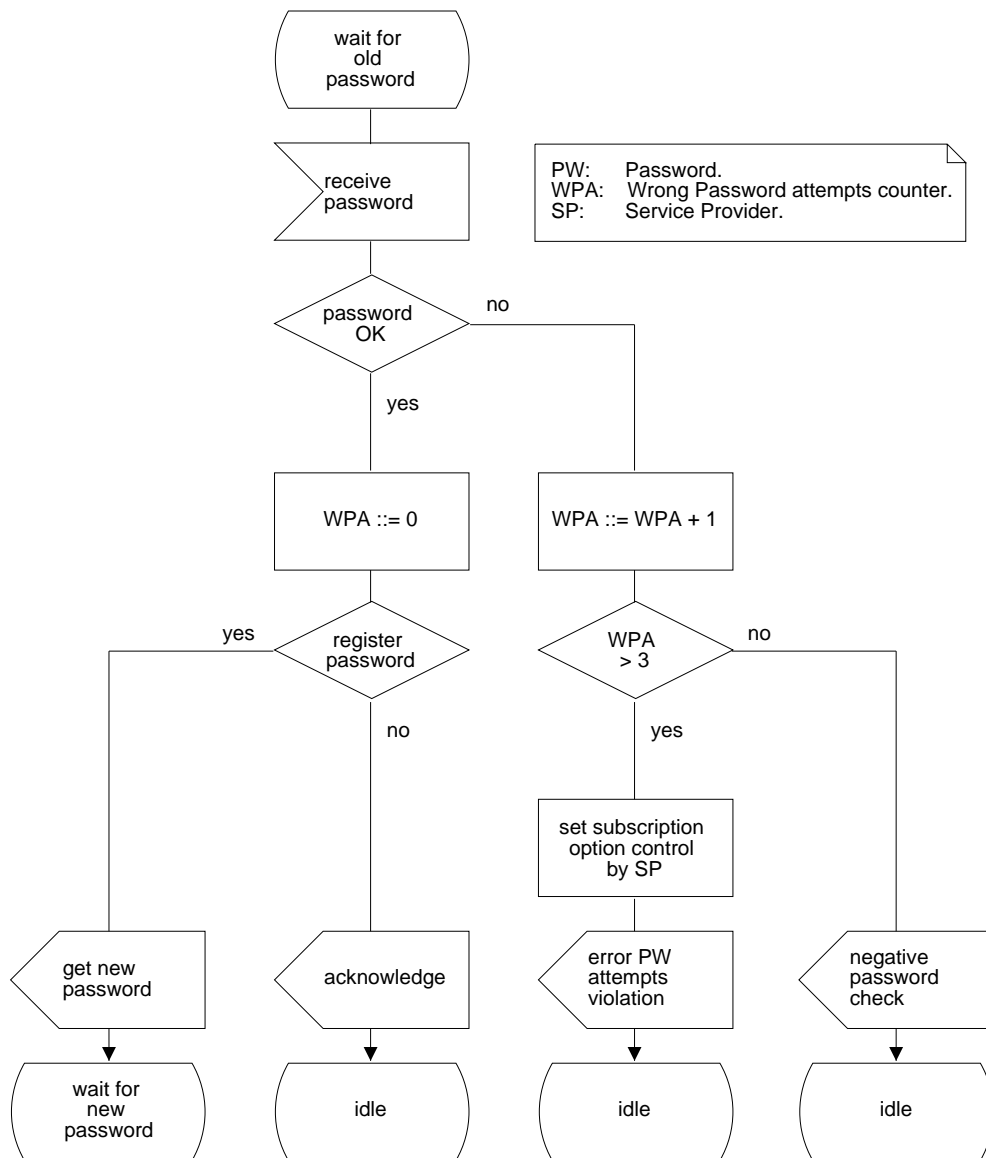


Figure 3.2: PW2; Check of password input (HLR)

Process PW3

311_33(1)

Figure 3.3

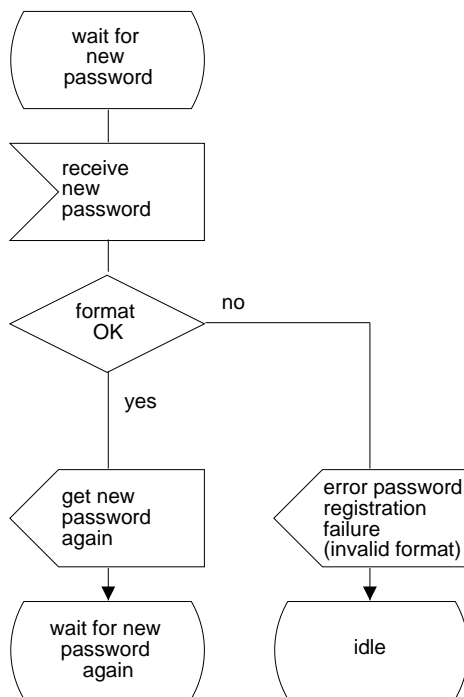


Figure 3.3: PW3; Format check (HLR)

Process PW4

311_34(1)

Figure 3.4

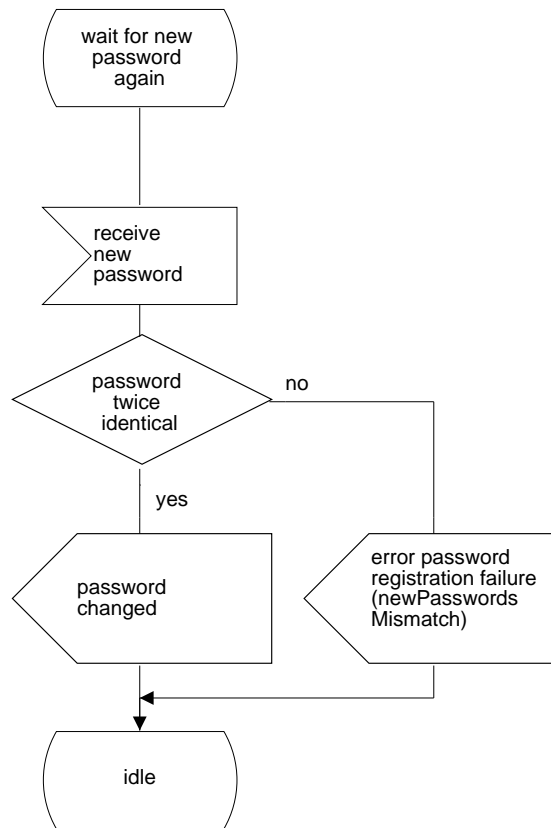


Figure 3.4: PW4; Check of new password (HLR)

3.2 Registration of password

If the served mobile subscriber at provision time has selected the subscription option "control of supplementary service by subscriber using password", the service provider has to register a password at provision time. Furthermore the served mobile subscriber can change the password by an appropriate control procedure at any time. The control procedure consists of three steps: first, the old password has to be provided. Secondly, the new password has to be given, after which it has to be verified by providing it once more, see figure 3.5.

If the served mobile subscriber at provision time has selected the subscription option "control of supplementary service by the service provider" an attempt to register a password will be denied and the served mobile subscriber should receive a notification.

The subscriber can register a new password, thus causing the previous registration to be overridden, see figure 3.5.

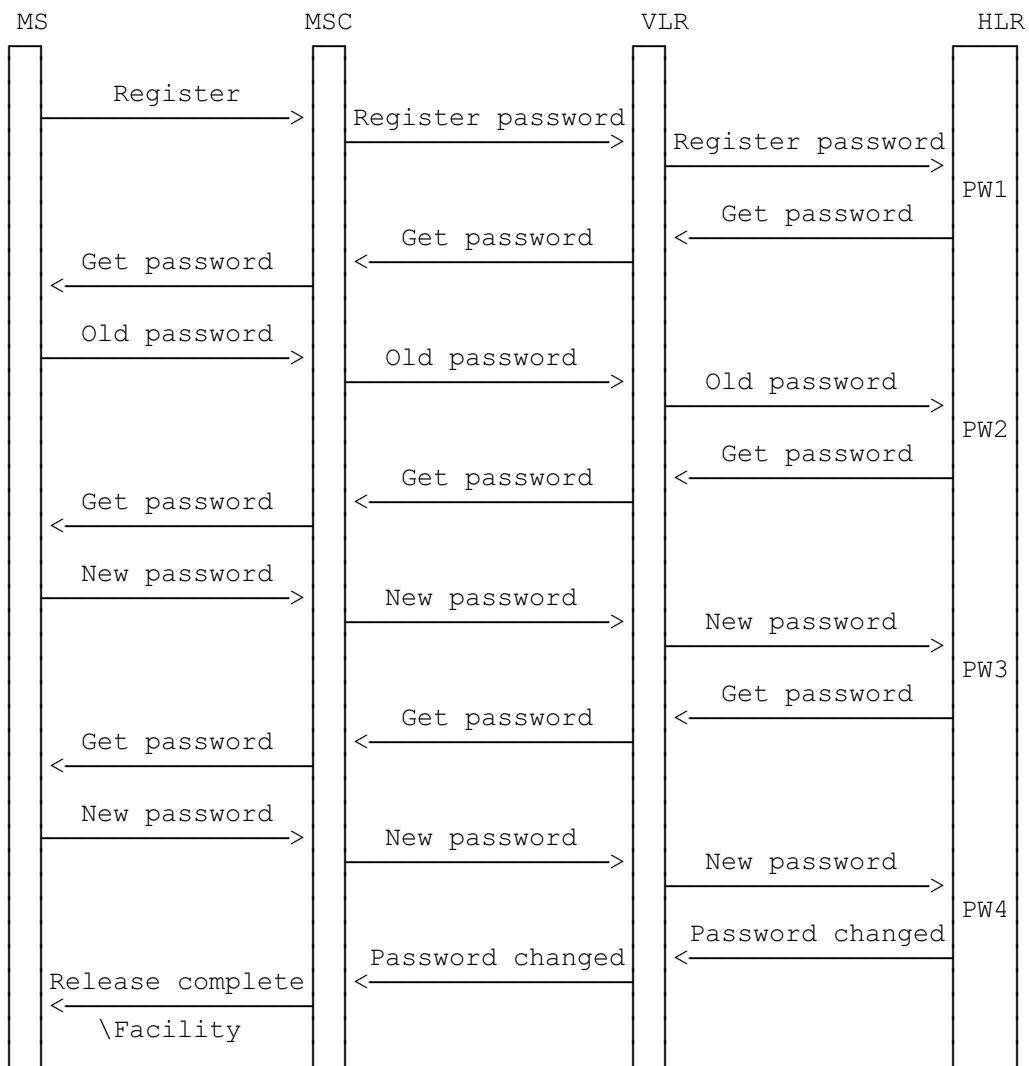
3.3 Use of password

If the served mobile subscriber at provision time has selected the subscription option "control of supplementary service by subscriber using password" the supplementary service is activated only if the subscriber provides the correct password to the network.

If the served mobile subscriber at provision time has selected the subscription option "control of supplementary service by the service provider", the supplementary service cannot be activated by the subscriber. The activation has to be performed by the service provider. An attempt to activate the service will be denied and the served mobile subscriber should receive a notification.

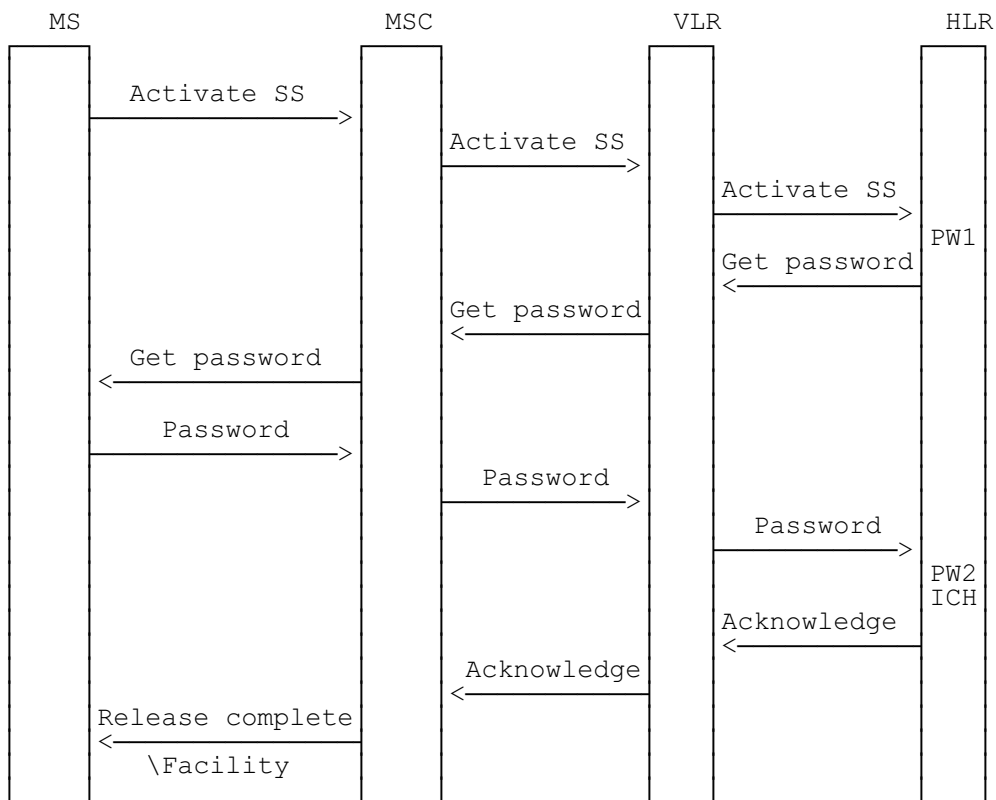
If the served mobile subscriber at provision time has selected the subscription option "control of supplementary service by subscriber using password", and if a wrong password is entered to activate the service the supplementary service will not be activated and the served mobile subscriber is notified.

The information flow for activation of a protected supplementary service is shown in figure 3.6.



NOTE: PW1, PW2 and PW3 indicate password handling programs.

Figure 3.5: Registration of a new password



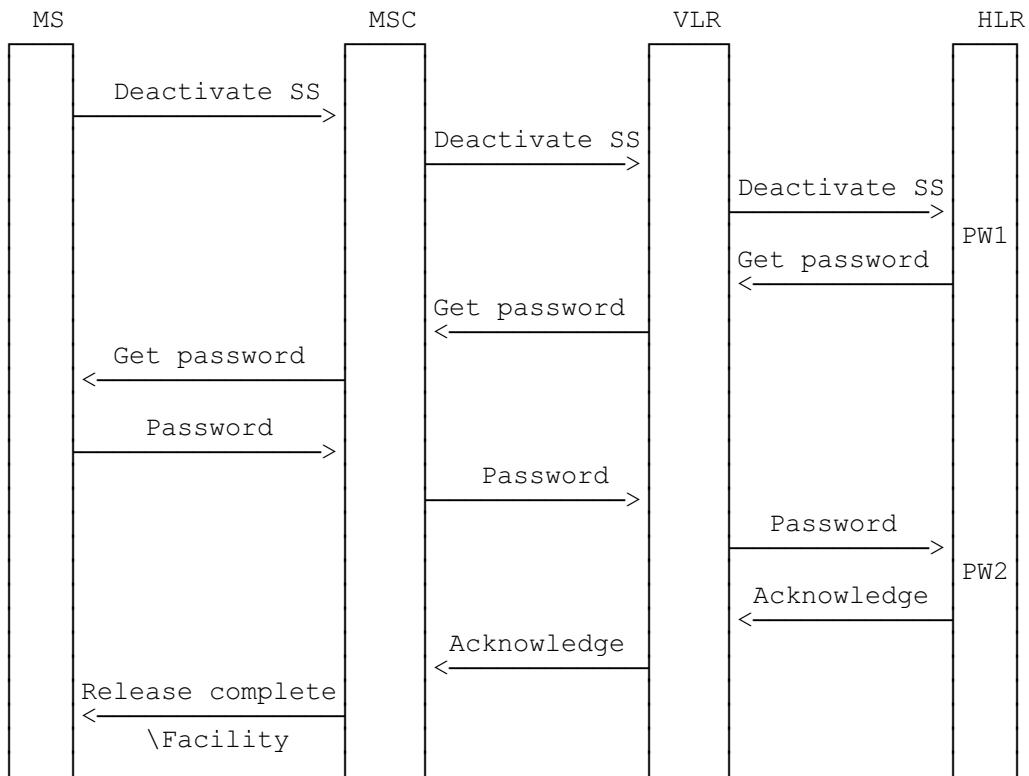
NOTE: SS indicates any of the protected supplementary services.
 PW1 and PW2 indicate password handling programs.
 ICH indicates interaction checks if necessary.

Figure 3.6: Activation of protected supplementary service

3.4 Deactivation

The procedure for activation, described in subclause 3.3, is valid also correspondingly for deactivation.

The information flow for deactivation of protected supplementary service is shown in figure 3.7.



NOTE: SS indicates any of the protected supplementary services. PW1 and PW2 indicate password handling programs.

Figure 3.7: Deactivation of protected supplementary service

4 Supplementary service data management

For the supplementary services that are considered "activated as a result of provision", when the service is provisioned the following applies:

when subscription data is sent from the HLR to the VLR, and
when an interrogation is sent from the HLR or VLR to the MS

- "Provision status" indicators shall be set to "Provisioned";
- "Activation status" indicators shall be set to "Active".

5 Format of description

The supplementary services are described according to the following format:

- | | |
|---------------|----------------------------------|
| subclause x.1 | Functions and information flows; |
| subclause x.2 | Information stored in HLR; |
| subclause x.3 | Information stored in VLR; |
| subclause x.4 | Handover. |

History

Document history	
October 1993	Public Enquiry PE 51: 1993-11-01 to 1994-02-25
November 1994	Vote V69: 1994-11-21 to 1995-01-13
March 1995	First Edition
May 1995	Unified Approval Procedure UAP 29: 1995-05-22 to 1995-09-15
October 1995	Second Edition
November 1995	Converted into Adobe Acrobat Portable Document Format (PDF)