



**E**UROPEAN  
**T**ELECOMMUNICATION  
**S**TANDARD

**DRAFT**  
pr **ETS 300 392-12-1**

December 1998

---

Source: TETRA

Reference: DE/TETRA-03001-12-01

ICS: 33.020

**Key words:** TETRA, V+D, CLIP, CLIR, COLP, COLR

**Terrestrial Trunked Radio (TETRA);  
Voice plus Data (V+D);  
Part 12: Supplementary services stage 3;  
Sub-part 1: Call Identification (CI)**

**ETSI**

European Telecommunications Standards Institute

**ETSI Secretariat**

**Postal address:** F-06921 Sophia Antipolis CEDEX - FRANCE

**Office address:** 650 Route des Lucioles - Sophia Antipolis - Valbonne - FRANCE

**Internet:** [secretariat@etsi.fr](mailto:secretariat@etsi.fr) - <http://www.etsi.org>

Tel.: +33 4 92 94 42 00 - Fax: +33 4 93 65 47 16

---

**Copyright Notification:** No part may be reproduced except as authorized by written permission. The copyright and the foregoing restriction extend to reproduction in all media.

© European Telecommunications Standards Institute 1998. All rights reserved.



## Contents

Foreword .....		7
1	Scope .....	9
2	Normative references .....	10
3	Definitions, symbols and abbreviations .....	11
3.1	Definitions .....	11
3.2	Symbols .....	11
3.3	Abbreviations .....	11
4	Signalling protocol for the support of SS-CLIP and SS-CLIR.....	12
4.1	SS-CLIP and SS-CLIR description .....	12
4.1.1	SS-CLIP service description.....	12
4.1.1.1	General.....	12
4.1.1.2	SS-CLIP services offered over the TNSSSAP .....	12
4.1.1.3	INFORM1 indication .....	12
4.1.2	Parameter description .....	13
4.1.3	SS-CLIR description.....	13
4.1.3.1	General.....	13
4.1.3.2	SS-CLIR services offered over the TNSSSAP .....	13
4.1.3.2.1	INVOCATION request .....	14
4.1.3.2.2	INFORM2 indication.....	14
4.1.3.2.3	INFORM3 indication.....	14
4.1.4	Parameter description .....	14
4.2	SS-CLIP and SS-CLIR operational requirements.....	15
4.2.1	SS-CLIP operational requirements.....	15
4.2.1.1	Served user MS/LS.....	15
4.2.1.2	Originating SwMI .....	15
4.2.1.3	Group controlling SwMI .....	15
4.2.1.4	Terminating SwMI.....	15
4.2.2	SS-CLIR operational requirements .....	15
4.2.2.1	Served user MS/LS.....	15
4.2.2.2	Originating SwMI .....	15
4.2.2.3	Group controlling SwMI .....	15
4.2.2.4	Terminating SwMI.....	16
4.3	SS-CLIP and SS-CLIR coding requirements .....	16
4.3.1	Operations.....	16
4.3.2	SS-CLIP and SS-CLIR PDUs.....	16
4.3.2.1	Modified U-SETUP PDU.....	16
4.3.2.2	EXTERNAL NUMBER PDU .....	16
4.3.3	TETRA PDU information element coding for SS-CLIP and SS-CLIR .....	16
4.3.3.1	U-SETUP CLIR (RESTRICT) .....	16
4.3.3.2	Notification indicator information element.....	16
4.3.3.3	Numbering Plan Identifier .....	16
4.3.3.4	Type of Number .....	17
4.3.3.5	Screening Indicator.....	17
4.3.3.6	SS-CLIR PDU Type .....	17
4.3.4	Messages .....	17
4.4	SS-CLIP and SS-CLIR state definitions.....	17
4.4.1	SS-CLIP state definitions .....	17
4.4.1.1	States at the served user MS/LS .....	17
4.4.1.2	States at the group controlling SwMI .....	17
4.4.1.3	States for SS-CLIP invocation and operation .....	17
4.4.1.4	States at the served user SwMI.....	18
4.4.1.5	States for SS-CLIP invocation and operation .....	18
4.4.2	SS-CLIR state definitions .....	18

	4.4.2.1	States at the served user MS/LS .....	18
	4.4.2.2	States at the group controlling SwMI .....	18
	4.4.2.3	States for SS-CLIR invocation and operation .....	18
	4.4.2.4	States at the served user SwMI .....	18
	4.4.2.5	States for SS-CLIR invocation and operation .....	18
4.5	SS-CLIP and SS-CLIR signalling procedures .....		19
	4.5.1	SS-CLIP signalling procedures.....	19
	4.5.1.1	Actions at the Originating SwMI for SS-CLIP .....	19
		4.5.1.1.1 Normal procedures.....	19
		4.5.1.1.2 Exceptional procedures.....	19
	4.5.1.2	Actions at the Terminating for SS-CLIP .....	19
	4.5.1.3	Normal procedures .....	19
	4.5.1.4	Actions at the Group Controlling SwMI .....	20
	4.5.1.5	Actions at the Participating SwMI.....	20
	4.5.1.6	Exceptional Procedures .....	20
	4.5.2	SS-CLIR signalling procedures.....	20
	4.5.2.1	Actions at the originating SwMI for SS-CLIR .....	20
		4.5.2.1.1 Normal procedures.....	20
		4.5.2.1.2 Exceptional procedures.....	20
	4.5.2.2	Actions at the terminating SwMI.....	20
	4.5.2.3	Exceptional procedures .....	21
	4.5.3	SS-CLIP and SS-CLIR Impact of interworking. ....	21
	4.5.3.1	SS-CLIP .....	21
	4.5.3.2	SS-CLIR .....	22
4.6	Protocol interactions between SS-CLIP and SS-CLIR and other supplementary services and ANFs .....		23
	4.6.1	Interaction of SS-CLIR with SS-CLIP .....	23
	4.6.2	Talking party identification .....	23
	4.6.2.1	With SS-CLIP.....	23
	4.6.2.2	With SS-CLIR.....	23
	4.6.3	Interactions with ISI Mobility Management (ANF-ISIMM) of SS-CLIP .....	23
	4.6.3.1	SS-CLIP profiles.....	24
		4.6.3.1.1 SS-CLIP information .....	24
		4.6.3.1.2 SS-CLIP migration original profile .....	24
	4.6.3.2	SS-CLIP migration original profile response information element .....	24
	4.6.3.3	Operation of Interaction with ISI MM of SS-CLIP .....	25
	4.6.4	Interactions of SS-CLIR with ISI Mobility Management (ANF-ISIMM) .....	25
	4.6.4.1	SS-CLIR Profiles .....	25
		4.6.4.1.1 SS-CLIR information .....	25
		4.6.4.1.2 SS-CLIR migration original profile.....	25
	4.6.4.2	SS-CLIR migration original profile response information element .....	26
	4.6.4.3	Operation of Interaction of SS-CLIR with ISI MM .....	26
4.7	SS-CLIP and SS-CLIR parameter values (timers).....		26
5	Signalling protocol for the support of SS-COLP and SS-COLR .....		26
	5.1	SS-COLP and SS-COLR description .....	26
	5.1.1	SS-COLP description.....	27
		5.1.1.1 General .....	27
		5.1.1.2 SS-COLP services offered over the TNSSSAP .....	27
		5.1.1.3 INFORM4 indication.....	27
	5.1.2	Parameter description.....	27
	5.1.3	SS-COLR description .....	28
		5.1.3.1 General .....	28
		5.1.3.2 SS-COLR services offered over the TNSSSAP .....	28
		5.1.3.2.1 INVOCATION request.....	29
		5.1.3.2.2 INFORM5 indication.....	29
		5.1.3.2.3 INFORM6 indication.....	29
	5.1.4	Parameter description.....	29
	5.2	SS-COLP and SS-COLR operational requirements.....	30
	5.2.1	SS-COLP operational requirements .....	30
		5.2.1.1 Served user MS/LS .....	30

	5.2.1.2	Originating SwMI .....	30
	5.2.1.3	Terminating SwMI.....	30
5.2.2		SS-COLR operational requirements.....	31
	5.2.2.1	Served user MS/LS.....	31
	5.2.2.2	Originating SwMI .....	31
	5.2.2.3	Terminating SwMI.....	31
5.3		SS-COLP and SS-COLR coding requirements .....	31
	5.3.1	Operations.....	31
	5.3.2	SS-COLP coding requirements .....	31
	5.3.2.1	SS-COLP PDU .....	31
		5.3.2.1.1 EXTERNAL NUMBER PDU.....	31
		5.3.2.1.2 INFORM4 PDU .....	31
	5.3.2.2	TETRA PDU information element coding.....	32
		5.3.2.2.1 Connected Line Identification Information Elements.....	32
		5.3.2.2.2 Numbering plan identifier information element .....	32
		5.3.2.2.3 Screening Indicator information element .....	32
		5.3.2.2.4 SS-COLP PDU Type.....	32
		5.3.2.2.5 Type of Number information element ...	32
	5.3.2.3	Operations .....	33
5.3.3		SS-COLR coding requirements.....	33
	5.3.3.1	SS-COLR PDUs .....	33
		5.3.3.1.1 INVOCATION .....	33
		5.3.3.1.2 INFORM5 PDU .....	33
		5.3.3.1.3 INFORM6 PDU .....	34
		5.3.3.1.4 TETRA PDU information element coding .....	34
		5.3.3.1.5 Connected User Identification Information Elements.....	34
		5.3.3.1.6 SS-COLR PDU Type .....	35
		5.3.3.1.7 SS-COLR requested by connected user information element .....	35
		5.3.3.1.8 SS-COLR invoked for connected user information element .....	35
		5.3.3.1.9 SS-COLR override by calling user information element .....	35
		5.3.3.1.10 SS-COLR override invoked .....	36
		5.3.3.1.11 Screening Indicator Air Interface information element .....	36
	5.3.3.2	Operations .....	36
5.4		SS-COLP and SS-COLR state definitions .....	36
5.5		SS-COLP and SS-COLR signalling procedures .....	37
	5.5.1	SS-COLP .....	37
		5.5.1.1 Actions at the originating SwMI for SS-COLP .....	37
		5.5.1.1.1 Normal procedures .....	37
		5.5.1.1.2 Exceptional procedures .....	37
		5.5.1.2 Actions at the group controlling SwMI .....	37
		5.5.1.3 Actions at the terminating SwMI for SS-COLP .....	37
		5.5.1.3.1 Normal procedures .....	37
		5.5.1.3.2 Exceptional procedures .....	38
5.5.2		SS-COLR .....	38
		5.5.2.1 Actions at the served / connected user for SS-COLR .....	38
		5.5.2.2 Actions at the originating SwMI for SS-COLR .....	38
		5.5.2.3 Actions at the group controlling SwMI for SS-COLR .....	38
		5.5.2.4 Actions at the terminating SwMI for SS-COLR.....	38
		5.5.2.4.1 Normal procedures .....	38
		5.5.2.4.2 Exceptional procedures .....	39
5.5.3		SS-COLP and SS-COLR impact of interworking. ....	39
		5.5.3.1 SS-COLP .....	39
		5.5.3.2 SS-COLR.....	39

5.6	Protocol interactions between SS-COLP and SS-COLR and other supplementary services and ANFs .....	40
5.6.1	Interaction of SS-COLP with SS-COLR .....	40
5.6.2	Talking party identification .....	40
5.6.2.1	With SS-COLP .....	40
5.6.2.2	With SS-COLR .....	41
5.6.3	Call forward unconditional .....	41
5.6.3.1	With SS-COLP .....	41
5.6.3.2	With SS-COLR .....	41
5.6.4	Call authorized by dispatcher .....	42
5.6.5	Discreet listening .....	42
5.6.6	Ambience listening .....	42
5.6.7	Interactions with ISI Mobility Management (ANF-ISIMM) of SS-COLP and SS-COLR .....	42
5.6.7.1	SS-COLP Profiles .....	42
5.6.7.1.1	SS-COLP information .....	42
5.6.7.1.2	SS-COLP migration original profile .....	43
5.6.7.1.3	SS-COLP migration original profile response information element .....	43
5.6.8	Operations of SS-COLP with ISI Mobility Management (ANF-ISIMM) .....	43
5.6.8.1	SS-COLR profiles .....	44
5.6.8.1.1	SS-COLR information .....	44
5.6.8.1.2	SS-COLR migration original profile .....	44
5.6.8.1.3	SS-COLR migration original profile response information element .....	44
5.6.8.2	Operations of SS-COLR with ISI Mobility Management (ANF-ISIMM) .....	44
5.7	SS-COLP and SS-COLR parameter values (timers) .....	45
Annex A (normative): Required changes to TETRA ETSS in support of Call Identification Supplementary Services .....		46
A.1	Changes to ETS 300 392-2 Air Interface .....	46
A.1.1	Modified U-SETUP PDU .....	46
A.2	Changes to ETS 300 392-9 Supplementary Services .....	47
A.2.1	Notification indicator information element .....	47
A.3	Changes to ETS 300 392-3-2 ISI Individual Call .....	47
A.3.1	EXTERNAL NUMBER PDU in support of SS-CLIP .....	47
A.3.2	Numbering Plan Identifier information element .....	48
A.3.2.1	Type of Number information element .....	48
A.3.2.2	Screening Indicators information element .....	48
A.3.3	EXTERNAL NUMBER PDU in support of SS-COLP .....	49
A.4	Changes to ETS 300 392-3-3 ISI Group Call .....	49
Annex B (informative): Specification and Description Language (SDL) representation of procedures ..		50
B.1	SDL representation of SS-CLIP at the terminating SwMI .....	50
B.2	SDL representation of SS-CLIR procedure .....	51
B.3	SDL representation of SS-CLIR at the originating SwMI .....	52
B.4	SDL representation of SS-COLP at the originating SwMI .....	53
B.5	SDL representation of SS-COLR procedure .....	54
B.6	SDL representation of SS-COLR process at the originating SwMI .....	55
History .....		56

## Foreword

This draft European Telecommunication Standard (ETS) has been produced by the Terrestrial Trunked Radio (TETRA) Project of the European Telecommunications Standards Institute (ETSI), and is now submitted for the Public Enquiry phase of the ETSI standards approval procedure.

The present document is a multi-part ETS and will consist of the following parts:

- Part 1: "General network design";
- Part 2: "Air Interface (AI)";
- Part 3: "Inter-working";
- Part 4: "Gateways basic operations";
- Part 5: "Terminal equipment interface";
- Part 6: "Line connected stations";
- Part 7: "Security";
- Part 9: "General supplementary services design";
- Part 10: "Supplementary services stage 1";
- Part 11: "Supplementary services stage 2";
- Part 12: "Supplementary services stage 3";**
- Part 13: "SDL Model of the Air Interface (AI)";
- Part 14: "Protocol Implementation Conformance Statement (PICS) proforma specification".

<b>Proposed transposition dates</b>	
Date of latest announcement of this ETS (doa):	3 months after ETSI publication
Date of latest publication of new National Standard or endorsement of this ETS (dop/e):	6 months after doa
Date of withdrawal of any conflicting National Standard (dow):	6 months after doa

Blank page



## 1 Scope

The present document specifies the stage 3 description of the Supplementary Services CLIP, CLIR and COLP all part of Call Identification for the Terrestrial Trunked RAdio (TETRA). The term "Line" is used in this ETS to design either the line of a "LS" Line Station or by extension the TETRA Air Interface.

NOTE 1: In order to use the same name for supplementary services as ECMA.

Calling Line Identification Presentation (SS-CLIP) is a supplementary service which is offered to the called user and which provides the calling user identity.

Connected Line Identification Presentation (SS-COLP) is a supplementary service which is offered to the calling user and which provides the connected user identity.

Calling / connected Line Identification Restriction (SS-CLIR) is a supplementary service offered to a user to restrict presentation of that user's identity to another user.

Man-Machine Interface and charging principles are outside the scope of this ETS.

The supplementary service stage 3 description is preceded by the stage 1 and the stage 2 description of the service, according to the method described in CCITT Recommendation I.130 [1]. The stage 1 description specifies the service from the user's point of view. The stage 2 description identifies the functional capabilities of each SS and the information flows needed to support the supplementary service as specified in its stage 1 description. The present stage 3 description specifies the protocols at the air interface and at the various Inter-System Interfaces (ISI) to support each Supplementary Service.

NOTE 2: According to CCITT Recommendation I.130 [1], the stage 3 description of any telecommunication service addresses the network implementation aspects. Consequently it comprises two steps: the specifications of all protocols at the various reference points involved in any of the service procedures (notably the service operation) are the first step of the stage 3 description, and the specifications of the functions of the corresponding network entities are its second step. The latter have not been provided since they can be derived from the specification of the functional entity actions in the stage 2 description.

This ETS is applicable to Voice plus Data individual call or group call; this ETS is neither applicable to Packet Mode of Operation nor to DMO; more specifically to the following entities:

- the MS/LS of either the calling user or the connected user during an individual call or a group call;
- the originating Switching and Management Infrastructure (SwMI) in an individual call or a group call;
- the group controlling SwMI and the participating SwMI for a group call;
- the terminating SwMI in an individual call;
- the interworking SwMI for either an individual call or a group call.

## 2 Normative references

This ETS incorporates by dated and undated reference, provisions from other publications. These normative references are cited at the appropriate places in the text and the publications are listed hereafter. For dated references, subsequent amendments to or revisions of any of these publications apply to this ETS only when incorporated in it by amendment or revision. For undated references the latest edition of the publication referred to applies.

- [1] CCITT Recommendation I.130 (1988): "Method for the characterization of telecommunication services supported by an ISDN and network capabilities of an ISDN".
- [2] ETS 300 171 (1992): "Private Telecommunication Networks (PTN) Specification; Specification, functional models and information flows; Control aspects of circuit mode basic services; ECMA-BCSD".
- [3] ETS 300 392-1 (1996): "Terrestrial Trunked Radio (TETRA); Voice plus Data (V+D); Part 1: General network design".
- [4] ETS 300 392-2 (1996): "Terrestrial Trunked Radio (TETRA); Voice plus Data (V+D); Part 2: Air Interface (AI)".
- [5] ETS 300 392-3 (1998): "Terrestrial Trunked Radio (TETRA); Voice plus Data (V+D); Part 3: Interworking at the Inter-System Interface (ISI); Sub-part 1: General design".
- [6] ETS 300 392-9 (1998): "Terrestrial Trunked Radio (TETRA); Voice plus Data (V+D); Part 9: General requirements for supplementary services".
- [7] ETS 300 392-10-1 (1996): "Terrestrial Trunked Radio (TETRA); Voice plus Data (V+D); Part 10: Supplementary services stage 1; Sub-part 1: Call identification".
- [8] ETS 300 392-11-1: "Terrestrial Trunked Radio (TETRA); Voice plus Data (V+D); Part 11: Supplementary services stage 2; Sub-part 1: Call Identification (CI)".
- [9] Standard ECMA-148 (June 1997): "Private Integrated Services Network (PISN) - Specification, Functional Model and Information Flows- Identification Supplementary Services".
- [10] ITU-T Recommendation Z.100: "Specification and Description Language (SDL)".
- [11] ITU-T Recommendation E.164: "Telephone network and ISDN; Operation, numbering, routing, and mobile service; Numbering plan for the ISDN era".
- [12] ITU-T Recommendation E.212: "Identification plan for land mobile stations".
- [13] ITU-T Recommendation X.121: "International numbering plan for public data networks".
- [14] ETS 300 392-3-2 (1998): "Terrestrial Trunked Radio (TETRA); Voice plus Data (V+D); Part 3: Interworking at the Inter-System Interface (ISI); Sub-part 2: Additional Network Functions Individual Call (ANF-ISIIC)".
- [15] ETS 300 392-3-3: "Terrestrial Trunked Radio (TETRA); Voice plus Data (V+D); Part 3: Interworking at the Inter-System Interface (ISI); Sub-part 3: Additional Network Functions Group Call (ANF-ISIGC)".
- [16] ETS 300 392-3-5 (1998): "Terrestrial Trunked Radio (TETRA); Voice plus Data (V+D); Part 3: Interworking at the Inter-System Interface (ISI); Sub-part 5: Additional Network Functions Mobility Management (ANF-ISIMM)".

- [17] ETS 300 392-10-3: "Terrestrial Trunked Radio (TETRA); Voice plus Data (V+D); Part 10: Supplementary services stage 1; Sub-part 3: Talking party identification".

### 3 Definitions, symbols and abbreviations

#### 3.1 Definitions

For the purposes of this ETS, the following definitions apply:

**Affected User:** The affected user in the case of SS-CLIP is the calling user (even in a group); the affected user in the case of SS-COLP is the connected user; the affected user in the case of SS-CLIR is the connected user; the affected user in the case of SS-COLR is the calling user.

**Calling user identity:** The identity of the calling user as defined in ETS 300 392-1 [3] subclause 7.2 where ITSI and SSI are defined. When the connected user and the calling user belongs to the same home SwMI, and according to subclause 8.4.1 of ETS 300 392-9 [6], this identity may be given using only the SSI part of the ITSI. In all other cases, the identity will be the full ITSI. In the case of a group call, the calling user identity shall be the individual ITSI setting up the group call.

**Connected user:** The user that answers a call. (different from ECMA-148 [9] and may be different from called user).

**Connected user identity:** The identity of the connected user for identification purposes as defined in ETS 300 392-1 [3] subclause 7.2 where ITSI and SSI are defined. When the connected user and the calling user belongs to the same home SwMI, and according to subclause 8.4.1 of ETS 300 392-9 [6], this identity may be given using only the SSI part of the ITSI. In all other cases, the identity will be the full ITSI. In the case of a group call, the connected user identity is defined as the GTSI.

**Served user:** The served user in the case of SS-CLIP is the connected user; the served user in the case of SS-COLP is the calling user; in the ECMA terminology, SS-CLIR includes the SS-CLIR restriction of SS-CLIP and the SS-COLR restriction of SS-COLP; in this ETS SS-CLIR and SS-COLR will be used preferably to a generic SS-CLIR term; thus in the case of SS-CLIR as applicable to this ETS, the served user shall be the calling user and in the case of SS-COLR, the served user shall be the connected user.

#### 3.2 Symbols

For the purposes of this ETS, no specific symbols apply beside the symbols found in ITU-T Recommendation Z.100 [10] relating to SDL.

#### 3.3 Abbreviations

For the purposes of this ETS the following general abbreviations apply:

CC	Basic service call control functional entity
CCA	Basic service call control functional entity agent

NOTE 1: CC and CCA are applied as defined in ETS 300 171 [2]

ANF-ISIGC	Additional Network Feature - Inter-System Interface Group Call
ANF-ISIIC	Additional Network Feature - Inter-System Interface Individual Call
ANF-ISIMM	Additional Network Feature - Inter-System Interface Mobility Management
CGLI	CallinG Line Identification (ECMA)
CLIP	Calling Line Identification Presentation
CLIR	Calling Line Identification Restriction
COLI	COnnected Line Identification
COLP	COnnected Line Presentation
COLR	COnnected Line Restriction
GTSI	Group TETRA Subscriber Identity
ISI	Inter System Interface
ITSI	Individual TETRA Subscriber Identity
LS	Line Station

MS	Mobile Station
PDU	Protocol Data Unit
SDL	(Functional) Specification and Description Language
SS	Supplementary Service

NOTE 2: The abbreviation SS is only used when referring to a specific supplementary service.

SSI	Short Subscriber Identity
SwMI	Switching and Management Infrastructure

## 4 Signalling protocol for the support of SS-CLIP and SS-CLIR

### 4.1 SS-CLIP and SS-CLIR description

#### 4.1.1 SS-CLIP service description

##### 4.1.1.1 General

SS-CLIP is a supplementary service offered to the connected user; it provides the calling user's identity (without any calling user's sub address information in the case of TETRA call) to the connected user. The information presented to the connected user shall consist of the identity of the calling user in a form sufficient to return the call (SSI, ITSI for TETRA call; National, International number for interworking call).

This clause describes SS-CLIP specific services offered by the Circuit Mode Control Entity (CMCE) at the Supplementary Services service access point (TNSS-SAP) of the TETRA voice plus data layer 3 service boundary in a TETRA Mobile Station (MS) or TETRA Line Station (LS). The SS-CLIP service access point is used in conformance testing as a normative boundary in MSs and LSs.

NOTE: All the service primitives have been shown without a TNSS-CLIP-prefix.

##### 4.1.1.2 SS-CLIP services offered over the TNSSAP

NOTE: As man-machine interface or user applications are outside the scope of the present document service primitives are used to define information exchange to and from the standardized part of the MS/LS. Those primitives may be only indirectly accessible.

The SS-CLIP service primitives at the served user MS/LS TNSS-SAP shall be:

- INFORM1 indication.

##### 4.1.1.3 INFORM1 indication

The INFORM1 indication primitive shall be sent to the connected user application by the MS/LS CMCE over TNSS-SAP as a result of SS-CLIP operation. The INFORM1 indication primitive shall contain the SS-CLIP parameters listed in table 1. Normal use of SS-CLIP INFORM1 will be with SS-CLIR not invoked, Override not implemented or not invoked.

**Table 1: Parameters for the primitive INFORM1 indication**

Parameter	Indication
SS-CLIR invoked for calling user	M
CallinG Line Identity (CGLI)	C (note 1)
SS-CLIR overridden by connected user	O (note 2)
NOTE 1: Conditional on SS-CLIR not having been invoked for calling user.	
NOTE 2: When override is implemented, INFORM1 may be presented with the indication that the identity of the calling user is provided due to override.	

#### 4.1.2 Parameter description

SS-CLIR invoked for calling user:

- 00 not implemented or default mode;
- 10 no restriction;
- 11 restriction.

SS-CLIR overridden by connected user:

- 1 overridden;
- 0 not overridden.

Calling Line Identity:

- Short Subscriber Identity (SSI);
- Short Subscriber Identity (SSI) + Address extension;
- Gateway identity;  
External subscriber number.

NOTE: The numbering plan, the type of number and the screening indicator are available to the connected user SwMI, not to the connected user application.

#### 4.1.3 SS-CLIR description

##### 4.1.3.1 General

SS-CLIR is a supplementary service offered to the calling user. It restricts presentation of the calling user's identity to the connected user. When SS-CLIR has been invoked for a call, the originating SwMI shall provide the destination SwMI with the indication that the calling user's identity is not allowed to be presented to the connected user (exception for the case of override). In this case no calling user identity shall be included in the SET-UP PDU sent to the connected user.

Whether or not SS-CLIR has been invoked for that call, the calling user identity within SwMIs or over the ISI as part of the basic (individual or group) call procedures.

This clause describes SS-CLIR specific services offered by the Circuit Mode Control Entity (CMCE) at the Supplementary Services service access point (TNSS-SAP) of the TETRA voice plus data layer 3 service boundary in a TETRA Mobile Station (MS) or TETRA Line Station (LS). The SS-CLIR service access point is used in conformance testing as a normative boundary in MSs and LSs.

NOTE: All the service primitives have been shown without a TNSS-CLIR-prefix.

##### 4.1.3.2 SS-CLIR services offered over the TNSSSAP

NOTE: As man-machine interface or user applications are outside the scope of the present document service primitives are used to define information exchange to and from the standardized part of the MS/LS. Those primitives may be only indirectly accessible.

The SS-CLIR service primitives at the served user MS/LS TNSS-SAP shall be:

- INVOCATION request;
- INFORM2 indication (SS-CLIR overridden);
- INFORM3 indication (SS-CLIR overridden).

**4.1.3.2.1 INVOCATION request**

The INVOCATION request primitive shall be sent by the calling user application to the MS/LS CMCE over TNSS-SAP to invoke SS-CLIR in the case where SS-CLIR is provided with a temporary mode provision (non permanent). The INVOCATION request primitive shall contain the SS-CLIR parameters listed in table 2.

**Table 2: Parameters for the primitive INVOCATION request**

Parameter	Request
SS-CLIR invocation by calling user	M

**4.1.3.2.2 INFORM2 indication**

The INFORM2 indication primitive shall be sent to the calling user application by the MS/LS CMCE over TNSS-SAP as a result of SS-CLIR operation. The INFORM2 indication primitive shall contain the SS-CLIR parameters listed in table 3. This INFORM2 indication is presented only in the case has taken place for the call.

**Table 3: Parameters for the primitive INFORM2 indication**

Parameter	Indication
SS-CLIR invoked by calling user	M
Call reference (identifier)	M
SS-CLIR Overridden by Connected User	M

**4.1.3.2.3 INFORM3 indication**

The INFORM3 indication primitive may be sent to the connected user application by the MS/LS CMCE over TNSS-SAP as a result of SS-CLIR operation to indicate that presentation of CGLI is due to override. In the case where this primitive is implemented, the INFORM3 indication primitive shall contain the SS-CLIR parameters listed in table 1 (identical to SS-CLIP when CGLI presentation result from an override of SS-CLIR).

NOTE 1: This primitive exists only if SS-CLIP has been invoked.

NOTE 2: In the case where override is not implemented, there will be one INFORM1 primitive for SS-CLIP, one INFORM2 primitive for SS-CLIR and no INFORM3 primitive.

**4.1.4 Parameter description**

SS-CLIR invocation by calling user:

- 00 SS-CLIR not implemented or invoked according to default mode;
- 10 no restriction;
- 11 restriction.

SS-CLIR overridden by connected user:

- 1 overridden;
- 0 not overridden;  
 Calling Line Identity.
- Short Subscriber Identity (SSI);
- Short Subscriber Identity (SSI) + Address extension;
- Gateway identity;

- External subscriber number.

NOTE: The numbering plan, the type of number and the screening indicator are available to the connected user SwMI, not to the connected user application.

## **4.2 SS-CLIP and SS-CLIR operational requirements**

### **4.2.1 SS-CLIP operational requirements**

#### **4.2.1.1 Served user MS/LS**

The served user MS/LS shall comply with the requirements in clause 14 of ETS 300 392-2 [4] which apply to the tele- and bearer services which it supports for incoming calls.

#### **4.2.1.2 Originating SwMI**

In case of an individual call over the ISI, the originating SwMI shall support the requirements set in ETS 300 392-3-2 [14] for establishing an outgoing call.

In case of a group call over the ISI, the originating SwMI shall support the requirements set in ETS 300 392-3-3 [15] for establishing an outgoing call.

#### **4.2.1.3 Group controlling SwMI**

If the served user MS/LS is registered in the group controlling SwMI, that SwMI shall support this MS/LS complying with the requirements for participating in a group call set in clause 14 of ETS 300 392-2 [4].

If the served user MS/LSs is not registered in the group controlling SwMI, that SwMI shall comply with the ISI requirements necessary to establish group calls, set in ETS 300 392-3-3 [15].

#### **4.2.1.4 Terminating SwMI**

The terminating SwMI is also the served user SwMI. That SwMI shall support the served user MS/LS complying with the requirements for individual calls set in clause 14 of ETS 300 392-2 [14].

It shall also support the served user MS/LS complying with the requirements for group call set in ETS 300 392-3-3 [15] if it is different from the group controlling SwMI.

### **4.2.2 SS-CLIR operational requirements**

#### **4.2.2.1 Served user MS/LS**

The served user MS/LS shall comply with the requirements in clause 14 of ETS 300 392-2 [4] which apply to the tele- and bearer services which it supports. In addition it shall comply with the relevant call related requirements in clauses 7 and 11 of ETS 300 392-9 [6] restricted to outgoing calls.

#### **4.2.2.2 Originating SwMI**

The originating SwMI is also the served user SwMI. That SwMI shall support the served user MS/LS complying with the requirements for individual or group calls in clause 14 of ETS 300 392-2 [4]. If the call is over ISI, the served user SwMI/originating SwMI shall also comply with the corresponding requirements for establishing outgoing calls set in ETS 300 392-3-2 [14] for individual calls and in ETS 300 392-3-3 [15] for group calls. It shall also comply with the relevant call related requirements in clauses 9 to 11 of ETS 300 392-9 [6] for outgoing calls.

#### **4.2.2.3 Group controlling SwMI**

The group controlling SwMI shall support the group call set-up by complying with the group call requirements contained in clause 14 of ETS 300 392-2 [4].

In the case where the group controlling SwMI is different from the terminating SwMI, it shall also comply with the requirements contained in group calls over ISI ETS 300 392-3-3 [15].

#### 4.2.2.4 Terminating SwMI

For an individual call, that SwMI shall support the possibility for the connected user MS/LS to participate in the call as defined in ETS 300 392-2 [4] for individual calls. That SwMI shall also comply with the relevant call related requirements in clauses 7 to 11 of ETS 300 392-9 [6].

The same shall apply for group calls if that SwMI is different from the group controlling SwMI.

If the call is over the ISI, the connected user SwMI shall comply with the corresponding ISI requirements, set in ETS 300 392-3-2 [14] for individual calls and in ETS 300 392-3-3 [15] for group calls. It shall also comply with the relevant call related requirements in clauses 9 to 11 of ETS 300 392-9 [6] for outgoing calls.

### 4.3 SS-CLIP and SS-CLIR coding requirements

The purpose of the calling user identity information element is to identify the origin of a call. In the case of a group call, the calling user identity information shall be the identity of the user originating the group call.

ETS 300 392-1 [3] subclause 7.2 gives the coding for the calling user identity which is required to support this service.

#### 4.3.1 Operations

#### 4.3.2 SS-CLIP and SS-CLIR PDUs

##### 4.3.2.1 Modified U-SETUP PDU

NOTE: See clause A.1.

##### 4.3.2.2 EXTERNAL NUMBER PDU

NOTE: See clause A.2.

#### 4.3.3 TETRA PDU information element coding for SS-CLIP and SS-CLIR.

##### 4.3.3.1 U-SETUP CLIR (RESTRICT)

The U-SETUP CLIR (RESTRICT) information element shall be as specified in table 4.

**Table 4: U-SETUP CLIR (RESTRICT) information element content**

<b>CLIR (RESTRICT) bits</b>	<b>Usage</b>
00 <sub>2</sub>	Not implemented or use default mode
01 <sub>2</sub>	Reserved
10 <sub>2</sub>	SS-CLIR invoked; no restriction for that call
11 <sub>2</sub>	SS-CLIR invoked; Presentation restricted

##### 4.3.3.2 Notification indicator information element

NOTE: See clause A.2.

##### 4.3.3.3 Numbering Plan Identifier

NOTE: See clause A.3.



**4.3.3.4 Type of Number**

NOTE: See clause A.3.

**4.3.3.5 Screening Indicator**

NOTE: See clause A.3.

**4.3.3.6 SS-CLIR PDU Type**

SS-CLIR-PDU type indicates the type of the SS-CLIR PDU as defined in table 5.

**Table 5: SS-CLIR PDU type information element contents**

Information element	Length	Value	Remark
	5	0000 <sub>2</sub>	Refer ETS 300 392-9 [6]
		0001 <sub>2</sub>	Refer ETS 300 392-9 [6]
EXTERNAL NUMBER		0010 <sub>2</sub>	See clause A.3
Reserved		0011 <sub>2</sub>	INFORM1; note
Reserved		00100 <sub>2</sub>	INFORM2; note
Reserved		00101 <sub>2</sub>	INFORM3; note
NOTE: Those values are reserved in the case the CLIR bits and the notification values cannot be changed.			

**4.3.4 Messages**

All the information for SS-CLIP is sent in the D-SETUP PDU using specific information elements or the notification indicator information element.

All the information for SS-CLIR is sent in the U-SETUP PDU using a specific information element and in the D-CONNECT PDU using the notification indicator information element.

**4.4 SS-CLIP and SS-CLIR state definitions**

**4.4.1 SS-CLIP state definitions**

**4.4.1.1 States at the served user MS/LS**

There are no SS-CLIP conceptual states within the served user MS/LS in association with a particular individual call or group call.

NOTE: The SS-CLIP information sent to the served user MS/LS is simply for information, no specific SS-CLIP action being defined for this MS/LS as a result of the reception of this information.

**4.4.1.2 States at the group controlling SwMI**

**4.4.1.3 States for SS-CLIP invocation and operation**

The procedures for the group controlling SwMI for invocation and operation of SS-CLIP are written in terms of the conceptual states defined below existing within the SS-CLIP control application in that SwMI in association with a particular group call.

The definition of the SS-CLIP invocation states for the group controlling SwMI (in association with a particular group call) is derived from the following SS-CLIP group controlling basic state:

- SS-CLIP-Idle  
(assume activation at subscription)

SS-CLIP is invoked with no option as soon as call set up is presented.

**4.4.1.4 States at the served user SwMI**

**4.4.1.5 States for SS-CLIP invocation and operation**

The invocation and operation procedures for the served user SwMI are written in terms of the following conceptual states existing within the SS-TPI control application in that SwMI in association with a particular individual call.

NOTE: There are no activation, deactivation, definition or interrogation procedures defined for the served user SwMI.

- SS-CLIP-Idle  
(activated at subscription)

SS-CLIP is invoked with no option as soon as call set up is presented.

**4.4.2 SS-CLIR state definitions**

**4.4.2.1 States at the served user MS/LS**

There are no SS-CLIR conceptual states within the served user MS/LS in association with a particular individual call or group call.

NOTE: The SS-CLIR invocation request is sent on a call per call basis and does not result in a state change of the SS-CLIR process. The eventual information "OVERRIDDEN" provided to the served user MS/LS is simply for information, no specific SS-CLIR action being defined for this MS/LS as a result of the reception of this information.

**4.4.2.2 States at the group controlling SwMI**

**4.4.2.3 States for SS-CLIR invocation and operation**

The procedures for the group controlling SwMI for invocation and operation of SS-CLIR are written in terms of the conceptual states defined below existing within the SS-CLIR control application in that SwMI in association with a particular group call.

The definition of the SS-CLIR invocation states for the group controlling SwMI (in association with a particular group call) is derived from the following SS-CLIR group controlling basic state:

- SS-CLIR-Idle  
(assume activation at subscription)

SS-CLIR is either invoked with no option as soon as call set up is presented due to permanent mode or is invoked on a call per call basis.

**4.4.2.4 States at the served user SwMI**

**4.4.2.5 States for SS-CLIR invocation and operation**

The invocation and operation procedures for the served user SwMI are written in terms of the following conceptual states existing within the SS-TPI control application in that SwMI in association with a particular individual call.

NOTE: There are no activation, deactivation, definition or interrogation procedures defined for the served user SwMI.

- SS-CLIR-Idle  
(activated at provision)

SS-CLIR is either invoked with no option as soon as call set up is presented due to permanent mode or is invoked on a call per call basis.

## **4.5 SS-CLIP and SS-CLIR signalling procedures**

### **4.5.1 SS-CLIP signalling procedures**

Examples of message sequences are shown in stage 2 ETS 300 392-11-1 [8].

#### **4.5.1.1 Actions at the Originating SwMI for SS-CLIP**

The originating SwMI may either be the TETRA calling user SwMI or the Gateway SwMI.

##### **4.5.1.1.1 Normal procedures**

All information pertaining to the CLIP supplementary service shall be inserted in the SETUP message sent as part of the basic individual or group call set-up according to ETS 300 392-2 [4], clause 14. This applies regardless of whether SS-CLIR is invoked or not.

The calling line identity shall always be the identity associated with the access (in which the call was generated) in the originating SwMI; the identity shall not be provided by the user in the case of TETRA but by the originating SwMI.

If the SETUP message contains a wrong calling identity information element, the originating SwMI shall screen the identity and rejects the U-SETUP call set-up.

The presentation RESTRICT indicator also called RESTRICT indicator, as determined by the SS-CLIR procedure described below shall be forwarded to the terminating SwMI in association with the basic call request.

##### **4.5.1.1.2 Exceptional procedures**

Not applicable.

#### **4.5.1.2 Actions at the Terminating for SS-CLIP**

The SDL representation of procedures at the Terminating SwMI is shown in figure B.1.

In all what follows the terminating SwMI may mean the group controlling SwMI in case of a group call.

##### **4.5.1.3 Normal procedures**

The terminating SwMI may either be the connected user SwMI or the gateway SwMI in which case it is terminating from a TETRA network point of view; the later will be described in the interworking considerations.

The terminating SwMI shall check if SS-CLIP has been activated for the called user. If yes and presentation is allowed according to the presentation RESTRICT indicator supplied together with the calling identity, the terminating SwMI shall include the calling user identity information element in the D-SETUP PDU sent to the called user. In case of an intra-TETRA call, the presentation RESTRICT indicator is part of the basic call ANF-ISIIC SETUP PDU and is carried as the bit CLIR.

If presentation is not allowed according to the presentation RESTRICT indicator supplied together with the calling number, the terminating SwMI shall present to the called user the notification indicator corresponding to:

- presentation RESTRICT indicator set to "presentation restricted".

If the called user is not provided with the CLIP supplementary service, then the calling user identity shall not be included in the SETUP message sent to the called user.

If presentation is restricted but the connected user has the override privilege indicated in the terminating SwMI, if the call is an individual call and not a group call and if the calling identity is available, the terminating SwMI shall include the calling user identity information element in the D-SETUP PDU sent to the called user.

#### **4.5.1.4 Actions at the Group Controlling SwMI**

Shall be identical to the actions described for the terminating SwMI.

#### **4.5.1.5 Actions at the Participating SwMI**

Shall be identical to the actions described for the terminating SwMI.

#### **4.5.1.6 Exceptional Procedures**

Not applicable.

### **4.5.2 SS-CLIR signalling procedures**

#### **4.5.2.1 Actions at the originating SwMI for SS-CLIR**

The originating SwMI may either be the TETRA calling user SwMI or the Gateway SwMI. In all what follows, the originating SwMI may mean the group controlling SwMI in case of group call if the calling user is registered in the group home SwMI. It is assumed that all group members have no override capability.

NOTE: A procedure where each group member would have a different override is not possible with the present group call set-up.

##### **4.5.2.1.1 Normal procedures**

If the calling user has subscribed to the SS-CLIR permanent mode, then the originating SwMI shall ignore the presentation RESTRICT indicator received in the SETUP message. The originating SwMI shall set the presentation RESTRICT indicator to "presentation restricted". All information pertaining to the CLIR supplementary service including the calling line identity shall be inserted in the ANF-ISIIC SETUP PDU sent as part of the basic individual call set-up.

If the SS-CLIR is requested by the calling user on a per-call basis, and the presentation RESTRICT indicator is included in the U-SETUP message, the originating SwMI shall set in the ISI SETUP message the presentation RESTRICT indicator according to that in the received calling user SETUP.

If the SS-CLIR is requested by the user on a per-call basis, and no presentation RESTRICT indicator is included in the U-SETUP message, then the originating SwMI shall set the presentation RESTRICT indicator to the subscribed default value.

The presentation RESTRICT indicator shall be forwarded to the terminating SwMI in association with the basic call request.

In the case where override privilege has been exercised by the connected user, the originating SwMI shall inform the calling user that SS-CLIR has been overridden.

##### **4.5.2.1.2 Exceptional procedures**

Not applicable.

##### **4.5.2.2 Actions at the terminating SwMI**

The terminating SwMI may either be the called user SwMI or the gateway SwMI in which case it is terminating from a TETRA network point of view.

The SDL representation of SS-CLIR procedure is shown in figure B.2.

The SDL representation of procedures at the Terminating SwMI is shown in figure B.3.

If presentation of the CGLI is not allowed according to the presentation RESTRICT indicator supplied together with the calling identity due to the invocation of SS-CLIR, the terminating SwMI shall:

- not include the calling user identity in the D-SETUP;
- include in the notification to the called user that SS-CLIR has been invoked.

If SS-CLIP is not subscribed to and regardless of whether SS-CLIR is invoked for that call or not, the terminating SwMI shall:

- not include the calling user identity in the D-SETUP;
- not include any notification to the connected user that SS-CLIP has not been subscribed.

If presentation of the CGLI is restricted but the connected user has the override capability, the terminating SwMI shall:

- include the identity digits in the calling user identity message;
- generate an INFORM2 PDU to inform the calling user that its invocation for SS-CLIR has been overridden by the connected user and that its identity has been presented to the connected user.

NOTE: The terminating SwMI may also generate an INFORM3 PDU to inform the connected user that presentation of CGLI is due to override; the content of INFORM3 is identical to the content of INFORM1.

#### **4.5.2.3 Exceptional procedures**

Not applicable.

#### **4.5.3 SS-CLIP and SS-CLIR Impact of interworking.**

##### **4.5.3.1 SS-CLIP**

On calls incoming from non TETRA networks, the calling number may be delivered to the gateway SwMI without an indication of calling line identity restriction. In this case, the gateway SwMI shall present the calling identity information element as described below.

The presentation indicators associated with the calling identity in the case of interworking with non TETRA networks received at the originating SwMI shall be passed transparently to the terminating SwMI (called user SwMI) as part of the ISI SETUP. The screening indicator, the type of numbering and the numbering plan associated with the calling identity (External Subscriber Number) shall be carried over ISI to the served user SwMI, not to the end user.

The numbering plan identifier, to be indicated with the calling user identity information element, sent by the gateway SwMI to the terminating SwMI shall be either TETRA numbering plan, ITU-T Recommendations E.164 [11], X.121 [13], or unknown.

Where the external subscriber number included by the calling user SwMI is complete, the type of number to be sent by the gateway SwMI to the terminating SwMI shall be one of the following:

- Local;
- National number;
- International number;
- Unknown.

Where a partial calling user ID is included by the calling user network, the calling user identity information element shall be set to "unknown".

If neither the calling user identity nor an indication that the presentation is restricted is available at the terminating SwMI, the terminating SwMI shall:

- present to the called user screening indicator set to "number not available due to interworking";
- include the gateway identity digits field in the calling user information element;
- include a value 0 for the external subscriber number length (indicating external number not available).

For call originating outside TETRA, the value of the screening indicator set by the gateway SwMI shall be as provided by the interworking network in the case it is provided or set to network provided by the gateway SwMI in the case it is not provided by the interworking network.

In the case of interworking, for call originating outside of TETRA, where the calling user provides partial calling identity information even though the digit sequence is a valid one, the gateway SwMI shall either proceed with the call without indicating the calling identity and indicating " number not available due to interworking" or reject the call set up.

The presentation RESTRICT indicator, as determined by the SS-CLIR procedure received from the interworking network and described below shall be forwarded to the terminating SwMI in association with the basic call request.

The case where the terminating SwMI is requested by the interworking network to provide the calling user identity is outside the scope of this ETS.

NOTE: Conversion from the TETRA numbering plan to an external numbering plan would be needed.

#### **4.5.3.2 SS-CLIR**

On calls to non TETRA networks, it cannot be assured that a restriction indicator can be carried to the destination network. As an implementation option, the gateway TETRA SwMI may restrict any information identifying the calling user from being forwarded to the destination network when the SS-CLIR is applicable.

On calls incoming from non TETRA networks, the calling user number may be delivered to the SwMI gateway with an indication of calling line identity restriction. In this case, the originating SwMI which is also the gateway SwMI shall use the normal procedure of the SS-CLIR originating SwMI.

If presentation of the CGLI is not allowed according to the presentation RESTRICT indicator supplied together with the calling identity due to the invocation of SS-CLIR by the external network calling user, and if SS-CLIP has been subscribed to, the terminating SwMI shall:

- include the CGLI information element in the D-SETUP message;
- set the presentation RESTRICT indicator to presentation restricted in the notification indicator;
- not include the external subscriber number;
- include the gateway SwMI identity.

NOTE: The case of override in interworking is outside the scope of this ETS.

#### **4.6 Protocol interactions between SS-CLIP and SS-CLIR and other supplementary services and ANFs**

This subclause specifies protocol interactions with other supplementary services and ANFs for which stage 3 TETRA European Standards had been published at the time of publication of this ETS. For interactions with supplementary services and ANFs for which stage 3 ETSs are published subsequent to the publication of this ETS, see those other stage 3 ETSs.

NOTE 1: Additional interactions that have no impact on the signalling protocol neither at the air interface nor at the ISI can be found in the relevant stage 1 description standards.

NOTE 2: Simultaneous conveyance of APDUs for either SS-CLIP or SS-CLIR and another supplementary service or ANF in the same message, each in accordance with the requirements of its respective stage 3 International Standard, does not, on its own, constitute a protocol interaction.

##### **4.6.1 Interaction of SS-CLIR with SS-CLIP**

SS-CLIR procedure interacts with SS-CLIP as has been described at length in this ETS.

##### **4.6.2 Talking party identification**

###### **4.6.2.1 With SS-CLIP**

SS-TPI and SS-CLIP shall interact when the talking / sending party at call set-up time in a group call is another user than the calling user, to whom transmission permission has been granted automatically and when no SS-TPI INFORM PDU is sent in the D-SETUP PDU: in that specific case SS-CLIP shall not be invoked, i.e. the calling user identity shall not be delivered to any participant in the group call.

###### **4.6.2.2 With SS-CLIR**

If SS-CLIR has been invoked for the talking / sending party, neither his identity nor his mnemonic name shall be included in any air interface PDU sent by either the group controlling SwMI or the connected user SwMI to the served user MS/LS (of SS-TPI). The value of the information element SS-CLIR invoked for talking/sending party in the SS-TPI INFORM PDU shall be set to 1.

NOTE: As mandated by ETS 300 392-10-3 [17], on the stage 1 description of SS-TPI, any SwMI supporting SS-TPI has to support SS-CLIR for the distant party which has invoked it.

There shall be no interaction between SS-TPI and SS-CLIR operations when SS-CLIR has been invoked for the SS-TPI served user.

##### **4.6.3 Interactions with ISI Mobility Management (ANF-ISIMM) of SS-CLIP**

Except for the call-per-call operation of SS-CLIR, both SS-CLIP and SS-CLIR can be treated similarly (but not identically). For the permanent mode of operation of SS-CLIR, the SS-PROFILE TYPE will be different and the served user of SS-CLIP is different from the served user of SS-CLIR (connected vs. calling). The difference in profiles for each calling identification justifies the assignment of different values of SS-TYPE for each supplementary services.

The case of mobility during a call is not dealt with in this ETS.

NOTE: Call restoration has no impact on SS-CLIP nor on SS-CLIR; call restoration occurs after the completion of the call and after the completion of actions of SS-CLIP or SS-CLIR.

**4.6.3.1 SS-CLIP profiles**

**4.6.3.1.1 SS-CLIP information**

The SS-CLIP information element shall indicate if SS-CLIP should be supported for the individual subscriber in the visited SwMI. It shall indicate SS status and shall be encoded as described in clause 34 of ETS 300 392-3-5 [16]. SS-CLIP profile response shall be as encoded in clause 34 of ETS 300 392-3-5 [16].

**4.6.3.1.2 SS-CLIP migration original profile**

SS-CLIP migration original profile is actually an ANF-ISIMM information element, sent by the home SwMI to the visited SwMI of a user (to be called) when this user migrates, as part of the SS profile information (see clause 34 of ETS 300 392-3-5 [16]).

SS-CLIP profile shall contain information elements as defined in table 6.

**Table 6: SS-CLIP migration original profile information element contents**

Information element	Length	Type	C/O/M	Value	Remark
SS-Type	6	1	M		SS-CLIP note 1
SS-CLIP Provided / Non Provided	1	1	M	1 <sub>2</sub> provided 0 <sub>2</sub> non-provided	
Override privilege for SS-CLIR	1	1	O	1 <sub>2</sub> override 0 <sub>2</sub> no override	note 2
NOTE 1: This profile could be combined with SS-COLR profile.					
NOTE 2: If override is implemented, this field is mandatory.					

NOTE: There is no need to specify the identity of the user to whom the profile information element specified in the above table applies since the ANF-ISIMM PDU which carries that information element already includes that identity.

**4.6.3.2 SS-CLIP migration original profile response information element**

Like SS-CLIP profile, SS-CLIP profile response is an ANF-ISIMM information element, sent by the visited SwMI of a user (to be called) to his home SwMI as part of the SS profile response information (see ETS 300 392-3-5 [16]). It is an acknowledgement of the corresponding SS-CLIP profile.

SS-CLIP migration original profile response shall contain information elements as defined in table 7 with the same values as table 6.

**Table 7: SS-CLIP migration original profile response information element contents**

Information element	Length	Type	C/O/M	Value	Remark
SS-Type	6	1	M		SS-CLIP note 1
SS-CLIP Provided / Non Provided	1	1	M		
Override privilege for SS-CLIR supported / not supported	1	1	O		note 2
NOTE 1: This profile could be combined with SS-COLR profile.					
NOTE 2: If override is supported by the home SwMI, the content of the override ack is mandatory.					



### 4.6.3.3 Operation of Interaction with ISI MM of SS-CLIP

When a user (to be connected) migrates to a visited SwMI, his home SwMI shall send the following SS-CLIP profile information to this visited SwMI through ANF-ISIMM:

- SS-CLIP provided or not to the user.

SS-CLIP provision or non provision shall be sent by the home SwMI as part of ANF-ISIMM basic profile information, in the ANF-ISIMM PROFILE PDU (see relevant clause of ETS 300 392-3-5 [16]).

The visited SwMI shall acknowledge the transfer of that information, in indicating to the home SwMI, also through ANF-ISIMM, as acknowledgement of the basic profile information, whether or not it supports:

- SS-CLIP as served user SwMI.

Since there is no activation / deactivation / definition / interrogation/ for SS-CLIP, there is no need for profile upgrade.

### 4.6.4 Interactions of SS-CLIR with ISI Mobility Management (ANF-ISIMM)

#### 4.6.4.1 SS-CLIR Profiles

##### 4.6.4.1.1 SS-CLIR information

The SS-CLIR information element shall indicate if SS-CLIR should be supported for the individual subscriber in the visited SwMI. It shall indicate SS status and shall be encoded as described in clause 34 of ETS 300 392-3-5 [16]. SS-CLIR profile response shall be as encoded in clause 34 of ETS 300 392-3-5 [16].

NOTE: SS-CLIR has to be supported for any SwMI supporting ISI.

##### 4.6.4.1.2 SS-CLIR migration original profile

SS-CLIR migration original profile is actually an ANF-ISIMM information element, sent by the home SwMI to the visited SwMI of a user (to be calling) when this user migrates, as part of the SS profile information (see ETS 300 392-3-5 [16]).

SS-CLIR migration original profile shall contain information sub-elements as defined in table 8.

**Table 8: SS-CLIR migration original profile information element contents**

Information sub-element	Length	Type	C/O/M	Value	Remark
SS-Type	6	1	M		SS-CLIR note 1
SS-CLIR Permanent / Temporary Mode	7	1	M	0 <sub>2</sub> P 1 <sub>2</sub> T	note 2
Default value of SS-CLIR temporary mode restricted / non-restricted	1	1	C	0 <sub>2</sub> R 1 <sub>2</sub> N-R	notes 3 and 4
NOTE 1:	This profile could be combined with SS-COLP profile.				
NOTE 2:	P for Permanent; T for Temporary.				
NOTE 3:	R for Restricted; N-R for Non-Restricted.				
NOTE 4:	Conditional on temporary.				

NOTE: There is no need to specify the identity of the user to whom the profile information element specified in the above table applies since the ANF-ISIMM PDU which carries that information element already includes that identity.

#### 4.6.4.2 SS-CLIR migration original profile response information element

Like SS-CLIR migration original profile, SS-CLIR migration original profile response is an ANF-ISIMM information element, sent by the visited SwMI of a user (to be calling) to his home SwMI as part of the SS profile response information (see ETS 300 392-3-5 [16]). It is an acknowledgement of the corresponding SS-CLIR profile.

SS-CLIR migration original profile response shall contain information sub-elements as defined in table 9 with the same values as in table 8.

**Table 9: SS-CLIR migration original profile response information element contents**

Information sub-element	Length	Type	C/O/M	Value	Remark
SS-Type	6	1	M		SS-CLIR note
SS-CLIR Permanent / Temporary Mode	7	1	M		
Default value of SS-CLIR temporary mode	1	1	M		
NOTE: This profile could be combined with SS-COLP profile.					

#### 4.6.4.3 Operation of Interaction of SS-CLIR with ISI MM

When a user (to be calling) migrates to a visited SwMI, his home SwMI shall send the following SS-CLIR profile information to this visited SwMI through ANF-ISIMM:

- possible restriction of presentation of the calling user identity in a permanent mode or a temporary mode (i.e. SS-CLIR has been invoked for this user).

SS-CLIR shall be sent by the home SwMI as part of ANF-ISIMM basic profile information, in the ANF-ISIMM PROFILE PDU (see relevant clause of ETS 300 392-3-5 [16]).

The visited SwMI shall acknowledge the transfer of that information, in indicating to the home SwMI, also through ANF-ISIMM, as acknowledgement of the basic profile information, whether or not it supports:

- SS-CLIR as served user SwMI, if the restriction of presentation of the identity of the user has been requested on a permanent mode.

Since there is no activation / deactivation / definition / interrogation/ for SS-CLIP, there is no need for profile upgrade.

#### 4.7 SS-CLIP and SS-CLIR parameter values (timers)

There shall be no timer for either SS-CLIP or SS-CLIR procedures.

## 5 Signalling protocol for the support of SS-COLP and SS-COLR

### 5.1 SS-COLP and SS-COLR description

It is assumed that SS-COLP may be invoked independently from SS-CLIP and in the same manner, SS-COLR may be invoked independently from SS-CLIR thus the justification of separating those supplementary services in this ETS.

### 5.1.1 SS-COLP description

#### 5.1.1.1 General

SS-COLP provides the calling user with the possibility to receive identification of the connected user. SS-COLP is not a validity check of the called identity dialling but gives an indication to the calling user of the connected address. In a TETRA environment, the connected line identity shall include all the information necessary to unambiguously identify the connected line.

This clause describes SS-COLP specific services offered by the Circuit Mode Control Entity (CMCE) at the Supplementary Services service access point (TNSS-SAP) of the TETRA voice plus data layer 3 service boundary in a TETRA Mobile Station (MS) or TETRA Line Station (LS). The SS-COLP service access point is used in conformance testing as a normative boundary in MSs and LSs.

NOTE: All the service primitives have been shown without a TNSS-COLP-prefix.

#### 5.1.1.2 SS-COLP services offered over the TNSSSAP

NOTE: As man-machine interface or user applications are outside the scope of the present document service primitives are used to define information exchange to and from the standardized part of the MS/LS. Those primitives may be only indirectly accessible.

The SS-COLP service primitives at the served user MS/LS TNSS-SAP shall be:

- INFORM4 indication.

#### 5.1.1.3 INFORM4 indication

The INFORM4 indication primitive shall be sent to the calling user application by the MS/LS CMCE over TNSS-SAP as a result of SS-COLP operation. The INFORM4 indication primitive shall contain the SS-COLP parameters listed in table 10.

**Table 10: Parameters for the primitive INFORM4 indication**

Parameter	Indication
SS-COLR invoked for connected user	M
COnnected Line Identity (COLI)	C (note 1)
Override	O (note 2)
NOTE 1: Conditional on SS-COLR not having been invoked for calling user.	
NOTE 2: When implemented, INFORM4 is presented with the indication that the identity of the connected user is provided due to override.	

### 5.1.2 Parameter description

SS-COLR invoked for connected user:

- 00 not implemented or default mode;
- 10 no restriction;
- 11 restriction.

Override:

- 1 overridden;
- 0 not overridden.

COnnected Line Identity:

- Short Subscriber Identity (SSI);

- Short Subscriber Identity (SSI) + Address extension;
- Gateway identity;
- External subscriber number.

NOTE 1: The numbering plan, the type of number and the screening indicator are needed to the originating SwMI in the case of interworking

Screening indicators (only for interworking)

- number not available due to interworking.

NOTE 2: The following screening indicator parameter needs to be brought to the originating SwMI:

- network provided;
- user provided, verified and passed;
- user provided, not screened (only occurs in certain interworking situations).

### **5.1.3 SS-COLR description**

#### **5.1.3.1 General**

SS-COLR is sometimes treated in the same document as SS-CLIR (ECMA-148) or in separate documents in case of public ISDN; SS-COLR enables the connected user to prevent presentation of its identity to the calling user. SS-COLR is offered to the connected user (which may be different from the called user). When SS-COLR is applicable and active, the terminating SwMI shall provide the originating SwMI with the indication that the connected user's identity is not allowed to be presented to the calling user (exception in the case of override). In this case no connected user identity shall be included in the connected information presented to the calling user even though this calling user has subscribed to the SS-COLP.

The presentation restriction shall not influence the forwarding of the connected user identity within the network as part of the basic call set up procedures.

This clause describes SS-COLR specific services offered by the Circuit Mode Control Entity (CMCE) at the Supplementary Services service access point (TNSS-SAP) of the TETRA voice plus data layer 3 service boundary in a TETRA Mobile Station (MS) or TETRA Line Station (LS). The SS-COLR service access point is used in conformance testing as a normative boundary in MSs and LSs.

NOTE: All the service primitives have been shown without a TNSS-COLR-prefix.

#### **5.1.3.2 SS-COLR services offered over the TNSSSAP**

NOTE: As man-machine interface or user applications are outside the scope of the present document service primitives are used to define information exchange to and from the standardized part of the MS/LS. Those primitives may be only indirectly accessible.

The SS-COLR service primitives at the served user MS/LS TNSS-SAP shall be:

- INVOCATION request;
- INFORM5 indication (SS-COLR overridden to the connected user);
- INFORM6 indication (SS-COLR invoked, presentation restricted or presentation authorized due to override).

### 5.1.3.2.1 INVOCATION request

The INVOCATION request primitive shall be sent by the connected user application to the MS/LS CMCE over TNSS-SAP as a result of SS-COLR operation. The INVOCATION request primitive shall contain the SS-COLR parameters listed in table 11.

**Table 11: Parameters for the primitive INVOCATION request**

Parameter	Request
SS-COLR invoked for connected user	M

### 5.1.3.2.2 INFORM5 indication

The INFORM5 indication primitive shall be sent to the connected user application by the MS/LS CMCE over TNSS-SAP as a result of SS-COLR operation to indicate to the connected user that SS-COLR override has taken place. The INFORM5 indication primitive shall contain the SS-COLR parameters listed in table 12.

**Table 12: Parameters for the primitive INFORM5 indication**

Parameter	Indication
SS-COLR Overridden by Calling User	M note
NOTE: This INFORM5 indication is presented only in the case where override is implemented and has taken place.	

### 5.1.3.2.3 INFORM6 indication

The INFORM6 indication primitive shall be sent to the calling user application by the MS/LS CMCE over TNSS-SAP as a result of SS-COLR operation to indicate that COLI is either restricted of presentation or presented due to override. The INFORM6 indication primitive shall contain the SS-COLR parameters listed in table 10 and shall be identical to INFORM4.

### 5.1.4 Parameter description

SS-COLR invoked for connected user:

- 00 not implemented or default mode;
- 10 no restriction;
- 11 restriction.

Override:

- 1 overridden;
- 0 not overridden.

COnnected Line Identity:

- Short Subscriber Identity (SSI);
- Short Subscriber Identity (SSI) + Address extension;
- Gateway identity;
- External subscriber number.

NOTE 1: The following indicator parameters need to be presented to the originating SwMI in the case of interworking:

- numbering plan;
- type of number (local, national, international).

Screening indicators (only for interworking):

- number not available due to interworking.

NOTE 2: The following screening indicator parameters need to be provided to the originating SwMI in the case of interworking:  
network provided;  
user provided, verified and passed;  
user provided, not screened.

## **5.2 SS-COLP and SS-COLR operational requirements**

### **5.2.1 SS-COLP operational requirements**

#### **5.2.1.1 Served user MS/LS**

The served user (connected user) MS/LS shall comply with the requirements in clause 14 of ETS 300 392-2 [4] which apply to the tele- and bearer services which it supports.

#### **5.2.1.2 Originating SwMI**

The originating SwMI is also the served user SwMI. That SwMI shall support the served user MS/LS complying with the requirements for individual calls in ETS 300 392-2 [4] clause 14. It shall support the served user MS/LS complying with the requirements for group calls in ETS 300 392-2 clause 14. If the call is over ISI, the originating SwMI shall also comply with the corresponding requirements for Individual Calls in ETS 300 392-3-2 [14] and in ETS 300 392-3-3 [15] for group calls. All information relating to COLP supplementary service shall be received in the CONNECT message sent as part of the basic individual or group call set-up.

#### **5.2.1.3 Terminating SwMI**

The terminating SwMI may either be the SwMI of the connected TETRA MS/LS or the gateway SwMI in case of interworking.

For an individual call, that SwMI shall support the possibility for the connected user MS/LS to participate in the call as defined in ETS 300 392-2 [4] for individual calls.

The same shall apply for group calls if that SwMI is different from the group controlling SwMI.

If the call is over the ISI, the connected user SwMI shall comply with the corresponding ISI requirements, set in ETS 300 392-3-2 [14] for individual calls and in ETS 300 392-3-3 [15] for group calls.

All information pertaining to SS-COLP shall be inserted in the CONNECT message sent as part of the basic call procedures according to ETS 300 392-2 [4] and ETS 300 392-3-2 [14] and ETS 300 392-3-3 [15].

## **5.2.2 SS-COLR operational requirements**

### **5.2.2.1 Served user MS/LS**

The served user MS/LS shall comply with the requirements in clause 14 of ETS 300 392-2 [4] which apply to the tele- and bearer services which it supports.

### **5.2.2.2 Originating SwMI**

That SwMI shall support the calling user MS/LS complying with the requirements for individual calls in subclause 4.2.2.1. It shall also support the served user with the requirements for group calls set in subclause 4.2.2.1. if it is different from the group controlling SwMI. If the call is over ISI, the served user SwMI /originating SwMI shall also comply with the corresponding requirements set in ETS 300 392-3-2 [14] for individual calls and in ETS 300 392-3-3 [15].

### **5.2.2.3 Terminating SwMI**

The terminating SwMI is the SS-COLR served user SwMI. The terminating SwMI shall support the served user with complying with the requirements in ETS 300 392-3-2 [14] for individual calls and ETS 300 392-3-3 [15] for group calls.

All information pertaining to SS-COLR shall be inserted in the CONNECT message sent as part of the basic call procedures according to clause 14 of ETS 300 392-2 [4].

In the case of a call over ISI, the terminating SwMI shall comply with the relevant clauses of ETS 300 392-3-2 [14] for individual call or ETS 300 392-3-3 [15] for group calls.

## **5.3 SS-COLP and SS-COLR coding requirements**

### **5.3.1 Operations**

### **5.3.2 SS-COLP coding requirements**

#### **5.3.2.1 SS-COLP PDU**

NOTE: There is no SS-COLP INVOCATION PDU since SS-COLP is either permanently invoked or permanently not invoked.

##### **5.3.2.1.1 EXTERNAL NUMBER PDU**

See subclause A.3.2

##### **5.3.2.1.2 INFORM4 PDU**

INFORM4 PDU is sent to the MS/LS of the served (calling) user by the SwMI where that user is registered (the calling user SwMI). This PDU is used to present to the calling user the COnnected Line Identification. This PDU is associated to the D-CONNECT in the facility field of D-CONNECT. This PDU is used only at the Air Interface and is not needed for a call over ISI where the ISI CONNECT message carries all needed information in support of SS-COLP.

The presentation indicator corresponding to the restriction / non restriction of presentation of COLI is coded into the notification indicator of the D-CONNECT. In the case where presentation is restricted and override has not been invoked, this INFORM4 PDU will not be presented. The normal use of that PDU is in support of normal SS-COLP operation (no SS-COLR and therefore no override).

INFORM4 PDU shall contain the SS-COLP information elements described in table 13.

**Table 13: INFORM4 PDU contents**

Information element	Length	Type	C/O/M	Remark
SS-Type	6	1	M	Defined in ETS 300 392-9 [6] note 1
SS-COLP PDU type	5	1	M	INFORM4
Address type of connected user	2	2	O	
Connected user SSI	24	2	C	note 2
Connected user extension	24	2	C	note 2
External subscriber number length	5	2	O	notes 3 and 4
External subscriber number digits	variable	2	C	note 5
NOTE 1: Each call identification supplementary service has its own SS-Type due to mobility management.				
NOTE 2: Conditional on address type.				
NOTE 3: Value 0 of length indicates external number not known.				
NOTE 4: Only in the case of interworking.				
NOTE 5: Only in the case of interworking.				

**5.3.2.2 TETRA PDU information element coding**

**5.3.2.2.1 COnnected Line Identification Information Elements**

Address type of connected user, Connected user SSI, Connected user extension, External connected subscriber number length and External connected subscriber number digits information elements shall be encoded as in ETS 300 392-9 [6].

**5.3.2.2.2 Numbering plan identifier information element**

See subclause A.3.2.

**5.3.2.2.3 Screening Indicator information element**

See subclause A.3.2.2.

**5.3.2.2.4 SS-COLP PDU Type**

SS-COLP-PDU type indicates the type of the SS-COLP PDU as defined in table 14.

**Table 14: SS-COLP PDU type information element contents**

Information element	Length	Value	Remark
	5	00000 <sub>2</sub>	Refer ETS 300 392-9 [6]
		00001 <sub>2</sub>	Refer ETS 300 392-9 [6]
INFORM4		00010 <sub>2</sub>	
EXTERNAL NUMBER PDU		00011 <sub>2</sub>	

**5.3.2.2.5 Type of Number information element**

See subclause A.3.2.1.



### 5.3.2.3 Operations

At the air interface, the U-CONNECT PDU format being different from the D-SETUP, the two bits "reserved" in the D-SETUP used for SS-CLIR are not available; moreover, the U-CONNECT does not include the connected user identification which will have to be provided by the terminating SwMI. If SS-COLP is active at the time the calling user initiates a call, and unless SS-COLR is active for that call as will be described in the following clause, the terminating SwMI shall set SS-COLP to the subscribed value (INVOKED or non-INVOKED).

The COLI COnnected Line Identification defined in stages 1 and 2 ETS 300 392-10-1 [7] and ETS 300 392-11-1 [8] shall be encoded in several different information elements: the COnnected line identity shall be included in the Connected SSI / Connected User Extension in the case of an internal TETRA call; the external subscriber number length / external subscriber number digits as well as the TETRA Gateway ITSI shall be included in the case of interworking; the presentation RESTRICT indicator shall be coded in the bit SS-COLR (same bit as SS-CLIR bit but in the other direction) invoked for connected user.

### 5.3.3 SS-COLR coding requirements

#### 5.3.3.1 SS-COLR PDUs

##### 5.3.3.1.1 INVOCATION

INVOCATION PDU is sent from the MS/LS served (connected) user application to that served user SwMI. This PDU is used to present the SS-COLR invocation and to set the RESTRICTION / NO RESTRICTION to the value chosen by the user application. This PDU is associated to the U-CONNECT in the facility field of that U-CONNECT. This PDU is used only at the air interface and needs not to be carried over ISI where the ISI CONNECT message carries all the information in support of SS-COLR.

INVOCATION PDU shall contain the SS-COLR information elements described in table 15.

**Table 15: INVOCATION PDU contents**

Information element	Length	Type	C/O/M	Remark
SS-Type	6	1	M	Defined in ETS 300 392-9 [6] note 1
SS-COLR PDU type	5	1	M	INVOCATION note 2
SS-COLR requested by connected user	2	1	M	
NOTE 1:	Each call identification supplementary service has its own SS-Type due to mobility management.			
NOTE 2:	See table below.			

##### 5.3.3.1.2 INFORM5 PDU

INFORM5 PDU is sent to the MS/LS of the SS-COLR served user by the SwMI where that user is registered (connected user SwMI) to deliver to this user the SS-COLR information indicating that SS-COLR has been overridden. This PDU shall be sent in the case where override has been invoked only. It shall be associated with the D-CONNECT ACKNOWLEDGE in the case of Individual Call in a Facility field; this D-CONNECT ACKNOWLEDGE contains the call reference to identify for which call the SS-COLR has been overridden. In the case of a group call, the same information is coded in the notification indicator.

INFORM5 PDU shall contain the SS-COLR information elements described in table 16.

**Table 16: INFORM5 PDU contents**

Information element	Length	Type	C/O/M	Remark
SS-Type	6	1	M	Defined in ETS 300 392-9 [6] note 1
SS-COLR PDU type	5	1	M	INFORM5 note 2
SS-COLR override by calling user	1	1	C	note 3
NOTE 1:	Each call identification supplementary service has its own SS-Type due to mobility management.			
NOTE 2:	See table below.			
NOTE 3:	Conditional on SS-COLR invocation and override invocation.			

### 5.3.3.1.3 INFORM6 PDU

INFORM6 PDU is sent to the MS/LS of the calling user to indicate to that user that SS-COLR has been invoked for that call and that override has been invoked. INFORM6 PDU is sent in association with the D-CONNECT in the Facility element. The normal use of this PDU will be to inform the calling user of restriction of COLI presentation due to invocation of SS-COLR by the connected user and that presentation of the connected user identity is due to override. The content of INFORM6 in terms of COLI is identical to the content in INFORM4 in normal SS-COLP operations.

In the case where SS-COLR has been invoked and that override is either not implemented or not invoked, the restriction of COLP shall be given in the notification indicator and this INFORM6 PDU shall not be presented.

INFORM6 PDU shall contain the SS-COLR information elements described in table 17.

**Table 17: INFORM6 PDU contents**

Information element	Length	Type	C/O/M	Remark
SS-Type	6	1	M	Defined in ETS 300 392-9 [6] note 1
SS-COLR PDU type	5	1	M	INFORM4
SS-COLR invoked	2	1	M	
SS-COLR override invoked	1	1	O	
Address type of connected user	2	2	O	
Connected user SSI	24	2	C	note 2
Connected user extension	24	2	C	note 2
External subscriber number length	5	2	O	notes 3 and 4
External subscriber number digits	variable	2	C	note 5
Screening Indicator Air Interface	4	3	O	note 5
NOTE 1:	Each call identification supplementary service has its own SS-Type due to mobility management.			
NOTE 2:	Conditional on address type.			
NOTE 3:	Value 0 of length indicates external number not known.			
NOTE 4:	Only in the case of interworking.			
NOTE 5:	Only in the case of interworking.			

### 5.3.3.1.4 TETRA PDU information element coding

### 5.3.3.1.5 Connected User Identification Information Elements

Address type of connected user, Connected user SSI, Connected user extension, External connected subscriber number length and External connected subscriber number digits information elements shall be as specified in ETS 300 392-9 [6].

**5.3.3.1.6 SS-COLR PDU Type**

SS-COLR-PDU type indicates the type of the SS-COLR PDU as defined in table 18.

**Table 18: SS-COLR PDU type information element contents**

Information element	Length	Value	Remark
	5	00000 <sub>2</sub>	Refer ETS 300 392-9 [6]
		00001 <sub>2</sub>	Refer ETS 300 392-9 [6]
INVOCATION		00010 <sub>2</sub>	
INFORM5		00011 <sub>2</sub>	
INFORM6		00100 <sub>2</sub>	

**5.3.3.1.7 SS-COLR requested by connected user information element**

The SS-COLR requested by connected user information element shall be coded as specified in table 19.

**Table 19: SS-COLR requested by connected user information element contents**

Information element	Length	Value	Remarks
SS-COLR requested by connected user	2	00 <sub>2</sub>	Use default value (note)
		01 <sub>2</sub>	reserved
		10 <sub>2</sub>	SS-COLR invoked; NO RESTRICTION
		11 <sub>2</sub>	SS-COLR invoked; RESTRICTION
NOTE: Or not implemented.			

**5.3.3.1.8 SS-COLR invoked for connected user information element**

The SS-COLR invoked for connected user information element shall be coded as specified in table 20.

**Table 20: SS-COLR invoked for connected user information element contents**

Information element	Length	Value	Remarks
SS-COLR invoked for connected user	1	0 <sub>2</sub>	Presentation not restricted
		1 <sub>2</sub>	Presentation restricted

**5.3.3.1.9 SS-COLR override by calling user information element**

The SS-COLR override by calling user information element shall be coded as specified in table 21.

**Table 21: SS-COLR override by calling user information element contents**

Information element	Length	Value	Remarks
SS-COLR override by calling user	1	0 <sub>2</sub>	No override
		1 <sub>2</sub>	Override

**5.3.3.1.10 SS-COLR override invoked**

The SS-COLR override invoked information element shall be coded as specified in table 22.

**Table 22: SS-COLR override invoked information element contents**

Information element	Length	Value	Remarks
SS-COLR override invoked	1	0 <sub>2</sub> 1 <sub>2</sub>	No override Override

**5.3.3.1.11 Screening Indicator Air Interface information element**

The screening indicator air interface information element shall be coded as specified in table 23.

**Table 23: Screening indicator air interface information element contents**

Information element	Length	Value	Remarks
Screening element air interface	4	0000 <sub>2</sub>	Number not available due to interworking note
NOTE: Other screening indicator values may be implemented.			

**5.3.3.2 Operations**

The facility field of the U-CONNECT PDU shall be used to convey the information element SS-COLR invoked by the connected user MS/LS. In the case where SS-COLR is subscribed to for that particular connected user, the facility field shall be mandatory for that U-CONNECT PDU.

In the case where the call involves more than one SwMI, the ISI PSS1 CONNECT message shall be used. The PSS1 CONNECT PDU contents for SS-COLR invocation shall be as given in ETS 300 392-3-2 [14] with the extension of the notification indicator values to cover SS-COLR or SS-COLR Override and the SS-COLR invoked for connected user set to the proper value (RESTRICTED or NOT RESTRICTED). This one-bit information element is actually carried in the SS-CLIR bit.

The SS-COLR restriction shall be associated to the basic call set up and shall be indicated to the originating (calling user) SwMI in the TETRA PDU sent in the PSS1 CONNECT message.

On the calling side user MS/LS, the restriction of COnnected Line presentation shall be notified using notification indicator information element in the D-CONNECT PDU.

See subclause A.2.1.

NOTE: According to the definition of this information element in subclause 14.8.27 of ETS 300 392-2 [4], when a SwMI receives such information element in a (call related) ISI PDU, it will relay it to the MS/LS.

**5.4 SS-COLP and SS-COLR state definitions**

The discussion contained in subclause 4.4 for SS-CLIP and SS-CLIR applies to SS-COLP and SS-COLR; both have only one state each which is SS-COLP-idle or SS-COLR-idle respectively.

## **5.5 SS-COLP and SS-COLR signalling procedures**

### **5.5.1 SS-COLP**

For SS-COLP, the MS/LS procedures shall be provided as part of the basic service and the connected user need not have subscribed to the SS-COLP; there is therefore no specific signalling procedure at the connected MS/LS.

#### **5.5.1.1 Actions at the originating SwMI for SS-COLP**

The originating SwMI for SS-COLP may either be the calling user SwMI or the gateway SwMI.

The SDL representation of procedures at the Originating SwMI is shown in figure B.4.

The SDL representation of the SS-COLR procedure which impacts the SS-COLP results is shown in figure B.5.

##### **5.5.1.1.1 Normal procedures**

When the originating SwMI receives a CONNECT message for the calling user and if the calling user is provided with SS-COLP, the SwMI shall check that the connected identity is available.

If the connected identity is available and presentation is allowed according to the presentation RESTRICT indicator supplied with the connected identity, the originating SwMI shall include the connected identity information element in the CONNECT PDU sent to the calling user.

If the calling user is not provided with the SS-COLP, then the Connected identity information element shall not be included in the CONNECT PDU sent to the calling user (without any further information).

If presentation is restricted but the calling user has an "override" privilege, the originating SwMI shall include the Connected Line Identity (COLI) information element in the CONNECT PDU and inform calling user that SS-COLP occurs due to override.

In the rare cases where the originating SwMI receives several U-CONNECT messages from the MS/LS, the SwMI shall decide which CONNECT to select and shall perform the procedure for only one connect.

In case of TETRA connected user, the identity shall always be SwMI provided and not user provided. No checking of the validity of the identity shall be necessary and no screening indicator needs be provided.

##### **5.5.1.1.2 Exceptional procedures**

Not applicable.

#### **5.5.1.2 Actions at the group controlling SwMI**

Shall be identical to the actions at the originating SwMI.

#### **5.5.1.3 Actions at the terminating SwMI for SS-COLP**

##### **5.5.1.3.1 Normal procedures**

These procedures shall be provided as part of the basic service and the connected user need not have subscribed to the SS-COLP. The terminating SwMI may either be a TETRA end user SwMI or a gateway SwMI for interworking.

When a CONNECT message is received from the connected user, the terminating SwMI shall check that the Connected identity is included.

The ITSI digits shall be forwarded to the originating SwMI, in association with basic call response, regardless of the presentation restriction indicator(invocation of SS-COLR by the connected user).

In the case where override has been invoked by the calling user, the terminating SwMI shall inform the connected user that its line identity has been presented to the calling user due to override in a CONNECT ACKNOWLEDGE.

#### **5.5.1.3.2 Exceptional procedures**

Not applicable.

### **5.5.2 SS-COLR**

#### **5.5.2.1 Actions at the served / connected user for SS-COLR**

If the SS-COLR is requested by the served user on a per-call basis and the connected user wishes to overrule the default setting (in the case of temporary mode operation), the connected / served user MS/LS shall include, in the U-CONNECT PDU facility field, the presentation RESTRICT indicator set to "presentation restricted" or "presentation not restricted".

#### **5.5.2.2 Actions at the originating SwMI for SS-COLR**

Shall be as indicated in the SS-COLP actions at the originating SwMI subclause 5.5.1.

All information pertaining to the COLR supplementary service including the connected line identity shall be received in the CONNECT message sent as part of the basic individual or group call set-up. The originating SwMI shall receive the SS-COLR PDU, recognize the restricted presentation of the COLI and shall restrict that presentation unless override has been invoked by the calling user.

In the case where override privilege is implemented and is invoked, the originating SwMI shall generate an INFORM5 PDU towards the terminating SwMI containing the information that SS-COLR has been overridden due to override privilege of the calling user.

As an implementation option, the originating SwMI may also indicate to the calling user that the COLI is presented due to override.

#### **5.5.2.3 Actions at the group controlling SwMI for SS-COLR**

Shall be identical to the actions at the terminating SwMI.

#### **5.5.2.4 Actions at the terminating SwMI for SS-COLR**

The terminating SwMI is either the connected user SwMI or the gateway.

The SDL representation of procedures at the Terminating SwMI is shown in figure B.6.

##### **5.5.2.4.1 Normal procedures**

If the connected user has subscribed to the SS-COLR permanent mode, the terminating SwMI shall ignore the presentation RESTRICT indicator contained in the SS-COLR facility information element in the U-CONNECT PDU. The terminating SwMI shall set the presentation RESTRICT indicator to "presentation restricted".

If the connected user has subscribed to SS-COLR on a per-call basis, and the Connected identity information element containing a presentation RESTRICT indicator is included in the CONNECT PDU, then the destination / terminating SwMI shall set the presentation RESTRICT indicator according to the content of SS-COLR facility PDU received as part of the Connected identity information element.

If the connected user has subscribed to SS-COLR on a per call basis, and no presentation RESTRICT indicator is included in the CONNECT PDU, the terminating SwMI shall set the presentation RESTRICT indicator according to the subscribed default value setting.

The presentation RESTRICT indicator shall be forwarded to the originating SwMI in association with the basic call CONNECT PDU.

In the case where the connected user provided partial connected identity information, the SwMI shall set the COLI to number not available.

In the case where the calling user has overridden the SS-COLR, the terminating SwMI shall inform the connected user that its COLI has been presented to the calling user due to override.

The terminating SwMI shall generate a SS-COLR PDU informing the originating SwMI that SS-COLR has been invoked for that particular call and that particular user.

In the case of override privilege, an additional flow of information shall be required to carry the INFORM6 PDUs.

#### **5.5.2.4.2 Exceptional procedures**

Not applicable.

### **5.5.3 SS-COLP and SS-COLR impact of interworking.**

#### **5.5.3.1 SS-COLP**

On calls outgoing to non TETRA networks, the connected line number may be delivered to the gateway SwMI without an indication of connected line identity restriction. In this case, the gateway SwMI shall present the connected identity information element as described in subclause 5.5.1.1.

If the COnnected Line Identity information element is received with a coding of the numbering plan identifier field other than TETRA or unknown, the terminating SwMI shall either discard the connected identity information element and process the call as if that information was not received or use the extended external numbering information specified in the coding of SS-COLP.

The number digits and the screening indicator shall be forwarded to the originating SwMI, in association with basic call response, regardless of the presentation restriction indicator(invocation of SS-COLR).

The terminating SwMI shall either set the screening indicator to the value provided by the interworking network.

If the CONNECT message does not contain the connected identity information element or if that element has been determined to be incorrect, the terminating SwMI shall set the screening indicator to either number not available due to interworking or number unknown.

In case where no information is provided by the connected user (as part of the basic call procedures) in the case of interworking, the terminating SwMI shall provide indication to the served user MS/LS that no COLI is available due to interworking.

#### **5.5.3.2 SS-COLR**

On calls outgoing to non TETRA networks, it cannot be assured that a restriction indicator can be carried to the destination network. As an implementation option, the terminating gateway SwMI may restrict any information identifying the connected user from being forwarded to the originating network when the SS-COLR is applicable.

On calls incoming from non TETRA networks, the connected user number may be delivered to the SwMI gateway with an indication of connected line identity restriction. In this case, the terminating interworking SwMI which is also the gateway SwMI shall use the normal procedure of the terminating SwMI described in subclause 5.5.2.1.

If presentation is not allowed according to the presentation RESTRICT indicator supplied together with the Connected identity information element, the originating SwMI shall include the Connected identity information element in the CONNECT message sent to the calling user with the following coding:

- Notification information element set to SS-COLR;
- Screening indicator not provided;
- External subscriber number digits field not included;
- Gateway ITSI in the calling user identity field included.

If neither the connected identity nor an indication that presentation is restricted is available at the originating SwMI, the originating SwMI shall send to the calling user MS/LS the Connected identity information element in the CONNECT message with the following coding:

- No notification indicator;
- Screening indicator set to " number not available due to interworking".

## **5.6 Protocol interactions between SS-COLP and SS-COLR and other supplementary services and ANFs**

This clause specifies protocol interactions with other supplementary services and ANFs for which stage 3 TETRA ETSs had been published at the time of publication of this International Standard. For interactions with supplementary services and ANFs for which stage 3 TETRA ETSs are published subsequent to the publication of this International Standard, see those other stage 3 TETRA ETSs.

NOTE 1: Additional interactions that have no impact on the signalling protocol neither at the air interface nor at the ISI can be found in the relevant stage 1 description standards.

NOTE 2: Simultaneous conveyance of APDUs for either SS-COLP or SS-COLR and another supplementary service or ANF in the same message, each in accordance with the requirements of its respective stage 3 International Standard, does not, on its own, constitute a protocol interaction.

NOTE 3: Supplementary Services, which according to stage 1 statements are indicated as no possible interaction have not been repeated here.

### **5.6.1 Interaction of SS-COLP with SS-COLR**

The connected line identity shall not be presented if connected line identification restriction has been invoked at the calling user, unless the connected user has the privilege to override this restriction. An indication of SS-COLR shall be given to the calling user.

### **5.6.2 Talking party identification**

#### **5.6.2.1 With SS-COLP**

SS-TPI and SS-COLP can only interact when the connected user is the talking / sending party at call set-up in an individual call. Then there shall be no impact on SS-TPI operation, i.e. INFORM PDU sent in the D-CONNECT PDU shall include the identity of the talking/sending party, unless it is restricted. However no SS-COLP PDU shall be sent in the D-CONNECT PDU.

NOTE: There cannot be any interaction between SS-TPI and SS-COLP in the case of group call, since the information delivered then by SS-COLP is the identity of the group.



### 5.6.2.2 With SS-COLR

In the case where SS-COLR has been invoked for the talking party then that supplementary service shall take precedence over SS-TPI and neither the identity of the talking party nor his mnemonic name shall be given to the other party / parties in the call. However the information that SS-CLIR has been invoked for the talking party shall be delivered as an SS-TPI information.

SS-COLR may be overridden if a SS-TPI served user has been given the corresponding privilege, but this is outside the scope of the TPI ETS.

### 5.6.3 Call forward unconditional

#### 5.6.3.1 With SS-COLP

One can define to illustrate the interactions of CFU with SS-COLP, three users with their own identity:

- the original called user;
- a diverted-to user;
- the last diverted-to user who is the actual connected user.

One can then assume that all three users have not invoked SS-COLR. There are several options proposed to the calling user and to the three users defined above. In any case, the last diverted-to user shall have its identity presented to the calling user who has invoked SS-COLP since this last user is the actual connected user.

If the option "calling user is notified of diversion without diverted to number", no information is given to the calling user concerning the original called user diversion and any intermediate diverted-to user; only the last diverted-to user (which is also the connected user) shall have its identity presented as part of SS-COLP.

If the option "calling user is notified of diversion with diverted-to number", the calling user shall be informed of the successive diversions with the successive identities of the users to which the call has been diverted to as part of the Call Forward Unconditional supplementary service; in fact in that case he would not need to subscribe to SS-COLP; in fact one interaction is to avoid double presentation of the connected line identification, once through call diversion and once through SS-COLP.

#### 5.6.3.2 With SS-COLR

A diverted-to user who has invoked restriction (automatically or on request from the user) shall not have his identity presented to the calling user, either as SS-COLP or as part of a notification of diversion, unless the calling user has an override privilege. A diverted-to user who is provided with SS-COLR temporary mode shall not have his identity revealed to the calling user as part of notification of diversion until the diverted-to user has responded and it is known that restriction is not to be invoked, unless the calling user has an override privilege.

NOTE: The invocation of SS-COLR at the diverting user has no impact on the presentation of the diverting user's identity to the calling user or to the diverted-to user. These presentations are governed by options in the various diversion services.

In each of the above situations, a calling user that subscribes to SS-COLP and who has override capability shall not be able to receive the diverted-to user's identity as part of the diverting notification information, but can invoke SS-COLP with override in order to receive the connected line identity when the call is actually answered.

#### **5.6.4 Call authorized by dispatcher**

When outgoing calls are completed via dispatcher authorization, (i.e. the SS-CAD is activated) SS-COLR shall not be operative (temporary override) and the identity of the connected user shall be revealed to the dispatcher. However the SS-COLR shall be operative for incoming calls once authorized by the dispatcher.

#### **5.6.5 Discreet listening**

The SS-DL shall take precedence over SS-CLIR and the SS-DL monitoring user shall receive the identity of the monitored user. A user who has invoked a discreet listening call shall take precedence over SS-CLIR activated at the connected users privilege and the identity of the connected (monitored) user shall be revealed.

#### **5.6.6 Ambience listening**

Dispatcher invoked:

Call identification shall not have any interaction with ambience listening.

Should the dispatcher invoke the supplementary service "ambience listening", in order to monitor activity in a terminal of interest, then the dispatcher's identity shall not be presented to the listened-to user.

Self invoked:

Should the user invoke the supplementary service "ambience listening" in order that another user may listen to his activity, then his identity shall be presented to the connected user, even though the SS-CLIR may be activated in the users profile.

#### **5.6.7 Interactions with ISI Mobility Management (ANF-ISIMM) of SS-COLP and SS-COLR**

Except for the call-per-call operation of SS-COLR, both SS-COLR and SS-COLP can be treated similarly but not identically. For the permanent mode of operation of SS-COLR, the SS-TYPE will be different and the served user of SS-COLP is different from the served user of SS-COLR (calling vs. connected). The difference in profiles for each calling identification justifies the assignment of different values of SS-TYPE for each supplementary services.

The case of mobility during a call is not dealt with in this ETS.

NOTE: Call restoration has no impact on SS-COLP nor on SS-COLR; call restoration occurs after the completion of the call and after the completion of actions of SS-COLP or SS-COLR.

##### **5.6.7.1 SS-COLP Profiles**

###### **5.6.7.1.1 SS-COLP information**

The SS-COLP information element shall indicate if SS-COLP should be supported for the individual subscriber in the visited SwMI. It shall indicate SS status and shall be encoded as described in clause 34 of ETS 300 392-3-5 [16]. SS-COLP profile response shall be as encoded in clause 34 of ETS 300 392-3-5 [16].

### 5.6.7.1.2 SS-COLP migration original profile

SS-COLP migration original profile is actually an ANF-ISIMM information element, sent by the home SwMI to the visited SwMI of a user when this user migrates, as part of the SS migration original profile information (see ETS 300 392-3-5 [16]).

SS-COLP migration original profile shall contain information sub-elements as defined in table 24.

**Table 24: SS-COLP migration original profile information element contents**

Information sub-element	Length	Type	C/O/M	Value	Remark
SS-Type	6	1	M		SS-COLP note 1
SS-COLP Provided / Non Provided	1	1	M	<i>1<sub>2</sub> provided</i> <i>0<sub>2</sub> non-provided</i>	
Override privilege for SS-COLR	1	1	O	<i>1<sub>2</sub> override</i> <i>0<sub>2</sub> no override</i>	note 2
NOTE 1: This profile could be combined with SS-CLIR profile.					
NOTE 2: If override is implemented, this field is mandatory.					

NOTE: There is no need to specify the identity of the user to whom the profile information element specified in the above table applies since the ANF-ISIMM PDU which carries that information element already includes that identity.

### 5.6.7.1.3 SS-COLP migration original profile response information element

Like SS-COLP migration original profile, SS-COLP migration original profile response is an ANF-ISIMM information element, sent by the visited SwMI of a user to his home SwMI as part of the SS migration original profile response information (see ETS 300 392-3-5 [16]). It is an acknowledgement of the corresponding SS-COLP migration original profile.

SS-COLP migration original profile response shall contain information sub-elements as defined in table 25 with the same values as in table 24.

**Table 25: SS-COLP migration original profile response information element contents**

Information sub-element	Length	Type	C/O/M	Value	Remark
SS-Type	6	1	M		SS-COLP note 1
SS-COLP Provided / Non Provided	1	1	M		
Override privilege for SS-COLR supported / not supported	1	1	O		
NOTE 1: This profile ack could be combined with SS-CLIR profile; it deals with the calling user.					
NOTE 2: If override is supported by the home SwMI, the content of the override ack is mandatory.					

## 5.6.8 Operations of SS-COLP with ISI Mobility Management (ANF-ISIMM)

When a user migrates to a visited SwMI, his home SwMI shall send the following SS-COLP profile information to this visited SwMI through ANF-ISIMM:

- SS-COLP provided or not to the user.

SS-COLP provision or non provision shall be sent by the home SwMI as part of ANF-ISIMM basic profile information, in the ANF-ISIMM PROFILE PDU (see relevant clause of ETS 300 392-3-5 [16]).

The visited SwMI shall acknowledge the transfer of that information, in indicating to the home SwMI, also through ANF-ISIMM, as acknowledgement of the basic profile information, whether or not it supports:

- SS-COLP as served user SwMI.

Since there is no activation / deactivation / definition / interrogation/ for SS-COLP, there is no need for profile upgrade.

**5.6.8.1 SS-COLR profiles**

**5.6.8.1.1 SS-COLR information**

The SS-COLR information element shall indicate if SS-COLR should be supported for the individual subscriber in the visited SwMI. It shall indicate SS status and shall be encoded as described in clause 34 of ETS 300 392-3-5 [16]. SS-COLR profile response shall be as encoded in clause 34 of ETS 300 392-3-5 [16].

NOTE: SS-COLR has to be supported for any SwMI supporting ISI.

**5.6.8.1.2 SS-COLR migration original profile**

SS-COLR migration original profile is actually an ANF-ISIMM information element, sent by the home SwMI to the visited SwMI of a user (to be calling) when this user migrates, as part of the SS migration original profile information (see ETS 300 392-3-5 [16]).

SS-COLR migration original profile shall contain information sub-elements as defined in table 26.

**Table 26: SS-COLR migration original profile information element contents**

Information sub-element	Length	Type	C/O/M	Value	Remark
SS-Type	6	1	M		SS-COLR note 1
SS-COLR Permanent / Temporary Mode	7	1	M	0 <sub>2</sub> P 1 <sub>2</sub> T	note 2
Default value of SS-COLR temporary mode restricted / non-restricted	1	1	M	0 <sub>2</sub> R 1 <sub>2</sub> N-R	note 3
NOTE 1: This profile could be combined with SS-CLIP profile as it deals with the connected user.					
NOTE 2: P for Permanent; T for Temporary.					
NOTE 3: R for Restricted; N-R for Non-Restricted.					

NOTE: There is no need to specify the identity of the user to whom the profile information element specified in the above table applies since the ANF-ISIMM PDU which carries that information element already includes that identity.

**5.6.8.1.3 SS-COLR migration original profile response information element**

Like SS-COLR migration original profile, SS-COLR migration original profile response is an ANF-ISIMM information element, sent by the visited SwMI of a user (to be calling) to his home SwMI as part of the SS migration original profile response information (see ETS 300 392-3-5 [16]). It is an acknowledgement of the corresponding SS-COLR migration original profile.

SS-COLR migration original profile response shall contain information sub-elements as defined in table 27 with the same values as in table 26.

**Table 27: SS-COLR migration original profile response information element contents**

Information sub-element	Length	Type	C/O/M	Value	Remark
SS-Type	6	1	M		SS-COLR note
SS-COLR Permanent / Temporary Mode	7	1	M		
Default value of SS-COLR temporary mode	1	1	M		
NOTE: This profile could be combined with SS-CLIP profile as it deals with the connected user.					

**5.6.8.2 Operations of SS-COLR with ISI Mobility Management (ANF-ISIMM)**

When a user (to be connected) migrates to a visited SwMI, his home SwMI shall send the following SS-COLR profile information to this visited SwMI through ANF-ISIMM:

- possible restriction of presentation of the calling user identity in a permanent mode or a temporary mode (i.e. SS-COLR has been invoked for this user).

SS-COLR shall be sent by the home SwMI as part of ANF-ISIMM basic profile information, in the ANF-ISIMM PROFILE PDU (see relevant clause of ETS 300 392-3-5 [16]).

The visited SwMI shall acknowledge the transfer of that information, in indicating to the home SwMI, also through ANF-ISIMM, as acknowledgement of the basic profile information, whether or not it supports:

- SS-COLR as served user SwMI, if the restriction of presentation of the identity of the user has been requested on a permanent mode.

Since there is no activation / deactivation / definition / interrogation/ for SS-COLR, there is no need for profile upgrade.

#### **5.7 SS-COLP and SS-COLR parameter values (timers)**

There shall be no timer for either SS-CLIP or SS-COLR procedures.

## Annex A (normative): Required changes to TETRA ETSS in support of Call Identification Supplementary Services

This annex lists the changes to existing ETSS in support of Call Identification Supplementary Services. Once those changes will have been accepted and incorporated into the relevant ETSS, this annex can be deleted.

### A.1 Changes to ETS 300 392-2 Air Interface

#### A.1.1 Modified U-SETUP PDU

At the air interface, the coding of the U-SETUP is modified to handle the presentation not restricted / presentation restricted (invocation of SS-CLIR by the user in the case of call by call invocation). The PDU that appears in the D-SETUP message shall be carried over ISI in a PSS1 SETUP as given in table 86 of ETS 300 392-3-2 [14]. Changes to the U-SETUP content shall be as specified here in table A.1.

NOTE: This does not constitute a SS-CLIP/CLIR PDU but a change to the content of an existing PDU.

Message: U-SETUP  
 Response to: -  
 Response expected: D-CALL PROCEEDING / D-ALERT / D-CONNECT  
 Short description: This PDU shall be the request for a call set-up from a MS/LS.

**Table A.1: U-SETUP PDU contents**

Information element	Length	Type	Owner	C/O/M	Remark
PDU Type			CC	M	
...../.....					
<b>CLIR</b>	<b>2</b>	<b>1</b>	<b>SS</b>	<b>M</b>	<b>Changed</b>
...../.....					

The bits indicated CLIR take the place of the two bits indicated as " reserved" and shall be as coded in SS-CLIR information element. The calling user SwMI shall assemble the SETUP PDU using those bits and the status of the SS-CLIP (invoked or not invoked). Presentation not restricted shall not imply that the CGLI is presented to the connected user; presentation not restricted bit indicates only that the calling user has not invoked SS-CLIR for that call. CLIR bits specified below shall become the CLIR bit contained in basic call SET-UP for an ISI call.

NOTE: TETRA ETSS refer to CLIR bit or bits while ECMA-148 refer to RESTRICT indicator.

## A.2 Changes to ETS 300 392-9 Supplementary Services

### A.2.1 Notification indicator information element

The change in the notification indicator values is illustrated in table A.2.

**Table A.2: Contents of TETRA PDU in the PSS1 SETUP message sent by the originating SwMI**

Information element	Length	Type	Owner	C/O/M	Remark
PDU type			CCAp	M	ISI-ORIGINATING SETUP
...../.....					
SS-CLIR invoked for calling user	1	1	SS	M	
...../.....					
<b>Notification indicator</b>			<b>SS</b>	<b>O</b>	<b>Values changed</b>
...../.....					

All the information elements shall be as defined in ETS 300 392-3 [5] and ETS 300 392-9 [6] excepted the following additions:

- The Notification Indicator information element content shall be extended to cover SS-CLIR value 5 and 6 SS-CLIR Overridden. Coding of the Notification Indicator shall be as given in table A.3, modification of table 3 of ETS 300 392-9 [6].

**Table A.3: Notification indicator information element contents**

Information element	Length	Value	Remarks
Notification Indicator	6	0 <sub>10</sub>	LE Broadcast
		1 <sub>10</sub>	LE Acknowledgement
		2 <sub>10</sub>	LE Paging
		3 <sub>10</sub>	AL Operation
		4 <sub>10</sub>	BIC Call Barred
		5 <sub>10</sub>	<b>SS-CLIR/SS-COLR</b>
		6 <sub>10</sub>	<b>SS-CLIR-Overridden / SS-COLR-Overridden</b>
		7-63 <sub>10</sub>	Reserved

NOTE: According to the definition of this information element in subclause 14.8.27 of ETS 300 392-2 [4], when a SwMI receives such information element in a (call related) ISI PDU, it will relay it to the MS/LS.

## A.3 Changes to ETS 300 392-3-2 ISI Individual Call

### A.3.1 EXTERNAL NUMBER PDU in support of SS-CLIP

In the case of interworking, the external subscriber number digits N provided by the gateway SwMI is carried over ISI; the gateway SwMI shall allow to encode only for external numbers: the numbering plan, the type of number and the screening indicators in an EXTERNAL NUMBER PDU. Those elements shall be carried over ISI as defined in ETS 300 392-3-2 [14] for Individual Call and ETS 300 392-3-3 [15] for Group Call. The encoding for the EXTERNAL NUMBER PDU shall be as given in table A.4. This PDU shall be associated with the basic call SET-UP facility field.

The intelligent gateway shall indicate to the connected user the identity it must re-dial to reach the calling user where it happens to be.

Table A.4: EXTERNAL NUMBER PDU contents in support of SS-CLIP

Information element	Length	Type	C/O/M	Remark
SS-Type	6	1	M	Defined in ETS 300 392-9 [6] note
SS-CLIP PDU type	5	1	M	EXTERNAL NUMBER
Numbering plan identifier	4	3	M	
Type of Number	4	3	M	
Screening Indicator	4	3	M	
NOTE: Each Call Identification has its own SS-Type number.				

### A.3.2 Numbering Plan Identifier information element

The Numbering Plan Identifier information element shall be as specified in table A.5.

Table A.5: Numbering plan identifier information element.

Information element	Numbering plan	Remark
0	unknown	note
1	(TETRA)	note
2	E.164(PSTN/ISDN/GSM)	note
3	X.121(PDN)	note
NOTE: All digits are BCD (binary coded decimal)		

#### A.3.2.1 Type of Number information element

The Type of Number information element shall be as specified in table A.6.

Table A.6: Type of Number information element

Information element	Type of Number	Remark
0	Unknown	note
1	Local	note
2	National	note
3	International	note
4	TETRA	note
NOTE: All digits are BCD (binary coded decimal).		

#### A.3.2.2 Screening Indicators information element

The Screening Indicators information element shall be as specified in table A.7.

Table A.7: Screening Indicators information element

Information element	Screening indicators	Remark
0	None, not implemented, or unknown	Case of PSTN most likely; note
1	Network provided number	Case of Tetra; note
2	User provided, verified and passed	Case of ISDN; note
3	User provided, not screened	note
4	Number not available due to interworking	note
NOTE: All digits are BCD (binary coded decimal).		



### A.3.3 EXTERNAL NUMBER PDU in support of SS-COLP

In the case of interworking, the screening indicator, the type of numbering and the numbering plan shall be provided in the extension of the external subscriber number by an additional PDU. This EXTERNAL NUMBER PDU shall be provided by the Gateway SwMI and shall be associated with the CONNECT message in the Facility field in the case of interworking only and in the case of Individual Call only; EXTERNAL NUMBER PDU shall allow to encode, for external numbers only: the numbering plan, the type of number and the screening indicators.

The content of the external number PDU in support of SS-COLP shall be as defined in table A.8.

**Table A.8: EXTERNAL NUMBER PDU contents**

Information element	Length	Type	C/O/M	Remark
SS-Type	6	1	M	Defined in ETS 300 392-9 [6] note
SS-COLP PDU type	5	1	M	EXTERNAL NUMBER
Numbering plan identifier	4	3	M	
Type of Number	4	3	M	
Screening Indicator	4	3	M	
NOTE:	Each call identification supplementary service has its own SS-Type due to mobility management.			

### A.4 Changes to ETS 300 392-3-3 ISI Group Call

Not yet published.

## Annex B (informative): Specification and Description Language (SDL) representation of procedures

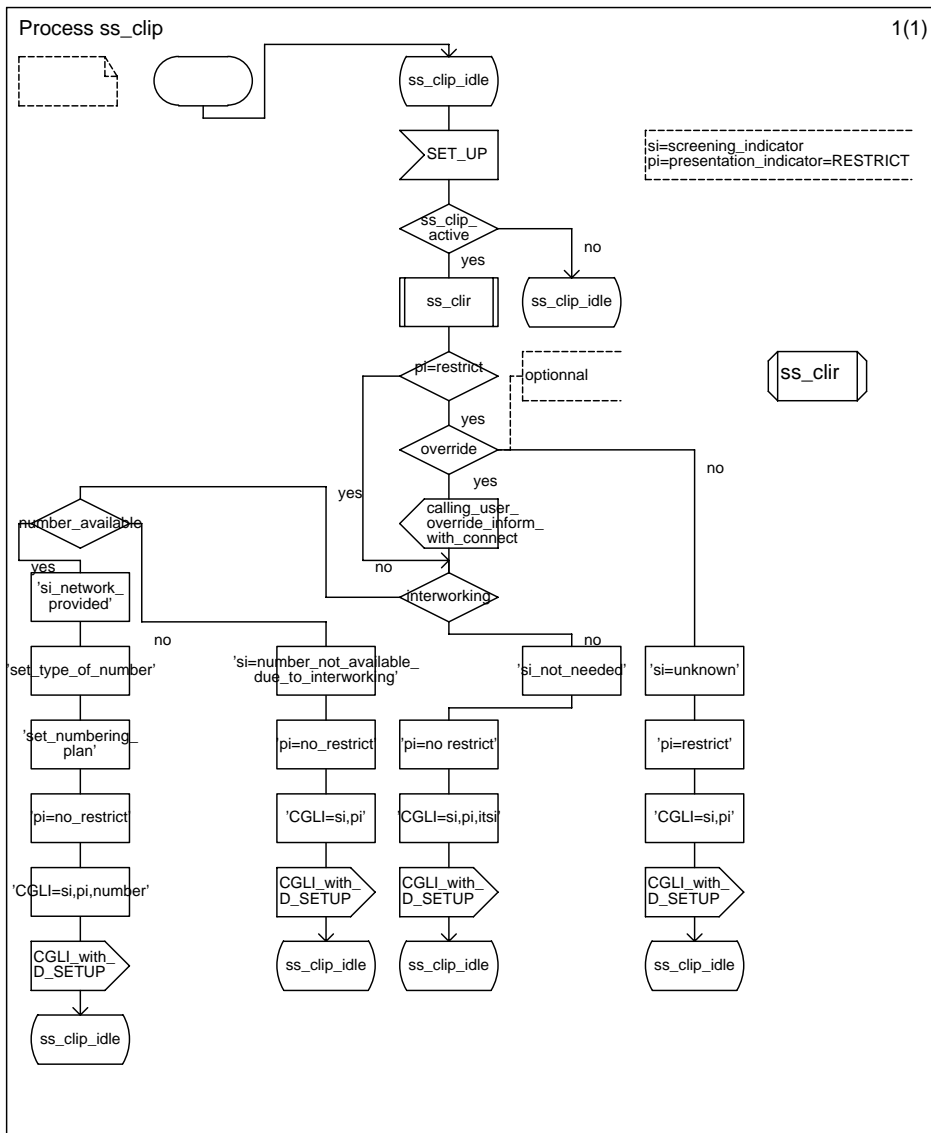
The diagrams in this annex use the Specification and Description Language defined in ITU-T Recommendation Z.100 [10].

### B.1 SDL representation of SS-CLIP at the terminating SwMI

Figure B.1 shows the behaviour of an SS-CLIP supplementary service control entity within terminating SwMI.

Input signals from the right and output signals to the right represent air interface messages.

Input signals from the left and output signals to the left represent primitives to/from the user.



- NOTE 1: The indication CGLI-with--D-SETUP corresponds to the INFORM1 PDU.
- NOTE 2: In the case of override, the indication calling-user-override-inform with-connect corresponds to the INFORM2 flow.
- NOTE 3: In the case of override and not shown in this figure to keep readability an indication INFORM3 may be added to indicate that presentation of CGLI is due to override.

Figure B.1: SS-CLIP Process at Terminating SwMI

## B.2 SDL representation of SS-CLIR procedure

Figure B.2 shows the behaviour of the SS-CLIR supplementary service SDL procedure.

Input signals from the right and output signals to the right represent air interface messages.

Input signals from the left and output signals to the left represent primitives to/from the calling user.

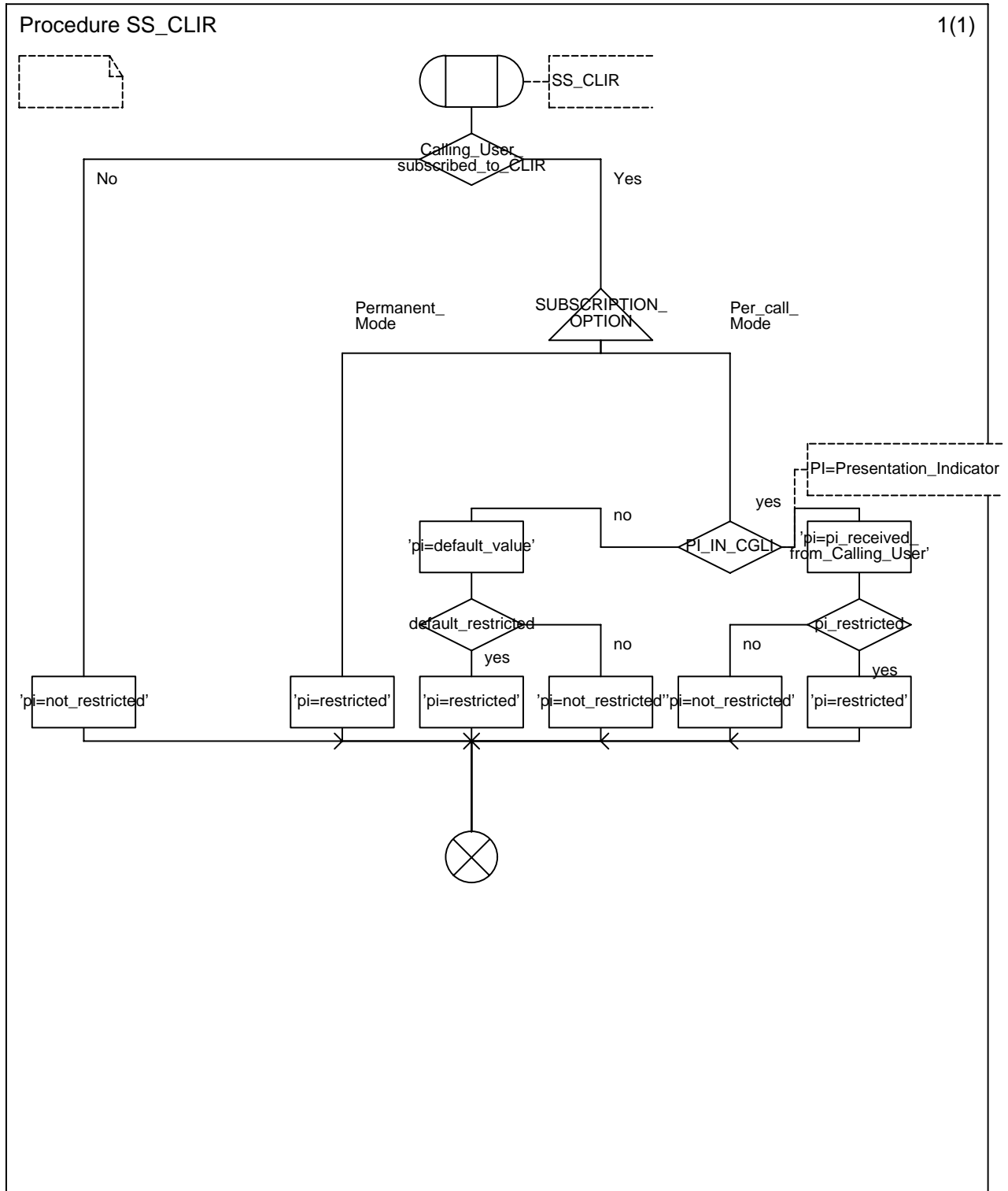
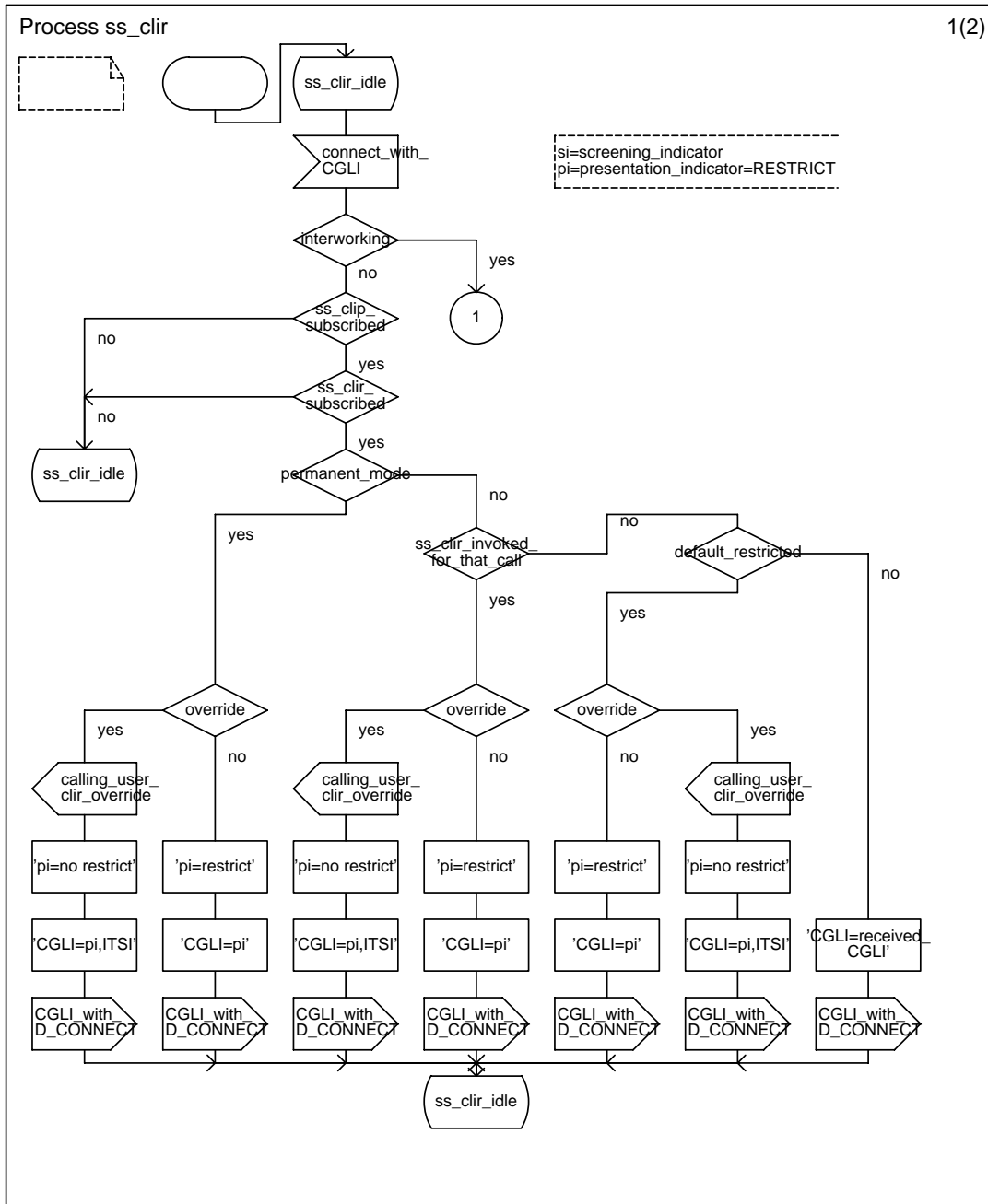


Figure B.2: SS-CLIR Procedure

### B.3 SDL representation of SS-CLIR at the originating SwMI

Figure B.3 shows the behaviour of an SS-CLIP supplementary service control entity within originating SwMI. Input signals from the right and output signals to the right represent air interface messages.

Input signals from the left and output signals to the left represent primitives to/from the monitoring user.



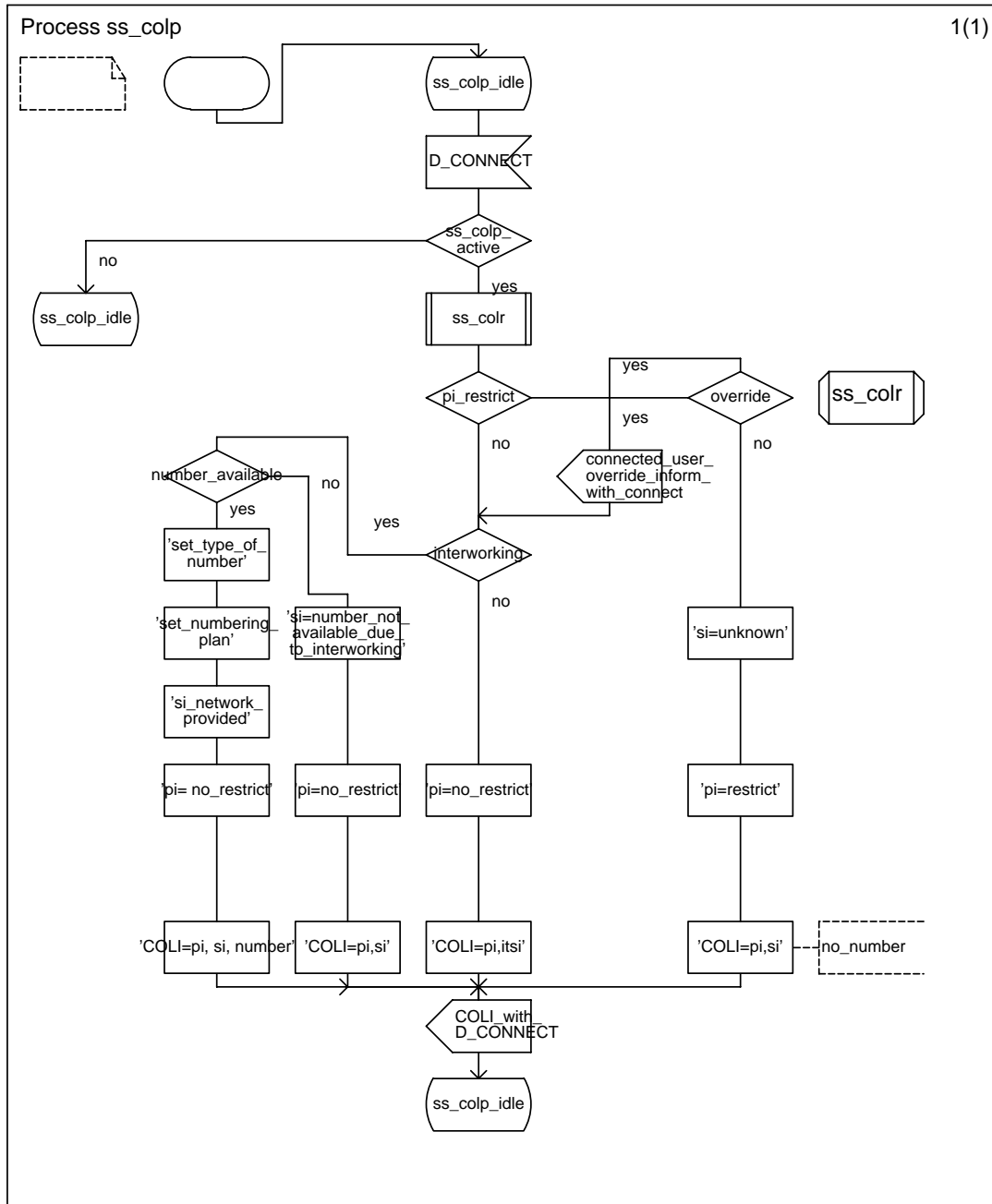
- NOTE 1: The indication CGLI-with-D-SETUP corresponds to the INFORM1 PDU.
- NOTE 2: In the case of override, the indication calling-user-override-inform with connect corresponds to the INFORM2 flow.
- NOTE 3: In the case of override and not shown in this figure to keep readability an indication INFORM3 should be added to indicate that presentation of CGLI is due to override.

**Figure B.3: SS-CLIR SDL Process at the originating SwMI**

### B.4 SDL representation of SS-COLP at the originating SwMI

Figure B.4 shows the behaviour of an SS-COLP supplementary service control entity within originating SwMI. Input signals from the right and output signals to the right represent air interface messages.

Input signals from the left and output signals to the left represent primitives to/from the user.



- NOTE 1: The indication COLI-with-D-CONNECT corresponds to the INFORM4 PDU.
- NOTE 2: In the case of override, the indication connected-user-override-inform with connect corresponds to the INFORM5 flow.
- NOTE 3: In the case of override and not shown in this figure to keep readability an indication INFORM6 should be added to indicate that presentation of COLI is due to override.

**Figure B.4: SS-COLP Process at Originating SwMI**

### B.5 SDL representation of SS-COLR procedure

Figure B.5 shows the behaviour of an SS-COLR supplementary service control entity within originating SwMI. Input signals from the right and output signals to the right represent air interface messages.

Input signals from the left and output signals to the left represent primitives to/from the user.

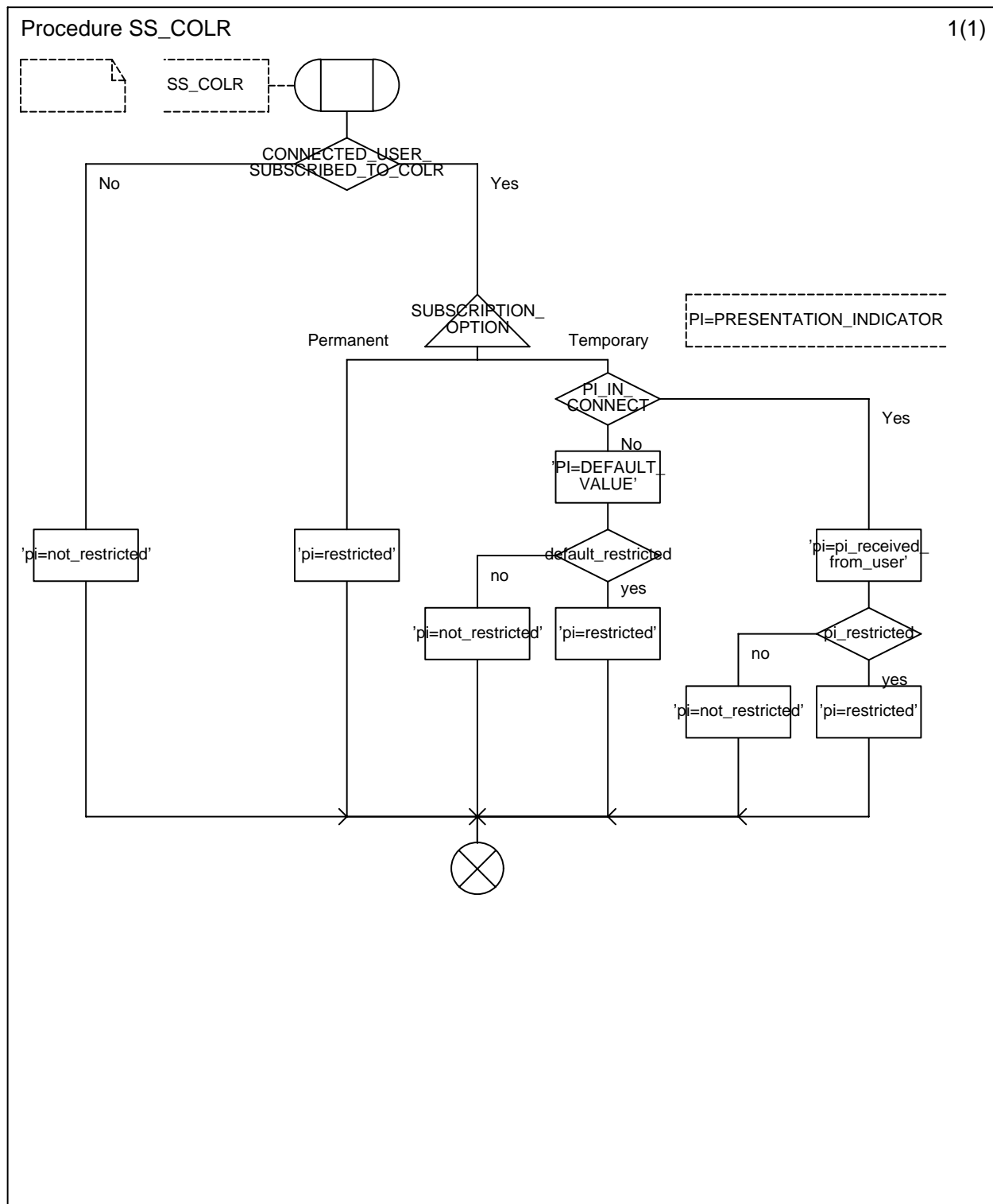
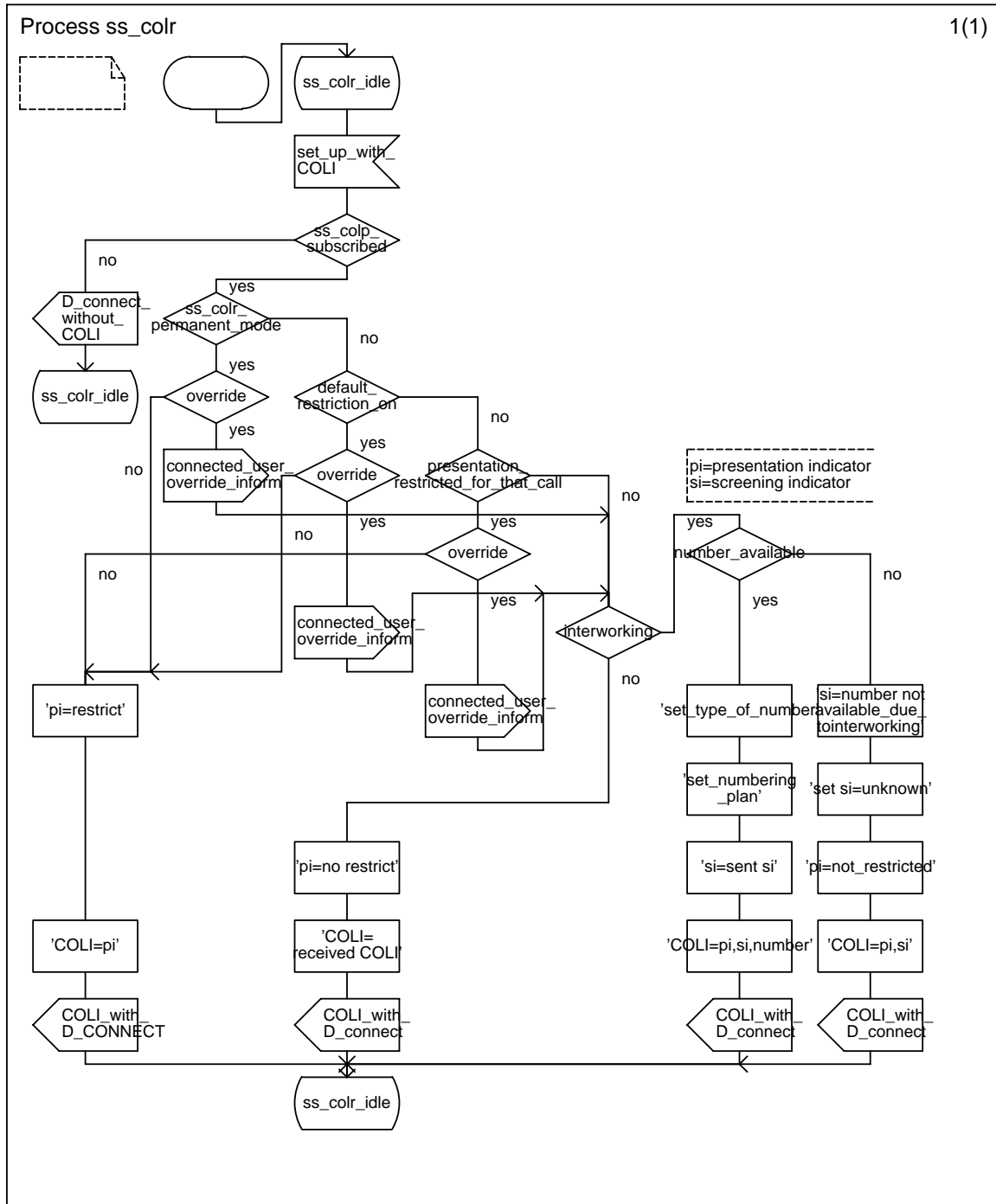


Figure B.5: SS-COLR Procedure

### B.6 SDL representation of SS-COLR process at the originating SwMI

Figure B.6 shows the behaviour of an SS-COLR supplementary service control entity within originating SwMI. Input signals from the right and output signals to the right represent air interface messages. Input signals from the left and output signals to the left represent primitives to/from the user.

Input signals from the left and output signals to the left represent primitives to/from the user.



- NOTE 1: The indication COLI-with-D-CONNECT corresponds to the INFORM4 PDU.
- NOTE 2: In the case of override, the indication connected-user-override-inform with connect corresponds to the INFORM5 flow.
- NOTE 3: In the case of override and not shown in this figure to keep readability an indication INFORM6 should be added to indicate that presentation of COLI is due to override.

Figure B.6: SS-COLR Process at Terminating SwMI

## History

Document history	
December 1998	Public Enquiry PE 9914: 1998-12-04 to 1999-04-02