



EUROPEAN
TELECOMMUNICATION
STANDARD

DRAFT
pr **ETS 300 294**

September 1996

Third Edition

Source: EBU/CENELEC/ETSI-JTC

Reference: RE/JTC-00WSS-1

ICS: 33.020

Key words: Wide screen, signalling, analogue, TV

European Broadcasting Union



Union Européenne de Radio-Télévision

**Television Systems;
625-line television
Wide Screen Signalling (WSS)**

ETSI

European Telecommunications Standards Institute

ETSI Secretariat

Postal address: F-06921 Sophia Antipolis CEDEX - FRANCE

Office address: 650 Route des Lucioles - Sophia Antipolis - Valbonne - FRANCE

X.400: c=fr, a=atlas, p=etsi, s=secretariat - **Internet:** secretariat@etsi.fr

Tel.: +33 92 94 42 00 - Fax: +33 93 65 47 16

Copyright Notification: No part may be reproduced except as authorized by written permission. The copyright and the foregoing restriction extend to reproduction in all media.

© European Telecommunications Standards Institute 1996.
© European Broadcasting Union 1996.
All rights reserved.

Contents

Foreword	5
Introduction	5
1 Scope	7
2 Normative reference.....	7
3 Definition, symbols and abbreviations	7
3.1 Definition	7
3.2 Symbols and abbreviations.....	7
4 Requirements	8
4.1 Line code	8
4.1.1 Position.....	8
4.1.2 Clock frequency.....	8
4.1.3 Pulse shape.....	9
4.1.4 Signal amplitude	9
4.1.5 Modulation coding	9
4.1.6 Preamble	10
4.1.7 Data bits	10
4.1.8 Odd parity bit	10
4.2 Information content of data bits	12
4.2.1 Data group 1.....	12
4.2.1.1 Aspect ratio.....	12
4.2.2 Data group 2, enhanced services.....	13
4.2.2.1 Film bit	13
4.2.2.2 Colour coding bit.....	13
4.2.2.3 Helper bit	13
4.2.2.4 Bit b ₇	14
4.2.3 Data group 3, subtitles	14
4.2.3.1 Subtitles within Teletext bit	14
4.2.3.2 Subtitling mode	14
4.2.4 Data group 4, others.....	15
4.2.4.1 Surround sound bit	15
4.2.4.2 Copyright information.....	15
Annex A (informative): Rules of operation	16
A.1 Receiver display formats	16
A.2 Subtitling.....	17
A.3 Procedure in absence of signalling	17
Annex B (informative): Recommendations	18
B.1 Low pass pre-filtering	18
B.2 Response time on a change in the received signalling information	18
History.....	19

Blank page

Foreword

This 3rd draft European Telecommunication Standard (ETS) has been produced by the Joint Technical Committee (JTC) of the European Broadcasting Union (EBU), Comité Européen de Normalisation ELECTrotechnique (CENELEC) and the European Telecommunications Standards Institute (ETSI) and is now submitted for the Public Enquiry phase of the ETSI standards approval procedure.

NOTE: The EBU/ETSI JTC was established in 1990 to co-ordinate the drafting of ETSs in the specific field of broadcasting and related fields. Since 1995 the JTC became a tripartite body by including in the Memorandum of Understanding also CENELEC, which is responsible for the standardization of radio and television receivers. The EBU is a professional association of broadcasting organizations whose work includes the co-ordination of its Members' activities in the technical, legal, programme-making and programme-exchange domains. The EBU has Active Members in about 60 countries in the European Broadcasting Area; its headquarters is in Geneva *.

* European Broadcasting Union
Code Postal 67
CH-1218 GRAND SACONNEX (Geneva)
Switzerland

Tel: +41 22 717 21 11
Fax: +41 22 717 24 81

Proposed transposition dates	
Date of latest announcement of this ETS (doa):	3 months after ETSI publication
Date of latest publication of new National Standard or endorsement of this ETS (dop/e):	6 months after doa
Date of withdrawal of any conflicting National Standard (dow):	6 months after doa

Introduction

For a smooth introduction of new television services with a 16:9 display aspect ratio in PAL and SECAM standards, it is necessary to signal the aspect ratio used together with some switching information to the television receiver. The receiver should be capable of reacting automatically to this information by displaying the video information in a specified aspect ratio. This signalling is to be considered separately from the type of system used, but it should allow transmission of system related switching information as well.

This ETS permits the later allocation of additional switching information, related to the introduction of enhanced television services.

This ETS is applicable for 625-line PAL and SECAM television systems, but there is potential to adopt it to other standards as well.

Blank page

1 Scope

This European Telecommunication Standard (ETS) is applicable to 625-line PAL and SECAM systems in use, in case, where wide screen signalling is required by the broadcasters.

It specifies the wide screen signalling information, the coding and the way of incorporating the coded information into a 625-line system.

The wide screen signalling information contains information on the aspect ratio range of the transmitted signal and its position, on the position of the subtitles and on the camera/film mode. Furthermore signalling for EDTV and for surround sound is included. Some bits are reserved for future use.

This ETS specifies the transmitted signal. Annex A gives the rules of operation for the minimum requirements for receiver display formats as well as for subtitling. Annex B gives recommendations.

2 Normative reference

This ETS incorporates by dated and undated reference, provisions from other publications. This normative reference is cited at the appropriate places in the text and the publication is listed hereafter. For dated references, subsequent amendments to or revisions of any of these publications apply to this ETS only when incorporated in it by amendment or revision. For undated references the latest edition of the publication referred to applies.

- [1] EBU Recommendation R62 (1990): "Recommendation dominant field for 625-line 50 Hz processing".

3 Definition, symbols and abbreviations

3.1 Definition

For the purposes of this ETS, the following definition applies:

letterbox operation: Is the use of a picture format with an aspect ratio greater than 1,33, in such a way that empty (black) lines are added to conform to a 4:3 transmission format.

3.2 Symbols and abbreviations

For the purposes of this ETS, the following symbols and abbreviations apply:

0_h	falling sync edge
a	aspect ratio
EDTV	Enhanced Definition TeleVision
F_s	clock frequency
LSB	Least Significant Bit
MSB	Most Significant Bit
NRZ	Non-Return-to-Zero
PAL	Phase Alternation Line (Colour TV-System)
SECAM	Sequentielle Couleur Avec Memoire (French Colour-TV System)
T_d	data bit period
T_s	sampling period
WSS	Wide Screen Signalling

4 Requirements

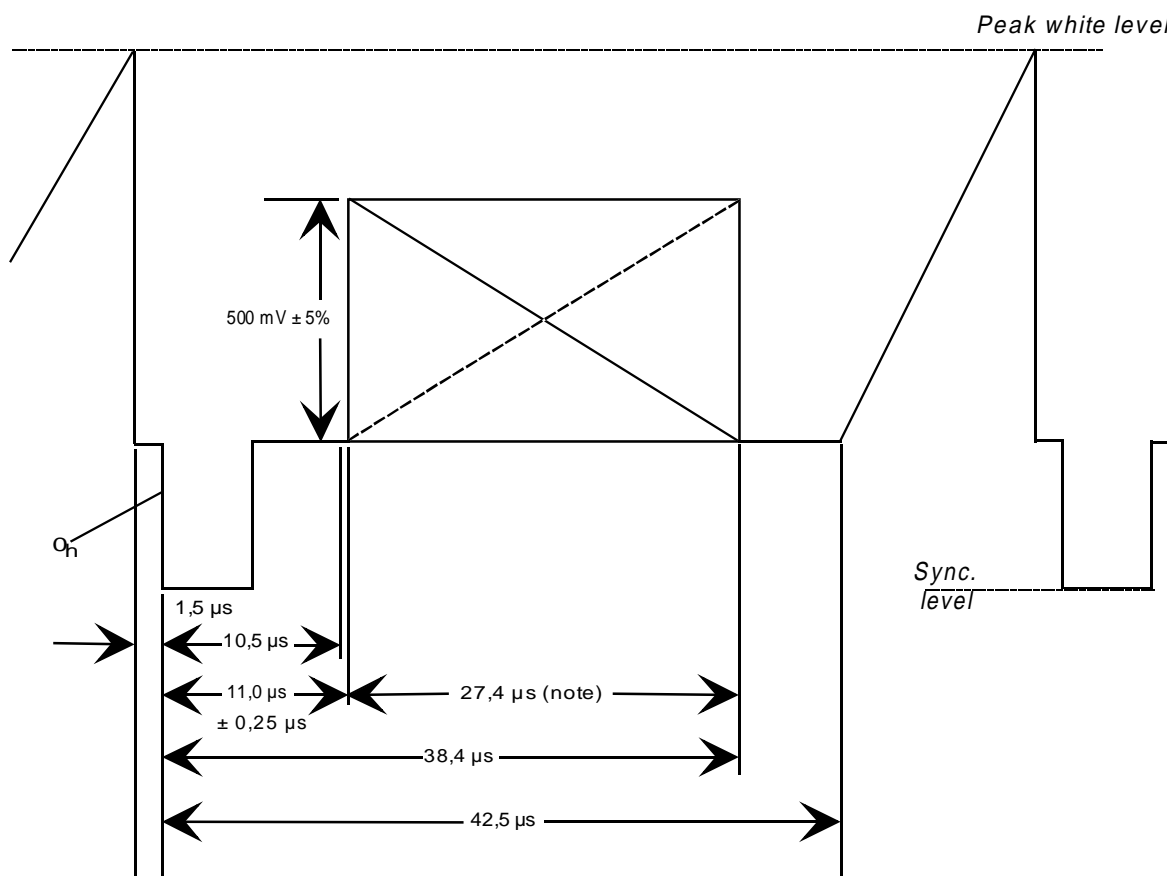
4.1 Line code

The following subclauses specify the line code of the Wide Screen Signalling (WSS).

4.1.1 Position

The signalling bits shall be transmitted as a data burst in the first part of line 23.

The position of the beginning of the Wide Screen Signalling bits shall be $11,0 \pm 0,25 \mu\text{s}$ from 0_h of the horizontal sync, as indicated in figure 1. This figure is intended to illustrate the position of the signalling bits in line 23. For the purpose of commonality between PAL and SECAM, the colour burst and chrominance sub-carrier are not shown.



NOTE: For optimum decoder performance, it is recommended that this period is free from other signals.

Figure 1: Position of status bit signalling in line 23

In each frame line 23 shall be occupied with the WSS.

4.1.2 Clock frequency

The clock frequency shall be:

$$F_s = 5 \text{ MHz} (\pm 1 \times 10^{-4});$$

The period shall be:

$$T_s = 200 \text{ ns}.$$

4.1.3 Pulse shape

The pulse shaping function $h(\tau)$ shall be approximately a sine square:

$$h(\tau) \approx \begin{cases} \frac{2}{T_2} \sin^2\left(\frac{\pi\tau}{2T_s} + \frac{\pi}{2}\right) & |\tau| \leq T_s \\ 0 & \text{elsewhere} \end{cases}$$

The half amplitude pulse duration shall be: 200 ns ± 10 ns.

4.1.4 Signal amplitude

The signal amplitude with respect to a maximum video signal amplitude of 700 mV shall be:

$$0,5 V \pm 5 \%$$

4.1.5 Modulation coding

Bi-phase coding shall be used in accordance with figure 2.

Duration of one data bit:

T_d

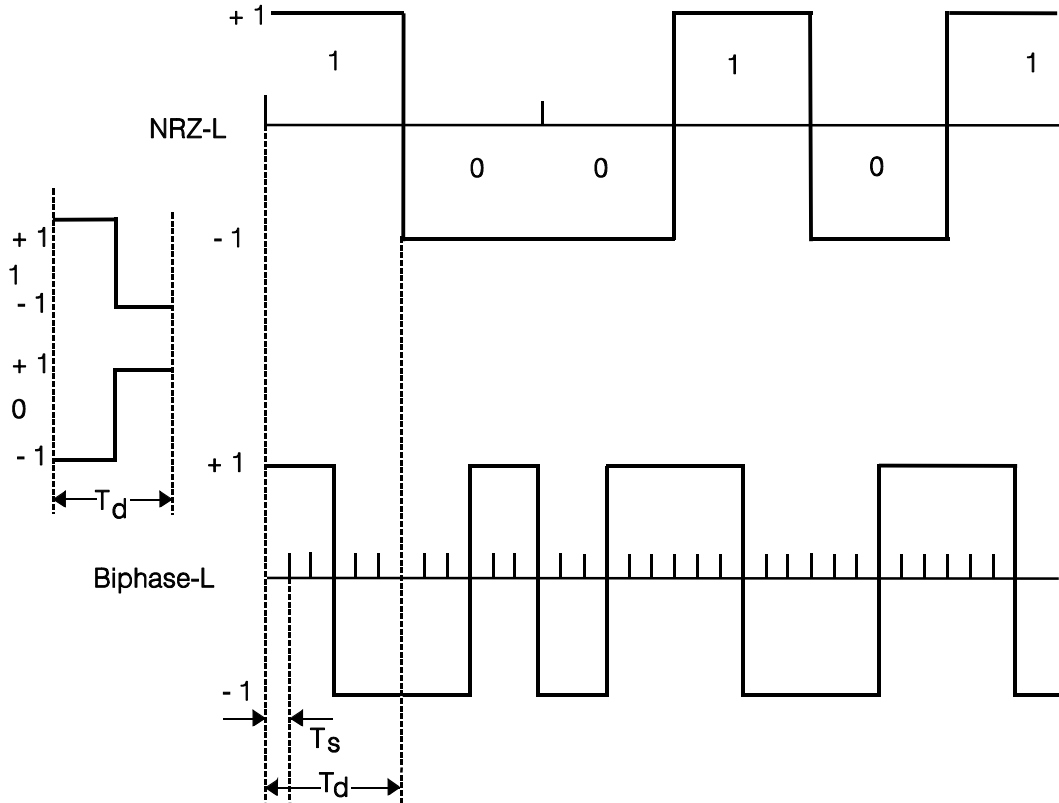


Figure 2: Example of bi-phase-L coding

The data bits shall be inserted in bi-phase-L, in which one data bit period equals 2×3 clock periods, whereby:

$$T_d = 6T_s$$

4.1.6 Preamble

The preamble contains a run-in and a start code. The preamble shall be in accordance with table 1.

4.1.7 Data bits

There shall be 14 bits in total. 1 out of these 14 bits shall be allocated to the error detection code. There shall be 13 data-bits available for transmission of information. The data bits shall be grouped in 4 data groups, see table 1.

4.1.8 Odd parity bit

For error detection, an odd parity bit has been introduced. The odd parity bit shall belong to the first 3 data bits only, see table 1.

Table 1: Status bits transmission scheme

Status bits transmission					
Insertion: First half of line 23		Coding: Bi-phase modulation coding		Clock: 5 MHz ($T_S = 200 \text{ ns}$)	
run-in	Start code	group 1 Aspect Ratio	group 2 Enhanced Services	group 3 Subtitles	group 4 Others
29 elements based on 5 MHz	24 elements based on 5 MHz	24 elements based on 5 MHz	24 elements based on 5 MHz	18 elements based on 5 MHz	18 elements based on 5 MHz
	bit numbering 0 1 2 3 LSB MSB per info bit (note) "0" = 000 111 "1" = 111 000	bit numbering 4 5 6 7 LSB MSB per info bit (note) "0" = 000 111 "1" = 111 000	bit numbering 8 9 10 LSB MSB per info bit (note) "0" = 000 111 "1" = 111 000	bit numbering 11 12 13 LSB MSB per info bit (note) "0" = 000 111 "1" = 111 000	bit numbering 14 15 16 17 LSB MSB per info bit (note) "0" = 000 111 "1" = 111 000
MSB transmitted first	MSB transmitted first	LSB transmitted first	LSB transmitted first	LSB transmitted first	LSB transmitted first
0 x 1F1C 71C7 1 1111 0001 1100 0111 0001 1100 0111 MSB LSB	0 x 1E 3C1F 0001 1110 0011 1100 0001 1111 MSB LSB	0123 0001 1000 0100 1101 0010 1011 0111 1110 b ₃ =	4 0 1 5 0 1 6 0 1 b ₇ = Should be set to "0"	8 0 1 9 10 0 0 1 0 0 1 1 1	11 0 1 12 0 1 13 0 1
		bit number full format 4:3 box 14:9 Centre box 14:9 Top box 16:9 Centre box 16:9 Top box > 16:9 Centre full format 4:3 (shoot and protect 14:9 Centre)	bit number Camera mode Film mode standard coding Motion Adaptive Colour Plus no helper modulated helper Reserved Should be set to "0"	bit number no subtitles within Teletext subtitles within Teletext bit number no open subtitles subtitles in active image area subtitles out of active image area reserved	bit number no surround sound information surround sound mode bit number no copy right asserted or status unknown copy right asserted bit number copying not restricted copying restricted
NOTE: One info bit consists of 6 elements based on 5 MHz clock. $T_d = 6T_S$ (see subclauses 3.2 and 4.1.5)					

4.2 Information content of data bits

The 13 data bits shall be grouped in 4 groups.

Group 1 shall contain 4 bits in which the first 3 bits carry data and the last bit shall denote the odd parity bit over the first three data bits. Group 2 shall contain 4 data bits, group 3 shall contain 3 data bits and group 4 shall contain 3 data bits.

The data bits shall be labelled b_0 up to and including b_2 combined with b_4 up to and including b_{13} . b_3 shall be the odd parity bit as is shown in tables 1 and 2. The index also indicates the order of transmission: b_0 shall be the first transmitted bit.

4.2.1 Data group 1

4.2.1.1 Aspect ratio

b_0, b_1, b_2 : shall denote the aspect ratio label, the letterbox format and position according to table 2.

b_3 : shall denote the odd parity of b_0, b_1, b_2, b_3 according to table 2.

Table 2: Aspect ratio label, letterbox and position code

$b_0b_1b_2$	b_3	Aspect ratio label	Full format or Letterbox	Position	No. of active lines (note 1)
0 0 0	1	4:3	full format	not applicable	576
1 0 0	0	14:9	letterbox	centre	504
0 1 0	0	14:9	letterbox	top	504
1 1 0	1	16:9	letterbox	centre	430
0 0 1	0	16:9	letterbox	top	430
1 0 1	1	>16:9	letterbox	centre	not defined
0 1 1	1	14:9	full format (note 2)	centre	576
1 1 1	0	16:9	full format (anamorphic)	not applicable	576
NOTE 1: The number of active lines is only an indication for the exact aspect ratio $a=1,33$, $a=1,57$ and $a=1,78$.					
NOTE 2: The actual transmitted aspect ratio is 4:3, but a 14:9 centre window should contain all the relevant picture content to encourage a wide screen display on a 16:9 television set.					

The aspect ratio label indicates a range of possible aspect ratio. All aspect ratio's falling in these ranges shall be labelled by the same code. Table 3 indicates the aspect ratio ranges.

Table 3: Aspect ratio ranges

Aspect ratio label	Aspect ratio range	Active lines
4:3	$a \leq 1,46$	527 to 576
14:9	$1,46 < a \leq 1,66$	463 to 526
16:9	$1,66 < a \leq 1,90$	405 to 462
> 16:9	$a > 1,90$	< 405

4.2.2 Data group 2, enhanced services

4.2.2.1 Film bit

b_4 : shall denote the film bit in accordance with table 4.

Table 4: Film bit

b_4	Film bit
0	camera mode (note 1)
1	film mode (notes 2 & 3)
NOTE 1:	Use "camera mode" as default mode.
NOTE 2:	The field dominance shall conform to the EBU Recommendation R62 [1].
NOTE 3:	It is recommended to use the "film mode" in case of still picture transmissions.

4.2.2.2 Colour coding bit

b_5 : shall denote the colour coding bit in accordance with table 5.

Table 5: Colour coding bit

b_5	Colour coding bit
0	standard coding
1	Motion Adaptive Colour Plus (note)
NOTE:	In film mode (bit $b_4 = 1$), Motion Adaptive Colour Plus is set to "fixed" Colour Plus operation, i.e. it is not motion adaptive.

4.2.2.3 Helper bit

b_6 : shall denote the helper bit in accordance with table 6.

Table 6: Helper bit

b_6	Helper bit
0	No helper
1	Modulated helper (note)
NOTE:	A helper signal may be present only when the aspect ratio label is either "16:9 letterbox centre" or "> 16:9 letterbox centre" and the number of active lines ≤ 430 lines.

4.2.2.4 Bit b_7

Bit b_7 : reserved, should be set to "0".

4.2.3 Data group 3, subtitles

4.2.3.1 Subtitles within Teletext bit

b_8 : shall denote the subtitles within Teletext bit in accordance with table 7.

Table 7: Subtitles within Teletext bit

b_8	Subtitles within Teletext bit
0	no subtitles within Teletext
1	subtitles within Teletext

4.2.3.2 Subtitling mode

b_9, b_{10} : shall denote the mode of subtitling in accordance with table 8.

Table 8: Subtitling mode

$b_9 b_{10}$	subtitles in/out of active image area
0 0	no open subtitles
1 0	subtitles in active image area
0 1	subtitles out of active image area
1 1	reserved

NOTE: The "out of active image area" subtitling, which extends into the active image area shall be treated as "out of active image area".

Figure 3 indicates the meaning of the terms "in active image area" and "out of active image area".

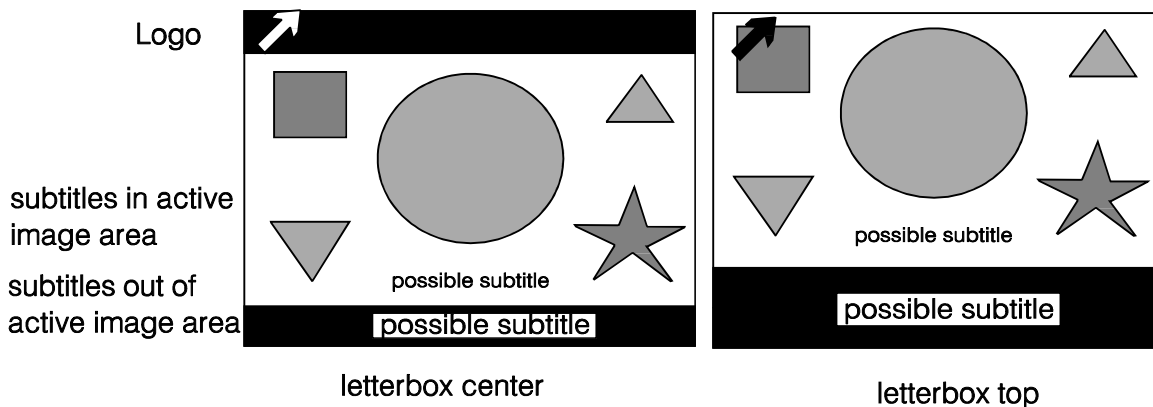


Figure 3: Examples of letterbox signals with logos and subtitling

4.2.4 Data group 4, others

4.2.4.1 Surround sound bit

b_{11} : shall denote the surround sound bit in accordance with table 9.

Table 9: Surround sound bit

b_{11}	Surround sound bit
0	no surround sound information
1	surround sound mode

4.2.4.2 Copyright information

b_{12} , b_{13} : shall denote the copyright bit and generation bit in accordance with table 10.

Table 10: Copyright information

b_{12}	Copyright bit
0	no copyright asserted or status unknown
1	copyright asserted
b_{13}	Generation bit
0	copying not restricted
1	copying restricted

Annex A (informative): Rules of operation

A.1 Receiver display formats

To ensure automatic selection of the most appropriate display mode, the receiver with a 16:9 display should comply with the following minimum requirements:

Table A.1: Aspect ratio minimum requirements

$b_0b_1b_2$	Aspect ratio label	Minimum requirements
0 0 0	4:3	case 1
1 0 0	14:9	case 2
0 1 0	14:9	case 2
1 1 0	16:9	case 3
0 0 1	16:9	case 3
1 0 1	>16:9	case 4

- Case 1: 4:3 Full format: The 4:3 aspect ratio picture should be displayed centred with black bars at the left and right hand side of the display.
- Case 2: Letterbox signalled as 14:9: the 14:9 aspect ratio picture should be displayed using one of the following two methods:
- a) the 14:9 aspect ratio picture should be displayed centred with small bars at the left and right hand sides of the display;
 - b) the 14:9 picture may be displayed filling the full width of the visible screen by incorporating a small horizontal geometrical error, typically 8 %.
- Case 3: Letterbox signalled as 16:9: the 16:9 aspect ratio picture should be displayed using the full width of the screen.
- Case 4: Letterbox signalled as > 16:9: the > 16:9 aspect ratio picture should be displayed using one of the following two methods:
- a) as under case 3;
 - b) the >16:9 picture may be displayed using the full height of the screen, by further zooming in.

It should be noted that the viewer should be free to override the automatically selected display condition.

The speed of the automatic change of aspect ratio is limited mainly by the response time of the deflection circuit.

A.2 Subtitling

When the subtitling of letterboxed pictures is in, or partly in the "out-of active image area", the new 16:9 receivers will lose this information, unless they display the picture in the 4:3 mode. This would mean that on the 16:9 receiver, black bars would be present all around the active image content and this should be avoided.

To serve both the interests of the existing 4:3 and the new 16:9 viewers, it is of great importance, that:

- wide screen programmes should always have the subtitling (whether "in active image area" or "out of active image area") conveyed as well by means of the Teletext service;
- new 16:9 receivers, complying with this ETS, should be equipped with a Teletext decoder and always have the possibility of detecting the Teletext presence bit b_8 .

A.3 Procedure in absence of signalling

In the absence of signalling bits, the receiver should go to a default mode.

Annex B (informative): Recommendations

B.1 Low pass pre-filtering

It is recommended that the received status bit is low pass filtered before decoding.

This low pass filter should preserve the main spectral energy of the status bits signal, which resides in the spectral domain of 0 MHz up to 1,67 MHz.

B.2 Response time on a change in the received signalling information

The maximum response time on a change in the received status bits signalling information is recommended to be: 120 ms.

History

Document history	
November 1994	First Edition
May 1996	Second Edition
September 1996	Public Enquiry PE 114: 1996-09-23 to 1997-01-17