



CORRIGENDUM

ETS 300 207-1

June 1995

Source: ETSI TC-SPS

Reference: T/S 46-33R

ICS: 33.080

Key words: ISDN, supplementary service

**This corrigendum modifies
the European Telecommunication Standard ETS 300 207-1 (1994)**

**Integrated Services Digital Network (ISDN);
Diversion supplementary services;
Digital Subscriber Signalling System No. one (DSS1) protocol;
Part 1: Protocol specification**

ETSI

European Telecommunications Standards Institute

ETSI Secretariat

Postal address: F-06921 Sophia Antipolis CEDEX - FRANCE

Office address: 650 Route des Lucioles - Sophia Antipolis - Valbonne - FRANCE

X.400: c=fr, a=atlas, p=etsi, s=secretariat - **Internet:** secretariat@etsi.fr

Tel.: +33 92 94 42 00 - Fax: +33 93 65 47 16

Copyright Notification: No part may be reproduced except as authorized by written permission. The copyright and the foregoing restriction extend to reproduction in all media.

© European Telecommunications Standards Institute 1995. All rights reserved.

Foreword

This corrigendum corrects several editorial mistakes and inexactitudes in the first edition of ETS 300 207-1.

Amendments

Page 11, clause 5, fourth paragraph

Delete "on a number":

An indication that a call forwarding supplementary service is activated ~~on a number~~ may, as a subscription option, be given to the forwarding user who has forwarding activated, each time an outgoing call is made.

Page 12, table 1, last row

Add "all" to the last subscription option:

Subscription option	Value	Applicability
⋮	⋮	⋮
Activation, deactivation and interrogation for all ISDN-numbers on the same access (in case of subscription on a per ISDN number basis) (note 2)	No	CFU CFB
	Yes	CFNR
⋮	⋮	⋮

Page 13, table 2

Modify table 2 as follows:

Network provider option	Value	Applicability
Served user call retention on invocation of diversion (forwarding or deflection)	Retain call until alerting begins at the diverted-to user	CFNR CD
	Clear call on invocation of diversion	(note 1)
The maximum number of diversions for a single call	Maximum number of diverted connections (with an upper limit of 5)	CFU CFB CFNR CD
Call forwarding on no reply timer	Timer duration shall be a network provider option	CFNR
Partial rerouteing provided at the T reference point (note 2)	Yes	CFU CFB
	No	CFNR CD
The call-by-call indication overrides the value of the subscription option "Diverting number is released to the diverted-to user"	Yes	CD
	No	
NOTE 1:	This option also applies for call diversion by partial rerouting.	
NOTE 2:	Partial rerouteing can be invoked by the private network towards the public network when the CFU, CFB, CFNR or CD supplementary services are invoked in the private network.	

Page 38, subclause 9.2.5.1, note

Modify the note as follows:

NOTE: As a network provider option the prefix is added to the number. In this case the ~~diverted-to-number~~ type of number field of the Redirecting number information element is coded "unknown".

Page 45, subclause 10.6, last paragraph, first sentence

Modify the first sentence as follows:

For invocation and operation of the call ~~forwarding~~ diversion supplementary services at the T reference point, the procedures of subclause 9.2.4 shall apply except that, if the forwarding user has subscribed to the direct dialling in supplementary service the ~~diverting~~ forwarding network shall include the Called party number information element containing the called user's number in the FACILITY message.

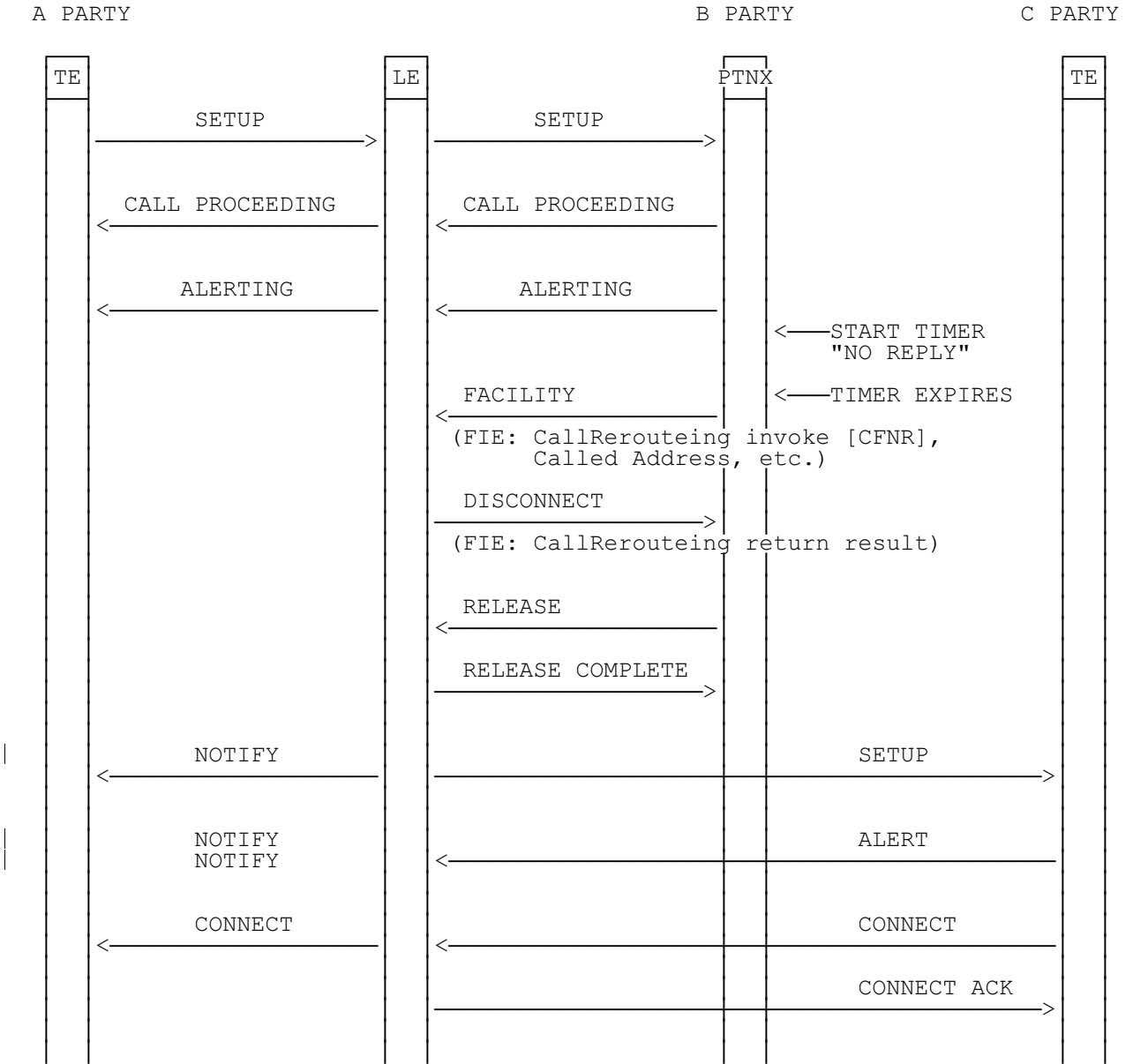
Pages 61 to 68, figure 7 (sheets 1 to 4) and figure 8 (sheets 1 to 4), note

Modify the respective notes as follows:

NOTE: The SDL diagram for the coincident S and T reference point is also applicable at the T reference point (i.e. as referenced in subclause 10.6). with the exception of the SDL diagram for the CD supplementary service.

Page 71, figure A.3

Modify figure A.3 as follows:



History

Document history	
December 1994	First Edition of ETS 300 207-1
June 1995	Corrigendum to First Edition of ETS 300 207-1