



AMENDMENT

ETS 300 097-1

A1

November 1994

Source: ETSI TC-SPS

Reference: RE/SPS-05056

ICS: 33.080

Key words: ISDN, supplementary service

**This amendment A1 modifies
the European Telecommunication Standard ETS 300 097-1 (1992)**

**Integrated Services Digital Network (ISDN);
Connected Line Identification Presentation (COLP)
supplementary service;
Digital Subscriber Signalling System No. one (DSS1) protocol;
Part 1: Protocol specification**

ETSI

European Telecommunications Standards Institute

ETSI Secretariat

Postal address: F-06921 Sophia Antipolis CEDEX - FRANCE

Office address: 650 Route des Lucioles - Sophia Antipolis - Valbonne - FRANCE

X.400: c=fr, a=atlas, p=etsi, s=secretariat - **Internet:** secretariat@etsi.fr

Tel.: +33 92 94 42 00 - Fax: +33 93 65 47 16

Copyright Notification: No part may be reproduced except as authorized by written permission. The copyright and the foregoing restriction extend to reproduction in all media.

© European Telecommunications Standards Institute 1994. All rights reserved.

Foreword

This amendment to ETS 300 097-1 (1992) has been produced by the Signalling Protocols and Switching (SPS) Technical Committee of the European Telecommunications Standards Institute (ETSI).

This amendment changes subclause 9.5.1 of ETS 300 097-1 (1992) to bring it into alignment with the stage 1 description contained in ETS 300 094 (1992) concerning statements on the override option.

In addition, this amendment also contains changes to clause 11 of ETS 300 097-1 (1992) to clarify the treatment of the Connected party subaddress information element in the case of interworking with other (non-ISDN) networks.

| Transposition dates | |
|----------------------------------------------------------------------|------------------|
| Date of latest announcement of this amendment (doa): | 28 February 1995 |
| Date of latest publication or endorsement of this amendment (dop/e): | 31 August 1995 |
| Date of withdrawal of any conflicting National Standard (dow): | 31 August 1995 |

Amendments

Page 16, subclause 9.5.1, 7th paragraph, 8th paragraph and note

Delete:

"If presentation is restricted but the calling user has the "override" category (e.g. police or emergency service) marked in the originating local exchange, the network shall include the Connected number information element, and Connected subaddress information element if the subaddress was supplied by the connected user, in the CONNECT message. In this case, the presentation and screening indicators shall be passed transparently to the calling user.

The numbering plan identifier field shall be coded either as "ISDN/telephony numbering plan (CCITT Recommendations E.164 [4] and E.163 [5])" or "unknown".

NOTE: If the presentation indicator in the Connected number information element received by the user is set to "number not available due to interworking" or "presentation restricted", the remaining information in the Connected number information element should be ignored by the user."

Replace with:

"NOTE 1: If the presentation indicator in the Connected number information element received by the user is set to "number not available due to interworking" or "presentation restricted", the remaining information in the Connected number information element should be ignored by the user.

NOTE 2: Depending on national regulations, some networks may define categories of subscribers that have the ability to override the presentation restriction and have the connected party's ISDN number, and subaddress information (if any) presented (e.g. the police). The ability to override the presentation restriction and the protocol to support such a service is a national matter."

Page 17, clause 11, third paragraph

Delete:

"In this case the network shall send the Connected number information element according to subclause 9.5.1, second paragraph, and shall include the Connected subaddress information element if the connected subaddress is available."

Replace with:

"In this case the network shall, depending on the indication received, either:

- for presentation allowed, send the Connected number information element according to the contents of subclause 9.5.1, second paragraph, and shall include the Connected subaddress information element if the connected subaddress is available; or,
- for presentation restricted, send the Connected number information element according to the contents of subclause 9.5.1, fourth paragraph, and shall not include the Connected subaddress information element."

Page 19, clause 14

Replace figure 4 with the following figure.

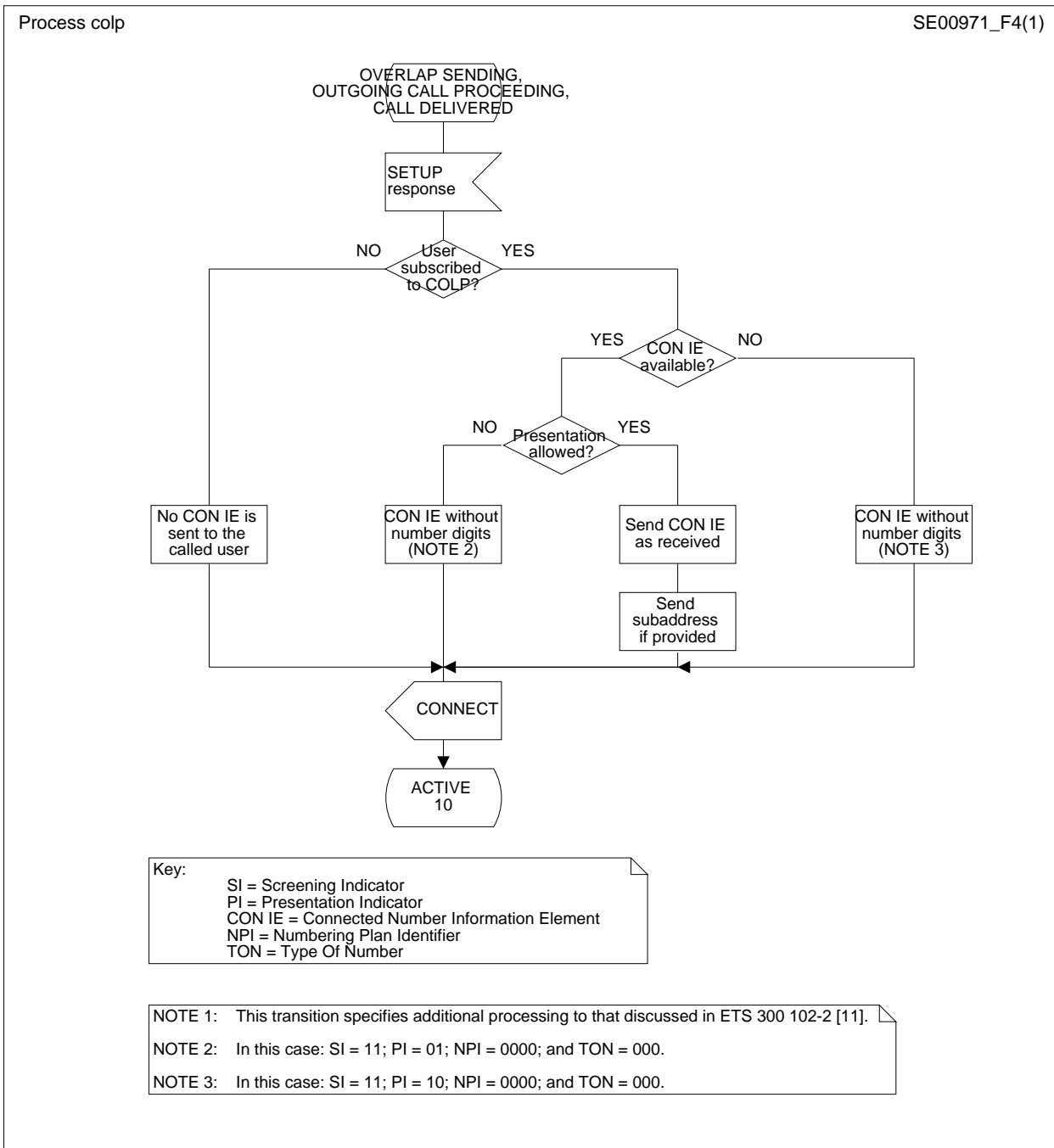


Figure 4: SDL for originating network side dynamic description

History

| Document history | |
|-------------------------|-------------------------------------------------------------|
| May 1992 | First Edition |
| November 1994 | Amendment 1 to First Edition |
| March 1996 | Converted into Adobe Acrobat Portable Document Format (PDF) |
| | |
| | |