



## **Network Functions Virtualisation (NFV) Release 5; Protocols and Data Models; RESTful protocols specification for the Policy Management Interface**

### ***Disclaimer***

The present document has been produced and approved by the Network Functions Virtualisation (NFV) ETSI Industry Specification Group (ISG) and represents the views of those members who participated in this ISG.  
It does not necessarily represent the views of the entire ETSI membership.

---

**Reference**

---

RGS/NFV-SOL012ed531

---

---

**Keywords**

---

API, NFV, policy management

---

**ETSI**

---

650 Route des Lucioles  
F-06921 Sophia Antipolis Cedex - FRANCE

---

Tel.: +33 4 92 94 42 00 Fax: +33 4 93 65 47 16

Siret N° 348 623 562 00017 - APE 7112B  
Association à but non lucratif enregistrée à la  
Sous-Préfecture de Grasse (06) N° w061004871

---

**Important notice**

---

The present document can be downloaded from the  
[ETSI Search & Browse Standards](#) application.

The present document may be made available in electronic versions and/or in print. The content of any electronic and/or print versions of the present document shall not be modified without the prior written authorization of ETSI. In case of any existing or perceived difference in contents between such versions and/or in print, the prevailing version of an ETSI deliverable is the one made publicly available in PDF format on [ETSI deliver](#) repository.

Users should be aware that the present document may be revised or have its status changed,  
this information is available in the [Milestones listing](#).

If you find errors in the present document, please send your comments to  
the relevant service listed under [Committee Support Staff](#).

If you find a security vulnerability in the present document, please report it through our  
[Coordinated Vulnerability Disclosure \(CVD\)](#) program.

---

**Notice of disclaimer & limitation of liability**

---

The information provided in the present deliverable is directed solely to professionals who have the appropriate degree of experience to understand and interpret its content in accordance with generally accepted engineering or other professional standard and applicable regulations.

No recommendation as to products and services or vendors is made or should be implied.

No representation or warranty is made that this deliverable is technically accurate or sufficient or conforms to any law and/or governmental rule and/or regulation and further, no representation or warranty is made of merchantability or fitness for any particular purpose or against infringement of intellectual property rights.

In no event shall ETSI be held liable for loss of profits or any other incidental or consequential damages.

Any software contained in this deliverable is provided "AS IS" with no warranties, express or implied, including but not limited to, the warranties of merchantability, fitness for a particular purpose and non-infringement of intellectual property rights and ETSI shall not be held liable in any event for any damages whatsoever (including, without limitation, damages for loss of profits, business interruption, loss of information, or any other pecuniary loss) arising out of or related to the use of or inability to use the software.

---

**Copyright Notification**

---

No part may be reproduced or utilized in any form or by any means, electronic or mechanical, including photocopying and microfilm except as authorized by written permission of ETSI.

The content of the PDF version shall not be modified without the written authorization of ETSI.

The copyright and the foregoing restriction extend to reproduction in all media.

© ETSI 2025.  
All rights reserved.

# Contents

|  |    |
|--|----|
| Intellectual Property Rights .....                                 | 6  |
| Foreword.....  | 6  |
| Modal verbs terminology.....                                       | 6  |
| 1     Scope .....  | 7  |
| 2     References .....   | 7  |
| 2.1     Normative references .....                                 | 7  |
| 2.2     Informative references.....                                | 8  |
| 3     Definition of terms, symbols and abbreviations.....          | 8  |
| 3.1     Terms.....   | 8  |
| 3.2     Symbols.....   | 8  |
| 3.3     Abbreviations .....  | 8  |
| 4     General aspects.....   | 8  |
| 4.1     Overview .....   | 8  |
| 4.2     Common data types .....                                    | 9  |
| 5     Policy Management interface .....                            | 9  |
| 5.1     Description .....  | 9  |
| 5.2     API version.....   | 10 |
| 5.3     Resource structure and method .....                        | 10 |
| 5.4     Sequence diagrams (informative).....                       | 11 |
| 5.4.1     Flow of creating a policy .....                          | 11 |
| 5.4.2     Flow of transferring a policy.....                       | 12 |
| 5.4.3     Flow of querying/reading policies .....                  | 13 |
| 5.4.4     Flow of fetching the content of a policy .....           | 13 |
| 5.4.5     Flow of modifying a policy .....                         | 14 |
| 5.4.6     Flow of deleting a policy .....                          | 15 |
| 5.4.7     Flow of managing subscriptions .....                     | 16 |
| 5.4.8     Flow of sending notifications.....                       | 17 |
| 5.5     Resources .....  | 18 |
| 5.5.1     Introduction.....  | 18 |
| 5.5.2     Resource: API versions.....                              | 18 |
| 5.5.3     Resource: Policies.....                                  | 18 |
| 5.5.3.1     Description .....                                      | 18 |
| 5.5.3.2     Resource definition .....                              | 18 |
| 5.5.3.3     Resource methods .....                                 | 18 |
| 5.5.3.3.1     POST .....   | 18 |
| 5.5.3.3.2     GET .....  | 19 |
| 5.5.3.3.3     PUT .....  | 20 |
| 5.5.3.3.4     PATCH.....   | 20 |
| 5.5.3.3.5     DELETE.....  | 20 |
| 5.5.4     Resource: Individual policy .....                        | 21 |
| 5.5.4.1     Description .....                                      | 21 |
| 5.5.4.2     Resource definition .....                              | 21 |
| 5.5.4.3     Resource methods .....                                 | 21 |
| 5.5.4.3.1     POST .....   | 21 |
| 5.5.4.3.2     GET .....  | 21 |
| 5.5.4.3.3     PUT .....  | 22 |
| 5.5.4.3.4     PATCH.....   | 22 |
| 5.5.4.3.5     DELETE.....  | 22 |
| 5.5.5     Resource: Selected version of an individual policy ..... | 23 |
| 5.5.5.1     Description .....                                      | 23 |
| 5.5.5.2     Resource definition .....                              | 23 |
| 5.5.5.3     Resource methods .....                                 | 24 |
| 5.5.5.3.1     POST .....   | 24 |
| 5.5.5.3.2     GET .....  | 24 |

|           |  |    |
|-----------|--|----|
| 5.5.5.3.3 | PUT .....  | 24 |
| 5.5.5.3.4 | PATCH.....   | 25 |
| 5.5.5.3.5 | DELETE.....  | 25 |
| 5.5.6     | Resource: Particular version of an individual policy ..... | 25 |
| 5.5.6.1   | Description .....  | 25 |
| 5.5.6.2   | Resource definition .....                                  | 25 |
| 5.5.6.3   | Resource methods .....                                     | 25 |
| 5.5.6.3.1 | POST .....   | 25 |
| 5.5.6.3.2 | GET .....  | 25 |
| 5.5.6.3.3 | PUT .....  | 26 |
| 5.5.6.3.4 | PATCH.....   | 27 |
| 5.5.6.3.5 | DELETE.....  | 27 |
| 5.5.7     | Resource: Subscriptions.....                               | 28 |
| 5.5.7.1   | Description .....  | 28 |
| 5.5.7.2   | Resource definition .....                                  | 28 |
| 5.5.7.3   | Resource methods .....                                     | 28 |
| 5.5.7.3.1 | POST .....   | 28 |
| 5.5.7.3.2 | GET .....  | 30 |
| 5.5.7.3.3 | PUT .....  | 31 |
| 5.5.7.3.4 | PATCH.....   | 31 |
| 5.5.7.3.5 | DELETE.....  | 31 |
| 5.5.8     | Resource: Individual subscription.....                     | 31 |
| 5.5.8.1   | Description .....  | 31 |
| 5.5.8.2   | Resource definition .....                                  | 31 |
| 5.5.8.3   | Resource methods .....                                     | 31 |
| 5.5.8.3.1 | POST .....   | 31 |
| 5.5.8.3.2 | GET .....  | 32 |
| 5.5.8.3.3 | PUT .....  | 32 |
| 5.5.8.3.4 | PATCH.....   | 32 |
| 5.5.8.3.5 | DELETE.....  | 32 |
| 5.5.9     | Resource: Notification endpoint .....                      | 33 |
| 5.5.9.1   | Description .....  | 33 |
| 5.5.9.2   | Resource definition .....                                  | 33 |
| 5.5.9.3   | Resource methods .....                                     | 33 |
| 5.5.9.3.1 | POST .....   | 33 |
| 5.5.9.3.2 | GET .....  | 34 |
| 5.5.9.3.3 | PUT .....  | 34 |
| 5.5.9.3.4 | PATCH.....   | 34 |
| 5.5.9.3.5 | DELETE.....  | 34 |
| 5.6       | Data model .....   | 35 |
| 5.6.1     | Introduction.....  | 35 |
| 5.6.2     | Resource and notification data types .....                 | 35 |
| 5.6.2.1   | Introduction .....   | 35 |
| 5.6.2.2   | Type: CreatePolicyRequest .....                            | 35 |
| 5.6.2.3   | Type: Policy .....   | 36 |
| 5.6.2.4   | Type: PolicyModifications.....                             | 37 |
| 5.6.2.5   | Type: PolicySubscriptionRequest .....                      | 37 |
| 5.6.2.6   | Type: PolicySubscription .....                             | 38 |
| 5.6.2.7   | Type: PolicyChangeNotification.....                        | 38 |
| 5.6.2.8   | Type: PolicyConflictNotification.....                      | 39 |
| 5.6.3     | Referenced structured data types .....                     | 39 |
| 5.6.3.1   | Introduction.....  | 39 |
| 5.6.3.2   | Type: PolicyNotificationsFilter.....                       | 39 |
| 5.6.4     | Referenced simple data types and enumerations .....        | 40 |
| 5.6.4.1   | Introduction .....   | 40 |
| 5.6.4.2   | Simple data types .....                                    | 40 |
| 5.6.4.3   | Enumeration: ActivationStatus .....                        | 40 |
| 5.6.4.4   | Enumeration: TransferStatus.....                           | 40 |
| 5.6.4.5   | Enumeration: PolicyOperationType.....                      | 40 |
| 5.7       | Policy management state model and error handling .....     | 41 |
| 5.7.1     | Introduction.....  | 41 |
| 5.7.2     | States and state transitions .....                         | 41 |

|                               |   |           |
|-------------------------------|---|-----------|
| 5.7.3                         | Handling of errors.....                                 | 43        |
| 5.7.3.1                       | Failure during transfer of the policy content .....     | 43        |
| <b>Annex A (informative):</b> | <b>Mapping operations to protocol elements.....</b>     | <b>44</b> |
| <b>Annex B (normative):</b>   | <b>Authorization scope values .....</b>                 | <b>45</b> |
| B.1                           | Overview .....  | 45        |
| B.2                           | Policy Management interface .....                       | 45        |
| <b>Annex C (informative):</b> | <b>Complementary material for API utilization .....</b> | <b>47</b> |
| <b>Annex D (informative):</b> | <b>Change history .....</b>                             | <b>48</b> |
| History                       | .....   | 49        |

---

# Intellectual Property Rights

## Essential patents

IPRs essential or potentially essential to normative deliverables may have been declared to ETSI. The declarations pertaining to these essential IPRs, if any, are publicly available for **ETSI members and non-members**, and can be found in ETSI SR 000 314: *"Intellectual Property Rights (IPRs); Essential, or potentially Essential, IPRs notified to ETSI in respect of ETSI standards"*, which is available from the ETSI Secretariat. Latest updates are available on the [ETSI IPR online database](#).

Pursuant to the ETSI Directives including the ETSI IPR Policy, no investigation regarding the essentiality of IPRs, including IPR searches, has been carried out by ETSI. No guarantee can be given as to the existence of other IPRs not referenced in ETSI SR 000 314 (or the updates on the ETSI Web server) which are, or may be, or may become, essential to the present document.

## Trademarks

The present document may include trademarks and/or tradenames which are asserted and/or registered by their owners. ETSI claims no ownership of these except for any which are indicated as being the property of ETSI, and conveys no right to use or reproduce any trademark and/or tradename. Mention of those trademarks in the present document does not constitute an endorsement by ETSI of products, services or organizations associated with those trademarks.

**DECT™**, **PLUGTESTS™**, **UMTS™** and the ETSI logo are trademarks of ETSI registered for the benefit of its Members. **3GPP™**, **LTE™** and **5G™** logo are trademarks of ETSI registered for the benefit of its Members and of the 3GPP Organizational Partners. **oneM2M™** logo is a trademark of ETSI registered for the benefit of its Members and of the oneM2M Partners. **GSM®** and the GSM logo are trademarks registered and owned by the GSM Association.

---

# Foreword

This Group Specification (GS) has been produced by ETSI Industry Specification Group (ISG) Network Functions Virtualisation (NFV).

---

# Modal verbs terminology

In the present document "**shall**", "**shall not**", "**should**", "**should not**", "**may**", "**need not**", "**will**", "**will not**", "**can**" and "**cannot**" are to be interpreted as described in clause 3.2 of the [ETSI Drafting Rules](#) (Verbal forms for the expression of provisions).

"**must**" and "**must not**" are **NOT** allowed in ETSI deliverables except when used in direct citation.

---

# 1 Scope

The present document specifies a RESTful protocol and data model fulfilling the requirements specified in the following Group Specifications for the policy management interfaces used over the NFV-MANO reference points:

- ETSI GS NFV-IFA 005 [1]
- ETSI GS NFV-IFA 006 [2]
- ETSI GS NFV-IFA 007 [3]
- ETSI GS NFV-IFA 008 [4]
- ETSI GS NFV-IFA 013 [5]
- ETSI GS NFV-IFA 030 [6]

A data model for policy content is out of scope of the present document.

---

## 2 References

### 2.1 Normative references

References are either specific (identified by date of publication and/or edition number or version number) or non-specific. For specific references, only the cited version applies. For non-specific references, the latest version of the referenced document (including any amendments) applies.

Referenced documents which are not found to be publicly available in the expected location might be found in the [ETSI docbox](#).

NOTE: While any hyperlinks included in this clause were valid at the time of publication, ETSI cannot guarantee their long term validity.

The following referenced documents are necessary for the application of the present document.

- [1] [ETSI GS NFV-IFA 005](#): "Network Functions Virtualisation (NFV) Release 5; Management and Orchestration; Or-Vi reference point - Interface and Information Model Specification".
- [2] [ETSI GS NFV-IFA 006](#): "Network Functions Virtualisation (NFV) Release 5; Management and Orchestration; Vi-Vnfm reference point - Interface and Information Model Specification".
- [3] [ETSI GS NFV-IFA 007](#): "Network Functions Virtualisation (NFV) Release 5; Management and Orchestration; Or-Vnfm reference point - Interface and Information Model Specification".
- [4] [ETSI GS NFV-IFA 008](#): "Network Functions Virtualisation (NFV) Release 5; Management and Orchestration; Ve-Vnfm reference point - Interface and Information Model Specification".
- [5] [ETSI GS NFV-IFA 013](#): "Network Functions Virtualisation (NFV) Release 5; Management and Orchestration; Os-Ma-Nfvo reference point - Interface and Information Model Specification".
- [6] [ETSI GS NFV-IFA 030](#): "Network Functions Virtualisation (NFV) Release 5; Management and Orchestration; Multiple Administrative Domain Aspect Interfaces Specification".
- [7] [ETSI GS NFV-SOL 013](#): "Network Functions Virtualisation (NFV) Release 5; Protocols and Data Models; Specification of common aspects for RESTful NFV MANO APIs".
- [8] [ETSI GS NFV-IFA 048](#): "Network Functions Virtualisation (NFV) Release 5; Management and Orchestration; Policy Information Model Specification".

## 2.2 Informative references

References are either specific (identified by date of publication and/or edition number or version number) or non-specific. For specific references, only the cited version applies. For non-specific references, the latest version of the referenced document (including any amendments) applies.

NOTE: While any hyperlinks included in this clause were valid at the time of publication, ETSI cannot guarantee their long term validity.

The following referenced documents may be useful in implementing an ETSI deliverable or add to the reader's understanding, but are not required for conformance to the present document.

- |       |  |
|-------|--|
| [i.1] | ETSI GR NFV 003: "Network Functions Virtualisation (NFV); Terminology for Main Concepts in NFV".   |
| [i.2] | ETSI GR NFV-IFA 023: "Network Functions Virtualisation (NFV); Management and Orchestration; Report on Policy Management in MANO; Release 3".                   |
| [i.3] | <a href="#">OpenAPI™ Specification</a> .   |
| [i.4] | ETSI GS NFV-SOL 015: "Network Functions Virtualisation (NFV); Protocols and Data Models; Specification of Patterns and Conventions for RESTful NFV-MANO APIs". |

---

## 3 Definition of terms, symbols and abbreviations

### 3.1 Terms

For the purposes of the present document, the terms given in ETSI GR NFV 003 [i.1] apply.

### 3.2 Symbols

Void.

### 3.3 Abbreviations

For the purposes of the present document, the abbreviations given in ETSI GR NFV 003 [i.1] and the following apply:

|      |                                 |
|------|---------------------------------|
| PF   | Policy Function                 |
| REST | Representational State Transfer |
| URI  | Uniform Resource Identifier     |

---

## 4 General aspects

### 4.1 Overview

The present document defines the protocol and data model for the policy management interface used over the following reference points, in the form of RESTful Application Programming Interfaces (APIs) specifications:

- Os-Ma-nfvo reference point (interface produced by the NFVO towards the OSS/BSS).
- Or-Vnfm reference point (interface produced by the VNFM towards the NFVO).
- Ve-Vnfm-em reference point (interface produced by the VNFM towards the EM).
- Or-Vi reference point (interface produced by the VIM towards the NFVO).



- Vi-Vnfm reference point (interface produced by the VIM towards the VNFM).
- Or-Or reference point (interface produced by NFVO-N towards NFVO-C).

The design of the protocol and data model for the policy management interface is based on the information model and requirements defined in ETSI GS NFV-IFA 005 [1], ETSI GS NFV-IFA 006 [2], ETSI GS NFV-IFA 007 [3], ETSI GS NFV-IFA 008 [4], ETSI GS NFV-IFA 013 [5] and ETSI GS NFV-IFA 030 [6]. ETSI GS NFV-IFA 048 [8] specifies the structure of the NFV-MANO policies which serves as an information model for the policy content referred in the present document.

In clause 4, general aspects are specified that apply to the policy management interface over different reference points. In addition, the provisions in clauses 4, 5, 6, 8 and 9 of ETSI GS NFV-SOL 013 [7] define common aspects of RESTful NFV-MANO APIs, and shall apply for all APIs defined in the present document.

In clause 5, the protocol and data model for the policy management interface is specified. The resource structure with associated HTTP methods is defined and applicable flows are provided. Further, the resources and the data model are specified in detail.

## 4.2 Common data types

The structured data types and simple data types defined in clause 7 of ETSI GS NFV-SOL 013 [7] shall apply in the present document.

---

# 5 Policy Management interface

## 5.1 Description

This interface allows the API consumer to invoke policy management operations towards the API producer, to subscribe to notifications regarding policy changes and any detected policy conflicts and to retrieve API version information.

The operations provided through this interface are:

- Transfer Policy.
- Delete Policy.
- Query Policy.
- Activate Policy.
- Deactivate Policy.
- Associate Policy.
- Disassociate Policy.
- Subscribe.
- Query Subscription Information.
- Terminate Subscription.
- Notify.

NOTE: The association feature (i.e. the associate policy and disassociate policy operations) applies when the Policy Function (PF) that enforces the policy is NFVO, NFVO-N or VNFM.

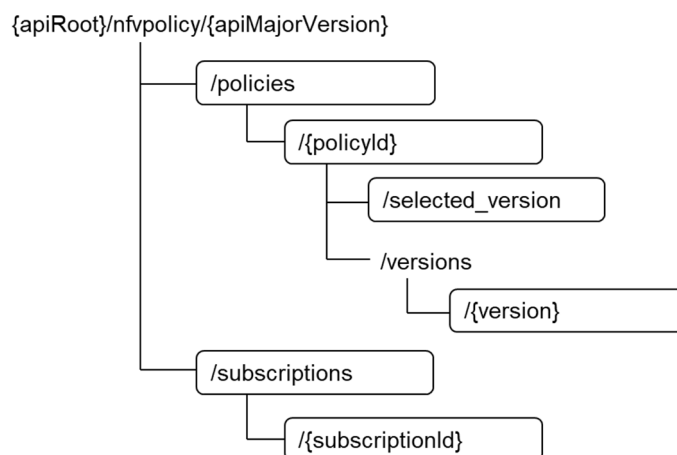
## 5.2 API version

For the policy management interface as specified in the present document, the MAJOR version field shall be 1, the MINOR version field shall be 0 and the PATCH version field shall be 0 (see clause 9.1 of ETSI GS NFV-SOL 013 [7] for a definition of the version fields). Consequently, the {apiMajorVersion} URI variable shall be set to "v1".

## 5.3 Resource structure and method

All resource URIs of the API shall use the base URI specification defined in clause 4.1 of ETSI GS NFV-SOL 013 [7]. The string "nfvpolicy" shall be used to represent {apiName}. All resource URIs in the clauses below are defined relative to the above base URI.

Figure 5.3-1 shows the overall resource URI structure defined for the policy management interface.



**Figure 5.3-1: Resource URI structure of the policy management interface**

Table 5.3-1 lists the individual resources defined, and the applicable HTTP methods.

The API producer shall support responding to requests for all HTTP methods on the resources in table 5.3-1 that are marked as "M" (mandatory) in the "Cat" column. The API producer shall also support the "API versions" resource as specified in clause 9.3.2 of ETSI GS NFV-SOL 013 [7].

**Table 5.3-1: Resources and methods overview of the policy management interface**

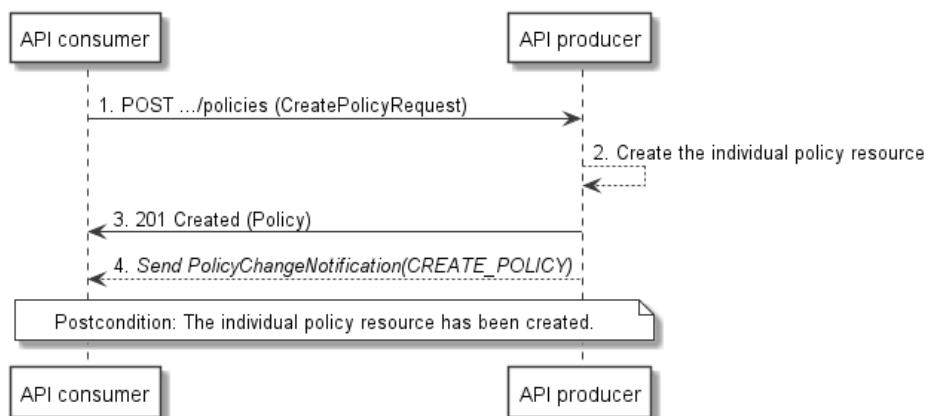
| Resource name     | Resource URI         | HTTP Method | Cat | Meaning  |
|-------------------|----------------------|-------------|-----|--|
| Policies          | /policies            | POST        | M   | Create a new individual policy resource.   |
|                   |                      | GET         | M   | Query multiple policies.   |
| Individual policy | /policies/{policyId} | GET         | M   | Read an individual policy.   |
|                   |                      | PATCH       | M   | Activate/deactivate, or modify the associations, or change the selected version of an individual policy. |
|                   |                      | DELETE      | M   | Delete an individual policy.   |

| Resource name  | Resource URI                            | HTTP Method | Cat      | Meaning   |
|--|---|-------------|----------|---|
| Selected version of an individual policy   | /policies/{policyId}/selected_version   | GET         | M        | Read the selected version of an individual policy.                    |
| Particular version of an individual policy   | /policies/{policyId}/versions/{version} | GET         | M        | Read a particular version of an individual policy.                    |
|  |   | PUT         | M        | Transfer the content of a particular version of an individual policy. |
|  |   | DELETE      | M        | Delete a particular version of an individual policy.                  |
| Subscriptions  | /subscriptions                          | POST        | M        | Subscribe to notifications of policy changes or conflicts.            |
|  |   | GET         | M        | Query multiple subscriptions.   |
| Individual subscription  | /subscriptions/{subscriptionId}         | GET         | M        | Read an individual subscription resource.                             |
|  |   | DELETE      | M        | Terminate a subscription.   |
| Notification endpoint  | (client-provided)                       | POST        | See note | Notify about policy changes or conflicts. See note.                   |
|  |   | GET         | See note | Test the notification endpoint. See note.                             |
| NOTE: The API producer shall support invoking the HTTP methods defined for the "Notification endpoint" resource exposed by the API consumer. If the API consumer supports invoking the POST method on the "Subscriptions" resource towards the API producer, it shall also support responding to the HTTP requests defined for the "Notification endpoint" resource. |   |             |          |   |

## 5.4 Sequence diagrams (informative)

### 5.4.1 Flow of creating a policy

This clause describes a sequence for creating an individual policy resource.



**Figure 5.4.1-1: Flow of policy creation**

Policy creation, as illustrated in figure 5.4.1-1, consists of the following steps.

**Precondition:** None.

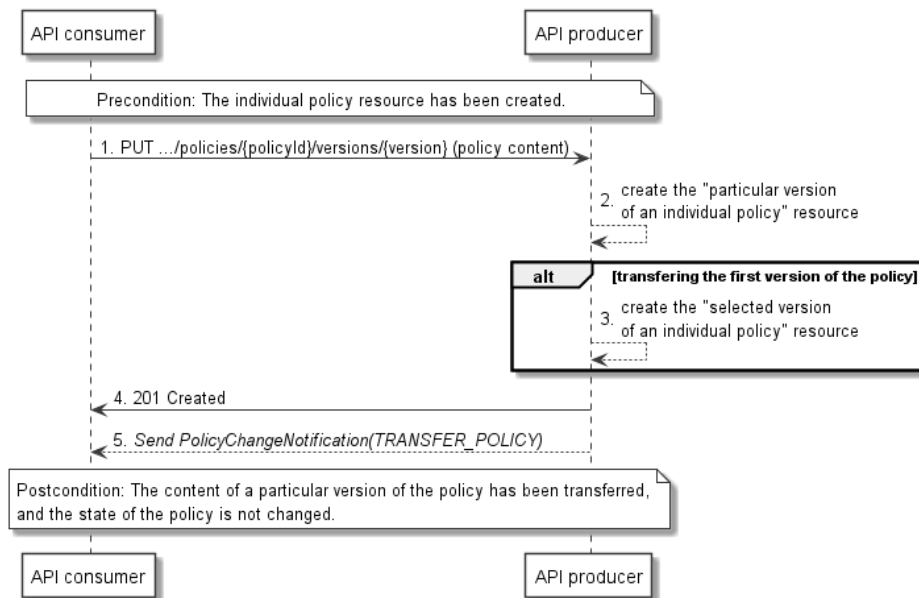
- 1) The API consumer sends a POST request to the "Policies" resource, including one data structure of type "CreatePolicyRequest" in the payload body.
- 2) The API producer creates an individual policy resource in CREATED/DEACTIVATED state.
- 3) The API producer returns a "201 Created" response to the API consumer, and includes in the payload body a representation of the policy, and provides the URI of the newly-created individual policy resource in the "Location" HTTP header.
- 4) The API producer sends a policy change notification (see clause 5.4.8) to the API consumer to indicate the creation of the individual policy resource.

**Postcondition:** Upon successful completion, the individual policy resource has been created.

**Error handling:** In case of failure, appropriate error information is provided in the response.

## 5.4.2 Flow of transferring a policy

This clause describes a sequence for transferring a policy.



**Figure 5.4.2-1: Flow of policy transfer**

Policy transfer, as illustrated in figure 5.4.2-1, consists of the following steps.

**Precondition:** The individual policy resource has been created.

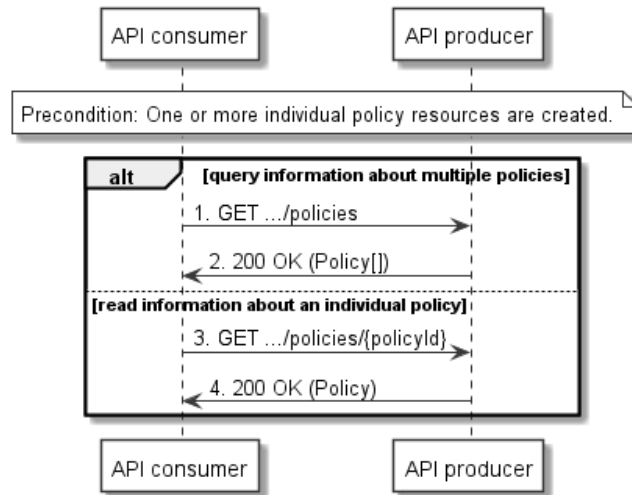
- 1) The API consumer sends a PUT request to the "particular version of an individual policy" resource addressed by the appropriate policy identifier and version identifier in its resource URI, and includes a copy of the policy content in the payload body. The version identifier in the URI is assigned by the API consumer, and cannot be overlapped with any existing version identifiers of the same policy on the API producer.
- 2) The API producer creates the "particular version of an individual policy" resource.
- 3) If the API consumer is transferring the first version of the policy, the API producer creates the "selected version of an individual policy" resource, sets the first version as the default selected version and changes the transferState of the policy to TRANSFERRED.
- 4) The API producer returns a "201 Created" response to the API consumer.
- 5) The API producer sends a policy change notification (see clause 5.4.8) to the API consumer to indicate the transfer of the policy content.

**Postcondition:** Upon successful completion, the content of a particular version of the policy has been transferred, and the state of the policy is not changed.

**Error handling:** In case of failure, appropriate error information is provided in the response.

### 5.4.3 Flow of querying/reading policies

This clause describes a sequence for querying/reading policies.



**Figure 5.4.3-1: Flow of policy query/read**

Policy query/read, as illustrated in figure 5.4.3-1, consists of the following steps.

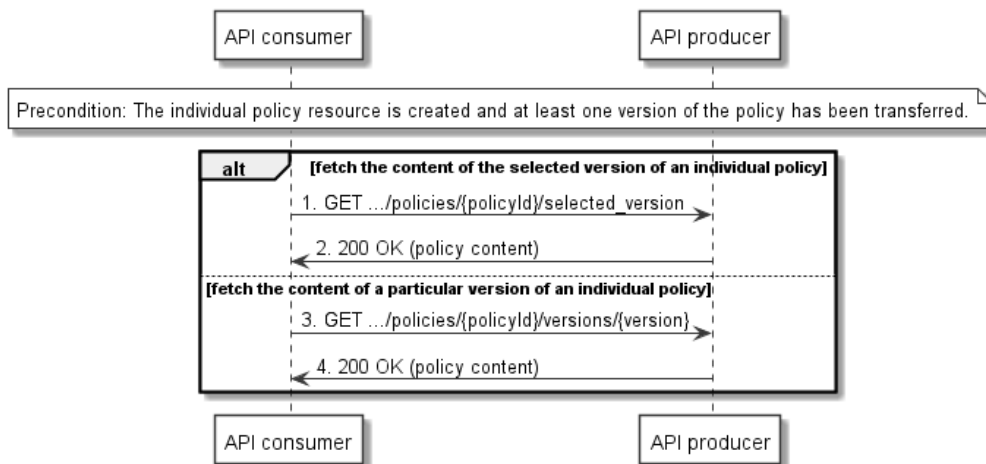
**Precondition:** One or more individual policy resources are created.

- 1) If the API consumer intends to query multiple policies, it sends a GET request to the "policies" resource.
- 2) The API producer returns a "200 OK" response to the API consumer, and includes zero or more data structures of type "Policy" in the payload body.
- 3) If the API consumer intends to read information about an individual policy, it sends a GET request to the "individual policy" resource, addressed by the appropriate policy identifier in its resource URI.
- 4) The API producer returns a "200 OK" response to the API consumer, and includes one data structure of type "Policy" in the payload body.

**Error handling:** In case of failure, appropriate error information is provided in the response.

### 5.4.4 Flow of fetching the content of a policy

This clause describes a sequence for fetching the content of a policy.



**Figure 5.4.4-1: Flow of fetching policy content**

Fetching policy content, as illustrated in figure 5.4.4-1, consists of the following steps.

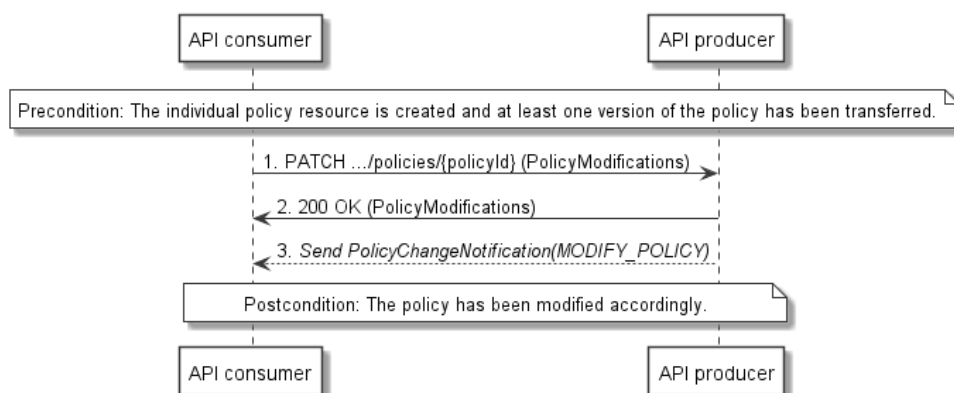
**Precondition:** The individual policy resource is created and at least one version of the policy has been transferred.

- 1) If the API consumer intends to fetch the content of the selected version of the policy, it sends a GET request to the "selected version of an individual policy" resource, addressed by the appropriate policy identifier in its resource URI.
- 2) The API producer returns a "200 OK" response to the API consumer, and includes a copy of the policy content in the payload body.
- 3) If the API consumer intends to fetch the content of a particular version of the policy, it sends a GET request to the "particular version of an individual policy" resource, addressed by the appropriate policy identifier and version identifier in its resource URI.
- 4) The API producer returns a "200 OK" response to the API consumer, and includes a copy of the policy content in the payload body.

**Error handling:** In case of failure, appropriate error information is provided in the response.

## 5.4.5 Flow of modifying a policy

This clause describes a sequence for modifying a policy, which includes activating/deactivating a policy, or modifying the associations of a policy, or changing the selected version of a policy.



**Figure 5.4.5-1: Flow of policy modification**

Policy modification, as illustrated in figure 5.4.5-1, consists of the following steps.

**Precondition:** The individual policy resource is created and at least one version of the policy has been transferred.

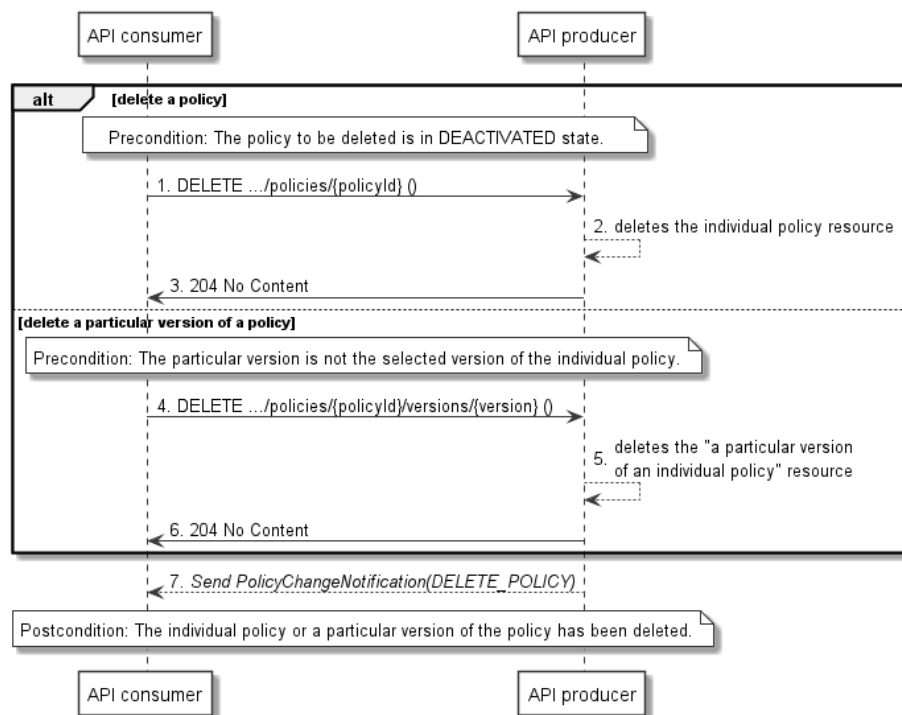
- 1) If the API consumer intends to modify a policy, it sends a PATCH request to the "individual policy" resource, addressed by the appropriate policy identifier in its resource URI, and includes one data structure of type "PolicyModifications" in the payload body.
- 2) The API producer returns a "200 OK" response to the API consumer, and includes in the payload body a data structure of type "PolicyModifications" to represent the applied policy modifications.
- 3) The API producer sends a policy change notification (see clause 5.4.8) to the API consumer to indicate the modification of the policy.

**Postcondition:** Upon successful completion, the policy has been modified accordingly.

**Error handling:** In case of failure, appropriate error information is provided in the response.

### 5.4.6 Flow of deleting a policy

This clause describes a sequence for deleting a policy.



**Figure 5.4.6-1: Flow of policy deletion**

Policy deletion, as illustrated in figure 5.4.6-1, consists of the following steps.

**Precondition:** The individual policy resource to be deleted is in DEACTIVATED state, or the particular version of the policy to be deleted is not the selected version of the individual policy:

- 1) If the API consumer intends to delete an individual policy, it sends a DELETE request to the "individual policy" resource, addressed by the appropriate policy identifier in its URI.
- 2) The API producer deletes the individual policy resource.
- 3) The API producer returns a "204 No Content" response with an empty payload body to the API consumer.
- 4) If the API consumer intends to delete a particular version of a policy, it sends a DELETE request to the "a particular version of an individual policy" resource, addressed by the appropriate policy identifier and version identifier in its URI.
- 5) The API producer delete the requested "a particular version of an individual policy" resource.
- 6) The API producer returns a "204 No Content" response with an empty payload body to the API consumer.

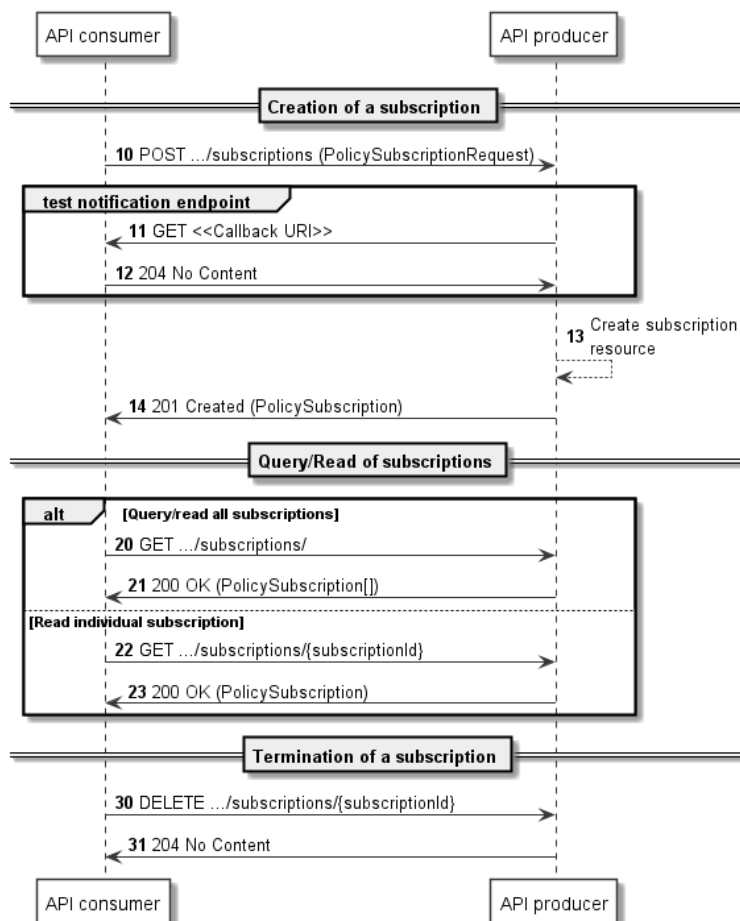
- 7) The API producer sends a policy change notification (see clause 5.4.8) to the API consumer to indicate the deletion of the individual policy or the deletion of the particular version of the policy.

**Postcondition:** Upon successful completion, the individual policy or a particular version of the policy has been deleted.

**Error handling:** In case of failure, appropriate error information is provided in the response.

## 5.4.7 Flow of managing subscriptions

This clause describes a sequence for creating, querying/reading and terminating subscriptions to notifications related to policy management.



**Figure 5.4.7-1: Flow of managing subscriptions**

### A) Procedure of subscription creation

The procedure of creating subscriptions consists of the following steps as illustrated in figure 5.4.7-1.

**Precondition:** The notification endpoint URI is enabled.

- 10) The API consumer sends a POST request to the "subscriptions" resource including in the payload body a data structure of type "PolicySubscriptionRequest". This data structure contains filtering criteria and a client side URI to which the API producer will subsequently send notifications about events that match the filter.
- 11) To test the notification endpoint that was registered by the API consumer as part of the subscription, the API producer sends a GET request to the notification endpoint URI.
- 12) The API consumer returns a "204 No Content" response to indicate success.
- 13) The API producer creates a new subscription for notifications related to policy management, and a resource that represents this subscription.



- 14) The API producer returns a "201 Created" response containing a data structure of type "PolicySubscription", representing the subscription resource created by the API producer, and provides the URI of the newly-created resource in the "Location" HTTP header.

**Postcondition:** The subscription to notifications related to policy management is available to the API consumer.

**Error handling:** The API producer rejects a subscription if the subscription information is not valid: endpoint cannot be reached, subscription information is malformed, etc.

#### B) Procedure of subscription query/read

The procedure of querying/reading subscriptions consists of the following steps, as illustrated in figure 5.4.7-1.

**Precondition:** Subscriptions have been created.

- 20) Optionally, for example when trying to recover from an error situation, the API consumer can query information about its subscriptions by sending a GET request to the "subscriptions" resource.
- 21) In case of step 20), the API producer returns a "200 OK" response that contains the list of representations of all existing subscriptions that were created by the API consumer.
- 22) Optionally, for example when trying to recover from an error situation, the API consumer can read information about a particular subscription by sending a GET request to the resource representing that individual subscription.
- 23) In case of step 22), the API producer returns a "200 OK" response that contains a representation of that individual subscription.

**Postcondition:** The subscription information is available to the API consumer.

**Error handling:** The API producer provides in the response message appropriate error information that reports an erroneous query request.

#### C) Procedure of subscription termination

The procedure of terminating a subscription consists of the following steps, as illustrated in figure 5.4.7-1.

**Precondition:** The subscription to terminate exists.

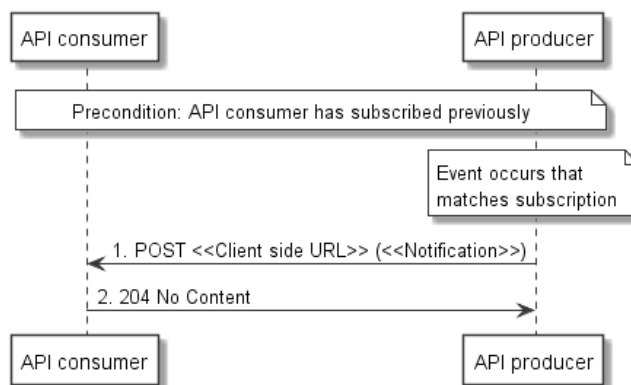
- 30) When the API consumer does not need the subscription anymore, it terminates the subscription by sending a DELETE request to the resource that represents the individual subscription.
- 31) The API producer acknowledges the successful termination of the subscription by returning a "204 No Content" response.

**Postcondition:** The subscription to notifications related to policy management is deleted and not available to the API consumer, and notifications associated to this subscription are not sent anymore by the API producer.

**Error handling:** The API producer provides in the response message appropriate error information that reports an erroneous termination request: the subscription to terminate does not exist, etc.

### 5.4.8 Flow of sending notifications

This clause describes the procedure for sending notifications related to policy management.



**Figure 5.4.8-1: Flow of sending notifications**

The procedure consists of the following steps as illustrated in figure 5.4.8-1.

**Precondition:** The API consumer has subscribed previously for notifications related to policy management and the API producer has thus a related subscription:

- 1) If an event occurs that matches the filtering criteria which are part of the subscription, the API producer generates a notification that includes information about the event, and sends it in the body of a POST request to the URI which the API consumer has registered as part of the subscription request. The variable <<Notification>> in the flow is a placeholder for the different types of notifications that can be sent by this API.
- 2) The API consumer acknowledges the successful delivery of the notification by returning a "204 No Content" response.

**Postcondition:** The notification is available to the API consumer.

**Error handling:** If the API producer does not receive the "204 No Content" response from the API consumer, it can retry sending the notification.

## 5.5 Resources

### 5.5.1 Introduction

This clause defines all the resources and methods provided by the policy management interface.

### 5.5.2 Resource: API versions

The "API versions" resources as defined in clause 9.3.3 of ETSI GS NFV-SOL 013 [7] are part of the policy management interface.

### 5.5.3 Resource: Policies

#### 5.5.3.1 Description

This resource represents policies. The API consumer can use this resource to create a policy, and to query multiple policies.

#### 5.5.3.2 Resource definition

The resource URI is:

**{apiRoot}/nfvpolicy/{apiMajorVersion}/policies**

This resource shall support the resource URI variables defined in table 5.5.3.2-1.

**Table 5.5.3.2-1: Resource URI variables for this resource**

| Name            | Definition                                |
|-----------------|---|
| apiRoot         | See clause 4.1 of ETSI GS NFV-SOL 013 [7] |
| apiMajorVersion | See clause 5.2                            |

### 5.5.3.3 Resource methods

#### 5.5.3.3.1 POST

The POST method creates a new individual policy resource.

This method shall follow the provisions specified in tables 5.5.3.3.1-1 and 5.5.3.3.1-2 for URI query parameters, request and response data structures, and response codes.

As the result of successfully executing this method, a new "individual policy" resource as defined in clause 5.5.4 shall have been created, and the value of the "activationStatus" attribute in the representation of that resource shall be "DEACTIVATED". A notification of type PolicyChangeNotification shall be triggered as part of successfully executing this method as defined in clause 5.6.2.7.

**Table 5.5.3.3.1-1: URI query parameters supported by the POST method on this resource**

| Name           | Cardinality | Description |
|----------------|-------------|-------------|
| none supported |             |             |

**Table 5.5.3.3.1-2: Details of the POST request/response on this resource**

| Request body  | Data type           | Cardinality           | Description   |   |
|---------------|---------------------|-----------------------|---|---|
|               | CreatePolicyRequest | 1                     | The policy creation parameters, as defined in clause 5.6.2.2. |   |
| Response body | Data type           | Cardinality           | Response Codes  | Description   |
|               | Policy              | 1                     | 201 Created   | <p>Shall be returned when a policy has been created successfully.</p> <p>The response body shall contain a representation of the individual policy, as defined in clause 5.6.2.3.</p> <p>The HTTP response shall include a "Location" HTTP header that contains the resource URI of the created policy.</p> |
|               | ProblemDetails      | See clause 6.4 of [7] | 4xx/5xx   | In addition to the response codes defined above, any common error response code as defined in clause 6.4 of ETSI GS NFV-SOL 013 [7] may be returned.  |

#### 5.5.3.3.2 GET

The GET method queries information about multiple policies.

This method shall follow the provisions specified in tables 5.5.3.3.2-1 and 5.5.3.3.2-2 for URI query parameters, request and response data structures and response codes.

**Table 5.5.3.3.2-1: URI query parameters supported by the GET method on this resource**

| Name                   | Cardinality | Description  |
|------------------------|-------------|--|
| filter                 | 0..1        | <p>Attribute-based filtering expression according to clause 5.2 of ETSI GS NFV-SOL 013 [7].</p> <p>The API producer shall support receiving this parameter as part of the URI query string. The API consumer may supply this parameter.</p> <p>All attribute names that appear in the Policy and in data types referenced from it shall be supported by the API producer in the filter expression.</p> |
| nextpage_opaque_marker | 0..1        | Marker to obtain the next page of a paged response. Shall be supported by the API producer if it supports alternative 2 (paging) according to clause 5.4.2.1 of ETSI GS NFV-SOL 013 [7] for this resource.   |

**Table 5.5.3.3.2-2: Details of the GET request/response on this resource**

| Request body  | Data type      | Cardinality           | Description     |   |
|---------------|----------------|-----------------------|-----------------|---|
|               | n/a            |                       |                 |   |
| Response body | Data type      | Cardinality           | Response Codes  | Description   |
|               | Policy         | 0..N                  | 200 OK          | <p>Shall be returned when information about zero or more policies has been queried successfully.</p> <p>The response body shall contain in an array the representations of zero or more policies, as defined in clause 5.6.2.3.</p> <p>If the "filter" URI parameter was supplied in the request and is supported, the data in the response body shall have been transformed according to the rules specified in clauses 5.2.2 and 5.3.2 of ETSI GS NFV- SOL 013 [7], respectively.</p> <p>If the API producer supports alternative 2 (paging) according to clause 5.4.2.1 of ETSI GS NFV-SOL 013 [7] for this resource, inclusion of the Link HTTP header in this response shall follow the provisions in clause 5.4.2.3 of ETSI GS NFV-SOL 013 [7].</p> |
|               | ProblemDetails | 1                     | 400 Bad Request | <p>Shall be returned upon the following error: Invalid attribute-based filtering expression.</p> <p>The response body shall contain a ProblemDetails structure, in which the "detail" attribute should convey more information about the error.</p>   |
|               | ProblemDetails | 1                     | 400 Bad Request | <p>Shall be returned upon the following error: Response too big.</p> <p>If the API producer supports alternative 1 (error) according to clause 5.4.2.1 of ETSI GS NFV-SOL 013 [7] for this resource, this error response shall follow the provisions in clause 5.4.2.2 of ETSI GS NFV-SOL 013 [7].</p>  |
|               | ProblemDetails | See clause 6.4 of [7] | 4xx/5xx         | In addition to the response codes defined above, any common error response code as defined in clause 6.4 of ETSI GS NFV-SOL 013 [7] may be returned.  |

### 5.5.3.3.3 PUT

This method is not supported. When this method is requested on this resource, the API producer shall return a "405 Method Not Allowed" response as defined in clause 6.4 of ETSI GS NFV-SOL 013 [7].

#### 5.5.3.3.4 PATCH

This method is not supported. When this method is requested on this resource, the API producer shall return a "405 Method Not Allowed" response as defined in clause 6.4 of ETSI GS NFV-SOL 013 [7].

#### 5.5.3.3.5 DELETE

This method is not supported. When this method is requested on this resource, the API producer shall return a "405 Method Not Allowed" response as defined in clause 6.4 of ETSI GS NFV-SOL 013 [7].

### 5.5.4 Resource: Individual policy

#### 5.5.4.1 Description

This resource represents an individual policy. The API consumer can use this resource to modify an individual policy, to read information about the policy and delete the policy.

#### 5.5.4.2 Resource definition

The resource URI is:

**{apiRoot}/nfvpolicy/{apiMajorVersion}/policies/{policyId}**

This resource shall support the resource URI variables defined in table 5.5.4.2-1.

**Table 5.5.4.2-1: Resource URI variables for this resource**

| Name  | Definition                                |
|---|---|
| apiRoot   | See clause 4.1 of ETSI GS NFV-SOL 013 [7] |
| apiMajorVersion   | See clause 5.2                            |
| policyId  | Identifier of the policy. See note        |
| NOTE: This identifier can be retrieved from the resource referenced by the "Location" HTTP header in the response to a POST request creating a new "individual policy" resource. It can also be retrieved from the "id" attribute in the payload body of that response. |   |

#### 5.5.4.3 Resource methods

##### 5.5.4.3.1 POST

This method is not supported. When this method is requested on this resource, the API producer shall return a "405 Method Not Allowed" response as defined in clause 4.6 of ETSI GS NFV-SOL 013 [7].

##### 5.5.4.3.2 GET

The GET method retrieves information about a policy by reading an individual policy resource.

This method shall follow the provisions specified in tables 5.5.4.3.2-1 and 5.5.4.3.2-2 for URI query parameters, request and response data structures, and response codes.

**Table 5.5.4.3.2-1: URI query parameters supported by the GET method on this resource**

| Name           | Cardinality | Description |
|----------------|-------------|-------------|
| none supported |             |             |

**Table 5.5.4.3.2-2: Details of the GET request/response on this resource**

| Request body  | Data type      | Cardinality           | Description    |  |
|---------------|----------------|-----------------------|----------------|--|
|               | n/a            |                       |                |  |
| Response body | Data type      | Cardinality           | Response Codes | Description  |
|               | Policy         | 1                     | 200 OK         | Shall be returned when information about an individual policy has been read successfully.<br><br>The response body shall contain a representation of the policy, as defined in clause 5.6.2.3. |
|               | ProblemDetails | See clause 6.4 of [7] | 4xx/5xx        | In addition to the response codes defined above, any common error response code as defined in clause 6.4 of ETSI GS NFV-SOL 013 [7] may be returned.   |

#### 5.5.4.3.3 PUT

This method is not supported. When this method is requested on this resource, the API producer shall return a "405 Method Not Allowed" response as defined in clause 6.4 of ETSI GS NFV-SOL 013 [7].

#### 5.5.4.3.4 PATCH

The PATCH method modifies a policy.

This method shall follow the provisions specified in tables 5.5.4.3.4-1 and 5.5.4.3.4-2 for URI query parameters, request and response data structures, and response codes.

Modification of a policy includes three functionalities: activating/deactivating the policy, changing the associations of the policy, and changing the selected version of the policy. The three functionalities may be combined flexibly in one request unless there is conflict with the state of the policy. With respect to changing the associations, refer also to the provisions specified in clause 5.5.6.3.3 regarding the initial setting of the "associations" attribute values in the "Individual policy" representation, which can be modified using the present method.

**Table 5.5.4.3.4-1: URI query parameters supported by the PATCH method on this resource**

| Name           | Cardinality | Description |
|----------------|-------------|-------------|
| none supported |             |             |

**Table 5.5.4.3.4-2: Details of the PATCH request/response on this resource**

| Request body  | Data type           | Cardinality           | Description   |  |
|---------------|---------------------|-----------------------|---|--|
|               | PolicyModifications | 1                     | The parameter for the policy modifications, as defined in clause 5.6.2.4. |  |
| Response body | Data type           | Cardinality           | Response Codes  | Description  |
|               | PolicyModifications | 1                     | 200 OK  | Shall be returned when the modifications have been processed successfully.<br><br>The response body shall contain a representation of modifications of the policy, as defined in clause 5.6.2.4.   |
|               | ProblemDetails      | 1                     | 409 Conflict  | Shall be returned upon the following error: The operation cannot be executed currently, due to a conflict with the state of the resource.<br><br>Typical reasons are attempts to: <ul style="list-style-type: none"> <li>• modify a policy in CREATED state;</li> <li>• activate a policy in ACTIVATED state;</li> <li>• deactivate a policy in DEACTIVATED state.</li> </ul> The response body shall contain a ProblemDetails structure, in which the "detail" attribute shall convey more information about the error. |
|               | ProblemDetails      | See clause 6.4 of [7] | 4xx/5xx   | In addition to the response codes defined above, any common error response code as defined in clause 6.4 of ETSI GS NFV-SOL 013 [7] may be returned.   |

#### 5.5.4.3.5 DELETE

The DELETE method deletes an individual policy.

This method shall follow the provisions specified in tables 5.5.4.3.5-1 and 5.5.4.3.5-2 for URI query parameters, request and response data structures, and response codes.

As the result of successfully executing this method, the "individual policy" resource shall not exist any longer. A notification of type "PolicyChangeNotification" shall be triggered as part of successfully executing this method as defined in clause 5.6.2.7.

**Table 5.5.4.3.5-1: URI query parameters supported by the DELETE method on this resource**

| Name           | Cardinality | Description |
|----------------|-------------|-------------|
| none supported |             |             |

Table 5.5.4.3.5-2: Details of the DELETE request/response on this resource

| Request body  | Data type      | Cardinality           | Description    |  |
|---------------|----------------|-----------------------|----------------|--|
|               | n/a            |                       |                |  |
| Response body | Data type      | Cardinality           | Response Codes | Description  |
|               | n/a            |                       | 204 No Content | Shall be returned when the individual policy has been deleted successfully.<br><br>The response body shall be empty.   |
|               | ProblemDetails | 1                     | 409 Conflict   | Shall be returned upon the following error: The operation cannot be executed currently, due to a conflict with the state of the resource.<br><br>Typically, this is due to the fact that the policy is in ACTIVATED state.<br><br>The response body shall contain a ProblemDetails structure, in which the "detail" attribute shall convey more information about the error. |
|               | ProblemDetails | See clause 6.4 of [7] | 4xx/5xx        | In addition to the response codes defined above, any common error response code as defined in clause 6.4 of ETSI GS NFV-SOL 013 [7] may be returned.   |

## 5.5.5 Resource: Selected version of an individual policy

### 5.5.5.1 Description

This resource represents the selected version of an individual policy. The API consumer can use this resource to read the content of the selected version of the policy.

The selected version is the version to be used when activating the policy and is then enforced as long as the policy is in ACTIVATED state.

### 5.5.5.2 Resource definition

The resource URI is:

**{apiRoot}/nfvpolicy/{apiMajorVersion}/policies/{policyId}/selected\_version**

This resource shall support the resource URI variables defined in table 5.5.5.2-1.

Table 5.5.5.2-1: Resource URI variables for this resource

| Name            | Definition  |
|-----------------|---|
| apiRoot         | See clause 4.1 of ETSI GS NFV-SOL 013 [7]   |
| apiMajorVersion | See clause 5.2  |
| policyId        | Identifier of the policy. See note.   |
| NOTE:           | This identifier can be retrieved from the resource referenced by the "Location" HTTP header in the response to a POST request creating a new "individual policy" resource. It can also be retrieved from the "id" attribute in the payload body of that response. |

### 5.5.5.3 Resource methods

#### 5.5.5.3.1 POST

This method is not supported. When this method is requested on this resource, the API producer shall return a "405 Method Not Allowed" response as defined in clause 4.6 of ETSI GS NFV-SOL 013 [7].



### 5.5.5.3.2 GET

The GET method fetches the content of the selected version of an individual policy.

This method shall follow the provisions specified in tables 5.5.5.3.2-1 and 5.5.5.3.2-2 for URI query parameters, request and response data structures, and response codes.

**Table 5.5.5.3.2-1: URI query parameters supported by the GET method on this resource**

| Name           | Cardinality | Description |
|----------------|-------------|-------------|
| none supported |             |             |

**Table 5.5.5.3.2-2: Details of the GET request/response on this resource**

| Request body  | Data type      | Cardinality           | Description    |   |
|---------------|----------------|-----------------------|----------------|---|
|               | n/a            |                       |                |   |
| Response body | Data type      | Cardinality           | Response Codes | Description   |
|               | n/a            | 1                     | 200 OK         | <p>Shall be returned when the content of the selected version of an individual policy has been read successfully.</p> <p>The response body shall include a copy of the policy content.</p> <p>The "Content-Type" HTTP header shall be set according to the type of the policy content.</p>  |
|               | ProblemDetails | 0..1                  | 404 Not Found  | <p>Shall be returned upon the following error: The API producer did not find a current representation for the target resource or is not willing to disclose that one exists.</p> <p>The general cause for this error and its handling is specified in clause 6.4 of ETSI GS NFV-SOL 013 [7], including rules for the presence of the response body.</p> <p>Specifically in case of this resource, the response code 404 shall also be returned if the policy is in CREATED state.</p> <p>In this case, the response body shall be present, and shall contain a ProblemDetails structure, in which the "detail" attribute shall convey more information about the error.</p> |
|               | ProblemDetails | See clause 6.4 of [7] | 4xx/5xx        | In addition to the response codes defined above, any common error response code as defined in clause 6.4 of ETSI GS NFV-SOL 013 [7] may be returned.  |

### 5.5.5.3.3 PUT

This method is not supported. When this method is requested on this resource, the API producer shall return a "405 Method Not Allowed" response as defined in clause 4.6 of ETSI GS NFV-SOL 013 [7].

### 5.5.5.3.4 PATCH

This method is not supported. When this method is requested on this resource, the API producer shall return a "405 Method Not Allowed" response as defined in clause 4.6 of ETSI GS NFV-SOL 013 [7].

### 5.5.5.3.5 DELETE

This method is not supported. When this method is requested on this resource, the API producer shall return a "405 Method Not Allowed" response as defined in clause 4.6 of ETSI GS NFV-SOL 013 [7].

## 5.5.6 Resource: Particular version of an individual policy

### 5.5.6.1 Description

This resource represents a particular version of an individual policy. The API consumer can use this resource to transfer the content, read the content and delete a particular version of a policy.

### 5.5.6.2 Resource definition

The resource URI is:

**{apiRoot}/nfvpolicy/{apiMajorVersion}/policies/{policyId}/versions/{version}**

This resource shall support the resource URI variables defined in table 5.5.6.2-1.

**Table 5.5.6.2-1: Resource URI variables for this resource**

| Name   | Definition                                 |
|--|--|
| apiRoot  | See clause 4.1 of ETSI GS NFV-SOL 013 [7]. |
| apiMajorVersion  | See clause 5.2.                            |
| policyId   | Identifier of the policy. See note 1.      |
| version  | Version of the policy. See note 2.         |
| NOTE 1: This identifier can be retrieved from the resource referenced by the "Location" HTTP header in the response to a POST request creating a new "individual policy" resource. It can also be retrieved from the "id" attribute in the payload body of that response.                    |  |
| NOTE 2: This URI variable is provided by the API consumer in a PUT request creating the new particular version of an individual policy resource. It can be retrieved from the "versions" attribute in the payload body of the response to a GET request to the "individual policy" resource. |  |

### 5.5.6.3 Resource methods

#### 5.5.6.3.1 POST

This method is not supported. When this method is requested on this resource, the API producer shall return a "405 Method Not Allowed" response as defined in clause 4.6 of ETSI GS NFV-SOL 013 [7].

#### 5.5.6.3.2 GET

The GET method fetches the content of a particular version of an individual policy.

This method shall follow the provisions specified in tables 5.5.6.3.2-1 and 5.5.6.3.2-2 for URI query parameters, request and response data structures and response codes.

**Table 5.5.6.3.2-1: URI query parameters supported by the GET method on this resource**

| Name           | Cardinality | Description |
|----------------|-------------|-------------|
| none supported |             |             |

**Table 5.5.6.3.2-2: Details of the GET request/response on this resource**

| Request body  | Data type      | Cardinality           | Description    |  |
|---------------|----------------|-----------------------|----------------|--|
|               | n/a            |                       |                |  |
| Response body | Data type      | Cardinality           | Response Codes | Description  |
|               | n/a            | 1                     | 200 OK         | <p>Shall be returned when the content of a particular version of an individual policy has been read successfully.</p> <p>The response body shall include a copy of the policy content.</p> <p>The "Content-Type" HTTP header shall be set according to the type of the policy content.</p> |
|               | ProblemDetails | See clause 6.4 of [7] | 4xx/5xx        | In addition to the response codes defined above, any common error response code as defined in clause 6.4 of ETSI GS NFV-SOL 013 [7] may be returned.   |

### 5.5.6.3.3 PUT

The PUT method transfers the content of a particular version of an individual policy.

As the result of successfully executing this method, the API producer shall update the "associations" attribute in the representation of the "Individual policy" resource as follows:

- If no associations were provided in the initial creation of the "Individual policy" resource (see clause 5.5.3.3.1) and the policy content includes relevant associations information, the API producer shall set the values of "associations" attribute according to the information in the policy content.
- If associations were provided in the initial creation of the "Individual policy" resource (see clause 5.5.3.3.1) or current values are already set on the "associations" attribute in the representation of the "Individual policy" resource, and the policy content includes relevant associations information, the API producer shall not apply the values present in the policy content (i.e. values provided via the API take precedence).

This method shall follow the provisions specified in tables 5.5.6.3.3-1 and 5.5.6.3.3-2 for URI query parameters, request and response data structures, and response codes.

**Table 5.5.6.3.3-1: URI query parameters supported by the PUT method on this resource**

| Name           | Cardinality | Description |
|----------------|-------------|-------------|
| none supported |             |             |

**Table 5.5.6.3.3-2: Details of the PUT request/response on this resource**

| Request body  | Data type      | Cardinality           | Description   |  |
|---------------|----------------|-----------------------|---|--|
|               | n/a            | 1                     | The payload body contains a copy of the policy content.<br><br>The "Content-Type" HTTP header shall be set according to the type of the policy content. |  |
| Response body | Data type      | Cardinality           | Response Codes  | Description  |
|               | n/a            |                       | 201 Created   | Shall be returned when the policy content has been transferred successfully.<br><br>The response body shall be empty.  |
|               | ProblemDetails | 1                     | 409 Conflict  | Shall be returned upon the following error: The operation cannot be executed currently, due to a conflict with an existing resource.<br><br>Typically, this is due to the fact that the particular version has already been transferred to the API producer.<br><br>The response body shall contain a ProblemDetails structure, in which the "detail" attribute shall convey more information about the error. |
|               | ProblemDetails | See clause 6.4 of [7] | 4xx/5xx   | In addition to the response codes defined above, any common error response code as defined in clause 6.4 of ETSI GS NFV-SOL 013 [7] may be returned.   |

#### 5.5.6.3.4 PATCH

This method is not supported. When this method is requested on this resource, the API producer shall return a "405 Method Not Allowed" response as defined in clause 4.6 of ETSI GS NFV-SOL 013 [7].

#### 5.5.6.3.5 DELETE

The DELETE method deletes a particular version of an individual policy.

This method shall follow the provisions specified in tables 5.5.6.3.5-1 and 5.5.6.3.5-2 for URI query parameters, request and response data structures, and response codes.

As the result of successfully executing this method, the "particular version of an individual policy" resource shall be deleted. It is not allowed to delete the selected version of the individual policy.

A notification of type "PolicyChangeNotification" shall be triggered as part of successfully executing this method as defined in clause 5.6.2.8.

**Table 5.5.6.3.5-1: URI query parameters supported by the DELETE method on this resource**

| Name           | Cardinality | Description |
|----------------|-------------|-------------|
| none supported |             |             |

**Table 5.5.6.3.5-2: Details of the DELETE request/response on this resource**

| Request body  | Data type      | Cardinality           | Description    |   |
|---------------|----------------|-----------------------|----------------|---|
|               | n/a            |                       |                |   |
| Response body | Data type      | Cardinality           | Response Codes | Description   |
|               | n/a            |                       | 204 No Content | Shall be returned when a particular version of an individual policy has been deleted successfully.<br><br>The response body shall be empty.   |
|               | ProblemDetails | 1                     | 409 Conflict   | Shall be returned upon the following error: The operation cannot be executed currently, due to a conflict with the state of the resource.<br><br>Typically, this is due to the fact that the requested version is the selected version.<br><br>The response body shall contain a ProblemDetails structure, in which the "detail" attribute shall convey more information about the error. |
|               | ProblemDetails | See clause 6.4 of [7] | 4xx/5xx        | In addition to the response codes defined above, any common error response code as defined in clause 6.4 of ETSI GS NFV-SOL 013 [7] may be returned.  |

## 5.5.7 Resource: Subscriptions

### 5.5.7.1 Description

This resource represents subscriptions. The API consumer can use this resource to subscribe to notifications related to policy changes and any detected policy conflicts, and to query its subscriptions.

### 5.5.7.2 Resource definition

The resource URI is:

**{apiRoot}/nfvpolicy/{apiMajorVersion}/subscriptions**

This resource shall support the resource URI variables defined in table 5.5.7.2-1.

**Table 5.5.7.2-1: Resource URI variables for this resource**

| Name            | Definition                                |
|-----------------|---|
| apiRoot         | See clause 4.1 of ETSI GS NFV-SOL 013 [7] |
| apiMajorVersion | See clause 5.2                            |

### 5.5.7.3 Resource methods

#### 5.5.7.3.1 POST

The POST method creates a new subscription.

This method shall follow the provisions specified in tables 5.5.7.3.1-1 and 5.5.7.3.1-2 for URI query parameters, request and response data structures, and response codes.

As the result of successfully executing this method, a new "Individual subscription" resource as defined in clause 5.5.6 shall have been created. This method shall not trigger any notification.

Creation of two subscription resources with the same callback URI and the same filter can result in performance degradation and will provide duplicates of notifications to the API consumer, and might make sense only in very rare use cases. Consequently, the API producer may either allow creating a subscription resource if another subscription resource with the same filter and callback URI already exists (in which case it shall return the "201 Created" response code), or may decide to not create a duplicate subscription resource (in which case it shall return a "303 See Other" response code referencing the existing subscription resource with the same filter and callback URI).

**Table 5.5.7.3.1-1: URI query parameters supported by the POST method on this resource**

| Name           | Cardinality | Description |
|----------------|-------------|-------------|
| none supported |             |             |

**Table 5.5.7.3.1-2: Details of the POST request/response on this resource**

| Request body  | Data type                 | Cardinality           | Description                                |   |
|---------------|---------------------------|-----------------------|--|---|
|               | PolicySubscriptionRequest | 1                     | Details of the subscription to be created. |   |
| Response body | Data type                 | Cardinality           | Response Codes                             | Description   |
|               | PolicySubscription        | 1                     | 201 Created                                | <p>Shall be returned when the subscription has been created successfully.</p> <p>A representation of the created subscription resource shall be returned in the response body, as defined in clause 5.6.2.6.</p> <p>The HTTP response shall include a "Location" HTTP header that points to the created "Individual subscription" resource.</p>   |
|               | n/a                       |                       | 303 See Other                              | <p>Shall be returned if a subscription with the same callbackUri and the same filter already exists and the policy of the API producer is to not create redundant subscriptions.</p> <p>The HTTP response shall include a "Location" HTTP header that contains the resource URI of the existing "individual subscription" resource.</p> <p>The response body shall be empty.</p>  |
|               | ProblemDetails            | 1                     | 422 Unprocessable Entity                   | <p>Shall be returned upon the following error: The content type of the payload body is supported and the payload body of a request contains syntactically correct data but the data cannot be processed. The general cause for this error and its handling is specified in clause 6.4 of ETSI GS NFV-SOL 013 [7], including rules for the presence of the response body.</p> <p>Specifically in case of this resource, the response code 422 shall also be returned if the API producer has tested the Notification endpoint as described in clause 5.5.9.3.2 and the test has failed.</p> <p>In this case, the "detail" attribute in the "ProblemDetails" structure shall convey more information about the error.</p> |
|               | ProblemDetails            | See clause 6.4 of [7] | 4xx/5xx                                    | In addition to the response codes defined above, any common error response code as defined in clause 6.4 of ETSI GS NFV-SOL 013 [7] may be returned.  |

### 5.5.7.3.2 GET

The GET method queries the list of active subscriptions of the functional block that invokes the method. It can be used e.g. for resynchronization after error situations.

This method shall follow the provisions specified in tables 5.5.7.3.2-1 and 5.5.7.3.2-2 for URI query parameters, request and response data structures, and response codes.

**Table 5.5.7.3.2-1: URI query parameters supported by the GET method on this resource**

| Name                   | Cardinality | Description   |
|------------------------|-------------|---|
| filter                 | 0..1        | Attribute-based filtering expression according to clause 5.2 of ETSI GS NFV-SOL 013 [7].<br><br>The API producer shall support receiving this parameter as part of the URI query string. The API consumer may supply this parameter.<br><br>All attribute names that appear in the PolicySubscription and in data types referenced from it shall be supported by the API producer in the filter expression. |
| nextpage_opaque_marker | 0..1        | Marker to obtain the next page of a paged response. Shall be supported by the API producer if the API producer supports alternative 2 (paging) according to clause 5.4.2.1 of ETSI GS NFV-SOL 013 [7] for this resource.  |

**Table 5.5.7.3.2-2: Details of the GET request/response on this resource**

| Request body  | Data type          | Cardinality | Description     |  |
|---------------|--------------------|-------------|-----------------|--|
|               | n/a                |             |                 |  |
| Response body | Data type          | Cardinality | Response Codes  | Description  |
|               | PolicySubscription | 0..N        | 200 OK          | Shall be returned when the list of subscriptions has been queried successfully.<br><br>The response body shall contain in an array the representations of all active subscriptions of the functional block that invokes the method, i.e. zero or more representations of policy subscriptions as defined in clause 5.6.2.6.<br><br>If the "filter" URI parameter was supplied in the request, the data in the response body shall have been transformed according to the rules specified in clause 5.2.2 of ETSI GS NFV-SOL 013 [7].<br>If the API producer supports alternative 2 (paging) according to clause 5.4.2.1 of ETSI GS NFV-SOL 013 [7] for this resource, inclusion of the Link HTTP header in this response shall follow the provisions in clause 5.4.2.3 of ETSI GS NFV-SOL 013 [7]. |
|               | ProblemDetails     | 1           | 400 Bad Request | Shall be returned upon the following error: Invalid attribute-based filtering expression.<br><br>The response body shall contain a ProblemDetails structure, in which the "detail" attribute should convey more information about the error.   |
|               | ProblemDetails     | 1           | 400 Bad Request | Shall be returned upon the following error: Response too big.<br><br>If the API producer supports alternative 1 (error) according to clause 5.4.2.1 of ETSI GS NFV-SOL 013 [7] for this resource, this error response shall follow the provisions in clause 5.4.2.2 of ETSI GS NFV-SOL 013 [7].  |

|  |                |                       |         |  |
|--|----------------|-----------------------|---------|--|
|  | ProblemDetails | See clause 6.4 of [7] | 4xx/5xx | In addition to the response codes defined above, any common error response code as defined in clause 6.4 of ETSI GS NFV-SOL 013 [7] may be returned. |
|--|----------------|-----------------------|---------|--|

#### 5.5.7.3.3 PUT

This method is not supported. When this method is requested on this resource, the API producer shall return a "405 Method Not Allowed" response as defined in clause 6.4 of ETSI GS NFV-SOL 013 [7].

#### 5.5.7.3.4 PATCH

This method is not supported. When this method is requested on this resource, the API producer shall return a "405 Method Not Allowed" response as defined in clause 6.4 of ETSI GS NFV-SOL 013 [7].

#### 5.5.7.3.5 DELETE

This method is not supported. When this method is requested on this resource, the API producer shall return a "405 Method Not Allowed" response as defined in clause 6.4 of ETSI GS NFV-SOL 013 [7].

### 5.5.8 Resource: Individual subscription

#### 5.5.8.1 Description

This resource represents an individual subscription.

The API consumer can use this resource to read and to terminate a subscription to notifications related to policy management.

#### 5.5.8.2 Resource definition

The resource URI is:

**{apiRoot}/nfvpolicy/{apiMajorVersion}/subscriptions/{subscriptionId}**

This resource shall support the resource URI variables defined in table 5.5.8.2-1.

**Table 5.5.8.2-1: Resource URI variables for this resource**

| Name            | Definition  |
|-----------------|---|
| apiRoot         | See clause 4.1 of ETSI GS NFV-SOL 013 [7].  |
| apiMajorVersion | See clause 5.2.   |
| subscriptionId  | Identifier of the subscription. See note.   |
| NOTE:           | This identifier can be retrieved from the resource referenced by the "Location" HTTP header in the response to a POST request creating a new "Individual subscription" resource. It can also be retrieved from the "id" attribute in the payload body of that response. |

#### 5.5.8.3 Resource methods

##### 5.5.8.3.1 POST

This method is not supported. When this method is requested on this resource, the API producer shall return a "405 Method Not Allowed" response as defined in clause 6.4 of ETSI GS NFV-SOL 013 [7].



### 5.5.8.3.2 GET

The GET method retrieves information about a subscription by reading an "Individual subscription" resource.

This method shall follow the provisions specified in tables 5.5.8.3.2-1 and 5.5.8.3.2-2 for URI query parameters, request and response data structures, and response codes.

**Table 5.5.8.3.2-1: URI query parameters supported by the GET method on this resource**

| Name           | Cardinality | Description |
|----------------|-------------|-------------|
| none supported |             |             |

**Table 5.5.8.3.2-2: Details of the GET request/response on this resource**

| Request body  | Data type          | Cardinality           | Description    |   |
|---------------|--------------------|-----------------------|----------------|---|
|               | n/a                |                       |                |   |
| Response body | Data type          | Cardinality           | Response Codes | Description   |
|               | PolicySubscription | 1                     | 200 OK         | Shall be returned when information about an individual subscription has been read successfully.<br><br>The response body shall contain a representation of the subscription resource, as defined in clause 5.6.2.6. |
|               | ProblemDetails     | See clause 6.4 of [7] | 4xx/5xx        | In addition to the response codes defined above, any common error response code as defined in clause 6.4 of ETSI GS NFV-SOL 013 [7] may be returned.  |

### 5.5.8.3.3 PUT

This method is not supported. When this method is requested on this resource, the API producer shall return a "405 Method Not Allowed" response as defined in clause 6.4 of ETSI GS NFV-SOL 013 [7].

### 5.5.8.3.4 PATCH

This method is not supported. When this method is requested on this resource, the API producer shall return a "405 Method Not Allowed" response as defined in clause 6.4 of ETSI GS NFV-SOL 013 [7].

### 5.5.8.3.5 DELETE

The DELETE method terminates an individual subscription.

This method shall follow the provisions specified in tables 5.5.8.3.5-1 and 5.5.8.3.5-2 for URI query parameters, request and response data structures, and response codes.

As the result of successfully executing this method, the "Individual subscription" resource shall not exist any longer. This means that no notifications for that subscription shall be sent to the formerly-subscribed API consumer.

NOTE: Due to race conditions, some notifications can still be received by the formerly-subscribed API consumer for a certain time period after the deletion.

**Table 5.5.8.3.5-1: URI query parameters supported by the DELETE method on this resource**

| Name           | Cardinality | Description |
|----------------|-------------|-------------|
| none supported |             |             |

**Table 5.5.8.3.5-2: Details of the DELETE request/response on this resource**

| Request body  | Data type      | Cardinality           | Description    |  |
|---------------|----------------|-----------------------|----------------|--|
|               | n/a            |                       |                |  |
| Response body | Data type      | Cardinality           | Response Codes | Description  |
|               | n/a            |                       | 204 No Content | Shall be returned when the "individual subscription" resource has been deleted successfully.<br>The response body shall be empty.                    |
|               | ProblemDetails | See clause 6.4 of [7] | 4xx/5xx        | In addition to the response codes defined above, any common error response code as defined in clause 6.4 of ETSI GS NFV-SOL 013 [7] may be returned. |

## 5.5.9 Resource: Notification endpoint

### 5.5.9.1 Description

This resource represents a notification endpoint for policy management.

The API producer can use this resource to send notifications related to policy management events to a subscribed API consumer, which has provided the URI of this resource during the subscription process.

### 5.5.9.2 Resource definition

The resource URI is provided by the API consumer when creating the subscription.

This resource shall support the resource URI variables defined in table 5.5.9.2-1.

**Table 5.5.9.2-1: Resource URI variables for this resource**

| Name | Definition |
|------|------------|
| n/a  |            |

### 5.5.9.3 Resource methods

#### 5.5.9.3.1 POST

The POST method delivers a notification regarding a policy management event from the API producer to an API consumer. The API consumer shall have previously created an "Individual subscription" resource with a matching filter.

This method shall follow the provisions specified in tables 5.5.9.3.1-1 and 5.5.9.3.1-2 for URI query parameters, request and response data structures, and response codes.

**Table 5.5.9.3.1-1: URI query parameters supported by the POST method on this resource**

| Name           | Cardinality | Description |
|----------------|-------------|-------------|
| none supported |             |             |

Each notification request body shall include exactly one of the alternatives defined in table 5.5.9.3.1-2.

**Table 5.5.9.3.1-2: Details of the POST request/response on this resource**

| Request body  | Data type                  | Cardinality           | Description                                      |  |
|---------------|----------------------------|-----------------------|--|--|
|               | PolicyChangeNotification   | 1                     | A notification about policy changes.             |  |
|               | PolicyConflictNotification | 1                     | A notification about a detected policy conflict. |  |
| Response body | Data type                  | Cardinality           | Response Codes                                   | Description  |
|               | n/a                        |                       | 204 No Content                                   | Shall be returned when the notification has been delivered successfully.   |
|               | ProblemDetails             | See clause 6.4 of [7] | 4xx/5xx  | In addition to the response codes defined above, any common error response code as defined in clause 6.4 of ETSI GS NFV-SOL 013 [7] may be returned. |

### 5.5.9.3.2 GET

The GET method allows the API producer to test the notification endpoint that is provided by the API consumer, e.g. during subscription.

This method shall follow the provisions specified in tables 5.5.9.3.2-1 and 5.5.9.3.2-2 for URI query parameters, request and response data structures, and response codes.

**Table 5.5.9.3.2-1: URI query parameters supported by the GET method on this resource**

| Name           | Cardinality | Description |
|----------------|-------------|-------------|
| none supported |             |             |

**Table 5.5.9.3.2-2: Details of the GET request/response on this resource**

| Request body  | Data type      | Cardinality           | Description    |  |
|---------------|----------------|-----------------------|----------------|--|
|               | n/a            |                       |                |  |
| Response body | Data type      | Cardinality           | Response Codes | Description  |
|               | n/a            |                       | 204 No Content | Shall be returned to indicate that the notification endpoint has been tested successfully.<br><br>The response body shall be empty.                  |
|               | ProblemDetails | See clause 6.4 of [7] | 4xx/5xx        | In addition to the response codes defined above, any common error response code as defined in clause 6.4 of ETSI GS NFV-SOL 013 [7] may be returned. |

### 5.5.9.3.3 PUT

This method is not supported. When this method is requested on this resource, the API consumer shall return a "405 Method Not Allowed" response as defined in clause 6.4 of ETSI GS NFV-SOL 013 [7].

### 5.5.9.3.4 PATCH

This method is not supported. When this method is requested on this resource, the API consumer shall return a "405 Method Not Allowed" response as defined in clause 6.4 of ETSI GS NFV-SOL 013 [7].

### 5.5.9.3.5 DELETE

This method is not supported. When this method is requested on this resource, the API consumer shall return a "405 Method Not Allowed" response as defined in clause 6.4 of ETSI GS NFV-SOL 013 [7].

## 5.6 Data model

### 5.6.1 Introduction

This clause defines the request and response data structures of the policy management interface. If a request or response contains attributes not defined in the present document, a receiving functional block that does not understand these attributes shall not treat their presence as an error and may choose to ignore them.

This clause does not define a data model for the policy content.

### 5.6.2 Resource and notification data types

#### 5.6.2.1 Introduction

This clause defines the data structures to be used in resource representations and notifications.

#### 5.6.2.2 Type: CreatePolicyRequest

This type represents request parameters for creating a policy. It shall comply with the provisions defined in table 5.6.2.2-1.

**Table 5.6.2.2-1: Definition of the CreatePolicyRequest data type**

| Attribute name  | Data type  | Cardinality | Description  |
|---|------------|-------------|--|
| designer  | String     | 1           | Human readable name of the designer of the policy.   |
| name  | String     | 1           | Human readable name of the policy.   |
| pflid   | Identifier | 0..1        | Identifier of the Policy Function (PF) which enforces the policy.<br>Shall be present when the PF is not the API producer and shall be absent otherwise.<br>Shall be absent when the API producer is NFVO-N.<br>More information concerning the PF can be found in ETSI GR NFV-IFA 023 [i.2].<br>See note 1.   |
| associations  | Identifier | 0..N        | Initial value of the "associations" attribute in the "Policy" data structure which represents the policy.<br>Shall be absent when the association feature is not applicable for the PF, i.e. the target information in the policy content defined by the "targetType" attribute of the "Policy" information element specified in clause 5.2 of ETSI GS NFV-IFA 048 [8] is equal to "COMMON".<br>See note 2 and note 3. |
| NOTE 1: For example, the PF can be a VNFM or VIM when the API producer is an NFVO.  |            |             |  |
| NOTE 2: The associations refer to identifiers of entities that the PF manages. E.g. if the PF is a VNFM, the policy can associate to VNF instances; if the PF is NFVO, the policy can associate to an NS instances. |            |             |  |
| NOTE 3: How the PF determines the scope of applicability of the policy when this attribute is absent is outside the scope of the present document.  |            |             |  |

### 5.6.2.3 Type: Policy

This type represents an individual policy. It shall comply with the provisions defined in table 5.6.2.3-1.

**Table 5.6.2.3-1: Definition of the Policy data type**

| Attribute name  | Data type           | Cardinality | Description  |
|---|---------------------|-------------|--|
| id  | Identifier          | 1           | Identifier of the policy.  |
| designer  | String              | 1           | Human readable name of the designer of the policy.   |
| name  | String              | 1           | Human readable name of the policy.   |
| pflid   | Identifier          | 0..1        | Identifier of the Policy Function (PF) which enforces the policy.<br>Shall be present when the PF is not the API producer and shall be absent otherwise.<br>Shall be absent when the API producer is NFVO-N.<br>More information concerning the PF can be found in ETSI GR NFV-IFA 023 [i.2]. See note 1.  |
| versions  | Version             | 0..N        | Versions of the policy. Shall be present if at least one version of the policy has been transferred. Its value shall be the same as the version present in the actual policy content as defined by the "policyVersion" attribute in the "Policy" information element specified in clause 5.2 of ETSI GS NFV-IFA 048 [8].   |
| selectedVersion   | Version             | 0..1        | Selected version of the policy. Shall be present if one or more versions of the policy have been transferred. The "versions" attribute provides available values of versions of transferred policies.  |
| activationStatus  | ActivationStatus    | 1           | Status of the policy on whether it is activated or deactivated.  |
| transferStatus  | TransferStatus      | 1           | Status of the policy on whether the content of the policy has been transferred.  |
| associations  | Identifier          | 0..N        | Identifiers of the entities that the PF manages and to which the policy associates to.<br>Shall be absent when the association feature is not applicable for the PF, i.e. the target information in the policy content defined by the "targetType" attribute of the "Policy" information element specified in clause 5.2 of ETSI GS NFV-IFA 048 [8] is equal to "COMMON".<br>An initial set of associations applicable to a policy to be set by the API producer may either be provided by the "associations" attribute in the "CreatePolicyRequest" or by the actual policy content via the "targetObjectId" attribute of the "Policy" information element specified in clause 5.2 of ETSI GS NFV-IFA 048 [8].<br>Values of the "associations" attribute can be further modified with the PATCH method.<br>See note 2 and note 3. |
| _links  | Structure (inlined) | 1           | Links for this resource.   |
| >self   | Link                | 1           | URI of this resource.  |
| >selected   | Link                | 0..1        | URI of the selected version of this policy, if exists.   |
| >versions   | Link                | 0..N        | URIs of all the transferred versions of this policy, if exists.  |
| NOTE 1: For example, the PF can be a VNFM or VIM when the API producer is an NFVO.  |                     |             |  |
| NOTE 2: The associations refer to identifiers of entities that the PF manages. E.g. if the PF is a VNFM, the policy can associate to VNF instances; if the PF is NFVO, the policy can associate to an NS instances. |                     |             |  |
| NOTE 3: How the PF determines the scope of applicability of the policy when this attribute is absent is outside the scope of the present document.  |                     |             |  |

#### 5.6.2.4 Type: PolicyModifications

This type represents the parameters for modifying a policy. It shall comply with the provisions defined in table 5.6.2.4-1.

**Table 5.6.2.4-1: Definition of the PolicyModifications data type**

| Attribute name  | Data type        | Cardinality | Description  |
|---|------------------|-------------|--|
| activationStatus  | ActivationStatus | 0..1        | New activation status of the policy.   |
| selectedVersion   | Version          | 0..1        | New version of the policy to be selected.  |
| addAssociations   | Identifier       | 0..N        | Identifiers of entities to be added to the "associations" attribute in the "Policy" data structure which represents the policy.<br>The API producer shall ignore the identifiers that already exist in the "associations" attribute in the "Policy" data structure. Shall be absent when the association feature is not applicable for the PF.                                 |
| removeAssociations  | Identifier       | 0..N        | Identifiers of entities to be removed from the "associations" attribute in the "Policy" data structure which represents the policy.<br>The API producer shall ignore the identifiers that do not exist in the "associations" attribute in the "Policy" data structure.<br>Shall be absent when the association feature is not applicable for the PF.<br>See note 1 and note 2. |
| removeAllAssociations   | Boolean          | 0..1        | Shall be set to TRUE if the policy is no longer associated to any specific entities managed by the PF.<br>Shall be absent when the association feature is not applicable for the PF.<br>See note 1 and note 2.   |
| NOTE 1: If "removeAllAssociations" is set to TRUE, neither "addAssociations" nor "removeAssociations" attributes shall be present.                            |                  |             |  |
| NOTE 2: Once all associations have been removed, how the PF determines the scope of applicability of the policy is outside the scope of the present document. |                  |             |  |

#### 5.6.2.5 Type: PolicySubscriptionRequest

This type represents a subscription request related to notifications about policy changes and policy conflicts. It shall comply with the provisions defined in table 5.6.2.5-1.

**Table 5.6.2.5-1: Definition of the PolicySubscriptionRequest data type**

| Attribute name | Data type                  | Cardinality | Description  |
|----------------|----------------------------|-------------|--|
| filter         | PolicyNotificationsFilter  | 0..1        | Filter settings for this subscription, to define the subset of all notifications this subscription relates to. A particular notification is sent to the subscriber if the filter matches, or if there is no filter.  |
| callbackUri    | Uri                        | 1           | The URI of the endpoint to send the notification to.   |
| authentication | SubscriptionAuthentication | 0..1        | Authentication parameters to configure the use of Authorization when sending notifications corresponding to this subscription, as defined in clause 8.3.4 of ETSI GS NFV-SOL 013 [7].<br><br>This attribute shall only be present if the subscriber requires authorization of notifications. |

### 5.6.2.6 Type: PolicySubscription

This type represents a subscription related to notifications about policy changes and policy conflicts. It shall comply with the provisions defined in table 5.6.2.6-1.

**Table 5.6.2.6-1: Definition of the PolicySubscription data type**

| Attribute name | Data type                 | Cardinality | Description   |
|----------------|---------------------------|-------------|---|
| id             | Identifier                | 1           | Identifier of this subscription resource.   |
| filter         | PolicyNotificationsFilter | 0..1        | Filter settings for this subscription, to define the subset of all notifications this subscription relates to. A particular notification is sent to the subscriber if the filter matches, or if there is no filter. |
| callbackUri    | Uri                       | 1           | The URI of the endpoint to send the notification to.  |
| _links         | Structure (inlined)       | 1           | Links for this resource.  |
| >self          | Link                      | 1           | URI of this resource.   |

### 5.6.2.7 Type: PolicyChangeNotification

This type represents a notification about policy change. It shall comply with the provisions defined in table 5.6.2.7-1.

This notification shall be triggered by the API producer when a policy has been changed as the result of an operation of creating, transferring, deleting or modifying a policy.

**Table 5.6.2.7-1: Definition of the PolicyChangeNotification data type**

| Attribute name          | Data type           | Cardinality | Description  |
|-------------------------|---------------------|-------------|--|
| id                      | Identifier          | 1           | Identifier of this notification. If a notification is sent multiple times due to multiple subscriptions, the "id" attribute of all these notifications shall have the same value.  |
| notificationType        | String              | 1           | Discriminator for the different notification types. Shall be set to "PolicyChangeNotification" for this notification type.   |
| subscriptionId          | Identifier          | 1           | Identifier of the subscription that this notification relates to.  |
| timeStamp               | DateTime            | 1           | Date and time of the generation of the notification.   |
| policyId                | Identifier          | 1           | Identifier of the policy.  |
| affectedVersion         | Version             | 0..1        | Affected version of the policy. The value is the version identifier in the URI when a particular version of the policy is transferred or deleted, or the selected version of the policy when the policy is activated/deactivated/modified. Shall be present when a particular version of the policy is impacted by the policy management operation. Shall be absent otherwise. |
| previousSelectedVersion | Version             | 0..1        | The previous selected version of the policy. Shall be present when another version of the policy has been selected. Shall be absent otherwise.   |
| policyModifications     | PolicyModifications | 0..1        | Information about the modifications of the policy. Shall be present when the changeType equals to "MODIFY_POLICY". Shall be absent otherwise.  |
| changeType              | PolicyOperationType | 1           | Policy management operation that cause the change of the policy.   |
| _links                  | Structure (inlined) | 1           | Links to resources related to this notification.   |
| >subscription           | NotificationLink    | 1           | Link to the related subscription.  |
| >objectInstance         | NotificationLink    | 0..1        | Link to the resource representing the policies to which the notified change applies. Shall be present if the policy is accessible as a resource.   |

### 5.6.2.8 Type: PolicyConflictNotification

This type represents a notification about policy conflict. It shall comply with the provisions defined in table 5.6.2.8-1.

This notification shall be triggered by the API producer when a policy conflict is detected, and any of the policies specified in an associated notification subscription is impacted by the conflict.

**Table 5.6.2.8-1: Definition of the PolicyConflictNotification data type**

| Attribute name      | Data type           | Cardinality | Description   |
|---------------------|---------------------|-------------|---|
| id                  | Identifier          | 1           | Identifier of this notification. If a notification is sent multiple times due to multiple subscriptions, the "id" attribute of all these notifications shall have the same value. |
| notificationType    | String              | 1           | Discriminator for the different notification types. Shall be set to "PolicyConflictNotification" for this notification type.  |
| subscriptionId      | Identifier          | 1           | Identifier of the subscription that this notification relates to.   |
| timeStamp           | DateTime            | 1           | Date and time of the generation of the notification.  |
| policyIds           | Identifier          | 2..N        | Identifiers of the conflicting policies. See note.  |
| selectedVersions    | Version             | 2..N        | Selected versions of the conflicting policies. See note.  |
| conflictDescription | String              | 1           | Description of the detected policy conflicts, e.g. conflicting events, conditions or actions among the policies.  |
| links               | Structure (inlined) | 1           | Links to resources related to this notification.  |
| >subscription       | NotificationLink    | 1           | Link to the related subscription.   |
| >objectInstances    | NotificationLink    | 2..N        | Link to the resources representing the policies to which the notified conflict applies.   |

NOTE: The policy identifier and the corresponding selected version are mapped by the order in the array.

## 5.6.3 Referenced structured data types

### 5.6.3.1 Introduction

This clause defines data structures that can be referenced from data structures defined in the previous clauses, but can neither be resource representations nor bound to any subscribe/notify mechanism.

### 5.6.3.2 Type: PolicyNotificationsFilter

This type represents a subscription filter related to notifications about policy changes and policy conflicts. It shall comply with the provisions defined in table 5.6.3.2-1.

At a particular nesting level in the filter structure, the following applies: All attributes shall match in order for the filter to match (logical "and" between different filter attributes). If an attribute is an array, the attribute shall match if at least one of the values in the array matches (logical "or" between the values of one filter attribute).



**Table 5.6.3.2-1: Definition of the PolicyNotificationsFilter data type**

| Attribute name   | Data type           | Cardinality | Description  |
|--|---------------------|-------------|--|
| notificationTypes  | Enum (inlined)      | 0..N        | Match particular notification types.<br><br>Permitted values:<br>- PolicyChangeNotification<br>- PolicyConflictNotification<br>See note 1. |
| policyIds  | Identifier          | 0..N        | Match particular policy identifiers.<br>See note 2.  |
| changeTypes  | PolicyOperationType | 0..N        | Match particular policy management operation types that cause the change of the policy.  |
| NOTE 1: The permitted values of the "notificationTypes" attribute are spelled exactly as the names of the notification types to facilitate automated code generation systems.      |                     |             |  |
| NOTE 2: For "PolicyConflictNotification", the notification is sent if any of the policies specified in the subscription is impacted by the conflict, as defined in clause 5.6.2.8. |                     |             |  |

## 5.6.4 Referenced simple data types and enumerations

### 5.6.4.1 Introduction

This clause defines simple data types and enumerations that can be referenced from data structures defined in the previous clauses.

### 5.6.4.2 Simple data types

No particular simple data types are defined for this interface, in addition to those defined in clause 4.2.

### 5.6.4.3 Enumeration: ActivationStatus

The enumeration ActivationStatus shall comply with the provisions defined in table 5.6.4.3-1. It indicates the activation status of a policy.

**Table 5.6.4.3-1: Enumeration ActivationStatus**

| Enumeration value | Description                              |
|-------------------|--|
| ACTIVATED         | The status of the policy is activated.   |
| DEACTIVATED       | The status of the policy is deactivated. |

### 5.6.4.4 Enumeration: TransferStatus

The enumeration TransferStatus shall comply with the provisions defined in table 5.6.4.4-1. It indicates the transfer status of a policy.

**Table 5.6.4.4-1: Enumeration TransferStatus**

| Enumeration value | Description  |
|-------------------|--|
| CREATED           | No version of the policy has been transferred.   |
| TRANSFERRED       | At least one version of the policy has been transferred, and is available on the API producer. |

### 5.6.4.5 Enumeration: PolicyOperationType

The enumeration PolicyOperationType shall comply with the provisions defined in table 5.6.4.5-1. It indicates the type of the policy change.

**Table 5.6.4.5-1: Enumeration PolicyOperationType**

| Enumeration value | Description                |
|-------------------|----------------------------|
| CREATE_POLICY     | The policy is created.     |
| TRANSFER_POLICY   | The policy is transferred. |
| DELETE_POLICY     | The policy is deleted.     |
| MODIFY_POLICY     | The policy is modified.    |

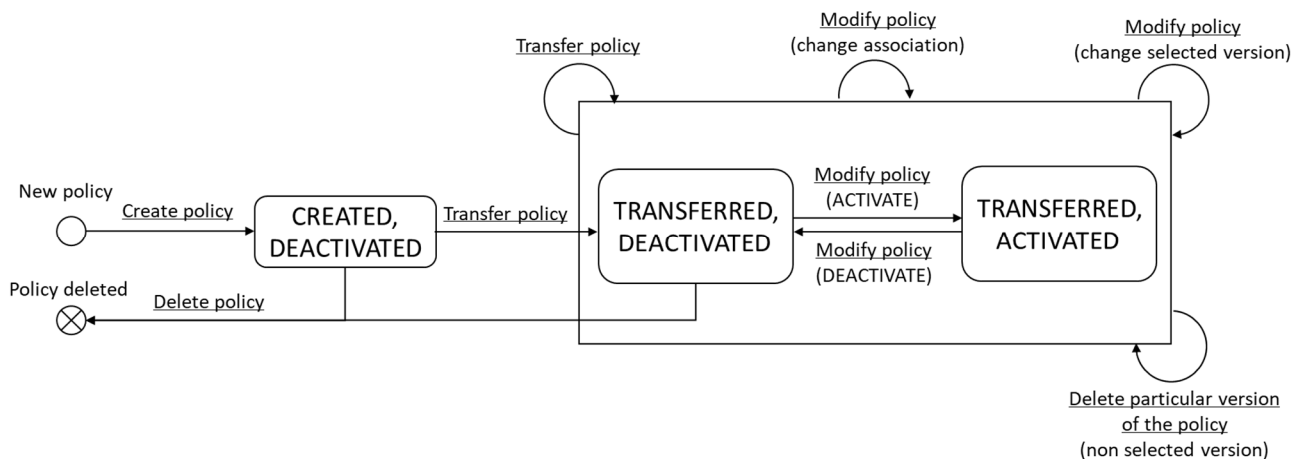
## 5.7 Policy management state model and error handling

### 5.7.1 Introduction

This clause describes the state model of the policy management. In addition, during the policy management procedures, failures can occur. This clause describes also how to handle errors during the policy management operations.

### 5.7.2 States and state transitions

The API producer shall support the policy management states and state transition specified below. The states and state transitions are also illustrated in figure 5.7.2-1.

**Figure 5.7.2-1: States and state transition of the policy management**

**CREATED/DEACTIVATED:** The "Individual policy" resource has been created. This state has the following characteristics:

- This is the initial state after the successful completion of the POST request to the "Policies" resource.
- The API consumer can send a GET request to the "Individual policy" resource to query the information of the policy.
- If the API consumer sends a PUT request to the "Particular version of an individual policy" resource, upon successful handling of the transfer of the policy content, the "Particular version of an individual policy" resource and the "Selected version of an individual policy" resource are created, the state of the "Individual policy" resource shall transit to the "TRANSFERRED/DEACTIVATED" state and the "Selected version of and individual policy" shall refer to the created "Particular version of an individual policy" resource.
- A successful handling of the DELETE request to the "Individual policy" resource will delete the "Individual policy" resource.

**TRANSFERRED/DEACTIVATED:** The content of the policy has been uploaded, and the policy is not enforced. This state has the following characteristics:

- The API consumer can send a PUT request to the "Particular version of an individual policy" resource to transfer a new version of the policy to the API producer. Upon successful handling of the transfer of the policy content, a new "Particular version of an individual policy" resource is created.
- The API consumer can send a GET request to the "Individual policy" resource to query the information of the policy.
- The API consumer can send a GET request to the "Particular version of an individual policy" resource or to the "Selected version of an individual policy" resource to fetch the content of a particular or selected version of the policy.
- The API consumer can send a PATCH request to the "Individual policy" resource with the payload body containing the "activationStatus=ACTIVATED" attribute to activate the policy. Upon successful handling of the request, the state of the "Individual policy" resource shall transit to the "TRANSFERRED/ACTIVATED" state. If the request payload body also contains a valid "selectedVersion" attribute, the proposed version is enforced, and if not, the current selected version of the policy is enforced.
- The API consumer can send a PATCH request to the "Individual policy" resource with the payload body containing the "selectedVersion" attribute to change the selected version of the policy.
- The API consumer can send a PATCH request to the "Individual policy" resource with the payload body containing the "associations" attribute to change the associations of the policy.
- A successful handling of the DELETE request to the "Individual policy" resource will delete the "Individual policy" resource.
- A successful handling of the DELETE request to the "Particular version of an individual policy" resource will delete the "Particular version of an individual policy" resource.

**TRANSFERRED/ACTIVATED:** The content of the policy has been uploaded, and the policy is enforced. This state has the following characteristics:

- The API consumer can send a PUT request to the "Particular version of an individual policy" resource to transfer a new version of the policy to the API producer. Upon successful handling of the transfer of the policy content, a new "Particular version of an individual policy" resource is created.
- The API consumer can send a GET request to the "Individual policy" resource to query the information of the policy.
- The API consumer can send a GET request to the "Particular version of an individual policy" resource or to the "Selected version of an individual policy" resource to fetch the content of a particular or selected version of the policy.
- The API consumer can send a PATCH request to the "Individual policy" resource with the payload body containing the "activationStatus=DEACTIVATED" attribute to deactivate the policy. Upon successful handling of the request, the state of the "Individual policy" resource shall transit to the "TRANSFERRED/DEACTIVATED" state.
- The API consumer can send a PATCH request to the "Individual policy" resource with the payload body containing the "selectedVersion" attribute to change the selected version of the policy. The new selected version shall be enforced if the state of the policy is not changed.
- The API consumer can send a PATCH request to the "Individual policy" resource with the payload body containing the "associations" attribute to change the associations of the policy.
- This state shall block the request to delete the "Individual policy" resource.
- A successful handling of the DELETE request to the "Particular version of an individual policy" resource will delete the "Particular version of an individual policy" resource.

### 5.7.3 Handling of errors

#### 5.7.3.1 Failure during transfer of the policy content

Upon a failure during the transfer, the "Individual policy" resource will remain in its state before transferring the policy:

- The API producer shall discard the transferred content, and delete the newly created "Particular version of an individual policy" resource.
- To resolve the failure, the API consumer may retry the PUT request to the same or another "Particular version of an individual policy" resource, or send a PUT request with a new payload body.

## Annex A (informative): Mapping operations to protocol elements

This annex provides the mapping between policy management operations as defined in ETSI GS NFV-IFA 005 [1], ETSI GS NFV-IFA 006 [2], ETSI GS NFV-IFA 007 [3], ETSI GS NFV-IFA 008 [4], ETSI GS NFV-IFA 013 [5] and ETSI GS NFV-IFA 030 [6], and the corresponding resources and HTTP methods defined in the present document.

Table A-1 provides the mapping between the operations and corresponding resources and HTTP methods for the policy management interface.

**Table A-1: Mapping for the policy management interface**

| ETSI GS NFV-IFA spec operation (see note)   | HTTP method | Resource   | Direction                   |
|---|-------------|--|-----------------------------|
| Transfer policy   | POST        | nfvpolicy/{apiMajorVersion}/policies                               | API consumer → API producer |
|   | PUT         | nfvpolicy/{apiMajorVersion}/policies/{policyId}/versions/{version} | API consumer → API producer |
| Delete policy   | DELETE      | nfvpolicy/{apiMajorVersion}/policies/{policyId}                    | API consumer → API producer |
|   | DELETE      | nfvpolicy/{apiMajorVersion}/policies/{policyId}/versions/{version} | API consumer → API producer |
| Query policy  | GET         | nfvpolicy/{apiMajorVersion}/policies                               | API consumer → API producer |
|   | GET         | nfvpolicy/{apiMajorVersion}/policies/{policyId}                    | API consumer → API producer |
|   | GET         | nfvpolicy/{apiMajorVersion}/policies/{policyId}/selected_version   | API consumer → API producer |
|   | GET         | nfvpolicy/{apiMajorVersion}/policies/{policyId}/versions/{version} | API consumer → API producer |
| Activate policy   | PATCH       | nfvpolicy/{apiMajorVersion}/policies/{policyId}                    | API consumer → API producer |
| Deactivate policy   | PATCH       | nfvpolicy/{apiMajorVersion}/policies/{policyId}                    | API consumer → API producer |
| Associate policy  | PATCH       | nfvpolicy/{apiMajorVersion}/policies/{policyId}                    | API consumer → API producer |
| Disassociate policy   | PATCH       | nfvpolicy/{apiMajorVersion}/policies/{policyId}                    | API consumer → API producer |
| Subscribe   | POST        | nfvpolicy/{apiMajorVersion}/subscriptions                          | API consumer → API producer |
| Terminate Subscription  | DELETE      | nfvpolicy/{apiMajorVersion}/subscriptions/{subscriptionId}         | API consumer → API producer |
| Notify  | POST        | (provided by API consumer)   | API producer → API consumer |
| Query Subscription Information  | GET         | nfvpolicy/{apiMajorVersion}/subscriptions                          | API consumer → API producer |
|   | GET         | nfvpolicy/{apiMajorVersion}/subscriptions/{subscriptionId}         | API consumer → API producer |
| NOTE: Transfer policy, delete policy, query policy, activate policy, deactivate policy, subscribe, terminate subscription, notify and query subscription information operations are defined in ETSI GS NFV-IFA 005 [1], ETSI GS NFV-IFA 006 [2], ETSI GS NFV-IFA 007 [3], ETSI GS NFV-IFA 008 [4], ETSI GS NFV-IFA 013 [5] and ETSI GS NFV-IFA 030 [6]. Associate policy and disassociate policy operations are defined in ETSI GS NFV-IFA 007 [3], ETSI GS NFV-IFA 008 [4], ETSI GS NFV-IFA 013 [5] and ETSI GS NFV-IFA 030 [6]. |             |  |                             |

## Annex B (normative): Authorization scope values

### B.1 Overview

This annex specifies authorization scope values for selected APIs defined in the present document as defined in clause 8.3.7 of ETSI GS NFV-SOL 013 [7]. Each authorization scope value is defined recursively as the union of a set of permitted resource URIs with associated permitted methods, and a set of permitted referenced authorization scope values, where one of these sets can be empty.

### B.2 Policy Management interface

This clause specifies authorization scope values to consume the Policy Management interface specified in clause 5. If the API producer supports authorization scope values, the API producer shall support the authorization scope values specified in table B.2-1 and may support additional authorization scope values, when authorizing an API request from an API consumer as specified in clause 8.3.3 of ETSI GS NFV-SOL 013 [7].

The elements in the authorization scope value definition specified in clause 8.3.7 of ETSI GS NFV-SOL 013 [7] are defined as follows, resulting in the authorization scope values given in table B.2-1:

- {apiName} is set as defined in clause 5.3;
- <vn> shall be set to the value of {apiMajorVersion} as defined in clause 5.2;
- <permissionName> and <qualifier> are set as defined in table B.2-1.

**Table B.2-1: Authorization scope values for Policy Management interface**

| Authorization Scope value                | Description  |
|--|--|
| nfvpolicy:<vn>:policies                  | Allows to read the "Policies" resource, and to create, read, modify and delete its child resources.<br>This permission allows to create an "Individual policy" resource as indicated in clause 5.4.1, query/read information in one or multiple "Individual policy" resource as indicated in clause 5.4.3, modify an "Individual policy" resource as indicated in clause 5.4.5, and delete an "Individual policy" resource as indicated in clause 5.4.6. |
| nfvpolicy:<vn>:policies:readonly         | Allows read only access to the "Policies" resource and its child resources, but not to modify, create and delete them.   |
| nfvpolicy:<vn>:selected_version:readonly | Allows to read the "Selected version of an individual policy" resource.<br>This permission allows to fetch the content of a policy as indicated in clause 5.4.5.   |
| nfvpolicy:<vn>:versions                  | Allows to access the "Particular version of an individual policy" resource.<br>This permission allows to fetch the content of a policy as indicated in clause 5.4.4, transfer a policy as indicated in clause 5.4.2, and delete a policy as indicated in clause 5.4.6.   |
| nfvpolicy:<vn>:versions:readonly         | Allows read only access to the "Particular version of an individual policy" resource, but not to transfer and delete it.   |
| nfvpolicy:<vn>:subscriptions             | Allows to read the "Subscriptions" resource, and to create, read and delete its child resources.<br>This permission allows managing subscriptions as indicated in clause 5.4.7.  |
| nfvpolicy:<vn>:all                       | Allows to perform all methods on all resources of the Policy management interface.   |
| nfvpolicy:<vn>:all:readonly              | Allows read only access to all resources of the Policy management interface.   |

Table B.2-2 defines the authorization scope values that are applicable to the Policy Management interface.

**Table B.2-2: Resource and permission of authorization scope for Policy Management interface**

| Authorization scope value  | Resources and scopes                     | Permitted methods  |
|--|--|--------------------|
| nfvpolicy:<vn>:policies  | /policies                                | GET, POST          |
|  | /policies/{policyId}                     | GET, PATCH, DELETE |
| nfvpolicy:<vn>:policies:readonly   | /policies                                | GET                |
|  | /policies/{policyId}                     | GET                |
| nfvpolicy:<vn>:selected_version:readonly   | /policies/{policyId}/selected_version    | GET                |
| nfvpolicy:<vn>:versions  | /policies/{policyId}/versions/{version}  | GET, PUT, DELETE   |
|  | nfvpolicy:<vn>:policies                  | -                  |
| nfvpolicy:<vn>:versions:readonly   | /policies/{policyId}/versions/{version}  | GET                |
|  | nfvpolicy:<vn>:policies:readonly         | -                  |
| nfvpolicy:<vn>:subscriptions   | /subscriptions                           | GET, POST          |
|  | /subscriptions/{subscriptionId}          | GET, DELETE        |
| nfvpolicy:<vn>:all   | nfvpolicy:<vn>:policies                  | -                  |
|  | nfvpolicy:<vn>:selected_version:readonly | -                  |
|  | nfvpolicy:<vn>:versions                  | -                  |
|  | nfvpolicy:<vn>:subscriptions             | -                  |
| nfvpolicy:<vn>:all:readonly  | nfvpolicy:<vn>:policies:readonly         | -                  |
|  | nfvpolicy:<vn>:selected_version:readonly | -                  |
|  | nfvpolicy:<vn>:versions:readonly         | -                  |
|  | nfvpolicy:<vn>:subscriptions (see note)  | -                  |
| NOTE: The "readonly" authorization scope value allows to create and delete operations on "nfvpolicy:<vn>:subscriptions" as described in clause 8.3.7 of ETSI GS NFV-SOL 013 [7]. |  |                    |

---

## Annex C (informative): Complementary material for API utilization

To complement the definitions of each method, resource, and data type defined in the main body of the present document, the ETSI NFV ISG is providing supplementary description files, compliant to the OpenAPI™ Specification [i.3], for the policy management interface. These supplementary description files, containing the OpenAPI specification for each API defined in the present document, are located at <https://forge.etsi.org/rep/nfv/SOL012>.

In case of discrepancies between the supplementary files and the related data structure definitions in the main body of the present document, the data structure definitions take precedence.

The OpenAPI representations referenced above:

- 1) use the MAJOR.MINOR.PATCH version fields to signal the version of the API as defined in the present document; and
- 2) use the "impl" version parameter (see clause 9.1.2 of ETSI GS NFV-SOL 013 [4]) to represent changes to the OpenAPI representation without changing the present document).

It is specified in clause 6 of ETSI GS NFV-SOL 015 [i.4] how the OpenAPI specification references the present document and signals the version information.



## Annex D (informative): Change history

| Date           | Version | Information about changes   |
|----------------|---------|---|
| October 2018   | 0.0.1   | Skeleton and scope  |
| January 2019   | 0.0.2   | Incorporate the following contributions: <ul style="list-style-type: none"> <li>- NFVSOL(18)000739_SOL012_Overview</li> <li>- NFVSOL(18)000740r1_SOL012_generic_part_of_policy_management_interface</li> <li>- NFVSOL(18)000741r2_SOL012_resource_structure_of_policy_management_interface</li> <li>- NFVSOL(18)000742r2_SOL012_resource_definition_of_policy_management_interface</li> <li>- NFVSOL(18)000764r1_SOL012_sequence_diagram_of_policy_management_interface</li> <li>- NFVSOL(18)000765r1_SOL012_data_type_definitions_of_policy_management_interface</li> </ul>  |
| March 2020     | 0.0.3   | Incorporate the following contributions: <ul style="list-style-type: none"> <li>- NFVSOL(19)000318r1_SOL012_Clause_4_1_Address_Editor_s_Note</li> <li>- NFVSOL(19)000319_SOL012_Clause_4_2_Address_Editor_s_Note</li> <li>- NFVSOL(19)000321_SOL012_Address_Editor_s_Note_on_Asynchronous_Policy_Transfer</li> <li>- NFVSOL(19)000731_SOL012_Annex_A_Mapping_operations_to_protocol_elements</li> </ul> Remove authors & contributors annex.<br>Editorial changes to clean the document.  |
| July 2020      | 0.1.0   | Incorporate the following contributions: <ul style="list-style-type: none"> <li>- NFVSOL(20)000483r1_SOL012ed331_Clause_5_Redesign_the_policy_resource_structure</li> <li>- NFVSOL(20)000543r2_SOL012ed331_Clause_5_4_Sequence_Diagram_Change</li> <li>- NFVSOL(20)000544r3_SOL012ed331_Clause_5_6_Data_Type_Change</li> <li>- NFVSOL(20)000612r2_SOL012ed331_Clause_5_5_Resource_Definition_Change</li> <li>- NFVSOL(20)000626_SOL012_Clause_5_5_Editorial_fix_to_align_with_other_API_spec</li> </ul>   |
| September 2020 | 0.1.1   | Incorporate the following contributions: <ul style="list-style-type: none"> <li>- NFVSOL(20)000636_SOL012ed331_Update_Annex_A</li> <li>- NFVSOL(20)000637_SOL012ed331_Clause_3_3_Update_Abbreviations</li> <li>- NFVSOL(20)000638_SOL012Ed331_-_Clause_1_to_3_-_Minor_fixes</li> <li>- NFVSOL(20)000639_SOL012Ed331_-_Use_of_May_and_Can</li> <li>- NFVSOL(20)000640_SOL012Ed331_-_Small_technical_enhancements</li> <li>- NFVSOL(20)000641_SOL012ed331_Clause_5_3_Fix_resource_URI_structure_diagram</li> <li>- NFVSOL(20)000642_SOL012Ed331_-_Handling_of_policy_associations</li> <li>- NFVSOL(20)000652r2_SOL012ed331_-_Clause_5_7_Policy_State_Model</li> <li>- NFVSOL(20)000653_SOL012ed331_Clause_1_Scope_clarification</li> <li>- NFVSOL(20)000703r1_SOL012_Resolve_Editor_s_Notes</li> <li>- NFVSOL(20)000704_SOL012_Update_to_v3_4_1</li> </ul> |
| September 2022 | 3.6.2   | Base line for Release 3 maintenance, created from v3.4.1  |
| January 2023   | 4.3.1   | Base line for Release 4 maintenance, and incorporate the following contribution: <ul style="list-style-type: none"> <li>- NFVSOL(23)000014_SOL012ed441_Alignment_with_IFA048</li> </ul>   |
| May 2023       | 4.4.2   | Base line for v4.5.1 maintenance, created from v4.4.1   |
| October 2023   | 4.4.3   | Incorporate the following contributions: <ul style="list-style-type: none"> <li>- NFVSOL(23)000123_SOL012ed451_OAuth_scope_value_for_Policy</li> </ul>  |
| June 2025      | 5.2.2   | Incorporate the following contribution: <ul style="list-style-type: none"> <li>- NFVSOL(25)000190_SOL012_add_OpenAPI_and_update_reference</li> </ul> And rapporteur change to update the release of the reference document  |

---

## History

| Version | Date        | Status      |
|---------|-------------|-------------|
| V5.3.1  | August 2025 | Publication |
|         |             |             |
|         |             |             |
|         |             |             |
|         |             |             |