

**Open Service Access (OSA);
Parlay X Web Services;
Part 9: Terminal Location
(Parlay X 3)**



Reference

DES/TISPAN-01034-9-OSA

Keywords

API, OSA, service

ETSI

650 Route des Lucioles
F-06921 Sophia Antipolis Cedex - FRANCE

Tel.: +33 4 92 94 42 00 Fax: +33 4 93 65 47 16

Siret N° 348 623 562 00017 - NAF 742 C
Association à but non lucratif enregistrée à la
Sous-Préfecture de Grasse (06) N° 7803/88

Important notice

Individual copies of the present document can be downloaded from:

<http://www.etsi.org>

The present document may be made available in more than one electronic version or in print. In any case of existing or perceived difference in contents between such versions, the reference version is the Portable Document Format (PDF). In case of dispute, the reference shall be the printing on ETSI printers of the PDF version kept on a specific network drive within ETSI Secretariat.

Users of the present document should be aware that the document may be subject to revision or change of status. Information on the current status of this and other ETSI documents is available at

<http://portal.etsi.org/tb/status/status.asp>

If you find errors in the present document, please send your comment to one of the following services:

http://portal.etsi.org/chaicor/ETSI_support.asp

Copyright Notification

No part may be reproduced except as authorized by written permission.
The copyright and the foregoing restriction extend to reproduction in all media.

© European Telecommunications Standards Institute 2008.

© The Parlay Group 2008.

All rights reserved.

DECT™, **PLUGTESTS™**, **UMTS™**, **TIPHON™**, the TIPHON logo and the ETSI logo are Trade Marks of ETSI registered for the benefit of its Members.

3GPP™ is a Trade Mark of ETSI registered for the benefit of its Members and of the 3GPP Organizational Partners.

Contents

Intellectual Property Rights	5
Foreword.....	5
1 Scope	7
2 References	7
2.1 Normative references	7
3 Definitions and abbreviations.....	8
3.1 Definitions	8
3.2 Abbreviations	8
4 Detailed service description	8
5 Namespaces.....	8
6 Sequence diagrams	9
6.1 Terminal location query	9
6.2 Terminal location group query	10
6.3 Terminal location notification	11
6.4 Terminal location notification with check immediate	12
6.5 Terminal location periodic notification	13
7 XML Schema data type definition	14
7.1 Latitude and Longitude values	14
7.2 Accuracy values	14
7.3 EnteringLeavingCriteria enumeration	14
7.4 LocationInfo structure	15
7.5 RetrievalStatus enumeration.....	15
7.6 LocationData structure	15
7.7 DelayTolerance enumeration.....	16
8 Web Service interface definition.....	16
8.1 Interface: TerminalLocation.....	16
8.1.1 Operation: getLocation	16
8.1.1.1 Input message: getLocationRequest.....	16
8.1.1.2 Output message: getLocationResponse.....	16
8.1.1.3 Referenced faults.....	17
8.1.2 Operation: getTerminalDistance	17
8.1.2.1 Input message: getTerminalDistanceRequest	17
8.1.2.2 Output message: getTerminalDistanceResponse	17
8.1.2.3 Referenced faults.....	17
8.1.3 Operation: getLocationForGroup.....	18
8.1.3.1 Input message: getLocationForGroupRequest	18
8.1.3.2 Output message: getLocationForGroupResponse	18
8.1.3.3 Referenced faults.....	18
8.2 Interface: TerminalLocationNotificationManager.....	19
8.2.1 Operation: startGeographicalNotification.....	19
8.2.1.1 Input message: startGeographicalNotificationRequest	19
8.2.1.2 Output message: startGeographicalNotificationResponse	20
8.2.1.3 Referenced faults.....	20
8.2.2 Operation: startPeriodicNotification	20
8.2.2.1 Input message: startPeriodicNotificationRequest.....	21
8.2.2.2 Output message: startPeriodicNotificationResponse	21
8.2.2.3 Referenced faults.....	21
8.2.3 Operation: endNotification	21
8.2.3.1 Input message: endNotificationRequest.....	22
8.2.3.2 Output message: endNotificationResponse.....	22
8.2.3.3 Referenced faults.....	22

8.3	Interface: TerminalLocationNotification.....	22
8.3.1	Operation: locationNotification	22
8.3.1.1	Input message: locationNotificationRequest.....	22
8.3.1.2	Output message: locationNotificationResponse.....	22
8.3.1.3	Referenced faults.....	22
8.3.2	Operation: locationError	23
8.3.2.1	Input message: locationErrorResponse.....	23
8.3.2.2	Output message: locationErrorResponse.....	23
8.3.2.3	Referenced faults.....	23
8.3.3	Operation: locationEnd	23
8.3.3.1	Input message: locationEndRequest.....	23
8.3.3.2	Output message: locationEndResponse.....	23
8.3.3.3	Referenced faults.....	23
9	Fault definitions.....	24
9.1	ServiceException.....	24
9.1.1	SVC0200: Accuracy out of limit	24
9.2	PolicyException	24
9.2.1	POL0230: Requested accuracy not supported	24
9.2.2	POL0231: Geographic notification not available	24
9.2.3	POL0232: Periodic notification not available.....	24
10	Service policies	25
Annex A (normative):	WSDL for Terminal Location	26
Annex B (informative):	Bibliography.....	27
History		28

Intellectual Property Rights

IPRs essential or potentially essential to the present document may have been declared to ETSI. The information pertaining to these essential IPRs, if any, is publicly available for **ETSI members and non-members**, and can be found in ETSI SR 000 314: *"Intellectual Property Rights (IPRs); Essential, or potentially Essential, IPRs notified to ETSI in respect of ETSI standards"*, which is available from the ETSI Secretariat. Latest updates are available on the ETSI Web server (<http://webapp.etsi.org/IPR/home.asp>).

Pursuant to the ETSI IPR Policy, no investigation, including IPR searches, has been carried out by ETSI. No guarantee can be given as to the existence of other IPRs not referenced in ETSI SR 000 314 (or the updates on the ETSI Web server) which are, or may be, or may become, essential to the present document.

Foreword

This ETSI Standard (ES) has been produced by ETSI Technical Committee Telecommunications and Internet converged Services and Protocols for Advanced Networking (TISPAN), and is now submitted for the ETSI standards Membership Approval Procedure.

The present document is part 9 of a multi-part deliverable covering Open Service Access (OSA); Parlay X 3 Web Services, as identified below:

- Part 1: "Common";
- Part 2: "Third Party Call";
- Part 3: "Call Notification";
- Part 4: "Short Messaging";
- Part 5: "Multimedia Messaging";
- Part 6: "Payment";
- Part 7: "Account Management";
- Part 8: "Terminal Status";
- Part 9: "Terminal Location";**
- Part 10: "Call Handling";
- Part 11: "Audio Call";
- Part 12: "Multimedia Conference";
- Part 13: "Address List Management";
- Part 14: "Presence";
- Part 15: "Message Broadcast";
- Part 16: "Geocoding";
- Part 17: "Application-driven Quality of Service (QoS)";
- Part 18: "Device Capabilities and Configuration";
- Part 19: "Multimedia Streaming Control";
- Part 20: "Multimedia Multicast Session Management".

The present document has been defined jointly between ETSI, The Parlay Group (<http://www.parlay.org>) and the 3GPP.

The present document forms part of the Parlay X 3.0 set of specifications.

The present document is equivalent to 3GPP TS 29.199-09 V7.2.2 (Release 7).

1 Scope

The present document is part 9 of the Stage 3 Parlay X 3 Web Services specification for Open Service Access (OSA).

The OSA specifications define an architecture that enables application developers to make use of network functionality through an open standardized interface, i.e. the OSA APIs.

The present document specifies the Terminal Location Web Service. The following are defined here:

- Name spaces.
- Sequence diagrams.
- Data definitions.
- Interface specification plus detailed method descriptions.
- Fault definitions.
- Service Policies.
- WSDL Description of the interfaces.

2 References

References are either specific (identified by date of publication and/or edition number or version number) or non-specific.

- For a specific reference, subsequent revisions do not apply.
- Non-specific reference may be made only to a complete document or a part thereof and only in the following cases:
 - if it is accepted that it will be possible to use all future changes of the referenced document for the purposes of the referring document;
 - for informative references.

Referenced documents which are not found to be publicly available in the expected location might be found at <http://docbox.etsi.org/Reference>.

For online referenced documents, information sufficient to identify and locate the source shall be provided. Preferably, the primary source of the referenced document should be cited, in order to ensure traceability. Furthermore, the reference should, as far as possible, remain valid for the expected life of the document. The reference shall include the method of access to the referenced document and the full network address, with the same punctuation and use of upper case and lower case letters.

NOTE: While any hyperlinks included in this clause were valid at the time of publication ETSI cannot guarantee their long term validity.

2.1 Normative references

The following referenced documents are indispensable for the application of the present document. For dated references, only the edition cited applies. For non-specific references, the latest edition of the referenced document (including any amendments) applies.

[1] W3C Recommendation (2 May 2001): "XML Schema Part 2: Datatypes".

NOTE: Available at <http://www.w3.org/TR/2001/REC-xmlschema-2-20010502/>.

- [2] ETSI ES 202 504-1: "Open Service Access (OSA); Parlay X Web Services; Part 1: Common (Parlay X 3)".
- [3] ISO 6709: "Standard representation of latitude, longitude and altitude for geographic point locations".

3 Definitions and abbreviations

3.1 Definitions

For the purposes of the present document, the terms and definitions given in ES 202 504-1 [2] apply.

3.2 Abbreviations

For the purposes of the present document, the abbreviations given in ES 202 504-1 [2] apply.

4 Detailed service description

Terminal Location provides access to the location of a terminal through:

- Request for the location of a terminal.
- Request for the location of a group of terminals.
- Notification of a change in the location of a terminal.
- Notification of terminal location on a periodic basis.
- Location is expressed through a latitude, longitude, altitude and accuracy.

When a request for a group of terminals is made, the response may contain a full or partial set of results. This allows the service to provide results based on a number of criteria including number of terminals for which the request is made and amount of time required to retrieve the information. This allows the requester to initiate additional requests for those terminals for which information was not provided.

5 Namespaces

The TerminalLocation interface uses the namespace:

http://www.csapi.org/wsd/parlayx/terminal_location/v3_1

The TerminalLocationNotificationManager interface uses the namespace:

http://www.csapi.org/wsd/parlayx/terminal_location/notification_manager/v3_1

The TerminalLocationNotification interface uses the namespace:

http://www.csapi.org/wsd/parlayx/terminal_location/notification/v3_0

The data types are defined in the namespace:

http://www.csapi.org/schema/parlayx/terminal_location/v3_0

The 'xsd' namespace is used in the present document to refer to the XML Schema data types defined in XML Schema [1]. The use of the name 'xsd' is not semantically significant.

6 Sequence diagrams

6.1 Terminal location query

Pattern: Request / Response.

For an application to determine the location of a terminal device, it provides a terminal device address and desired accuracy, and receives the location for the device requested.

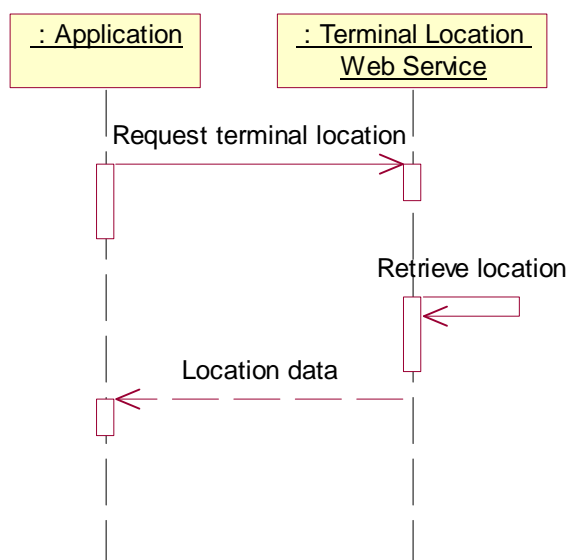


Figure 1

6.2 Terminal location group query

Pattern: Request / Response.

When an application requires the locations of a set of terminal devices, it may provide an array of terminal device addresses, including network managed group addresses, and receive the location data for the set of devices requested.

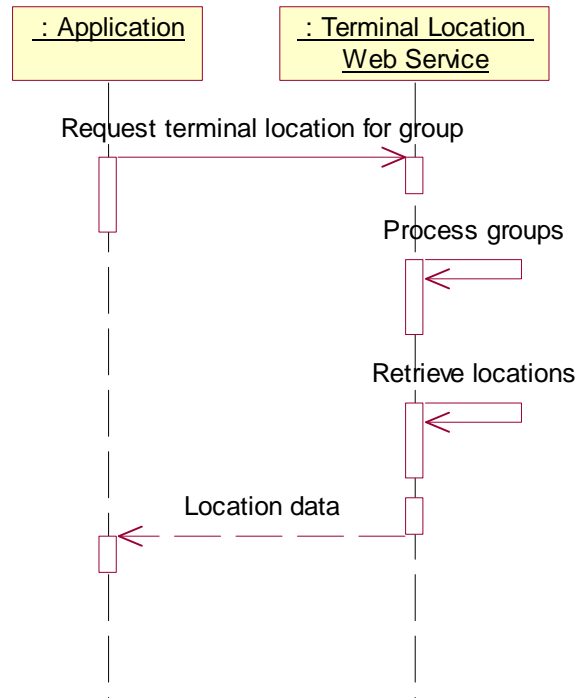


Figure 2

6.3 Terminal location notification

Pattern: Application Correlated Multiple Notification.

An application can be notified of a terminal device entering or leaving a geographical area. When a matching event occurs; a notification message will be sent to the application.

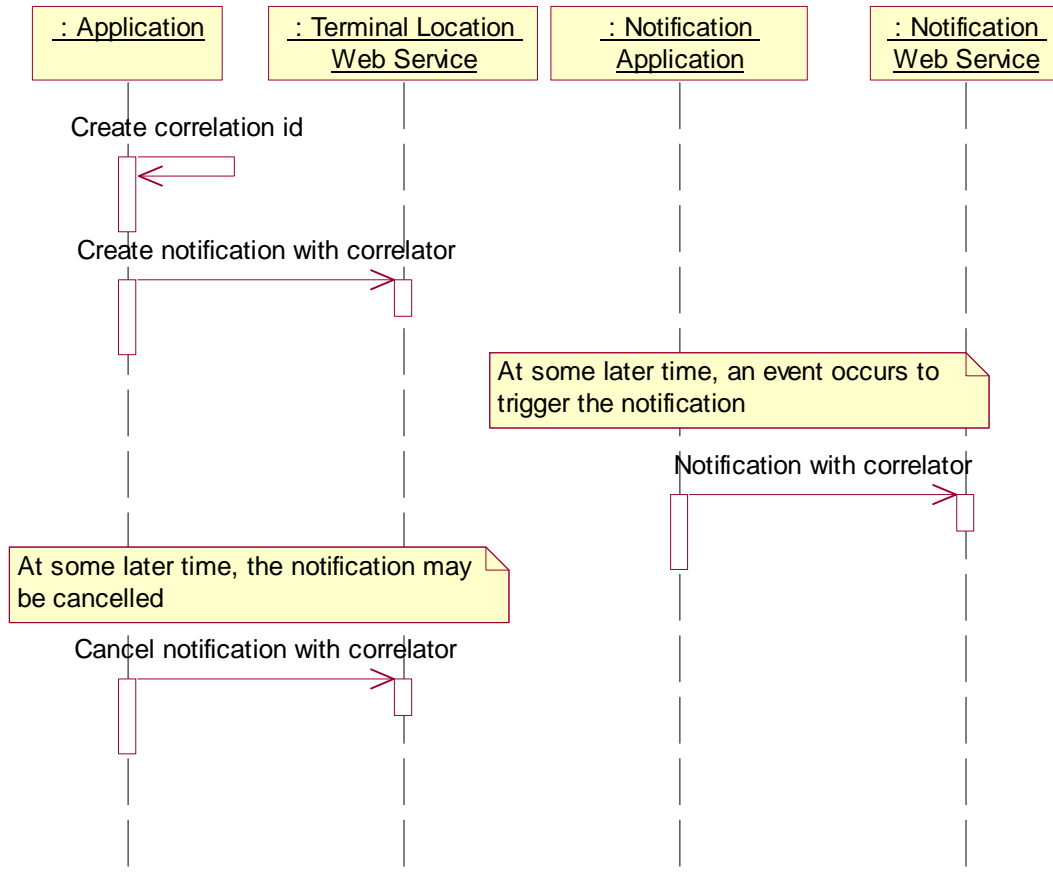


Figure 3

6.4 Terminal location notification with check immediate

In some applications, the terminal location notification will be used to watch for a specific location change. An example is a 'call when present' service, where the terminal location is checked and determined to be outside the target area, and a notification is set up to notify the application when the terminal enters the target area. Between the time of the original location determination and the time the notification is set up, the terminal could move into the target area, thus the notification on entry into the target area would not be sent.

Using the check immediate flag, after the notification is established, the terminal location will be determined, and if the terminal is in the target area, then a notification will be sent immediately. The following sequence diagram shows this scenario.

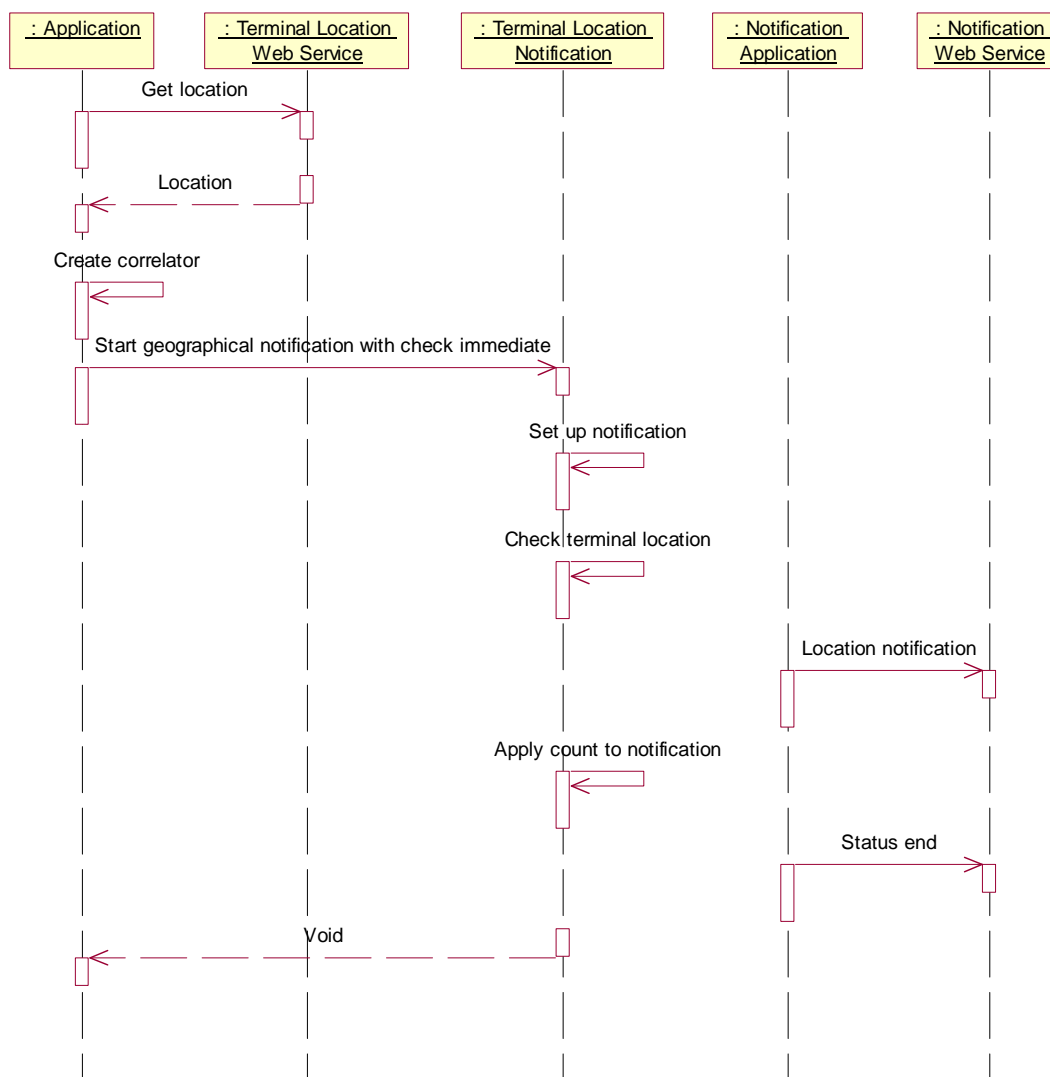


Figure 4

This sequence shows:

- The Enterprise Application checks the location of a terminal, and receives its location (in this scenario determining that the terminal is outside the target area).
- The Enterprise Application generates a correlator, and starts a notification with criteria defined to notify the Enterprise Web Service when the terminal enters the target area and the check immediate flag set to true.
- Sets up the notification to monitor terminal location.
- Check the current location of the terminal, and determine if the terminal lies inside the target area.

- In this case, the terminal is in the target area, and a notification is delivered to the Enterprise Web Service.
- The count of notifications is incremented and compared to the notification count limit.
- In this case, a single notification was requested, and the end notification message is sent.
- The startGeographicalNotification operation completes.

This scenario includes the full set of interactions in one sequence, which also shows that the notifications can be received concurrent with the creation of the notification.

6.5 Terminal location periodic notification

Pattern: Application Correlated Multiple Notification.

An application can be notified of a terminal device location on a periodic basis. At each interval, a notification message will be sent to the application.

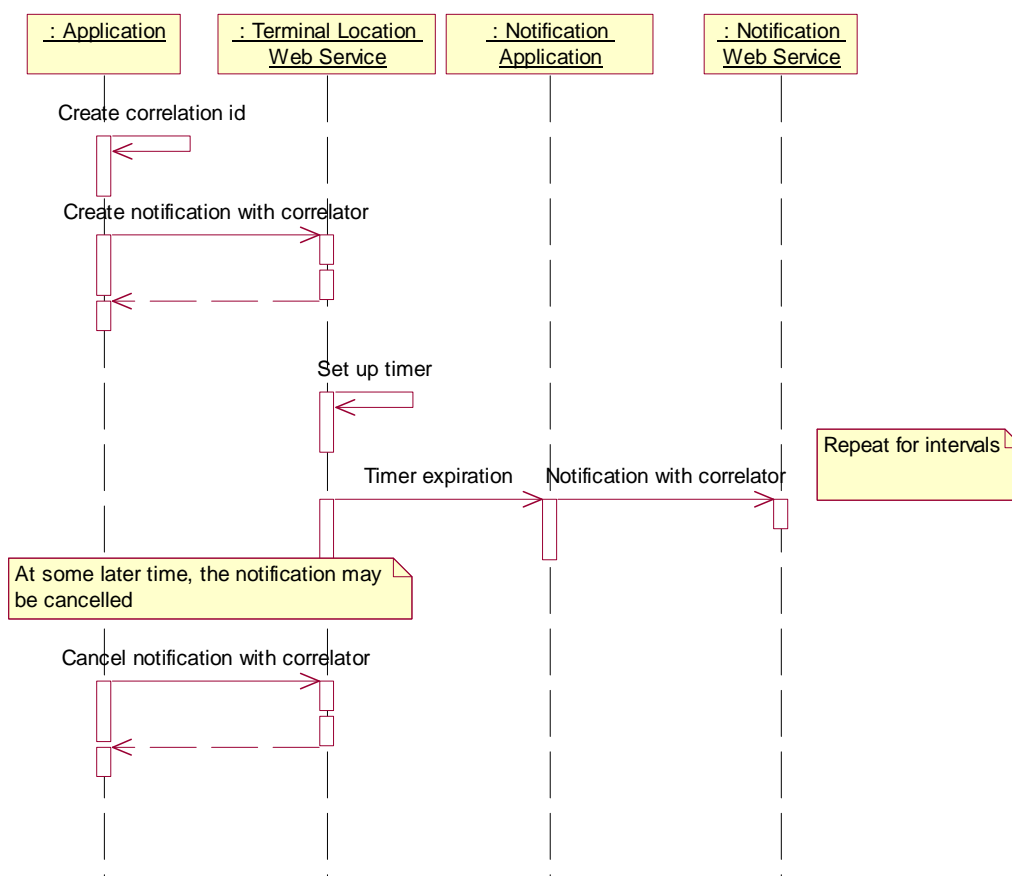


Figure 5

7 XML Schema data type definition

7.1 Latitude and Longitude values

Latitude and longitude values used in the present document follow the conventions of the ISO 6709 [3] specification, as it applies to latitudes and longitudes specified using decimal degrees.

Latitude values are expressed as floating point numbers in the range -90,0000 to +90,0000, using decimal degrees (as opposed to minutes and seconds). Positive values indicate locations north of and on the equator. Negative values indicate locations south of the equator.

Longitude values are expressed as floating point numbers in the range -180,0000 to +180,0000, using decimal degrees (as opposed to minutes and seconds). Positive values indicate locations east of and on the prime meridian (Greenwich). Negative values indicate locations west of the prime meridian up to the 180th meridian.

7.2 Accuracy values

Two accuracy values are used in some of the operations. These values express the desire of the application for the location information to be provided by the Web Service. The choice of values may influence the price that the Service Provider charges.

- The 'requested accuracy' expresses the range in which the application wishes to receive location information. This may influence the choice of location technology to use (for instance, cell sector location may be suitable for requests specifying 1 000 meters, but GPS technology may be required for requests below 100 meters).
- The 'acceptable accuracy' expresses the range that the application considers useful, if the location cannot be determined within this range, then the application would prefer not to receive the information. For instance, a taxi tracking service to determine the closest taxi to a person may not be useful if the accuracy cannot be provided within 1 000 meters to provide prompt service. This will also reduce customer satisfaction issues, since results that are not useful can be handled appropriately for billing (e.g. Service Provider may choose not to bill for these).

The 'maximum_age' expresses the maximum age of location information that the application considers useful. This can be used by the service provider to supply cached location information rather than always to do a direct network location request.

The 'response time' expresses the expected response time from an application point of view. If the network is unable to respond within the desired time frame, the application would prefer not to have the information as it may no longer be useful.

The 'tolerance' expresses the priority of response time versus accuracy. If the application is delay tolerant the network is expected to return a location with the requested accuracy even if this means not complying with the requested response time. The application can also indicate that it is more important that the location information is returned within the requested time even if this implies that the requested accuracy can not be fulfilled. An indication of 'no delay' implies that the application expects the service provider to return any current location estimate immediately.

In triggered notifications, a tracking accuracy is defined. This accuracy refers not to the accuracy for the area being checked against, but rather for the accuracy of the technology used to track the terminal. For instance, a fine grained tracking accuracy would be suitable for tracking the terminal entering a specific location, like a person arriving at a destination building. A coarse grained tracking accuracy would be appropriate for determining when a person has arrived at a city after a plane trip or a truck is in the vicinity of a warehouse.

7.3 EnteringLeavingCriteria enumeration

Indicator for whether the notification is related to entering an area or leaving an area.

Enumeration value	Description
Entering	Terminal is entering an area
Leaving	Terminal is leaving an area

7.4 LocationInfo structure

Location information represented as a coordinate.

Element name	Element type	Optional	Description
latitude	xsd:float	No	Location latitude
longitude	xsd:float	No	Location longitude
altitude	xsd:float	Yes	Location altitude
accuracy	xsd:int	No	Accuracy of location provided in meters
timestamp	xsd:dateTime	No	Date and time that location was collected

7.5 RetrievalStatus enumeration

Enumeration of the location items that are related to an individual retrieval in a set.

Enumeration value	Description
Retrieved	Location retrieved, with result in currentLocation element
NotRetrieved	Location not retrieved, currentLocation is not provided (does not indicate an error, no attempt may have been made)
Error	Error retrieving location

7.6 LocationData structure

Data structure containing device address, retrieval status and location information. As this can be related to a query of a group of terminal devices, the **reportStatus** element is used to indicate whether the information for the device was retrieved or not, or if an error occurred.

Element name	Element type	Optional	Description
address	xsd:anyURI	No	Address of the terminal device to which the location information applies
reportStatus	RetrievalStatus	No	Status of retrieval for this terminal device address
currentLocation	LocationInfo	Yes	Location of terminal. It is only provided if reportStatus=Retrieved .
errorInformation	common:ServiceError	Yes	If reportStatus=Error , this is the reason for the error. Error due to privacy verification will be expressed as POL0002 in the ServiceError

7.7 DelayTolerance enumeration

Enumeration of the delay tolerance items that forms part of the location request.

Enumeration value	Description
NoDelay	The server should immediately return any location estimate that it currently has. If no estimate is available, the server shall return the failure indication and may optionally initiate procedures to obtain a location estimate (e.g. to be available for a later request).
LowDelay	Fulfillment of the response time requirement takes precedence over fulfillment of the accuracy requirement. The server shall return any current location estimate with minimum delay. The server shall attempt to fulfill any accuracy requirement, but in doing so shall not add any additional delay (i.e. a quick response with lower accuracy is more desirable than waiting for a more accurate response).
DelayTolerant	Fulfillment of the accuracy requirement takes precedence over fulfillment of the response time requirement. If necessary, the server should delay providing a response until the accuracy requirement of the requesting application is met. The server shall obtain a current location with regard to fulfilling the accuracy requirement.

8 Web Service interface definition

8.1 Interface: TerminalLocation

Request the location for a terminal.

8.1.1 Operation: getLocation

This operation is intended to retrieve the location for a single terminal. The accuracy requested is the desired accuracy for the response. The acceptable accuracy is the limit acceptable to the requester. If the accuracy requested cannot be supported, a fault (POL0230) will be returned to the application. If the accuracy of the location is not within the acceptable accuracy limit, then the location will not be returned, instead a fault (SVC0200) will be returned. The URI provided is for a single terminal, not a group URI. If a group URI is provided, a fault will be returned to the application. If the requester is not authorized to retrieve location information, a fault (POL0002) will be returned.

If tolerance is indicated this affects the priority of accuracy, response time and maximum acceptable age.

8.1.1.1 Input message: getLocationRequest

Part name	Part type	Optional	Description
requester	xsd:anyURI	Yes	It identifies the entity that is requesting the information. The application invokes this operation on behalf of this entity. However, it should NOT be assumed that the application has authenticated the requester . If this part is not present, the requesting entity is the application itself.
address	xsd:anyURI	No	Address of the terminal device for which the location information is requested
requestedAccuracy	xsd:int	No	Accuracy of location information requested
acceptableAccuracy	xsd:int	No	Accuracy that is acceptable for a response
maximumAge	common:TimeMetric	Yes	Maximum acceptable age of the location information that is returned
responseTime	common:TimeMetric	Yes	Indicates the maximum time that the application can accept to wait for a response
tolerance	DelayTolerance	No	Indicates the priority of response time versus accuracy

8.1.1.2 Output message: getLocationResponse

Part name	Part type	Optional	Description
result	LocationInfo	No	Location of the terminal for which location information was requested

8.1.1.3 Referenced faults

ServiceException from ES 202 504-1 [2]:

- SVC0001: Service error.
- SVC0002: Invalid input value.
- SVC0004: No valid address(es) – if the requested terminal device address does not exist.
- SVC0200: Accuracy out of limit.

PolicyException from ES 202 504-1 [2]:

- POL0001: Policy error.
- POL0002: Privacy error.
- POL0006: Groups not allowed.
- POL0230: Requested accuracy not supported.

8.1.2 Operation: getTerminalDistance

This operation is intended to determine the distance of a terminal from a location. The URI provided is for a single terminal, not a group URI. If a group URI is provided, a fault will be returned to the application.

8.1.2.1 Input message: getTerminalDistanceRequest

Part name	Part type	Optional	Description
requester	xsd:anyURI	Yes	It identifies the entity that is requesting the information. The application invokes this operation on behalf of this entity. However, it should NOT be assumed that the application has authenticated the requester . If this part is not present, the requesting entity is the application itself.
address	xsd:anyURI	No	Address of terminal to check
latitude	xsd:float	No	Latitude of the location to measure from
longitude	xsd:float	No	Longitude of the location to measure from

8.1.2.2 Output message: getTerminalDistanceResponse

Part name	Part type	Optional	Description
result	xsd:int	No	Distance from terminal to the location specified in meters

8.1.2.3 Referenced faults

ServiceException from ES 202 504-1 [2]:

- SVC0001: Service error.
- SVC0002: Invalid input value.
- SVC0004: No valid address(es) – if the requested terminal device address does not exist.

PolicyException from ES 202 504-1 [2]:

- POL0001: Policy error.
- POL0002: Privacy error.
- POL0006: Groups not allowed.

8.1.3 Operation: getLocationForGroup

The getLocationForGroup operation initiates a retrieval activity, where one or more terminals, or groups of terminals, may have their locations determined. The accuracy requested is the desired accuracy for the response. If the accuracy requested is not supported, a fault (POL0230) will be returned to the application. If the location retrieved is not within the acceptable accuracy limit, then the location data will contain a ServiceError (SVC0200).

If tolerance is indicated this affects the priority of accuracy, response time and maximum acceptable age.

The Web Service may return a result set that does not include complete information, allowing the Web Service implementation to choose to deliver a partial set of results to accommodate other conditions, such as avoiding timeouts. In this case, a result will be marked **NotRetrieved** for each address for which a location retrieval was not attempted.

8.1.3.1 Input message: getLocationForGroupRequest

Part name	Part type	Optional	Description
requester	xsd:anyURI	Yes	It identifies the entity that is requesting the information. The application invokes this operation on behalf of this entity. However, it should NOT be assumed that the application has authenticated the requester . If this part is not present, the requesting entity is the application itself.
addresses	xsd:anyURI [1..unbounded]	No	List of URIs to get location for, including group URIs
requestedAccuracy	xsd:int	No	Accuracy of location requested in meters
acceptableAccuracy	xsd:int	No	Accuracy that is acceptable for a response in meters
maximumAge	common:TimeMetric	Yes	Maximum acceptable age of the location information that is returned
responseTime	common:TimeMetric	Yes	Indicates the maximum time that the application can accept to wait for a response
tolerance	DelayTolerance	No	Indicates the priority of response time versus accuracy

8.1.3.2 Output message: getLocationForGroupResponse

Part name	Part type	Optional	Description
result	LocationData [1..unbounded]	No	Set of results for the request

8.1.3.3 Referenced faults

ServiceException from ES 202 504-1 [2]:

- SVC0001: Service error.
- SVC0002: Invalid input value.
- SVC0004: No valid addresses.
- SVC0006: Invalid group.

PolicyException from ES 202 504-1 [2]:

- POL0001: Policy error.
- POL0002: Privacy error.
- POL0003: Too many addresses.
- POL0006: Groups not allowed.
- POL0007: Nested groups not allowed.
- POL0230: Requested accuracy not supported.

8.2 Interface: TerminalLocationNotificationManager

Set up notifications for terminal location events using geographical based definitions.

8.2.1 Operation: startGeographicalNotification

Notifications of location changes are made available to applications. The number and duration of notifications may be requested as part of the setup of the notification or may be governed by service policies, or a combination of the two.

If **checkImmediate** is set to true, then the notification will be set up, and then the current value of the terminal location will be checked. If the terminal location is within the **radius** provided and the criteria is **Entering** or is outside the **radius** and the criteria is **Leaving**, a notification will be sent to the application. This notification will count against the **count** requested. This addresses the case where the location of the device changes during the time the notification is being set up, which may be appropriate in some applications.

The **correlator** provided in the **reference** must be unique for this Web Service at the time the notification is initiated, otherwise a fault (SVC0005) will be returned to the application.

If the **frequency** requested is more often than allowed by the service policy, then the value in the service policy will be used. If the **duration** requested exceeds the time allowed in the service policy, then the value in the service policy will be used. If the notification period (**duration**) ends before all of the notifications (**count**) have been delivered, then the notification terminates. In all cases, when the notifications have run their course (by **duration** or **count**), an end of notifications message will be provided to the application.

Service policies may govern what **count** values can be requested, including maximum number of notifications allowed and whether unlimited notifications can be requested (i.e. either by not specifying the optional **count** message part or by specifying it with a value of zero). If the **count** value requested is not in policy, a fault (POL0004 or POL0005 as appropriate) will be returned.

The criteria will be met when the terminal enters the area defined as the circle of the **radius** provided around the point provided (**latitude**, **longitude**). The **trackingAccuracy** provided will determine how fine grained is the determination of where the terminal is located. A **trackingAccuracy** with a high value (coarse grained tracking) may result in more or less notifications (false or missed notifications) than actual entries and exits from the area defined.

Service policies govern what values can be provided for **trackingAccuracy**, including a minimum number (in meters) that can be requested. If the value provided is not within policy, a fault (POL0230) will be returned.

8.2.1.1 Input message: startGeographicalNotificationRequest

Part name	Part type	Optional	Description
reference	common: SimpleReference	No	Notification endpoint definition
requester	xsd:anyURI	Yes	It identifies the entity that is requesting location event notification. The application invokes this operation on behalf of this entity. However, it should NOT be assumed that the application has authenticated the requester . If this part is not present, the requesting entity is the application itself.
addresses	xsd:anyURI [0..unbounded]	No	Addresses of terminals to monitor
latitude	xsd:float	No	Latitude of centre point
longitude	xsd:float	No	Longitude of centre point
radius	xsd:float	No	Radius of circle around centre point in meters
trackingAccuracy	xsd:float	No	Number of meters of acceptable error in tracking distance
criteria	EnteringLeavingCriteria	No	Indicates whether the notification should occur when the terminal enters or leaves the target area
checkImmediate	xsd:boolean	No	Check location immediately after establishing notification
frequency	common:TimeMetric	No	Maximum frequency of notifications (can also be considered minimum time between notifications)
duration	common:TimeMetric	Yes	Length of time notifications occur for, do not specify to use default notification time defined by service policy
count	xsd:int	Yes	Maximum number of notifications. For no maximum, either do not specify this part or specify a value of zero.

8.2.1.2 Output message: startGeographicalNotificationResponse

Part name	Part type	Optional	Description
None			

8.2.1.3 Referenced faults

ServiceException from ES 202 504-1 [2]:

- SVC0001: Service error.
- SVC0002: Invalid input value.
- SVC0004: No valid addresses.
- SVC0005: Duplicate correlator.
- SVC0006: Invalid group.

PolicyException from ES 202 504-1 [2]:

- POL0001: Policy error.
- POL0002: Privacy error.
- POL0003: Too many addresses.
- POL0004: Unlimited notifications not supported.
- POL0005: Too many notifications requested.
- POL0006: Groups not allowed.
- POL0007: Nested groups not allowed.
- POL0009: Invalid frequency requested.
- POL0230: Requested accuracy not available
- POL0231: Geographic notification not available.

8.2.2 Operation: startPeriodicNotification

Periodic notifications provide location information for a set of terminals at an application defined interval. The accuracy requested is the desired accuracy for the response. If the accuracy requested is not supported, a fault (POL0230) will be returned to the application.

8.2.2.1 Input message: startPeriodicNotificationRequest

Part name	Part type	Optional	Description
reference	common: SimpleReference	No	Notification endpoint definition
requester	xsd:anyURI	Yes	It identifies the entity that is requesting location event notification. The application invokes this operation on behalf of this entity. However, it should NOT be assumed that the application has authenticated the requester . If this part is not present, the requesting entity is the application itself.
addresses	xsd:anyURI [1..unbounded]	No	Addresses of terminals to monitor
requestedAccuracy	xsd:int	No	Accuracy of location requested in meters
frequency	common:TimeMetric	No	Maximum frequency of notifications (can also be considered minimum time between notifications)
duration	common:TimeMetric	Yes	Length of time notifications occur for, do not specify to use default notification time defined by service policy

8.2.2.2 Output message: startPeriodicNotificationResponse

Part name	Part type	Optional	Description
None			

8.2.2.3 Referenced faults

ServiceException from ES 202 504-1 [2]:

- SVC0001: Service error.
- SVC0002: Invalid input value.
- SVC0004: No valid addresses.
- SVC0005: Duplicate correlator.
- SVC0006: Invalid group.

PolicyException from ES 202 504-1 [2]:

- POL0001: Policy error.
- POL0002: Privacy error.
- POL0003: Too many addresses.
- POL0006: Groups not allowed.
- POL0007: Nested groups not allowed.
- POL0009: Invalid frequency requested.
- POL0230: Requested accuracy not available.
- POL0232: Periodic notification not available.

8.2.3 Operation: endNotification

The application may end a notification (either type) using this operation.

Until this operation returns, notifications may continue to be received by the application.

An end of notification (Location**EndRequest**) message will not be delivered to the application for a notification ended using this operation.

8.2.3.1 Input message: endNotificationRequest

Part name	Part type	Optional	Description
correlator	xsd:string	No	Correlator of request to end

8.2.3.2 Output message: endNotificationResponse

Part name	Part type	Optional	Description
None			

8.2.3.3 Referenced faults

ServiceException from ES 202 504-1 [2]:

- SVC0001: Service error.
- SVC0002: Invalid input value.

PolicyException from ES 202 504-1 [2]:

- POL0001: Policy error.

8.3 Interface: TerminalLocationNotification

Notification interface to which notifications are delivered.

8.3.1 Operation: locationNotification

When the location of a monitored device changes a notification is delivered to the application with the new location information. If a group identifier was used, the terminal device URI is provided, not the group URI.

8.3.1.1 Input message: locationNotificationRequest

Part name	Part type	Optional	Description
correlator	xsd:string	No	Correlator provided in request to set up this notification
data	LocationData [1 .. unbounded]	No	Location information for terminal
criteria	EnteringLeavingCriteria	Yes	Indicates whether the notification was caused by the terminal entering or leaving the target area. (This part is provided for geographical notifications, not for periodic notifications)

8.3.1.2 Output message: locationNotificationResponse

Part name	Part type	Optional	Description
None			

8.3.1.3 Referenced faults

None.

8.3.2 Operation: locationError

The location error message is sent to the application to indicate that the notification for a terminal, or for the whole notification, is being cancelled by the Web Service.

8.3.2.1 Input message: locationErrorRequest

Part name	Part type	Optional	Description
correlator	xsd:string	No	Correlator provided in request to set up this notification
address	xsd:anyURI	Yes	Address of terminal if the error applies to an individual terminal, or not specified if it applies to the whole notification
reason	common:ServiceError	No	Reason notification is being discontinued

8.3.2.2 Output message: locationErrorResponse

Part name	Part type	Optional	Description
None			

8.3.2.3 Referenced faults

None.

8.3.3 Operation: locationEnd

The notifications have completed for this correlator. This message will be delivered when the duration or count for notifications have been completed. This message will not be delivered in the case of an error ending the notifications or deliberate ending of the notifications (using **endNotification** operation).

8.3.3.1 Input message: locationEndRequest

Part name	Part type	Optional	Description
correlator	xsd:string	No	Correlator provided in request to set up this notification

8.3.3.2 Output message: locationEndResponse

Part name	Part type	Optional	Description
None			

8.3.3.3 Referenced faults

None.

9 Fault definitions

9.1 ServiceException

9.1.1 SVC0200: Accuracy out of limit

Name	Description
messageld	SVC0200
text	Accuracy of location is not within acceptable limit
variables	None

9.2 PolicyException

9.2.1 POL0230: Requested accuracy not supported

Name	Description
messageld	POL0230
text	Requested accuracy is not supported
variables	None

9.2.2 POL0231: Geographic notification not available

Name	Description
messageld	POL0231
text	Geographic notification is not available
variables	None

9.2.3 POL0232: Periodic notification not available

Name	Description
message Id	POL0232
text	Periodic notification is not available
variables	None

10 Service policies

Service policies for this service.

Name	Type	Description
MinimumAccuracy	xsd:int	Minimum value for requested accuracy
MinimumAcceptableAccuracy	xsd:int	Minimum value for acceptable accuracy
MinimumTrackingAccuracy	xsd:int	Minimum value for tracking accuracy
GeographicalNotificationAvailable	xsd:boolean	Can notifications be set on a geography
PeriodicNotificationAvailable	xsd:boolean	Can a periodic notification be set up
AltitudeAlwaysAvailable	xsd:boolean	Is altitude available for all location responses
AltitudeSometimesAvailable	xsd:boolean	Is altitude available for some or all location responses (if AltitudeAlwaysAvailable is true, this is also true)
MaximumNotificationAddresses	xsd:int	Maximum number of addresses for which a notification can be set up
MaximumNotificationFrequency	common:TimeMetric	Maximum rate of notification delivery (also can be considered minimum time between notifications)
MaximumNotificationDuration	common:TimeMetric	Maximum amount of time for which a notification can be set up
MaximumCount	xsd:int	Maximum number of notifications that may be requested
UnlimitedCountAllowed	xsd:boolean	Allowed to specify unlimited notification count (i.e. either by not specifying the optional count message part in startGeographicalNotificationRequest or by specifying a value of zero)
GroupSupport	xsd:boolean	Groups URIs may be used
NestedGroupSupport	xsd:boolean	Are nested groups supported in group definitions

Annex A (normative): WSDL for Terminal Location

The document/literal WSDL representation of this interface specification is compliant to ES 202 504-1 [2] and is contained in text files (contained in archive es_20250409v010101m0.zip) which accompany the present document.

Annex B (informative): Bibliography

ETSI TR 121 905: "Universal Mobile Telecommunications System (UMTS); Vocabulary for 3GPP Specifications (3GPP TR 21.905)".

History

Document history		
V1.1.1	February 2008	Membership Approval Procedure MV 20080425: 2008-02-26 to 2008-04-25