

**Telecommunications Management Network (TMN);
Radio specific performance monitoring
information model for Synchronous Digital Hierarchy (SDH)
radio relay network element**



Reference

DES/TMN-00006 (fao00icp.PDF)

Keywords

DRRS, management, network, performance,
radio, SDH

ETSI

Postal address

F-06921 Sophia Antipolis Cedex - FRANCE

Office address

650 Route des Lucioles - Sophia Antipolis
Valbonne - FRANCE
Tel.: +33 4 92 94 42 00 Fax: +33 4 93 65 47 16
Siret N° 348 623 562 00017 - NAF 742 C
Association à but non lucratif enregistrée à la
Sous-Préfecture de Grasse (06) N° 7803/88

Internet

secretariat@etsi.fr
Individual copies of this ETSI deliverable
can be downloaded from
<http://www.etsi.org>
If you find errors in the present document, send your
comment to: editor@etsi.fr

Copyright Notification

No part may be reproduced except as authorized by written permission.
The copyright and the foregoing restriction extend to reproduction in all media.

© European Telecommunications Standards Institute 1999.
All rights reserved.

Contents

Intellectual Property Rights.....	5
Foreword	5
1 Scope.....	6
2 References.....	6
3 Symbols and abbreviations	8
3.1 Symbols	8
3.2 Abbreviations.....	8
4 Registration supporting Abstract Syntax Notation No.1 (ASN.1).....	9
5 Information model of Radio specific Performance Monitoring.....	9
5.1 Overview.....	9
5.2 Object class definitions.....	9
5.2.1 Radio SPI Current Data.....	10
5.2.2 Radio Sink Synchronous Physical Interface Current Data	10
5.2.3 Radio Sink Synchronous Physical Interface History Data.....	11
5.2.4 Radio Source Synchronous Physical Interface Current Data.....	11
5.2.5 Radio Source Synchronous Physical Interface History Data.....	12
5.2.6 Radio Performance Monitoring Properties.....	12
5.2.7 SDH Radio Protection Current Data	12
5.2.8 SDH Radio Protection History Data	13
5.3 Package definitions	13
5.3.1 Received Level Second Counter List	13
5.3.2 Received Power Level Current Data	13
5.3.3 Received Power Level Tide Mark.....	13
5.3.4 Transmitted Level Second Counter List.....	13
5.3.5 Transmitted Power Level Current Data.....	14
5.3.6 Transmitted Power Level Tide Mark	14
5.4 Attribute definitions	14
5.4.1 Number of Supported Tx Thresholds.....	14
5.4.2 Number of Supported Rx Thresholds.....	14
5.4.3 Power Level Threshold List	14
5.4.4 Protection Switch Actual Count	15
5.4.5 Protection Switch Actual Duration.....	15
5.4.6 Failed Switch Request Count	15
5.4.7 Failed Switch Request Duration.....	15
5.4.8 Received Level Second Counter List	15
5.4.9 Received Power Level.....	16
5.4.10 Received Power Level Tide Mark Maximum.....	16
5.4.11 Received Power Level Tide Mark Minimum	16
5.4.12 Transmitted Level Second Counter List.....	16
5.4.13 Nominal Transmitted Power Level.....	16
5.4.14 Offset Transmitted Power Level.....	16
5.4.15 Offset Transmitted Power Level Tide Mark Maximum	17
5.4.16 Offset Transmitted Power Level Tide Mark Minimum	17
5.4.17 Permitted TX Thresholds Range	17
5.4.18 Permitted RX Thresholds Range	17
5.4.19 Default TX Thresholds List.....	17
5.4.20 Default RX Thresholds List	17
5.4.21 Radio PM Properties	18
5.5 Void.....	18
5.6 Void.....	18
5.7 Name binding definitions	18
5.7.1 Radio Sink SPI Current Data - Radio SPI TTP Sink.....	18

5.7.2	Radio Source SPI Current Data - Radio SPI TTP Source	18
5.7.3	SDH Radio Protection Current Data - Protection Unit.....	18
5.7.4	Radio Performance Properties - SDH NE	18
Annex A (informative):	Inheritance Relationship of Radio Performance Management	19
Annex B (informative):	Containment Relationship of Radio Performance Management.....	20
History		21

Intellectual Property Rights

IPRs essential or potentially essential to the present document may have been declared to ETSI. The information pertaining to these essential IPRs, if any, is publicly available for **ETSI members and non-members**, and can be found in SR 000 314: *"Intellectual Property Rights (IPRs); Essential, or potentially Essential, IPRs notified to ETSI in respect of ETSI standards"*, which is available **free of charge** from the ETSI Secretariat. Latest updates are available on the ETSI Web server (<http://www.etsi.org/ipr>).

Pursuant to the ETSI IPR Policy, no investigation, including IPR searches, has been carried out by ETSI. No guarantee can be given as to the existence of other IPRs not referenced in SR 000 314 (or the updates on the ETSI Web server) which are, or may be, or may become, essential to the present document.

Foreword

This ETSI Standard (ES) has been produced by ETSI Technical Committee Telecommunications Management Network (TMN), and is now submitted for the ETSI standards Membership Approval Procedure.

The present document describes the performance monitoring information model specific to Radio Relay Network Elements, which use the SDH multiplexing structure

1 Scope

The present document defines the information model to be used at the interface between network elements and management systems, for the management of SDH radio Network Element additional specific performance monitoring parameters.

Considering that:

- ETS 300 635 defines SDH Radio specific functional blocks for transmission at STM-N data rate,
- ETS 300 785 defines SDH Radio specific functional blocks for transmission at STM-0 data rate,
- EN 301 645 defines SDH Radio Relay equipment information model for use on Q interfaces,
- ETS 300 304 defines the SDH information model for the Network Element view,
- EN 301 167, ETS 300 417, ITU-T recommendations G.783 and G.784 define the performance monitoring architecture and requirements for generic functional blocks used also in DRRS,
- EN 301 129 defines additional radio specific performance monitoring parameters,
- ETS 300 411 defines the generic performance monitoring Information Model for SDH Network Element.

The present document defines:

- The information model for radio specific performance monitoring parameters for SDH radio Network Elements.

The present document does not define:

- The protocol stack to be used for message communication;
- the network level management processes;
- the application contexts;
- the conformance requirements to be met by an implementation of this information model;
- information model for the generic performance monitoring Information Model for SDH Network Element.

The Information Model defined here (and the corresponding Message Set) is concerned with the management of network elements, the equipment by which they are implemented and the functions contained within them. More precisely, it applies to an Equipment Domain visible at the Element Manager to Element interface and is only concerned with information available within that domain. Information proper to the domain of a Network Level Management Process is not included within this model.

2 References

The following documents contain provisions which, through reference in this text, constitute provisions of the present document.

- References are either specific (identified by date of publication, edition number, version number, etc.) or non-specific.
- For a specific reference, subsequent revisions do not apply.
- For a non-specific reference, the latest version applies.
- A non-specific reference to an ES shall also be taken to refer to later versions published as an EN with the same number.

[1] ETS 300 635: "Transmission and Multiplexing (TM); Synchronous Digital Hierarchy (SDH); Radio specific functional blocks for transmission of M x STM-N".

- [2] ETS 300 785: "Transmission and Multiplexing (TM); Synchronous Digital Hierarchy (SDH); Radio specific functional blocks for transmission of M x sub-STM-1".
- [3] ETS 300 411: "Transmission and Multiplexing (TM); Performance monitoring; Information model for the Network Element (NE) view".
- [4] ETS 300 417: "Transmission and Multiplexing (TM); Generic functional requirements for Synchronous Digital Hierarchy (SDH) equipment;".
- [5] TR 101 035: "Transmission and Multiplexing (TM); Synchronous Digital Hierarchy (SDH) aspects regarding Digital Radio Relay Systems (DRRS)".
- [6] ETS 300 304: "Transmission and Multiplexing (TM); Synchronous Digital Hierarchy (SDH); Information model for the Network Element (NE) view".
- [7] ITU-T Recommendation G.774.1: "Synchronous Digital Hierarchy (SDH) performance monitoring for the network element view".
- [8] ITU-T Recommendation G.774.8: "Synchronous Digital Hierarchy (SDH) management of radio-relay systems for the network element view".
- [9] ITU-T Recommendation X.721: "Information technology – Open Systems Interconnection – Structure of management information: Definition of management information".
- [10] ITU-T Recommendation M.3100: "Generic network information model".
- [11] ITU-T Recommendation X.720: "Information technology - Open Systems Interconnection - Structure of management information: Management information model".
- [12] ITU-T Recommendation G.774: "Synchronous digital hierarchy (SDH) management information model for the network element view".
- [13] ITU-T Recommendation X.722: "Information technology - Open Systems Interconnection - Structure of Management Information: Guidelines for the definition of managed objects".
- [14] ITU-T Recommendation X.701: "Information technology - Open Systems Interconnection - Systems management overview".
- [15] ITU-T Recommendation X.710: "Information technology – Open Systems Interconnection – Common Management Information Service".
- [16] ITU-T Recommendation X.711: "Information technology – Open Systems Interconnection – Common Management Information Protocol: Specification".
- [17] ITU-T Recommendation X.731: "Information technology - Open Systems Interconnection - Systems Management: State management function".
- [18] ITU-T Recommendation X.730: "Information technology - Open Systems Interconnection - Systems Management: Object management function".
- [19] ITU-T Recommendation X.733: "Information technology - Open Systems Interconnection - Systems Management: Alarm reporting function".
- [20] ITU-T Recommendation X.734: "Information technology - Open Systems Interconnection - Systems Management: Event report management function".
- [21] ITU-T Recommendation X.735: "Information technology - Open Systems Interconnection - Systems Management: Log control function".
- [22] EN 301 129: "Transmission and Multiplexing (TM); Digital Radio Relay Systems (DRRS); Synchronous Digital Hierarchy (SDH); System performance monitoring parameters of SDH DRRS".

- [23] EN 301 167: "Transmission and Multiplexing (TM); Management of Synchronous Digital Hierarchy (SDH) transmission equipment; Fault management and performance monitoring; Functional description".

3 Symbols and abbreviations

3.1 Symbols

For the purposes of the present document, the following symbols apply:

dB	Decibel
dBm	Decibel relative to 1 milliWatt

3.2 Abbreviations

For the purposes of the present document, the following abbreviations apply:

ATPC	Automatic Transmit Power Control
DEN	Draft European Norm
DRRS	Digital Radio Relay System
EN	European Norm
ES	Errored Second
ETS	European Telecommunication Standard
ETSI	European Telecommunications Standards Institute
IF	Intermediate Frequency
ITU-R	International Telecommunication Union Radio Sector (former CCIR)
ITU-T	International Telecommunication Union Telecommunication Sector (former CCITT)
NE	Network Element
POH	Path OverHead
PM	Performance Monitoring
QOS	Quality of Service
RF	Radio Frequency
ROHA	Radio OverHead Access
RPS	Radio Protection Switching
RRR	Radio Relay Regenerator
RRT	Radio Relay Terminal
RS	Regenerator Section
RSOH	Regenerator Section OverHead
RSPI	Radio Synchronous Physical Interface
RST	Regenerator Section Termination
SDH	Synchronous Digital Hierarchy
SES	Severely Errored Second
SEMF	Synchronous Element Management Function
SF	Signal Fail
STM-n	Synchronous Transport Module n
Sub-STM-1	Sub Synchronous Transport Module 1 (also defined as STM-0 in ITU-T Recommendation G.861)
TMN	Telecommunication Management Network
UAS	UnAvailable Second
VC-n	Virtual Container n

4 Registration supporting Abstract Syntax Notation No.1 (ASN.1)

```

Dentmn06 {itu(0) identified-organization(4) etsi(0) ets(xxx) informationModel(0) asn1Module(2)
dentmn06(0)}
DEFINITIONS IMPLICIT TAGS ::=
BEGIN
-- EXPORT Everything
dentmn06 OBJECT IDENTIFIER ::= {itu(0) identified-organization(4) etsi(0) ets(xxx)
informationModel(0)}
arppObjectClass OBJECT IDENTIFIER ::= {dentmn06 managedObjectClass(3)}
arppNameBinding OBJECT IDENTIFIER ::= {dentmn06 nameBinding(6)}
arppAttribute OBJECT IDENTIFIER ::= {dentmn06 attribute(7)}
arppAction OBJECT IDENTIFIER ::= {dentmn06 action(9)}
arppPackage OBJECT IDENTIFIER ::= {dentmn06 package(4)}
arppNotification OBJECT IDENTIFIER ::= {dentmn06 notification(10)}
IMPORT
Count
FROM Attribute-ASN1Module { joint-iso-itu(2) ms(9) smi(3) part2(2) asn1Module(2) 1 }
SDHGranularityPeriod
FROM SDHPMASN1 { itu(0) recommendation(0) g(7) g774(774) hyphen(127) pm(1) informationModel(0)
asn1Module(2) sdhmsp(0) };
Counter ::= CHOICE
{
null [0] NULL,
counter [1] INTEGER }
NumberOfSupportedThresholds ::= INTEGER
PLThreshold ::= INTEGER
PLThresholdList ::= SEQUENCE OF PLThreshold
ThresholdRange ::= SEQUENCE{
minValue INTEGER,
maxValue INTEGER}
CounterList ::= SEQUENCE OF Count -- Count imported from X721 Attribute-ASN1 Module
END

```

5 Information model of Radio specific Performance Monitoring

5.1 Void

5.2 Object class definitions

5.2.1 Radio SPI Current Data

```
radioSPICurrentData      MANAGED OBJECT CLASS
  DERIVED FROM sdhCurrentData ;
  CHARACTERIZED BY
    radioSPICurrentDataPackage PACKAGE
    BEHAVIOUR radioSPICurrentDataBeh ;
  ATTRIBUTES
    granularityPeriod REQUIRED VALUES SDHRadioPM.SDHGranularityPeriod,
    pLThresholdList GET-REPLACE ;;
```

```
REGISTERED AS { arppObjectClass 1 } ;
```

```
radioSPICurrentDataBeh BEHAVIOUR
```

```
DEFINED AS
```

"The radioSPICurrentData object class is not a instanciable superclass used to hold the monitoring of the physical characteristics and the current register counts of the Radio Synchronous Physical Interface during a collection period.

Subclasses of this managed object class have the capability to monitor power levels by using a sequence of counters.

The conditions that define each counter behaviour are determined by associating the i-th counter to the i-th threshold value contained in the pLThresholdList attribute. The length of the counter list attribute shall always match the length of the pLThresholdList attribute. The pLThresholdList attribute may contain unordered values.

A counter value is incremented if, during a one-second period, the power level exceeds the associated threshold value.

Specific instances obtained by instantiation of subclasses of this managed object class shall be explicitly created by the manager. The value of pLThresholdList attribute can be provided by the manager in the creation request. If not specified by the manager it is taken from the default power threshold list contained in the SDHRadioPMProperties object.

The create request will fail if:

- The length of the pLThresholdList sequence is greater than the value specified in the numberOfSupportedThresholds attribute defined in the SDHRadioPMProperties object;
- Any of the threshold values of the pLThresholdList sequence is outside the limits defined in the permittedThresholdRange attribute defined in the SDHRadioPMProperties object.

A QOS alarm notification may be emitted in association only to the first counter per performance primitive. The presence of the rLSCounterList or tLSCounterList attribute ID in the field of the CounterThresholdAttributeList attribute in a referenced thresholdData managed object class will trigger the notification emission by comparing the threshold value with the counter value of the first member of the rLSCounterList or tLSCounterList attribute.

The unavailableTimeAlarmPackage is not used in this class.";

5.2.2 Radio Sink Synchronous Physical Interface Current Data

```
radioSinkSPICurrentData  MANAGED OBJECT CLASS
  DERIVED FROM radioSPICurrentData ;
  CHARACTERIZED BY
    rxPowerLevelCurrentDataPackage,
    rLSCounterListPackage,
    radioSinkSPICurrentDataPackage PACKAGE
    BEHAVIOUR radioSinkSPICurrentDataBeh ;;;
  CONDITIONAL PACKAGES
    rxPowerLevelTideMarkPackage PRESENT IF " An instance supports it " ;
```

```
REGISTERED AS { arppObjectClass 2 } ;
```

```
radioSinkSPICurrentDataBeh BEHAVIOUR
```

```
DEFINED AS
```

"Instances of this managed object class are used to hold the monitoring of the physical characteristics and current register counts for an instance of the radioSPITTPSink (or subclass) managed object class during a collection period.

The observed performance primitive is the RL Received (Power) Level.

The monitored performance event is the RLTS Received (Power) Level Threshold Second.

This managed object class shall support at least two counters. A number greater than two is optional. An instance of this managed object class uses an instance of the radioSinkSPIHistoryData for data history retention." ;

5.2.3 Radio Sink Synchronous Physical Interface History Data

```

radioSinkSPIHistoryData  MANAGED OBJECT CLASS
  DERIVED FROM historyData ;
  CHARACTERIZED BY
    radioSinkSPIHistoryDataPackage  PACKAGE
      BEHAVIOUR radioSinkSPIHistoryDataBeh ;
    ATTRIBUTES
      rLSCounterList  GET ;;;
CONDITIONAL PACKAGES
  rxPowerLevelTideMarkPackage  PRESENT IF " The containing radioSinkSPICurrentData
  contains this package " ;
REGISTERED AS { arppObjectClass 3};
radioSinkSPIHistoryDataBeh  BEHAVIOUR
DEFINED AS
"Instances of this class are used to store the observed events of a radioSinkSPICurrentData object
at the end of an observation period.
An instance of this managed object class is contained by a radioSinkSPICurrentData managed object
instance. The threshold values associated with the counters recorded in the rLSCounterList attribute
are the ones contained in the pLThresholdList attribute of the containing current data instance." ;

```

5.2.4 Radio Source Synchronous Physical Interface Current Data

```

radioSourceSPICurrentData  MANAGED OBJECT CLASS
  DERIVED FROM radioSPICurrentData ;
  CHARACTERIZED BY
    txPowerLevelCurrentDataPackage,
    tLSCounterListPackage,
    radioSourceSPICurrentDataPackage  PACKAGE
      BEHAVIOUR radioSourceSPICurrentDataBeh ;;;
CONDITIONAL PACKAGES
  txPowerLevelTideMarkPackage  PRESENT IF " An instance supports it " ;
REGISTERED AS { arppObjectClass 4} ;
radioSourceSPICurrentDataBeh  BEHAVIOUR
DEFINED AS
"Instances of this managed object class are used to hold the monitoring of the physical
characteristics and current register counts for an instance of the radioSPITTPSource ( or subclass )
managed object class during a collection period.
The creation request of instances of this managed object class will fail if ATPC is not present.
The observed performance primitive is the TL Transmitted ( Power ) Level.
The monitored performance event is the TLTS Transmitted ( Power ) Level Threshold Second.
This managed object class will support at least one counter per performance primitive. An additional
one is optional.
An instance of this managed object class uses an instance of the radioSourceSPIHistoryData for data
history retention." ;

```

5.2.5 Radio Source Synchronous Physical Interface History Data

```
radioSourceSPIHistoryData  MANAGED OBJECT CLASS
  DERIVED FROM historyData ;
  CHARACTERIZED BY
    radioSourceSPIHistoryDataPackage  PACKAGE
      BEHAVIOUR radioSourceSPIHistoryDataBeh ;
  ATTRIBUTES
    tLSCounterList  GET;;;
  CONDITIONAL PACKAGES
    txPowerLevelTideMarkPackage  PRESENT IF " The containing radioSourceSPICurrentData
  contains this package " ;
REGISTERED AS { arppObjectClass 5};
radioSourceSPIHistoryDataBeh  BEHAVIOUR
DEFINED AS
" Instances of this class are used to store the observed events of a radioSourceSPICurrentData
object at the end of an observation period.
An instance of this managed object class is contained by a radioSourceSPICurrentData managed object
instance. The threshold values associated with the counters recorded in the tLSCounterList attribute
are the ones contained in the pLThresholdList attribute of the containing current data instance." ;
```

5.2.6 Radio Performance Monitoring Properties

```
sdhRadioPMPProperties  MANAGED OBJECT CLASS
  DERIVED FROM top ;
  CHARACTERIZED BY
    sdhRadioPMPPropertiesPackage  PACKAGE
      BEHAVIOUR sdhRadioPMPPropertiesBeh ;
  ATTRIBUTES
    numberOfSupportedRxThresholds  GET,
    numberOfSupportedTxThresholds  GET,
    permittedRxThresholdsRange  GET,
    permittedTxThresholdsRange  GET,
    defaultRxThresholdsList  GET,
    defaultTxThresholdsList  GET,
    radioPMPPropertiesId  GET ;;;
REGISTERED AS { arppObjectClass 6};
sdhRadioPMPPropertiesBeh  BEHAVIOUR
DEFINED AS
" Typically only one instance of this class is automatically instantiated by the agent (if the
additional radio performance parameters are supported). The values of the attributes of this class
define:
- the maximum number of Rx/Tx thresholds supported by the NE;
- the permitted range of Rx/Tx thresholds;
- the thresholds default values when not specified by the manager in the creation request of current
data instances.
If PM is only unidirectionally supported the supported thresholds number of the unsupported
direction is zero and the associated default threshold list is empty and the range attribute values
are meaningless" ;
```

5.2.7 SDH Radio Protection Current Data

```
sdhRadioProtectionCurrentData  MANAGED OBJECT CLASS
  DERIVED FROM sdhCurrentData ;
  CHARACTERIZED BY
    sdhRadioProtectionCurrentDataPackage  PACKAGE
      BEHAVIOUR sdhRadioProtectionCurrentDataBeh ;
  ATTRIBUTES
    granularityPeriod  REQUIRED VALUES SDHRadioPM.SDHGranularityPeriod,          pSAC
REPLACE-WITH-DEFAULT GET,
    fSRC  REPLACE-WITH-DEFAULT GET,
    pSAD  REPLACE-WITH-DEFAULT GET,
    fSRD  REPLACE-WITH-DEFAULT GET ;;;
REGISTERED AS { arppObjectClass 7} ;
sdhRadioProtectionCurrentDataBeh  BEHAVIOUR
DEFINED AS
" Instances of the sdhRadioProtectionCurrentData managed object class are used to hold the current
register counts for a radio protection during a collection period. The following performance
primitives are observed:
PSA Protection Switch Actual
fSR failedSwitch Request.
For the PSA performance primitive, the following performance events are defined :
PSAC Protection Switch Actual Count
PSAD Protection Switch Actual Duration
For the fSR performance primitive, the following performance events are defined :
fSRC failed Switch Request Count
fSRD failed Switch Request Duration.
This managed object class will use the sdhRadioProtectionHistoryData managed object class for
history retention.
```

In [1] the meaningless of protection counters is defined for different cases of protection schemes. This is reflected in this information model fragment by means of different syntax of the counter attributes. A NULL value is used to indicated an meaningless measure. " ;

5.2.8 SDH Radio Protection History Data

```
sdhRadioProtectionHistoryData    MANAGED OBJECT CLASS
  DERIVED FROM HistoryData ;
  CHARACTERIZED BY
    sdhRadioProtectionHistoryDataPackage    PACKAGE
      BEHAVIOUR    sdhRadioProtectionHistoryDataBeh ;
      ATTRIBUTES
        pSAC      GET,
        fSRC      GET,
        pSAD      GET,
        fSRD      GET ;;;
REGISTERED AS { arppObjectClass 8 } ;
sdhRadioProtectionHistoryDataBeh    BEHAVIOUR
DEFINED AS
" Instances of this managed object class are used to store the observed events of a
sdhRadioProtectionCurrentData object at the end of an observation period.
An instance of this managed object class is contained in an instance of the
sdhRadioProtectionCurrentData. " ;
```

5.3 Package definitions

5.3.1 Received Level Second Counter List

```
rLSCounterListPackage    PACKAGE
  BEHAVIOUR
    rLSCounterListPackageBeh ;
  ATTRIBUTES
    rLSCounterList    REPLACE-WITH-DEFAULT GET ;
REGISTERED AS { arppPackage 1 } ;
rLSCounterListPackageBeh    BEHAVIOUR
DEFINED AS
" This package is used to monitor the received power level by means of an ordered list of counters.
" ;
```

5.3.2 Received Power Level Current Data

```
rxPowerLevelCurrentDataPackage    PACKAGE
  BEHAVIOUR
    rxPowerLevelCurrentDataPackageBeh ;
  ATTRIBUTES
    rxPowerLevel    GET ;
REGISTERED AS { arppPackage 2 } ;
rxPowerLevelCurrentDataPackageBeh    BEHAVIOUR
DEFINED AS
" This package is used to store the gauge of a received power level value " ;
```

5.3.3 Received Power Level Tide Mark

```
rxPowerLevelTideMarkPackage    PACKAGE
  BEHAVIOUR
    rxPowerLevelTideMarkPackageBeh ;
  ATTRIBUTES
    rxPowerLevelTideMarkMax    GET ,
    rxPowerLevelTideMarkMin    GET ;
REGISTERED AS { arppPackage 3 } ;
rxPowerLevelTideMarkPackageBeh    BEHAVIOUR
DEFINED AS
" This Package is used to store the minimum and the maximum values reached by the received power
level gauge during an observation period. " ;
```

5.3.4 Transmitted Level Second Counter List

```
tLSCounterListPackage    PACKAGE
  BEHAVIOUR
    tLSCounterListPackageBeh ;
  ATTRIBUTES
    tLSCounterList    REPLACE-WITH-DEFAULT GET ;
REGISTERED AS { arppPackage 4 } ;
tLSCounterListPackageBeh    BEHAVIOUR
DEFINED AS
" This package is used to monitor the transmitted power level by means of an ordered list of
counters. " ;
```

5.3.5 Transmitted Power Level Current Data

```
txPowerLevelCurrentDataPackage    PACKAGE
    BEHAVIOUR
        txPowerLevelCurrentDataPackageBeh ;
    ATTRIBUTES
        nomTxPowerLevel    GET ,
offsetTxPowerLevel    GET ;
REGISTERED AS { arppPackage 5 } ;
txPowerLevelCurrentDataPackageBeh    BEHAVIOUR
DEFINED AS
" This package is used to store the gauge of two values :
- an integer fixed value expressed in dBm defining the nominal i.e. the maximum transmitted power
value which is equipment dependent,
- an integer offset value expressed in dB representing the variation with respect to the nominal
value." ;
```

5.3.6 Transmitted Power Level Tide Mark

```
txPowerLevelTideMarkPackage    PACKAGE
    BEHAVIOUR
        txPowerLevelTideMarkPackageBeh ;
    ATTRIBUTES
        offsetTxPowerLevelTideMarkMax    GET ,
        offsetTxPowerLevelTideMarkMin    GET ;
REGISTERED AS { arppPackage 6 } ;
txPowerLevelTideMarkPackageBeh    BEHAVIOUR
DEFINED AS
" This Package is used to store the minimum and the maximum values reached by the transmitted power
level gauge (offset values) during an observation period. " ;
```

5.4 Attribute definitions

5.4.1 Number of Supported Tx Thresholds

```
numberOfSupportedTxThresholds    ATTRIBUTE
    WITH ATTRIBUTE SYNTAX SDHRadioPM.NumberOfSupportedThresholds;
    MATCHES FOR EQUALITY, ORDERING ;
    BEHAVIOUR numberOfSupportedTxThresholdsBeh ;
REGISTERED AS { arppAttribute 1 } ;
numberOfSupportedTxThresholdsBeh    BEHAVIOUR
DEFINED AS
" This attribute is used to hold the maximum supported number of thresholds for TL performance
primitive monitoring " ;
```

5.4.2 Number of Supported Rx Thresholds

```
numberOfSupportedRxThresholds    ATTRIBUTE
    WITH ATTRIBUTE SYNTAX SDHRadioPM.NumberOfSupportedThresholds;
    MATCHES FOR EQUALITY, ORDERING ;
    BEHAVIOUR numberOfSupportedRxThresholdsBeh ;
REGISTERED AS { arppAttribute 2 } ;
numberOfSupportedRxThresholdsBeh    BEHAVIOUR
DEFINED AS
" This attribute is used to hold the maximum supported number of thresholds for RL performance
primitive monitoring " ;
```

5.4.3 Power Level Threshold List

```
pLThresholdList    ATTRIBUTE
    WITH ATTRIBUTE SYNTAX SDHRadioPM.PLThresholdList;
    MATCHES FOR EQUALITY ;
    BEHAVIOUR pLThresholdListBeh ;
REGISTERED AS { arppAttribute 3 } ;
pLThresholdListBeh    BEHAVIOUR
DEFINED AS
" This attribute is used to define the threshold values that determine the associated counter
behaviour.
This is an ordered set valued attribute whose single members have a one to one relationship with
members of the rLSCounterList or tLSCounterList attributes.
The pLCounterThresholdAssignment sub-field defines the threshold values as a positive integer.
The associated measure unit will be interpreted as expressed in minus dBm when referred to RLS
counters or in dB (offset value) when referred to TLS counters" ;
```

5.4.4 Protection Switch Actual Count

```
pSAC ATTRIBUTE
  WITH ATTRIBUTE SYNTAX SDHRadioPM.Counter ;
  MATCHES FOR EQUALITY, ORDERING ;
  BEHAVIOUR pSACBeh ;
REGISTERED AS { arppAttribute 4 } ;
pSACBeh BEHAVIOUR
DEFINED AS
" The value of the pSAC attribute represents the count of actual switches occurred on a protection
unit. For a protected protection unit it is the count of actual service switches to any protecting
protection unit. For a protecting protection unit it is the count of actual service switches from
any protected protection unit. " ;
```

5.4.5 Protection Switch Actual Duration

```
pSAD ATTRIBUTE
  WITH ATTRIBUTE SYNTAX SDHRadioPM.Counter ;
  MATCHES FOR EQUALITY, ORDERING ;
  BEHAVIOUR pSADBeh ;
REGISTERED AS { arppAttribute 5 } ;
pSADBeh BEHAVIOUR
DEFINED AS
" The value of the pSAD attribute represents the count of seconds during which the service was
actually switched on a protection unit. For a protected protection unit the service is switched if
it is carried on a protecting protection unit. For a protecting protection unit the service is
switched if it is carried on this protection unit. " ;
```

5.4.6 Failed Switch Request Count

```
fSRC ATTRIBUTE
  WITH ATTRIBUTE SYNTAX SDHRadioPM.Counter ;
  MATCHES FOR EQUALITY, ORDERING ;
  BEHAVIOUR fSRCBeh ;
REGISTERED AS { arppAttribute 6 } ;
fSRCBeh BEHAVIOUR
DEFINED AS
" The value of the fSRC attribute represents the number of the occurrences in a time period of the
following events:
- A: a PSR is activated on a working channel and the protecting channels are not available.
- B: a working channel is restored from a protecting channel while a PSR is still active on the
channel.
A fSRC is defined only for working channels.
If a PSR is already present on a protection unit, toggling among different priority PSR on the same
unit, will not increment the counter. " ;
```

5.4.7 Failed Switch Request Duration

```
fSRD ATTRIBUTE
  WITH ATTRIBUTE SYNTAX SDHRadioPM.Counter ;
  MATCHES FOR EQUALITY, ORDERING ;
  BEHAVIOUR fSRDBeh ;
REGISTERED AS { arppAttribute 7 } ;
fSRDBeh BEHAVIOUR
DEFINED AS
" The value of the fSRD attribute represents the count of seconds in a time period for which, at
least for a fraction of one second, a protection switch request is detected active on a channel
carrying regular traffic and the request cannot be serviced. " ;
```

5.4.8 Received Level Second Counter List

```
rLSCounterList ATTRIBUTE
  WITH ATTRIBUTE SYNTAX SDHRadioPM. CounterList;
  MATCHES FOR EQUALITY ;
  BEHAVIOUR rLSCounterListBeh ;
REGISTERED AS { arppAttribute 8 } ;
rLSCounterListBeh BEHAVIOUR
DEFINED AS
" This attribute is used to hold the count of the Received Level Second events during a collection
period.
This is an ordered set valued attribute whose single members have a one to one relationship with
members of the pLCounterThresholdAssignmentList attribute.
Each associated threshold determines the condition under which the count is activated. " ;
```

5.4.9 Received Power Level

```
rxPowerLevel ATTRIBUTE
  DERIVED FROM " Rec. X721 : 1992 " : gauge ;
  BEHAVIOUR rxPowerLevelBeh ;
REGISTERED AS { arppAttribute 9 } ;
rxPowerLevelBeh BEHAVIOUR
DEFINED AS
" The value of the rxPowerLevel attribute represents the received power level.
It is a positive integer with associated measure unit expressed in minus dBm. " ;
```

5.4.10 Received Power Level Tide Mark Maximum

```
rxPowerLevelTideMarkMax ATTRIBUTE
  DERIVED FROM " Rec. X721 : 1992 " : tideMark;
  BEHAVIOUR rxPowerLevelTideMarkMaxBeh ;
REGISTERED AS { arppAttribute 10 } ;
rxPowerLevelTideMarkMaxBeh BEHAVIOUR
DEFINED AS
" This attribute is used to store the maximum value reached by the received power level gauge during
an observation period. " ;
```

5.4.11 Received Power Level Tide Mark Minimum

```
rxPowerLevelTideMarkMin ATTRIBUTE
  DERIVED FROM " Rec. X721 : 1992 " : tideMark;
  BEHAVIOUR rxPowerLevelTideMarkMinBeh ;
REGISTERED AS { arppAttribute 11 } ;
rxPowerLevelTideMarkMinBeh BEHAVIOUR
DEFINED AS
" This attribute is used to store the minimum value reached by the received power level gauge during
an observation period. " ;
```

5.4.12 Transmitted Level Second Counter List

```
tLSCounterList ATTRIBUTE
  WITH ATTRIBUTE SYNTAX SDHRadioPM.CounterList;
  MATCHES FOR EQUALITY ;
  BEHAVIOUR tLSCounterListBeh ;
REGISTERED AS { arppAttribute 12 } ;
tLSCounterListBeh BEHAVIOUR
DEFINED AS
" This attribute is used to hold the count of the Transmitted Level Second events during a
collection period.
This is an ordered set valued attribute whose single members have a one to one relationship with
members of the pLCounterThresholdAssignmentList attribute.
Each associated threshold determines the condition under which the count is activated. " ;
```

5.4.13 Nominal Transmitted Power Level

```
nomTxPowerLevel ATTRIBUTE
  DERIVED FROM " Rec. X721 : 1992 " : gauge ;
  BEHAVIOUR nomTxPowerLevelBeh ;
REGISTERED AS { arppAttribute 13 } ;
nomTxPowerLevelBeh BEHAVIOUR
DEFINED AS
" The value of the nomTxPowerLevel is represented by an integer fixed value expressed in dBm
defining the nominal i.e. the maximum transmitted power value which is equipment dependent." ;
```

5.4.14 Offset Transmitted Power Level

```
offsetTxPowerLevel ATTRIBUTE
  DERIVED FROM " Rec. X721 : 1992 " : gauge ;
  BEHAVIOUR offsetTxPowerLevelBeh ;
REGISTERED AS { arppAttribute 14 } ;
offsetTxPowerLevelBeh BEHAVIOUR
DEFINED AS
" The value of the offsetTxPowerLevel is represented by an integer offset value expressed in dB
representing the variation with respect to the nominal value." ;
```


5.4.15 Offset Transmitted Power Level Tide Mark Maximum

```
offsetTxPowerLevelTideMarkMax ATTRIBUTE
  DERIVED FROM " Rec. X721 : 1992 " : tideMark;
  BEHAVIOUR offsetTxPowerLevelTideMarkMaxBeh ;
REGISTERED AS { arppAttribute 15 };
offsetTxPowerLevelTideMarkMaxBeh BEHAVIOUR
DEFINED AS
  " This attribute is used to store the maximum value reached by the transmitted power level gauge
  during an observation period. " ;
```

5.4.16 Offset Transmitted Power Level Tide Mark Minimum

```
offsetTxPowerLevelTideMarkMin ATTRIBUTE
  DERIVED FROM " Rec. X721 : 1992 " : tideMark;
  BEHAVIOUR offsetTxPowerLevelTideMarkMinBeh ;
REGISTERED AS { arppAttribute 16 };
offsetTxPowerLevelTideMarkMinBeh BEHAVIOUR
DEFINED AS
  " This attribute is used to store the minimum value reached by the transmitted power level gauge
  during an observation period. " ;
```

5.4.17 Permitted TX Thresholds Range

```
permittedTxThresholdsRange ATTRIBUTE
  WITH ATTRIBUTE SYNTAX SDHRadioPM.ThresholdRange;
  MATCHES FOR EQUALITY ;
  BEHAVIOUR permittedTxThresholdsRangeBeh ;
REGISTERED AS { arppAttribute 17 };
permittedTxThresholdsRangeBeh BEHAVIOUR
DEFINED AS
  "This attribute is used to define for the transmitter the maximum and minimum allowable values for a
  threshold value expressed in dB " ;
```

5.4.18 Permitted RX Thresholds Range

```
permittedRxThresholdsRange ATTRIBUTE
  WITH ATTRIBUTE SYNTAX SDHRadioPM.ThresholdRange;
  MATCHES FOR EQUALITY ;
  BEHAVIOUR permittedRxThresholdsRangeBeh ;
REGISTERED AS { arppAttribute 18 };
permittedRxThresholdsRangeBeh BEHAVIOUR
DEFINED AS
  "This attribute is used to define for the receiver the maximum and minimum allowable values for a
  threshold value expressed in - dBm " ;
```

5.4.19 Default TX Thresholds List

```
defaultTxThresholdsList ATTRIBUTE
  WITH ATTRIBUTE SYNTAX SDHRadioPM.ThresholdList;
  MATCHES FOR EQUALITY ;
  BEHAVIOUR defaultTxThresholdsListBeh ;
REGISTERED AS { arppAttribute 19 };
defaultTxThresholdsListBeh BEHAVIOUR
DEFINED AS
  "This attribute is used to define for the transmitter a threshold default value expressed in dB " ;
```

5.4.20 Default RX Thresholds List

```
defaultRxThresholdsList ATTRIBUTE
  WITH ATTRIBUTE SYNTAX SDHRadioPM.ThresholdList;
  MATCHES FOR EQUALITY ;
  BEHAVIOUR defaultRxThresholdsListBeh ;
REGISTERED AS { arppAttribute 20 };
defaultRxThresholdsListBeh BEHAVIOUR
DEFINED AS
  "This attribute is used to define for the receiver the default threshold values expressed in -
  dBm".
```

5.4.21 Radio PM Properties

```
radioPMPropertiesId ATTRIBUTE
    WITH ATTRIBUTE SYNTAX SDHRadioPM.NameType ;
    MATCHES FOR EQUALITY ;
    BEHAVIOUR radioPMPropertiesIdBeh ;
REGISTERED AS { arppAttribute 21 } ;
radioPMPropertiesIdBeh BEHAVIOUR
DEFINED AS
    "This attribute is used as a RDN for naming instances of the sdhRadioPMProperties object class " ;
```

5.5 Void

5.6 Void

5.7 Name binding definitions

5.7.1 Radio Sink SPI Current Data - Radio SPI TTP Sink

```
radioSinkSPICurrentData-radioSPITTPSink NAME BINDING
    SUBORDINATE OBJECT CLASS radioSinkSPICurrentData AND SUBCLASSES ;
    NAMED BY
        SUPERIOR OBJECT CLASS radioSPITTPSink AND SUBCLASSES ;
    WITH ATTRIBUTE scannerId ;
    CREATE
    WITH-REFERENCE-OBJECT,
    WITH-AUTOMATIC-INSTANCE-NAMING ;
    DELETE
    DELETES-CONTAINED-OBJECTS ;
REGISTERED AS { ArppNameBinding 1 } ;
```

5.7.2 Radio Source SPI Current Data - Radio SPI TTP Source

```
radioSourceSPICurrentData-radioSPITTPSource NAME BINDING
    SUBORDINATE OBJECT CLASS radioSourceSPICurrentData AND SUBCLASSES ;
    NAMED BY
        SUPERIOR OBJECT CLASS radioSPITTPSource AND SUBCLASSES ;
    WITH ATTRIBUTE scannerId ;
    CREATE
    WITH-REFERENCE-OBJECT,
    WITH-AUTOMATIC-INSTANCE-NAMING ;
    DELETE
    DELETES-CONTAINED-OBJECTS ;
REGISTERED AS { ArppNameBinding 2 } ;
```

5.7.3 SDH Radio Protection Current Data - Protection Unit

```
sdhRadioProtectionCurrentData-protectionUnit NAME BINDING
    SUBORDINATE OBJECT CLASS sdhRadioProtectionCurrentData AND SUBCLASSES ;
    NAMED BY
        SUPERIOR OBJECT CLASS protectionUnit AND SUBCLASSES ;
    WITH ATTRIBUTE scannerId ;
    CREATE
    WITH-REFERENCE-OBJECT,
    WITH-AUTOMATIC-INSTANCE-NAMING ;
    DELETE
    DELETES-CONTAINED-OBJECTS ;
REGISTERED AS { ArppNameBinding 3 } ;
```

5.7.4 Radio Performance Properties - SDH NE

```
sdhRadioPMProperties-sdhNE NAME BINDING
    SUBORDINATE OBJECT CLASS sdhRadioPMProperties AND SUBCLASSES ;
    NAMED BY
        SUPERIOR OBJECT CLASS sdhNE AND SUBCLASSES ;
    WITH ATTRIBUTE radioPMPropertiesId ;
REGISTERED AS { ArppNameBinding 4 } ;
```

Annex A (informative): Inheritance Relationship of Radio Performance Management

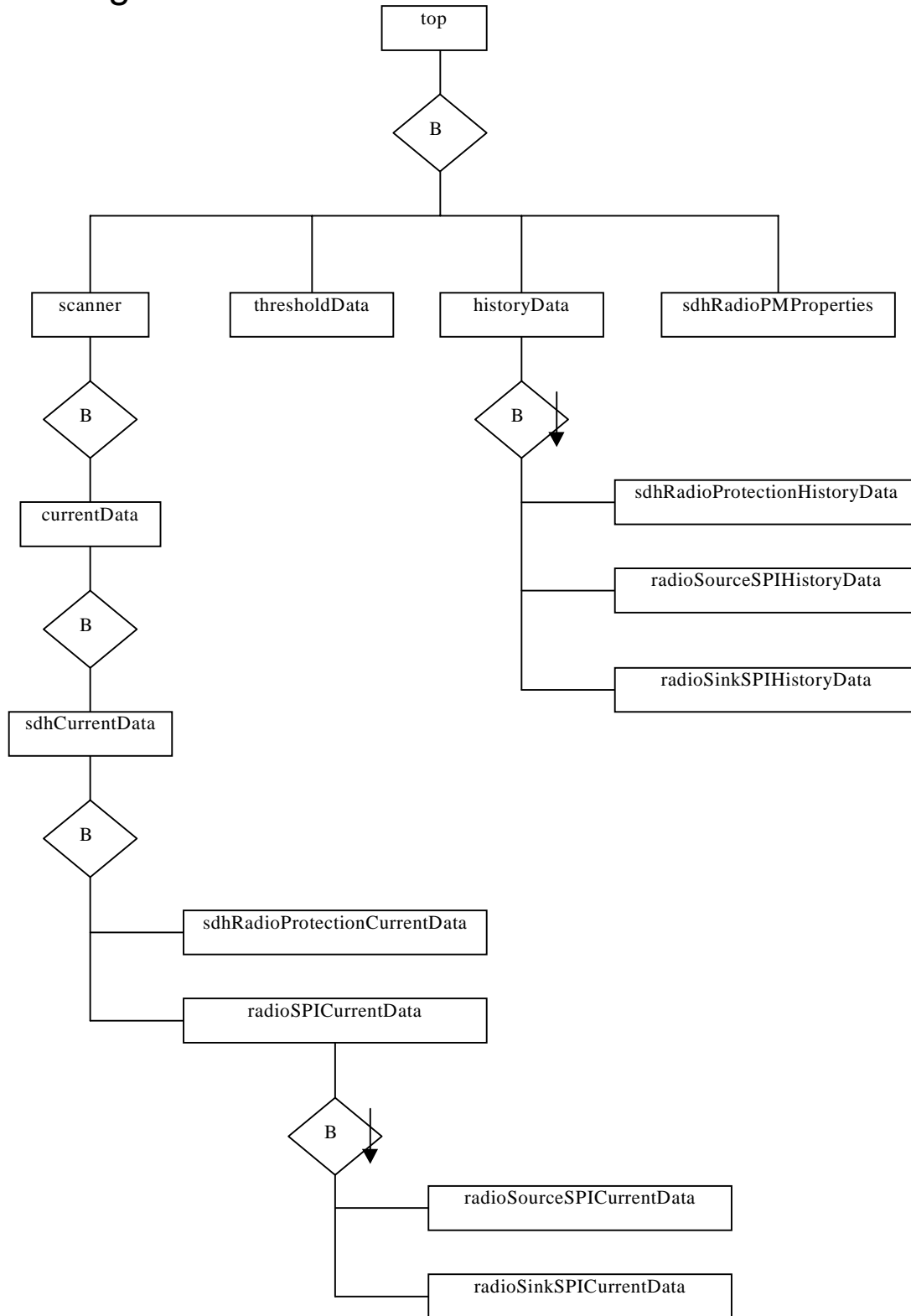


Figure A.1

Annex B (informative): Containment Relationship of Radio Performance Management

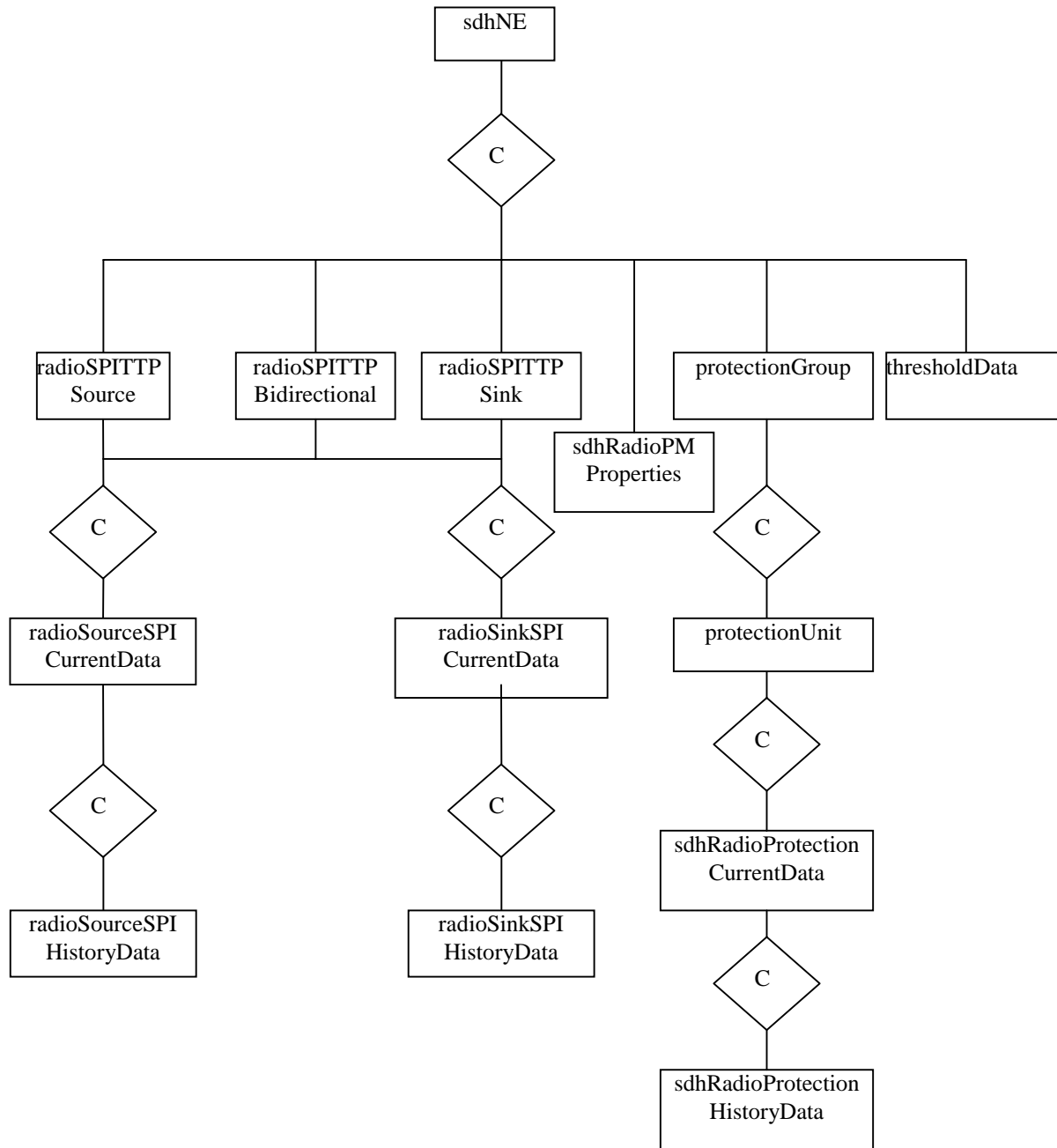


Figure B.1

History

Document history		
V1.1.1	March 1999	Membership Approval Procedure MV 9922: 1999-03-30 to 1999-05-28