



EUROPEAN STANDARD

**Access, Terminals, Transmission and Multiplexing (ATTM);
Energy management;
Operational infrastructures;
Global KPIs;
Part 3: ICT Sites;
Sub-part 1: DCEM**

ReferenceREN/ATTM-005

Keywords

broadband, energy management, ICT,
sustainability**ETSI**

650 Route des Lucioles
F-06921 Sophia Antipolis Cedex - FRANCE

Tel.: +33 4 92 94 42 00 Fax: +33 4 93 65 47 16

Siret N° 348 623 562 00017 - NAF 742 C
Association à but non lucratif enregistrée à la
Sous-Préfecture de Grasse (06) N° 7803/88

Important notice

The present document can be downloaded from:

<http://www.etsi.org/standards-search>

The present document may be made available in electronic versions and/or in print. The content of any electronic and/or print versions of the present document shall not be modified without the prior written authorization of ETSI. In case of any existing or perceived difference in contents between such versions and/or in print, the only prevailing document is the print of the Portable Document Format (PDF) version kept on a specific network drive within ETSI Secretariat.

Users of the present document should be aware that the document may be subject to revision or change of status.

Information on the current status of this and other ETSI documents is available at

<https://portal.etsi.org/TB/ETSIDeliverableStatus.aspx>

If you find errors in the present document, please send your comment to one of the following services:

<https://portal.etsi.org/People/CommiteeSupportStaff.aspx>

Copyright Notification

No part may be reproduced or utilized in any form or by any means, electronic or mechanical, including photocopying and microfilm except as authorized by written permission of ETSI.

The content of the PDF version shall not be modified without the written authorization of ETSI.

The copyright and the foregoing restriction extend to reproduction in all media.

© ETSI 2017.

All rights reserved.

DECT™, **PLUGTESTS™**, **UMTS™** and the ETSI logo are trademarks of ETSI registered for the benefit of its Members.

3GPP™ and **LTE™** are trademarks of ETSI registered for the benefit of its Members and of the 3GPP Organizational Partners.

oneM2M logo is protected for the benefit of its Members.

GSM® and the GSM logo are trademarks registered and owned by the GSM Association.

Contents

Intellectual Property Rights	7
Foreword.....	7
Modal verbs terminology.....	7
Introduction	8
1 Scope	9
2 References	9
2.1 Normative references	9
2.2 Informative references.....	10
3 Definitions, symbols and abbreviations	11
3.1 Definitions	11
3.2 Symbols.....	12
3.3 Abbreviations	12
4 Energy management of ICT sites	13
4.1 General	13
4.1.1 Measured energy.....	13
4.1.2 Dedicated ICT sites.....	13
4.1.3 Mixed-use ICT sites.....	14
4.1.4 Groups of ICT sites.....	14
4.2 Related standards.....	14
5 Global KPI for ICT sites (KPI_{DCEM}).....	16
5.1 General	16
5.1.1 Global KPI (KPI_{DCEM}) for ICT sites.....	16
5.1.2 Objective KPIs.....	16
5.1.2.1 Energy consumption (KPI_{EC}).....	16
5.1.2.2 Task effectiveness (KPI_{TE}).....	17
5.1.2.3 Energy re-use (KPI_{REUSE})	17
5.1.2.4 Renewable energy (KPI_{REN})	18
5.2 Scale	18
5.3 Utilization and evolution.....	18
5.4 Definition of boundaries.....	19
5.4.1 General.....	19
5.4.2 Flows of electrical energy.....	19
5.4.3 Flows of thermal energy	20
5.4.3.1 ICT site cooling (heat discharge systems).....	20
5.4.3.2 Heat distribution networks	21
5.4.4 Inclusion in Objective KPIs.....	21
5.5 Formulae.....	22
5.5.1 Global KPI for ICT sites (KPI_{DCEM}).....	22
5.5.1.1 General	22
5.5.1.1.1 KPI_{EC}	22
5.5.1.1.2 KPI_{EP}	22
5.5.1.2 Definition of terms	22
5.5.1.3 Clarity	23
5.5.1.4 Criteria	23
5.5.1.5 Weighting factors.....	23
5.5.1.5.1 General	23
5.5.1.5.2 Energy re-use (W_{REUSE}).....	23
5.5.1.5.3 Renewable energy (W_{REN}).....	23
5.5.2 Objective KPIs for ICT sites.....	24
5.5.2.1 Energy consumption (KPI_{EC}).....	24

5.5.2.1.1	Formula	24
5.5.2.1.2	Definitions of terms	24
5.5.2.1.3	Clarity	24
5.5.2.1.4	Criteria	24
5.5.2.2	Task effectiveness (KPI_{TE})	25
5.5.2.2.1	Formula	25
5.5.2.2.2	Definitions of terms	25
5.5.2.2.3	Clarity	25
5.5.2.2.4	Criteria	25
5.5.2.3	Energy re-use (KPI_{REUSE})	25
5.5.2.3.1	Formula	25
5.5.2.3.2	Definitions of terms	26
5.5.2.3.3	Clarity	26
5.5.2.3.4	Criteria	26
5.5.2.4	Renewable energy (KPI_{REN})	26
5.5.2.4.1	Formula	26
5.5.2.4.2	Definitions of terms	27
5.5.2.4.3	Clarity	27
5.5.2.4.4	Criteria	27
5.6	Measurement points and procedures	27
5.6.1	Objective KPIs for ICT sites	27
5.6.1.1	Energy consumption (KPI_{EC})	27
5.6.1.1.1	Measurement points	27
5.6.1.1.2	Measurement procedures	29
5.6.1.2	Task effectiveness (KPI_{TE})	29
5.6.1.2.1	Measurement points	29
5.6.1.2.2	Measurement procedures	30
5.6.1.3	Task effectiveness (KPI_{TE})	30
5.6.1.3.1	Measurement points	30
5.6.1.3.2	Measurement procedures	30
5.6.1.4	Energy re-use (KPI_{REUSE})	30
5.6.1.4.1	Measurement points	30
5.6.1.4.2	Measurement procedures	30
5.6.1.5	Renewable energy (KPI_{REN})	30
5.6.1.5.1	Measurement points	30
5.6.1.5.2	Measurement procedures	30
5.7	Classifications	31
5.7.1	KPI_{EC} presented as DC_G	31
5.7.2	KPI_{EP} presented as DC_{CLASS}	31
5.7.3	Application to groups of ICT sites	31
5.8	Reporting	31
Annex A (informative): Weighting values		32
A.1	General	32
A.2	Industry organizations	32
A.2.1	CRIP	32
A.2.2	eG4U	33
History		34

List of figures

Figure 1: Schematic of the functional elements of an ICT site	13
Figure 2: Schematic of energy measurement of a dedicated ICT site	13
Figure 3: Schematic of energy measurement of a mixed-use ICT site	14
Figure 4: Electrical energy flows	19
Figure 5: Energy flows for heat sinks.....	20
Figure 6: Schematic of Objective and Global KPIs.....	21
Figure 7: Measurement points for energy consumption	26

List of tables

Table 1: Implementation of Availability Class.....	15
Table A.1: DC_G bands used by CRIP	31
Table A.2: Weighting values used by CRIP.....	31
Table A.3: DC_{CLASS} bands used by CRIP.....	31
Table A.4: DC_G bands used by eG4U.....	32
Table A.5: Weighting values used by eG4U	32
Table A.6: DC_{CLASS} bands used by eG4U	32

Intellectual Property Rights

Essential patents

IPRs essential or potentially essential to the present document may have been declared to ETSI. The information pertaining to these essential IPRs, if any, is publicly available for **ETSI members and non-members**, and can be found in ETSI SR 000 314: "*Intellectual Property Rights (IPRs); Essential, or potentially Essential, IPRs notified to ETSI in respect of ETSI standards*", which is available from the ETSI Secretariat. Latest updates are available on the ETSI Web server (<https://ipr.etsi.org/>).

Pursuant to the ETSI IPR Policy, no investigation, including IPR searches, has been carried out by ETSI. No guarantee can be given as to the existence of other IPRs not referenced in ETSI SR 000 314 (or the updates on the ETSI Web server) which are, or may be, or may become, essential to the present document.

Trademarks

The present document may include trademarks and/or tradenames which are asserted and/or registered by their owners. ETSI claims no ownership of these except for any which are indicated as being the property of ETSI, and conveys no right to use or reproduce any trademark and/or tradename. Mention of those trademarks in the present document does not constitute an endorsement by ETSI of products, services or organizations associated with those trademarks.

Foreword

This draft European Standard (EN) has been produced by ETSI Technical Committee Access, Terminals, Transmission and Multiplexing (ATTM), and is now submitted for the combined Public Enquiry and Vote phase of the ETSI standards EN Approval Procedure.

The present document is part 3, sub-part 1 of a multi-part deliverable covering Global Key Performance Indicators for energy management of operational broadband deployment infrastructures as identified below:

Part 1: "General requirements";

Part 2: "Specific requirements";

Part 3-1: "ICT sites; Sub-part 1: DCEM";

Part 4-4: "Design assessments; Sub-part 4: Cable Access Networks".

Proposed national transposition dates	
Date of latest announcement of this EN (doa):	3 months after ETSI publication
Date of latest publication of new National Standard or endorsement of this EN (dop/e):	6 months after doa
Date of withdrawal of any conflicting National Standard (dow):	6 months after doa

Modal verbs terminology

In the present document "**shall**", "**shall not**", "**should**", "**should not**", "**may**", "**need not**", "**will**", "**will not**", "**can**" and "**cannot**" are to be interpreted as described in clause 3.2 of the [ETSI Drafting Rules](#) (Verbal forms for the expression of provisions).

"**must**" and "**must not**" are **NOT** allowed in ETSI deliverables except when used in direct citation.

Introduction

Energy costs continue to rise, a trend that will continue in the future, while broadband penetration is introducing new active equipment to the network architecture. In this context, and to reflect other environmental aspects of sustainability, it is vital that the main telecommunication operators implement effective general engineering of fixed and mobile broadband networks and sites provisioning, managing or using those networks (i.e. ICT sites) in order to respond to critical issues of energy consumption while proposing essential solutions to broadband deployment. To guide this process, it is essential that metrics are defined, termed Global Key Performance Indicators (KPIs), that enable energy usage to be managed more effectively.

The Global Key Performance Indicators specified in the ETSI EN 305 200 [i.11] series address operational infrastructures and do not consider design or operation of individual components comprising those infrastructures.

ETSI EN 305 200 [i.11] series of standards comprises:

- ETSI EN 305 200-1 [i.12] a generic requirements document addressing Global KPIs for operational infrastructures;
- a sub-series ETSI EN 305 200-2 that defines the Global KPIs, and drives energy management targets, for specific operational networks and sites and which describes how the Global KPIs are to be applied (which may be used to support future regulatory objectives):
 - ETSI EN 305 200-2-1 [i.13]: ICT sites;
 - ETSI EN 305 200-2-2 [i.14]: Fixed broadband access networks;

NOTE: Excluding cable access networks.

- ETSI EN 305 200-2-3 [i.15]: Mobile broadband access networks.

The standards do not define weightings of Objective KPIs or targets or limits for Global KPIs but may contain information on values that have been used by certain organizations.

- a sub-series ETSI EN 305 200-3 including the present document (which replaces ETSI ES 205 200-3) that defines particular implementations of Global KPIs within ICT sites based on the requirements of ETSI EN 305 200-2-1 [i.13], and which may define levels of performance to simplify and provide clearer understanding of Global KPIs allowing the evaluation of performance of energy use management in ICT sites.

The standards do not define weightings of Objective KPIs or targets or limits for Global KPIs but may contain information on values that have been used by certain organizations.

- a sub-series ETSI EN 305 200-4 including ETSI EN 305 200-4-4 [i.16] that defines design assessments of Global KPIs, and drives energy management targets, for specific operational networks and sites and which describes how the Global KPIs are to be applied (which may be used to support future regulatory objectives).

These standards may be considered to be a contribution to the application of ISO 50001 [i.17] in relation to the development of policy for the continuous improvement of energy management and will accelerate:

- the availability of operational infrastructure architectures and network implementations that use energy more efficiently;
- the definition and attainment objectives for other environmental aspects of sustainability for operational broadband networks.

The present document specifies the requirements for a Global KPI for energy management (KPI_{DCEM}) and their underpinning Objective KPIs for the ICT sites of broadband deployment which is a simplified version of the KPI_{EM} of ETSI EN 305 200-2-1 [i.13]. The requirements are mapped to the general requirements of ETSI EN 305 200-1 [i.12].

1 Scope

The present document specifies the requirements for a Global KPI for energy management (KPI_{DCEM}) and their underpinning Objective KPIs addressing the following objectives for the ICT sites of broadband deployment:

- energy consumption;
- task effectiveness;
- energy reuse;
- renewable energy.

KPI_{DCEM} is a simplified version of the KPI_{EM} of ETSI EN 305 200-2-1 [i.13] and the requirements are mapped to the general requirements of ETSI EN 305 200-1 [i.12].

Energy management of ICT sites comprises a number of independent layers. The present document addresses performance of infrastructures that supports the normal function of hosted ICT equipment (e.g. power distribution, environmental control, security and safety). The present document does not address other layers such as performance of ICT equipment itself, performance of usage of available processing power, and layers related to final service delivered (e.g. processing power required per itemized outcome) or overlay layers (e.g. energy consumption per itemized outcome).

The environmental impact and management of different energy sources are outside the scope of the present document.

Within the present document:

- clause 4 describes the energy parameters for ICT sites together with inclusions/exclusions of different energy contributions;
- clause 5 specifies the requirements for measurement, calculation, classification and reporting of KPI_{DCEM} .

2 References

2.1 Normative references

References are either specific (identified by date of publication and/or edition number or version number) or non-specific. For specific references, only the cited version applies. For non-specific references, the latest version of the referenced document (including any amendments) applies.

Referenced documents which are not found to be publicly available in the expected location might be found at <https://docbox.etsi.org/Reference/>.

NOTE: While any hyperlinks included in this clause were valid at the time of publication, ETSI cannot guarantee their long term validity.

The following referenced documents are necessary for the application of the present document.

- | | |
|-----|---|
| [1] | CEN EN 1434 series: "Heat meters". |
| [2] | CENELEC EN 50600-2-2: "Information technology - Data centre facilities and infrastructures - Part 2-2: Power distribution". |

2.2 Informative references

References are either specific (identified by date of publication and/or edition number or version number) or non-specific. For specific references, only the cited version applies. For non-specific references, the latest version of the referenced document (including any amendments) applies.

NOTE: While any hyperlinks included in this clause were valid at the time of publication, ETSI cannot guarantee their long term validity.

The following referenced documents are not necessary for the application of the present document but they assist the user with regard to a particular subject area.

- [i.1] Directive 2010/31/EU of the European Parliament and of the Council of 19 May 2010 on the energy performance of buildings.
- [i.2] CENELEC CLC/TR 50600-99-1: "Information technology; Data centre facilities and infrastructures; Part 99-1: Recommended practices for energy management".
- [i.3] CENELEC EN 50600-1: "Information technology; Data centre facilities and infrastructures; Part 1: General concepts".
- [i.4] CENELEC EN 50600-2-3: "Information technology; Data centre facilities and infrastructures; Part 2-3: Environmental control".
- [i.5] CENELEC EN 50600-2-4: "Information technology; Data centre facilities and infrastructures - Part 2-4: Telecommunications infrastructure".
- [i.6] CENELEC EN 50600-4-2: "Information technology; Data centre facilities and infrastructures; Part 4-2: Power usage effectiveness".
- [i.7] CENELEC EN 50600-4-3: "Information technology; Data centre facilities and infrastructures; Part 4-3: Renewable energy factor".
- [i.8] CENELEC EN 50600-4-6: "Information technology; Data centre facilities and infrastructures; Part 4-6: Energy reuse factor".
- [i.9] ETSI ES 203 228: "Environmental Engineering (EE); Assessment of mobile network energy efficiency".
- [i.10] ETSI EN 305 174-2: "Access, Terminals, Transmission and Multiplexing (ATTM); Broadband Deployment and Lifecycle Resource Management; Part 2: ICT Sites".
- [i.11] ETSI EN 305 200 series: "Access, Terminals, Transmission and Multiplexing (ATTM); Energy management; Operational infrastructures; Global KPIs".
- [i.12] ETSI EN 305 200-1: "Access, Terminals, Transmission and Multiplexing (ATTM); Energy management; Operational infrastructures; Global KPIs; Part 1: General requirements".
- [i.13] ETSI EN 305 200-2-1: "Access, Terminals, Transmission and Multiplexing (ATTM); Energy management; Operational infrastructures; Global KPIs; Part 2: Specific requirements; Sub-part 1: ICT sites".
- [i.14] ETSI EN 305 200-2-2: "Access, Terminals, Transmission and Multiplexing (ATTM); Energy management; Operational infrastructures; Global KPIs; Part 2: Specific requirements; Sub-part 2: Fixed broadband access networks".
- [i.15] ETSI EN 305 200-2-3: "Access, Terminals, Transmission and Multiplexing (ATTM); Energy management; Operational infrastructures; Global KPIs; Part 2: Specific requirements; Sub-part 3: Mobile broadband access networks".
- [i.16] ETSI EN 305 200-4-4: "Integrated broadband cable telecommunication networks (CABLE); Energy management; Operational infrastructures; Global KPIs; Part 4: Design assessments; Sub-part 4: Cable access networks".
- [i.17] ISO 50001: "Energy management systems - Requirements with guidance for use".

[i.18] ISO/IEC 30134: "Information technology -- Data centres -- Key performance indicators".

3 Definitions, symbols and abbreviations

3.1 Definitions

For the purposes of the present document, the following terms and definitions apply:

energy consumption: total consumption of energy by an operational infrastructure

energy management: combination of reduced energy consumption and increased task effectiveness, re-use of energy and use of renewable energy

energy re-use: transfer or conversion of energy (typically in the form of heat) produced by the operational infrastructure to do other work

ICT equipment: equipment providing data storage, processing and transport services

NOTE: A combination of information technology equipment and network telecommunications equipment.

ICT equipment load: total requirement for power by a set of Information Technology Equipment (ITE) and/or Network Telecommunications Equipment (NTE)

ICT site: site containing structures or group of structures dedicated to the accommodation, interconnection and operation of ICT equipment together with all the facilities and infrastructures for power distribution and environmental control together with the necessary levels of resilience and security required to provide the desired service availability

Information Technology Equipment (ITE): equipment providing data storage, processing and transport services for subsequent distribution by Network Telecommunications Equipment (NTE)

Network Data Centre (NDC): data centre embedded within the core network

NOTE: A network data centre of a cable access network may be termed a master head-end.

Network Telecommunications Equipment (NTE): equipment within the boundaries of, and dedicated to providing connection to, core and/or access networks

objective KPI: KPI assessing one of the objectives of operational energy performance which is subsequently used to define a Global KPI for energy management

operational infrastructure: combination of ICT equipment together with the power supply and environmental control systems necessary to ensure provision of service

Operator Site (OS): premises accommodating Network Telecommunications Equipment (NTE) providing direct connection to the core and access networks and which may also accommodate Information Technology Equipment (ITE)

NOTE 1: An operator site that is only connected to the core network is considered as a network data centre.

NOTE 2: An operator site of a cable access network may be termed a local head-end.

renewable energy: energy produced from dedicated generation systems using resources that are naturally replenished and for which the energy required for production does not exceed 10 % of the energy produced

NOTE: Directive 2010/31/EU [i.1] defines "energy from renewable sources" as energy from renewable non-fossil sources, namely wind, solar, aerothermal, geothermal, hydrothermal and ocean energy, hydropower, biomass, landfill gas, sewage treatment plant gas and biogases.

task effectiveness: measure of the work done (as a result of design and/or operational procedures) for a given amount of energy consumed

3.2 Symbols

For the purposes of the present document, the following symbols apply:

Δt	maximum time variation between measurement points of the different Objective KPIs within a given Global KPI
C	energy consumption of an ICT site
DC_{CLASS}	banding applied to KPI_{EP} within KPI_{DCEM}
DC_G	banding applied to KPI_{EC} within KPI_{DCEM}
EC_{REN}	energy consumption of an ICT site from renewable source
EC_{REUSE}	energy re-used from an ICT site
k	assessment period index
KPI_{DCEM}	global KPI of energy management for data processing and communications
KPI_{EC}	objective KPI of energy consumption
KPI_{EM}	global KPI of energy management
KPI_{EP}	global KPI of energy performance within KPI_{DCEM}
KPI_{REN}	objective KPI of renewable energy usage
KPI_{REUSE}	objective KPI of energy re-use
KPI_{TE}	objective KPI of task effectiveness
L	energy consumption of ICT equipment of an ICT site
T_{KPI}	period of time over which ObjectiveKPIs are assessed
T_{REPEAT}	minimum time between which the ObjectiveKPIs can be assessed to determine relevant trend information
W_{REN}	weighting factor applied to KPI_{REN}
W_{REUSE}	weighting factor applied to KPI_{REUSE}

3.3 Abbreviations

For the purposes of the present document, the following abbreviations apply:

ATTM	Access, Terminals, Transmission and Multiplexing
CEN	European Committee for Normalization
CENELEC	European Committee for Electrotechnical Standardization
CHP	Combined Heat and Power
CLC	CENELEC
CLC/TR	CENELEC Technical Report
DCEM	Data processing and Communications Energy Management
DG JRC	Directorate General (of the European Commission) Joint Research Centre
EC	European Commission
ICT	Information Communications Technology
IEC	International Electrotechnical Committee
ISO	International Standards Organization
ITE	Information Technology Equipment
KPI	Key Performance Indicator
NDC	Network Data Centre
NTE	Network Telecommunications Equipment
OS	Operator Site
PDU	Power Distribution Unit
UPS	Uninterruptible Power Supply

4 Energy management of ICT sites

4.1 General

4.1.1 Measured energy

The energy referred to in Figure 2, Figure 3 and elsewhere in the present document may be referred to as "final energy" and excludes losses from production or transmission to the measurement boundary.

4.1.2 Dedicated ICT sites

The ICT sites addressed by the present document are Operator Sites (OSs) and Network Data Centres (NDCs). It should be noted that an OS that is only connected to the core network is considered to be an NDC.

With reference to the schematic in Figure 1:

- an NDC accommodates a mixture of information technology equipment (ITE) and network telecommunication equipment (NTE);
- an OS will also accommodate a mixture of ITE and NTE - where the NTE may provide connections to connections to core, fixed access, terrestrial mobile access and satellite mobile access network infrastructures;
- the present document does not differentiate between ITE and NTE and the generic term ICT equipment is used.

The design and configuration of ICT sites varies dependent upon their function and overall availability objectives. CENELEC EN 50600-2 [2], [i.4] and [i.5] standards provide requirements for the facilities and infrastructures that may be required. The primary task of the ICT site is the effective function of the ICT equipment which, in turn, defines requirements for the power distribution, environmental control, security and telecommunications cabling infrastructures and the other control and support facilities necessary for the maintenance of that function. This is shown schematically in Figure 1.

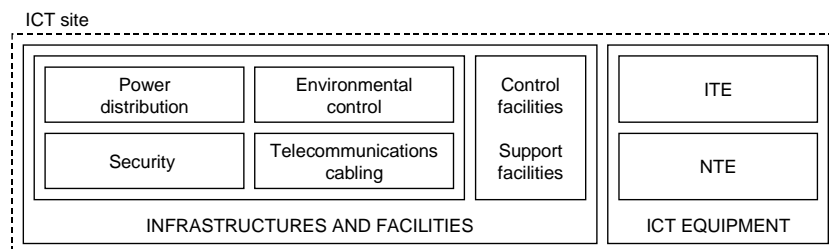


Figure 1: Schematic of the functional elements of an ICT site

For a dedicated ICT site, the energy management Objective KPIs of the ICT site take into account:

- the energy consumption of the ICT site (from both renewable and non-renewable sources);
- the task effectiveness of the ICT site (i.e. a measure of the consumption by the ICT equipment versus that of the infrastructure and facilities);
- the possibility of the re-use of waste energy from the ICT site.

As a result it is required to be able to measure the energy transfer at points 1, 2, 3 and 4 as shown schematically in Figure 2.

4.1.3 Mixed-use ICT sites

For a mixed-use premises accommodating an ICT site, the energy management Objective KPIs are those of the ICT site as described in clause 4.1.2. As a result it is required to be able to measure the energy transfer at points A, B and C as shown in Figure 3 in addition to point 3 of Figure 2.

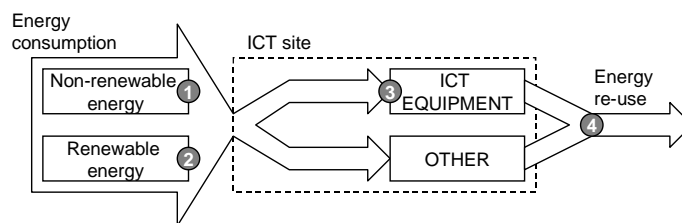


Figure 2: Schematic of energy measurement of a dedicated ICT site

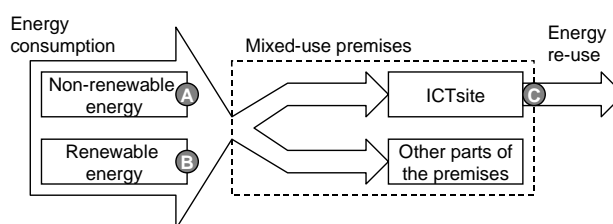


Figure 3: Schematic of energy measurement of a mixed-use ICT site

4.1.4 Groups of ICT sites

The Global KPI (KPI_{DCEM}) of clause 5.1.1 and the underpinning Objective KPIs of clause 5.1.2 may be applied to individual ICT sites, whether in dedicated or mixed-use premises, or to groups of ICT sites under common governance.

The selection of ICT sites to be included in groups shall reflect a common purpose i.e. groups of OSs or groups of NDCs. The use of standard ETSI ES 203 228 [i.9] may help to determine such ICT sites.

A value for the Global KPI (KPI_{DCEM}) of clause 5.1.1 is only valid if all the Objective KPIs are applied to the same group of ICT sites.

4.2 Related standards

The definition of an ICT site in the present document (see clause 3.1) is a modification of a common definition of data centres applied in standards prepared by ISO/IEC JTC1 SC39 (ISO/IEC 30134 [i.18] series), CENELEC TC215 (EN 50600 series) and that published in data centre landscaping documents produced by the CEN/CENELEC/ETSI Coordination Group on Green Data Centres.

This reflects the similarity between NDC and OS infrastructures. As indicated in clause 4.1, the present document does not differentiate between NDC and OS infrastructures.

CENELEC TC215 has published standards in the CENELEC EN 50600 series generally entitled "Information technology; Data centre facilities and infrastructures". These standards address the design, operation, management and resource management of data centres including:

- General:
 - CENELEC EN 50600-1: General concepts [i.3];
- Design:
 - CENELEC EN 50600-2-2: Power supply and distribution [2];
 - CENELEC EN 50600-2-3: Environmental control [i.4];
 - CENELEC EN 50600-2-4: Telecommunications cabling infrastructure [i.5].

CENELEC EN 50600-1 [i.3] uses the design solutions of CENELEC EN 50600-2-2 [2], CENELEC EN 50600-2-3 [i.4] and CENELEC EN 50600-2-4 [i.5] to define an overall Availability Class for a data centre.

Examples of design concepts of the Availability Class for each infrastructure are shown in Table 1.

Table 1: Implementation of Availability Class

Availability Class	Class 1	Class 2	Class 3	Class 4
Availability	Low	Medium	High	Very high
Power supply infrastructure (see CENELEC EN 50600-2-2 [2])	Single source	Redundant source - Single path to primary distribution equipment	Redundant source - Multiple paths to primary distribution equipment	Multiple source - Multiple paths to primary distribution equipment
Power distribution infrastructure (see CENELEC EN 50600-2-2 [2])	Single path	Single path - redundancy of components	Redundant path	Redundant path - fault tolerant except during maintenance via redundancy of components
Environmental control infrastructure (see CENELEC EN 50600-2-3 [i.4])	Single system	Single system with redundant devices	Multi-path Concurrent repair/operate solution	Multi-path Concurrent repair/operate and fault tolerant solution
Telecommunications cabling infrastructure (see CENELEC EN 50600-2-4 [i.5])	Single-path using direct connections or fixed infrastructure with single access network connection	Single-path using fixed infrastructure with multiple access network connections	Multi-path using fixed infrastructure with diverse pathways with multiple access network connections	Multi-path using fixed infrastructure with diverse pathways and redundant distribution zones and multiple access network connections

The increasingly complexity of the higher classes for each infrastructure generally involves more equipment which consumes energy.

In addition, CENELEC EN 50600-2-2 [2] and CENELEC EN 50600-2-3 [i.4] specify requirements for energy efficiency enablement which define locations for the measurement of energy consumption and related parameters.

In addition, CENELEC EN 50600-4 series ([i.6] to [i.8]) standards specify resource management KPIs (and are, in many cases, the European implementation of ISO/IEC 30134 [i.18] standards) which are useful in the development of ETSI EN 305 200-2-1 [i.13] and the present document.

5 Global KPI for ICT sites (KPI_{DCEM})

5.1 General

5.1.1 Global KPI (KPI_{DCEM}) for ICT sites

KPI_{DCEM} is a simplified formulation of a KPI_{EM} of ETSI EN 305 200-2-1 [i.13] and separately describes the energy consumption and energy performance of a single ICT site or a group of ICT sites.

KPI_{DCEM} is a combination of two separate KPIs as follows:

- 1) the Objective KPI for energy consumption expressed as KPI_{EC} ;
- 2) a combination of Objective KPIs for energy performance expressed as KPI_{EP} of the form:

$$KPI_{EP} = f(KPI_{TE}, KPI_{REUSE}, KPI_{REN})$$

where:

KPI_{EC} = Objective KPI for energy consumption (see clause 5.1.2.1);

KPI_{TE} = Objective KPI for task effectiveness (see clause 5.1.2.2);

KPI_{REUSE} = Objective KPI for energy re-use (see clause 5.1.2.3);

KPI_{REN} = Objective KPI for renewable energy (see clause 5.1.2.4).

NOTE 1: KPI_{EC} approximates to E_{DC} in CENELEC EN 50600-4-2 [i.6], CENELEC EN 50600-4-3 [i.7] and CENELEC EN 50600-4-6 [i.8] although boundary conditions may differ.

NOTE 2: KPI_{TE} approximates to power usage effectiveness of CENELEC EN 50600-4-2 [i.6], although boundary conditions may differ.

NOTE 3: KPI_{REN} approximates to renewable energy factor in CENELEC EN 50600-4-3 [i.7], although boundary conditions may differ.

NOTE 4: KPI_{REUSE} approximates to energy reuse factor in CENELEC EN 50600-4-6 [i.8], although boundary conditions may differ.

KPI_{EP} is presented as a banded value DC_{CLASS} (see clause 5.7.2).

The use of bands does not generally allow the trend analysis as per clause 6 of ETSI EN 305 200-1 [i.12], but the reporting of the Objective KPIs and the relevant weightings as required by clause 5.8 does allow the trend analysis to be applied to those parameters.

5.1.2 Objective KPIs

5.1.2.1 Energy consumption (KPI_{EC})

The present document supports the reduction in the energy consumption required to provide a given level of service as a primary objective.

The KPI_{EC} may be improved by local actions within individual ICT sites and/or global actions applied to the group under common governance.

Requirements or recommendations in relation to the improvement of the energy consumption of the ICT equipment and support infrastructures are not within the scope of the present document. Requirements and recommendations for practices enabling reductions in energy consumption of operational data centres which may be applied to all ICT sites are described in a number of documents including:

- ETSI EN 305 174-2 [i.10];
- CENELEC/TR 50600-99-1 [i.2].

5.1.2.2 Task effectiveness (KPI_{TE})

The present document supports the improvement in task effectiveness as a primary objective.

KPI_{TE} is the ratio of the total energy consumption of the ICT site to the energy consumption of the ICT equipment in the ICT site. KPI_{TE} is dimensionless and has the following properties:

- $KPI_{TE} \geq 1$;
- $KPI_{TE} = 1$ is an ideal value.

In an ICT site, an improvement of the KPI for task effectiveness (KPI_{TE}) reflects a reduction of the overall energy consumption required to both power a given ICT equipment load and to support (e.g. cool) the equipment associated with that load over a given period of time.

It should be noted that the work done by the load is not a basis for the KPI_{TE} due to the wide variety of operations performed by the ICT equipment in ICT sites.

5.1.2.3 Energy re-use (KPI_{REUSE})

The present document supports the re-use of energy as a secondary objective.

KPI_{REUSE} is the ratio of re-used energy by facilities, external to the ICT site, to the total energy consumption of the ICT site. Thermal energy can be reused in different forms, liquid or gas (air). KPI_{REUSE} shall be measurable and quantifiable. It is a dimensionless number.

The KPI_{REUSE} shall reflect:

- a preference for energy consumption reduction rather than re-use;
- a preference for re-use of energy in the form of heat generated by the ICT equipment rather than from poorly designed facilities and infrastructures.

In all cases "non-use" is better than "re-use".

All energy input to a ICT site is converted into heat. Possible initiatives to for re-use the heat produced by the ICT equipment in ICT sites include:

- heating of water;
- heating of facilities within the ICT site (e.g. pre-heating of diesel generators);
- heating of other premises (commercial or residential).

The KPI for energy re-use (KPI_{REUSE}):

- provides the main incentive to the re-use of heat up to the quantity produced by the ICT equipment load;
- provides a lower incentive to the re-use of heat from the technical environment, including but not limited to, cooling, power distribution, security systems, safety systems and lighting.

KPI_{REUSE} can only be assessed and included in subsequent calculation and presentation of KPI_{EM} if the energy re-used is measurable at the intended point of delivery i.e. any losses in the delivery system shall not be included.

5.1.2.4 Renewable energy (KPI_{REN})

The present document supports the use of renewable energy as a secondary objective.

KPI_{REN} is the ratio of energy consumption from renewable sources to the total energy consumption of the ICT site. It is a dimensionless number.

Only the sources contributing to KPI_{EC} will be taken into account, whether dedicated or shared.

KPI_{REN} takes account of renewable energy that is produced by:

- a) sources dedicated to and directly serving an ICT site;
- b) sources (an ICT site or generator) under common governance with the ICT site(s) they serve and from which it is conveyed by the utility (grid) serving an ICT site or ICT sites in the group defined for the application of the KPI_{EM} .

In the case of (b):

- the renewable energy shall not be included within KPI_{REN} of the recipient site if it is already included in the proportion of "green" energy within the energy mix of the utility (grid) supplied to the ICT site as defined in European standards or other international schemes;

NOTE: Any proportion in the mix of utility electricity supplies certified as "renewable " (e.g. based on the carbon footprint of the energy source) by electricity suppliers or in accordance with nationally recognized schemes is not recognized by the present document.

- the portion of such energy allocated to the recipient ICT site added to other ICT site consumptions shall not exceed the overall energy consumption by the ICT site.

5.2 Scale

The DC_G element of KPI_{DCEM} is the Objective KPI for energy consumption (KPI_{EC}) which is measured in MWh.

Large ICT sites that are fully utilized will naturally have higher values of KPI_{EC} and result in a higher banding for DC_G (see clause 5.7.1).

The DC_{CLASS} element of KPI_{DCEM} is calculated as KPI_{EP} which is a unit less ratio which combines the Objective KPIs for task effectiveness (KPI_{TE}) mitigated by the weighted subtractions of any valid energy re-use (KPI_{REUSE}) and any energy contribution from renewable sources (KPI_{REN}).

This approach allows:

- the energy impact of all scales of ICT sites to be assessed but not compared;
- regulatory objectives to be applied to groups of ICT sites which have the greatest individual energy impact.

5.3 Utilization and evolution

The Objective KPI for energy consumption (KPI_{EC}) is measured in MWh. The DC_{CLASS} element of KPI_{DCEM} is calculated as KPI_{EP} which is a unit less ratio. As a result, a given ICT site is able to be assessed throughout its operational life.

KPI_{DCEM} is applicable from early stages, when KPI_{EC} is low and KPI_{EP} may be higher than the design objective (i.e. task effectiveness may be poorer than that of a fully utilized ICT site), to a more complete utilization stage when KPI_{EP} should match the design goals and KPI_{EC} is higher.

This approach encourages the:

- re-engineering of the supporting infrastructures (e.g. power distribution and environmental control systems) in older legacy ICT sites which tend to exhibit high KPI_{EP} values;
- optimization of ICT equipment loads by selection, configuration and utilization of equipment and management systems.

5.4 Definition of boundaries

5.4.1 General

The ICT site(s) under consideration shall be viewed as a system with boundaries through which energy dedicated to the ICT site(s) flows.

Two forms of flow can be used to operate an ICT site:

- electrical energy providing function to the:
 - ICT equipment;
 - environmental control systems supporting the function of the ICT equipment;
 - other facilities and infrastructure of the ICT site;
- thermal energy in the form of:
 - heat from a source: energy flows from the source into the ICT site which can be used for cooling and, in rare cases, for producing electricity;
 - heat discharge: energy flows from the ICT site to a heat discharge system for cooling purposes.

Energy in either form shall not be counted twice.

5.4.2 Flows of electrical energy

Figure 4 shows a schematic in relation to the electrical energy input to the ICT site.

Sources include:

- delivered electricity supply (e.g. utility);
- dedicated local generation of electricity (via conversion of fuels and/or local heat sources).

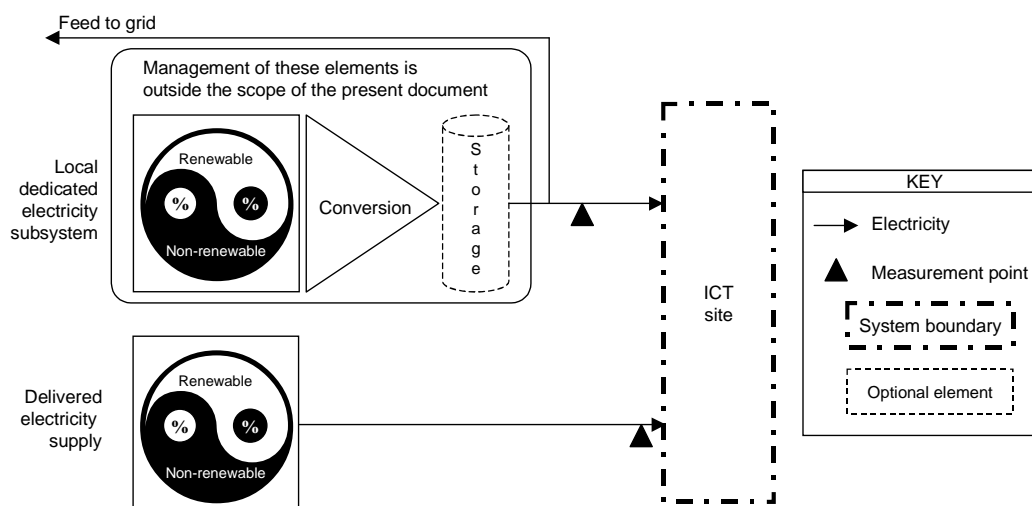


Figure 4: Electrical energy flows

When an electricity generating subsystem is dedicated to the ICT site (e.g. a combination of power generators and energy storage), the electrical energy flow from the subsystem is taken into consideration at output of the subsystem to ICT site. Other flows of electrical energy from the subsystem (e.g. feed to grid) are not taken into consideration.

Delivered electricity is taken into account at its delivery point to the ICT site.

5.4.3 Flows of thermal energy

5.4.3.1 ICT site cooling (heat discharge systems)

Figure 5 shows a schematic describing the thermal energy exchange with heat discharge systems for the ICT site.

Heat discharge systems include:

- air and/or water providing cooling;
- public or district heat collection networks;
- local dedicated cooling subsystems such as adsorption chillers powered by locally generated heat including that of combined heat and power (CHP) systems.

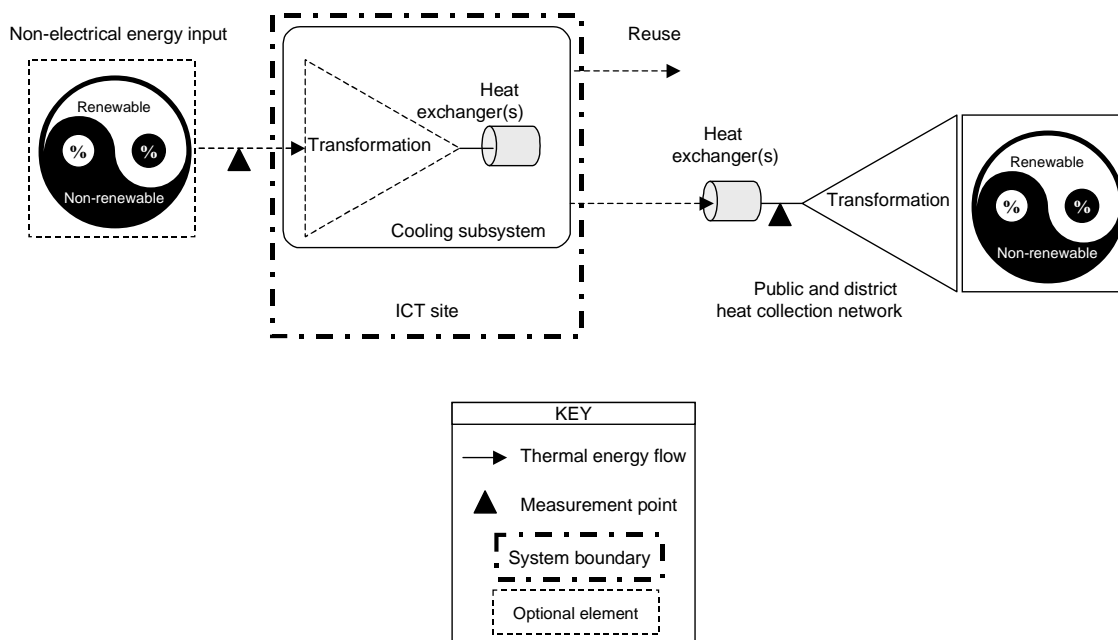


Figure 5: Energy flows for heat sinks

All energy flows required to operate heat discharge systems and not already accounted for in clauses 5.4.2 and 5.4.3.2 shall be taken into account as described in clause 5.4.4.

5.4.3.2 Heat distribution networks

Heat from public or district distribution networks shall be taken into account at ICT site input.

5.4.4 Inclusion in Objective KPIs

In order for Objective KPIs to be calculated, all forms of energy flow including those used only under fault conditions shall be metered as, or converted to, MWh.

All electrical energy flows as defined in clause 5.4.2 shall be allocated to KPI_{EC} . When direct measurement is not possible the calculations of clause 5.6.1.1.1 shall be applied.

Cooling resulting from use of natural resources (e.g. air, water, heat) and waste heat including CHP shall not be allocated to KPI_{EC} . All other thermal flows as defined in clause 5.4.3 shall be allocated to KPI_{EC} . When direct measurement is not possible for cooling, an estimate shall be calculated using a fixed factor applied to heat extracted (see clause 5.6.1.1.1).

The following thermal flows shall not be allocated to KPI_{EC} :

- between heat exchangers and natural resources (e.g. air, water, heat);
- between heat exchangers waste heat including CHP.

Heat discharge flows to public or district networks shall not be taken into account for KPI_{REUSE} .

5.5 Formulae

5.5.1 Global KPI for ICT sites (KPI_{DCEM})

5.5.1.1 General

5.5.1.1.1 KPI_{EC}

An assessment of KPI_{DCEM} requires that the energy supplied to the ICT site provides all the primary functions of the ICT site (i.e. ICT equipment load, environmental control etc.). If the supply of energy of any of the non-ICT equipment loads is provided by other supplies not included in KPI_{EC} then KPI_{DCEM} cannot be assessed.

5.5.1.1.2 KPI_{EP}

Within KPI_{DCEM} , DC_{CLASS} is a banded representation of the combinations of Objective KPIs of energy performance (KPI_{EP}).

KPI_{EP} is defined mathematically as:

$$KPI_{EP} = KPI_{TE} \times (1 - W_{REUSE} \times KPI_{REUSE}) \times (1 - W_{REN} \times KPI_{REN}), \text{ subject to a minimum value of 0.}$$

This is shown schematically in Figure 6. The contribution of energy re-use and the use of renewable energy is subject to weighting (see clause 5.5.1.5).

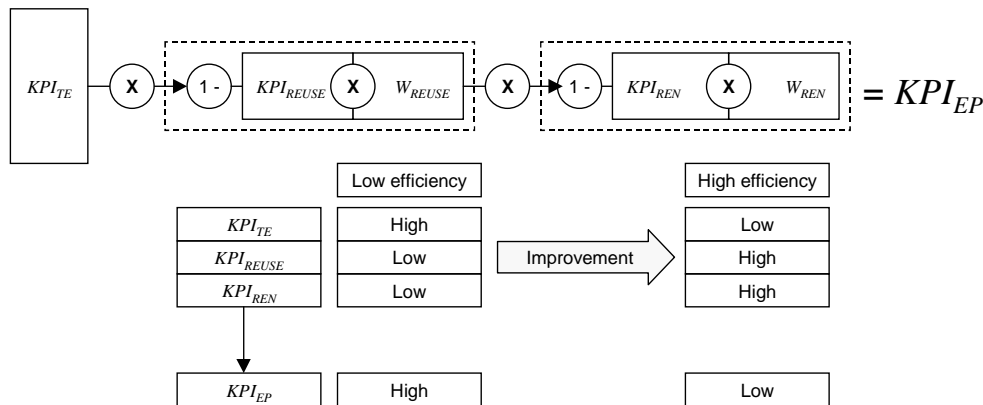


Figure 6: Schematic of Objective and Global KPIs

When applied to groups of ICT sites, summations are applied as follows:

$$KPI_{EP} = \frac{\sum_{n=1}^N KPI_{EC_n} \times KPI_{EP_n}}{\sum_{n=1}^N KPI_{EC_n}}$$

where:

n = ICT site number;

N = total number of ICT sites.

5.5.1.2 Definition of terms

See clause 3.2.

5.5.1.3 Clarity

KPI_{EC} and KPI_{EP} both meet the requirements of ETSI EN 305 200-1 [i.12].

5.5.1.4 Criteria

KPI_{DCEM} is based on Objective KPIs which shall meet the requirements listed below.

In accordance with the terminology of clause 5.6 of ETSI EN 305 200-1 [i.12]:

- the Objective KPIs shall be measured on a single ICT site (or a common group of ICT sites) over the same period of time (T_{KPI}) subject to the allowed variation (Δt);
- the default value of T_{KPI} shall be 365 days (in order to take account of the climatic variations that will be experienced by the operational infrastructure);
- T_{REPEAT} shall be between 7 days and one calendar month;
- the maximum time difference in the periods of assessment, Δt , of the objective KPIs shall be 7 days - by ensuring that the maximum variation is maintained with the required value of 7 days whereas T_{KPI} is one year, the impact on the accuracy of the resulting Objective KPIs will be minimal. If improved accuracy is required the actual value of Δt shall be reduced.

5.5.1.5 Weighting factors

5.5.1.5.1 General

The contributions of energy re-use and the use of renewable energy are subject to weighting. Clause 5.5.1.5.1 and clause 5.5.1.5.3 provide guidance on the range of weighting values for W_{REUSE} and W_{REN} respectively. In order to evaluate trend analysis the weightings applied shall be consistent for the period covered by the analysis.

When applied to a group of ICT sites under common governance, the same weighting shall apply to all ICT sites.

5.5.1.5.2 Energy re-use (W_{REUSE})

In accordance with clause 5.1.2.3, the contribution of energy re-use to the reduction of KPI_{EP} shall not undermine efforts to reduce energy consumption. As a result, the value of W_{REUSE} shall encourage "non-use rather than re-use" as required in clause 5.1.2.3.

The general application of this weighting factor requires $0 \leq W_{REUSE} \leq 1$. See clause 5.7.1.

Annex A provides details on weighting values employed by certain industry organizations. Other weightings may be used to meet specific objective needs provide that they fall within the above range and their application is in accordance with clause 5.5.1.5.1.

5.5.1.5.3 Renewable energy (W_{REN})

In accordance with ETSI EN 305 200-1 [i.12], the application of KPI_{REN} shall not undermine efforts to reduce energy consumption. If all energy was generated locally from renewable sources and $W_{REN} = 1,0$, KPI_{EM} would be zero - independent of total consumption or task effectiveness. This situation, although obviously extreme, would be undesirable since if so much energy were available from locally generated renewable sources it should not be "wasted" by profligate energy consumption or poor task effectiveness within the infrastructures of broadband deployment.

The general application of this weighting factor requires $0 \leq W_{REN} \leq 1$. See clause 5.7.1.

Annex A provides details on weighting values employed by certain industry organizations. Other weightings may be used to meet specific objective needs provide that they fall within the above range and their application is in accordance with clause 5.5.1.5.1.

5.5.2 Objective KPIs for ICT sites

5.5.2.1 Energy consumption (KPI_{EC})

5.5.2.1.1 Formula

$KPI_{EC}^{(k)}$ is defined mathematically as:

$$KPI_{EC}^{(k)} = C^{(k)} = \sum_{s=1}^S C_s^{(k)}$$

When applied to groups of ICT sites, summations are applied as follows:

$$KPI_{EC}^{(k)} = \sum_{n=1}^N C_n^{(k)}$$

5.5.2.1.2 Definitions of terms

$C^{(k)}$ =	total energy consumption by the ICT site during the KPI assessment period k (in the interval t_k^{begin} to t_k^{end}) as described in detail in clause 5.6 of ETSI EN 305 200-1 [i.12]
$C_n^{(k)}$ =	total energy consumption by ICT site n during the KPI assessment period k (in the interval t_k^{begin} to t_k^{end}) as described in detail in clause 5.6 of ETSI EN 305 200-1 [i.12]
$C_s^{(k)}$ =	total energy consumption by ICT site from energy source d during the KPI assessment period k (in the interval t_k^{begin} to t_k^{end}) as described in detail in clause 5.6 of ETSI EN 305 200-1 [i.12]
n =	ICT site number
N =	total number of ICT sites
s =	energy source number
S =	total number of separate energy sources of the ICT site including those provided only during fault conditions

5.5.2.1.3 Clarity

See clause 5.5.1.3.

5.5.2.1.4 Criteria

All the energy required to maintain the ICT site at its design level of service availability, such as cooling, power distribution, surveillance systems, access control, flood and fire detection, fire extinguishing system and lighting shall be included any measurements of $C_{s,n}^{(k)}$.

Each ICT site shall operate at its design level of service availability during the period of assessment. This includes any circumstances during which fault conditions exist and alternative sources are used (e.g. testing, online standby duty).

All other energy consumption within the boundaries of the ICT site but not necessary to deliver the design level of service availability (such as office facilities) are out of the scope and shall not be included in any measurements of $C_{s,n}^{(k)}$.

5.5.2.2 Task effectiveness (KPI_{TE})

5.5.2.2.1 Formula

$KPI_{TE}^{(k)}$ is defined mathematically as:

$$KPI_{TE}^{(k)} = \frac{C^{(k)}}{L^{(k)}}$$

When applied to groups of ICT sites, summations are applied as follows:

$$KPI_{TE}^{(k)} = \frac{\sum_{n=1}^N C_n^{(k)}}{\sum_{n=1}^N L_n^{(k)}}$$

5.5.2.2.2 Definitions of terms

$C^{(k)}$ =	total energy consumption of the ICT site during the KPI assessment period k (in the interval t_k^{begin} to t_k^{end}) as described in detail in clause 5.6 of ETSI EN 305 200-1 [i.12]
$C_n^{(k)}$ =	total energy consumption of ICT site n during the KPI assessment period k (in the interval t_k^{begin} to t_k^{end}) as described in detail in clause 5.6 of ETSI EN 305 200-1 [i.12]
$L^{(k)}$ =	total energy consumed by ICT load in the ICT site during the KPI assessment period k (in the interval t_k^{begin} to t_k^{end}) as described in detail in clause 5.6 of ETSI EN 305 200-1 [i.12]
$L_n^{(k)}$ =	total energy consumed by ICT load in ICT site n during the KPI assessment period k (in the interval t_k^{begin} to t_k^{end}) as described in detail in clause 5.6 of ETSI EN 305 200-1 [i.12]
n =	ICT site number
N =	total number of ICT sites

5.5.2.2.3 Clarity

KPI_{TE} meets the requirements of ETSI EN 305 200-1 [i.12].

5.5.2.2.4 Criteria

Measurement criteria for $C_n^{(k)}$ are specified in clauses 5.4 and 5.6.1.1.

Measurement criteria for $L_n^{(k)}$ are specified in clause 5.6.1.3.

All the ICT equipment shall be taken into account in the measurement of L . The energy consumption of other equipment such as rack cooling systems, room air handling units and office utilities shall not be included in L .

5.5.2.3 Energy re-use (KPI_{REUSE})

5.5.2.3.1 Formula

KPI_{REUSE} can only be assessed and included in subsequent calculation and presentation of KPI_{EM} if the energy re-used is measurable in MWh at the intended point of delivery i.e. any losses in the delivery system shall not be included.

$KPI_{REUSE}^{(k)}$ is defined mathematically as:

$$KPI_{REUSE}^{(k)} = \frac{EC_{REUSE}^{(k)}}{C^{(k)}}$$

When applied to groups of ICT sites, summations are applied as follows:

$$KPI_{REUSE}^{(k)} = \frac{\sum_{n=1}^N EC_{REUSE_n}^{(k)}}{\sum_{n=1}^N C_n^{(k)}}$$

5.5.2.3.2 Definitions of terms

$C^{(k)}$ = total energy consumption of the ICT site during the KPI assessment period k (in the interval t_k^{begin} to t_k^{end}) as described in detail in clause 5.6 of ETSI EN 305 200-1 [i.12]

$C_n^{(k)}$ = total energy consumption of ICT site n during the KPI assessment period k (in the interval t_k^{begin} to t_k^{end}) as described in detail in clause 5.6 of ETSI EN 305 200-1 [i.12]

$EC_{REUSE}^{(k)}$ = total energy re-used from the ICT site during the KPI assessment period k (in the interval t_k^{begin} to t_k^{end}) as described in detail in clause 5.6 of ETSI EN 305 200-1 [i.12]

$EC_{REUSE_n}^{(k)}$ = total energy re-used from ICT site n during the KPI assessment period k (in the interval t_k^{begin} to t_k^{end}) as described in detail in clause 5.6 of ETSI EN 305 200-1 [i.12]

5.5.2.3.3 Clarity

KPI_{REUSE} meets the requirements of ETSI EN 305 200-1 [i.12].

5.5.2.3.4 Criteria

Measurement criteria for $C_n^{(k)}$ are specified in clauses 5.4 and 5.6.1.1.

Measurement criteria for EC_{REUSE} are specified in clause 5.6.1.4.

5.5.2.4 Renewable energy (KPI_{REN})

5.5.2.4.1 Formula

$KPI_{REN}^{(k)}$ is defined mathematically as:

$$KPI_{REN}^{(k)} = \frac{EC_{REN}^{(k)}}{C^{(k)}}$$

When applied to groups of ICT sites, summations are applied as follows:

$$KPI_{REN}^{(k)} = \frac{\sum_{n=1}^N EC_{REN_n}^{(k)}}{\sum_{n=1}^N C_n^{(k)}}$$

5.5.2.4.2 Definitions of terms

$C^{(k)}$ = total energy consumption of the ICT site during the KPI assessment period k (in the interval t_k^{begin} to t_k^{end}) as described in detail in clause 5.6 of ETSI EN 305 200-1 [i.12]

$C_n^{(k)}$ = total energy consumption of the ICT site n during the KPI assessment period k (in the interval t_k^{begin} to t_k^{end}) as described in detail in clause 5.6 of ETSI EN 305 200-1 [i.12]

$EC_{REN}^{(k)}$ = total energy consumption from renewable sources of the ICT site during the KPI assessment period k (in the interval t_k^{begin} to t_k^{end}) as described in detail in clause 5.6 of ETSI EN 305 200-1 [i.12]

$EC_{RENn}^{(k)}$ = total energy consumption from renewable sources of ICT site n during the KPI assessment period k (in the interval t_k^{begin} to t_k^{end}) as described in detail in clause 5.6 of ETSI EN 305 200-1 [i.12]

5.5.2.4.3 Clarity

KPI_{REN} meets the requirements of ETSI EN 305 200-1 [i.12].

5.5.2.4.4 Criteria

Measurement criteria for $C_n^{(k)}$ are specified in clauses 5.4 and 5.6.1.1.

Measurement criteria for EC_{REN} are specified in clauses 5.4 and 5.6.1.5.

5.6 Measurement points and procedures

5.6.1 Objective KPIs for ICT sites

5.6.1.1 Energy consumption (KPI_{EC})

5.6.1.1.1 Measurement points

Requirements for the measurement of the energy consumption parameters for ICT sites are specified in CENELEC EN 50600-2-2 [2]. The present document applies this approach to all ICT sites.

Figure 7 provides additional detail relevant to the present document.

The treatment of energy sources shall be as specified in clause 5.4.

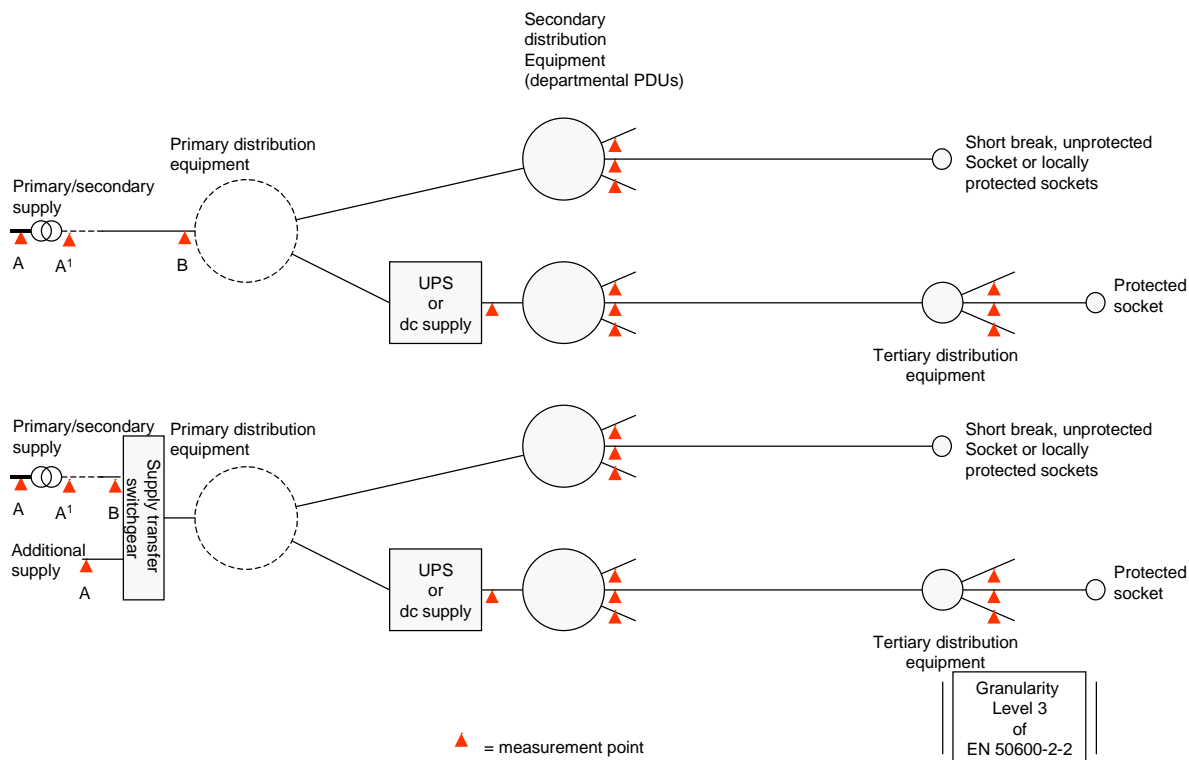


Figure 7: Measurement points for energy consumption

The consumption $C_{s,n}^{(k)}$ from energy sources (including those provided only during fault conditions) shall be determined as described below.

Electrical energy from delivered supply(s):

- the consumption $C_{s,n}^{(k)}$ shall be measured as MWh at the input to the transformer (points A in Figure 6) in which case $MP_{s,n}^{(EC)}=0$;
- where this is not possible:
 - $C_{s,n}^{(k)}$ may be measured at the output of the transformer (points A¹ in Figure 7) and $MP_{s,n}^{(EC)}=0,015$ (i.e. 1,5 % of additional penalty);
 - $C_{s,n}^{(k)}$ may be measured at the input to the switchgear in the primary distribution equipment or at the input to the supply transfer switch (if present) of the ICT site (points B in Figure 7) and $MP_{s,n}^{(EC)}=0,02$ (i.e. 2 % of additional penalty).

Electrical energy from local dedicated generating subsystems:

- the consumption $C_{s,n}^{(k)}$ shall be measured as MWh at their output in which case $MP_{s,n}^{(EC)}=0$;
- where this is not possible, then either:
 - $C_{s,n}^{(k)}$ may be measured at the at the input to the switchgear in the primary distribution equipment or input to the supply transfer switch of the ICT site (points B in Figure 7) and $MP_{s,n}^{(EC)}=0,02$ (i.e. 2 % of additional penalty); or
 - where the generation is based on resource conversion, a conversion factor shall be applied to the resource consumed. In such cases the following values shall be applied:
 - diesel: 0,0099 MWh/l;

- gas: 0,0105 MWh/m³;
- hydrogen: 0,0389 MWh/kg;
- bioethanol: 0,006 MWh/l.

Thermal energy from local dedicated generating subsystems:

- consumption $C_{s,n}^{(k)}$ from heat distribution networks shall be measured as MWh at the network delivery point using a calorie counter/integrator according to CEN EN 1434 [1] series, where the distribution network is considered a closed loop;
- heat injection into cold distribution networks shall be measured as MWh at the network delivery point using a calorie counter/integrator according to CEN EN 1434 [1] series, where the distribution network is considered a closed loop. The electrical energy required to sink that thermal energy into the cold distribution network shall be allocated to $C_{s,n}^{(k)}$ by dividing the measured value by a conversion factor of 2,5 and $MP_{s,n}^{(EC)} = 0,08$ (i.e. 8 % of additional penalty);

NOTE: Corresponding to a reference installation using chillers with air condensing.

- where local heat generators would be used the heat consumption shall be measured as MWh at the generator output using a calorie counter/integrator according to CEN EN 1434 [1] series.

5.6.1.1.2 Measurement procedures

C for each ICT site is defined as the energy consumption recorded by all meters (utility, grid and local sources) over the specified time period used to assess KPI_{DCEM} (i.e. T_{KPI} subject to the allowed variation Δt specified in clause 5.5.1.4).

Measurements shall be made in MWh.

Electricity consumption measurements may be approximated by using regular power measurements.

5.6.1.2 Task effectiveness (KPI_{TE})

5.6.1.2.1 Measurement points

Measurement points for $C_n^{(k)}$ are specified in clause 5.6.1.1.1.

Where practicable, $L_n^{(k)}$ shall be the total of all measurements of energy consumption (MWh) measured at the socket(s) directly feeding the ICT equipment i.e. granularity Level 3 of ETSI EN 50600-2-2 [2] as shown in Figure 7 in which case $MP_{j,n}^{(TE)} = 0$.

Alternatively, $L_{j,n}^{(k)}$ may be measured at other points of measurement as follows:

- at the secondary distribution equipment shown in Figure 7 (also termed "departmental power distribution unit (PDU)" level) excluding (if any) feeds to non-ICT equipment loads, provided that the feeds of ICT equipment are separate from feeds to non-ICT equipment such as rack cooling systems;
- measurement may be made at the uninterruptible power supply (UPS) output provided that all the ICT equipment is fed by UPS and that the UPS only feeds such equipment.

The measurement of $L_n^{(k)}$ at the other points detailed above invokes a measurement penalty to reflect the additional waste heat in cabling between the measurement point and the ICT equipment as follows:

- for measurement at secondary distribution equipment shown in Figure 7: $MP_{j,n}^{(TE)} = 0,01$ (i.e. 1 % of additional penalty);
- for measurement at UPS output: $MP_{j,n}^{(TE)} = 0,02$ (i.e. 2 % of additional penalty).

5.6.1.2.2 Measurement procedures

C for each ICT site is defined as the energy consumption recorded by all meters (utility, grid and local sources) over the specified time period used to assess KPI_{DCEM} (i.e. T_{KPI} subject to the allowed variation Δt specified in clause 5.5.1.4).

Measurements shall be made in MWh.

Electricity consumption measurements may be approximated by using regular power measurements.

5.6.1.3 Task effectiveness (KPI_{TE})

5.6.1.3.1 Measurement points

Energy consumption should be made at the input to the power supply units of the ICT equipment. When this is not implemented, see ETSI EN 305 200-2-1 [i.13].

5.6.1.3.2 Measurement procedures

Measurement procedures for C are specified in clause 5.6.1.1.2.

L shall be measured over the specified time period used to assess KPI_{DCEM} (i.e. T_{KPI} subject to the allowed variation Δt specified in clause 5.5.1.4).

Measurements shall be made in MWh.

5.6.1.4 Energy re-use (KPI_{REUSE})

5.6.1.4.1 Measurement points

Measurement points for C are specified in clause 5.6.1.1.1.

Measurement points for EC_{REUSE} shall be nearest to the consumption points of re-used energy so as to take into account the losses in the distribution circuits.

When using a complex distribution circuit for energy re-use (e.g. several widespread consumers) it is possible to locate the measuring equipment at the ICT site output and then apply a mitigating factor to EC_{REUSE} to take into account the losses in the distribution circuit.

When no measurement procedure is available, calculation using established and recorded methods shall be used during the assessment period.

5.6.1.4.2 Measurement procedures

Measurement procedures for C are specified in clause 5.6.1.1.2.

EC_{REUSE} shall be measured over the specified time period used to assess KPI_{DCEM} (i.e. T_{KPI} subject to the allowed variation Δt specified in clause 5.5.1.4).

Measurements shall be made in MWh.

5.6.1.5 Renewable energy (KPI_{REN})

5.6.1.5.1 Measurement points

Measurement points for C and EC_{REN} are specified in clause 5.6.1.1.1.

5.6.1.5.2 Measurement procedures

Measurement procedures for C and EC_{REN} are specified in clause 5.6.1.1.2.

EC_{REN} shall be measured over the specified time period used to assess KPI_{DCEM} (i.e. T_{KPI} subject to the allowed variation Δt specified in clause 5.5.1.4).

Measurements shall be made in MWh.

5.7 Classifications

5.7.1 KPI_{EC} presented as DC_G

Within KPI_{DCEM} , DC_G is a banded representation of Objective KPI of energy consumption (KPI_{EC}) and is used to define the applicable weightings for W_{REUSE} and W_{REN} within the calculation of KPI_{EP} of clause 5.5.1.1.2.

Annex A provides details on the bands and weighting values employed by certain industry organizations. Other weightings may be used to meet specific objective needs provide that they fall within the above range and their application is in accordance with clause 5.5.1.5.1.

5.7.2 KPI_{EP} presented as DC_{CLASS}

KPI_{EP} values are classified within bands as designated as DC_{CLASS} .

Annex A provides details on the bands that may be applied to values of KPI_{EP} as employed by certain industry organizations. Other bandings may be used to meet specific objective needs provide that they fall within the above range and their application is in accordance with clause 5.5.1.5.1.

5.7.3 Application to groups of ICT sites

In accordance with clause 4.1.1, the KPI_{DCEM} may be applied to groups of ICT sites under common governance.

KPI_{DCEM} may be applied to sub-groups which are subject to common operating conditions. This allows the demonstration of the difference in performance resulting from sub-groups with different operating conditions.

5.8 Reporting

The following shall be reported for each ICT site, or group of ICT sites, for which KPI_{DCEM} is determined:

- KPI_{EC} ;
- DC_{CLASS} .

However, in order to automatically allow trend analysis to be implemented the following shall be reported:

- KPI_{EP} ;
- KPI_{TE} ;
- KPI_{REUSE} and W_{REUSE} ;
- KPI_{REN} and W_{REN} .

Annex A (informative): Weighting values

A.1 General

This annex provides details of the banding of DC_G and DC_{CLASS} and weighting values for W_{REUSE} and W_{REN} employed by certain industry organizations.

A.2 Industry organizations

A.2.1 CRIP

CRIP is a French group of ICT users working together in order to share experience. It represents now more than 300 major French industries and governmental organizations. CRIP uses a banding of DC_G as shown in Table A.1 and subsequent weightings of Table A.2.

Table A.1: DC_G bands used by CRIP

KPI_{EC} range	DC_G
$\leq 0,04$ GWh	XXS
$0,04$ GWh $< KPI_{EC} \leq 0,2$ GWh	XS
$0,2$ GWh $< KPI_{EC} \leq 1$ GWh	S
1 GWh $< KPI_{EC} \leq 5$ GWh	M
5 GWh $< KPI_{EC} \leq 25$ GWh	L
25 GWh $< KPI_{EC} \leq 120$ GWh	XL
> 120 GWh	XXL

Table A.2: Weighting values used by CRIP

DC_G	W_{REUSE}	W_{REN}
XXS	1,0	0,8
XS	1,0	0,8
S	1,0	0,8
M	1,0	0,8
L	1,0	0,8
XL	1,0	0,8
XXL	1,0	0,8

CRIP uses a banding of DC_{CLASS} as shown in Table A.3.

Table A.3: DC_{CLASS} bands used by CRIP

KPI_{EP} range	DC_{Class}
$\leq 1,00$	A
$1,00 < KPI_{EP} \leq 1,40$	B
$1,40 < KPI_{EP} \leq 1,70$	C
$1,70 < KPI_{EP} \leq 1,90$	D
$1,90 < KPI_{EP} \leq 2,10$	E
$2,10 < KPI_{EP} \leq 2,30$	F
$> 2,30$	G

A.2.2 eG4U

eG4U is an European Non-Governmental Organization of private and public ICT users (e.g. industries and cities). It proposes standards, KPIs and tools in order enforce at European level the sustainability in ICT energy management, ICT waste monitoring and ICT carbon footprint during all the whole life cycle of ICT resources.

eG4U uses a banding of DC_G as shown in Table A.4 and subsequent weightings of Table A.5.

Table A.4: DC_G bands used by eG4U

KPI_{EC} range	DC_G
$\leq 0,04$ GWh	XXS
$0,04$ GWh < $KPI_{EC} \leq 0,2$ GWh	XS
$0,2$ GWh < $KPI_{EC} \leq 1$ GWh	S
1 GWh < $KPI_{EC} \leq 5$ GWh	M
5 GWh < $KPI_{EC} \leq 25$ GWh	L
25 GWh < $KPI_{EC} \leq 120$ GWh	XL
> 120 GWh	XXL

Table A.5: Weighting values used by eG4U

DC_G	W_{REUSE}	W_{REN}
XXS	1,0	0,8
XS	1,0	0,8
S	1,0	0,8
M	1,0	0,8
L	1,0	0,8
XL	1,0	0,8
XXL	1,0	0,8

eG4U uses a banding of DC_{CLASS} as shown in Table A.6.

Table A.6: DC_{CLASS} bands used by eG4U

KPI_{EP} range	DC_{class}
$\leq 1,00$	A
$1,00 < KPI_{EP} \leq 1,40$	B
$1,40 < KPI_{EP} \leq 1,70$	C
$1,70 < KPI_{EP} \leq 1,90$	D
$1,90 < KPI_{EP} \leq 2,10$	E
$2,10 < KPI_{EP} \leq 2,30$	F
> 2,30	G

History

Document history		
V1.0.0	March 2017	ETSI ES 205 200-3 Rejected on MV 20170305
V1.1.0	November 2017	EN Approval Procedure AP 20180220: 2017-11-22 to 2018-02-20