

**Electromagnetic compatibility
and Radio spectrum Matters (ERM);
Technical characteristics and methods of measurement
for equipment for generation, transmission
and reception of Digital Selective Calling (DSC)
in the maritime MF, MF/HF and/or VHF mobile service;
Part 1: Common requirements**



Reference

REN/ERM-TG26-066-1

Keywords

DSC, GMDSS, maritime, radio**ETSI**

650 Route des Lucioles
F-06921 Sophia Antipolis Cedex - FRANCE

Tel.: +33 4 92 94 42 00 Fax: +33 4 93 65 47 16

Siret N° 348 623 562 00017 - NAF 742 C
Association à but non lucratif enregistrée à la
Sous-Préfecture de Grasse (06) N° 7803/88

Important notice

Individual copies of the present document can be downloaded from:

<http://www.etsi.org>

The present document may be made available in more than one electronic version or in print. In any case of existing or perceived difference in contents between such versions, the reference version is the Portable Document Format (PDF). In case of dispute, the reference shall be the printing on ETSI printers of the PDF version kept on a specific network drive within ETSI Secretariat.

Users of the present document should be aware that the document may be subject to revision or change of status. Information on the current status of this and other ETSI documents is available at

<http://portal.etsi.org/tb/status/status.asp>

If you find errors in the present document, please send your comment to one of the following services:

http://portal.etsi.org/chairecor/ETSI_support.asp

Copyright Notification

No part may be reproduced except as authorized by written permission.
The copyright and the foregoing restriction extend to reproduction in all media.

© European Telecommunications Standards Institute 2008.
All rights reserved.

DECTTM, PLUGTESTSTM, UMTSTM, TIPPHONTM, the TIPPHON logo and the ETSI logo are Trade Marks of ETSI registered for the benefit of its Members.

3GPPTM is a Trade Mark of ETSI registered for the benefit of its Members and of the 3GPP Organizational Partners.

Contents

Intellectual Property Rights	7
Foreword.....	7
1 Scope	8
2 References	8
2.1 Normative references	9
2.2 Informative references.....	9
3 Definitions and abbreviations.....	10
3.1 Definitions.....	10
3.2 Abbreviations	11
3.3 Naming convention of DSC message types	12
4 General requirements	12
4.1 General	12
4.2 Frequencies.....	12
4.3 Classes of emission	13
4.4 Accessibility	13
4.5 Calibration	13
4.6 Controls and indicators.....	13
4.6.1 General.....	13
4.6.2 Markings.....	14
4.7 Distress alert activation	14
4.8 Own MMSI	14
4.9 Group MMSI	14
4.10 Own position	14
4.11 Light sources	15
4.12 Operation.....	15
4.13 Routine testing.....	15
4.14 Safety precautions	15
4.14.1 Excessive current and voltage.....	15
4.14.2 Protection.....	15
4.14.3 Earthing	15
4.14.4 Access	16
4.15 Memory	16
4.16 Compass safe distance	16
4.17 Instructions	16
4.18 Warming-up period	16
4.18.1 Time.....	16
4.18.2 Heaters	16
4.18.3 Heating circuits	16
4.19 Selection of signal characteristics	17
4.20 Automatic/semi-automatic service	17
4.21 RF power used for DSC signalling.....	17
5 Test conditions	17
5.1 Test conditions, power sources, and ambient temperatures.....	17
5.1.1 Normal and extreme test conditions.....	17
5.1.2 Test power source	17
5.2 Normal test conditions.....	17
5.2.1 Normal temperature and humidity	17
5.2.2 Normal power sources	18
5.2.2.1 Battery power source.....	18
5.2.2.2 Other power sources.....	18
5.3 Extreme test conditions	18
5.3.1 Extreme temperatures	18
5.3.2 Extreme values of test power sources	18

5.3.2.1	Battery power source.....	18
5.3.2.2	Other power sources.....	18
5.3.3	Procedure for tests at extreme temperatures	18
6	RF test or baseband test of DSC equipment.....	18
6.1	RF test of integrated DSC equipment.....	18
6.1.1	SOLAS VHF class A/B	19
6.1.2	Non-SOLAS VHF class D	19
6.1.3	SOLAS MF/HF class A/B	19
6.1.4	Non-SOLAS MF/HF class E	19
6.2	Baseband test of non integrated DSC equipment	19
6.2.1	VHF Encoder.....	19
6.2.1.1	Frequency error	19
6.2.1.1.1	Definition.....	19
6.2.1.1.2	Method of measurements.....	19
6.2.1.1.3	Limits	19
6.2.1.2	Output voltage.....	19
6.2.1.2.1	Definition.....	19
6.2.1.2.2	Method of measurement	19
6.2.1.2.3	Limits	20
6.2.1.3	Bit stream speed	20
6.2.1.3.1	Definition.....	20
6.2.1.3.2	Method of measurement	20
6.2.1.3.3	Limits	20
6.2.1.4	Unwanted spectral components of the output signal	20
6.2.1.4.1	Definition.....	20
6.2.1.4.2	Method of measurement	20
6.2.1.4.3	Limits	20
6.2.1.5	Residual frequency modulation.....	21
6.2.1.5.1	Definition.....	21
6.2.1.5.2	Method of measurement	21
6.2.1.5.3	Limits	21
6.2.2	VHF DSC decoder	21
6.2.2.1	Dynamic range	21
6.2.2.1.1	Definition.....	21
6.2.2.1.2	Method of measurement	22
6.2.2.1.3	Limits	22
6.2.2.2	Noise immunity	22
6.2.2.2.1	Definition.....	22
6.2.2.2.2	Method of test.....	22
6.2.2.2.3	Limits	22
6.2.3	MF/HF DSC encoder.....	22
6.2.3.1	Frequency error	22
6.2.3.1.1	Definition.....	22
6.2.3.1.2	Method of measurement	23
6.2.3.1.3	Limits	23
6.2.3.2	Output voltage.....	23
6.2.3.2.1	Definition.....	23
6.2.3.2.2	Method of measurement	23
6.2.3.2.3	Limits	23
6.2.3.3	Bit stream speed	23
6.2.3.3.1	Definition.....	23
6.2.3.3.2	Method of measurement	23
6.2.3.3.3	Limits	23
6.2.3.4	Unwanted spectral components of the output signal	24
6.2.3.4.1	Definition.....	24
6.2.3.4.2	Method of measurement	24
6.2.3.4.3	Limits	24
6.2.3.5	Residual frequency modulation.....	24
6.2.3.5.1	Definition.....	24
6.2.3.5.2	Method of measurement	25
6.2.3.5.3	Limits	25

6.2.4	MF/HF DSC decoder	25
6.2.4.1	Interface for scanning	25
6.2.4.2	Scanning efficiency	25
6.2.4.2.1	Definition	25
6.2.4.2.2	Method of measurement	25
6.2.4.2.3	Limits	26
6.2.4.3	Dynamic range	26
6.2.4.3.1	Definition	26
6.2.4.3.2	Method of measurement	26
6.2.4.4	Noise Immunity	26
6.2.4.4.1	Definition	26
6.2.4.4.2	Method of test	26
6.2.4.4.3	Limits	26
7	Environmental tests	27
7.1	Environmental tests	27
7.1.1	Introduction	27
7.1.2	Procedure	27
7.1.3	Performance check	27
7.1.4	Vibration test (all classes)	28
7.1.4.1	Method of measurement	28
7.1.4.2	Requirement	28
7.1.5	Temperature tests	29
7.1.5.1	Dry heat for externally mounted equipment (all classes)	29
7.1.5.1.1	Method of measurement	29
7.1.5.1.2	Requirement	29
7.1.5.2	Damp heat cycle (all classes)	29
7.1.5.2.1	Method of measurement	29
7.1.5.2.2	Requirement	29
7.1.5.3	Low temperature cycle for externally mounted equipment (all classes)	29
7.1.5.3.1	Method of measurement	29
7.1.5.3.2	Requirement	30
7.1.6	Corrosion test (class A or B)	30
7.1.6.1	General	30
7.1.6.2	Method of measurement	30
7.1.6.3	Requirements	31
7.1.7	Rain test (externally mounted, class A or B)	31
7.1.7.1	General	31
7.1.7.2	Method of measurement	31
7.1.7.3	Requirements	31
8	Decoding and error correction	32
9	Interfaces	34
9.1	DSC signals input/output: analogue signals	34
9.2	DSC signals input/output: digital signals	34
9.3	Entry of information	34
9.4	Interfaces between DSC equipment and external circuits	35
9.4.1	Operational interfaces	35
9.4.2	Printer output	35
9.4.3	Other interfaces	35
10	Multiple operator positions	35
10.1	Priority	35
10.2	Alarms	35
10.3	Specific functionality	35
11	Multiple radio installations	36
12	Channel and frequency coding	36
12.1	Frequency information in DSC messages	36
13	Call set-up procedures	37

Annex A (normative):	DSC Message Detection and Decoding (normative)	39
Annex B (informative):	Bibliography	40
History		41

Intellectual Property Rights

IPRs essential or potentially essential to the present document may have been declared to ETSI. The information pertaining to these essential IPRs, if any, is publicly available for **ETSI members and non-members**, and can be found in ETSI SR 000 314: *"Intellectual Property Rights (IPRs); Essential, or potentially Essential, IPRs notified to ETSI in respect of ETSI standards"*, which is available from the ETSI Secretariat. Latest updates are available on the ETSI Web server (<http://webapp.etsi.org/IPR/home.asp>).

Pursuant to the ETSI IPR Policy, no investigation, including IPR searches, has been carried out by ETSI. No guarantee can be given as to the existence of other IPRs not referenced in ETSI SR 000 314 (or the updates on the ETSI Web server) which are, or may be, or may become, essential to the present document.

Foreword

This European Standard (Telecommunications series) has been produced by ETSI Technical Committee Electromagnetic compatibility and Radio spectrum Matters (ERM), and is now submitted for the Public Enquiry phase of the ETSI standards Two-step Approval Procedure.

The present document is part 1 of a multi-part deliverable covering Digital Selective Calling (DSC), as identified below:

Part 1: "Common requirements";

Part 2: "Class A/B DSC";

Part 3: "Class D DSC";

Part 4: "Class E DSC".

The present document covers the common requirements for all classes of DSC equipment. Operator interfaces and operating system details are class specific and will be found in the appropriate part.

Proposed national transposition dates	
Date of latest announcement of this EN (doa):	3 months after ETSI publication
Date of latest publication of new National Standard or endorsement of this EN (dop/e):	6 months after doa
Date of withdrawal of any conflicting National Standard (dow):	6 months after doa

1 Scope

The present document states the minimum requirements for equipment to be used for generation, transmission and reception of Digital Selective Calling (DSC) for use on board ships.

DSC may be used in the Medium Frequency (MF), High Frequency (HF) and Very High Frequency (VHF) Maritime Mobile Service (MMS), for distress, urgency and safety communication and general communications.

The present document is a multipart standard that covers the requirements to be fulfilled by:

- DSC equipment integrated with a transmitter and/or a receiver;
- DSC equipment not integrated with a transmitter and/or a receiver.

These requirements include the relevant provisions of the ITU Radio Regulations [3] and ITU-R Recommendations, the International Convention for the Safety Of Life At Sea (SOLAS) [1], and the relevant resolutions of the International Maritime Organization (IMO).

Equipment for generation, transmission and reception of DSC designed according to the following equipment classes:

- Class A - includes all the facilities defined in annex 1 of ITU-R Recommendation M.493-12 [4] and complies with the IMO Global Maritime Distress and Safety System (GMDSS) carriage requirements for MF/HF installations and/or VHF installations;
- Class B - provides minimum facilities for equipment on ships not required to use class A equipment and complies with the minimum IMO GMDSS carriage requirements for MF and/or VHF installations. This equipment should provide for:
 - alerting, acknowledgement and relay facilities for distress purposes;
 - calling and acknowledgement for general communication purposes; and
 - calling in connection with semi-automatic/automatic services, as defined in ITU-R Recommendation M.493-12 [4], annex 2, clause 3;
- Class D - provides minimum facilities for VHF DSC distress, urgency and safety as well as routine calling and reception as recommended by IMO MSC/Circ 803 [i.2] for non-SOLAS vessels participating in the GMDSS;
- Class E - provides minimum facilities for MF and/or HF DSC distress, urgency and safety as well as routine calling and reception as recommended by IMO MSC/Circ 803 [i.2] for non-SOLAS vessels participating in the GMDSS.

NOTE 1: Class A and Class B equipment may support the optional semi-automatic/automatic service in accordance with ITU-R Recommendations M.689 [6], M.1082 [7] and M.493-12 [4] tables 4.10.1 and 4.10.2 and are encouraged to do so.

NOTE 2: Class D and Class E equipment may also support the optional semi-automatic/automatic service.

2 References

References are either specific (identified by date of publication and/or edition number or version number) or non-specific.

- For a specific reference, subsequent revisions do not apply.
- Non-specific reference may be made only to a complete document or a part thereof and only in the following cases:
 - if it is accepted that it will be possible to use all future changes of the referenced document for the purposes of the referring document;
 - for informative references.

Referenced documents which are not found to be publicly available in the expected location might be found at <http://docbox.etsi.org/Reference>.

For online referenced documents, information sufficient to identify and locate the source shall be provided. Preferably, the primary source of the referenced document should be cited, in order to ensure traceability. Furthermore, the reference should, as far as possible, remain valid for the expected life of the document. The reference shall include the method of access to the referenced document and the full network address, with the same punctuation and use of upper case and lower case letters.

NOTE: While any hyperlinks included in this clause were valid at the time of publication ETSI cannot guarantee their long term validity.

2.1 Normative references

The following referenced documents are indispensable for the application of the present document. For dated references, only the edition cited applies. For non-specific references, the latest edition of the referenced document (including any amendments) applies.

- [1] International Convention for the Safety of Life at Sea (1974) as amended.
- [2] ISO Standard 3791: "Office machines and data processing equipment - Keyboard layouts for numeric applications".
- [3] ITU Radio Regulations (2008).
- [4] ITU-R Recommendation M.493-12 (2007): "Digital selective-calling system for use in the maritime mobile service".
- [5] ITU-R Recommendation M.541-9 (2004): "Operational procedures for the use of digital selective-calling (DSC) equipment in the maritime mobile service".
- [6] ITU-R Recommendation M.689-2 (1994): "Operational procedures for an international maritime VHF radiotelephone system with automatic facilities based on DSC signalling format".
- [7] ITU-R Recommendation M.1082-1 (1997): "International maritime MF/HF radiotelephone system with automatic facilities based on DSC signalling format".
- [8] ITU-T Recommendation V.11 (1996): "Electrical characteristics for balanced double-current interchange circuits operating at data signalling rates up to 10 Mbit/s".
- [9] IEC 61162-1 (2000): "Maritime navigation and radio communication equipment and systems - Digital interfaces - Part 1: Single talker and multiple listeners".
- [10] ITU-R recommendation M.1080 (1994): "Digital Selective Calling system enhancement for multiple equipment installations".

2.2 Informative references

The following referenced documents are not essential to the use of the present document but they assist the user with regard to a particular subject area. For non-specific references, the latest version of the referenced document (including any amendments) applies.

- [i.1] IEC 60529 ed. 2.1 (2001): "Degrees of protection provided by enclosures (IP Code)".
- [i.2] IMO Circular MSC/Circ-803: "Participation of non-SOLAS ships in the Global Maritime Distress and Safety System (GMDSS)".
- [i.3] ITU Report M.501: "Digital selective-calling systems for future operational requirements of the maritime mobile service".
- [i.4] ITU-T Recommendation E.161: "Arrangement of digits, letters and symbols on telephones and other devices that can be used for gaining access to a telephone network".

- [i.5] ITU-R Recommendation M.821-1 (1997): "Optional expansion of the digital selective-calling system for use in the maritime mobile service".
- [i.6] ETSI EN 301 925: "Electromagnetic compatibility and Radio spectrum Matters (ERM); Radiotelephone transmitters and receivers for the maritime mobile service operating in VHF bands; Technical characteristics and methods of measurement".
- [i.7] ETSI EN 301 033: "Electromagnetic compatibility and Radio spectrum Matters (ERM); Technical characteristics and methods of measurement for shipborne watchkeeping receivers for reception of Digital Selective Calling (DSC) in the maritime MF, MF/HF and VHF bands".
- [i.8] ETSI EN 301 025: "ElectroMagnetic Compatibility and Radio Spectrum Matters (ERM); Technical characteristics and methods of measurement for VHF radiotelephone equipment for general communications and associated equipment for Class "D" Digital Selective Calling (DSC)".
- [i.9] ETSI EN 300 373-1: "Electromagnetic compatibility and Radio spectrum Matters (ERM); Maritime mobile transmitters and receivers for use in the MF and HF bands; Part 1: Technical characteristics and methods of measurement".
- [i.10] ETSI EN 300 373-2: "Electromagnetic compatibility and Radio spectrum Matters (ERM); Maritime mobile transmitters and receivers for use in the MF and HF bands; Part 2: Harmonized EN covering essential requirements under article 3.2 of the R&TTE Directive".
- [i.11] ETSI EN 300 373-3: "Electromagnetic compatibility and Radio spectrum Matters (ERM); Maritime mobile transmitters and receivers for use in the MF and HF bands; Part 3: Harmonized EN covering essential requirements under article 3.3(e) of the R&TTE Directive".

3 Definitions and abbreviations

3.1 Definitions

For the purposes of the present document, the following terms and definitions apply:

B-state: condition when transmitting the higher of the two Digital Selective Calling (DSC) frequencies

critical error: set of information characters obtained from one or more received DSC messages is considered to have critical errors if the automated procedure needs information characters from that set in order to proceed or perform any task, but the required information characters are in error

EXAMPLE: An acknowledgement cannot be composed to an individual DSC message that has errors in the sender's MMSI).

distress alert: single DSC sentence containing the distress format character and the distress information

distress alert attempt: complete set of distress alerts used during the transmission stage

NOTE: Usually an attempt consists of 5 distress alerts sent without a break.

distress class call: special set of DSC messages that contain the distress information and whose frequency of subsequent communication is taken implicitly from the frequency on which the DSC message is sent

NOTE: They include the distress alert, distress relay, distress alert acknowledgement, and distress relay acknowledgement.

distress information: this string of DSC characters makes up the five pieces of information describing a distress event, and they are only found in distress class calls

NOTE: They consist of (in order) the Maritime Mobile Service Identity (MMSI) number of the vessel in distress, the nature of distress, the position of the vessel in distress, the time of that position, and the preferred means of subsequent communication.

distress relay: this call is a means of sending a "distress alert" from a vessel, which itself is not in distress, for a vessel that is in distress but unable to send its own distress or to relay distress information that has not otherwise been acknowledged as received

general class call: all the DSC messages that do not contain the distress information and in those cases where there are subsequent communications, the frequencies and/or channels of these communications are given explicitly in the message

NOTE: The set also includes all the special calls that don't involve subsequent communications such as the test call and position and polling request.

multi frequency alert attempts: use of consecutive transmissions on between two and six frequencies, of which one must include both the MF and HF 8 MHz band DSC distress and safety frequencies

standby: state of the operational unit when it is not in one of the procedures but is still able to receive DSC calls

valid MMSI: according to Radio Regulations Article 19, maritime mobile service identities are formed of a series of nine digits, consisting of three digits of the Maritime Identification Digits (MID) and six more digits

NOTE: These identities are included in the address and self-identification parts of the call sequence and are transmitted as five characters $C_5C_4C_3C_2C_1$, comprising the ten digits of:

$(X_1, X_2) (X_3, X_4) (X_5, X_6) (X_7, X_8)$ and (X_9, X_{10})

respectively, whereas digit X_{10} is always the figure 0 unless the equipment is also designed in accordance with ITU-R Recommendation M.1080 [10].

Y-state: condition when transmitting the lower of the two DSC frequencies

3.2 Abbreviations

For the purposes of the present document, the following abbreviations apply:

AIS	universal shipborne Automatic Identification System
BQ	requested acknowledgement
DSC	Digital Selective Calling
DX(n)	First transmission(s)
ECC	Error Check Character
EUT	Equipment Under Test
FM	Frequency Modulation
HF	High Frequency
GMDSS	Global Maritime Distress and Safety System
ID	Identification
IEC	International Electrotechnical Commission
IMO	International Maritime Organization
ISO	International Standardization Organization
ITU	International Telecommunications Union
ITU-R	ITU - Radiocommunications Sector
ITU-T	ITU - Telecommunications Sector
MF	Medium Frequency
MID	Maritime Identification Digits
MMS	Maritime Mobile Service
MMSI	Maritime Mobile Service Identity
NMEA	National Maritime Electronics Association
PM	Phase Modulation
RF	Radio Frequency
RQ	acknowledgement requested
Rx	Receive
RX(n)	Re-transmission(s)
SOLAS	Safety Of Life At Sea
SSB	Single Side Band
Tx	Transmit

UTC	Universal Time Co-ordinated
VHF	Very High Frequency

3.3 Naming convention of DSC message types

A naming convention is used that is based upon how the messages are handled in software or by the automated procedures. This approach organizes the DSC messages into two major sets; DSC messages that contain the distress information (distress DSC messages), and those that do not (non distress DSC messages).

Within the non distress DSC messages the operator generally has the option to specify the addressing mode or destination (format), the priority (category), the type of subsequent communication or activity (telecommand), and the frequency or channel (frequency message) parameters. Certain DSC messages require a fixed set of these parameter combinations and these DSC messages have been given the names test, position request, group, individual routine, medical transports, and neutral craft. The remaining DSC messages are denoted as "general" when necessary.

4 General requirements

4.1 General

The equipment shall comprise the necessary facilities for coding and transmission of DSC and for decoding and conversion of the information content of received DSC to visual form in plain language.

The language of the present document is necessarily detailed to clearly describe the internal operation of the equipment. The designer and/or manufacturer shall be aware that simple language or graphics shall be used in the user interface. This language shall be readily understood by the mariner required to carry this class of equipment. For instance, the interface shall use terms such as "OK" or "Cancel" instead of "terminate procedure", and "all ships" instead of "format 116", and "radio telephone" instead of "telecommand J3E", and use labels such as "Calling station 567555454" instead of "Sending non distress automated procedure".

The design and function of DSC equipment shall comply with the provisions of ITU-R Recommendation M.493-12 [4] and ITU-R Recommendation M.541-9 [5].

The equipment may be either:

- an independent unit for connection to an associated radiotelephone designed for maritime radio communication; or
- mechanically and electrically integrated in such radio equipment.

However in both cases the DSC equipment shall be capable of remotely switching the associated frequency (MF/HF) or channel (VHF) in the radio equipment.

4.2 Frequencies

For integrated equipment, the RF equipment shall be capable of operation on one or more of the following frequencies for distress, urgency and safety purposes:

- 2 187,5 kHz (MF);
- 4 207,5 kHz, 6 312 kHz, 8 414,5 kHz, 12 577 kHz and 16 804,5 kHz (HF);
- VHF channel 70 (156,525 MHz).

Such integrated equipment shall also be capable of operation on one or more of the following frequencies for routine call purposes:

- 2 177,0 kHz simplex (ship to ship MF);
- 2 177,0 kHz Rx/2 189,5 kHz Tx (ship to coast station MF);

- within the band 4 MHz to 27,5 MHz (HF), see ITU-R Recommendation M.541-9 [5], Annex 5;
- VHF channel 70 (156,525 MHz).

Additionally the equipment may be capable of operation on frequencies from the following bands as permitted by the ITU Radio Regulations [3]:

- 415 kHz to 526,5 kHz;
- 1 606,5 kHz to 4 000 kHz;
- 4 MHz to 27,5 MHz;
- 156 MHz to 174 MHz.

4.3 Classes of emission

Integrated equipment used for MF/HF transmission and/or reception shall provide for the following classes of emission:

- F1B Frequency Modulation (FM) with digital information, without a sub-carrier for automatic reception; or
- J2B Single SideBand (SSB) with digital information, with the use of a modulating sub-carrier, with the carrier suppressed to at least 40 dB below peak envelope power.

Integrated equipment used for VHF transmission and/or reception shall provide for the following class of emission:

- G2B Phase Modulation (PM) with digital information, with a sub-carrier for automatic reception.

4.4 Accessibility

All parts of the equipment which are subject to inspection and maintenance adjustments shall be easily accessible. Components shall be easily identifiable either by markings within the equipment, or with the aid of technical description.

4.5 Calibration

The equipment shall be so constructed that its main modules can easily be replaced and put into operation without elaborate calibration or re-adjustment.

4.6 Controls and indicators

4.6.1 General

The number of operational controls, their design and manner of functioning, location, arrangement and size should provide for simple, quick and efficient operation. The controls should be arranged in a manner which minimizes the risk of inadvertent activation.

Where a digital input panel with the digits "0" to "9" is provided, the digits shall be arranged to conform with ITU-T Recommendation E.161 [i.4]. However, where an alphanumeric keyboard layout is provided, the digits "0" to "9" may, alternatively, be arranged to conform with ISO Standard 3791 [2].

All operational controls shall be easy to be identified from the position at which the operator operates the equipment.

Controls which are not necessary for normal operation of the equipment shall not be readily accessible to the operator.

4.6.2 Markings

All controls, instruments, indicators and terminals shall be clearly marked. Details of the power supply from which the equipment is intended to operate shall be clearly indicated. The type designation of the equipment shall be marked on the equipment so as to be clearly visible.

4.7 Distress alert activation

A distress alert should be activated only by means of a dedicated distress button that has no other function other than activating distress alerts. This button should not be any key of a digital input panel or a keyboard provided on the equipment. This button shall only operate if an own MMSI (clause 4.8) is installed.

The distress button should be clearly identified and be protected against inadvertent operation with a spring loaded lid or cover.

This button shall be red in colour and marked "DISTRESS". Where a non-transparent protective lid or cover is used, it shall also be red and marked "DISTRESS".

It shall not be necessary for the user to remove seals or to break the lid or cover in order to operate the distress button.

The distress alert initiation should require at least two independent actions.

At all times it shall take a maximum of 5 seconds for lifting the spring loaded lid and continually pressing the dedicated distress button before a distress alert is transmitted. No other button or control on the equipment shall initiate a distress alert however it is composed.

The equipment shall indicate the status of the distress alert transmission.

The use of the dedicated distress button shall automatically have priority over any other operation of the equipment.

The button shall not be used for activating any other function or accessing any menu.

4.8 Own MMSI

The EUT shall have facilities for entering and storing its own 9-digit MMSI with the 10th digit set automatically to 0 in its use in any DSC message unless the equipment is designed to use the 10th digit in accordance with ITU-R recommendation M.1080 [10]. The factory default for the MMSI shall be some indicator to the equipment that it is invalid.

Once an own-MMSI is programmed, this number shall not be able to be edited by means of any of the user controls. Intervention by the manufacturer or authorized representative shall be required.

No DSC message shall be able to be sent or received without the proper entry of a valid own-MMSI since all DSC messages contain this number.

- If there is no valid own-MMSI entered, on power up the EUT shall sound a warning alarm and display the reason for the alarm and the means to silence it. The aural alarm may self terminate. Until an MMSI is entered, the EUT shall display at all times that "there is no MMSI entered, DSC is disabled, your distress button will not work" or equivalent.

4.9 Group MMSI

The equipment shall provide at least 20 user programmable group MMSIs to enable the equipment to recognize DSC messages addressed to either the ship's MMSI or the Group MMSIs.

4.10 Own position

To enable updating of position:

- 1) the EUT shall have facilities for manually entering the ship's position;

- 2) if position data is being updated automatically, an alarm shall sound if no updating is received after a period of 10 min that can only be silenced manually or by the reception of new position data, a displayed reminder or error message that the automatic position updating is "offline" shall remain until the position is updated;
- 3) if the ship's position is older than 4 h, an alarm shall sound that can only be silenced manually or by the reception or entry of new position data, a displayed reminder shall remain until the position is updated;
- 4) if the ships' position is older than 23,5 h, the position values shall be erased, an alarm shall sound that can only be silenced manually or by the reception or entry of new position data, a displayed reminder shall remain until the position is updated.

Where manual input is used and no enhanced position information is available then distress alert should not use the expansion message. See ITU-R Recommendation M.821 [i.5], clause 3.1. "The expansion message field with enhanced position resolution may be appended to any standard DSC transmission sequences which include position information, provided the data is available".

4.11 Light sources

If the equipment is provided with light sources for indication, illumination, etc., the equipment shall be provided with a control by which the light from such sources can be reduced either continuously or in steps to the point of extinction.

If extinguished - light shall be automatically restored to the lowest visible level if the equipment is engaged or any control is operated. Following this shall be possible to override manually.

However, warning and alarm indicators which are illuminated in the warning/alarm condition and indicators required for switching the equipment on or off, or resetting the equipment, or initiating a distress alert shall be clearly visible in all appropriate conditions of ambient illumination.

4.12 Operation

The equipment shall be so designed that misuse of the controls cannot cause damage to the equipment or injury to personnel.

For integrated equipment means shall be provided to interrupt the transmissions and to reset the equipment manually.

4.13 Routine testing

Means shall be provided to enable routine testing of the DSC unit without activating the associated radio transmitter. Typically this could be a DSC encode/decode loop test of a DSC call. Manufacturers shall declare the process employed and how any error codes, etc. displayed should be interpreted.

4.14 Safety precautions

4.14.1 Excessive current and voltage

Provision shall be made for protecting the equipment from the effects of excessive current or voltage and from excessive rise of temperature in any part of the equipment due to failure of the cooling system, if any.

4.14.2 Protection

Provision shall be made for protecting the equipment from damage if the power supply is subject to transient voltage changes and from damage due to the accidental reversal of the polarity of the power supply.

No connection of, or failure within, any external circuits shall disable the DSC equipment.

4.14.3 Earthing

Means shall be provided for earthing exposed metallic parts of the equipment.

4.14.4 Access

All parts and wiring in which direct or alternating voltages, or both, (other than RF voltages) combine to give a peak voltage greater than 50 V shall be protected against accidental access and shall be isolated automatically from all sources of electrical energy if the protective covers are removed.

Alternatively, the equipment shall be so constructed that access to such voltages can only be gained after having used a tool for this purpose (e.g. a spanner or screwdriver). In this case, warning labels shall be prominently displayed both within the equipment and on protective covers.

4.15 Memory

The information in programmable memory devices shall be protected from interruptions in the power supply of at least 10 hours duration.

Non volatile memory shall be used for the following:

- Own MMSI.
- Configuration data inherent to the DSC process.
- All DSC call logs.
- The fact the equipment is turned on.

Furthermore if the equipment was interrupted during an active sending distress automated procedure, the user shall be presented with the options to resume or cancel this procedure after power has been restored.

4.16 Compass safe distance

The compass safe distance to standard, and steering, magnetic compasses shall be stated on the equipment or in the manual.

4.17 Instructions

Adequately detailed operating instructions shall be provided with the equipment.

4.18 Warming-up period

4.18.1 Time

The equipment shall be operational and shall meet the requirements of the present document within one minute after switching on, except as provided in clause 4.15.2.

4.18.2 Heaters

If the equipment includes parts which require to be heated in order to operate correctly, e.g. crystal ovens, then any warming-up period required shall be clearly documented in the operating instructions of the equipment, after which time the requirements of the present document shall be met.

Such warming-up periods shall not exceed 30 minutes.

4.18.3 Heating circuits

Where clause 4.15.2 is applicable, the power supplies to the heating circuits shall be arranged so that they can remain operative when other supplies to the equipment, or within the equipment, are switched off. If a special switch for these circuits is provided on the equipment, the function of the switch shall be clearly indicated and the operating instructions

shall state that the circuit should normally be left connected to the supply voltage. A visual indication that power is connected to such circuits shall be provided on the front panel.

4.19 Selection of signal characteristics

Equipment constructed for DSC to be used on frequencies both in the MF/HF range and in the maritime VHF band shall automatically select the signal characteristics relevant to the frequency range concerned (see ITU-R Recommendation M.493-12 [4], annex 1, clauses 1.2 and 1.3).

4.20 Automatic/semi-automatic service

Equipment designed for use in an automatic/semi-automatic VHF radiotelephone service using DSC shall comply with the provisions of ITU-R Recommendation M.689-2 [6].

Equipment designed for use in an automatic/semi-automatic MF/HF radiotelephone service using DSC shall comply with the provisions of ITU-R Recommendation M.1082-1 [7].

4.21 RF power used for DSC signalling

Integrated equipment constructed for DSC to be used on frequencies both in the MF/HF range and in the maritime VHF band shall automatically select the maximum RF power relevant to the frequency range concerned. Otherwise, the DSC controller shall automatically set the RF power parameters of the FSI sentence to maximum.

5 Test conditions

5.1 Test conditions, power sources, and ambient temperatures

5.1.1 Normal and extreme test conditions

Conformance tests shall be made under normal test conditions and also, where stated, under extreme test conditions (see clauses 5.2 and 5.3 applied simultaneously).

5.1.2 Test power source

During conformance testing, the equipment shall be supplied from a test power source capable of producing normal and extreme test voltages as specified in clauses 5.2.2 and 5.3.2.

The internal impedance of the test power source shall be low enough for its effect on the test results to be negligible. For the purpose of testing, the power source voltage shall be measured at the input terminals of the equipment.

During testing, the power source voltages shall be maintained within a tolerance of ± 3 % relative to the voltage level at the beginning of each test.

5.2 Normal test conditions

5.2.1 Normal temperature and humidity

The normal temperature and humidity conditions for tests shall be a combination of temperature and humidity within the following ranges:

- temperature: +15 °C to +35 °C;
- relative humidity: 20 % to 75 %.

Where the relative humidity is less than 20 %, it shall be stated in the test report.

5.2.2 Normal power sources

5.2.2.1 Battery power source

Where the equipment is designed to operate from a battery, the normal test voltage shall be the nominal voltage of the battery (12 V, 24 V, etc.).

5.2.2.2 Other power sources

For operation from other power sources the normal test voltage shall be that declared by the manufacturer.

5.3 Extreme test conditions

Unless otherwise stated the extreme test conditions means that the EUT shall be tested at the upper temperature and at the upper limit of the supply voltage applied simultaneously, and at the lower temperature and the lower limit of the supply voltage applied simultaneously.

5.3.1 Extreme temperatures

For tests at extreme temperatures, measurements shall be made in accordance with clause 5.3.3, at a lower temperature of -15 °C and an upper temperature of +55 °C.

5.3.2 Extreme values of test power sources

5.3.2.1 Battery power source

Where the equipment is designed to operate from a battery, the extreme test voltages shall be 1,3 and 0,9 times the nominal voltage of the battery (12 V, 24, V, etc.).

5.3.2.2 Other power sources

For operation from other sources the extreme test voltages shall be those declared by the manufacturer.

5.3.3 Procedure for tests at extreme temperatures

The equipment shall be switched off during the temperature stabilizing periods.

Before conducting tests at the upper temperature, the equipment shall be placed in the test chamber and left until thermal equilibrium is reached. The equipment shall then be switched on in the high power transmit condition for at least 30 min. The equipment shall meet the requirements of the present document after this period.

For tests at the lower temperature, the equipment shall be left in the test chamber until thermal equilibrium is reached and shall then be switched to the standby or receive position for one minute, after which the equipment shall meet the requirements of the present document.

6 RF test or baseband test of DSC equipment

6.1 RF test of integrated DSC equipment

Integrated equipment is tested according to the test standards listed below.

6.1.1 SOLAS VHF class A/B

Tests are performed according to EN 301 925 [i.6] and EN 301 033 [i.7].

6.1.2 Non-SOLAS VHF class D

Tests are performed according to EN 301 025 [i.8].

6.1.3 SOLAS MF/HF class A/B

Tests are performed according to EN 300 373-1 [i.9] and EN 301 033 [i.7].

6.1.4 Non-SOLAS MF/HF class E

Tests are performed according to EN 300 373-2 [i.10] and EN 300 373-3 [i.11].

6.2 Baseband test of non integrated DSC equipment

6.2.1 VHF Encoder

6.2.1.1 Frequency error

6.2.1.1.1 Definition

The frequency error is the difference between the measured frequency and its nominal value.

6.2.1.1.2 Method of measurements

The measurement shall be carried out under normal test conditions and under extreme test conditions.

A non-reactive load of 600 Ω shall be connected to the output terminal of the equipment. The frequencies corresponding to the B-state and the Y-state (ITU-R Recommendation M.493 [4]) shall be measured on the output terminal. The encoder shall be set to generate continuous B or Y signal.

6.2.1.1.3 Limits

The measured frequency following after the warming up period (see clause 6.9) shall at any time for the B state be within ± 10 Hz relative to 1 700 Hz + 400 Hz and for the Y state be within ± 10 Hz relative to 1 700 Hz to 400 Hz.

6.2.1.2 Output voltage

6.2.1.2.1 Definition

The output voltage is the audio voltage measured across a non-reactive load of 600 Ω . For binary output, this voltage is the level of the "1" and the "0".

6.2.1.2.2 Method of measurement

A non-reactive load of 600 Ω shall be connected to the output terminal of the equipment.

The equipment shall be set to transmit continuous dot pattern, and the rms output voltage during the dot pattern shall be measured.

6.2.1.2.3 Limits

Analogue voltage

The output voltage shall be adjustable by at least ± 10 dB from 0,775 V (rms).

The output level of the two tones shall not vary by more than 0,5 dB during the transmission of an information block or control signal and each tone shall be within 0,5 dB relative to the other.

Binary voltage

The levels of the output voltage shall conform to ITU-T Recommendation V.11 [8].

6.2.1.3 Bit stream speed

6.2.1.3.1 Definition

The bit stream speed is the number of bit/s.

6.2.1.3.2 Method of measurement

The equipment shall be set to transmit a continuous dot pattern.

The output terminal of the equipment shall be connected to a linear FM demodulator. The output of the demodulator shall be limited in bandwidth by a low pass filter with a cut-off frequency of 1 kHz and a slope of 12 dB/octave.

The frequency of the dot pattern shall be measured.

6.2.1.3.3 Limits

The frequency shall be 600 Hz \pm 30 ppm corresponding to a bit stream speed of 1 200 baud.

6.2.1.4 Unwanted spectral components of the output signal

6.2.1.4.1 Definition

Unwanted spectral components are emissions on a frequency or frequencies which are outside the necessary bandwidth and the level of which may be reduced without affecting the corresponding transmission of information. Unwanted spectral components include harmonic spectral components and intermodulation products.

6.2.1.4.2 Method of measurement

The output terminals of the equipment shall be connected to a non-reactive load of 600 Ω .

The equipment shall be set to transmit a continuous dot pattern.

The unwanted spectral components in the output signal shall be determined.

6.2.1.4.3 Limits

The unwanted spectral components shall fulfill the requirement in figure 5, 0 dB refers to the registered mean power output level.

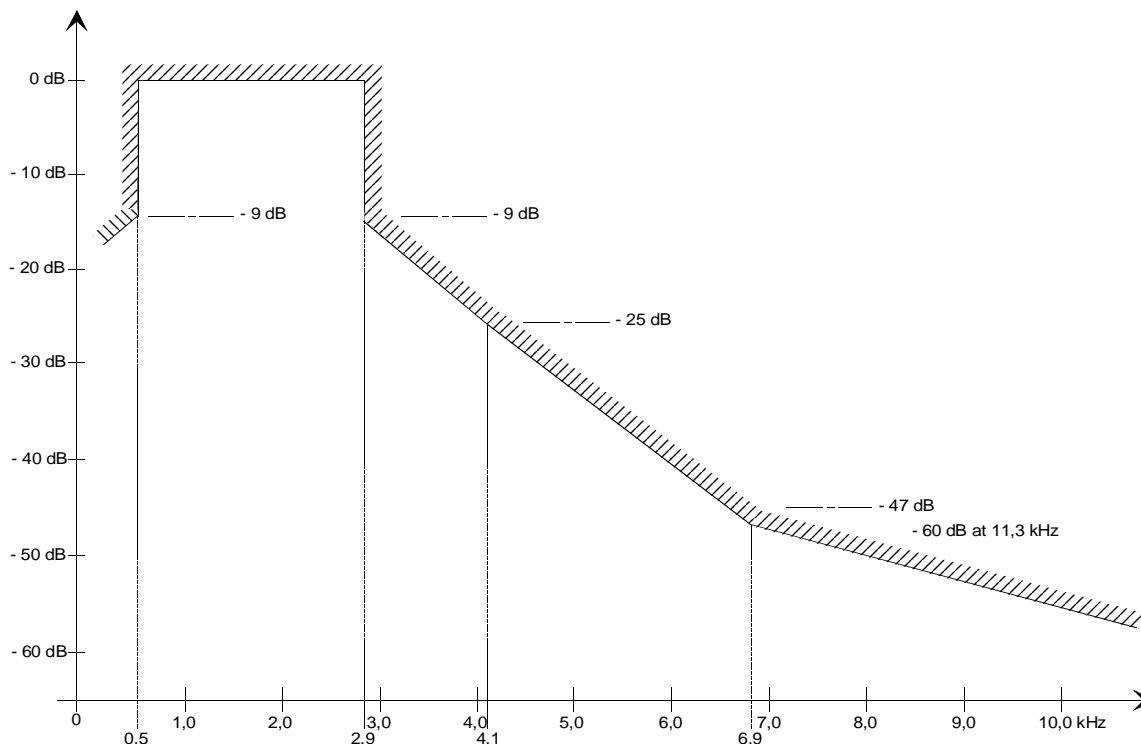


Figure 1: Unwanted spectral components/VHF DSC encoder)

6.2.1.5 Residual frequency modulation

6.2.1.5.1 Definition

The residual frequency modulation level is the ratio in dB between the noise power during the emission of a continuous B or Y signal and the output power while emitting continuous dot pattern.

6.2.1.5.2 Method of measurement

The output terminal of the equipment shall be terminated with a non-reactive load of $600\ \Omega$ and fed to a linear FM demodulator. The output of the demodulator shall be limited in bandwidth by a low-pass filter with a cut-off frequency of 3 kHz and a slope of 12 dB/octave.

The rms output levels shall be measured during emission of the B or Y signals and during the emission of a continuous dot pattern.

The ratio of the two rms output levels from the demodulator shall be determined.

DC voltages shall be suppressed by an ac coupling device so that they do not influence the results of the measurements.

6.2.1.5.3 Limits

The residual analogue frequency modulation ratio shall not be greater than -36 dB.

6.2.2 VHF DSC decoder

6.2.2.1 Dynamic range

6.2.2.1.1 Definition

The dynamic range of the equipment is the range from the minimum to the maximum audio frequency signal level at which a message shall be decoded without errors.

For a binary input the dynamic range is the differential input voltage necessary to assume correctly the intended binary state.

6.2.2.1.2 Method of measurement

Analogue voltage

Standard test signal no. 1 which shall be varied by ± 10 dB relative to 0,775 V rms shall be applied to the input terminal of the equipment.

If the equipment is provided with a pre-set control for adjustment to different analogue-frequency input levels, this shall be set to correspond to the input level for which the equipment is designed.

The centre frequency of the test signal shall during the test periodically be changed to a value ± 20 Hz relative to its nominal value.

Binary voltage

Standard test signal no. 2 which shall be varied over the entire common-mode voltage range of +7 V to -7 V with a differential input voltage of $\geq 2,0$ V shall be applied to the input terminals of the equipment.

The symbol error rate in the decoder output shall be determined as described in clause 6.4.

The measurements shall be carried out under normal test conditions and under extreme test conditions.

6.2.2.1.3 Limits

Within the stated voltage range the DSC messages shall be decoded without errors.

6.2.2.2 Noise immunity

6.2.2.2.1 Definition

The noise immunity of the decoder is the S/N relative to the nominal input voltage at which the decoder gives a symbol error rate $\leq 10^{-2}$.

6.2.2.2.2 Method of test

A noise generator at 600 Ω , 0 dBm, adjustable at least ± 20 dB and a bandwidth of 300 Hz to 3 000 Hz and a calibrated apparatus for generation and transmission of DSC messages, shall be connected through a suitable network simultaneously to the decoder input terminal.

The standard test signal no. 1 (clause 6.3.2) shall be applied to the decoder as applicable. The noise level shall be increased until the symbol error rate, determined as described in clause 6.4, is $> 10^{-2}$.

6.2.2.2.3 Limits

The sensitivity shall be less than or equal to 10 dB S/N.

6.2.3 MF/HF DSC encoder

6.2.3.1 Frequency error

6.2.3.1.1 Definition

The frequency error is the difference between the measured frequency and its nominal value.

6.2.3.1.2 Method of measurement

The measurement shall be carried out under normal test conditions and under extreme test conditions.

A non-reactive load of 600 Ω shall be connected to the output terminal of the equipment. The frequencies corresponding to the B state and the Y state (ITU-R Recommendation M.493 [4]) shall be measured on the output terminal. The encoder shall be set to generate continuous B or Y signal.

6.2.3.1.3 Limits

The measured frequency following after the warming up period (clause 4.7) shall at any time for the B state be within ± 1 Hz relative to 1 700 Hz + 85 Hz and for the Y state be within ± 1 Hz relative to 1 700 Hz to 85 Hz.

6.2.3.2 Output voltage

6.2.3.2.1 Definition

The output voltage is the audio voltage measured across a non-reactive load of 600 Ω . For binary output, this voltage is the level of the "1" and the "0".

6.2.3.2.2 Method of measurement

An appropriate load of 600 Ω as specified in clause 6.5.3 shall be connected to the output terminal of the equipment.

The equipment shall be set to transmit continuous dot pattern and the rms output voltage during the dot pattern shall be measured.

6.2.3.2.3 Limits

Analogue voltage

The output voltage shall be adjustable by at least ± 10 dB from 0,775 V (rms).

The output level of the two tones shall not vary by more than 0,5 dB during the transmission of an information block or control signal and each tone shall be within 0,5 dB relative to the other.

Binary voltage

The levels of the output voltage shall conform with ITU-T Recommendation V.11 [8].

6.2.3.3 Bit stream speed

6.2.3.3.1 Definition

The bit stream speed is the number of bit/s.

6.2.3.3.2 Method of measurement

The equipment shall be set to transmit a continuous dot pattern.

The output terminal of the equipment shall be connected to a linear FM demodulator. The output of the demodulator shall be limited in bandwidth by a low pass filter with a cut-off frequency of 1 kHz and a slope of 12 dB/octave.

The frequency of the dot pattern shall be measured.

6.2.3.3.3 Limits

The frequency shall be 50 Hz \pm 30 ppm corresponding to a bit stream speed of 100 bit/s.

6.2.3.4 Unwanted spectral components of the output signal

6.2.3.4.1 Definition

Unwanted spectral components are emissions on a frequency or frequencies which are outside the necessary bandwidth and the level of which may be reduced without affecting the corresponding transmission of information. Unwanted spectral components include harmonic spectral components and intermodulation products.

6.2.3.4.2 Method of measurement

The output terminals of the equipment shall be connected to a non-reactive load of 600 Ω .

The equipment shall be set to transmit continuous dot pattern. The unwanted spectral components in the output signal shall be determined.

6.2.3.4.3 Limits

The unwanted spectral components shall fulfill the requirement in figure 2, 0 dB refers to the registered mean power output level.

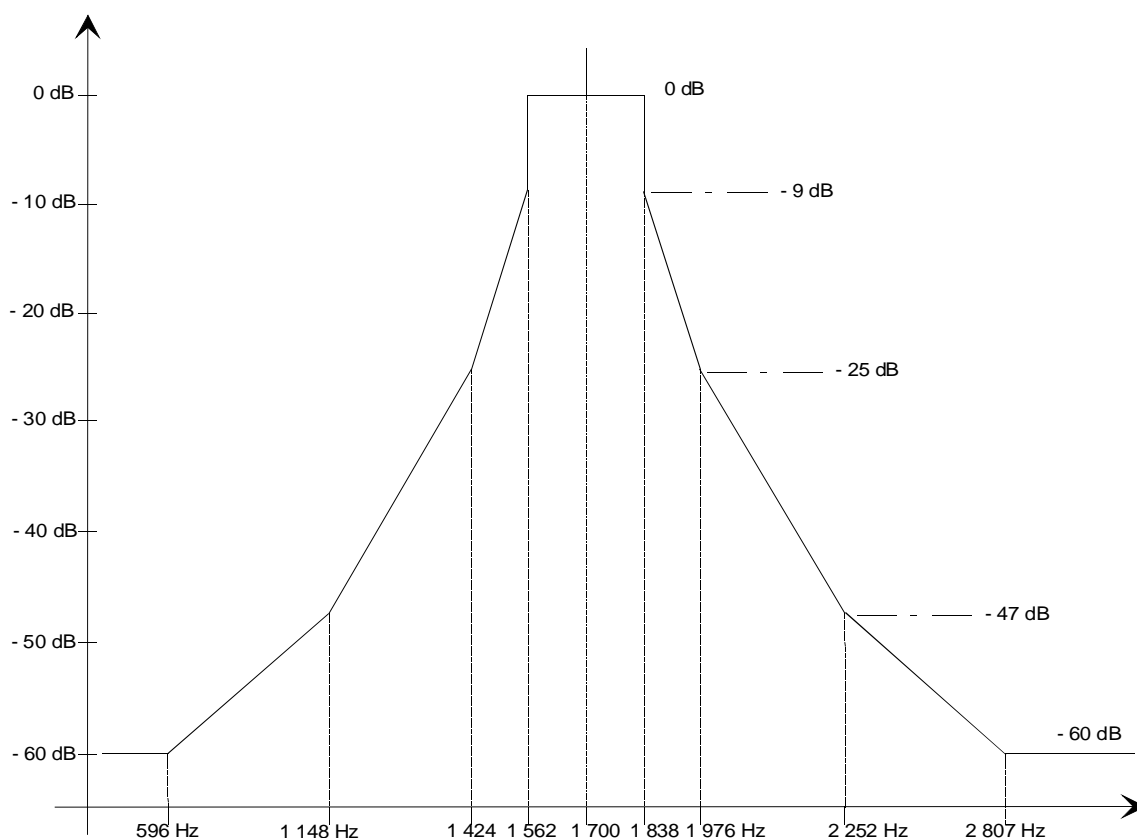


Figure 2: Unwanted spectral components (MF/HF DSC encoder)

6.2.3.5 Residual frequency modulation

6.2.3.5.1 Definition

The residual frequency modulation level is the ratio in dB between the noise power during the emission of a continuous B or Y signal and the output power while emitting continuous dot pattern.

6.2.3.5.2 Method of measurement

The output terminal of the equipment shall be terminated with a non-reactive load of $600\ \Omega$ and fed to a linear FM demodulator. The output of the demodulator shall be limited in bandwidth by a low-pass filter with a cut-off frequency of 1 kHz and a slope of 12 dB/octave.

The rms output level shall be measured during the emission of a continuous dot pattern and during the emission of a continuous B or Y signal.

The ratio of the two rms output levels from the demodulator shall be determined.

DC voltages shall be suppressed by an AC coupling device so that they do not influence the results of the measurements.

6.2.3.5.3 Limits

The residual frequency modulation ratio shall not be greater than -36 dB.

6.2.4 MF/HF DSC decoder

6.2.4.1 Interface for scanning

If the MF/HF DSC decoder is intended to be used with an MF/HF receiver for reception of digital selective calls with facilities for scanning six digital selective calling channels (clause 11.9), the decoder shall fulfill the following requirements:

- the decoder shall provide a suitable signal to stop the scanning process automatically only on detection of a 100 baud dot pattern of more than 20 bits length;
- means shall be provided at the MF/HF receiver to transmit information of the frequency or channel on which scanning has stopped using EN 61162-1 [9]. The frequency or channel shall be displayed or printed in relation to the DSC message received;
- the decoder shall provide a suitable signal to restart the scanning process after receipt of a DSC message or, during the reception of a DSC message which is not addressed to the ship, as soon as it is recognized as not being addressed to the ship;
- the stop signal shall be logic "0" and the start signal shall be logic "1" with levels complying with ITU-T Recommendation V.11 [8];
- the stop and restart signals may be substituted by direct frequency setting of the scanning receiver by the DSC equipment using EN 61162-1 [9].

6.2.4.2 Scanning efficiency

6.2.4.2.1 Definition

Scanning efficiency is the ability of the decoder to correctly identify DSC messages preceded by more than 20 bits of a 200 bit dot pattern ignoring all other signals and noise and generate suitable signals to control an associated scanning receiver.

6.2.4.2.2 Method of measurement

Two standard test signals no. 1 or no. 2 containing a series of DSC message sequences shall be applied alternately to the receiver at random time intervals.

One standard test signal shall be a single distress alert. The other standard test signal shall contain DSC messages with a 20 bit dot pattern.

The number of transmitted distress alerts shall be 200 and the symbol error rate shall be determined as described in clause 6.4.

6.2.4.2.3 Limits

The total number of received distress alerts shall be equal to or exceed 95 % of distress alerts transmitted and the symbol error rate shall be $\leq 10^{-2}$.

6.2.4.3 Dynamic range

6.2.4.3.1 Definition

The dynamic range of the decoder is the range from the minimum to the maximum audio frequency level at which a message shall be decoded without errors.

For a binary input the dynamic range is the differential input voltage necessary to assume correctly the intended binary state.

6.2.4.3.2 Method of measurement

Analogue voltage

Standard test signal no. 1 which shall be varied by ± 10 dB relative to 0,775 V rms shall be applied to the input terminal of the equipment.

If the equipment is provided with a pre-set control for adjustment to different audio frequency input levels, this shall be set to correspond to the input level for which the equipment is designed.

The center frequency of the test signal shall during the test periodically be changed to a value ± 20 Hz relative to its nominal value.

Binary voltage

Standard test signal no. 2 which shall be varied over the entire common-mode voltage range of +7 V to -7 V with a differential input voltage of $\geq 2,0$ V shall be applied to the input terminals of the equipment.

The symbol error rate in the decoder output shall be determined as described in clause 6.4.

The measurements shall be carried out under normal test conditions and under extreme test conditions.

Limits

Within the stated voltage range the DSC messages shall be decoded without errors.

6.2.4.4 Noise Immunity

6.2.4.4.1 Definition

The noise immunity of the decoder is the S/N relative to the nominal input voltage at which the decoder gives a symbol error rate 10^{-2} .

6.2.4.4.2 Method of test

A noise generator at 600 Ω , 0 dBm, adjustable at least ± 20 dB and a bandwidth of 1 550 Hz to 1 850 Hz for MF/HF and a calibrated apparatus for generation and transmission of DSC messages, shall be connected through a suitable network simultaneously to the decoder input terminal.

STS-1 or STS-4 shall be applied to the decoder as applicable. The noise level shall be increased until the symbol error rate, determined as described in clause 6.4, is $> 10^{-2}$.

6.2.4.4.3 Limits

The sensitivity shall be less than or equal to 10 dB S/N.

7 Environmental tests

7.1 Environmental tests

7.1.1 Introduction

The equipment shall be capable of continuous operation under the conditions of various sea states, vibration, humidity and change of temperature likely to be experienced on a ship in which it is installed. The applicable tests depend on the class of DSC and the intended installation position of the equipment as declared by the manufacturer.

7.1.2 Procedure

Environmental tests shall be carried out before tests of the same equipment in respect to the other requirements of the present document are performed.

Unless otherwise stated, the equipment shall be connected to an electrical power source only during the periods for which it is specified that electrical tests shall be carried out. These shall be done with normal test voltage.

7.1.3 Performance check

For the purpose of the present document, the term performance check shall be taken to mean:

- a) for receiver with decoder, a check of the calling sensitivity:
 - 1) calling sensitivity:
 - i) for MF/HF equipment, the receiver input terminal shall be connected to the artificial antenna specified in clause 5.5.2 and an RF signal at a nominal frequency of the receiver and modulated with standard test signal no. 1 containing DSC calls shall be applied. The level of the test signal shall be 6 dB μ V. The decoded symbol error rate shall be less than 10^{-2} ;
 - ii) for VHF equipment, the receiver input terminal shall be connected to the artificial antenna specified in clause 5.5.2 and an RF signal at the nominal frequency of channel 70 modulated with standard test signal no. 4 containing DSC calls shall be applied. The level of the test signal shall be 6 dB μ V. The decoded symbol error rate shall be less than 10^{-2} ;
- b) for separate decoder, a check of the correct decoding of DSC signals:
 - 1) decoding of DSC signals:
 - i) for both MF/HF and VHF decoders, the input terminals shall be connected to a calibrated apparatus for generation of DSC signals. The level of the signals shall be within +7 V and -7 V with a differential voltage of $\geq 2,0$ V for binary voltage and between ± 10 dB relative to 0,775 V rms for analogue signals. The decoded call sequences at the output of the decoders shall have correct technical format, including error-check character;
- c) for transmitter with encoder, a check of output power, frequency error and undesigned distress call:
 - 1) output power:
 - i) for MF/HF equipment, the method of measurement in clause 5.2.2 and the limits in clause 5.2.3 apply;
 - ii) for VHF equipment, the method of measurement in clause 6.3.2 apply. With the power switch set at maximum, the output power shall be between 6 W and 25 W;
 - 2) frequency error:
 - i) for MF/HF equipment, the method of measurement in clause 5.1.2 shall apply, with the measurement performed only for a continuous B or Y state. The relevant limit in clause 5.1.3 shall apply;

- ii) for VHF equipment, the method of measurement and the limit in clause 6.1 shall apply;
- 3) undesignated distress call:
 - i) both MF/HF and VHF equipment, standard test signal no. 1 modulated with an undesignated distress call. The signal shall be decoded without character errors;
- d) for separate encoder, a check of the output voltage, frequency error and undesignated distress call:
 - 1) output voltage:
 - i) for both MF/HF and VHF encoders, the method of measurement and relevant limit in clause 8.2 shall apply;
 - 2) frequency error:
 - i) for MF/HF encoder, the method of measurement in clause 8.1.2 shall apply, with the measurement performed only for continuous B or Y state. The relevant limit in clause 8.1.3 shall apply;
 - ii) for VHF encoder, the method of measurement in clause 8.1.2 shall apply, with the measurement performed only for a continuous B or Y state. The relevant limit in clause 8.1.3 shall apply;
 - 3) undesignated distress call:
 - i) for both MF/HF and VHF encoders, standard test signal no. 1 modulated with an undesignated distress call shall be applied. The signal shall be decoded without character errors.

7.1.4 Vibration test (all classes)

7.1.4.1 Method of measurement

The EUT, complete with any shock and vibration absorbers with which it is provided, shall be clamped to the vibration table by its normal means of support and in its normal attitude. Provision may be made to reduce or nullify any adverse effect on equipment performance which could be caused by the presence of an electromagnetic field due to the vibration unit.

The equipment shall be subjected to sinusoidal vertical vibration at all frequencies between:

- 5 Hz and 13,2 Hz with an excursion of $\pm 1 \text{ mm} \pm 10 \%$ (7 m/s^2 maximum acceleration at 13,2 Hz);
- 13,2 Hz and 100 Hz with a constant maximum acceleration of 7 m/s^2 .

The frequency sweep rate shall be slow enough to allow the detection of resonances in any part of the equipment.

A resonance search shall be carried out throughout the test. If any resonance of the equipment had $Q \geq 5$ measured relative to the base of the vibration table, the equipment shall be subjected to a further vibration endurance test at each resonant frequency at the vibration level specified in the test with a duration of 2 h. If resonances occur only with $Q < 5$, the further endurance test shall be carried out at one single observed resonant frequency. If no resonance occurs, the endurance test shall be carried out at a frequency of 30 Hz.

The performance check shall be carried out at the end of each 2 hour endurance test period.

The procedure shall be repeated with vibration in each of two mutually perpendicular directions in the horizontal plane.

After conducting the vibration tests, the equipment shall be inspected for any mechanical deterioration.

7.1.4.2 Requirement

The requirement for the performance check shall be met.

There shall be no harmful deterioration of the equipment visible to the naked eye.

7.1.5 Temperature tests

7.1.5.1 Dry heat for externally mounted equipment (all classes)

7.1.5.1.1 Method of measurement

The equipment shall be placed in a chamber of normal room temperature. For class A or B equipment the temperature shall be raised to and maintained at $+70\text{ }^{\circ}\text{C}$ ($\pm 3\text{ }^{\circ}\text{C}$) for a period of at least 10 hours.

After this period any climatic control device provided in the equipment may be switched on and the chamber cooled to $+55\text{ }^{\circ}\text{C}$ ($\pm 3\text{ }^{\circ}\text{C}$). The cooling of the chamber shall be completed within 30 minutes.

The equipment shall then be switched on and be subjected to a performance check.

The temperature of the chamber shall be maintained at $+55\text{ }^{\circ}\text{C}$ ($\pm 3\text{ }^{\circ}\text{C}$) during the performance check.

At the end of the test, and with the equipment still in the chamber, the chamber shall be brought to room temperature in not less than 1 hour. The equipment shall then be exposed to normal room temperature and humidity for not less than 3 hours before the next test is carried out.

7.1.5.1.2 Requirement

The requirement for the performance check shall be met.

7.1.5.2 Damp heat cycle (all classes)

7.1.5.2.1 Method of measurement

The equipment shall be placed in a chamber at normal room temperature and humidity which, steadily, over a period of 3 hours ($\pm 0,5$ hour), shall be heated from room temperature to $+40\text{ }^{\circ}\text{C}$ ($\pm 3\text{ }^{\circ}\text{C}$) and shall during this period be brought to a relative humidity of 93 % ($\pm 2\text{ }%$) so that excessive condensation is avoided.

These conditions shall be maintained for a period of at least 10 hours.

After this period, any climatic control devices provided within the equipment may be switched on.

30 minutes later the equipment shall be switched on, and shall then be kept working continuously for a period of 2 hours.

If the equipment being tested is, or includes, a transmitter, the transmitter shall be operated at the maximum power level and transmitting a distress signal in accordance with the procedures specified in ITU-R Recommendation M.541-9 [5].

The equipment shall be subjected to a performance check during the 2 hour period. The temperature and the relative humidity of the chamber shall be maintained at $+40\text{ }^{\circ}\text{C}$ ($\pm 3\text{ }^{\circ}\text{C}$) and 93 % ($\pm 2\text{ }%$) during the 2 hour 30 minute period.

At the end of the test, and with the equipment still in the chamber, the chamber shall be brought to room temperature in not less than 1 hour. The equipment shall then be exposed to normal room temperature and humidity for not less than 3 hours, or until moisture has dispersed, whichever is longer, before the next test is carried out.

7.1.5.2.2 Requirement

The requirement for the performance check shall be met.

7.1.5.3 Low temperature cycle for externally mounted equipment (all classes)

7.1.5.3.1 Method of measurement

The equipment shall be placed in a chamber at normal room temperature. Then the temperature shall be reduced to, and maintained at, $-30\text{ }^{\circ}\text{C}$ ($\pm 3\text{ }^{\circ}\text{C}$ for class A/B) or $-15\text{ }^{\circ}\text{C}$ ($\pm 3\text{ }^{\circ}\text{C}$ for class D) for a period of at least 10 hours.

Any climatic control devices provided in the equipment may then be switched on and the chamber warmed to -20 °C (± 3 °C for class A/B) or -15 °C (± 3 °C for class D). The warming of the chamber shall be completed within 30 minutes (± 5 minutes).

The temperature of the chamber shall then be maintained at -20 °C (± 3 °C for class A/B) or -15 °C (± 3 °C for class D) during a period of 1 hour 30 minutes.

The equipment shall be switched on and then subjected to a performance check during the last 30 minutes of the test. Any heat sources for the equipment may be switched on during the performance check.

At the end of the test, and with the equipment still in the chamber, the chamber shall be brought to room temperature in not less than 1 hour. The temperature shall then be exposed to normal room temperature for not less than 3 hours, or until moisture has dispersed, whichever is longer, before the next test is carried out.

7.1.5.3.2 Requirement

The requirement for the performance check shall be met.

7.1.6 Corrosion test (class A or B)

7.1.6.1 General

If sufficient evidence is provided by the applicant that the requirements of this clause are met then this test may be omitted.

7.1.6.2 Method of measurement

The equipment shall be placed in a chamber fitted with apparatus capable of spraying in the form of fine mist, such as would be produced by a spray gun, a salt solution to the following formula:

- sodium chloride 26,50 g \pm 10 %;
- magnesium chloride 2,50 g \pm 10 %;
- magnesium sulphate 3,30 g \pm 10 %;
- calcium chloride 1,10 g \pm 10 %;
- potassium chloride 0,73 g \pm 10 %;
- sodium bicarbonate 0,20 g \pm 10 %;
- sodium bromide 0,28 g \pm 10 %;
- distilled water to make the solution up to 1 litre.

Alternatively a 5 % sodium chloride (NaCl) solution may be used.

The salt used for the test shall be high quality sodium chloride (NaCl) containing, when dry, not more than 0,1 % sodium iodide and not more than 0,3 % of total impurities.

Salt solution concentration shall be 5 % (± 1 %) by weight.

The solution shall be prepared by dissolving 5 parts ± 1 by weight of salt in 95 parts by weight of distilled or demineralised water.

The pH value of the solution shall be between 6,5 and 7,2 at temperature of 20 °C (± 2 °C). The pH value shall be maintained within this range during conditioning; for this purpose, diluted hydrochloric acid or sodium hydroxide may be used to adjust the pH value, provided that the concentration of NaCl remains within the prescribed limits. The pH value shall be measured when preparing each new batch of solution.

The spraying apparatus shall be such that the products of corrosion cannot mix with the salt solution contained within the spray reservoir.

The equipment shall be sprayed simultaneously on all its external surfaces with the salt solution for a period of 1 hour.

This spraying shall be carried out 4 times with a storage period of 7 days at 40 °C (± 2 °C) after each spraying. The relative humidity during storage shall be maintained between 90 % and 95 %.

At the end of the total period the equipment shall be examined visually.

The equipment shall then be subjected to a performance check.

7.1.6.3 Requirements

There shall be no undue deterioration or corrosion of the metal parts, finishes, material or component parts visible to the naked eye.

In the case of hermetically sealed equipment there shall be no evidence of moisture penetration.

The requirement for the performance check shall be met.

7.1.7 Rain test (externally mounted, class A or B)

7.1.7.1 General

This test corresponds to IEC 60529 [i.1] table 2, first column, numeral 6: "Equipment protected against heavy seas".

The test shall only be performed for equipment to be externally mounted.

7.1.7.2 Method of measurement

The equipment shall be placed in an appropriate measurement chamber.

Throughout the test the equipment shall be working normally.

The test shall be carried out by spraying the equipment from all practicable directions with a stream of water from a hose.

The conditions to be observed are as follows:

- internal diameter of the nozzle: 12,5 mm;
- delivery rate: 100 l/min (± 5 %);
- water pressure at the nozzle: approximately 100 kPa (1 bar);
- test duration: 30 minutes;
- distance from the nozzle to the equipment surface: approximately 3 m.

The pressure shall be adjusted to achieve the specified delivery rate. At 100 kPa the water shall rise freely for a vertical distance of approximately 8 m above the nozzle.

At the end of the test the equipment shall be subjected to a performance check and inspected.

Following inspection, the equipment shall be resealed in accordance with the manufacturer's instructions.

7.1.7.3 Requirements

The requirements for the performance check shall be met.

There shall be no evidence of ingress of water visible to the naked eye.

8 Decoding and error correction

8.1 Reception of DSC messages

The dedicated HF watch receiver shall be set at the factory to scan all six distress, urgency and safety frequencies. If this setting can be changed by the operator a minimum of three frequencies shall be scanned. These shall include at least 2 MHz and 8 MHz,

For message detection and decoding:

- a) the DSC message detection and decoding shall follow the flowchart given in annex D;
- b) the receiver shall not require a dot pattern preceding the phasing sequence for correct bit phasing and unambiguous determination of the positions of the characters within a DSC message sequence;
- c) the decoder shall use word recognition for the purposes of word synchronization. (Word synchronization is the stage at which the decoder is able to recognize that the dot pattern has completed and the 10-bit words of the message have started);
- d) on MF/HF the decoder shall stop the scanning of the dedicated watch receiver only if the length of the dot pattern preamble is greater than 20;
- e) upon word synchronization, the decoder shall use the 3-bit zero count to check the 7-bit information content of all received words. The 7-bit symbol shall be considered received in error if the 3-bit zero count is incorrect;
- f) the decoder shall reject the message if the format symbol cannot be received in any of its four positions error free;
- g) the decoder shall reject the message if the error-free format symbol does not have a value allowed by ITU-R recommendation M.493 unless the equipment is specifically designed to handle other values;
- h) if the format symbol is either distress (112) or all ships (116), the message shall be rejected if the format symbol is not received correctly at least twice in either the DX or RX position;
- i) for those words that are sent duplicated in the five-word time diversity pattern, the symbol shall be considered received in error if both of the symbols are received in error or both are received error free and are not equal;
- j) the message shall be rejected if the format symbol is not distress (112) or all ships (116), and all five address symbols are not received correctly or if the address indicates that it is not for this station (it does not contain the station MMSI or group MMSI or the station is not in the specified geographic area);
- k) the equipment shall compute a local ECC if a set of received information symbols can be obtained error-free;
- l) if the DSC message is a distress alert, the equipment shall follow the decoding techniques for each individual message and successively attempt to correct any information characters received in error in previous messages with the corresponding correctly received characters in the latest message;
- m) the decoder shall recognize the end of sequence pattern as the termination of a standard DSC message, regardless of what follows, and shall be able to decode the standard part of the message;
- n) equipment that supports the ITU-R recommendation M.821 [i.5] extensions shall be able to decode the standard part of the DSC message even when the extension is received in error;
- o) if one of the four end of sequence symbols is not received error free at the end of the standard DSC message the message shall be rejected. However, if the end of sequence character is received correctly at the end of the enhanced extension the equipment shall not be prevented from using the latter end of sequence symbol to identify and accept the standard (and thus entire) message.

8.2 Error handling in the automated procedures

8.2.1 General

This clause describes the handling of received DSC messages that contain errors in any of the information characters except the format, address (the destination MMSI, group MMSI or area), and end of sequence characters which shall be received correctly in order for the message to be accepted.

NOTE: For the purposes of these tests "performing comparison error correction" between identical sets of information characters means that if one of a corresponding pair of information characters is in error, the information character in error is replaced by the information character that is not in error. A given information character is received in the DX and RX positions of the DSC message from which a final set of information characters is determined.

A DSC message shall initiate or be handled by an automated procedure if the format test passes, the destination address, and end of sequence information characters are able to be determined error free.

If an automated procedure is initiated by the reception of a DSC message that contains critical errors, the aural alarm shall self terminate.

When an automated procedure initiated with critical errors first receives a subsequent message without critical errors or the procedure is first able to correct the critical errors by combining received messages, the normal initiating alarm shall sound.

A received DSC message shall be considered pertinent to an automated procedure if the received information characters are identical to the set of information characters normally used to identify pertinence.

In no case shall the reception of an identical DSC message introduce more errors into the information characters (and their display) that are used to identify the procedure.

Automated procedures shall indicate all displayed information characters that are in error. Individual elements of any MMSIs and any position information that are in error shall be indicated by a special symbol (manufacturer defined) at the place of the error.

8.2.2 Distress automated procedures

A DSC message with errors in the ECC or information characters is considered a non distress DSC message by an automated procedure unless:

- a) the format character is distress (112) which makes the message a distress alert; or
- b) the format character is all ships and the number of information characters excluding the enhanced position extension is 23; or
- c) the format character is area, group, or individual and the number of information characters excluding the enhanced position extension is 28 which makes the message a relay; and
- d) if (b) is true and the telecommand 1 parameter is received in error and the end of sequence character is no acknowledgement requested, the DSC message shall be assumed to be a relay (it could be a distress alert acknowledgment) and an error in DSC message type shall be indicated.

A distress procedure handling an individually addressed distress relay shall not allow the sending of the acknowledgment if any one of the digits in the sender MMSI is in error.

Received distress automated procedures shall not allow the sending of any further distress DSC messages as long as any one of the current distress information characters remains in error. In that case the automated procedure shall only offer the operator the option of composing and sending a distress relay on behalf of someone else (the operator is then free to enter a best estimate of what the distress information shall be based upon the received distress information).

A distress automated procedure shall assume radio telephone if the communications parameter is received in error. The distress automated procedure shall indicate to the operator that it is making the assumption due to the error.

For a distress automated procedure to be considered acknowledged by a received distress DSC acknowledgment:

- a) the MMSI (or unknown) of the vessel in distress shall be received error free;
- b) if the acknowledgment is on MF/HF, the distress communications parameter shall also be received error free;
- c) if the MMSI of the vessel in distress is unknown, all the parameters of the distress information shall also be received error free.

A distress automated procedure shall correct receive errors by performing comparison error correction in the following manner:

- a) if the entire set of received information characters is identical to the previously received set of information characters, comparison error correction shall be performed on the entire set of information characters;
- b) if only the set of received distress information characters is identical to the distress information determined from the reception of previous DSC messages, comparison error correction shall only be performed on the set of distress information characters;
- c) if the new message has the enhanced position information characters comparison error correction shall be performed on the enhanced position information characters, and if the enhanced position information characters are absent in the current set of distress information characters, the current set shall be updated with the new set of enhanced position information characters;
- d) if only the received distress event information characters are identical, comparison error correction shall only be performed on the distress event information characters.

8.2.3 Non distress automated procedures

A non distress automated procedure shall not tune to the frequencies of subsequent communication if the DSC message is addressed to a group, an area or all ships if the telecommand 1 (MF/HF only) and/or frequency information characters are received in error.

A non distress automated procedure shall not allow the acknowledgment of a non distress DSC message that has errors in either the category, sender MMSI, or telecommand 1 information characters.

A non distress automated procedure shall not be acknowledged by a non distress DSC acknowledgement that has errors in any one of the sender MMSI, telecommand 1, or frequency information characters.

9 Interfaces

9.1 DSC signals input/output: analogue signals

If the equipment is designed as an independent DSC unit for connection to the audio frequency terminals of external radio equipment, the input and output impedances shall be 600 Ω free of earth.

9.2 DSC signals input/output: digital signals

If the equipment is designed as an independent DSC unit, with binary inputs and outputs for DSC, the logic level shall comply with ITU-T Recommendation V.11 [8].

9.3 Entry of information

Means shall be provided for manual entry of the geographical position information and of the time when this position information was valid. In addition, facilities for automatic entry and encoding of the geographical position, geographical area and time information (UTC) shall be provided. Such facilities shall conform with IEC 61162-1 [9].

As a minimum the equipment shall recognize the following sentences : GLL, GGA, RMC and GNS.

9.4 Interfaces between DSC equipment and external circuits

9.4.1 Operational interfaces

The equipment may also be provided with additional suitable interfaces. These may include the following:

- the control of any external transmitter and receiver associated with the DSC operation;
- the control of scanning receivers.

For independent units such interfaces, if provided, shall comply with IEC 61162-1 [9].

9.4.2 Printer output

The decoding part of the equipment may be provided with a printer or an output terminal for connecting an external printer. The electrical characteristics of the output shall be an industry standard printer type interface.

9.4.3 Other interfaces

The equipment may, in addition to the standardized interfaces, be provided with interfaces for the same functions, offering other electrical characteristics.

10 Multiple operator positions

10.1 Priority

If the equipment can be operated from more than one position, the control unit provided at the position from where the ship is normally navigated shall be considered as the priority controller. Individual control units shall be provided with an indicator showing whether the equipment is in operation.

10.2 Alarms

Any audible or visual alarm shall be relayed to all controllers.

10.3 Specific functionality

It shall not be possible for any controller to interrupt any DSC signalling that is in progress.

Any non-priority controller that can initiate DSC signalling shall have the full functionality as required for that class of DSC in the appropriate part of this multipart standard.

However, if a distress alert is initiated by any controller:

- it will take immediate priority over any current operation or call;
- no controller will be considered as the priority controller after a distress alert has been initiated;
- priority shall be re-established manually after any distress situation is completed.

11 Multiple radio installations

This is for equipment that is designed to use the 10th digit of the DSC address in accordance with recommendation ITU-R Recommendation M.1080 [10].

DSC controllers that have a non-zero 10th digit in the address shall have restricted DSC functionality as follows:

- all automatic acknowledgements shall be disabled if the 10th digit is ignored in decoding.

12 Channel and frequency coding

12.1 Frequency information in DSC messages

For MF/HF both the Rx and Tx frequencies will be transmitted especially as there are occasions where split channel operation may be used.

If only 1 data field is received then the DSC decoder will assume that this is the ship Rx frequency of a standard ITU channel pair.

For VHF operation only 1 data field is required to be transmitted. The first frequency element will contain the information. If both data fields are received in a message then the radio will ignore the second one.

Unused frequency elements shall be filled with "no information" (126).

EXAMPLE 1:

Transmitted and received frequency information:

- 1st frequency element is E1.
- 2nd frequency element is E2.

E1 C3		E1 C2		E1 C1		E2 C3		E2 C2		E2 C1		Note
9	0	0	0	2	0	126		126		126		A
9	0	1	0	0	2	126		126		126		B
9	0	2	0	8	2	126		126		126		C
0	4	3	6	1	4	0	4	0	6	9	4	D
1	3	1	6	5	4	1	2	3	1	8	4	E
2	2	7	1	2	4	2	2	0	1	6	4	F
1	3	1	6	5	4	126		126		126		G

Notes to table for transmitted and received frequency information:

- A VHF CH:20 157,000 Tx/161,600 Rx.
- B VHF CH:1 002 156,100 simplex.
- C VHF CH:2 082 161,725 simplex.
- D HF Channel 402 4 069,4 Tx/4 361,4 Rx.
- E HF Channel 1 230 12 318,4 Tx/13 165,4 Rx.
- F HF Channel 2 206 22 016,4 Tx/22 712,4 Rx.
- G HF Broadcast call on 13 165,4 kHz Simplex.

Calls addressed to coast stations shall always use six 126 (no information) characters for the frequency information.

EXAMPLE 2:

Decoding frequency information

E1 C3		E1 C2		E1 C1		E2 C3		E2 C2		E2 C1		Note
9	0	0	0	2	0	Ignore						G
9	0	1	0	0	2	Ignore						H
9	0	2	0	8	2	Ignore						I
3	0	0	4	0	2	3	0	0	4	0	2	J
3	0	1	2	3	0	126		126		126		K
3	0	2	2	0	6	3	0	2	2	0	6	L

Notes to table for decoding frequency information:

G VHF CH:20 157,000 Tx/161,600 Rx.

H VHF CH:1 002 156,100 simplex.

I VHF CH:2 082 161,725 simplex.

J HF Channel 402 4 069,4 Tx/4 361,4 Rx (for reverse compatibility purposes).

K HF Channel 1 230 12 318,4 Tx/13 165,4 Rx (for reverse compatibility purposes).

L HF Channel 2 206 22 016,4 Tx/22 712,4 Rx (for reverse compatibility purposes).

The 10 nm and 20 nm VHF channels shall not be selectable from the user interface (DIAL, etc.). These channels are only available when proposed by a coast station as part of a DSC call.

13 Call set-up procedures

For the specific case of individual calls to a ship station there is almost always uncertainty about whether the called party is within RF range. The following call set-up procedure will give a more efficient use of the RF channel as well as more confidence in call completion.

On selecting an individual call (routine) to non coast station MMSI the DSC controller will:

- i. send a polling call to the called party MMSI;
- ii. as soon as the calling party receives an acknowledgement to the polling call then the calling party will automatically send the individual call request;
- iii. on MF/HF the polling call may be repeated once if no acknowledgement has been received during the specified waiting time (see note);
- iv. if the calling party does not receive an acknowledgement to the polling call during the specified waiting time, the equipment shall indicate that called party may not be in range and that an unconfirmed call can be attempted. If the operator responds "ok" then the individual call is placed;
- v. the waiting times are:
 - VHF: 5 seconds;
 - MF/HF: 25 seconds.

Polling calls should be automatically acknowledged by ships stations.

For the called party the call set-up procedure is as follows:

- i. on receipt of a polling call it should be acknowledged as quickly as the RF channel permits. No alarm is activated on the reception of a polling call;
- ii. receipt of an individual call should cause an appropriate alarm and a display of the calling party MMSI and the proposed working channel;
- iii. if the proposed working channel is not programmed or not available in the equipment the called party shall automatically send an unable to comply acknowledgement (incompatible working channel);
- iv. otherwise when the operator responds "ok" to accept the individual call, the called party terminal will then send an able to comply acknowledgement and then switch to the proposed working channel;

NOTE: The probability of a single DSC transmission on MF/HF being received error-free by a particular receiving station will, in general, be lower than at VHF (typically 60 % on HF; 95 % on MF (day); 100 % on VHF as given in ITU-R Recommendation M.501 [i.3]).

Annex A (normative): DSC Message Detection and Decoding (normative)

Figure A.1 shows a schematic of the various tests and error checks that are required before the message is accepted. The "bit detector" is the output of the DSC modem and provides the source of the 0 and 1 bitstream computed from the received signal. A DSC "word" consists of 10 bits, a 7-bit "symbol" and a 3-bit "number of zeros in the symbol" or "zero-count" value.

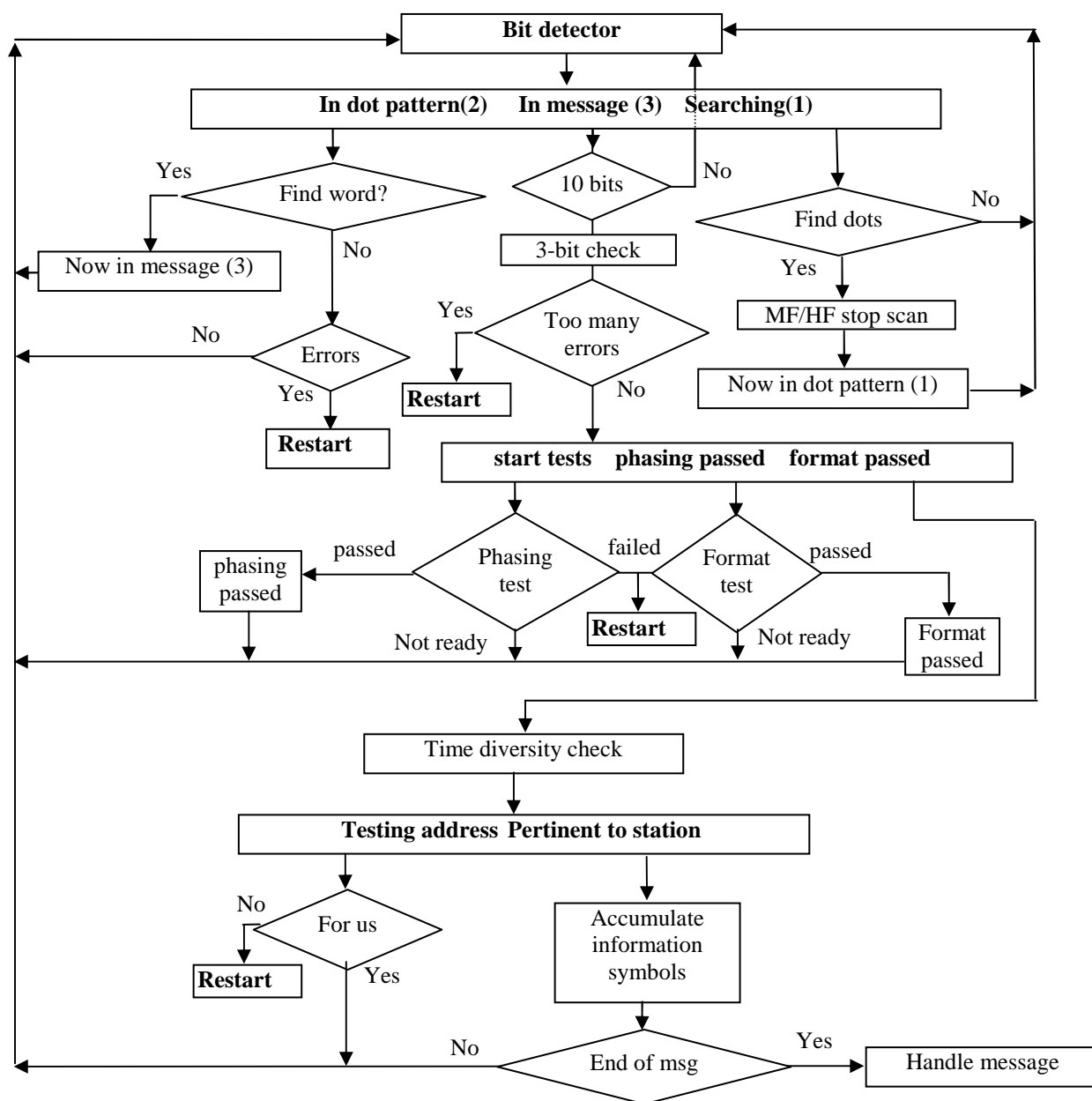


Figure A.1: Tests and error checks

Annex B (informative): Bibliography

- ITU-R Recommendation SM.332-4 (1978): "Selectivity of receivers".
- Commission Decision 2004/71/EC of 4 September 2003 on essential requirements relating to marine radio communication equipment which is intended to be used on non-SOLAS vessels and to participate in the Global Maritime Distress and Safety System (GMDSS).

History

Document history		
Edition 1	November 1995	Publication as ETS 300 338
V1.2.1	April 1999	Publication as EN 300 338
V1.3.1	December 2008	Public Enquiry PE 20090405: 2008-12-06 to 2009-04-06