



The Standards People



oneM2M Partnership Project

Presented by: **Gavin Craik**

For: **ETSI Seminar**

About oneM2M

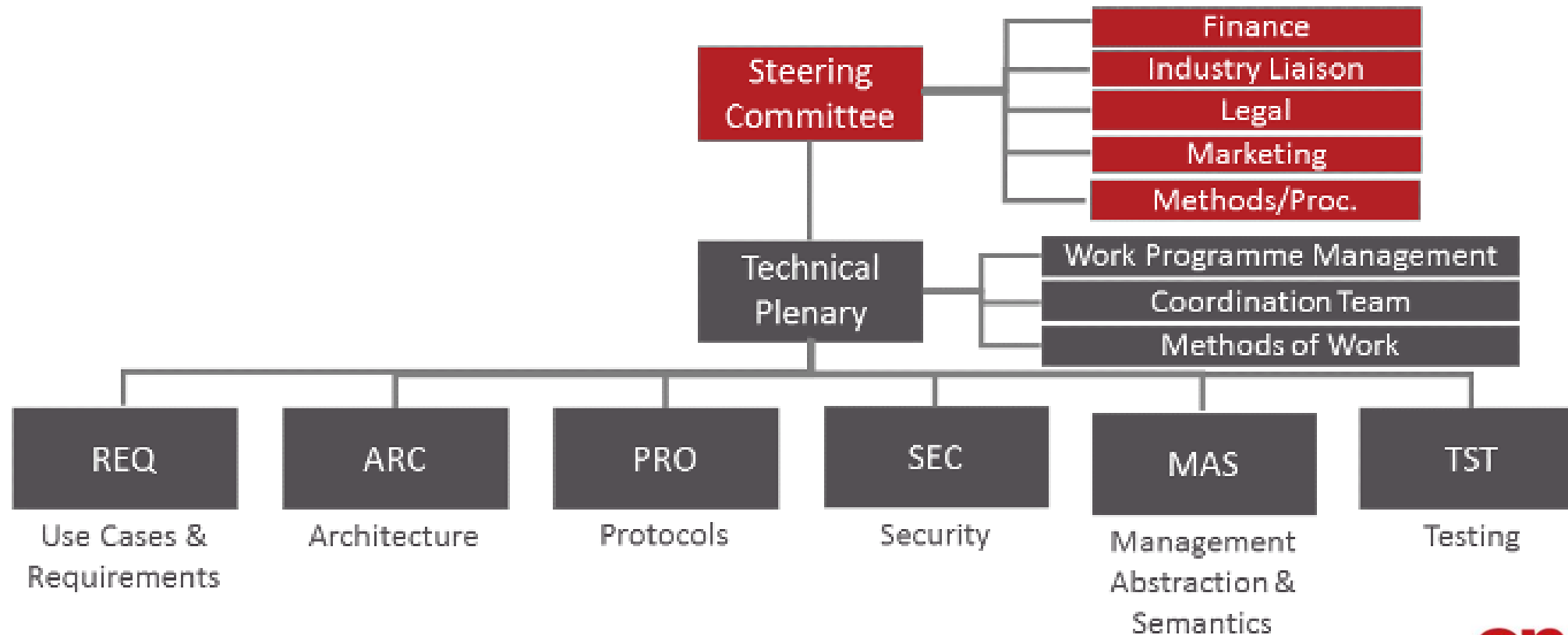
ETSI is a founding partner in oneM2M

- ✓ Along with ARIB, ATIS, CCSA, TTA, TTC (Type 1 partners)
- ✓ Organized along the lines of 3GPP

To develop a common M2M Service Layer that can be readily embedded within various hardware and software, and relied upon to connect the myriad of devices in the field with M2M application servers worldwide.

- ✓ First meeting September 2012
- ✓ 250 active member organizations
- ✓ Release 1: January 2015, update January 2016.
- ✓ Release 2: August 2016, Release 2A: March 2018
- ✓ Release 3: September 2018
- ✓ Release 4: work started

oneM2M structure



Access to oneM2M

All members of Type-1 partners may join as oneM2M members

ETSI members must request to join oneM2M

✉ <mailto:Karen.hughes@etsi.org>

✉ No extra charges to join or participate

All oneM2M documents openly available

✉ <ftp://ftp.onem2m.org>

Basic information on oneM2M website

✉ www.onem2m.org

oneM2M Portal (<http://member.onem2m.org>) has document management, e-mail lists, membership list etc.

✉ Requires oneM2M membership and username/password

Decision making in oneM2M TP

Consensus is preferred

✓ No voting at WG level

Same attendance requirement as in 3GPP to be on voting list

✓ 1 member (per Partner Type 1) - 1 vote

✓ Partners Type 2 have 1 vote each

✓ Quorum of 50% for physical voting

✓ Threshold of 71% for decision

Vote by correspondence: to vote, must be on voting list in meeting which initiated vote