



The Standards People



# ETSI Governance and Decision Making

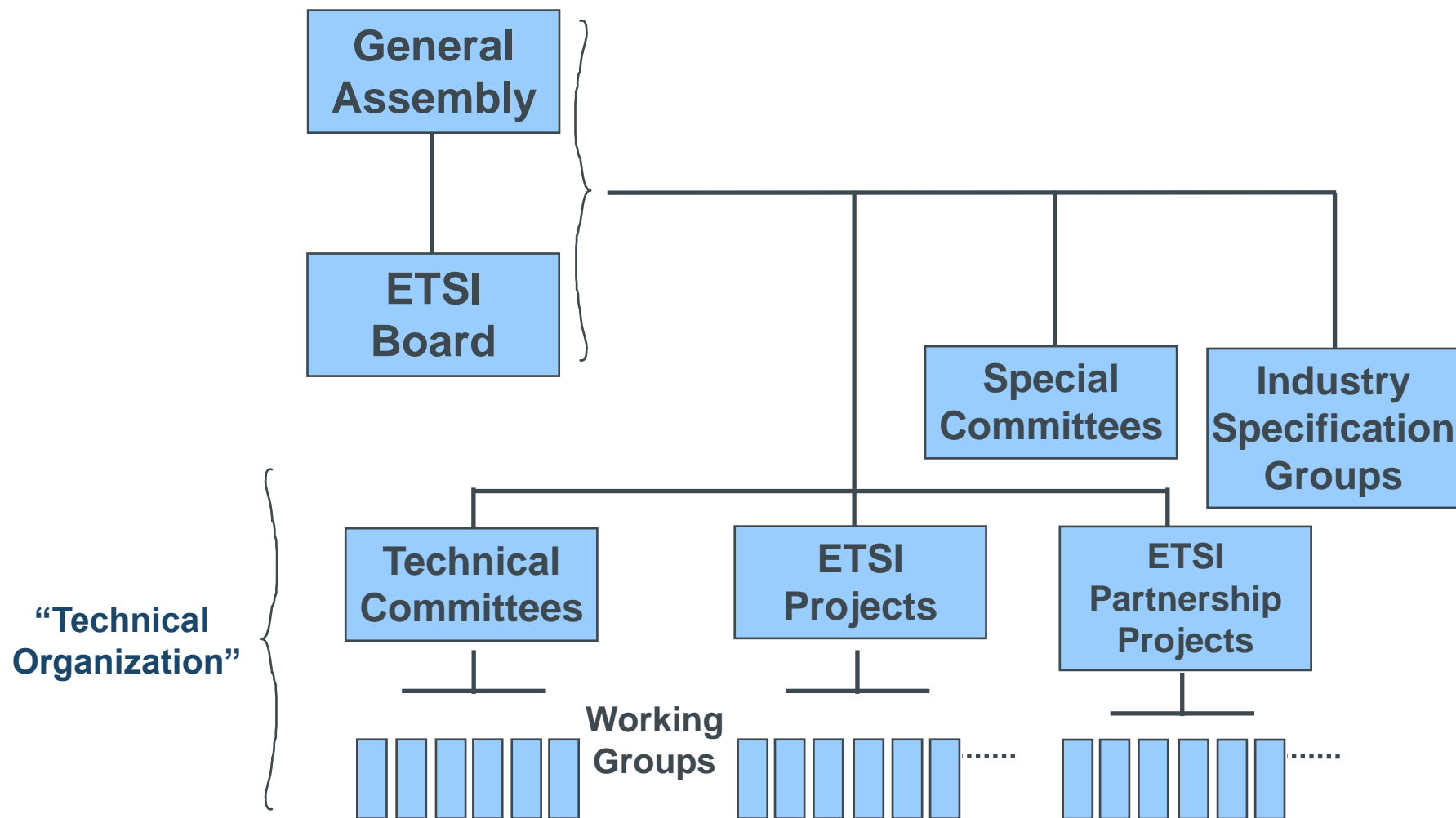
Presented by: **Gavin Craik, Senior  
Technical Content Officer**

For: **ETSI Seminar**

20.05.2021

# ETSI Governance

# The ETSI structure



**The ETSI Secretariat gives support to all the different entities in the Organization**

# General Assembly Tasks

---



Appointments

Rules & Regulations

Membership

Budget & financial matters

Annual Report

Final point of approval

Appeals



# ETSI Board Powers and functions (1)

---



Work Programme

Application of financial resources

✓ including for STFs within agreed financial framework

Advice to GA on finance/resource issues

Creating/closing TCs , EPs and SCs

Appointing TC and EP Chairmen

Standstill

Resolving drafting problems

Standardization policy & performance

Communication

...

# ETSI Board Powers and functions (2)



Resource framework for Technical Organization

Overseeing Technical Organization

External relations

Technical Working Procedures (TWP)

Disputes/appeals/complaints

- ✓ on procedural matters
- ✓ in Technical Organization
- ✓ from non-members

**Board elections last held  
in Nov 2020  
for a 3-year period to Nov  
2023**

A green starburst graphic with a black outline, containing text about the last board elections.

**29 elected members  
including 1 SME &  
1 User representative\***

A yellow starburst graphic with a black outline, containing text about the composition of the board.

\* RoP Annex 7: Number of Board members between 15 and 30

# Who's who in ETSI Governance

---



Dirk Weiler, Board chairman



Neviana Nikoloski, GA chairman



Luis Jorge Romero, ETSI DG

# ETSI Directives

---

ETSI Statutes

ETSI Rules of Procedure (RoP)

Guidelines on Annex 2 of RoP (financial contributions)

ETSI Guide on Intellectual Property Rights

ETSI Guidelines for Antitrust Compliance

ETSI Board Working Procedures

Powers and Functions of the Board

ETSI Financial Regulations

Terms of Reference of the Operational Co-ordination Group (OCG)

Guidelines about former elected officials & former ETSI staff

ETSI Technical Working Procedures (TWP)

ETSI Drafting Rules

<http://portal.etsi.org/Directives/home.asp>





# Decision Making

# Decision making processes

---

## Consensus

✔ Preferred

## Weighted Individual Voting

✔ Voting by individual member organizations

## Weighted National Voting

✔ Voting by Head of National Delegation or National Standards Authority

# Weighted Individual Voting

---

Voting by individual member organizations

Vote weighted in accordance to member's Units of Contribution

Used for:

- ✔ Voting in a TB
- ✔ Approval of ETSI Standards and ETSI Guides
- ✔ Election of officials to General Assembly
- ✔ Election of Board members and Board Chairman
- ✔ Selection of Director-General
- ✔ Matters relating to the European Union (Full Members only)

# Weighted Individual Voting

---

Success = 71% of votes cast are in favour

In General Assembly:

- ✓ proxy voting permitted
- ✓ quorum of 50% of weighted votes

Otherwise:

- ✓ no quorum specified

Vote splitting

- ✓ in general, vote splitting is not permitted
  - ✓ because each Member has only one vote, which is weighted
- ✓ the only exception is for the election of Board members
  - ✓ Each ETSI Member (Full, Associate) may use as many votes as its individual weight
  - ✓ And may split those votes on as many candidates as it has votes (see Annex 7 of the Rules of Procedure)

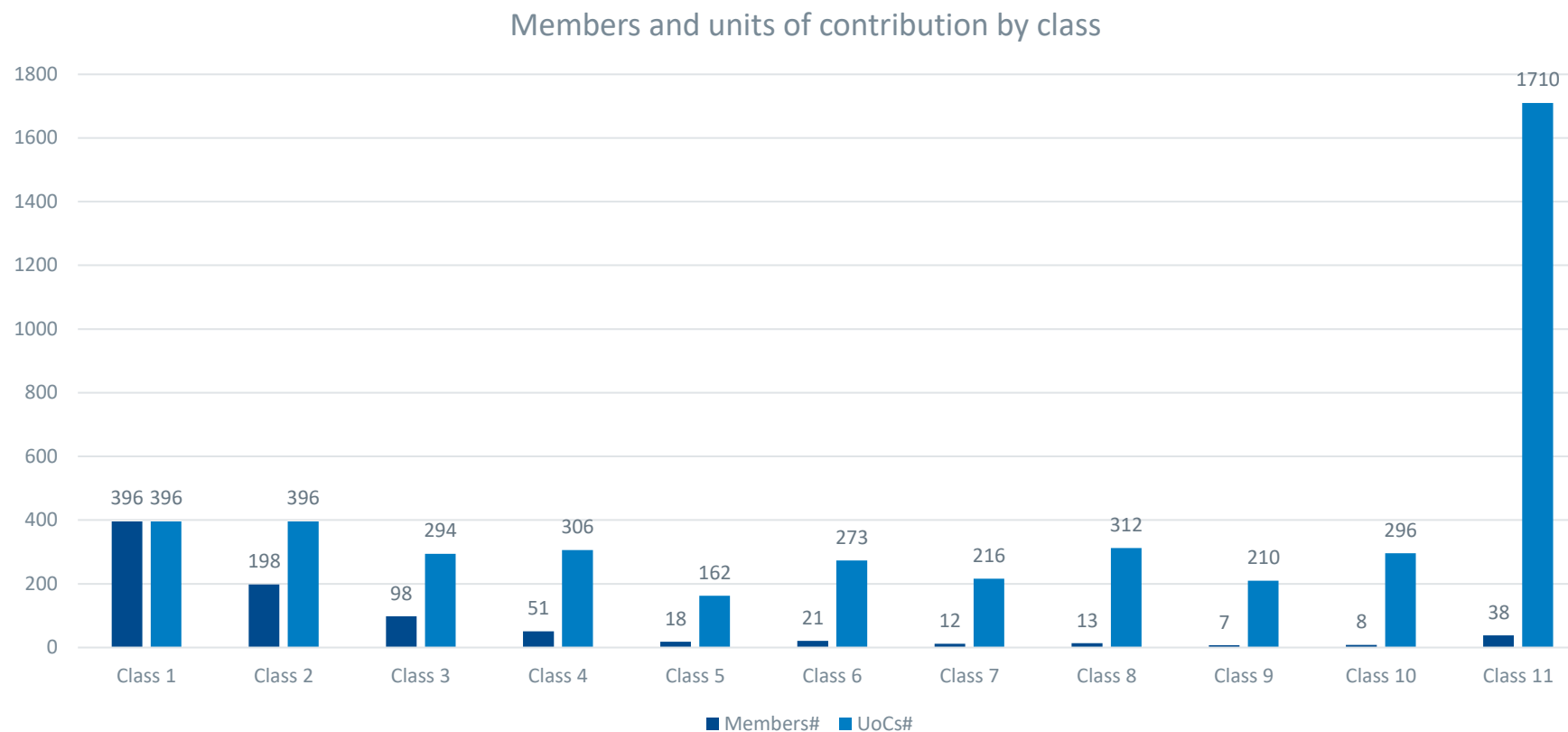
## Membership contributions (not Administrations)

ECRT in 10 <sup>6</sup> euro	Number of Units	Fees
SME, User, “Additional membership”	1	2k/3k/6k
up to 135	2	9 380
136 to 200	3	12 760
201 to 450	6	22 900
451 to 700	9	33 040
701 to 1350	13	46 560
1351 to 2000	18	63 460
2001 to 3500	24	83 740
3501 to 5000	30	104 020
5001 to 8000	37	127 680
above 8000	45	154 720

ECRT: Global electronics communications-related turnover

# Membership voting weights (UoC) by membership class

(Class 1 to 11 – see <http://www.etsi.org/membership/fees>)



# National Weighted Voting

---

Voting cast by Head of National Delegation

✓ taking account of views of national members

Used for

✓ NSO Approval of ENs

✓ GA voting on changes to Statutes and Rules of Procedure

✓ GA voting on establishment of national weightings

Not available to countries of Associate Members

Only available to countries having a Member in the Administration, Other Governmental Bodies, or National Standards Organizations category which contributes to ETSI according to the country's Gross Domestic Product (GDP)

# National Weighted Voting

---

Weighting determined when nation joins ETSI

Quorum of 50% of weighted votes

Proxy voting permitted when in GA

Success = 71% of weighted votes in favour



# National weightings

GERMANY	29
UNITED KINGDOM	29
FRANCE	29
ITALY	29
SPAIN	27
POLAND	27
ROMANIA	14
NETHERLANDS	13
RUSSIA	12
TURKEY	12
GREECE	12
PORTUGAL	12
BELGIUM	12
CZECH REPUBLIC	12
HUNGARY	12
UKRAINE	10
SWEDEN	10
AUSTRIA	10
BULGARIA	10
SWITZERLAND	10

SLOVAK REPUBLIC	7
DENMARK	7
FINLAND	7
NORWAY	7
IRELAND	7
SERBIA	7
CROATIA	7
LITHUANIA	7
ALBANIA	4
LATVIA	4
SLOVENIA	4
GEORGIA	4
ESTONIA	4
CYPRUS	4
LUXEMBOURG	4
MALTA	3
ICELAND	3
BOSNIA & HERZEGOVINA	3
FYR OF MACEDONIA	3
MOLDOVA	3
MONTENEGRO	3