



The Standards People



ETSI Governance and Decision Making

Presented by: **Gavin Craik**

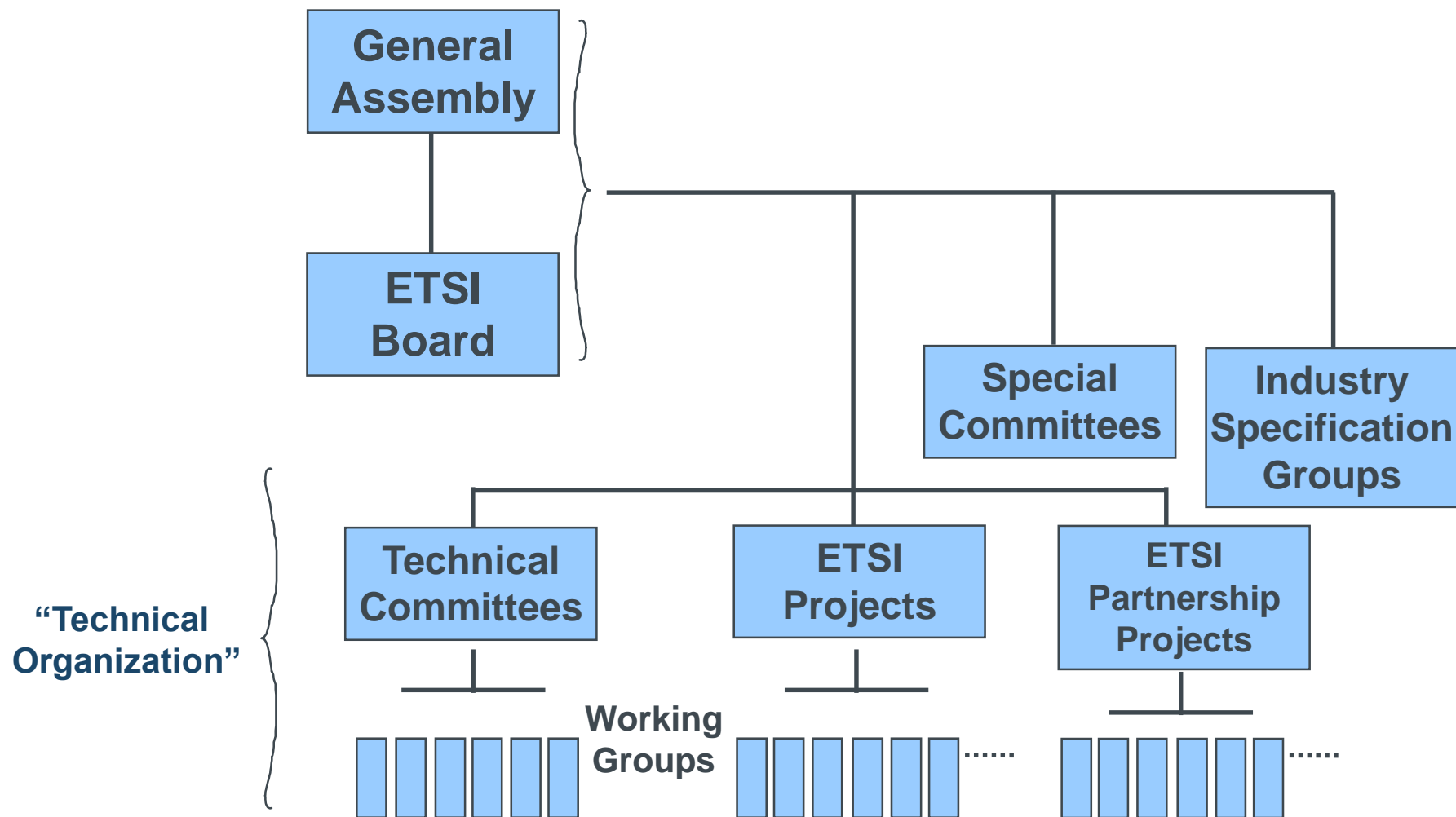
For: **ETSI Seminar**

06-07.06.2018



ETSI Governance

The ETSI structure



The ETSI Secretariat gives support to all the different entities in the Organization

General Assembly Tasks



Appointments

Rules & Regulations

Membership

Budget & financial matters

Annual Report

Final point of approval

Appeals



ETSI Board Powers and functions (1)



Work Programme

Application of financial resources

✓ including for STFs within agreed financial framework

Advice to GA on finance/resource issues

Creating/closing TCs , EPs and SCs

Appointing TC and EP Chairmen

Standstill

Resolving drafting problems

Standardization policy & performance

Communication

...

ETSI Board Powers and functions (2)



Resource framework for Technical Organization

Overseeing Technical Organization

External relations

Technical Working Procedures (TWP)

Disputes/appeals/complaints

- ✓ on procedural matters
- ✓ in Technical Organization
- ✓ from non-members

**New Board elections
Nov 2017
for a 3-year period**

A green starburst graphic with a black outline, containing text about board elections.

**Currently 30 members
including 1 SME &
1 User representative***

A yellow starburst graphic with a black outline, containing text about the current number of board members.

* RoP Annex 7: Number of Board members between 15 and 30

Who's who in ETSI Governance



Dirk Weiler, Board chairman



Neviana Nikoloski, GA chairman



Luis Jorge Romero, ETSI DG

ETSI Directives

ETSI Statutes

ETSI Rules of Procedure (RoP)

Guidelines on Annex 2 of RoP (financial contributions)

ETSI Guide on Intellectual Property Rights

ETSI Guidelines for Antitrust Compliance

ETSI Board Working Procedures

Powers and Functions of the Board

ETSI Financial Regulations

Terms of Reference of the Operational Co-ordination Group (OCG)

Guidelines about former elected officials & former ETSI staff

ETSI Technical Working Procedures (TWP)

ETSI Drafting Rules

<http://portal.etsi.org/Directives/home.asp>



Decision Making

Decision making processes

Consensus

✓ Preferred

Weighted Individual Voting

✓ Voting by individual member organizations

Weighted National Voting

✓ Voting by Head of National Delegation or National Standards Authority

Weighted Individual Voting

Voting by individual member organizations

Vote weighted in accordance to member's Units of Contribution

Used for:

- ✔ Voting in a TB
- ✔ Approval of ETSI Standards and ETSI Guides
- ✔ Election of officials to General Assembly
- ✔ Election of Board members and Board Chairman
- ✔ Selection of Director-General
- ✔ Matters relating to European Union (Full Members only)

Weighted Individual Voting

Success = 71% of votes cast are in favour

In General Assembly:

- ✓ proxy voting permitted
- ✓ quorum of 50% of weighted votes

Otherwise:

- ✓ no quorum specified

Vote splitting

- ✓ in general, vote splitting is not permitted
 - ✓ because each Member has only one vote, which is weighted
- ✓ the only exception is for the election of Board members
 - ✓ Each ETSI Member (Full, Assoc) may use as many votes as its individual weight
 - ✓ And may split those votes on as many candidates as it has votes (see Annex 7 of the Rules of Procedure)

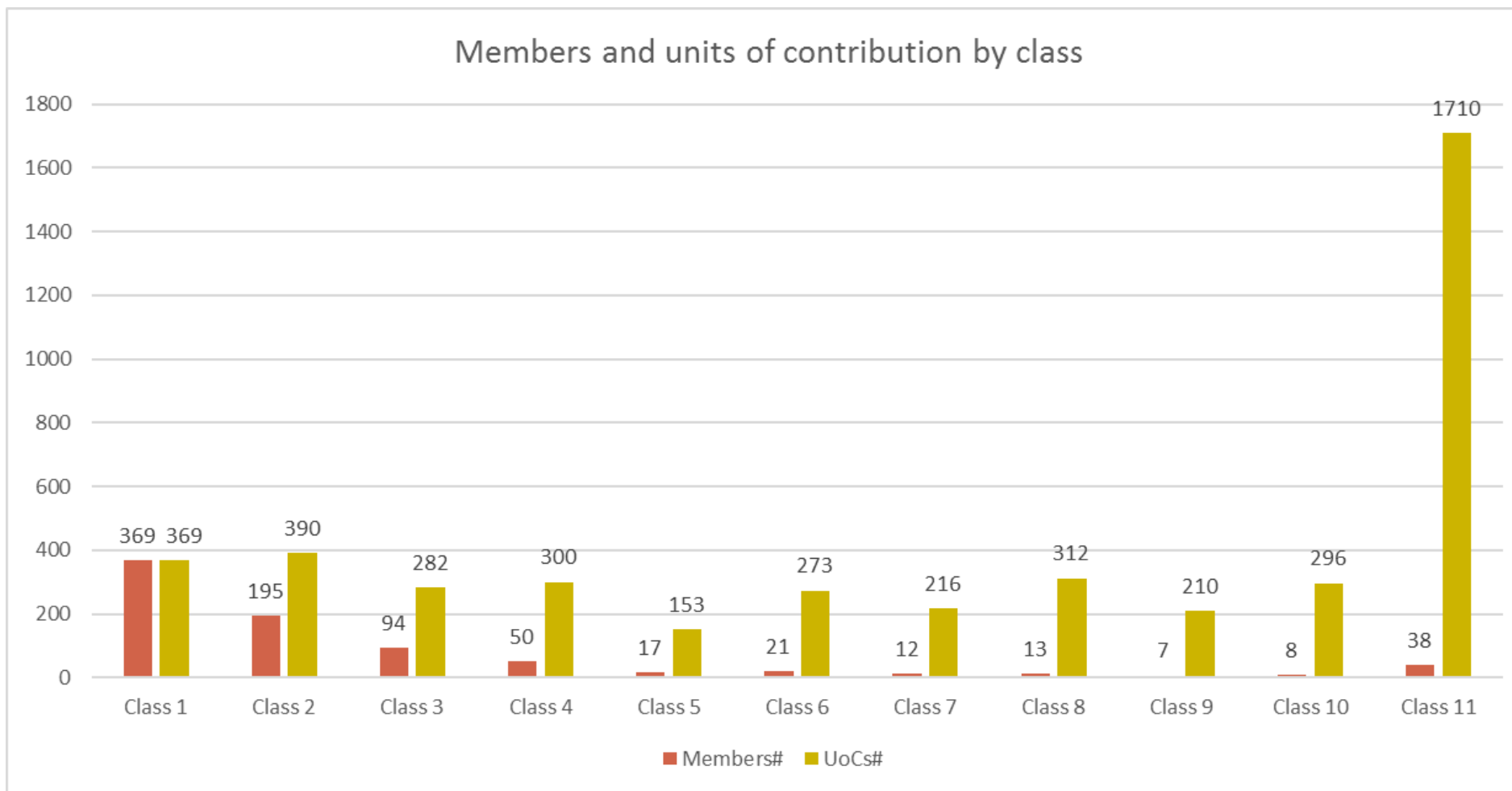
Membership contributions (not Administrations)

| ECRT in 10 ⁶ euro | Number of Units | Fees |
|------------------------------------|-----------------|----------|
| SME, User, "Additional membership" | 1 | 2k/3k/6k |
| up to 135 | 2 | 9 380 |
| 136 to 200 | 3 | 12 760 |
| 201 to 450 | 6 | 22 900 |
| 451 to 700 | 9 | 33 040 |
| 701 to 1350 | 13 | 46 560 |
| 1351 to 2000 | 18 | 63 460 |
| 2001 to 3500 | 24 | 83 740 |
| 3501 to 5000 | 30 | 104 020 |
| 5001 to 8000 | 37 | 127 680 |
| above 8000 | 45 | 154 720 |

ECRT: Global electronics communications-related turnover

Membership voting weights (UoC) by membership class

(Class 1 to 11 – see <http://www.etsi.org/membership/fees>)



National Weighted Voting

Voting cast by Head of National Delegation

✓ taking account of views of national members

Used for

✓ NSO Approval of ENs

✓ GA voting on changes to Statutes and Rules of Procedure

✓ GA voting on establishment of national weightings

Not available to countries of Associate Members

Only available to countries having a Member in the Administration, Other Governmental Bodies, or National Standards Organizations category which contributes to ETSI according to the country's Gross Domestic Product (GDP)

National Weighted Voting

Weighting determined when nation joins ETSI

Quorum of 50% of weighted votes

Proxy voting permitted when in GA

Success = 71% of weighted votes in favour

National weightings

| | |
|----------------|----|
| GERMANY | 29 |
| UNITED KINGDOM | 29 |
| FRANCE | 29 |
| ITALY | 29 |
| SPAIN | 27 |
| POLAND | 27 |
| ROMANIA | 14 |
| NETHERLANDS | 13 |
| RUSSIA | 12 |
| TURKEY | 12 |
| GREECE | 12 |
| PORTUGAL | 12 |
| BELGIUM | 12 |
| CZECH REPUBLIC | 12 |
| HUNGARY | 12 |
| UKRAINE | 10 |
| SWEDEN | 10 |
| AUSTRIA | 10 |
| BULGARIA | 10 |
| SWITZERLAND | 10 |

| | |
|----------------------|---|
| SLOVAK REPUBLIC | 7 |
| DENMARK | 7 |
| FINLAND | 7 |
| NORWAY | 7 |
| IRELAND | 7 |
| SERBIA | 7 |
| CROATIA | 7 |
| LITHUANIA | 7 |
| ALBANIA | 4 |
| LATVIA | 4 |
| SLOVENIA | 4 |
| GEORGIA | 4 |
| ESTONIA | 4 |
| CYPRUS | 4 |
| LUXEMBOURG | 4 |
| MALTA | 3 |
| ICELAND | 3 |
| BOSNIA & HERZEGOVINA | 3 |
| FYR OF MACEDONIA | 3 |
| MOLDOVA | 3 |
| MONTENEGRO | 3 |

(November 2015)