

# ETSI TS 144 071 V4.3.0 (2002-07)

---

*Technical Specification*

**Digital cellular telecommunications system (Phase 2+);  
Location Services (LCS);  
Mobile radio interface layer 3 LCS specification  
(3GPP TS 44.071 version 4.3.0 Release 4)**

---



---

Reference

RTS/TSGG-0244071v430

---

Keywords

GSM

**ETSI**

650 Route des Lucioles  
F-06921 Sophia Antipolis Cedex - FRANCE

Tel.: +33 4 92 94 42 00 Fax: +33 4 93 65 47 16

Siret N° 348 623 562 00017 - NAF 742 C  
Association à but non lucratif enregistrée à la  
Sous-Préfecture de Grasse (06) N° 7803/88

---

**Important notice**

Individual copies of the present document can be downloaded from:

<http://www.etsi.org>

The present document may be made available in more than one electronic version or in print. In any case of existing or perceived difference in contents between such versions, the reference version is the Portable Document Format (PDF). In case of dispute, the reference shall be the printing on ETSI printers of the PDF version kept on a specific network drive within ETSI Secretariat.

Users of the present document should be aware that the document may be subject to revision or change of status. Information on the current status of this and other ETSI documents is available at

<http://portal.etsi.org/tb/status/status.asp>

If you find errors in the present document, send your comment to:

[editor@etsi.fr](mailto:editor@etsi.fr)

---

**Copyright Notification**

No part may be reproduced except as authorized by written permission.  
The copyright and the foregoing restriction extend to reproduction in all media.

© European Telecommunications Standards Institute 2002.  
All rights reserved.

DECT™, PLUGTESTS™ and UMTS™ are Trade Marks of ETSI registered for the benefit of its Members.  
TIPHON™ and the TIPHON logo are Trade Marks currently being registered by ETSI for the benefit of its Members.  
3GPP™ is a Trade Mark of ETSI registered for the benefit of its Members and of the 3GPP Organizational Partners.

---

## Intellectual Property Rights

IPRs essential or potentially essential to the present document may have been declared to ETSI. The information pertaining to these essential IPRs, if any, is publicly available for **ETSI members and non-members**, and can be found in ETSI SR 000 314: "*Intellectual Property Rights (IPRs); Essential, or potentially Essential, IPRs notified to ETSI in respect of ETSI standards*", which is available from the ETSI Secretariat. Latest updates are available on the ETSI Web server (<http://webapp.etsi.org/IPR/home.asp>).

Pursuant to the ETSI IPR Policy, no investigation, including IPR searches, has been carried out by ETSI. No guarantee can be given as to the existence of other IPRs not referenced in ETSI SR 000 314 (or the updates on the ETSI Web server) which are, or may be, or may become, essential to the present document.

---

## Foreword

This Technical Specification (TS) has been produced by ETSI 3rd Generation Partnership Project (3GPP).

The present document may refer to technical specifications or reports using their 3GPP identities, UMTS identities or GSM identities. These should be interpreted as being references to the corresponding ETSI deliverables.

The cross reference between GSM, UMTS, 3GPP and ETSI identities can be found under [www.etsi.org/key](http://www.etsi.org/key).

# Contents

Intellectual Property Rights .....	2
Foreword.....	2
Foreword.....	6
1 Scope .....	7
2 References .....	7
3 Definitions, abbreviations and symbols .....	8
3.1 Definitions .....	8
3.2 Abbreviations .....	8
4 Generic procedures for the control of location services .....	8
4.1 Overview of the generic protocol and its scope.....	8
4.2 Functional procedures for the control of location services .....	9
4.2.1 General.....	9
4.2.2 Common Information Element Category.....	9
4.2.3 Location service procedures .....	9
4.2.3.1 Introduction.....	9
4.2.3.2 Handling of protocol errors in LCS procedures .....	9
4.2.3.3 Handling of other errors in LCS procedures .....	10
4.2.4 Multiple location service invocations .....	10
4.2.5 Recovery procedures.....	10
4.2.6 Generic protocol error handling for the component part of location services operations .....	10
4.2.6.1 Single component errors .....	10
4.2.6.2 Multiple component errors .....	10
5 Location service support procedures .....	10
5.1 General .....	10
5.2 Location service support establishment.....	11
5.2.1 Location service support establishment at the originating side.....	11
5.2.2 Location service support establishment at the terminating side.....	11
5.3 Location service support information transfer phase.....	11
5.4 Location service support release .....	11
5.5 Recovery procedures .....	11
5.6 Message flow (single operation example).....	11
5.6.1 LMU initiated location service transaction.....	12
5.6.2 Network initiated location service transaction.....	13
5.7 Handling of unknown, unforeseen, and erroneous protocol data .....	13
5.7.1 General.....	13
5.7.2 Message too short .....	14
5.7.3 Unknown or unforeseen transaction identifier.....	14
5.7.4 Unknown or unforeseen message type.....	14
5.7.5 Non-semantical mandatory Information Element Error.....	14
5.7.6 Unknown and Unforeseen IEs in the non-imperative part .....	15
5.7.6.1 IEs unknown in the message.....	15
5.7.6.2 Out of sequence IEs .....	15
5.7.6.3 Repeated IEs .....	15
5.7.7 Non-imperative message part errors .....	15
5.7.7.1 Syntactically incorrect optional IEs (other than Facility).....	15
5.7.7.2 Conditional IE errors.....	15
6 Message functional definitions and contents.....	16
6.1 General .....	16
6.2 Messages for location services control.....	16
6.3 Facility.....	17
6.4 Register .....	17
6.4.1 Register (network to LMU direction) .....	17

6.4.2	Register (LMU to network direction) .....	17
6.5	Release complete .....	18
6.5.1	Cause .....	18
6.5.2	Facility .....	18
7	General message format and information elements coding.....	18
7.1	Overview .....	18
7.2	Protocol discriminator .....	19
7.3	Transaction identifier .....	19
7.4	Message type .....	19
7.5	Facility information element .....	19
7.6	Release forbidden .....	19
8	Detailed message format and information elements coding.....	20
8.1	Transparent LCS Information.....	20
8.1.1	Operation Code .....	21
8.1.2	Error Code .....	21
8.1.3	Problem Code .....	22
9	LMU LCS Protocol operation specifications .....	22
9.1	General .....	22
9.2	Operation types .....	23
9.2.1	Operation types description .....	26
9.2.1.1	StartRIT (network --> LMU) .....	26
9.2.1.2	ReportRIT (LMU -->network).....	26
9.2.1.3	StopRIT (network --> LMU) .....	26
9.2.1.4	IndicateRITError (LMU --> network).....	26
9.2.1.5	Void.....	26
9.2.1.6	StatusQuery (network --> LMU).....	26
9.2.1.7	StatusUpdate (LMU --> network).....	26
9.2.1.8	ResetRequest (network --> LMU).....	26
9.2.1.9	OMMngrRequest (network --> LMU) .....	26
9.2.1.10	OMAgntRequest (LMU -> network) .....	26
10.3	Error types .....	27
10.3.1	Error types ASN.1 specification .....	27
10.3.2	Error types description.....	27
10.3.2.4	SystemFailure.....	27
10.3.2.5	DataMissing .....	27
10.3.2.6	UnexpectedDataValue.....	27
10.3.2.7	ResourcesNotAvailable.....	27
10.3.2.9	UnDefinedError .....	27
10.4	Operations and errors implementation .....	28
11	LMU LCS Protocol (LLP) messages .....	29
11.1	Messages, data types and identifiers.....	29
11.1.1	General.....	29
11.1.2	ASN.1 data types .....	29
11.1.3	Identifiers definition .....	37
<b>Annex A (informative): RIT messages.....</b>		<b>38</b>
A.1	Introduction .....	38
A.2	Messages .....	38
A.2.1	RIT Measurement Request Message .....	38
A.2.1.1	RIT Measurement Request Message Information Elements .....	38
A.2.1.1.1	Message Type IE .....	38
A.2.1.1.2	Measurement Instructions IE.....	38
A.2.1.1.3	BTS List IE.....	40
A.2.2	RIT Measurement Response Message .....	41
A.2.2.1	RIT Measurement Response Message Information Elements.....	41
A.2.2.1.1	Message type IE .....	41
A.2.2.1.2	RIT Measurement IE .....	41
A.2.3	RIT Measurement Stop Message .....	46
A.2.3.1	RIT Measurement Stop Message Information Elements.....	46

A.2.3.1.1	Message type IE .....	46
A.2.4	RIT Measurement Error Message .....	46
A.2.4.1	RIT Measurement Error Message Information Elements.....	46
A.2.4.1.1	Message type IE .....	46
A.2.4.1.2	RIT Error Type IE .....	46
A.2.4.1.3	RIT Error IE .....	47
<b>Annex B (informative): Void .....</b>		<b>48</b>
<b>Annex C (informative): Status Messages.....</b>		<b>49</b>
C.1	Introduction .....	49
C.2	Messages .....	49
C.2.1	Status Query Message.....	49
C.2.1.1	Status Query Message Information Elements .....	49
C.2.1.1.1	Message Type IE .....	49
C.2.2	Status Query Result Message.....	49
C.2.2.1	Status Query Result Message Information Elements .....	49
C.2.2.1.1	Message Type IE .....	49
C.2.2.1.2	Time IE.....	50
C.2.2.1.3	RIT Status IE .....	50
C.2.2.1.4	Reserved IE .....	50
C.2.2.1.5	O&M Status IE.....	50
C.2.3	Status Update Message .....	51
C.2.3.1	Status Update Message Information Elements .....	51
C.2.3.1.1	Message Type IE .....	51
C.2.3.1.2	Reason for Status Update IE.....	51
<b>Annex D (informative): Change history .....</b>		<b>52</b>
History .....		53

---

## Foreword

This Technical Specification has been produced by the 3<sup>rd</sup> Generation Partnership Project (3GPP).

The present document defines the contents of LCS assistance data broadcast messages from the Serving Mobile Location Centre (SMLC) and the Mobile Station (MS).

The contents of the present document are subject to continuing work within the TSG and may change following formal TSG approval. Should the TSG modify the contents of the present document, it will be re-released by the TSG with an identifying change of release date and an increase in version number as follows:

Version x.y.z

where:

- x the first digit:
  - 1 presented to TSG for information;
  - 2 presented to TSG for approval;
  - 3 or greater indicates TSG approved document under change control.
- y the second digit is incremented for all changes of substance, i.e. technical enhancements, corrections, updates, etc.
- z the third digit is incremented when editorial only changes have been incorporated in the document.

---

# 1 Scope

The present document contains the coding of information necessary for support of location service operation on the mobile radio interface layer 3 between the LMU and SMLC.

Clause 4 defines generic procedures for the control of location services. In clause 5 location service support procedures are defined. Clause 6 gives the functional definitions and contents of messages for location service operations. Clause 7 gives the general format and coding for messages used for location service and the format and coding of information elements used for location service operations. Clause 6 gives the detailed message format and information elements coding between the LMU and SMLC.

Clause 8 gives the specification of the LMU LCS Protocol (LLP) operations. In clause 9 LMU – SMLC messages, data types and identifiers are given.

This version does not support segmentation of messages.

---

# 2 References

The following documents contain provisions which, through reference in this text, constitute provisions of the present document.

- References are either specific (identified by date of publication, edition number, version number, etc.) or non-specific.
- For a specific reference, subsequent revisions do not apply.
- For a non-specific reference, the latest version applies. In the case of a reference to a 3GPP document (including a GSM document), a non-specific reference implicitly refers to the latest version of that document *in the same Release as the present document*.

- [1] 3GPP TS 21.905: "Vocabulary for 3GPP Specifications".
- [2] 3GPP TS 44.006: "Mobile Station - Base Station System (MS - BSS) interface Data Link (DL) layer specification".
- [3] 3GPP TS 24.007: "Mobile radio interface signalling layer 3; General aspects".
- [4] 3GPP TS 44.018: "Mobile radio interface layer 3 specification; Radio Resource Control Protocol".
- [5] 3GPP TS 43.059: "Functional Stage 2 Description of Location Services in GERAN".
- [6] 3GPP TS 29.002: "Mobile Application Part (MAP) specification".
- [7] ASN.1 encoding rules "Specification of Packet Encoding Rules (PER)" ITU-T Rec. X.691 (1997) | ISO/IEC 8825-2:1998



- [8] ASN.1 encoding rules “Specification of Basic Encoding Rules (BER), Canonical Encoding Rules (CER) and Distinguished Encoding Rules (DER)” ITU-T Rec.X.690 (1997) | ISO/IEC 8825-1:1998
- [9] Abstract Syntax Notation One (ASN.1) “Specification of Basic Notation” ITU-T Rec.X.680 (1997) | ISO/IEC 8824 – 1:1998
- [10] ITU-T Recommendation Q.773: "Transaction capabilities formats and encoding".
- [11] Void
- [12] 3GPP TS 44.004: "Layer 1 General requirements".
- [13] 3GPP TS 44.005: "Data Link (DL) layer General aspects".
- [14] 3GPP TS 24.008: "Mobile radio interface layer 3 specification; Core Network Protocols – Stage 3 (Release 4)".
- [15] 3GPP TS 45.002: "Multiplexing and Multiple Access on the Radio Path".
- [16] 3GPP TS 52.071: "Location Services (LCS); Location services management".

---

## 3 Definitions, abbreviations and symbols

### 3.1 Definitions

For the purposes of the present document, the following terms and definitions apply.

**E-OTD Assistance Data Message:** E-OTD Assistance Data contains the RTD and BTS coordinates of the neighbours that should be used in E-OTD measurements. This E-OTD Assistance Data is broadcasted using CBCH channel using SMSCB DRX service. The reception of this broadcast message enables MS to calculate its own location.

**GPS Assistance Data Message:** GPS Assistance Data Message contains GPS differential corrections. The reception of this broadcast message enables MS to have calculate more accurate location estimate.

### 3.2 Abbreviations

Abbreviations used in the present document are listed in 3GPP TS 21.905 and 3GPP TS 43.059.

---

## 4 Generic procedures for the control of location services

### 4.1 Overview of the generic protocol and its scope

One generic protocol is defined for the control of location services at the radio interface. This protocol operates at layer 3 of the radio interface and assumes the use of layers 1 and 2 conform to 3GPP TS 45-series and 3GPP TS 44.004, 3GPP TS 44.005 and 3GPP TS 44.006. The generic protocol uses the acknowledged information transfer service available at the layer 2 - layer 3 interface.

The Functional protocol is based on the use of the Facility information element and the FACILITY message as well as other specific functional messages specified in this specification.

## 4.2 Functional procedures for the control of location services

### 4.2.1 General

This sub-clause specifies the functional signalling procedures for the control of location services at the radio interface.

The functional protocol utilizes functions and services defined in 3GPP TS 24.008, 3GPP TS 44.018 and the functions of the data link layer as defined in 3GPP TS 44.006. This protocol utilizes also definitions in 3GPP TS 24.007.

The Common Information Element Category utilizes the Facility information element to transport the protocol defined in this specification. The use of the Facility information element is common to many services, and its contents indicates what type of procedure is being requested. This category can be signalled both in the LMU to network and the network to LMU directions.

The correlation of location service operations and their responses, is provided by the combination of the transaction identifier of the messages containing the Facility information element and the Invoke identifier present within the Facility information element itself.

### 4.2.2 Common Information Element Category

The Common Information Element Category uses operations defined in this specification for location services signalling. Procedures are initiated by sending an operation including an invoke component. The invoke component may yield a Return Error, Return Result or Reject component (also included in an operation) depending on the outcome of the procedure.

The operation state machines, and procedures for management of Invoke IDs specified in CCITT Recommendation Q.774 White Book are used.

A REGISTER message, a FACILITY message or RELEASE COMPLETE message is used to carry the Facility information element which includes these operations. These operations request, acknowledge or reject the desired location service procedure.

### 4.2.3 Location service procedures

#### 4.2.3.1 Introduction

For location service procedures independent of any call, the initiating side must establish a MM-connection between the network and the LMU according to the rules given in 3GPP TS 24.007 and 3GPP TS 24.008. The LMU or the network starts the transaction by transferring a REGISTER message across the radio interface. This transaction is identified by the transaction identifier associated with the REGISTER message present in the component part of the Facility information element. Following the REGISTER message one or more FACILITY messages may be transmitted, all of them related by the use of the same transaction identifier. If the transaction is no longer used, it shall be released by sending a RELEASE COMPLETE message. This procedure is specified in detail in clause 5, and the text in clause 5 takes precedence over this introduction.

To convey the location service invocation, the Facility information element is used. The Facility information element present either in the REGISTER message or a subsequent message identifies the location service involved and the type of component (i.e. Invoke, Return result, Return error or Reject component).

When the REGISTER or FACILITY message contains a Facility information element and the requested service is available, a FACILITY message containing a Facility information element may be returned. One or more exchanges of FACILITY messages may subsequently occur. To terminate the service interaction and release the transaction identifier value, a RELEASE COMPLETE message is sent as specified for the specific location service procedure. The RELEASE COMPLETE message may also contain the Facility information element.

#### 4.2.3.2 Handling of protocol errors in LCS procedures

Messages containing a Facility information element shall be checked for protocol errors before the contents of the Facility IE is acted on. The checks shall be performed in the following order:

- 1) The message carrying the Facility IE shall be checked for protocol errors as specified in subclause 5.7. If a protocol error is found then the procedures in subclause 5.7 apply.
- 2) The contents of the Facility IE shall be checked for protocol errors as specified in subclause 4.2.6. If a protocol error is found then the procedures in subclause 4.2.6 apply.

### 4.2.3.3 Handling of other errors in LCS procedures

If the tests specified in subclause 4.2.3.2 have been passed without the detection of a protocol error, the receiver will attempt to process the contents of the Facility Information Element. If errors occur during this processing (e.g. system failure, or information in the Facility IE is incompatible with the requested operation) then the procedures specified in the individual service specifications apply.

An example of the behaviour that could occur in this case is:

- the LMU or network sends a Facility information element containing a return error component in a FACILITY or RELEASE COMPLETE message. If the FACILITY message is used then the MM Connection may continue to be used for further signalling.

### 4.2.4 Multiple location service invocations

It is possible for several LCS transactions to be used simultaneously. LCS transactions can also exist in parallel with other CM-Layer and MM transactions. The handling of multiple MM connections is defined in 3GPP TS 24.007 and 3GPP TS 24.008.

A single Facility Information Element shall not contain more than one component.

### 4.2.5 Recovery procedures

In case a transaction is not terminated according to the normal procedure as described in this specification the network side has to ensure that the transaction is terminated e.g. by a supervision timer.

### 4.2.6 Generic protocol error handling for the component part of location services operations

If a location service operation is to be rejected the operation will be denied, and provided the transaction is still in progress, an appropriate reject component will be returned in a Facility Information Element.

#### 4.2.6.1 Single component errors

The reject component shall be sent in a RELEASE COMPLETE message.

If the component containing the error was itself sent in a RELEASE COMPLETE message then the contents of the component shall be ignored, and no reject component is sent.

#### 4.2.6.2 Multiple component errors

If a single Facility IE contains more than one component then a RELEASE COMPLETE message with the cause "Facility rejected" and without any component shall be sent.

---

## 5 Location service support procedures

### 5.1 General

This clause describes the location service support procedures at the radio interface. These procedures are provided by the location service support entity defined in 3GPP TS 24.007. The location service support procedures provide the

means to transfer messages for the location service procedures. These procedures are regarded as the user of the location service support.

## 5.2 Location service support establishment

At the beginning of each location service procedure a location service support must be established.

### 5.2.1 Location service support establishment at the originating side

If the entity that uses the location support procedures needs to send a REGISTER message, the location service support entity shall first request the establishment of an MM-connection. This MM-connection is established according to 3GPP TS 24.008 and 3GPP TS 24.007. If the network is the initiating side then MM-connection establishment may involve paging the LMU.

The location service support entity shall send the REGISTER message as the first CM-message on the MM-connection. The REGISTER message is sent to the corresponding peer entity on the MM-connection and the location service support shall be regarded as being established.

### 5.2.2 Location service support establishment at the terminating side

At the terminating side a location service support is regarded as being established when an MM-connection is established. According to 3GPP TS 24.008 this can be ascertained by the receipt of the first message, with a new transaction identifier. For successful establishment of location service support this message shall be a REGISTER message.

If the terminating side needs to reject the establishment of location services support then it may be immediately initiate location services support release (see subclause 5.4).

## 5.3 Location service support information transfer phase

After the establishment of the location service support both users may exchange FACILITY messages by use of the location service support.

## 5.4 Location service support release

At the end of each location service procedure the established location service support is released, if a permanent connection is not used.

The side closing the transaction shall release the transaction by sending the RELEASE COMPLETE message to its corresponding peer entity.

Both location service support entities release the MM-connection locally.

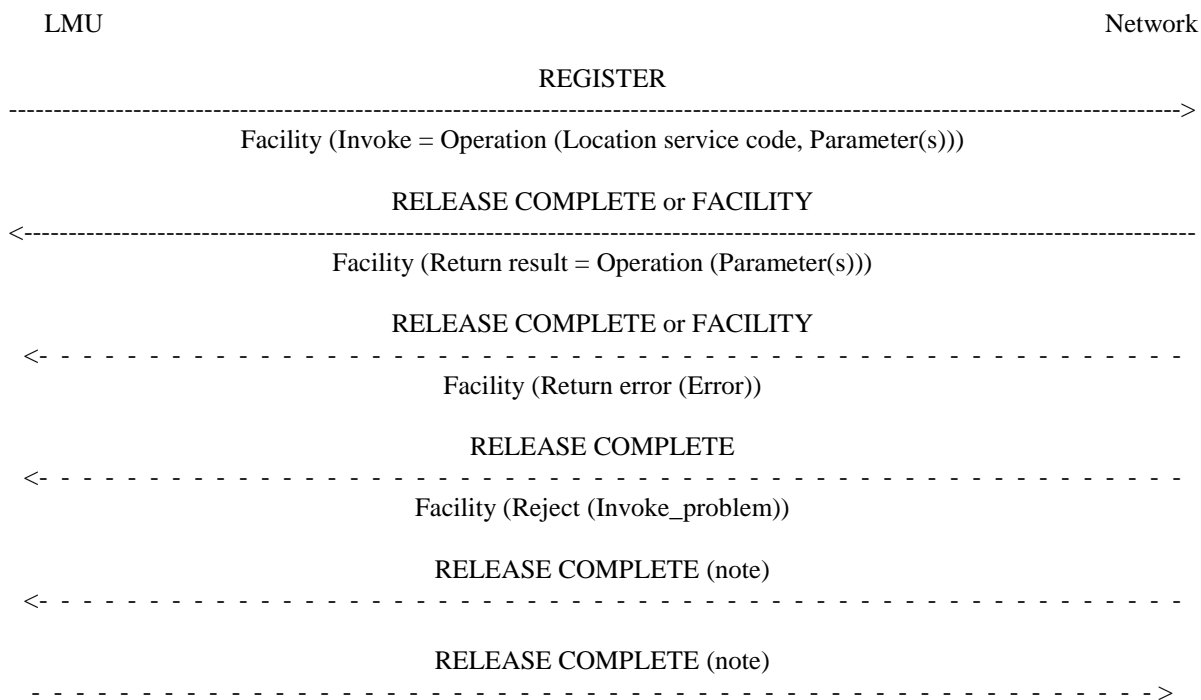
## 5.5 Recovery procedures

The location service support does not provide recovery procedures, i.e. the operations are transparent to the location service support.

## 5.6 Message flow (single operation example)

This subclause contains examples of message flows for a single transaction consisting of a single operation. These examples may not show all possibilities.

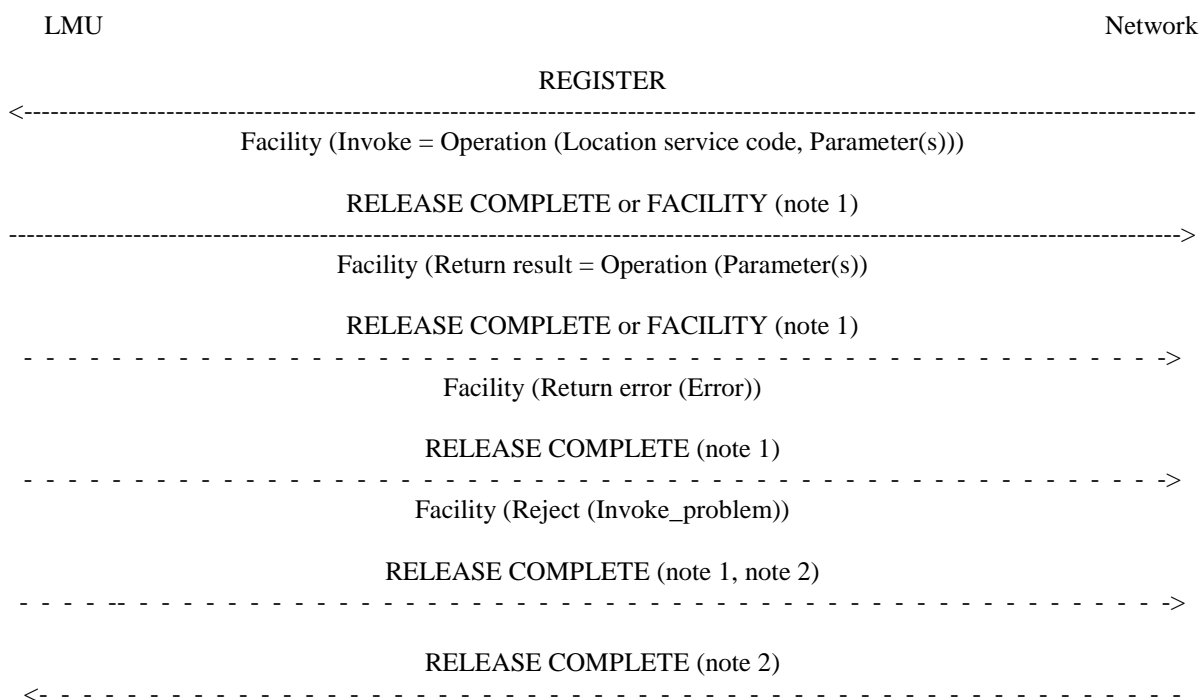
### 5.6.1 LMU initiated location service transaction



NOTE: To prevent transactions being kept open following exceptional cases, either side of the transaction may release it by sending a RELEASE COMPETE message without a Facility IE.

**Figure 3.1: LMU initiated location service transaction**

## 5.6.2 Network initiated location service transaction



NOTE 1: If the network initiated operation does not require a result, reject or error to be returned then the LMU may release the transaction by sending a RELEASE COMPLETE message without a Facility Information Element and release of transaction by LMU is allowed (i.e. Release Forbidden has not been present in Register message). If release is not allowed by LMU, the LMU sends the result using Facility message.

NOTE 2: To prevent transactions being kept open following exceptional cases, either side of the transaction may release it by sending a RELEASE COMPETE message without a Facility IE.

**Figure 3.2: Network initiated location service transaction**

## 5.7 Handling of unknown, unforeseen, and erroneous protocol data

### 5.7.1 General

These procedures only apply to messages where the protocol discriminator is set to indicate LCS operations according to the rules in 3GPP TS 24.007 and this specification. Messages that do not meet this criteria are treated according to other GSM technical specifications.

This subclause specifies procedures for handling of unknown, unforeseen and erroneous protocol data by the receiving entity. The procedures are called "error handling procedures", but they also define a compatibility mechanism for future extension of the protocol.

Most error handling procedures are mandatory in the LMU, but optional in the network. Detailed error handling procedures may vary from PLMN to PLMN.

In this subclause, the following terminology is used:

- An IE is defined to be syntactically incorrect in a message if it contains at least one value defined as "reserved" in this specification or 3GPP TS 44.018. However, it is not a syntactical error if a type 4 IE specifies a length indicator greater than that defined. The component part of the Facility information element is handled by a separate mechanism, and errors in the component part are not covered by this subclause.

The following procedures are listed in order of precedence.

Handling of errors in the contents of the Facility IE is described in subclause 4.2.6, and is outside the scope of this subclause.

### 5.7.2 Message too short

When a message is received that is too short to contain a complete message type information element, that message shall be ignored.

### 5.7.3 Unknown or unforeseen transaction identifier

The LMU shall ignore messages with the transaction identifier value set to "111".

If the transaction identifier value is not "111" the following procedures shall apply to the LMU:

- a) If a RELEASE COMPLETE message is received specifying a transaction identifier that is not recognized as relating to a LCS transaction that is in progress then the message shall be ignored.
- b) If a FACILITY message is received specifying a transaction identifier that is not recognized as relating to a LCS transaction that is in progress then a RELEASE COMPLETE message shall be sent.
- c) If a REGISTER message is received specifying a transaction identifier that is not recognized as relating to a LCS transaction that is in progress and with a transaction identifier flag incorrectly set to "1", this message shall be ignored.

The network may follow the same procedures.

### 5.7.4 Unknown or unforeseen message type

If the LMU receives a message type not defined for the protocol discriminator or not implemented by the receiver, then a RELEASE COMPLETE message shall be sent with cause value #97 "message type non-existent or not implemented".

If the LMU receives a message type not consistent with the transaction state then a RELEASE COMPLETE message shall be sent with cause value #98 "message not compatible with control state".

The network may follow the same procedures.

### 5.7.5 Non-semantical mandatory Information Element Error

When on receipt of a message:

- an "imperative message part" error; or
- a "missing mandatory IE" error;

is diagnosed, or when a message containing:

- a syntactically incorrect mandatory IE; or
- an IE unknown in the message, but encoded as "comprehension required" (see 3GPP TS 24.007); or
- an out of sequence IE encoded as "comprehension required";

is received, the LMU shall proceed as follows:

- a) If the message is not RELEASE COMPLETE it shall send a RELEASE COMPLETE message with cause "#96 - Invalid mandatory information".
- b) If the message is RELEASE COMPLETE, it shall be treated as a normal RELEASE COMPLETE message.

The network may follow the same procedures.

## 5.7.6 Unknown and Unforeseen IEs in the non-imperative part

### 5.7.6.1 IEs unknown in the message

The LMU shall ignore all IEs unknown in the message which are not encoded as "comprehension required". The network shall take the same approach.

### 5.7.6.2 Out of sequence IEs

The LMU shall ignore all out of sequence IEs in a message which are not encoded as "comprehension required".

The network may take the same approach.

### 5.7.6.3 Repeated IEs

If an information element with format T, TV or TLV (see 3GPP TS 24.007) is repeated in a message in which repetition of the information element is not specified, only the contents of the information element appearing first shall be handled and all subsequent repetitions of the information element shall be ignored. When repetition of information elements is specified, only the contents of specified repeated information elements shall be handled. If the limit on repetition of information elements is exceeded, the contents of information elements appearing first up to the limit of repetitions shall be handled and all subsequent repetitions of the information element shall be ignored.

The network may follow the same procedures.

## 5.7.7 Non-imperative message part errors

This category includes:

- syntactically incorrect optional IEs;
- conditional IE errors.

Errors in the content of the Facility IE are handled according to subclause 4.2.6.

### 5.7.7.1 Syntactically incorrect optional IEs (other than Facility)

The LMU shall treat all optional IEs that are syntactically incorrect in a message as not present in the message

The network shall take the same approach.

### 5.7.7.2 Conditional IE errors

When the LMU upon receipt of a message diagnoses a "missing conditional IE" error, or an "unexpected conditional IE error", or when it receives a message containing at least one syntactically incorrect conditional IE (other than Facility), it shall send a RELEASE COMPLETE message with cause #100 "conditional IE error".

The network may follow the same procedure.



## 6 Message functional definitions and contents

### 6.1 General

This clause defines the structure of the messages of the layer 3 protocol defined in 3GPP TS 43.059. These messages are standard L3 messages as defined in 3GPP TS 24.007.

Each definition includes:

- a) a brief description of the message;
- b) a table listing the information elements in the order of their appearance in the message. In a sequence of consecutive IEs with half octet length, the first IE occupies bits 1 to 4 of octet N, the second bits 5 to 8 of octet N, the third bits 1 to 4 of octet N+1 etc.;

For each IE the table indicates:

- 1) the information element identifier, in hexadecimal notation, if the IE has format T, TV or TLV. If the IEI has half octet length, it is specified by a notation representing the IEI as a hexadecimal digit followed by a "-" (example: B-);
  - 2) the name of the IE (which gives an idea of the semantics of the element), which is used in this and other specifications as a reference to the IE within the message;
  - 3) the name of the type of the IE (which indicates the coding of the value part of the IE), and a reference to a description of the value part of the IE;
  - 4) the presence requirement indication (M, C or O) for the IE, as defined in 3GPP TS 24.007;
  - 5) the format of the IE (T, V, TV, LV, TLV) as defined in 3GPP TS 24.007;
  - 6) the length of the IE (or permissible range of lengths), in octets, in the message, where "?" means that the maximum length of the IE is only constrained by the link layer protocol, and in the case of the facility IE by possible further considerations specified in 3GPP TS 43.059. This indication is non-normative.
- c) subclauses specifying conditions for IEs with presence requirement C or O in the relevant message. Together with other conditions specified in this specification and 3GPP TS 43.059 defines when the IE shall be included or not, what non-presence of such IEs means, and (for IEs with presence requirement C) the static conditions for presence and/or non-presence of the IEs (see 3GPP TS 24.007).

### 6.2 Messages for location services control

Table 4.1 summarises the messages for location services control.

The logical DTAP LCS Information Request and DTAP LCS Information Report messages, that are used in LCS Stage 2 (3GPP TS 43.059), are transported using REGISTER, FACILITY and RELEASE COMPLETE messages.

If there exists no LCS transaction between LMU and SMLC, REGISTER message is used to deliver the logical message. If LCS transaction between LMU and SMLC exists, FACILITY message is used to deliver the logical message. RELEASE COMPLETE message is used to indicate that LCS transaction is not any more needed, LMU can also use this message to transport logical LCS Information Response message.

**Table 4.1: Messages for location service control**

Messages for location service control	Reference
FACILITY	6.3
REGISTER	6.4
RELEASE COMPLETE	6.5

## 6.3 Facility

This message is sent by the Location Measurement Unit (LMU) or the network to request or acknowledge a location service. It is used when information is to be conveyed and the transaction already exists, but is not to be released. The location service to be invoked, and its associated parameters, are specified in the Facility information element (see table 4.2).

**Table 4.2: FACILITY message content**

IEI	Information element	Type / Reference	Presence	Format	Length
	Location service Protocol discriminator	Protocol discriminator 7.2	M	V	1/2
	Transaction identifier	Transaction identifier 7.3	M	V	1/2
	Facility Message type	Message type 7.4	M	V	1
	Facility	Facility 7.5	M	LV	2-?
90	Release forbidden	Release forbidden 7.6	O	T	1

## 6.4 Register

### 6.4.1 Register (network to LMU direction)

This message is sent by the network to the location measurement unit to assign a new transaction identifier for location service control and to request or acknowledge a location service (see table 4.3).

**Table 4.3: REGISTER message content (network to LMU direction)**

IEI	Information element	Type / Reference	Presence	Format	Length
	Location service Protocol discriminator	Protocol discriminator 7.2	M	V	1/2
	Transaction identifier	Transaction identifier 7.3	M	V	1/2
	Register Message type	Message type 7.4	M	V	1
	Facility	Facility 7.5	M	LV	2-?
90	Release forbidden	Release forbidden 7.6	O	T	1

### 6.4.2 Register (LMU to network direction)

This message is sent by the location measurement unit to the network to assign a new transaction identifier for location service control and to request or acknowledge a location service (see table 4.4).

**Table 4.4: REGISTER message content (LMU to network direction)**

IEI	Information element	Type / Reference	Presence	Format	Length
	Location service Protocol discriminator	Protocol discriminator 7.2	M	V	1/2
	Transaction identifier	Transaction identifier 7.3	M	V	1/2
	Register	Message type 7.4	M	V	1
	Facility	Facility 7.5	M	LV	2-?

## 6.5 Release complete

This message is sent by the location measurement unit or the network to release a transaction used for location service control. It may also request or acknowledge a location service (see table 4.5).

**Table 4.5: RELEASE COMPLETE message content**

IEI	Information element	Type / Reference	Presence	Format	Length
	Location service Protocol discriminator	Protocol discriminator 7.2	M	V	1/2
	Transaction identifier	Transaction identifier 7.3	M	V	1/2
	Release Complete Message type	Message type 7.4	M	V	1
10	Cause	Cause 3GPP TS 44.018	O	TLV	4-32
11	Facility	Facility 7.5	O	TLV	2-?

### 6.5.1 Cause

This information element shall be included when the functional handling of the Cause IE is specified in the service description. If the functional handling of the Cause IE is not specified, the receiving entity may ignore the IE. The Cause IE used in location services is defined in 3GPP TS 44.018 in sub-clause 10.5.4.11 (only applicable Cause values are used).

### 6.5.2 Facility

This information element shall be included as required by the service description and the procedures defined in this specification and in 3GPP TS 43.059.

---

## 7 General message format and information elements coding

The figures and text in this clause describe message contents. Within each octet, the bit designated "bit 1" is transmitted first, followed by bits 2, 3, 4, etc. Similarly, the octet shown at the top of each figure is sent first.

### 7.1 Overview

Within the layer 3 protocol defined in this specification, every message is a standard L3 message as defined in 3GPP TS 24.007. This means that the message consists of the following parts:

- a) protocol discriminator;
- b) transaction identifier;
- c) message type;
- d) other information elements, as required.

Unless specified otherwise, a particular information element may be present only once in a given message.

When a field extends over more than one octet, the order of bit values progressively decreases as the octet number increases. The least significant bit of the field is represented by the lowest numbered bit of the highest numbered octet of the field.

## 7.2 Protocol discriminator

The Protocol Discriminator (PD) and its use are defined in 3GPP TS 24.007. This specification defines the protocols relating to the PD values:

1 1 0 0 location services

## 7.3 Transaction identifier

For general rules, format and coding of transaction identifier values, see 3GPP TS 24.008.

## 7.4 Message type

The message type IE and its use are defined in 3GPP TS 24.007. Table 5.1 defines the value part of the message type IE used in the location service protocol.

**Table 5.1: Message types**

8	7	6	5	4	3	2	1	Message types
0	X	1	0	.	.	.	.	Clearing messages: - RELEASE COMPLETE
				0	0	0	1	
0	X	1	1	.	.	.	.	Miscellaneous message group: - FACILITY - REGISTER
				0	0	0	1	
				0	0	1	0	
NOTE 1: Bit 8 is reserved for possible future use as an extension bit, see 3GPP TS 24.007 [3].								
NOTE 2: Bit 7 is reserved for the send sequence number in messages sent from the LMU. In messages sent from the SMLC, bit 7 is coded with a "0", see 3GPP TS 24.007 [3].								

## 7.5 Facility information element

The purpose of the Facility information element is to indicate the invocation and operation of location services, identified by the corresponding operation code within the Facility information element.

The Facility information element is coded as shown in figure 5.1 and clause 8.

The Facility is a type 4 information element with no upper length limit except that given by the maximum number of octets in a L3 message, see 3GPP TS 44.006.

8	7	6	5	4	3	2	1	
Facility IEI								octet 1
Length of Facility contents								octet 2
Component(s) (note)								octet 3 etc.
NOTE: This component contains Transparent LCS Information. Encoding of this component is according to clause 8.								

**Figure 5.1: Facility information element**

## 7.6 Release forbidden

This information element is used only in SMLC to LMU messages. The presence of IE indicates that the release of LCS transaction is not allowed by LMU.

---

## 8 Detailed message format and information elements coding

### 8.1 Transparent LCS Information

This clause provides the formats and encoding of Transparent LCS Information component in the Facility information element. The contents of this component are copied directly from Signal Info (defined in sub-clause 11.1). Encoding methods for the entire LLP component are based on BASIC-PER; unaligned variant is used. Format and encoding of the entire LLP component – part of which can be seen as a subset of ITU-T Recommendation Q.773 - is based on and consistent with the following ITU-T recommendations:

- Abstract Syntax Notation One (ASN.1) “Specification of Basic Notation” ITU-T Rec.X.680 (1997) | ISO/IEC 8824 – 1:1998
- ASN.1 encoding rules “Specification of Packed Encoding Rules (PER)” ITU-T Rec. X.691 (1997) | ISO/IEC 8825-2:1998

NOTE: Concerning the general rules for encoding (structure of encoding, identifier octets, length octets, etc.) see CCITT Recommendations X.680 and ITU-T Recommendation X.691. For these general rules the same exceptions apply as stated in 3GPP TS 29.002. Following ASN.1 definitions are exactly same than in ITU-T Recommendation Q.773.

NOTE: invokeNotLast component is added to the Component list. This change impacts to the coding of the Component type and thus to coding of the LLP messages.

The Component portion of the TCAP used in this protocol, LLP, is a modification of the TCAP Component portion defined in ITU-T Recommendation, Q.773. Even though part of the LLP component can be seen as a subset of TCAP, BER encoding is not used.

```

Component ::= CHOICE {
    invoke                [1] IMPLICIT Invoke,
    returnResultLast     [2] IMPLICIT ReturnResult,
    returnError          [3] IMPLICIT ReturnError,
    reject               [4] IMPLICIT Reject,
    returnResultNotLast  [7] IMPLICIT ReturnResult,
    invokeNotLast        [8] IMPLICIT Invoke }

-- The Components are sequences of data elements.

Invoke ::= SEQUENCE {
    invokeID              InvokeIdType,
    linkedID              [0] IMPLICIT InvokeIdType OPTIONAL,
    operationCode         OPERATION,
    parameter             ANY DEFINED BY operationCode OPTIONAL }

-- ANY is filled by the single ASN.1 data type following the keyword PARAMETER or the keyword
-- ARGUMENT
-- in the type definition of a particular operation.

ReturnResult ::= SEQUENCE {
    invokeID              InvokeIdType,
    result                SEQUENCE {
    operationCode         OPERATION,
    parameter             ANY DEFINED BY operationCode
    } OPTIONAL
    }

-- ANY is filled by the single ASN.1 data type following the keyword RESULT in the type definition
-- of a particular operation.

ReturnError ::= SEQUENCE {
    invokeID              InvokeIdType,
    errorCode             ERROR,
    parameter             ANY DEFINED BY errorCode OPTIONAL }

-- ANY is filled by the single ASN.1 data type following the keyword PARAMETER in the type
-- definition
-- of a particular error.

Reject ::= SEQUENCE {
    invokeID CHOICE {
        derivable          InvokeIdType,
        not-derivable      NULL },
    problem CHOICE {
        generalProblem     [0] IMPLICIT GeneralProblem,
        invokeProblem      [1] IMPLICIT InvokeProblem,
        returnResultProblem [2] IMPLICIT ReturnResultProblem,
        returnErrorProblem [3] IMPLICIT ReturnErrorProblem } }

InvokeIdType ::= INTEGER (-128..127)

```

### 8.1.1 Operation Code

Each Operation is assigned an Operation Code to identify it. The Operation Codes for the different Operations are defined in subclause 9.2.

### 8.1.2 Error Code

Each Error is assigned a value (Error Code) to identify it. The Error Codes for the different Errors are defined in subclause 10.3.

### 8.1.3 Problem Code

The Problem Code consists of one of the four elements: General Problem, Invoke Problem, Return Result Problem or Return Error Problem. ASN.1 definitions are presented below.

```
-- PROBLEMS

GeneralProblem ::= INTEGER {
    unrecognizedComponent (0),
    mistypedComponent (1),
    badlyStructuredComponent (2) }

InvokeProblem ::= INTEGER {
    duplicateInvokeID (0),
    unrecognizedOperation (1),
    mistypedParameter (2),
    resourceLimitation (3),
    initiatingRelease (4),
    unrecognizedLinkedID (5),
    linkedResponseUnexpected (6),
    unexpectedLinkedOperation (7) }

ReturnResultProblem ::= INTEGER {
    unrecognizedInvokeID (0),
    returnResultUnexpected (1),
    mistypedParameter (2) }

ReturnErrorProblem ::= INTEGER {
    unrecognizedInvokeID (0),
    returnErrorUnexpected (1),
    unrecognizedError (2),
    unexpectedError (3),
    mistypedParameter (4) }
```

---

## 9 LMU LCS Protocol operation specifications

### 9.1 General

This clause specifies the abstract syntax for the LMU LCS Protocol using the Abstract Syntax Notation One (ASN.1), defined in CCITT Recommendation X.680 (1997).

The encoding rules which are applicable to the defined abstract syntax are the Packet Encoding Rules for Abstract Syntax Notation One, defined in ITU-T Recommendation X.691. For each Location Service parameter which has to be transferred by a Location Service message, there is a PDU field (an ASN.1 NamedType) whose ASN.1 identifier has the same name as the corresponding parameter, except for the differences required by the ASN.1 notation (blanks between words are removed, the first letter of the first word is lower-case and the first letter of the following words are capitalized (e.g. "bearer service" is mapped to "bearerService")). In addition some words may be abbreviated as follows:

- lmu location measurement unit;
- lcs location services;

The ASN.1 data type which follows the keywords ARGUMENT "PARAMETER" or "RESULT" (for OPERATION and ERROR) is always optional from a syntactic point of view. However, except specific mention, it has to be considered as mandatory from a semantic point of view. When in an invoke component, a mandatory element is missing in any component or inner data structure, a reject component is returned with the problem code "Mistyped Parameter". When an optional element is missing in an invoke component or in an inner data structure while it is required by the context, an error component is returned; the associated type of error is "DataMissing".

In case an element is defined as mandatory in the protocol description (including imports from 3GPP TS 29.002), but is not present according to the service description (stage 1 to stage 3), the ASN.1 protocol description takes precedence over the diagrams in the 3GPP TS 24.08x and 3GPP TS 24.09x-series of technical specifications.

When possible operations and errors are imported from 3GPP TS 29.002.

Timer values for operations which require timers are shown as ASN.1 comments.

Ellipsis Notation shall be used in the same way as described in 3GPP TS 29.002 and shall be supported on the radio interface by the LMU and the network for all operations defined in this specification including those imported from 3GPP TS 29.002.

## 9.2 Operation types

Table 7.1 summarizes the operations defined for LMU LCS Protocol in this specification, and shows which of these operations are Radio Interface Timing (RIT) related and general LMU procedures related. In this ASN.1 module, ASN.1/88 defined in CCITT X.680 recommendations (ASN.1 1997) is used.

**Table 7.1: Relevance of location service operations**

Operation name	Direction	Response allowed	RIT	General LMU
StartRIT	SMLC -> LMU	ReturnResult (empty) .	X	
ReportRIT	LMU -> SMLC	No	X	
StopRIT	SMLC -> LMU	ReturnResult (empty).	X	
IndicateRITError	LMU -> SMLC	No	X	
StatusQuery	SMLC -> LMU	ReturnResult		X
StatusUpdate	LMU -> SMLC	ReturnResult (empty)		X
ResetRequest	SMLC -> LMU	ReturnResult (empty).		X
OMMngrRequest	SMLC -> LMU	ReturnResult		X
OMAgntRequest	LMU -> SMLC	ReturnResult		X

This specification defines the following operations:

- StartRIT
- ReportRIT
- StopRIT
- IndicateRITError
- StatusQuery
- StatusUpdate
- ResetRequest
- OMMngrRequest
- OMAgntRequest



```

-- LLP-Operations module defines the operations transparent to MSC

LLP-Operations
-- { LLP-Operations object identifier }

DEFINITIONS ::=

BEGIN

IMPORTS
    OPERATION
FROM TCAPMessages {
    ccitt recommendation q 773 modules (2) messages (1) version2 (2)}

SystemFailure,
    DataMissing,
    UnexpectedDataValue,
    FacilityNotSupported,
    UnknownSubscriber,
FROM MAP-Errors {
    ccitt identified-organization (4) etsi (0) mobileDomain (0)
    gsm-Network (1) modules (3) map-Errors (10) version4 (4)}

    UndefinedError
FROM LLP-Errors
-- {}

    StartRITReq,
    StartRITRsp,
    ReportRITArg,
    StopRITReq,
    StopRITRsp,
    ErrorRITArg,
    PerformTOAReq,
    TOAResultRsp,
    StatusReq,
    StatusRsp,
    ResetReq,
    ResetRsp,

    StatusUpdateReq,
    StatusUpdateRsp
FROM LLP-DataTypes {
    ccitt identified-organization (4) etsi (0) mobileDomain (0)
    gsm-Network (1) modules (3) map-LCS-DataTypes (n) version4 (4)}

    OMMngrReq,
    OMMngrRsp,
    OMAgntReq,
    OMAgntRsp,
    NACKCauses
FROM LLP-OM-Protocol --{ LLP-OM-Protocol Object identifier }--
;

-- OPERATION definitions based on macro notation

```

```

StartRIT ::= OPERATION          -- identifier StartRIT-Measurement
    ARGUMENT
        startRITReq           StartRITReq
RESULT
        startRITRsp           StartRITRsp
    ERROR {
        SystemFailure,
        DataMissing,
        UnexpectedDataValue,
        ResourcesNotAvailable,
        UndefinedError
    }

```

```

ReportRIT ::= OPERATION        -- identifier ReportRIT-Measurement
    ARGUMENT
        reportRITArg          ReportRITArg

```

<pre> StopRIT ::= OPERATION          -- identifier StopRIT-Measurement   ARGUMENT     stopRITReq      StopRITReq   RESULT     StopRITRsp      StopRITRsp </pre>
<pre> IndicateRITError ::= OPERATION   ARGUMENT     errorRITArg      ErrorRITArg </pre>
<pre> PerformTOA ::= OPERATION      -- identifier PerformTOA-Measurment   ARGUMENT     performTOAReq    PerformTOAReq   RESULT     toaResultRsp     TOAResultRsp   ERROR {     SystemFailure,     DataMissing,     UnexpectedDataValue,     ResourcesNotAvailable,     UndefinedError   } </pre>
<pre> StatusQuery ::= OPERATION   ARGUMENT     statusReq         StatusReq   RESULT     statusRsp         StatusRsp   ERROR {   } </pre>
<pre> ResetRequest ::= OPERATION   ARGUMENT     resetReq          ResetReq   RESULT     resetRsp          ResetRsp   ERROR {     SystemFailure,     UndefinedError   } </pre>
<pre> OMMngrRequest ::= OPERATION    -- defined in LLP-OM, 52.071   ARGUMENT     oMMngrReq         OMMngrReq   RESULT     oMMngrRsp         OMMngrRsp   ERROR   {     NACKCauses   } </pre>
<pre> OMAgntRequest ::= OPERATION    -- defined in LLP-OM, 52.071   ARGUMENT     oMAgntReq         OMAgntReq   RESULT     oMAgntRsp         OMAgntRsp   ERROR   {     NACKCauses   } </pre>
<pre> StatusUpdate ::= OPERATION     -- identifier Status Update   ARGUMENT     statusUpdateReq   StatusUpdateReq   RESULT     statusUpdateRsp   StatusUpdateRsp   ERROR {     SystemFailure,     DataMissing,     UnexpectedDataValue, </pre>

```
ResourceNotAvailable,  
UndefinedError  
}
```

END

## 9.2.1 Operation types description

For each operation type this subclause provides a brief prose description.

### 9.2.1.1 StartRIT (network --> LMU)

This operation type is invoked by the network to request RIT measurement information from an LMU.

### 9.2.1.2 ReportRIT (LMU -->network)

This operation type is invoked by an LMU to report to the network RIT measurement information. This operation is used to report periodical measurements.

### 9.2.1.3 StopRIT (network --> LMU)

This operation type is invoked by the network to request an LMU to stop on-going RIT measurements and reporting.

### 9.2.1.4 IndicateRITError (LMU --> network)

This operation type is invoked by an LMU to indicate error situations.

### 9.2.1.5 Void

### 9.2.1.6 StatusQuery (network --> LMU)

This operation type is invoked by the network to request status an LMU The status is returned using the return result component of the operation.

### 9.2.1.7 StatusUpdate (LMU --> network)

This operation type is invoked by an LMU to report status of LMU, e.g. after reset or periodically.

### 9.2.1.8 ResetRequest (network --> LMU)

This operation type is invoked by the network to reset an LMU.

### 9.2.1.9 OMMngrRequest (network --> LMU)

This operation type is invoked by the network to request a specific O&M activity to LMU as defined in GSM 52.071.

### 9.2.1.10 OMAgntRequest (LMU -> network)

This operation type is invoked by the LMU to report an O&M event to Network or asking for reporting O&M information from Network as defined in GSM 52.071.

## 10.3 Error types

### 10.3.1 Error types ASN.1 specification

The following ASN.1 module provides an ASN.1 specification of errors. Errors from MAP are imported in the LCS-Protocol module in subclause 9.2. In this ASN.1 module, ASN.1/88 defined in CCITT X.680 recommendations (ASN.1 1997) is used.

```
LLP-Errors
-- { LLP-Errors object identifier }

DEFINITIONS ::=

BEGIN

IMPORTS

ERROR FROM
TCAPMessages FROM {
    ccitt recommendation q 773 modules (2) messages (1) version2 (2) }
;

-- The MAP errors

-- error types definition
UnDefinedError ::=ERROR

END
```

### 10.3.2 Error types description

For each error type this subclause provides a brief prose description.

#### 10.3.2.4 SystemFailure

This error is returned by the LMU or the network, when it cannot perform an operation because of a failure.

#### 10.3.2.5 DataMissing

This error is returned by the network or the LMU when an optional parameter is missing in an invoke component or an inner data structure, while it is required by the context of the request.

#### 10.3.2.6 UnexpectedDataValue

This error is returned by the network or the LMU when it receives a parameter with an unexpected value, without type violation.

#### 10.3.2.7 ResourcesNotAvailable

This error is returned by the network or the LMU if temporarily there are no resources.

#### 10.3.2.9 UnDefinedError

This error is returned by the LMU or the network when any other error type is not applicable.

## 10.4 Operations and errors implementation

For the actual implementation of location services, operations and errors have to be defined by value. The following ASN.1 module, imports operation types from the ASN.1 module described in subclause 9.2 and operation and error types from MAP. It defines operations by allocating operations and errors a local value. For the involved operations and errors the same local values as in MAP are allocated. In this ASN.1 module, ASN.1/88 defined in CCITT X.680 recommendations (ASN.1 1997) is used.

```

LLP-Protocol
-- { LLP-Protocol object identifier }

DEFINITIONS ::=

BEGIN

IMPORTS

SystemFailure,
  DataMissing,
  UnexpectedDataValue,
  FacilityNotSupported,
  UnknownSubscriber,
FROM MAP-Errors {
  ccitt identified-organization (4) etsi (0) mobileDomain (0)
  gsm-Network (1) modules (3) map-Errors (10) version4 (4)}

  UndefinedError
FROM LLP-Errors
-- { LLP-Errors object identifier }

StartRIT,
  ReportRIT,
  StopRIT,
IndicateRITError,
  PerformTOA,
  StatusQuery,
  ResetRequest,
  OMRequest,
  OMReport,
  StatusUpdate
FROM -LLP-Operations
-- { LLP-Operations object identifier }
-- allocate local values for errors

systemFailure   SystemFailure ::= localValue 10
dataMissing     DataMissing   ::= localValue 11
unexpectedDataValue UnexpectedDataValue ::= localValue 12
facilityNotSupported FacilityNotSupported ::= localValue 13
unknownSubscriber UnknownSubscriber ::= localValue 14
undefinedError  UndefinedError ::= localValue 50

startRIT        StartRIT ::= localValue 10
reportRIT       ReportRIT ::= localValue 11
stopRIT         StopRIT ::= localValue 12
indicateRITError IndicateRITError ::= localValue 13
performTOA      PerformTOA ::= localValue 20
statusQuery     statusQuery ::= localValue 30
resetRequest    ResetRequest ::= localValue 31
omMngrRequest   OMMngrRequest ::= LocalValue 32
omAgntRequest   OMAgntRequest ::= LocalValue 33
statusUpdate    StatusUpdate ::= LocalValue 34

END

```

# 11 LMU LCS Protocol (LLP) messages

## 11.1 Messages, data types and identifiers

### 11.1.1 General

This clause defines the External Signal Info IE, that contains Signal Info string. Signal Info string contains the MLC-LMU messages defined by ASN.1 and coded by PER (X.691). In this ASN.1 module, ASN.1/94 defined in ITU-T X.680 recommendations (ASN.1 1997) is used.

### 11.1.2 ASN.1 data types

```

LLP-DataTypes
-- { LLP-DataTypes object identifier }

DEFINITIONS AUTOMATIC TAGS ::=

BEGIN

IMPORTS

ExtensionContainer

FROM MAP-ExtensionDataTypes {
    ccitt identified-organization (4) etsi (0) mobileDomain (0)
    gsm-Network (1) modules (3) map-ExtensionDataTypes (21) version4 (4)}
;

StartRITReq ::= SEQUENCE {
    rit-MeasurementType    RIT-MeasurementType,

    rit-ReportingType      RIT-ReportingType,

    rit-Environment        RIT-Environment,
    rit-NeighborNumber     RIT-NeighborNumber,
    rit-NeighborType       RIT-NeighborType,
    rit-CIMethod            CIMethod,
    rit-BTSInfo             RIT-BTSInfo          OPTIONAL,
    extensionContainer      ExtensionContainer  OPTIONAL,
    ...
}
StartRITRsp ::= SEQUENCE {
    extensionContainer      ExtensionContainer  OPTIONAL,
    ...
}

StopRITReq ::= SEQUENCE {
    extensionContainer      ExtensionContainer  OPTIONAL,
    ...
}

StopRITRsp ::= SEQUENCE {
    extensionContainer      ExtensionContainer  OPTIONAL,
    ...
}

ReportRITArg ::= SEQUENCE {
    rit-ReferenceIDInfo    RIT-ReferenceIDInfo,
    rit-ResponseInfo       SeqOfRIT-ResponseInfo,
    extensionContainer      ExtensionContainer  OPTIONAL,
    ...
}

StatusReq ::= SEQUENCE {
    extensionContainer      ExtensionContainer  OPTIONAL,
    ...
}

StatusRsp ::= SEQUENCE {
    statusTime              StatusTime,

```

```

    rit-Status          RIT-Status,
    toa-Status          TOA-Status,
    omStatus            OMStatus,
    extensionContainer  ExtensionContainer OPTIONAL,
    ...
}

ErrorRITArg ::= SEQUENCE {
    rit-ErrorType      RIT-ErrorType,
    rit-ErrorReason    RIT-ErrorReason,
    extensionContainer  ExtensionContainer OPTIONAL,
    ...
}

PerformTOA ::= SEQUENCE {
    toa-MeasurementDeviceInfo  TOA-MeasurementDeviceInfo,
    toa-ChannelDescr          TOA-ChannelDescr,
    toa-SignalDescr           TOA-SignalDescr,
    toa-TimingDescr           TOA-TimingDescr,
    toa-MeasurementOpt        TOA-MeasurementOpt OPTIONAL,
    extensionContainer         ExtensionContainer OPTIONAL,
    ...
}

TOAResultRsp ::= SEQUENCE {
    toa-TimingReferenceInfo    TOA-TimingReferenceInfo,
    toa-Measurements           TOA-MeasurementInfo,
    extensionContainer         ExtensionContainer OPTIONAL,
    ...
}

StatusUpdateReq ::= SEQUENCE {
    statusReason              StatusReason,
    statusTime                StatusTime,
    ritStatus                 RIT-Status,
    toaStatus                 TOA-Status,
    omStatus                  OMStatus,
    extensionContainer         ExtensionContainer OPTIONAL,
    ...
}

StatusUpdateRsp ::= SEQUENCE {
    extensionContainer         ExtensionContainer OPTIONAL,
    ...
}

ResetReq ::= SEQUENCE {
    extensionContainer         ExtensionContainer OPTIONAL,
    ...
}

ResetRsp ::= SEQUENCE {
    extensionContainer         ExtensionContainer OPTIONAL,
    ...
}

-- DATA TYPES DEFINITION

-- RIT measurement Type information
RIT-MeasurementType ::= INTEGER {
    atdMeasure (0),
    atdOrOtdMeasure (1),
    rtdMeasure (2)
} (0..7)

-- RIT Reporting Type information
RIT-ReportingType ::= SEQUENCE {
    rit-ReportingPeriodInfo    RIT-ReportingPeriodInfo    OPTIONAL,
    rit-ChangeLimit            INTEGER (1..255)            OPTIONAL,
}

```

```

    rit-DeviationLimit          INTEGER (1..255)          OPTIONAL,
    rit-MonitorPeriod          INTEGER (1..64)           OPTIONAL
  }

RIT-ReportingPeriodInfo ::= SEQUENCE {
    rit-ReportingPeriodFormat  ENUMERATED {
        tensOfSeconds (0),
        tensOfMinutes (1) },
    rit-ReportingPeriod        INTEGER (1..120)
  }

-- RIT Environment Information
RIT-Environment ::= INTEGER {
    heavyMultiPathAndNLOS (0),
    -- bad urban or urban heavy multipath and NLOS conditions
    lightMultiPathAndLOS (1),
    -- suburban or rural lighth multipath and LOS conditions
    mixedEnvironement (2)
    -- not defined or mixed environment
  } (0..7)

RIT-NighborNumber ::= INTEGER (0..15)

RIT-NighborType ::= INTEGER {
    listedNeighbors (0),
    listedAndSystemInfo2or5 (1),
    systemInfoType2or5 (2),
    allNeighbors (3)
  } (0..7)

CIMethod ::= INTEGER {
    notCi (0), -- report ci and carrier instead of CI
    ci (1)    -- report CI if possible
  } (0..3)

-- element contains information of base stations
-- to be measured
RIT-BTSInfo ::= SEQUENCE (SIZE(1..31)) OF RIT-BTSList -- list of btss

RIT-BTSList ::= SEQUENCE {
    rit-ListCi          CI,
    rit-TimeSlotScheme TimeSlotScheme,
    rit-ListBSIC        BSIC,
    rit-ListBCCHCarrier BCCHCarrier
  }

CI ::= INTEGER (0..65535)

TimeSlotScheme ::= INTEGER {
    schemeUnknown (0),
    equalLength (1), -- time slots are equal length
    variousLength (2) -- the first time slot is 157b } (0..7)

BSIC ::= INTEGER (0..63)

BCCHCarrier ::= INTEGER (0..1023)

RIT-ReferenceIDInfo ::= SEQUENCE {
    rit-ReferenceLAC          LAC, -- defined earlier
    rit-ReferenceCI           CI, -- defined earlier
    rit-ReferenceFrameNbr     FrameNumber, -- defined earlier

    -- If rit-ATReference is absent then there is not RIT AT refernce value.
    rit-ATReference          RIT-ATReference OPTIONAL,

    rit-ReferenceTimeSlot     TimeSlot, -- defined earlier
    rit-ReferenceRXLevel      RXLevel, -- defined earlier

    rit-ATDRTDQualityRes     INTEGER (0..3), -- defines the resolution for ATDRTD values

```



```

    rit-ATDRTDChangeQualityRes  INTEGER (0..3) -- defines the resolution for ATDRTD change values
}

RIT-ATReference ::= SEQUENCE {
    rit-CommonClock             CommonClock,
    rit-ReferenceATValue        ReferenceATValue,
    -- This Quality information defines the quality of AT value
    -- Resolution defines the resolution of Quality field as follows,
    -- 0= 0.005 us, 1= 0.01 us, 2= 0.05 us
    rit-RefATQuality            SEQUENCE {
                                resolution      INTEGER (0..3),
                                atQuality       INTEGER (0..63) },

    rit-ReferenceATChange       INTEGER (-1000 .. 1000),

    -- This Quality information defines the quality of ATChange value
    -- Resolution defines the resolution of Quality field as follows,
    -- 0= 0.00005 ppm, 1= 0.0001 ppm, 2= 0.0005
    rit-RefATChangeQuality      SEQUENCE {
                                resolution      INTEGER (0..3),
                                atChangeQuality INTEGER (0..63) }
}

-- Editor's note: ReferenceATValue was divided in two parts because 15 999 999 999 requires 34 bits.
-- In order to handle 34-bits values, LMU should support 64-bits calculation, which can cause
problems.
-- This solution can be handled with 32-bits and in addition it gives better resolution.
ReferenceATValue ::= SEQUENCE {
    seconds      INTEGER (0..59),
    nsecs       INTEGER (0..999999999)
}

SeqOfRIT-ResponseInfo ::= SEQUENCE (SIZE (1..15)) OF RIT-ResponseInfo

-- Measured RTD values from one neighbor
RIT-ResponseInfo ::= SEQUENCE {
    rit-NeighborCellIDInfo      RIT-CellIDInfo,
    rit-NeighborTimeSlot        TimeSlot,
    rit-NeighborRxLevel         RXLevel,
    rit-NeighborFrameNumber     FrameNumber          OPTIONAL,

    rit-NeighborATDRTD          INTEGER (0..923200),
    rit-NeighborATDRTDQuality    INTEGER (0..63),
    rit-NeighborATDRTDChange     INTEGER (-2000..2000),
    rit-NeighborATDRTDChangeQuality INTEGER (0..63)
}

RIT-CellIDInfo ::= CHOICE {
    rit-NeighborCI      CI,
    rit-NeighborBTS     RIT-NeighborBTS
}

RIT-NeighborBTS ::= SEQUENCE {
    rit-NeighborBSIC      BSIC,
    rit-NeighborBCCHCarrier BCCHCarrier
}

FrameNumber ::= INTEGER (0..2715647)

LAC ::= INTEGER (0..65535)

CommonClock ::= INTEGER {
    gpsClock      (0),
    glonass       (1)
} (0..7)

TimeSlot ::= INTEGER (0..7)

RXLevel ::= INTEGER (0..63) -- range -150 to -24 with 2dBm steps

```

```

-- STATUS ELEMENTS

StatusReason ::= ENUMERATED {
    powerUp (0),           -- no knowledge about previous states
    unsucSWReset (1),     -- unsuccessful recovery
    sucSWReset (2),       -- successful recovery
    unknownError (3),     -- unknown selfdiagnosis error
    unreliTBEError (4),   -- unreliable timebase error
    periodicReport (5),   -- periodic status report
    ...
}

StatusTime ::= SEQUENCE {
    referenceLAC           LAC,           -- defined earlier
    referenceCI            CI,           -- defined earlier
    referenceFrameNumber   FrameNumber -- defined earlier
}

RIT-Status ::= INTEGER (0..63) -- defines the number of RIT-Jobs

TOA-Status ::= INTEGER (0..63) -- defines the number of TOA-Jobs

OMStatus ::= INTEGER (0..63) -- defines the number of OM-Jobs

-- ERROR RIT ELEMENTS

RIT-ErrorType ::= INTEGER {
    permanent (0),
    temporary (1)
} (0..3)

RIT-ErrorReason ::= INTEGER {
    noNeighbors (0),
    noReferenceClock (1),
    notSupportedType (2),
    undefinedError (3)
} (0..15)

-- TOA DEFINITIONS

-- MEASUREMENTDEVICE INFORMATION
TOA-MeasurementDeviceInfo ::= SEQUENCE
(SIZE(1..6)) OF TOA-LMUMeasurementDevice -- list of measurement devices

TOA-LMUMeasurementDevice ::= INTEGER (0..5)

-- CHANNEL DESCRIPTION
TOA-ChannelDescr ::= SEQUENCE {
    toa-FrequencyListType TOA-FrequencyListType,
    toa-hopping             TOA-Hopping             OPTIONAL,
    toa-channelType        TOA-ChannelType,
    toa-numberOfBursts     TOA-NumberOfBurst
}

TOA-FrequencyListType ::= CHOICE {
    frequencyListOnly      FrequencyListOnly,
    frequencyListAndIndex FrequencyListAndIndex,
    frequencyIndexOnly     FrequencyIndexOnly
}

FrequencyListOnly ::= SEQUENCE (SIZE(1..64)) OF TOA-ARFCNumber -- list of channels

FrequencyListAndIndex ::= SEQUENCE {
    toa-arfcnList          TOA-ARFCList,
    -- list of channels
    frequencyIndex        FrequencyIndex
}

TOA-ARFCList ::= SEQUENCE (SIZE(1..64)) OF TOA-ARFCNumber

FrequencyIndexOnly ::= SEQUENCE {

```

```

    frequencyIndex          FrequencyIndex
}

FrequencyIndex ::= INTEGER (0..31)

TOA-ARFCNumber ::= BCCHCarrier -- defined earlier

TOA-Hopping ::= SEQUENCE {
    toa-maio                MAIO,
    toa-hsn                 HSN,
    toa-MsframeNumber      ModuloFrameNumber
}

MAIO ::= INTEGER (0..63) -- Mobile Allocation Index Offset

HSN ::= INTEGER (0..63) -- Hopping Sequence Number

ModuloFrameNumber ::= INTEGER (0..84863)

TOA-ChannelType ::= INTEGER {
    tchf(0),
    tchhscn0(1),
    tchhscn1(2)
} (0..7)

TOA-NumberOfBurst ::= INTEGER (0..7)

-- SIGNAL DESCRIPTION
TOA-SignalDescr ::= SEQUENCE {
    toa-BurstType          TOA-BurstType
}

TOA-BurstType ::= CHOICE {
    toa-AccessBurst      TOA-AccessBurst,    -- access burst
    toa-TSC              TSC                 -- normal burst
}

TOA-AccessBurst ::= SEQUENCE {
    toa-HOReference      HOReference,
    toa-BSIC             BSIC                -- defined earlier
}

HOReference ::= INTEGER (0..255)

TSC ::= INTEGER (0..7)

-- TIMING DESCRIPTION
TOA-TimingDescr ::= SEQUENCE {
    toa-TimeReference    TOA-TimeReference,
    toa-timeUncertainty  TimeUncertainty
}

TOA-TimeReference ::= CHOICE {
    toa-gpsTime          TOA-GPSTime,
    toa-gsmStartTime    TOA-GSMStartTime
}

TOA-GPSTime ::= SEQUENCE {
    toa-GPSStartTime    GPSTime,
    toa-GPSSV           GPSSV
}

GPSTime ::= INTEGER (0..14999999) -- unit is microseconds

GPSSV ::= INTEGER (0..31)

TOA-GSMStartTime ::= SEQUENCE {
    toa-arfcn           BCCHCarrier,    -- defined earlier
    toa-bsic            BSIC,          -- defined earlier
    toa-GSMStartTime    GSMTIME
}

GSMTIME ::= SEQUENCE {
    toa-GSMTimeframeNumber  GSMTIMEFrameNumber,

```

```

    toa-timeSlot          TimeSlot,
    toa-bitNumber        BitNumber
}

GSMTIMEFRAMENUMBER ::= INTEGER (0..42323)

BITNUMBER ::= INTEGER (0..156)

TIMEUNCERTAINTY ::= INTEGER (0..15)

-- MEASUREMENT OPTIONS

TOA-MeasurementOpt ::= SEQUENCE {
    toa-LMUMethod      TOA-Method,
    toa-Environment    TOA-Environment,
    toa-MeasurementType TOA-MeasurementType
}

TOA-Method ::= INTEGER (0..7)

TOA-Environment ::= INTEGER {
    heavyMpathAndNLOS (0),
    lightMpathAndLOS (1),
    mixed (2)
} (0..7)

TOA-MeasurementType ::= INTEGER {
    reportTOA-only (0),
    reportAOA-only (1),
    reportTOAandAOA (2)
} (0..3)

-- TIMING INFO

TOA-TimingReferenceInfo ::= CHOICE {
    toa-GPSTimeInfo      NULL,
    toa-GSMTIMEInfo     TOA-GSMTIMEInfo
}

TOA-GSMTIMEInfo ::= SEQUENCE {
    toa-bcch             BCCHCarrier,    -- defined earlier
    toa-bsic             BSIC            -- defined earlier
}

-- THE ACTUAL TOA MEASUREMENTS

TOA-MeasurementInfo ::= SEQUENCE(SIZE(1..6)) OF TOA-Measurements
-- list of measurementDevices

TOA-Measurements ::= SEQUENCE {
    toa-MeasurementDeviceID MeasurementDeviceID,
    toa-AddMeasurementInfo  TOA-AddMeasurementInfo,
    toa-measuredPeakList    TOA-MeasuredPeakList
}

-- MEASUREMENT DEVICE ID IE

MeasurementDeviceID ::= INTEGER (0..5)

-- MEASUREMENT INFO IE IN RESULT MESSAGE

TOA-AddMeasurementInfo ::= SEQUENCE {
    toa-Method            TOA-Method,          -- defined earlier
    toa-Diversity         TOA-Diversity,
    toa-NumberOfBurst     TOA-NumberOfBurst,  -- defined earlier
    toa-AOA               TOA-AOA            OPTIONAL,
    toa-AOAUncertainty    TOA-AOAUncertainty OPTIONAL
}

TOA-Diversity ::= INTEGER {
    noDiversity (0),
    diversity (1)
} (0..3)

TOA-AOA ::= INTEGER (0..3599)

```

```

TOA-AOAUncertainty ::= INTEGER (0..31)

-- PEAKS LIST OF MEASURED TOAs

TOA-MeasuredPeakList ::= SEQUENCE (SIZE(0..4)) OF TOA-MeasuredPeaks
-- list of peaks

-- MEASURED TOA IE

TOA-MeasuredPeaks ::= SEQUENCE {
    toa-MeasuredTOA      MeasuredTOA,
    toa-QualityInfo      TOA-QualityInfo
}

MeasuredTOA ::= INTEGER (-131072..131071)
-- the absolute TOA value

TOA-QualityInfo ::= SEQUENCE {
    toa-Uncertainty      TOA-Uncertainty      OPTIONAL,
    snrEstimate          SNREstimate          OPTIONAL,
    toaSignalStrength    TOASignalStrength    OPTIONAL
}

TOA-Uncertainty ::= INTEGER (0..63)
-- the uncertainty of the TOA estimate

SNREstimate ::= INTEGER (-30..33)
-- the estimated value for Signal Noise Ratio

TOASignalStrength ::= INTEGER (0..63)
-- range -150 to -24 with 2dBm steps

END

-- The definition below will be imported from MAP specification.
--
--
-- MAP-ExtensionDataTypes {
--   ccitt identified-organization (4) etsi (0) mobileDomain (0)
--   gsm-Network (1) modules (3) map-ExtensionDataTypes (21) version4 (4)}
--
-- DEFINITIONS
--
-- IMPLICIT TAGS
--
-- ::=
--
-- BEGIN
--
-- EXPORTS
--
--   PrivateExtension,
--   ExtensionContainer;
--
--
-- MAP-EXTENSION ::= CLASS {
--   &ExtensionType      OPTIONAL,
--   &extensionId        OBJECT IDENTIFIER }
-- -- The length of the Object Identifier shall not exceed 16 octets and the
-- -- number of components of the Object Identifier shall not exceed 16
--
--
-- data types
--
-- ExtensionContainer ::= SEQUENCE {
--   privateExtensionList [0]PrivateExtensionList OPTIONAL,
--   pcs-Extensions [1]PCS-Extensions OPTIONAL,
--   ...}
--
-- PrivateExtensionList ::= SEQUENCE SIZE (1..maxNumOfPrivateExtensions) OF
--   PrivateExtension
--
-- PrivateExtension ::= SEQUENCE {
--   extId      MAP-EXTENSION.&extensionId

```

```
--      ({ExtensionSet}),
--
--  extType      MAP-EXTENSION.&ExtensionType
--      ({ExtensionSet}{@extId})  OPTIONAL}
--
--  maxNumOfPrivateExtensions  INTEGER ::= 10
--
--  ExtensionSet      MAP-EXTENSION ::=
--      {...
--      -- ExtensionSet is the set of all defined private extensions
--      }
--
--  Unsupported private extensions shall be discarded if received.
--
--
--  PCS-Extensions ::= SEQUENCE {
--      ...}
--
--  END
```

### 11.1.3 Identifiers definition

In the informative annexes the contents of the identifiers used in operation and error types description are further discussed.

## Annex A (informative): RIT messages

### A.1 Introduction

This annex describes the contents of Radio Interface Timing (RIT) related messages.

### A.2 Messages

The messages below are considered to be transported between the SMLC and the LMU.

#### A.2.1 RIT Measurement Request Message

The RIT Measurement Request is a message from the SMLC to the LMU. As a response to it the LMU performs Real Time Difference (RTD) or Absolute Time Difference (ATD) measurements. It contains the following information elements.

**Table A.1: RIT Measurement Request message content**

Information element	Type/Reference	Presence
Message Type	Message Type A.2.1.1.1	M
Measurement Instructions	Measurement Instructions A.2.1.1.2	M
BTS List	BTS List A.2.1.1.3	C

#### A.2.1.1 RIT Measurement Request Message Information Elements

##### A.2.1.1.1 Message Type IE

This IE contains the type of the message. This IE is mandatory.

##### A.2.1.1.2 Measurement Instructions IE

The purpose of the Measurement Instructions IE is to inform the LMU about the measurement type (RTD/ATD), measurement result reporting rate, and tell which BTSs should be measured. This IE is mandatory, and it contains the following fields:

###### Measurement Type

This field indicates whether AT of reference BTS is required.

'0': AT of reference BTS should be reported. If AT of reference BTS can not be measured, no ATD/RTD measurements are reported, but RIT Error IE is sent instead.

'1': AT of reference BTS should be reported . If AT of reference BTS can not be measured, ATD/RTD measurements are reported anyhow.

'2': ATD/RTD measurements timestamped with frame number of the reference BTS should be performed.

###### Reporting Period Format

This field describes the units of the Reporting Period field. This field is optional. If this field is included, RIT Measurement Responses shall be send with the period indicated in this and Reporting Period fields.

'0': Reporting Period is told in tens of seconds.

'1': Reporting Period is in tens of minutes.

#### Reporting Period

This field describes the value for the reporting period, i.e. the required time period between the RIT Measurement Response messages. Its units and multiplication factor are defined in the Reporting Period Format field. This field is conditional and included only if the Reporting Period Format is included.

Range: 1-120

#### Change Limit

This field indicates the limit for the change of AT or ATD /RTD values in units of 0.02 micro-seconds. If any AT or ATD/RTD value has changed more than the value in this field since the last RIT Measurement Response, a new RIT Measurement Response message is sent. This field is optional. If this field is included, RIT Measurement Responses shall be send when some RIT value has changed more than this limit.

Range: 1-255

#### Deviation Limit

This field indicates the limit for the deviation of the AT or ATD/RTD values. If any time the predicted AT or ATD/RTD value (based on reported AT or ATD/RTD values and changes in the last RIT Measurement Response) has deviated more than the value in this field compared to the current measurement result, a new RIT Measurement Response message is sent. This field is optional. If this field is included, RIT Measurement Responses shall be send when the first deviation of some RIT value is more than this limit. The values are in units of 0.02 micro-seconds.

Range: 1-255

NOTE: Predicted AT or ATD/RTD value means the value that is calculated (extrapolated) based on AT or ATD/RTD value and AT or ATD/RTD Change value in last RIT Measurement Response message.

#### Monitor Period

This field indicates the requested time period for monitoring the time derivative of AT or ATD/RTD values, i.e. on how long monitor period the reported AT or ATD/RTD change is based. The value is in tens of seconds. This field is optional

Range: 1- 64

#### Environment Characterization

Environment Characterization field gives a LMU information about expected multipath and NLOS in the area.

'0': possibly heavy multipath and NLOS conditions (e.g. bad urban or urban)

'1': no or light multipath and usually LOS conditions (e.g. suburban or rural)

'2': not defined or mixed environment

'3': reserved

'4': reserved (i.e. several values should be reserved)

#### Neighbor Number

This field indicates the maximum number of neighbor BTSs that the LMU should try to report.

Range: 0-15



## Neighbor Type

This field indicates which neighbor BTSs are used for RIT measurements. If the value of the Neighbor Number field is lower than the total number of BTSs in the required list, then the BTS are selected in the order of the list.

'0': Neighbor BTSs listed in the BTS List IE are used for RIT measurements in the order of the list.

'1': If possible, neighbor BTSs listed in the BTS List IE are used, otherwise neighbors received in SYSTEM INFORMATION 2 or 5 message are used in the order of received signal strength.

'2': Neighbor BTSs indicated in SYSTEM INFORMATION TYPE 2 or 5 are used for RIT measurements (i.e. this is normal operation) in the order of received signal strength.

'3': All neighbor BTSs that can be received (i.e. reported BTSs are not limited to BTSs listed in SYSTEM INFORMATION TYPE 2 or 5 or BTS List IE). Support of this option in LMU is optional.

## CellIdMethod

CellIdMethod field indicates whether CI or BSIC and BCCH carrier is used to identify neighbor BTSs in RIT Measurement Responses.

'0' = BSIC and BCCH carrier are used to identify the cell, even if CI is available.

'1' = CI is used to identify the neighbor cell, if it is available, otherwise BSIC and BCCH carrier are used.

### A.2.1.1.3 BTS List IE

This information element indicates neighbor BTSs that are used for RIT measurements. This IE is conditional. If Neighbor Type field in the Measurement Instructions IE is '0' or '1' this field must be included. The first BTS on the list is the reference BTS that should be used as reference when reporting the RTD or AT values. If this reference BTS is not available, the LMU can select the used reference BTS based on signal strength.

This IE contains the following fields.

#### Number of BTSs

This field indicates, how many BTSs are included in this IE.

Range: 1 to 31.

The following fields are repeated the number of times included in Number of BTSs field.

#### CI

This field indicates the Cell Identity of the particular BTS. The purpose of the Cell Identity value is to identify a BTS within a location area.

Range: 0 - 65535

**NOTE:** Here is assumed that when LMU starts to make measurements, it firsts goes to the requested frequencies, and starts to decode BSICs and CIs from those specific frequencies. Because of this procedure the risk that there would be two BTSs with same CIs and same Channel numbers is minimal (i.e. there is no need to transmit LAC).

#### Time Slot Scheme

The Time Slot Scheme field indicates what kind of transmission scheme the particular BTS is using. If the LMU measures signals from BTSs from other time slots than 0 or 4, and it is informed about the burst length schemes used by BTSs, then it can compensate for the possible error. (This is necessary if the LMU averages bursts from different time slots, and the BTS uses varying lengths of bursts.)

'0' = the burst scheme is unknown (The time slot should remain the same)

'1' = all time slots are 156.25 bits long

'2' = time slots 0 and 4 are 157 bits long and other time slots are 156 bits long

## BSIC

This field indicates the BSIC (Base Station Identity Code) of the particular BTS.

Range: 0 - 63

## BCCH Carrier

This field indicates the absolute RF channel number of the particular BTS.

Range: 0 - 1023

## A.2.2 RIT Measurement Response Message

The RIT Measurement Response is a message from the LMU to the SMLC. It is the response to the RIT Measurement Request. It contains the following information elements.

**Table A.2: RIT Measurement Response message content**

Information element	Type/Reference	Presence
Message Type	Message Type A.2.2.1.1	M
RIT Measurement	RIT Measurement A.2.2.1.2	M

### A.2.2.1 RIT Measurement Response Message Information Elements

#### A.2.2.1.1 Message type IE

This IE contains the type of the message. This IE is mandatory.

#### A.2.2.1.2 RIT Measurement IE

This IE includes the required RIT measurements. The length of this IE depends on the number of measured neighbor BTSs. This IE is mandatory.

#### Reference LAC

This field indicates the Location Area Code of the reference BTS. The purpose of the Location Area Code is to identify a location area.

Range: 0 - 65535

#### Reference CI

This field indicates the Cell Identity value of the reference BTS. The purpose of the Cell Identity value is to identify a cell within a location area.

Range: 0 - 65535

#### Reference Frame Number

This field indicates the frame number of the last measured burst from the reference BTS.

Range: 0 - 2715647

#### Response Type

This field indicates whether AT of reference BTS is reported or not.

'0': AT of reference BTS is not reported

'1': AT of reference BTS is reported

#### Common Clock

This field indicates the type of the common reference clock for AT measurement. This field is included only if the Response Type field is '1'.

'0': GPS clock is used.

'1': Reserved for future use (e.g. Synchronized atomic clocks, or GLONASS)

#### Reference AT

This field indicates the measured AT value for the serving BTS. It is the starting moment of a time slot. It is counted in two parts: seconds after last minute change, and nanoseconds after last second change. This field is included only if the Response Type field is '1'.

Range:

seconds: 0-59

nanoseconds: 0-999,999,999

#### Reference AT Quality Resolution

Reference AT Quality Resolution field includes the resolution used in Reference AT Quality field. Encoding on 2 bits as follows

'00'            0.005 micro seconds

'01'            0.01 micro seconds

'10'            0.05 micro seconds

'11'            Reserved.

This field is included only if the Response Type field is '1'.

#### Reference AT Quality

Reference AT Quality field includes the quality of reported RIT measurement. This Reference AT Quality field can be e.g. used to evaluate the reliability of AT measurements in the SMLC. Reference AT quality is defined as

Reference AT Quality =  $\sqrt{E[(x - \mu)^2]}$  = Std of reported AT value,

where  $x$  is the reported Reference AT value and  $\mu = E[x]$  is its expectation value. The reporting resolution of Reference AT Quality is defined by Reference AT Quality resolution field.

Range: 0 to 63

Value 63 means that Reference AT Quality is greater than or equal to  $R \cdot 63$ , where  $R$  is the resolution defined in Reference AT Quality Resolution field.

This field is included only if the Response Type field is '1'.

#### Reference AT Change

This field indicates the first time derivative of the AT value for the reference BTS. This value is based on measurements made during Monitor Period, if the monitoring period is provided. Otherwise it is the best estimate of AT Change value at the time of last AT measurement. This field is conditional and included if Response Type field is '1'. The range is -0.05 ... 0.05 ppm and resolution is 0,00005 ppm.

Range: -1000 ... 1000

#### Reference AT Change Quality Resolution

Reference AT Change Quality Resolution field includes the resolution used in Reference AT Change Quality field. Encoding on 2 bits as follows

'00'	0.00005 ppm
'01'	0.0001 ppm
'10'	0.0005 ppm
'11'	Reserved.

This field is conditional and included if the Response Type field is '1'.

#### Reference AT Change Quality

Reference AT Change Quality field includes the quality of reported Reference AT Change. This Reference AT Change Quality field can be e.g. used to evaluate the reliability of RIT measurements in the SMLC. Reference AT Change Quality is defined as

$$\text{Reference AT Change Quality} = \sqrt{E[(x - \mu)^2]} = \text{Std of reported AT Change value}$$

where  $x$  is the reported Reference AT Change and  $\mu = E[x]$  is its expectation value. The reporting resolution of Reference AT Change Quality is defined by Reference AT Change Quality Resolution field.

Range: 0 to 63

This field is conditional and included if the Response Type field is '1'.

#### Reference Time Slot

Reference Time Slot indicates the time slot relative to which the LMU reports the reference BTS measurements. This field is mandatory.

Range: 0 to 7

NOTE: If the LMU does not know timeslot scheme, the LMU reports the used timeslot. The LMU can only report results based on one time slot (N) or two time slots (N and N+4). If the LMU knows timeslot scheme, the LMU can make measurements from several timeslots and reports that the used timeslot is zero (and makes correction).

#### Reference RX Level

RX Level field includes the received signal strength of the reference BTS.

The RX Level is expressed in 2 dBm steps within the range -150 .. -24 dBm.

Range: 0 .. 63

#### ATD/RTD Quality Resolution

ATD/RTD Quality Resolution field includes the resolution used in ATD/RTD Quality field. Encoding on 2 bits as follows

'00'	0.005 micro seconds
'01'	0.01 micro seconds
'10'	0.05 micro seconds

'11' Reserved.

This field is mandatory.

#### ATD/RTD Change Quality Resolution

ATD/RTD Change Quality Resolution field includes the resolution used in ATD/RTD Change Quality field. Encoding on 2 bits as follows

'00' 0.00005 ppm

'01' 0.0001 ppm

'10' 0.0005 ppm

'11' Reserved.

This field is mandatory.

#### Number of Measured Neighbors

This field indicates the number of different neighbor BTSs.

NOTE: If the LMU can not measure any neighbor BTSs, then this value is set to '0'.

Range: 0 – 15

*The following fields are repeated the number of times included in Number of Measured Neighbors field.*

#### CellIdType

This field indicates is the identity method of the cell.

'0' = Cell identity is told using BSIC and BCCH carrier.

'1' = Cell identity is told using CI.

#### Neighbor CI

This field indicates the Cell Identity of the particular neighbor cell. The purpose of the Cell Identity value is to identify a cell within a location area.

Neighbor CI field is a conditional field and it is included only if CellIdType is set '1' and CI value of the given cell is available.

Range: 0 - 65535

#### Neighbor BSIC

This field indicates the BSIC (Base Station Identity Code of the base station).

BSIC field is conditional and it is included only if CellIdType is set '0'.

Range: 0 - 63

#### Neighbor BCCH Carrier

This field indicates the absolute RF channel number of the neighbor base station. BCCH carrier field is conditional and it is included only if CellIdType is set '0'.

Range: 0 - 1023

### Neighbor RX Level

RX Level field includes the received signal strength on the neighbor BTS.

The RX Level is expressed in 2 dBm steps within the range -150 .. -24 dBm.

Range: 0 .. 63

### Neighbor Frame Number

This field indicates the calculated value of the neighbor BTS's frame that would have been received at the same time or immediately after as the last measured frame from the reference BTS. This field is optional.

Range: 0 - 2715647

### Neighbor Time Slot

Neighbor Time Slot indicates the time slot relative to which the LMU reports the serving BTS measurements. This field is mandatory.

Range: 0 to 7

NOTE: If the LMU does not know timeslot scheme, the LMU reports the used timeslot. The LMU can only report results based on one time slot (N) or two time slots (N and N+4). If the LMU knows timeslot scheme, the LMU can make measurements from several timeslots and reports that the used timeslot is zero (and makes correction).

### ATD/RTD Value

This field indicates the measured ATD/RTD value between the receptions of signals from the reference and the neighbor BTS. This ATD/RTD value is the difference in reception of signal (the starting moment of time slot) from reference BTS compared to the signal (next starting moment of a time slot) from the neighbor BTS (i.e. this value is always positive). This field is mandatory. The reporting resolution of ATD/RTD value is 0.005 microseconds.

Range: 0 ... 923200

NOTE: The reported ATD/RTD value may be based on some filtering or estimation algorithm. I.e. the reported value is not the last measurement result, it is the best estimate of real RTD value at the time of last measurement.

### ATD/RTD Quality

ATD/RTD Quality field includes the quality of reported RIT measurement. This ATD/RTD Quality field can be e.g. used to evaluate the reliability of RIT measurements in the SMLC. ATD/RTD quality is defined as

$$\text{ATD/RTD Quality} = \sqrt{E[(x - \mu)^2]} = \text{Std of reported ATD/RTD value,}$$

where  $x$  is the reported ATD/RTD value and  $\mu = E[x]$  is its expectation value. The reporting resolution of ATD/RTD Quality is defined by ATD/RTD Quality resolution field.

Range: 0 to 63

This field is mandatory.

### ATD/RTD Change

This field indicates the first time derivative of the ATD/RTD value between the receptions of signals from the reference and the neighbor BTS. This value is based on measurements made during Monitor Period, if the monitoring period is provided. Otherwise it is the best estimate of the ATD/RTD Change value at the time of last ATD/RTD measurement. The range is -0.1 ... 0.1 ppm and resolution is 0,00005 ppm.

Range: -2000 ... 2000

## ATD/RTD Change Quality

ATD/RTD Change Quality field includes the quality of reported ATD/RTD Change. This ATD/RTD Change Quality field can be e.g. used to evaluate the reliability of RIT measurements in the SMLC. ATD/RTD Change Quality is defined as

$$\text{ATD/RTD Change Quality} = \sqrt{E[(x - \mu)^2]} = \text{Std of reported ATD/RTD Change value,}$$

where  $x$  is the reported ATD/RTD Change and  $\mu = E[x]$  is its expectation value. The reporting resolution of ATD/RTD Change Quality is defined by ATD/RTD Change Quality resolution field.

Range: 0 to 63

This field is mandatory.

## A.2.3 RIT Measurement Stop Message

The RIT Measurement Stop is a message from the SMLC to the LMU. It is sent when the SMLC wants the LMU to stop doing RIT measurements and reporting them. It contains the following information elements.

**Table A.3: RIT Measurement Stop message content**

Information element	Type/Reference	Presence
Message Type	Message Type A.2.3.1.1	M

### A.2.3.1 RIT Measurement Stop Message Information Elements

#### A.2.3.1.1 Message type IE

This IE contains the type of the message. This IE is mandatory.

## A.2.4 RIT Measurement Error Message

The RIT Measurement Error is a message from the LMU to the SMLC. It is sent any time when the LMU can not perform RIT measurements asked for in the RIT Measurement Request. This message can be returned in return result (after reception of measurement command) or as separate message (during periodic measurement). It contains the following information elements.

**Table A.4: RIT Measurement Error message content**

Information element	Type/Reference	Presence
Message Type	Message Type A.2.4.1.1	M
Error Type	RIT Error Type A.2.4.1.2	M
RIT Error	RIT Error A.2.4.1.3	M

### A.2.4.1 RIT Measurement Error Message Information Elements

#### A.2.4.1.1 Message type IE

This IE contains the type of the message. This IE is mandatory.

#### A.2.4.1.2 RIT Error Type IE

This IE indicates whether the error is temporarily (e.g. GPS reset) or permanent errors. Permanent error requires actions in SMLC, temporarily error informs that LMU can not send results temporarily (but it is expected to recover without any actions from SMLC).

'0' = Permanent error

'1' = Temporarily error

#### A.2.4.1.3 RIT Error IE

The purpose of the RIT Error IE is to provide the indication of error and the reason for it, when the LMU can not report required RIT results. This IE is mandatory. This IE has the following fields.

##### Error Reason

This field indicates the reason for error.

'0': There were no neighbor BTSs to be received.

'1': No ATD measurements were possible, since the common reference clock was not available.

'2': Requested type of measurements is not supported.

'3': Undefined error.



Annex B (informative):  
Void

## Annex C (informative): Status Messages

### C.1 Introduction

This annex describes the contents of messages related to the status of an LMU.

### C.2 Messages

The messages below are considered to be transported between the SMLC and the LMU.

#### C.2.1 Status Query Message

The Status Query is a message from the SMLC to the LMU. It contains the following information elements.

**Table C.1: Status Query message content**

Information element	Type/Reference	Presence
Message Type	Message Type C.2.1.1.1	M

##### C.2.1.1 Status Query Message Information Elements

###### C.2.1.1.1 Message Type IE

This IE contains the type of the message. This IE is mandatory.

#### C.2.2 Status Query Result Message

The Status Query Result is a message from the LMU to the SMLC. It contains the following information elements.

**Table C.2: Status Query Result message content**

Information element	Type/Reference	Presence
Message Type	Message Type 5.2.1.1	M
Time	Time C.2.2.1.2	M
RIT Status	RIT Status C.2.2.1.3	M
Reserved	Reserved(see note) C.2.2.1.4	M
O&M Status	O&M Status C.2.2.1.5	M

Note: This value was allocated in an earlier phase of the protocol and shall not be used in the future.

##### C.2.2.1 Status Query Result Message Information Elements

###### C.2.2.1.1 Message Type IE

This IE contains the type of the message. This IE is mandatory.

### C.2.2.1.2 Time IE

This IE contains the time stamp for this message. This IE is mandatory, and it contains the following fields:

#### Reference LAC

This field indicates the Location Area Code of the reference BTS. The purpose of the Location Area Code is to identify a location area.

Range: 0 - 65535

#### Reference CI

This field indicates the Cell Identity value of the reference BTS. The purpose of the Cell Identity value is to identify a cell within a location area.

Range: 0 - 65535

#### Reference Frame Number

This field indicates the frame number of the last measured burst from the reference BTS.

Range: 0 - 2715647

### C.2.2.1.3 RIT Status IE

The purpose of the RIT Status IE is to inform the SMLC about the status of on-going RIT related activity. This IE is mandatory, and it contains the following fields:

#### RIT Jobs

This field indicates the number of on-going RIT related jobs, i.e. the number of neighbor BTSs that are tried to be measured. Notice that 0 means that no RIT related activity is on-going.

Range: 0 – 63

### C.2.2.1.4 Reserved IE

This IE is reserved and the value is 0. Range: 0 – 63

### C.2.2.1.5 O&M Status IE

The purpose of the O&M Status IE is to inform the SMLC about the status of on-going O&M related activity. This IE is mandatory, and it contains the following fields:

#### O&M Jobs

This field indicates the number of on-going O&M related jobs.

Range: 0 – 63

## C.2.3 Status Update Message

The Status Update is a message from the LMU to the SMLC. It contains the following information elements.

**Table C.3: Status Response message content**

Information element	Type/Reference	Presence
Message Type	Message Type C.2.3.1.1	M
Reason for Status Update	Reason for Status Update C.2.3.1.2	M
Time	Time C.2.2.1.2	M
RIT Status	RIT Status C.2.2.1.3	M
Reserved	Reserved(see note) C.2.2.1.4	M
O&M Status	O&M Status C.2.2.1.5	M

Note: This value was allocated in an earlier phase of the protocol and shall not be used in the future.

### C.2.3.1 Status Update Message Information Elements

#### C.2.3.1.1 Message Type IE

This IE contains the type of the message. This IE is mandatory.

#### C.2.3.1.2 Reason for Status Update IE

This IE contains the reason for sending this Status Update Message. This IE is mandatory, and it contains the following fields:

##### Reason Code

This field indicates Reason code for sending this Status Update Message.

'0': power up (no knowledge about previous states)

'1': SW reset, unsuccessful recovery

'2': SW reset, successful recovery

'3': unknown selfdiagnosis error

'4': unreliable timebase error

'5': periodic status report, normal operation

## Annex D (informative): Change history

Meeting#	CR	Rev	Subject/Comment	New Version
SMG#29			Approved at SMG#29 as Release 98	7.0.0
SMG#30bis	A001		Addition of further LCS functionality in GSM Release 98	7.1.1
SMG32	A004		Modification to O&M operations to adapt to GSM 52.071 and some minor editorial corrections	8.1.0
GP-04	A007	2	References for LCS (Rel 4)	44.071v4.0.0
GP-05	001		1. Modifications of quality information (in RIT measurement response). 2. Reliability indication (in RIT measurement request) removed. 3. Monitoring period (in RIT measurement request) changed from (partly) conditional to optional. 4. Editorial corrections	4.1.0
GP-05	002		ASN.1 References update	4.1.0
GP-07	009		Correction of inconsistent text information in Location Service Message type IE	4.2.0
GP-07	005		Correction of Reporting Period range IE in RIT Measurement Request message	4.2.0
GP-10	010		Remove ambiguity on encoding of all LLP components	4.3.0

---

## History

<b>Document history</b>		
V4.0.0	April 2001	Publication
V4.1.0	June 2001	Publication
V4.2.0	December 2001	Publication
V4.3.0	July 2002	Publication