

ETSI TR 118 525 V1.0.0 (2016-03)



**oneM2M;
Application Developer Guide
(oneM2M TR-0025 version 1.0.0 Release 1)**



Reference

DTR/oneM2M-000025

Keywords

application, interoperability, M2M, testing

ETSI

650 Route des Lucioles
F-06921 Sophia Antipolis Cedex - FRANCE

Tel.: +33 4 92 94 42 00 Fax: +33 4 93 65 47 16

Siret N° 348 623 562 00017 - NAF 742 C
Association à but non lucratif enregistrée à la
Sous-Préfecture de Grasse (06) N° 7803/88

Important notice

The present document can be downloaded from:

<http://www.etsi.org/standards-search>

The present document may be made available in electronic versions and/or in print. The content of any electronic and/or print versions of the present document shall not be modified without the prior written authorization of ETSI. In case of any existing or perceived difference in contents between such versions and/or in print, the only prevailing document is the print of the Portable Document Format (PDF) version kept on a specific network drive within ETSI Secretariat.

Users of the present document should be aware that the document may be subject to revision or change of status.

Information on the current status of this and other ETSI documents is available at

<https://portal.etsi.org/TB/ETSIDeliverableStatus.aspx>

If you find errors in the present document, please send your comment to one of the following services:

<https://portal.etsi.org/People/CommiteeSupportStaff.aspx>

Copyright Notification

No part may be reproduced or utilized in any form or by any means, electronic or mechanical, including photocopying and microfilm except as authorized by written permission of ETSI.

The content of the PDF version shall not be modified without the written authorization of ETSI.

The copyright and the foregoing restriction extend to reproduction in all media.

© European Telecommunications Standards Institute 2016.

All rights reserved.

DECT™, **PLUGTESTS™**, **UMTS™** and the ETSI logo are Trade Marks of ETSI registered for the benefit of its Members.
3GPP™ and **LTE™** are Trade Marks of ETSI registered for the benefit of its Members and of the 3GPP Organizational Partners.
GSM® and the GSM logo are Trade Marks registered and owned by the GSM Association.

Contents

Intellectual Property Rights	5
Foreword.....	5
1 Scope	6
2 References	6
2.1 Normative references	6
2.2 Informative references.....	6
3 Definitions and abbreviations.....	7
3.1 Definitions.....	7
3.2 Abbreviations	7
4 Conventions.....	7
5 Use case.....	7
6 Architecture.....	8
7 Procedures	9
7.1 Introduction	9
7.2 Call Flows	10
7.2.1 Application registration and Access control policy creation	10
7.2.2 Initial resource creation	11
7.2.3 Discovery of group resources	12
7.2.4 Discovery and retrieval of contentInstance resources.....	13
7.3 Remote control scenarios	15
7.3.1 Introduction.....	15
7.3.2 Single light lamp control.....	15
7.3.3 Multiple light lamps control.....	15
8 Implementation.....	16
8.1 Introduction	16
8.2 Assumptions.....	16
8.3 Addressing for Entities.....	17
8.4 Modelling for Light State Data.....	17
8.5 Resource Structure	17
8.5.1 Resource Structure of IN-CSE.....	17
8.5.2 Resource Structure of MN-CSE.....	17
8.6 Role of Entities.....	19
8.6.1 oneM2M service platform (IN-CSE).....	19
8.6.2 Home gateway application (MN-AE).....	19
8.6.3 Light applications (ADN-AE1 and ADN-AE2).....	19
8.6.4 Smartphone application (IN-AE).....	19
8.7 Implementation Procedures.....	20
8.7.1 Introduction.....	20
8.7.2 MN-CSE registration.....	20
8.7.3 Access control policy creation.....	20
8.7.4 Application entities registration.....	21
8.7.4.1 Light application ADN-AE1	21
8.7.4.2 Light application ADN-AE2	21
8.7.4.3 Home gateway application MN-AE.....	22
8.7.4.4 Smartphone application IN-AE.....	22
8.7.5 Containers creation	23
8.7.5.1 Create a container of ADN-AE1	23
8.7.5.2 Create a container of ADN-AE2	23
8.7.6 ContentInstances creation.....	23
8.7.6.1 Create a content instance of ADN-AE1	23
8.7.6.2 Create a content instance of ADN-AE2	24
8.7.7 Groups creation.....	24
8.7.7.1 Create a group for updating all light states.....	24

8.7.7.2	Create a group for retrieval of all latest light states.....	25
8.7.8	Subscriptions creation.....	25
8.7.8.1	Subscription to the content instance of ADN-AE1	25
8.7.8.2	Subscription to the content instance of ADN-AE2	26
8.7.9	Discovery.....	26
8.7.9.1	Introduction.....	26
8.7.9.2	Discovery of single light registered with MN-CSE	26
8.7.9.3	Discovery of groups located in MN-CSE.....	27
8.7.10	Latest content instances retrieval	27
8.7.10.1	Introduction.....	27
8.7.10.2	Retrieve the latest content instance of ADN-AE1	27
8.7.10.3	Retrieve the latest content instance of ADN-AE2.....	28
8.7.10.4	Retrieve a group of latest content instances for all light states.....	28
8.7.11	Light state modification	29
8.7.11.1	Introduction.....	29
8.7.11.2	Create a content instance under container of ADN-AE1	30
8.7.11.3	Create a content instance under container of ADN-AE2	30
8.7.11.4	Update the state of all lights using group fanout.....	30
8.7.12	Notifications	31
8.7.12.1	Introduction.....	31
8.7.12.2	Post a notification to ADN-AE1	31
8.7.12.3	Post a notification to ADN-AE2	32
9	Conclusion.....	32
Annex A:	Reading Resources.....	33
Annex A.1	Introduction.....	33
Annex A.2	CSE resources	33
<i>Annex A.2.1</i>	<i>IN-CSE.....</i>	<i>33</i>
<i>Annex A.2.2</i>	<i>MN-CSE.....</i>	<i>33</i>
Annex A.3	Gateway device application MN-AE	34
Annex A.4	Light device applications	34
<i>Annex A.4.1</i>	<i>ADN-AE1</i>	<i>34</i>
<i>Annex A.4.2</i>	<i>ADN-AE2</i>	<i>35</i>
Annex A.5	Smartphone application IN-AE.....	35
Annex A.6	Access control policy.....	36
Annex A.7	Containers	36
Annex A.7.1	Container under ADN-AE1	36
Annex A.7.2	Container under ADN-AE2	37
Annex A.8	ContentInstances	37
Annex A.8.1	Latest contentInstance in ADN-AE1	37
Annex A.8.2	Latest contentInstance in ADN-AE2	38
Annex A.9	Subscriptions.....	38
Annex A.9.1	Subscription to container in ADN-AE1	38
Annex A.9.2	Subscription to container in ADN-AE2	39
Annex A.10	Groups.....	39
<i>Annex A.10.1</i>	<i>Group1</i>	<i>39</i>
<i>Annex A.10.2</i>	<i>Group2</i>	<i>40</i>
History	41

Intellectual Property Rights

IPRs essential or potentially essential to the present document may have been declared to ETSI. The information pertaining to these essential IPRs, if any, is publicly available for **ETSI members and non-members**, and can be found in ETSI SR 000 314: "*Intellectual Property Rights (IPRs); Essential, or potentially Essential, IPRs notified to ETSI in respect of ETSI standards*", which is available from the ETSI Secretariat. Latest updates are available on the ETSI Web server (<https://ipr.etsi.org>).

Pursuant to the ETSI IPR Policy, no investigation, including IPR searches, has been carried out by ETSI. No guarantee can be given as to the existence of other IPRs not referenced in ETSI SR 000 314 (or the updates on the ETSI Web server) which are, or may be, or may become, essential to the present document.

Foreword

This Technical Report (TR) has been produced by ETSI Partnership Project oneM2M (oneM2M).

1 Scope

The present document provides a guide for application developers to develop applications using functionalities provided by any oneM2M compliant service platform with the scope of as follows:

- Objective of the use case,
- The architecture of the use case mapped into an oneM2M service platform,
- The execution procedures for implementation of the use case, and
- Implementation details of the use case.

2 References

2.1 Normative references

References are either specific (identified by date of publication and/or edition number or version number) or non-specific. For specific references, only the cited version applies. For non-specific references, the latest version of the referenced document (including any amendments) applies.

Referenced documents which are not found to be publicly available in the expected location might be found at <https://docbox.etsi.org/Reference/>.

The following referenced documents are necessary for the application of the present document.

Not applicable.

2.2 Informative references

References are either specific (identified by date of publication and/or edition number or version number) or non-specific. For specific references, only the cited version applies. For non-specific references, the latest version of the referenced document (including any amendments) applies.

NOTE: While any hyperlinks included in this clause were valid at the time of publication, ETSI cannot guarantee their long term validity.

The following referenced documents are not necessary for the application of the present document but they assist the user with regard to a particular subject area.

[i.1] oneM2M Drafting Rules

NOTE: Available at <http://www.onem2m.org/images/files/oneM2M-Drafting-Rules.pdf>

[i.2] ETSI TS 118 101 (V1.1.0): "oneM2M; Functional Architecture (oneM2M TS-0001)".

[i.3] ETSI TS 118 104 (V1.1.0): "oneM2M; Service Layer Core protocol Specification (oneM2M TS-0004)".

[i.4] ETSI TS 118 109 (V1.1.0): "oneM2M; HTTP Protocol Binding (oneM2M TS-0009)".

[i.5] ETSI TS 118 111: "oneM2M; Common Terminology (oneM2M TS-0011)".

3 Definitions and abbreviations

3.1 Definitions

For the purposes of the present document, the terms and definitions given in ETSI TS 118 111 [i.5] and the following apply.

NOTE: A term defined in the present document takes precedence over the definition of the same term, if any, in ETSI TS 118 111 [i.5].

M2M service provider domain: part of the M2M System that is associated with a specific M2M Service Provider

registrar CSE: CSE where an Application or another CSE has registered

resource: uniquely addressable entity in oneM2M architecture

3.2 Abbreviations

For the purposes of the present document, the following abbreviations apply:

ACP	Access Control Policy
ADN	Application Dedicated Node
ADN-AE	AE which resides in the Application Dedicated Node
AE	Application Entity
CoAP	Constrained Application Protocol
CSE	Common Services Entity
CSE-ID	Common Service Entity Identifier
DNS	Domain Name System
FQDN	Fully Qualified Domain Name
HTTP	HyperText Transfer Protocol
IN	Infrastructure Node
IN-AE	Application Entity that is registered with the CSE in the Infrastructure Node
IN-CSE	CSE which resides in the Infrastructure Node
IP	Internet Protocol
JSON	JavaScript Object Notation
M2M	Machine to Machine
Mca	Reference Point for M2M Communication with AE
Mcc	Reference Point for M2M Communication with CSE
MN	Middle Node
MN-AE	Application Entity that is registered with the CSE in Middle Node
MN-CSE	CSE which resides in the Middle Node
PoA	Point of Access
SP	Service Provider
URI	Uniform Resource Identifier
XML	eXtensible Markup Language

4 Conventions

The key words "Shall", "Shall not", "May", "Need not", "Should", "Should not" in this document are to be interpreted as described in the oneM2M Drafting Rules [i.1].

5 Use case

This clause briefly describes the use case from perspective of service being provided by the oneM2M platform. The physical device components are introduced in the current section.

The described use case enables the remote control of lights via a smartphone or smart tab which embeds an application that gains access to a oneM2M service platform. The overview of the use case of remote lights control is shown in figure 5.1. The main components are introduced as follows:

- Light lamps shown in the current use case are deployed at a house and attached to a home gateway. The light lamps are able to interact with a oneM2M platform through a wireless access interface.
- The home gateway is configured to be able to search and connect light lamps into itself and to communicate with a oneM2M service platform in terms of exchanging and storing light lamps states between the light lamps and the oneM2M service platform.
- oneM2M service platform provides vertical application services targeted at different field domains, for instance, home, vehicle, and industry. The oneM2M service platform supports a group of common service functionalities such as registration, discovery, data management, group management, subscription/notification etc.
- The smartphone application is embedded into a smartphone and acts as a remote light controller with capabilities as the follows:
 - Discovery of light lamps deployed into the home gateway.
 - Sending commands to change light states i.e. ON and OFF.
 - Retrieval of light states.

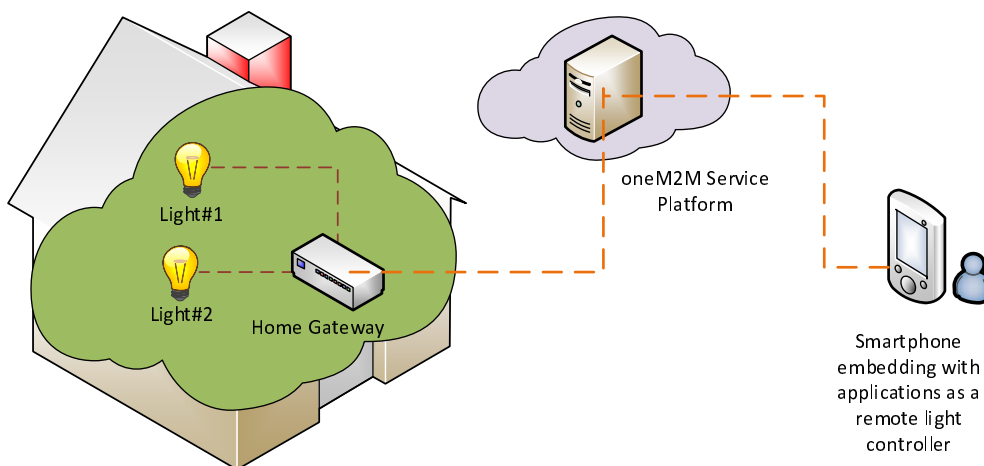


Figure 5.1: Overview of remote lights control use case

6 Architecture

This clause describes the architecture of the implemented use case with components represented by the oneM2M entity roles. For instance, a physical device can be modelled as an ADN-AE and the oneM2M service system can be modelled as an IN-CSE, etc.

The remote lights control use case shown in figure 5.1 can be mapped into the oneM2M functional architecture depicted in figure 6.1.

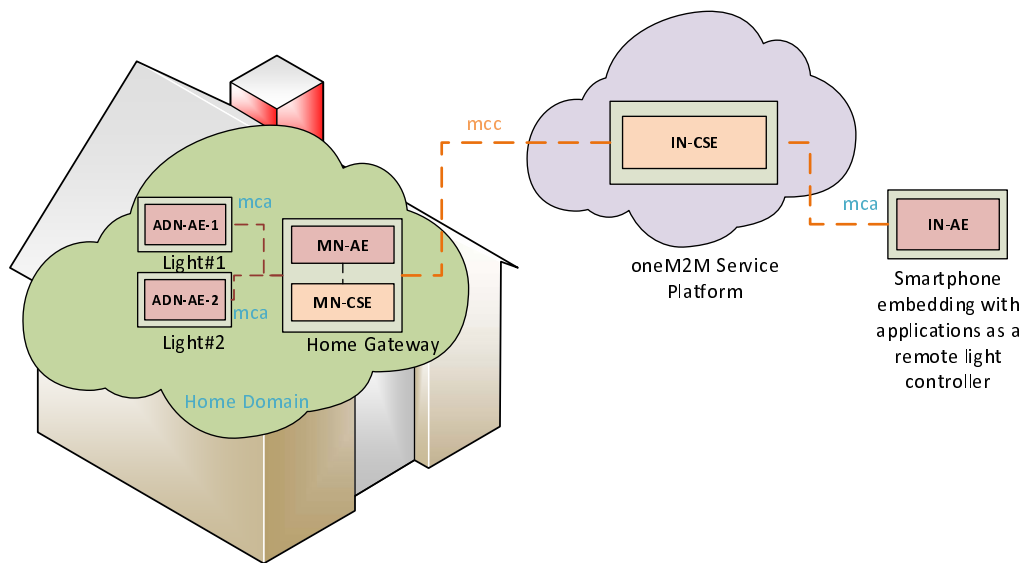


Figure 6.1: oneM2M functional architecture of remote lights control use case

In oneM2M functional architecture two entity roles are defined, one is AE and the other is CSE. Application dedicated devices e.g. light lamps are usually acted as an ADN-AE. Smartphone applications that are embedded into smartphone devices and able to communicate directly with oneM2M service platform can also be acted as an ADN-AE. oneM2M service system is acted as an IN-CSE and the home gateway plays a role of MN-CSE.

Two reference points, *mca* and *mcc* which are defined in the oneM2M functional architecture are used between AE and CSE and between two CSEs in the current use case, respectively. As figure 6.1 shows, the reference point used between any light application (ADN-AE-1 or ADN-AE-2) and home gateway MN-CSE is *mca* while that of between home gateway and oneM2M service platform is *mcc*.

In summary, applications used in the current use case are classified as follows:

- ADN-AE1: an application embedded in the light lamp *Light#1* with capabilities to control light lamp *Light#1* and interact with the home gateway MN-CSE through *mca* reference point;
- ADN-AE2: an application embedded in the light lamp *Light#2* with capabilities to control light lamp *Light#2* and interact with the home gateway MN-CSE through *mca* reference point;
- IN-AE: a smartphone application embedded in the smartphone device with capabilities to interact directly with the oneM2M service platform IN-CSE through *mcc* reference point and thereby remotely control light lamps *Light#1* and *Light#2*;
- MN-AE: a gateway application embedded into the home gateway MN-CSE and interact with MN-CSE through *mca* reference point.

7 Procedures

7.1 Introduction

The deployment of oneM2M standard of present use case requires procedures that are classified as follows:

- **Registration:** The current procedure contains light lamps registration, gateway application registration, and accessControlPolicy resource creation for a selective access to data storage resources.

- **Initial resource creation:** The current procedure contains group resources creation, container resources creation with specific access control policies, content instance resources creation with initial light states, subscription resources creation for notifications.
- **Discovery of container resource:** all containers with a specific filter criteria can be discovered by the gateway application and provided as members of group resources.
- **Discovery and retrieval lights states:** all containers with a specific filter criteria could be discovered and retrieved using resource identities through a smartphone application which gains access to oneM2M service platform and content information could also be retrieved.
- **Single light switch on/off:** Any light that is discovered by and connected to the smartphone application is able to be switched on and off via a smartphone application.
- **Multiple lights switch on/off:** More than one lights that are discovered by and connected to the smartphone application are able to be switched on and off together via a smartphone application.

7.2 Call Flows

7.2.1 Application registration and Access control policy creation

Call flows regarding the registration phase depicted in figure 7.2.1-1 are ordered as follows:

- Gateway (MN-CSE) registers with the oneM2M service platform (IN-CSE).
- Gateway application (MN-AE) registers with the gateway (MN-CSE).
- Light applications (ADN-AE1 and ADN-AE2) register with the gateway (MN-CSE).
- Smartphone application (IN-AE) registers with the oneM2M service platform (IN-CSE) and then IN-CSE announces the smartphone application resource (IN-AE) to the gateway (MN-CSE).
- Gateway application (MN-AE) discovers the smartphone application (IN-AE) from gateway (MN-CSE) with specific filter criteria. The discovered IN-AE could be granted to access to the remote light control service containers.
- Gateway application (MN-AE) creates an accessControlPolicy resource granting all the entities playing roles in the current use case including ADN-AE1, ADN-AE2, MN-AE and IN-AE could access to the created container and content instance resources.

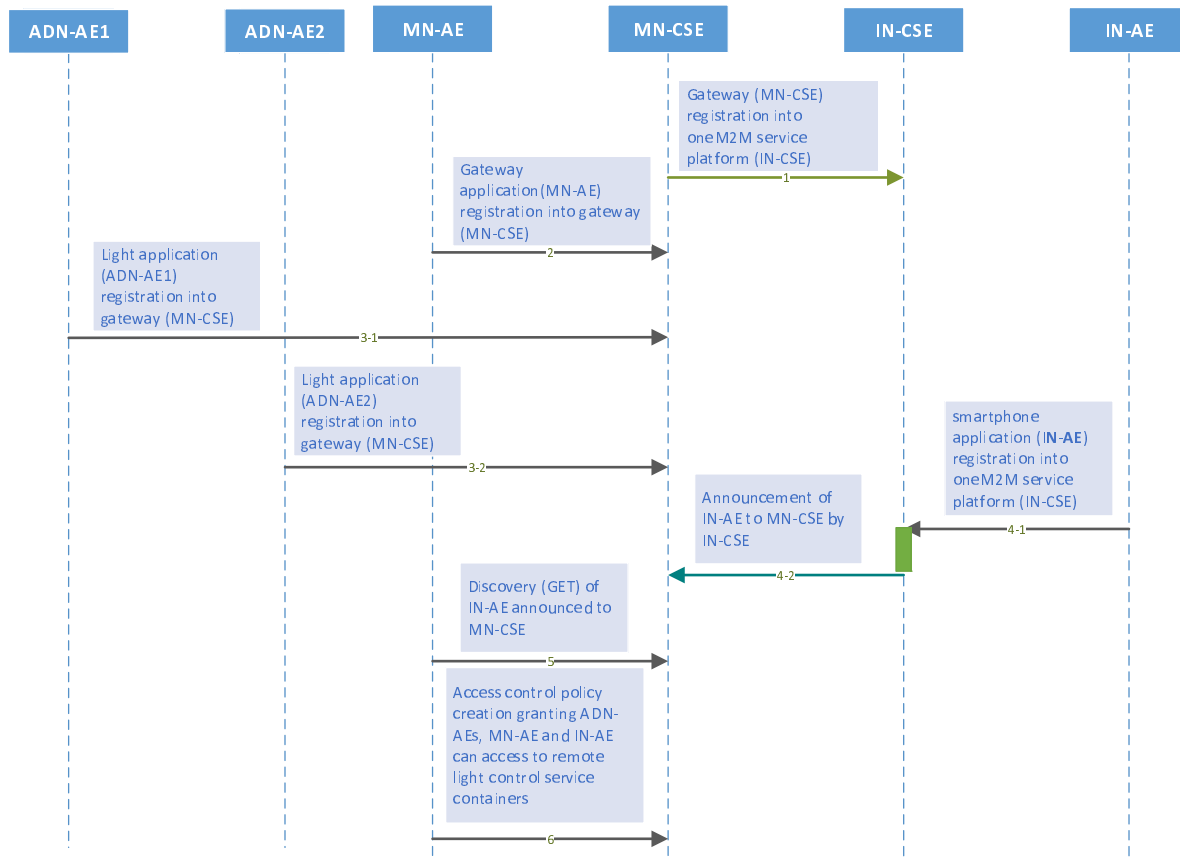


Figure 7.2.1-1: Registration phase call flows

7.2.2 Initial resource creation

Call flows regarding the initial resource creation phase depicted in figure 7.2.2-1 are ordered as follows:

- Gateway application (MN-AE) creates two group resources into gateway (MN-CSE), one for updating group light state named as *group_for_light_state_update* and the other one for retrieving group light state named as *group_for_light_state_retrieval*. The group members will be added from the list of discovered container resources through the discovery process initialized by MN-AE. These group resources are both created with the same access control policy.
- Two container resources are created in the gateway (MN-CSE) to store the light states under the registered light application ADN-AE1 and ADN-AE2, respectively. The containers are created using the same access control policy.
- Content Instance resources are created by light applications (ADN-AE1 and ADN-AE2) under each created container to represent the controlled light states.
- Subscription resource creation under the containers in the gateway (MN-CSE) so that subscribers i.e. light applications can be notified whenever there is new contentInstance is created by MN-AE or IN-AE.

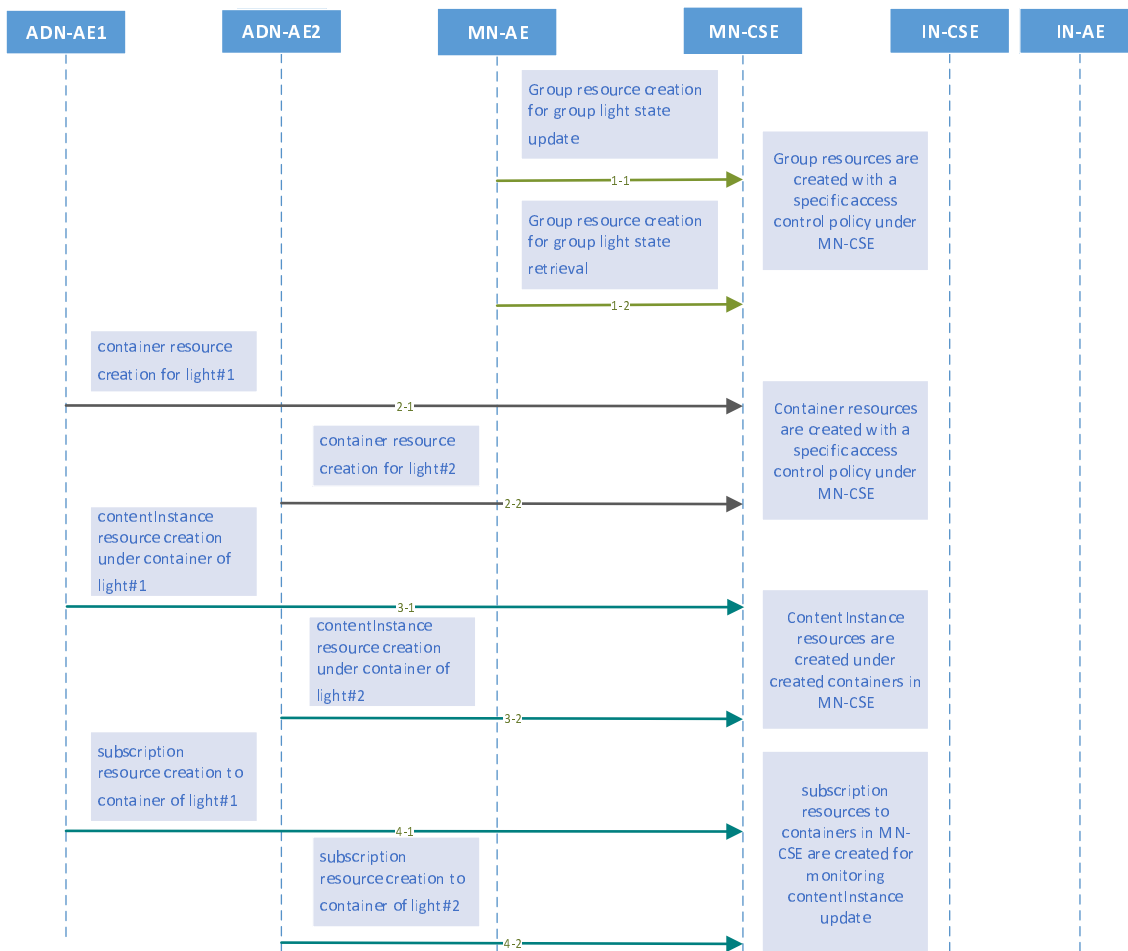


Figure 7.2.2-1: Initial resource creation phase call flows

7.2.3 Discovery of group resources

Call flows regarding the discovery and update of group resources phase depicted in figure 7.2.3-1 are ordered as follows:

- Gateway application (MN-AE) could periodically send a RETRIEVE request including the parameter *filterUsage* and specific filter criteria condition(s) as a query string for discovery of container resources stored in the MN-CSE of gateway. A group of filter criteria conditions for the discovery operation includes *createdBefore*, *createdAfter*, *modifiedSince*, *unmodifiedSince*, *label*, *creator*, *expireAfter*, *resourceType* etc.
- Gateway (MN-CSE) responds with URIs of the discovered container resources, if any, to the gateway application (MN-AE) according to the filter criteria(s).
- Gateway application (MN-AE) could also send a POST request to update the list of the group members with the discovered containers providing URIs for contentInstance creation and latest contentInstance resource retrieval. The discovered member URIs are built in the previously created group resource *group_for_light_state_update*, and *group_for_light_state_retrieval*.

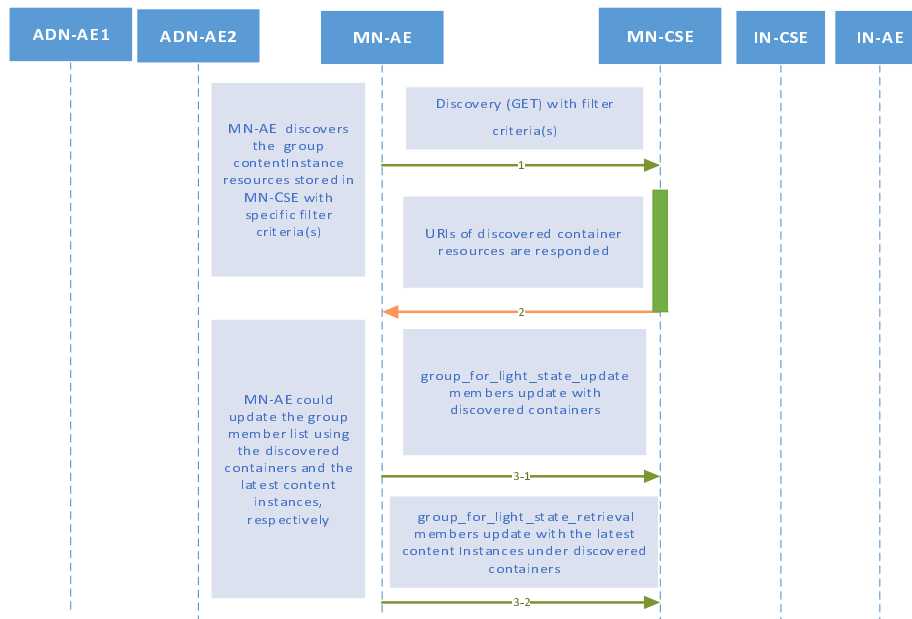


Figure 7.2.3-1: Discovery and group light state update phase call flows

7.2.4 Discovery and retrieval of contentInstance resources

Call flows regarding the discovery and retrieval of contentInstance resource phase depicted in figure 7.2.4-1 and 7.2.4-2 are ordered as follows:

- The smartphone application (IN-AE) periodically sends a RETRIEVE request including the parameter *filterUsage* and specific filter criteria condition(s) as a query string for discovery of container resources stored in the MN-CSE of gateway.

The IN-AE could also send a Discovery request to the MN-CSE for the discovery of the group resources located in the MN-CSE.

- The gateway (MN-CSE) responds IN-AE with URIs of the discovered container resources under ADN-AE1 and ADN-AE2, if any.

In the case that when IN-AE sends a Discovery request for the discovery of group resources, the MN-CSE responds IN-AE with the URIs of the discovered group resources located in the MN-CSE, if any.

- The IN-AE sends GET requests for retrieval of the latest contentInstance from each discovered single light container.

In the case of retrieval of a group of the latest content instance resource from the group *group_for_light_state_retrieval*, the IN-AE could send a *fanOutPoint* request to the discovered group URI of *group_for_light_state_retrieval*.

- The IN-AE is responded with the latest light state (s).

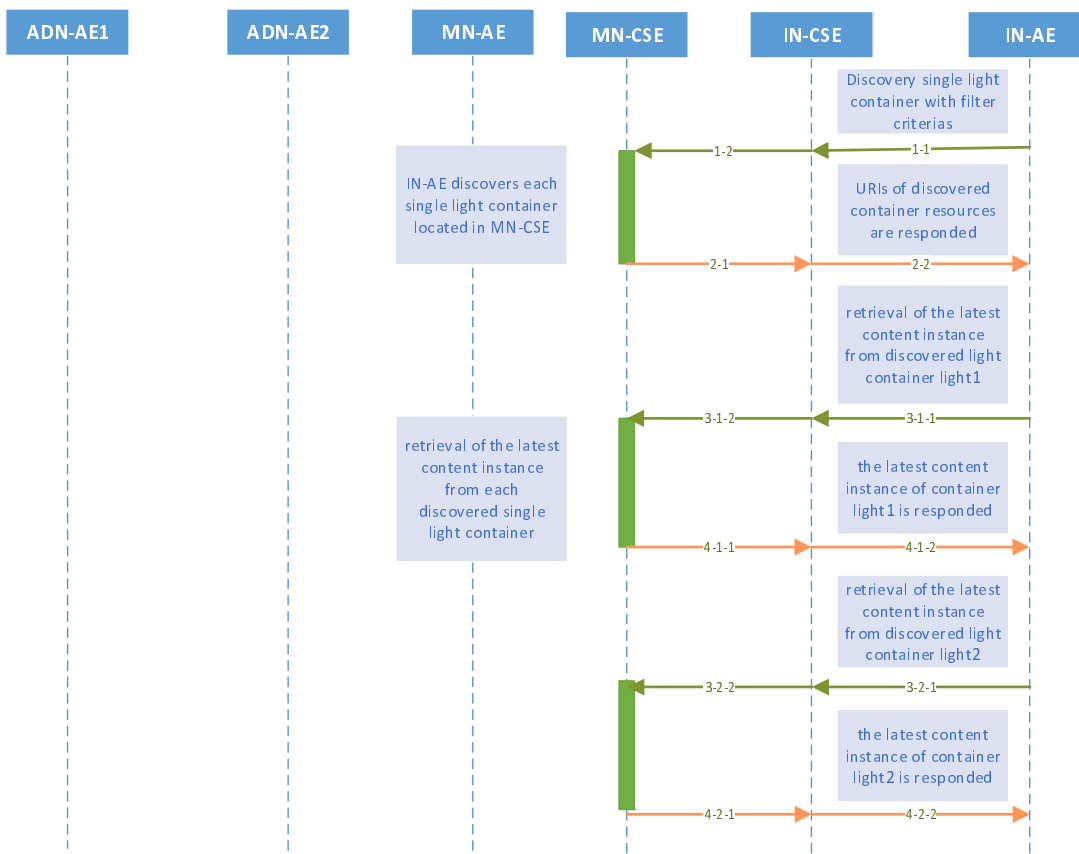


Figure 7.2.4-1: Discovery and single light retrieval phase call flows

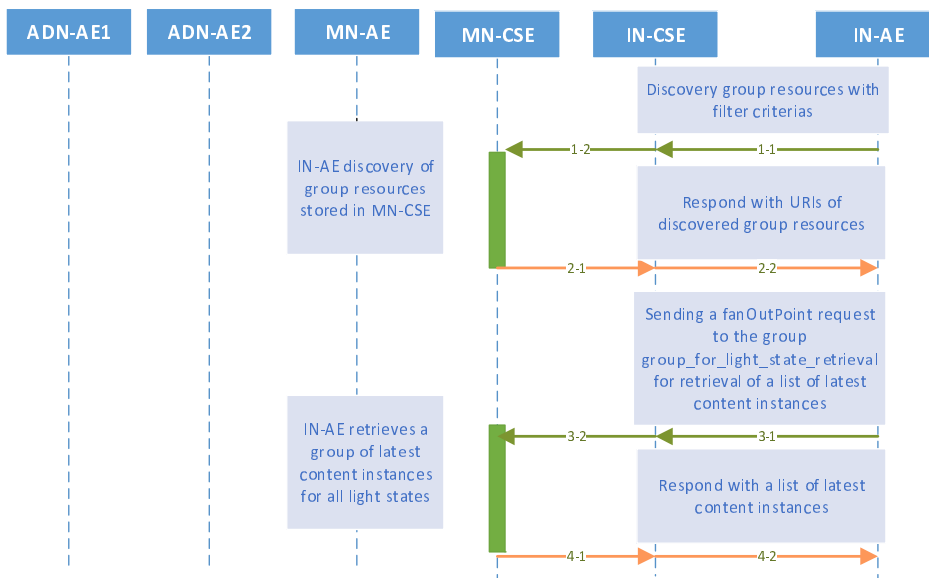


Figure 7.2.4-2 Discovery and a group of lights retrieval phase call flows

7.3 Remote control scenarios

7.3.1 Introduction

Light lamps are able to be controlled remotely through a smartphone embedded with an application gaining access to the oneM2M service platform especially when the smartphone and light bulbs are connected to different networks. Two scenarios are introduced in clauses 7.3.2 and 7.3.3.

7.3.2 Single light lamp control

Any single light lamp including *Light#1* and *Light#2* can be controlled remotely by a human user through a smartphone application (IN-AE). Call flows for single light lamp control depicted in figure 7.3.2-1 are ordered as follows:

- When the user updates the light lamp state on her/his smartphone, the IN-AE creates a new `contentInstance` representing a new light state under the targeted container of ADN-AE stored in the MN-CSE.
- If the `contentInstance` is created successfully, the MN-CSE sends a notification to the corresponding ADN- AE.

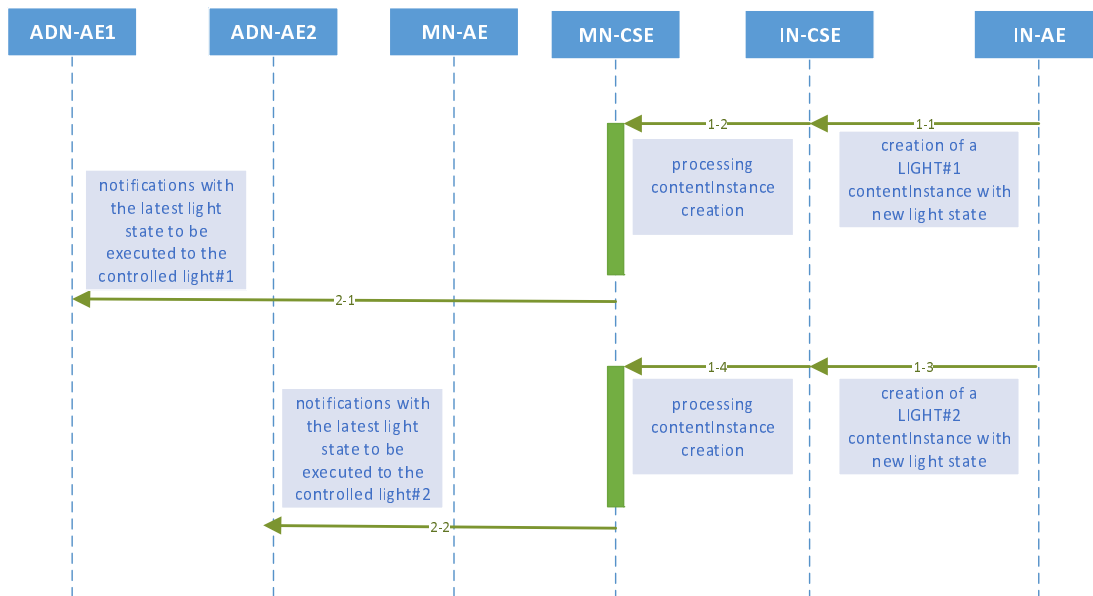


Figure 7.3.2-1: Single light remote control phase call flows

7.3.3 Multiple light lamps control

Multiple light lamps are enable to be controlled remotely at one time in order to facilitate the control process.

The light lamp remote control enable human users to control remotely multiple light lamps through a smartphone application (IN-AE) by sending a single light control command to the oneM2M service platform (IN-CSE). Call flows for multiple light lamps control depicted in figure 7.3.3-1 are ordered as follows:

- When the user updates a group of light lamp states on her/his smartphone, the IN-AE creates a group of new `contentInstances` representing a group of new light states under the targeted container stored in the MN-CSE.
- If the `contentInstances` are created successfully, the MN-CSE sends a group of notifications to the corresponding each ADN-AEs.

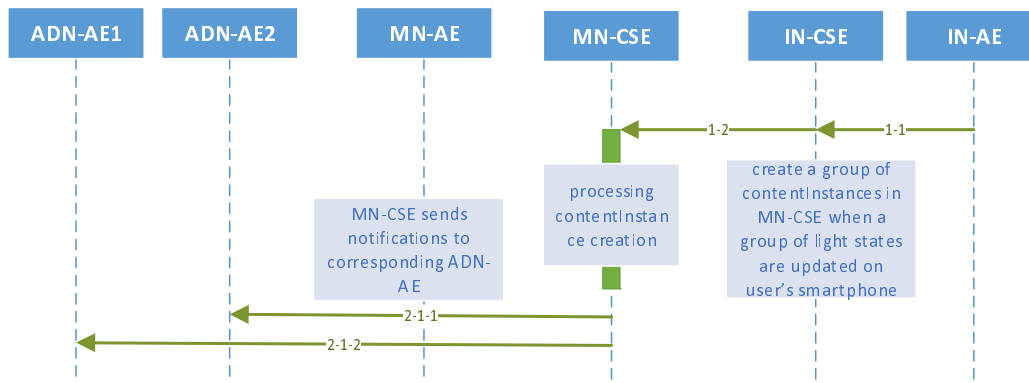


Figure 7.3.3-1: Multiple lights remote control phase call flows

8 Implementation

8.1 Introduction

Clause 8 presents necessary procedures required for the implementation of the remote lights control use case, including assumption conditions met for the correct implementation of the current use case, and resource tree etc.

8.2 Assumptions

Assumptions are presented as below in order to ensure the remote lights control use case could be correctly implemented.

- All the applications are server capable;
- Devices and application entites are independently addressable with host names resolved by DNS network services;
- Host port number 8080 is reserved for oneM2M services;
- Security is not considered in the current use case;
- HTTP binding of oneM2M primitives is used in the current use case;
- XML serialization of oneM2M primitives is used in the current use case;
- All mandatory HTTP headers are presented in the HTTP requests while optional headers are selectively used in the current use case;
- All mandatory resource attributes for resources presented in the current use case are presented in the HTTP requests while optional resource attributes are selectively used in the current use case;
- The IN-CSE and MN-CSE participated in the current use case are deployed within the same oneM2M Service Provider domain;
- All AEs participated in the current use case are initially registered with CSEs and the identifier of the AEs are assigned by the Registrar CSE of the AE accordingly, starting with a character of 'C';
- All resources created in the current use case could be addressable with the oneM2M Resource Identifier form of *Hierarchical address*;
- Short names for the representation of the resources and attributes are used in the current use case;

- Default access control policy has already created under IN-CSE and it is used for MN-CSE registration with IN-CSE;
- All request originators send *Blocking Requests* for accessing resources located in CSEs.

8.3 Addressing for Entities

Each oneM2M entity including AE and CSE could be addressable with correct host address that can be IP addresses or FQDN addresses resolved to IP addresses by DNS network services according to addressing rules specified in oneM2M standards.

All the entities presented in the current use case could be addressable with the following URIs.

- IN-CSE: `/in-cse`
- MN-CSE: `/mn-cse`

where the *in-cse* is SP-relative-CSE-ID of IN-CSE and the *mn-cse* is SP-relative-CSE-ID of the MN-CSE.

8.4 Modelling for Light State Data

The light state *ON* or *OFF* stored as the content of content instance resource is modelled as string inside the XML representation of the content instance resources, for example, `<content>ON</content>` or `<content>OFF</content>`, respectively.

8.5 Resource Structure

The development of an oneM2M application includes the design of the resource trees of service capability layers i.e. IN-CSE and MN-CSE in the current use case. The resource tree is constructed with child resources created according to the high level procedures presented in oneM2M application developer guide clause 7. All the child resources shown in the resource trees are mandatorily required in order to correctly implement the remote lights control use case.

8.5.1 Resource Structure of IN-CSE

The resource tree of IN-CSE starts with a CSEBase named *in-cse* depicted in figure 8.5.1-1.

The root CSEBase is composed of two direct child resources, a remoteCSE named *mn-cse* and an AE named *in-ae*. The sub-resources of *mn-cse* will be introduced in clause 8.5.2.

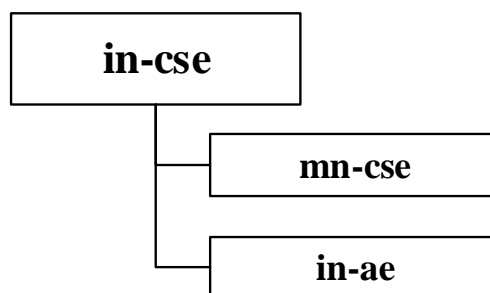


Figure 8.5.1-1: IN-CSE resource structure

8.5.2 Resource Structure of MN-CSE

The resource tree of MN-CSE starts with a remoteCSE named *mn-cse* depicted in figure 8.5.2-1.

The resource tree of MN-CSE is constructed with child resources as following:

- an accessControlPolicy named *acp1*,

- an ADN-AE named *adn-ae1* which contains sub-resources of a container named *light1* and multiple contentInstances,
- an ADN-AE named *adn-ae2* which contains sub-resources of a container named *light2* and multiple contentInstances,
- a MN-AE named *mn-ae* which contains two group resources,
- subscription resources presented as child resource of container *light1* and *light2*, respectively, and
- two group resources named *group1* and *group2* are created with members of the containers created in MN-CSE and the latest content instances in all containers (i.e. container *light1* and *light2*), respectively. Smartphone application users with granted access policy can send *fanOutPoint* requests containing created new content instances in order to update all the light states. All the latest light states can also be retrieved by sending a GET request to the group *group2*.

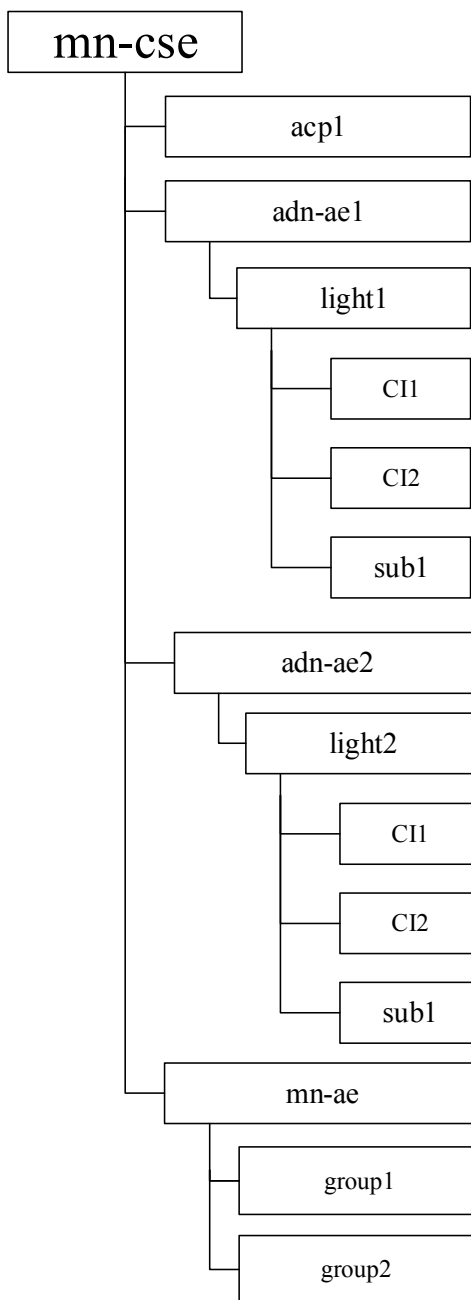


Figure 8.5.2-1: MN-CSE resource tree

8.6 Role of Entities

8.6.1 oneM2M service platform (IN-CSE)

The oneM2M service platform is modelled as an IN-CSE with representation of a root CSEBase resource *in-cse*. The CSEBase *in-cse* is responsible for

- handling the registration requests from smartphone application *in-ae* and home gateway *mn-cse*, respectively, and
- announcing *in-ae* to the remoteCSE *mn-cse*.

8.6.2 Home gateway application (MN-AE)

The home gateway application is modelled as a MN-AE which charges to

- initialize the home gateway device,
- create access control policy resource *acp1* in the MN-CSE,
- register the home gateway application with MN-CSE,
- create the group resources with access control policy *acp1* in the MN-CSE,
- discover device applications registered with the MN-CSE and group member resources located in the MN-CSE, and
- display all lights' states.

8.6.3 Light applications (ADN-AE1 and ADN-AE2)

Both the light applications are modelled as ADN-AE which charges to

- initialize the light control device,
- register the light devices with MN-CSE,
- create container resources *light1* and *light2* with access control policy *acp1*, respectively,
- create subscription resources *sub1* and *sub2* under container *light1* and *light2*, respectively, and
- create content instance resources under container *light1* and *light2* with initial light state, respectively.

8.6.4 Smartphone application (IN-AE)

The smartphone application is modelled as a IN-AE, which could directly communicate with oneM2M service platform IN-CSE and charges to

- initialize the smartphone light control application,
- register the smartphone application with IN-CSE,
- discover the containers *light1* and *light2*,
- display the discovered light states,
- accept the light state modification commands from the smartphone application user,
- execute the light state modification commands for single and multiple lights.

8.7 Implementation Procedures

8.7.1 Introduction

The implementation procedures used in the current use case are mapped into HTTP Binding and XML serialization of oneM2M primitives according to the standard APIs describing the references points mca and mcc, as defined in ETSI TS 118 101 [i.2], ETSI TS 118 104 [i.3], the HTTP binding ETSI TS 118 109 [i.4].

In addition, *short name* for the representation of the resources and attributes are used in the implementation procedures.

8.7.2 MN-CSE registration

The implementation procedure starts with the registration of MN-CSE with IN-CSE following procedure as below.

HTTP Request :

```
POST ~/in-cse/server?rcn=0 HTTP/1.1
Host: http://in.provider.com:8080
X-M2M-Origin: /mn-cse
Content-Type: application/vnd.onem2m-res+xml;ty=16
X-M2M-RI: incse/88643

<?xml version="1.0" encoding="UTF-8"?>
<m2m:csr xmlns:m2m="http://www.onem2m.org/xml/protocols" rn="home_gateway">
  <csi>mn-cse</csi>
  <cb>mn.provider.com/mn-cse</cb>
  <rr>TRUE</rr>
  <poa>http://mn.provider.com:8080</poa>
  <cst>2</cst>
  <acpi>/in-cse/acp-666957710</acpi>
</m2m:csr>
```

HTTP Response :

```
201 Created
X-M2M-RSC: 2001
X-M2M-RI: incse/88643
Content-Location: /in-cse/csr-299409504
```

8.7.3 Access control policy creation

When user creates the access control policy resource, user has to clearly specify the name of *accessControlOriginator* in *acor* field and the granted operations for the access control originator in the *acop* field.

The value of *acop* is set to 63 which indicates that the specified originator is granted to conduct *CREATE*, *RETRIEVE*, *UPDATE*, *DELETE*, *DISCOVERY*, and *NOTIFY* operations.

The creation of access control policy resource acp1 in MN-CSE could be implemented following procedure as below.

HTTP Request :

```
POST ~/mn-cse/home_gateway?rcn=0 HTTP/1.1
Host: http://mn.provider.com:8080
X-M2M-Origin: /mn-cse/Cgateway_ae
Content-Type: application/vnd.onem2m-res+xml;ty=1
X-M2M-RI: mncse/62948

<m2m:acp xmlns:m2m="http://www.onem2m.org/xml/protocols" rn="gateway_acp">
  <pv>
    <acr>
      <acor>/in-cse/home_gateway /mn-cse/Cgateway_ae /mn-cse/Clight_ae1
/mn-cse/Clight_ae2 /in-cse/Csmartphone_ae</acor>
      <acop>63</acop>
    </acr>
  </pv>
```

```

    <pvs>
      <acr>
        <acor>/in-cse/home_gateway /mn-cse/Cgateway_ae /mn-cse/Clight_ae1
/mn-cse/Clight_ae2 /in-cse/Csmartphone_ae</acor>
        <acop>51</acop>
      </acr>
    </pvs>
  </m2m:acp>

```

HTTP Response :

```

201 Created
X-M2M-RSC: 2001
X-M2M-RI: mncse/62948
Content-Location: /mn-cse/acp-805496226

```

The access control policy resource can be used to grant those applications that are registered with MN-CSE the access rights to conduct specific operations and access to specific resources. The list of applications could be obtained with a discovery procedure using filter criteria conditions. For more details about the discovery procedure, please go to clause 8.7.9. Here it is required that the list of applications registered with MN-CSE before creating the access control policy resource has already been discovered.

8.7.4 Application entities registration

8.7.4.1 Light application ADN-AE1

The registration of ADN-AE1 with MN-CSE could be implemented following procedure as below. Note that the access control policy Identifier (unstructured CSE-relative resourceID) which is assigned to ADN-AE1 is [/mn-cse/acp-805496226](#).

HTTP Request :

```

POST ~/mn-cse/home_gateway?rcn=0 HTTP/1.1
Host: http://mn.provider.com:8080
X-M2M-Origin: /C
Content-Type: application/vnd.onem2m-res+xml;ty=2
X-M2M-RI: mncse/92345

<?xml version="1.0" encoding="UTF-8"?>
<m2m:ae xmlns:m2m="http://www.onem2m.org/xml/protocols" rn="light_ae1">
  <api>A01.com.company.lightApp1</api>
  <rr>TRUE</rr>
  <poa>http://192.168.0.10:9090</poa>
  <acpi>/mn-cse/acp-805496226</acpi>
</m2m:ae>

```

HTTP Response :

```

201 Created
X-M2M-RSC: 2001
X-M2M-RI: mncse/92345
Content-Location: /mn-cse/ae-CAE340304071

```

8.7.4.2 Light application ADN-AE2

The registration of ADN-AE2 with MN-CSE could be implemented following procedure as below. Note that the access control policy Identifier (unstructured CSE-relative resourceID) which is assigned to ADN-AE2 is [/mn-cse/acp-805496226](#).

HTTP Request :

```

POST ~/mn-cse/home_gateway?rcn=0 HTTP/1.1
Host: http://mn.provider.com:8080
X-M2M-Origin: /C
Content-Type: application/vnd.onem2m-res+xml;ty=2

```

X-M2M-RI: mncse/18346

```
<?xml version="1.0" encoding="UTF-8"?>
<m2m:ae xmlns:m2m="http://www.onem2m.org/xml/protocols" rn="light_ae2">
  <api>A01.com.company.lightApp2</api>
  <rr>TRUE</rr>
  <poa>http://192.168.0.20:9090</poa>
  <acpi>/mn-cse/acp-805496226</acpi>
</m2m:ae>
```

HTTP Response:

```
201 Created
X-M2M-RSC: 2001
X-M2M-RI: mncse/18346
Content-Location: /mn-cse/ae-CAE340304042
```

8.7.4.3 Home gateway application MN-AE

The registration of MN-AE with MN-CSE could be implemented following procedure as below. Note that the access control policy Identifier (unstructured CSE-relative resourceID) which is assigned to MN-AE is [/mn-cse/acp-805496226](#).

HTTP Request:

```
POST ~/mn-cse/home_gateway?rcn=0 HTTP/1.1
Host: http://mn.provider.com:8080
X-M2M-Origin: /C
Content-Type: application/vnd.onem2m-res+xml;ty=2
X-M2M-RI: mncse/19347
```

```
<?xml version="1.0" encoding="UTF-8"?>
<m2m:ae xmlns:m2m="http://www.onem2m.org/xml/protocols" rn="gateway_ae">
  <api>A01.com.company.gatewayApp</api>
  <rr>FALSE</rr>
  <acpi>/mn-cse/acp-805496226</acpi>
</m2m:ae>
```

HTTP Response:

```
201 Created
X-M2M-RSC: 2001
X-M2M-RI: mncse/19347
Content-Location: /mn-cse/ae-CAE340303271
```

8.7.4.4 Smartphone application IN-AE

The registration of IN-AE with IN-CSE could be implemented following procedure as below. Note that the access control policy Identifier (unstructured CSE-relative resourceID) which is assigned to IN-AE is [/in-cse/acp-666957710](#).

HTTP Request:

```
POST ~/in-cse/server?rcn=0 HTTP/1.1
Host: http://mn.provider.com:8080
X-M2M-Origin: /C
Content-Type: application/vnd.onem2m-res+xml;ty=2
X-M2M-RI: incse/16346
```

```
<?xml version="1.0" encoding="UTF-8"?>
<m2m:ae xmlns:m2m="http://www.onem2m.org/xml/protocols" rn="smartphone_ae">
  <api>A01.com.company.lightControlApp</api>
  <rr>FALSE</rr>
  <acpi>/in-cse/acp-666957710</acpi>
</m2m:ae>
```

HTTP Response:

```
201 Created
X-M2M-RSC: 2001
X-M2M-RI: incse/16346
Content-Location: /in-cse/ae-CAE340304178
```

8.7.5 Containers creation

8.7.5.1 Create a container of ADN-AE1

The creation of container resource for ADN-AE1 could be implemented following procedure as below.

HTTP Request:

```
POST ~/mn-cse/home_gateway/light_ae1?rcn=0 HTTP/1.1
Host: http://mn.provider.com:8080
X-M2M-Origin: /mn-cse/Clight_ae1
Content-Type: application/vnd.onem2m-res+xml;ty=3
X-M2M-RI: mncse/13345

<m2m:cnt xmlns:m2m="http://www.onem2m.org/xml/protocols" rn="light">
</m2m:cnt>
```

HTTP Response:

```
201 Created
X-M2M-RSC: 2001
X-M2M-RI: mncse/13345
Content-Location: /mn-cse/cnt-582759912
```

8.7.5.2 Create a container of ADN-AE2

The creation of container resource for ADN-AE2 could be implemented following procedure as below.

HTTP Request:

```
POST ~/mn-cse/home_gateway/light_ae2?rcn=0 HTTP/1.1
Host: http://mn.provider.com:8080
X-M2M-Origin: /mn-cse/Clight_ae2
Content-Type: application/vnd.onem2m-res+xml;ty=3
X-M2M-RI: mncse/62345

<m2m:cnt xmlns:m2m="http://www.onem2m.org/xml/protocols" rn="light">
</m2m:cnt>
```

HTTP Response:

```
201 Created
X-M2M-RSC: 2001
X-M2M-RI: mncse/62345
Content-Location: /mn-cse/cnt-582769893
```

8.7.6 ContentInstances creation

8.7.6.1 Create a content instance of ADN-AE1

The creation of content instance resource under container of ADN-AE1 with initial content **OFF** could be implemented following procedure as below.

HTTP Request :

```
POST ~/mn-cse/home_gateway/light_ael/light?rcn=0 HTTP/1.1
Host: http://mn.provider.com:8080
X-M2M-Origin: /mn-cse/Clight_ael
Content-Type: application/vnd.onem2m-res+xml;ty=4
X-M2M-RI: mncse/24345

<m2m:cin xmlns:m2m="http://www.onem2m.org/xml/protocols">
  <con>OFF</con>
  <cnf>text/plain:0</cnf>
</m2m:cin>
```

HTTP Response :

```
201 Created
X-M2M-RSC: 2001
X-M2M-RI: mncse/24345
Content-Location: /mn-cse/cin-394798749
Content-Type: application/vnd.onem2m-res+xml
```

8.7.6.2 Create a content instance of ADN-AE2

The creation of content instance resource under container of ADN-AE2 with initial content `OFF` could be implemented following procedure as below.

HTTP Request :

```
POST ~/mn-cse/home_gateway/light_ae2/light?rcn=0 HTTP/1.1
Host: http://mn.provider.com:8080
X-M2M-Origin: /mn-cse/Clight_ael
Content-Type: application/vnd.onem2m-res+xml;ty=4
X-M2M-RI: mncse/22345

<m2m:cin xmlns:m2m="http://www.onem2m.org/xml/protocols">
  <con>OFF</con>
  <cnf>text/plain:0</cnf>
</m2m:cin>
```

HTTP Response :

```
201 Created
X-M2M-RSC: 2001
X-M2M-RI: mncse/22345
Content-Location: /mn-cse/cin-256599578
```

8.7.7 Groups creation

8.7.7.1 Create a group for updating all light states

The creation of group resource `group1` in MN-AE could be implemented following procedure as below. The group resource is created with two initial member id `0` and `1`.

HTTP Request :

```
POST ~/mn-cse/home_gateway/gateway_ae?rcn=0 HTTP/1.1
Host: http://mn.provider.com:8080
X-M2M-Origin: /mn-cse/Cgateway_ae
Content-Type: application/vnd.onem2m-res+xml;ty=9
X-M2M-RI: mncse/76905

<?xml version="1.0" encoding="UTF-8"?>
<m2m:grp xmlns:m2m="http://www.onem2m.org/xml/protocols" rn="containers_grp">
  <mt>3</mt>
  <mid>/mn-cse/cnt-582759912 /mn-cse/cnt-582769893</mid>
  <mnm>10</mnm>
</m2m:grp>
```


HTTP Response:

```
201 Created
X-M2M-RSC: 2001
X-M2M-RI: mncse/76905
Content-Location: /mn-cse/grp-977978327
```

8.7.7.2 Create a group for retrieval of all latest light states

The creation of group resource group2 in MN-AE could be implemented following procedure as below. The group resource is created with two initial member id 0 and 1.

HTTP Request:

```
POST ~/mn-cse/home_gateway/gateway_ae?rcn=0 HTTP/1.1
Host: http://mn.provider.com:8080
X-M2M-Origin: /mn-cse/Cgateway_ae
Content-Type: application/vnd.onem2m-res+xml;ty=9
X-M2M-RI: mncse/12980

<?xml version="1.0" encoding="UTF-8"?>
<m2m:grp xmlns:m2m="http://www.onem2m.org/xml/protocols" rn="lightstates_grp">
  <mt>4</mt>
  <mid>/mn-cse/cnt-582759912/1a /mn-cse/cnt-582769893/1a</mid>
  <mmn>10</mmn>
</m2m:grp>
```

HTTP Response:

```
201 Created
X-M2M-RSC: 2001
X-M2M-RI: mncse/12980
Content-Location: /mn-cse/grp-677974227
```

8.7.8 Subscriptions creation

8.7.8.1 Subscription to the content instance of ADN-AE1

When user creates a subscription resource, parameter *notification content type* (short for *nct*) is set to value 1 to indicate that all attributes of the subscribed resource will be notified to the subscriber.

ADN-AE1 creates a subscription resource including the notification URI set to the resource identifier of ADN-AE1 so that the ADN-AE1 could get notified whenever there are changes to the content instance of container in ADN-AE1 following procedures as below.

HTTP Request:

```
POST ~/mn-cse/home_gateway/light_ae1/light?rcn=0 HTTP/1.1
Host: http://mn.provider.com:8080
X-M2M-Origin: /mn-cse/Clight_ae1
Content-Type: application/vnd.onem2m-res+xml;ty=23
X-M2M-RI: mncse/67891

<?xml version="1.0" encoding="UTF-8"?>
<m2m:sub xmlns:m2m="http://www.onem2m.org/xml/protocols" rn="lightstate_sub1">
  <enc>
    <net>3</net>
  </enc>
  <nu>/mn-cse/ae-CAE340304071</nu>
  <nct>1</nct>
</m2m:sub>
```

HTTP Response:

```
201 Created
X-M2M-RSC: 2001
```

```
X-M2M-RI: mncse/67891
Content-Location: /mn-cse/sub-856593979
```

8.7.8.2 Subscription to the content instance of ADN-AE2

When user creates a subscription resource, parameter *notification content type* (short for *nct*) is set to value 1 to indicate that all attributes of the subscribed resource will be notified to the subscriber.

ADN-AE2 creates a subscription resource including the notification URI set to the resource identifier of ADN-AE2 so that the ADN-AE2 could get notified whenever there are changes to the content instance of container in ADN-AE2 following procedures as below.

HTTP Request :

```
POST /~/mn-cse/home_gateway/light_ae2/light?rcn=0 HTTP/1.1
Host: http://mn.provider.com:8080
X-M2M-Origin: /mn-cse/Clight_ae2
Content-Type: application/vnd.onem2m-res+xml;ty=23
X-M2M-RI: mncse/29387

<?xml version="1.0" encoding="UTF-8"?>
<m2m:sub xmlns:m2m="http://www.onem2m.org/xml/protocols" rn="lightstate_sub2">
  <enc>
    <net>3</net>
  </enc>
  <nu>/mn-cse/ae-CAE340304042</nu>
  <nct>1</nct>
</m2m:sub>
```

HTTP Response :

```
201 Created
X-M2M-RSC: 2001
X-M2M-RI: mncse/29387
Content-Location: /mn-cse/sub-856463728
```

8.7.9 Discovery

8.7.9.1 Introduction

The discovery functionality in oneM2M service platform could be implemented using RETRIEVE operation along with one or multiple filter criteria parameters.

In order to enable the retrieve operation for resource discovery, parameter *filterUsage* (short for *fu*) has to be presented in the RETRIEVE request as a query string.

In addition, parameter *resource type* (short for *rty*) could be used as *filterCriteria* condition for the discovery of single light and group light members. The parameter *discovery result type* (short for *drt*) is set to 2 to indicate that the format of elements of URIList is unstructured. The detailed discovery procedures are presented in clauses 8.7.9.2 and 8.7.9.3.

8.7.9.2 Discovery of single light registered with MN-CSE

The discovery of single light registered with MN-CSE could be implemented by *in-ae* following procedures as below.

HTTP Request :

```
GET /~/mn-cse/home_gateway?fu=1&rty=3&drt=2 HTTP/1.1
Host: http://in.provider.com:8080
X-M2M-Origin: /in-cse/Csmartphone_ae
X-M2M-RI: mncse/99882
Accept: application/xml
```

HTTP Response :

```
200 OK
X-M2M-RSC: 2000
X-M2M-RI: mncse/99882
```

```
Content-Type: application/xml

<?xml version="1.0" encoding="UTF-8"?>
<m2m:uril xmlns:m2m="http://www.onem2m.org/xml/protocols">
  /mn-cse/cnt-582759912
  /mn-cse/cnt-582769893
</m2m:uril>
```

User using smartphone application can retrieve a list of URIs representing containers registered with MN-CSE from the response message, e.g. `/mn-cse/cnt-582759912` which is the URI of container created in ADN-AE1. The retrieved URIs of the discovered containers could be used for the group member update operations.

8.7.9.3 Discovery of groups located in MN-CSE

The discovery of groups located in MN-CSE could be implemented by *in-ae* following procedures as below.

HTTP Request :

```
GET ~/mn-cse/home_gateway?fu=1&rty=9&drt=2 HTTP/1.1
Host: http://in.provider.com:8080
X-M2M-Origin: /in-cse/Csmartphone_ae
X-M2M-RI: mncse/15001
Accept: application/xml
```

HTTP Response :

```
200 OK
X-M2M-RSC: 2000
X-M2M-RI: mncse/15001
Content-Type: application/xml

<?xml version="1.0" encoding="UTF-8"?>
<m2m:uril xmlns:m2m="http://www.onem2m.org/xml/protocols">
  /mn-cse/grp-977978327
  /mn-cse/grp-677974227
</m2m:uril>
```

User using smartphone application can retrieve a list of URIs representing group resources located in MN-CSE from the response message, e.g. `/mn-cse/grp-977978327` which is the URI of group group1. The retrieved URIs of the discovered group resource could also be used for the group member update operations.

8.7.10 Latest content instances retrieval

8.7.10.1 Introduction

User could retrieve the latest light states via sending a latest content instance RETRIEVE request attached with a virtual resource *latest* (short for *la*).

User could also retrieve a group of latest light states via sending a group RETRIEVE request attached with a virtual resource *fanOutPoint* (short for *fopt*).

8.7.10.2 Retrieve the latest content instance of ADN-AE1

The latest content instance of container *light* in ADN-AE1 could be retrieved following procedures as below.

HTTP Request :

```
GET ~/mn-cse/home_gateway/light_ae1/light/la HTTP/1.1
Host: http://in.provider.com:8080
X-M2M-Origin: /in-cse/Csmartphone_ae
X-M2M-RI: mncse/11223
Accept: application/xml
```

HTTP Response :

```
200 OK
X-M2M-RSC: 2000
X-M2M-RI: mncse/11223
Content-Type: application/vnd.onem2m-res+xml
```

```
<?xml version="1.0" encoding="UTF-8"?>
<m2m:cin
  xmlns:m2m="http://www.onem2m.org/xml/protocols" rn="cin-394798749">
  <ty>4</ty>
  <ri>cin-394798749</ri>
  <pi>cnt-181049109</pi>
  <ct>20150925T045938</ct>
  <lt>20150925T045938</lt>
  <et>20151107T154802</et>
  <st>0</st>
  <cnf>text/plain:0</cnf>
  <cs>3</cs>
  <con>OFF</con>
</m2m:cin>
```

8.7.10.3 Retrieve the latest content instance of ADN-AE2

The latest content instance of container *light* in ADN-AE2 could be retrieved following procedures as below.

HTTP Request :

```
GET /~/mn-cse/home_gateway/light_ae2/light/la HTTP/1.1
Host: http://mn.provider.com:8080
X-M2M-Origin: /in-cse/Csmartphone_ae
X-M2M-RI: mncse/22336
Accept: application/xml
```

HTTP Response :

```
200 OK
X-M2M-RSC: 2000
X-M2M-RI: mncse/22336
Content-Type: application/vnd.onem2m-res+xml
```

```
<?xml version="1.0" encoding="UTF-8"?>
<m2m:cin
  xmlns:m2m="http://www.onem2m.org/xml/protocols" rn="cin-256599578">
  <ty>4</ty>
  <ri>cin-256599578</ri>
  <pi>cnt-790965889</pi>
  <ct>20150925T050515</ct>
  <lt>20150925T050515</lt>
  <et>20151107T154802</et>
  <st>0</st>
  <cnf>text/plain:0</cnf>
  <cs>3</cs>
  <con>OFF</con>
</m2m:cin>
```

8.7.10.4 Retrieve a group of latest content instances for all light states

A group of latest content instances could be achieved via sending a *group* RETRIEVE request following procedures as below.

HTTP Request :

```
GET /~/mn-cse/home_gateway/gateway_ae/lightstates_grp/fopt HTTP/1.1
Host: http://in.provider.com:8080
X-M2M-Origin: /in-cse/Csmartphone_ae
X-M2M-RI: mncse/55667
```

Accept: application/xml

HTTP Response:

200 OK
 X-M2M-RSC: 2000
 X-M2M-RI: mncse/55667
 Content-Type: application/xml

```
<?xml version="1.0" encoding="UTF-8"?>
<m2m:agr
  xmlns:m2m="http://www.onem2m.org/xml/protocols">
  <m2m:rsp>
    <rsc>2000</rsc>
    <pc>
      <m2m:cin rn="cin-394798749">
        <ty>4</ty>
        <ri>cin-394798749</ri>
        <pi>cnt-181049109</pi>
        <ct>20150925T045938</ct>
        <lt>20150925T045938</lt>
        <et>20151107T154802</et>
        <st>0</st>
        <cnf>text/plain:0</cnf>
        <cs>3</cs>
        <con>OFF</con>
      </m2m:cin>
    </pc>
    <to>/in-cse/ae-CAE340304178</to>
    <fr>/mn-cse/cnt-582759912/la</fr>
  </m2m:rsp>
  <m2m:rsp>
    <rsc>2000</rsc>
    <pc>
      <m2m:cin rn="cin-256599578">
        <ty>4</ty>
        <ri>cin-256599578</ri>
        <pi>cnt-790965889</pi>
        <ct>20150925T050515</ct>
        <lt>20150925T050515</lt>
        <et>20151107T154802</et>
        <st>0</st>
        <cnf>text/plain:0</cnf>
        <cs>3</cs>
        <con>OFF</con>
      </m2m:cin>
    </pc>
    <to>/in-cse/ae-CAE340304178</to>
    <fr>/mn-cse/cnt-582769893/la</fr>
  </m2m:rsp>
</m2m:agr>
```

8.7.11 Light state modification

8.7.11.1 Introduction

Once the smartphone application in-ae is registered with IN-CSE, the in-ae could be granted for accessing resources including containers located in IN-CSE so that smartphone application users could send light control commands for modifying the light states.

When smartphone application user makes a change on the light state via the smartphone user interface, the in-ae performs a new content instance creation procedure carrying the new state.

The modification of single light state could be implemented by creating a new content instance resource for the specific container with access control policy *acp1* (*gateway_acp*) while the modification of all light states could be implemented by creating a new content instance resource for each member of group (*lightstates_grp*) with access control policy *acp1* (*gateway_acp*). The implementation of the latter case is to create a `<fanOutPoint>` resource with the content of new content instance resource for the group *lightstates_grp* so that the content of all members of the group could be updated together.

8.7.11.2 Create a content instance under container of ADN-AE1

HTTP Request :

```
POST ~/mn-cse/home_gateway/light_ae1/light?rcn=0 HTTP/1.1
Host: http://mn.provider.com:8080
X-M2M-Origin: /in-cse/Csmartphone_ae
Content-Type: application/vnd.onem2m-res+xml;ty=4
X-M2M-RI: mncse/11123
```

```
<m2m:cin xmlns:m2m="http://www.onem2m.org/xml/protocols">
  <con>ON</con>
  <cnf>text/plain:0</cnf>
</m2m:cin>
```

HTTP Response :

```
201 Created
X-M2M-RSC: 2001
X-M2M-RI: mncse/11123
Content-Location: /mn-cse/cin-789356234
```

8.7.11.3 Create a content instance under container of ADN-AE2

HTTP Request :

```
POST ~/mn-cse/home_gateway/light_ae2/light?rcn=0 HTTP/1.1
Host: http://mn.provider.com:8080
X-M2M-Origin: /in-cse/Csmartphone_ae
Content-Type: application/vnd.onem2m-res+xml;ty=4
X-M2M-RI: mncse/12222
```

```
<m2m:cin xmlns:m2m="http://www.onem2m.org/xml/protocols">
  <con>ON</con>
  <cnf>text/plain:0</cnf>
</m2m:cin>
```

HTTP Response :

```
201 Created
X-M2M-RSC: 2001
X-M2M-RI: mncse/12222
Content-Location: /mn-cse/cin-237896783
```

8.7.11.4 Update the state of all lights using group fanout

HTTP Request :

```
POST ~/mn-cse/home_gateway/gateway_ae/lightstates_grp/fopt HTTP/1.1
Host: http://mn.provider.com:8080
X-M2M-Origin: /in-cse/Csmartphone_ae
Content-Type: application/vnd.onem2m-res+xml
X-M2M-RI: mncse/33344
```

```
<?xml version="1.0" encoding="UTF-8"?>
<m2m:cin xmlns:m2m="http://www.onem2m.org/xml/protocols">
  <con>ON</con>
  <cnf>text/plain:0</cnf>
</m2m:cin>
```

HTTP Response:

```

200 OK
X-M2M-RSC: 2000
X-M2M-RI: mncse/33344
Content-Type: application/xml

<?xml version="1.0" encoding="UTF-8"?>
<m2m:agr
  xmlns:m2m="http://www.onem2m.org/xml/protocols">
  <m2m:rsp>
    <rsc>2001</rsc>
    <rqi>ae/33344</rqi>
    <pc/>
    <to>/in-cse/ae-CAE340304178</to>
    <fr>/mn-cse/cnt-582759912</fr>
  </m2m:rsp>
  <m2m:rsp>
    <rsc>2001</rsc>
    <rqi>ae/33344</rqi>
    <pc/>
    <to>/in-cse/ae-CAE340304178</to>
    <fr>/mn-cse/cnt-582769893</fr>
  </m2m:rsp>
</m2m:agr>

```

8.7.12 Notifications

8.7.12.1 Introduction

Each time a content instance is created under container of ADN-AE, then a latest notification containing the whole created content instance is posted to the targeted subscriber i.e. AE application *adn-ae1* or *adn-ae2*, that can actuate into the light the new state received as notification, respectively.

8.7.12.2 Post a notification to ADN-AE1

HTTP Request:

```

POST / HTTP/1.1
Host: http://192.168.0.10:9090
X-M2M-Origin: /mn-cse
X-M2M-RI: notif/12345
Content-Type: application/vnd.onem2m-ntfy+xml

<?xml version="1.0" encoding="UTF-8"?>
<m2m:sgn
  xmlns:m2m="http://www.onem2m.org/xml/protocols">
  <nev>
    <rep>
      <cin>
        <con>ON</con>
        <cnf>text/plain:0</cnf>
      </cin>
      <rss>201</rss>
    </rep>
  </nev>
  <sur>
    /mn-cse/sub-856593979
  </sur>
</m2m:sgn>

```

HTTP Response:

```
200 OK
```

```
X-M2M-RSC: 2000
X-M2M-RI: notif/12345
```

8.7.12.3 Post a notification to ADN-AE2

HTTP Request:

```
POST / HTTP/1.1
Host: http://192.168.0.20:9090
X-M2M-Origin: /mn-cse
X-M2M-RI: notif/12346
Content-Type: application/vnd.onem2m-ntfy+xml

<?xml version="1.0" encoding="UTF-8"?>
<m2m:sgn
  xmlns:m2m="http://www.onem2m.org/xml/protocols">
  <nev>
    <rep>
      <cin>
        <con>ON</con>
        <cnf>text/plain:0</cnf>
      </cin>
      <rss>201</rss>
    </rep>
  </nev>
  <sur>
    /mn-cse/sub-856463728
  </sur>
</m2m:sgn>
```

HTTP Response:

```
200 OK
X-M2M-RSC: 2000
X-M2M-RI: notif/12346
```

9 Conclusion

A remote light control use case is proposed to control remotely light lamps using smartphone application which is granted to access the oneM2M service platform resources. The current use case is done by following the high level procedures such as registration of smart devices, gateway with the oneM2M service platform, container and content instances creation, group resource creation, content instance retrieval, content instances subscription and notifications etc.

The practice of current remote lights control use case mapping into an oneM2M service platform leads to several attention points as follows.

- JSON serialization and CoAP binding of oneM2M primitives are intended to be covered in other use cases;
- The current use case will be updated to oneM2M Release 2.0.

Annex A: Reading Resources

Annex A.1 Introduction

The information of resources created during each call flow of current use case can be retrieved via smartphone application IN-AE initiates a RETRIEVE request to the target resources as following.

Annex A.2 CSE resources

Annex A.2.1 IN-CSE

HTTP Request :

```
GET /~/in-cse/server HTTP/1.1
Host: http://in.provider.com:8080
X-M2M-Origin: /mn-cse/Cgateway_ae
X-M2M-RI: incse/12345
Accept: application/xml
```

HTTP Response :

```
200 OK
X-M2M-RSC: 2000
Content-Type: application/vnd.onem2m-res+xml
```

```
<?xml version="1.0" encoding="UTF-8"?>
<m2m:cb
  xmlns:m2m="http://www.onem2m.org/xml/protocols" rn="server">
  <ty>5</ty>
  <ri>/in-cse</ri>
  <ct>20150925T045938</ct>
  <lt>20150925T045938</lt>
  <acpi>/in-cse/acp-666957710</acpi>
  <cst>1</cst>
  <csi>in-cse</csi>
  <srt>1 2 3 4 5 9 14 15 16 17 23</srt>
  <poa>http://in.provider.com:8080</poa>
</m2m:cb>
```

Annex A.2.2 MN-CSE

HTTP Request :

```
GET /~/in-cse/server/home_gateway HTTP/1.1
Host: http://mn.provider.com:8080
X-M2M-Origin: /in-cse/Csmartphone_ae
X-M2M-RI: incse/12346
Accept: application/xml
```

HTTP Response :

```
200 OK
X-M2M-RSC: 2000
Content-Type: application/vnd.onem2m-res+xml
```

```
<?xml version="1.0" encoding="UTF-8"?>
<m2m:csr xmlns:m2m="http://www.onem2m.org/xml/protocols" rn="home_gateway">
  <ty>16</ty>
  <ri>csr-299409504</ri>
  <pi>/in-cse</pi>
  <ct>20150925T045938</ct>
```

```

<lt>20150925T045938</lt>
<et>20171005T105550</et>
<acpi>/in-cse/acp-666957710</acpi>
<poa>http://mn.provider.com:8080</poa>
<cb>mn.provider.com/mn-cse</cb>
<csi>/mn-cse</csi>
<rr>TRUE</rr>
</m2m:csr>

```

Annex A.3 Gateway device application MN-AE

HTTP Request:

```

GET /~/mn-cse/home_gateway/gateway_ae HTTP/1.1
Host: http://mn.provider.com:8080
X-M2M-Origin: /in-cse/Csmartphone_ae
X-M2M-RI: mncse/12347
Accept: application/xml

```

HTTP Response:

```

200 OK
X-M2M-RSC: 2000
Content-Type: application/vnd.onem2m-res+xml

<?xml version="1.0" encoding="UTF-8" standalone="yes"?>
<m2m:ae xmlns:m2m="http://www.onem2m.org/xml/protocols" rn="gateway_ae">
  <ty>2</ty>
  <ri>ae-CAE340303271</ri>
  <pi>/mn-cse</pi>
  <ct>20150925T052438</ct>
  <lt>20150925T052438</lt>
  <et>20171005T105550</et>
  <acpi>/mn-cse/acp-805496226</acpi>
  <api>A01.com.company.gatewayApp</api>
  <aei>CAE340303271</aei>
  <rr>FALSE</rr>
</m2m:ae>

```

Annex A.4. Light device applications

Annex A.4.1 ADN-AE1

HTTP Request:

```

GET /~/mn-cse/home_gateway/light_ae1 HTTP/1.1
Host: http://mn.provider.com:8080
X-M2M-Origin: /mn-cse/Cgateway_ae
X-M2M-RI: mncse/12347
Accept: application/xml

```

HTTP Response:

```

200 OK
X-M2M-RSC: 2000
Content-Type: application/vnd.onem2m-res+xml

<?xml version="1.0" encoding="UTF-8" standalone="yes"?>
<m2m:ae xmlns:m2m="http://www.onem2m.org/xml/protocols" rn="light_ae1">
  <ty>2</ty>
  <ri>ae-CAE340304071</ri>
  <pi>/mn-cse</pi>
  <ct>20150925T052455</ct>
  <lt>20150925T052455</lt>
  <et>20171005T105550</et>
  <acpi>/mn-cse/acp-805496226</acpi>

```

```

    <api>A01.com.company.lightApp1</api>
    <aei>CAE340304071</aei>
    <rr>TRUE</rr>
  </m2m:ae>

```

Annex A.4.2 ADN-AE2

HTTP Request:

```

GET /~/mn-cse/home_gateway/light_ae2 HTTP/1.1
Host: http://mn.provider.com:8080
X-M2M-Origin: /mn-cse/Cgateway_ae
X-M2M-RI: mncse/12348
Accept: application/xml

```

HTTP Response:

```

200 OK
X-M2M-RSC: 2000
Content-Type: application/vnd.onem2m-res+xml

```

```

<?xml version="1.0" encoding="UTF-8" standalone="yes"?>
<m2m:ae xmlns:m2m="http://www.onem2m.org/xml/protocols" rn="light_ae2">
  <ty>2</ty>
  <ri>ae-CAE340304042</ri>
  <pi>/mn-cse</pi>
  <ct>20150925T052542</ct>
  <lt>20150925T052542</lt>
  <et>20171005T105550</et>
  <acpi>/mn-cse/acp-805496226</acpi>
  <api>A01.com.company.lightApp2</api>
  <aei>CAE340304042</aei>
  <rr>TRUE</rr>
</m2m:ae>

```

Annex A.5 Smartphone application IN-AE

HTTP Request:

```

GET /~/in-cse/server/smartphone_ae HTTP/1.1
Host: http://in.provider.com:8080
X-M2M-Origin: /mn-cse/Cgateway_ae
X-M2M-RI: incse/12349
Accept: application/xml

```

Response status:

```

200 OK
X-M2M-RSC: 2000
Content-Type: application/vnd.onem2m-res+xml

```

Response message:

```

<?xml version="1.0" encoding="UTF-8" standalone="yes"?>
<m2m:ae xmlns:m2m="http://www.onem2m.org/xml/protocols" rn="smartphone_ae">
  <ty>2</ty>
  <ri>ae-CAE340304178</ri>
  <pi>/in-cse</pi>
  <ct>20150925T052622</ct>
  <lt>20150925T052622</lt>
  <et>20171005T105550</et>
  <acpi>/in-cse/acp-666957710</acpi>
  <api>A01.com.company.lightControlApp</api>
  <aei>CAE340304178</aei>

```

```
<rr>FALSE</rr>
</m2m:ae>
```

Annex A.6 Access control policy

HTTP Request:

```
GET ~/mn-cse/home_gateway/gateway_acp HTTP/1.1
Host: http://mn.provider.com:8080
X-M2M-Origin: /mn-cse/Cgateway_ae
X-M2M-RI: mncse/12350
Accept: application/xml
```

HTTP Response:

```
200 OK
X-M2M-RSC: 2000
Content-Type: application/vnd.onem2m-res+xml

<m2m:acp xmlns:m2m="http://www.onem2m.org/xml/protocols" rn="gateway_acp">
  <ty>1</ty>
  <ri>acp-805496226</ri>
  <pi>/mn-cse</pi>
  <ct>20150925T050238</ct>
  <lt>20150925T050238</lt>
  <et>20171005T105550</et>
  <pv>
    <acr>
      <acor>/in-cse/home_gateway /mn-cse/Cgateway_ae /mn-cse/Clight_ae1
/mn-cse/Clight_ae2 /in-cse/Csmartphone_ae</acor>
      <acop>63</acop>
    </acr>
  </pv>
  <pvs>
    <acr>
      <acor>/in-cse/home_gateway /mn-cse/Cgateway_ae /mn-cse/Clight_ae1
/mn-cse/Clight_ae2 /in-cse/Csmartphone_ae</acor>
      <acop>51</acop>
    </acr>
  </pvs>
</m2m:acp>
```

Annex A.7 Containers

Annex A.7.1 Container under ADN-AE1

HTTP Request:

```
GET ~/mn-cse/home_gateway/light_ae1/light HTTP/1.1
Host: http://mn.provider.com:8080
X-M2M-Origin: /mn-cse/Cgateway_ae
X-M2M-RI: mncse/12351
Accept: application/xml
```

HTTP Response:

```
200 OK
X-M2M-RSC: 2000
Content-Type: application/vnd.onem2m-res+xml

<?xml version="1.0" encoding="UTF-8" standalone="yes"?>
<m2m:cnt xmlns:m2m="http://www.onem2m.org/xml/protocols" rn="light">
  <ty>3</ty>
  <ri>cnt-582759912</ri>
  <pi>/mn-cse/ae-CAE340304071</pi>
```

```

<ct>20150925T052955</ct>
<lt>20150925T052955</lt>
<et>20171005T105550</et>
<acpi>/mn-cse/acp-805496226</acpi>
<st>0</st>
<cni>1</cni>
<cbs>3</cbs>
</m2m:cnt>

```

Annex A.7.2 Container under ADN-AE2

HTTP Request :

```

GET /~/mn-cse/home_gateway/light_ae2/light HTTP/1.1
Host: http://mn.provider.com:8080
X-M2M-Origin: /mn-cse/Cgateway_ae
X-M2M-RI: mncse/12352
Accept: application/xml

```

HTTP Response :

```

200 OK
X-M2M-RSC: 2000
Content-Type: application/vnd.onem2m-res+xml

<?xml version="1.0" encoding="UTF-8" standalone="yes"?>
<m2m:cnt xmlns:m2m="http://www.onem2m.org/xml/protocols" rn="light">
  <ty>3</ty>
  <ri>cnt-582769893</ri>
  <pi>/mn-cse/ae-CAE340304042</pi>
  <ct>20150925T053135</ct>
  <lt>20150925T053135</lt>
  <et>20171005T105550</et>
  <acpi>/mn-cse/acp-805496226</acpi>
  <st>0</st>
  <cni>1</cni>
  <cbs>3</cbs>
</m2m:cnt>

```

Annex A.8 ContentInstances

Annex A.8.1 Latest contentInstance in ADN-AE1

HTTP Request :

```

GET /~/mn-cse/home_gateway/light_ae1/light/la HTTP/1.1
Host: http://mn.provider.com:8080
X-M2M-Origin: /mn-cse/Cgateway_ae
X-M2M-RI: mncse/12353
Accept: application/xml

```

HTTP Response :

```

200 OK
X-M2M-RSC: 2000
Content-Type: application/vnd.onem2m-res+xml

<?xml version="1.0" encoding="UTF-8"?>
<m2m:cin
  xmlns:m2m="http://www.onem2m.org/xml/protocols" rn="cin-394798749">
  <ty>4</ty>
  <ri>cin-394798749</ri>
  <pi>/mn-cse/cnt-582759912</pi>
  <ct>20150925T053225</ct>

```

```

<lt>20150925T053225</lt>
<et>20171005T105550</et>
<st>0</st>
<cnf>text/plain:0</cnf>
<cs>2</cs>
<con>ON</con>
</m2m:cin>

```

Annex A.8.2 Latest contentInstance in ADN-AE2

HTTP Request:

```

GET /~/mn-cse/home_gateway/light_ae2/light/la HTTP/1.1
Host: http://mn.provider.com:8080
X-M2M-Origin: /mn-cse/Cgateway_ae
X-M2M-RI: mncse/12354
Accept: application/xml

```

HTTP Response:

```

200 OK
X-M2M-RSC: 2000
Content-Type: application/vnd.onem2m-res+xml

```

```

<?xml version="1.0" encoding="UTF-8"?>
<m2m:cin
  xmlns:m2m="http://www.onem2m.org/xml/protocols" rn="cin-256599578">
  <ty>4</ty>
  <ri>cin-256599578</ri>
  <pi>/mn-cse/cnt-582769893</pi>
  <ct>20150925T053425</ct>
  <lt>20150925T053425</lt>
  <et>20171005T105550</et>
  <st>0</st>
  <cnf>text/plain:0</cnf>
  <cs>2</cs>
  <con>ON</con>
</m2m:cin>

```

Annex A.9 Subscriptions

Annex A.9.1 Subscription to container in ADN-AE1

HTTP Request:

```

GET /~/mn-cse/home_gateway/light_ae1/light/lightstate_sub1 HTTP/1.1
Host: http://mn.provider.com:8080
X-M2M-Origin: /mn-cse/Cgateway_ae
X-M2M-RI: mncse/12355
Accept: application/xml

```

HTTP Response:

```

200 OK
X-M2M-RSC: 2000
Content-Type: application/vnd.onem2m-res+xml

```

```

<?xml version="1.0" encoding="UTF-8" standalone="yes"?>
<m2m:sub xmlns:m2m="http://www.onem2m.org/xml/protocols" rn="lightstate_sub1">
  <ty>23</ty>
  <ri>sub-856593979</ri>
  <pi>/mn-cse/cnt-582759912</pi>
  <ct>20150926T052955</ct>
  <lt>20150926T052955</lt>

```

```

    <et>20171005T105550</et>
    <acpi>/mn-cse/acp-805496226</acpi>
  <enc>
    <net>3</net>
  </enc>
  <nu>/mn-cse/ae-CAE340304071</nu>
  <nct>1</nct>
</m2m:sub>

```

Annex A.9.2 Subscription to container in ADN-AE2

HTTP Request :

```

GET /~/mn-cse/home_gateway/light_ae2/light/lightstate_sub2 HTTP/1.1
Host: http://mn.provider.com:8080
X-M2M-Origin: /mn-cse/Cgateway_ae
X-M2M-RI: mncse/12356
Accept: application/xml

```

HTTP Response :

```

200 OK
X-M2M-RSC: 2000
Content-Type: application/vnd.onem2m-res+xml

<?xml version="1.0" encoding="UTF-8" standalone="yes"?>
<m2m:sub xmlns:m2m="http://www.onem2m.org/xml/protocols" rn="lightstate_sub2">
  <ty>23</ty>
  <ri>sub-856463728</ri>
  <pi>/mn-cse/cnt-582759912</pi>
  <ct>20150926T053055</ct>
  <lt>20150926T053055</lt>
  <et>20171005T105550</et>
  <acpi>/mn-cse/acp-805496226</acpi>
  <enc>
    <net>3</net>
  </enc>
  <nu>/mn-cse/ae-CAE340304042</nu>
  <nct>1</nct>
</m2m:sub>

```

Annex A.10 Groups

Annex A.10.1 Group1

HTTP Request :

```

GET /~/mn-cse/home_gateway/gateway_ae/containers_grp HTTP/1.1
Host: http://mn.provider.com:8080
X-M2M-Origin: /in-cse/Csmartphone_ae
X-M2M-RI: mncse/12357
Accept: application/xml

```

HTTP Response :

```

200 OK
X-M2M-RSC: 2000
Content-Type: application/vnd.onem2m-res+xml

<?xml version="1.0" encoding="UTF-8"?>
<m2m:grp xmlns:m2m="http://www.onem2m.org/xml/protocols" rn="containers_grp">
  <ty>9</ty>
  <ri>grp-977978327</ri>
  <pi>/mn-cse/ae-CAE340303271</pi>
  <ct>20151004T045954</ct>

```

```

<lt>20151004T045954</lt>
<et>20171005T105550</et>
<acpi>/mn-cse/acp-805496226 /mn-cse/acp-805496226</acpi>
<mt>3</mt>
<cnm>2</cnm>
<mnrm>10</mnrm>
<mid>/mn-cse/cnt-582759912 /mn-cse/cnt-582769893</mid>
<mtv>true</mtv>
<csy>1</csy>
<fopt>/mn-cse/grp-977978327/fopt</fopt>
</m2m:grp>

```

Annex A.10.2 Group2

HTTP Request:

```

GET /~/mn-cse/home_gateway/gateway_ae/lightstates_grp HTTP/1.1
Host: http://mn.provider.com:8080
X-M2M-Origin: /in-cse/Csmartphone_ae
X-M2M-RI: mncse/12358
Accept: application/xml

```

HTTP Response:

```

200 OK
X-M2M-RSC: 2000
Content-Type: application/vnd.onem2m-res+xml

```

```

<?xml version="1.0" encoding="UTF-8"?>
  <m2m:grp xmlns:m2m="http://www.onem2m.org/xml/protocols"
  rn="lightstates_grp">
    <ty>9</ty>
    <ri>grp-677974227</ri>
    <pi>/mn-cse/ae-CAE340303271</pi>
    <ct>20151004T044954</ct>
    <lt>20151004T044954</lt>
    <acpi>/mn-cse/acp-805496226 /mn-cse/acp-805496226</acpi>
    <et>20171005T105550</et>
    <mt>4</mt>
    <cnm>2</cnm>
    <mnrm>10</mnrm>
    <mid>/mn-cse/cnt-582759912/la /mn-cse/cnt-582769893/la</mid>
    <mtv>true</mtv>
    <csy>1</csy>
    <fopt>/mn-cse/grp-677974227/fopt</fopt>
  </m2m:grp>

```

History

Document history		
V1.0.0	March 2016	Publication