

ETSI EN 301 840-1 V1.1.1 (2001-06)

European Standard (Telecommunications series)

**Electromagnetic compatibility
and Radio spectrum Matters (ERM);
Digital radio microphones operating in the CEPT
Harmonized band 1 785 MHz to 1 800 MHz;
Part 1: Technical characteristics and
methods of measurement**



Reference

DEN/ERM-RP08-0308-1

Keywords

radio, radio mic, testing, audio, digital

ETSI

650 Route des Lucioles
F-06921 Sophia Antipolis Cedex - FRANCE

Tel.: +33 4 92 94 42 00 Fax: +33 4 93 65 47 16

Siret N° 348 623 562 00017 - NAF 742 C
Association à but non lucratif enregistrée à la
Sous-Préfecture de Grasse (06) N° 7803/88

Important notice

Individual copies of the present document can be downloaded from:

<http://www.etsi.org>

The present document may be made available in more than one electronic version or in print. In any case of existing or perceived difference in contents between such versions, the reference version is the Portable Document Format (PDF). In case of dispute, the reference shall be the printing on ETSI printers of the PDF version kept on a specific network drive within ETSI Secretariat.

Users of the present document should be aware that the document may be subject to revision or change of status. Information on the current status of this and other ETSI documents is available at <http://www.etsi.org/tb/status/>

If you find errors in the present document, send your comment to:
editor@etsi.fr

Copyright Notification

No part may be reproduced except as authorized by written permission.
The copyright and the foregoing restriction extend to reproduction in all media.

© European Telecommunications Standards Institute 2001.
All rights reserved.

Contents

Intellectual Property Rights	6
Foreword.....	6
Introduction.....	6
1 Scope.....	8
2 References.....	9
3 Definitions, symbols and abbreviations	9
3.1 Definitions	9
3.2 Symbols	10
3.3 Abbreviations.....	10
4 Functional characteristics.....	11
4.1 Radio microphone descriptions	11
4.2 In ear monitoring.....	11
5 General.....	11
5.1 Presentation of equipment for testing purposes.....	11
5.1.1 Choice of model for testing	12
5.1.1.1 Testing of multi-channel equipment	12
5.1.1.2 Testing of equipment without a permanent external RF port	12
5.1.1.2.1 Equipment with a permanent internal RF port	12
5.1.1.2.2 Equipment with a temporary RF port	12
5.2 Mechanical and electrical design.....	13
5.2.1 General.....	13
5.2.2 Controls.....	13
5.2.3 Performance testing with Integral antenna	13
5.2.4 Marking (equipment identification)	13
5.3 Interpretation of the measurement results.....	13
6 Test conditions, power sources and ambient conditions	14
6.1 Normal and extreme test-conditions	14
6.2 Test power source.....	14
6.3 Normal test conditions.....	14
6.3.1 Normal temperature and humidity	14
6.3.2 Normal test power source voltage.....	14
6.3.2.1 Mains voltage.....	14
6.3.2.2 Nickel-cadmium cells	15
6.3.2.3 Other power sources	15
6.4 Extreme test conditions.....	15
6.4.1 Extreme temperatures.....	15
6.4.1.1 Procedures for tests at extreme temperatures	15
6.4.2 Extreme test power source voltages	15
6.4.2.1 Mains voltage.....	15
6.4.2.2 Re-chargeable battery power sources	15
6.4.2.3 Power sources using other types of batteries.....	16
6.4.2.4 Other power sources	16
7 General conditions	17
7.1 Normal test modulation	17
7.2 Artificial antenna.....	18
7.3 Test fixture.....	18
7.4 Test site and general arrangements for radiated measurements.....	18
7.5 Arrangement for test signals at the input of the transmitter	18
8 Methods of measurement and limits for transmitter parameters	19
8.1 Frequency error.....	19
8.1.1 Definition	19

8.1.2	Method of measurement.....	19
8.1.3	Limit	19
8.2	Carrier power	19
8.2.1	Definition	19
8.2.2	Method of measurement for equipment without integral antenna.....	20
8.2.3	Method of measurement for equipment with integral antenna.....	20
8.2.3.1	Method of measurement under normal test conditions	20
8.2.3.2	Method of measurement under extreme test conditions.....	20
8.2.4	Limit	21
8.3	Channel bandwidth.....	21
8.3.1	Definition	21
8.3.2	Measurement of Necessary Bandwidth (BN)	21
8.3.3	Limits.....	22
8.4	Spurious emissions.....	22
8.4.1	Definition	22
8.4.2	Method of measuring the effective radiated power	22
8.4.3	Limits.....	23
8.4.4	Measuring receiver.....	23
9	Receiver	23
9.1	Spurious emissions.....	23
9.1.1	Definitions.....	23
9.1.2	Method of measuring the power level in a specified load	24
9.1.3	Method of measuring the effective radiated power of the enclosure.....	24
9.1.4	Method of measuring the effective radiated power	24
9.1.5	Limits.....	25
10	Measurement uncertainty	25
Annex A (normative): Radiated measurement		26
A.1	Test sites and general arrangements for measurements involving the use of radiated fields	26
A.1.1	Anechoic chamber.....	26
A.1.2	Anechoic chamber with a conductive ground plane	27
A.1.3	Open Area Test Site (OATS).....	28
A.1.4	Test antenna	29
A.1.5	Substitution antenna	29
A.1.6	Measuring antenna	30
A.1.7	Stripline arrangement	30
A.1.7.1	General.....	30
A.1.7.2	Description	30
A.1.7.3	Calibration.....	30
A.1.7.4	Mode of use	30
A.2	Guidance on the use of radiation test sites	31
A.2.1	Verification of the test site.....	31
A.2.2	Preparation of the EUT.....	31
A.2.3	Power supplies to the EUT	31
A.2.4	Volume control setting for analogue speech tests	31
A.2.5	Range length	32
A.2.6	Site preparation	32
A.3	Coupling of signals	33
A.3.1	General	33
A.3.2	Data Signals.....	33
A.3.3	Speech and analogue signals.....	33
A.3.3.1	Acoustic coupler description	33
A.3.3.2	Calibration.....	34
A.4	Standard test position	34
A.5	Test fixture.....	34
A.5.1	Description	34
A.5.2	Calibration	35

A.5.3	Mode of use	36
Annex B (informative):	Bibliography.....	37
History		38

Intellectual Property Rights

IPRs essential or potentially essential to the present document may have been declared to ETSI. The information pertaining to these essential IPRs, if any, is publicly available for **ETSI members and non-members**, and can be found in ETSI SR 000 314: *"Intellectual Property Rights (IPRs); Essential, or potentially Essential, IPRs notified to ETSI in respect of ETSI standards"*, which is available from the ETSI Secretariat. Latest updates are available on the ETSI Web server (<http://www.etsi.org/ipr>).

Pursuant to the ETSI IPR Policy, no investigation, including IPR searches, has been carried out by ETSI. No guarantee can be given as to the existence of other IPRs not referenced in ETSI SR 000 314 (or the updates on the ETSI Web server) which are, or may be, or may become, essential to the present document.

Foreword

This European Standard (Telecommunications series) has been produced by ETSI Technical Committee Electromagnetic compatibility and Radio spectrum Matters (ERM).

The present document is part 1 of a multi-part deliverable covering the Digital radio microphones operating in the CEPT Harmonized band 1 785 MHz to 1 800 MHz, as identified below:

Part 1: "Technical characteristics and methods of measurement";

Part 2: "Harmonized EN under article 3.2 of the R&TTE directive".

Every EN prepared by ETSI is a voluntary standard. The present document may contain text concerning conformance testing of the equipment to which it relates. This text should be considered as guidance only and does not make the present document mandatory.

Annex A provides normative specifications concerning radiated measurements.

National transposition dates	
Date of adoption of this EN:	15 June 2001
Date of latest announcement of this EN (doa):	30 September 2001
Date of latest publication of new National Standard or endorsement of this EN (dop/e):	31 March 2002
Date of withdrawal of any conflicting National Standard (dow):	31 March 2002

Introduction

The present document is the first stage of the introduction of digital radio microphones into the radio spectrum. The parameters are suitable for use on a wider range of spectrums when such spectrum is available and compatibility issues are considered.

The present document is based on EN 300 422 [1].

Since the adoption of EN 300 422 [1] for radio microphones, digital equipment has been introduced with different requirements for bandwidth and testing.

The present document is intended to specify the minimum performance and the methods for measurement of Digital Radio Microphones and In-ear monitoring systems as specified in the scope. In-ear monitoring systems may be tested to either the present document or to EN 301 357 [6] with due consideration of power and operating frequency.

The rapidly increasing quantities of wireless microphones (hereafter referred to as radio microphones) in operation, both legal and illegal, together with the greater mobility of the users, either professional or private, has led to a serious situation with many occurrences of interference and irregular operation. Legal radio microphones, being fundamentally low power devices, are interfered with more than the generators of the interference, and suffer primarily from this situation. The use of the CEPT harmonized band 1 785 to 1 800 MHz for digital devices detailed within the scope enables manufacturers to better meet the requirements of the market.

In preparing the present document, much attention has been given to assure a low interference probability, while at the same time allowing a maximum flexibility and service to the end-user.

The present document is a testing standard based on spectrum utilization parameters and does not include performance characteristics that may be required by the user or requirements for interfacing equipment.

Cordless headphones/loudspeakers and consumer In-ear monitoring are low power wideband systems that have some characteristics in common with radio microphones but are not compatible with multichannel radio microphones covered by the present document. This equipment is covered by EN 301 357 [6].

1 Scope

The present document covers the minimum characteristics considered necessary in order to make the best use of the available frequencies. It does not necessarily include all the characteristics that may be required by a user, nor does it necessarily represent the optimum performance achievable.

The present document applies to digital equipment operating on radio frequencies between 1 785 MHz and 1 800 MHz. The present document does not preclude any digital FDMA modulation technique, provided that the modulation spectrum lies within the standardized spectral mask.

Analogue Frequency Modulation (FM) is at present used for the majority of radio microphones and other similar equipment and is not within the scope of this standard. The present document does not apply to radio microphones or in ear monitoring equipment employing Time Division Multiple Access (TDMA), frequency hopping and spread spectrum or similar forms of modulation.

Electromagnetic compatibility (EMC) requirements are covered by EN 301 489-9 [5].

Additional standards or specifications may be required for equipment intended to interface to the Public Switched Telephone Network (PSTN). This facility may be submitted to regulatory conditions.

The present document may be used by accredited test laboratories for testing of the equipment. The performance of the equipment submitted for testing should be representative of the performance of the corresponding production models.

The present document contains instructions for the presentation of equipment for testing purposes.

Power limits recommended in the present document have been chosen to allow maximum simultaneous reusage of frequency allocations. National regulations on power output may apply up to the limits quoted below.

NOTE: For higher power equipment reference should be made to ETS 300 454 [4] Wide band audio links.

Equipment	effective radiated power (erp) or conducted
Radio Microphones	50 mW
In ear monitoring	50 mW

The types of equipment covered by the present document are as follows:

- professional hand held radio microphones;
- professional body worn radio microphones;
- in ear monitoring systems.

2 References

The following documents contain provisions which, through reference in this text, constitute provisions of the present document.

- References are either specific (identified by date of publication and/or edition number or version number) or non-specific.
- For a specific reference, subsequent revisions do not apply.
- For a non-specific reference, the latest version applies.

- [1] ETSI EN 300 422: "Electromagnetic compatibility and Radio spectrum Matters (ERM); Technical characteristics and test methods for wireless microphones in the 25 MHz to 3 GHz frequency range".
- [2] ITU-R Recommendation BS.559-2: "Objective measurement of radio-frequency protection ratios in LF, MF and HF broadcasting".
- [3] ETSI ETR 028: "Radio Equipment and Systems (RES); Uncertainties in the measurement of mobile radio equipment characteristics".
- [4] ETSI ETS 300 454 (including Amendment 1): "Radio Equipment and Systems (RES); Wide band audio links; Technical characteristics and test methods".
- [5] ETSI EN 301 489-9: "ElectroMagnetic compatibility and Radio spectrum Matters (ERM); ElectroMagnetic Compatibility (EMC) standard for radio equipment and services; Part 9: Specific conditions for wireless microphones and similar Radio Frequency (RF) audio link equipment".
- [6] ETSI EN 301 357: "Electromagnetic compatibility and Radio spectrum Matters (ERM); Technical characteristics and test methods for analogue cordless wideband audio devices using integral antennas operating in the CEPT recommended 863 MHz to 865 MHz frequency range".
- [7] ANSI C63.5: "American National Standard for Calibration of Antennas Used for Radiated Emission Measurements in Electromagnetic Interference (EMI) Control Calibration of Antennas (9 kHz to 40 GHz)".
- [8] ETSI ETR 273: "Electromagnetic compatibility and Radio spectrum Matters (ERM); Improvement of radiated methods of measurement (using test sites) and evaluation of the corresponding measurement uncertainties".
- [9] IEC 60489-3: "Methods of measurement for radio equipment used in the mobile services. Part 3: Receivers for A3E or F3E emissions".

3 Definitions, symbols and abbreviations

3.1 Definitions

For the purposes of the present document, the following terms and definitions apply:

conducted measurements: measurements that are made using a direct 50 Ω connection to the EUT

integral antenna: antenna, with or without a connector, designed as, and declared as by the manufacturer, an indispensable part of the equipment

integral microphone: microphone, designed as, and declared as by the manufacturer, an indispensable fixed part of the equipment

limiter threshold: audio input or output level at which the transmitter audio limiter action may be said to commence
It is specified with any accessible variable gain controls set according to the manufacturer's instructions, with a sinusoidal input signal of 500 Hz)

radiated measurements: measurements that involve the absolute measurement of a radiated electromagnetic field

carrier grid: evenly spaced raster in a given frequency band for the allocation of carrier frequencies

The minimum distance of two carriers in use is a multiple of the raster dependent on type and usage of the equipment

channel bandwidth: frequency band of defined width (as a multiple of the carrier grid) including safety margin for operation on adjacent channels, located symmetrically around carrier frequency in the carrier grid

port: any connection point on or within the Equipment Under Test (EUT) intended for the connection of cables to or from that equipment

Radio Frequency (RF) port: any connection point on or within the EUT intended for the connection of RF cables
RF ports are treated as 50 Ω connection points unless otherwise specified by the manufacturer.

3.2 Symbols

For the purposes of the present document, the following symbols apply:

λ	wavelength in metres
μF	microFarad
μW	microWatt
dBc	dB relative to the carrier level
E	field strength
E _o	reference field strength (see annex A)
f _c	carrier frequency
f _o	operating frequency
GHz	gigaHertz
H	Henry
kHz	kiloHertz
lim	limiting
MHz	megaHertz
mW	milliWatt
nW	nanoWatt
R	distance (see annex A)
R _o	reference distance (see annex A)

3.3 Abbreviations

For the purposes of the present document, the following abbreviations apply:

ac	alternating current
AR1	Alignment Range 1
AR2	Alignment Range 2
B	declared channel Bandwidth (see table 1)
BN	Necessary Bandwidth
dc	direct current
erp	effective radiated power
EUT	Equipment Under Test
FDMA	Frequency Division Multiple Access
GMSK	Gaussian Filtered Minimum Shift Keying
GTFM	Generalized Tamed Frequency Modulation
LF	Low Frequency
PSTN	Public Switched Telephone Network
RBW	Resolution BandWidth
RF	Radio Frequency
TDMA	Time Division Multiple Access
Tx	Transmitter
VBW	Video BandWidth

4 Functional characteristics

4.1 Radio microphone descriptions

Radio microphones traditionally have used wide band analogue frequency modulation to achieve the necessary audio performance for professional use. For analogue applications the modulated transmitter signal requires a 200 kHz maximum channel bandwidth. For digital applications the required bandwidth is affected by the transmitted data rate, the pulse shaping filter and the applied modulation scheme. The required data rate will be determined primarily by the desired audio quality. Various combinations of the source coding, channel coding, spectrum shaping and modulation technique are applicable and may lead to more or less spectral bandwidth. In order to keep freedom in application and design different channel bandwidths are defined and can be declared by the manufacturer.

The radio part of the transmitter and receiver shall be made up exclusively from equipment that has been approved according to the present document.

Other equipment that may be connected to radio microphones shall fulfil the standards applicable to that equipment (if any).

4.2 In ear monitoring

In ear monitoring equipment is used by stage and studio performers to receive personal fold back (monitoring) of the performance. This can be just their own voice or a complex mix of sources. This equipment is usually stereo or 2 channel audio, however, the bandwidth requirement of professional in ear monitoring equipment is similar to those of radio microphones.

The radio part of the transmitter and receiver shall be made up exclusively from equipment that has been approved according to the present document.

Other equipment that may be connected to in ear monitoring equipment shall fulfil the standards applicable to that equipment (if any).

5 General

5.1 Presentation of equipment for testing purposes

Each equipment submitted for testing shall fulfil the requirements of the present document on all channels over which it is intended to operate.

The applicant shall complete the appropriate application form when submitting equipment for testing.

For radio microphones that may use a variety of audio capsules the manufacturer shall supply the test sample with an audio test fixture, to substitute the audio capsule, with suitable input and output impedance.

The applicant shall state the channel bandwidth(s) within which the equipment is designed to operate chosen from table 1.

Table 1: Channel bandwidth

Declared channel Bandwidth (B)	Designation
200 kHz	D2
300 kHz	D3
400 kHz	D4
500 kHz	D5
600 kHz	D6

The applicant shall supply all relevant interface information and any tools and test fixtures to allow:

- direct current (dc) power connection;
- RF connection;
- analogue audio connection;
- the limiting of the transmitter; and
- the setting of any input audio level controls for normal operation, for a sinusoidal input signal of 500 Hz. The manufacturer shall specify the settings of any other controls necessary to avoid invalidating the test measurements.

Besides the technical documentation, the applicant should also supply an operating manual for the device(s).

To simplify and harmonize the testing procedures between the manufacturers and test laboratories, measurement shall be performed, according to the present document, on samples of equipment defined in clauses 5.1.1 to 5.1.1.2.2.

These clauses are intended to give confidence that the requirements set out in the present document have been met without the necessity of performing measurements on all channels.

5.1.1 Choice of model for testing

The applicant shall provide one or more production model(s) of the equipment, including all antenna(s) designed for the equipment, and that are required to be covered by the testing.

If type approval is given on the basis of tests on a preliminary model, the corresponding production models shall be identical in all respects with the preliminary model tested.

In the case of radio microphone equipment without a permanent external RF port, see clause 5.1.1.2.

5.1.1.1 Testing of multi-channel equipment

One sample shall be submitted to enable tests to be carried out on three channels.

The centre frequency of the switching range of the sample shall correspond to the centre frequency of the alignment range.

Full tests shall be carried out on a frequency within 100 kHz of the centre frequency of the switching range and within 100 kHz of the lowest and also within 100 kHz of the highest frequency of the switching range.

5.1.1.2 Testing of equipment without a permanent external RF port

To facilitate relative measurements, use may be made of a test fixture as described in clause 7.3, or the equipment may be supplied with a permanent internal or temporary internal/external RF port.

5.1.1.2.1 Equipment with a permanent internal RF port

The way to access a permanent internal RF port shall be stated by the applicant with the aid of a diagram. The fact that use has been made of a permanent internal RF port shall be recorded in the test report.

5.1.1.2.2 Equipment with a temporary RF port

The applicant shall submit two sets of equipment to the test laboratory, one fitted with a temporary 50 Ω RF connector with the antenna disconnected and the other with the antenna connected. Each equipment shall be used for the appropriate tests.

The way the temporary RF port is implemented shall be stated by the applicant with the aid of a diagram. The fact that use has been made of the temporary RF port to facilitate measurements shall be stated in the test report. The addition of a temporary RF port should not influence the performance of the EUT.

5.2 Mechanical and electrical design

5.2.1 General

The equipment submitted by the applicant shall be designed, constructed and manufactured in accordance with sound engineering practice, and with the aim of minimizing harmful interference to other equipment and services.

5.2.2 Controls

Those controls that, if maladjusted, might increase the interfering potentialities of the equipment shall only be accessible by partial or complete disassembly of the device and requiring the use of tools.

5.2.3 Performance testing with Integral antenna

Type approval of equipment with integral antenna only applies to that equipment together with the antenna originally supplied by the manufacturer for testing.

5.2.4 Marking (equipment identification)

The equipment shall be marked in a visible place. This marking shall be legible, tamper-proof and durable.

The marking shall include:

- the name of the manufacturer or his trade mark;
- the type designation of the manufacturer;
- serial number;
- operational frequency range;
- national and/or international type approval (if required);
- modulation type.

Alternatively the marking shall consist of:

- a normally readable label; and
- the information detailed above, stored electronically in a secure format, which is easily readable by either:
 - the receiver provided by the manufacturer; or
 - a reading system provided by the manufacturer with each transmitter.

5.3 Interpretation of the measurement results

The interpretation of the results recorded in the appropriate test report for the measurements described in the present document shall be as follows:

- the measured value related to the corresponding limit shall be used to decide whether an equipment meets the requirements of the present document;
- the measurement uncertainty value for the measurement of each parameter shall be separately included in the test report;
- the recorded value of the measurement uncertainty shall be, for each measurement, equal to or lower than the figures in the table of measurement uncertainty as in clause 10.

6 Test conditions, power sources and ambient conditions

6.1 Normal and extreme test-conditions

Performance tests shall be made under normal test conditions, and also, where stated, under extreme test conditions.

The test conditions and procedures shall be as specified in clauses 6.2 to 6.4.2.4.

6.2 Test power source

During performance tests the power source of the equipment shall be replaced by a test power source, capable of producing normal and extreme test voltages as specified in clauses 6.3.2 and 6.4.2. The internal impedance of the test power source shall be low enough for its effect on the test results to be negligible. For the purpose of the tests, the voltage of the power source shall be measured at the input terminals of the equipment.

For battery operated equipment, the battery shall be removed and the test power source shall be suitably decoupled and applied as close to the equipment battery terminals as practicable. For radiated measurements any external power leads should be arranged so as not to affect the measurements. If necessary the external power supply may be replaced with the equipment's own internal batteries at the required voltage, this shall be stated on the test report.

If the equipment is provided with a power cable or power socket, the test voltage shall be that measured at the point of connection of the power cable to the equipment.

During tests the power source voltages shall be within a tolerance of $< \pm 1$ % relative to the voltage at the beginning of each test. The value of this tolerance can be critical for certain measurements. Using a smaller tolerance provides a better uncertainty value for these measurements. If internal batteries are used, at the end of each test the voltage shall be within a tolerance of $< \pm 1$ % relative to the voltage at the beginning of each test.

6.3 Normal test conditions

6.3.1 Normal temperature and humidity

The normal temperature and humidity conditions for tests shall be any convenient combination of temperature and humidity within the following ranges:

- temperature: $+15^{\circ}\text{C}$ to $+35^{\circ}\text{C}$;
- relative humidity: 20 % to 75 %.

When it is impracticable to carry out the tests under the conditions stated above, a note to this effect, stating the actual temperature and relative humidity during the tests, shall be added to the test report.

6.3.2 Normal test power source voltage

6.3.2.1 Mains voltage

The normal test voltage for equipment to be connected to the mains shall be the nominal mains voltage. For the purpose of the present document, the nominal voltage shall be the declared mains voltage, or any of the declared mains voltages, for which the equipment was designed.

The frequency of the test power source corresponding to the alternating current (ac) mains shall be between 49 Hz and 51 Hz.

6.3.2.2 Nickel-cadmium cells

When the radio equipment is intended for operation from the usual types of nickel-cadmium cell the nominal test voltage shall be 1,2 V per cell.

6.3.2.3 Other power sources

For operation from other power sources or types of battery (primary or secondary), the normal test voltage shall be that declared by the equipment manufacturer and agreed by the test laboratory. The values shall be stated in the test report.

6.4 Extreme test conditions

6.4.1 Extreme temperatures

For tests at extreme temperatures, measurements shall be made in accordance with the procedures specified in clause 6.4.1.1, at -10 °C and +45 °C.

6.4.1.1 Procedures for tests at extreme temperatures

Before measurements are made the equipment shall have reached thermal balance in the test chamber. The equipment shall be switched off during the temperature stabilizing period. If the thermal balance is not checked by measurements, a temperature stabilizing period of at least one hour shall be allowed.

The sequence of measurements shall be chosen and the humidity content in the test chamber shall be controlled so that excessive condensation does not occur.

Before tests at the higher temperatures, the equipment shall be placed in the test chamber and left until thermal balance is attained. The equipment shall then be switched on for one minute in the transmit condition, after which the equipment shall meet the specified requirements.

For tests at the lower extreme temperature the equipment shall be left in the test chamber until thermal balance is attained, then switched to the standby or receive condition for one minute after which the equipment shall meet the specified requirements.

6.4.2 Extreme test power source voltages

6.4.2.1 Mains voltage

The extreme test voltages for equipment to be connected to an ac mains source shall be the nominal mains voltage $\pm 10\%$.

The frequency of the test power source corresponding to the ac mains shall be between 49 Hz and 51 Hz.

6.4.2.2 Re-chargeable battery power sources

When the radio equipment is intended for operation from nickel-cadmium cells, the extreme test voltage shall be 1,3 and 0,9 times the nominal voltage of the battery. For other types of battery the lower extreme test voltage for discharged condition shall be declared by the equipment manufacturer.

6.4.2.3 Power sources using other types of batteries

The lower extreme test voltages for equipment with power sources using primary batteries shall be as follows:

- for Leclanché or lithium type of battery:
 - 0,85 times the nominal voltage of the battery;
- for mercury type of battery:
 - 0,9 times the nominal voltage of the battery;
- for other types of primary batteries:
 - end-point voltage declared by the equipment manufacturer.

The nominal voltage is considered to be the upper extreme test voltage in this case.

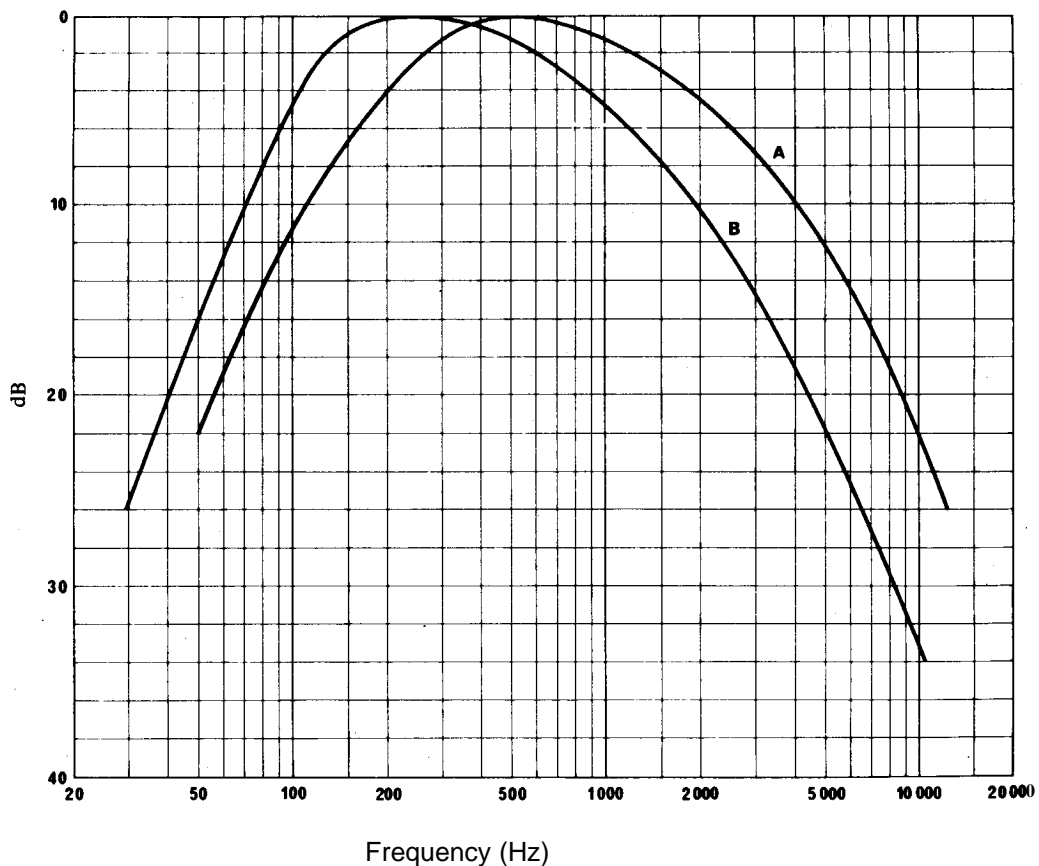
6.4.2.4 Other power sources

For equipment using other power sources, or capable of being operated from a variety of power sources, the extreme test voltages shall be those agreed between the equipment manufacturer and the testing laboratory and shall be recorded with the results.

7 General conditions

7.1 Normal test modulation

For the purpose of determining the transmitter necessary bandwidth, coloured noise according to ITU-R Recommendation BS.559-2 [2] shall be used, according to the method laid down in clause 8.3.2. The resulting spectral distribution is shown in figure 1. This noise may be generated by a white noise source followed by a passive filter shown in figure 2. In cases where the spectrum shaping does not remain constant with respect to the audio input level, the manufacturer must declare the audio input level at which the spectrum shape is maximized.



NOTE 1: Curve A = Frequency spectrum of standardized noise (measured with one-third octave filters).

NOTE 2: Curve B = Frequency response characteristics of filter circuit.

Figure 1: Spectral distribution for determining transmitter necessary bandwidth

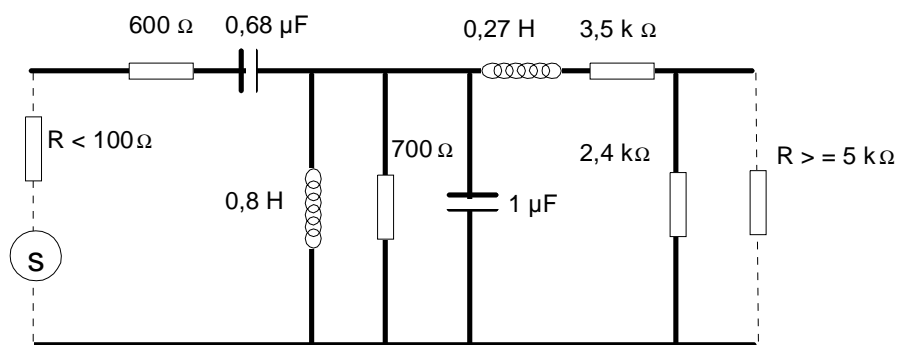


Figure 2: Filter circuit

7.2 Artificial antenna

Where applicable, tests shall be carried out using an artificial antenna that shall be a substantially non-reactive non-radiating load of 50 Ω . The return loss measured at the 50 Ω connector shall be ≥ 20 dB at the operating frequency of the EUT and ≥ 14 dB at any measured unwanted frequency outside this band.

7.3 Test fixture

The applicant may be required to supply a test fixture suitable to allow relative measurements to be made on the submitted sample.

In all cases, the test fixture shall provide:

- a connection to an external power supply;
- an audio interface either by direct connection or by an acoustic coupler.

In addition, the test fixture for integral antenna equipment shall contain a radio frequency coupling device associated with an integral antenna equipment for coupling the integral antenna to an RF port at the working frequencies of the (EUT). This allows certain measurements to be performed using the conducted measurement methods. Only relative measurements may be performed and only those at or near frequencies for which the test fixture has been calibrated.

The performance characteristics of the test fixture shall be agreed upon with the accredited test laboratory and shall conform to the following basic parameters:

- the circuitry associated with the RF coupling shall contain no active or non-linear devices;
- the coupling loss shall not influence the measuring results;
- the coupling loss shall be independent of the position of the test fixture and be unaffected by the proximity of surrounding objects or people;
- the coupling loss shall be reproducible when the EUT is removed and replaced;
- the coupling loss shall remain substantially constant when the environmental conditions are varied.

7.4 Test site and general arrangements for radiated measurements

For guidance on radiation test sites, see annex A. Detailed descriptions of the radiated measurement arrangements are included in this annex.

7.5 Arrangement for test signals at the input of the transmitter

For the purpose of the present document, the transmitter audio input signal shall be supplied by a generator at the correct impedance applied at the connections of the stated audio input, unless otherwise stated.

8 Methods of measurement and limits for transmitter parameters

All tests shall be carried out under normal conditions unless otherwise stated. The channel bandwidth declared by the applicant in clause 5.1 shall be used to determine the limits described in clauses 8.1.3 and 8.3.

8.1 Frequency error

8.1.1 Definition

The frequency error of the transmitter is the difference between the unmodulated carrier frequency measured under normal conditions and its value measured under extreme conditions.

In the case of transmitters that are incapable of producing an unmodulated carrier, the mean of two frequency measurements taken at the same level on the upper and lower sides of the modulation envelope shall be taken as the measurement.

8.1.2 Method of measurement

The carrier frequency shall be measured with the transmitter connected to an artificial antenna (see clause 7.2). A transmitter without an RF port may be placed in a test fixture (see clause 7.3) connected to an artificial antenna. The measurement shall be made under normal test conditions (see clause 6.3), and extreme test conditions (clauses 6.4.1 and 6.4.2 applied simultaneously).

Equipment that also includes an RF port for use with other external antennas shall be tested using this port.

8.1.3 Limit

The frequency error shall not exceed ± 50 kHz for normal and extreme test conditions.

8.2 Carrier power

8.2.1 Definition

The transmitter carrier power is defined as the peak envelope power delivered to the artificial antenna. The peak envelope power is the maximum value of the mean power. In the case of equipment with integral antenna, the transmitter carrier power is the peak envelope power in the direction of maximum field strength, under specified conditions of measurement, (see clause 7.5), if possible in the absence of modulation. The stated output power is the carrier power declared by the manufacturer. For equipment with a permanent external RF port, tests in clause 8.2.2 shall apply.

For transmitters that are incapable of producing an unmodulated carrier, the transmitter RF peak envelope power shall be measured, using a spectrum analyser with the following settings:

- centre frequency: f_c : Transmitter (Tx) nominal frequency;
- dispersion (Span): $f_c - 1$ MHz to $f_c + 1$ MHz;
- Resolution Bandwidth (RBW): 1 MHz (2 MHz when declared bandwidth is ≥ 500 kHz);
- Video Bandwidth (VBW): 1 MHz (2 MHz when declared bandwidth is ≥ 500 kHz);
- analyser detector type: Peak
- display mode: Peakhold
- accuracy: ≤ 1 dB.

8.2.2 Method of measurement for equipment without integral antenna

This clause applies to equipment with a permanent RF port.

The transmitter shall be connected to an artificial antenna (see clause 7.2) and the power delivered to this artificial antenna shall be measured.

The measurements shall be made under normal test conditions (clause 6.3) and extreme test conditions (clause 6.4) (clauses 6.4.1 and 6.4.2 applied simultaneously).

8.2.3 Method of measurement for equipment with integral antenna

8.2.3.1 Method of measurement under normal test conditions

On a test site fulfilling the requirements of clause 7.4, the sample shall be placed on the support in the following position:

- for equipment with an internal antenna, it shall stand vertically, with that axis vertical which is closest to vertical in normal use;
- for equipment with rigid external antenna, the antenna shall be vertical;
- for equipment with non-rigid external antenna, with the antenna extended vertically upwards by a non-conducting support.

The transmitter shall be switched on, and the test receiver tuned to the frequency of the signal being measured. The test antenna shall be oriented for vertical polarization and shall be raised or lowered through the specified height range until a maximum signal level is detected on the test receiver. This test shall be repeated in horizontal polarization.

The transmitter shall be rotated horizontally through 360° until the highest maximum signal is received.

NOTE: This maximum may be a lower value than the value obtainable at heights outside the specified limits.

The transmitter shall be replaced by a substitution antenna, as defined in clause A.1.3 and the test antenna raised or lowered as necessary to ensure that the maximum signal is still received. The input signal to the substitution antenna shall be adjusted in level until an equal or a known related level to that detected from the transmitter is obtained in the test receiver.

The carrier power is equal to the power supplied to the substitution antenna, increased by the known relationship if necessary.

The measurement shall be repeated for any alternative antenna supplied by the applicant.

A check should be made in the horizontal plane of polarization to ensure that the value obtained above is the maximum. If larger values are obtained, this fact should be recorded in the test report.

8.2.3.2 Method of measurement under extreme test conditions

The equipment shall be placed in a test fixture (see clause 7.3) and the relative power deviation delivered to the artificial antenna shall be measured. The measurement shall be made under normal test conditions (clause 6.3) and extreme test conditions (clauses 6.4.1 and 6.4.2 applied simultaneously).

8.2.4 Limit

The carrier power under normal test conditions (clause 6.3) and extreme test conditions (clause 6.4) (clauses 6.4.1 and 6.4.2 applied simultaneously) shall not exceed the limits in table 2.

Table 2: Carrier power

Equipment	erp or conducted (note)
Radio microphone	50 mW
In ear monitoring	50 mW
NOTE: Measurement should normally be erp unless declared by the applicant as conducted.	

The power of the test sample under normal test conditions shall be within ± 3 dB of the power level declared by the applicant, without exceeding the values in table 2. The declared and measured levels shall be recorded in the test report.

8.3 Channel bandwidth

8.3.1 Definition

For the purpose of the present document the channel Bandwidth (B) is defined as the minimum declared bandwidth, within which the transmitter's necessary bandwidth can be contained. A table of preferred channel bandwidths is given in clause 5.1. The necessary bandwidth of the transmitter shall be measured under the conditions laid down in clause 8.3.2.

8.3.2 Measurement of Necessary Bandwidth (BN)

With the defined audio input (clause 7.1) the peak envelope power has to be measured first. This value is then used as a 0dB reference. A spectrum analyser with the following settings should be used:

- centre frequency: fc: Transmitter (Tx) nominal frequency;
- dispersion (Span): fc - 1 MHz to fc + 1 MHz;
- Resolution BandWidth (RBW): 1 MHz (2 MHz when declared bandwidth is ≥ 500 kHz);
- Video BandWidth (VBW): 1 MHz (2 MHz when declared bandwidth is ≥ 500 kHz);
- analyser detector type: Peak;
- analyser display mode: Peak hold;
- accuracy: ≤ 1 dB.

The maximum value is now defined as the 0dB reference for the measurement of the spectrum shape.

A spectrum analyser with the following settings should be used:

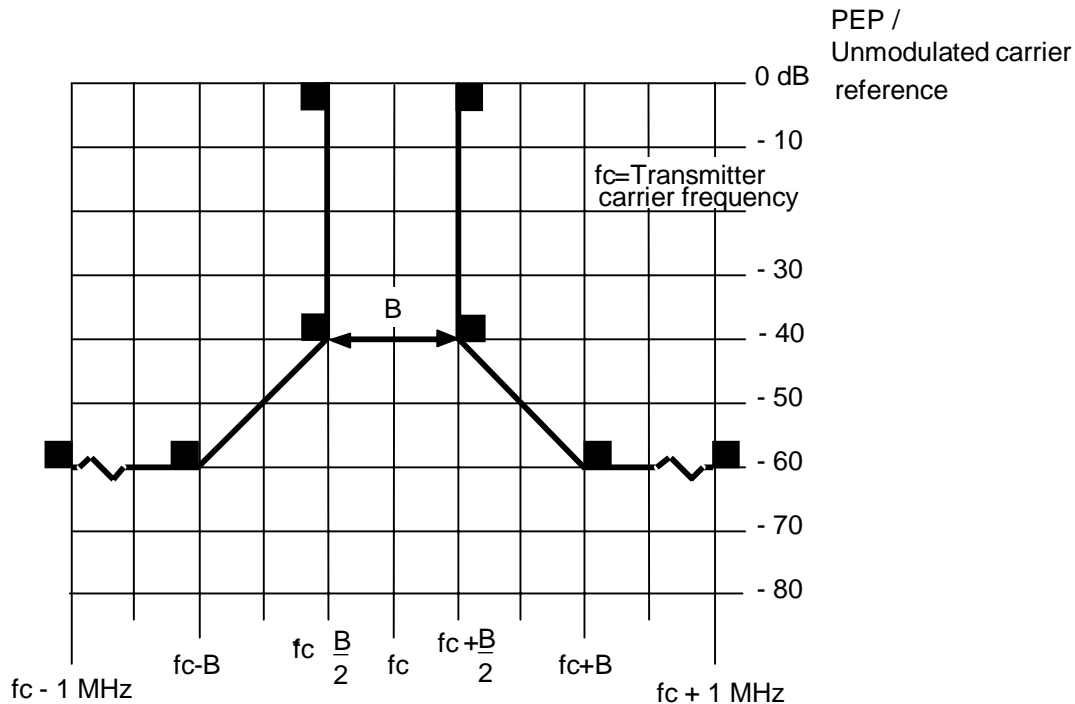
- centre frequency: fc: Transmitter (Tx) nominal frequency;
- dispersion (Span): fc - 1 MHz to fc + 1 MHz;
- Resolution BandWidth (RBW): 1 kHz;
- Video BandWidth (VBW): 1 kHz;
- analyser detector mode: Peak;
- analyser display mode: Peak hold.

NOTE 1: If the transmitter incorporates any ancillary coding or signalling channels (e.g. pilot-tones), these should be enabled prior to any spectral measurements.

NOTE 2: If the transmitter incorporates more than one audio input, e.g. stereo systems, the second and subsequent channels should be simultaneously driven from the same noise source.

8.3.3 Limits

The transmitter output spectrum shall be within the mask defined in figure 3 where B is the declared channel bandwidth (see note).



NOTE: If the spectrum is outside the mask then the transmitter may be declared compliant within the next larger channel bandwidth defined in clause 5.1, subject to the agreement of the manufacturer. If the spectrum is outside the 600 kHz mask, the equipment does not meet the requirement specified in the present document.

Figure 3: Spectral mask - Normalized to channel bandwidth B (see table 1)

The measurement of Tx broad band noise floor shall be carried out in accordance with clause 8.3.2. The -60 dBc point shall be ± 1 MHz from f_c measured with an average detector.

8.4 Spurious emissions

8.4.1 Definition

Spurious emissions are emissions at frequencies other than those of the carrier and sidebands associated with test modulation, radiated by the equipment and its antenna. For these tests radiated measurements only shall be carried out.

8.4.2 Method of measuring the effective radiated power

On a test site fulfilling the requirements of annex A, the sample shall be placed at the specified height on a non-conducting support. The transmitter shall be operated at the carrier power as specified under clause 8.2, delivered to the antenna (see clause 5.1.1) without modulation.

Radiation of any spurious components shall be detected by the test antenna and receiver, over the frequency range specified below, excluding a 2 MHz band of frequencies centred on the channel on which the transmitter is intended to operate.

NOTE: The 2 MHz exclusion is covered by measurements carried out in clause 8.3.3.

The measuring receiver shall be tuned over the frequency range of 25 MHz to 12,75 GHz. At each frequency at which a component is detected, the sample shall be rotated to obtain maximum response and the effective radiated power of that component determined by a substitution measurement.

The measurement shall be repeated with the test antenna in the orthogonal polarization plane.

If the transmitter allows for stand-by operation the tests shall be repeated with the transmitter in standby mode.

8.4.3 Limits

The power of the spurious emissions shall not exceed the limits of table 3.

Table 3: Radiated measurements

State	Frequency		
	47 MHz to 74 MHz 87,5 MHz to 118 MHz 174 MHz to 230 MHz 470 MHz to 862 MHz	Other Frequencies below 1 000 MHz	Frequencies above 1 000 MHz
Operation	4 nW	250 nW	1 µW
Standby	2 nW	2 nW	50 nW

8.4.4 Measuring receiver

The term measuring receiver refers to either a selective voltmeter or a spectrum analyser measuring peak envelope power using a peak hold detector. The bandwidth of the measuring receiver is given in table 4.

Table 4: Measuring receiver bandwidth

Frequency being measured	Measuring receiver bandwidth
25 MHz to < 30 MHz	9 kHz to 10 kHz
30 MHz to < 1 000 MHz	100 kHz to 120 kHz
> 1 000 MHz	1 MHz

9 Receiver

9.1 Spurious emissions

9.1.1 Definitions

Spurious emissions from the receiver are radio frequency emissions at any frequency, generated by the equipment, antenna, aerial amplifier, down converters or filter.

Manufacturers shall provide a representative sample of the receiver system. The level of spurious emissions shall be measured by either:

- a) the power level from an external RF port; and
their effective radiated power when radiated by the cabinet and structure of the equipment (cabinet radiation); or
- b) their effective radiated power when radiated by the cabinet and the integral antenna, in the case of hand-portable equipment fitted with such an antenna and no external RF port.

9.1.2 Method of measuring the power level in a specified load

This method applies only to equipment with an external RF port.

The external RF port of the receiver under test shall be connected to a measuring receiver (see clause 8.4.4). The receiver under test shall be switched on, and the measuring receiver shall be tuned over the frequency range of 25 MHz to 12,75 GHz.

At each frequency at which a spurious component is detected, the power level shall be recorded as the spurious level delivered into the specified load.

9.1.3 Method of measuring the effective radiated power of the enclosure

This method applies only to equipment with an external RF port.

On a test site, selected from annex A, the equipment shall be placed at the specified height on a non-conducting support and in the position closest to normal use as declared by the manufacturer. The receiver antenna connector shall be connected to an artificial antenna (see clause 7.2).

The test antenna shall be oriented for vertical polarization and the length of the test antenna shall be chosen to correspond to the instantaneous frequency of the measuring receiver (see clause 8.4.4). The output of the test antenna shall be connected to a measuring receiver. The receiver shall be switched on and the measuring receiver shall be tuned over the frequency range as specified in clause 9.1.2. At each frequency at which a spurious component is detected, the test antenna shall be raised and lowered through the specified range of height until a maximum signal level is detected by the measuring receiver. When a test site according to clause A.3 is used there is no need to vary the height of the antenna. The receiver shall then be rotated through 360° in the horizontal plane until the maximum signal level is detected by the measuring receiver. The maximum signal level detected by the measuring receiver shall be noted.

The receiver shall be replaced by a substitution antenna as defined in clause A.1.3.

The substitution antenna shall be oriented for vertical polarization and the length of the substitution antenna shall be adjusted to correspond to the frequency of the spurious component detected.

The substitution antenna shall be connected to a calibrated signal generator.

The frequency of the calibrated signal generator shall be set to the frequency of the spurious component detected.

The input attenuator setting of the measuring receiver shall be adjusted in order to increase the sensitivity of the measuring receiver, if necessary.

The test antenna shall be raised and lowered through the specified range of height to ensure that the maximum signal is received. The input signal to the substitution antenna shall be adjusted to the level that produces a level detected by the measuring receiver, that is equal to the level noted while the spurious component was measured, corrected for the change of input attenuator setting of the measuring receiver. The input level to the substitution antenna shall be recorded as power level, corrected for the change of input attenuator setting of the measuring receiver.

The measurement shall be repeated with the test antenna and the substitution antenna oriented for horizontal polarization.

The measure of the effective radiated power of the spurious components is the larger of the two power levels recorded for each spurious component at the input to the substitution antenna, corrected for the gain of the antenna if necessary.

9.1.4 Method of measuring the effective radiated power

This method applies only to equipment with an integral antenna.

The method of measurement shall be performed according to clause 9.1.3, except that the receiver input shall be connected to the integral antenna and not to an artificial antenna.

9.1.5 Limits

The power of the spurious emissions shall not exceed the limits of table 5.

Table 5: Limits for receiver spurious emissions

	25 MHz to 1 000 MHz	Frequencies above 1 000 MHz
erp or conducted	2 nW	20 nW

10 Measurement uncertainty

The accumulated measurement uncertainties of the test system in use for the parameters to be measured shall not exceed those given in table 6. This is in order to ensure that the measurements remain within an acceptable standard. Uncertainty values for the RF parameters are valid to 2 GHz unless otherwise stated.

Table 6: Measurement uncertainty

Parameter	Uncertainty
RF frequency	$< \pm 1 \times 10^{-7}$
Audio Output power	$< \pm 0,5$ dB
Radiated RF power	$< \pm 6$ dB
Conducted RF power variations using a test fixture	$< \pm 0,75$ dB
Maximum frequency deviation:	
- within 300 Hz and 6 kHz of audio frequency	$< \pm 5$ %
- within 6 kHz and 25 kHz of audio frequency	$< \pm 3$ dB
Deviation limitation	$< \pm 5$ %
Radiated emission of transmitter, valid up to 12,75 GHz	$< \pm 6$ dB
Radiated emission of receiver, valid up to 12,75 GHz	$< \pm 6$ dB

For the test methods, according to the present document, the uncertainty figures are valid to a confidence level of 95,45 % calculated according to the methods described in ETR 028 [3].

Annex A (normative): Radiated measurement

This annex has been drafted so that it could be used as well for the assessment of speech, data or equipment providing a specific response.

It covers test sites and methods to be used with integral antenna equipment or equipment having an antenna connector.

A.1 Test sites and general arrangements for measurements involving the use of radiated fields

This annex introduces three most commonly available test sites, an anechoic chamber, an anechoic chamber with a ground plane and an Open Area Test Site (OATS), which may be used for radiated tests. These test sites are generally referred to as free field test sites. Both absolute and relative measurements can be performed in these sites. Where absolute measurements are to be carried out, the chamber should be verified. A detailed verification procedure is described in ETR 273 [8] relevant parts 2, 3 & 4.

NOTE: To ensure reproducibility and tractability of radiated measurements only these test sites should be used in measurements in accordance with the present document.

A.1.1 Anechoic chamber

An anechoic chamber is an enclosure, usually shielded, whose internal walls, floor and ceiling are covered with radio absorbing material, normally of the pyramidal urethane foam type. The chamber usually contains an antenna support at one end and a turntable at the other. A typical anechoic chamber is shown in figure A.1.

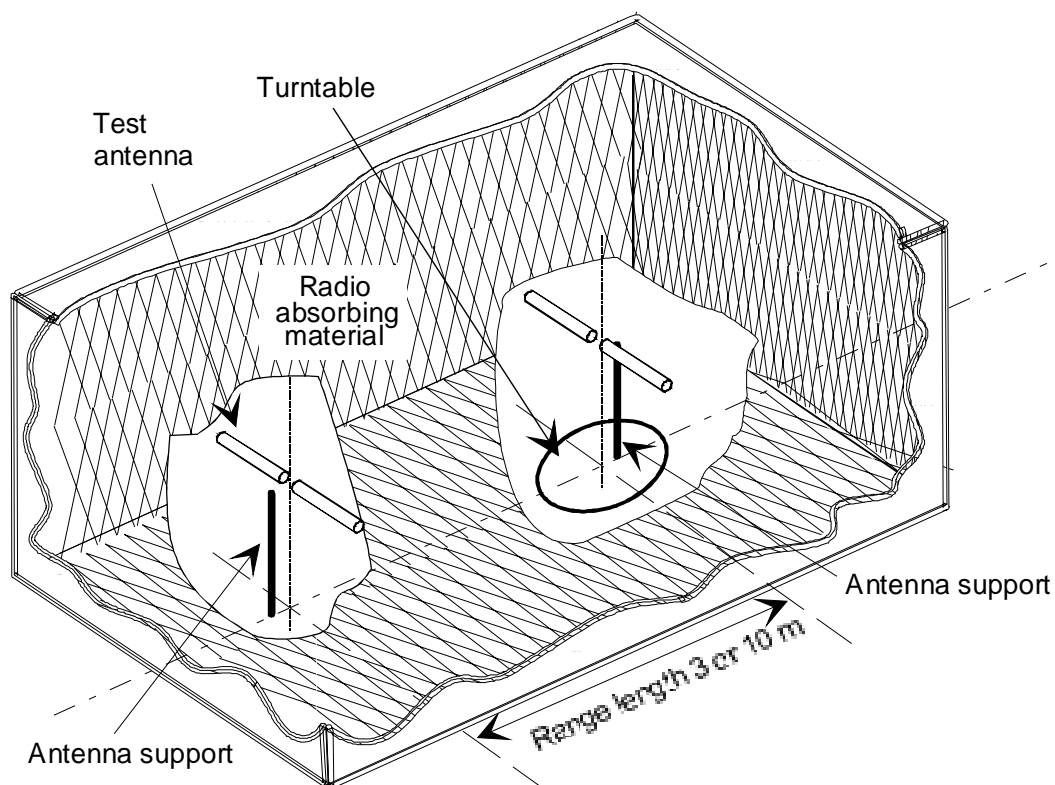


Figure A.1: A typical Anechoic Chamber

The chamber shielding and radio absorbing material work together to provide a controlled environment for testing purposes. This type of test chamber attempts to simulate free space conditions.

The shielding provides a test space, with reduced levels of interference from ambient signals and other outside effects, whilst the radio absorbing material minimizes unwanted reflections from the walls and ceiling which can influence the measurements. In practice it is relatively easy for shielding to provide high levels (80 dB to 140 dB) of ambient interference rejection, normally making ambient interference negligible.

A turntable is capable of rotation through 360° in the horizontal plane and it is used to support the test sample (EUT) at a suitable height (e.g. 1 m) above the ground plane. The chamber shall be large enough to allow the measuring distance of at least 3 m or $2(d_1+d_2)^2/\lambda$ (m), whichever is greater (see clause A.2.5). The distance used in actual measurements shall be recorded with the test results.

The anechoic chamber generally has several advantages over other test facilities. There is minimal ambient interference, minimal floor, ceiling and wall reflections and it is independent of the weather. It does however have some disadvantages which include limited measuring distance and limited lower frequency usage due to the size of the pyramidal absorbers. To improve low frequency performance, a combination structure of ferrite tiles and urethane foam absorbers is commonly used.

All types of emission, sensitivity and immunity testing can be carried out within an anechoic chamber without limitation.

A.1.2 Anechoic chamber with a conductive ground plane

An anechoic chamber with a conductive ground plane is an enclosure, usually shielded, whose internal walls and ceiling are covered with radio absorbing material, normally of the pyramidal urethane foam type. The floor, which is metallic, is not covered and forms the ground plane. The chamber usually contains an antenna mast at one end and a turntable at the other. A typical anechoic chamber with a conductive ground plane is shown in figure A.2.

This type of test chamber attempts to simulate an ideal Open Area Test Site whose primary characteristic is a perfectly conducting ground plane of infinite extent.

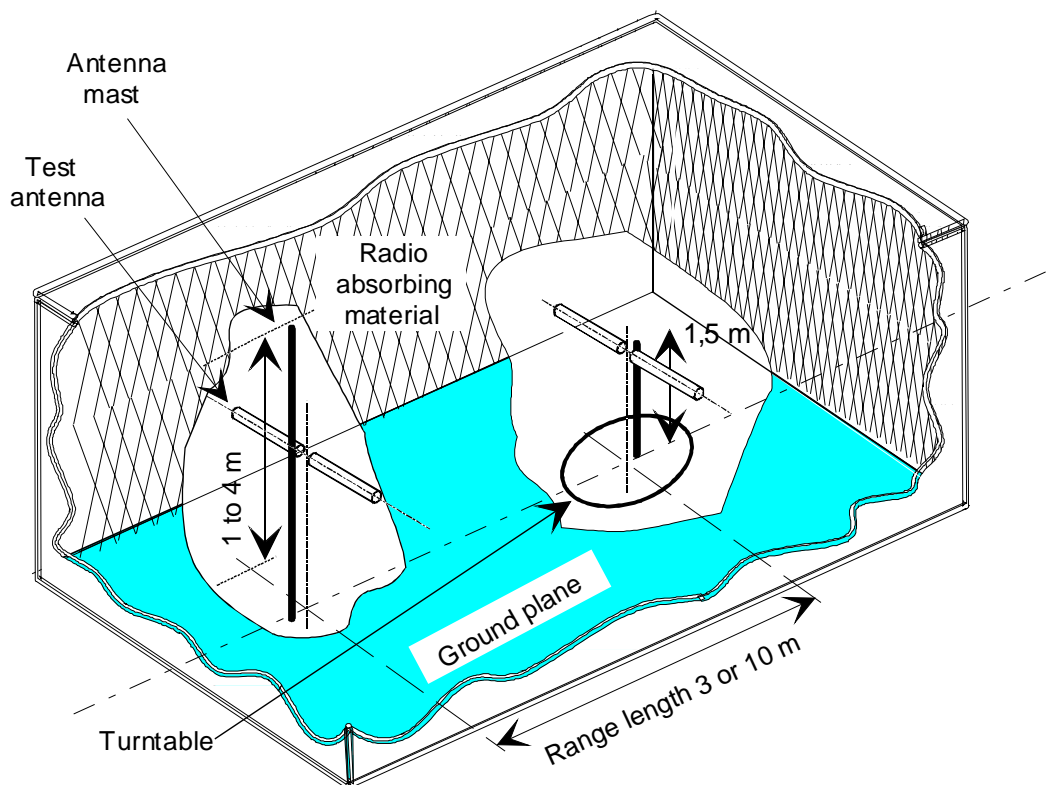


Figure A.2: A typical Anechoic Chamber with a conductive ground plane

In this facility the ground plane creates the wanted reflection path, such that the signal received by the receiving antenna is the sum of the signals from both the direct and reflected transmission paths. This creates a unique received signal level for each height of the transmitting antenna (or EUT) and the receiving antenna above the ground plane.

The antenna mast provides a variable height facility (from 1 m to 4 m) so that the position of the test antenna can be optimized for maximum coupled signal between antennas or between an EUT and the test antenna.

A turntable is capable of rotation through 360° in the horizontal plane and it is used to support the test sample (EUT) at a specified height, usually 1,5 m. above the ground plane. The chamber shall be large enough to allow the measuring distance of at least 3 m or $2(d_1+d_2)^2/\lambda$ (m), whichever is greater (see clause A.2.5). The distance used in actual measurements shall be recorded with the test results.

Emission testing involves firstly 'peaking' the field strength from the EUT by raising and lowering the receiving antenna on the mast (to obtain the maximum constructive interference of the direct and reflected signals from the EUT) and then rotating the turntable for a 'peak' in the azimuth plane. At this height of the test antenna on the mast, the amplitude of the received signal is noted. Secondly the EUT is replaced by a substitution antenna (positioned at the EUT's phase or volume centre) which is connected to a signal generator. The signal is again 'peaked' and the signal generator output adjusted until the level, noted in stage one, is again measured on the receiving device.

Receiver sensitivity tests over a ground plane also involve 'peaking' the field strength by raising and lowering the test antenna on the mast to obtain the maximum constructive interference of the direct and reflected signals, this time using a measuring antenna which has been positioned where the phase or volume centre of the EUT will be during testing. A transform factor is derived. The test antenna remains at the same height for stage two, during which the measuring antenna is replaced by the EUT. The amplitude of the transmitted signal is reduced to determine the field strength level at which a specified response is obtained from the EUT.

A.1.3 Open Area Test Site (OATS)

An Open Area Test Site comprises a turntable at one end and an antenna mast of variable height at the other end above a ground plane which, in the ideal case, is perfectly conducting and of infinite extent. In practice, whilst good conductivity can be achieved, the ground plane size has to be limited. A typical Open Area Test Site is shown in figure A.3.

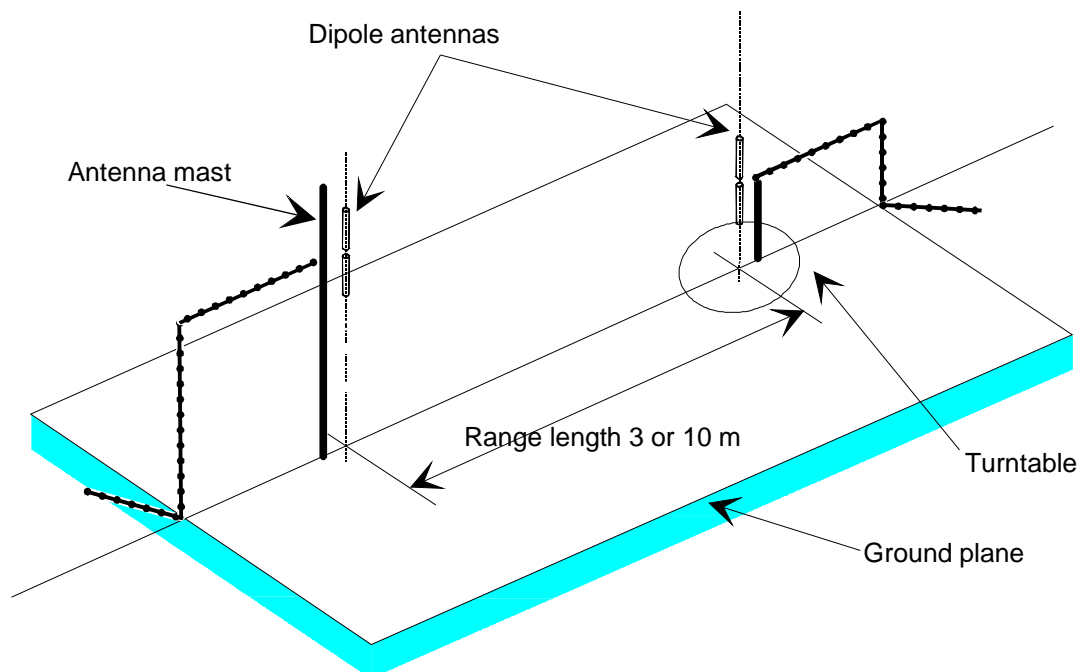


Figure A.3: A typical Open Area Test Site

The ground plane creates a wanted reflection path, such that the signal received by the receiving antenna is the sum of the signals received from the direct and reflected transmission paths. The phasing of these two signals creates a unique received level for each height of the transmitting antenna (or EUT) and the receiving antenna above the ground plane.

Site qualification concerning antenna positions, turntable, measurement distance and other arrangements are same as for anechoic chamber with a ground plane. In radiated measurements an OATS is also used by the same way as anechoic chamber with a ground plane.

Typical measuring arrangement common for ground plane test sites is presented in the figure A.4.

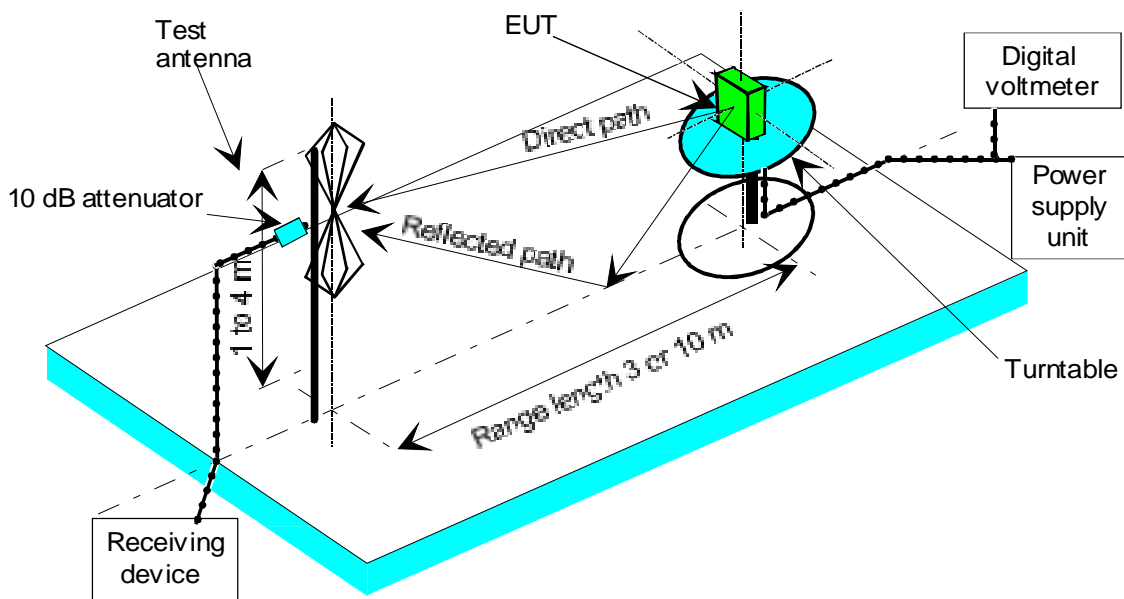


Figure A.4: Measuring arrangement on ground plane test site (OATS set-up for spurious emission testing)

A.1.4 Test antenna

A test antenna is always used in radiated test methods. In emission tests (i.e. frequency error, effective radiated power, spurious emissions and adjacent channel power) the test antenna is used to detect the field from the EUT in one stage of the measurement and from the substitution antenna in the other stage. When the test site is used for the measurement of receiver characteristics (i.e. sensitivity and various immunity parameters) the antenna is used as the transmitting device.

The test antenna should be mounted on a support capable of allowing the antenna to be used in either horizontal or vertical polarization which, on ground plane sites (i.e. anechoic chambers with ground planes and Open Area Test Sites), should additionally allow the height of its centre above the ground to be varied over the specified range (usually 1 to 4 m).

In the frequency band 30 MHz to 1 000 MHz, dipole antennas (constructed in accordance with ANSI C63.5 [7]) are generally recommended. For frequencies of 80 MHz and above, the dipoles should have their arm lengths set for resonance at the frequency of test. Below 80 MHz, shortened arm lengths are recommended. For spurious emission testing, however, a combination of bicones and log periodic dipole array antennas (commonly termed 'log periodics') could be used to cover the entire 30 MHz to 1 000 MHz band. Above 1 000 MHz, waveguide horns are recommended although, again, log periodics could be used.

NOTE: The gain of a horn antenna is generally expressed relative to an isotropic radiator.

A.1.5 Substitution antenna

The substitution antenna is used to replace the EUT for tests in which a transmitting parameter (i.e. frequency error, effective radiated power, spurious emissions and adjacent channel power) is being measured. For measurements in the frequency band 30 MHz to 1 000 MHz, the substitution antenna should be a dipole antenna (constructed in accordance with ANSI C63.5 [7]). For frequencies of 80 MHz and above, the dipoles should have their arm lengths set for resonance at the frequency of test. Below 80 MHz, shortened arm lengths are recommended. For measurements above 1 000 MHz, a waveguide horn is recommended. The centre of this antenna should coincide with either the phase centre or volume centre.

A.1.6 Measuring antenna

The measuring antenna is used in tests on an EUT in which a receiving parameter (i.e. sensitivity and various immunity tests) is being measured. Its purpose is to enable a measurement of the electric field strength in the vicinity of the EUT. For measurements in the frequency band 30 MHz to 1000 MHz, the measuring antenna should be a dipole antenna (constructed in accordance with ANSI C63.5 [7]). For frequencies of 80 MHz and above, the dipoles should have their arm lengths set for resonance at the frequency of test. Below 80 MHz, shortened arm lengths are recommended. The centre of this antenna should coincide with either the phase centre or volume centre (as specified in the test method) of the EUT.

A.1.7 Stripline arrangement

A.1.7.1 General

The stripline arrangement is a RF coupling device for coupling the integral antenna of an equipment to a 50 Ω radio frequency terminal. This allows the radiated measurements to be performed without an open air test site but in a restricted frequency range. Absolute or relative measurements can be performed; absolute measurements require a calibration of the stripline arrangement.

A.1.7.2 Description

The stripline is made of three highly conductive sheets forming part of a transmission line which allows the equipment under test to be placed within a known electric field. They shall be sufficiently rigid to support the equipment under test.

Two examples of stripline characteristics are given below:

		IEC 489-3 App. J	FTZ N°512 TB 9
Useful frequency range	MHz	1 to 200	0,1 to 4 000
Equipment size limits	length	200 mm	1 200 mm
(antenna included):	width	200 mm	1 200 mm
	height	250 mm	400 mm

A.1.7.3 Calibration

The aim of calibration is to establish at any frequency a relationship between the voltage applied by the signal generator and the field strength at the designated test area inside the stripline.

A.1.7.4 Mode of use

The stripline arrangement may be used for all radiated measurements within its calibrated frequency range.

The method of measurement is the same as the method using an open air test site with the following change. The stripline arrangement input socket is used instead of the test antenna.

A.2 Guidance on the use of radiation test sites

This clause details procedures, test equipment arrangements and verification that should be carried out before any of the radiated test are undertaken. These schemes are common to all types of test sites described in annex A.

A.2.1 Verification of the test site

No test should be carried out on a test site which does not possess a valid certificate of verification. The verification procedures for the different types of test sites described in annex A (i.e. anechoic chamber, anechoic chamber with a ground plane and Open Area Test Site) are given in ETR 273 [8] parts 2, 3 and 4, respectively.

A.2.2 Preparation of the EUT

The manufacturer should supply information about the EUT covering the operating frequency, polarization, supply voltage(s) and the reference face. Additional information, specific to the type of EUT should include, where relevant, carrier power, channel separation, whether different operating modes are available (e.g. high and low power modes) and if operation is continuous or is subject to a maximum test duty cycle (e.g. 1 minute on, 4 minutes off).

Where necessary, a mounting bracket of minimal size should be available for mounting the EUT on the turntable. This bracket should be made from low conductivity, low relative dielectric constant (i.e. less than 1,5) material(s) such as expanded polystyrene, balsa wood, etc.

A.2.3 Power supplies to the EUT

All tests should be performed using power supplies wherever possible, including tests on EUT designed for battery-only use. In all cases, power leads should be connected to the EUT's supply terminals (and monitored with a digital voltmeter) but the battery should remain present, electrically isolated from the rest of the equipment, possibly by putting tape over its contacts.

The presence of these power cables can, however, affect the measured performance of the EUT. For this reason, they should be made to be "transparent" as far as the testing is concerned. This can be achieved by routing them away from the EUT and down to the either the screen, ground plane or facility wall (as appropriate) by the shortest possible paths. Precautions should be taken to minimize pick-up on these leads (e.g. the leads could be twisted together, loaded with ferrite beads at 0,15 m spacing or otherwise loaded).

A.2.4 Volume control setting for analogue speech tests

Unless otherwise stated, in all receiver measurements for analogue speech the receiver volume control where possible, should be adjusted to give at least 50 % of the rated audio output power. In the case of stepped volume controls, to volume control should be set to the first step that provides an output power of at least 50 % of the rated audio output power. This control should not be readjusted between normal and extreme test conditions in tests.

A.2.5 Range length

The range length for all these types of test facility should be adequate to allow for testing in the far-field of the EUT i.e. it should be equal to or exceed:

$$\frac{2(d_1 + d_2)^2}{\lambda}$$

where:

d_1 is the largest dimension of the EUT/dipole after substitution (m);

d_2 is the largest dimension of the test antenna (m);

λ is the test frequency wavelength (m).

It should be noted that in the substitution part of this measurement, where both test and substitution antennas are half wavelength dipoles, this minimum range length for far-field testing would be:

$$2\lambda$$

It should be noted in the test report when either of these conditions is not met so that the additional measurement uncertainty can be incorporated into the results.

NOTE 1: **For the fully anechoic chamber**, no part of the volume of the EUT should, at any angle of rotation of the turntable, fall outside the "quiet zone" of the chamber at the nominal frequency of the test.

NOTE 2: The "quiet zone" is a volume within the anechoic chamber (without a ground plane) in which a specified performance has either been proven by test, or is guaranteed by the designer/manufacture. The specified performance is usually the reflectivity of the absorbing panels or a directly related parameter (e.g. signal uniformity in amplitude and phase). It should be noted however that the defining levels of the quiet zone tend to vary.

NOTE 3: **For the anechoic chamber with a ground plane**, a full height scanning capability, i.e. 1 to 4 m, should be available for which no part of the test antenna should come within 1 m of the absorbing panels. For both types of Anechoic Chamber, the reflectivity of the absorbing panels should not be worse than -5 dB.

NOTE 4: **For both the anechoic chamber with a ground plane and the Open Area Test Site**, no part of any antenna should come within 0,25 m of the ground plane at any time throughout the tests. Where any of these conditions cannot be met, measurements should not be carried out.

A.2.6 Site preparation

The cables for both ends of the test site should be routed horizontally away from the testing area for a minimum of 2 m (unless, in the case both types of anechoic chamber, a back wall is reached) and then allowed to drop vertically and out through either the ground plane or screen (as appropriate) to the test equipment. Precautions should be taken to minimize pick up on these leads (e.g. dressing with ferrite beads, or other loading). The cables, their routing and dressing should be identical to the verification set-up.

NOTE: For ground reflection test sites (i.e. anechoic chambers with ground planes and Open Area Test Sites) which incorporate a cable drum with the antenna mast, the 2 m requirement may be impossible to comply with.

Calibration data for all items of test equipment should be available and valid. For test, substitution and measuring antennas, the data should include gain relative to an isotropic radiator (or antenna factor) for the frequency of test. Also, the VSWR of the substitution and measuring antennas should be known.

The calibration data on all cables and attenuators should include insertion loss and VSWR throughout the entire frequency range of the tests. All VSWR and insertion loss figures should be recorded in the log book results sheet for the specific test.

Where correction factors/tables are required, these should be immediately available.

For all items of test equipment, the maximum errors they exhibit should be known along with the distribution of the error e.g.:

- cable loss: $\pm 0,5$ dB with a rectangular distribution;
- measuring receiver: 1,0 dB (standard deviation) signal level accuracy with a Gaussian error distribution.

At the start of measurements, system checks should be made on the items of test equipment used on the test site.

A.3 Coupling of signals

A.3.1 General

The presence of leads in the radiated field may cause a disturbance of that field and lead to additional measurement uncertainty. These disturbances can be minimised by using suitable coupling methods, offering signal isolation and minimum field disturbance (e.g. optical and acoustic coupling).

A.3.2 Data Signals

Isolation can be provided by the use of optical, ultra sonic or infra red means. Field disturbance can be minimized by using a suitable fibre optic connection. Ultra sonic or infra red radiated connections require suitable measures for the minimization of ambient noise.

A.3.3 Speech and analogue signals

Where an audio output socket is not available an acoustic coupler should be used.

When using the acoustic coupler, care should be exercised that possible ambient noise does not influence the test result.

A.3.3.1 Acoustic coupler description

The acoustic coupler comprises a plastic funnel, an acoustic pipe and a microphone with a suitable amplifier. The materials used to fabricate the funnel and pipe should be of low conductivity and of low relative dielectric constant (i.e. less than 1,5).

- The acoustic pipe should be long enough to reach from the EUT to the microphone which should be located in a position that will not disturb the RF field. The acoustic pipe should have an inner diameter of about 6 mm and a wall thickness of about 1,5 mm and should be sufficiently flexible so as not to hinder the rotation of the turntable.
- The plastic funnel should have a diameter appropriate to the size of the loudspeaker in the EUT, with soft foam rubber glued to its edge, it should be fitted to one end of the acoustic pipe and the microphone should be fitted to the other end. It is very important to fix the centre of the funnel in a reproducible position relative to the EUT, since the position of the centre has a strong influence on the frequency response that will be measured. This can be achieved by placing the EUT in a close fitting acoustic mounting jig, supplied by the manufacturer, of which the funnel is an integral part.
- The microphone should have a response characteristic flat within 1 dB over a frequency range of 50 Hz to 20 kHz, a linear dynamic range of at least 50 dB. The sensitivity of the microphone and the receiver audio output level should be suitable to measure a signal to noise ratio of at least 40 dB at the nominal audio output level of the EUT. Its size should be sufficiently small to couple to the acoustic pipe.
- The frequency correcting network should correct the frequency response of the acoustic coupler so that the acoustic SINAD measurement is valid (see IEC 60489-3 [9], Appendix F [A.6]).

A.3.3.2 Calibration

The aim of the calibration of the acoustic coupler is to determine the acoustic SINAD ratio which is equivalent to the SINAD ratio at the receiver output.

A.4 Standard test position

The standard position in all test sites, except the stripline arrangement, for equipment which is not intended to be worn on a person, including hand-held equipment, shall be on a non conducting support, height 1,5 m, capable of rotating about a vertical axis through the equipment. The standard position of the equipment shall be the following:

- a) for equipment with an internal antenna, it shall be placed in the position closest to normal use as declared by the manufacturer;
- b) for equipment with a rigid external antenna, the antenna shall be vertical;
- c) for equipment with a non-rigid external antenna, the antenna shall be extended vertically upwards by a non-conducting support.

Equipment which is intended to be worn on a person may be tested using a simulated man as support.

The simulated man comprises a rotatable acrylic tube filled with salt water, placed on the ground.

The container shall have the following dimensions:

- Height: $1,7 \pm 0,1$ m;
- Inside diameter: 300 ± 5 mm;
- Sidewall thickness: $5 \pm 0,5$ mm.

The container shall be filled with a salt (NaCl) solution of 1,5 g per litre of distilled water.

The equipment shall be fixed to the surface of the simulated man, at the appropriate height for the equipment.

NOTE: To reduce the weight of the simulated man it may be possible to use an alternative tube which has a hollow centre of 220 mm maximum diameter.

In the stripline arrangement the equipment under test or the substitution antenna is placed in the designated test area in the normal operational position, relative to the applied field, on a pedestal made of a low dielectric material (dielectric constant less than 2).

A.5 Test fixture

The test fixture is only needed for the assessment of integral antenna equipment.

A.5.1 Description

The test fixture is a radio frequency coupling device associated with an integral antenna equipment for coupling the integral antenna to a $50\ \Omega$ radio frequency terminal at the working frequencies of the equipment under test. This allows certain measurements to be performed using the conducted measurement methods. Only relative measurements may be performed and only those at or near frequencies for which the test fixture has been calibrated.

In addition, the test fixture may provide:

- a) a connection to an external power supply;
- b) in the case of assessment of speech equipment, an audio interface either by direct connection or by an acoustic coupler.

In the case of non-speech equipment, the test fixture can also provide the suitable coupling means e.g. for the data output.

The test fixture shall normally be provided by the manufacturer.

The performance characteristics of the test fixture shall be approved by the testing laboratory and shall conform to the following basic parameters:

- a) the coupling loss shall not be greater than 30 dB;
- b) a coupling loss variation over the frequency range used in the measurement which does not exceed 2 dB;
- c) circuitry associated with the RF coupling shall contain no active or non-linear devices;
- d) the VSWR at the 50 Ω socket shall not be more than 1,5 over the frequency range of the measurements;
- e) the coupling loss shall be independent of the position of the test fixture and be unaffected by the proximity of surrounding objects or people. The coupling loss shall be reproducible when the equipment under test is removed and replaced;
- f) the coupling loss shall remain substantially constant when the environmental conditions are varied.

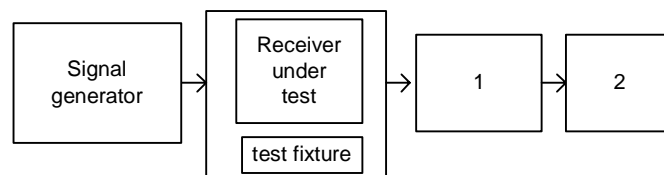
The characteristics and calibration shall be included in the test report.

A.5.2 Calibration

The calibration of the test fixture establishes a relationship between the output of the signal generator and the field strength applied to the equipment placed in the test fixture.

The calibration is valid only at a given frequency and for a given polarization of the reference field.

The actual set-up used depends on the type of the equipment (e.g. data, speech, etc.)



- 1) Coupling device, e.g. AF load/acoustic coupler (in the case of speech equipment).
- 2) Device for assessing the performance, e.g. distortion factor/audio level meter, BER measuring device etc.

Figure A.5: Measuring arrangement for calibration

Method of calibration:

- a) Measure the sensitivity expressed as a field strength, as specified in the present document and note the value of this field strength in dB μ V/m and the polarization used.

- b) Place the receiver in the test fixture which is connected to the signal generator. The level of the signal generator producing:
- a SINAD of 20 dB;
 - a bit error ratio of 0,01; or
 - a message acceptance ratio of 80 %, as appropriate,

shall be noted.

The calibration of the test fixture is the relationship between the field strength in dB μ V/m and the signal generator level in dB μ V emf. This relationship is expected to be linear.

A.5.3 Mode of use

The test fixture may be used to facilitate some of the measurements in the case of equipment having an integral antenna.

It is used in particular for the measurement of the radiated carrier power and usable sensitivity expressed as a field strength under the extreme conditions.

For the transmitter measurements calibration is not required as relative measuring methods are used.

For the receiver measurements calibration is necessary as absolute measurements are used.

To apply the specified wanted signal level expressed in field strength, convert it into the signal generator level (emf) using the calibration of the test fixture. Apply this value to the signal generator.

Annex B (informative): Bibliography

CEPT/ERC/REC 01-06: "Procedure for mutual recognition of type testing and type approval for radio equipment".

CEPT/ERC/DEC(97)10: "ERC Decision of 30 June 1997 on the mutual recognition of conformity assessment procedures including marking of radio equipment and radio terminal equipment".

IEC 60244: "Methods of measurement for radio transmitters".

ITU-R Recommendation BS.468-4: "Measurement of audio-frequency noise voltage level in sound broadcasting".

CEPT/ERC Recommendation 70-03: "Relating to the use of Short Range Devices (SRD)".

History

Document history		
V1.1.1	July 2000	Public Enquiry PE 20001110: 2000-07-12 to 2000-11-10
V1.1.1	April 2001	Vote V 20010615: 2001-04-16 to 2001-06-15
V1.1.1	June 2001	Publication