

Draft **EN 301 145-1** V1.1.1 (1998-02)

European Standard (Telecommunications series)

**Integrated Services Digital Network (ISDN);
Digital Subscriber Signalling System No. one (DSS1) protocol;
Teleaction teleservice;
Part 1: Protocol specification**



European Telecommunications Standards Institute

Reference

DEN/SPS-05106-1 (alo90ico.PDF)

Keywords

ISDN, DSS1, teleaction, teleservice***ETSI Secretariat***

Postal address

F-06921 Sophia Antipolis Cedex - FRANCE

Office address

650 Route des Lucioles - Sophia Antipolis
Valbonne - FRANCE
Tel.: +33 4 92 94 42 00 Fax: +33 4 93 65 47 16
Siret N° 348 623 562 00017 - NAF 742 C
Association à but non lucratif enregistrée à la
Sous-Préfecture de Grasse (06) N° 7803/88

X.400

c= fr; a=atlas; p=etsi; s=secretariat

Internet

secretariat@etsi.fr
<http://www.etsi.fr>

Copyright Notification

No part may be reproduced except as authorized by written permission.
The copyright and the foregoing restriction extend to reproduction in all media.

Contents

Intellectual Property Rights.....	5
Foreword	5
1 Scope	6
2 References	6
2.1 Normative references	6
2.2 Informative references	7
3 Definitions and abbreviations	7
3.1 Definitions	7
3.2 Abbreviations.....	9
4 Description	9
4.1 Semi-permanent access	11
4.2 PLL access	11
5 Reference configuration and protocol architecture.....	11
5.1 Reference configuration.....	11
5.2 Protocol architecture for realizing the teleaction teleservice	14
6 Operational requirements	16
6.1 Provision and withdrawal.....	16
6.2 Requirements at the service provider network side.....	16
6.3 Requirements at the service provider user side	16
6.4 Requirements at the end-user network side.....	16
6.5 Requirements at end-user user side	16
7 Coding requirements	16
7.1 Coding principles.....	16
7.1.1 Maintenance frame layouts.....	16
7.1.2 Message Format	17
7.1.2.1 LOOP REQUEST.....	17
7.1.2.2 LOOP RESPONSE.....	17
7.1.2.3 REPORT	18
7.1.3 Information elements coding.....	18
7.1.3.1 Message type	18
7.1.3.2 Loop originator	19
7.1.3.3 Loop destination	19
7.1.3.4 DLCI.....	19
7.1.3.5 Diagnostic	20
7.1.3.6 Report type	20
7.1.3.7 Test data	20
7.1.3.8 Terminal data.....	20
8 State definitions	21
9 Procedures at the coincident S and T reference point.....	21
9.1 Data link establishment at EU/SP interface	21
9.1.1 Normal procedures	21
9.1.1.1 Link establishment by EUT	21
9.1.1.2 Link establishment by SPT	21
9.1.2 Exceptional procedures	21
9.2 Data link disconnection at EU/SP interface	22
9.2.1 Normal procedures	22
9.2.2 Exceptional procedures	22
9.3 Error procedures	22

10	Procedures for interworking with private ISDNs	22
11	Interaction with other networks	22
12	Interaction with supplementary services	22
13	Maintenance, polling and broadcast procedures	23
13.1	General	23
13.2	Procedures	23
13.2.1	General	23
13.2.2	Loop procedure.	23
13.2.2.1	LOOP REQUEST message generation by the TMF	24
13.2.2.2	LOOP REQUEST message relaying	24
13.2.2.3	LOOP REQUEST message reception by the requested loop destination	24
13.2.2.4	LOOP RESPONSE message generation by the actual loop destination	24
13.2.2.5	LOOP RESPONSE message relaying	25
13.2.2.6	LOOP RESPONSE message reception by the TMF	25
13.2.2.7	Expiry of the loop timer	25
13.2.2.8	Loop timer value	25
13.2.3	Alarm reporting procedures	25
13.2.3.1	Detection of an alarm at the EUT	25
13.2.3.2	Detection of an alarm situation at the SPT	26
13.2.3.3	Detection of an alarm situation at the TMF	26
13.2.4	Alarm clearance	26
13.3	Broadcast procedures	26
13.4	Forward compatibility procedures.	27
14	Parameter values	27
15	Dynamic description	27
Annex A (informative):	Signalling flows	28
Annex B (informative):	Functional capabilities and information flows for an FRF	31
B.1	Introduction and scope	31
B.2	Description	31
B.3	Derivation of the functional model	31
B.3.1	Description of the functional entities	32
B.3.1.1	Description of the Connection Related Functional entity (CRF)	32
B.3.1.2	Description of the Basic Routing Functional (BRF) entity	32
B.3.1.3	Description of the Database Functional (DF) entity	33
B.4	Information flows	33
B.4.1	Contents of TX_FRAME	34
B.4.2	Contents of CHECK.req	34
B.4.3	Contents of CHECK.resp	34
B.4.4	Contents of REJ_FRAME	34
B.5	Functional entity actions	34
B.6	SDL diagrams	36
B.7	Network physical location scenarios	36
History	37

Intellectual Property Rights

IPRs essential or potentially essential to the present document may have been declared to ETSI. The information pertaining to these essential IPRs, if any, is publicly available for **ETSI members and non-members**, and can be found in ETR 314: *"Intellectual Property Rights (IPRs); Essential, or potentially Essential, IPRs notified to ETSI in respect of ETSI standards"*, which is available **free of charge** from the ETSI Secretariat. Latest updates are available on the ETSI Web server (<http://www.etsi.fr/ipr>).

Pursuant to the ETSI Interim IPR Policy, no investigation, including IPR searches, has been carried out by ETSI. No guarantee can be given as to the existence of other IPRs not referenced in ETR 314 (or the updates on <http://www.etsi.fr/ipr>) which are, or may be, or may become, essential to the present document.

Foreword

This European Standard (Telecommunications series) has been produced by ETSI technical Committee Signalling Protocols and Switching (SPS), and is now submitted for the Public Enquiry phase of the ETSI standards Two-step Approval Procedure.

The present document is part 1 of a multi-part EN covering the Digital Subscriber Signalling System No.one (DSS1) protocol specification for the Integrated Services Digital Network (ISDN) teleaction teleservice, as described below:

Part 1: "Protocol specification";

Part 2: "Protocol Implementation Conformance Statement (PICS) proforma specification".

In accordance with CCITT Recommendation I.130, the following three level structure is used to describe the teleservices as provided by European public telecommunications operators under the pan-European ISDN:

- Stage 1: is an overall service description, from the user's standpoint;
- Stage 2: identifies the functional capabilities and information flows needed to support the service described in stage 1; and
- Stage 3: defines the signalling system protocols and switching functions needed to implement the service described in stage 1.

The present document details the stage 3 aspects (signalling system protocols and switching functions) needed to support the teleaction teleservice. The stage 1 aspects are detailed in EN 301 131. The stage 2 aspects of the teleaction teleservice have not been specified.

Proposed national transposition dates	
Date of latest announcement of this EN (doa):	3 months after ETSI publication
Date of latest publication of new National Standard or endorsement of this EN (dop/e):	6 months after doa
Date of withdrawal of any conflicting National Standard (dow):	6 months after doa

1 Scope

The present document specifies the stage three of the Teleaction teleservice for the pan-European Integrated Services Digital Network (ISDN) as provided by the European public telecommunication operators at the T reference point or coincident S and T reference point (as defined in CCITT Recommendation I.411 [1]). Stage three identifies the protocol procedures and switching functions needed to support a telecommunications service (see CCITT Recommendation I.130 [2]).

The present document also provides guidance on the network functionality required to implement the Teleaction service (see annex A). The functional capabilities and information flows of such network entities are described. In the absence of a stage 2 description this information has been included in the present document. This does not preclude its future publication as a separate stage 2 standard.

In addition, the present document specifies the protocol requirements at the T reference point where the service is provided to the user via a private ISDN.

The present document does not specify the additional requirements where the service is provided to the user via a telecommunications network that is not an ISDN, but does include interworking requirements of other networks with the public ISDN.

Teleaction is a service providing for reliable, low volume, data communication and allied processing to users. The Teleaction teleservice may be used for applications such as monitoring, indicating, controlling and verifying of remote events, operations, and measurements.

Charging principles are outside the scope of the present document.

Further parts of the present document specify the method of testing required to identify conformance to the present document.

The present document is applicable to equipment, supporting the Teleaction teleservice, to be attached at either side of a T reference point or coincident S or T reference point when used as an access to the public ISDN.

2 References

References may be made to:

- a) specific versions of publications (identified by date of publication, edition number, version number, etc.), in which case, subsequent revisions to the referenced document do not apply; or
- b) all versions up to and including the identified version (identified by "up to and including" before the version identity); or
- c) all versions subsequent to and including the identified version (identified by "onwards" following the version identity); or
- d) publications without mention of a specific version, in which case the latest version applies.

A non-specific reference to an ETS shall also be taken to refer to later versions published as an EN with the same number.

2.1 Normative references

- [1] CCITT Recommendation I.411 (1988): "ISDN user-network interfaces - reference configurations".
- [2] CCITT Recommendation I.130 (1988): "Method for the characterization of telecommunication services supported by an ISDN and network capabilities of an ISDN".
- [3] CCITT Recommendation I.112 (1988): "Vocabulary terms for ISDNs".

- [4] CCITT Recommendation I.210 (1988): "Principles of telecommunication services supported by an ISDN and the means to describe them".
- [5] EN 50136-1-1 (1996): Alarm Transmission Systems and Equipment, Part 1-1: General Requirements for Alarm Transmission Systems.
- [6] CCITT Recommendation X.25 (1988): "Interface between data terminal equipment (DTE) and data circuit-terminating equipment (DCE) for terminals operating in the packet mode and connected to public data networks by dedicated circuit".
- [7] ETS 300 011: "Integrated Services Digital Network (ISDN); Primary rate user-network interface, layer 1 specification and test principles".
- [8] ETS 300 012: "Integrated Services Digital Network (ISDN); Basic rate user-network interface, layer 1 specification and test principles".
- [9] ETS 300 049: "Integrated Services Digital Network (ISDN); Packet mode bearer service (PMBS) ISDN virtual call (VC) and permanent virtual circuit (PVC) bearer services provided by the D-channel of the user access: basic and primary rate".
- [10] ETS 300 402-1: "Integrated Services Digital Network (ISDN); Digital Subscriber Signalling System No. One (DSS1) protocol; Data link layer; Part 1: General aspects [ITU Recommendation Q.920 (1993), modified]".
- [11] ETS 300 402-2: "Integrated Services Digital Network (ISDN); Digital Subscriber Signalling System No. One (DSS1) protocol; Data link layer; Part 2: General protocol specification [ITU Recommendation Q.921 (1993), modified]".
- [12] ETS 300 099: "Integrated Services Digital network (ISDN); Specification of the Packet Handler access point Interface (PHI)".
- [13] ETS 300 403-1: "Integrated Services Digital Network (ISDN); Digital Subscriber Signalling System No. One (DSS1) protocol; Signalling network layer for circuit mode basic call control; Part 1: Protocol specification [ITU Recommendation Q.931 (1993), modified]".
- [14] EN 301 131: "Integrated Services Digital Network (ISDN); Teleaction teleservice; Service description".

2.2 Informative references

- [15] CCITT Recommendation I.233 (1991): "Frame mode bearer services".
- [16] ITU-T Recommendation Q.72 (1993): "Stage 2 description for packet mode service".

3 Definitions and abbreviations

3.1 Definitions

For the purposes of the present document, the following definitions apply:

bd channel: A 64 kbits timeslot over which multiple D channel connections are multiplexed using the procedures of ETS 300 099 [12], clause 9.

bd bundle: A collection of Bd channels.

Basic Network Provider (BNP): Entity responsible for the installation and the maintenance of the network supporting the teleaction service.

End User (EU): Entity to whom a teleaction application service is provided or who is affected by that application service.

End User Terminal (EUT): A device (or location of a device) that, depending on the application (e.g. by monitoring of subdevices):

- on the basis of local conditions or by interrogation, generates information and presents this information for transmission by the network to a Service Provider (SP);
- receives information from a SP in order to affect local conditions;
- upon polling requests received from a Teleaction Management Function (TMF) executes the requested local actions (e.g. authorization, functionality checks, etc.) and sends appropriate responses to the TMF.

NOTE: Authorization and functionality checks are outside the scope of the present document.

EU access capability: The telecommunication means used between an EUT and a TMF (e.g. ISDN bearer service, dedicated connection, etc.).

Integrated Services Digital Network (ISDN): See CCITT Recommendation I.112 [3] subclause 2.3 definition 308.

network: The DSS1 protocol entity at the network side of the user network interface.

Service Provider (SP): Entity which, by using one or more TMFs, provides a teleaction application service to one or more EUs.

NOTE: The SP may be the BNP, the TMFP, or another organization responsible for one or more SPTs.

Service Provider Terminal (SPT): A device (or location of such a device) which, depending on the application:

- receives information from one or more EUTs for handling and processing in accordance with the application service offered by the SP;
- generates control messages and information requests and presents that information for transmission to one or more EUTs;
- monitors EUTs on the network, either by retrieving EUT status information stored in TMFs, and/or by receiving status information automatically from TMFs (e.g. alarms);
- receives polling requests from TMFs and sends appropriate responses to the TMF. Execution of local procedures such as authorization and functionality check are outside the scope of the present document;
- transfers to the TMF information to be broadcasted to the EUTs, if the broadcast functionality is supported by the TMF.

SPT access capability: The telecommunication means used between a SPT and a TMF (e.g. ISDN bearer service, dedicated connection, etc.).

service; telecommunication service: See CCITT Recommendation I.112 [3] subclause 2.2 definition 201.

supplementary service: See CCITT Recommendation I.210 [4] subclauses 2.4.

teleaction application: One specific end to end application offered by a service provider using the teleaction service.

teleaction service: The teleaction service is the transport mechanism used by a teleaction application.

teleservice: See CCITT Recommendation I.112 [3], subclause 2.2, definition 203

Teleaction Management Function (TMF): Set of network functions added to either the public ISDN or assigned to a separate public, or private, network entity. The tasks of the TMF are:

- to ensure reliable communication paths between the EUTs and the SPT, i.e. to ensure available and secure access for the EUTs to the network and communication paths for the SPT in the ISDN, respectively;
- authorization of connected EUTs/SPTs;
- EUT/SPT functionality check;
- to address the appropriate EUT/SPT for transfer of information generated by SPT/EUT;

- as a TMFP option, to broadcast appropriate EUTs for transfer of information generated by a SPT.

Teleaction Management Function Provider (TMFP): Entity responsible for the installation and maintenance of one or more of the TMFs. A TMFP may be the same as the BNP.

user: The DSS1 protocol entity at the user side of the user network interface.

3.2 Abbreviations

For the purposes of the present document, the following abbreviations apply:

BNP	Basic Network Provider
BRA	Basic Rate Access
BRF	Basic Routing Functional
CCAT	Call Control Agent for Teleaction
CEI	Connection Endpoint Identifier
CRF	Connection Related Function
CSPDN	Circuit Switched Public Data Network
DF	Database Functional
DLCI	Data Link Connection Identifier
DSS1	Digital Subscriber Signalling System No. one
EU	End User
EUT	End User Terminal
FH	Frame Handler
FRF	Frame Routing Function
ISDN	Integrated Services Digital Network
LAPD	Link Access Procedure for the D channel
LE	Local Exchange
LIC	Link Identification Code
NT1	Network Termination type 1
NT2	Network Termination type 2
OSI	Open System Interconnection
PFH	Private Frame Handler
PH	Packet Handler
PICS	Protocol Implementation Conformance Statement
PLL	Pre-allocated Logical Link
PMBS	Packet Mode Bearer Service
PRA	Primary Rate Access
PSPDN	Packet Switched Public Data Network
PSTN	Public Switched Telephone Network
PTN	Private Telecommunications Network
SAPI	Service Access Point Identifier
SP	Service Provider
SPT	Service Provider Terminal
TA	Terminal Adapter
TEI	Terminal Endpoint Identifier
TMF	Teleaction Management Function
TMFP	Teleaction Management Function Provider

4 Description

Teleaction is a service providing for reliable, low volume, data communication and allied processing to users. The Teleaction teleservice may be used for applications such as monitoring, indicating, controlling and verifying of remote events, operations, and measurements.

Teleaction is applicable to both basic rate and primary rate, access.

The service provides a datalink layer service over which, by means of a suitable convergence protocol, the OSI connectionless-mode network service may operate. An explicit indication (SAPI=12) is used at the data link layer to identify a teleaction communication. This indication is used to filter the teleaction frames, from other frames which may

co-exist on the interface e.g. call-control frames (SAPI=0) and packet data frames (SAPI=16). Once filtered, the frames can be directed towards a TMF. The method of filtering used by the network is outside the scope of the present document. The network uses a network-internal frame address structure (DLCI) to uniquely identify both SPs, and EUs, to the TMF. Routing of frames is based upon the Data Link Connection Identifier (DLCI).

A network may be comprised of multiple TMFs, and multiple SPs. Figure 1 illustrates some typical access scenarios that can exist in a network. The figure is not exhaustive, but illustrates a possible network implementation where there are multiple SPs. It is possible that within the TMF "cloud", multiple TMFs could exist.

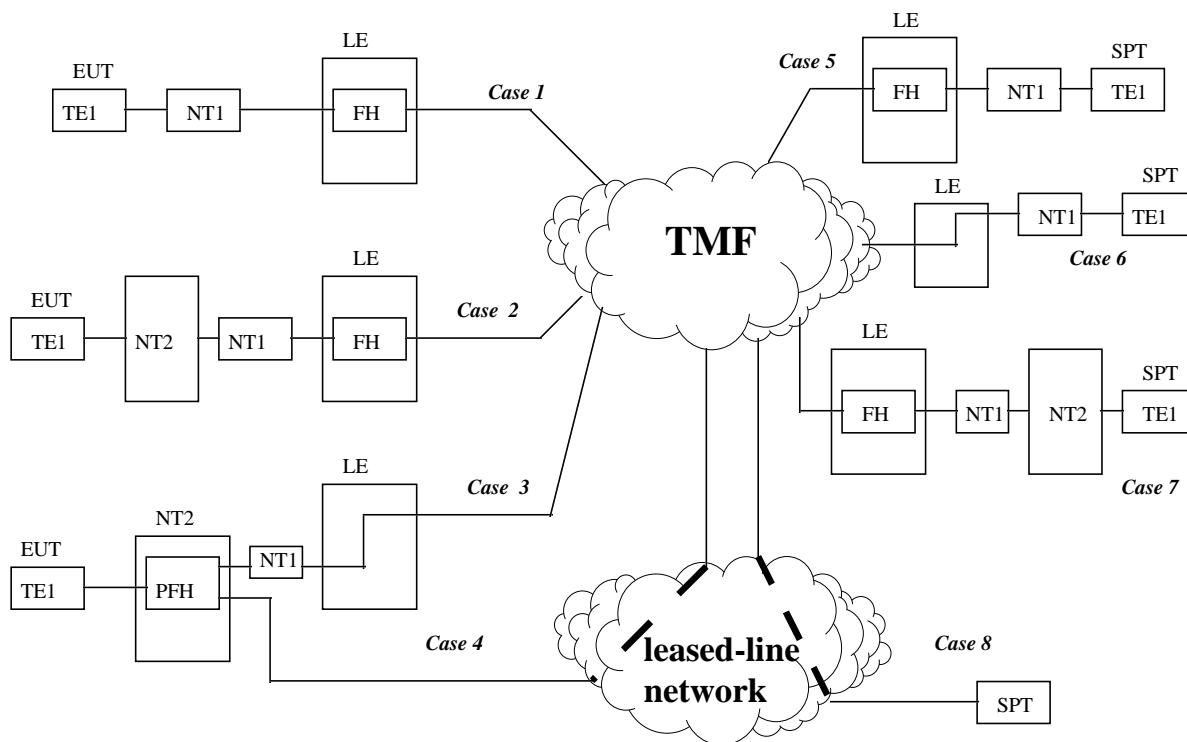


Figure 1: Teleaction access scenarios

The access scenarios presented are:

- Case 1: EUT connected to S/T reference point.
- Case 2: EUT connected to S reference point.
- Case 3: EUT connected to S reference point but with a Frame Handler (FH) within the private network. The PFH is connected by a semipermanent B channel to the TMF.
- Case 4: EUT connected to S reference point, with a FH within the private network, and the PFH connected to the TMF via a leased-line.
- Case 5: SPT connected to S/T reference point.
- Case 6: SPT connected to S/T reference point, but with semipermanent B channel connection to TMF.
- Case 7: SPT connected to S reference point (D or semipermanent B channel connections possible).
- Case 8: SPT connected via leased-line to the TMF.

NOTE 1: The TMF being implemented in the local exchange is not shown in figure 1, but is a possibility.

One EUT is logically associated with only one SPT.

NOTE 2: The context where an EUT communicates with several SPTs is outside the scope of the present document.

Of the three different methods of layer 2 activation defined in ETS 300 049 [9] (semipermanent, on demand fixed TEI (PLL), on demand variable TEI), only two are applicable to teleaction. Where either of these methods are used, the TEI value shall lie in the non-automatic range [0-63].

4.1 Semi-permanent access

For semi-permanent access, logical links between an EUT and a TMF, or between a SPT and a TMF, are allocated at subscription time. The network shall keep the access connection in the established state. Layer 2 addresses at the user-network interface are allocated at subscription time.

4.2 PLL access

For PLL access, D channel logical links between an EUT and a TMF, or between a SPT and a TMF, are permanently allocated on a subscription basis, but they can be activated and deactivated (ABMEDISC) on demand. The activation, or deactivation, of the link may be initiated by either endpoint. Layer 2 addresses at the user-network interface are allocated at subscription time.

5 Reference configuration and protocol architecture

5.1 Reference configuration

The teleaction teleservice consists of interaction between 3 essential entities: the EUT, the TMF and the SPT. As an abstraction of an actual instance of the service, these entities may be considered as part of functional planes. The EU plane and the SP plane can only communicate with each other by passing through the TMF plane. This is illustrated in figure 2.

The figure illustrates the possibility for multiple EUTs to communicate with individual SPTs, over a single connection to the TMF. The TMF is shown as being able to route the calls from EUTs to an SPT. Further, multiple SPTs may be contactable over the one link from the TMF.

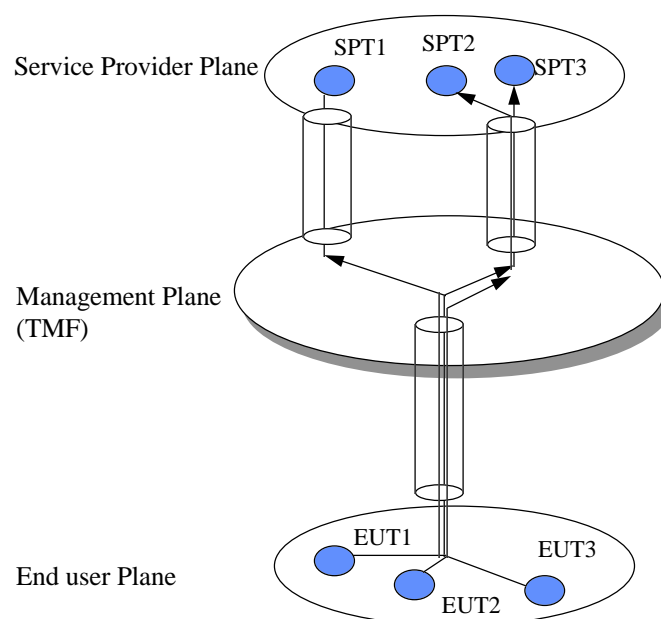


Figure 2: Abstract instance of the teleaction teleservice

Figure 3 illustrates the possibilities for realization of the TMF function within the TMF plane. The TMF may be located in a single physical location (option A), possibly being duplicated for reliability reasons. The TMF may implement various layers of the OSI reference model. The implementation of these layers is application and system dependent. The possibility exists for particular higher layer functions to be centralized in a particular location within the TMF plane, and for lower layer functions to be distributed (option B). The extent to which this can be accomplished is outside the scope of the present document.

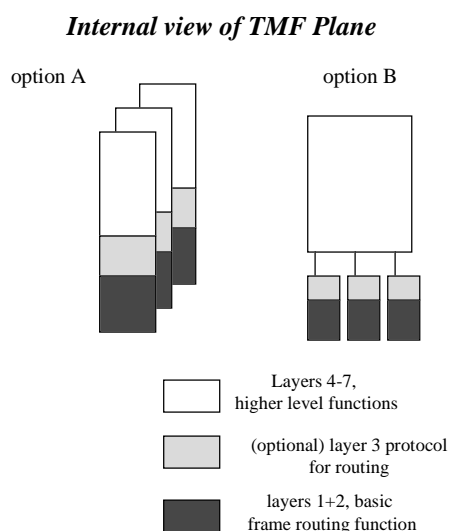


Figure 3: Possible options for realization of the TMF function within the TMF plane

Irrespective of the application, the TMF shall perform a routing function between the EUT and its associated SPT. This requires a minimum implementation of layers 1 and 2 to perform frame routing, and in some particular circumstances, a

layer 3 protocol for additional routing information. This Frame Routing Function (FRF) may be performed in a centralized manner, or may be integrated into local exchanges. The FRF receives frames which have been multiplexed by a Frame Handler (FH) in accordance with clause 9 of ETS 300 099 [12]. This allows for the possibility that the FRF may route both teleaction and D channel CCITT Recommendation X.25 [6] traffic. The frames are multiplexed onto channels termed Bd channels. Where a group of such channels exist between a FH and the TMF, it is referred to as a Bd bundle.

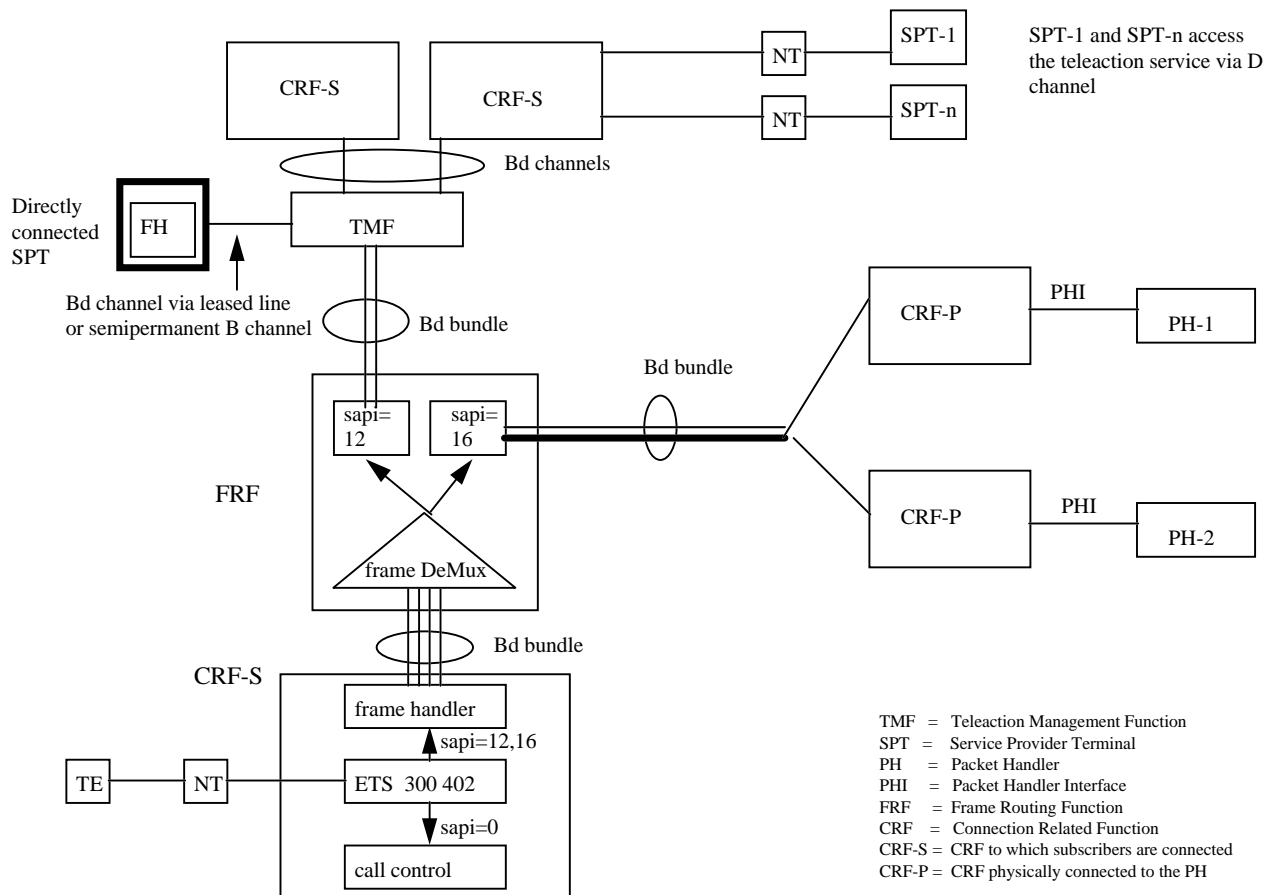


Figure 4: Centralized Frame Routing Function architecture

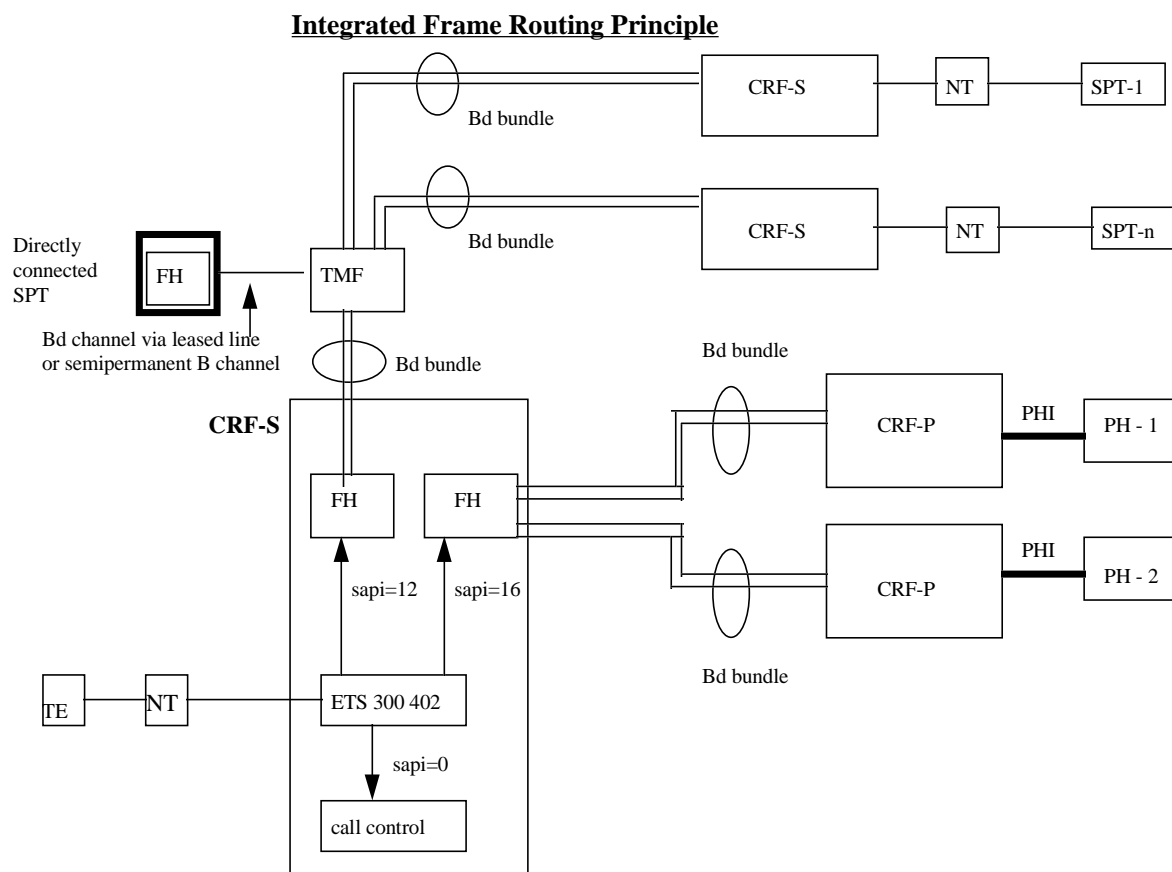


Figure 5: Integrated FRF Architecture

5.2 Protocol architecture for realizing the teleaction teleservice

Figure 6 illustrates a possible protocol architecture for implementation of the teleaction teleservice. Different possibilities exist depending on the applications supported and the mode of connection of the SPT to the TMF. The figure does not describe the possibilities that may exist where application dependent protocols could be, or are terminated in the TMF e.g. for authentication of users etc. In these cases the TMF protocol may incorporate some or all of the application protocol stacks implemented in the EUT and SPT.

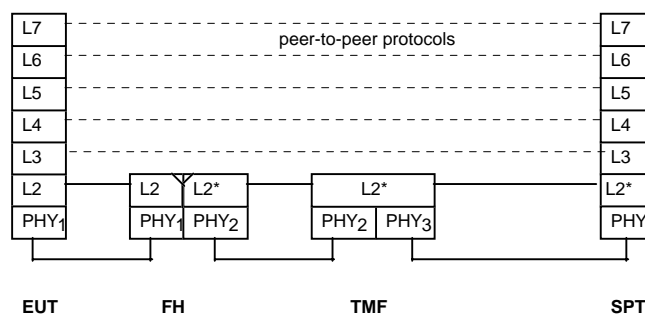
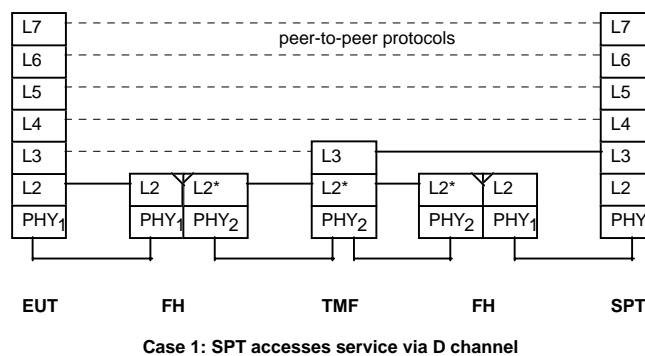


Figure 6: Possible protocol architectures for teleaction depending on SPT access connection

PHY₁: Physical layer - ETS 300 011 [7], ETS 300 012 [8].

PHY₂: Physical layer used between FH and TMF, typically based upon a 64 kbits timeslot of a G.703 transmission system.

PHY₃: Physical layer for leased-line connection. This is network specific.

L2: LAPD layer 2 protocol, ETS 300 402-2 [11].

L2*: LAPD layer 2 protocol extended (LAPD-E) ETS 300 099 [12].

L3 : Layer 3 protocol e.g. CCITT Recommendation X.25 [6], OSI CLNP, IP.

L4-L7: Layers 4 to 7 higher layer protocols.

NOTE: The scenario illustrated in Case 2 represents the TMF being remote from the FH. Where the TMF is integrated with the FH, then the protocol stacks of the FH and TMF would be merged.

For Case 1 in figure 6, the TMF implements a layer 3 protocol between itself and the SPT. This arises because the SPT is not directly connected to the TMF. When the SPT is accessing the teleaction teleservice over the D channel, then the LAPD-E protocol between a FH in the LE serving the SPT, and the TMF, only indicates the DLCI of the SPT. For Case 1, there is no mechanism whereby the LAPD can route frames to/from the SPT which also contain the address of the EUT. Hence a layer 3 protocol for routing is required. This is not necessary between TMF and EUT as the TMF can include in LAPD-E frames which it routes to an EUT, the DLCI of the EUT.

Additional information relating to functional entities and information flows is contained in annex B.

6 Operational requirements

6.1 Provision and withdrawal

The provision of the Teleaction teleservice shall be by prior arrangement with the Basic network Provider (BNP), on a subscription basis. The Teleaction teleservice shall be withdrawn at the EU's or SP's request, or for administrative reasons.

6.2 Requirements at the service provider network side

Where the SPT is using D channel access, the network shall register the DLCI of the SPT, with the TMF. The network shall register whether the procedures of clause 9 or clause 10 of the present document shall apply.

As a network option, the connection(s) between SPT and TMF may be configured as a permanent or semipermanent Bd channel, or Bd bundle. In this case, the procedures of ETS 300 099 [12], clause 9 shall apply. The SPT and TMF shall bilaterally agree on a fixed DLCI value to be used for addressing local communications between SPT and TMF e.g. for alarm reporting.

6.3 Requirements at the service provider user side

When PLL or semipermanent access to the TMF from the SPT is being used, the SP shall register the TEI of the SPT with the network.

6.4 Requirements at the end-user network side

The network shall register the DLCI of the EUT with the TMF and the SPT. The network shall register whether the procedures of clause 9 or clause 10 of the present document shall apply.

NOTE: Some networks may require the EU to register the speed at which the EUT will operate.

6.5 Requirements at end-user user side

The EU shall register the TEI of the EUT with the network.

7 Coding requirements

7.1 Coding principles

The LAPD frame structure and frame types (commands and responses) as defined in ETS 300 402-2 [11] apply. To perform additional maintenance functions, necessary to enhance the reliability of the data link service offered to the teleaction user, some additional frame formats are defined below.

The maintenance flow is applicable for semipermanent and PLL access. Support of the maintenance flow is mandatory for both network and subscriber equipment. This maintenance flow is based on the use of UI frames with SAPI value 12 and is intended for logical connectivity checking, fault location and alarm reporting along the logical link path. The procedures associated with use of these frames are described in clause 13.

7.1.1 Maintenance frame layouts

The format of LAPD UI frames for the maintenance flow is described in figure 7 for the ISDN access. The format is identical for LAPD-E except that the address field is 4 octets in length.

8	7	6	5	4	3	2	1	Bits/Octets
0	1	1	1	1	1	1	0	1
Address field SAPI								2
0	0	1	1	0	0	C	0	3
Control field P = 0								4
0	0	0	1	0	0	0	1	5
Management Entity Identifier								6
0	0	0	1	0	0	0	1	N-3
Message								N-2
FCS 1st octet								N-1
FCS 2nd octet								N
0	1	1	1	1	1	1	0	

Figure 7: Format of UI frames for the maintenance flow on the D channel

7.1.2 Message Format

Three messages are defined: LOOP REQUEST, LOOP RESPONSE, and REPORT.

In a message, mandatory information elements should precede optional information elements. The order of an information element need not follow the order contained in tables 1, 2 or 3.

7.1.2.1 LOOP REQUEST

The LOOP REQUEST message is sent by the originator of the loop. Table 1 defines the LOOP REQUEST message content and each information element.

Table 1: LOOP REQUEST message content

Information element	Reference (subclause)	Direction	Type	Length
Message type	8.1.3.1	n->u	M	1
Loop originator	8.1.3.2	n->u	M	3
Loop destination	8.1.3.3	n->u	M	3
Diagnostic	8.1.3.5	n->u	M	3
Test data	8.1.3.7	n->u	O	2- (see note)
NOTE: The maximum length is (N201 - 12) octets.				

7.1.2.2 LOOP RESPONSE

The LOOP RESPONSE message is a reply to a LOOP REQUEST message. Table 2 defines the LOOP RESPONSE message content and each information element.

Table 2: LOOP RESPONSE message content

Information element	Reference (subclause)	Direction	Type	Length
Message type	8.1.3.1	u->n	M	1
Loop originator	8.1.3.2	u->n	M	3
Loop destination	8.1.3.3	u->n	M	3
Diagnostic	8.1.3.5	u->n	M	3
Test data	8.1.3.7	u->n	O	2- (see note)
NOTE: The maximum length is (N201 - 12) octets.				

7.1.2.3 REPORT

The REPORT message is sent to indicate to the TMF, EUT or SPT that an alarm event has occurred, or that a broadcast is requested. Table 3 defines the REPORT message content and each information element.

Table 3: REPORT message content

Information element	Reference (subclause)	Direction	Type	Length
Message type	8.1.3.1	both	M	1
Report type	8.1.3.6	both	M	3
Diagnostic	8.1.3.5	both	M	3
DLCI	ETS 300 099 [12]	n-->u	O (se note 1)	6
Terminal data	8.1.3.8	both	O	2- (see note 2)

NOTE 1: Mandatory if the message is generated by an EUT. The TMF inserts the DLCI of the originating EUT before passing the REPORT to the SPT. Absence of the information element indicates that the TMF or SPT has originated the message.

NOTE 2: The maximum length is (N201 - 15) octets when the DLCI is included.

7.1.3 Information elements coding

The information element structure follows that of the basic call protocol ETS 300 403-1 [13], and consists of an information element identifier octet, followed by a length octet followed by the content, except for the Message type information element which is a single octet in length.

Bit	8 7 6 5 4 3 2 1	Octects
	Information element identifier	1
	Length	2
	Content	3-*

Figure 8: Structure of information elements

Table 4: Information element identifier

Information element	Bit	8	7	6	5	4	3	2	1	Length
Loop originator		0	0	0	1	0	0	0	1	3
Loop destination		0	0	0	1	0	0	1	0	3
Diagnostic		0	0	0	1	0	0	1	1	3
DLCI		0	0	0	0	0	0	0	1	6
Test data		0	0	0	1	0	1	0	0	2-*
Terminal data		0	0	0	1	0	1	0	1	2-*
Report type		0	0	0	1	0	1	1	0	3

7.1.3.1 Message type

The purpose of the Message type is to identify the function of the message being sent.

The message type is coded as shown in figure 9 and table 5, and is a single octet in length. Bit 8 is reserved for possible future use as an extension bit.

Bit	8 7 6 5 4 3 2 1	Octects
	0	Message type

Figure 9: Message type

Table 5: Message Types

Bits							
8	7	6	5	4	3	2	1
0	0	0	0	0	0	0	0
- escape to nationally specific message type; see note.							
0	0	0	0	1	0	0	1
- LOOP REQUEST							
0	0	0	0	1	0	1	0
- LOOP RESPONSE							
0	0	0	0	1	0	1	1
- REPORT							
NOTE: When used, the Message type is defined in the following octet(s), according to the national specification.							

7.1.3.2 Loop originator

The purpose of the Loop originator information element is to identify the entity that initiates the loop procedure.

The Loop originator information element octet is coded as shown in table 6, and is a single octet in length.

Table 6: Loop originator information element

Bits							
8	7	6	5	4	3	2	1
0	1	0	0	0	0	0	0
- PH							
0	1	1	0	0	0	0	0
- TMF							

Values not identified in table 6 are reserved.

7.1.3.3 Loop destination

The purpose of the Loop destination information element is to identify in the LOOP REQUEST message the entity which should respond. In the LOOP RESPONSE message, this information element identifies the entity which actually responds.

The Loop destination information element is coded as shown in table 7, and is a single octet in length.

Table 7: Loop destination information element

Bits							
8	7	6	5	4	3	2	1
0	0	0	0	0	0	0	1
- TE1							
0	0	0	0	0	0	1	0
- TA							
0	0	0	0	0	1	0	0
- NT2							
0	0	0	0	1	0	0	0
- PTN							
0	0	0	0	1	1	1	1
- LAPD termination (see note)							
0	1	0	0	0	0	0	0
- Reserved							
to							
0	1	1	1	1	1	1	1
1	0	0	0	0	0	0	0
- FH CRF-S							
1	0	0	0	0	0	0	1
- FH CRF-P							
NOTE: A LAPD termination is the entity along the logical link path farthest from the TMF. This code point is used by the loop originator in the LOOP REQUEST message when it wants to initiate an end-to-end loop, but has no knowledge of the equipment which actually terminates the logical link. This code point shall not be used in the LOOP RESPONSE message.							

7.1.3.4 DLCI

The DLCI information element identifies the originator of the REPORT message, when sent from EUT to SPT. This information element is 6 octets in length. The format of the information element is identical to the DLCI information element described in ETS 300 099 [12] subclause 13.2.1.

7.1.3.5 Diagnostic

The Diagnostic information element provides for the entity that actually replies to the LOOP REQUEST message, or that generates an REPORT message, a means to inform about possible error conditions.

The Diagnostic information element is coded as shown in table 8, and is a single octet in length.

Table 8: Diagnostic

Bits								
8	7	6	5	4	3	2	1	
0	0	0	0	0	0	0	0	- Loop successful
0	0	0	0	0	0	0	1	- DLCI not registered
0	0	0	0	0	0	1	0	- Loop destination unreachable
0	0	0	0	0	0	1	1	- Transmission path unavailable due to network element failure
0	0	0	0	0	1	0	0	- Transmission path unavailable due to customer interface/premises failure
0	0	0	0	0	1	0	1	- Reserved for future extension
up to								
0	1	1	1	1	1	1	1	- Network dependent diagnostics
1	0	0	0	0	0	0	0	
up to								
1	1	1	1	1	1	1	1	

7.1.3.6 Report type

The Report type information element is a single octet in length, and indicates what type of report is contained in the Report message. It is used to distinguish between alarm reports and broadcast requests.

The Report type information element is coded as shown in table 9.

Table 9: Report type information element

Bits							
8	7	6	5	4	3	2	1
0	0	0	0	0	0	0	0
- Alarm event							
0	0	0	0	0	0	0	1
- Alarm cleared							
0	0	0	0	0	0	1	0
- Broadcast request							
0	0	0	0	0	0	1	1
- Broadcast confirm							
0	0	0	0	0	1	0	0
- Broadcast denied - function not implemented							
0	0	0	0	0	1	0	1
up to							
- Reserved for future extension							
1	1	1	1	1	1	1	1

7.1.3.7 Test data

The test data information element provides a means for the loop originator to send in a LOOP REQUEST message a series of octets. The loop destination which replies to a LOOP REQUEST message shall transparently include the received test data in the LOOP RESPONSE message.

The Test data information element consists of a series of octets whose codings and semantics are determined by the loop originator of the LOOP REQUEST message.

7.1.3.8 Terminal data

The Terminal data information element provides a means for the EUT or SPT to include in a REPORT message a series of octets which may be used to provide further information on the source or extent of an alarm, or in a broadcast context, which should be acted upon by the EUT to alter local conditions.

The terminal data information element consists of a series of octets whose codings and semantics are determined by the teleaction application between EUT and SPT.

8 State definitions

No additional data link states are applicable other than those contained in ETS 300 402-1 [10].

9 Procedures at the coincident S and T reference point

9.1 Data link establishment at EU/SP interface

9.1.1 Normal procedures

9.1.1.1 Link establishment by EUT

Link establishment shall use the procedures contained in ETS 300 402-2 [11] subclause 5.5 using SAPI = 12. Once the link is established information transfer using I frames may occur. For such information transfer, the procedures of ETS 300 402-2 [11] subclause 5.6 shall apply.

9.1.1.2 Link establishment by SPT

Two modes of establishment are possible depending on the support by the TMF of the user plane network layer protocols used between SPT and EUT. Support of such protocols by the TMF is network-dependent.

NOTE 1: A separate protocol could be used to exchange the EUT address between the SPT and TMF than the application network layer protocol used end-to-end between SPT and EUT.

Where the SPT connects to the TMF by means of one or more semipermanent B channels, in-band procedures in accordance with ETS 300 099 [12] clause 9 shall operate. To establish a communication path between SPT and EUT, the SPT shall send to the TMF, over the semipermanent B channel, a SABME command frame containing the DLCI of the EUT.

NOTE 2: Depending on the frame handling technique, on receipt of a SABME from SPT, the TMF may immediately send a UA to SPT, and simultaneously, issue a SABME towards the required EUT. Alternatively, the TMF could relay the SABME received from the SPT towards the EUT, so that any response to the SABME is generated by the EUT. The operation of such procedures is outside the scope of the present document.

Where the SPT accesses the teleaction teleservice via the D channel and where the TMF supports the user plane network layer protocol, a communication path between SPT and TMF must be established prior to any communication between TMF and EUT. The TMF shall use the addressing capabilities of the particular network layer protocol to derive the address (DLCI) of the EUT. The TMF shall then initiate datalink establishment towards the EUT. On successful establishment of a datalink, network layer communication procedures may commence, in accordance with the particular network layer protocol used.

NOTE 3: For an SPT using D channel access, how the TMF notifies the SPT that the communication path to the EUT is established is outside the scope of the present document.

9.1.2 Exceptional procedures

If end-to-end link establishment between EUT and SPT fails, then, if information is available e.g. as a result of polling procedures or receipt of alarm indications, the TMF may transfer in a REPORT message the reason for the link establishment failure to the SPT.

No other additional provisions beyond those contained in ETS 300 402-2 [11] have been identified.

9.2 Data link disconnection at EU/SP interface

9.2.1 Normal procedures

The procedures of ETS 300 402-2 [11] subclause 5.5 apply.

9.2.2 Exceptional procedures

No additional provisions beyond those contained in ETS 300 402-2 [11] have been identified.

As a TMFP option, when the SPT is connected via D channel, and the TMF implements the network layer protocol between EUT and SPT, then on clearing of the last "call" on the SPT interface, the TMF may delay data link disconnection for a period of time, to allow for any new calls to be quickly established over the interface. The duration of this waiting period is network dependent.

Application and network dependent actions may occur as a result of unexpected data link disconnection during information transfer. Such actions may take the form of event recording for statistics purposes, or may result in external alarm indications being presented to the EU/SP. Procedures to recover from such unexpected data link disconnections are outside the scope of the present document.

9.3 Error procedures

When the SPT is connected via D channel, on receipt of a REPORT message originated by an EUT which contains an invalid DLCI information element or one containing an unused DLCI value, the SPT should discard the message. If a Terminal data information element is present, it may examine the Terminal data information element for possible identification of the originating terminal.

If the EUT, SPT or TMF receives a message containing an undefined information element then it shall ignore this information element and continue processing the remainder of the message.

10 Procedures for interworking with private ISDNs

If the EUT, SPT or TMF receives an unrecognized message then it shall discard this message.

Any one of the entities necessary for a teleaction teleservice - i.e. EUT, SPT and TMF - may be situated within a private network entity.

No additional requirements beyond those in clause 10 of the present document have been identified.

NOTE: BNP may limit, by mutual agreement with TMFP's, the rate at which calls to EUT's or SPT's may be presented to the public network from a private TMF. The operation of such a restriction is network-specific.

11 Interaction with other networks

The teleaction teleservice may be provided to users (EU's or SP's) connected to networks other than the ISDN. The procedures for interworking with such networks are outside the scope of the present document.

12 Interaction with supplementary services

None identified.

13 Maintenance, polling and broadcast procedures

13.1 General

Use of the maintenance flow shall permit polling and regular reports on the availability of EUTs to be furnished to the TMF, and will increase the reliability that may be associated with the teleaction teleservice. The maintenance flow is applicable for semipermanent and PLL access, at both the T and coincident S/T interfaces.

Support of the maintenance flow is mandatory for both network and subscriber equipment.

This maintenance flow is based on the use of UI frames with SAPI value 12 and is intended for logical connectivity checking, fault location and alarm reporting along the logical link path. Connectivity checking and fault location is provided through the loop procedure which enables the TMF to send LOOP REQUEST messages to different entities along the logical link path. The loop destination replies with a LOOP RESPONSE message.

In case of errors on the links tested by the loop, diagnostic information may be included in the LOOP RESPONSE message.

13.2 Procedures

13.2.1 General

The procedures described in this subclause may be initiated regardless of the state of the logical link (activated or deactivated).

If several physical paths exist between entities involved in the maintenance flow, each UI frame related to a given deactivated logical link, may be routed on a one by one basis (i.e. independently) on the available paths.

UI frames related to a given activated logical link shall be sent on the particular path of that logical link.

13.2.2 Loop procedure.

Figure 10 illustrates the principle of the loop procedure.

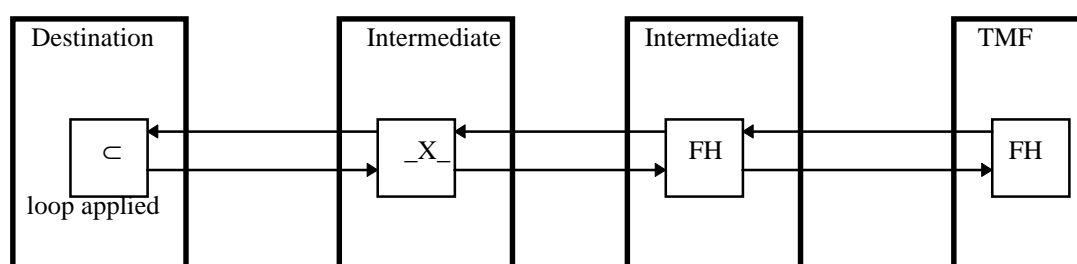


Figure 10: Loop procedure principle

The TMF, as the loop originator entity, sends a LOOP REQUEST message. This LOOP REQUEST message shall be relayed by intermediate entities to the loop destination entity (ISDN FHs, PTN, NT2 TA, TE1). The destination entity shall reply with a LOOP RESPONSE message which shall be in turn relayed up to the TMF.

The conditions used by a TMF to determine when it wants to initiate a loop procedure on a particular logical link are network and application dependent.

13.2.2.1 LOOP REQUEST message generation by the TMF

The LOOP REQUEST message is generated and sent by the TMF as follows:

- the Loop originator information element octet is set to TMF code point (see table 6);
- the Loop destination information element octet codes the identity of the entity that is requested to respond to the LOOP REQUEST message. The code point LAPD termination is used when the TMF wishes to initiate an end-to-end loop procedure but has no knowledge of the actual entity which terminates the logical link (e.g. TE1, TA) (see table 7);
- the Diagnostic information element octet is set to 0 by default, since it carries no meaningful information in the LOOP REQUEST message;
- a Test data information element may be included, whose content is determined by the TMF;
- the TMF shall use a timer (T-LOOP) to detect that LOOP RESPONSE messages have not been received.

13.2.2.2 LOOP REQUEST message relaying

Intermediate entities which are not identified in the Loop destination information element of received LOOP REQUEST messages shall relay the UI frames on the adjacent logical link path.

In case an intermediate entity knows that the relaying of the UI frames is not possible on the adjacent logical link path, the intermediate entity shall act as a loop destination entity and send a LOOP RESPONSE message to the TMF as described in subclause 14.2.2.4. In this case, the Diagnostic information element shall be used to report the impossibility of relaying the LOOP REQUEST message by inserting one of "Destination loop unreachable", "DLCI not registered" or network dependent code points.

If a TE1/TA/NT2/PTN that is the LAPD termination entity receives a LOOP REQUEST message with a Loop destination information element different from its own loop destination code point and from "LAPD termination", it should discard this LOOP REQUEST message.

13.2.2.3 LOOP REQUEST message reception by the requested loop destination

The entity identified in the Loop destination information element of the received LOOP REQUEST message shall reply by sending a LOOP RESPONSE message to the TMF as described in subclause 13.2.2.4.

If a TE1/TA/NT2/PTN that is the LAPD termination entity receives a LOOP REQUEST message with a Loop destination information element equal to "LAPD termination", it should also reply with a LOOP RESPONSE message.

The Diagnostic information element should normally be coded as "loop successful".

In situations where a LAPD termination entity, as the requested loop destination, is able to reply to the loop, but has information about faults further on, a network dependent diagnostic may be used to indicate such faults (e.g. a Terminal Adapter (TA) could report the state of the R interface).

13.2.2.4 LOOP RESPONSE message generation by the actual loop destination

The LOOP RESPONSE message shall be generated and sent by the actual loop destination as follows:

- the Loop originator information element octet is set to TMF code point (see table 6);
- the Loop destination information element octet codes the identity of the actual destination loop (see table 7);
- the Diagnostic information element octet is coded taking into account the fact that the actual loop destination is, or is not, the requested loop destination, or indicating other faults (see subclause 13.2.2.2 and subclause 13.2.2.3);
- if a Test data information element is received in the LOOP REQUEST message, then an identical Test data information element content shall be included in the LOOP RESPONSE message.

13.2.2.5 LOOP RESPONSE message relaying

All intermediate entities up to the TMF shall relay on the adjacent logical link path LOOP RESPONSE messages.

Where an intermediate entity knows such relaying is not possible, it shall discard these LOOP RESPONSE messages.

13.2.2.6 LOOP RESPONSE message reception by the TMF

The TMF shall check:

- the Loop destination information element;
- the Diagnostic information element;
- the Test data information element;

and shall stop the relevant time to T LOOP. It shall also determine which entity actually responded and, if this entity differs from the requested loop destination, shall ascertain the reason in order to detect possible logical connectivity problems or other faults on the logical link.

Subsequent actions undertaken by the TMF are network and application dependent.

13.2.2.7 Expiry of the loop timer

Expiry of the timer T-LOOP means that either the corresponding LOOP REQUEST or LOOP RESPONSE messages have been lost or discarded and consequently that the loop procedure has failed.

Actions undertaken by the TMF upon T-LOOP expiry are network and application dependent.

13.2.2.8 Loop timer value.

The value of the timer T-LOOP is network dependent.

13.2.3 Alarm reporting procedures

The alarm reporting procedure is defined to enable all parties involved in provision of the communication facilities (EUT, TMF, SPT) to become aware of situations which will result in the loss, or degradation of service. The procedures enable the source of the fault to be determined exactly in the case of an EUT fault. For network-internal faults, indications of the unavailability of network transmission paths are provided to EUT and/or SPT through the loop mechanism. Network-internal localization of fault origin is outside the scope of the present document. Faults which result in loss of communication facilities are outside the scope of the present document.

The definition of what constitutes an alarm is subjective and application dependent. Hence no attempt is made to specify different procedures for particular alarm situations. The network shall always treat the unavailability of a transmission path as an alarm. The notification to involved parties, however, of the occurrence of an alarm, shall meet the requirements for the Fault Report Delay Classes defined in EN 50136-1-1 [5].

13.2.3.1 Detection of an alarm at the EUT

On detection that an alarm generating event has occurred, the EUT shall send a REPORT message to the TMF containing:

- a Report type information element indicating "Alarm event";
- a Diagnostic information element indicating the cause of the alarm;
- optionally, terminal related data which may assist the SP to resolve the fault.

On receipt of the REPORT message, the TMF may either store the message for later transfer to the SPT, or immediately transfer the message to the SPT. Where the EUT is subscribed to an SPT that the TMF knows is accessing the service via the D channel, the TMF shall insert into the REPORT message a DLCI information element containing the DLCI of the EUT, before sending it to the SPT.

Other actions which the TMF may take to ensure that future communication with a faulty EUT is suspended, pending resolution of the fault, are outside the scope of the present document.

13.2.3.2 Detection of an alarm situation at the SPT

On detection that an alarm generating event has occurred, the SPT shall send a REPORT message to the TMF containing:

- a Report type information element indicating "Alarm event";
- a Diagnostic information element indicating the cause of the alarm;
- optionally, terminal related data which may provide additional information to EUTs on the characteristics of the fault.

The TMF shall send the received REPORT message to all EUTs subscribed to the teleaction teleservice provided by the SPT. The TMF shall ensure that transmission of the REPORT message to all EUTs meets the Fault Report Delay Class limits as specified in EN 301 131 [14].

13.2.3.3 Detection of an alarm situation at the TMF

If an alarm event occurs in the TMF, the TMF shall broadcast to all connected EUTs and SPTs a REPORT message with a Diagnostic information element coded as "Transmission path unavailable due to network element failure". The TMF shall ensure that transmission of the REPORT message to all EUTs/SPTs meets the Fault Report Delay Class limits as specified in EN 301 131 [14]. On receipt of the REPORT message all EUTs and SPTs shall suspend attempts to establish communication paths through the network.

NOTE: It is possible that the Terminal data information element could be used to provide additional information to EUTs and SPTs about the fault in the TMF.

Local actions to request human intervention are outside the scope of the present document.

13.2.4 Alarm clearance

An alarm shall be indicated as being cleared by an EUT or SPT by sending a REPORT message to the TMF. If the REPORT message is sent by an EUT it shall include the Report type information element coded to indicate "Alarm clear" and may include a Diagnostic information element, and/or Terminal data information element. The TMF shall pass without modification the REPORT message received from the EUT to the SPT at the earliest possible opportunity. Where the EUT is subscribed to an SPT that the TMF knows is accessing the service via the D channel, the TMF shall insert into the REPORT message a DLCI information element containing the DLCI of the EUT, before sending it to the SPT.

If the REPORT message is sent by a SPT, it shall include a Report type information element coded to indicate "Alarm clear", and may include a Diagnostic information element, and/or Terminal data information element. The TMF shall pass without modification the REPORT message received from the SPT to all EUTs subscribed to that SPT, at the earliest possible opportunity.

An alarm shall be indicated as being cleared by the TMF by sending a REPORT message with the Report type information element coded to indicate "Alarm clear" to all connected EUTs and SPTs.

The TMF shall ensure that transmission of the REPORT message to all EUTs/SPTs meets the Fault Report Delay Class limits as specified in EN 301 131 [14].

13.3 Broadcast procedures

Support of the broadcast procedure is optional for the TMF. The broadcast procedure enables the SPT to notify the TMF by means of a single message that the information contained in that message be sent to all the EUTs subscribed to the teleaction application service operated by the SPT.

The SPT may indicate to the TMF that a message is to be broadcast by sending a REPORT message to the TMF containing a Report type information element coded as "Broadcast request".

The TMF on receiving this message, shall:

- perform a lookup to determine all EUTs subscribed to the teleaction application offered by the SPT;
- transfer the REPORT message to all such EUTs.

On completion of the broadcast, the TMF shall indicate to the SPT that the broadcast is complete by sending a REPORT message to the SPT containing a Report type information element coded as "broadcast confirm".

If the TMF receives a broadcast request, and does not support this functionality, then it shall discard the received message and send to the SPT a REPORT message containing a Report type information element coded as "broadcast denied - functionality not implemented".

13.4 Forward compatibility procedures.

For forward compatibility reasons, and because of national specific messages that may be defined, ISDN Frame Handlers and also subscriber frame handlers (e.g. contained in NT2 or PTN) should relay maintenance frames, as described in subclause 7.1, containing messages not described in the present document.

For the same reasons, LAPD termination entities which are not able to process the content of received maintenance frames should discard them.

14 Parameter values

The parameter values specified in ETS 300 402-1 [10] table 10 shall apply to any users accessing the service via the D channel. For users accessing the service via a permanent or semipermanent B channel over which Bd channel procedures operate, then the parameter values specified in ETS 300 099 [12] apply.

15 Dynamic description

Not required.

Annex A (informative): Signalling flows

The diagrams contained in this annex are meant to be illustrative and to complement the text in the main body of the present document. They do not address every possible scenario. The diagrams indicate an advancing time from top to bottom without any fixed scale. The following conventions are used:

s SAPI value
tei TEI value
dlci DLCI value

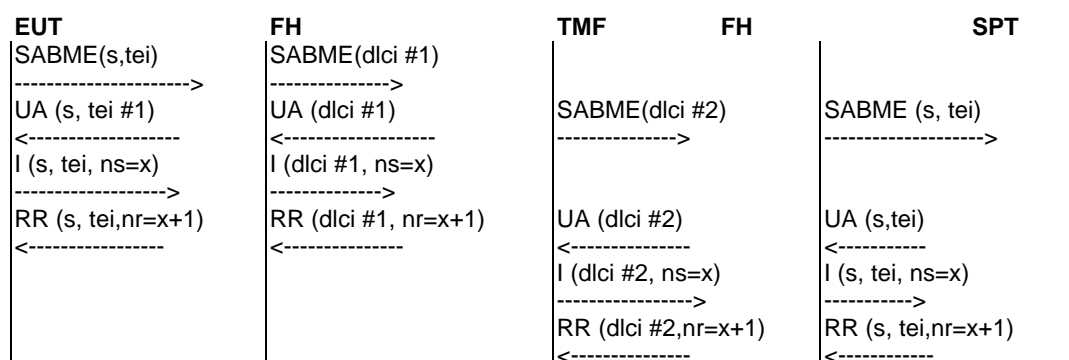


Figure A.1: Datalink establishment by EUT; SPT connected via D channel; no previous phase 1 path to SPT established

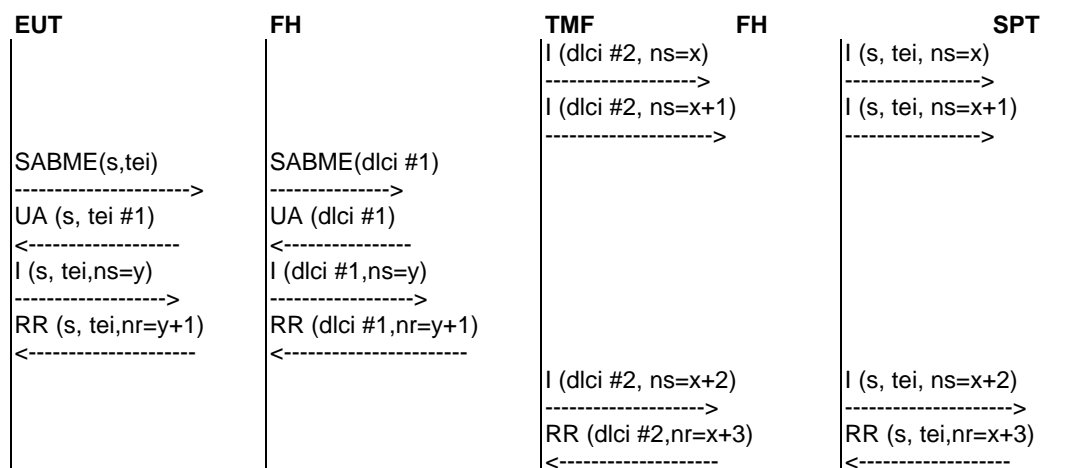


Figure A.2: Datalink establishment by EUT; SPT connected via D channel; previous phase 1 path to SPT established

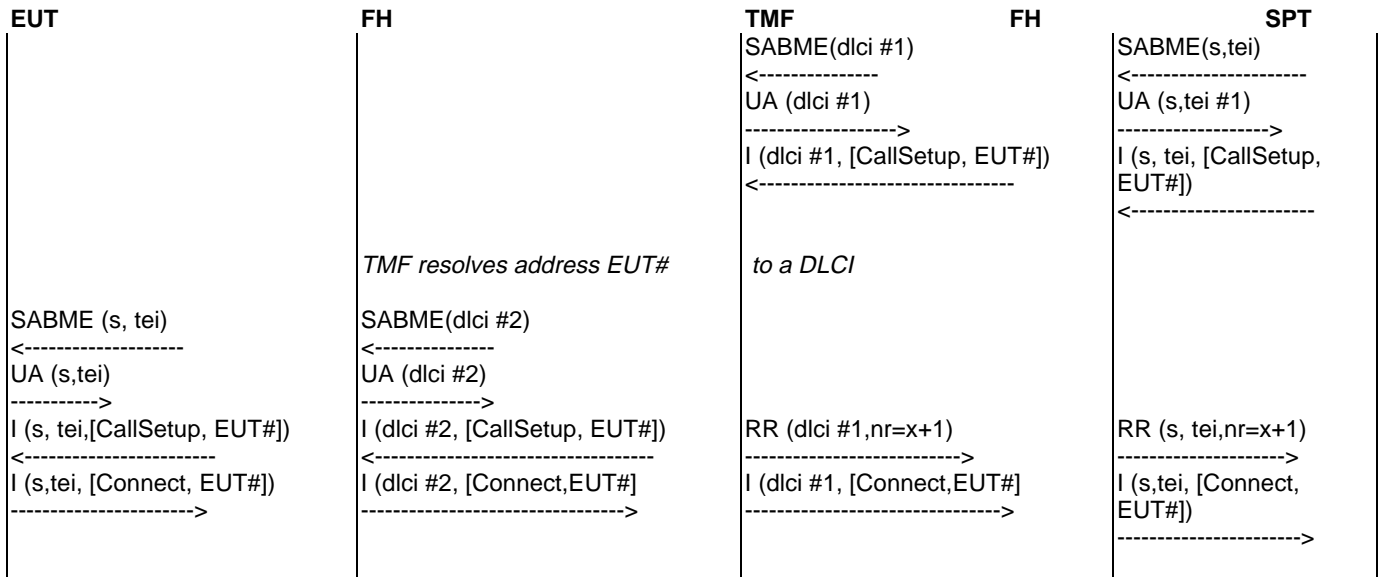


Figure A.3: Datalink establishment by SPT; SPT connected via D channel; no previous phase 1 path to TMF established; TMF implements network-layer protocol

NOTE: The network layer protocol messages CallSetup, Connect are meant to be illustrative only and are not intended to reflect any particular layer 3 protocol.

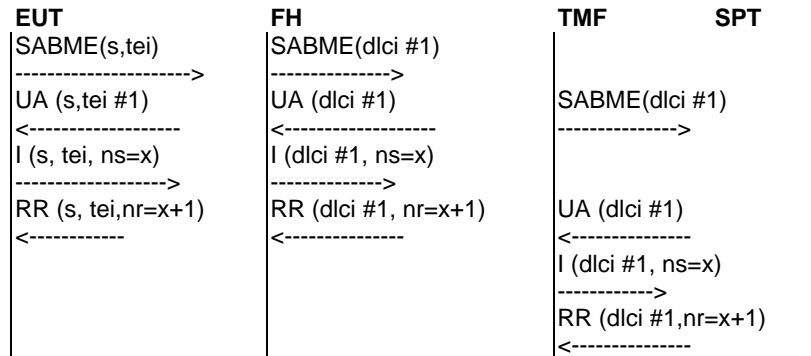


Figure A.4: Datalink establishment by EUT; SPT connected via Bd channel; no previous phase 1 path to SPT established; TMF performs frame switching

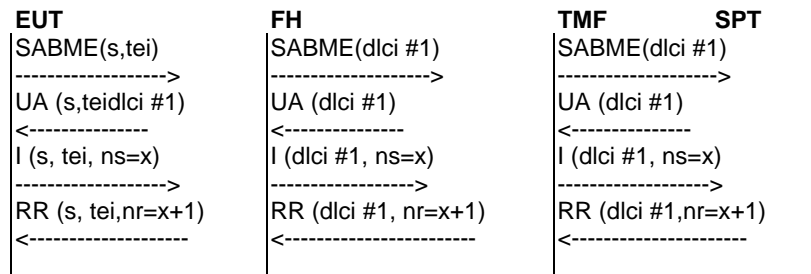


Figure A.5: Datalink establishment by EUT; SPT connected via Bd channel; no previous phase 1 path to SPT established; TMF performs frame relaying

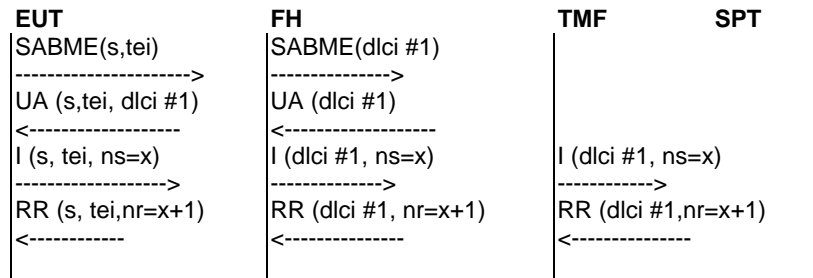


Figure A.6: Datalink establishment by EUT; SPT connected via Bd channel; previous phase 1 path to SPT established; TMF performs frame relaying

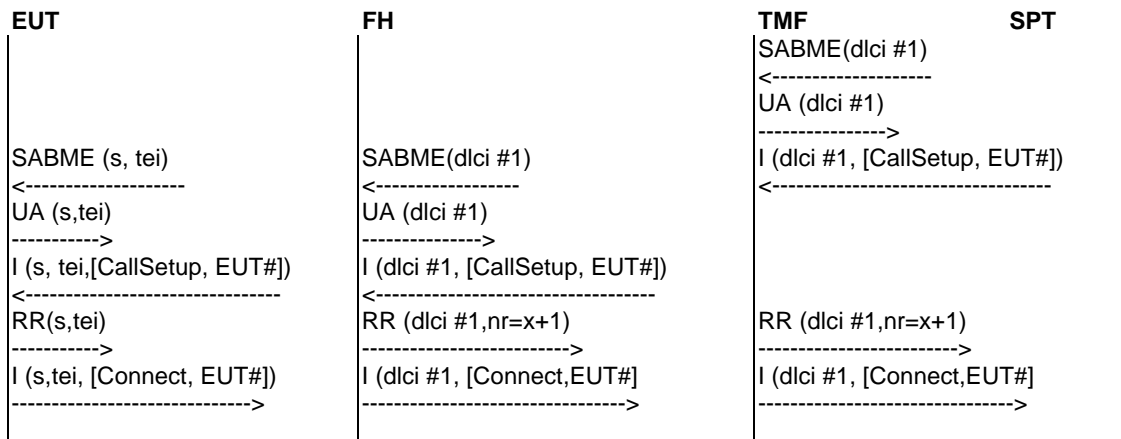


Figure A.7: Datalink establishment by SPT; SPT connected via Bd channel; no previous phase 1 path to TMF established; TMF implements network-layer protocol

NOTE: The network layer protocol messages CallSetup, Connect are meant to be illustrative only and are not intended to reflect any particular layer 3 protocol.

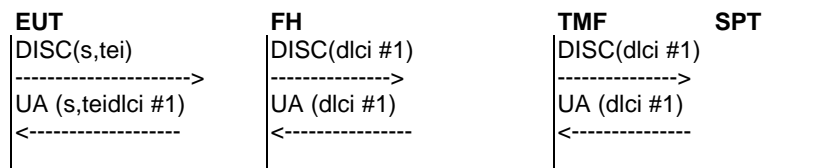


Figure A.8: Datalink disconnection by EUT; SPT connected via Bd channel; TMF performs frame relaying

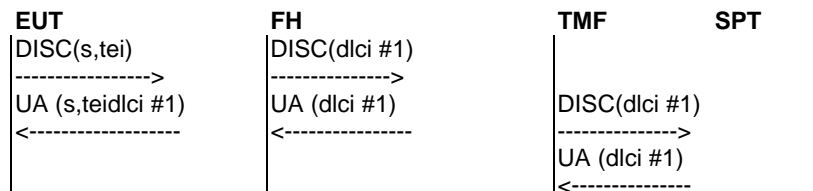


Figure A.9: Datalink disconnection by EUT; SPT connected via Bd channel; TMF performs frame switching

Annex B (informative): Functional capabilities and information flows for an FRF

B.1 Introduction and scope

This annex is provided for information and guidance purposes to assist the reader in understanding the essential network functionality i.e. frame routing, needed to implement the teleaction teleservice described in the main text. It identifies the functional capabilities and information flows required by an FRF to support the teleaction teleservice. In addition, possible locations in the network where such a function may reside are identified. Where the possibility exists to integrate the FRF with other functions used to realize the teleaction teleservice e.g. TMF, or to realize the ISDN D channel PMBS, then these are noted at appropriate places in the text.

B.2 Description

The FRF does not by itself support any service, but acts as an agent to realize a routing capability, which may be used by other services e.g. teleaction, PMBS. The FRF may be centrally located in a network, or may be distributed within each local, public or private, exchange. When centralized, the FRF may be used to concentrate traffic from multiple network sources towards a lesser number of destinations (either other network entities or service providers).

The FRF holds information which is statically provisioned at subscription time, and which generates a one-to-one association between a subscriber DLCI and a communication path to a service provider.

The FRF may support multiple paths to an SPT for reliability and diversity reasons. In this case, load sharing over the paths may operate. The existence and operation of such load sharing mechanisms is outside the scope of the present document.

The FRF may implement a frame relaying or frame switching technique. The difference between these techniques is described in ITU-T Recommendation I.233 [15].

Additional functions such as traffic policing, accounting, etc. are outside the scope of the present document.

B.3 Derivation of the functional model

The full functional model for the teleaction teleservice would be an end-to-end representation of all the functions involved in a teleaction "call". The functional model in figure B.1 is a basis for representing the functional entities and information flows for the FRF. It does include the access portion of the full model i.e. the portion from the user's Teleaction Call Control Agent (CCAT) to the call control agent in the serving local, public or private, exchange. However, as this access portion is identical in functionality to that for the PMBS service, it is not described further. The information flows between FE1 and FE2 and between FE4 and FE2 are implemented over 64 Kbits channels established on a permanent basis. The information flows between FE2 and FE3 are implemented over channels established on either a permanent or demand basis.

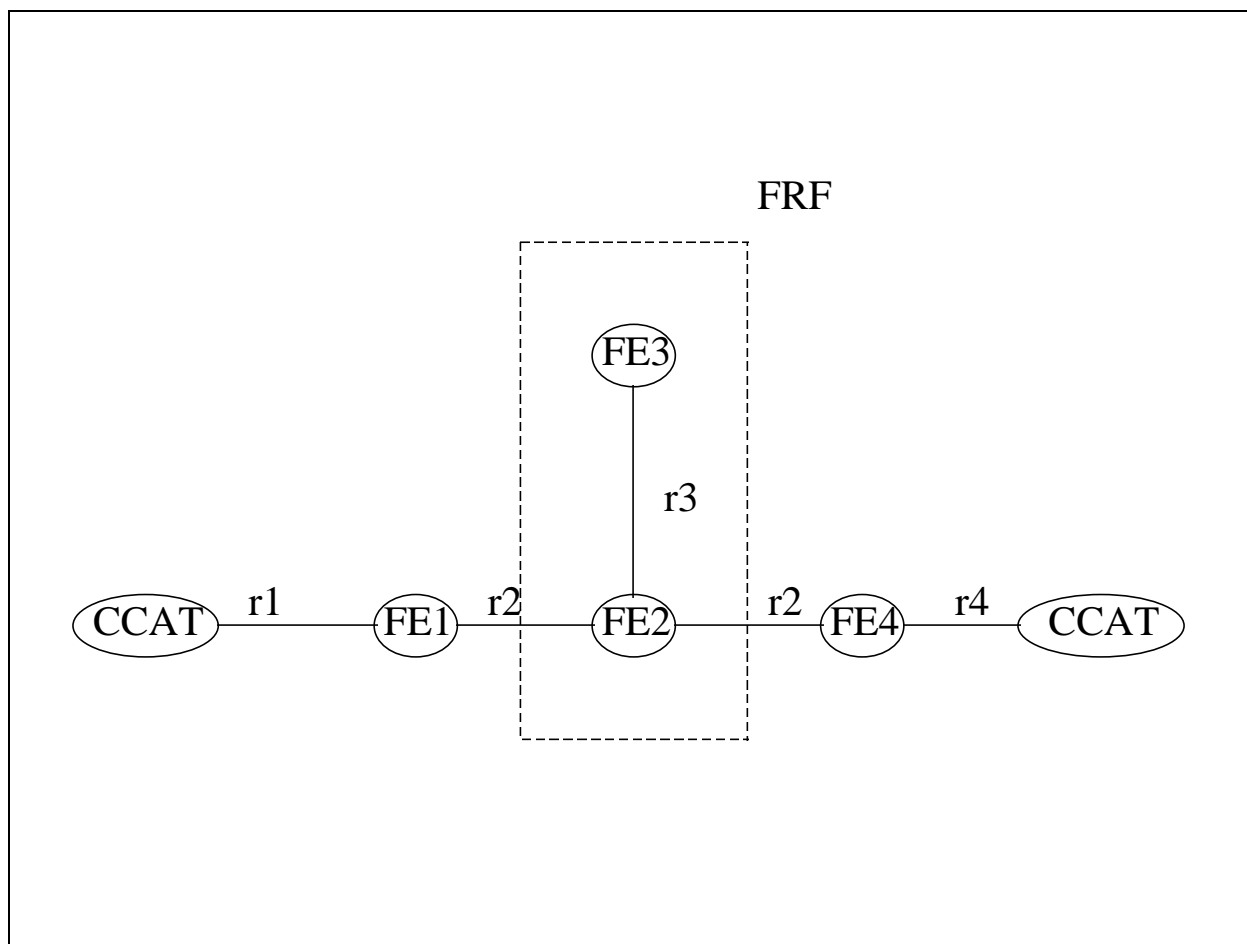


Figure B.1: Functional model for FRF

The FRF corresponds to the combination of FE2 and FE3.

Where a SPT is directly connected to an FRF, then the CCAT and FE4 entities reside within the one physical entity.

B.3.1 Description of the functional entities

B.3.1.1 Description of the Connection Related Functional entity (CRF)

FE1 and FE4 represent the originating and terminating CRFs, which:

- establish, maintain and release packet mode bearer connections, upon request (from the EU or from the SP);
- associate and relate the CCAT entities involved in a particular call and/or service;
- manage the relationship between the CCAT entities involved in a teleaction call;

The CRF incorporates the Frame Handler (FH) function described in ETS 300 099 [12].

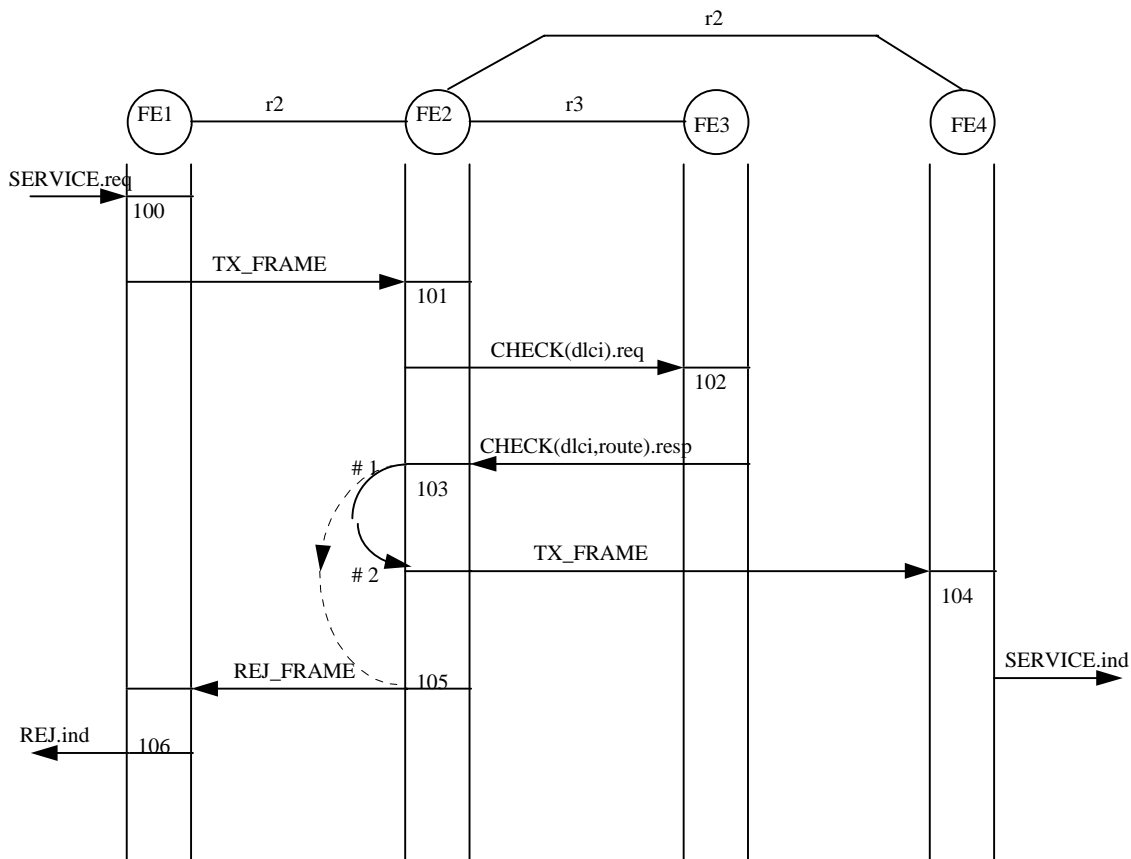
B.3.1.2 Description of the Basic Routing Functional (BRF) entity

FE2 represents the BRF which enables the routing of frames between CRFs (and/or between CRF and PH). The routing is performed on the basis of a label (DLCI) contained in each frame received. The DLCI is referred to a DF which provides an appropriate route reference number to enable final routing. The BRF does not maintain the association between the DLCI and a route. The BRF maintains a table whose entries consist of references to the physical connections existing in the physical implementation of the BRF.

B.3.1.3 Description of the Database Functional (DF) entity

FE3 represents the DF whose function is to maintain the relationship between a received DLCI in an incoming frame, and a reference to the corresponding entry in the BRF table, representing the physical connection to the CRF of the destination user.

B.4 Information flows



NOTE: #1 and #2 represent options whose selection is dependent on the contents of the CHECKS.resp.flow.

Figure B.2: Information flows

NOTE 1: As the FRF performs the same function i.e. frame routing, irrespective of the state of the associated "call" (establishment, data transfer or release) between users of the teleaction teleservice, only a single flow is necessary to illustrate its function.

NOTE 2: The information flow is based at the data-link layer level. Network layer protocols are not shown as these are network, and application, dependent. It is possible for CCITT Recommendation X.25 [6] to be used as the network layer protocol, and for the FRF to be used as an intermediate network entity in the realization of the PMBS service. In this case, one of the physical routes from the FRF terminates on a PH, and the necessary information flows are contained in ITU T Recommendation Q.72.

NOTE 3: The information flow is symmetrical between EU and SP when layer 2 based routing is used in the network.

B.4.1 Contents of TX_FRAME

Standard LAPD-E frame format, with DLCI corresponding to the service requesting user in the Address field.

B.4.2 Contents of CHECK.req

DLCI of received frame.

B.4.3 Contents of CHECK.resp

DLCI of corresponding CHECK.req.

Routing table entry reference number.

B.4.4 Contents of REJ_FRAME

Standard LAPD-E frame format, with DLCI corresponding to the service requesting user in the Address field.

B.5 Functional entity actions

Functional entity - FE1

Reference number: 100

Process service request

- receive request from user for service
- construct DLCI and add to frame
- select Bd channel
- send frame to FRF

Functional entity - FE2

Reference number: 101

Database lookup initiate

- receive frame from FE1
- buffer received frame
- copy DLCI from received frame
- issue database query request containing received DLCI value

Functional entity - FE3

Reference number: 102

Database response initiate

- receive lookup query from FE2
- search database using received DLCI
- determine outgoing route (Bd channel) reference number
- return DLCI and route reference number

Functional entity - FE2

Reference number: 103

Database response received

- receive database query response from FE3
- using route reference number contained in the response, transmit the frame currently held in the buffer, with the DLCI contained in the response, on the route identified by the route reference number
- clear the buffer entry

NOTE: Where the SP is directly connected to the FRF then the DLCI returned in the lookup will be the same as that contained in the lookup request. When the SP is connected by D channel, then the DLCI returned, is the DLCI of the SPT.

Reference number: 105

Database response received

- receive database query response from FE3
- on detecting a null route reference number in the response, transmit a frame rejection using the DLCI currently held in the buffer, on the route over which the frame containing that DLCI was received
- clear the buffer entry

NOTE: This action should only occur at datalink establishment.

Functional entity - FE4

Reference number: 104

Receive service request

- receive frame from FE2
- map DLCI to a local SAPI and TEI
- pass frame to user

NOTE: Where FE4 is permanently connected to FE2 i.e. direct connection of an SP to the FRF, then it is not necessary for the reverse translation of DLCI to SAPI/TEI to be performed, as this has no relevance in this instance.

Functional entity FE1

Reference number: 106

Service rejection received

- receive reject frame from FE2
- map DLCI to a local SAPI and TEI
- pass reject frame to user

B.6 SDL diagrams

Not required.

B.7 Network physical location scenarios

The following allocation of functional entities to physical network location is possible.

NOTE: As the service is symmetrical when layer 2 based routing is being used within the network, FE4 and FE1 are interchangeable. The table identifies the case where it has been assumed that the EU is connected to FE1 and the SP to FE4.

Table B.1: Functional entity possible locations

Scenario	FE1	FE2	FE3	FE4
Centralized FRF	LE/NT2	TR	TR	LE/SP
Integrated FRF	LE/NT2	LE	LE	LE/SP
Private FRF	LE/NT2	NT2	NT2	LE/SP
IN-based database function	LE/NT2	TR (SSP)	IN (SDP)	LE/SP
Legend: LE: Local exchange. TR: Transit exchange. SP: Service Provider. NT2: Network Termination type 2 e.g. a private network. IN: Intelligent network. NOTE: Due to the simplicity of the database lookup between FE2 and FE3, co-location of these FEs leads to simpler implementations. The IN based solution is included in the table only for completeness.				

History

Document history		
V1.1.1	February 1998	Public Enquiry PE 9824: 1998-02-13 to 1998-06-12